

Cory Krajewski

Portfolio 1

2102

Background Info:

- Farmhouse design because of surrounding areas of farmland placed in Greenville, and because we are using a flue-cured tobacco house which dealt with farmers and tobacco plants
- Seven-block area in Greenville's warehouse district, covers 22.3 acres
- Targeting Generation Z, and Millennials
- Few blocks from ECU
- Used to benefit ECU
- Comfortable and neutral space for businesses And students/millennials
- Displays are placed throughout the building for businesses to show off their items
- Catwalk connecting both the first and fourth Tobacco barn to make both upper rooms more accessible



Cory Krajewski

IDSN 2102 F20

User Profile:

Who will be using this space?

- College Graduates
- College Students
- Future Interns
- Workers
- Educators
- Businessmen

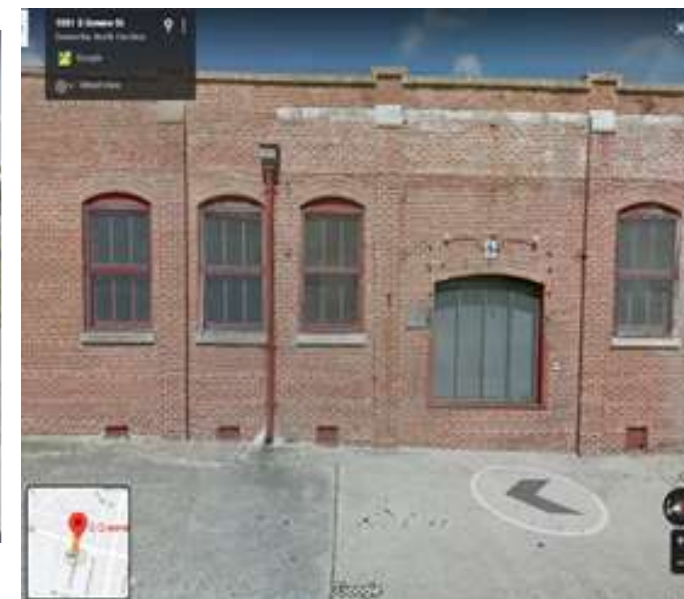
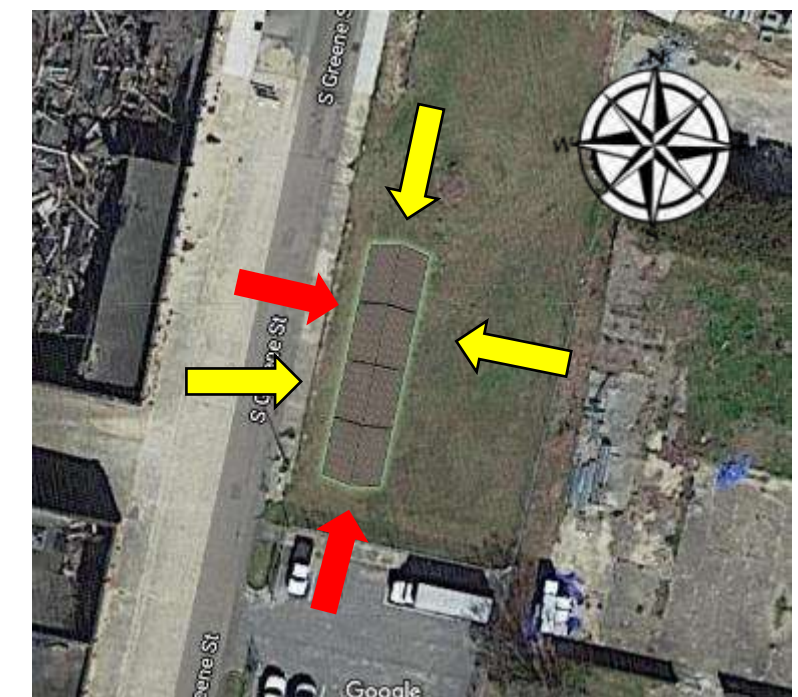


Cory Krajewski

IDSN 2102 F20

Site Profile/Site Analysis:

- This will be placed nearby the college campus of East Carolina
- This will be based on the neighborhood and the plan for the Millennial Campus.
- Located in Greenville, NC, at the intersection of W 10th St. and S Greene St
- Red arrows show entrances and Exits
- Yellow arrows show where the Sunlight will hit:
 - Sunlight will hit the right side In the morning
 - Sunlight will hit the top of the building Mid-day
 - Sunlight will hit the left side of the building in the afternoon/late afternoon



Cory Krajewski

IDSN 2102 F20

Design Problem Statement:

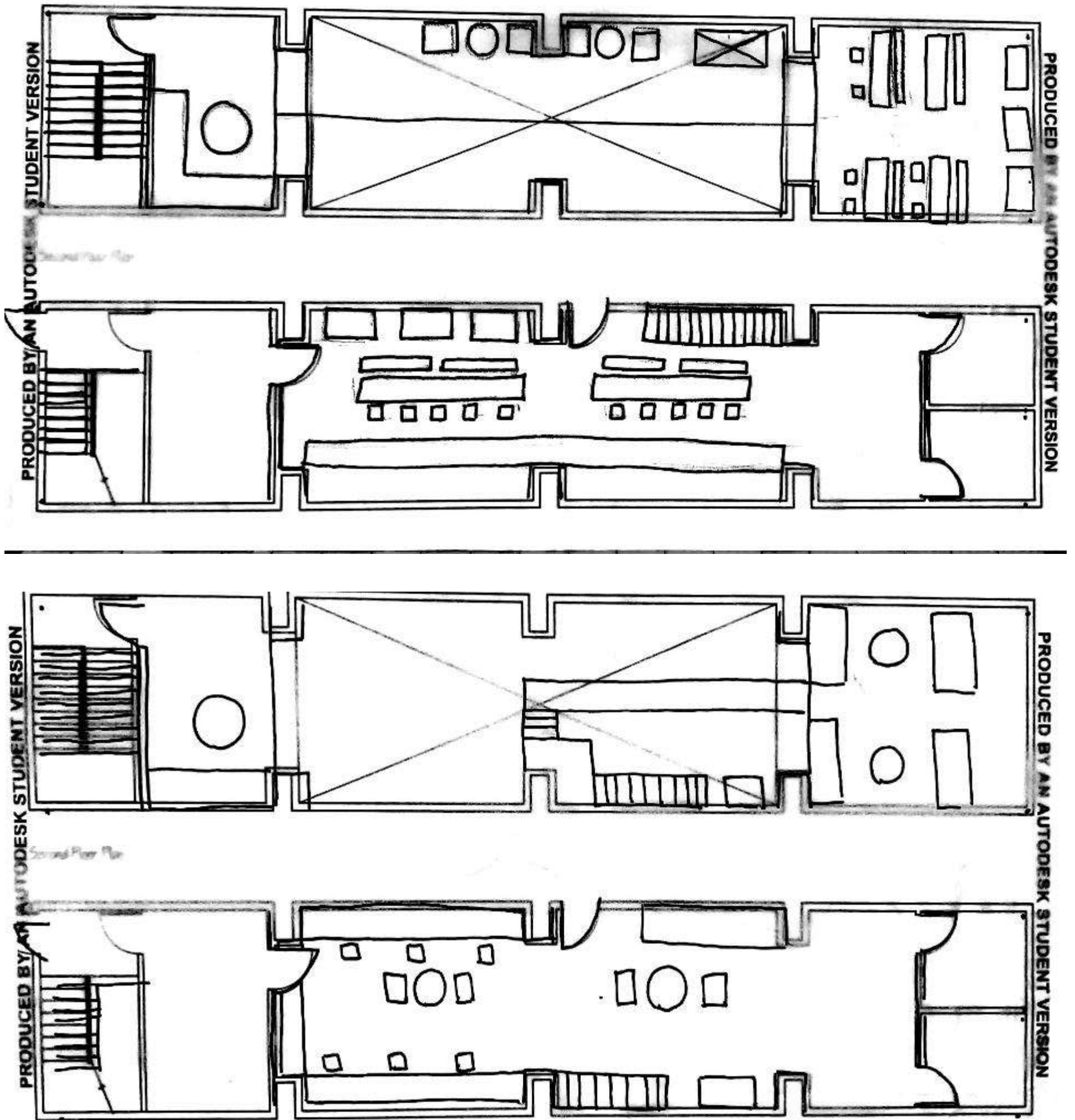
- Daylighting
 - Windows are higher up
 - Not as many windows
 - Sunlight will not be as prevalent under the catwalk during day/evening light
- Site:
 - By railroad tracks-lots of noise
 - Surrounding buildings are empty
 - Not many other businesses are surrounding the site
 - Identifying landmarks
- Wayfinding
 - Stairs are placed right next to entrance
 - Small nooks
 - Tables and Seats on first floor are in center of room
 - Moving around the space



Cory Krajewski

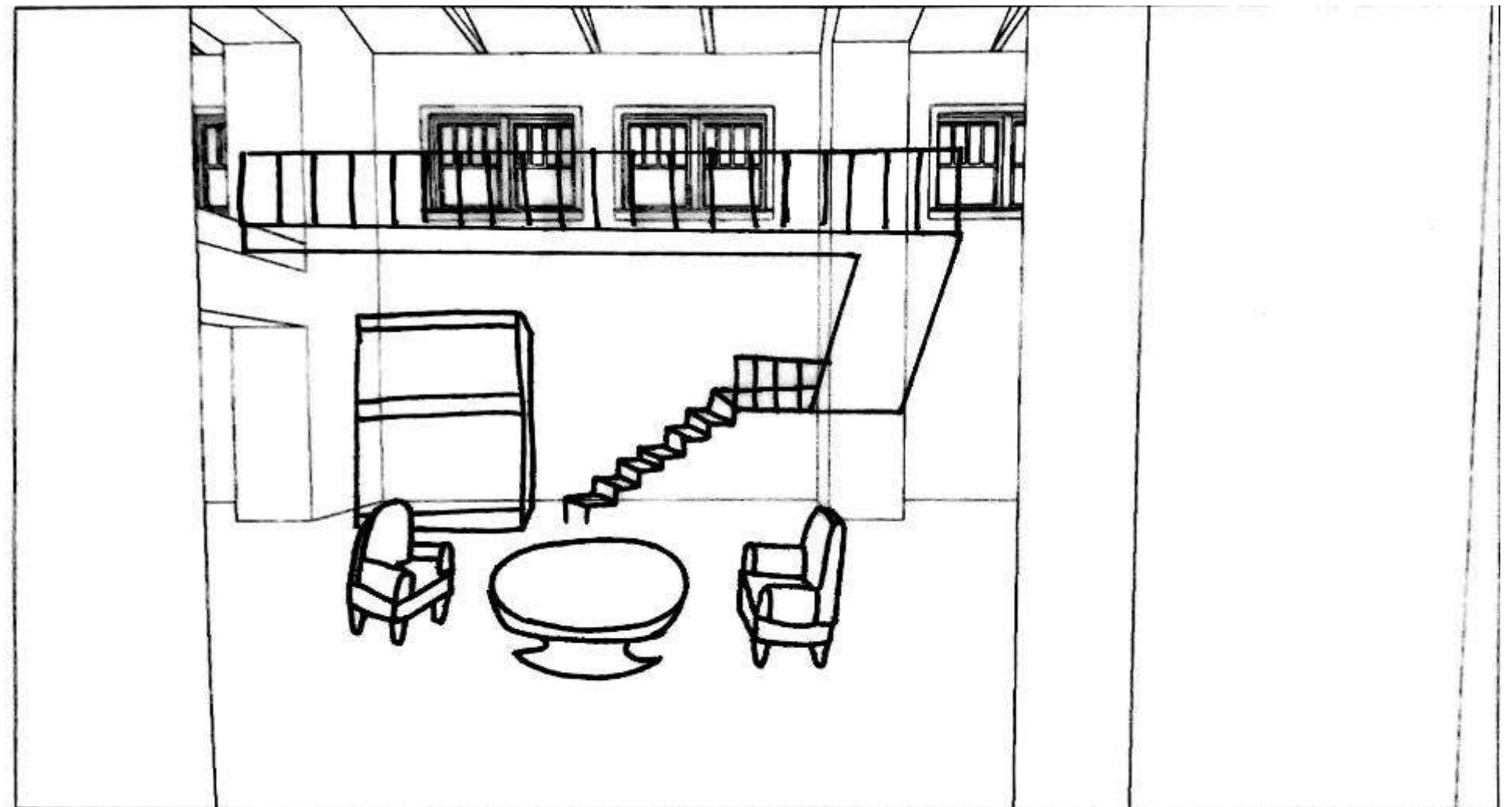
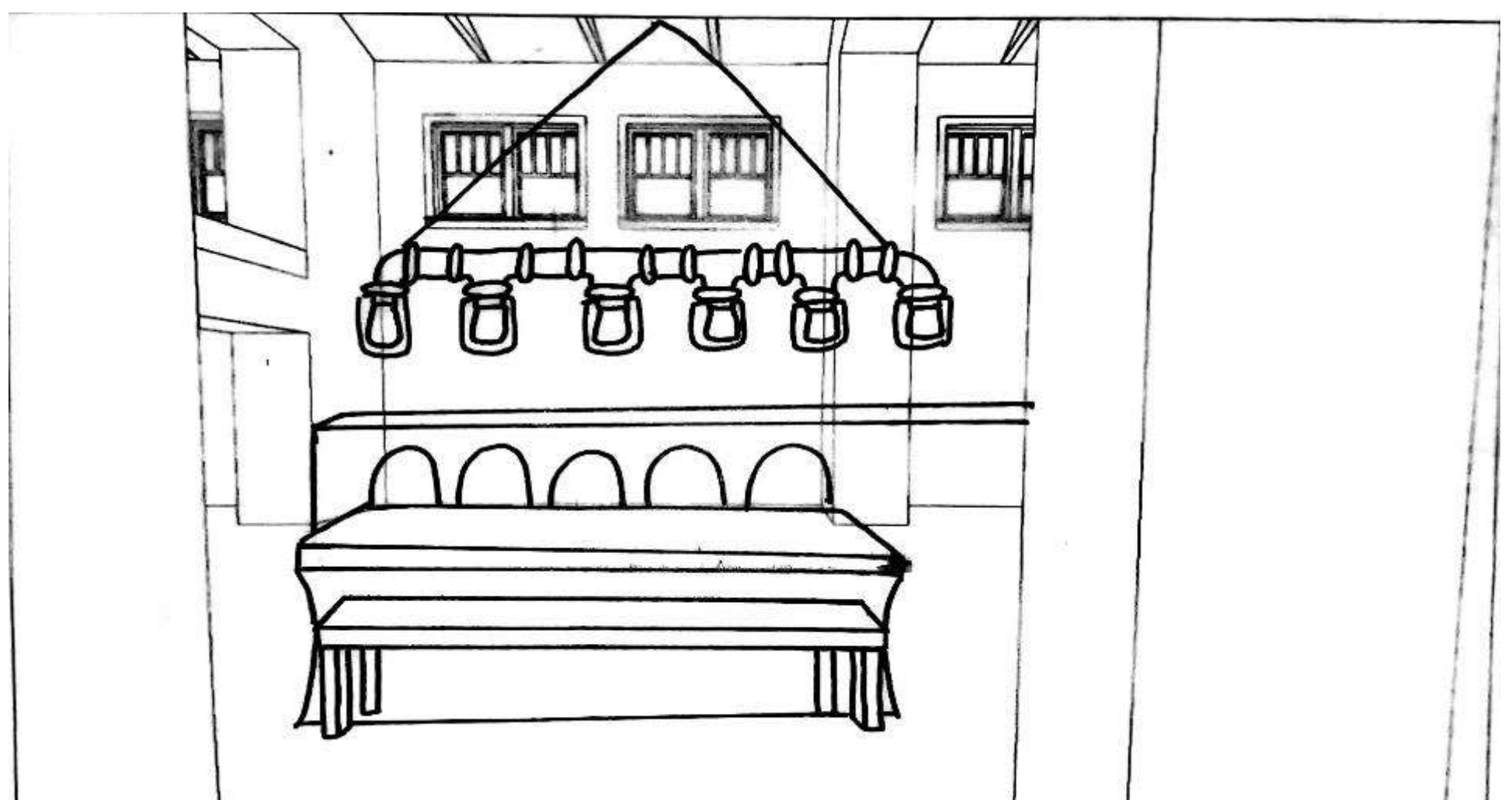
IDSN 2102 F20

Cory Krajewski
IDSN 2102 F20



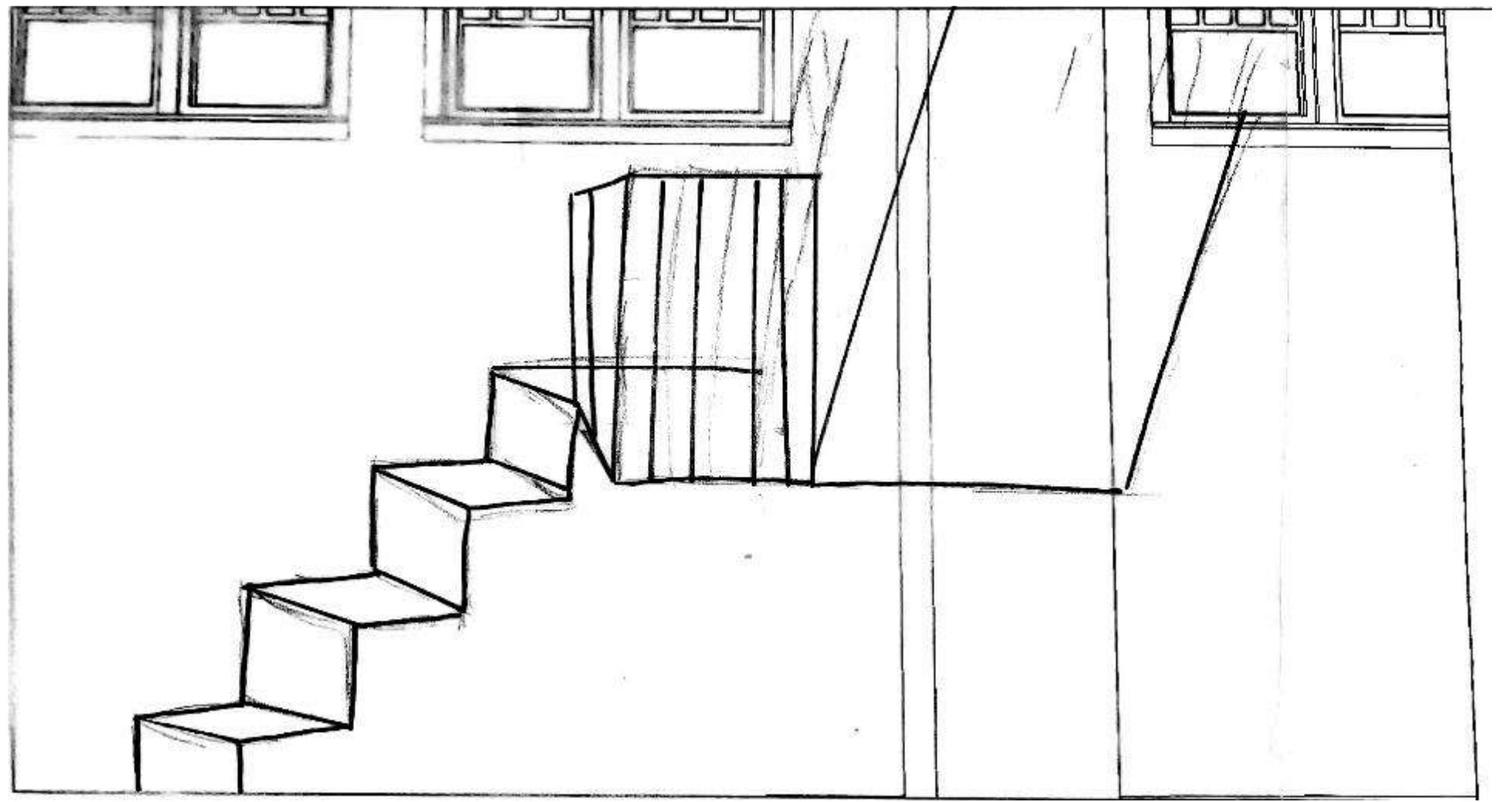
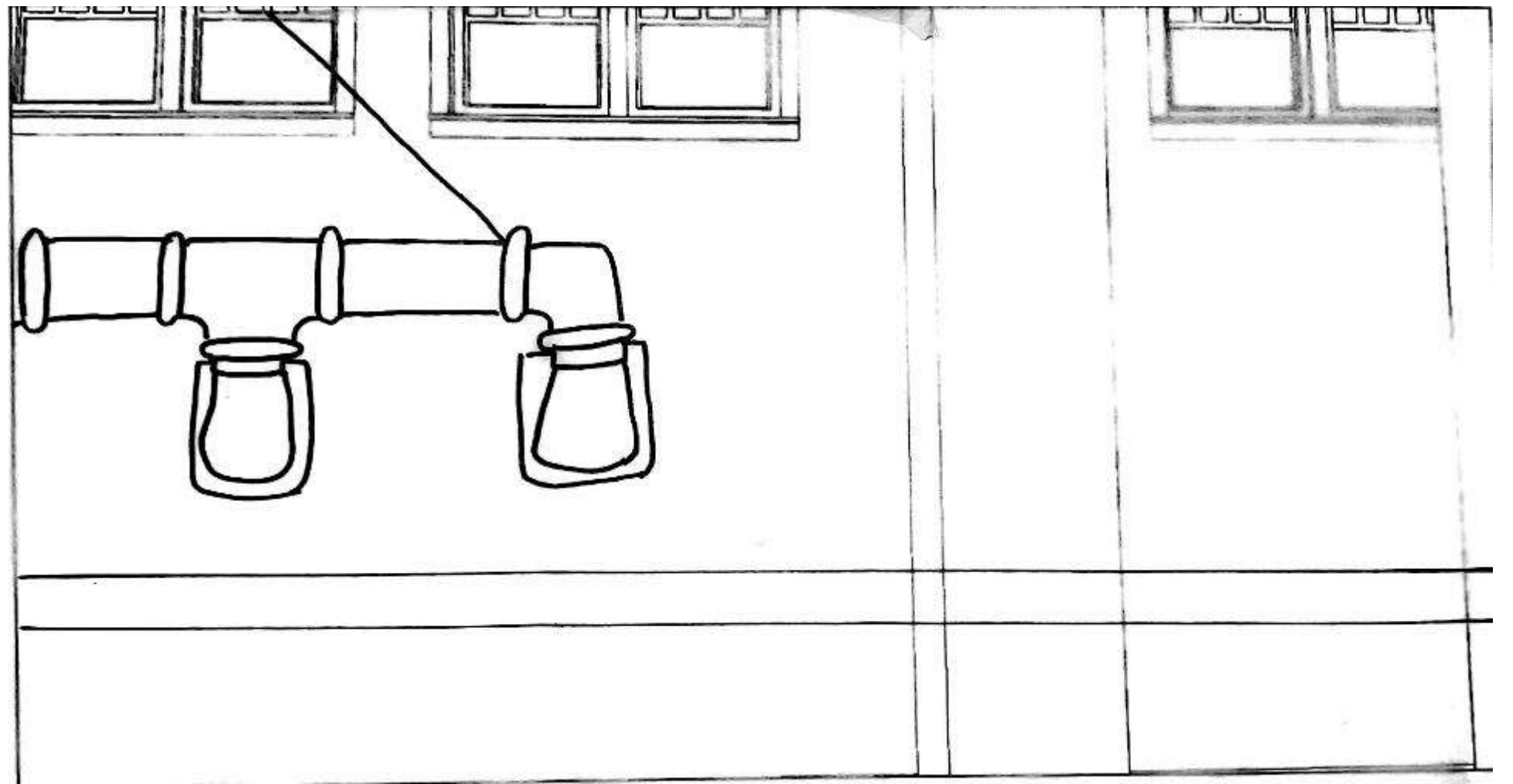
Cory Krajewski

IDSN 2102 F20



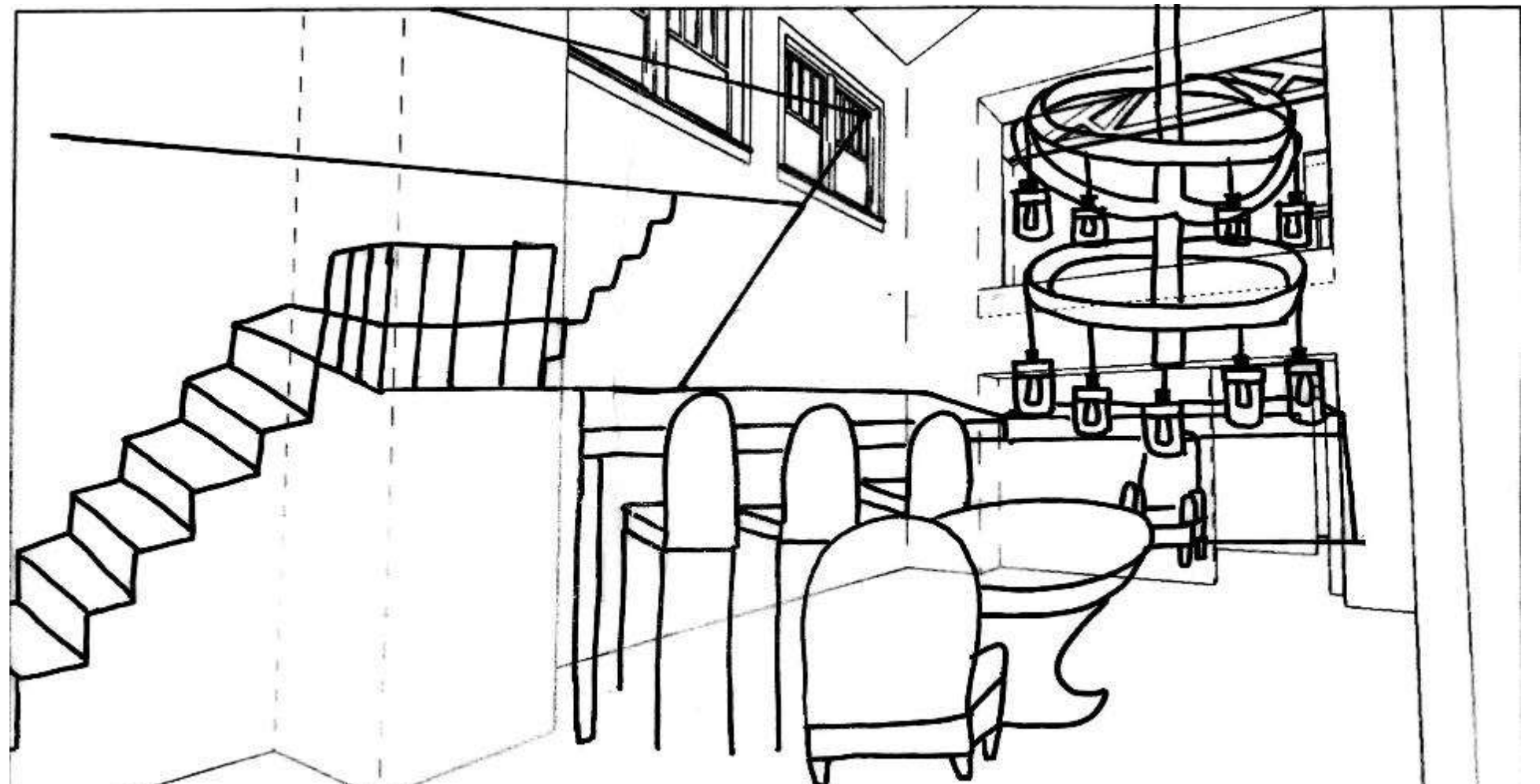
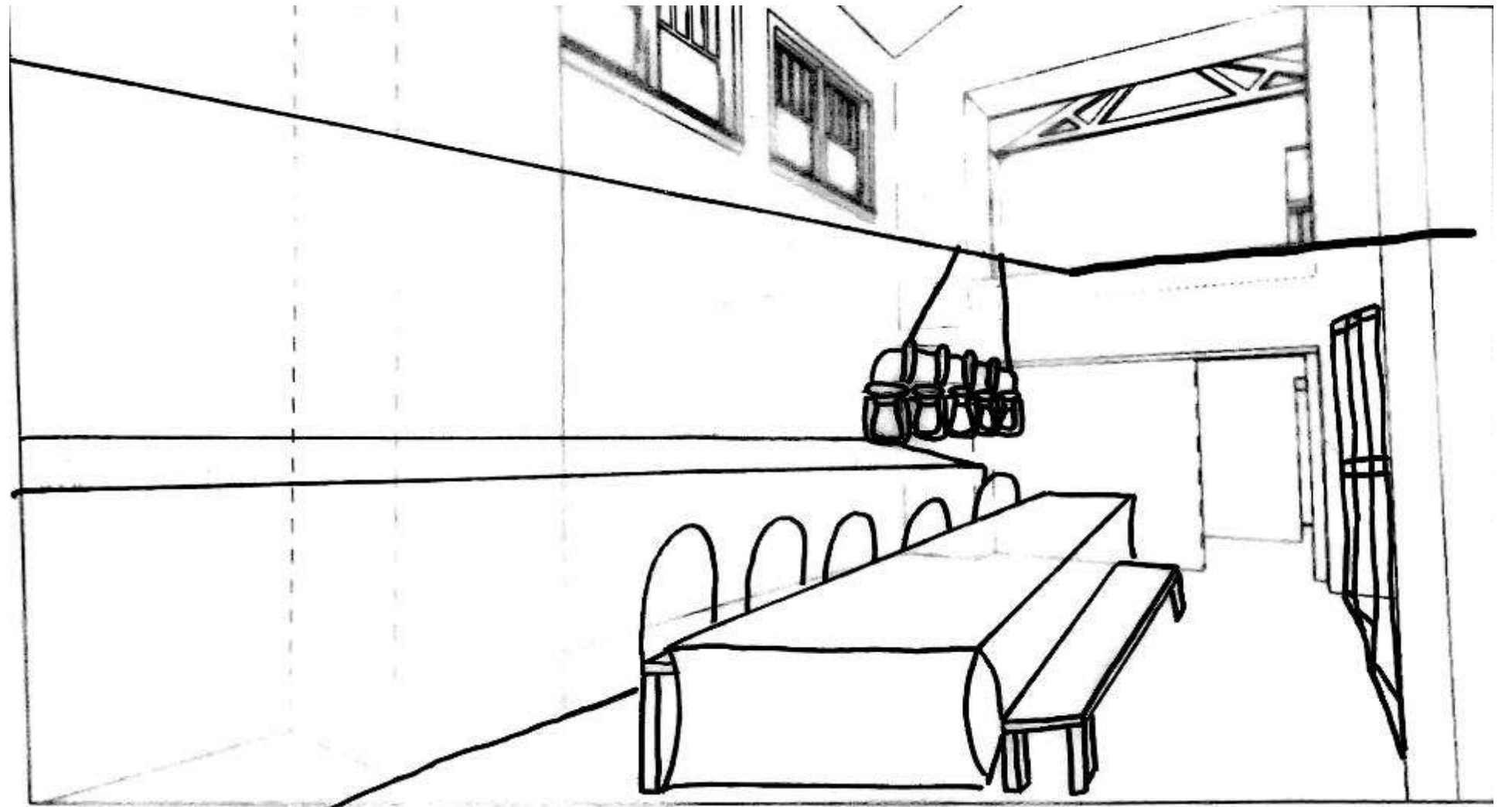
Cory Krajewski

IDSN 2102 F20



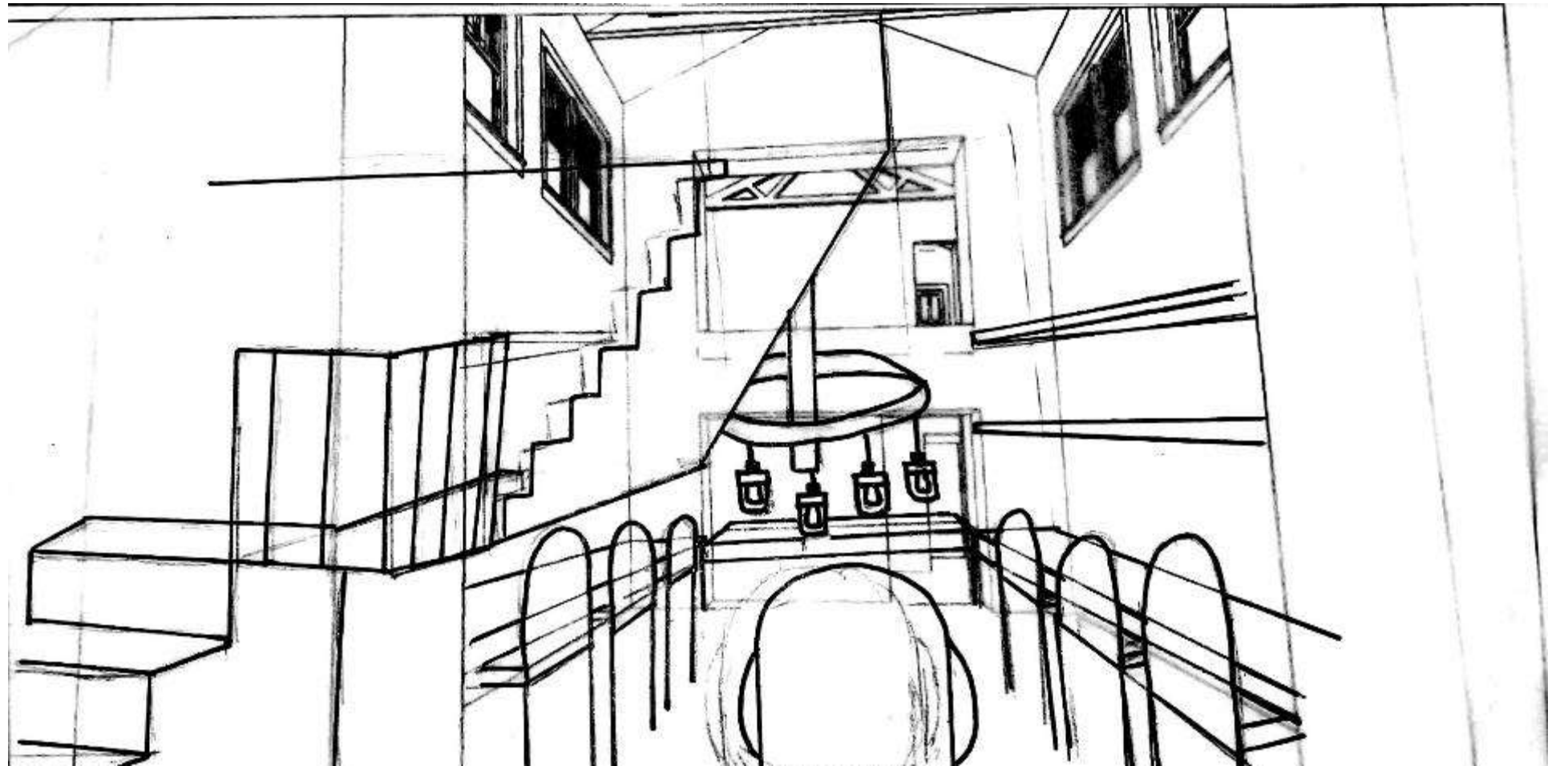
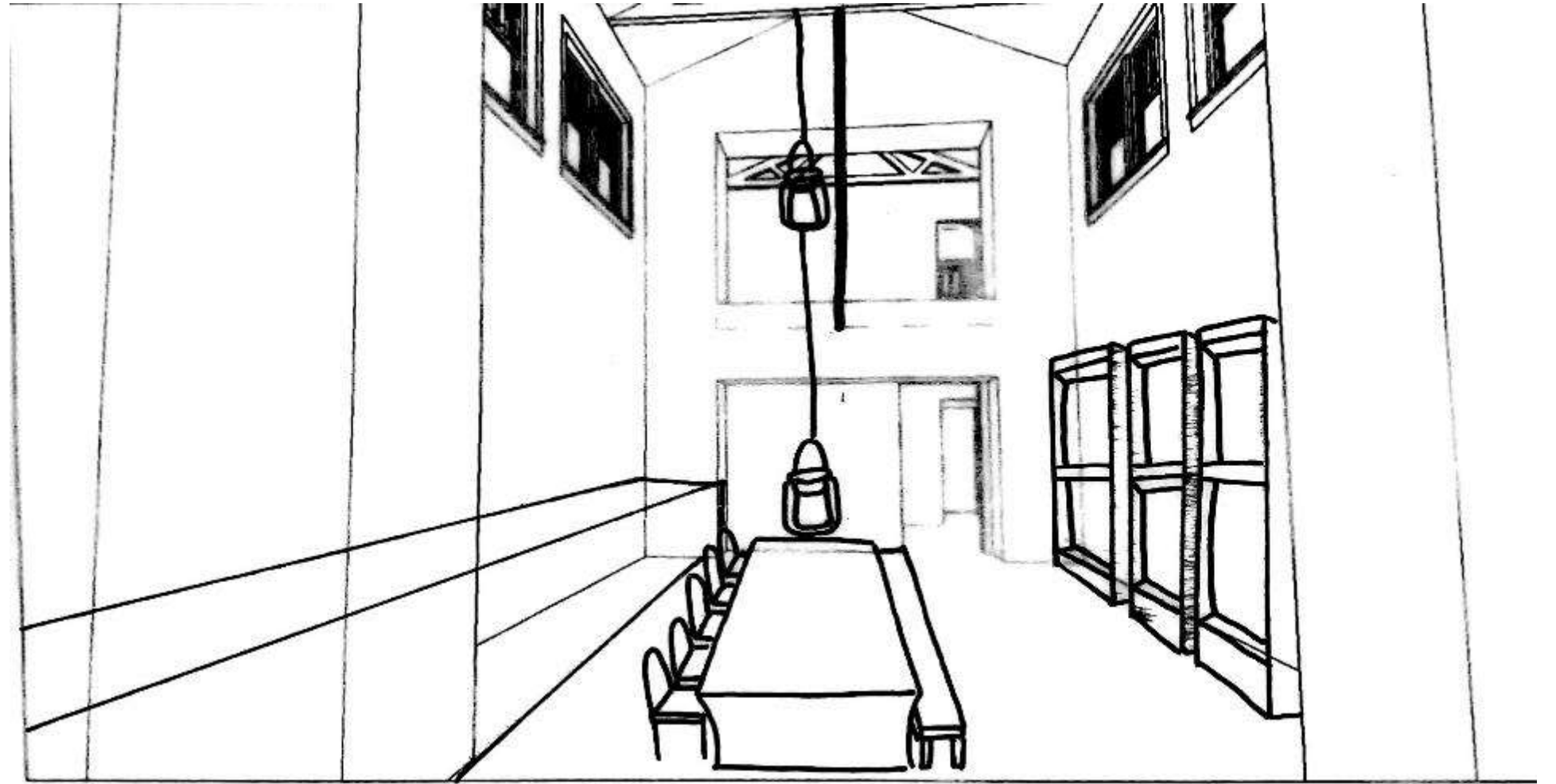
Cory Krajewski

IDSN 2102 F20

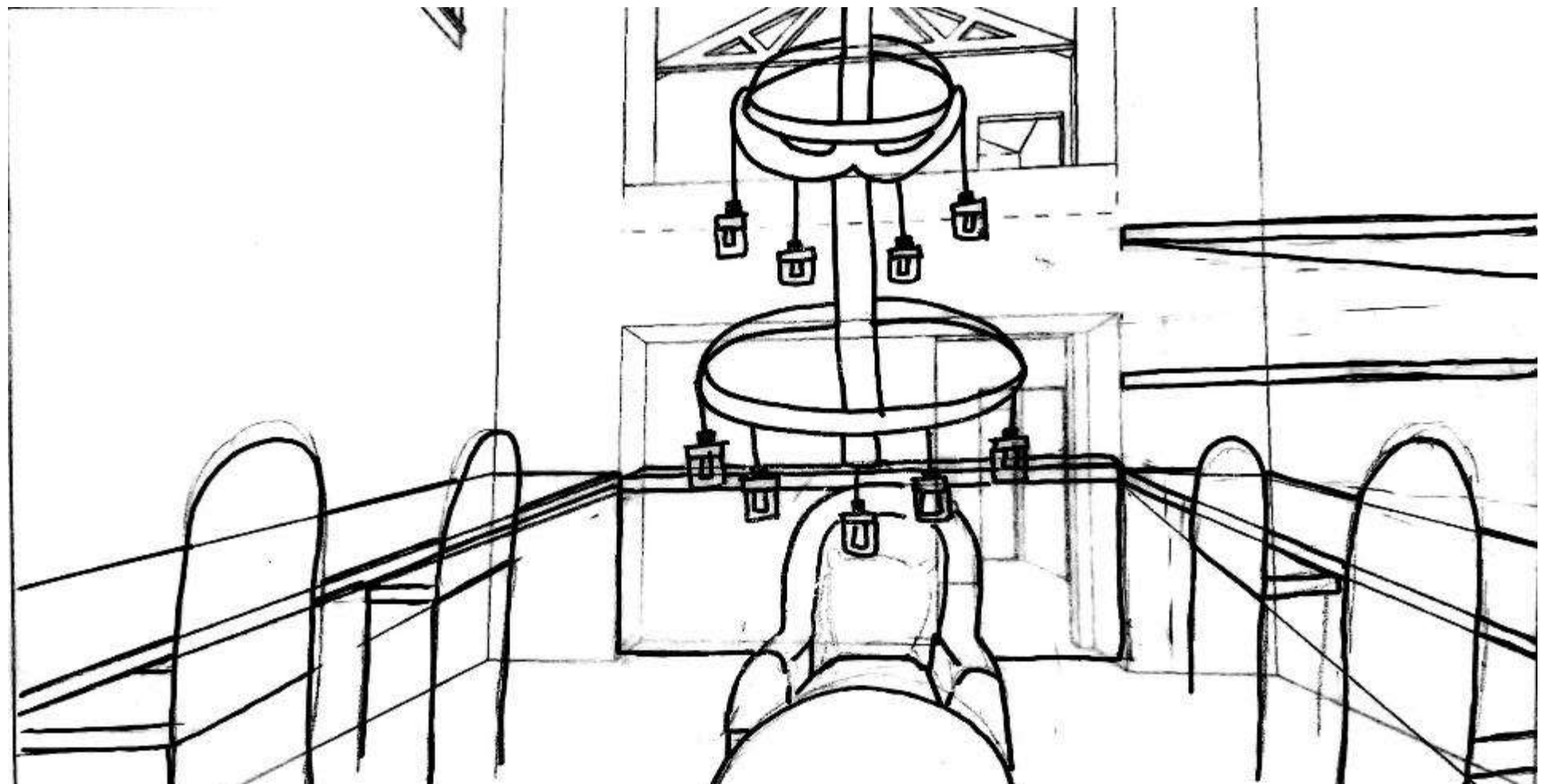
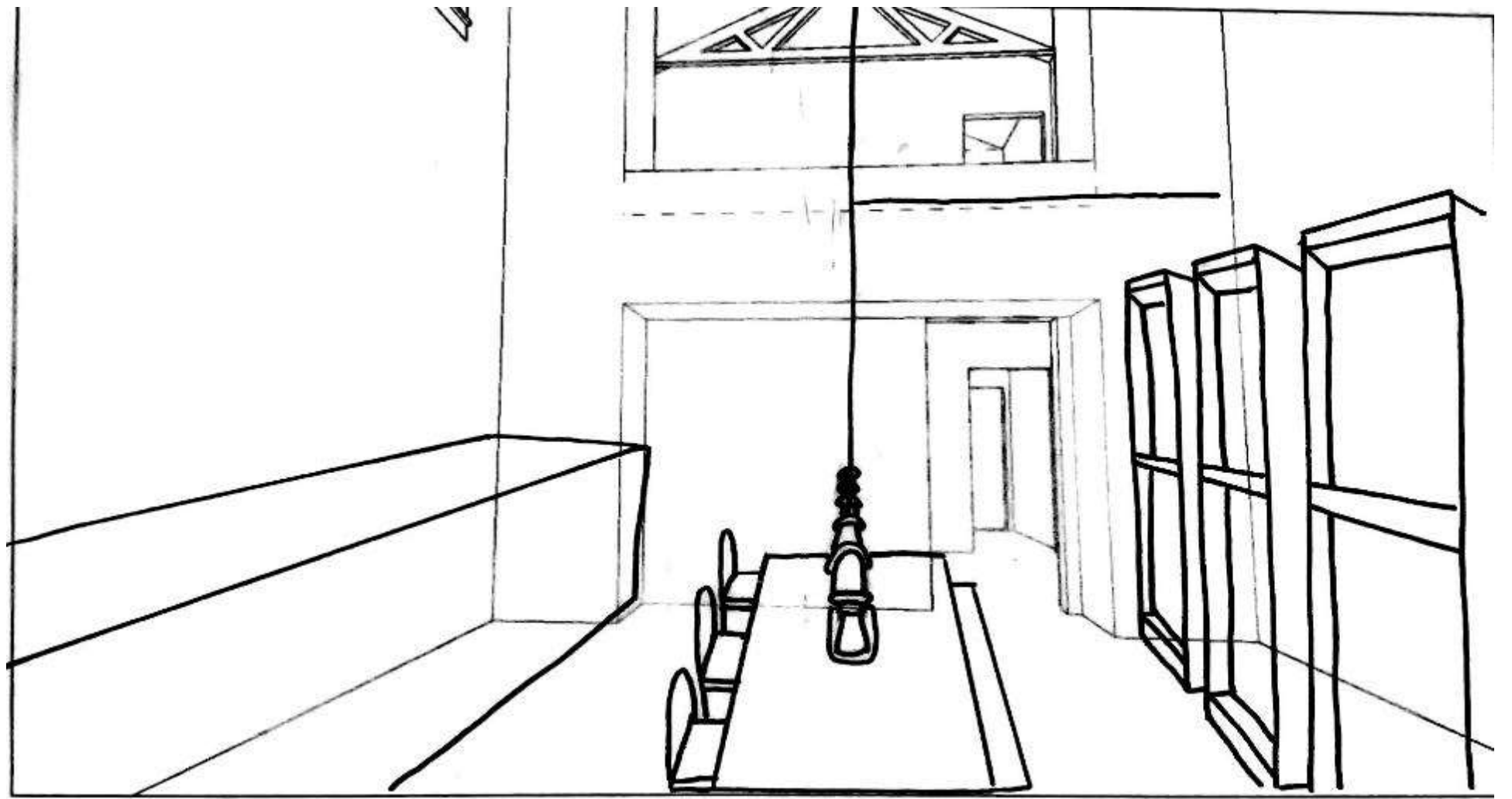


Cory Krajewski

IDSN 2102 F20

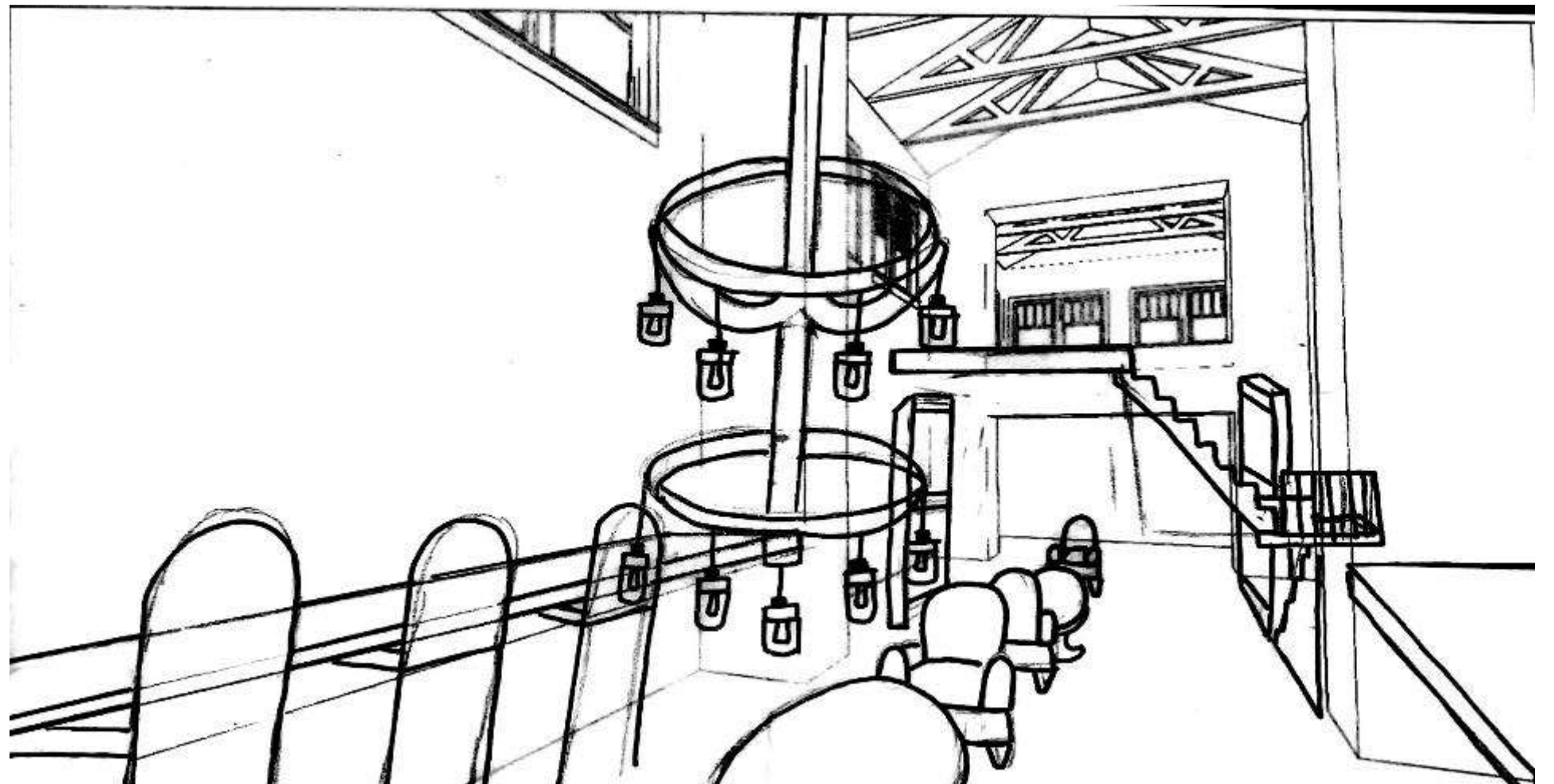
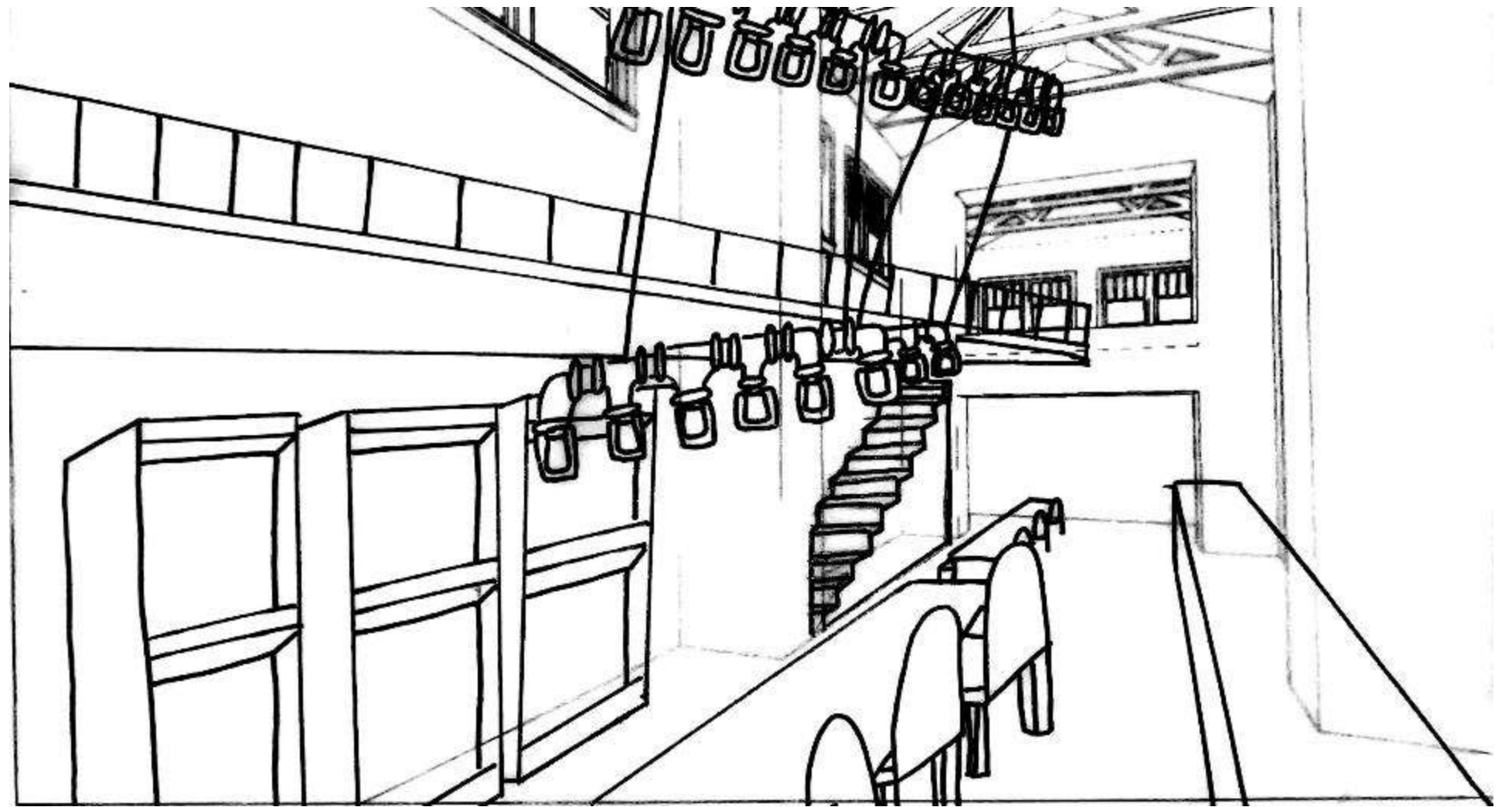


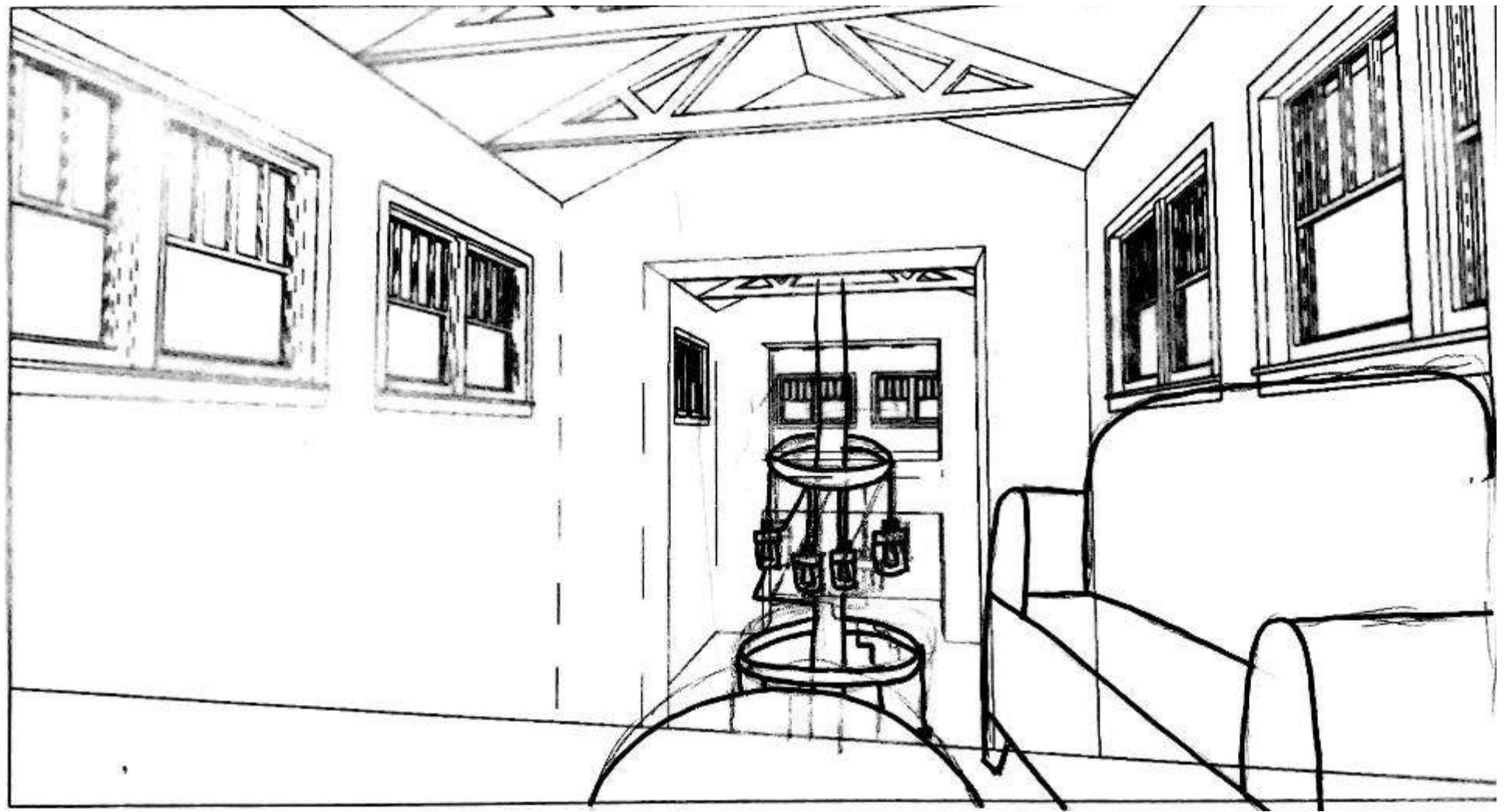
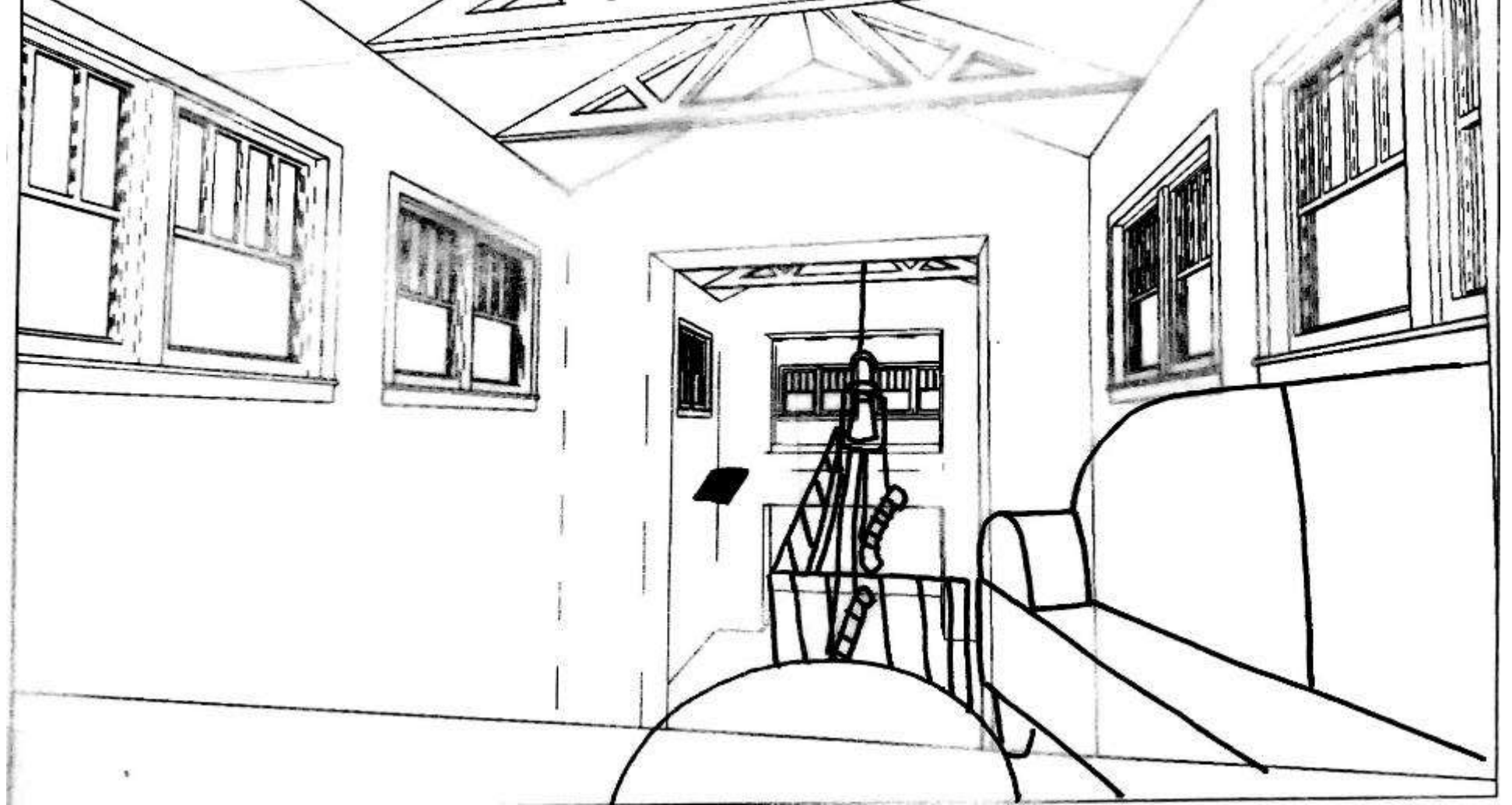
Cory Krajewski
IDSN 2102 F20



Cory Krajewski

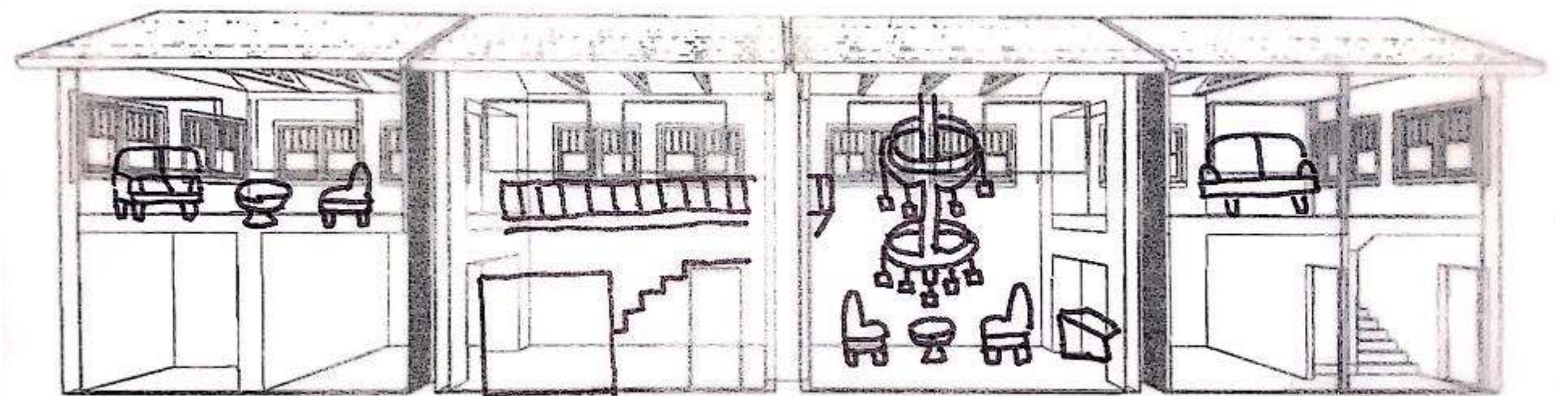
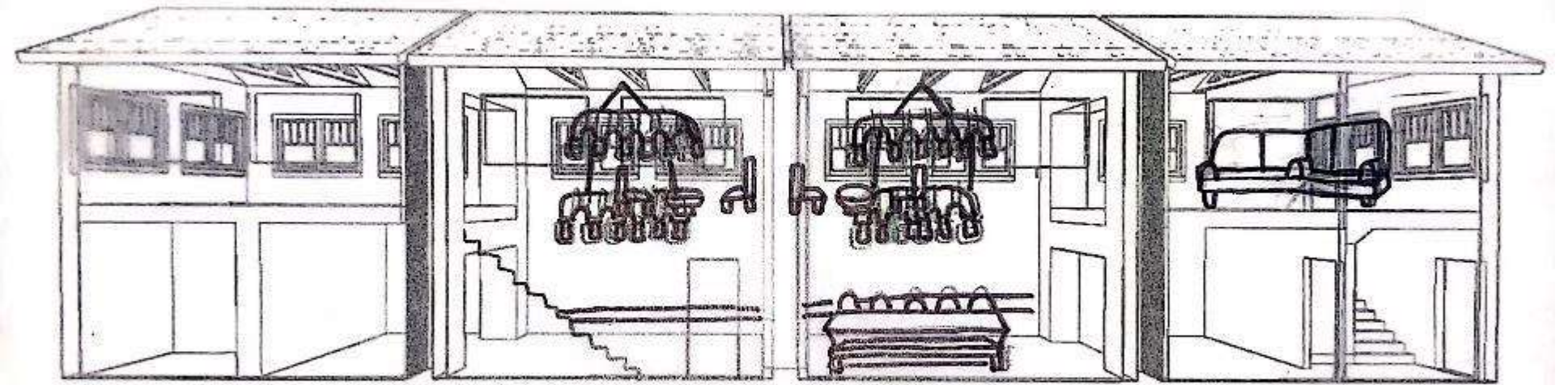
IDSN 2102 F20





Cory Krajewski

IDSN 2102 F20



Cory Krajewski

IDSN 2102 F20