

Tyana Lowery

IDSN 2102 F20

Portfolio 1

- Coffee House:

- Originated in the Middle East in the 1500's
- Different from pubs because they promote sobriety
- More conducive to conducting business/ became "centers of commerce"



Tyana Lowery

IDSN 2102 F20



Tyana Lowery

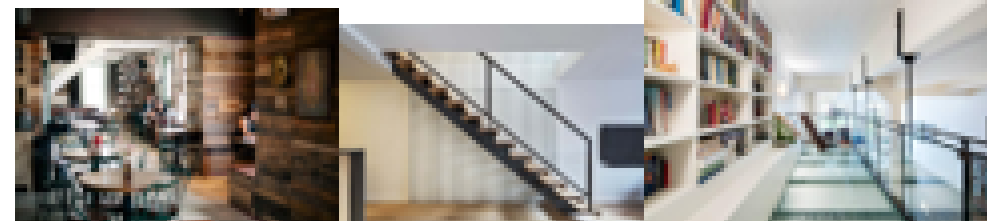
IDSN 2102 F20

User Profile: Who will be using this space?

- Millennial campus: Will be used by both university students and business professionals to meet and discuss business prospects/projects.

Design Problem Statement

- Connecting the two sides of the second floor with a bridge or stairs
 - Install a catwalk using pressed glass with tobacco leaves in between the glass
 - Still allows light to pass through from the second-floor windows to the first floor.
- 1. Have slightly tinted lights which gives off a sense of calmness like you are at home but not too dim because students still need to conduct business, thus creating a third place.
- 2. When the sun starts to set the lights in the building becomes brighter to make sure that the first floor is not too dark.
- 3. Stairs on either side of the building to get to the second floor and allow for emergency exits.



Tyana Lowery

IDSN 2102 F20

Site Profile:

- Location: S Green St & W 10th St



W 10th St



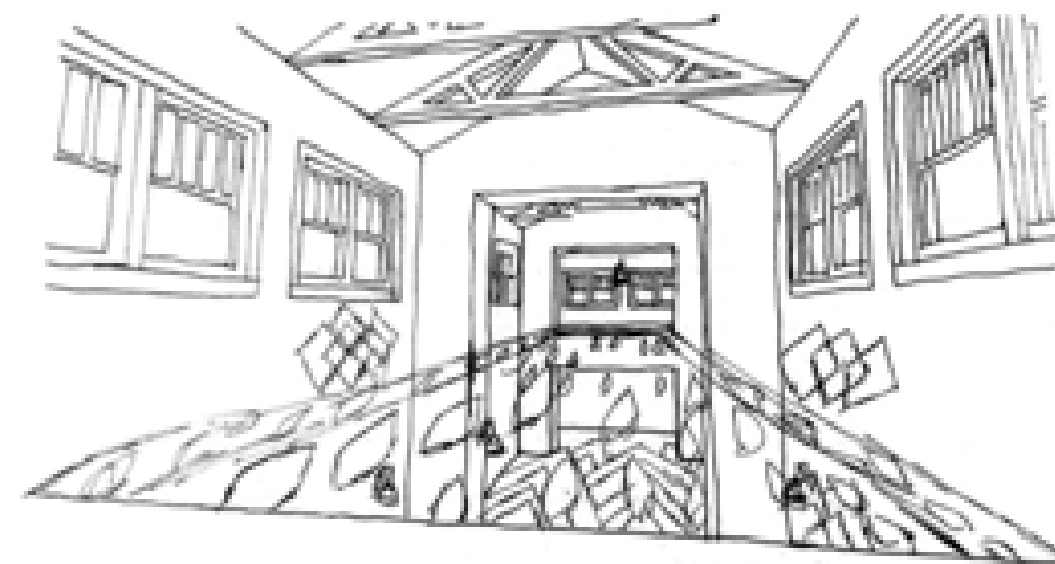
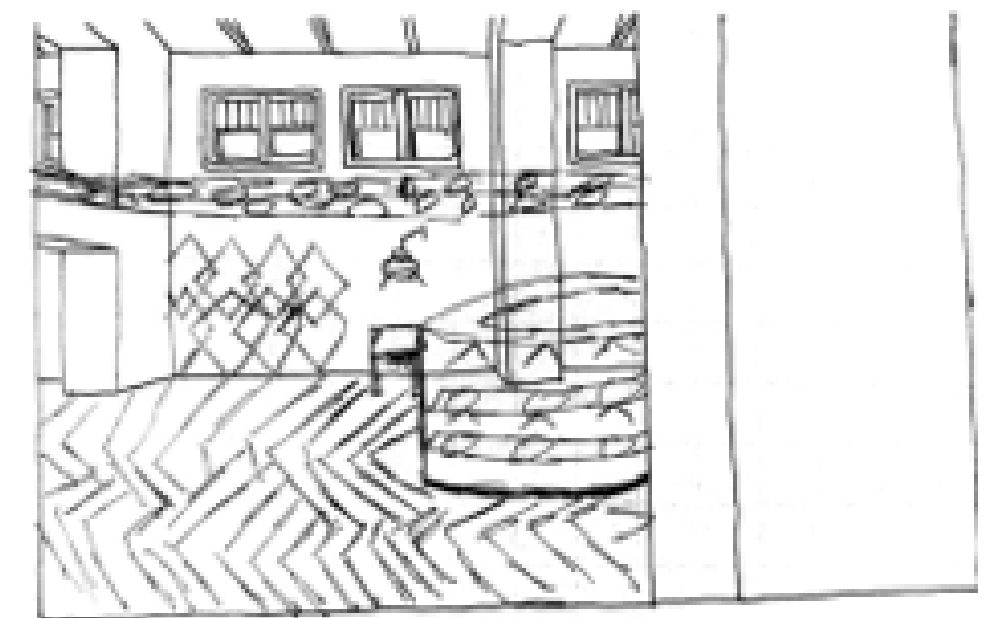
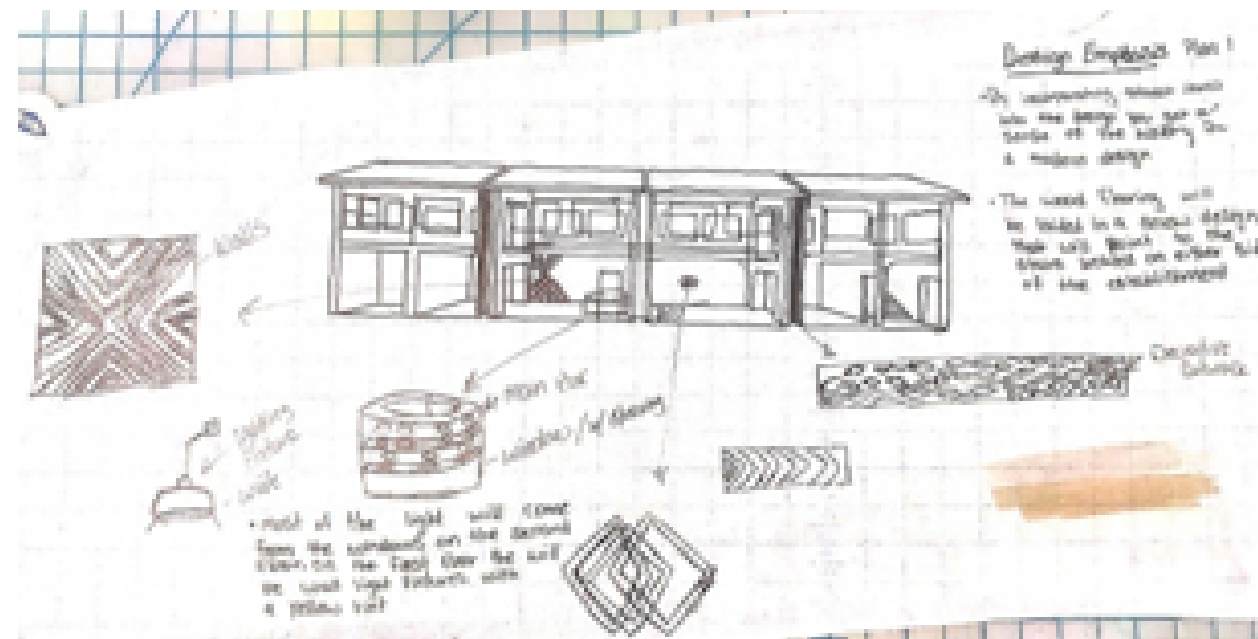
S Greene St

Site Analysis:



- The sun rises in the east and sets in the west
- (Blue arrow- main entrance)

Design Emphasis Plan 1



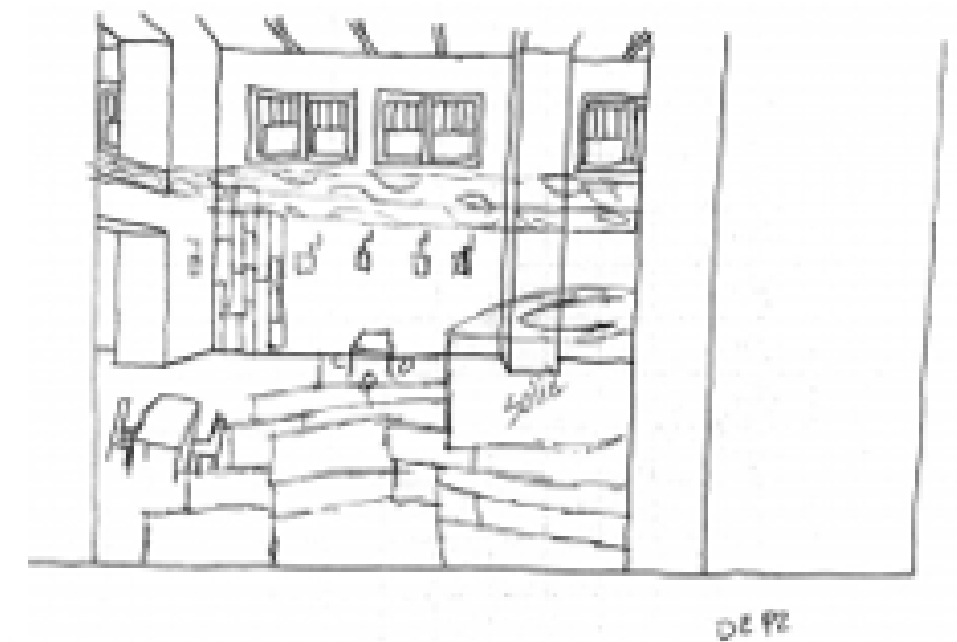
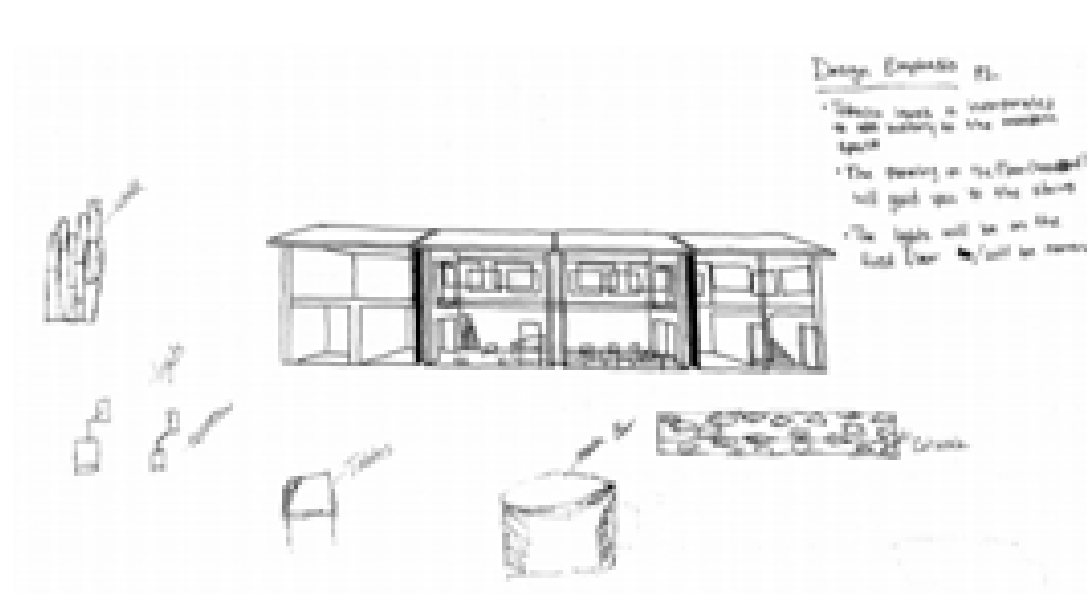
Tyana Lowery

IDSN 2102 F20

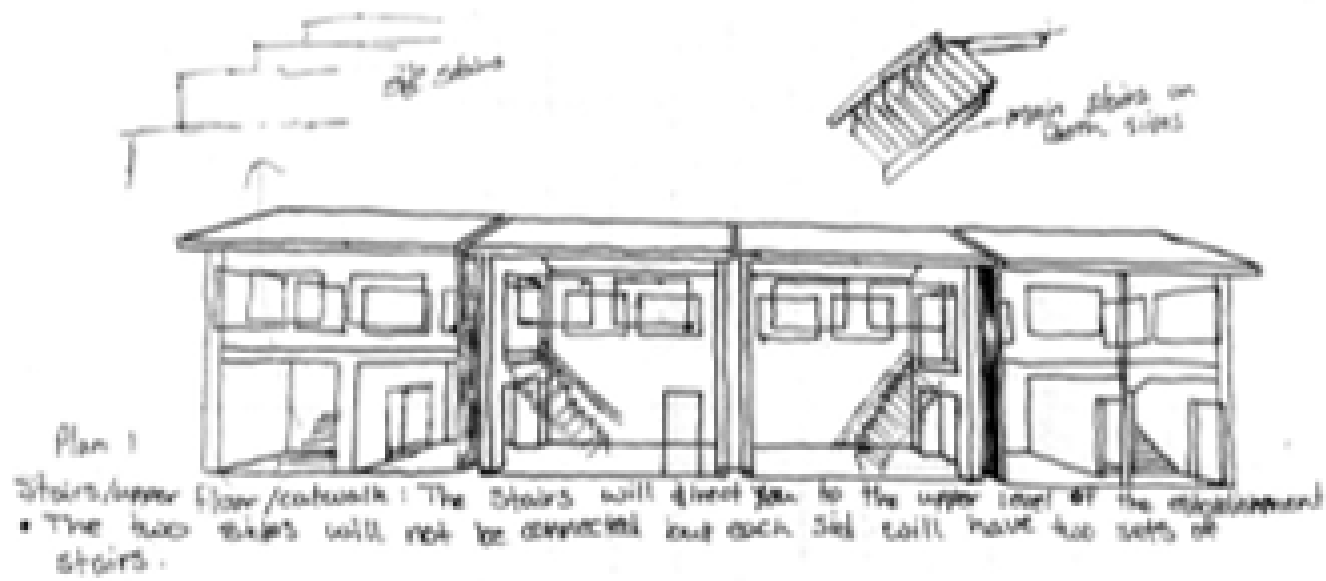
Design Emphasis Plan 2

Tyana Lowery

IDSN 2102 F20



Stairs and Catwalk Plan 1

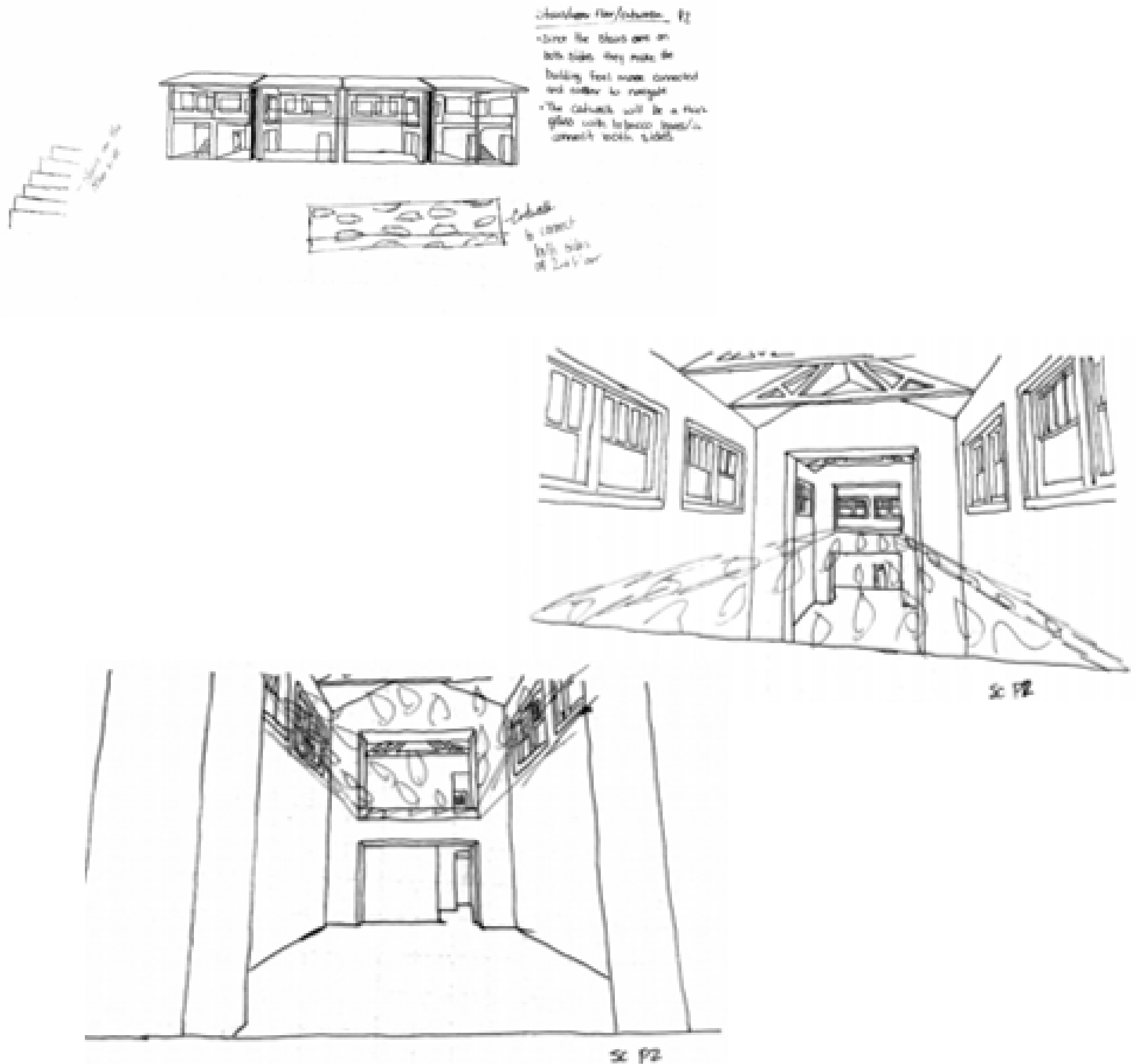


Tyana Lowery
IDSN 2102 F20

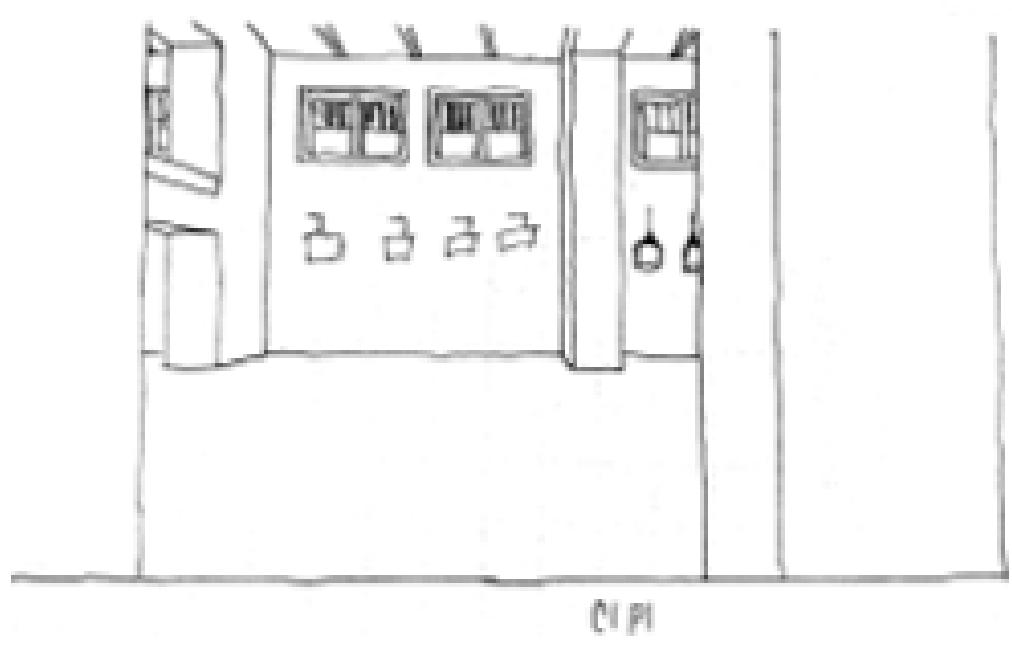
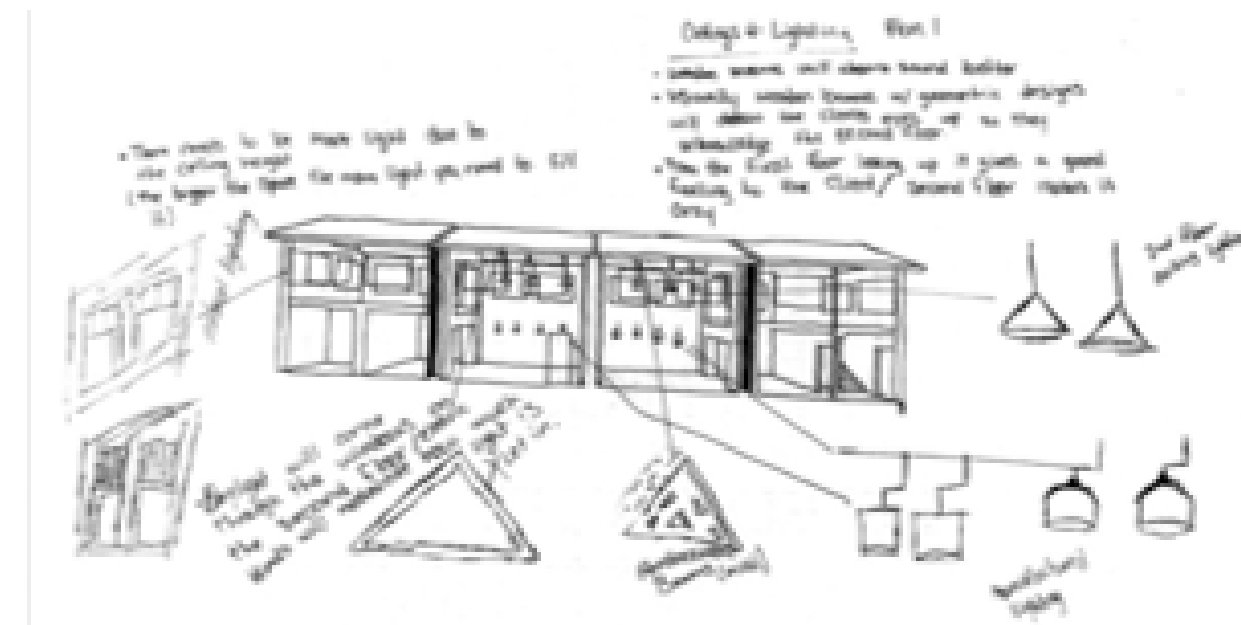
Stairs and Catwalk Plan 2

Tyana Lowery

IDSN 2102 F20



Ceiling and Lighting Plan 1



Tyana Lowery
IDSN 2102 F20

Ceiling and Lighting Plan 2

Tyana Lowery

IDSN 2102 F20

