

The background features a large, abstract graphic composed of several overlapping, semi-transparent circular bands. The bands are primarily in shades of light blue and light green, creating a sense of depth and movement. The bands are arranged in a way that they appear to be part of a larger, incomplete circle or a series of concentric rings that have been offset from each other.

# Portfolio 1

Maythi Perez Garcia



### Millennial Campus

- ❖ A millennial campus is a location that is an extension of a college or university that partners with privately owned businesses to promote innovation and discovery
- ❖ ECU is in the process of working on their soon to be millennial campus
- ❖ ECU has partnered with privately owned businesses to renovate and construct the campus in uptown Greenville
- ❖ Many of the buildings used on this campus will be in the renovated tobacco mills, as well as, the newly constructed health sciences building across the street



### Third Space

- ❖ A third space is the place a person spends most of their time, not including their home and work, which, is their first and second space.
- ❖ A place that is a third space provides a number of things for its patrons, most important is a comfortable environment.
- ❖ Establishments like cafés, bars, and lounges are often found to be people's third space.
- ❖ It is in these spaces that people can relax, work, focus or socialize.
- ❖ Depending on what the patrons are looking for in their third space, businesses need to ensure to provide suitable service, like wireless internet, meeting spaces, discounts or promotions for regular customers, etc.



### Inspiration

- ❖ Business workspace
- ❖ Cafe, wine bar open after 6pm
- ❖ Business services, screens, meeting spaces, printing, scanning, shredding available



## User Profile

### ❖ *Professionals*

- Business professionals in the area
- Coffee stop
- Business professionals looking for an appropriate place to meet coworkers after hours
- Professionals who work virtually or “from home”
- Leisure
- Business services

### ❖ *Students*

- Ideal for students in high school or students studying higher education
- Most ideal for ECU students, due to proximity to campus
- Coffee stop
- Study space
- Meeting space
- Leisure
- Business services

### ❖ *Professors*

- To meet colleagues or students
- To work
- Coffee stop
- Leisure
- Business services

### ❖ *Tutors*

- Meeting space – privately or open area

### ❖ *Other*

- People in need of a workspace, meeting space or business services
- People in need for a coffee on the go
- People in need for a relaxing semi-professional place to unwind
- Everyone intended to utilize the millennial campus, students and business professionals alike



## Site Profile

### ❖ Location

- This building will be located on the corner of S Greene Street and W 10<sup>th</sup> Street in Uptown Greenville.
- This location is extremely close to the East Carolina University campus
  - It is only a two-minute walk from the Student Center to the Café Workspace, it is only a 0.5 mile distance



The lot where the building will sit. As well as the view behind the building.



The Export Leaf Tobacco Factory – soon to be Haynie Building of the millennial campus. View opposite the café workspace.



Northwest view from the café workspace, looking onto 10<sup>th</sup> Street.



North view from the café workspace, looking directly onto 10<sup>th</sup> Street.



Northeast view from the café workspace, looking onto 10<sup>th</sup> Street.



View behind the café workspace, looking down Greene Street.



## Site analysis

### ❖ *Daylight*

- Majority of the windows on this building line the west and east walls. Meaning, it will get plenty of sunlight throughout the day.
- Additionally, there are two double windows on the north and south walls.

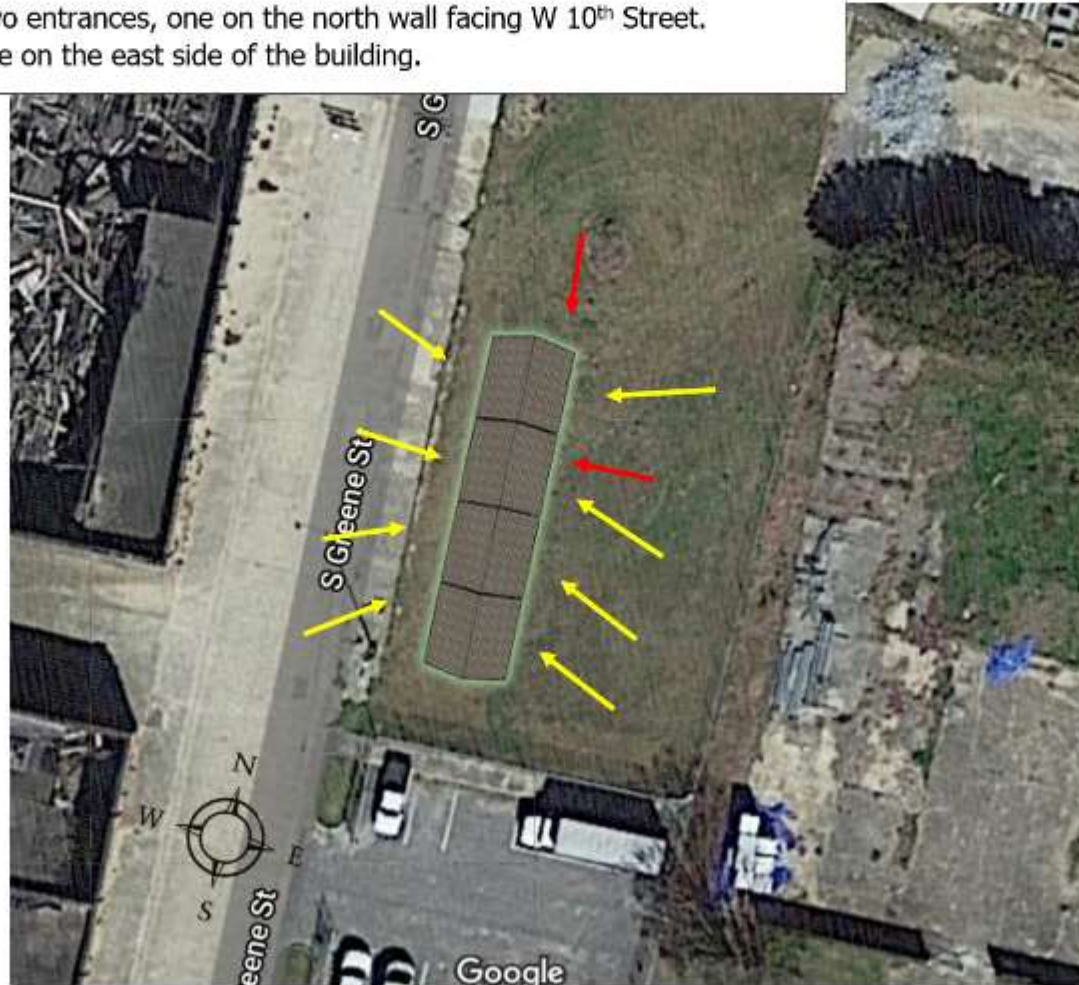
### ❖ *Entrances*

- There will be two entrances, one on the north wall facing W 10<sup>th</sup> Street.
- The other will be on the east side of the building.

Daylight



Entrance



Maythi Perez Garcia IDSN 2102 F20



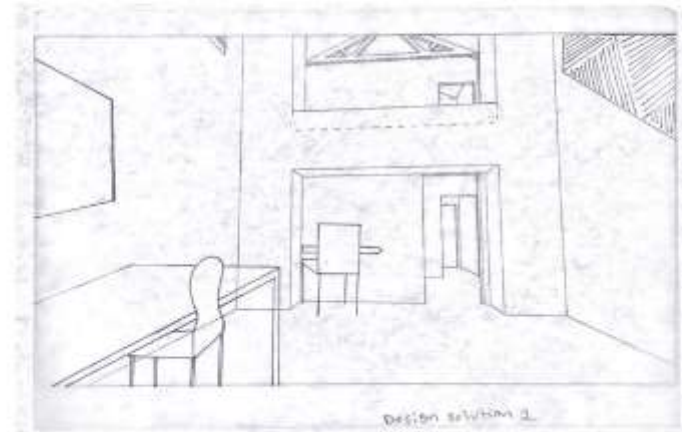
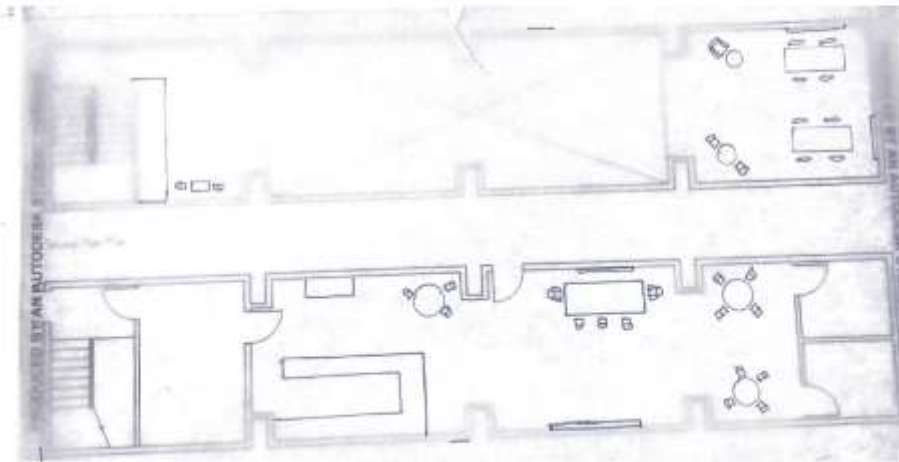
### **Design Problem Statement**

- ❖ There are multiple design aspects set to make this space enjoyable yet functional.
  - There will be a business center
    - Printing, scanning, faxing and wireless internet available
  - Meeting rooms
  - Screens available for use
    - Including a projector in the meeting rooms
  - Sound reducing panels will be strategically placed throughout the space to foster a quiet work environment
  - Coffee will be sold
  - Wine will be sold in the evenings
  - Furniture will have both a professional and comfortable approach

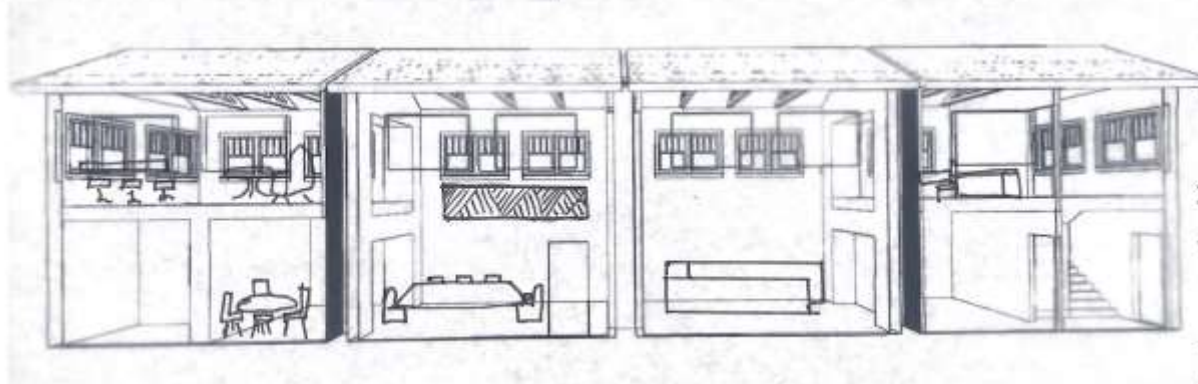
## Problem Resolution Sketches

### ❖ *Design Emphasis Solutions*

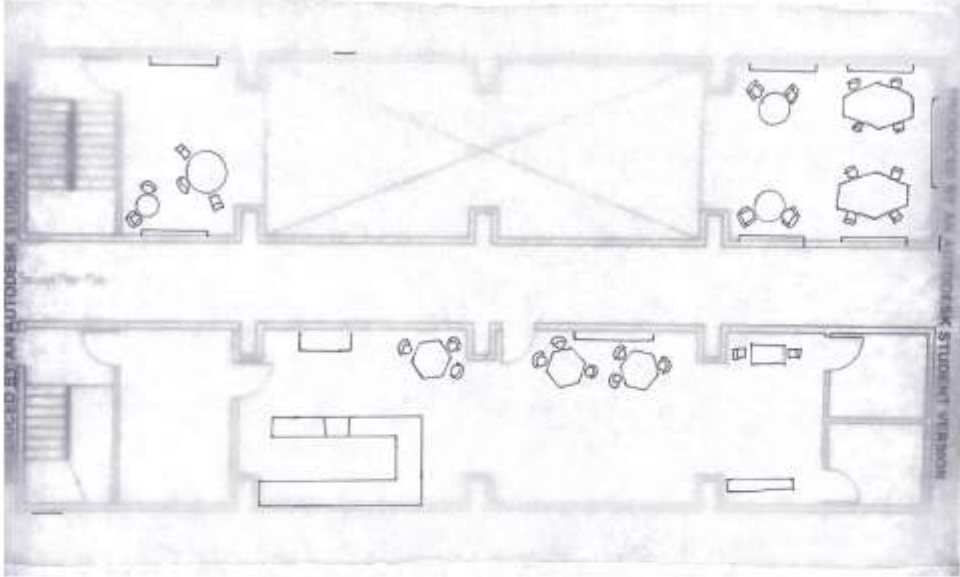
- This design appeals most to students and business professionals
  - By offering coffee services, business services, meeting rooms and comfort.
- A customer would need to walk through the space and go upstairs to use the business services.
- The meeting rooms are also located upstairs
- The windows are all on the second floor, so it will get great daylight in the morning and afternoon hours
  - The second floor also has a large open space in the floor so the daylight will brighten the first floor as well
  - The first floor has more artificial lighting
- This design also includes sounds reducing panels



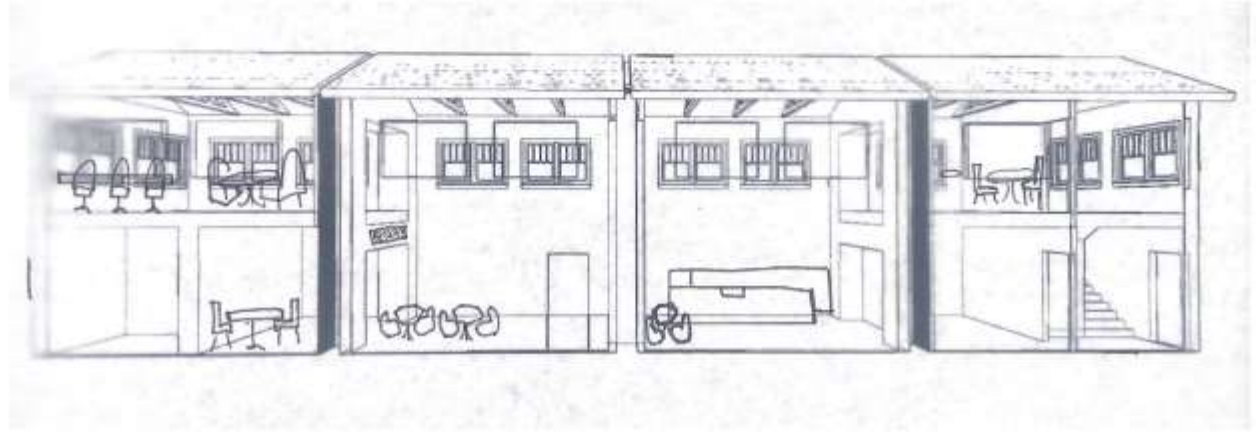
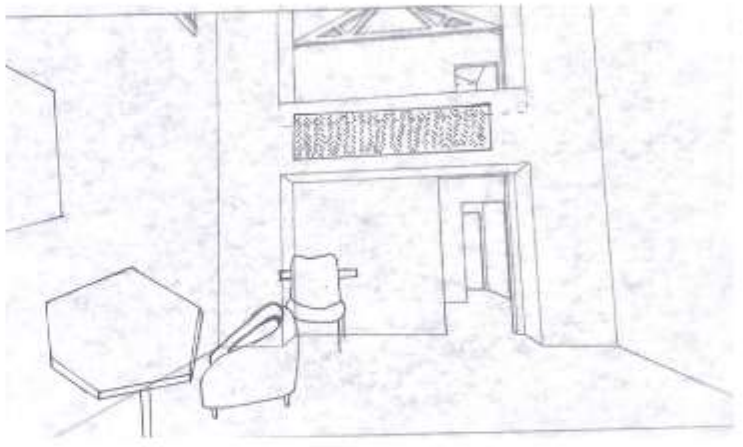
Design Solution 1







Design Solution 2



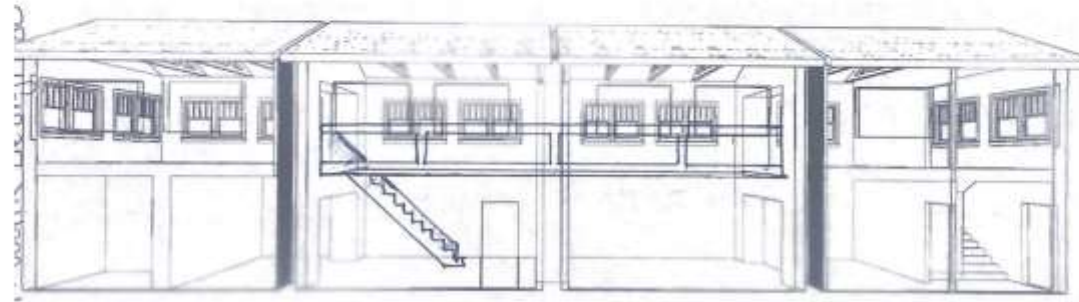
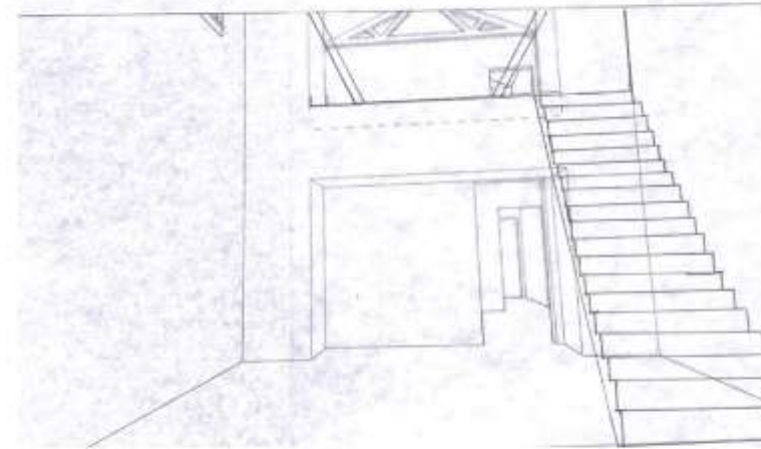
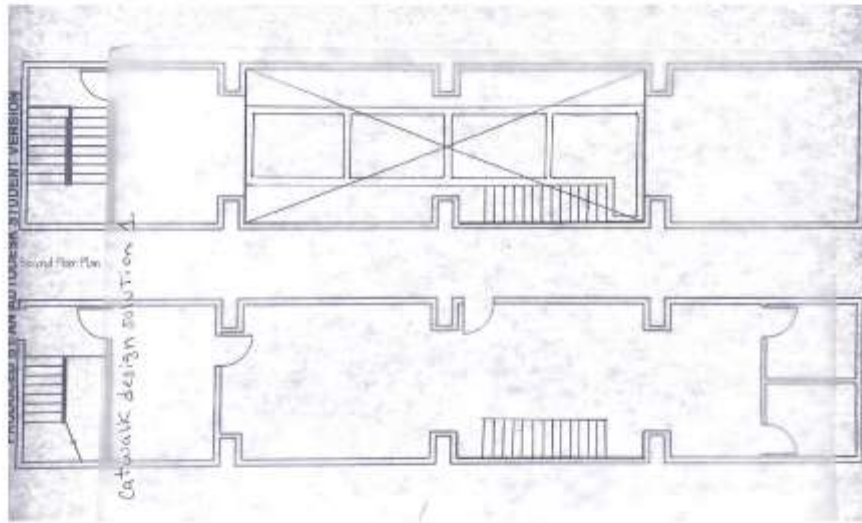
**Maythi Perez Garcia IDSN 2102 F20**

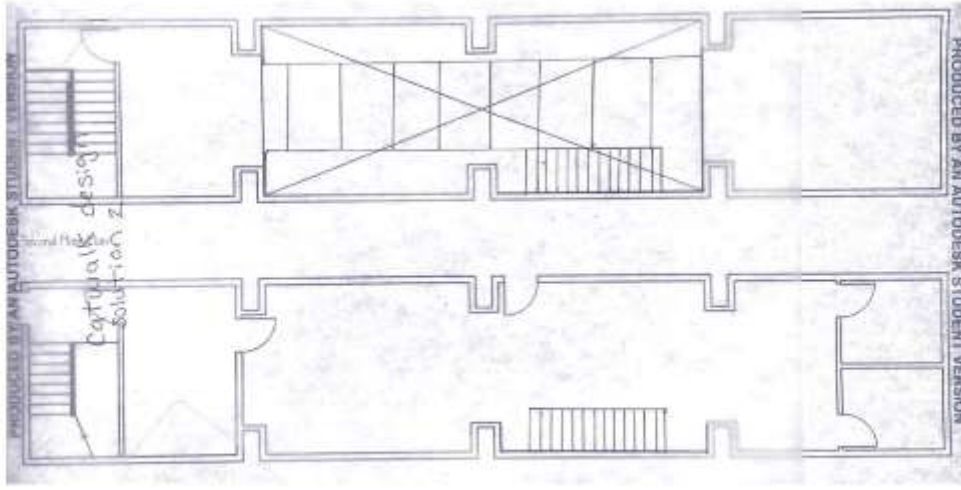
## Problem Resolution Sketches

### ❖ *Stairs/ Upper Floor/ Catwalk*

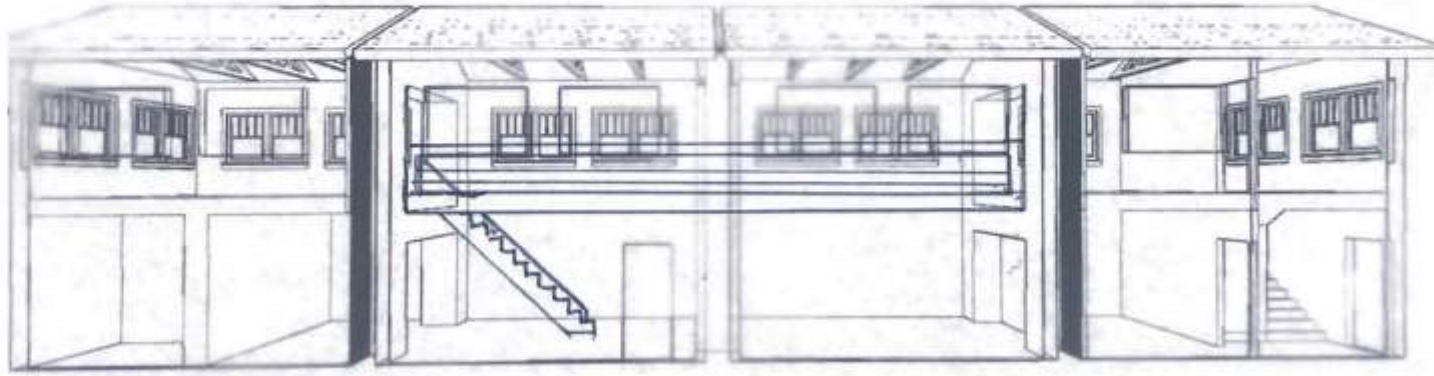
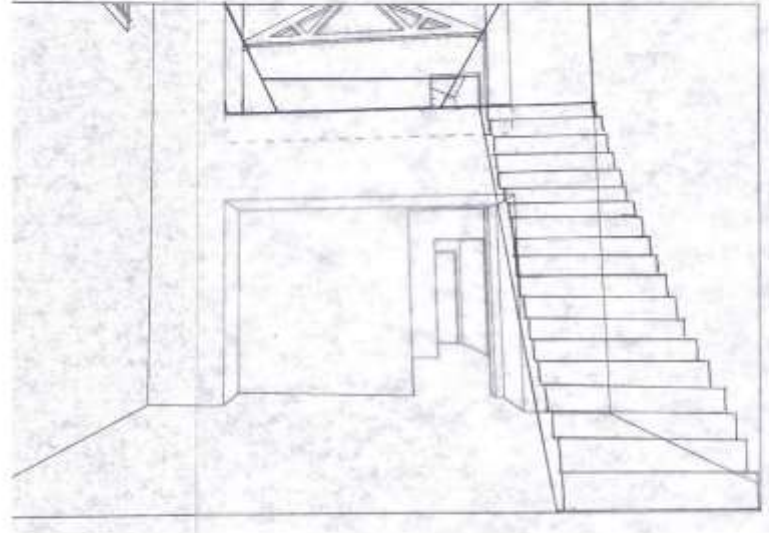
- The location of the stairs is directly in front of the entrance on the east side of the building
- The connection of the two parts of the upper level is made by a small catwalk
- Design 1 features four glass panels that allow a view to below
- Design 2 has smaller panels that alternate from glass to farmhouse wood

Upper Floor Solution 1





Upper Floor Solution 2



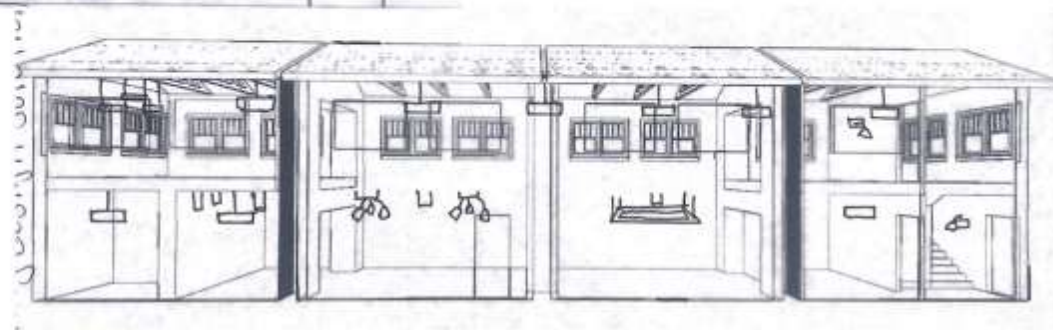
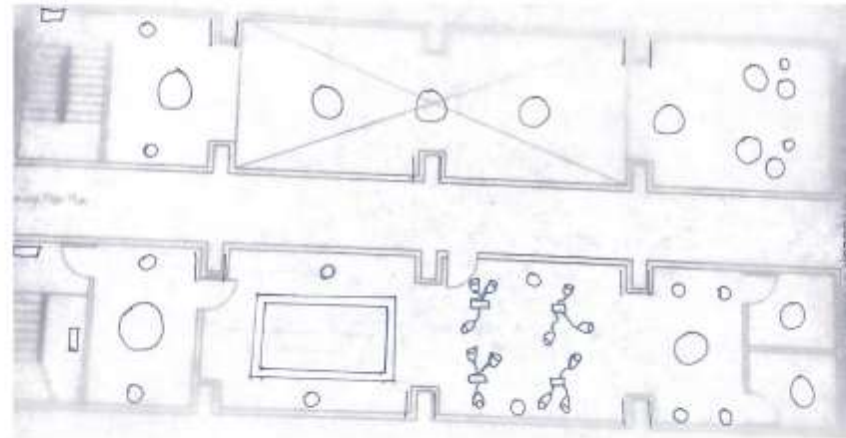
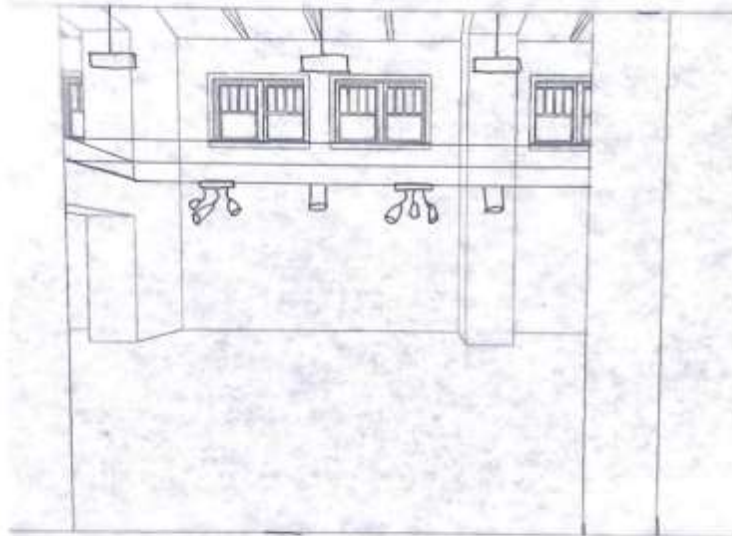
**Maythi Perez Garcia IDSN 2102 F20**

## Problem Resolution Sketches

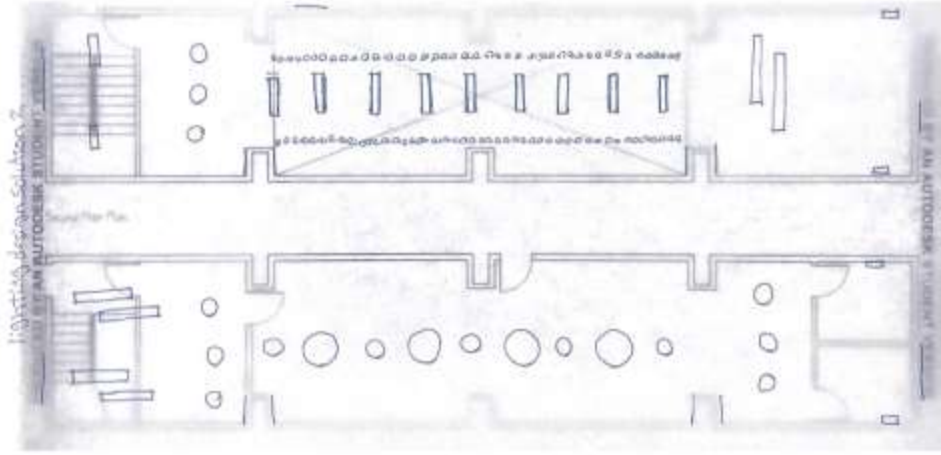
### ❖ *Ceilings and Lighting*

- The ceiling remains the same and exposed
  - To fight the acoustics issue, both designs feature sound reducing panels
- The light fixtures hung from the ceiling have long cables so they can be hung at the appropriate level to give the best lighting

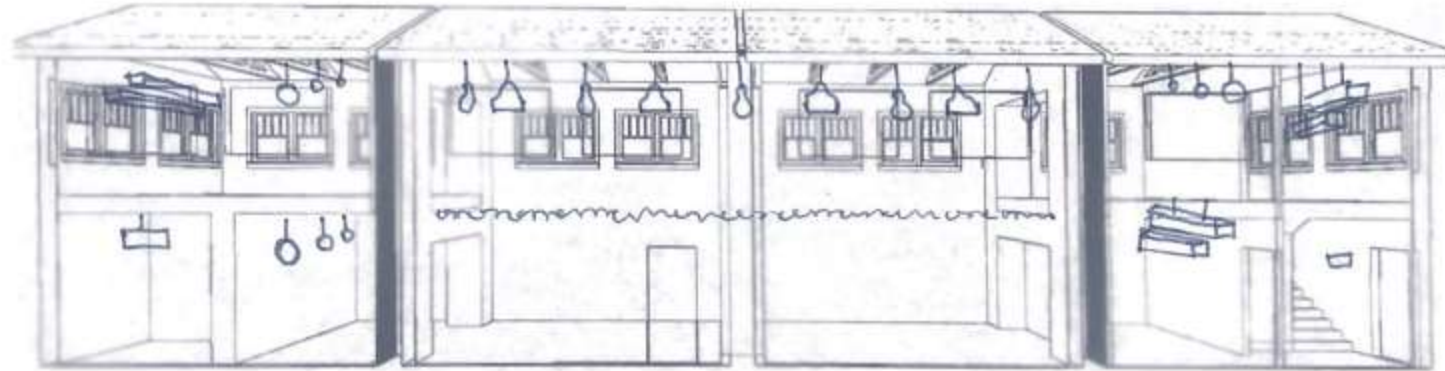
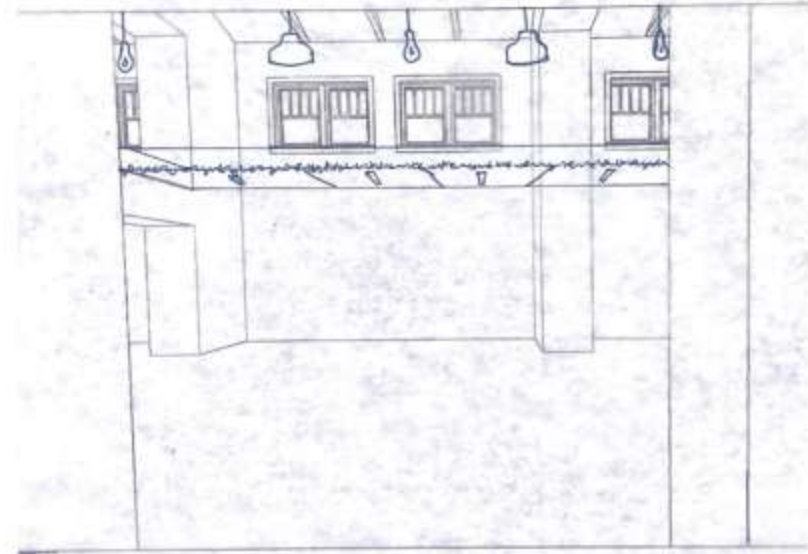
Lighting Design Solution 1



Maythi Perez Garcia IDSN 2102 F20



Lighting Design Solution 2



**Maythi Perez Garcia IDSN 2102 F20**