

PORTFOLIO ONE

PAIGE POTTLE

IDSN 2102

FALL 2020

ASSIGNMENT 1

Research topic 1:

East Carolina University's Millennial Campus

“The focus of the millennial campus will be on attracting, training and retaining skilled workers, many of whom will be ECU graduates”

“closely engaged with civic and business leaders in the region to develop shared economic development goals and to define ways ECU can help achieve those goals”

It will be essential to include the community in the millennial campus space and embody Eastern Carolina's identity.

PAIGE POTTLE

IDSN 2102 F20



ASSIGNMENT 1

Research topic 2:

The Third Place

- This 'third place' focuses on community connections by providing a space to display, promote and sell local products.
- Lots of seating provided for people coming to eat from a food truck or grabbing a beer after work
- Open concept downstairs and room for local products to be displayed
- Quieter, more private space upstairs – booth seating for meetings and people staying around to work

PAIGE POTTLE

IDSN 2102 F20



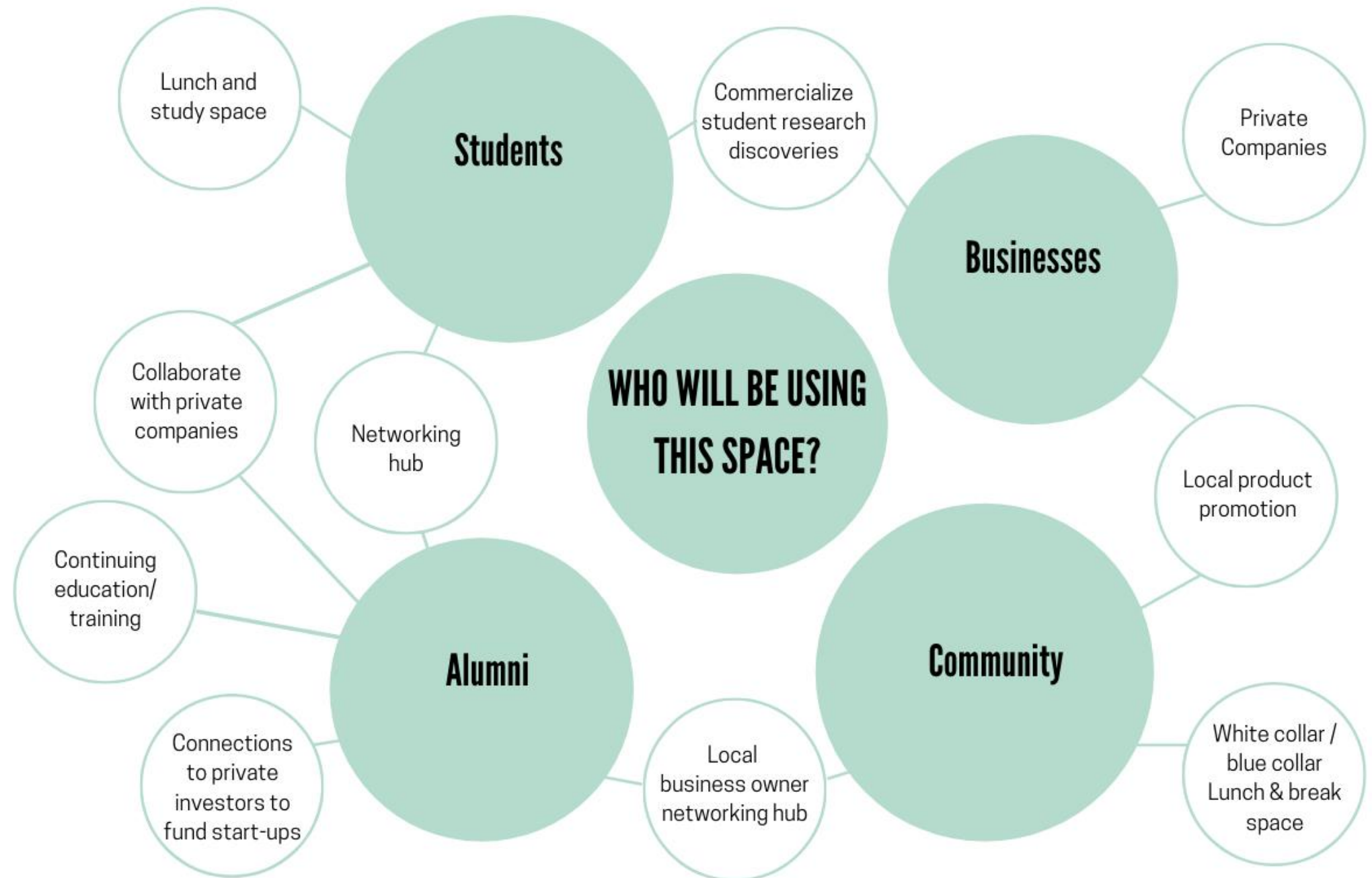
ASSIGNMENT 2

User Profile

- The proposed millennial campus for East Carolina University would be an educational hub for Eastern NC.
- ECU, The largest public educational institution east of I-95 plays a critical role in shaping the eastern part of the state.
- By supporting & nurturing the ideas of students & local community, ECU will continue to cultivate Eastern North Carolina while retaining the foundation that makes this part of the state unique

PAIGE POTTLE

IDSN 2102 F20



ASSIGNMENT 2

Site Profile

- The site chosen for the cafe/retail space is at the corner of S. Greene St. and W 10th St
- The location is positioned in the middle of ECU's millennial campus and borders Greenville's nationally registered warehouse district.
- 10th street is a major, heavily trafficked road especially for people who learn/work at the medical campus. This location is kind of an in-between for the two campuses and would serve as a joining point.

PAIGE POTTLE

IDSN 2102 F20



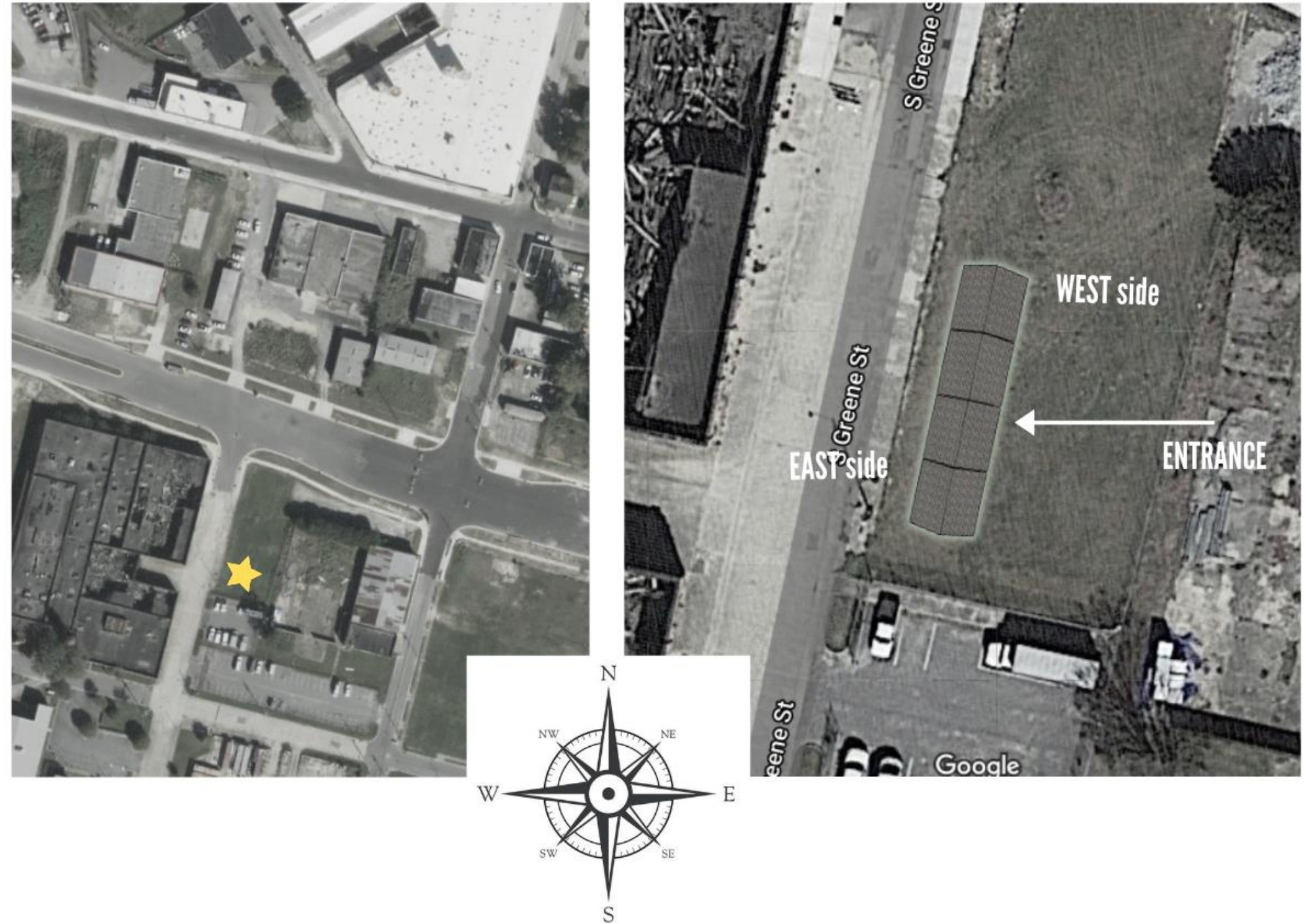
Lot view from 10th street, traveling east

ASSIGNMENT 2

Site Analysis

- The position of the building will allow for a lot of great natural lighting in morning and late afternoon, through the upper windows.
- While the position is not great for additional winter-time rays, it will reduce glare in the building from constant direct sunlight.
- An interior entrance was chosen in order for access to rotating food trucks.

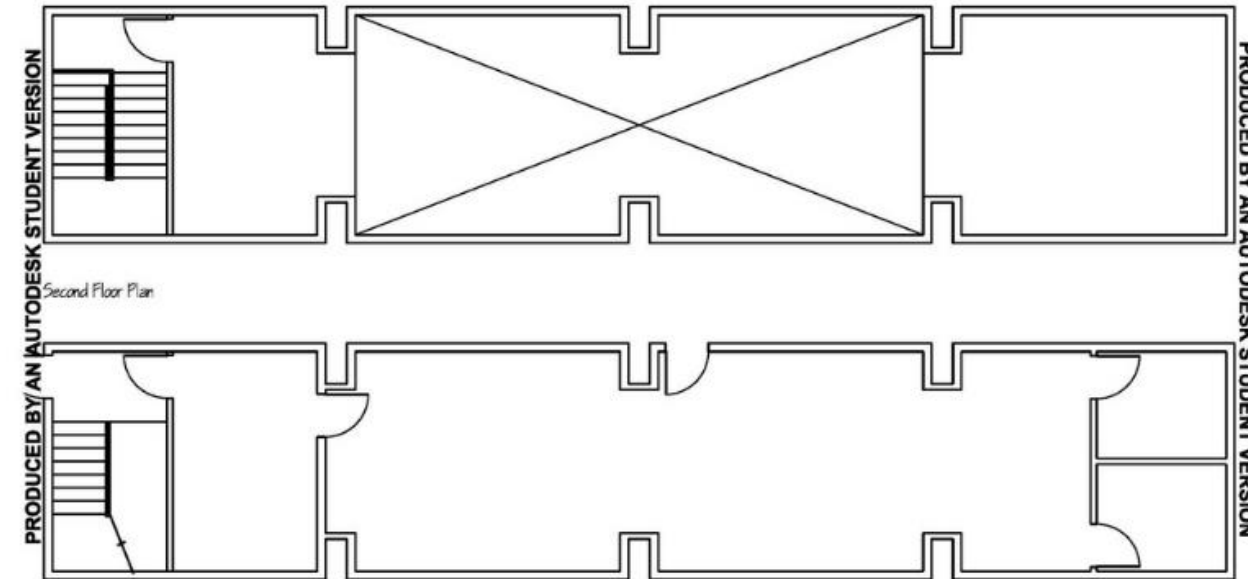
PAIGE POTTLE
IDSN 2102 F20



ASSIGNMENT 2

Design Problem Statement

- The design presented takes into consideration the small size and narrow dimensions of the barns.
- Space was maximized by pushing the bar up against one side of the room and moving any sort of private booth seating upstairs

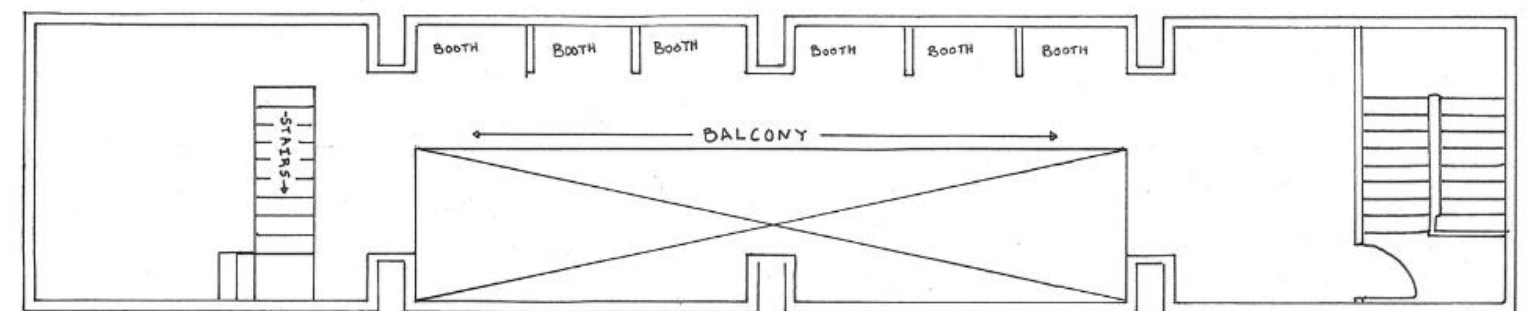
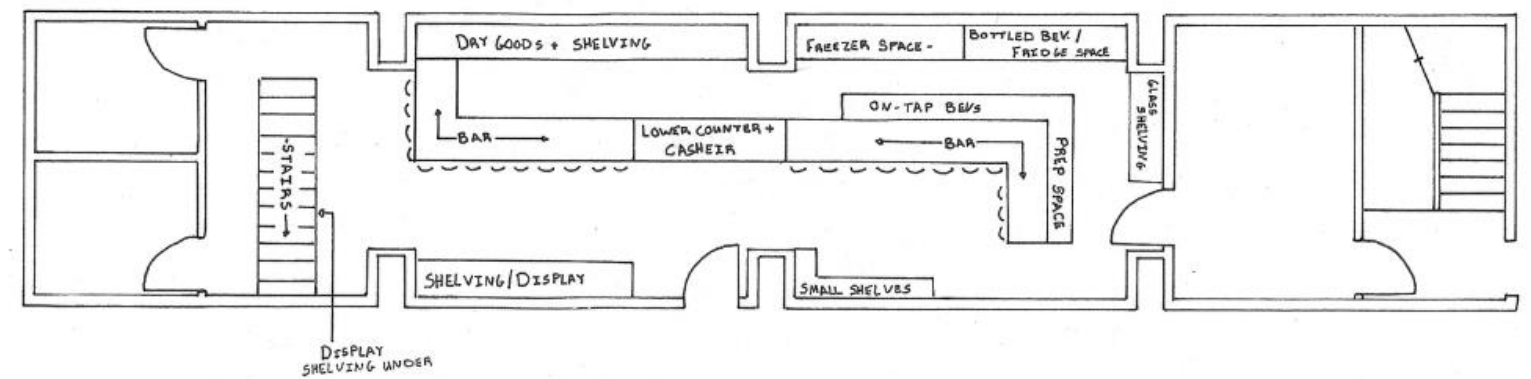
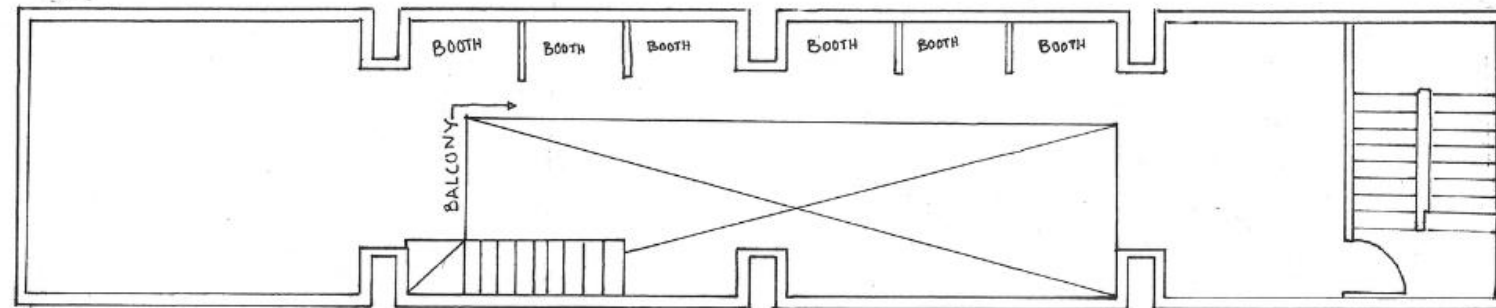
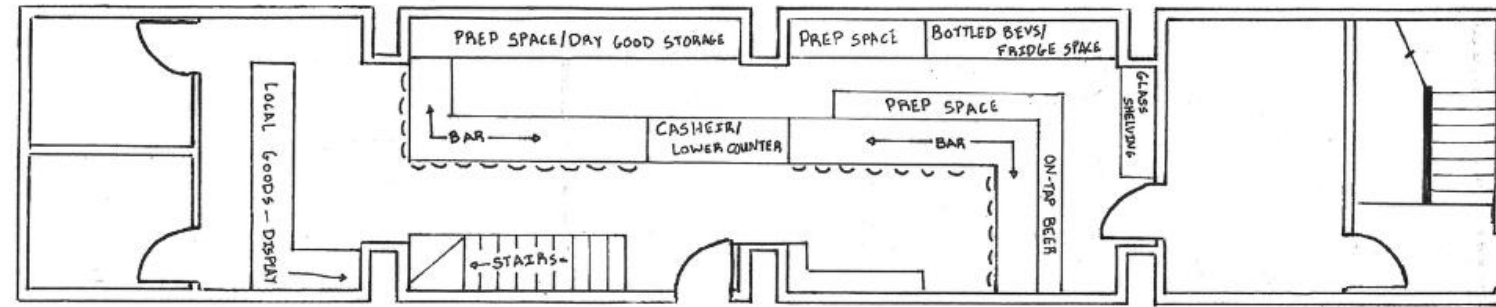


PAIGE POTTLE

IDSN 2102 F20

ASSIGNMENT 3

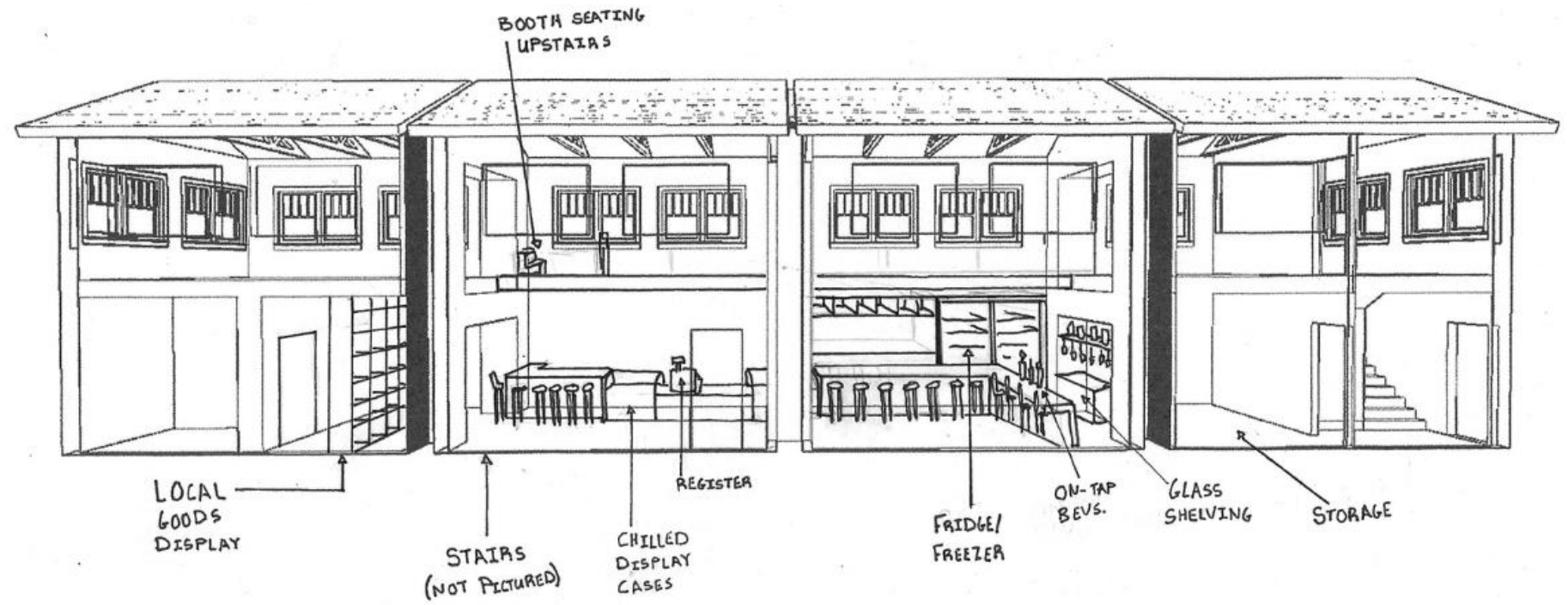
Problem Resolution Sketches



PAIGE POTTLE
IDSN 2102 F20

ASSIGNMENT 3

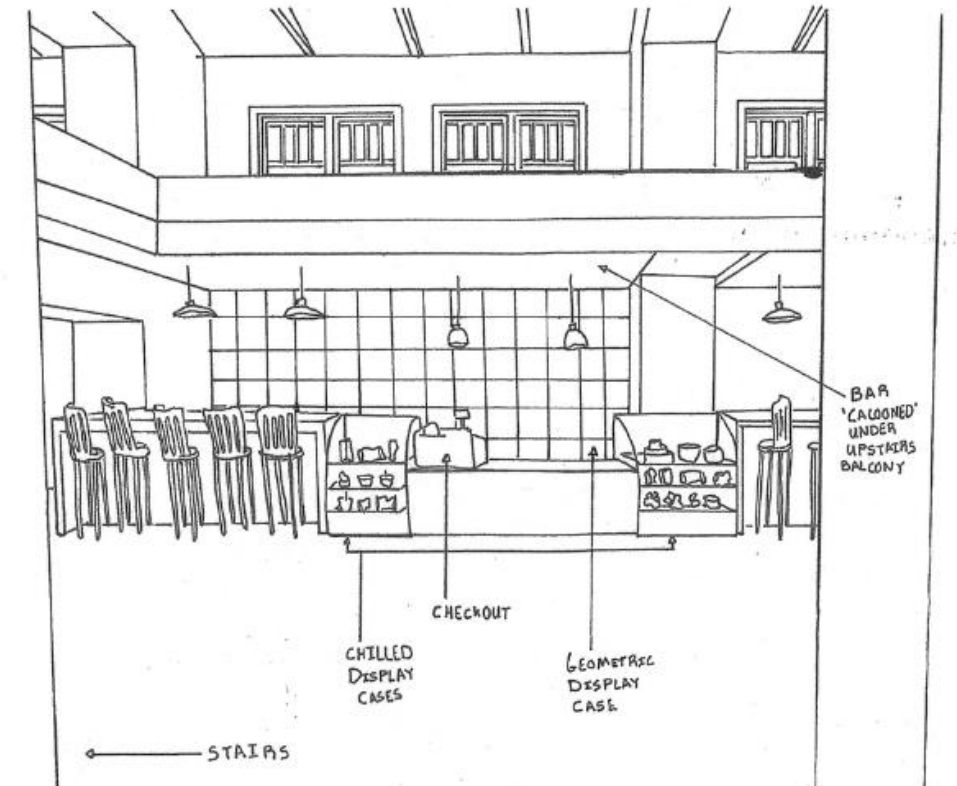
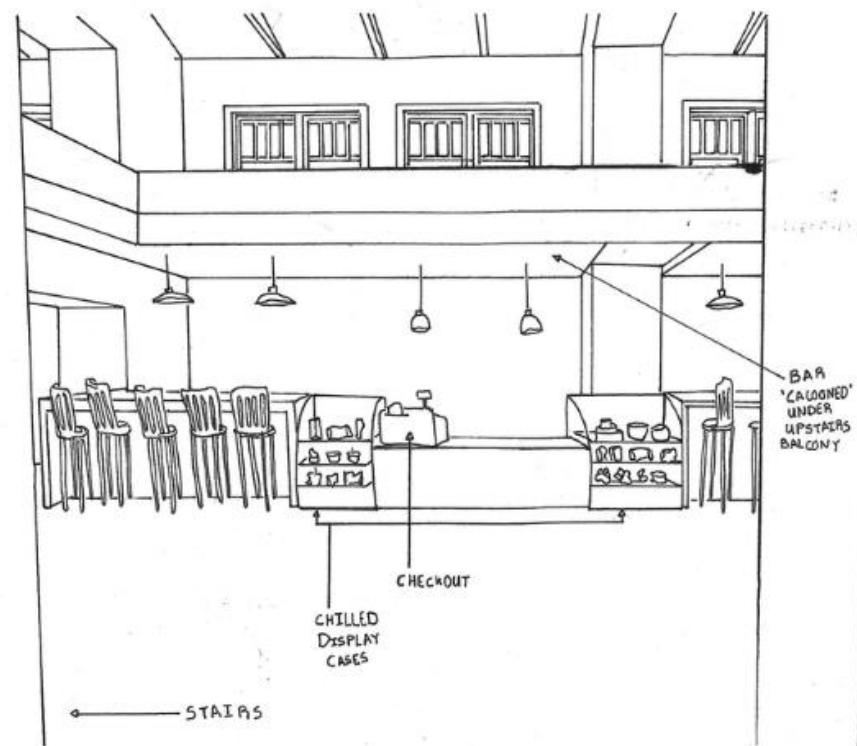
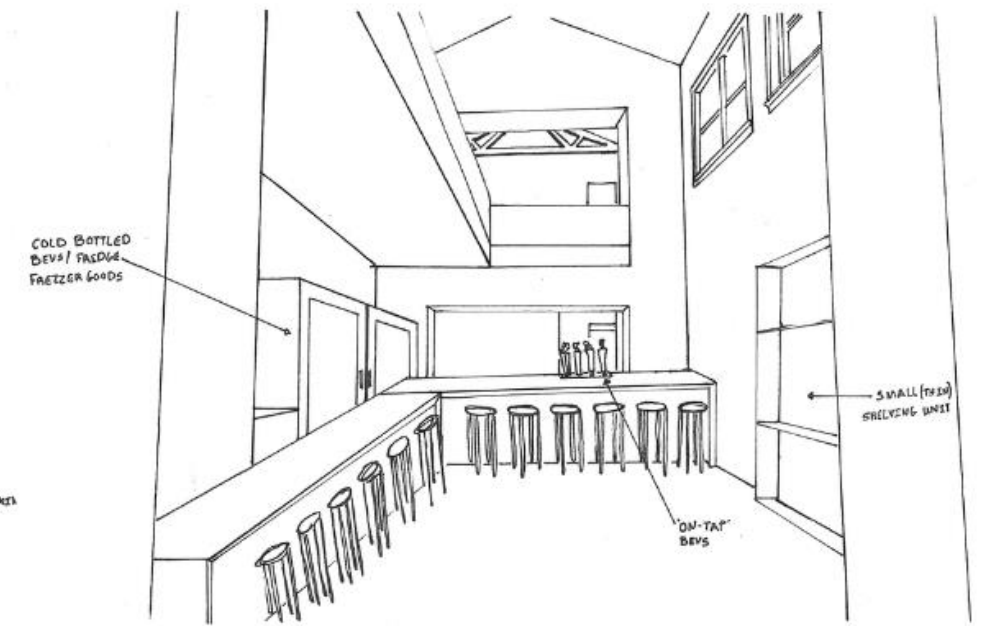
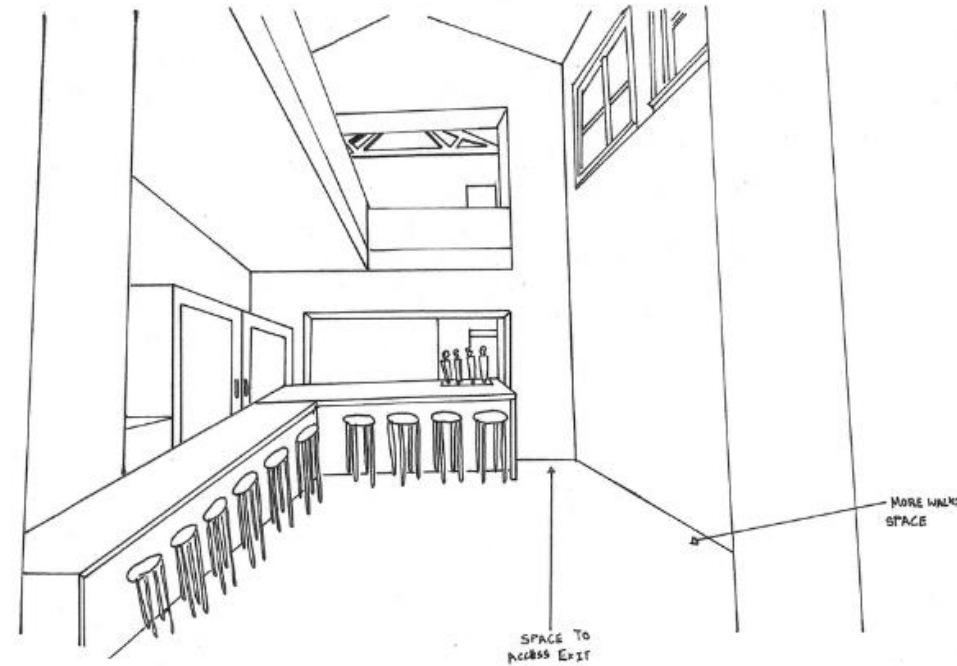
Problem Resolution Sketches



PAIGE POTTLE
IDSN 2102 F20

ASSIGNMENT 3

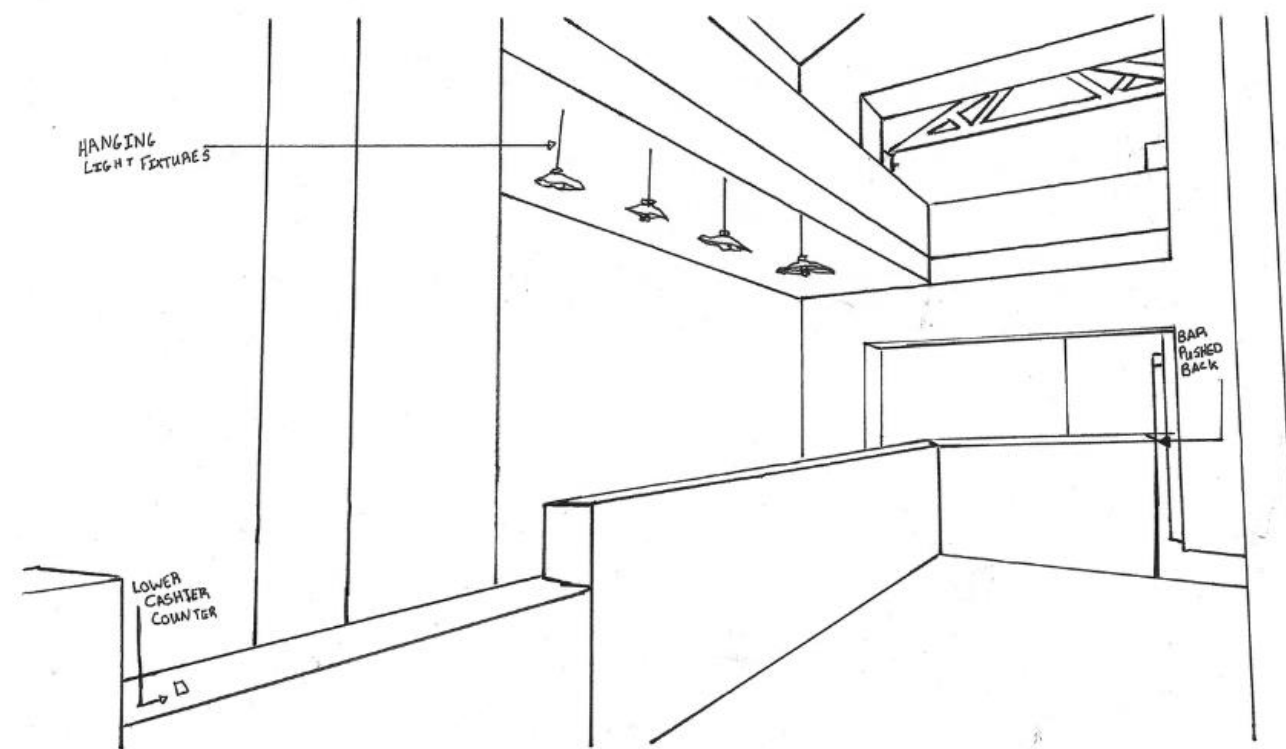
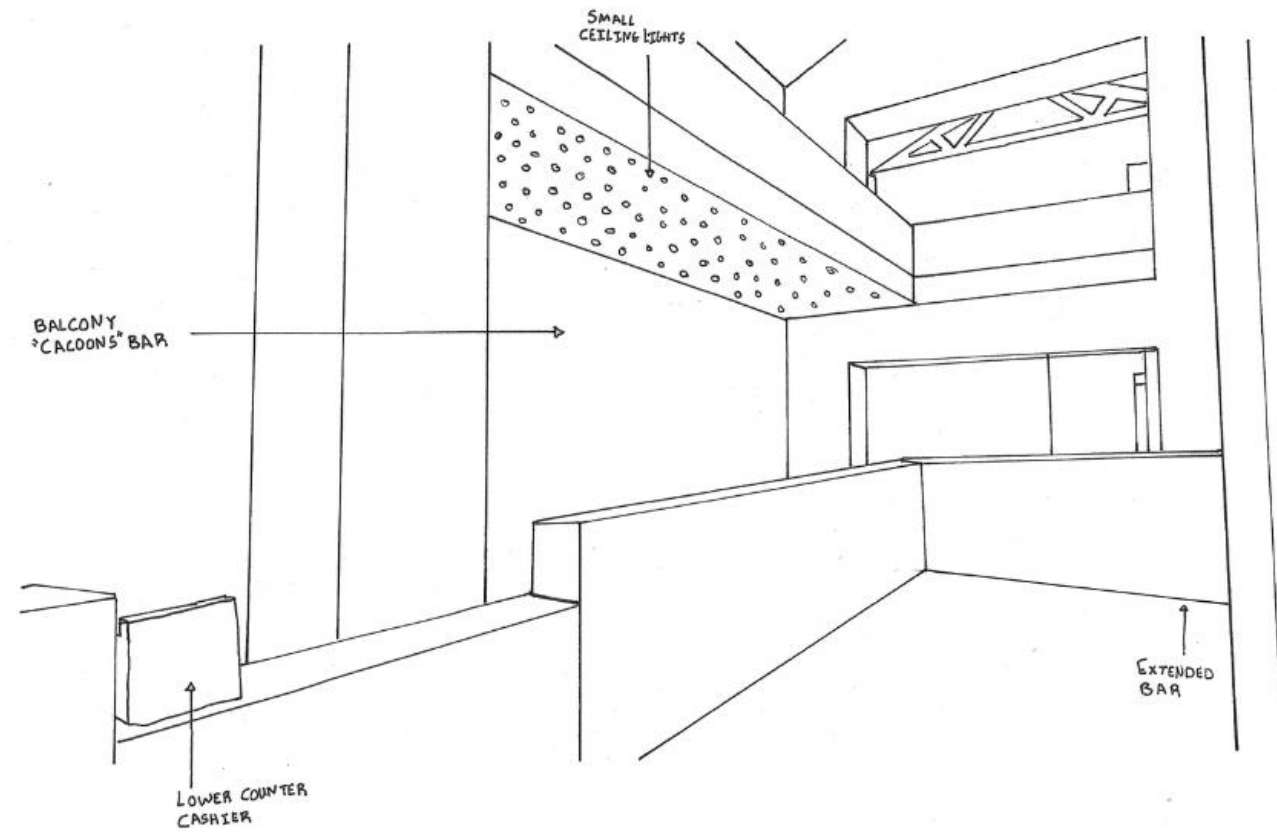
Problem Resolution Sketches



PAIGE POTTLE
IDSN 2102 F20

ASSIGNMENT 3

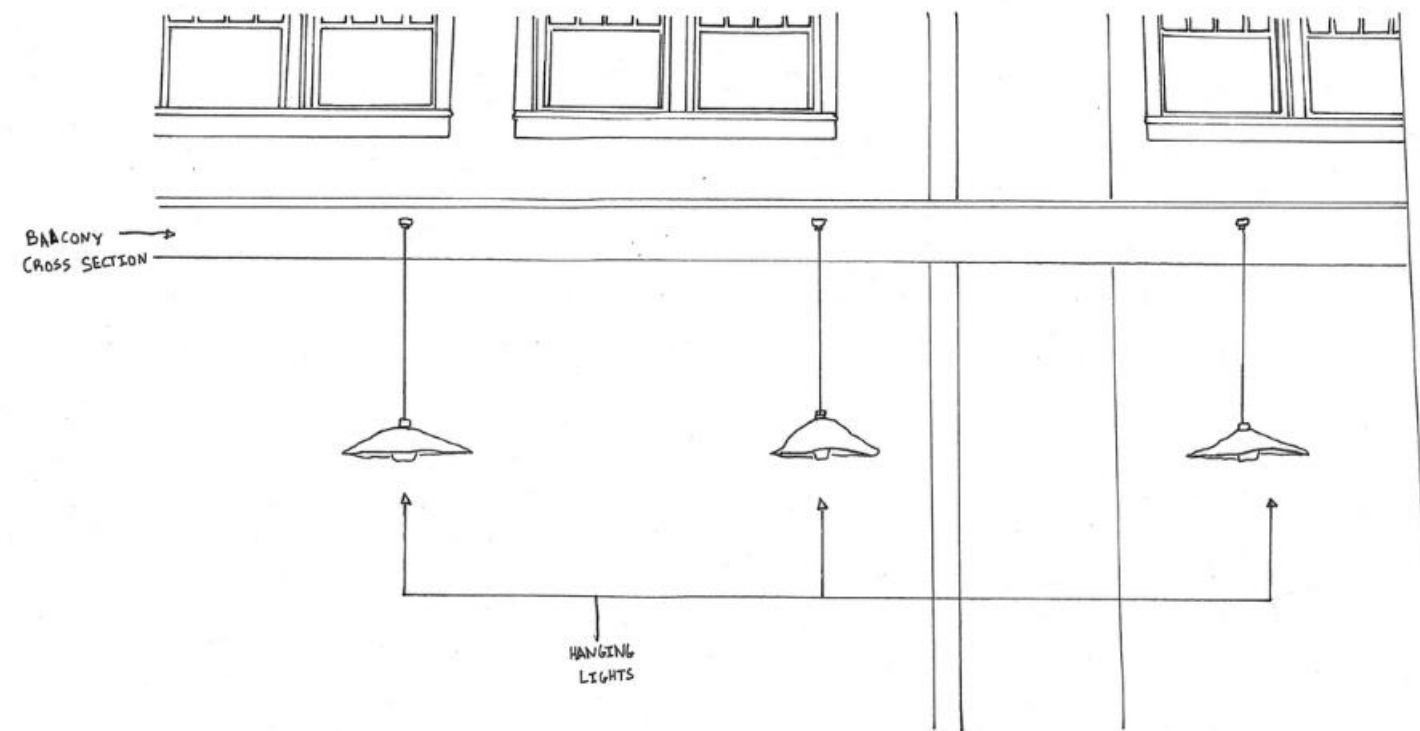
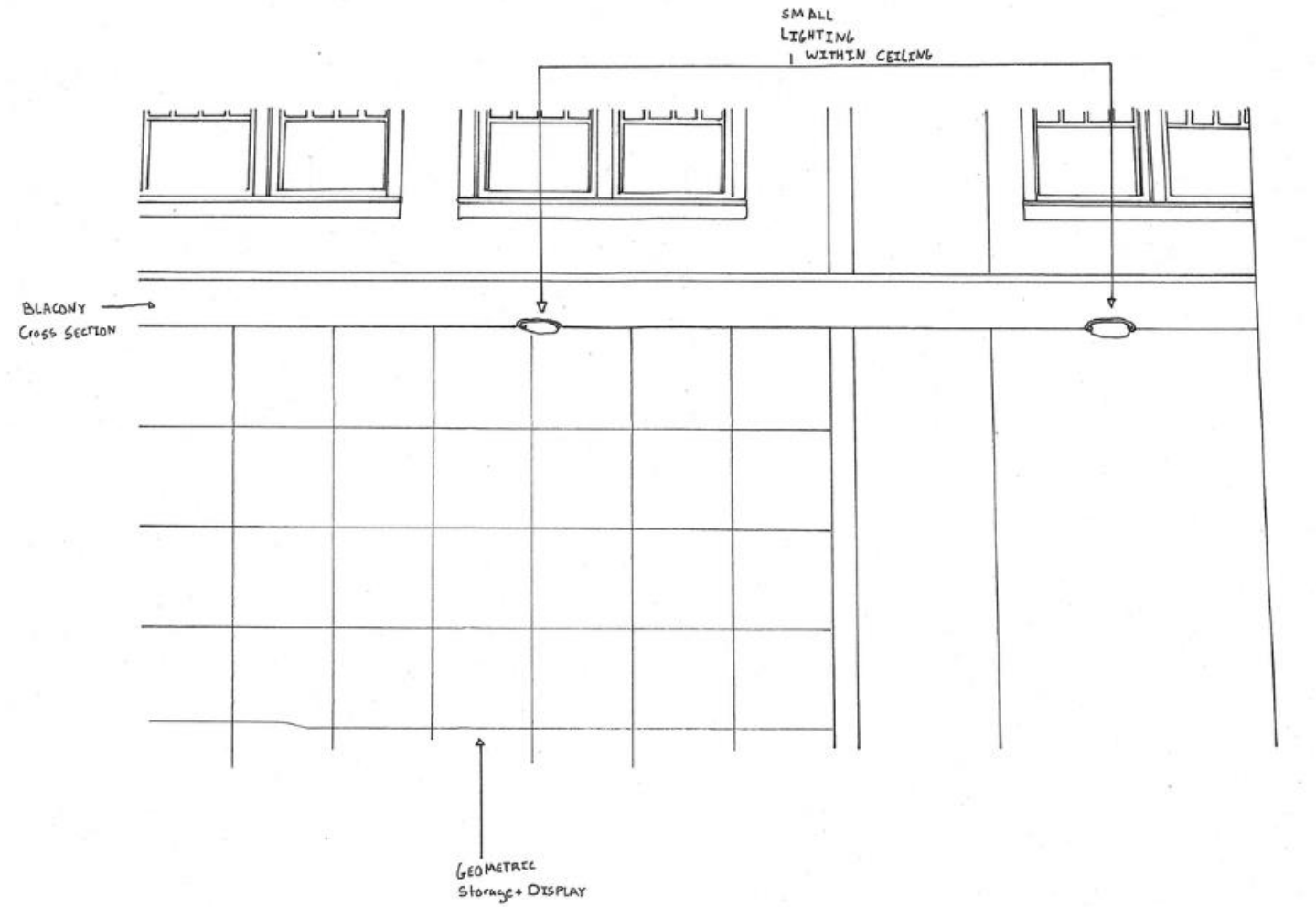
Problem Resolution Sketches



PAIGE POTTLE
IDSN 2102 F20

ASSIGNMENT 3

Problem Resolution Sketches



ASSIGNMENT 3

Problem Resolution Sketches

PAIGE POTTLE
IDSN 2102 F20

