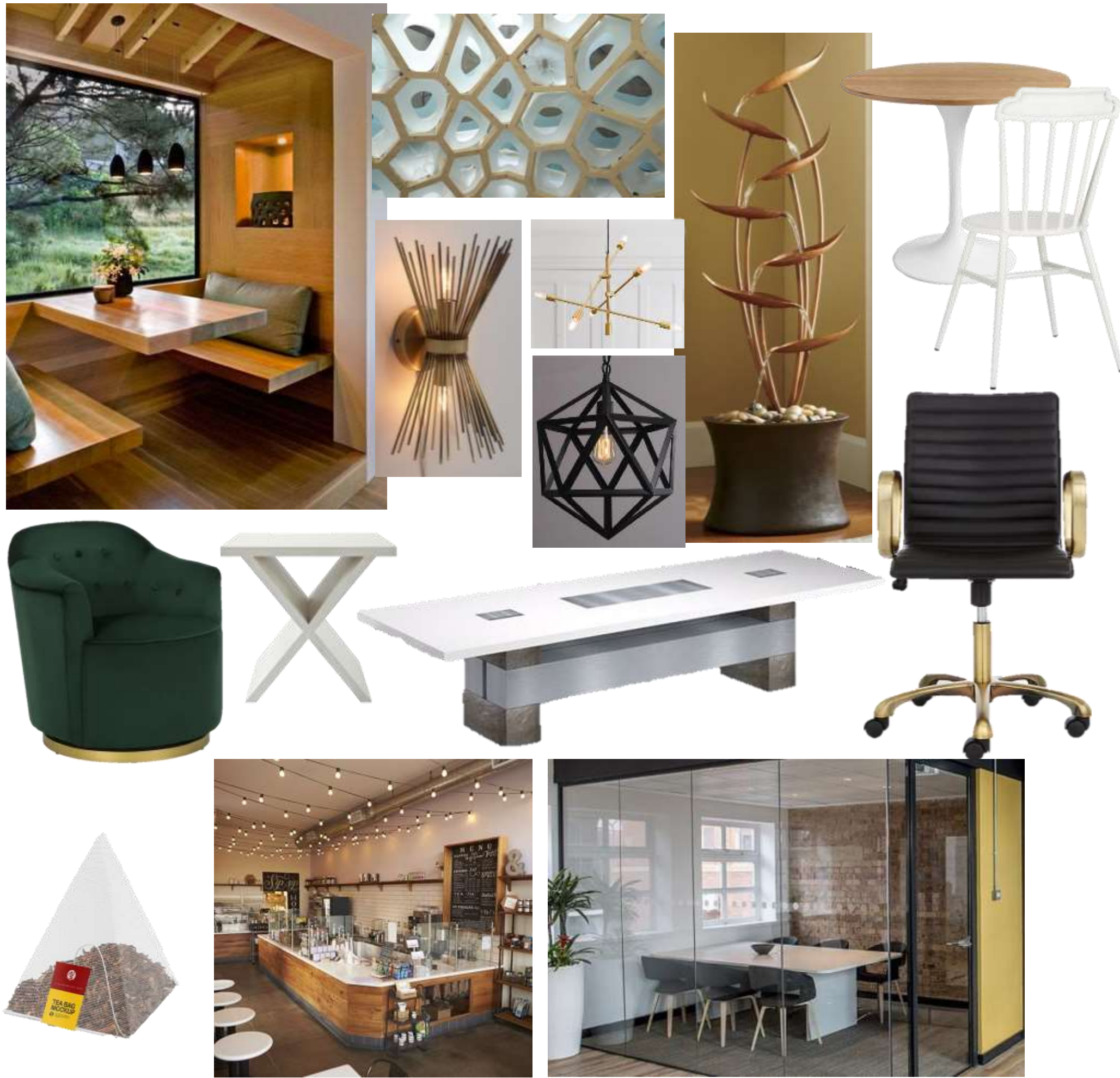




**PORTFOLIO 1**  
**IDSN 2102**  
**F20**  
**MADIGAN STOCKWELL**



Portfolio 1  
 Assignment 1  
 Research & Inspiration Images



Topic 1: Millennium Campus

- Haynie Building: built 1914
- 22.3 acres, consisting of American tobacco Co. Storage Warehouse, Richard Hughes Warehouse, and Export Tobacco Leaf Factory (Haynie Building)
- Goal: transform the space into a “smaller scale version of the American Tobacco Warehouse District in Durham, North Carolina

Topic 2: The Third Place

- A social surrounding separate from home and the workplace
  - Examples: coffee houses, chocolate houses, bars and pubs, tearooms, and smoking clubs
- Goal: building communities

Greenville Teahouse

- Place that serves teas, as well as, other light refreshments
- Consists of: study nooks, bar tops, tables and chairs, conference/ presentation rooms

IDSN 2102  
 F20  
 Madigan Stockwell



### User Profile

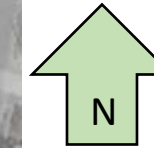
- Located near ECU Biomedical Technology Building
  - Primarily used by students, faculty, and medical professionals
  - Used for studying, presentations, or meetings
- Close to downtown
- Off the Greenville bypass
  - Easy access for tourists
- Provides a separate place to work
- Provides a unique social setting





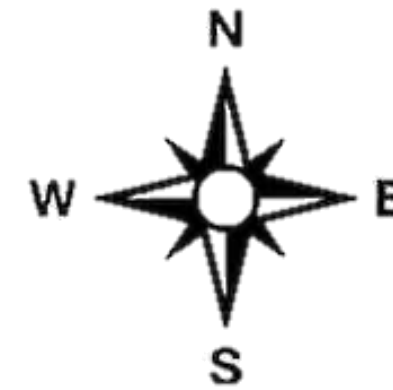
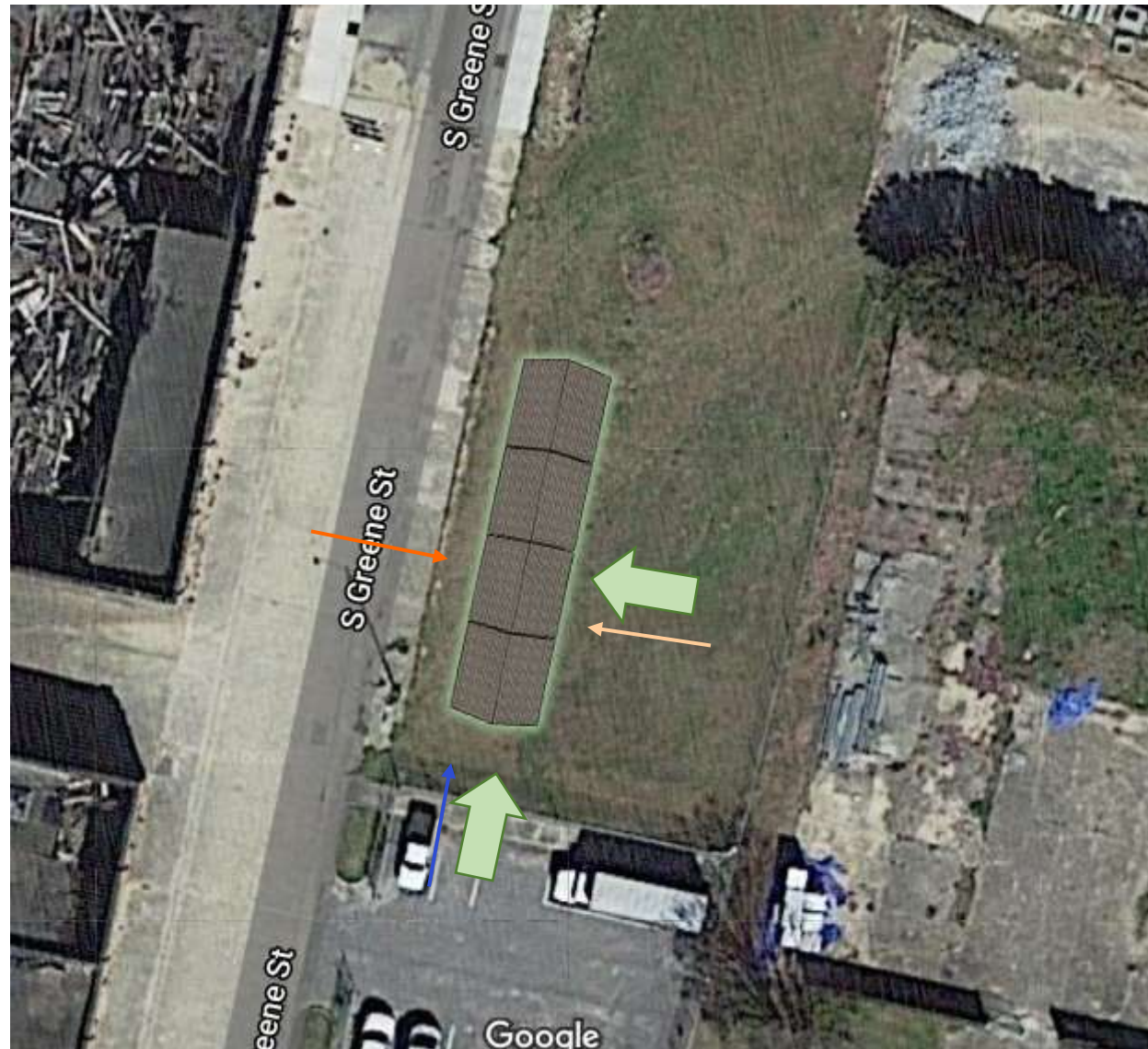
Portfolio 1  
Assignment 2  
Site Profile

- Located: 301 W 10<sup>th</sup> St.
- Extends 3 Blocks between Pitt and Greene St.



IDSN 2102  
F20  
Madigan Stockwell





Sunlight Directions

- North: no direct light
- South: continuous morning/ evening light ← blue arrow
- East: morning light ← orange arrow
- West: evening light ← orange arrow

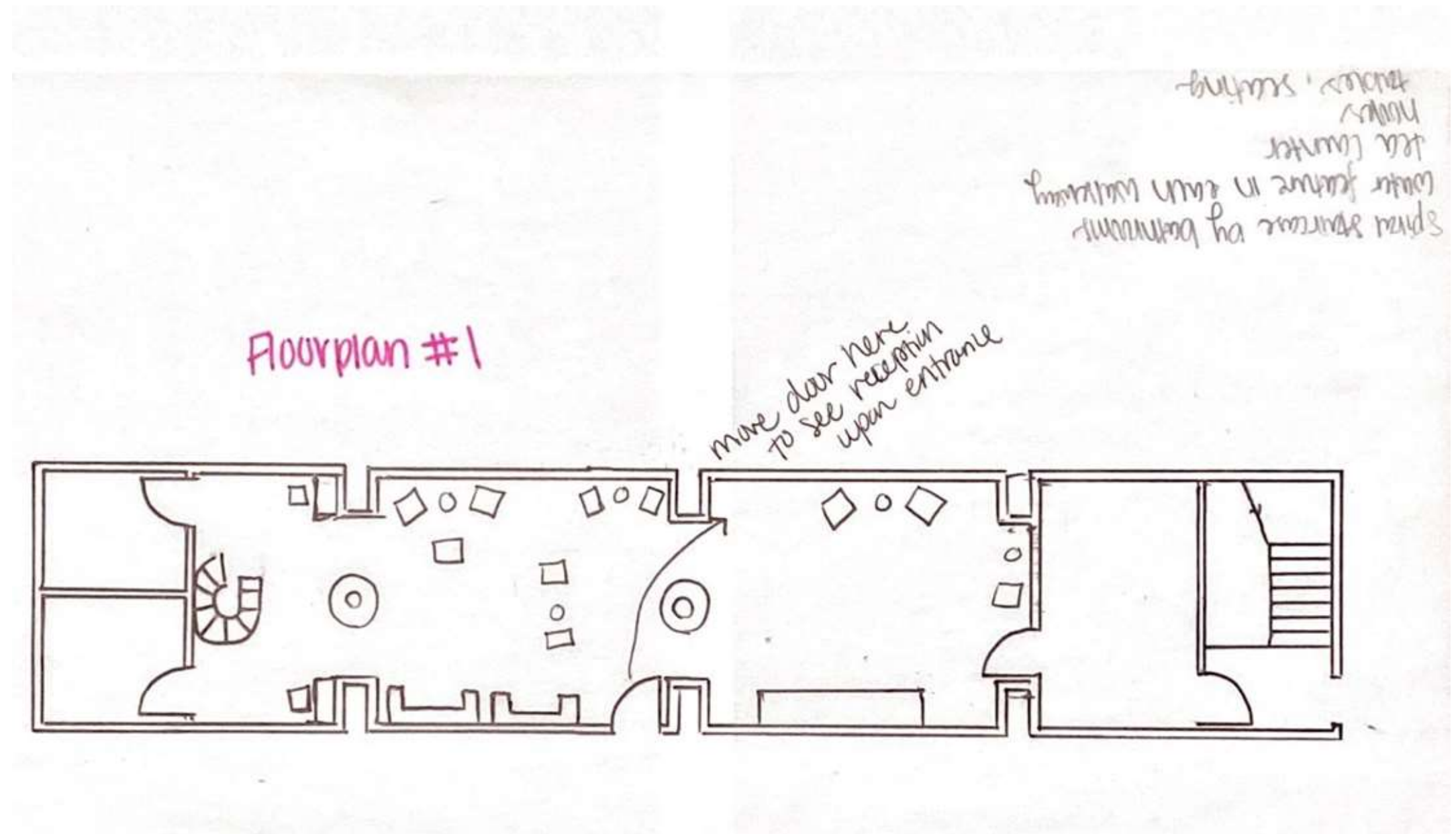
Entrances ← green arrow

Design Problem Statement

- The small size makes it difficult to create a two story building with enough natural light.
- With two stories, it is harder to encourage customers to go upstairs.



Portfolio 1  
Assignment 3  
Sketches

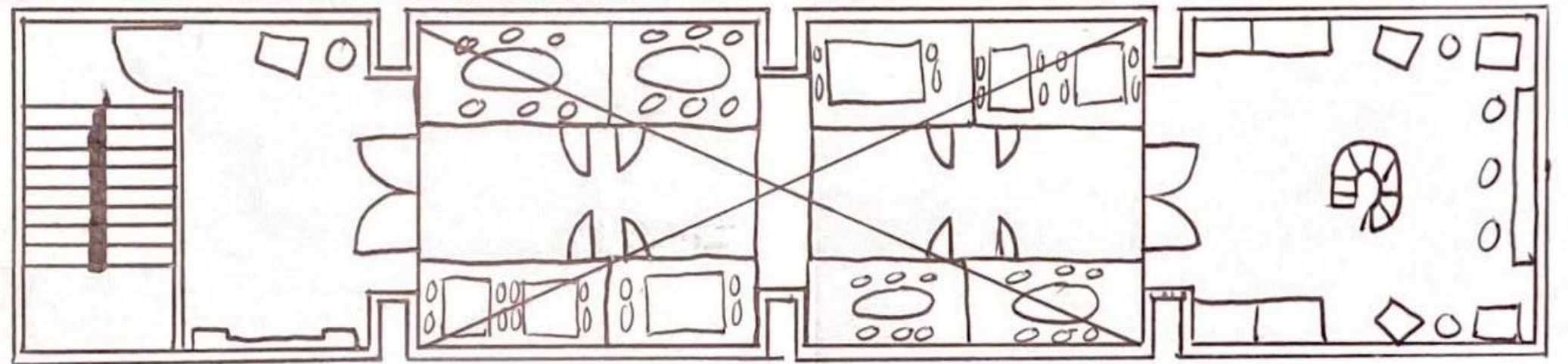


IDSN 2101  
F20  
Madigan Stockwell



Portfolio 1  
Assignment 3  
Sketches

Floorplan #1



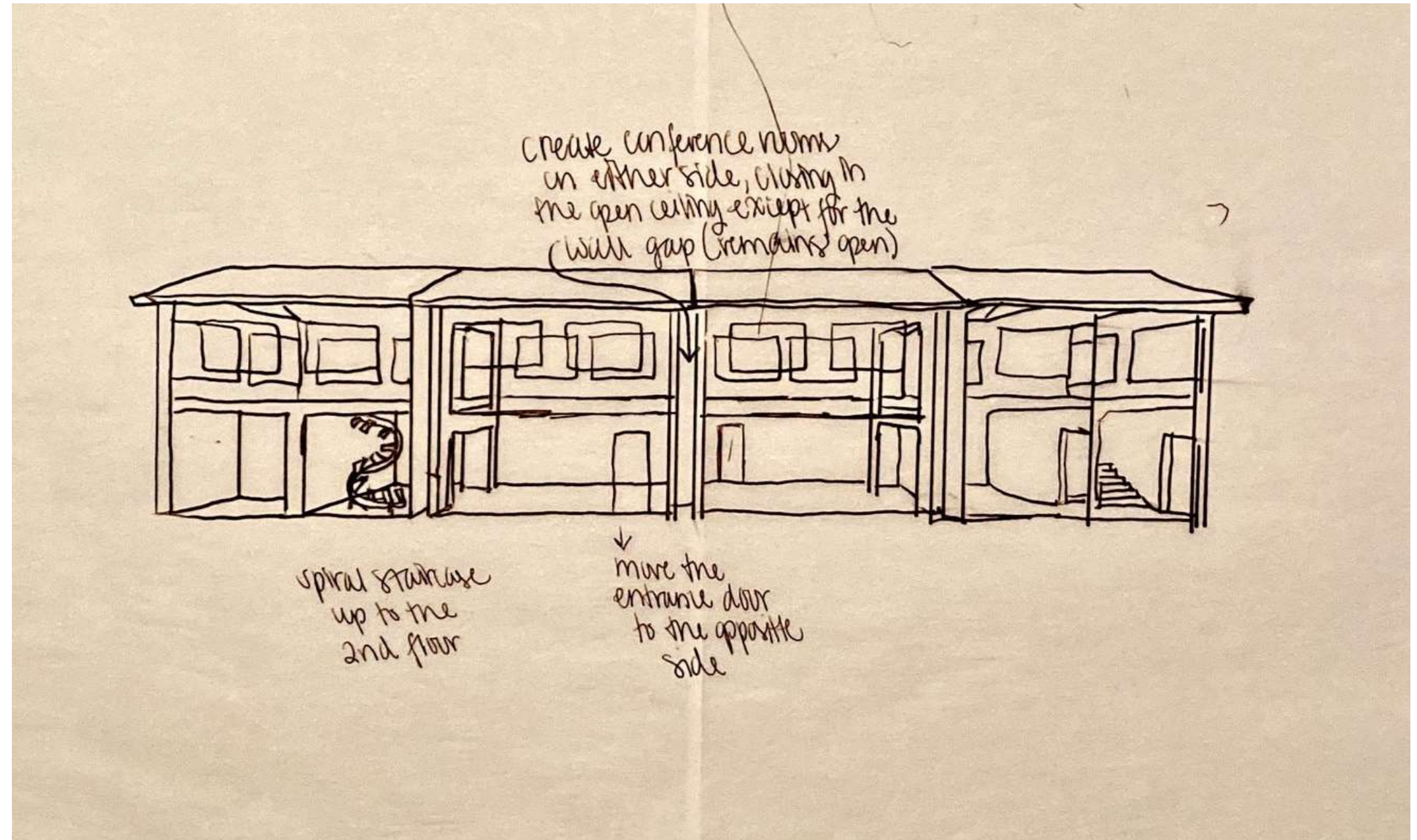
IDSN 2101

F20

Madigan Stockwell

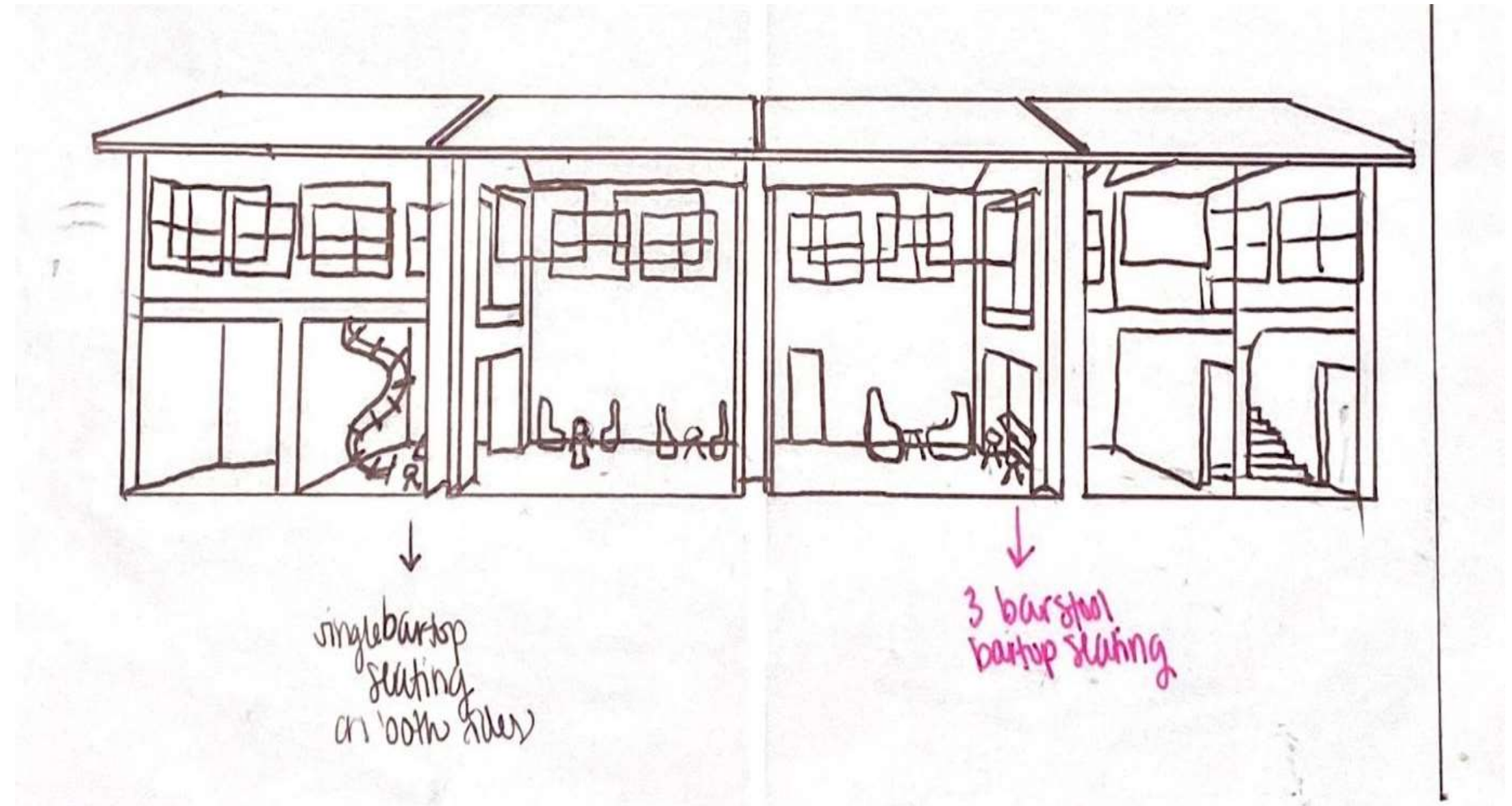


Portfolio 1  
Assignment 3  
Sketches



IDSN 2101  
F20  
Madigan Stockwell

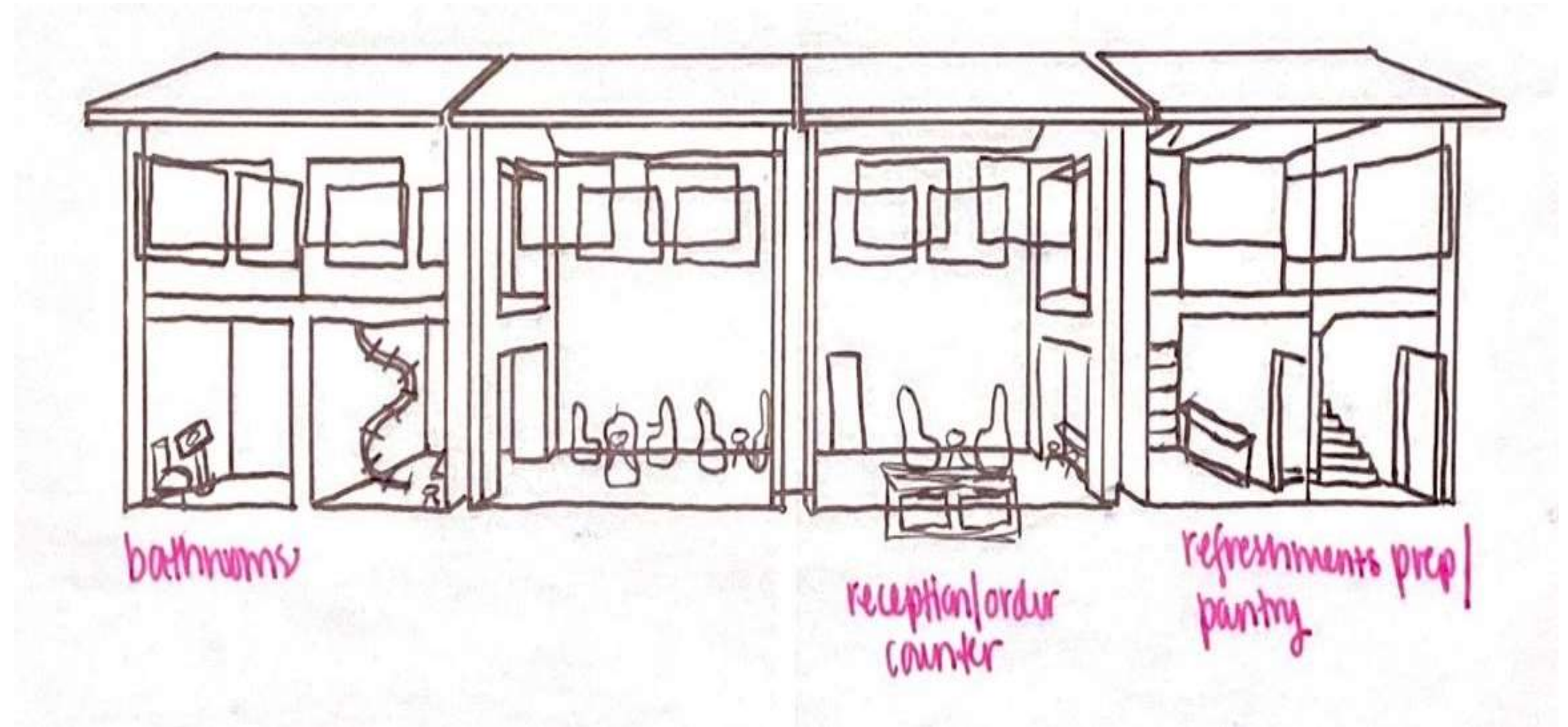
Portfolio 1  
Assignment 3  
Sketches



IDSN 2101  
F20  
Madigan Stockwell



Portfolio 1  
Assignment 3  
Sketches

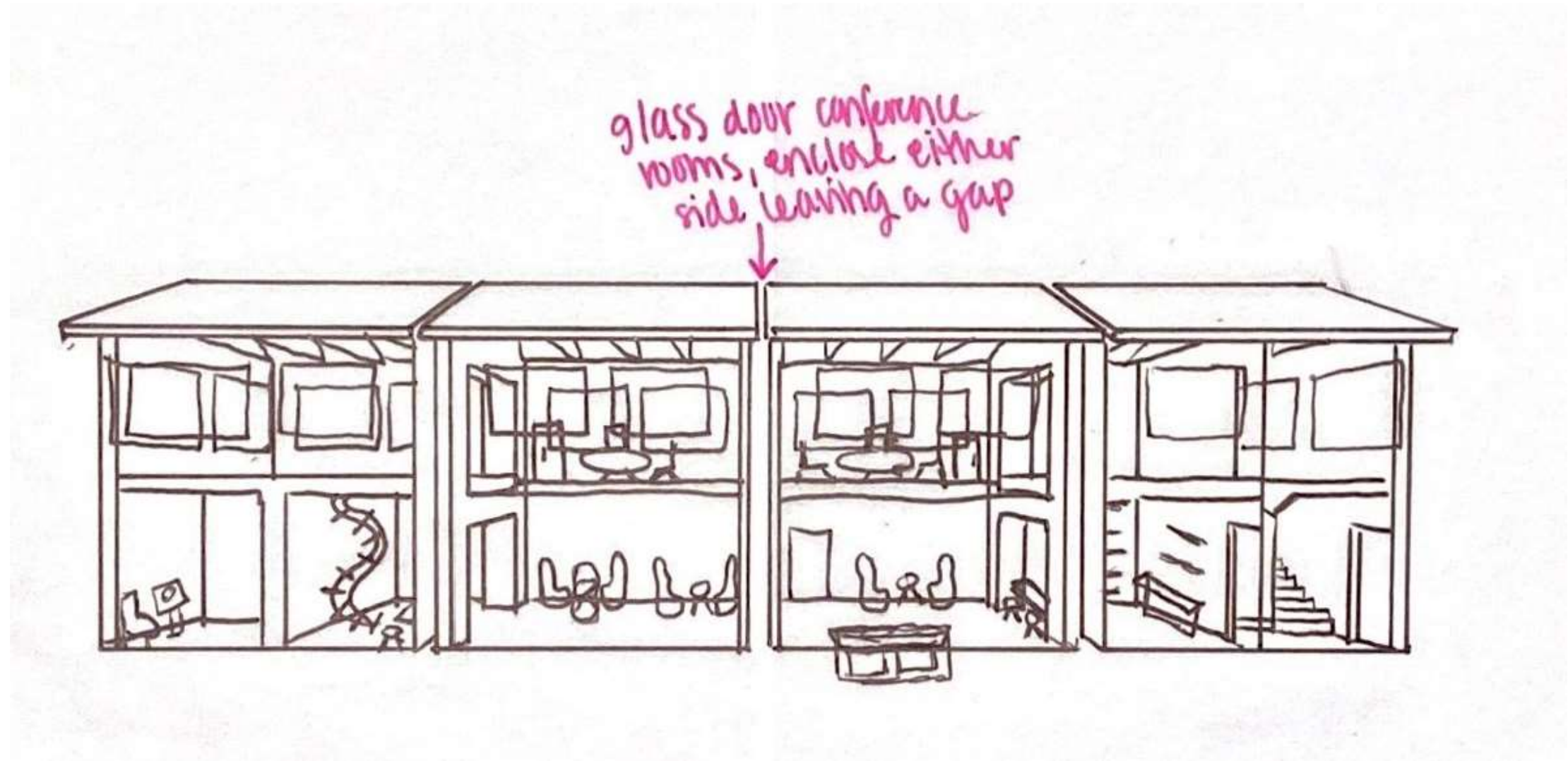


IDSN 2101

F20

Madigan Stockwell

Portfolio 1  
Assignment 3  
Sketches



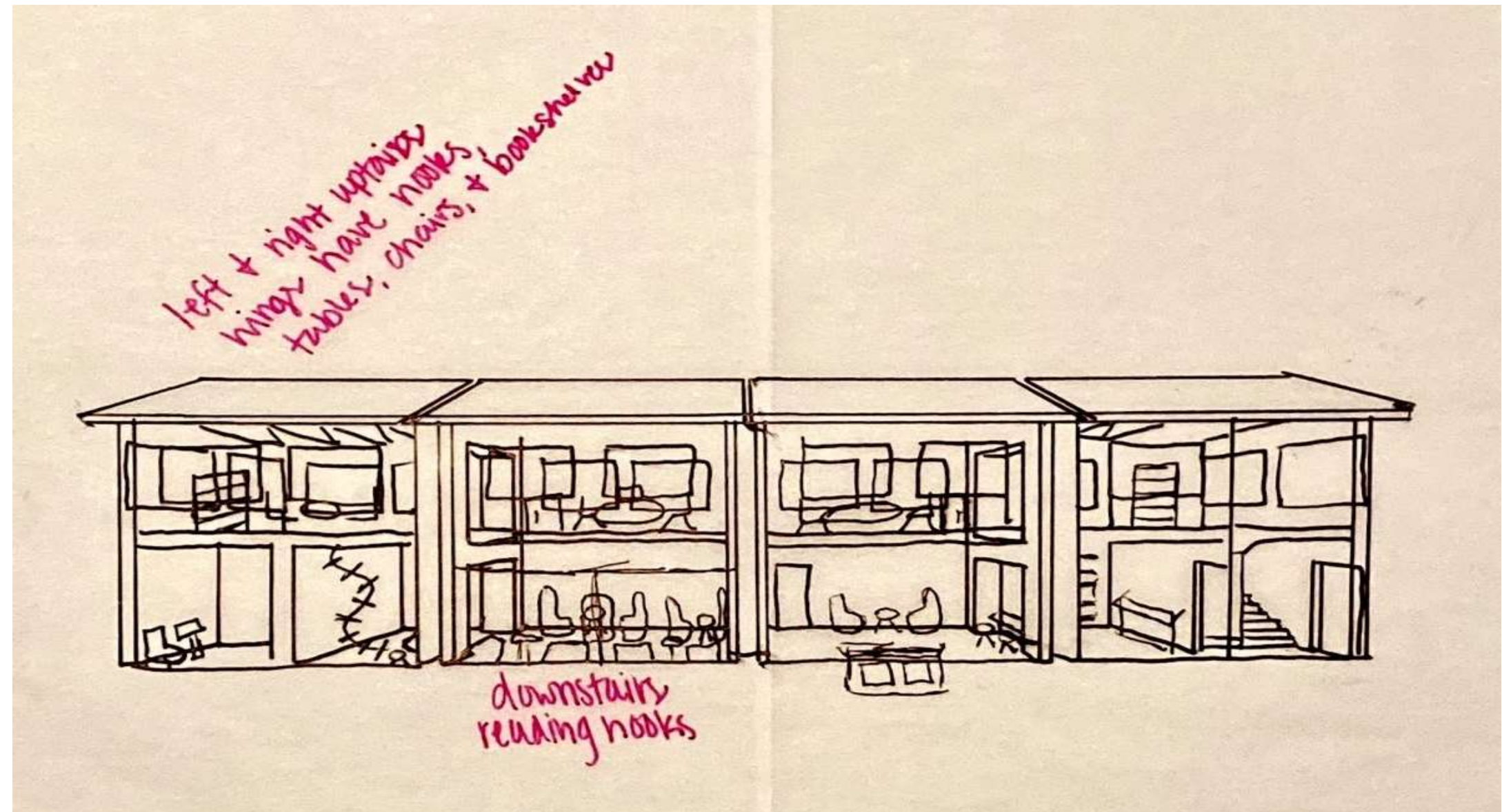
IDSN 2101

F20

Madigan Stockwell

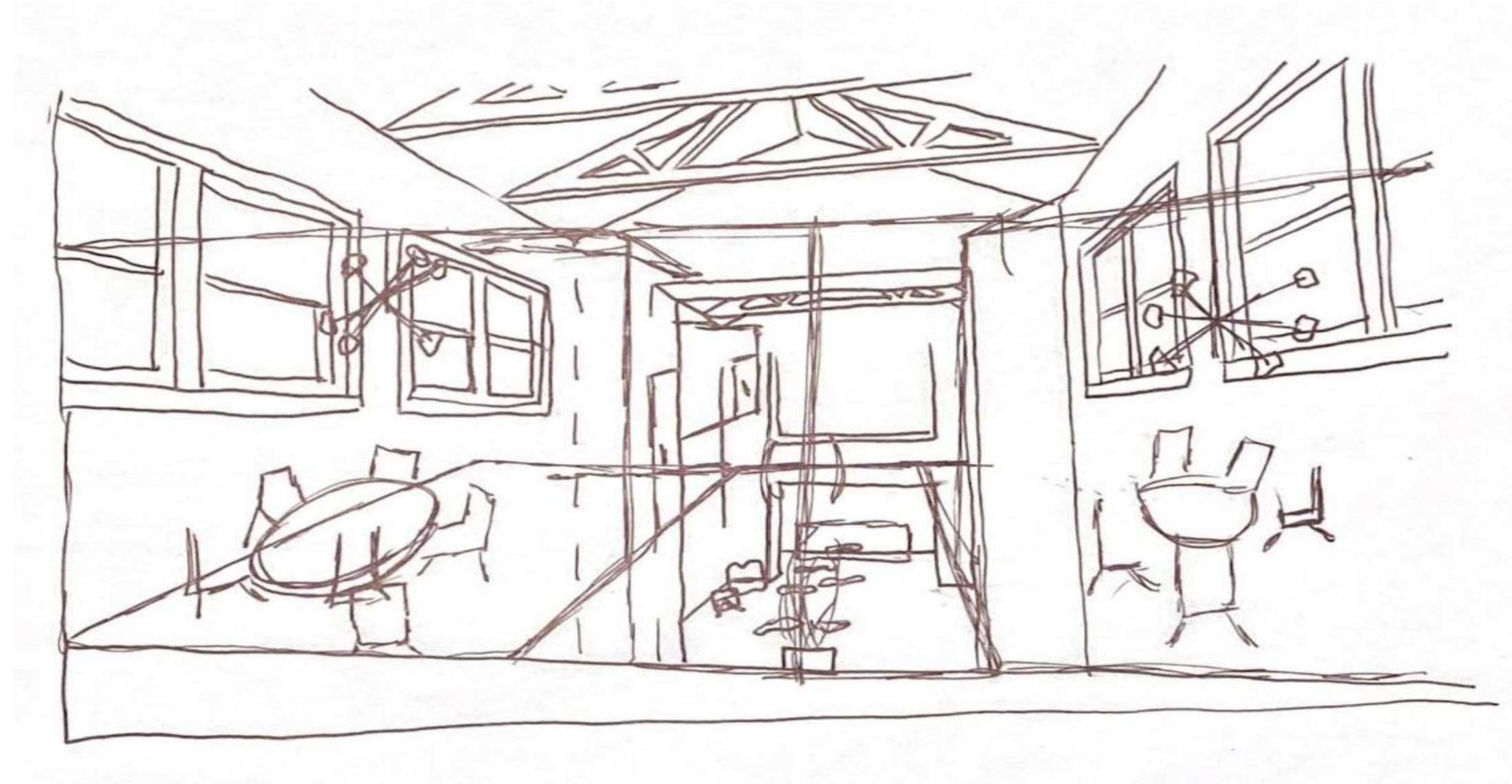


Portfolio 1  
Assignment 3  
Sketches



IDSN 2101  
F20  
Madigan Stockwell

Portfolio 1  
Assignment 3  
Sketches



IDSN 2101  
F20  
Madigan Stockwell



Portfolio 1  
Assignment 3  
Sketches

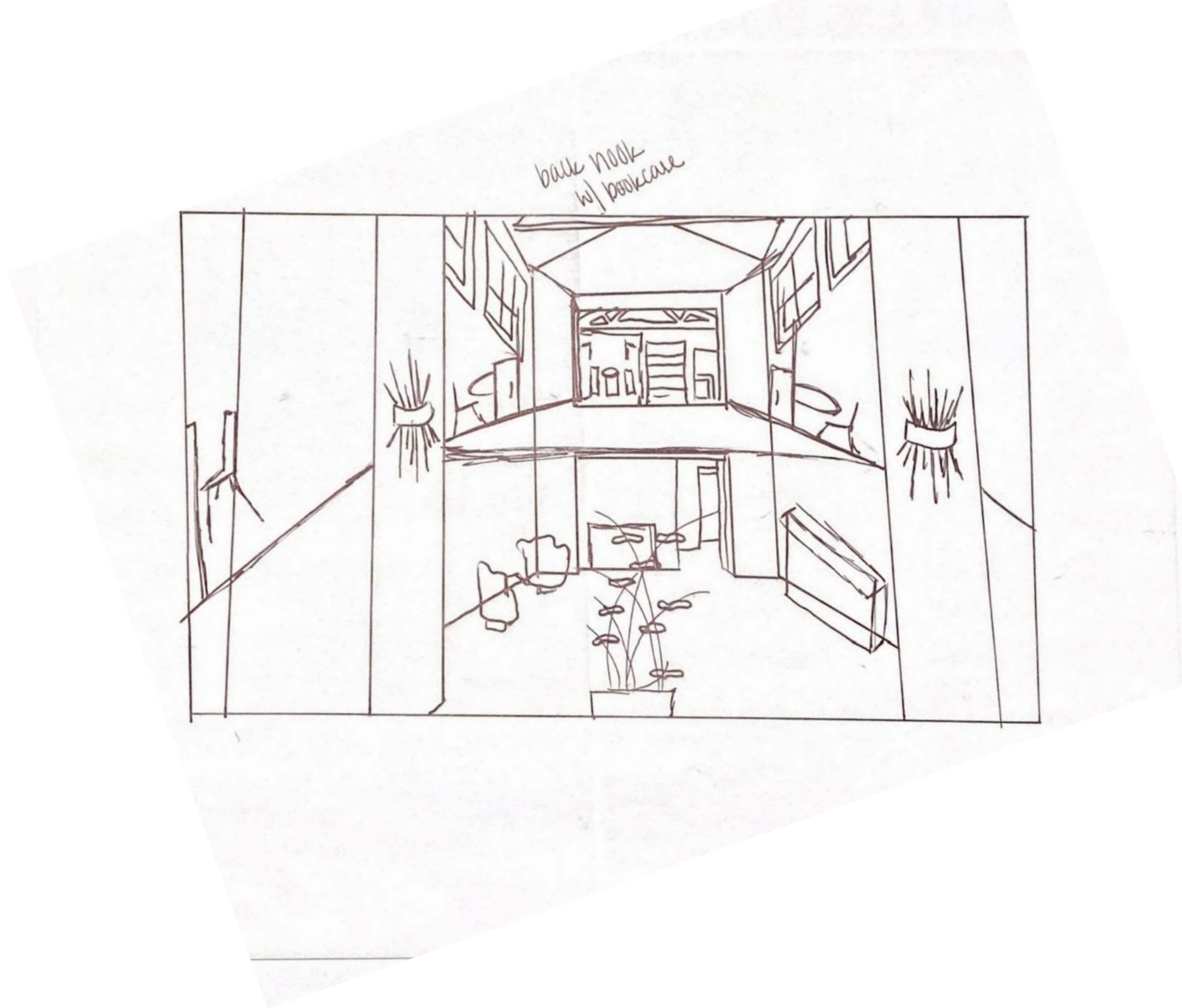


IDSN 2101

F20

Madigan Stockwell

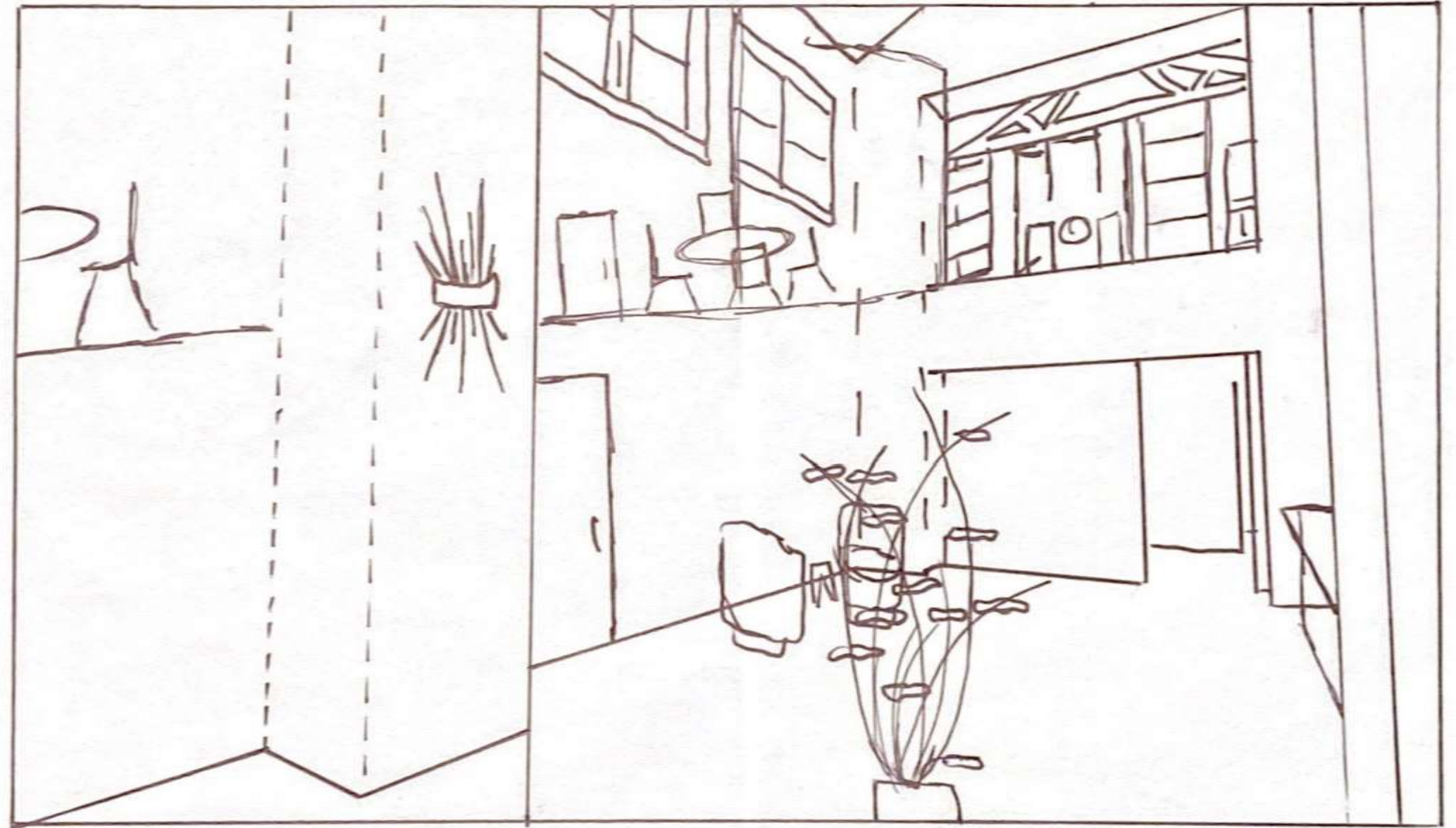
Portfolio 1  
Assignment 3  
Sketches



IDSN 2101  
F20  
Madigan Stockwell

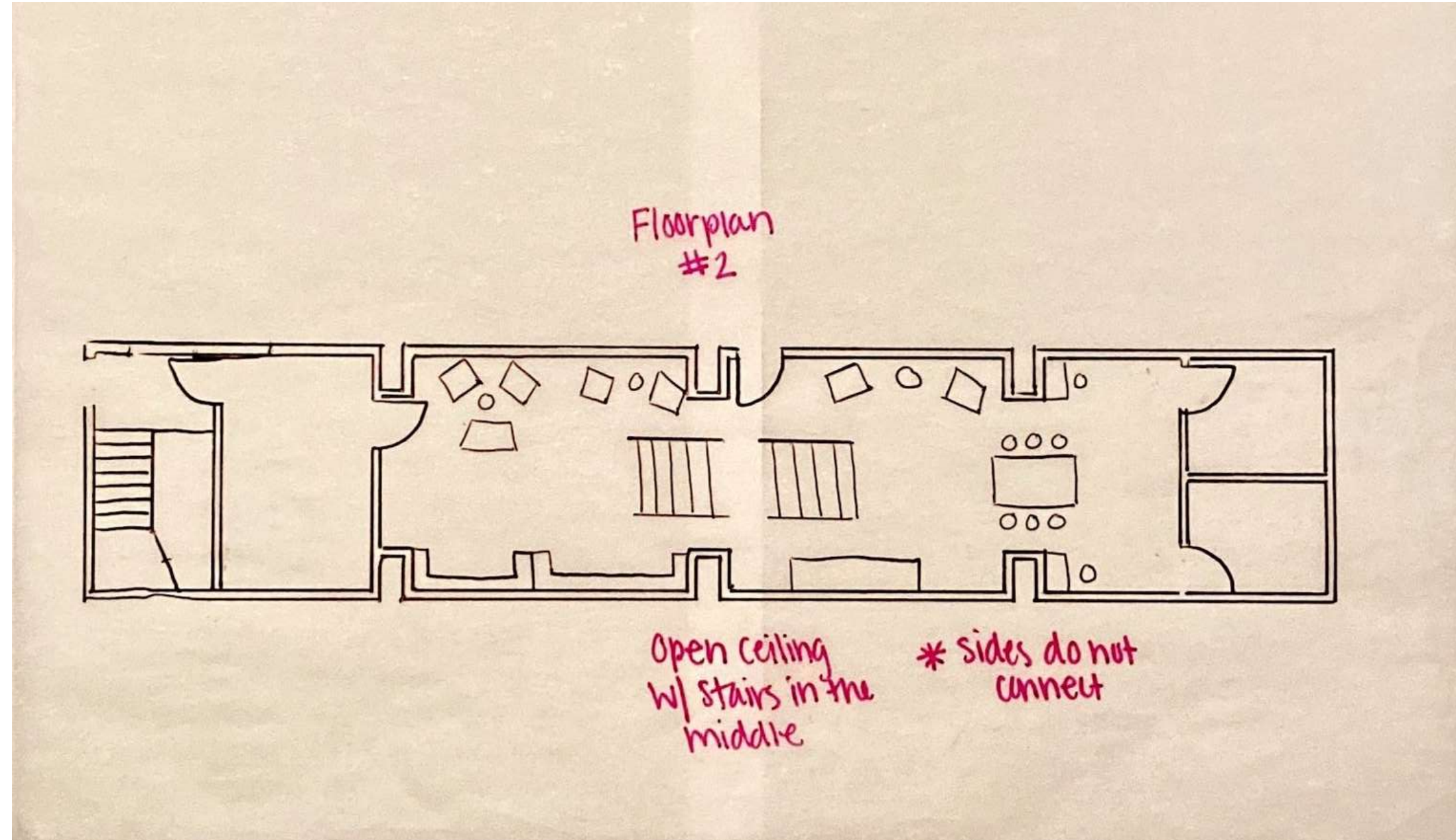


Portfolio 1  
Assignment 3  
Sketches



IDSN 2101  
F20  
Madigan Stockwell

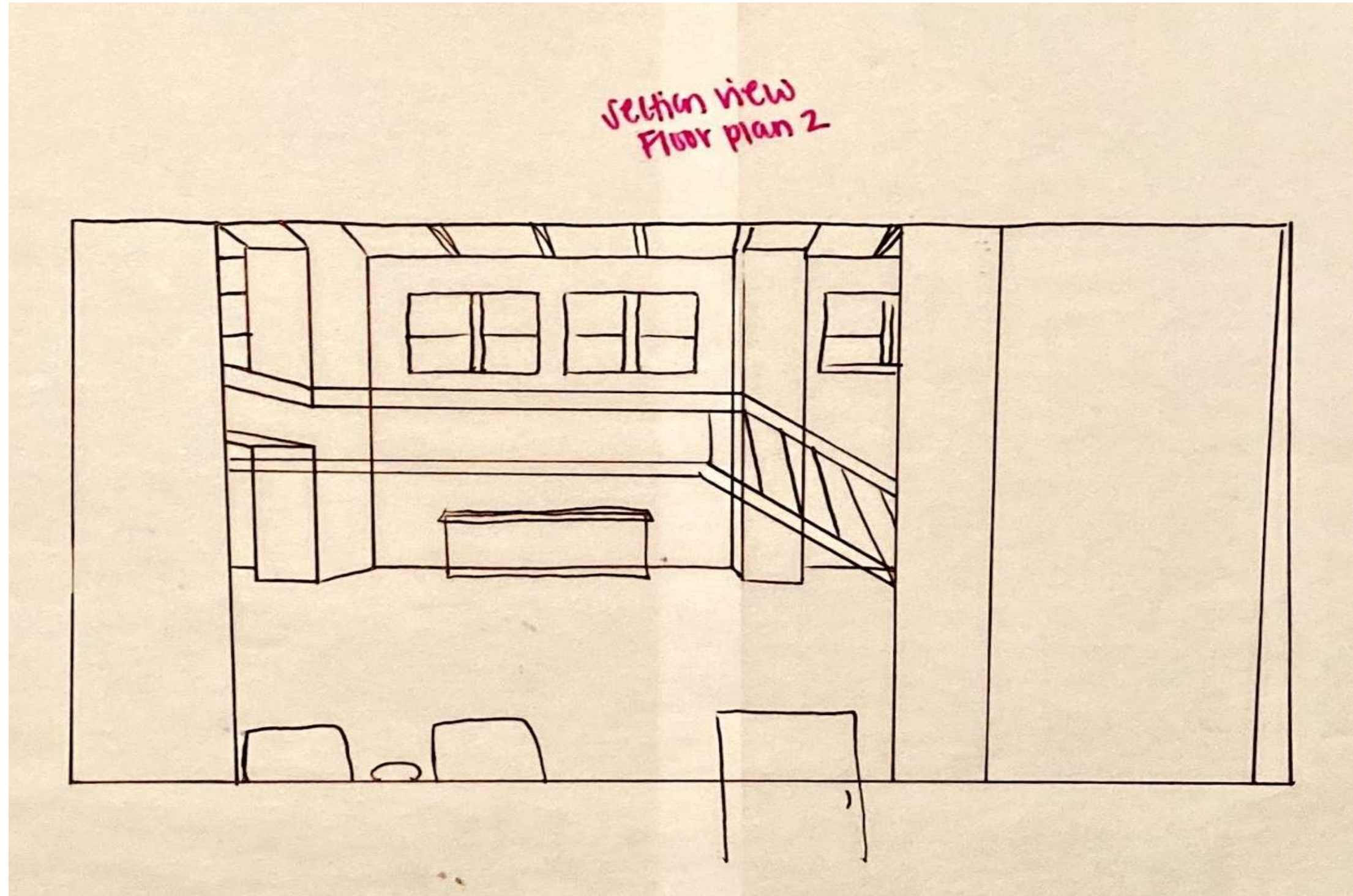
Portfolio 1  
Assignment 3  
Sketches



IDSN 2101  
F20  
Madigan Stockwell

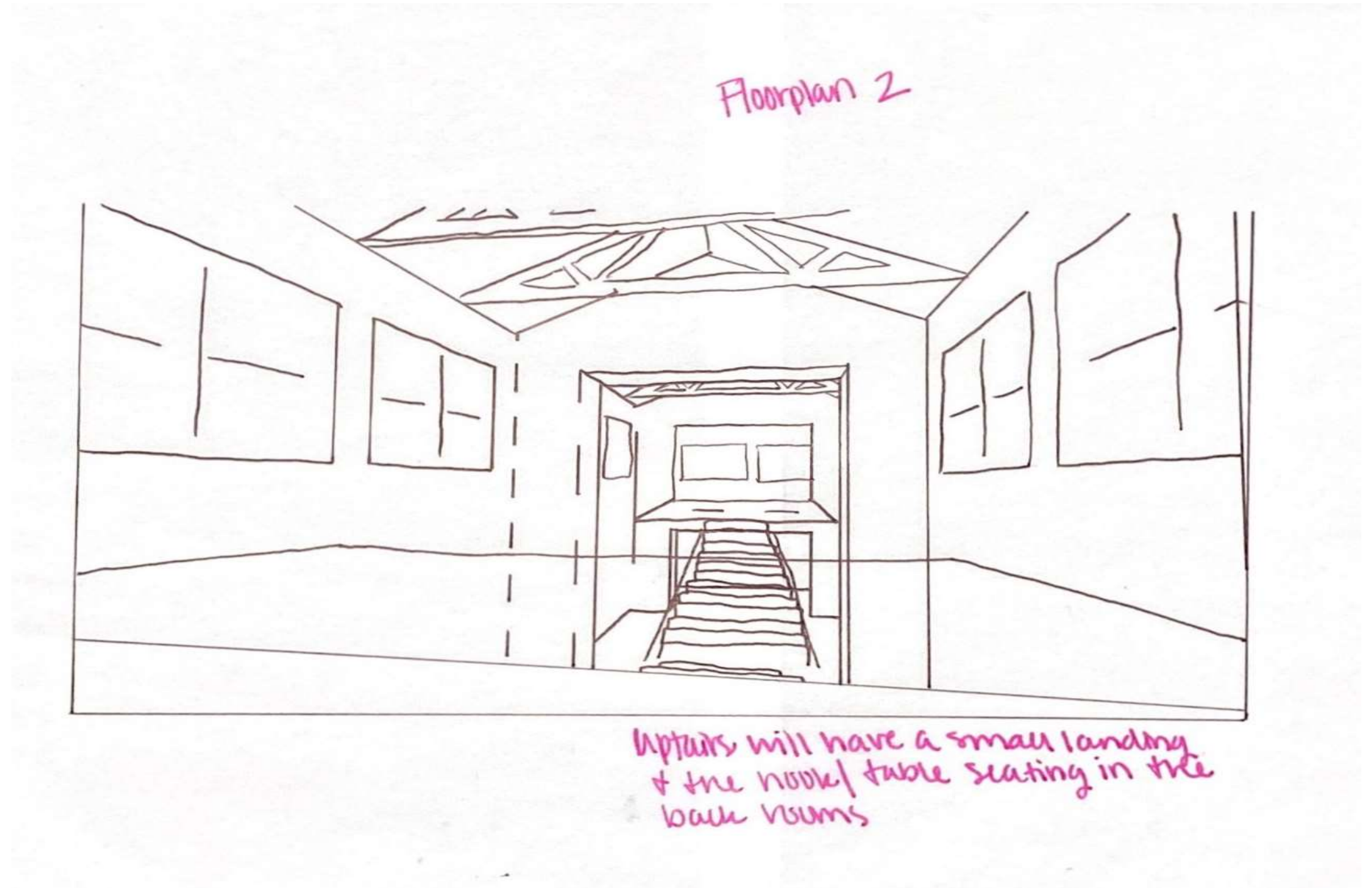


Portfolio 1  
Assignment 3  
Sketches



IDSN 2101  
F20  
Madigan Stockwell

Portfolio 1  
Assignment 3  
Sketches



IDSN 2101  
F20  
Madigan Stockwell

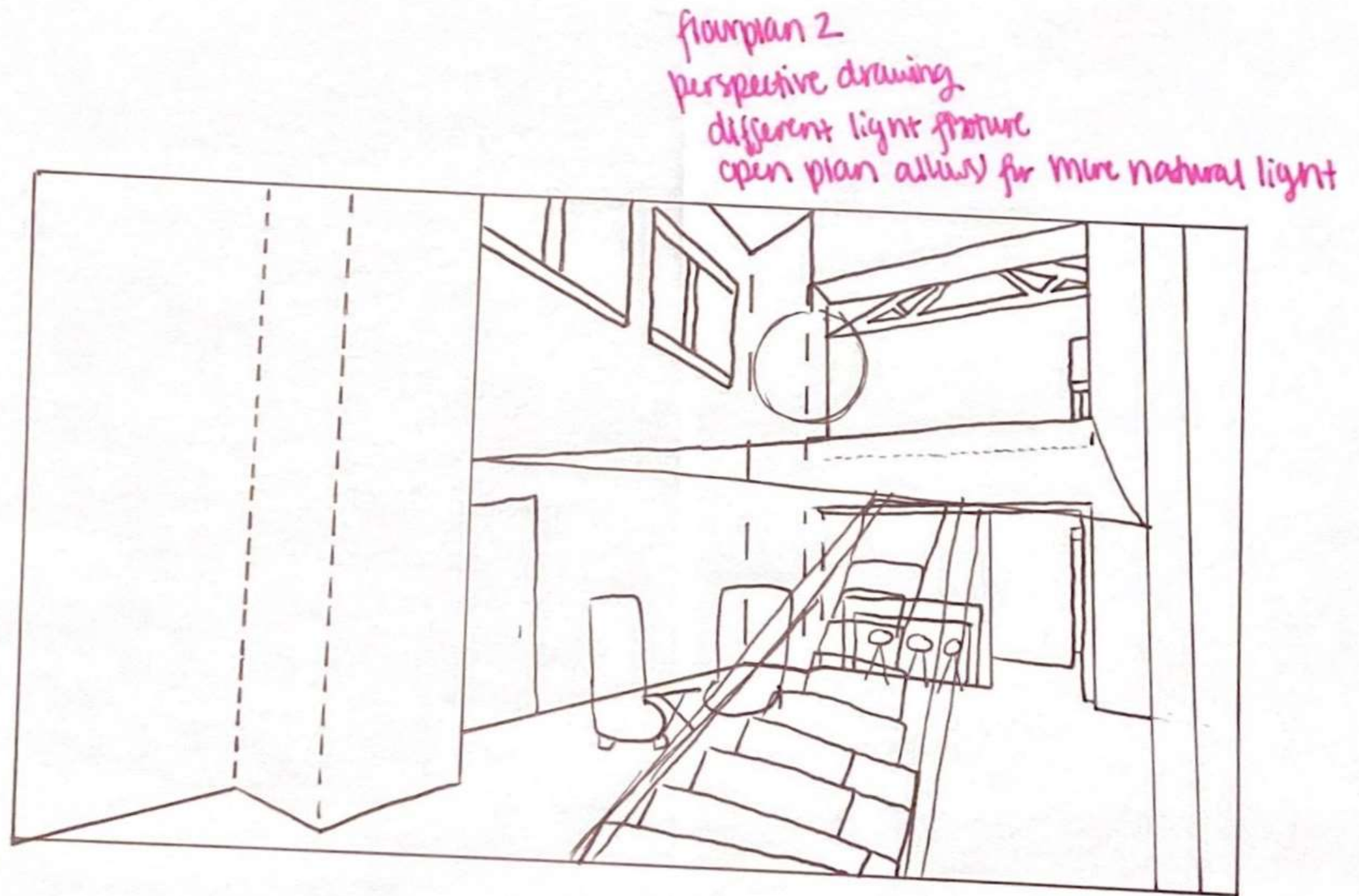


Portfolio 1  
Assignment 3  
Sketches



IDSN 2101  
F20  
Madigan Stockwell

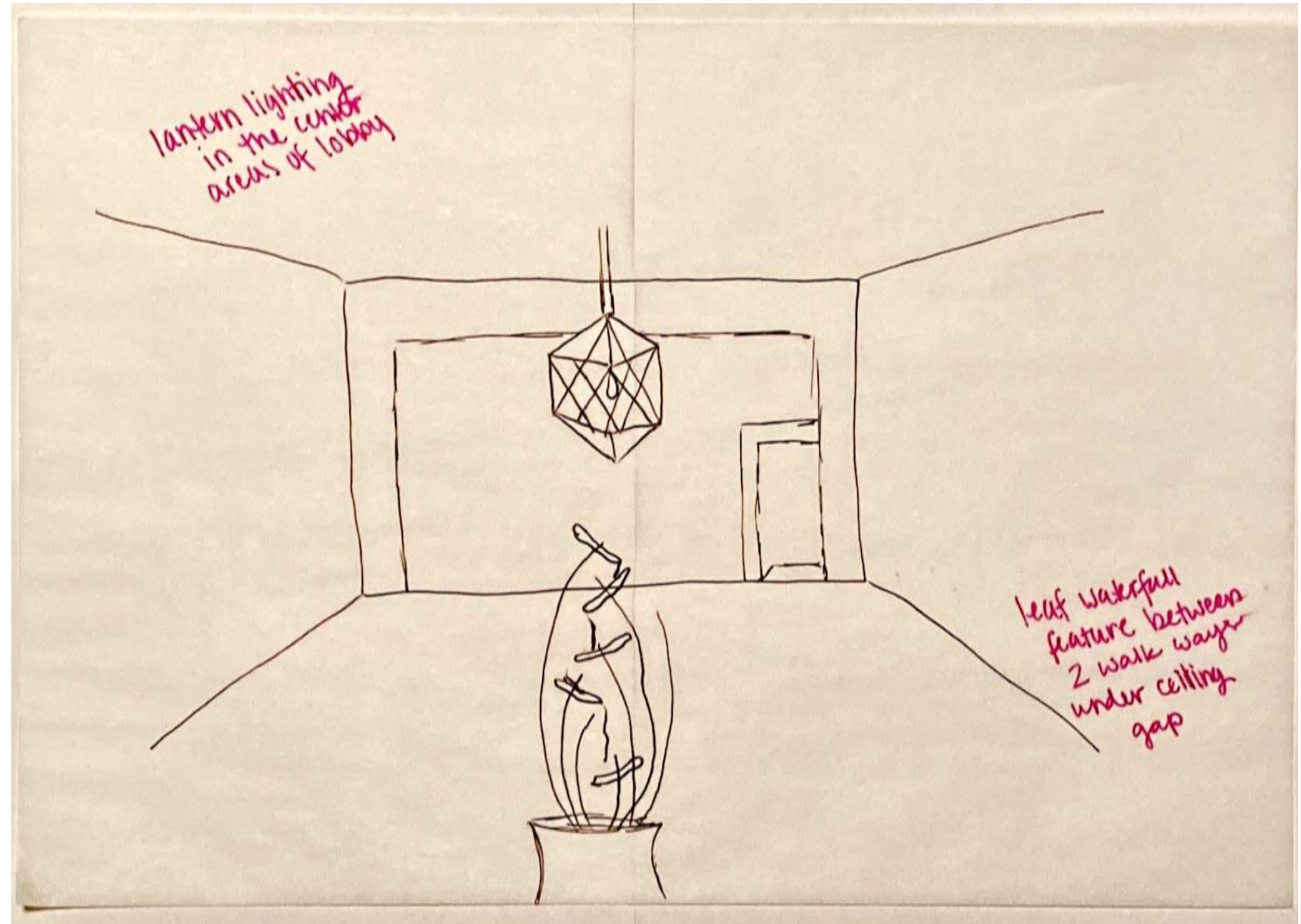
Portfolio 1  
Assignment 3  
Sketches



IDSN 2101  
F20  
Madigan Stockwell



Portfolio 1  
Assignment 3  
Sketches

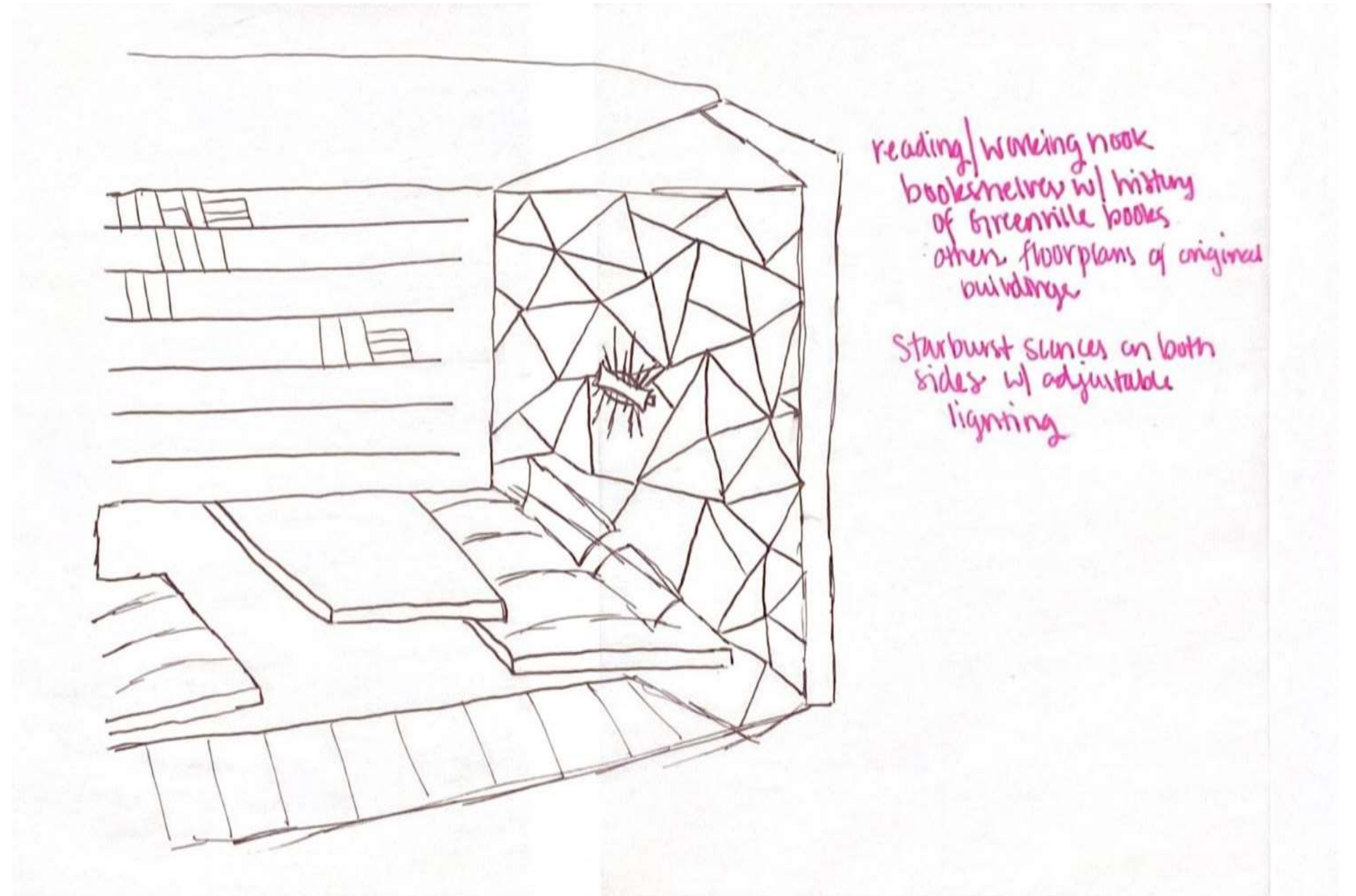


IDSN 2101

F20

Madigan Stockwell

Portfolio 1  
Assignment 3  
Sketches



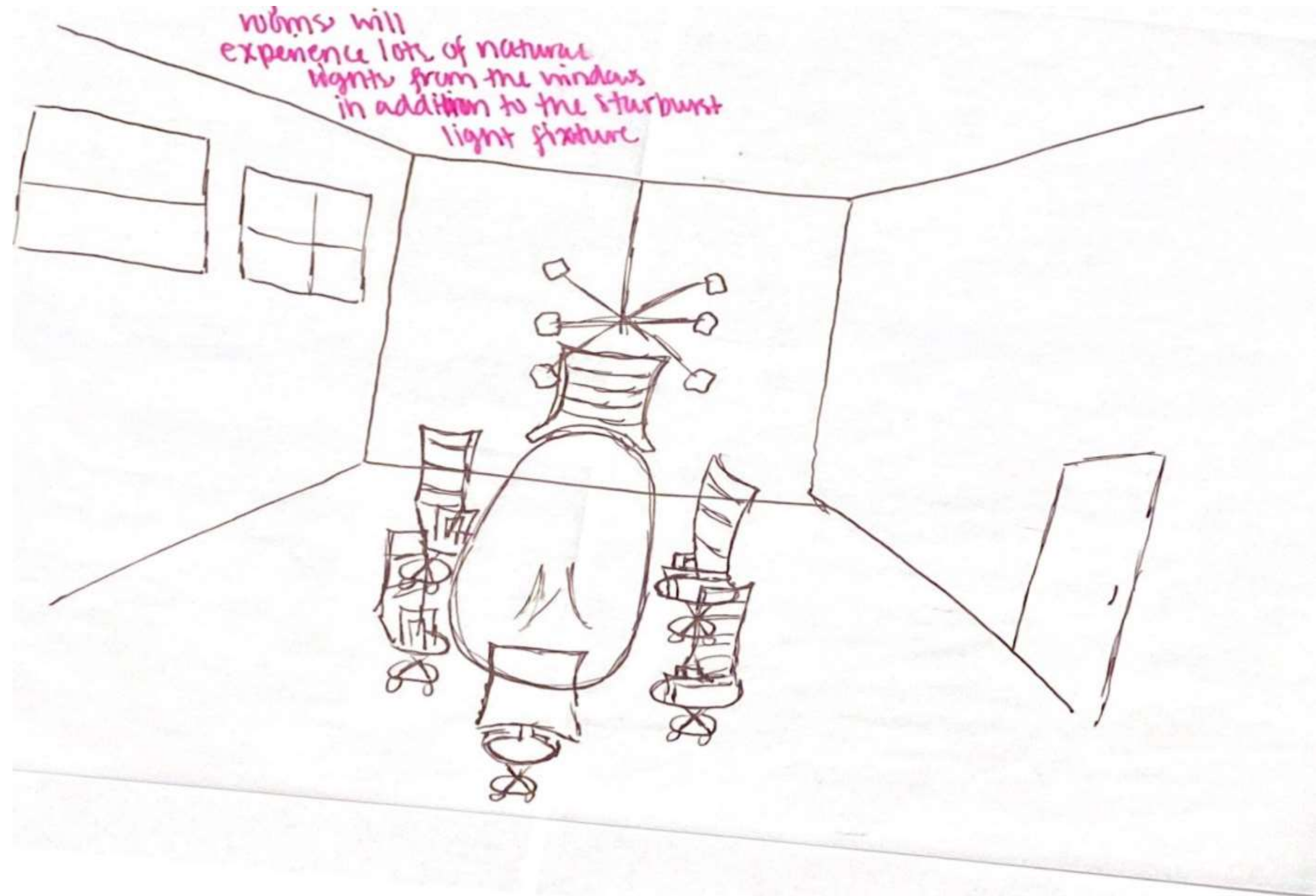
IDSN 2101

F20

Madigan Stockwell



Portfolio 1  
Assignment 3  
Sketches



IDSN 2101  
F20  
Madigan Stockwell