

EAST CAROLINA UNIVERSITY'S
MILLENNIAL CAMPUS

HALEY THIGPEN
IDSN 2102 F20

Flue-Cured Tobacco Barns

- Flue cured refers to the fire used to cure tobacco → heat from the barn and heat from the fire rise and cure tobacco = flue cured barns are made from wood
 - Most are kiln dry = wood can become indestructible
- 4 major local warehouse district areas, between the early 1900-mid 1900s with the purpose to sell tobacco in markets = Kinston, Wilson, Goldsboro, and Greenville
- Huge economic market
 - Tobacco was the major economic cash crop for NC
- Tobacco barns can be seen in rural eastern NC = most have crumbled from the lack of use
- Families made a living from tobacco = they owned or worked in tobacco barns
 - In the 1900s, 40% of NC made their money from farms and tobacco

3rd Places

- Refers to places where individuals spend time between home (their 'first' place) and work (their 'second' place)
- Individuals build communities, exchange ideas, form relationships, and enjoy one another's company
- Examples include churches, coffee shops, gyms, hair salons, post offices, main streets, bars, beer gardens, bookstores, parks, community centers, gift shops, ice cream shops, etc.

ECU Millennial Campus

- The flue-cured tobacco barn will ensure students and professors connect with partners, such as education, industry, government, and military to invent and produce new innovations
- The focus of this invention is to attract, train, and retain skilled workers

Topic 2: Program/Problem Statement

User Profile

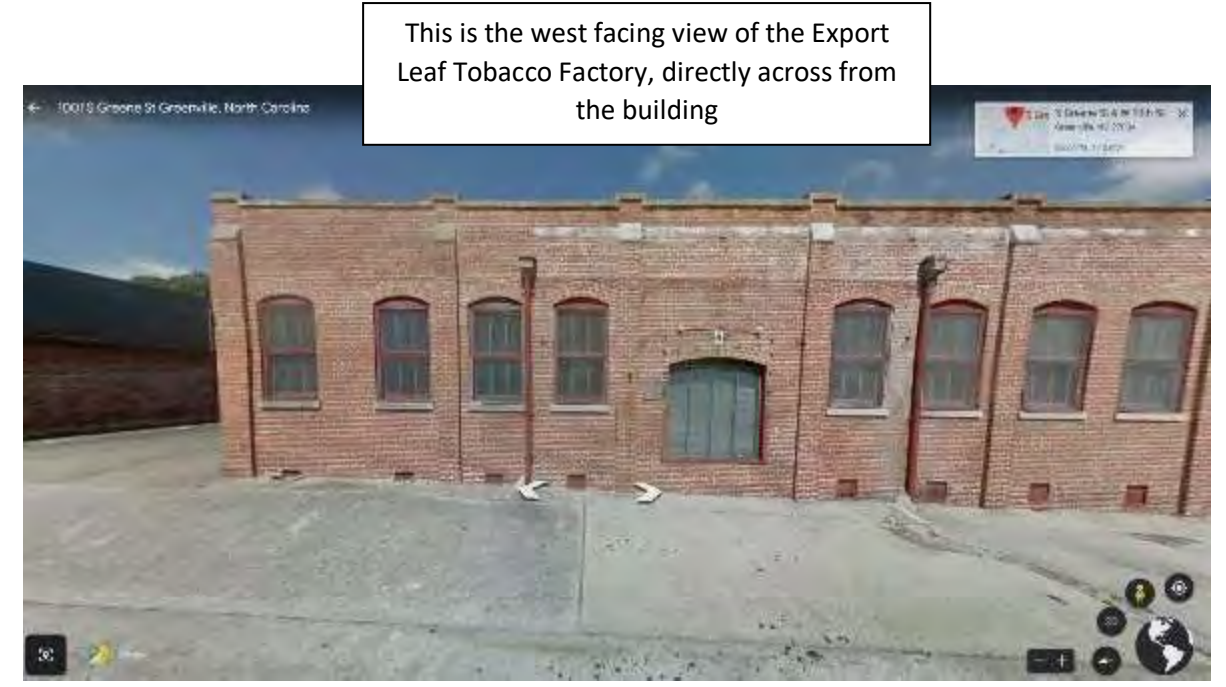
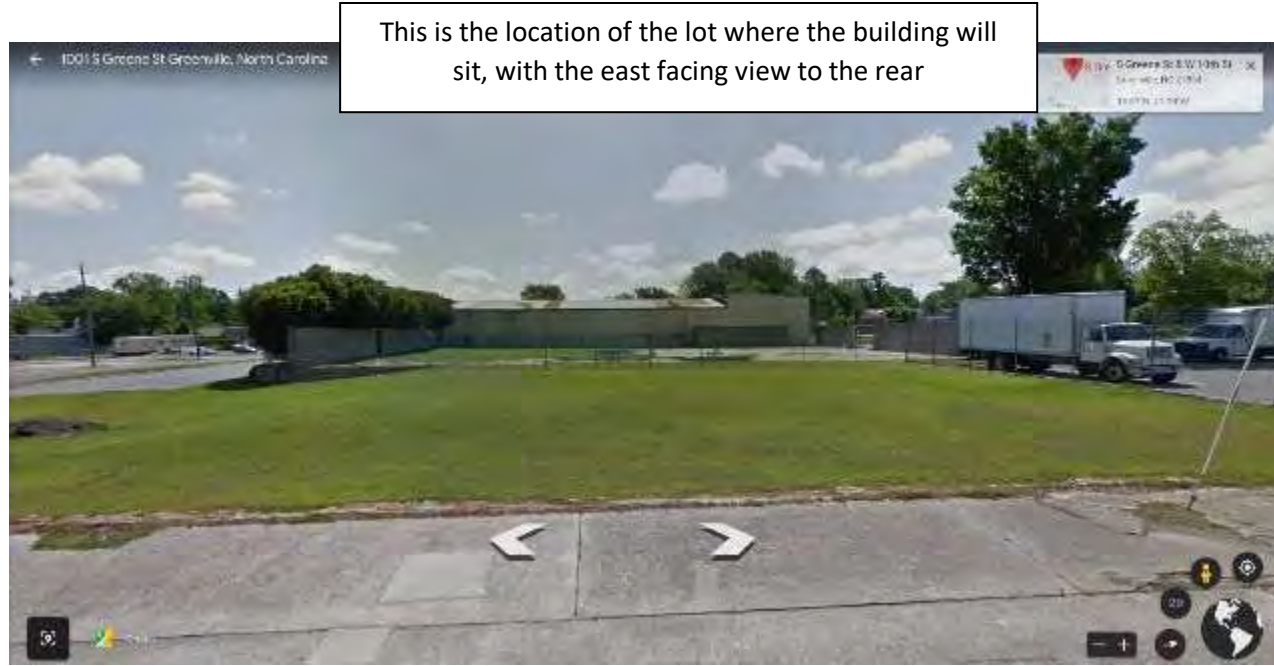
- East Carolina University, located in Greenville, North Carolina, established the East Carolina Research and Innovation Campus (ECRIC)
- The ECRIC's purpose is to facilitate partnerships with education, industry, military, and other associates
- Partnerships are necessary to create new economic business, job opportunities, and connections to private investors
- This shop will be used by students, interns, professors, entrepreneurs, graduate students, alumni, and other professional individuals

Site Profile

- Prichard-Hughes Warehouse (1905) and the American Tobacco Co. Storage (early 1900s)
- Originally focused on the 'Haynie Building' renovations, which was previously an Export Tobacco Leaf Factory built in 1914
- Located on 10th Street and South Greene Street in Greenville, NC
- Covers three blocks of west campus, totaling 22.3 acres
- Purchased in 2003



LOCATION



SITE ANALYSIS & DESIGN PROBLEM STATEMENT

Site Analysis

- The windows provided on the second floor allows for natural light to enter the building throughout the day
- This building will receive natural sunlight from the East in the morning, and from the West in the evening

Design Problem Statement

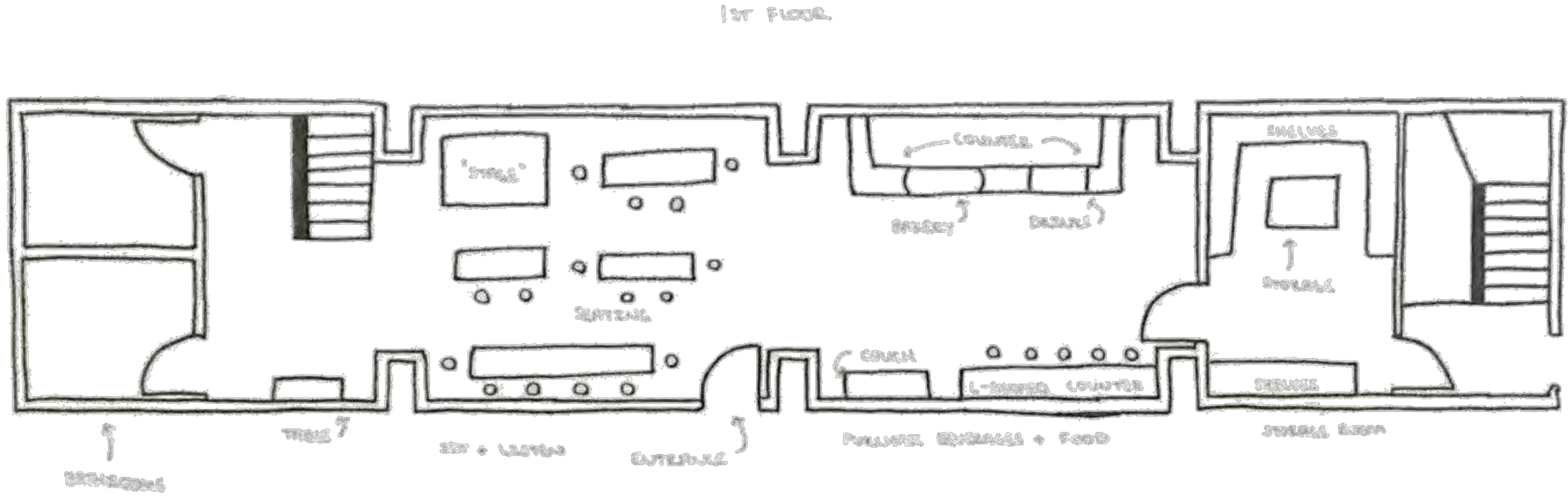
- Create a work environment focused space for professional individuals
- Preserve the natural and historic portions of the tobacco barn
- Bring more natural light into the space by utilizing the windows on the 2nd floor
- Design a more natural access to the stairs and add a second staircase
- Connect the 2nd floor, possibly by a catwalk
- Design a cohesive wayfinding path for travel



INSPIRATION IMAGES

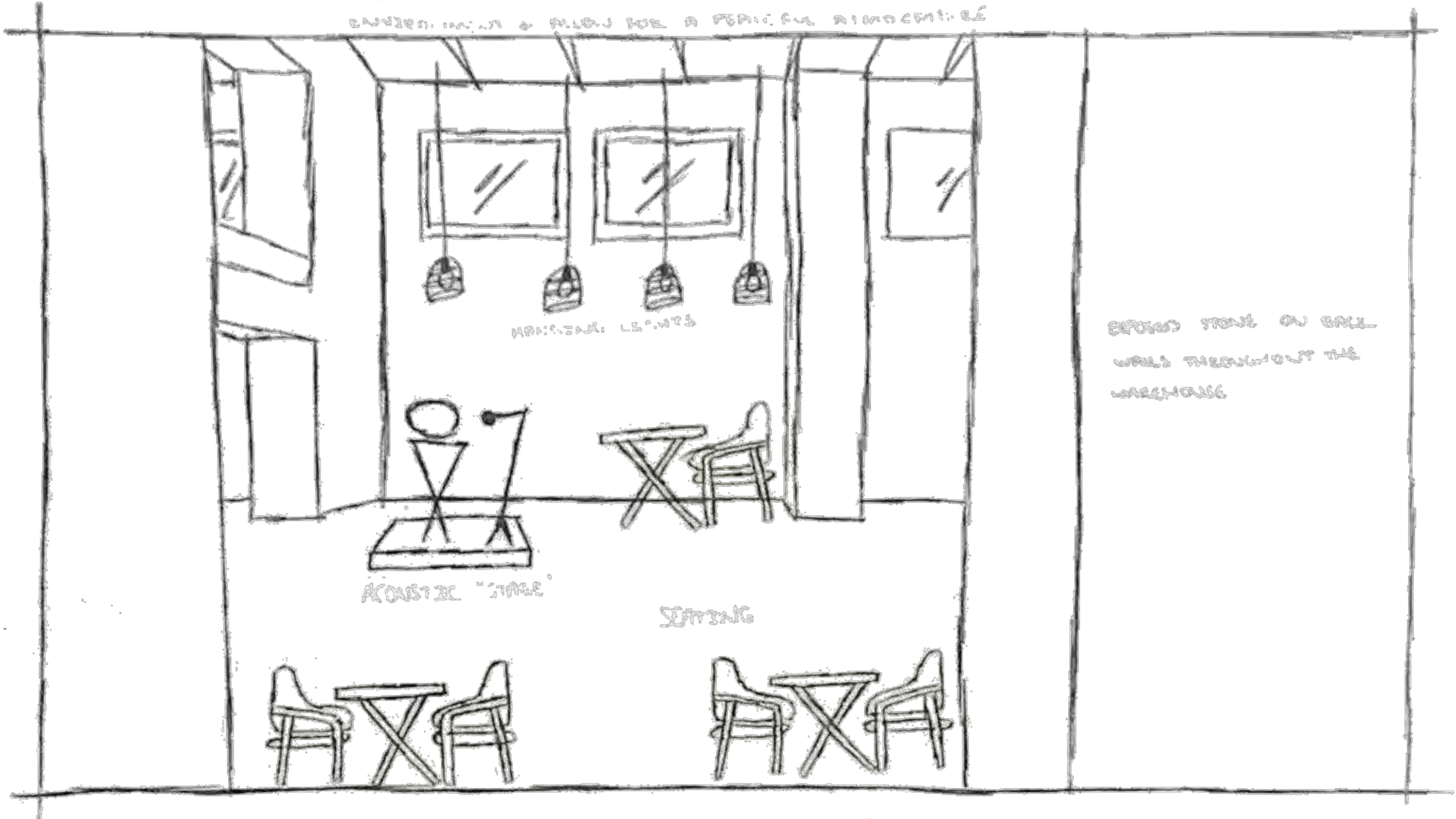


Haley Thigpen IDSN 2102 F20



Haley Thigpen IDSN 2102 F20

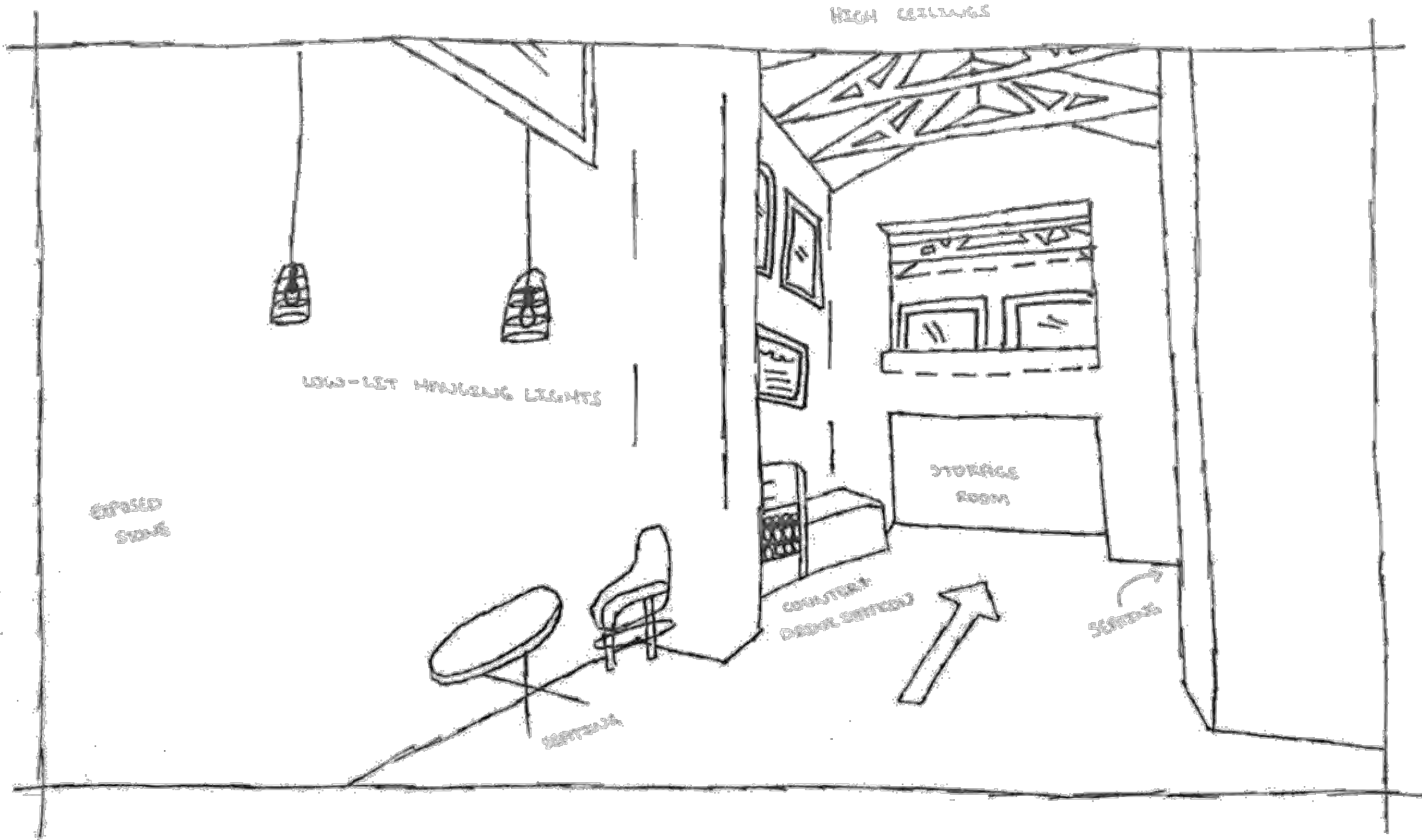
LO: HANGING LIGHTS WITH BUILT-IN COMBINATION
SOUND BARRIERS & ALLOW FOR A FEW FULL DIMENSIONAL



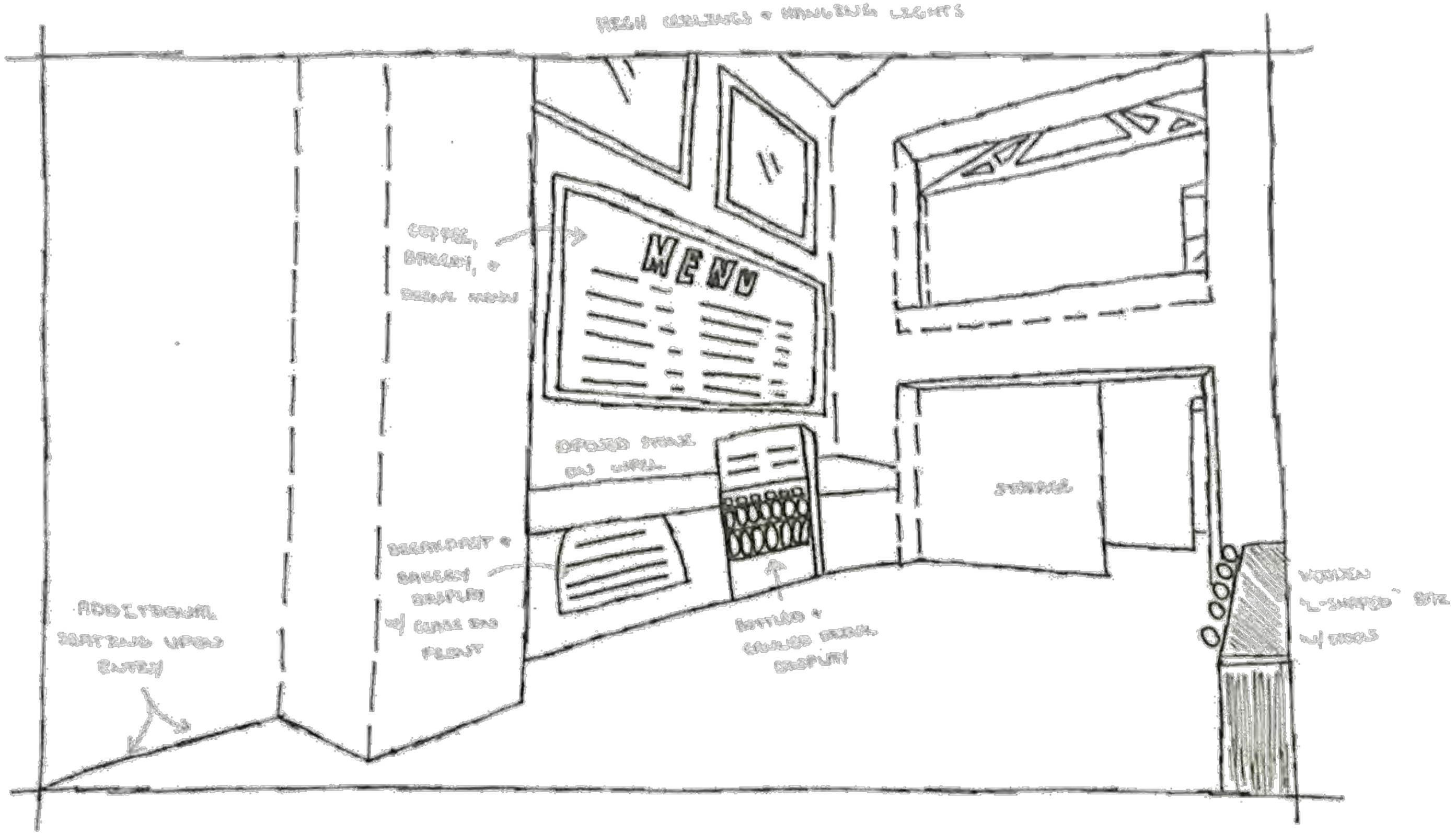
SPONGE STONE ON WALL
WALL THROUGHOUT THE
WAREHOUSE

FURNITURE WOULD HAVE WILLOWWOOD FLOORS TO DEVELOP A RUSTIC
DESIGN THROUGHOUT THE SPACE

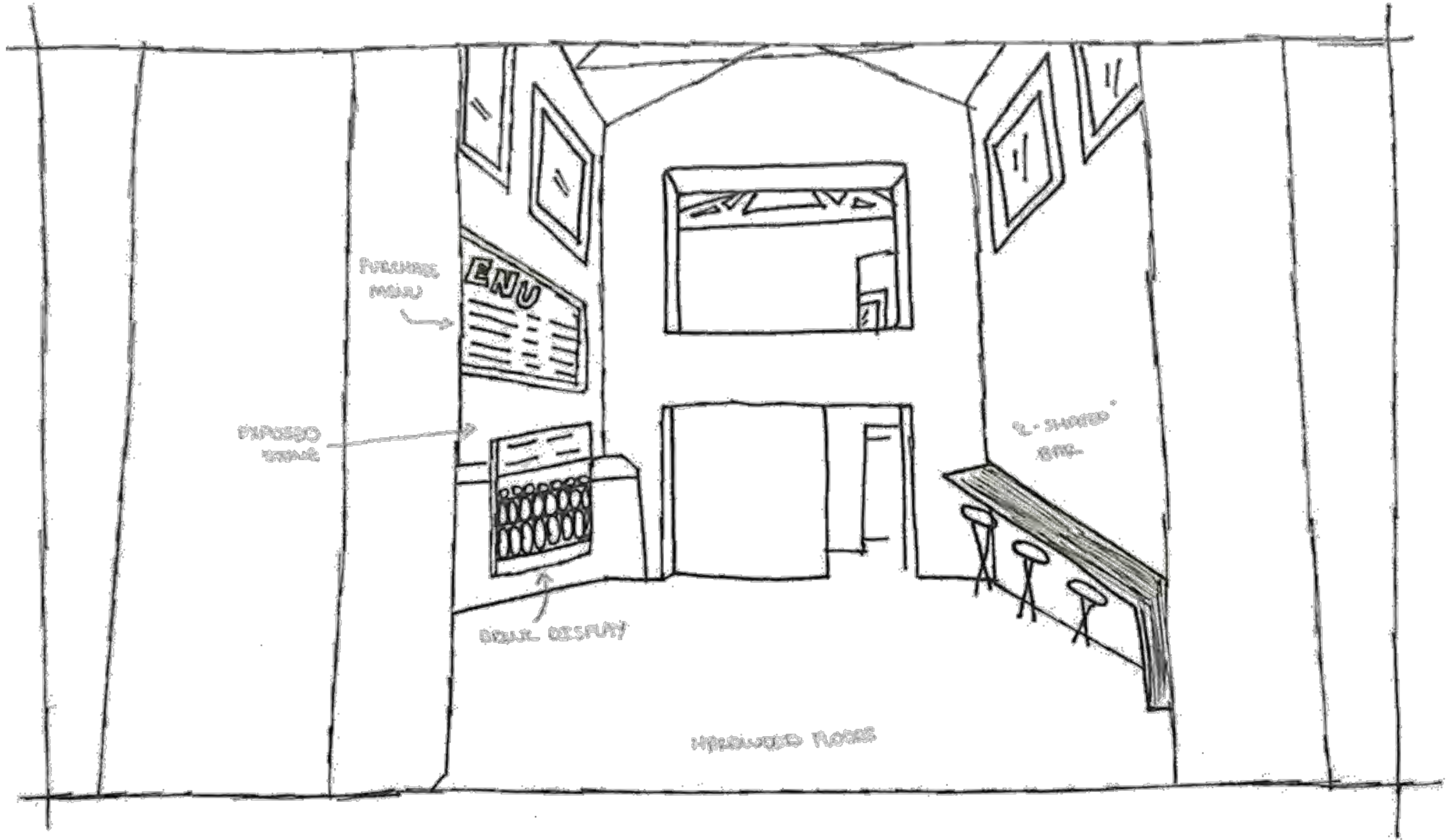
Haley Thigpen IDSN 2102 F20



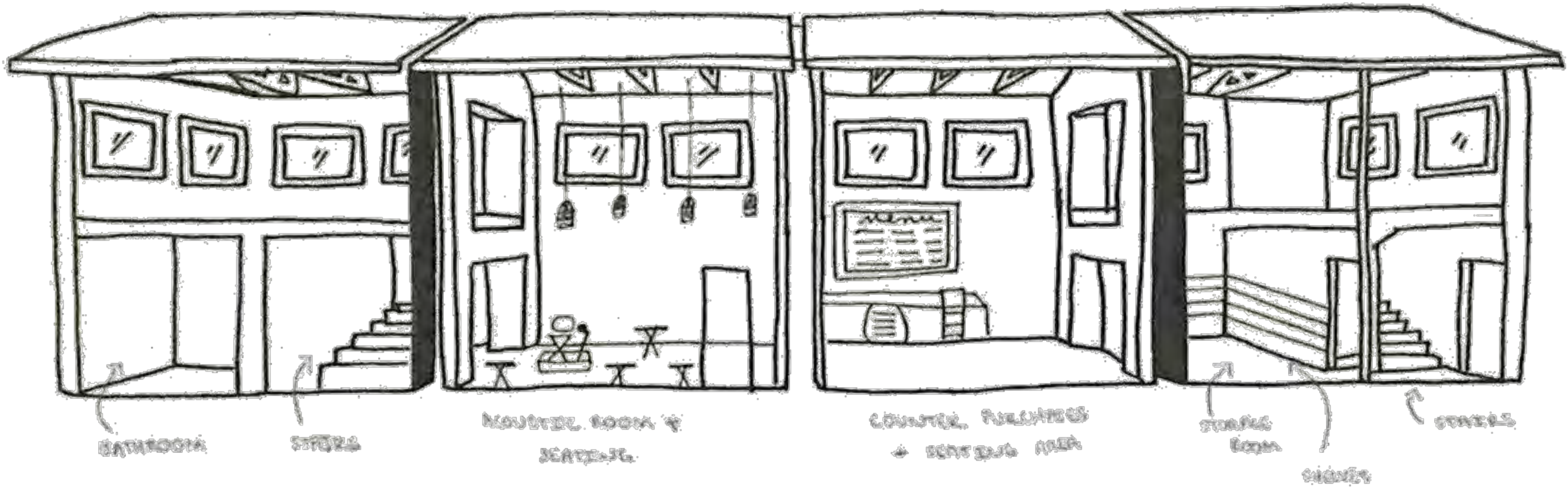
Haley Thigpen | IDSN 2102 F20



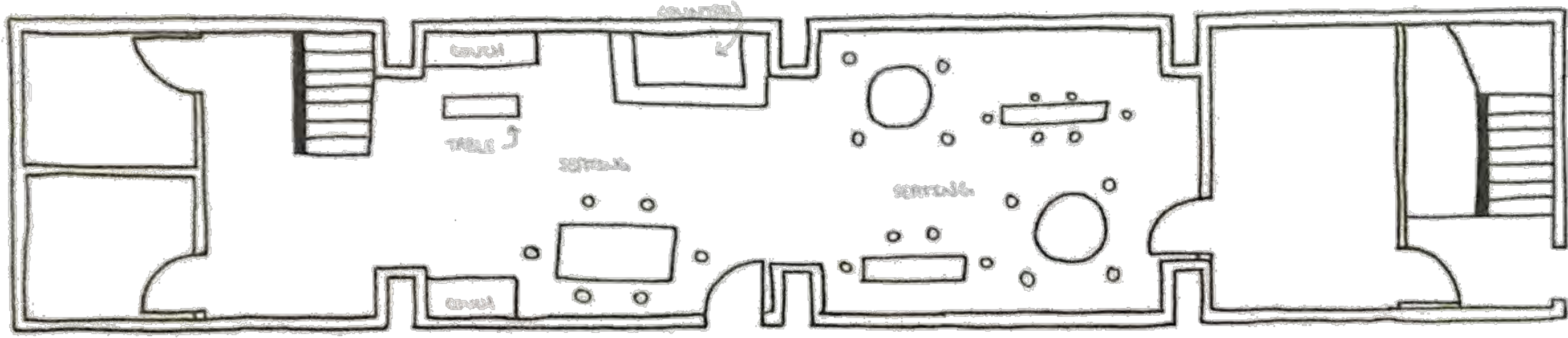
Haley Thigpen IDSN 2102 F20



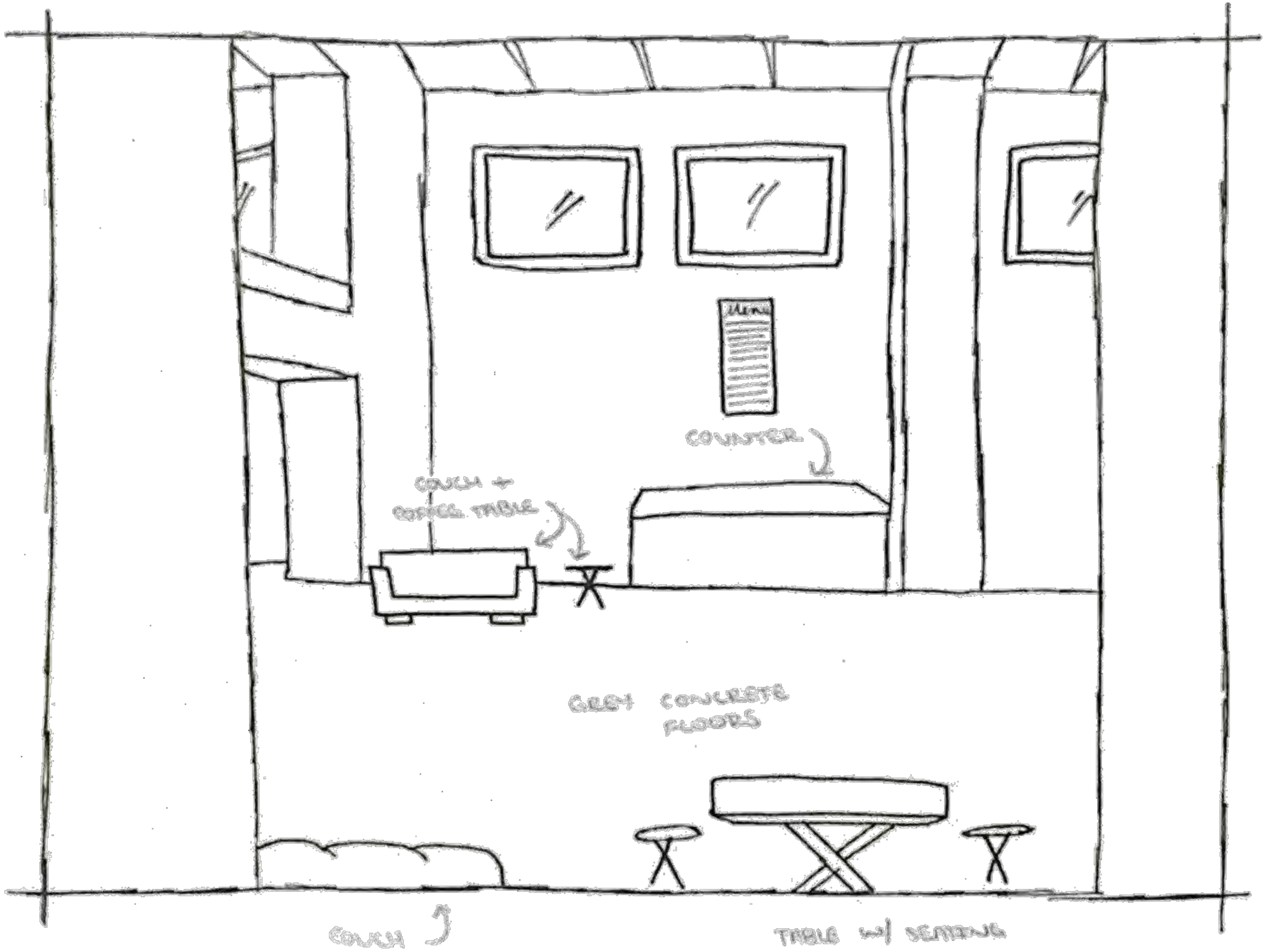
Haley Thigpen IDSN 2102 F20



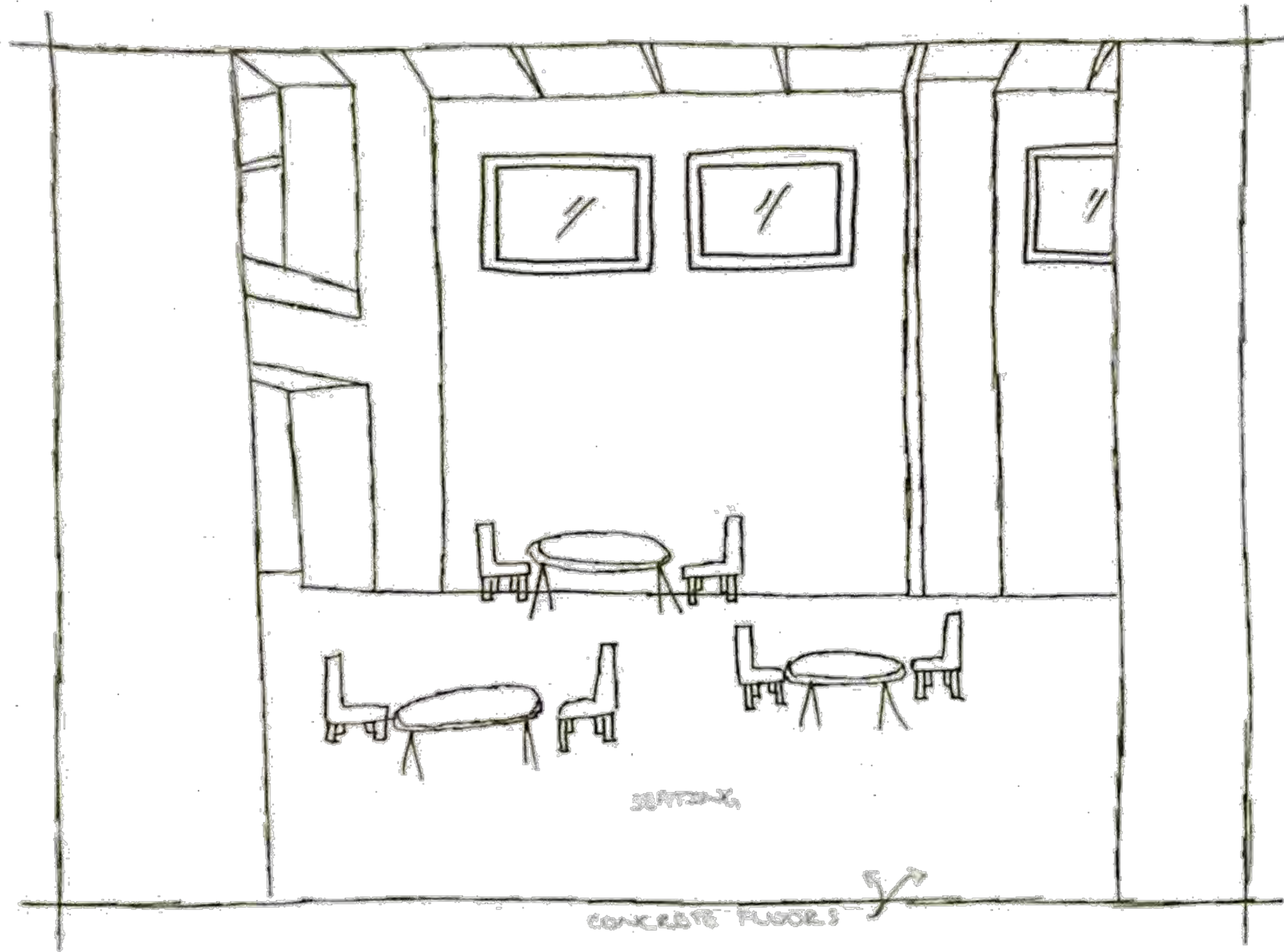
END 2ND FLOOR FOR CATER
 PLASTIC BOUNDS + FEATURE
 WOODEN VAULTS



Haley Thigpen IDSN 2102 F20



Haley Thigpen IDSN 2102 F20

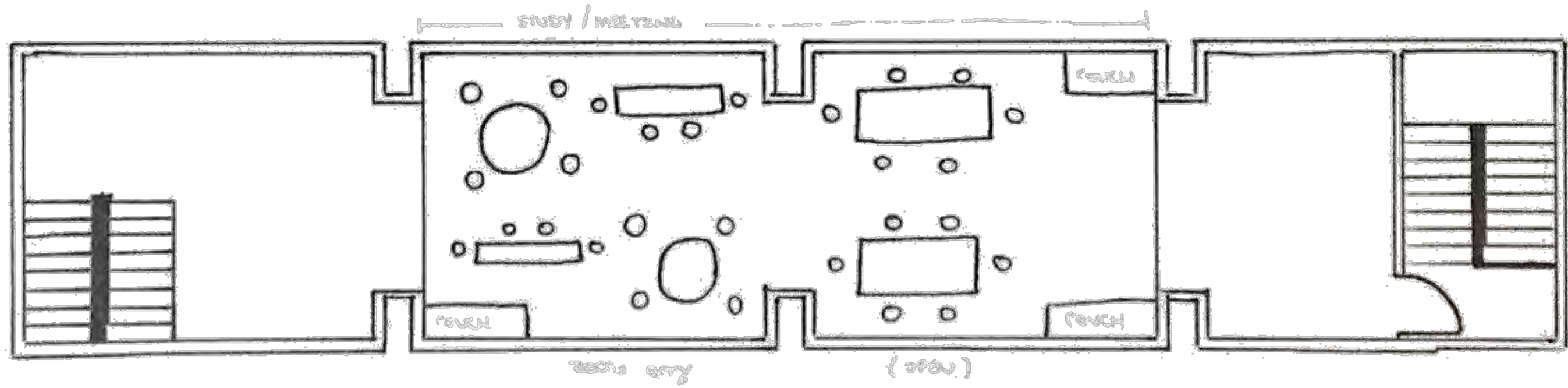
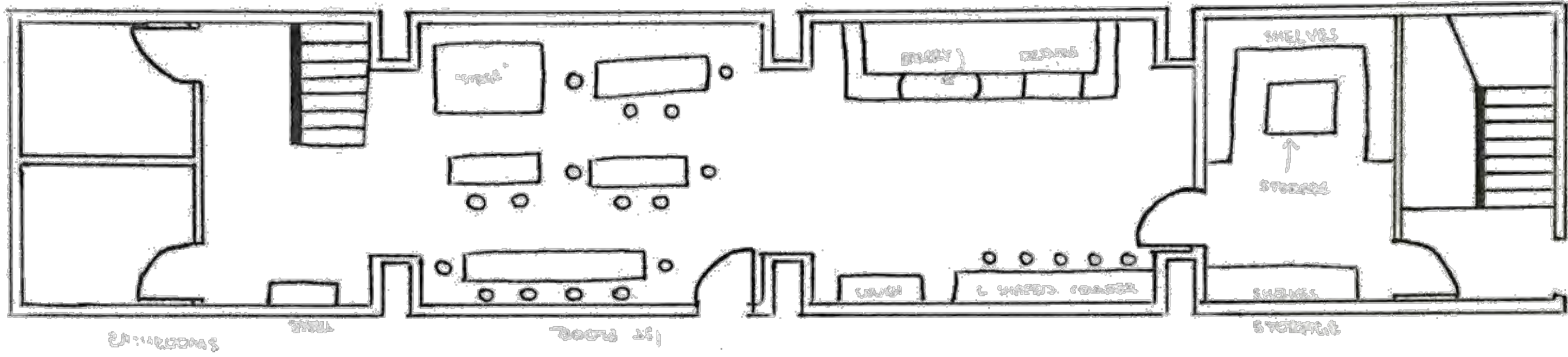


SEATING

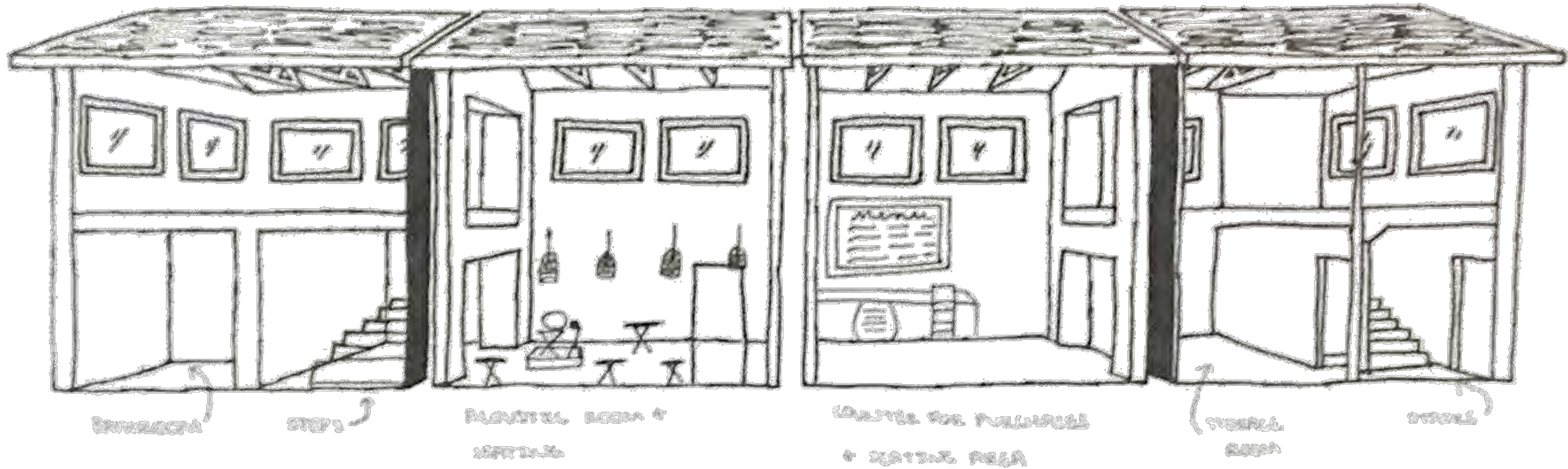
CONCRETE FLOOR

ROOM BY THE STREETS

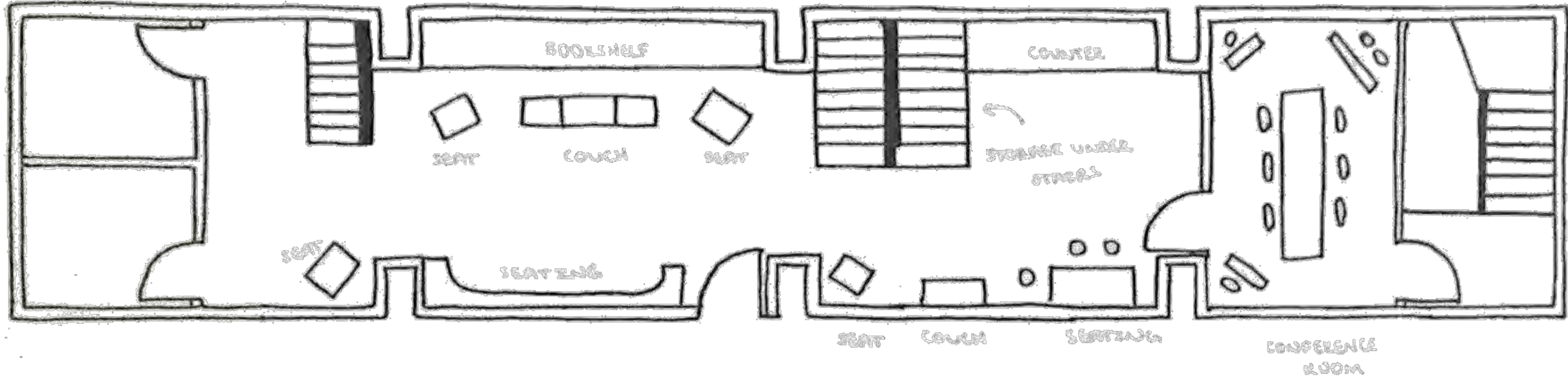
Haley Thigpen IDSN 2102 F20



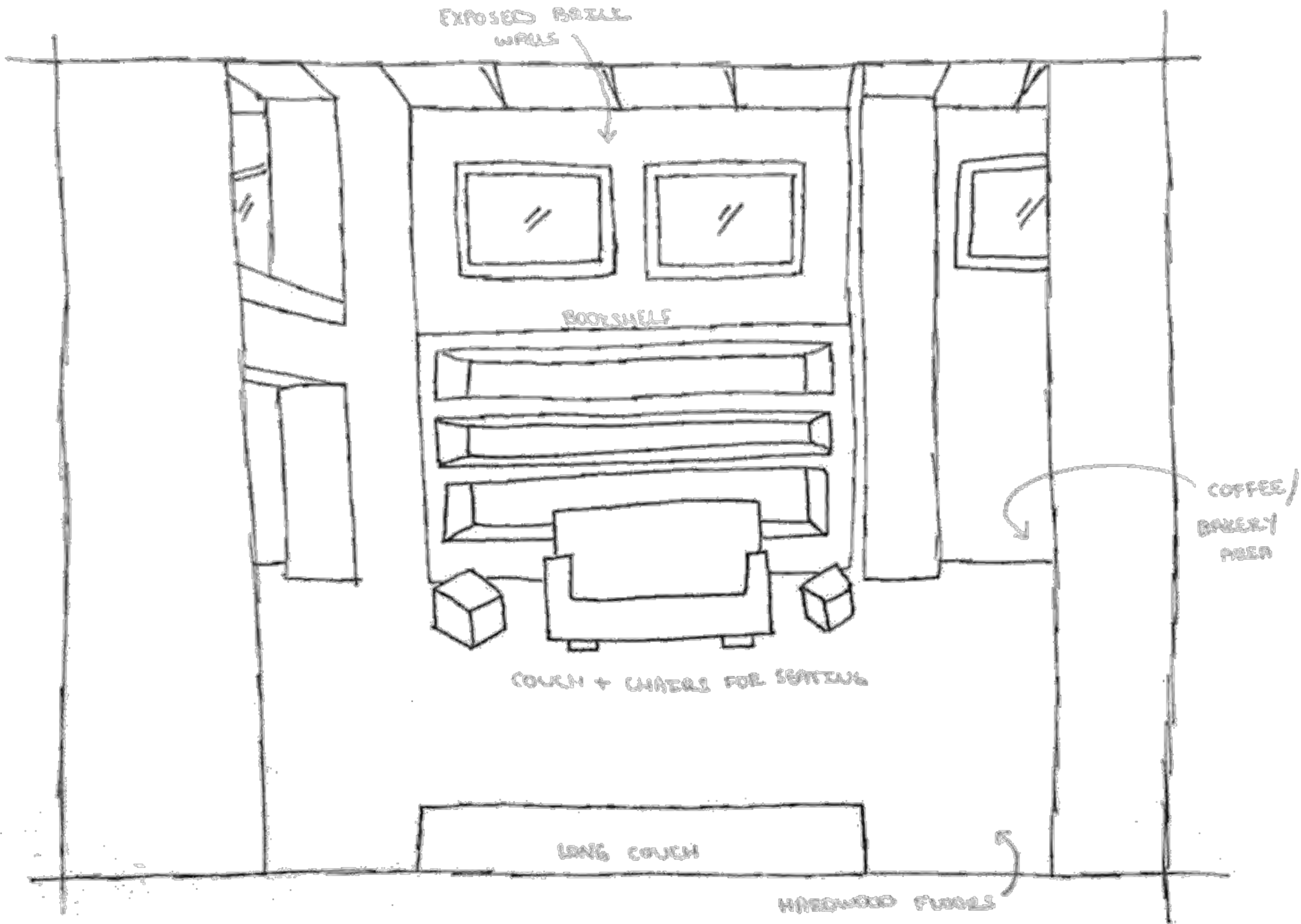
Haley Thigpen IDSN 2102 F20



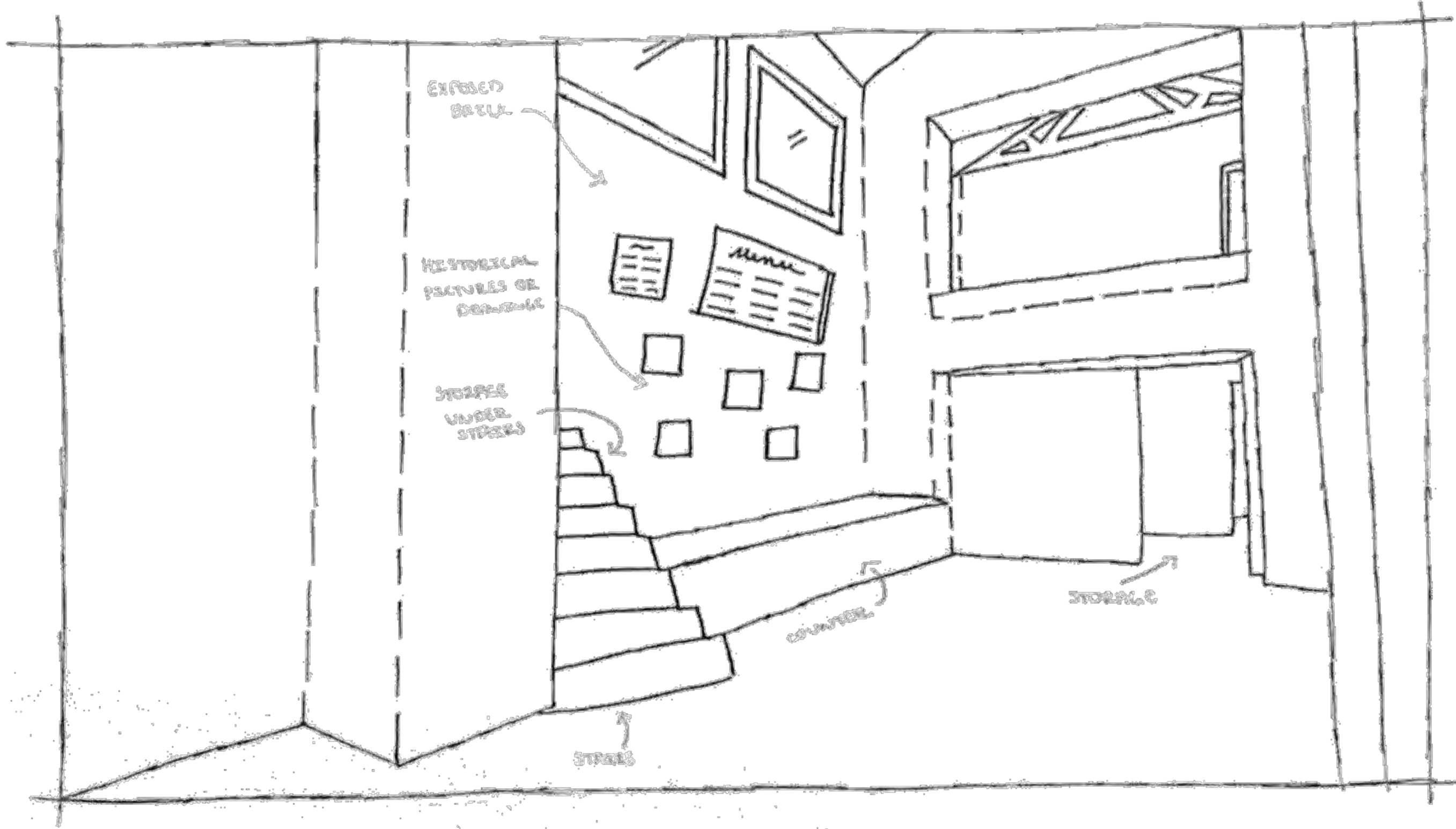
Haley Thigpen IDSN 2102 F20



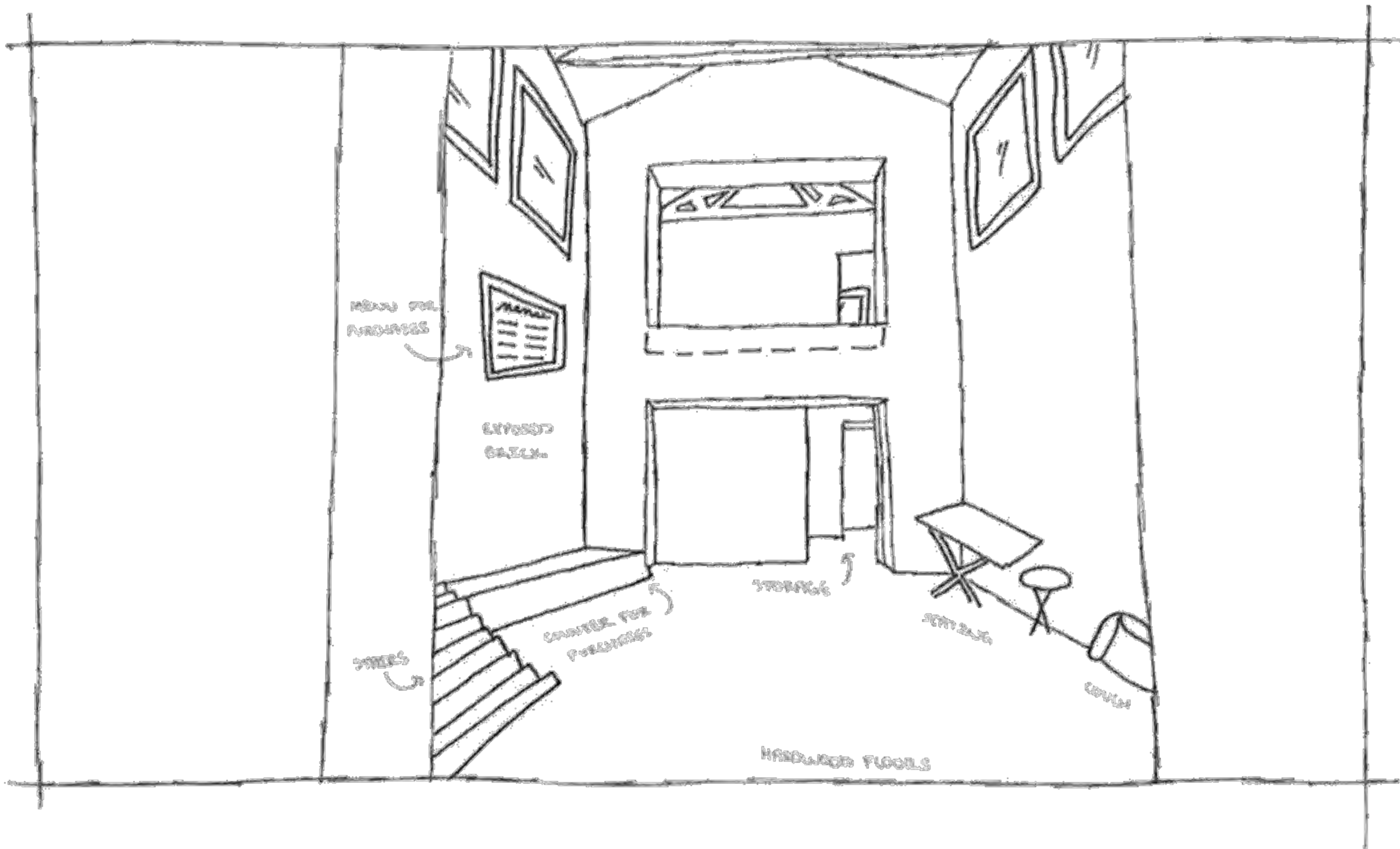
Haley Thigpen IDSN 2102 F20



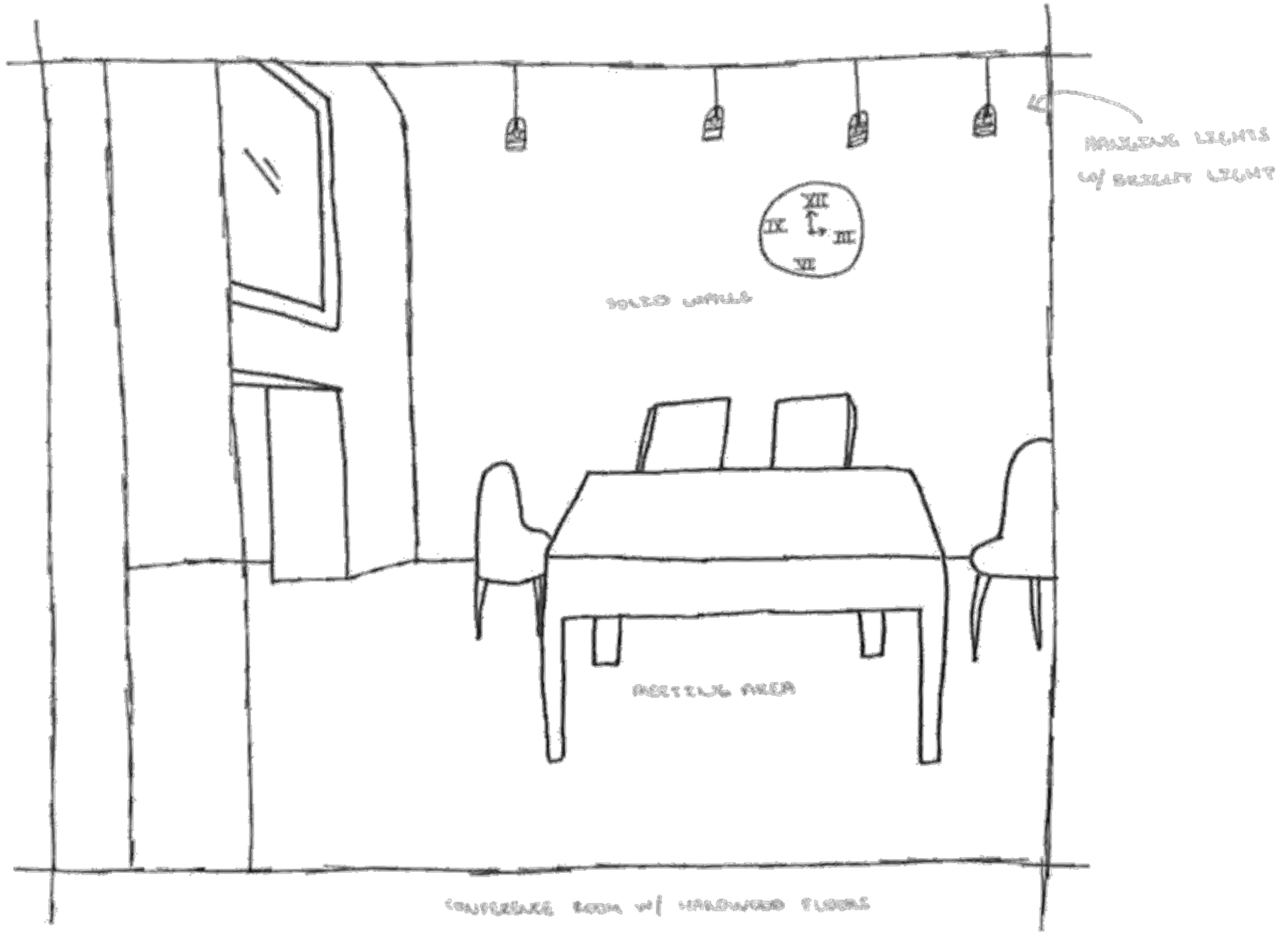
Haley Thigpen IDSN 2102 F20



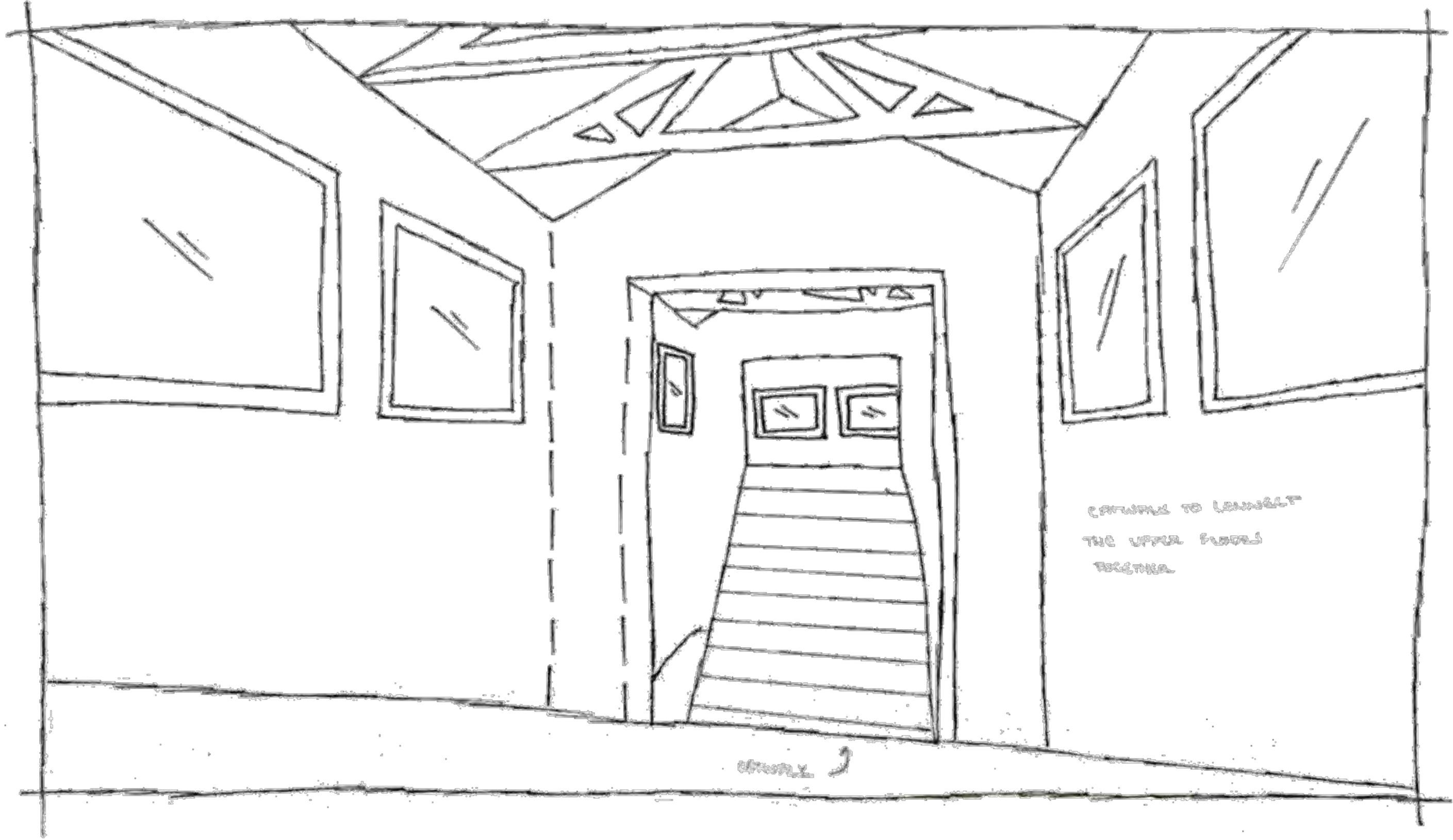
Haley Thigpen | IDSN 2102 F20



Haley Thigpen IDSN 2102 F20



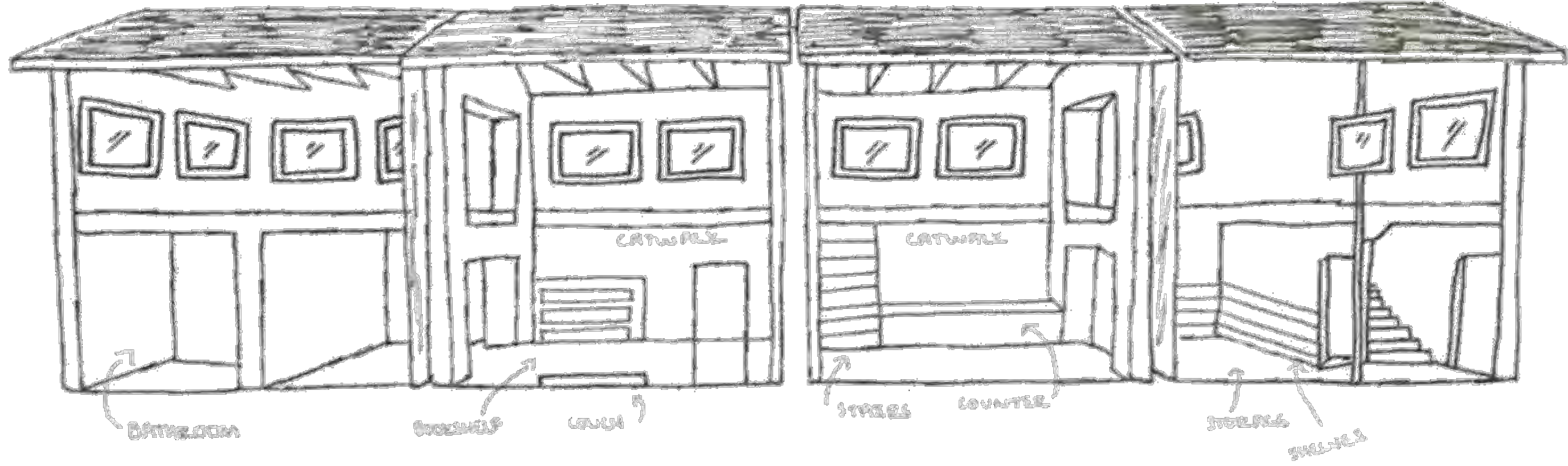
Haley Thigpen IDSN 2102 F20



CONSOLE TO LINK UP
THE UPPER FLOORS
TOGETHER

CONSOLE

Haley Thigpen IDSN 2102 F20



Haley Thigpen IDSN 2102 F20