

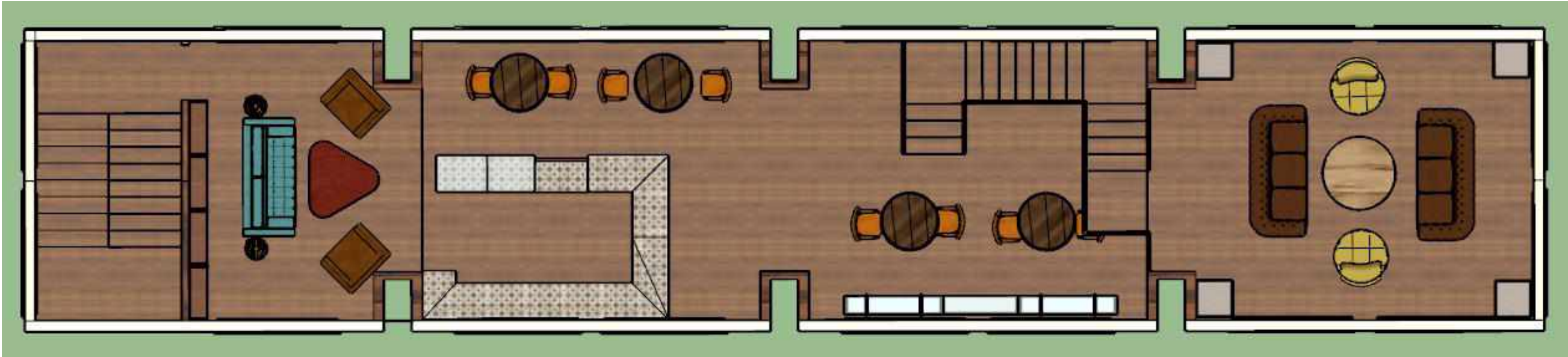
# Portfolio Three

Amanda Comley

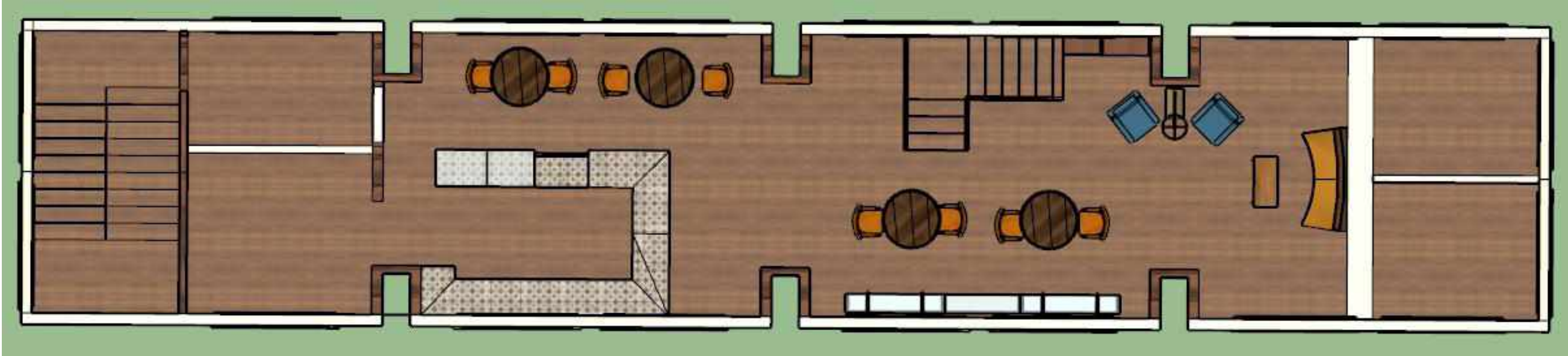
IDSN 2102

Professor Gustina

# Assignment 8 – Final Furniture Plan



Second Floor Plan



First Floor Plan

Amanda Comley IDSN 2102 F20

## Assignment 9 A – Concept

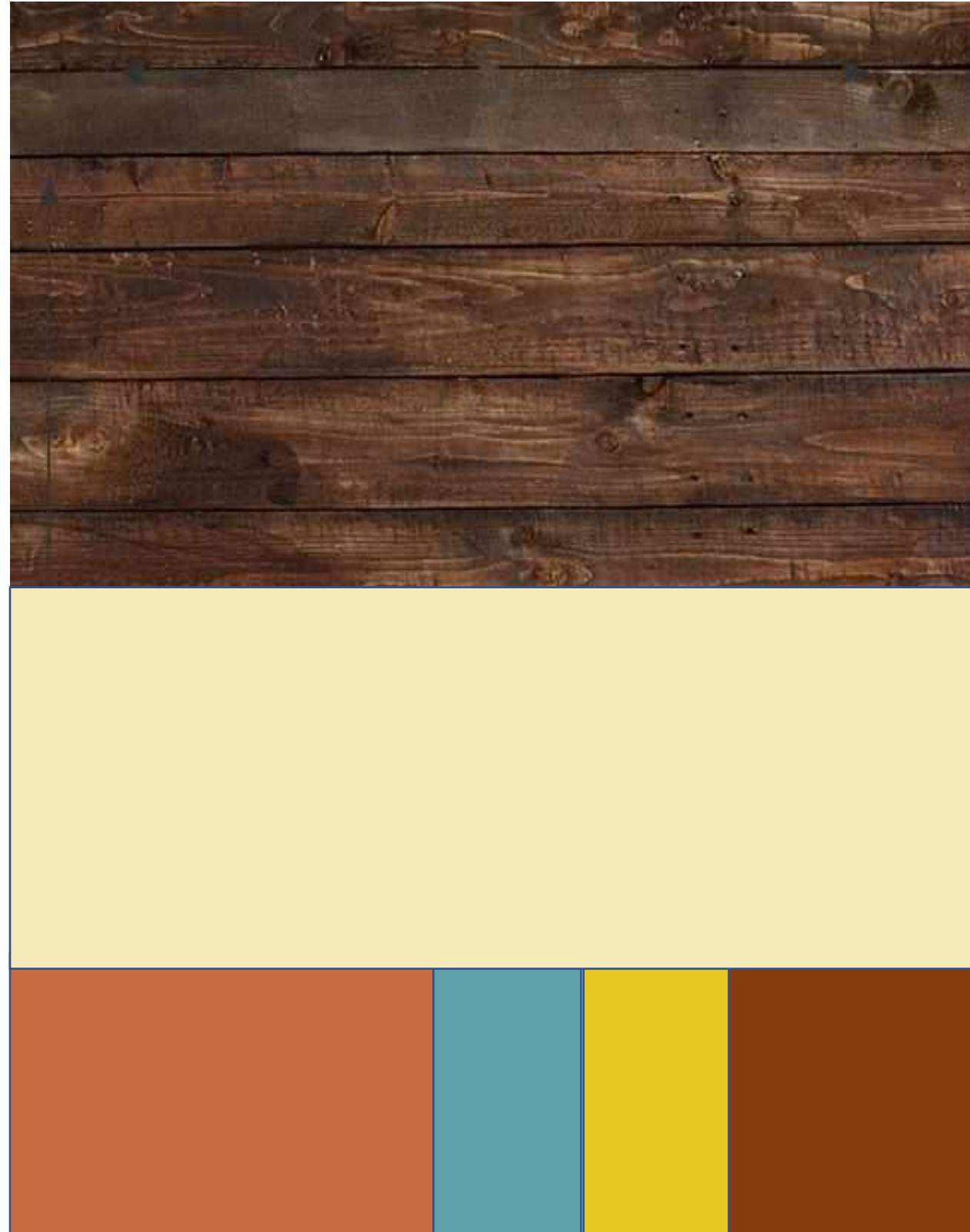
- This café will function as a gathering space for locals and workers in the area, as well as a space for students to study and interact.
- The design of the café will reflect the rustic style of the barn while bringing in mid-century modern elements to create an inviting and retro look that combines the new with the old.



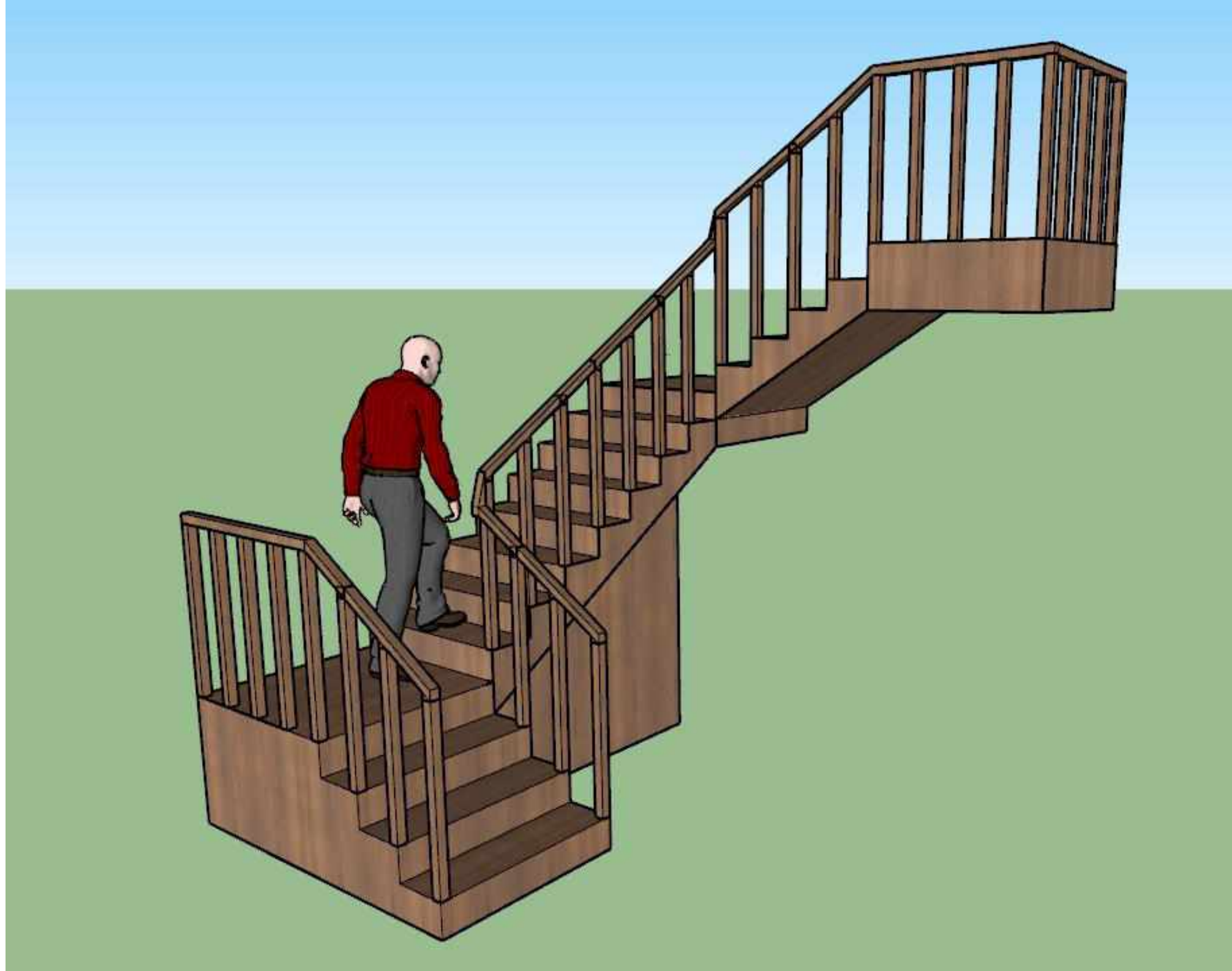
Amanda Comley IDSN 2102 F20

## Assignment 9B – Color Rationale

- The color pallet uses warm neutrals and pops of color to give a comforting and happy feeling.
- In the design there are many dark brown wood elements, so the brighter colors are there to lighten up the space.
- There will be warm lighting to help create a calm atmosphere for people to get work done in.
- The colors and materials used represent the transition from the old Greenville to the newer more modernized version it has become since the tobacco barns stoppped being used.



## Assignment 10 – Final Stair Model



Amanda Comley IDSN 2102 F20

# Assignments 11 & 12 – Model Scenes

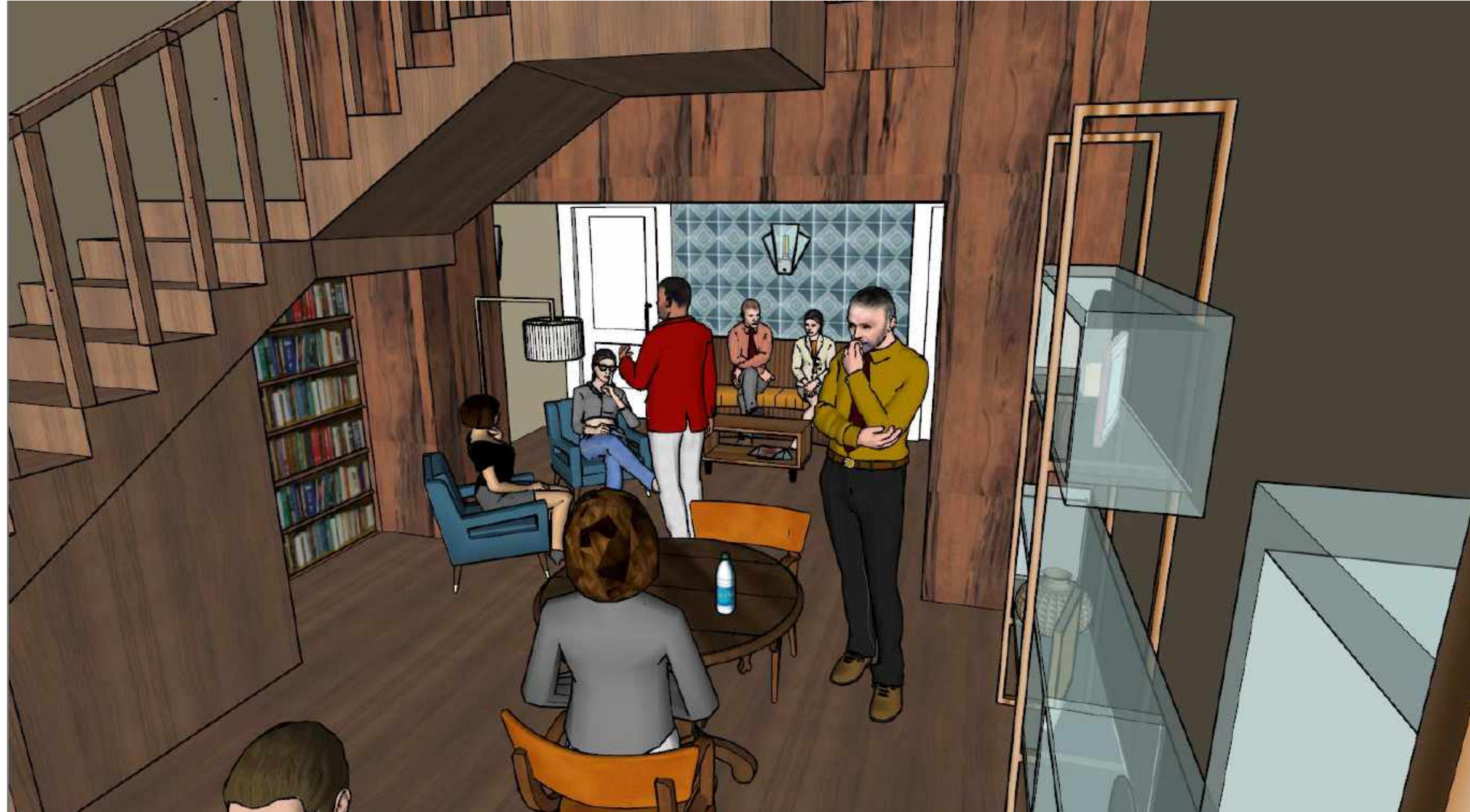
## Scene 1 – Counter



Amanda Comley IDSN 2102 F20

# Assignments 11 & 12 – Model Scenes

## Scene 2 – Seating/Waiting Area



Amanda Comley IDSN 2102 F20

# Assignments 11 & 12 – Model Scenes

## Scene 2 – Stair Landing



Amanda Comley IDSN 2102 F20



# Assignments 11 & 12 – Model Scenes

## Scene 3 – Lounge A



Amanda Comley IDSN 2102 F20

# Assignments 11 & 12 – Model Scenes

## Scene 5 – Lounge B



Amanda Comley IDSN 2102 F20