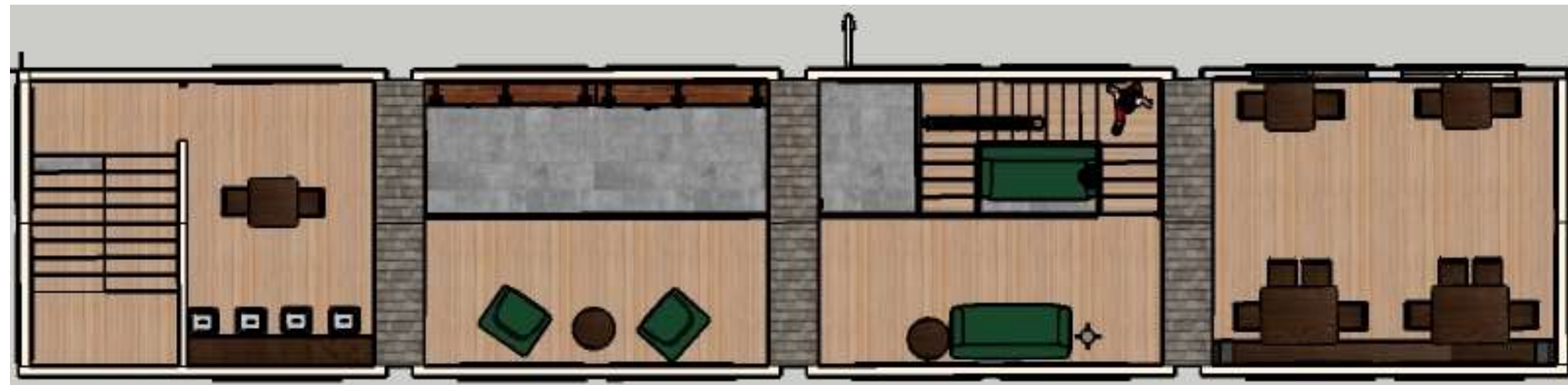


Assignment 8-  
Final Furniture Plan



First Floor Plan



Second Floor Plan

**Natalya Hall**

IDSN 2102 F20

## Assignment 9A-

### Concept

- This coffee house design is to reflect the history of tobacco barns.
- The materials and color used are to evoke a warm and smoky environment, while also being an inviting space.
- The design for the coffee house is industrial while incorporating elements of a tobacco barn.
- The goal is to create an inviting environment with the use of warm colors and natural wood throughout the building.



## Natalya Hall

IDSN 2102 F20

## Assignment 9B-

### Color Rationale

This color palate uses earthy tones:

- Warm agricultural tones
- Cool metal accents
- Small touches of a deep green

-These colors are reminiscent of the materials used for old tobacco barns, along with the colors of both dried and fresh tobacco leaves.

-This color palate is used to create a warm and homey feel along with showing the history of the tobacco barns used for the building.

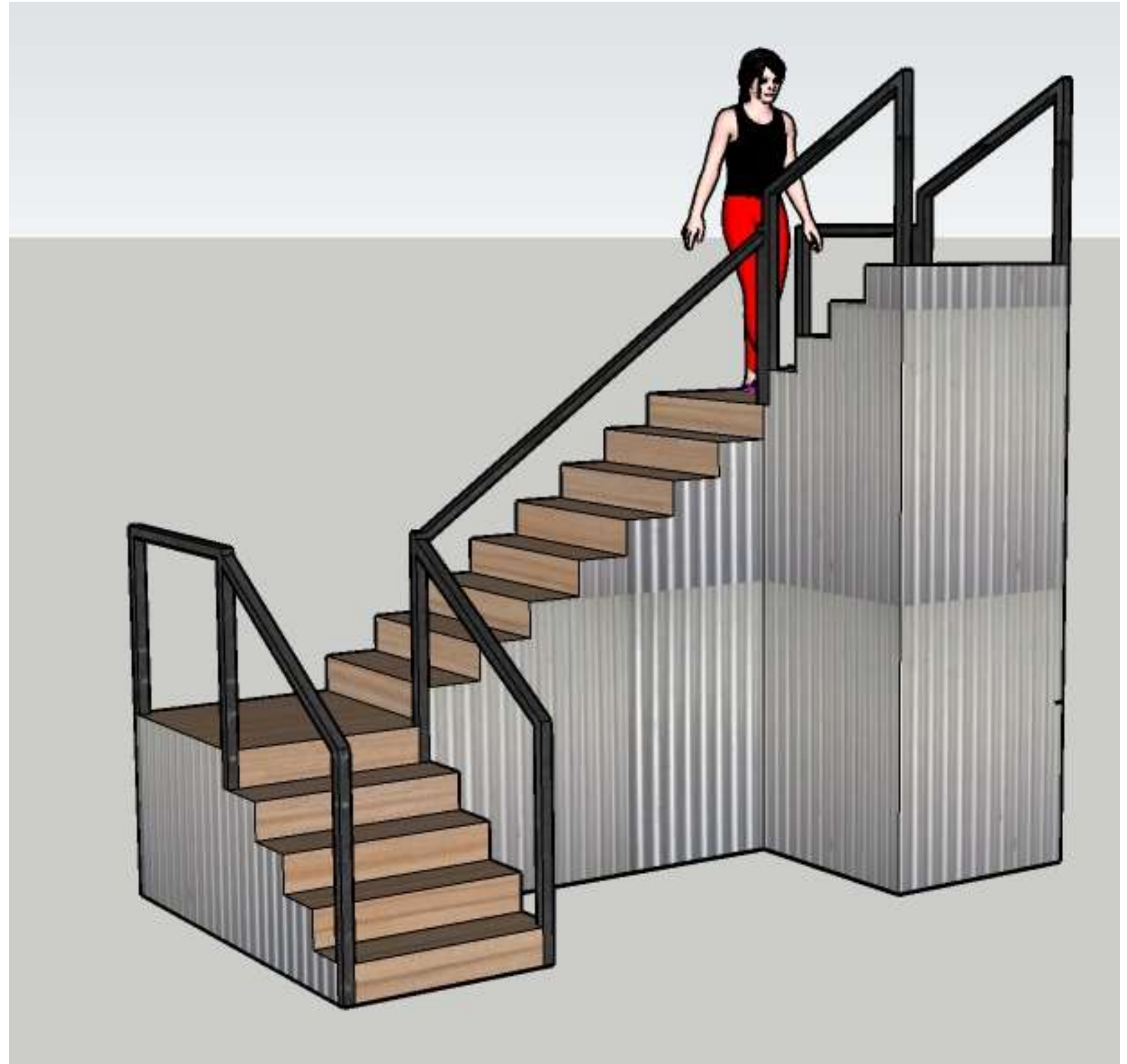
## Natalya Hall

IDSN 2102 F20



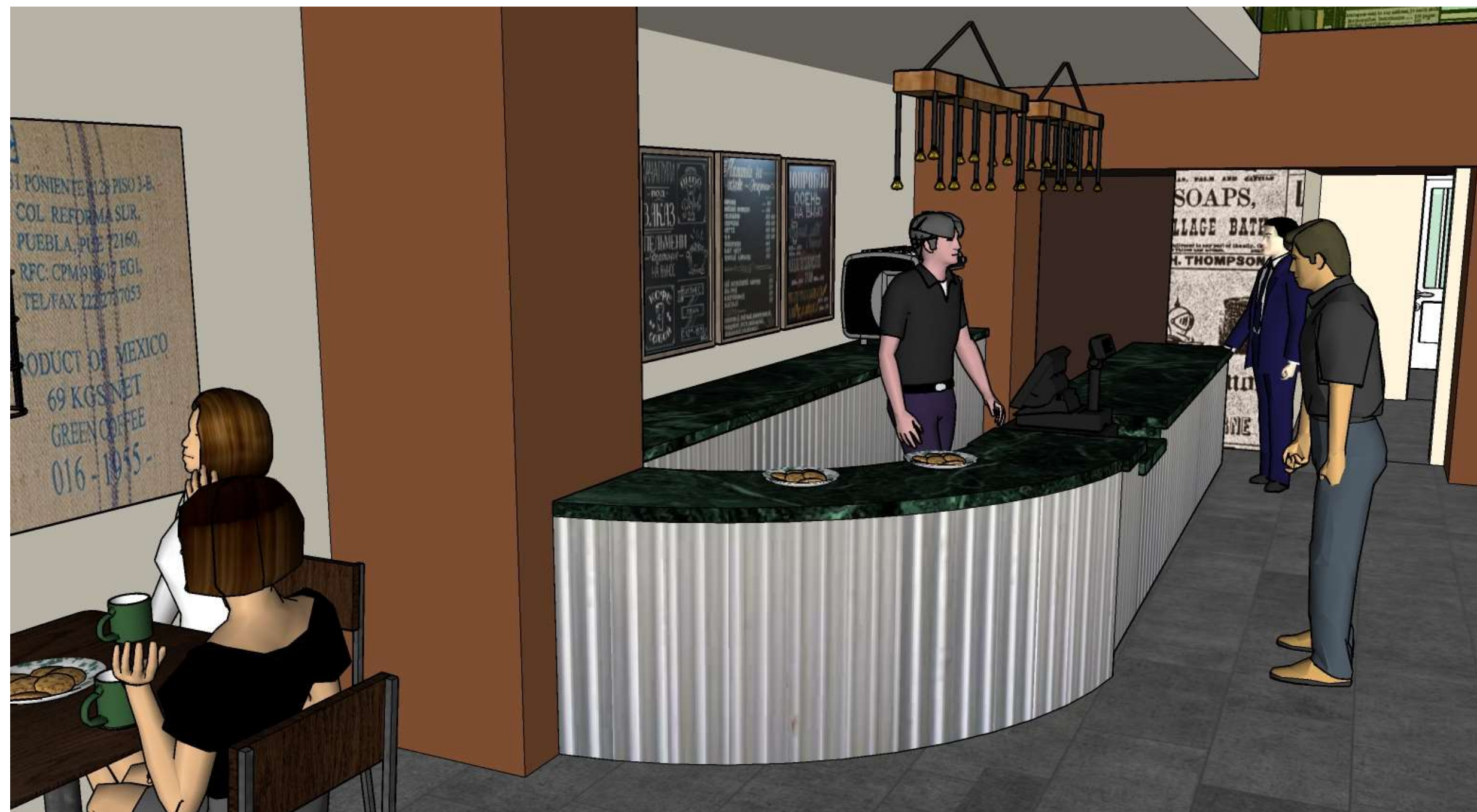
Assignment 10-  
Final Stair Model

**Natalya Hall**  
IDSN 2102 F20



Assignment 11 and 12-  
Model Scenes

Scene 1 - Counter



**Natalya Hall**

IDSN 2102 F20

Assignment 11 and 12-  
Model Scenes

Scene 2- Second Floor



**Natalya Hall**

IDSN 2102 F20

Assignment 11 and 12-  
Model Scenes

Scene 3- Second Floor



**Natalya Hall**

IDSN 2102 F20

Assignment 11 and 12-  
Model Scenes

Scene 4- Stair Landing



**Natalya Hall**

IDSN 2102 F20



Assignment 11 and 12-  
Model Scenes

Scene 5- Behind the Counter



**Natalya Hall**

IDSN 2102 F20

Assignment 11 and 12-  
Model Scenes

Scene 6- Base of Stairs



**Natalya Hall**

IDSN 2102 F20

Assignment 11 and 12-  
Model Scenes

Scene 7- First Floor



**Natalya Hall**

IDSN 2102 F20