

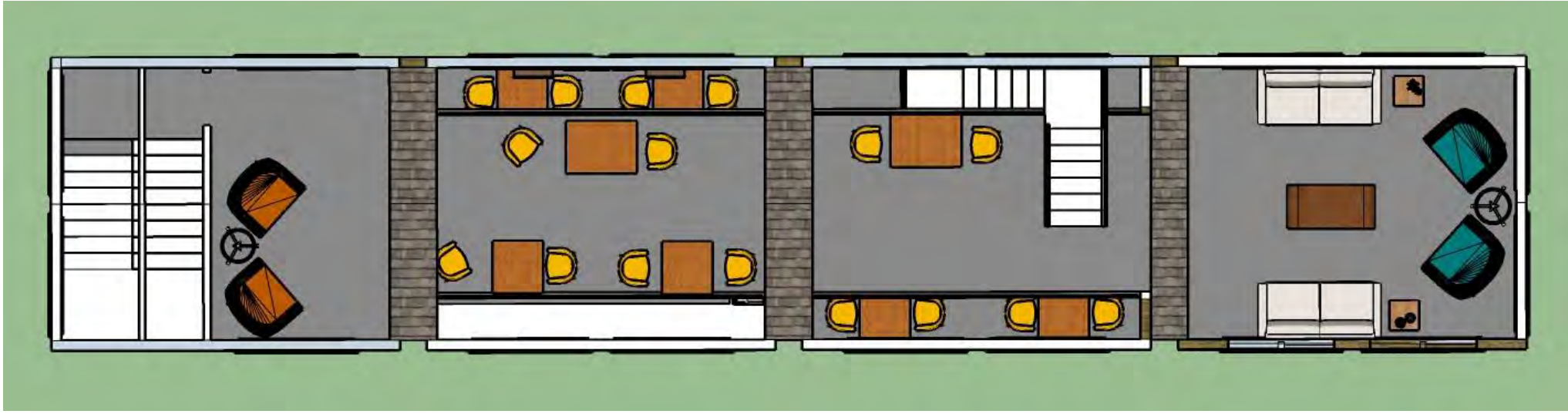


Portfolio 3

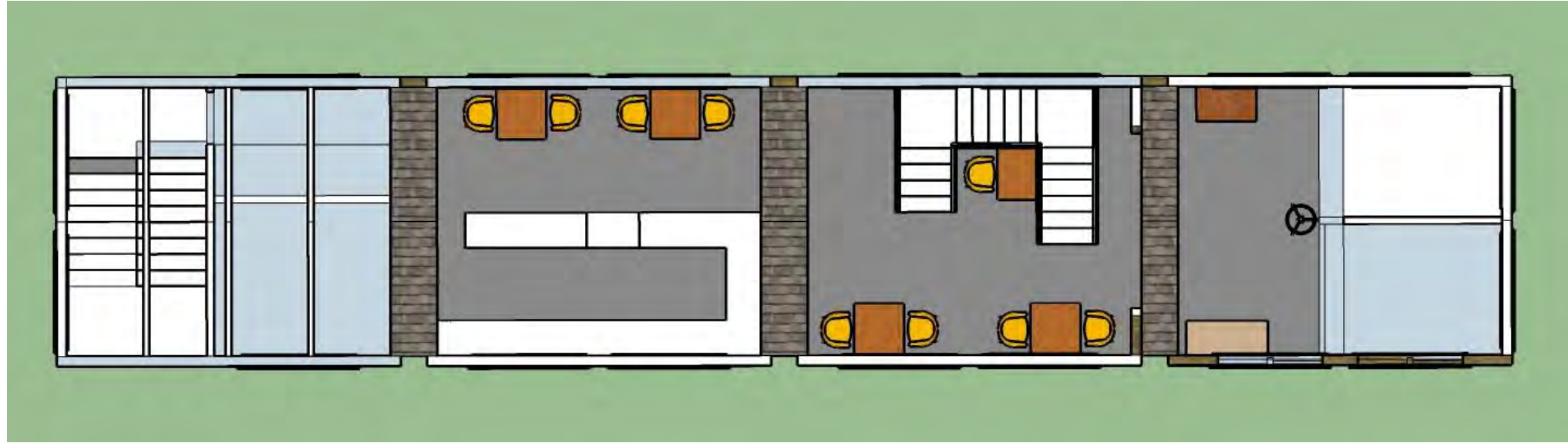
Anna Stewart

IDSN 2102 F20

Assignment 8-
Final Furniture Plan



Second Floor Plan

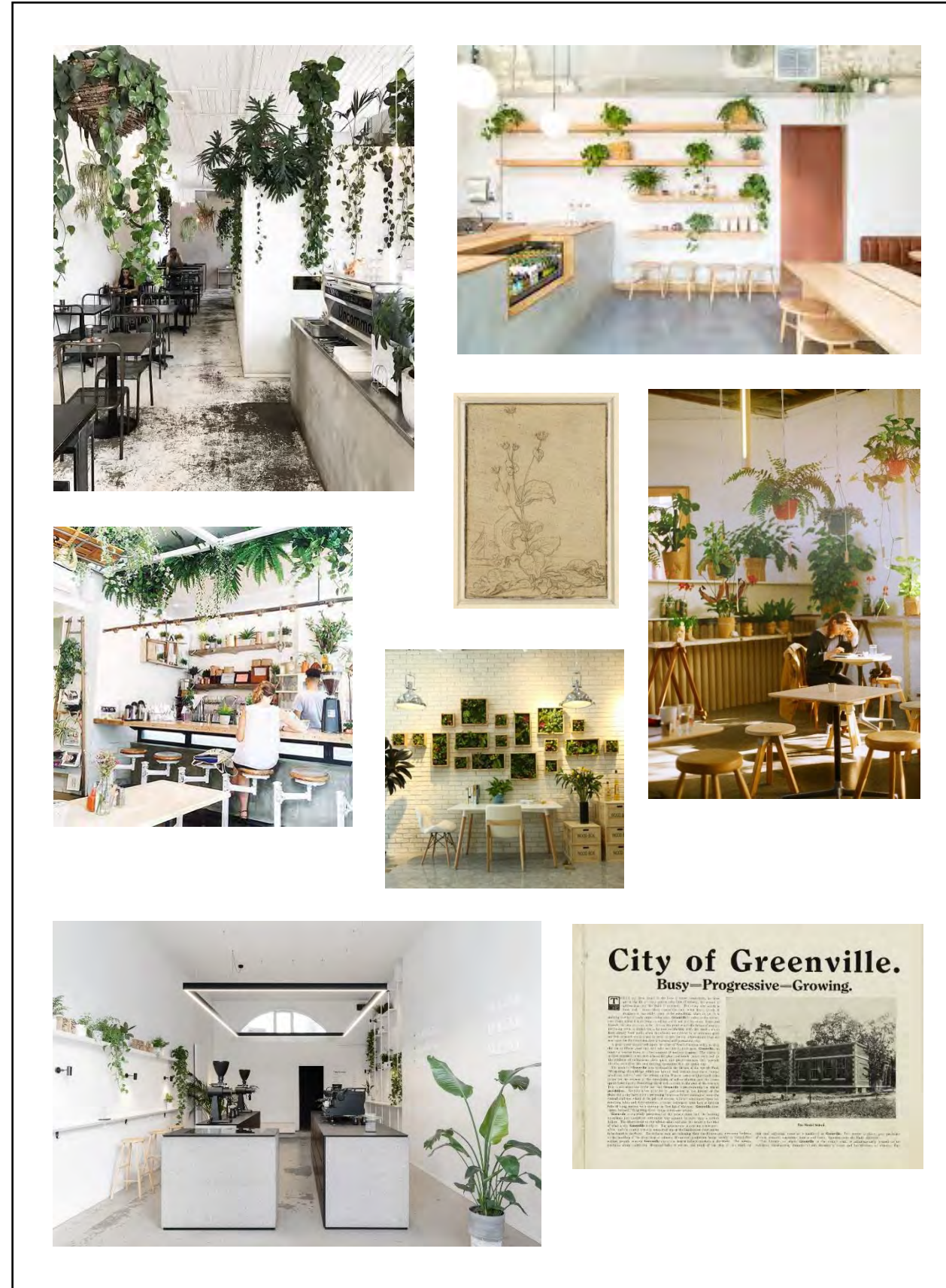


First Floor Plan

Anna Stewart
IDSN 2102 F20

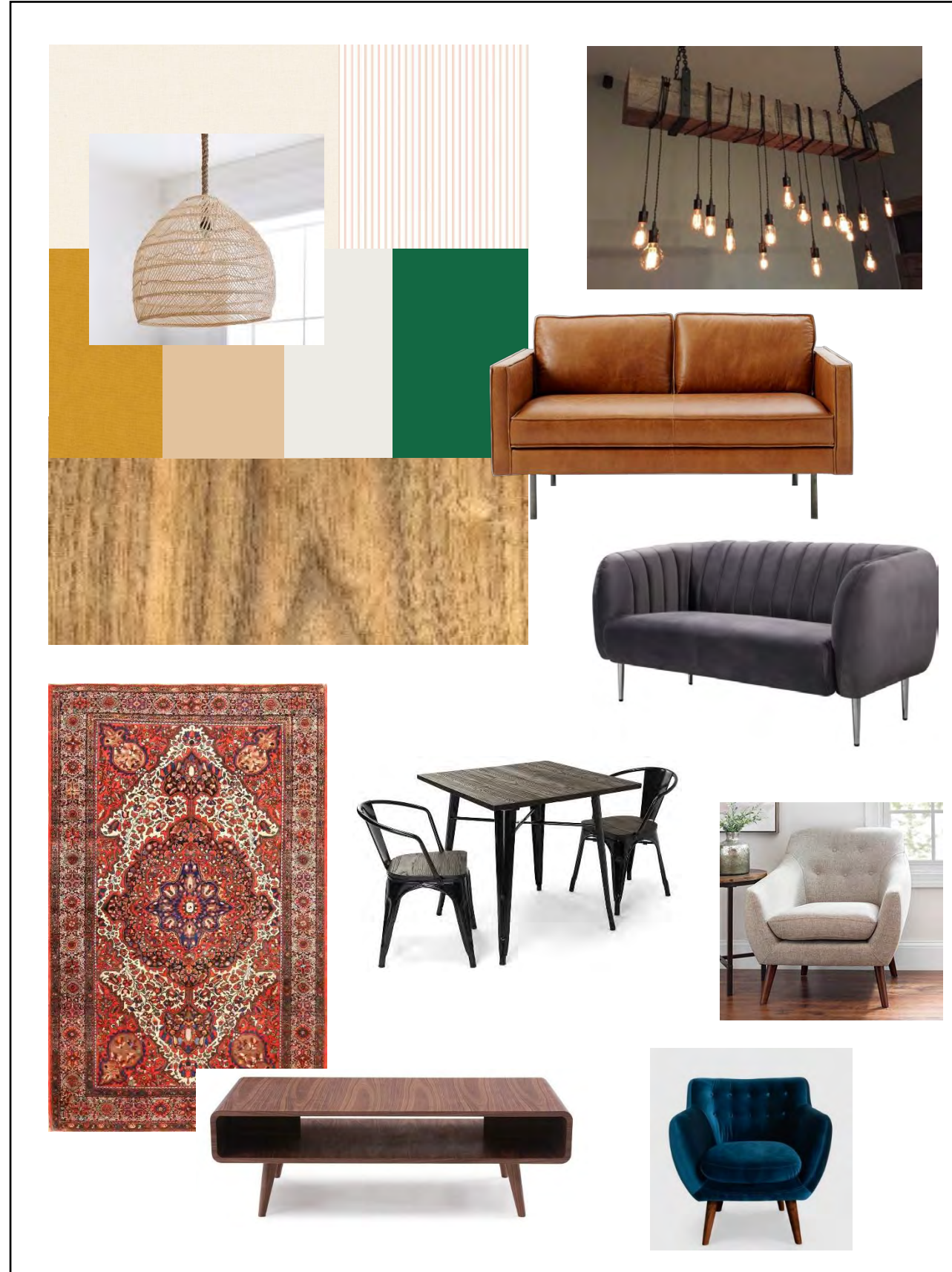
Concept

- Plant/green café concept.
- Touches of historic Greenville and its agricultural background.
- Mix of formal seating and lounge seating.
- Greenery and white walls at the base of the concept.
- Elements that match the busy and fast-paced lifestyle of the target market.
- Minimalist and neutral walls/floors/doors.
- Cozy and open concept.
- Greenery ties into sustainability of design/program.



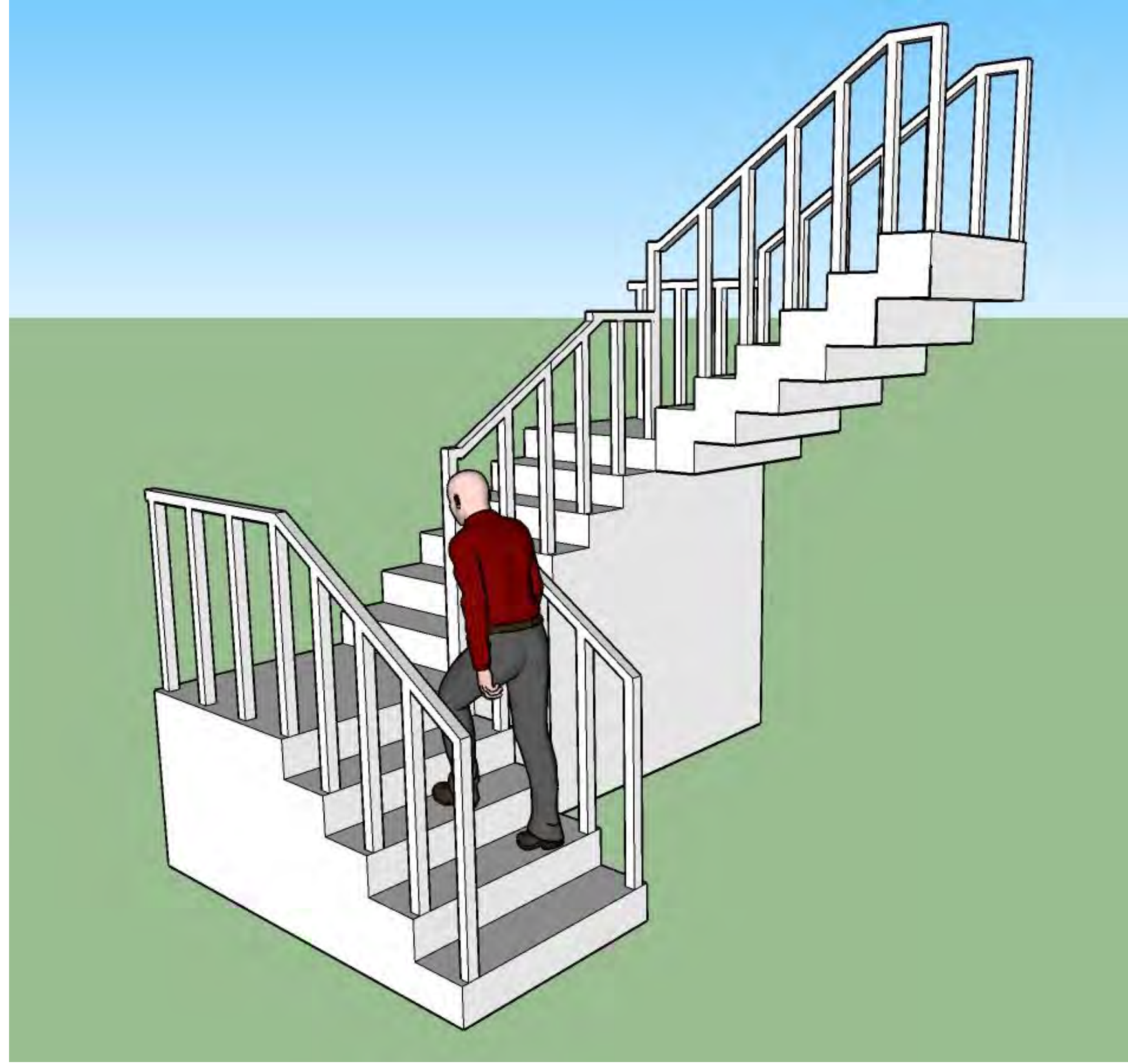
Color Rationale

- Color scheme will be neutral base with an emphasis on greenery.
- Neutral furniture with a few colorful pieces for variety.
- Colors like tan, beige, off white, terracotta, etc. will tie the agricultural background of Greenville into the design.
- Pops of color refer to the local flora,
- Low/natural lighting will contribute to the mood that the colors create.



Assignment 10-
Final Stair Model

Final Stair Model



Anna Stewart

IDSN 2102 F20

Assignment 11 & 12-
Model Scenes

Scene 1



Anna Stewart

IDSN 2102 F20

Assignment 11 & 12-

Model Scenes

Scene 2



Anna Stewart

IDSN 2102 F20

Assignment 11 & 12-

Model Scenes

Scene 3



Anna Stewart

IDSN 2102 F20

Assignment 11 & 12-

Model Scenes

Scene 4



Anna Stewart

IDSN 2102 F20

Assignment 11 & 12-

Model Scenes

Scene 5



Anna Stewart

IDSN 2102 F20