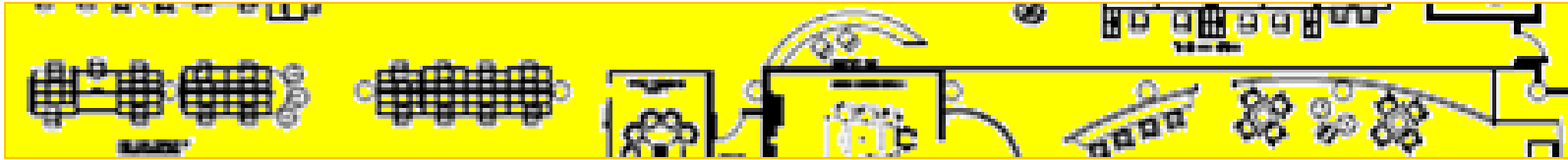


PORTFOLIO TWO



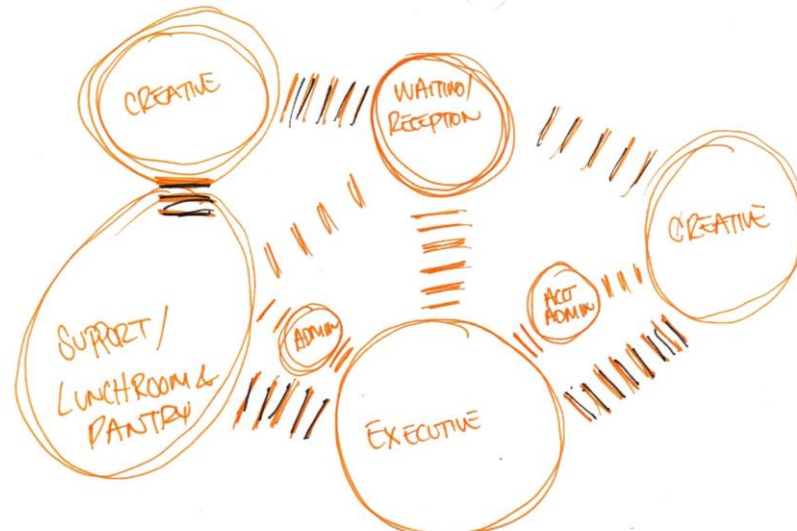
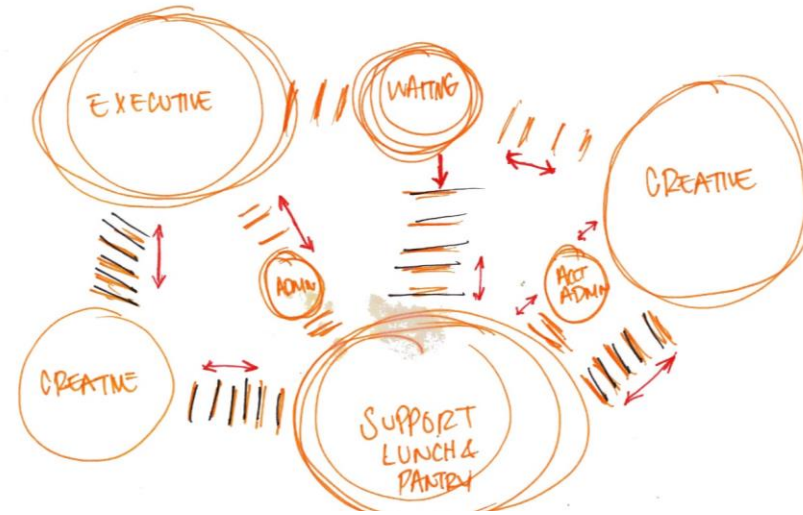
Toyin Adebisi

IDSN 3600

Interior Design III Systems

Fall 2014

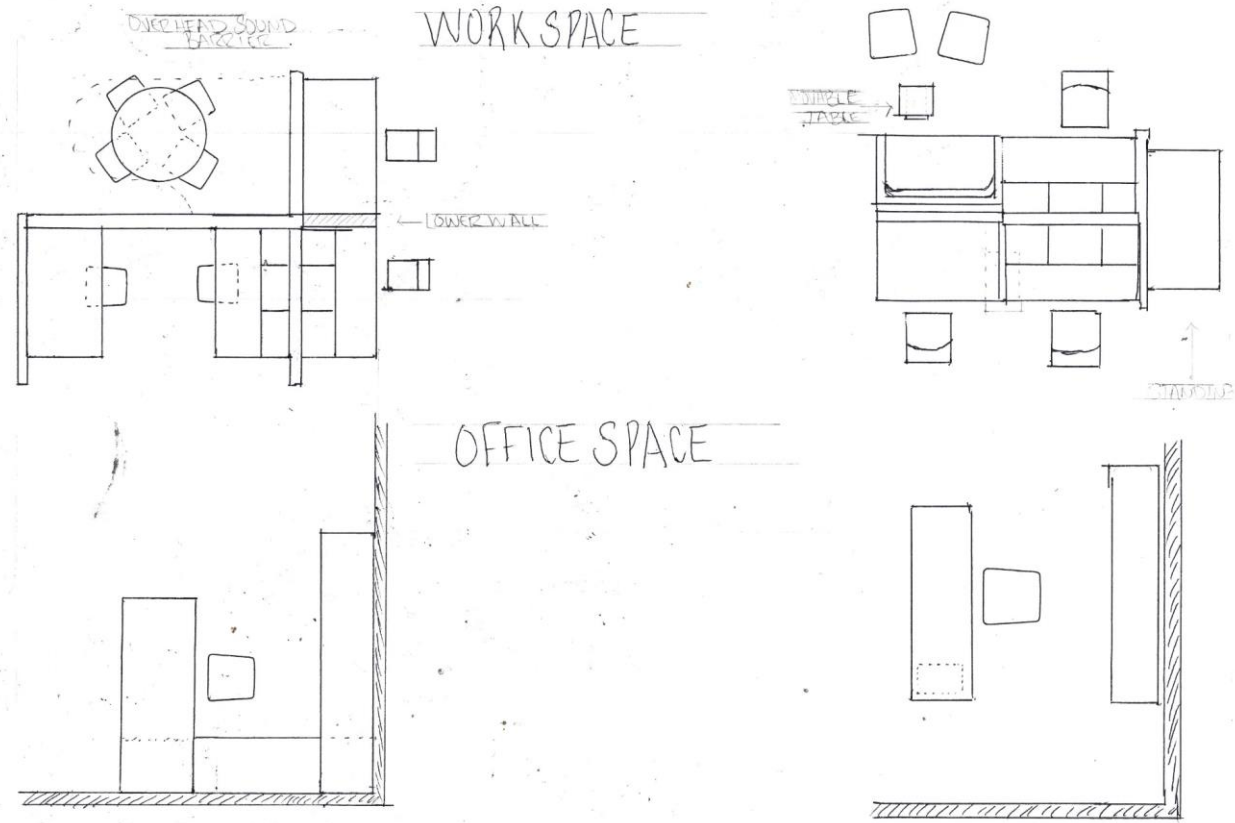
Bubble Diagrams



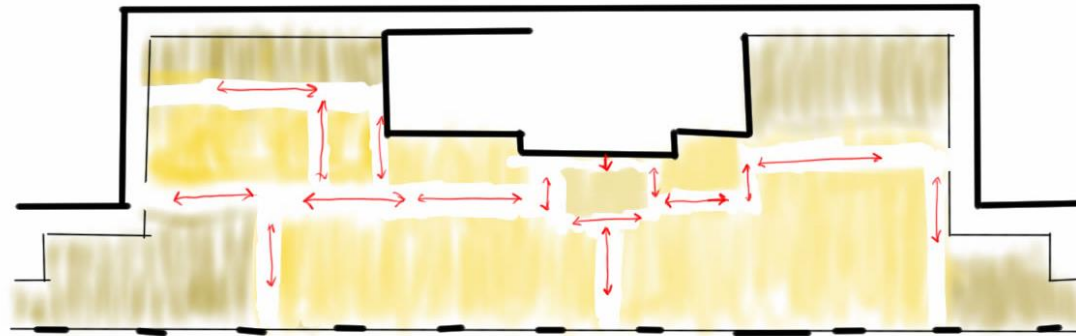
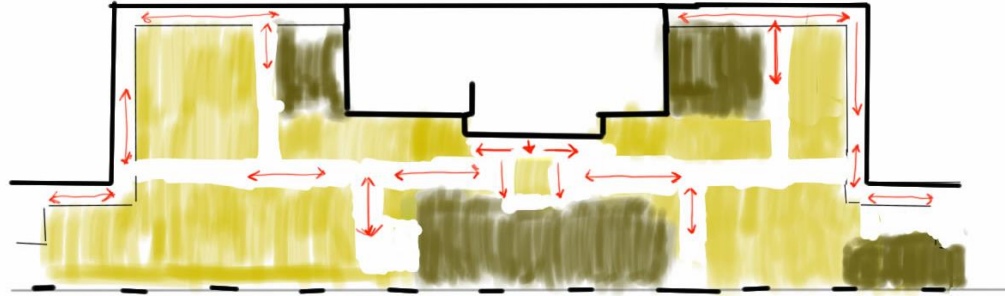
Block Diagrams



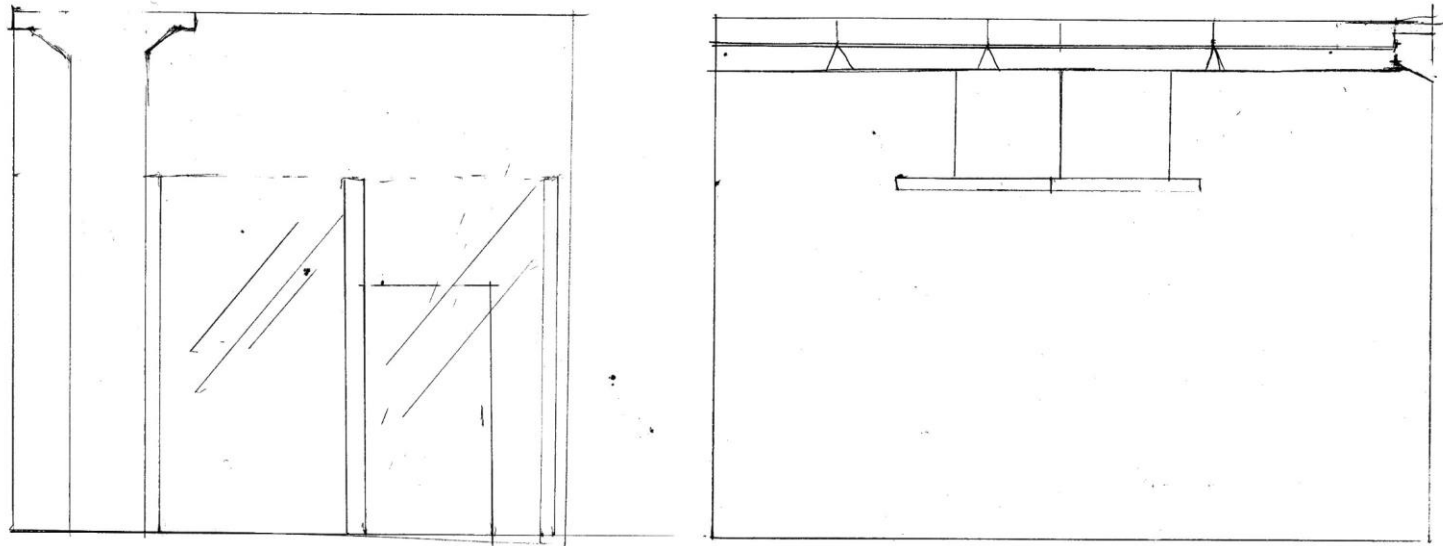
Space Standard Drawings



Space Standard Drawings

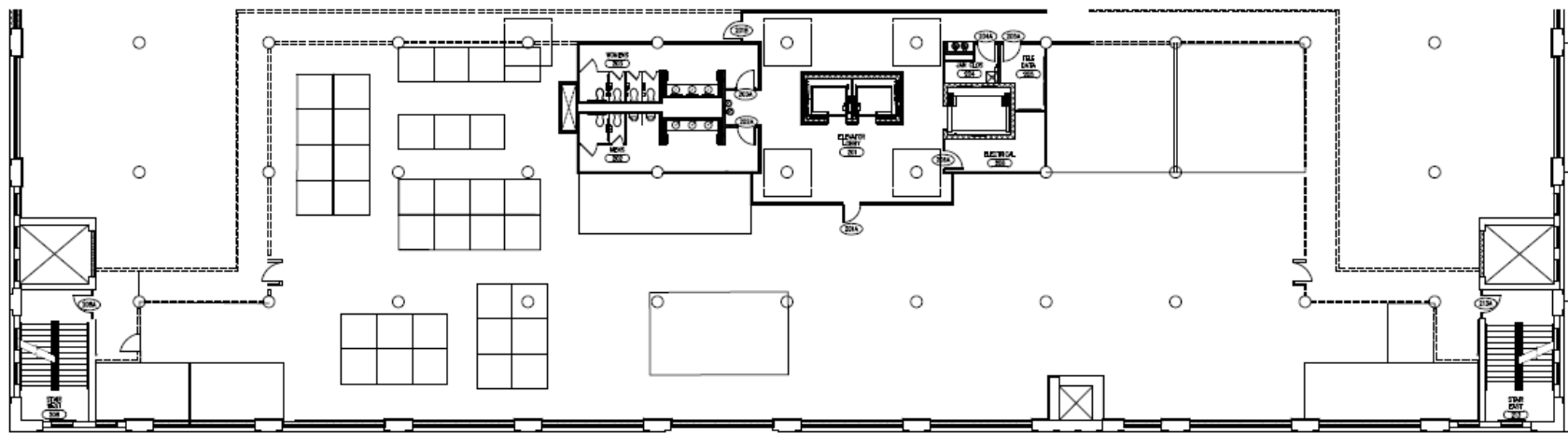
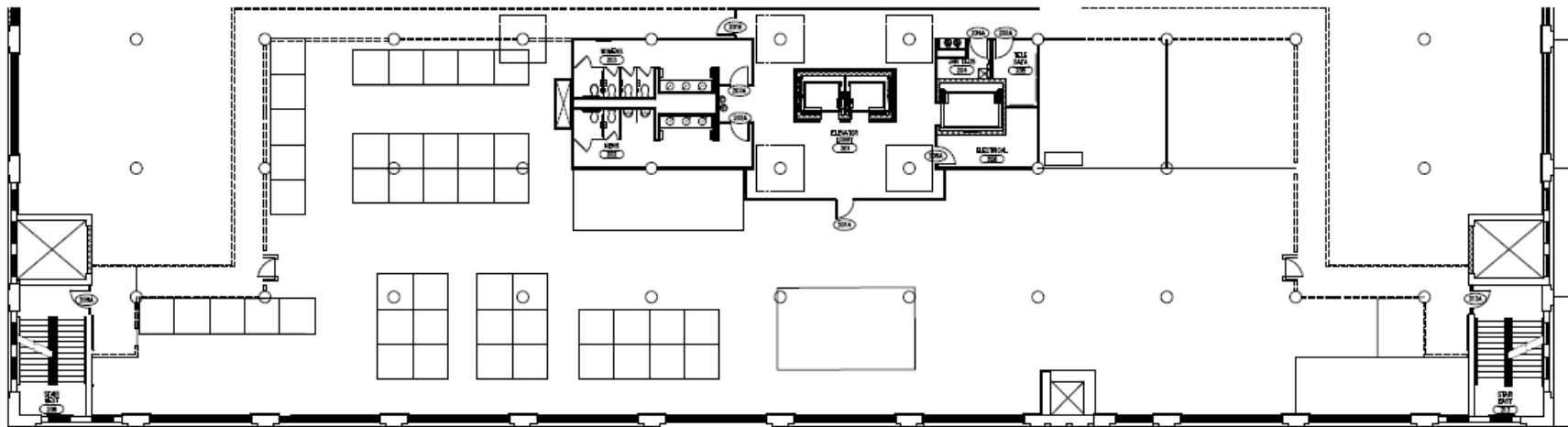


Section Sketches



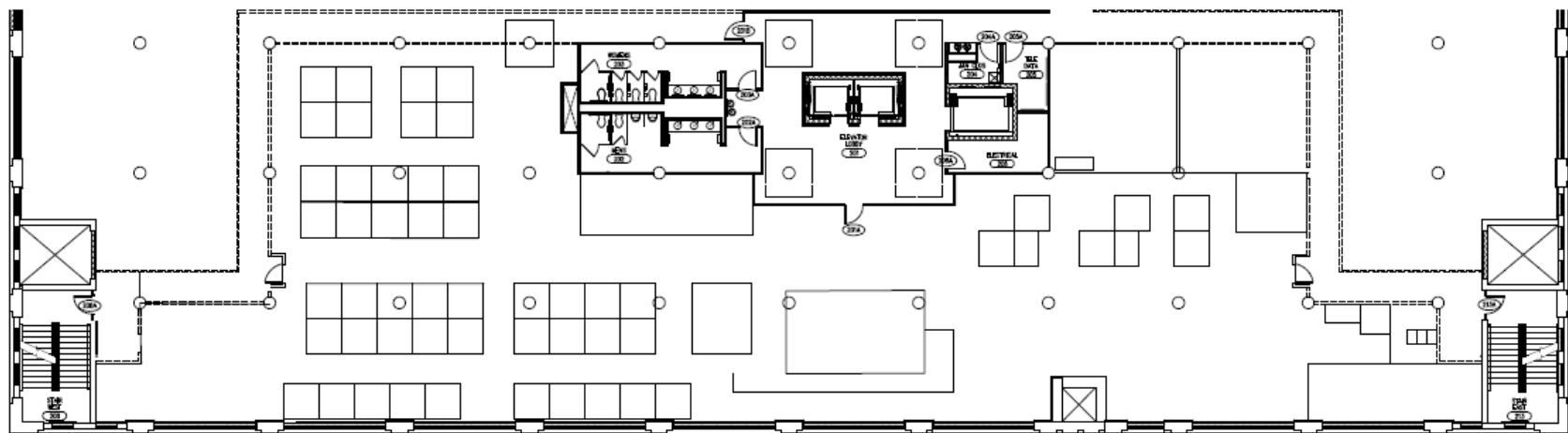
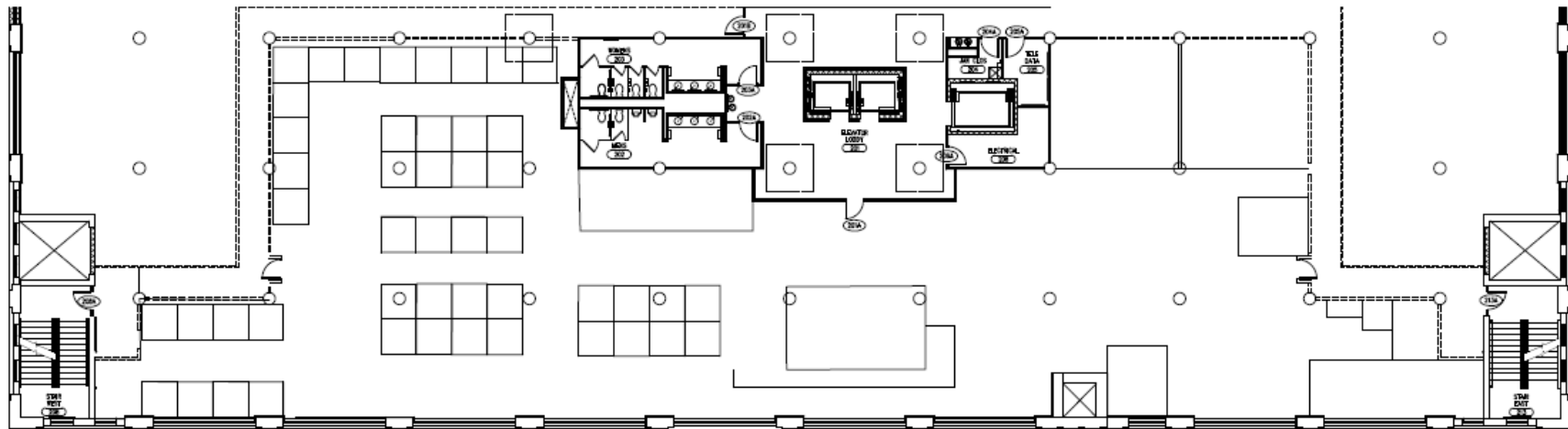


Space Planning

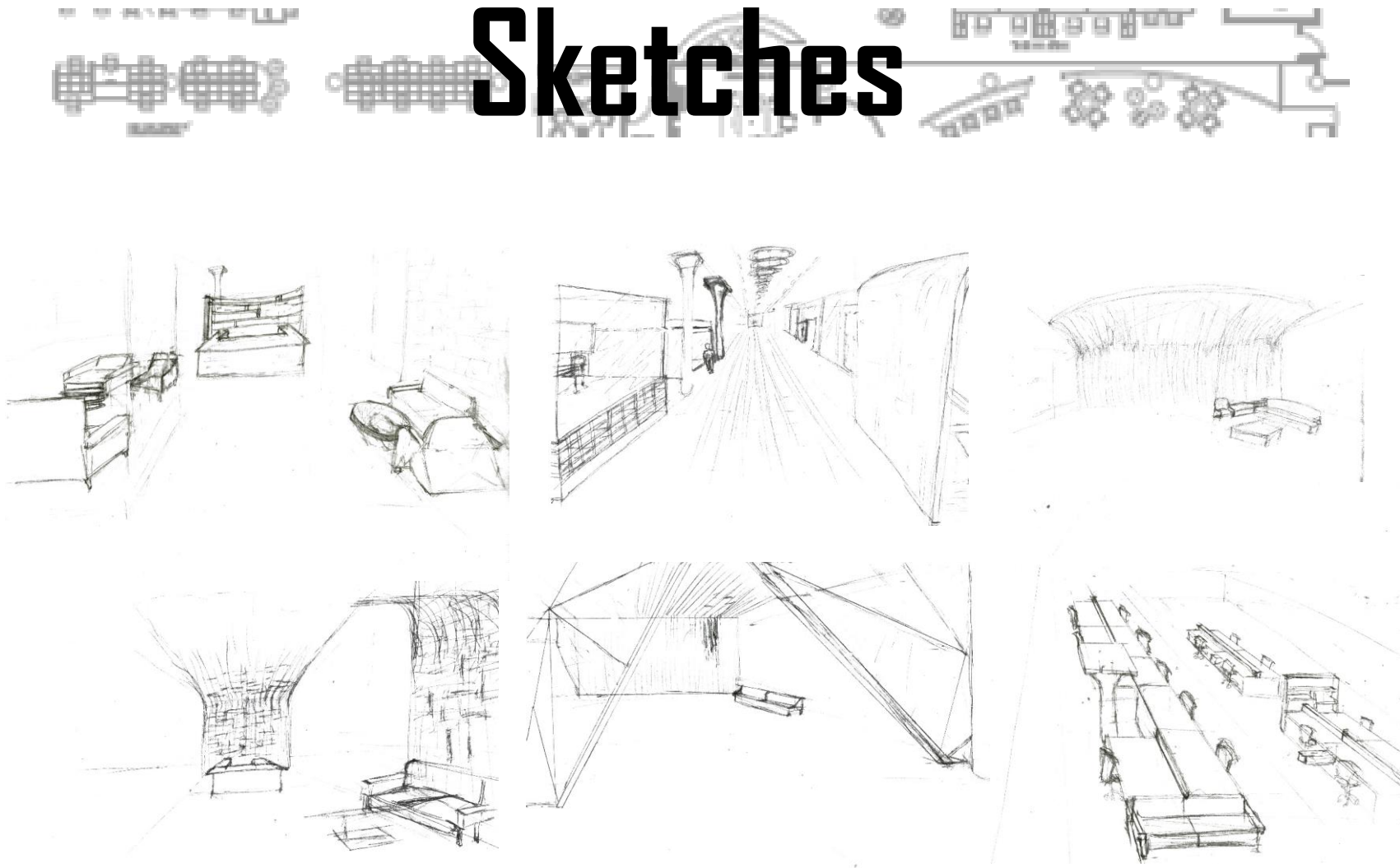




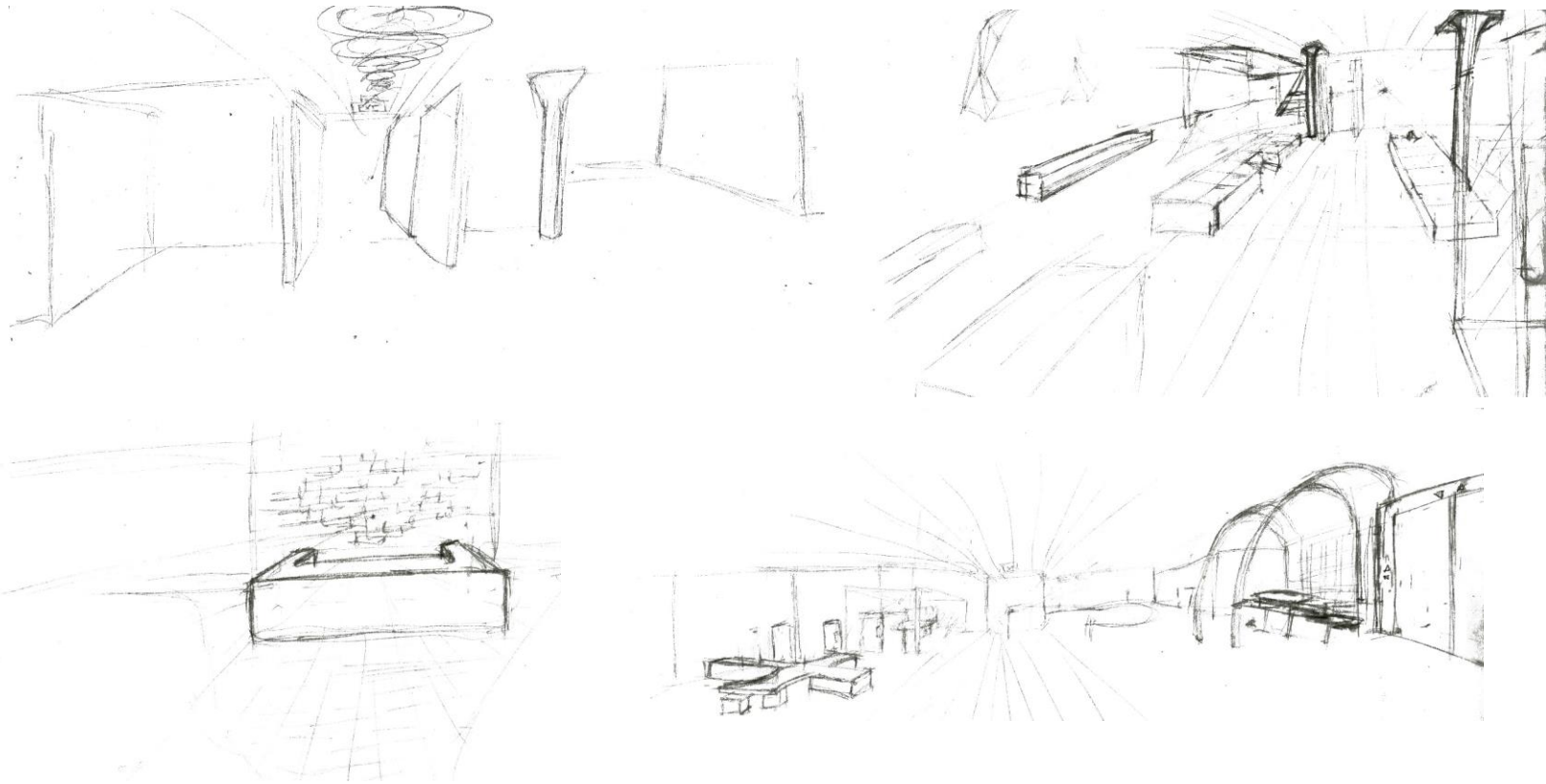
Space Planning



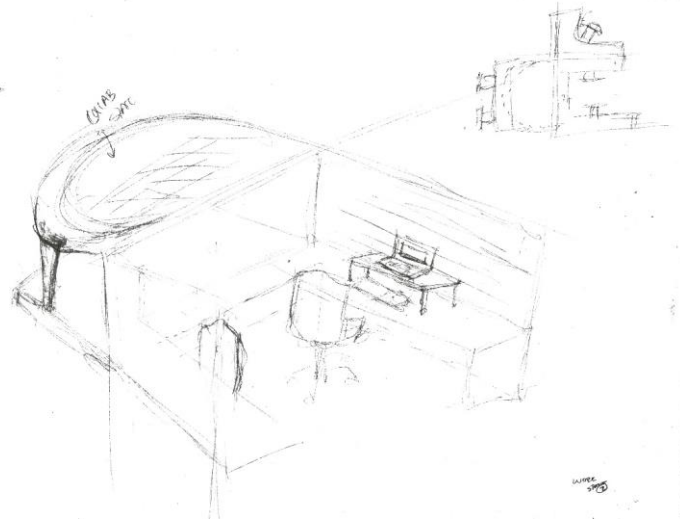
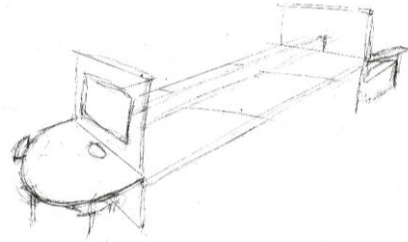
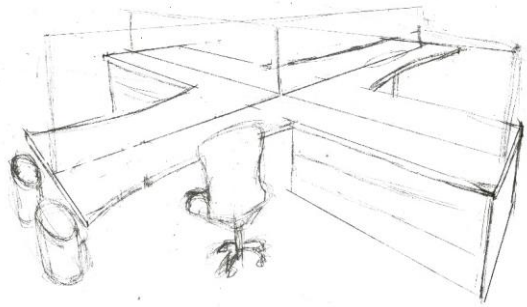
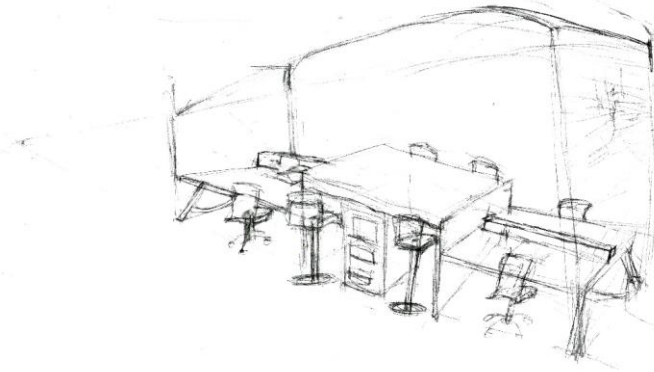
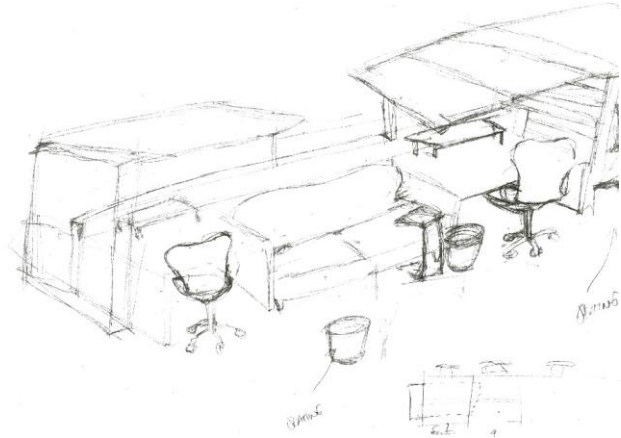
Sketches



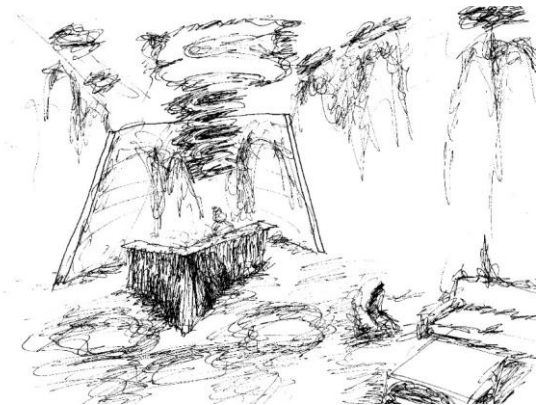
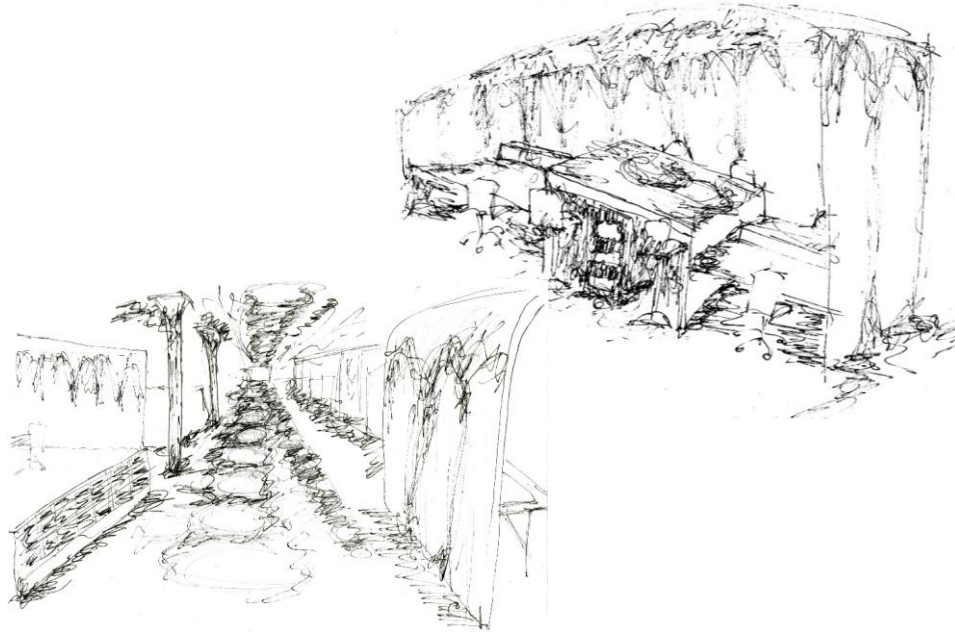
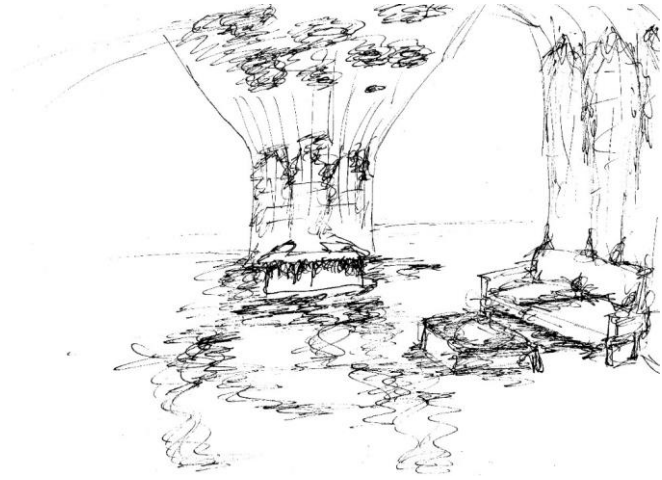
Sketches

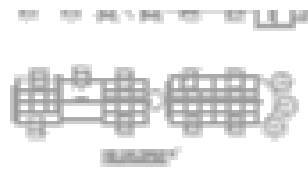


Sketches

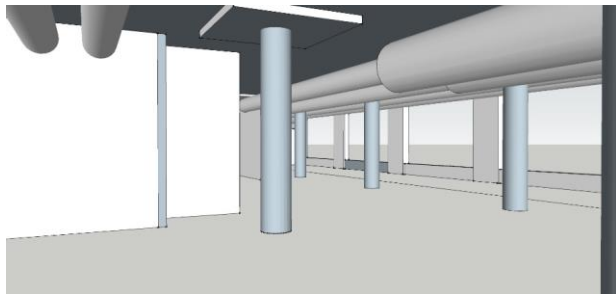
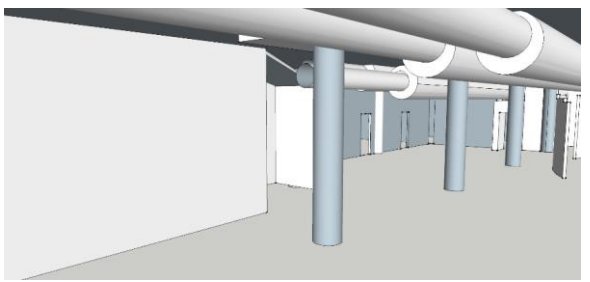
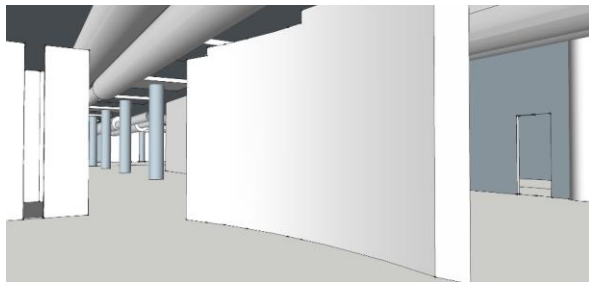
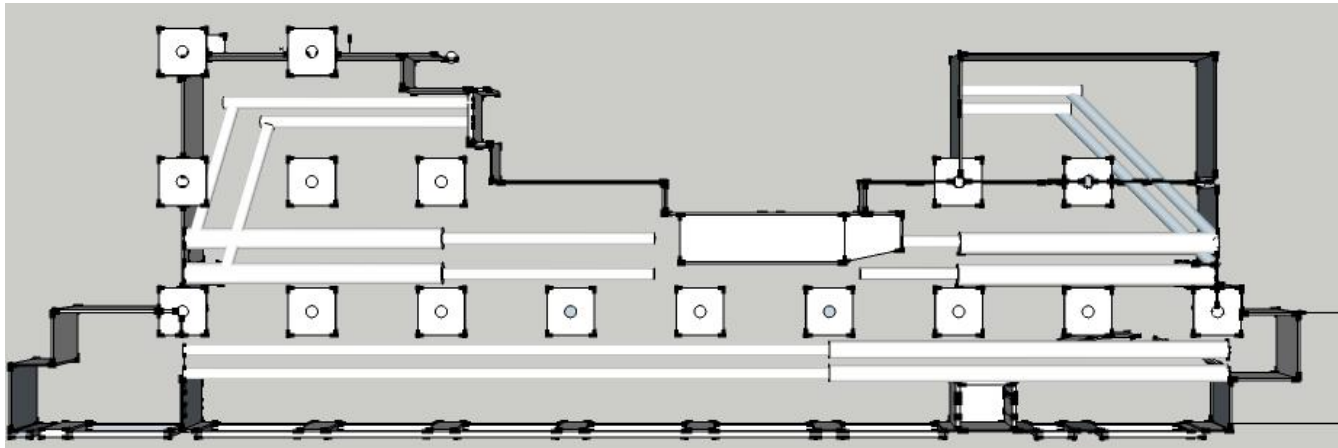


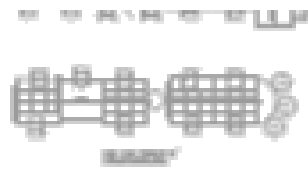
Light Sketches





Systems RCP





Lighting Model



Sustainability Statement

- Recycled Woods
- Recycled Carpets/Flooring
- Eco-Friendly Lighting
- Embodied energy

Adaptive reuse of Building

The materials will not just be previously recycled, but can also be broken down and re-used when carpet needs to be changed with the idea of Cradle to Cradle

