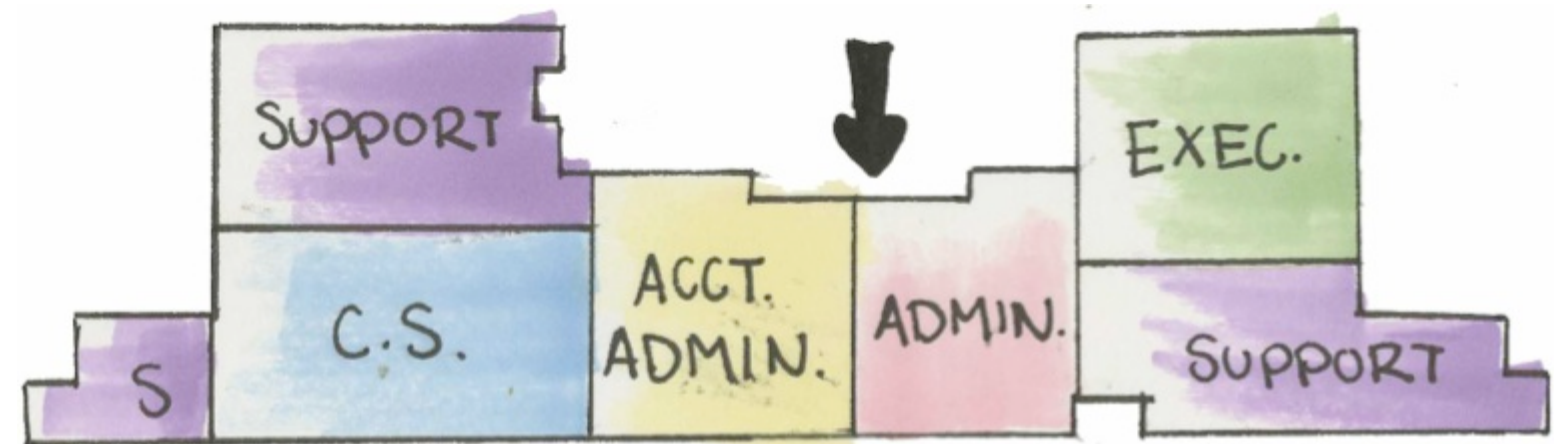
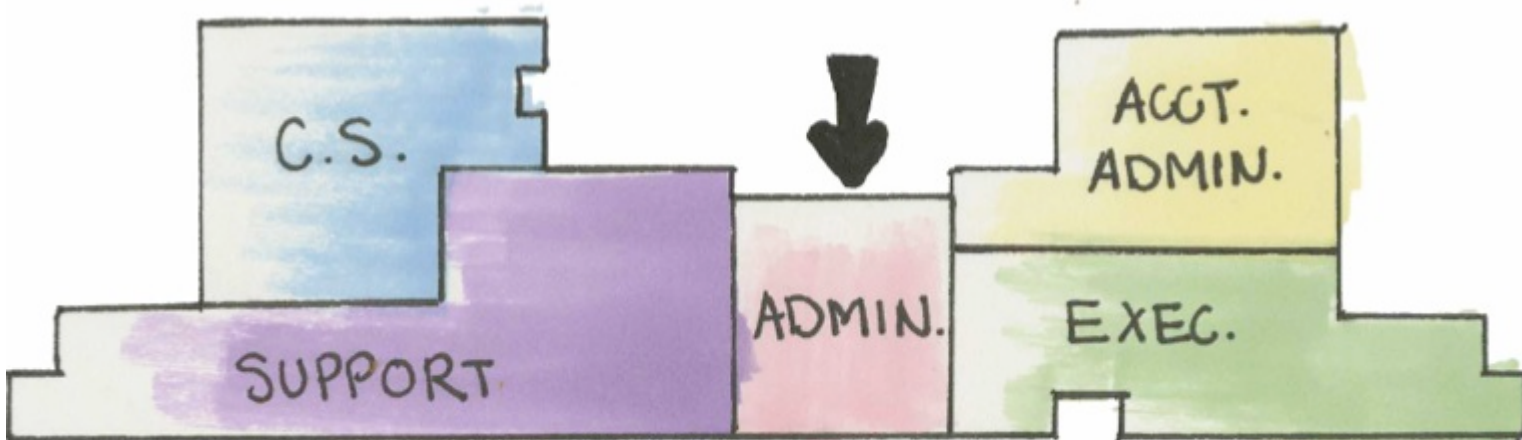
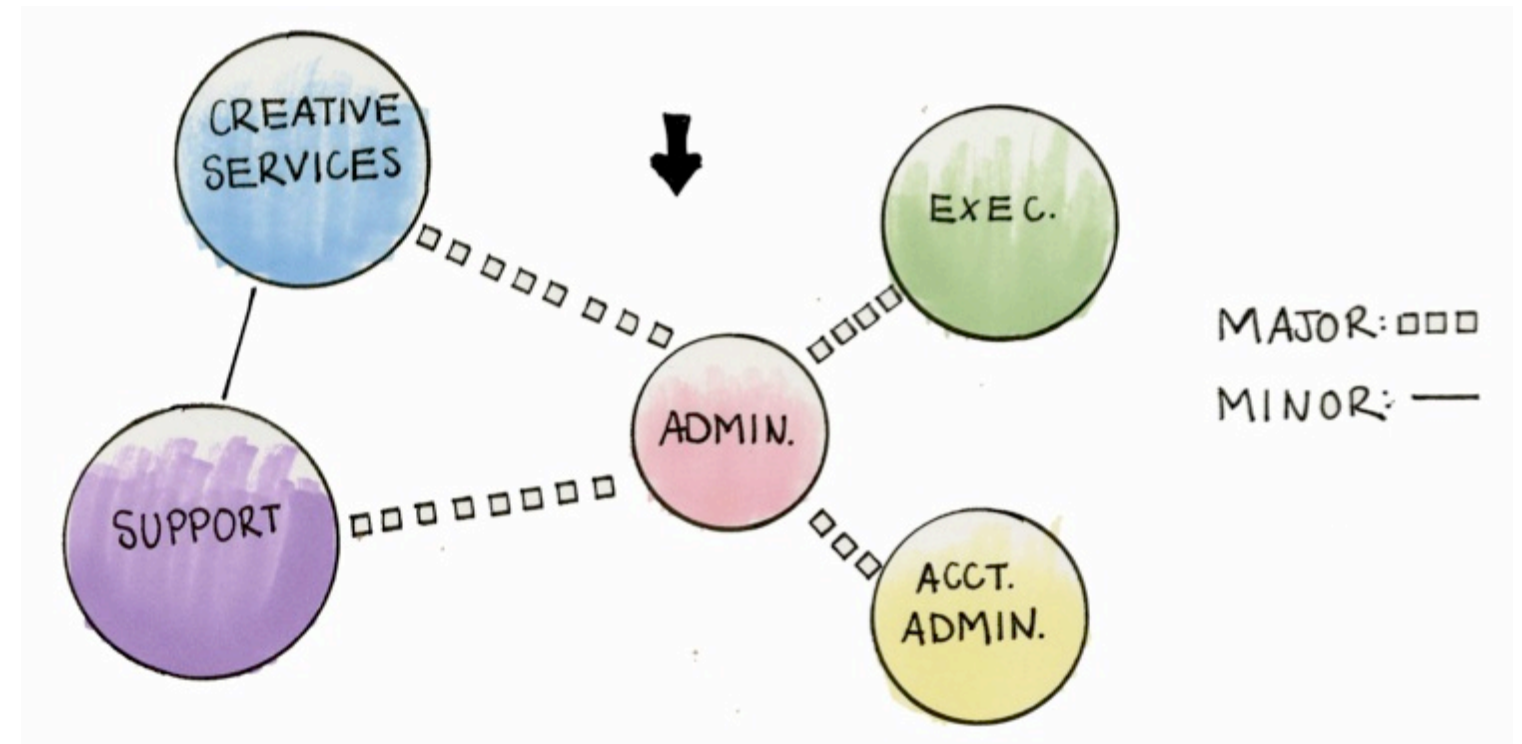
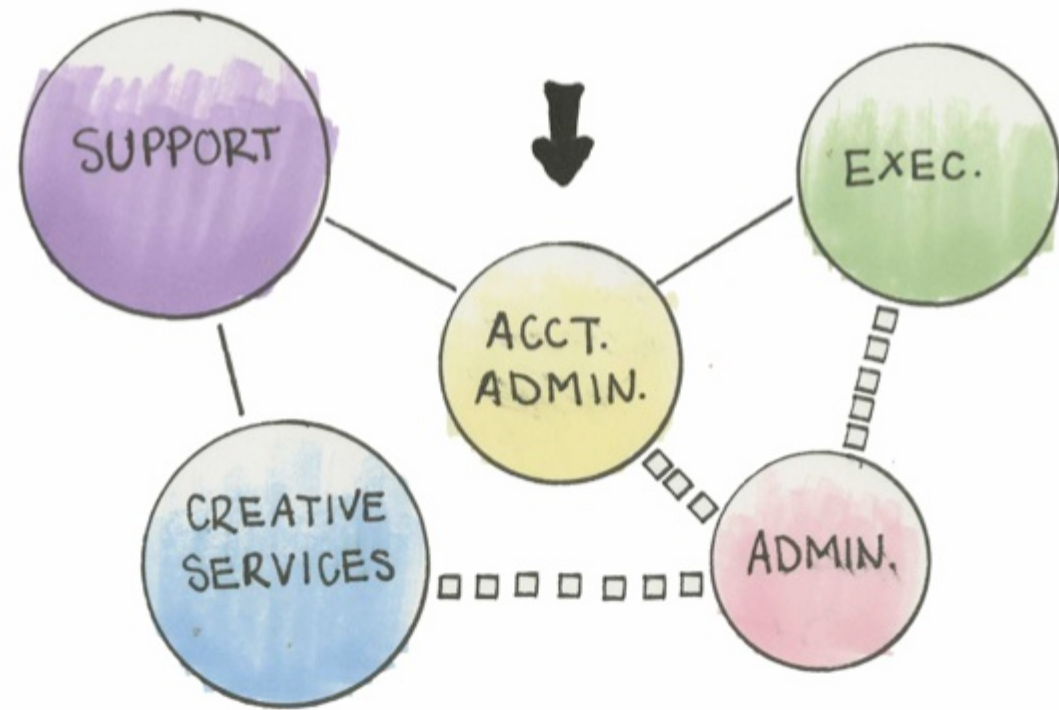


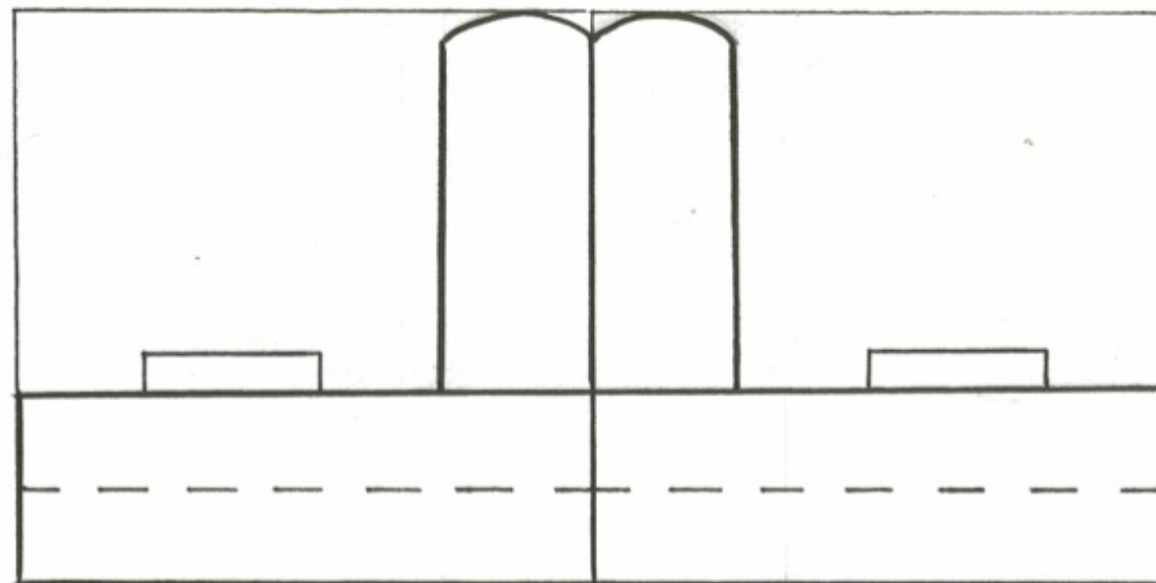
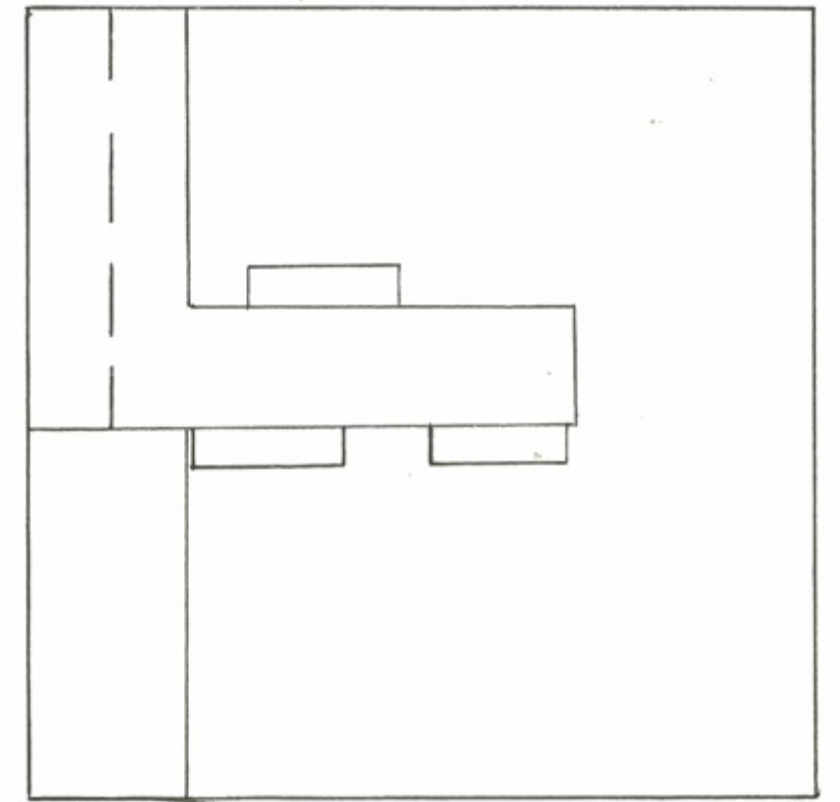
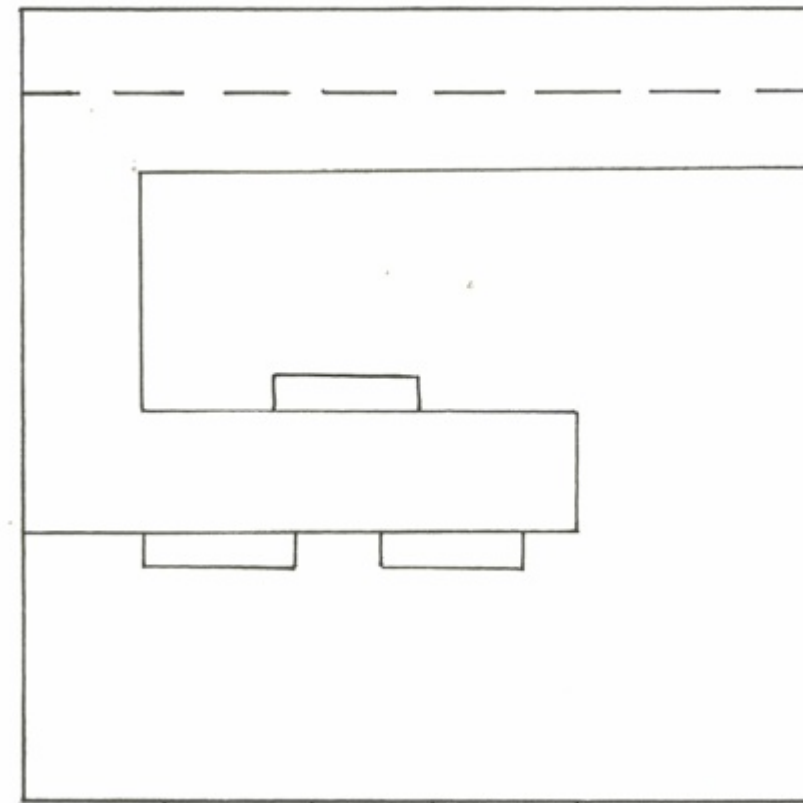
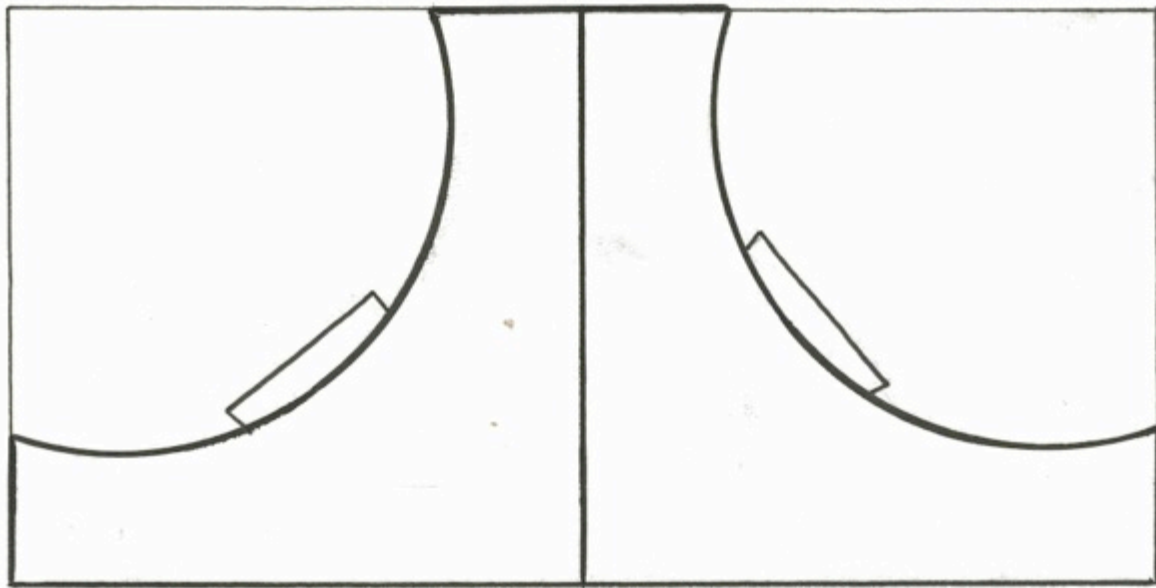
PORTFOLIO II

ALLISON BROUILLETTE

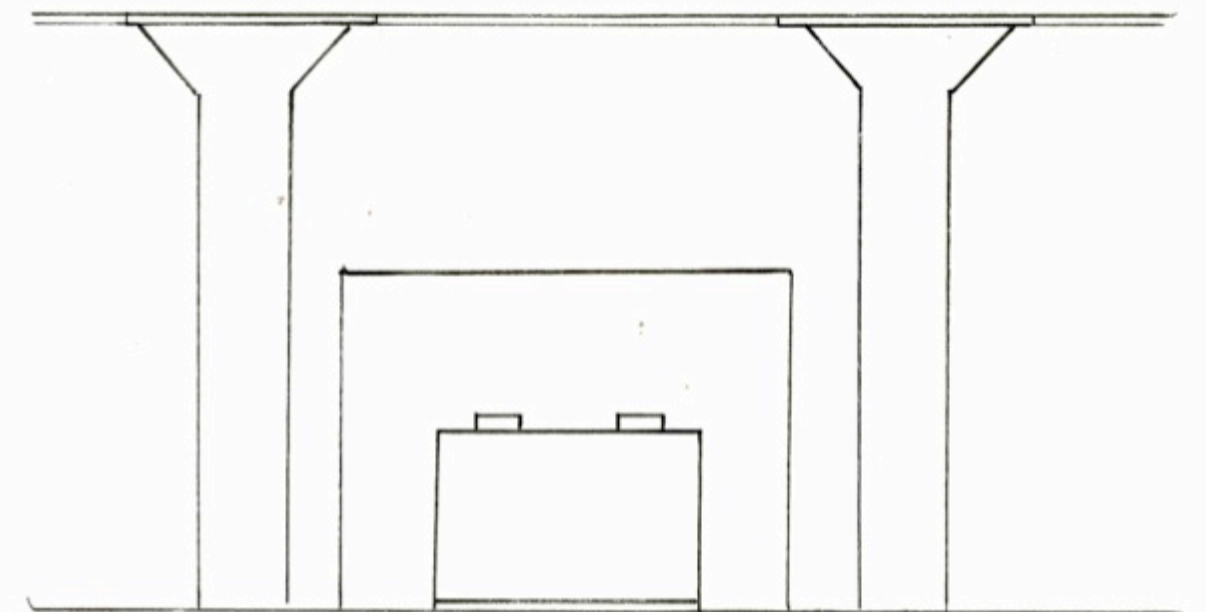
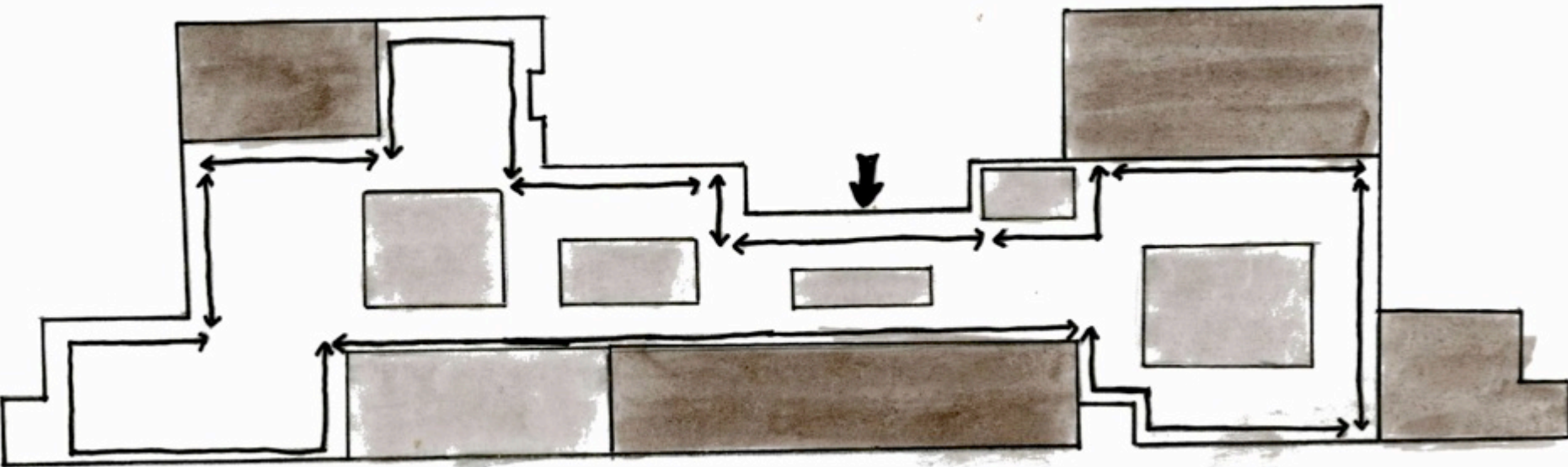
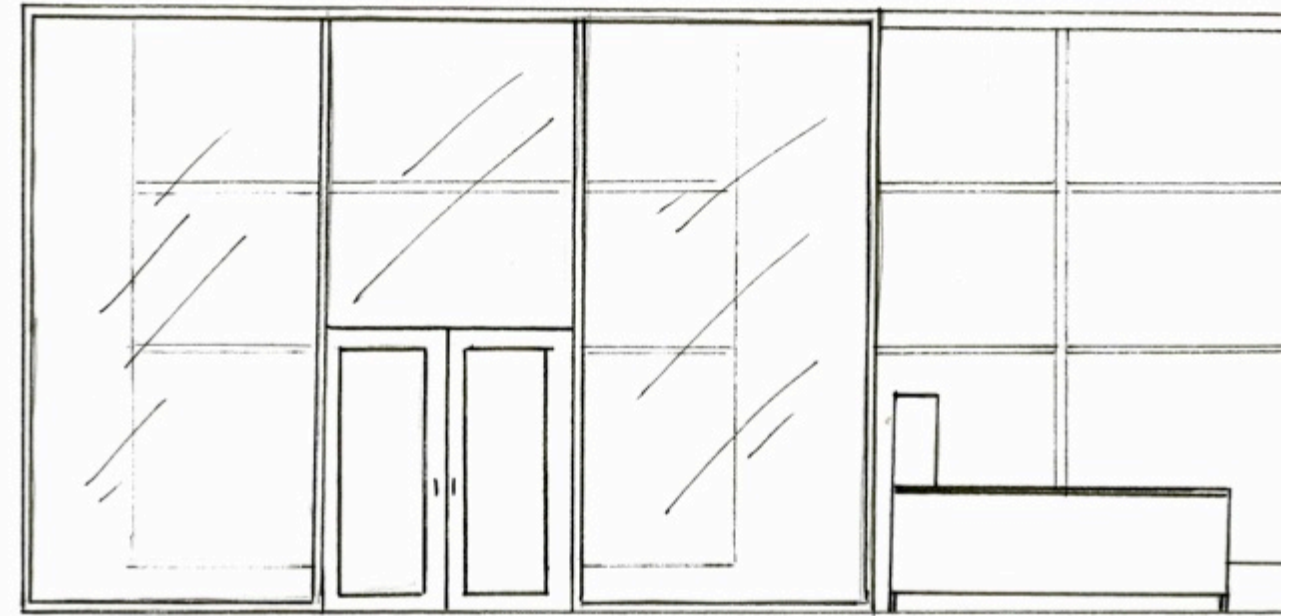
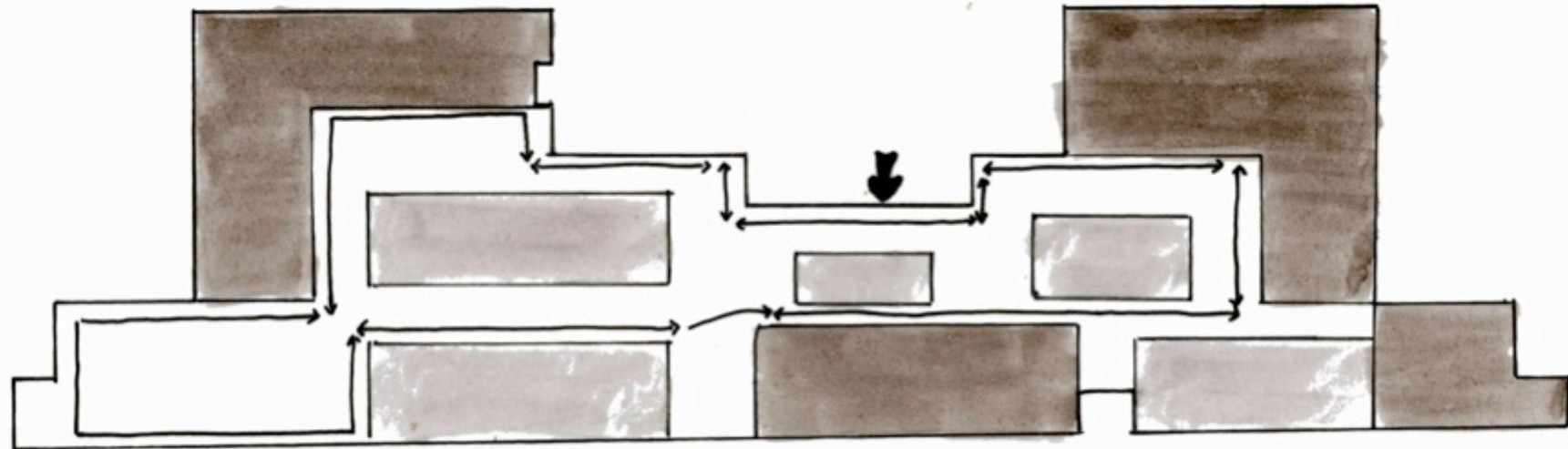
Bubble & Block Diagrams



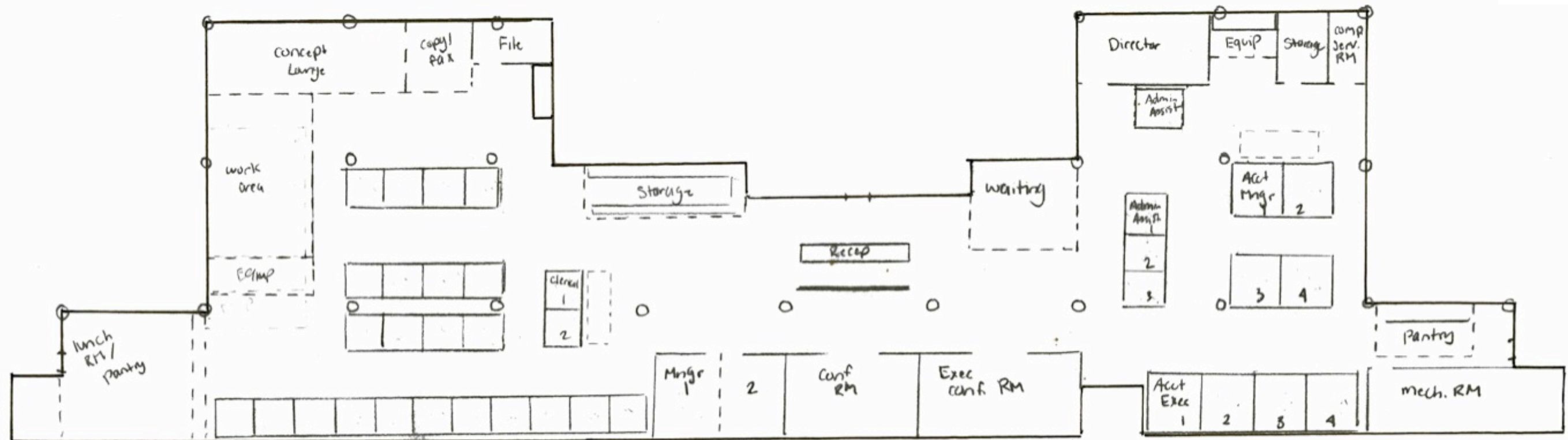
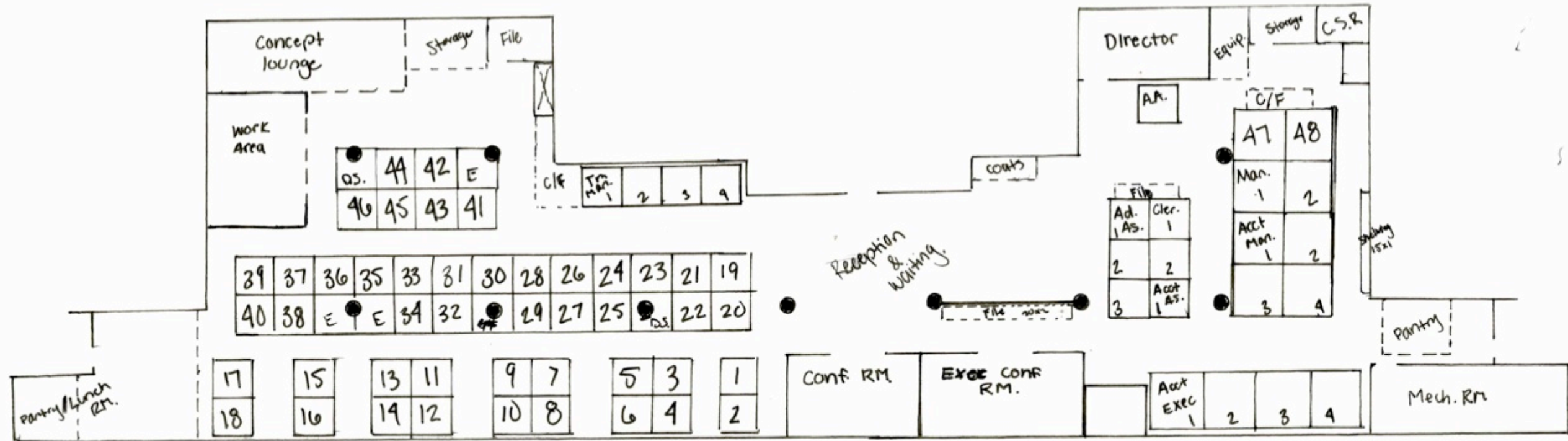
Workstation & Office Sketches

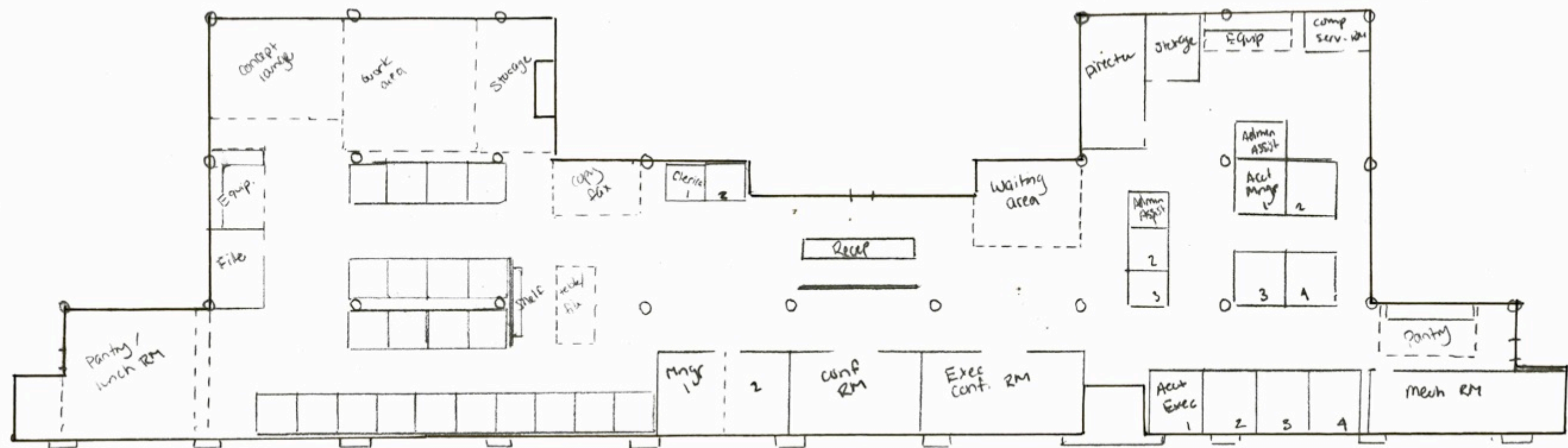
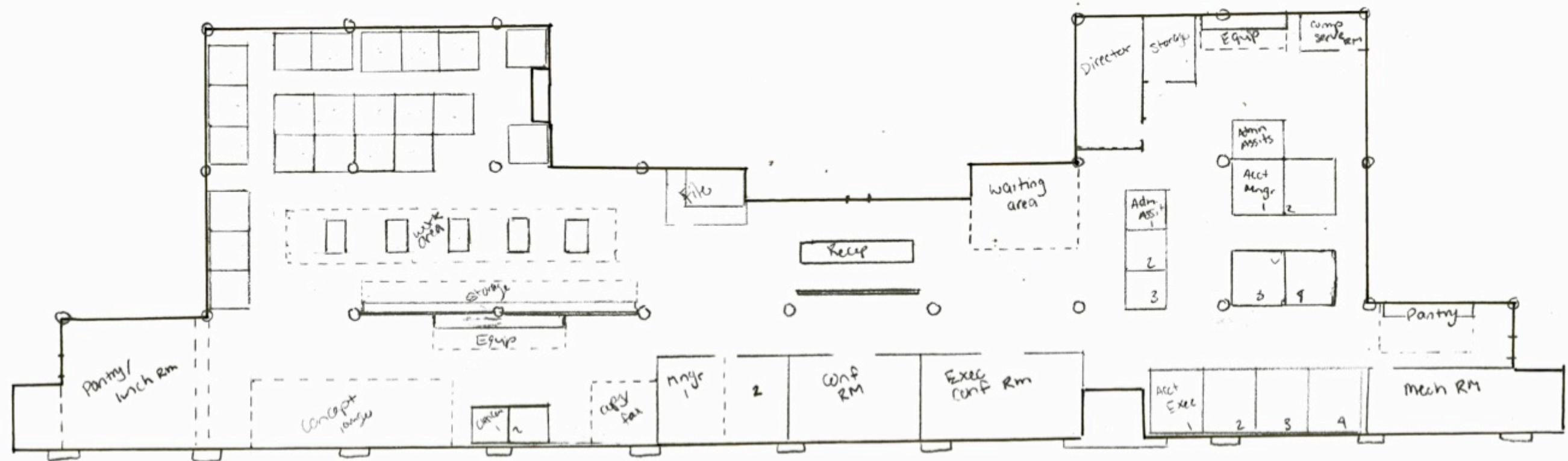


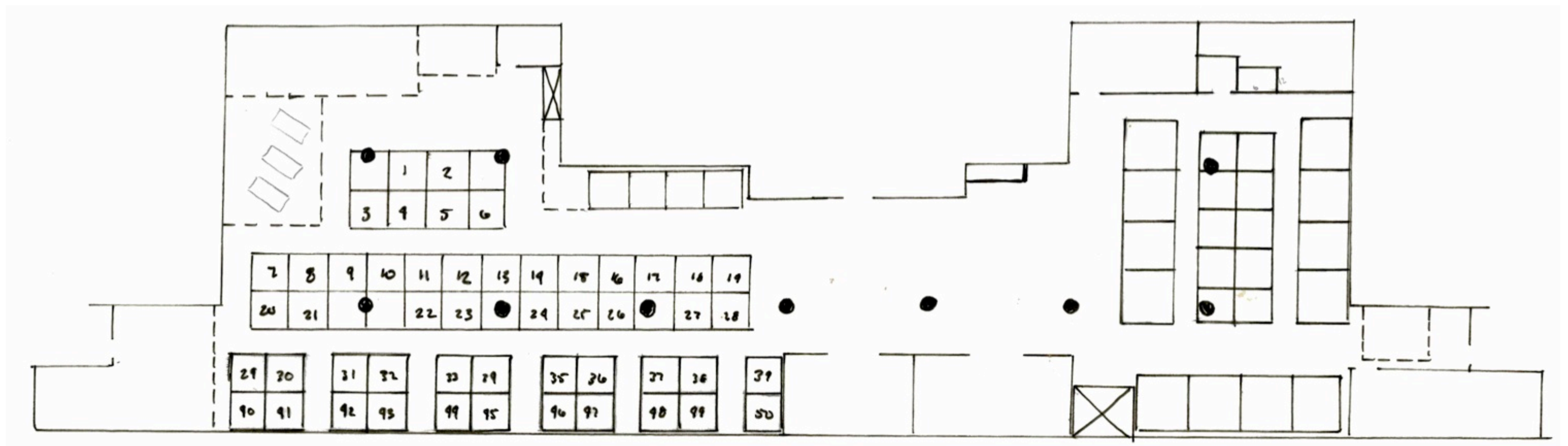
Spatial Concept & Section Sketches



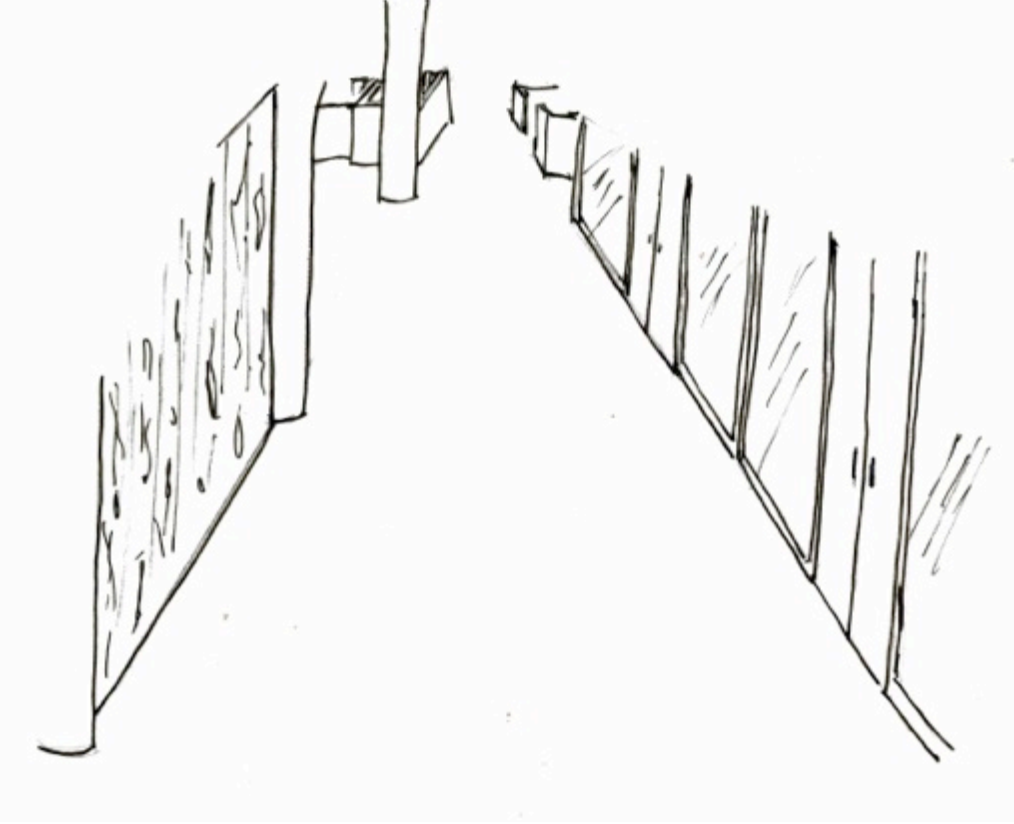
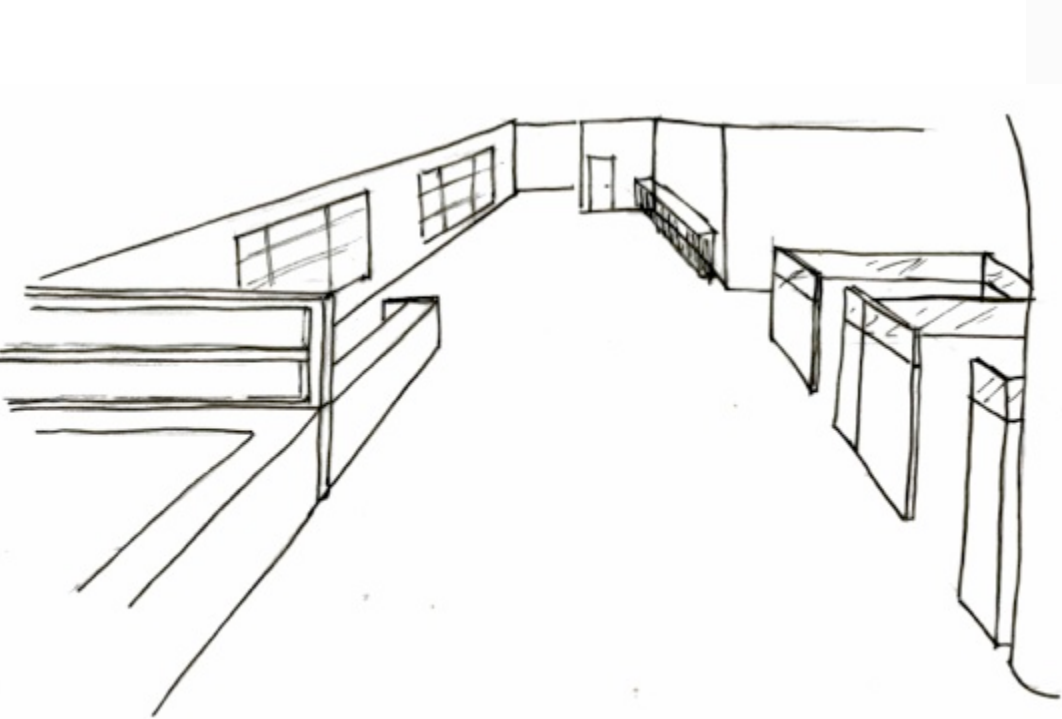
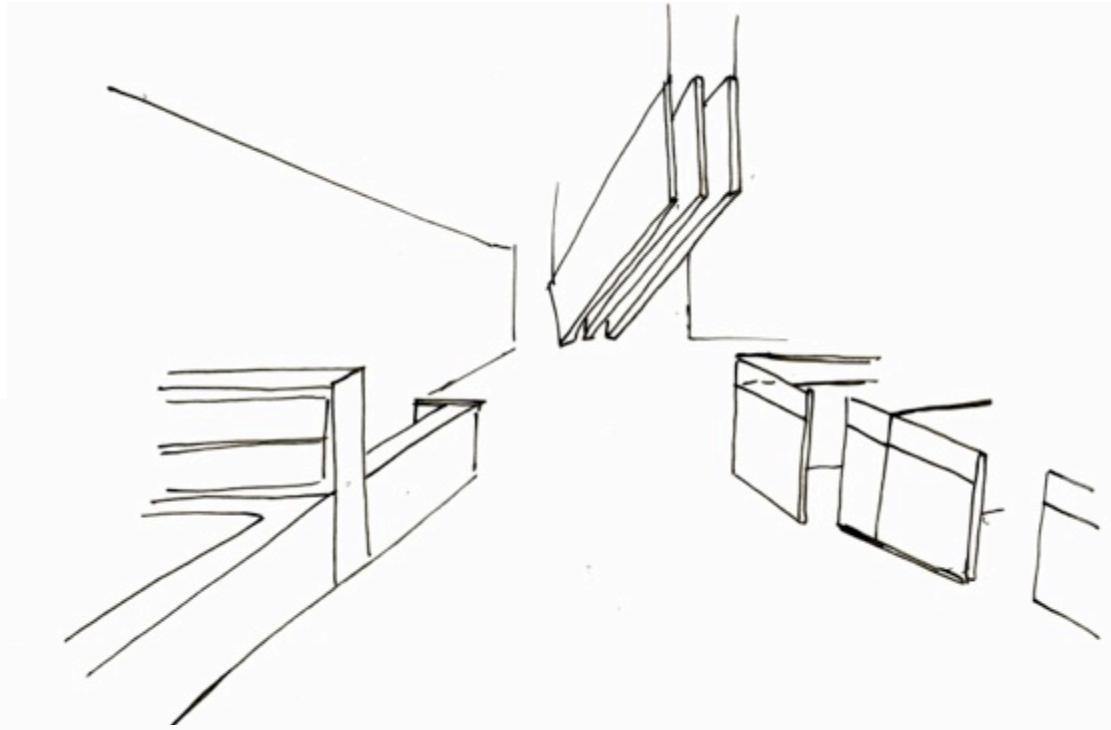
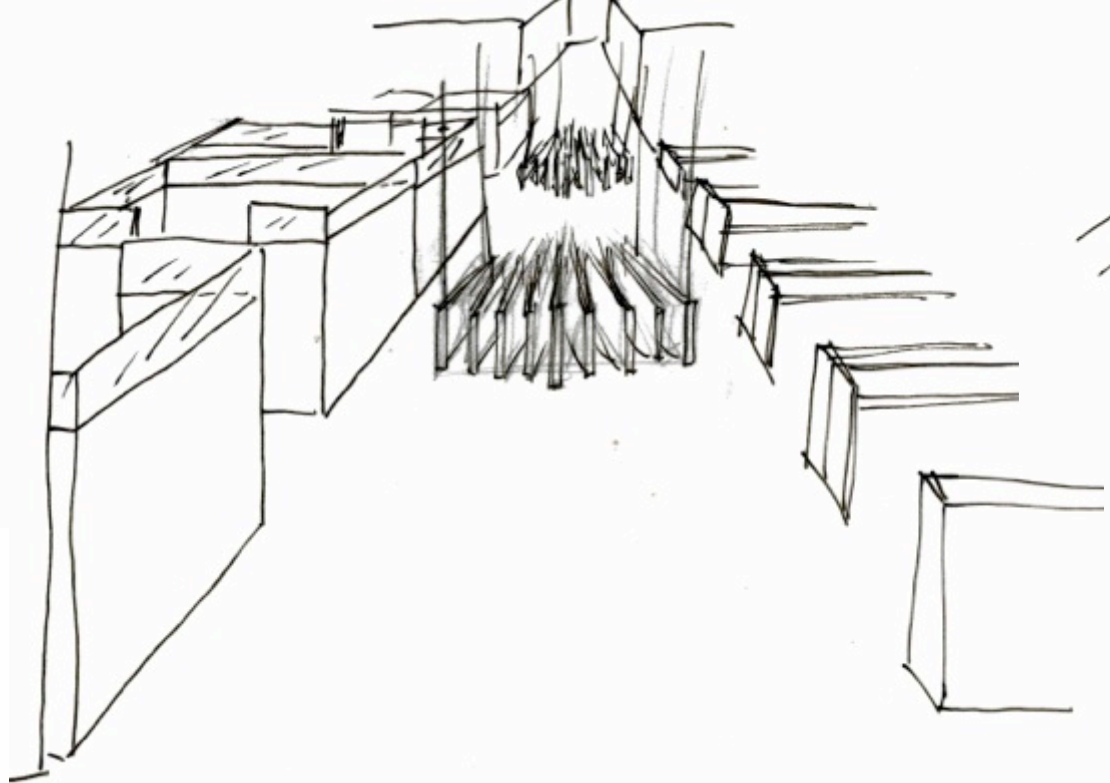
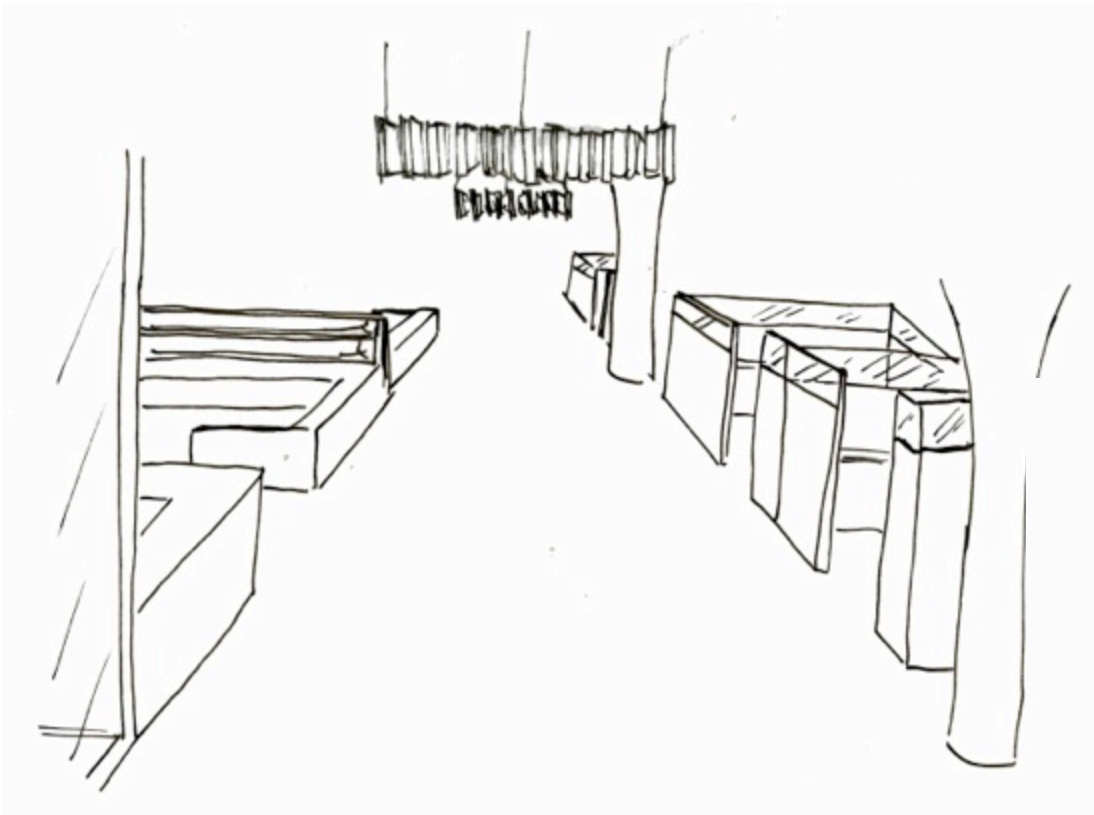
Space Planning



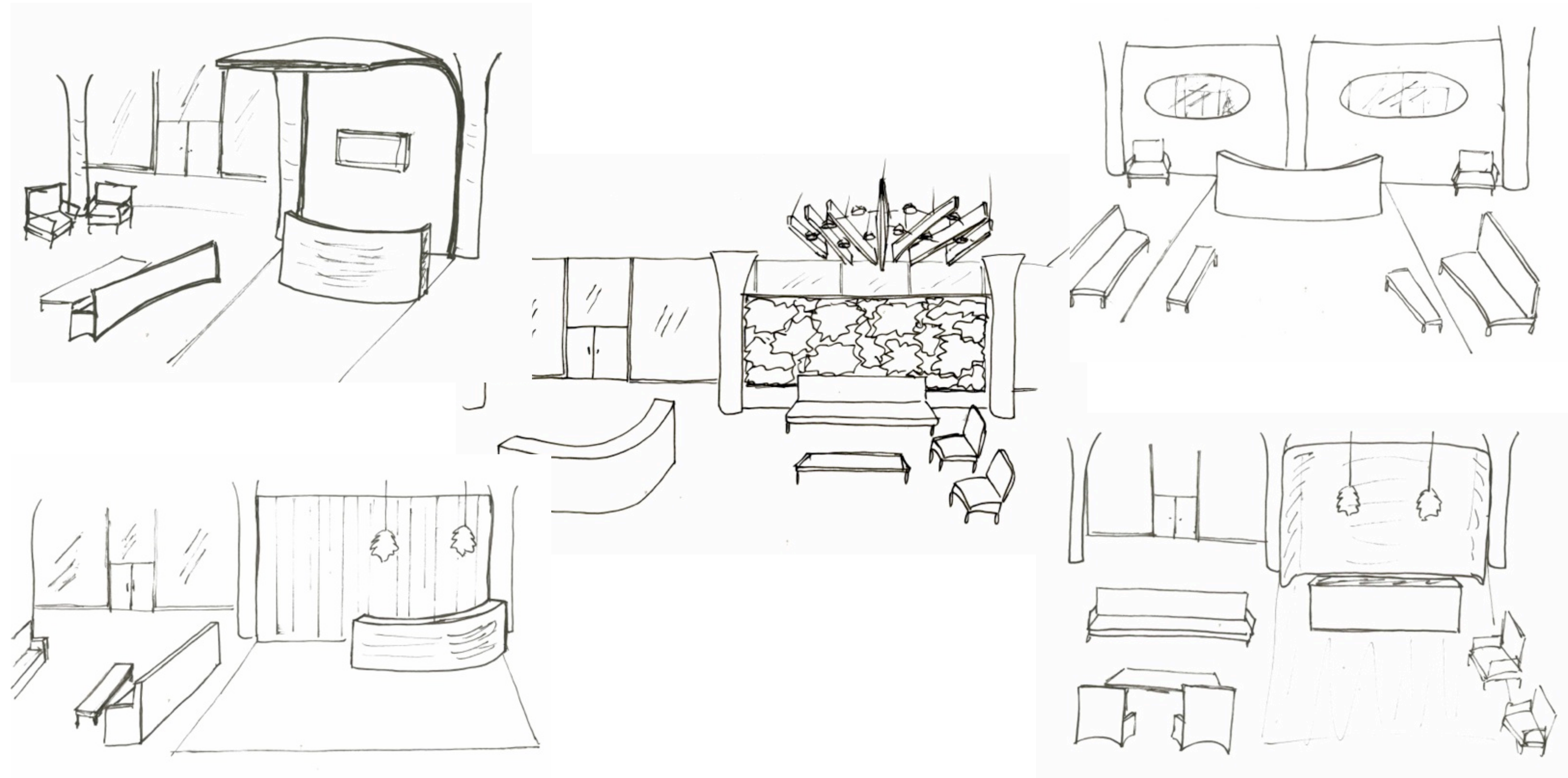




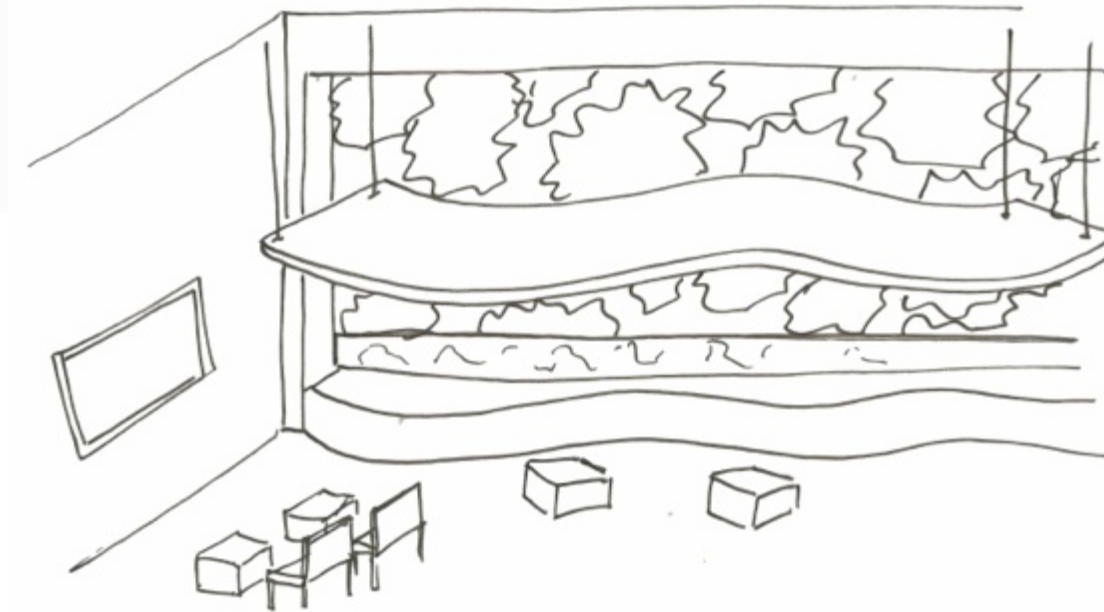
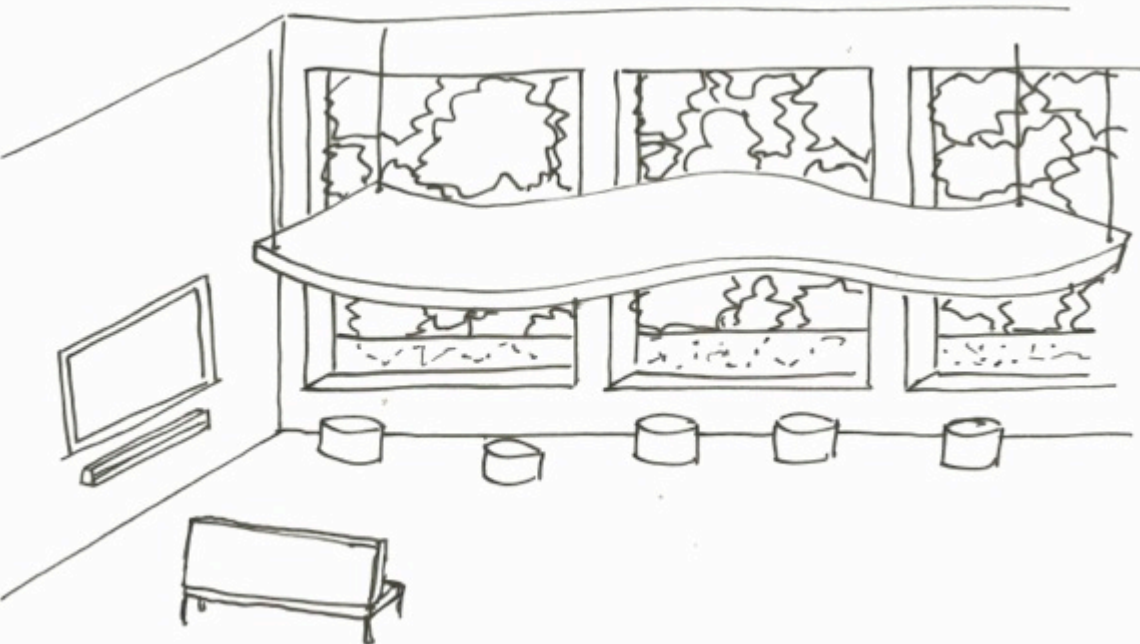
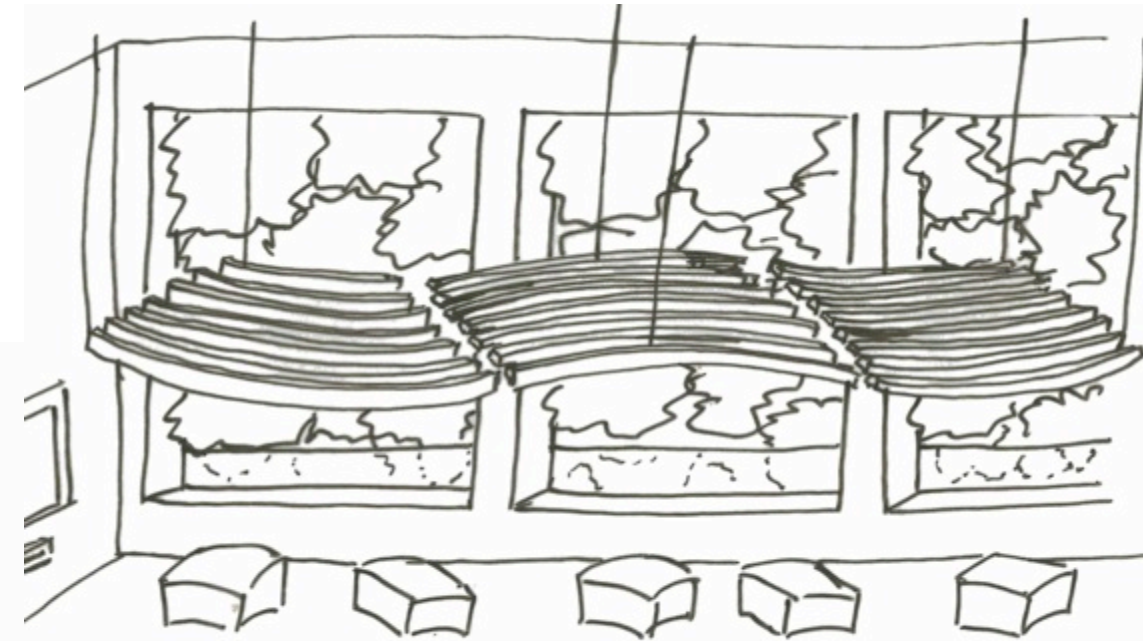
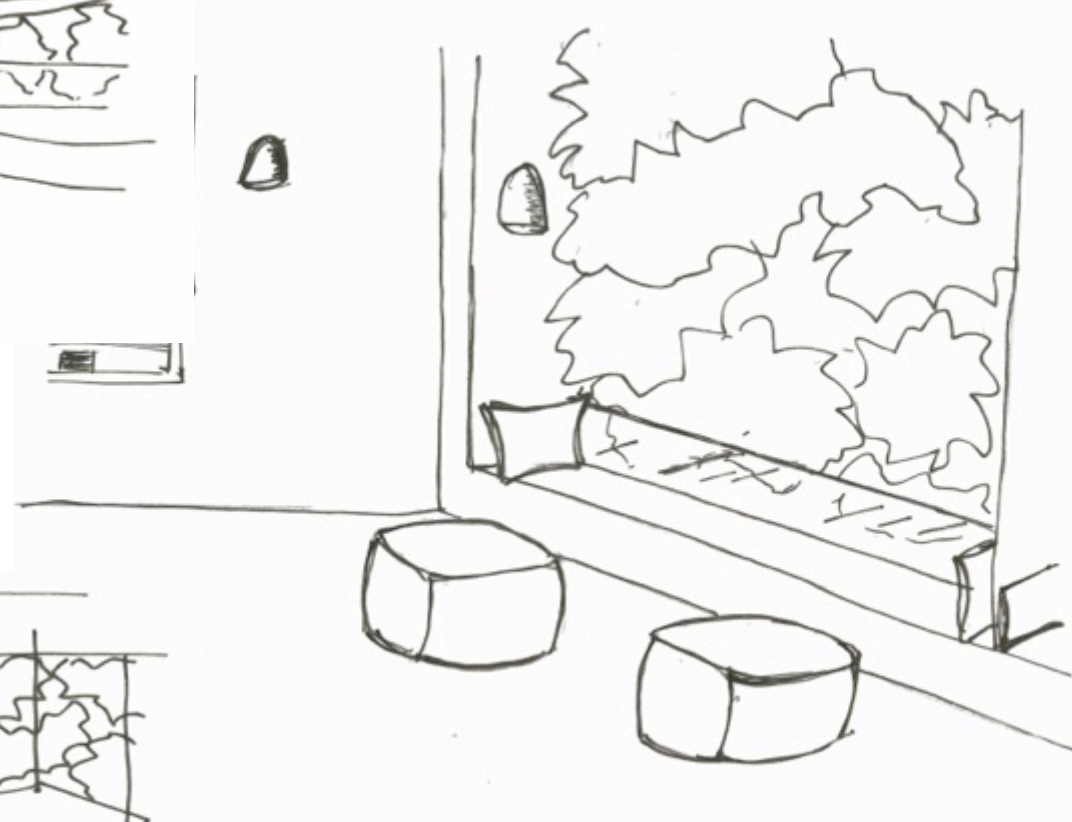
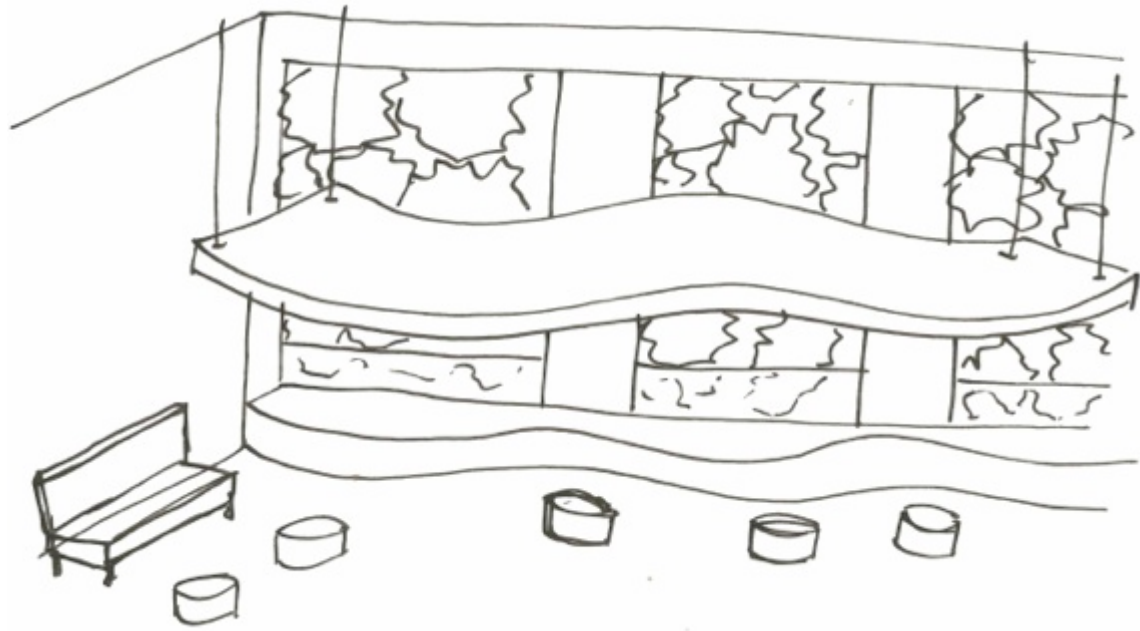
Main Corridor Sketches



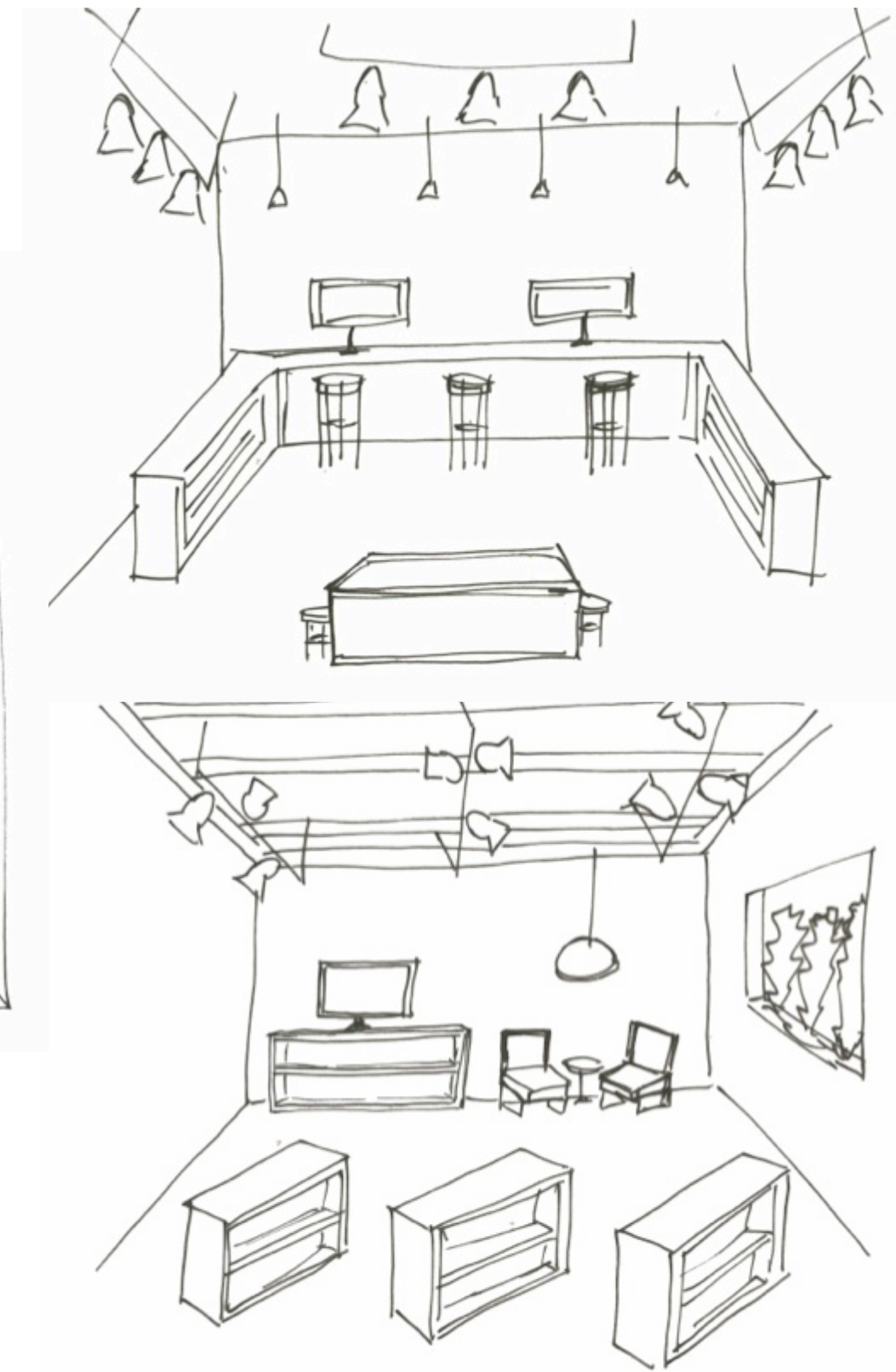
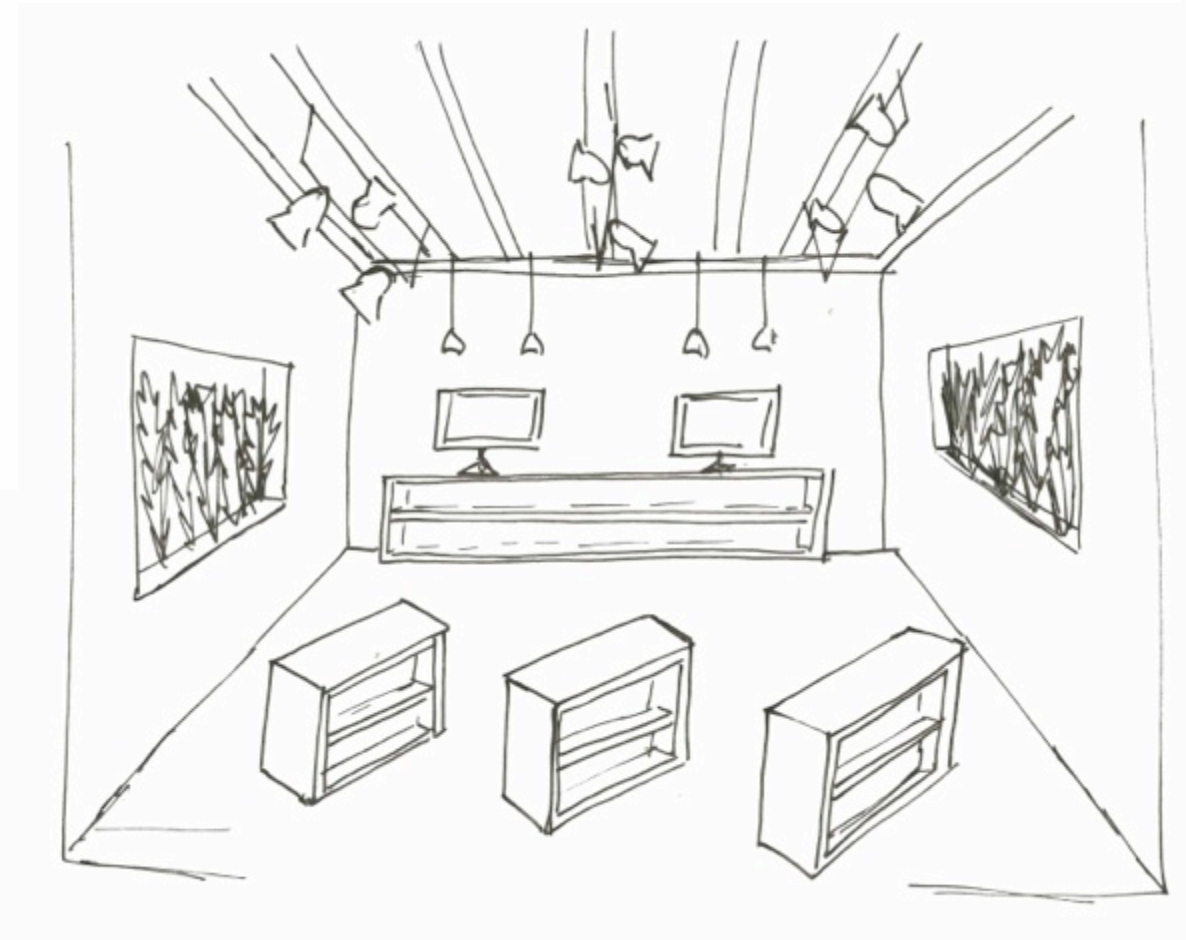
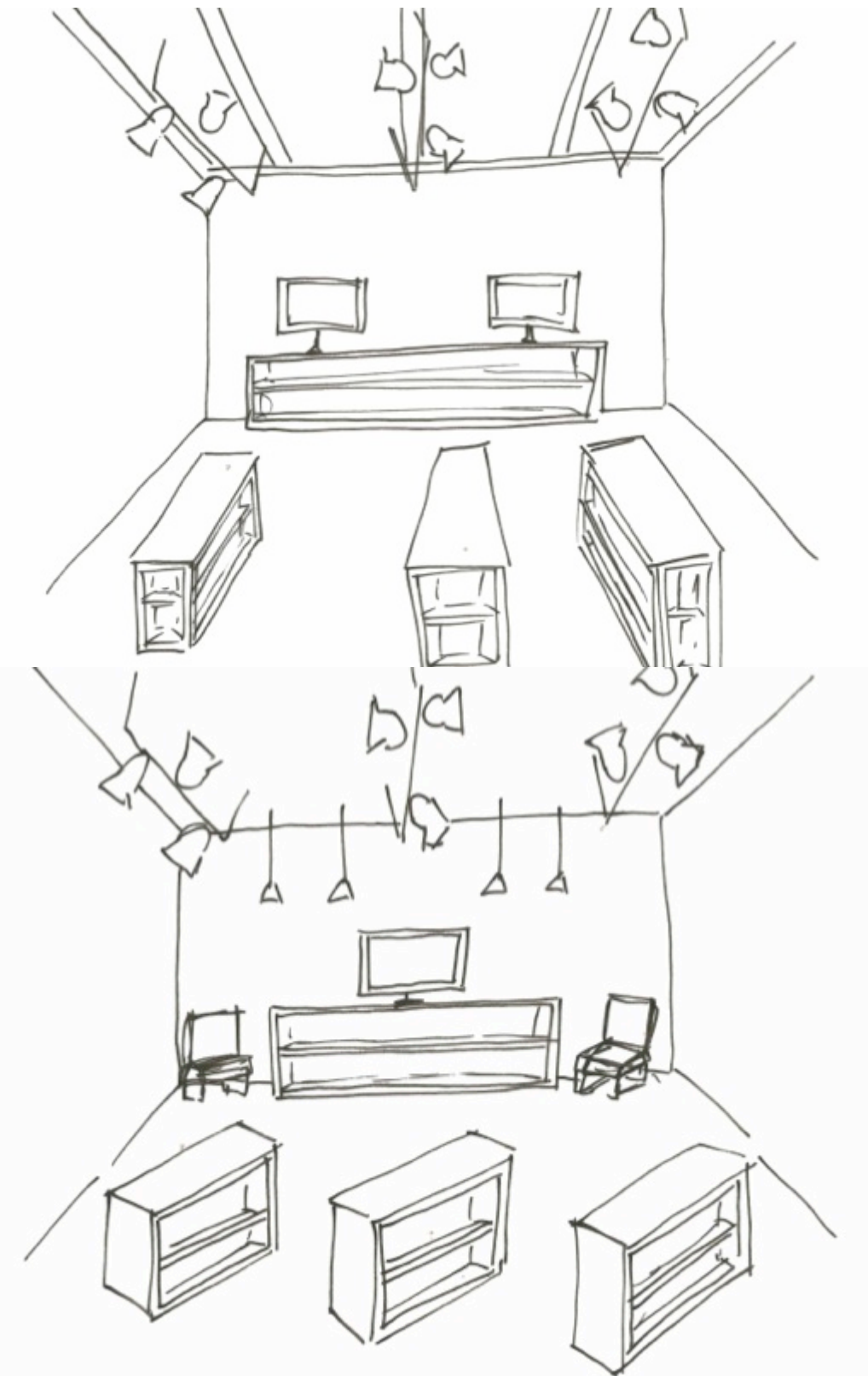
Reception Sketches



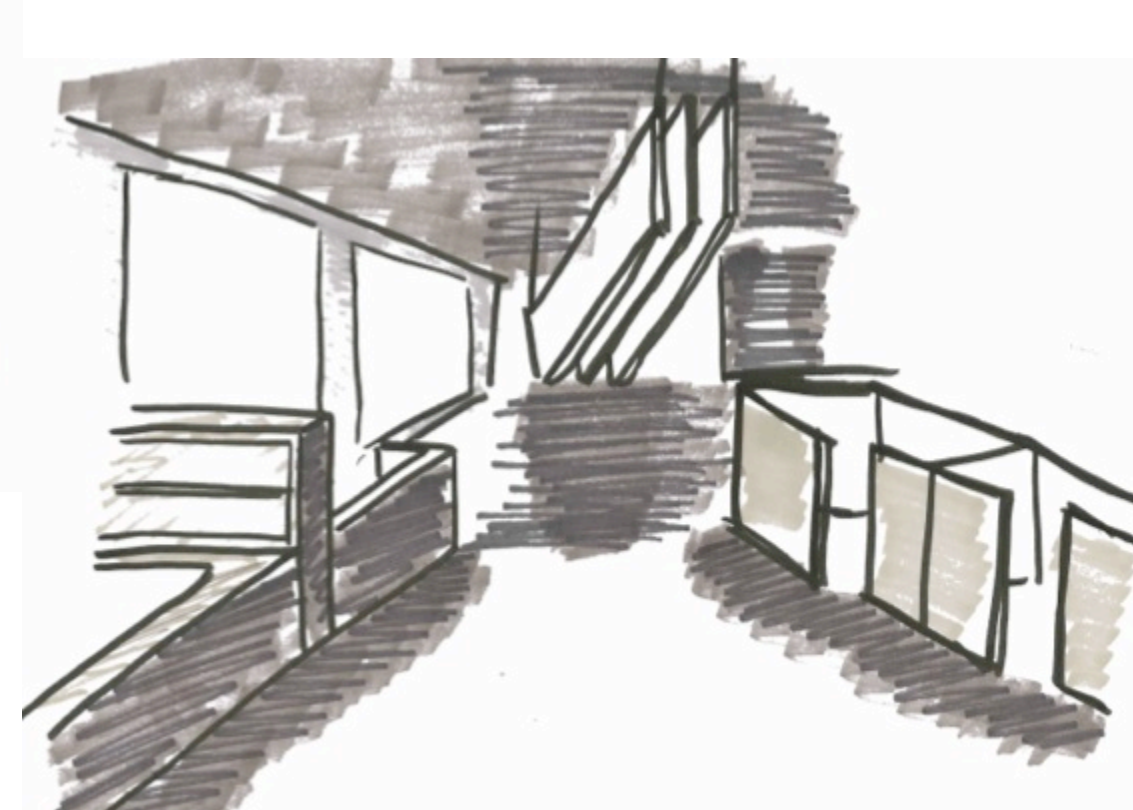
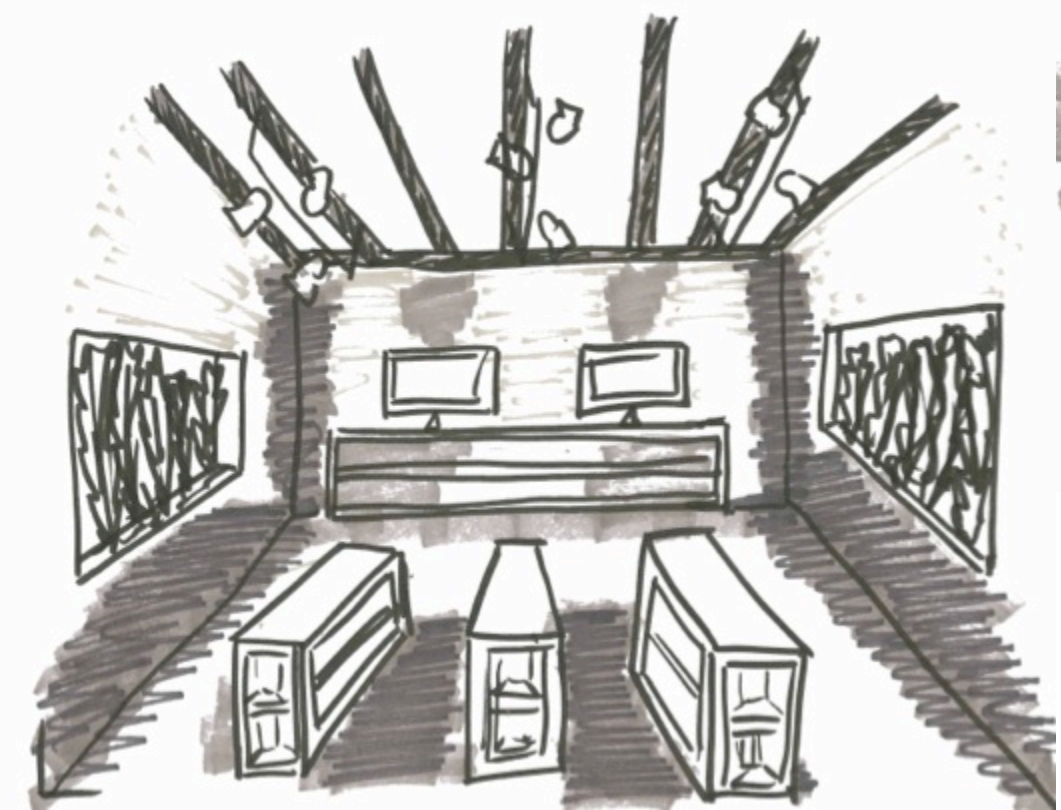
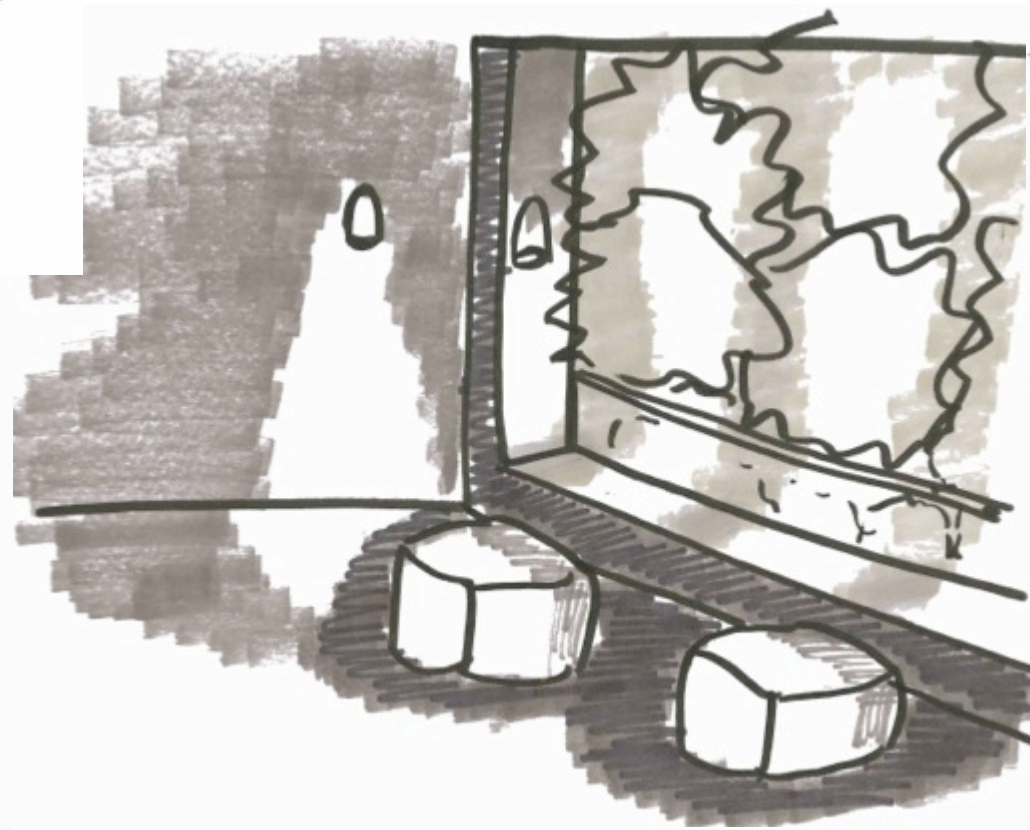
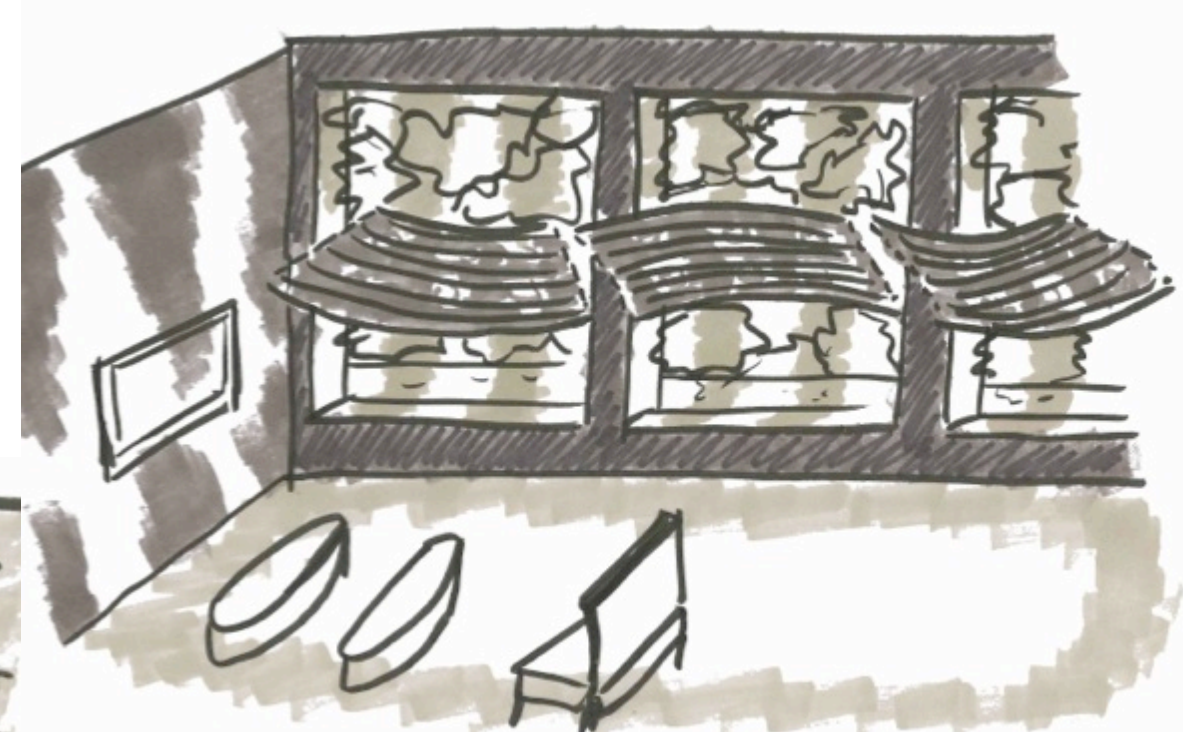
Concept Lounge Sketches



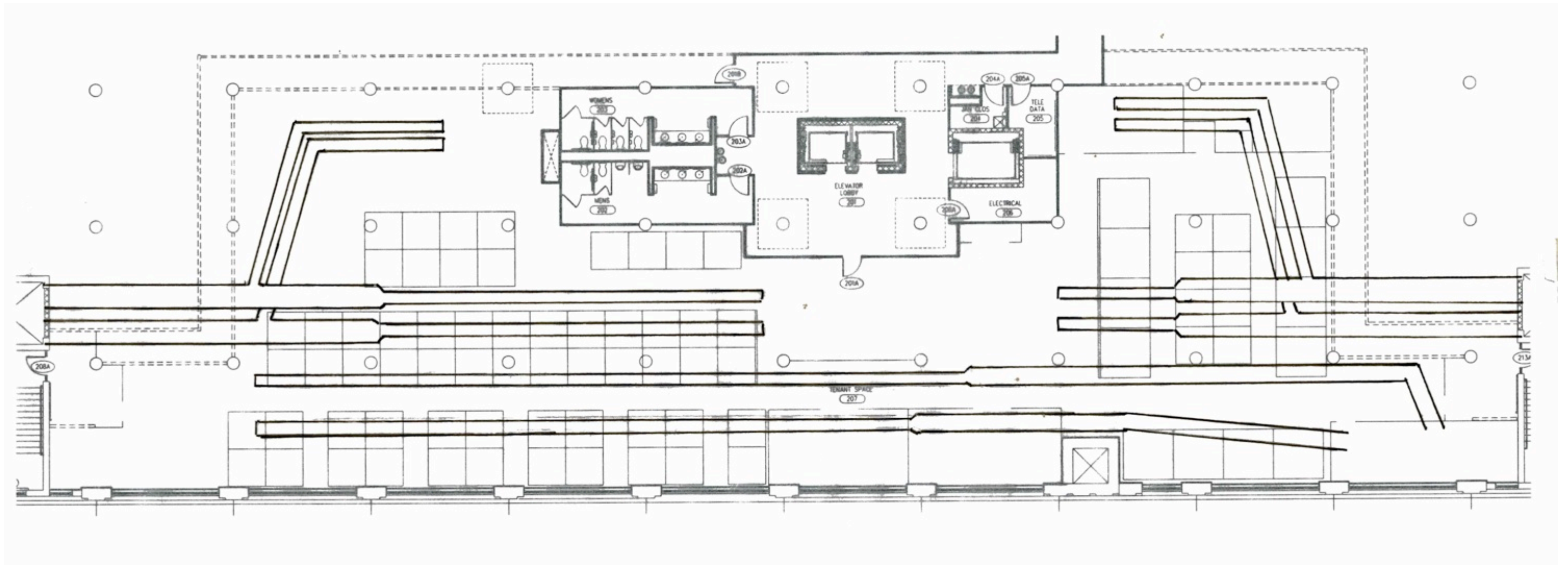
Work Area Sketches



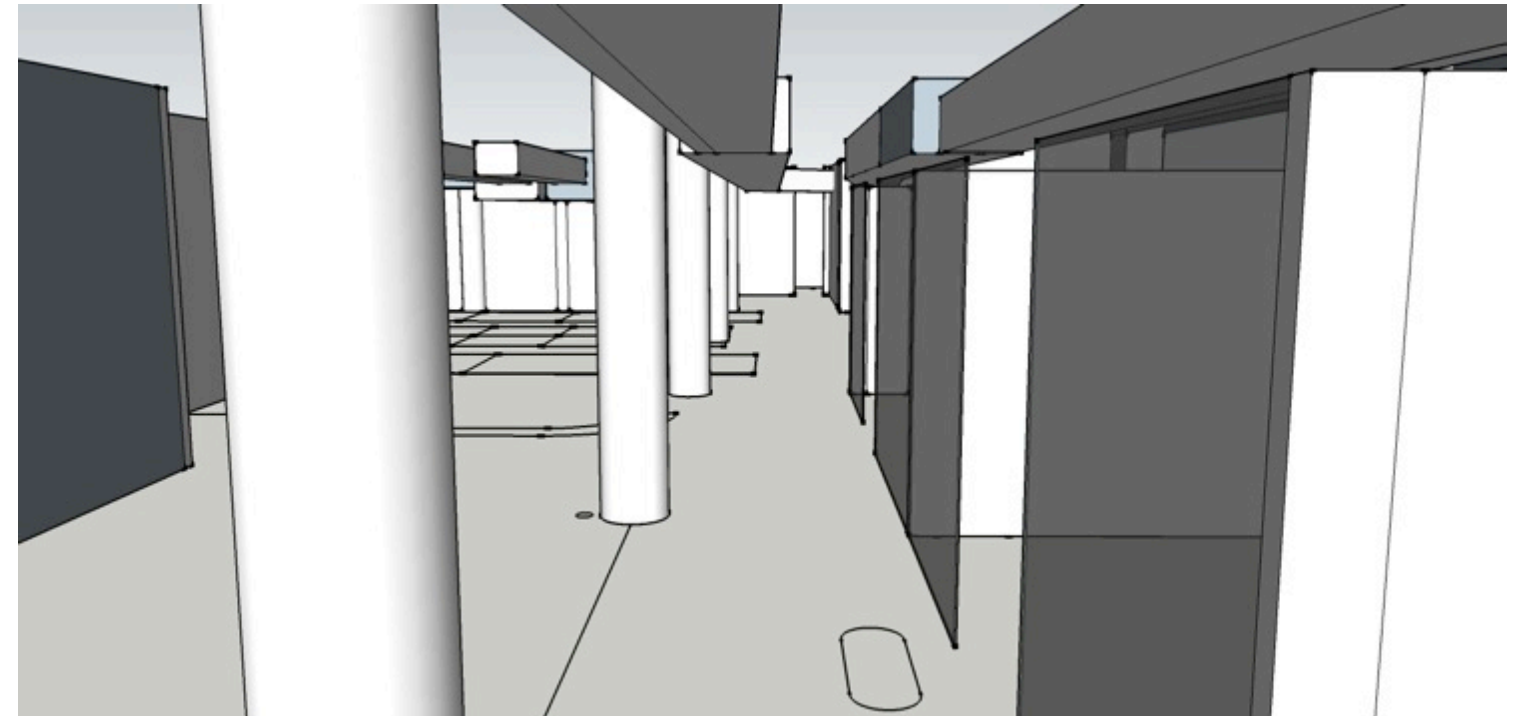
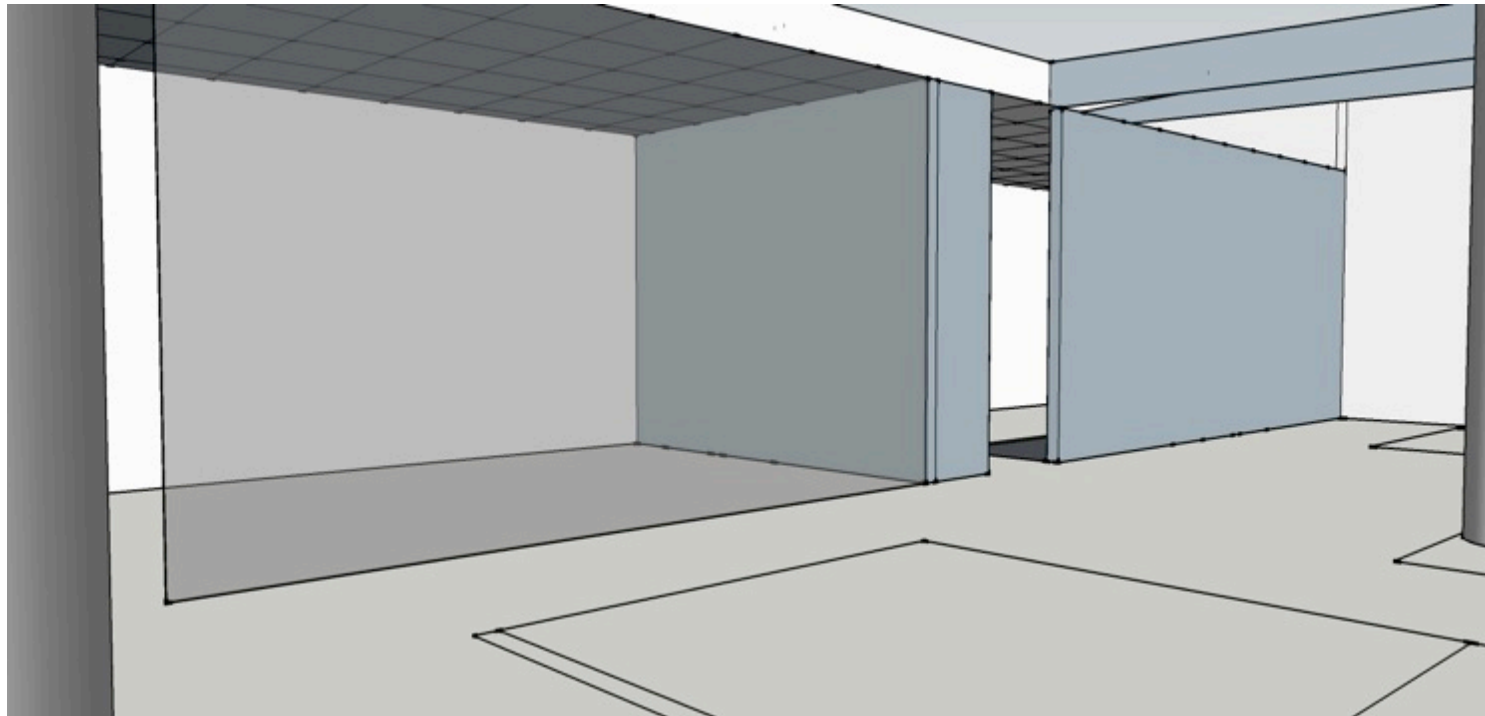
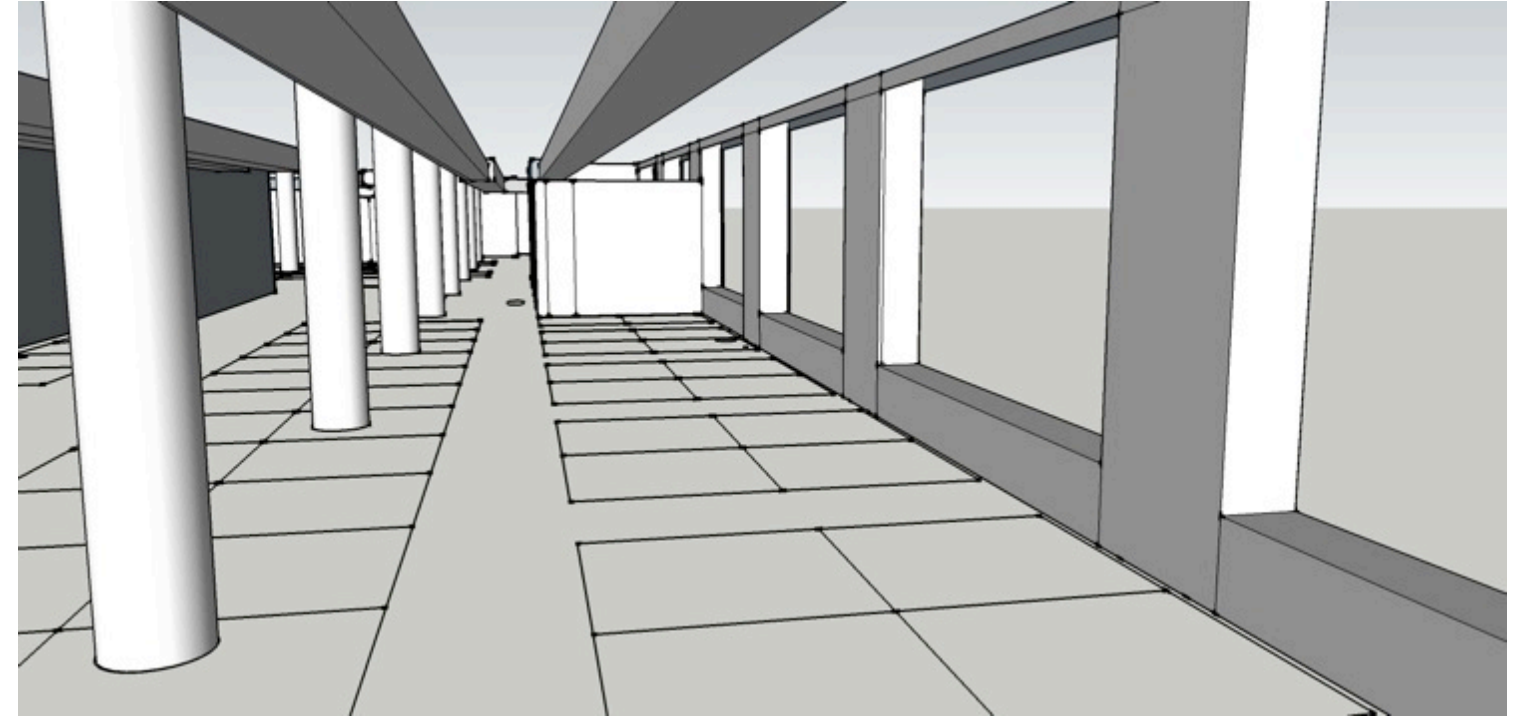
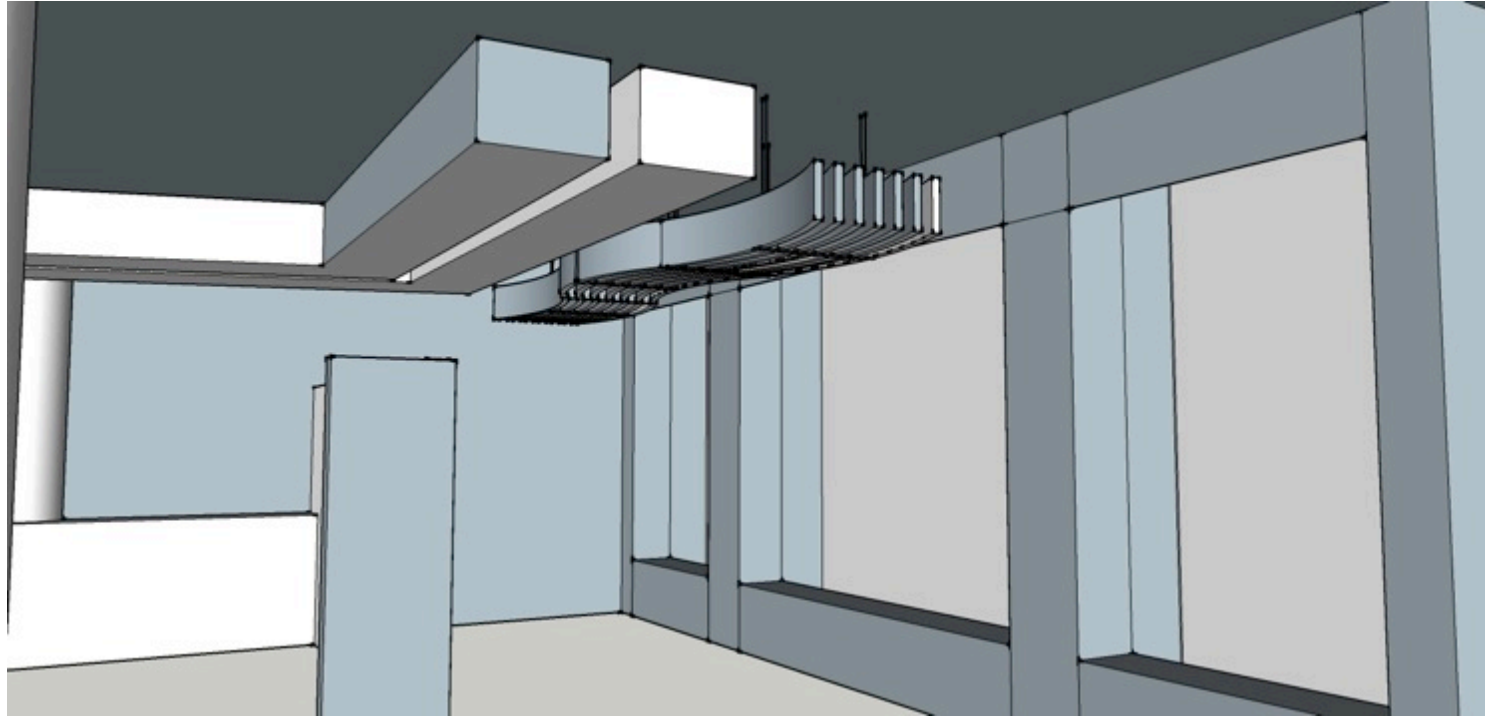
Lighting Sketches



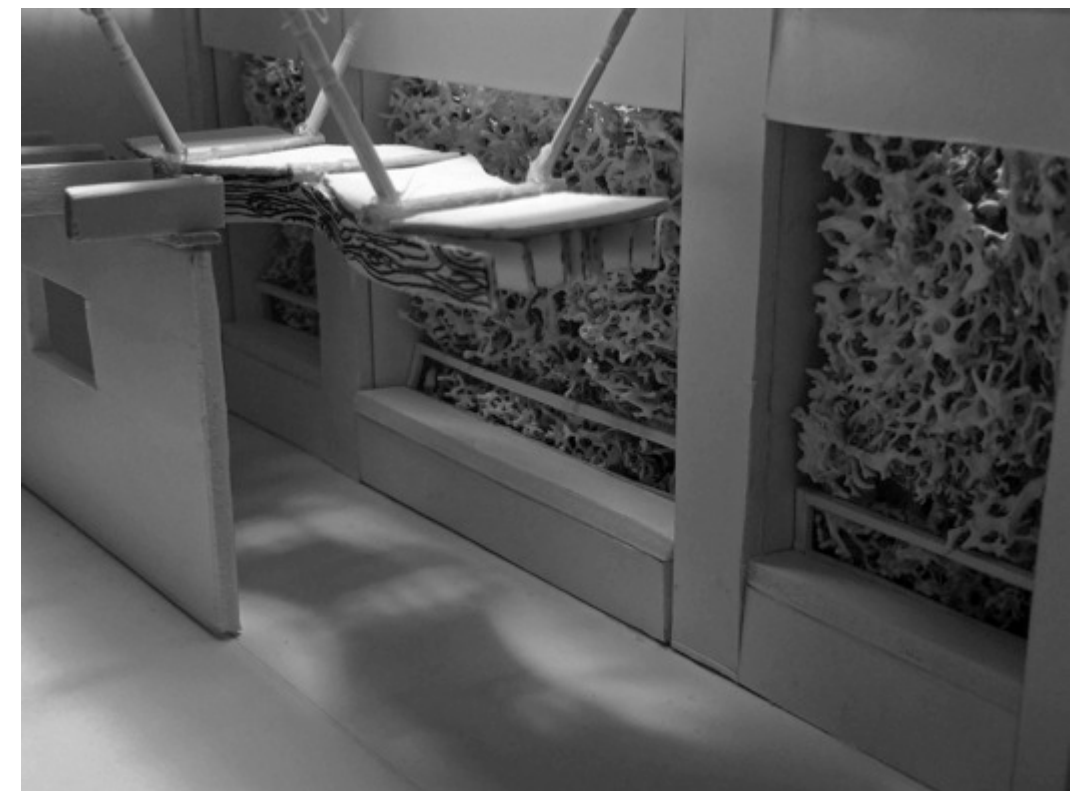
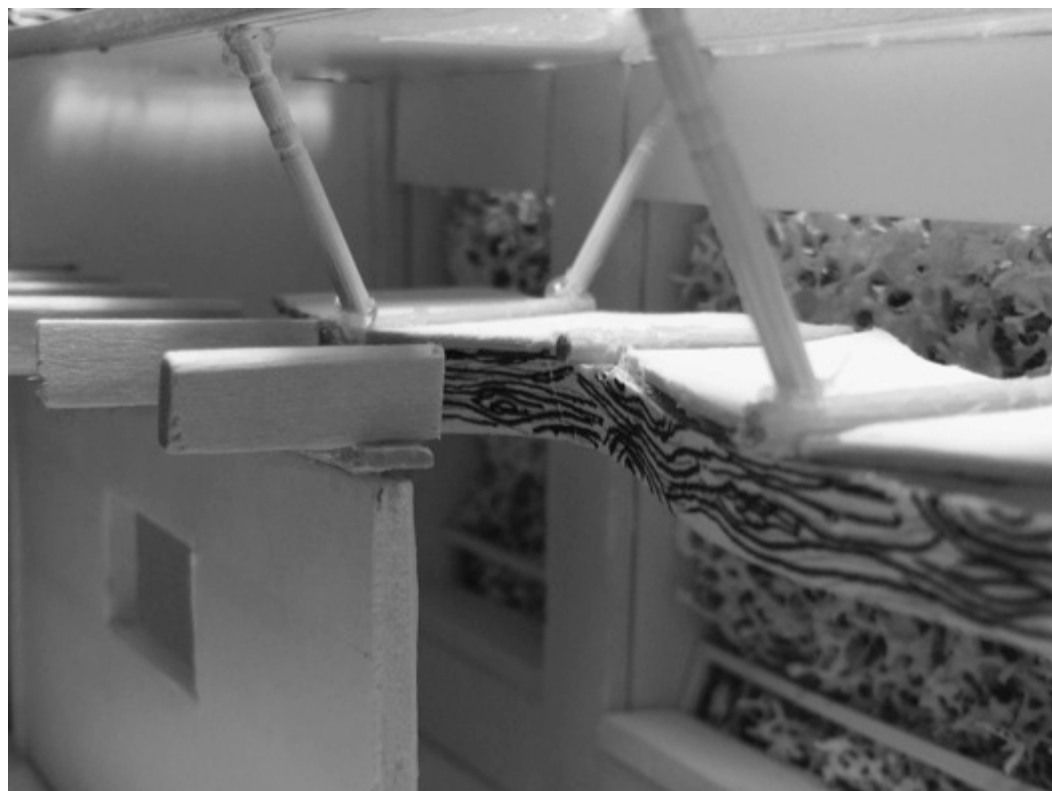
Duct Work



Duct Work



Lighting Model



Sustainability Strategies

- Use natural or recycled wall treatments and flooring
- Use eco-friendly lighting, such as LEDs and CFLs (compact fluorescent lamp)
- -Use up to 75% less energy than standards)
- Reclaimed wood will be used
- Using long-lasting and durable products