

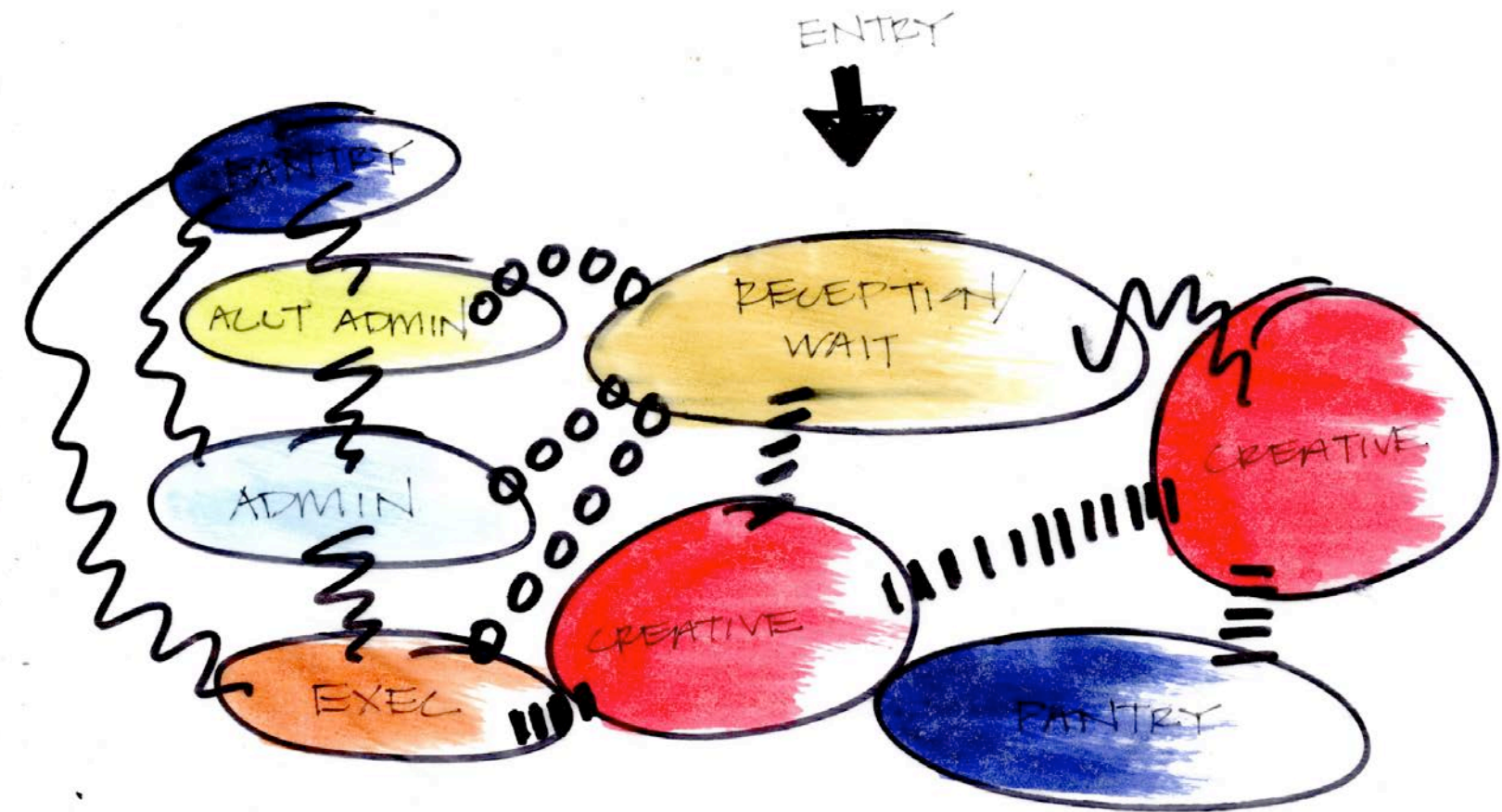
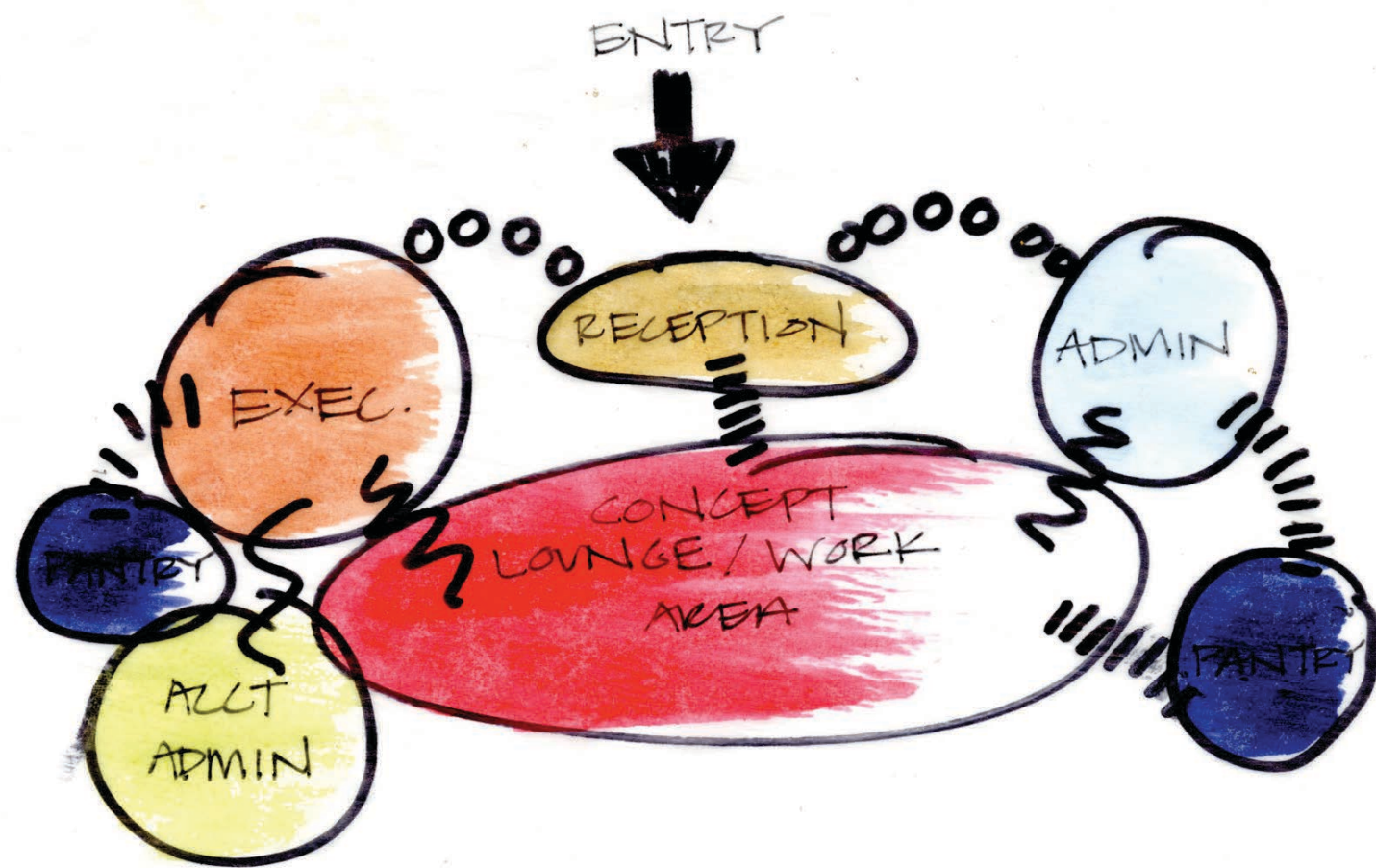
P O R T F O L I O T W O

INTERIOR DESIGN 3600

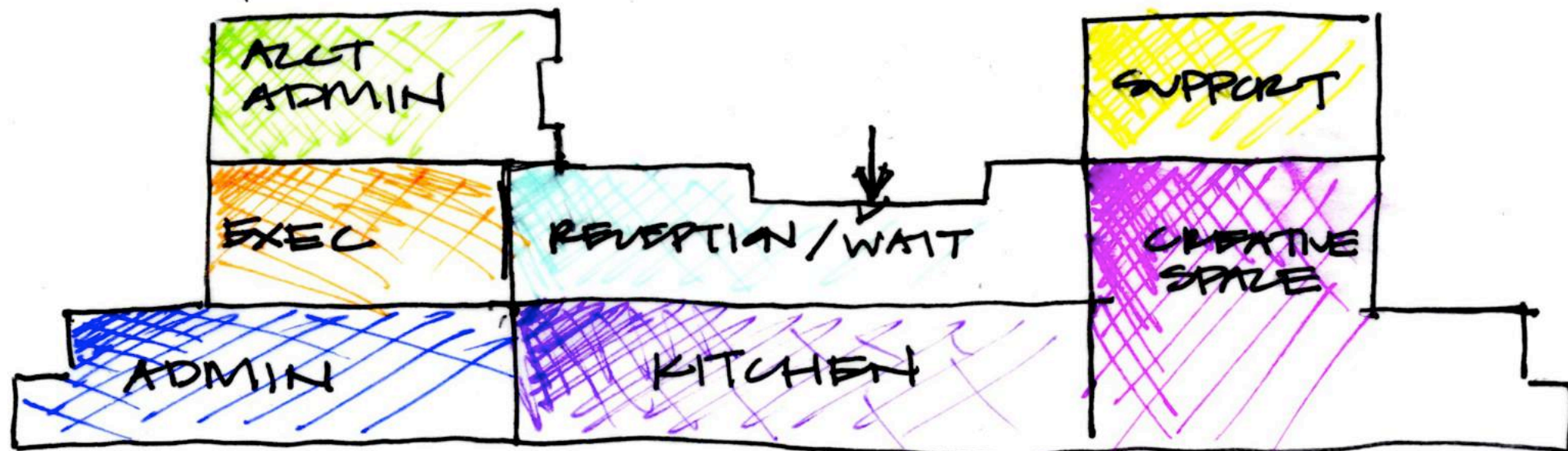
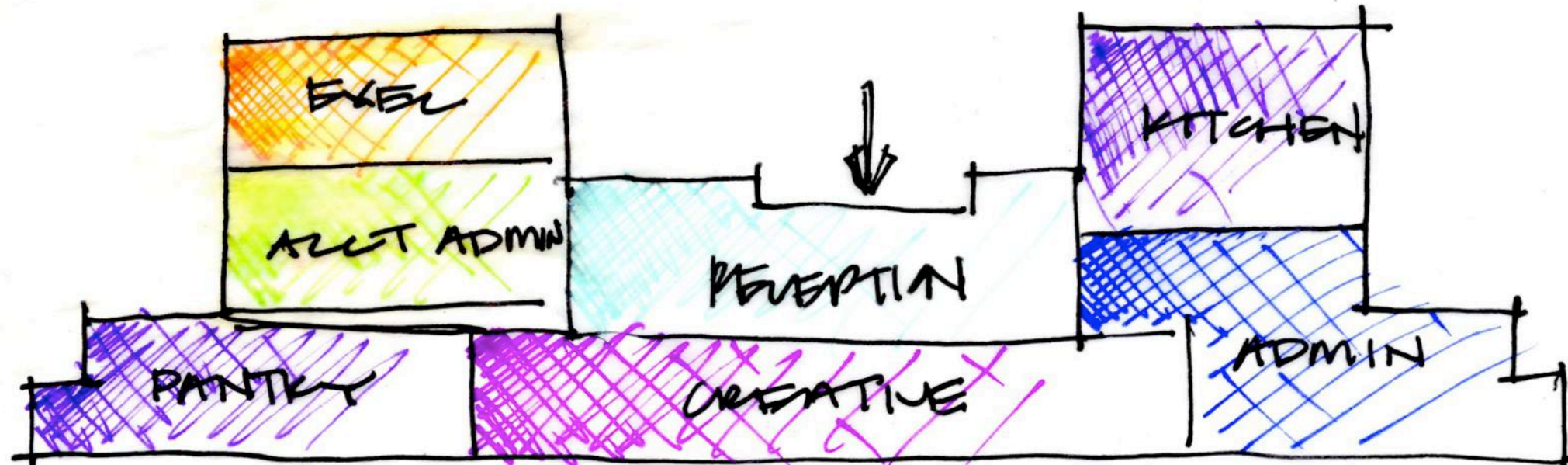
ELISA CHRISTOPHER

FALL 2014

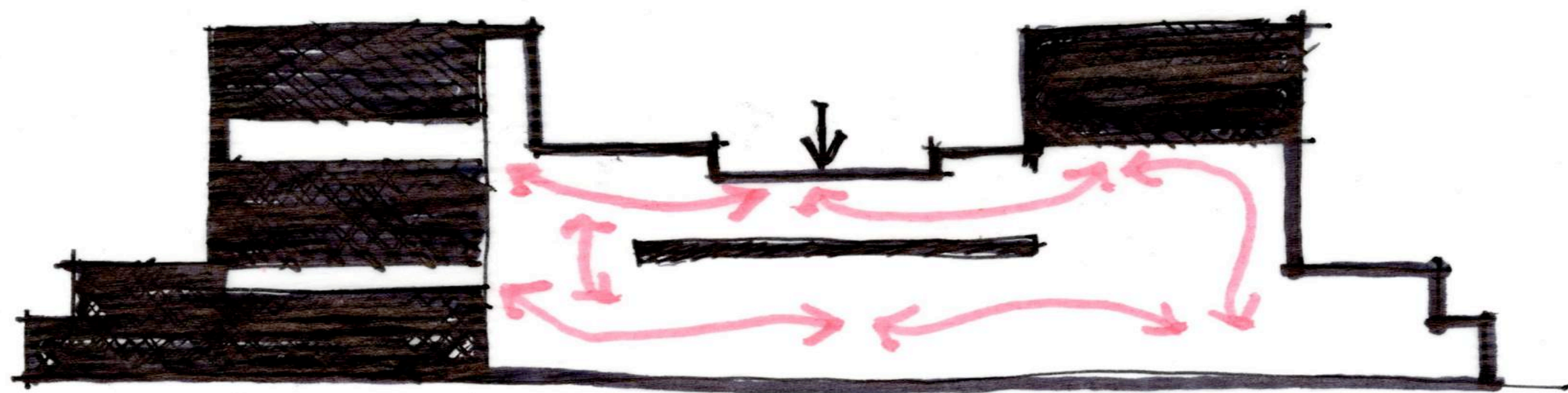
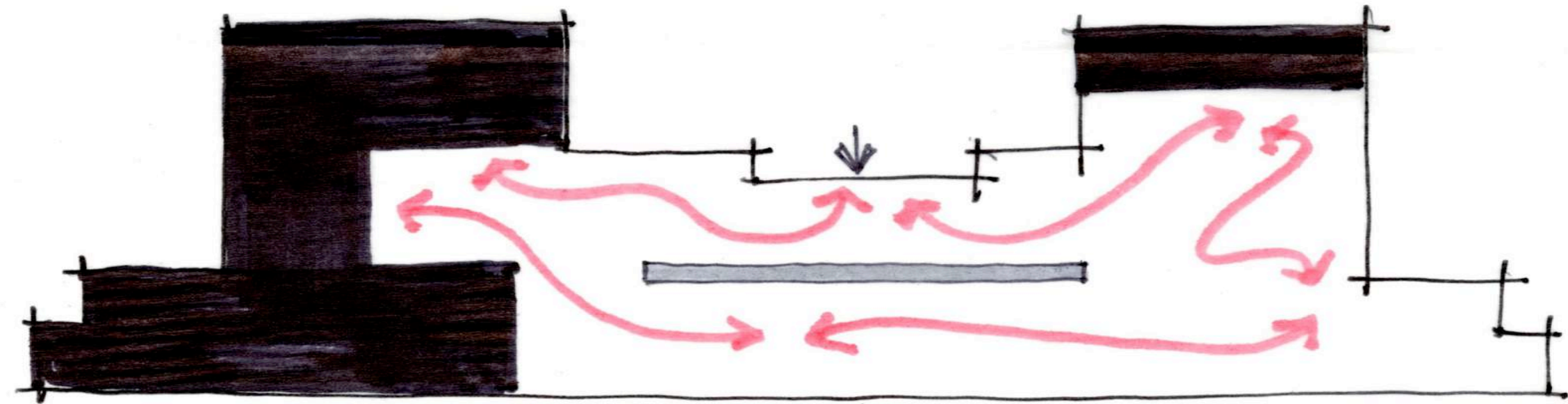
PLANNING: BUBBLE DIAGRAMS



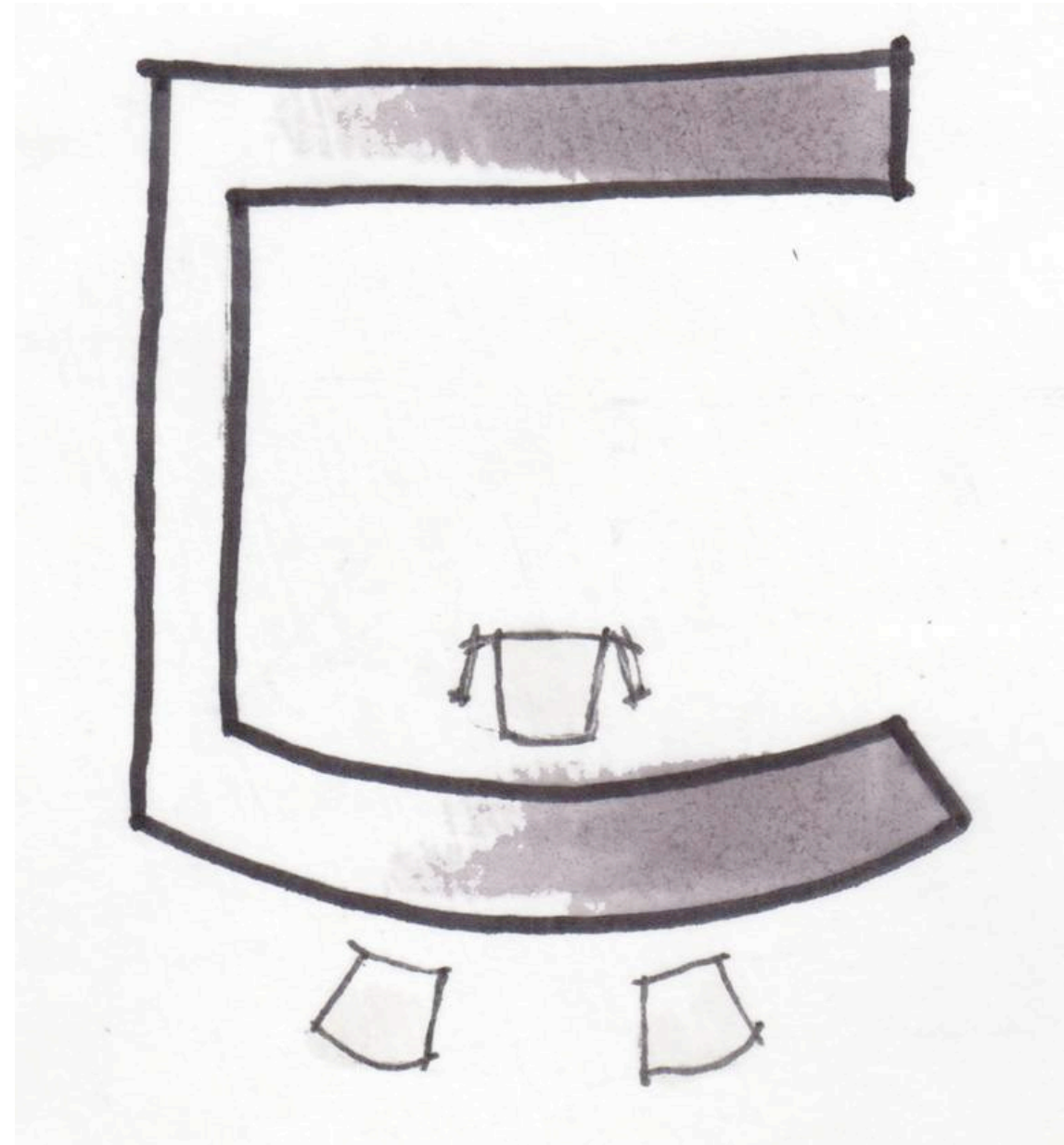
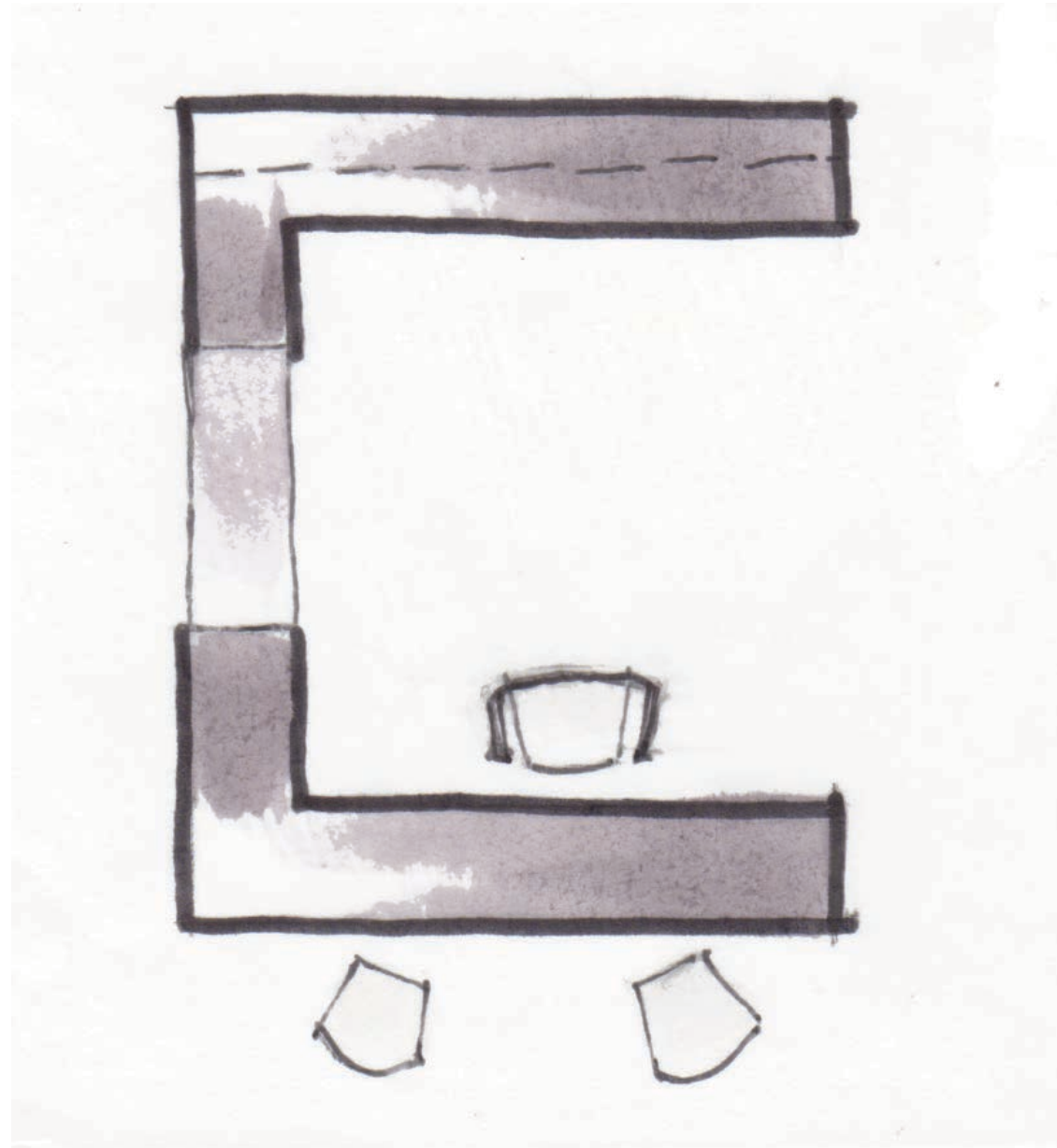
PLANNING: BLOCK DIAGRAMS



SPATIAL CONCEPT: CIRCULATION

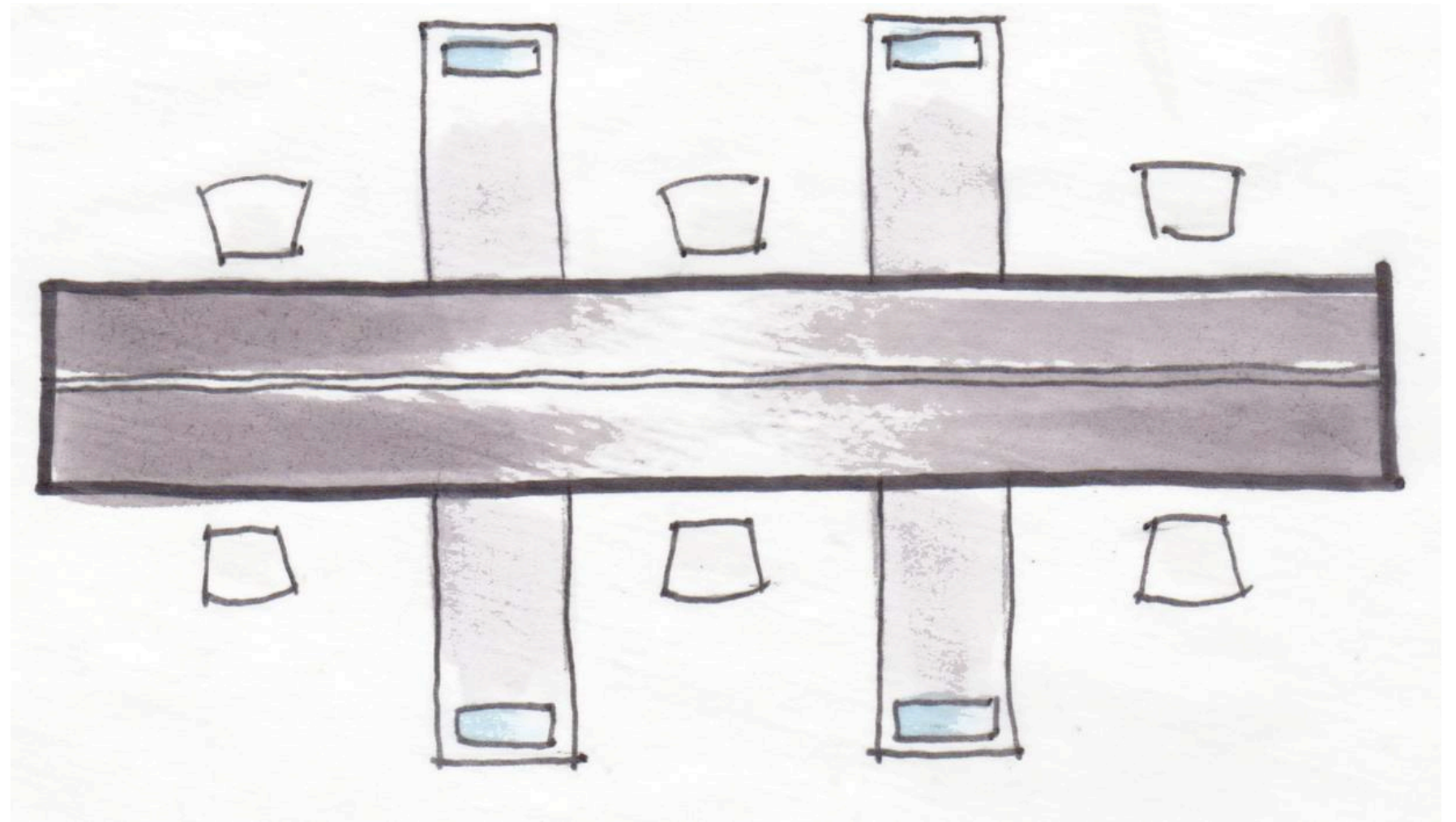


SPACE STANDARD DRAWINGS



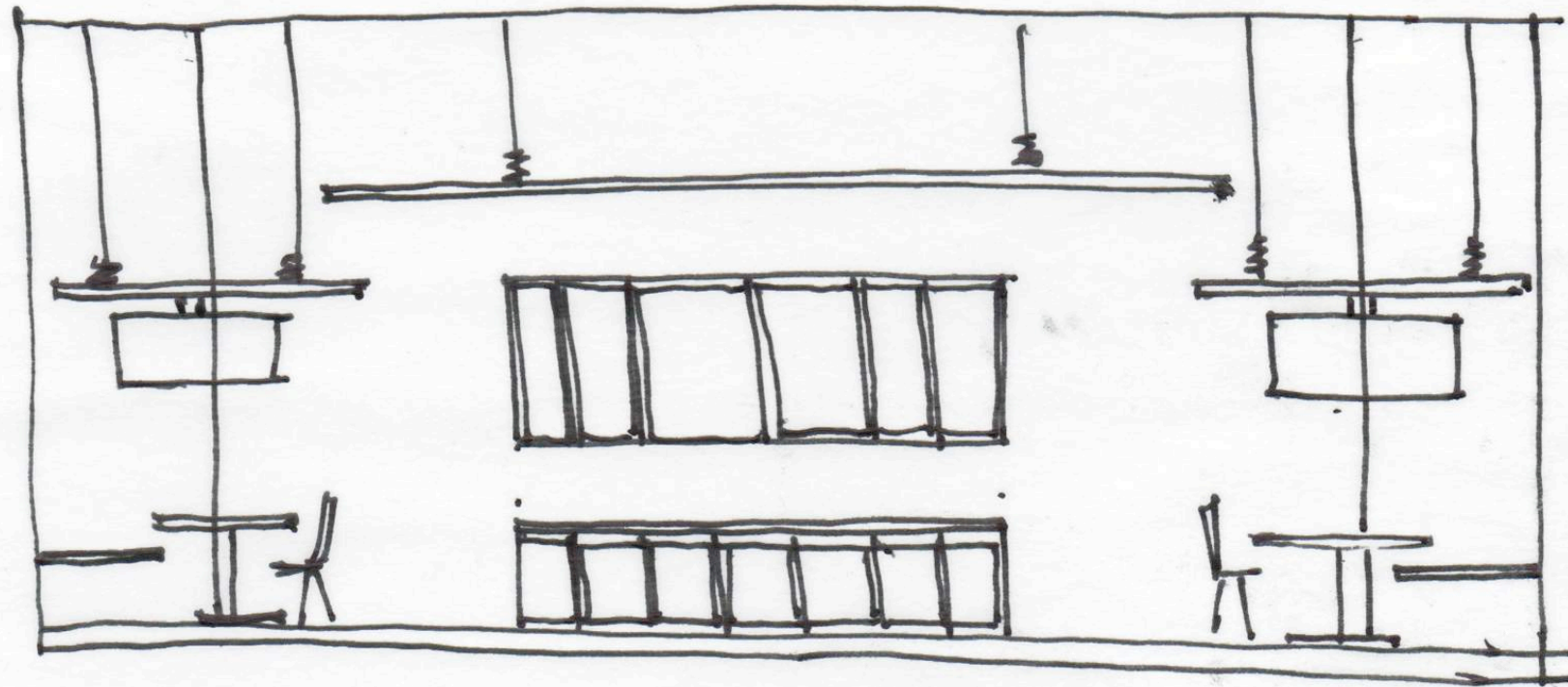
LARGE OFFICE LAYOUT

SPACE STANDARD DRAWINGS



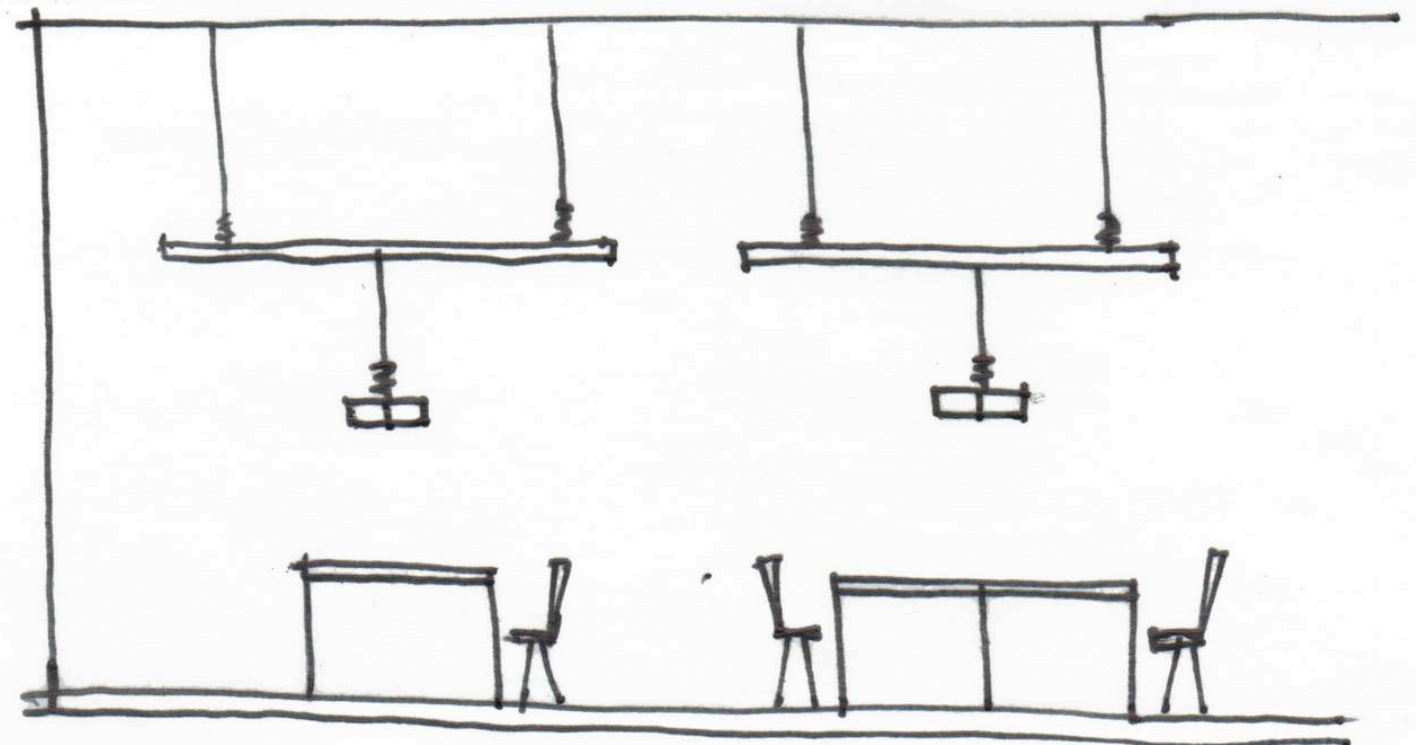
STANDARD WORKSTATION LAYOUT

SECTION SKETCHES

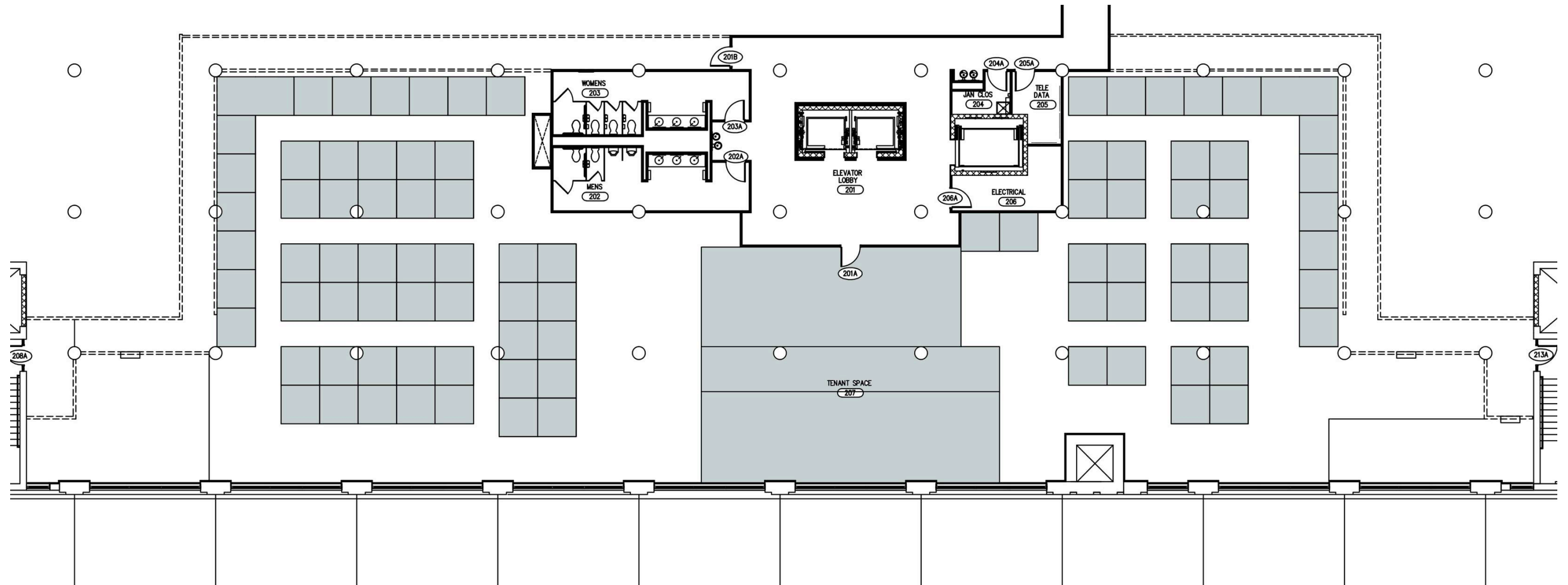


LUNCHROOM/
PANTRY

OPEN WORKSTATION

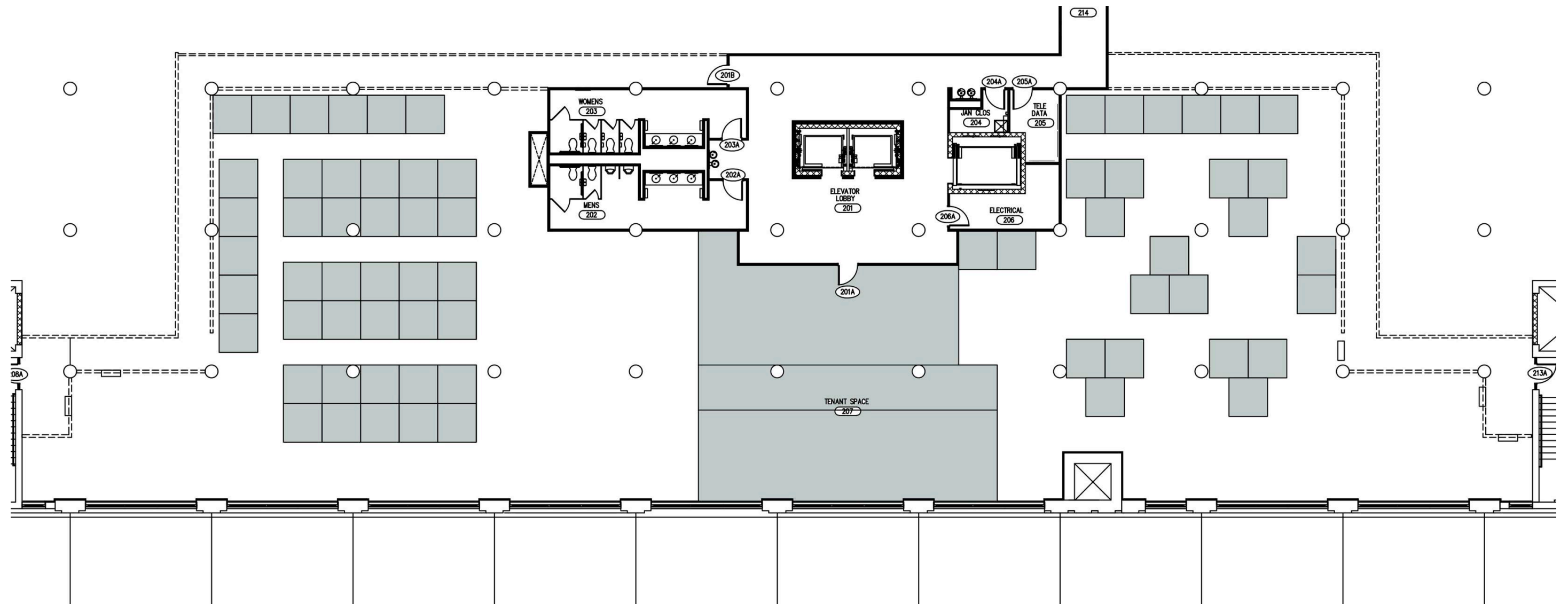


SPACE PLANNING



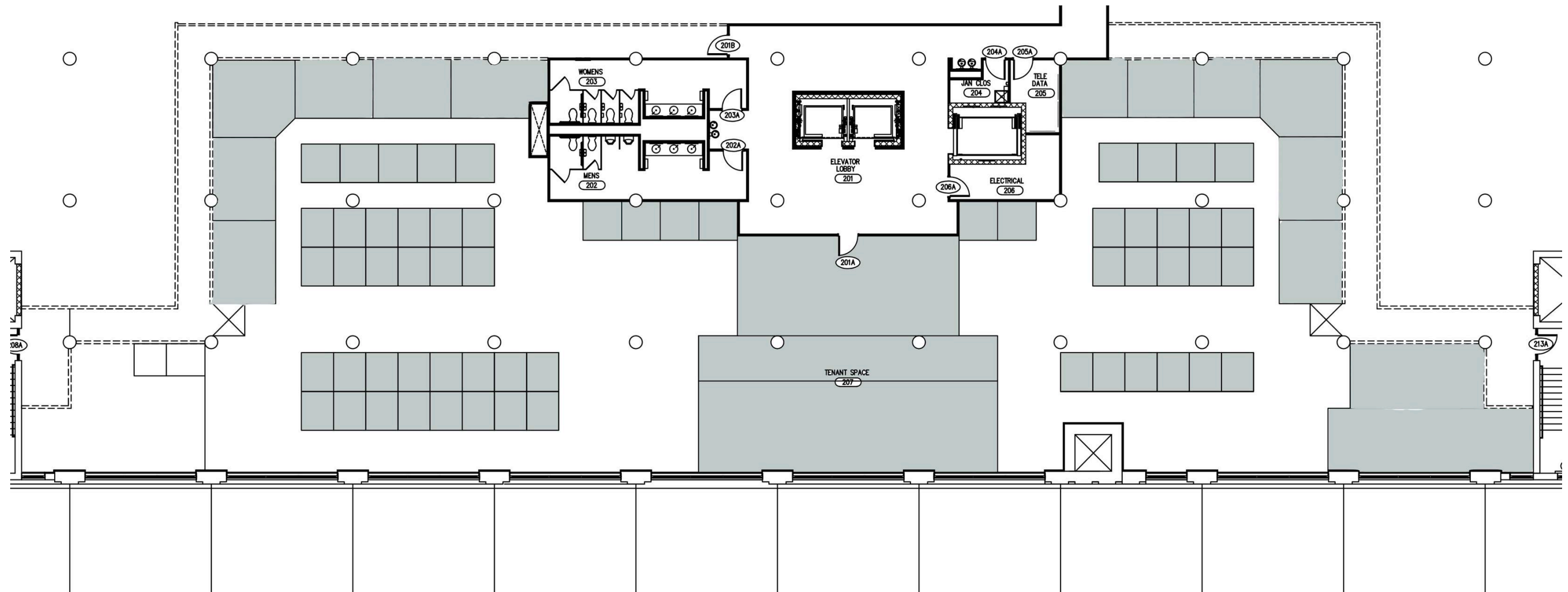
OPTION ONE

SPACE PLANNING



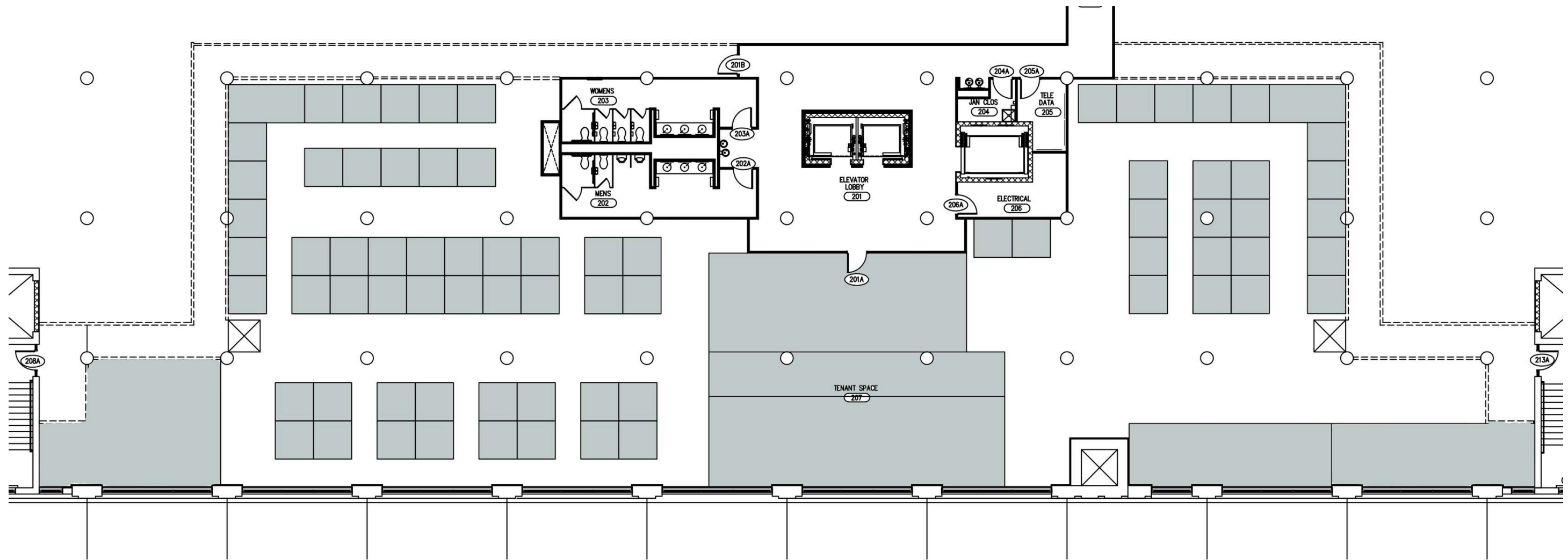
OPTION TWO

SPACE PLANNING



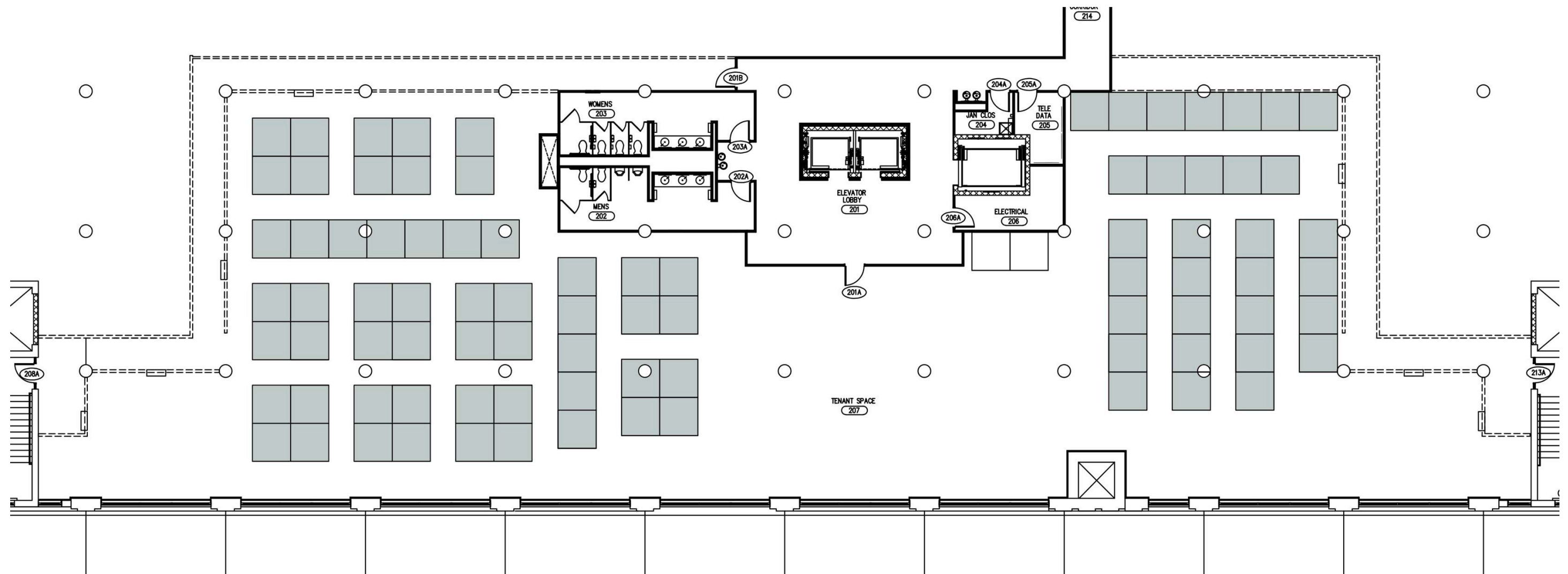
OPTION THREE

SPACE PLANNING



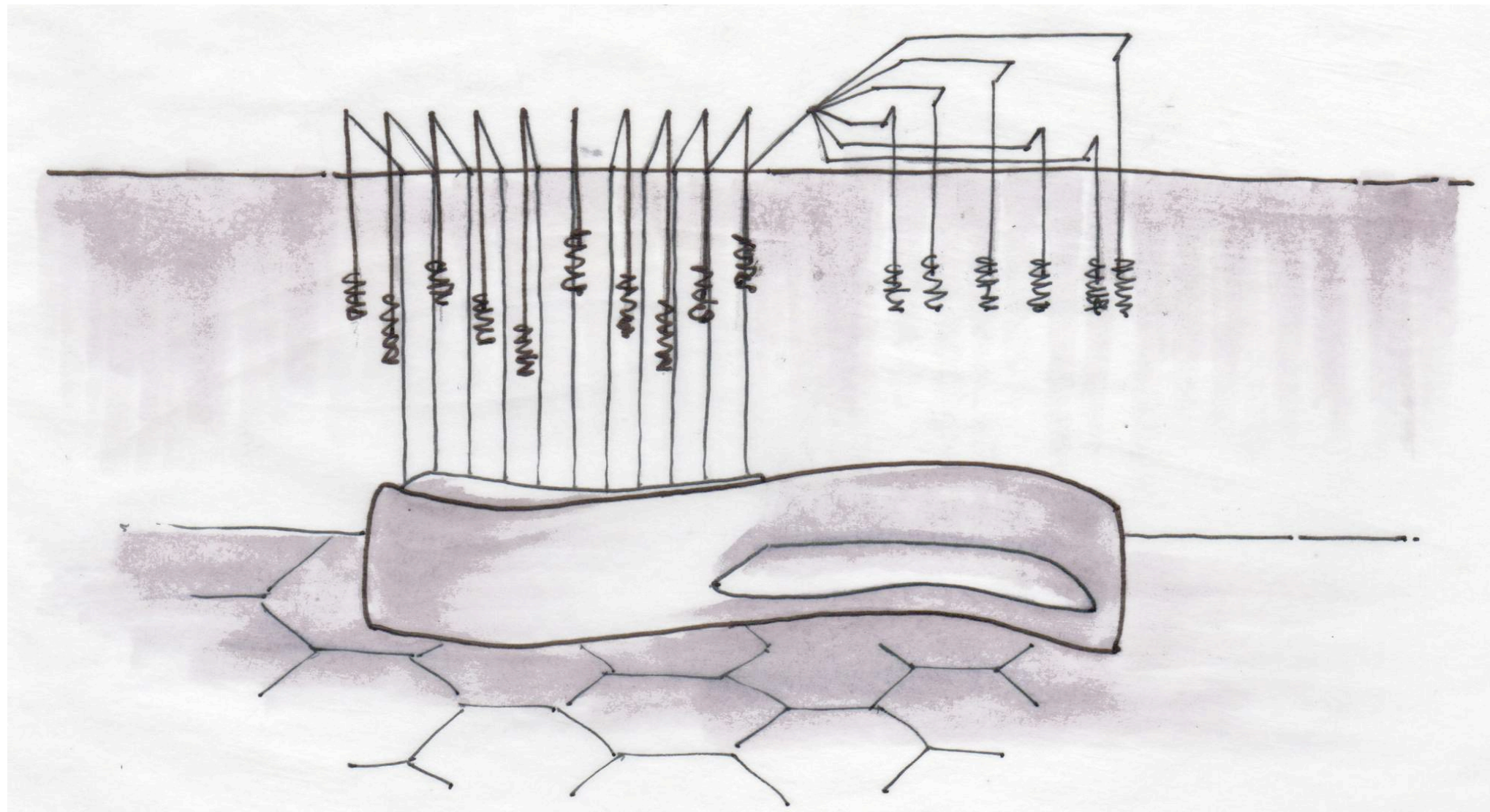
OPTION FOUR

SPACE PLANNING



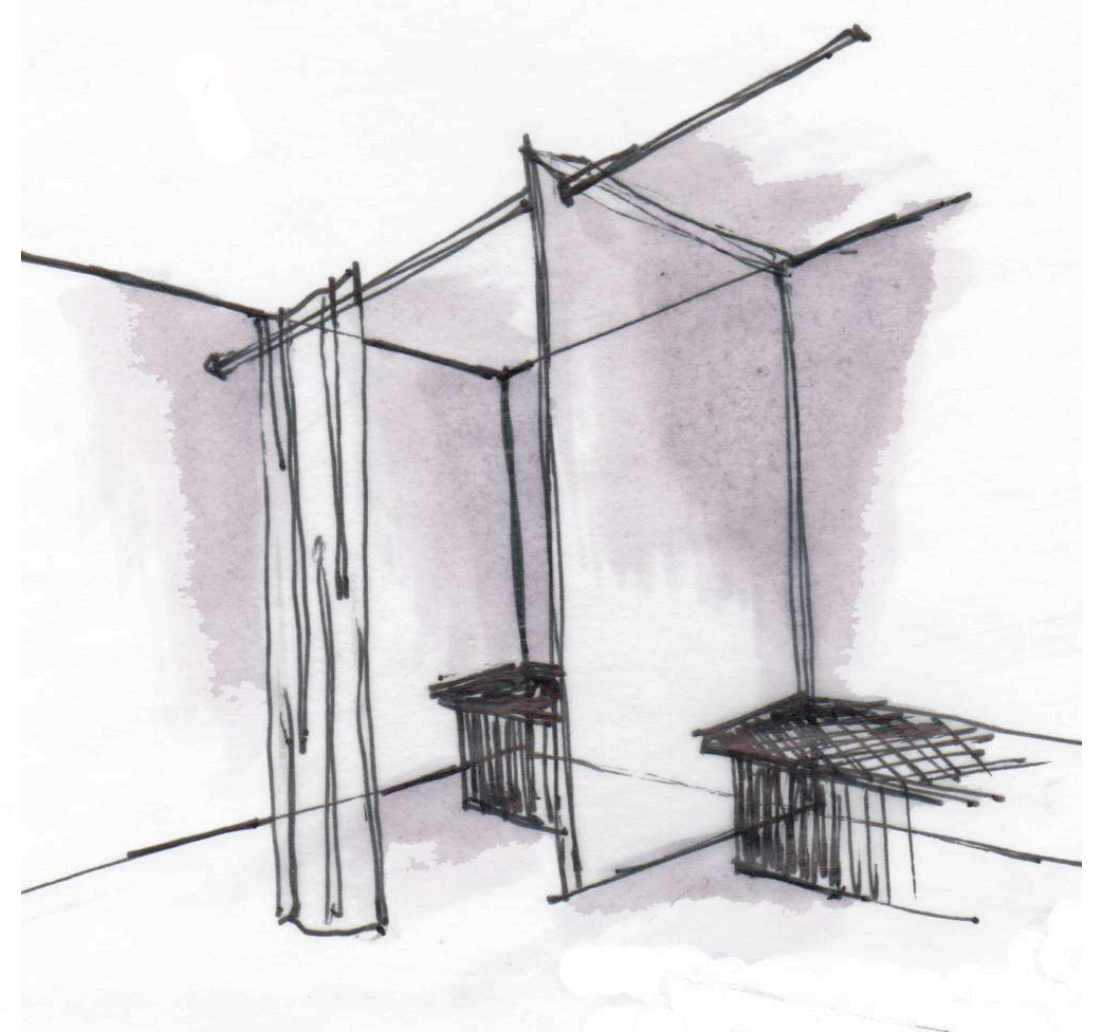
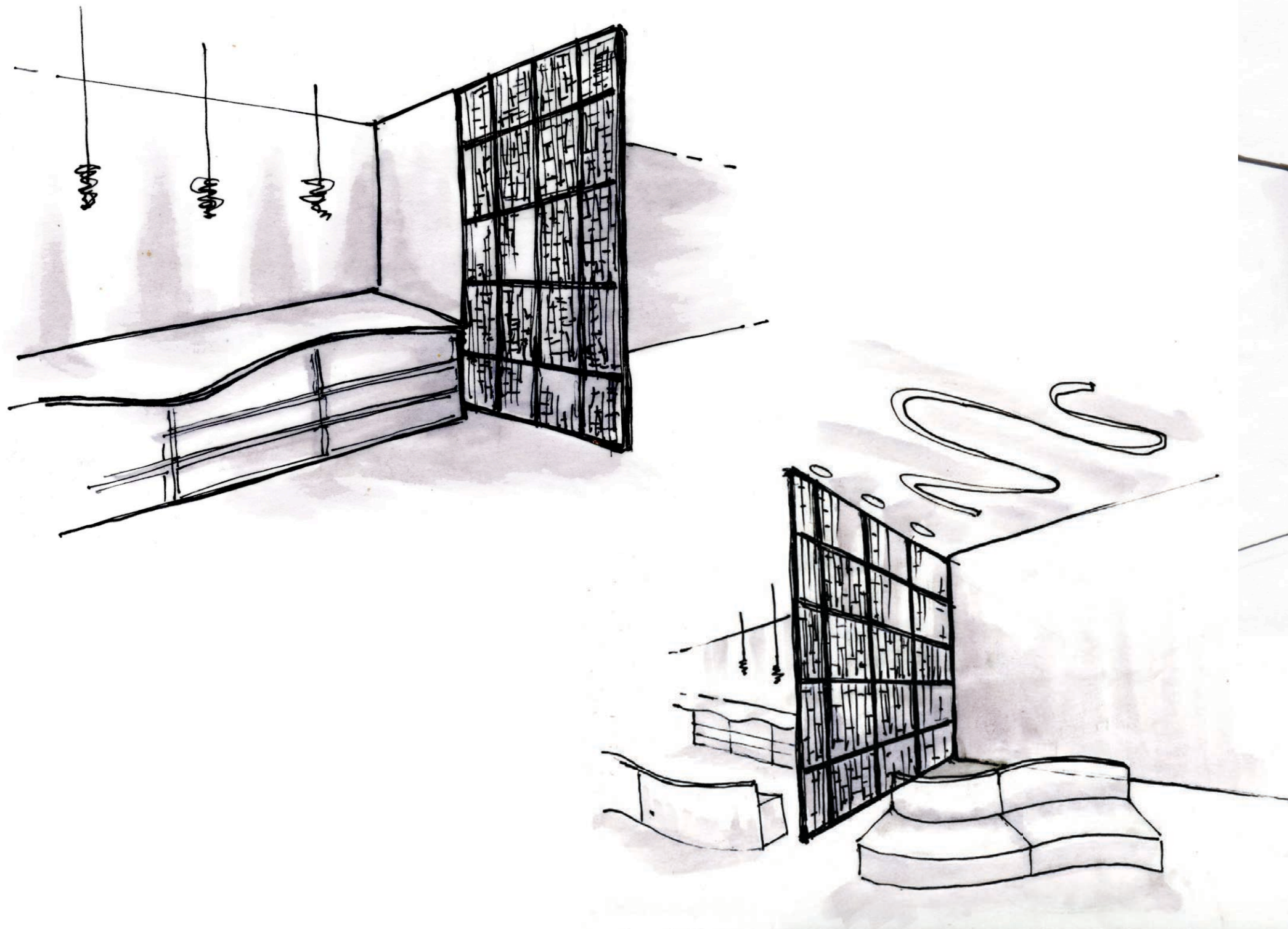
OPTION FIVE

SKETCHES: ENTRY

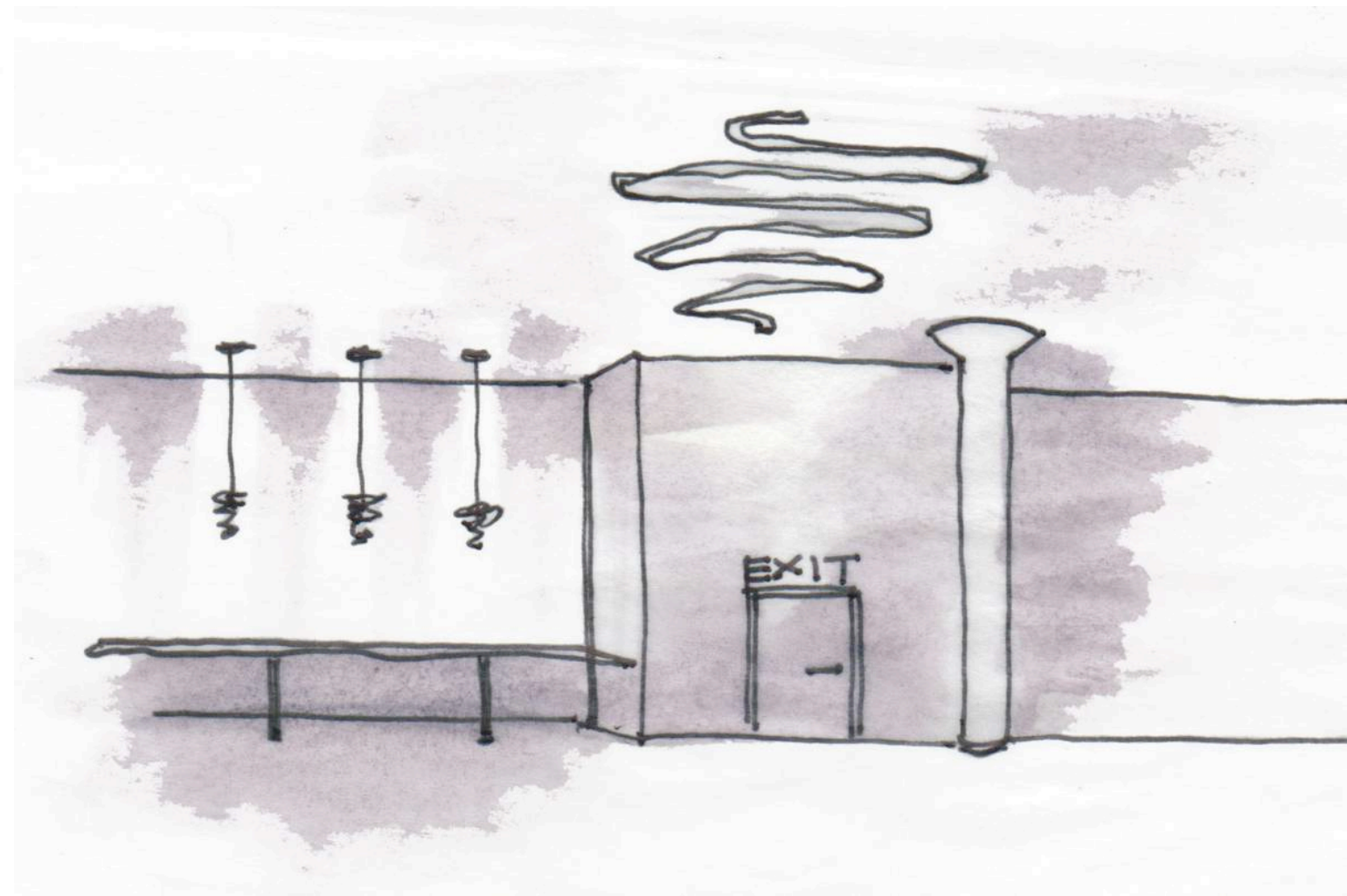
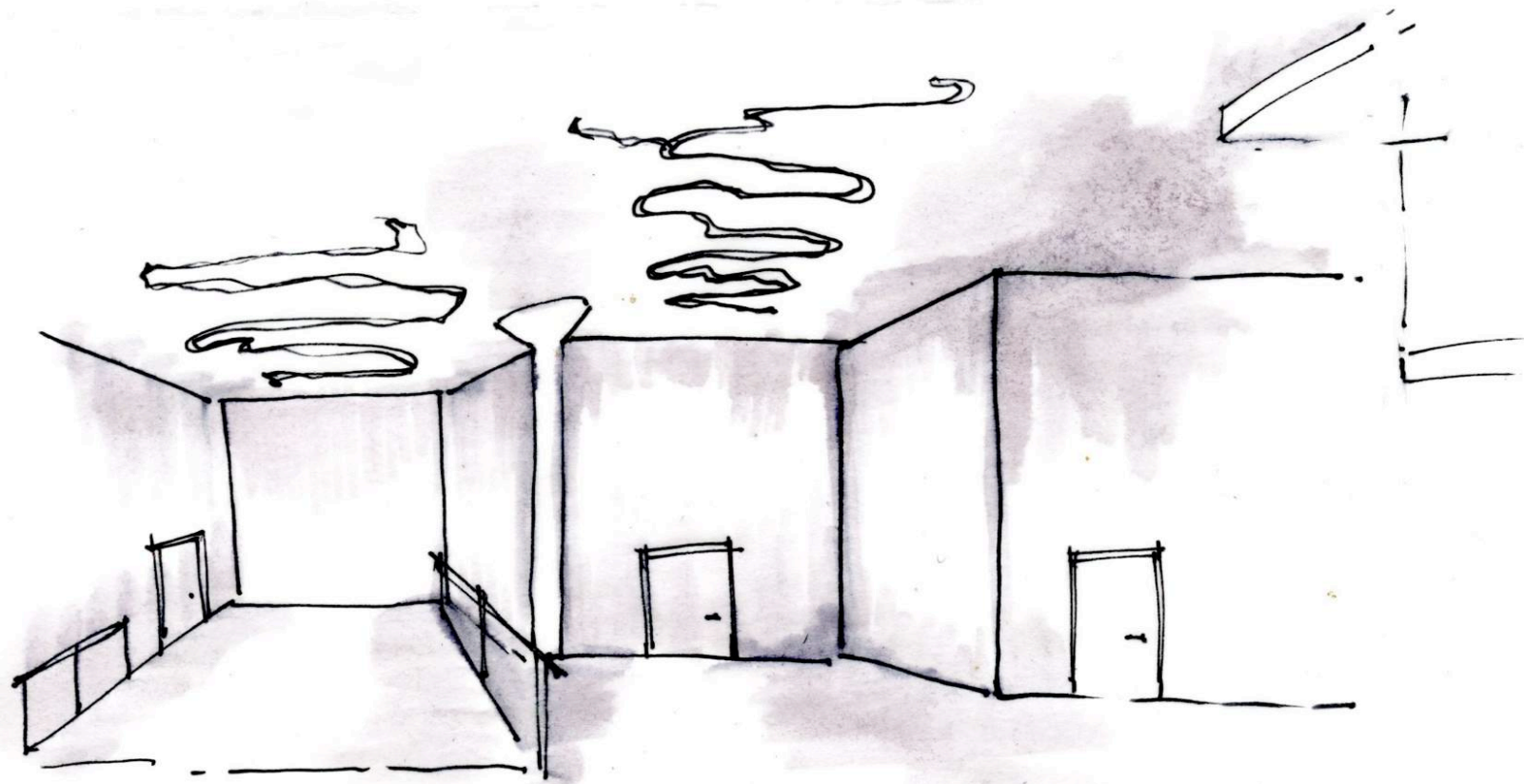


RECEPTION DESK

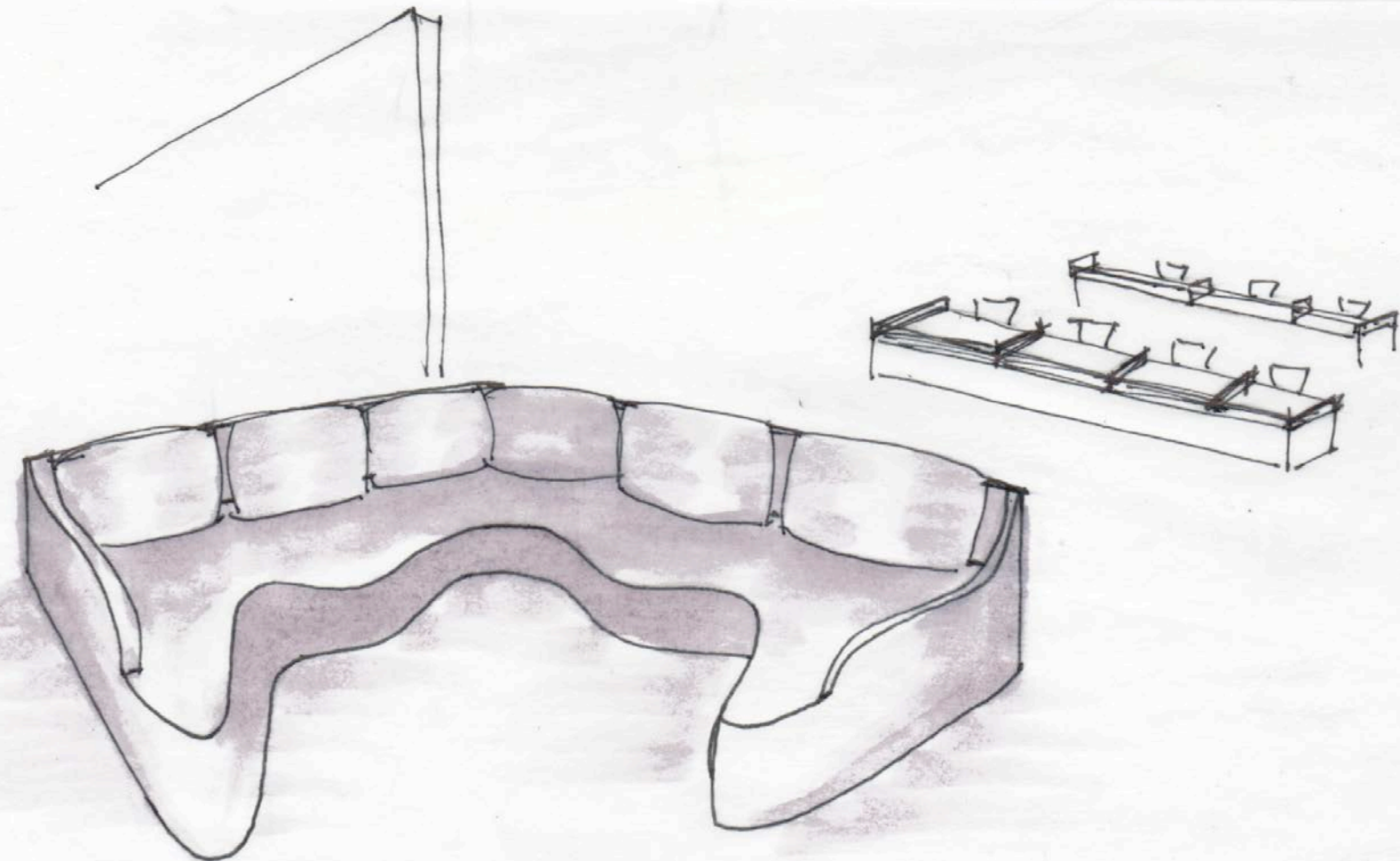
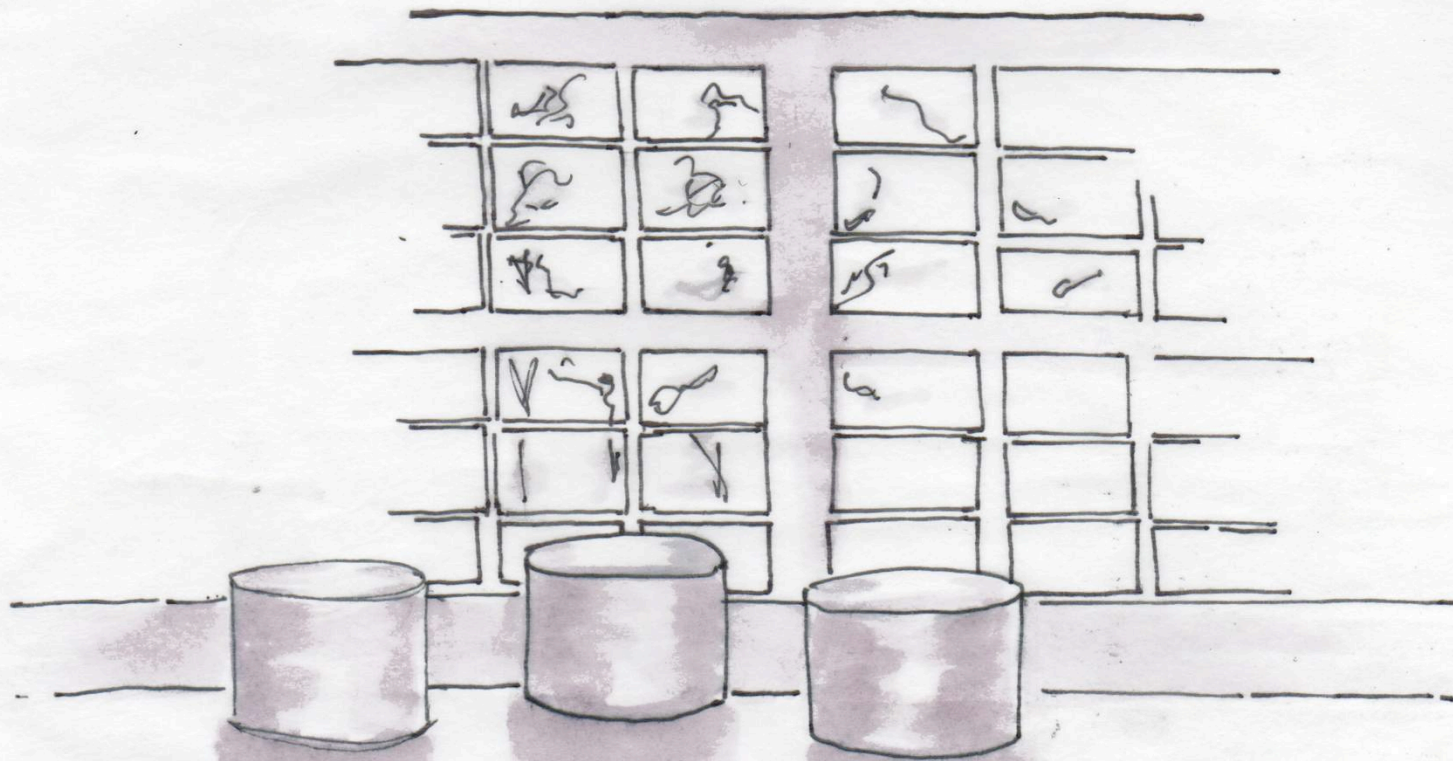
SKETCHES: ENTRY



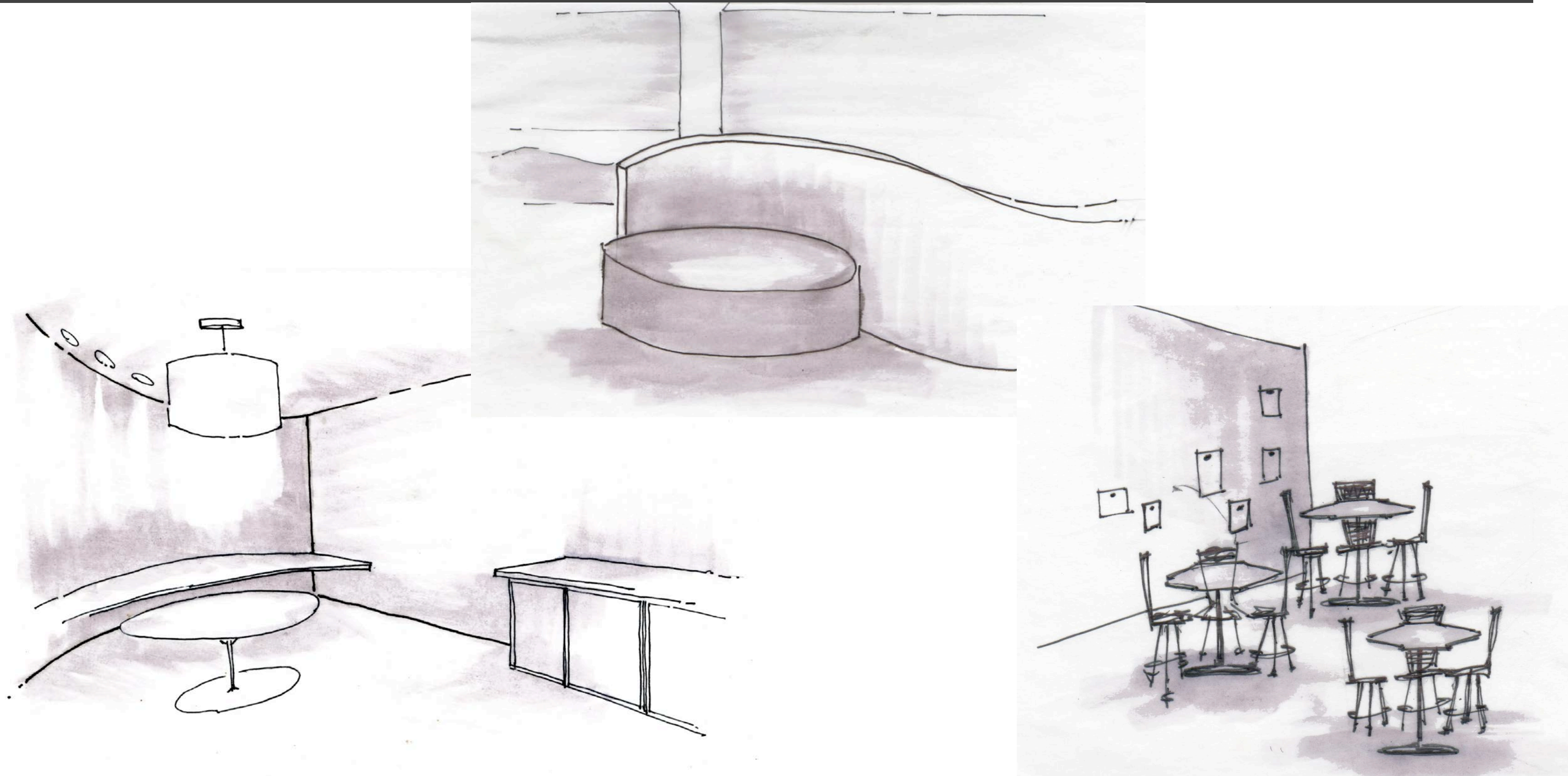
SKETCHES: MAIN CORRIDOR



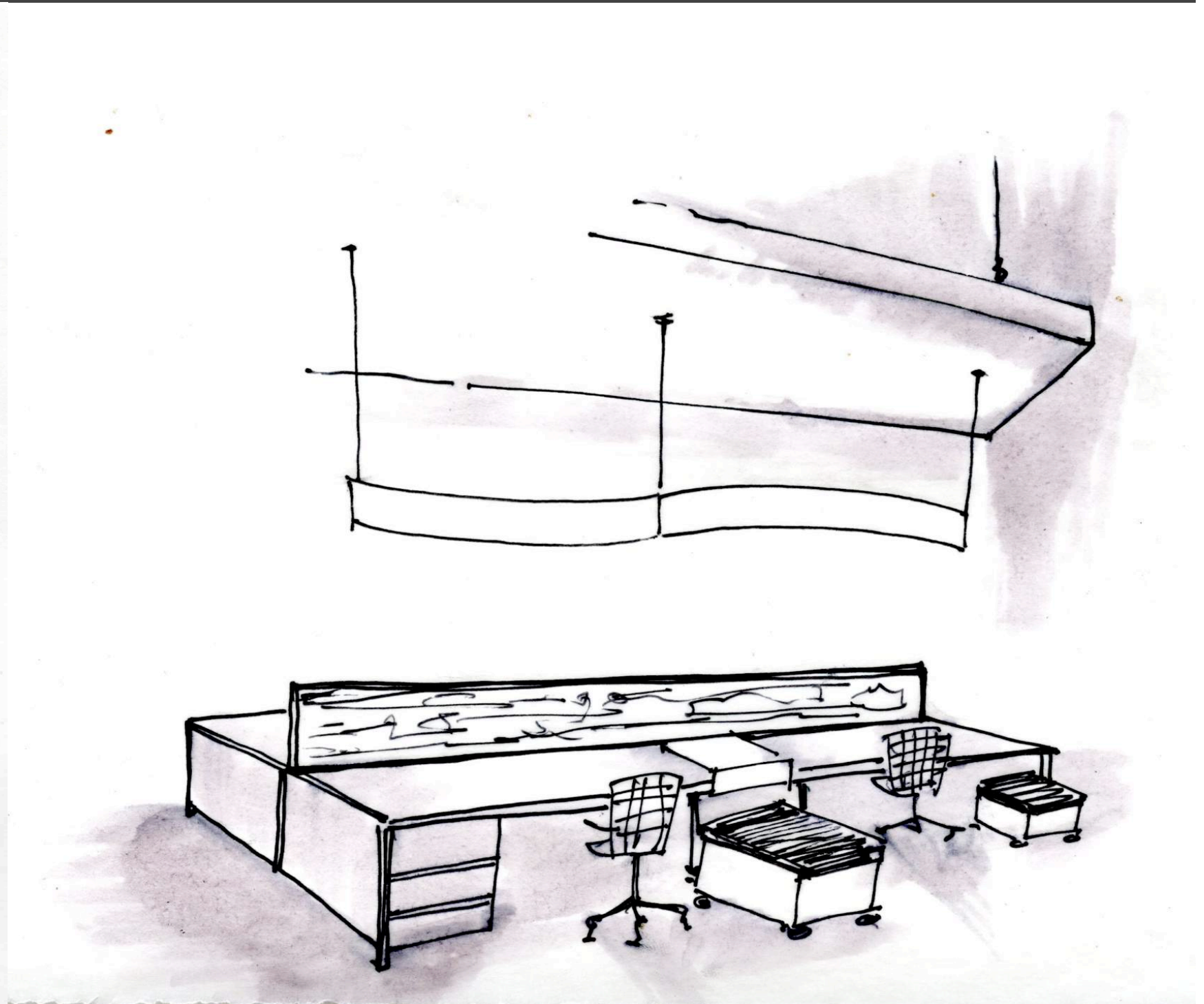
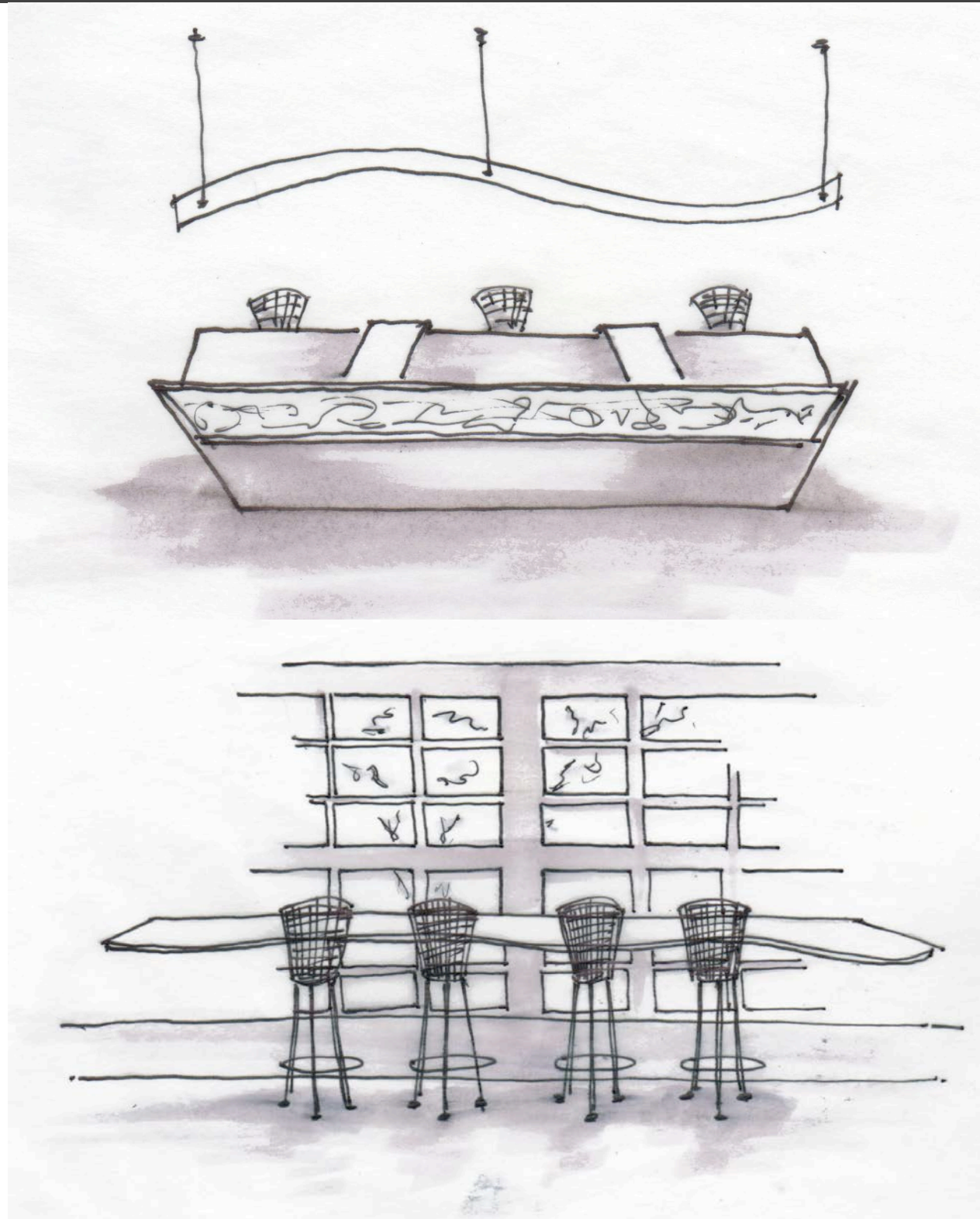
SKETCHES: LOUNGE SPACES



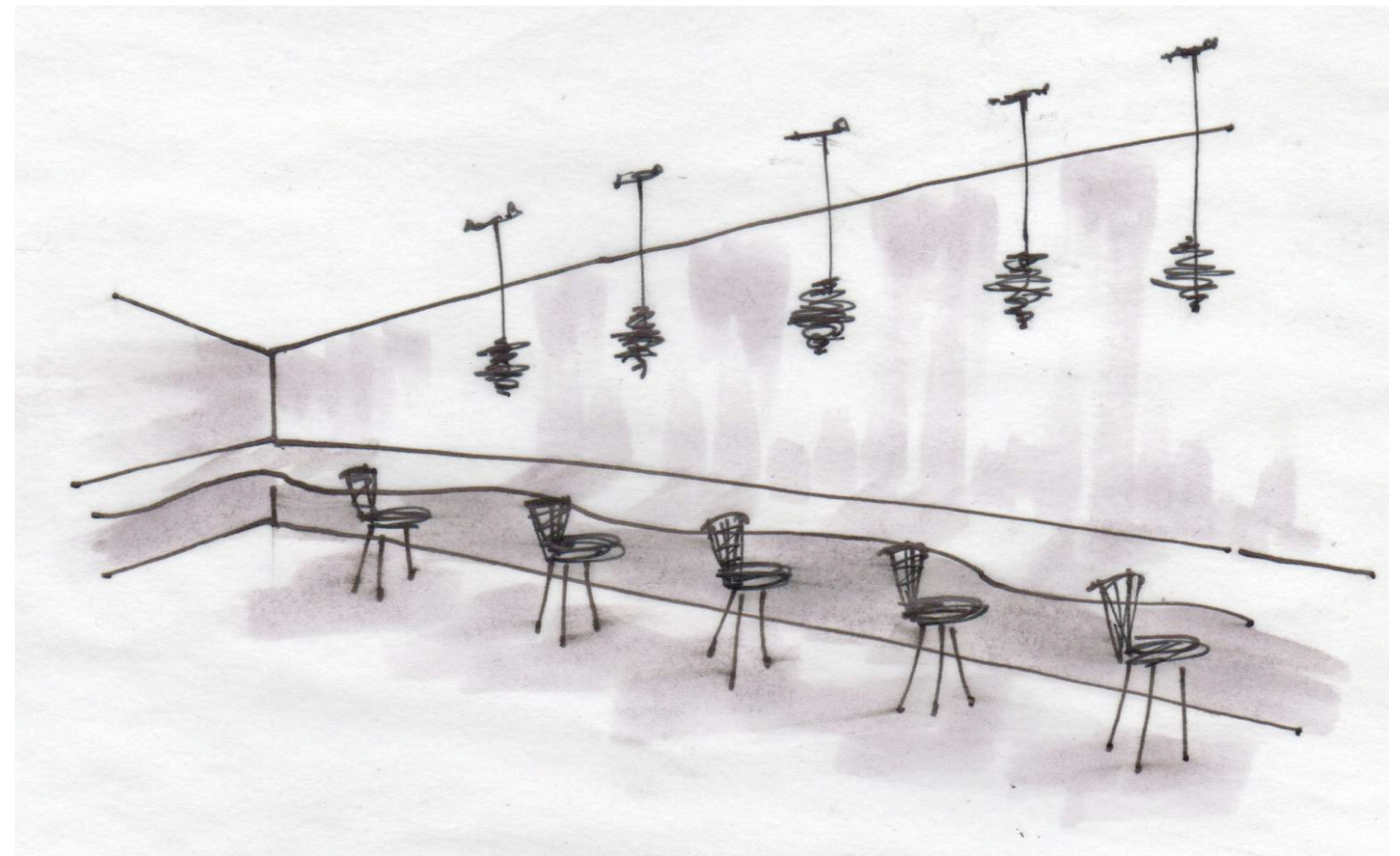
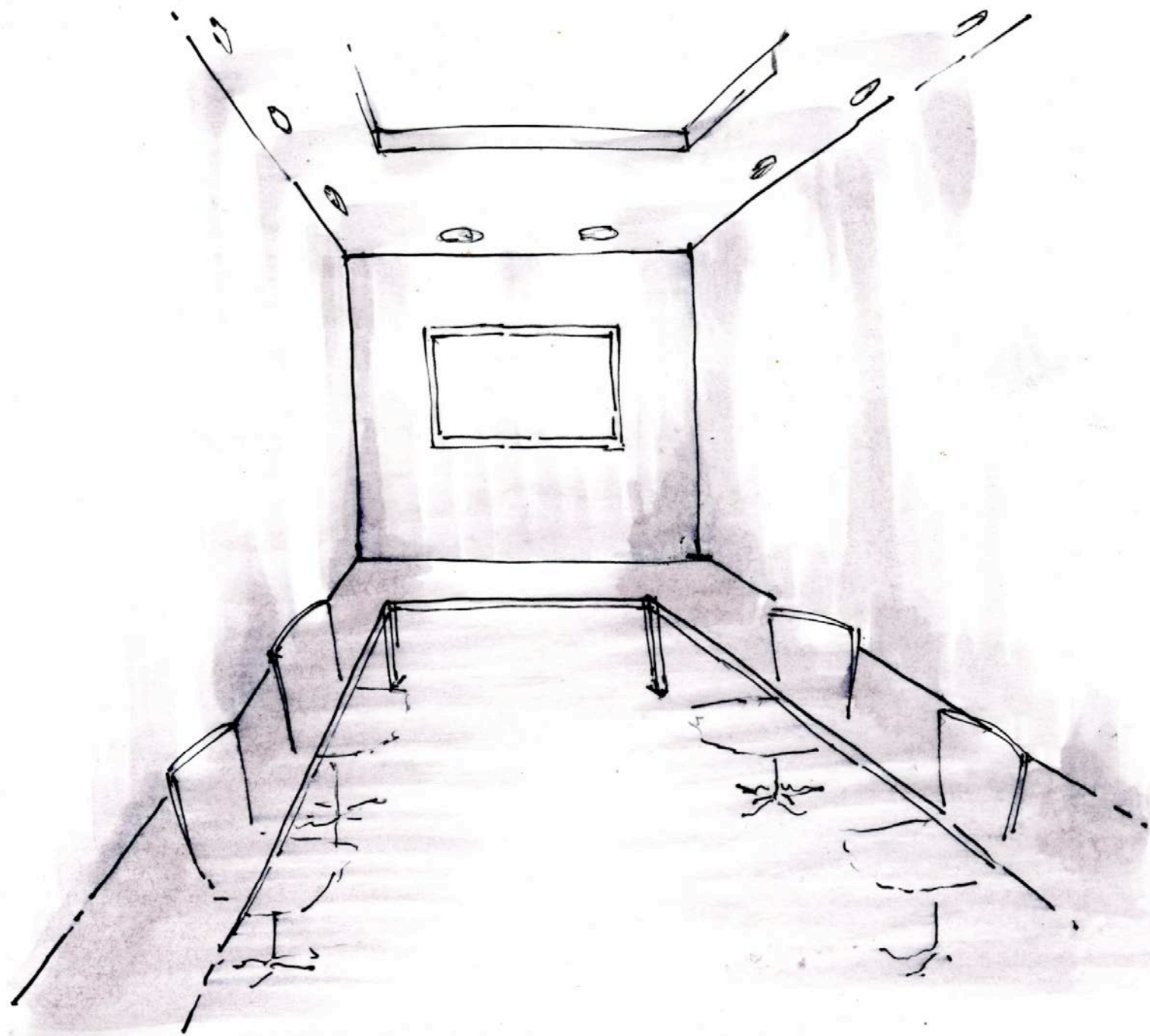
SKETCHES: LOUNGE SPACES



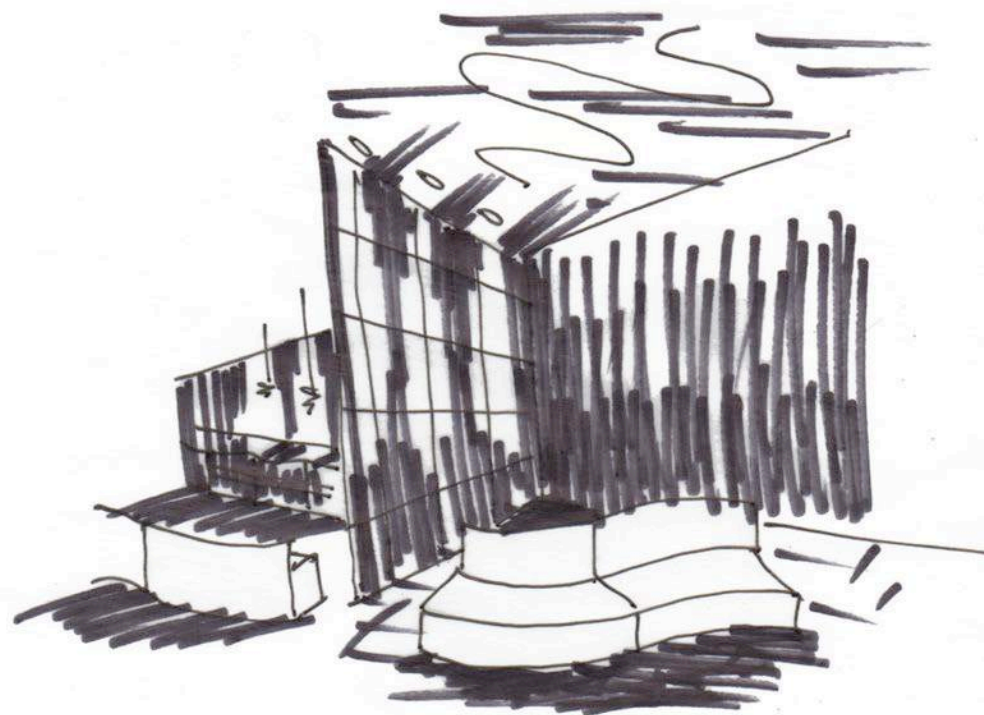
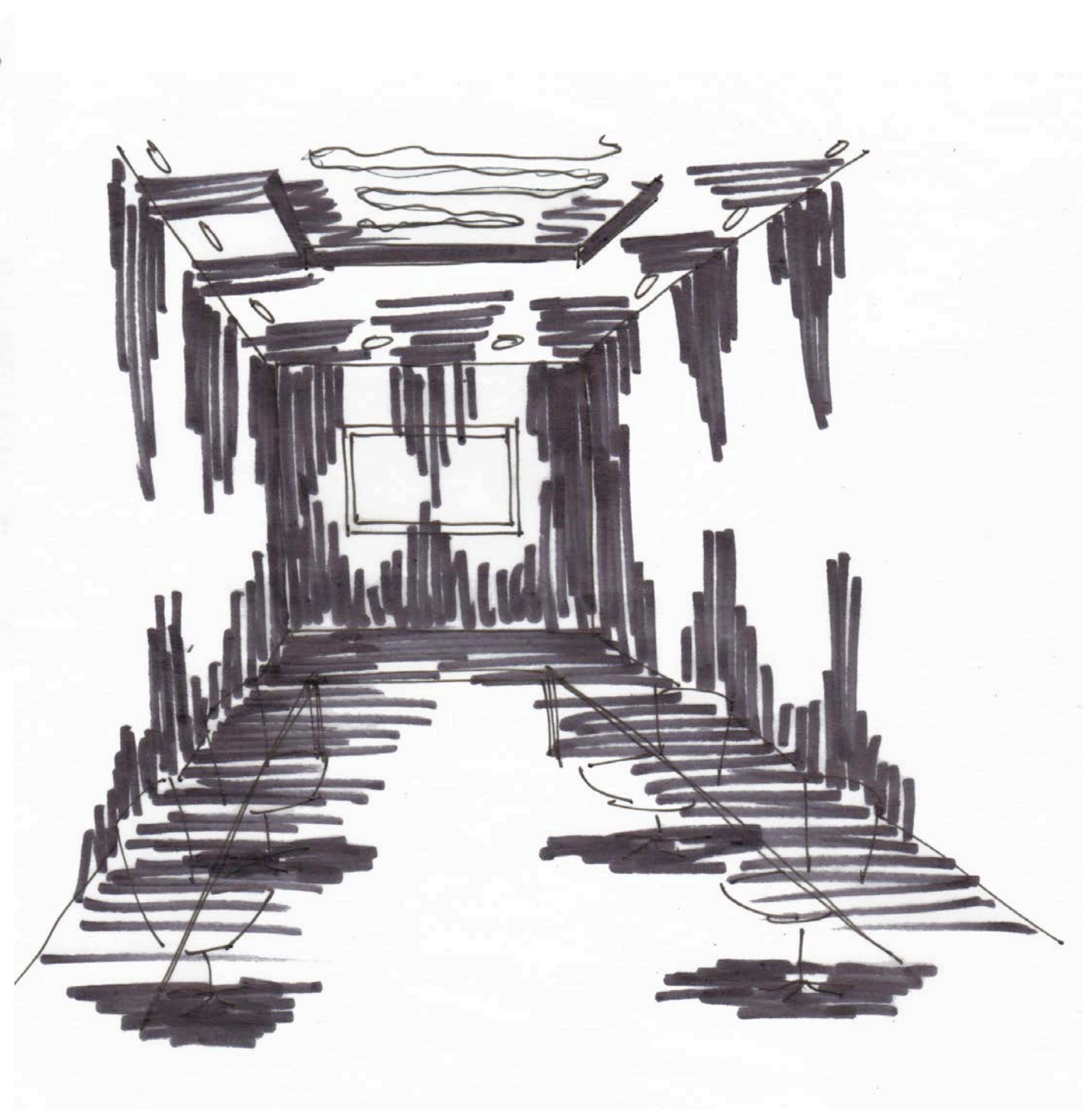
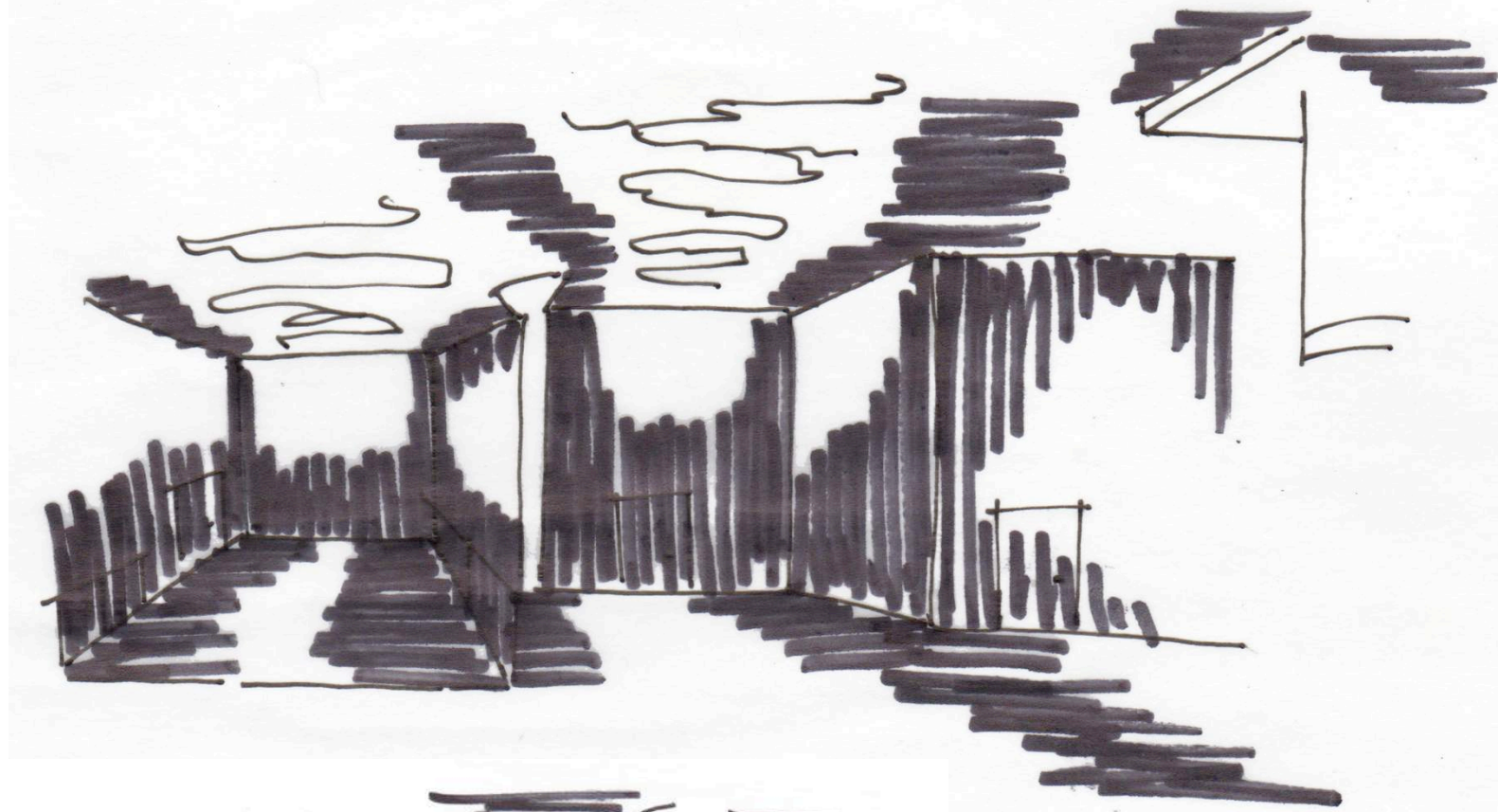
SKETCHES: WORK AREAS



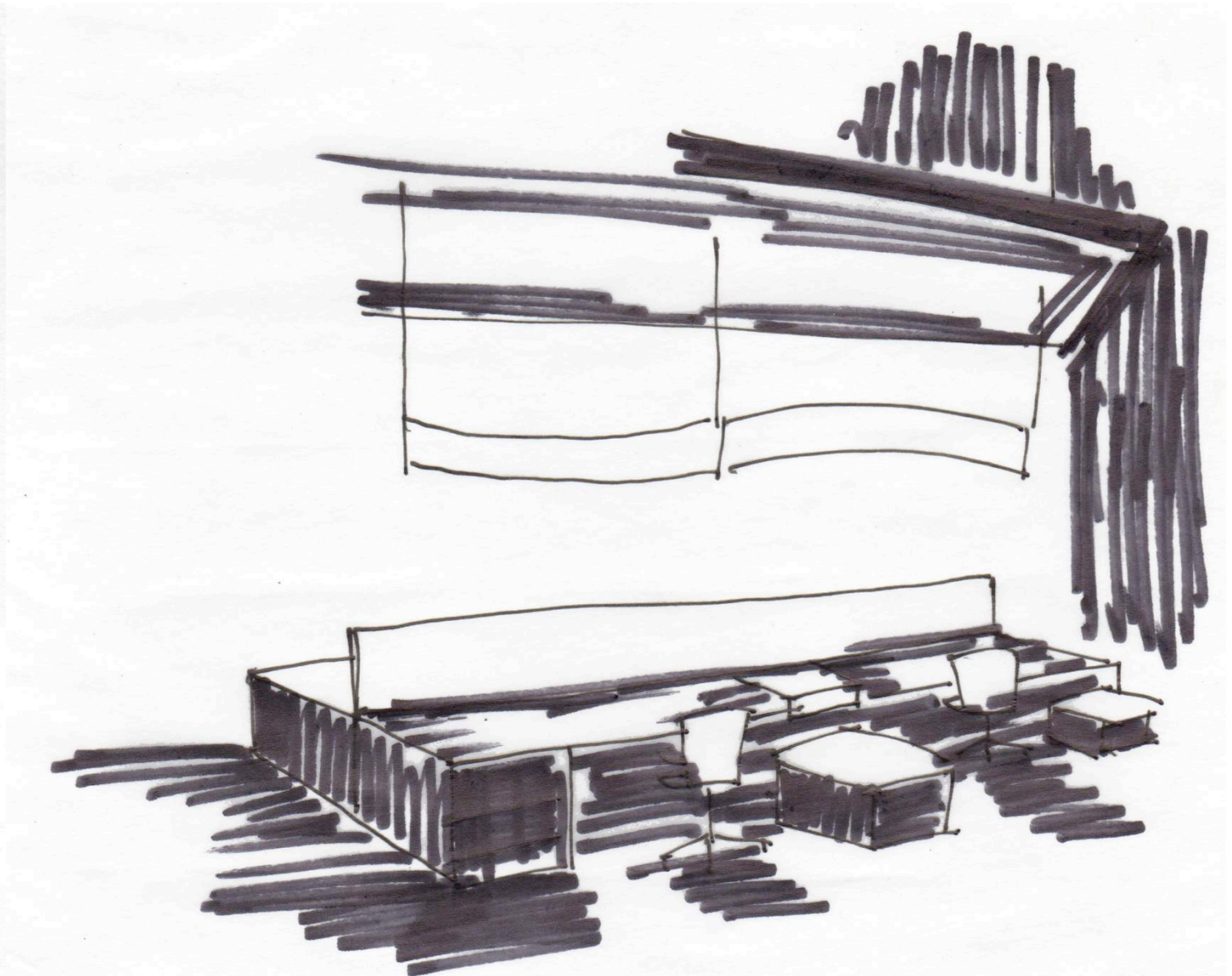
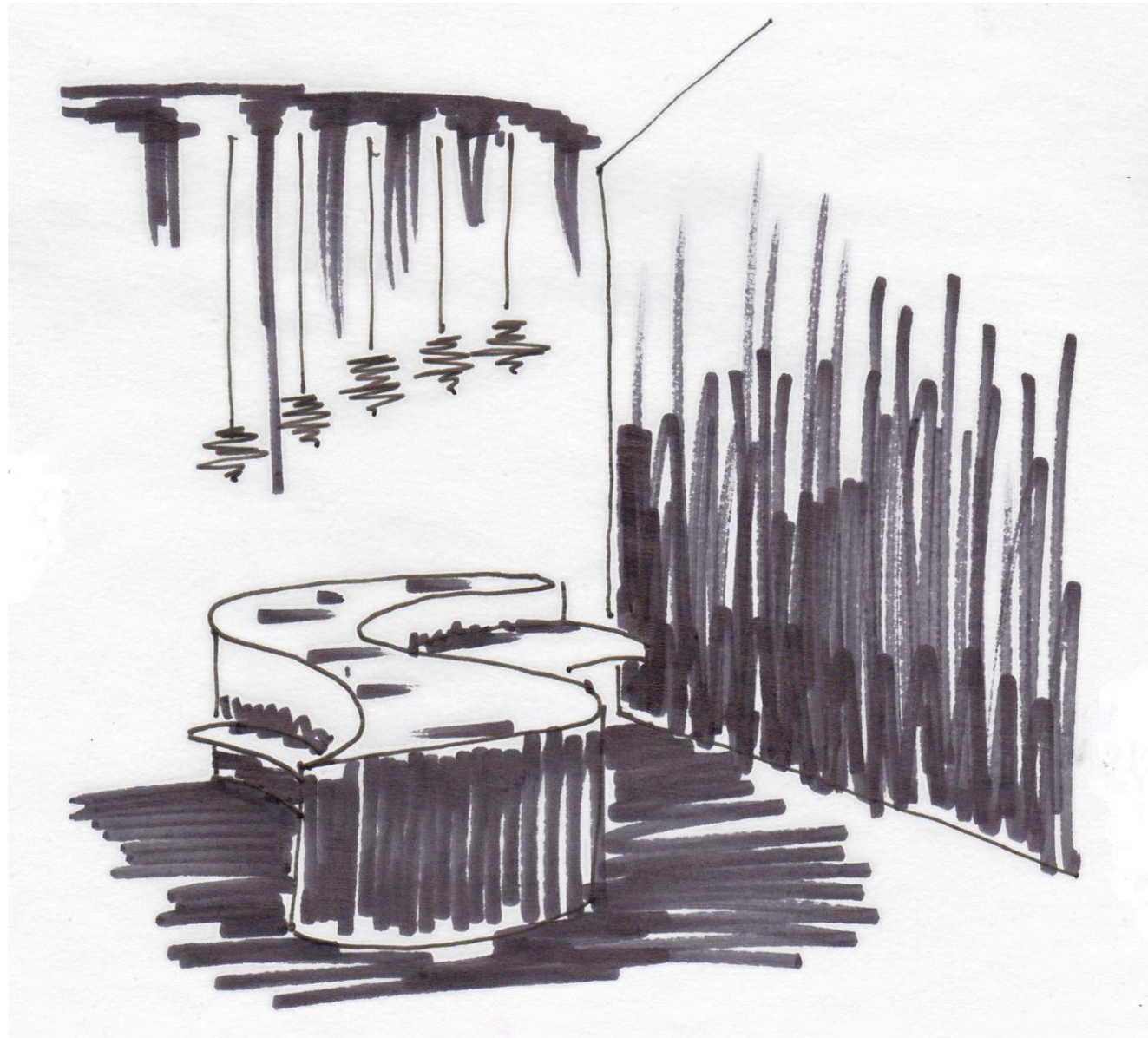
SKETCHES: WORK AREAS



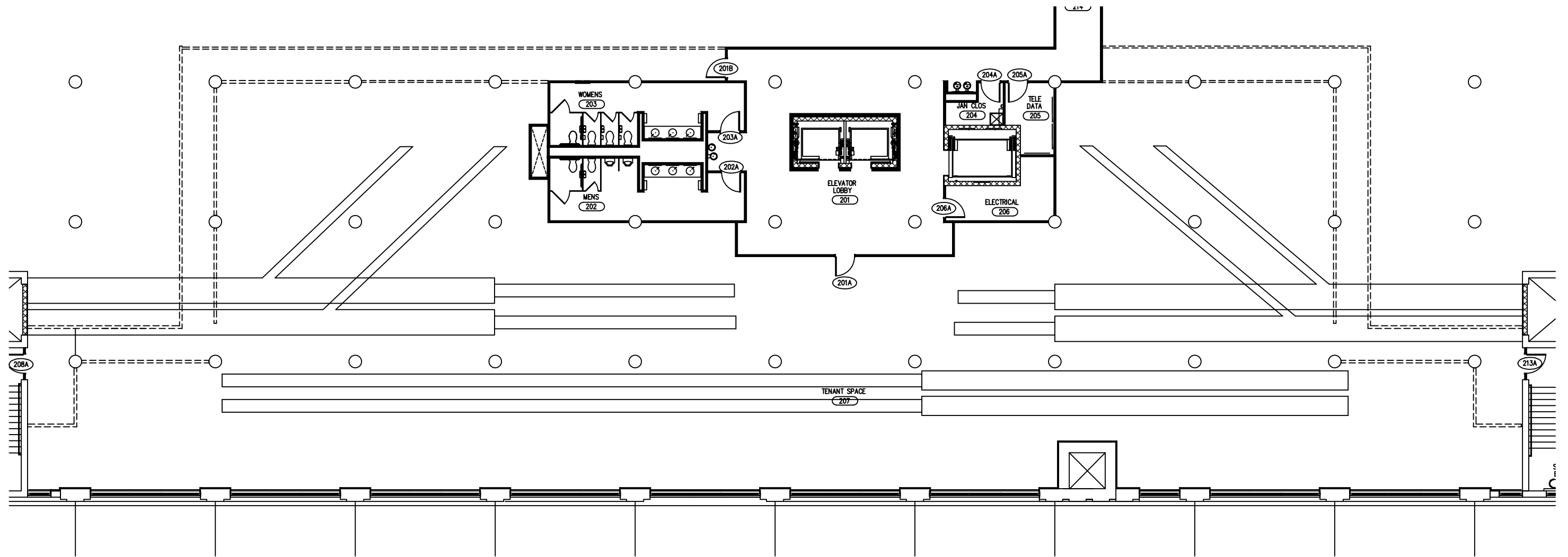
LIGHT STUDIES



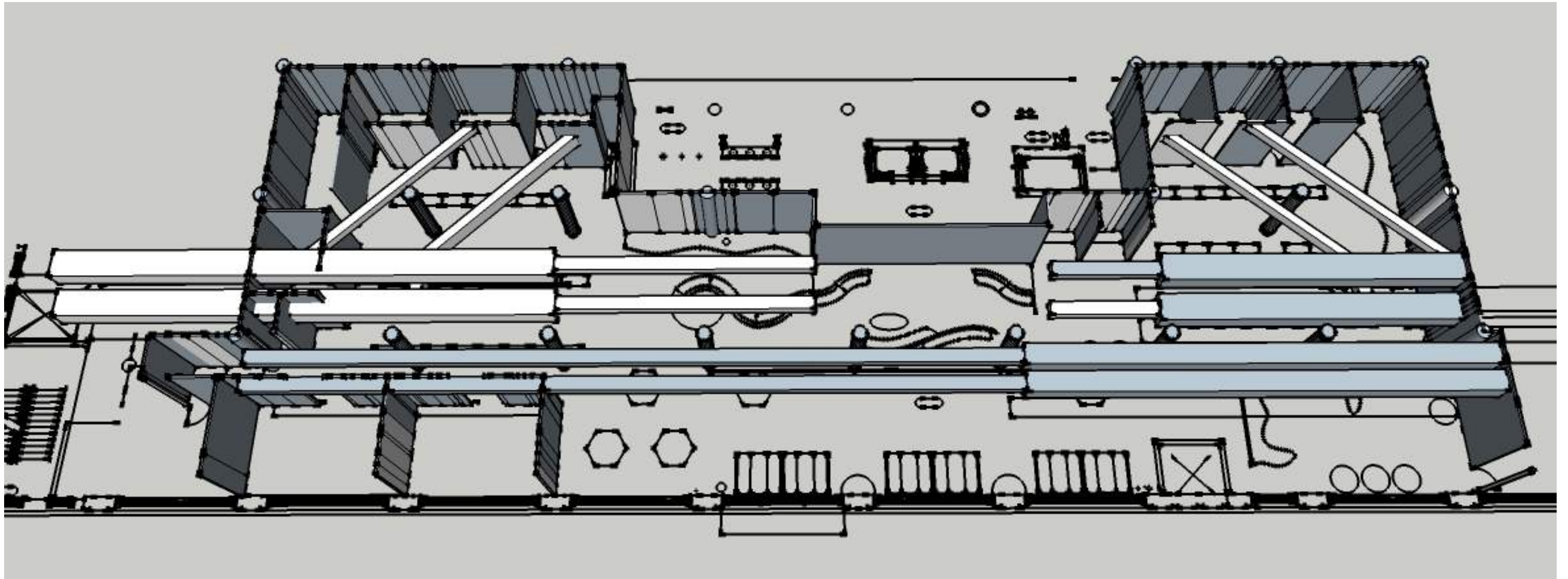
LIGHT STUDIES



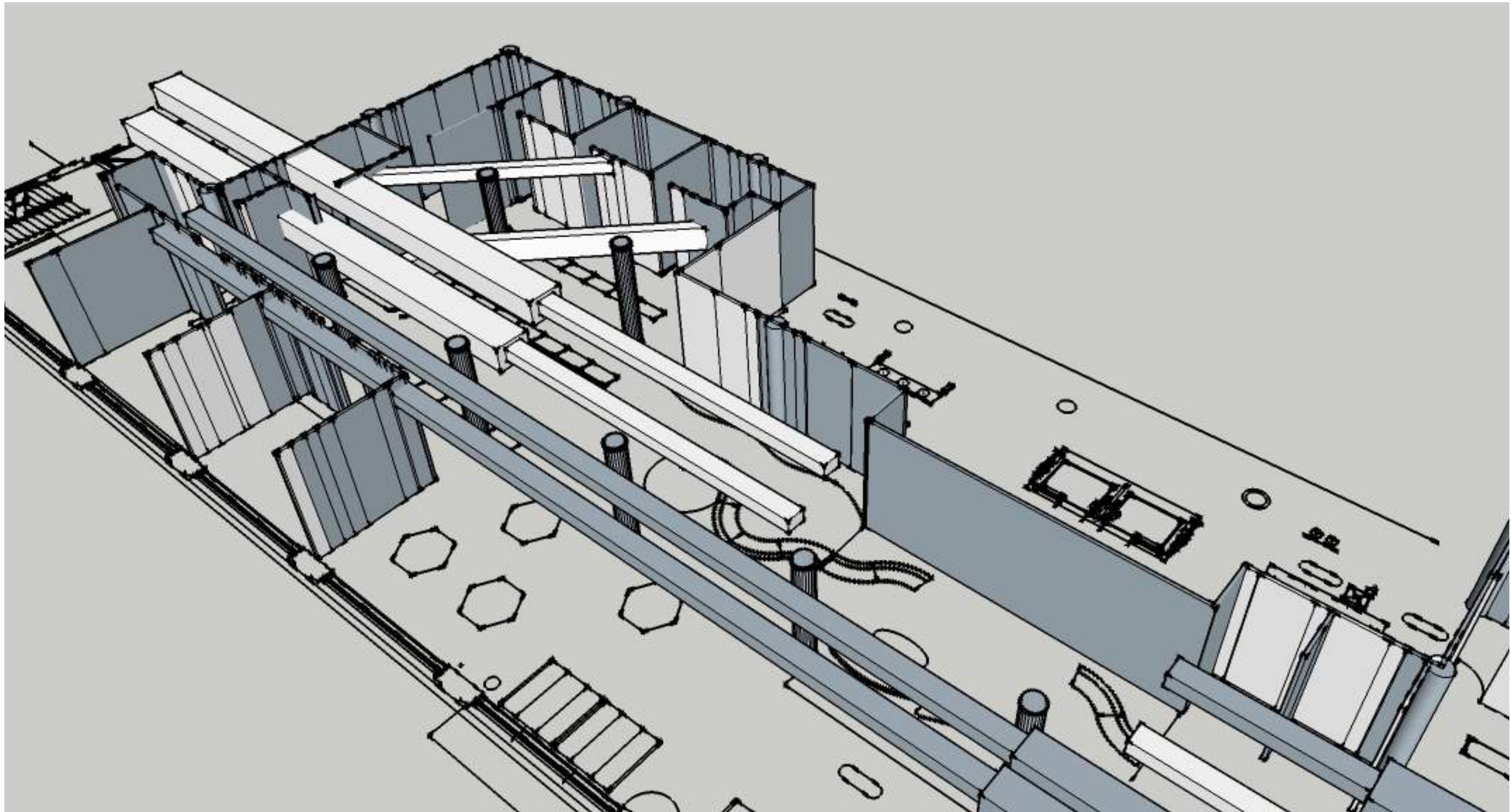
SYSTEMS: RCP



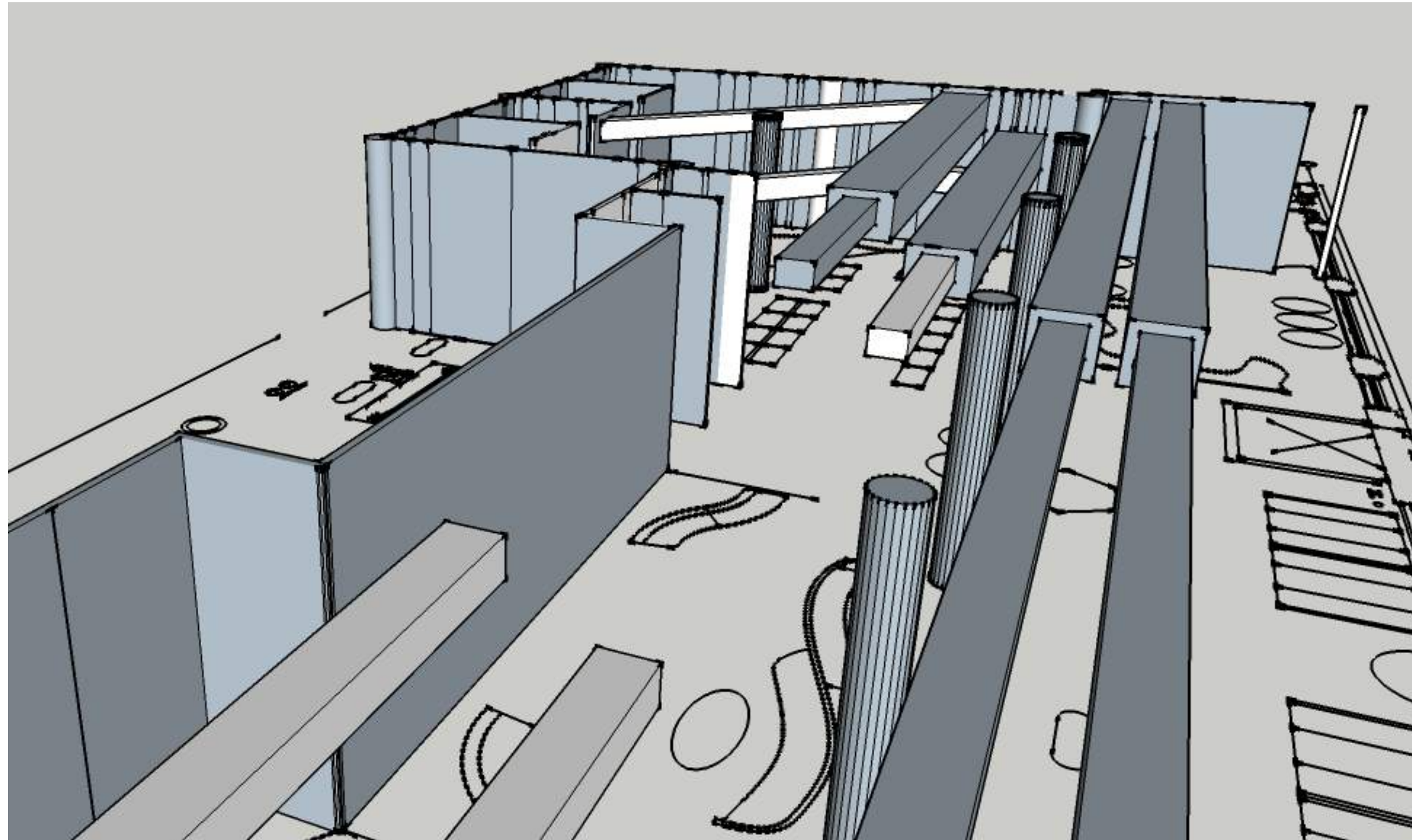
SYSTEMS: DUCTWORK



SYSTEMS: DUCTWORK



SYSTEMS: DUCTWORK



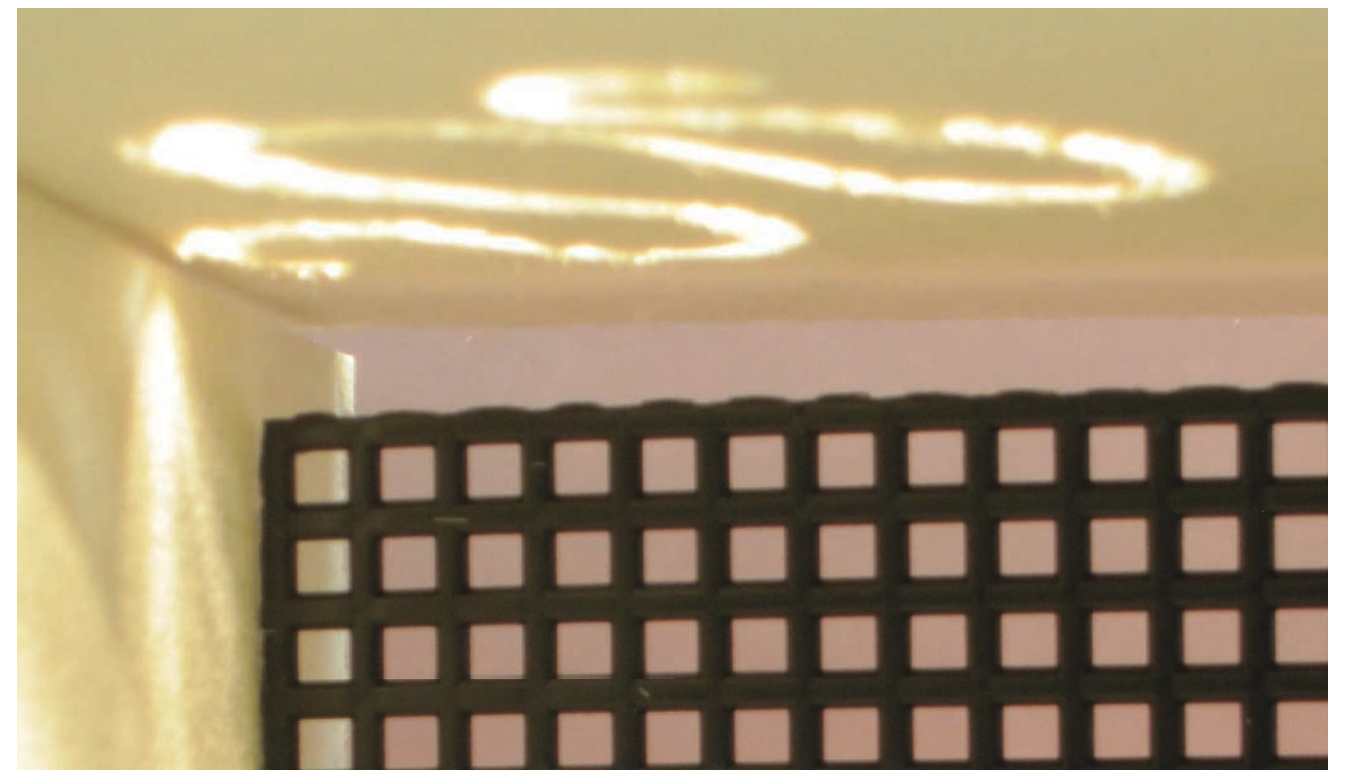
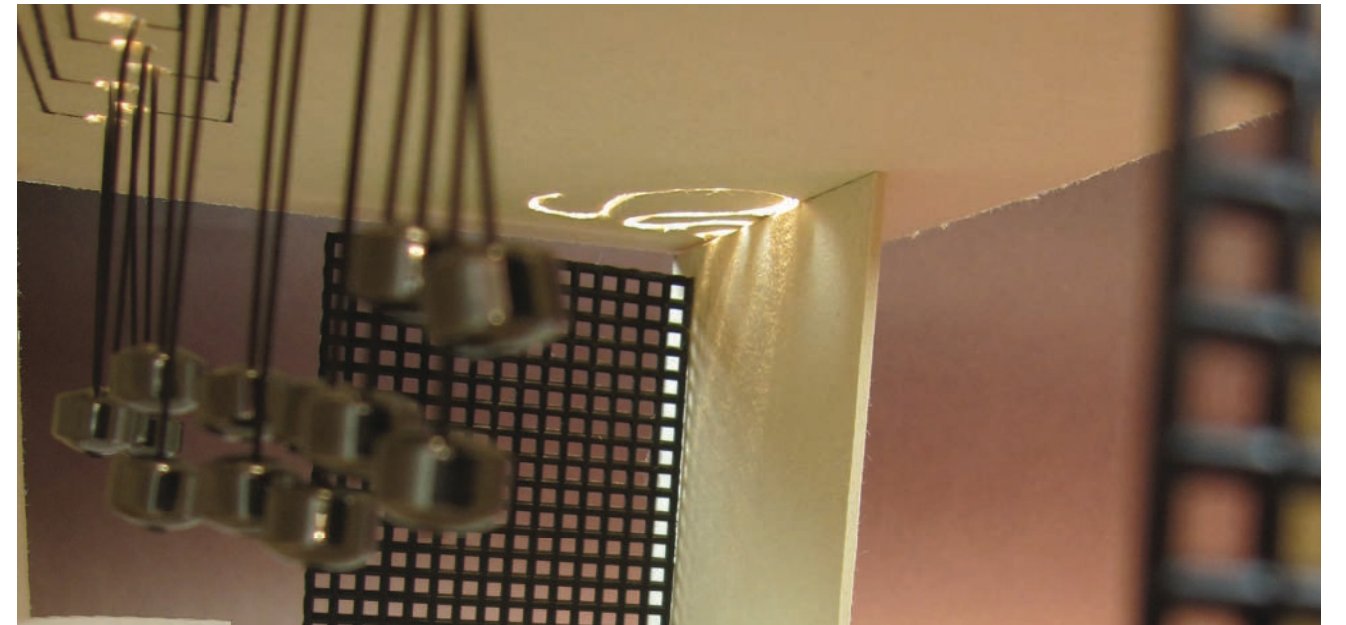
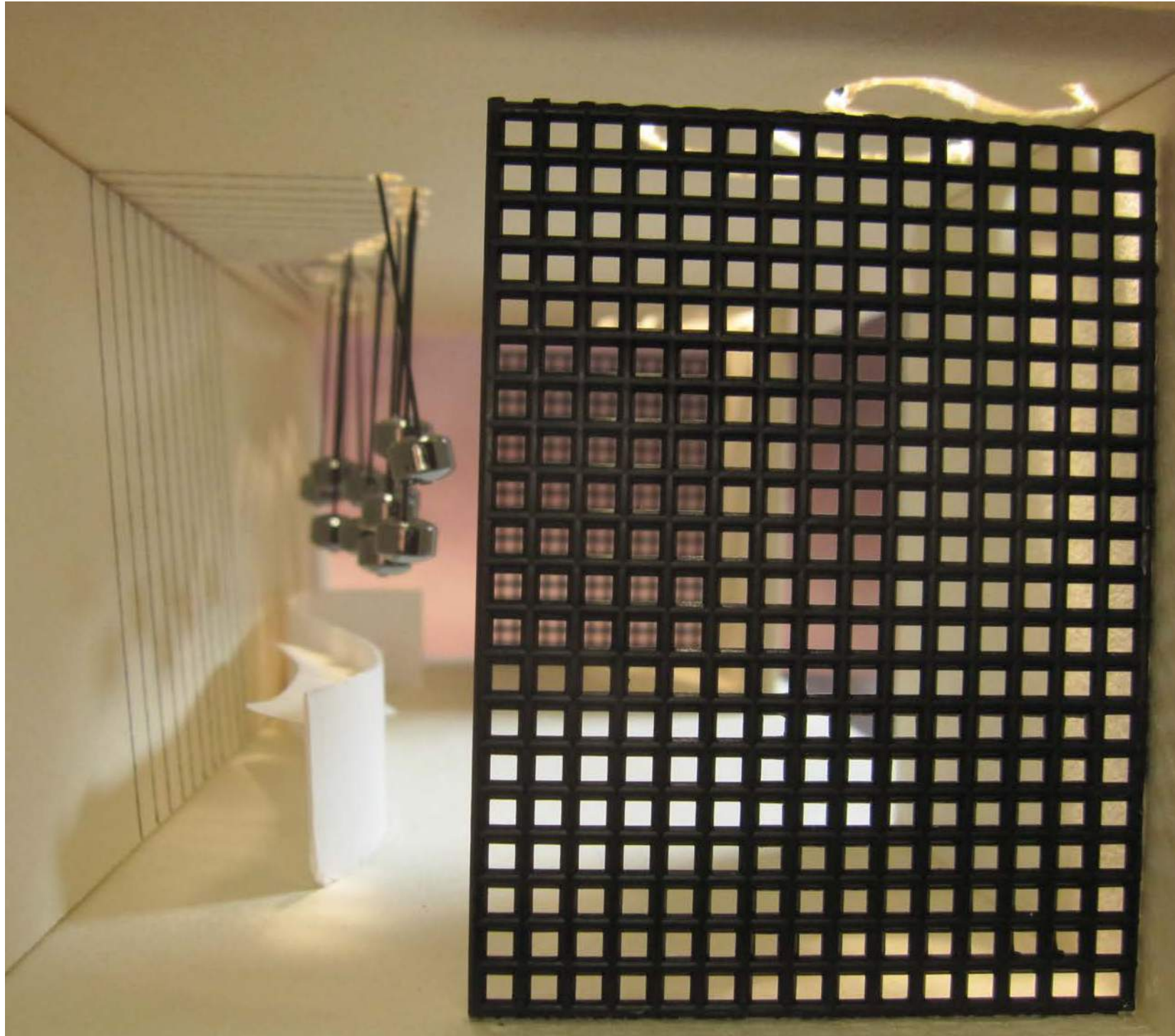
SYSTEMS: DUCTWORK



LIGHTING MODEL: RECEPTION



LIGHTING MODEL: RECEPTION



SUSTAINABILITY STATEMENT

CAPTURING EMBODIED ENERGY THROUGH ADAPTIVE REUSE, CREATING THIS OFFICE SPACE IN AN EXISTING BUILDING, THERE WILL BE A SMALLER IMPACT ON THE ENVIRONMENT. THERE WILL BE FEWER MATERIALS USED AND THEREFORE, LESS WASTE. MATERIALS WILL BE DURABLE, BIODEGRADABLE, AND/OR RECYCLABLE. BUILDING COMMISSIONING WILL TAKE PLACE TO ENSURE OPTIMAL PERFORMANCE AND A REDUCTION IN ENERGY CONSUMPTION.

