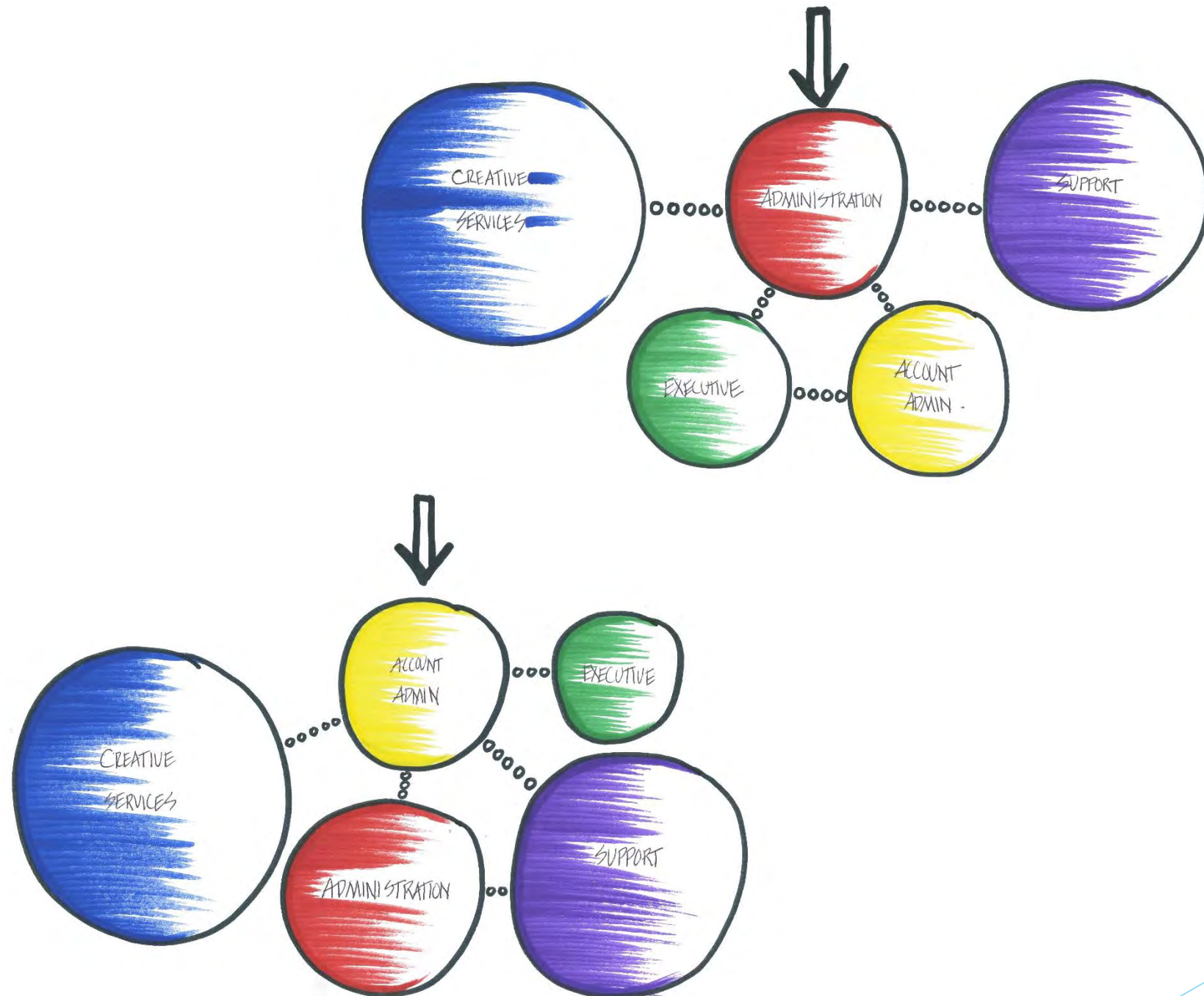
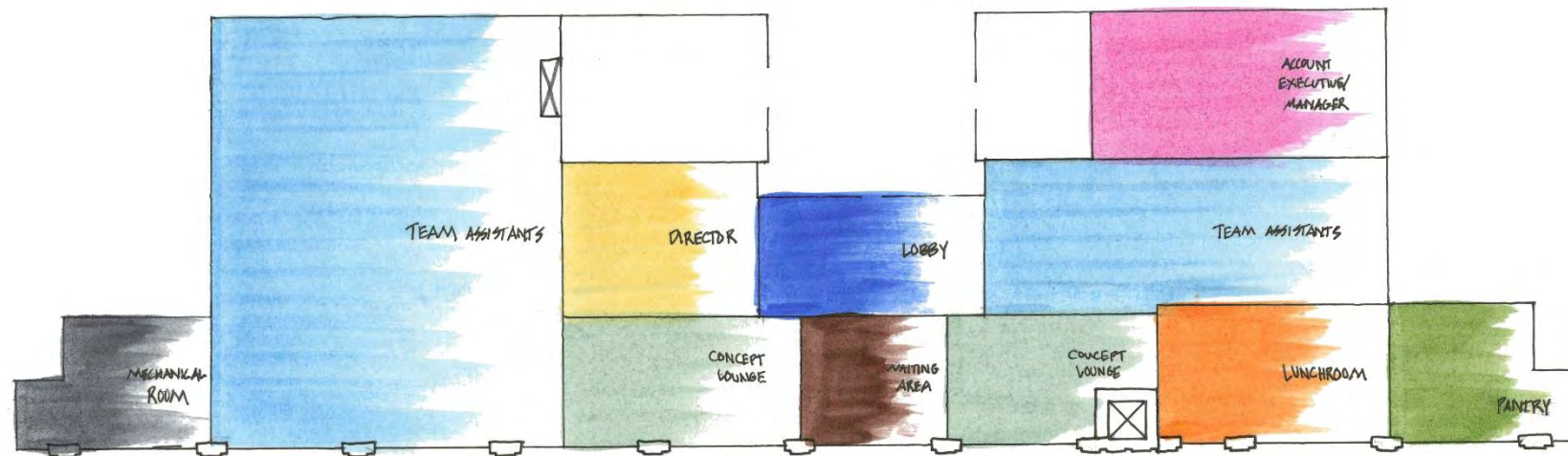
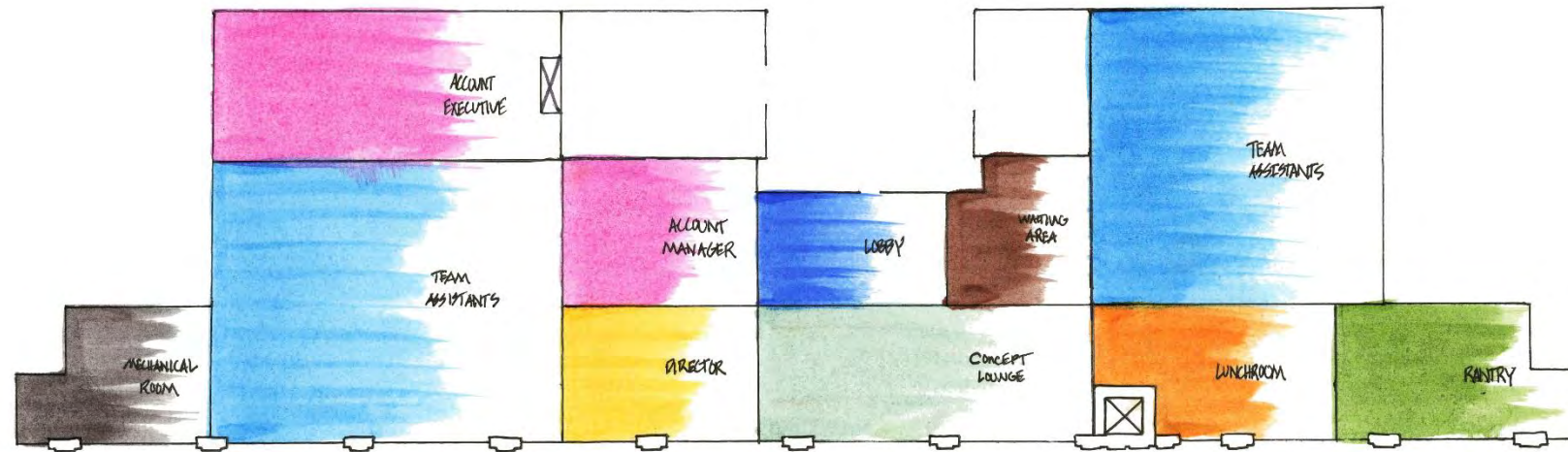


PORTFOLIO 2
IDSN 3600
TYLER CURRIE

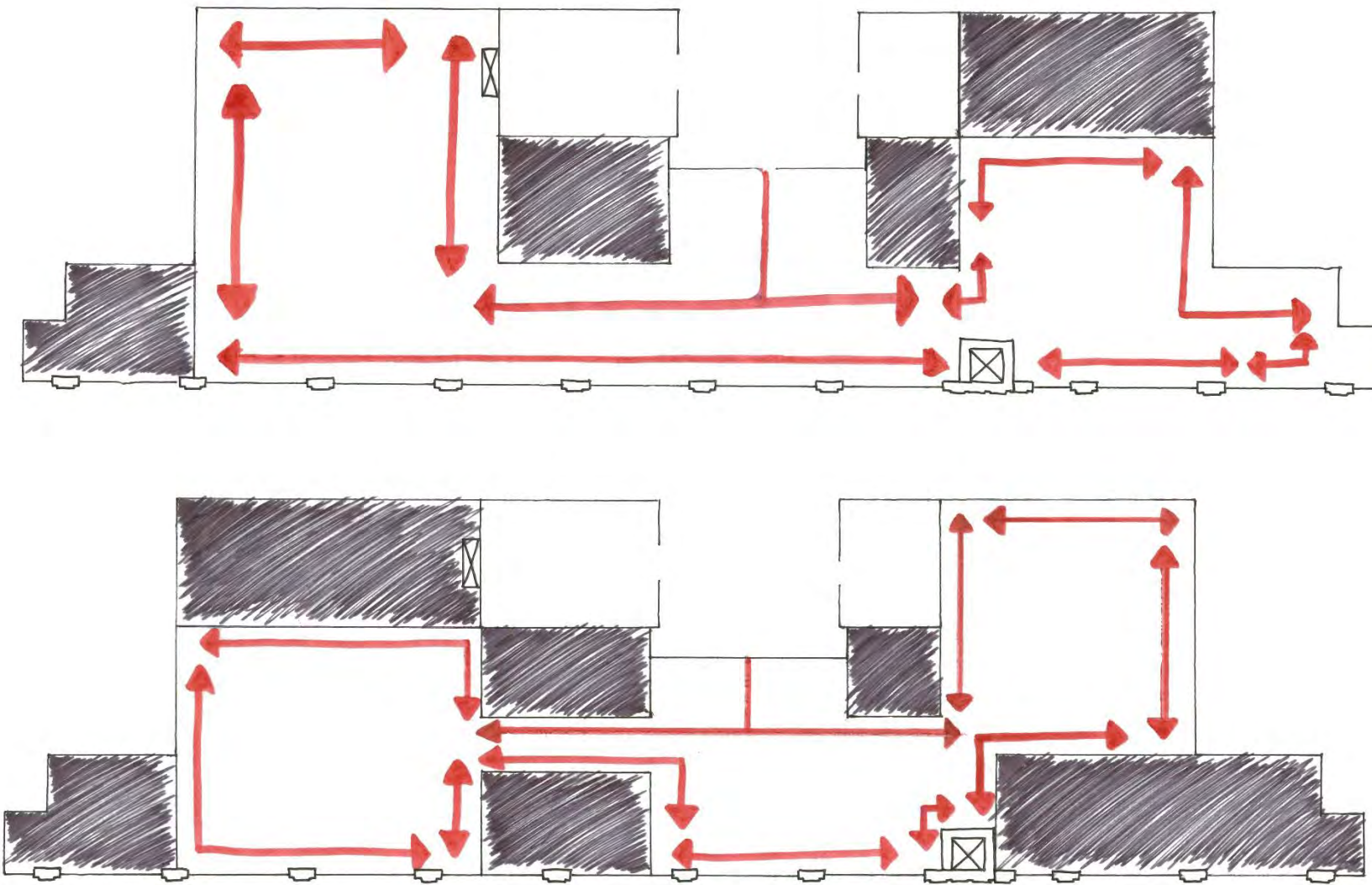
BUBBLE DIAGRAMS



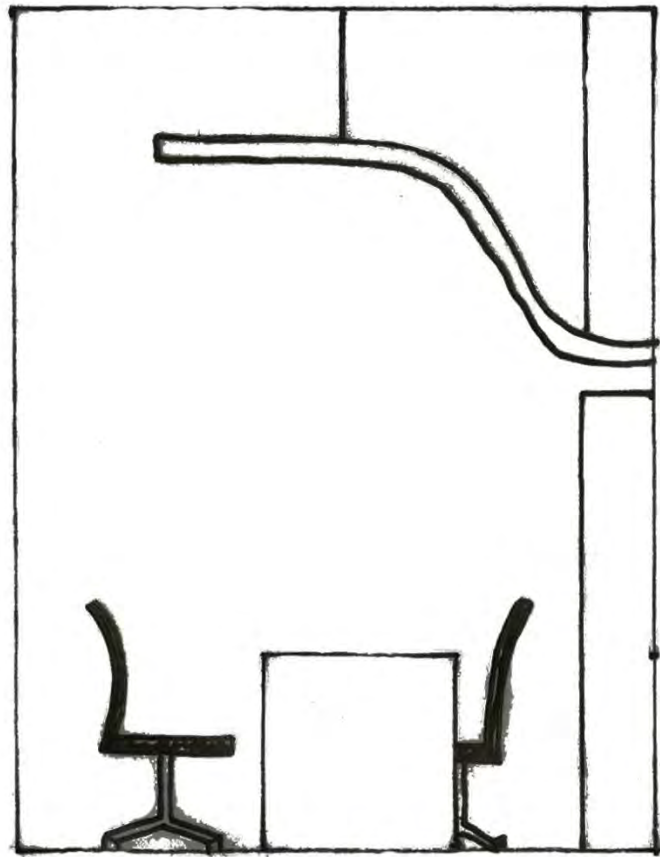
BLOCK DIAGRAMS



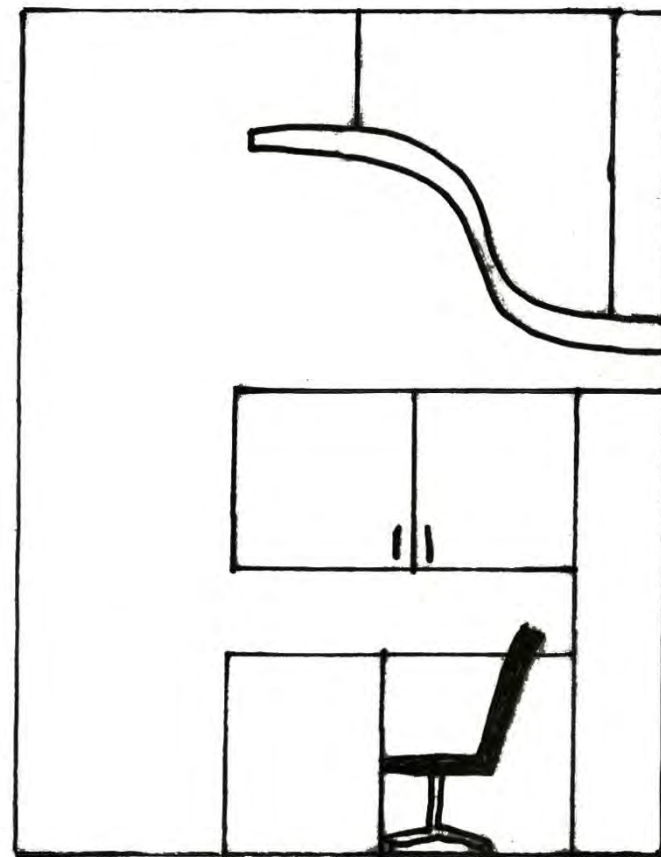
SPATIAL CONCEPT SKETCHES



SECTION SKETCHES

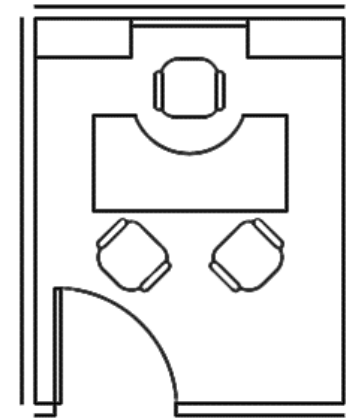
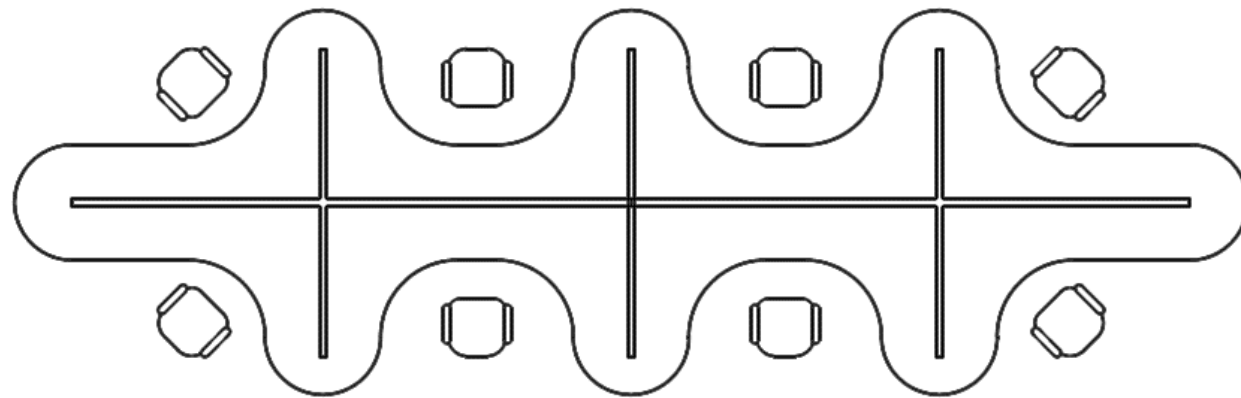
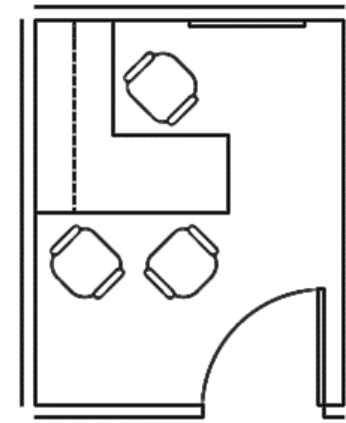
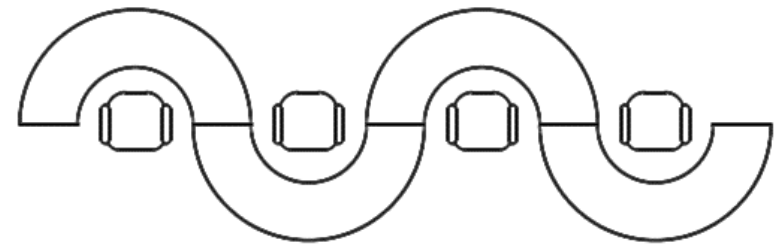


OFFICE 1

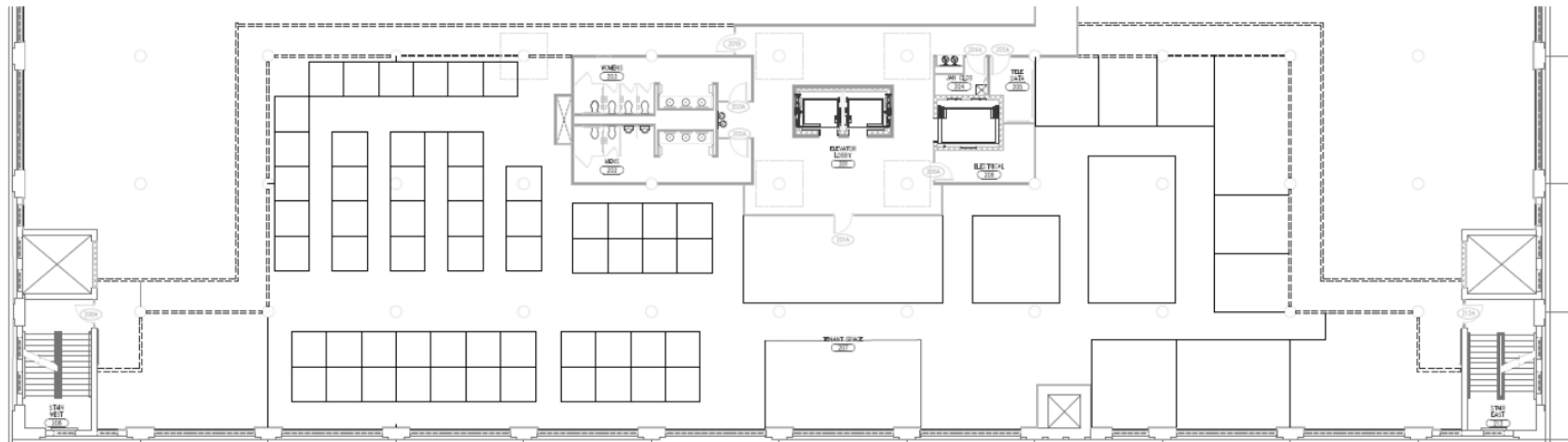
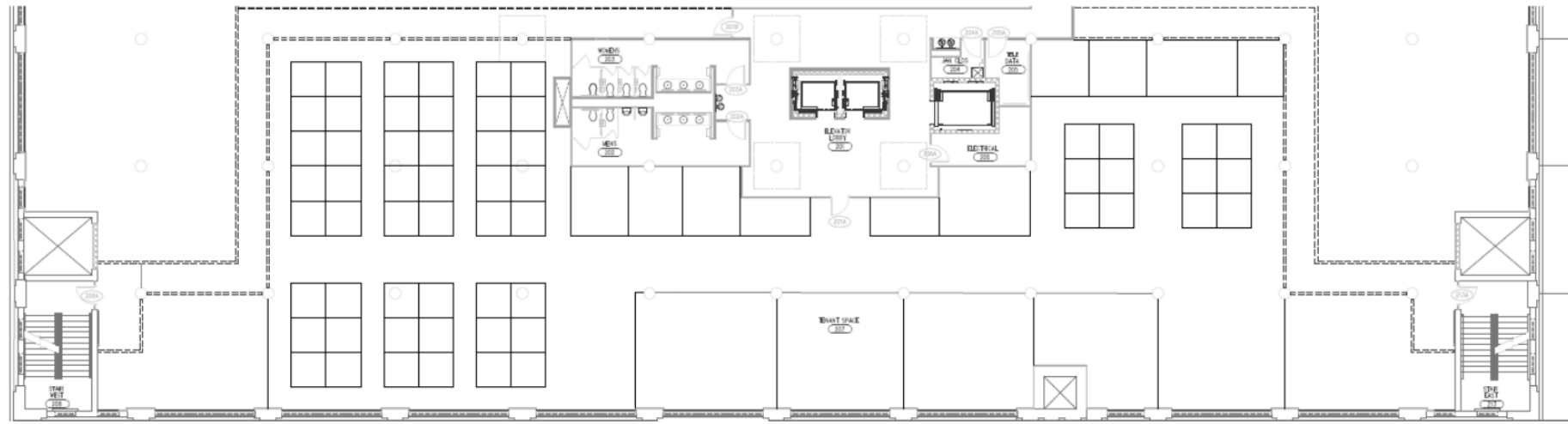


OFFICE 2

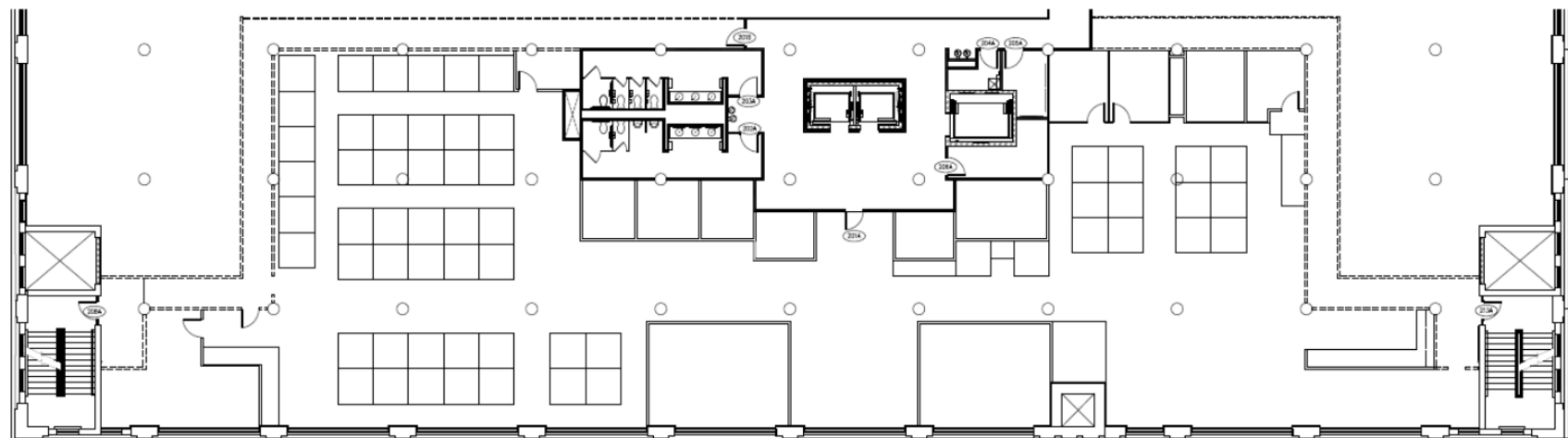
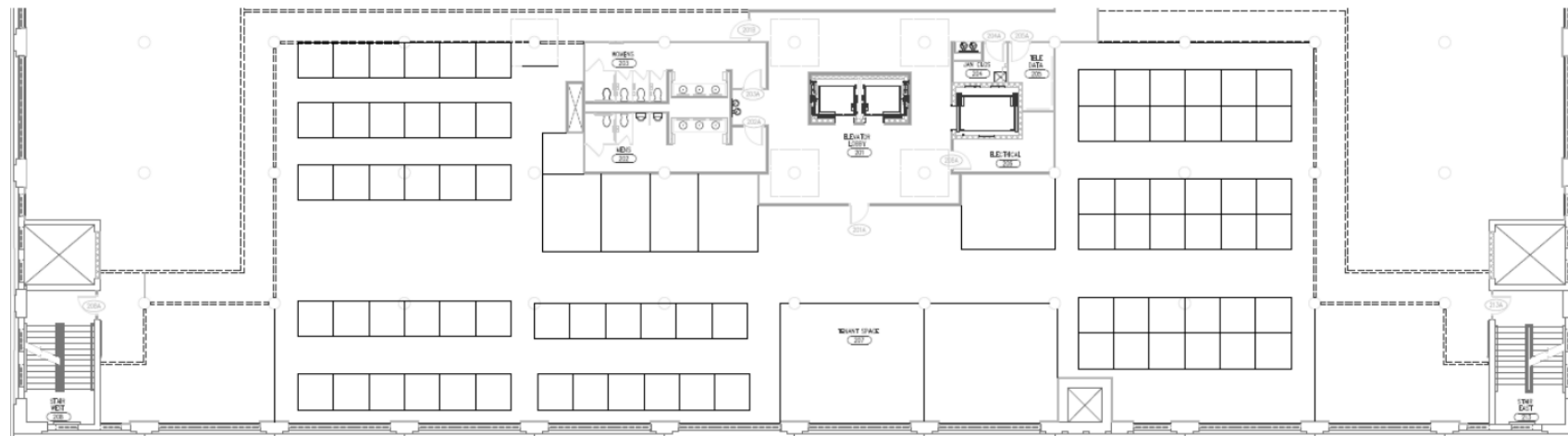
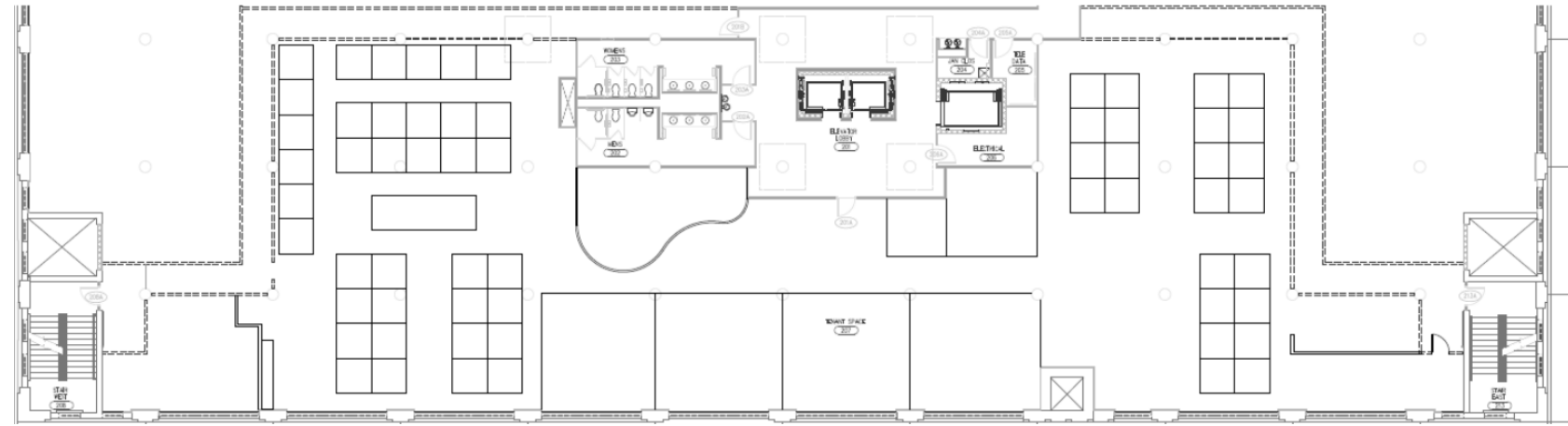
WORKSATION SKETCHES



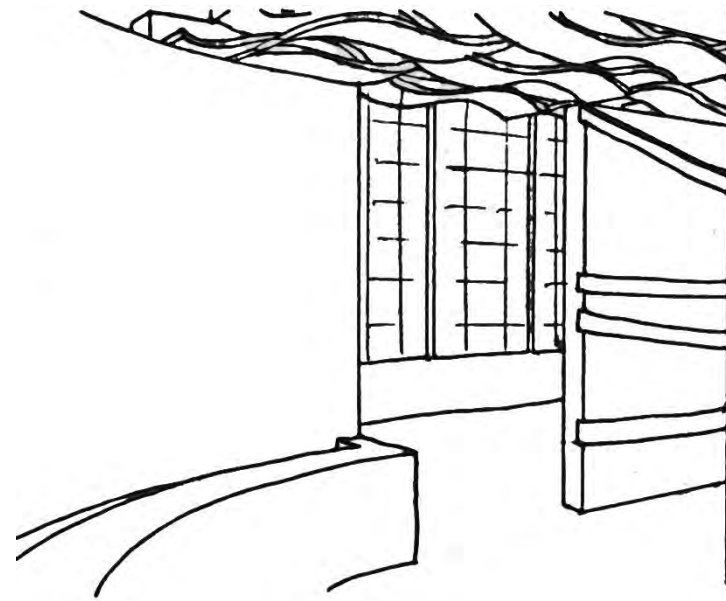
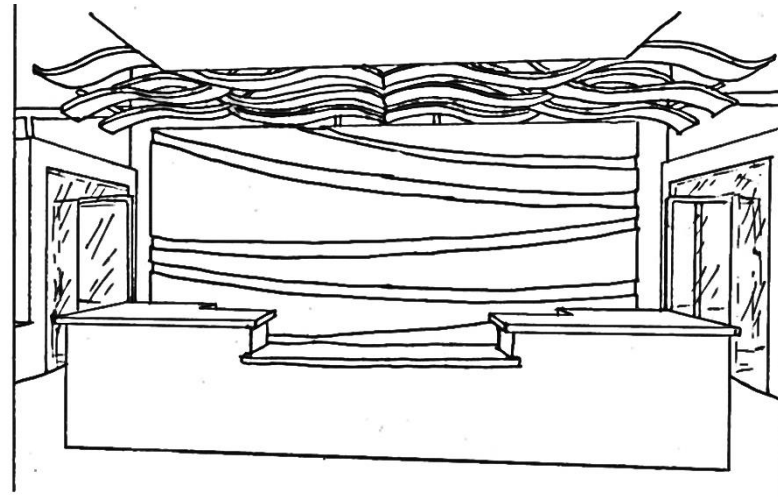
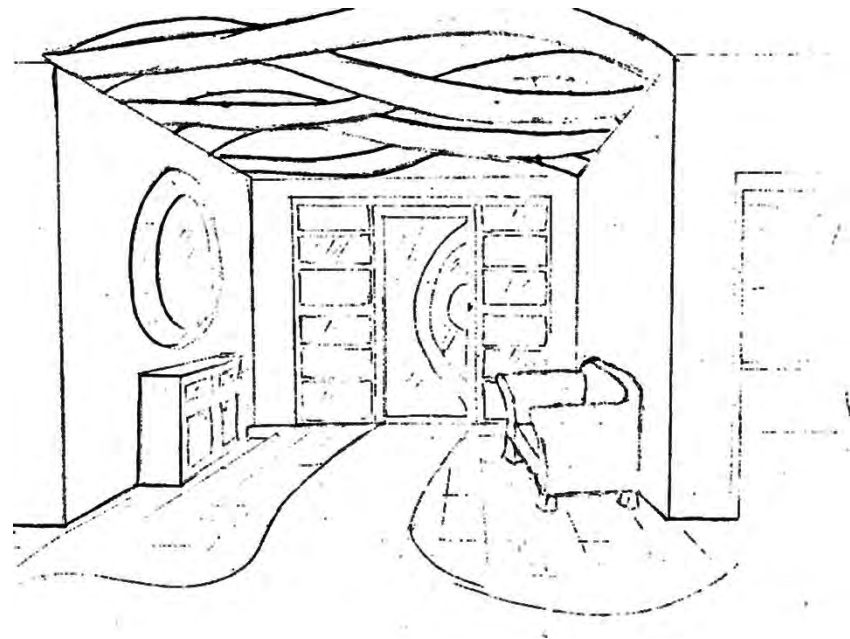
SPACE PLAN SKETCHES



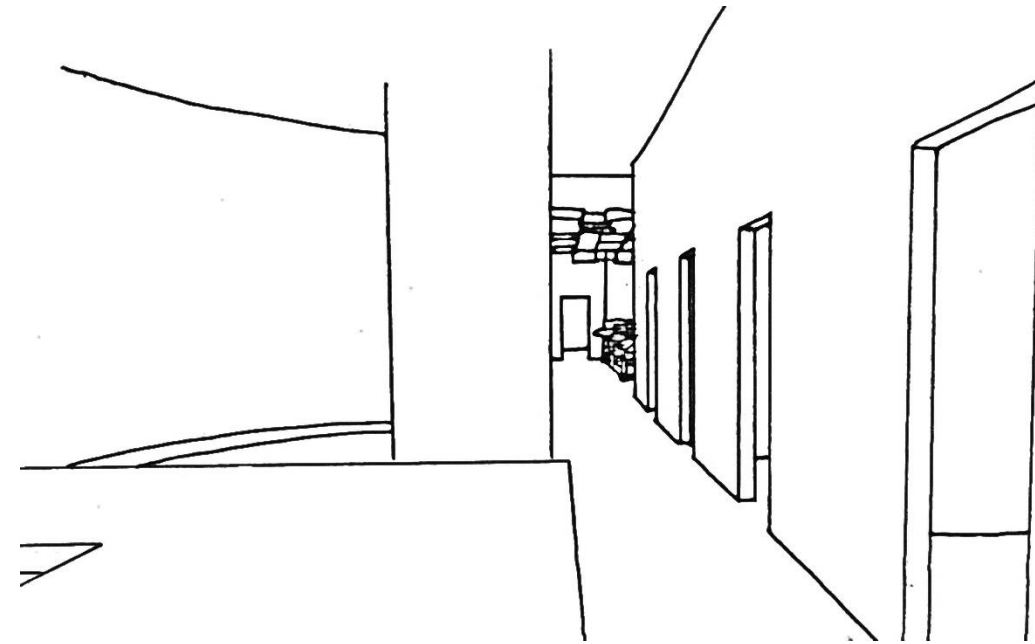
SPACE PLAN SKETCHES



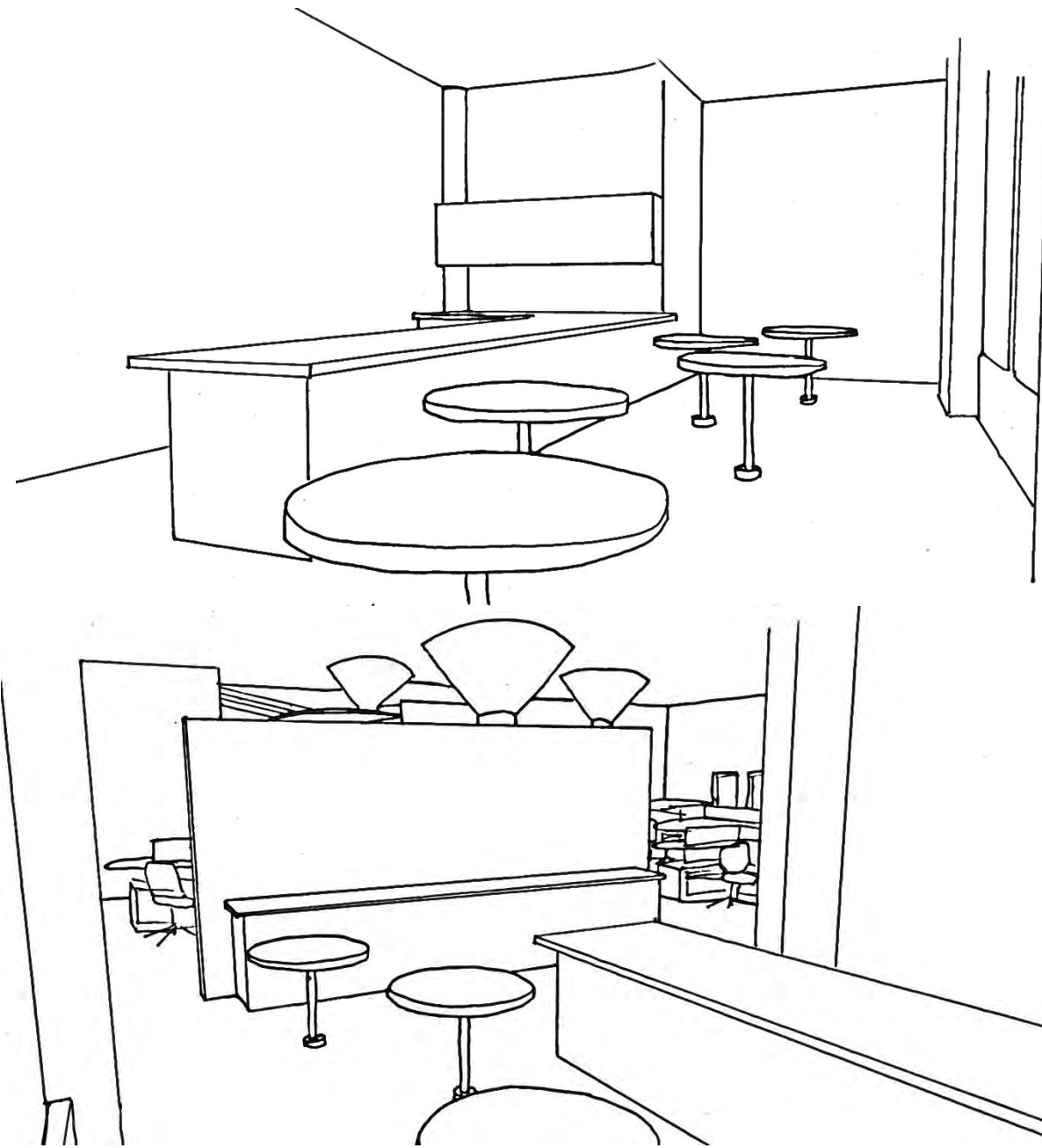
ENTRY SKETCHES



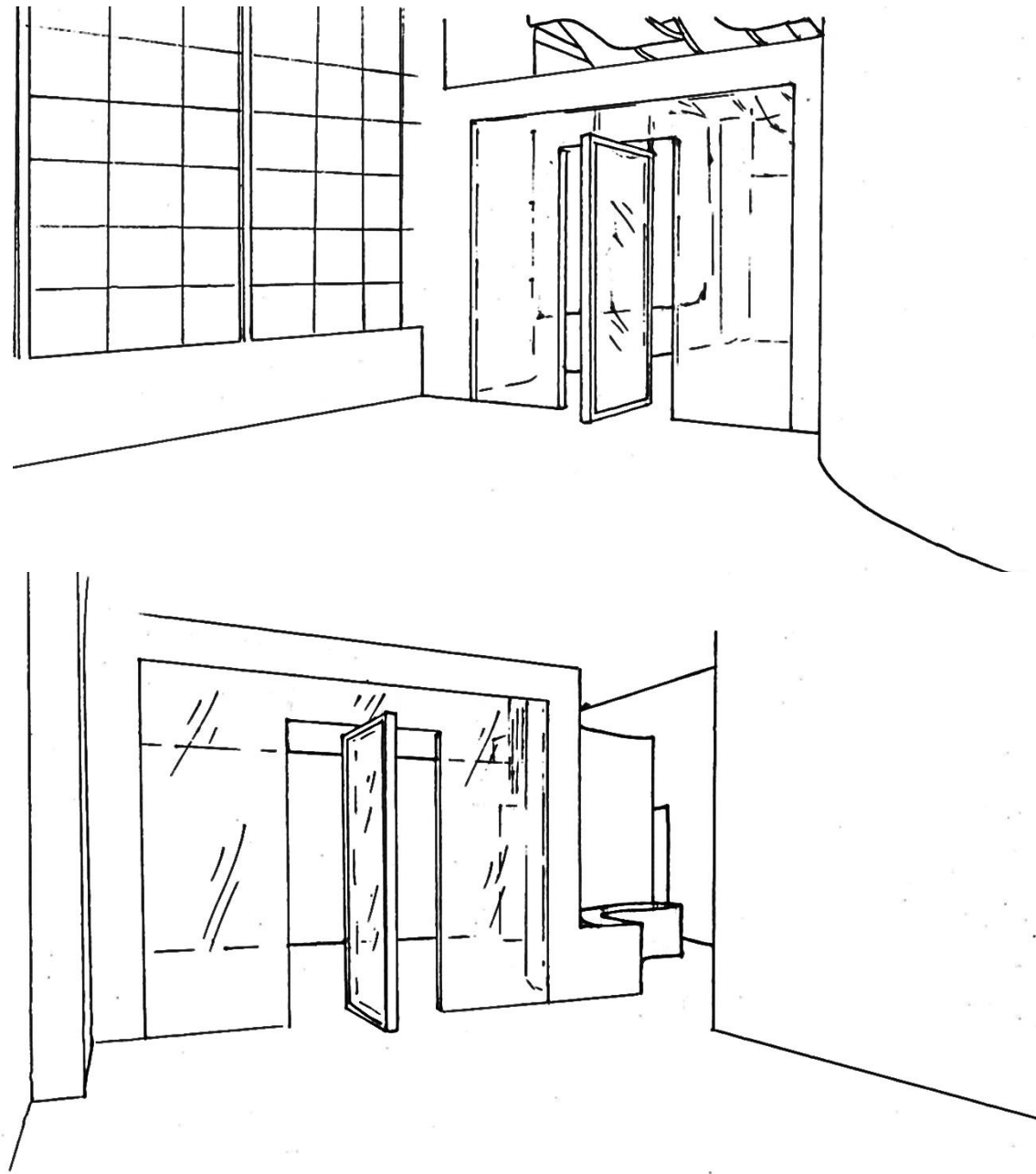
CORRIDOR SKETCHES



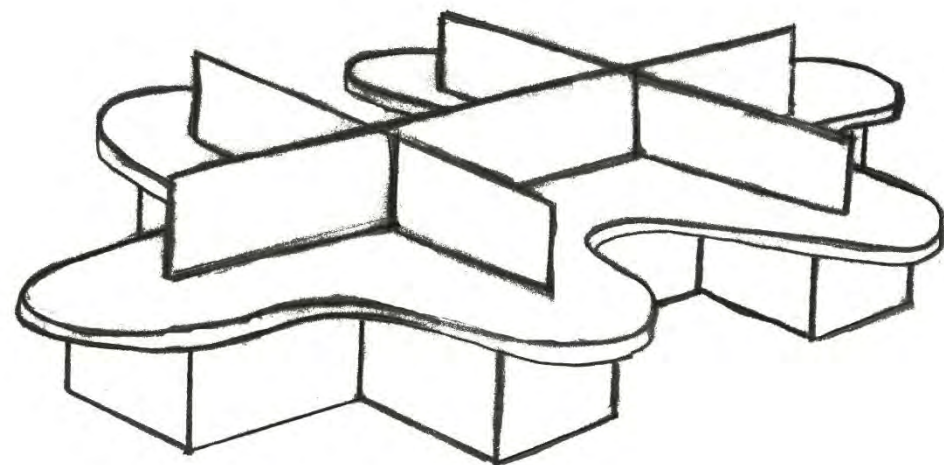
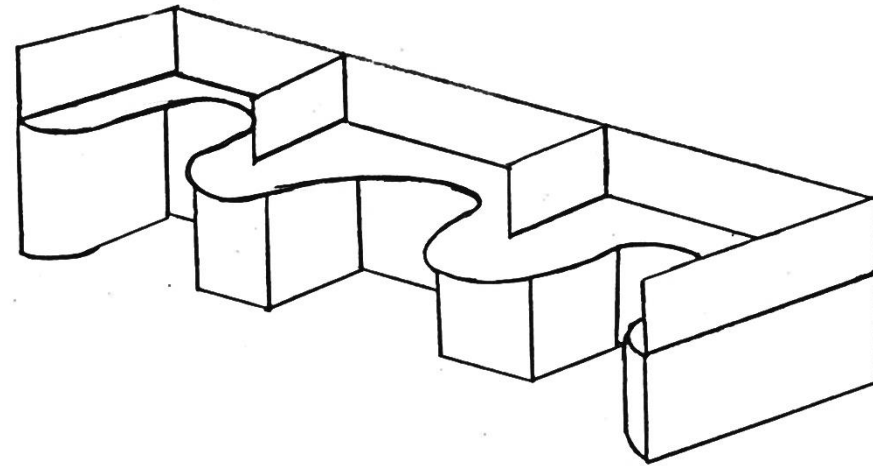
LOUNGE SKETCHES



CONFERENCE SKETCHES



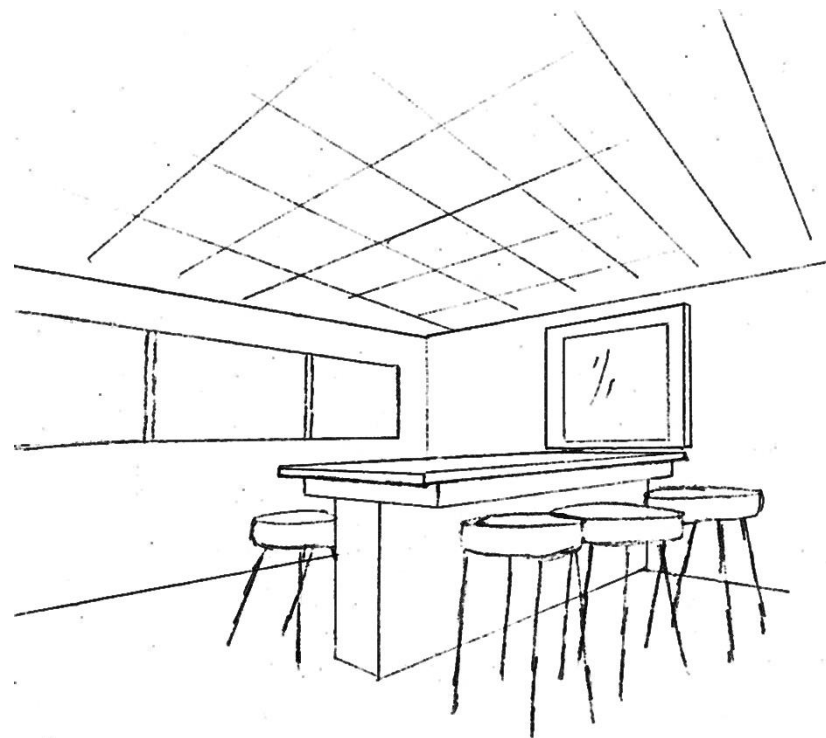
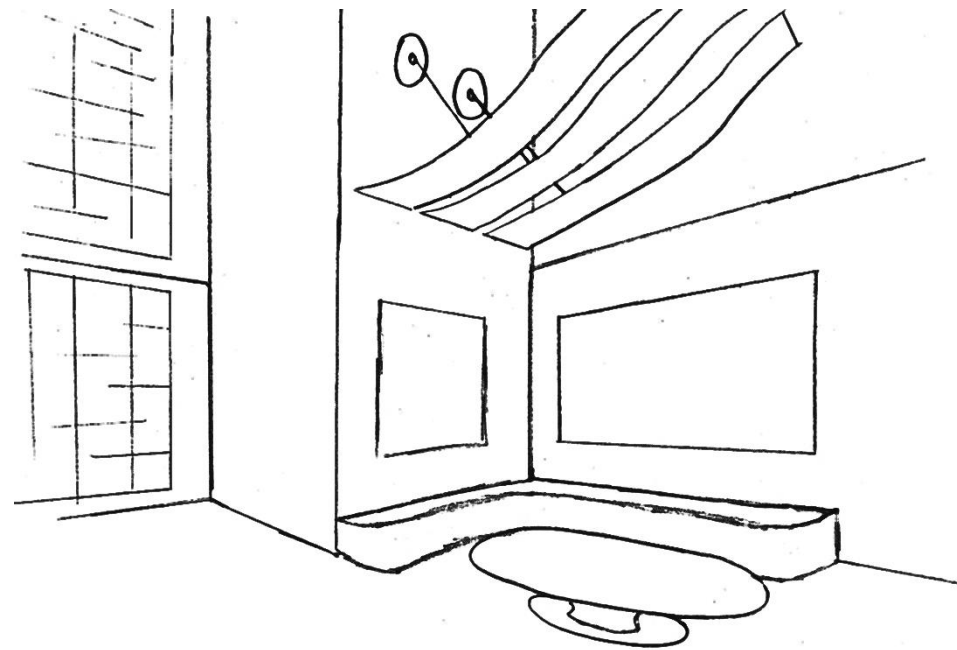
OPEN WORK AREA SKETCHES



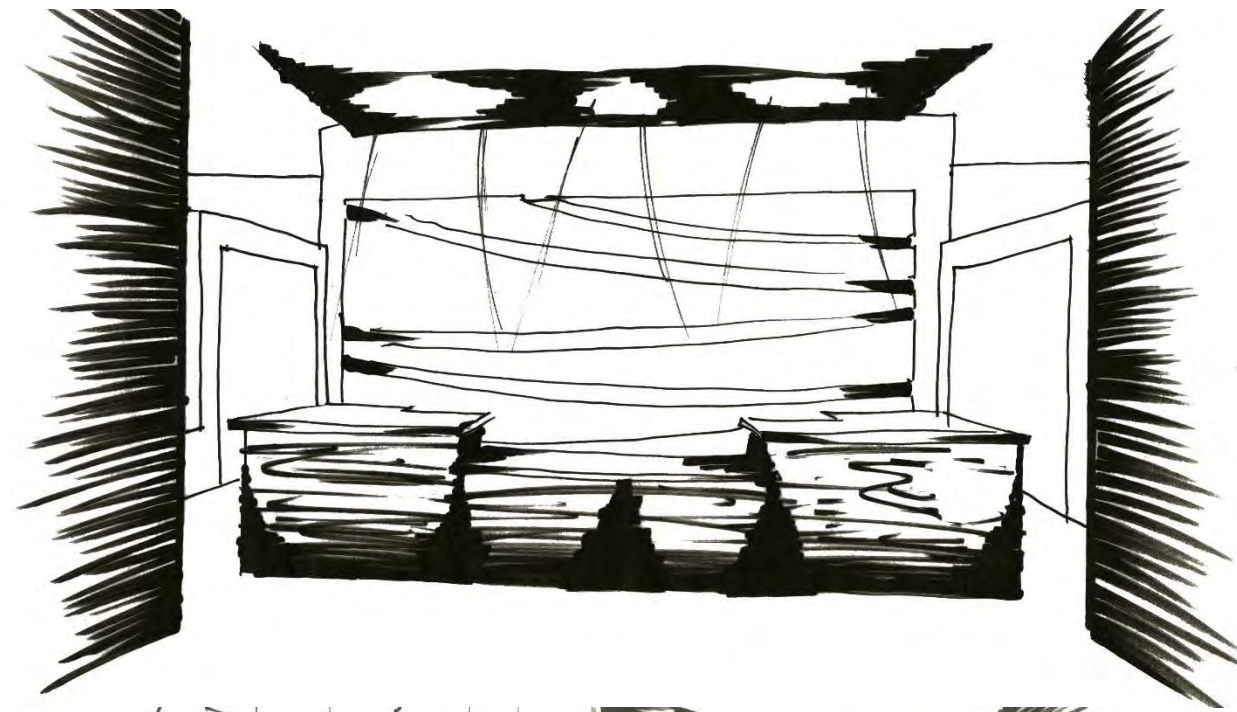
OPEN WORK AREA SKETCHES



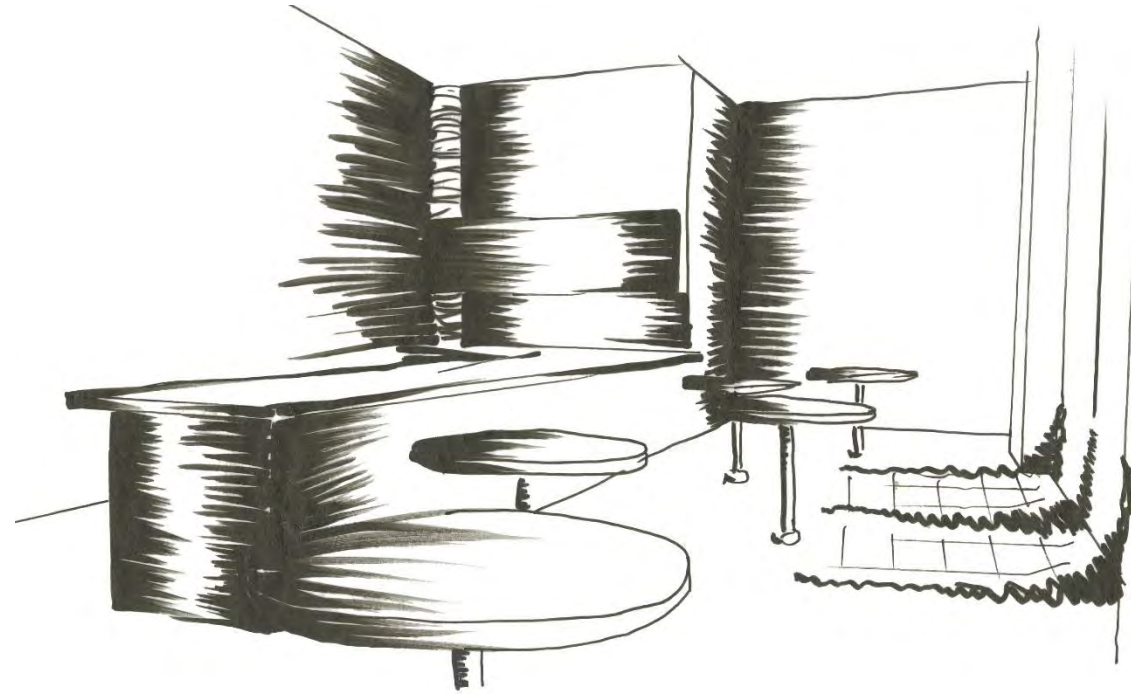
COLLABORATIVE SKETCHES



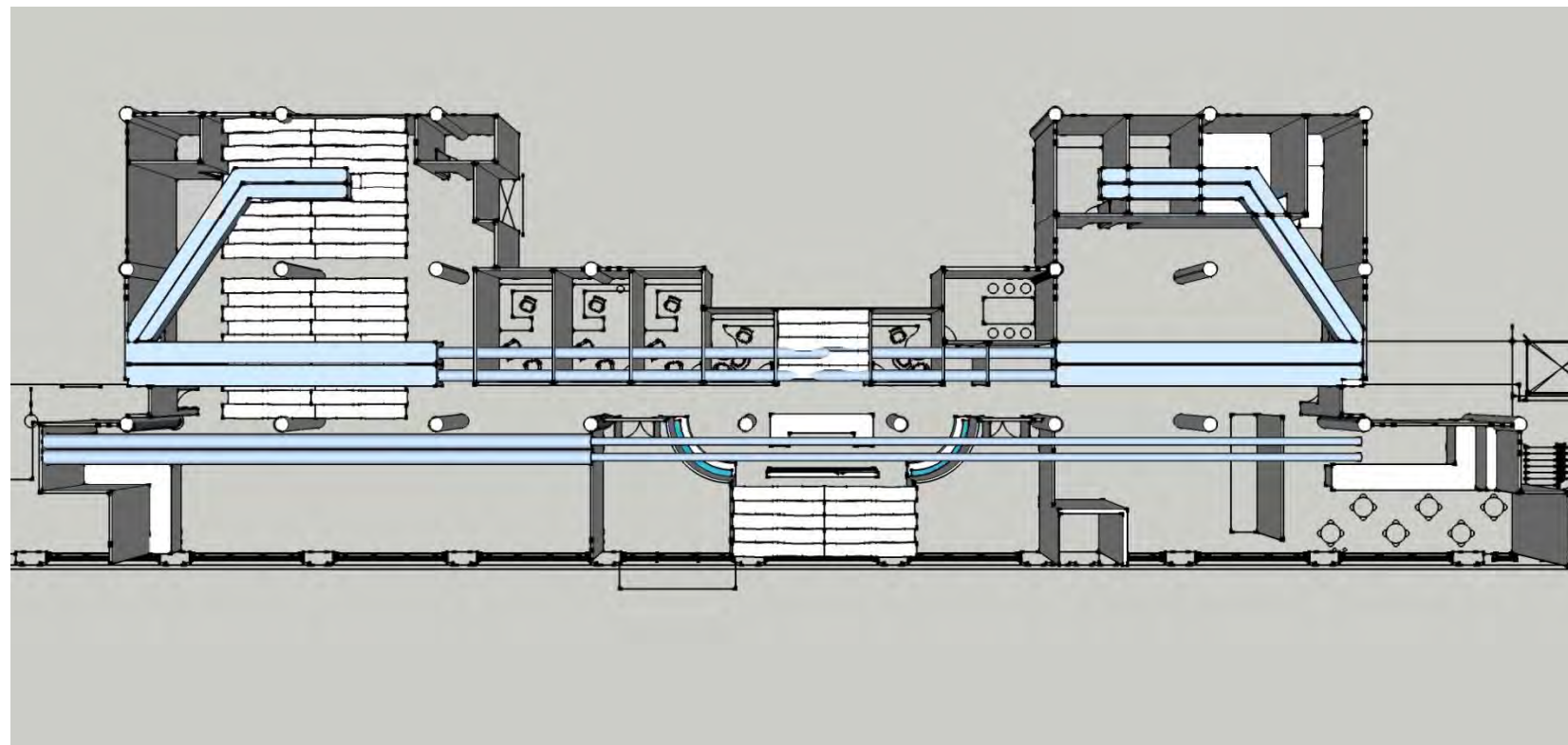
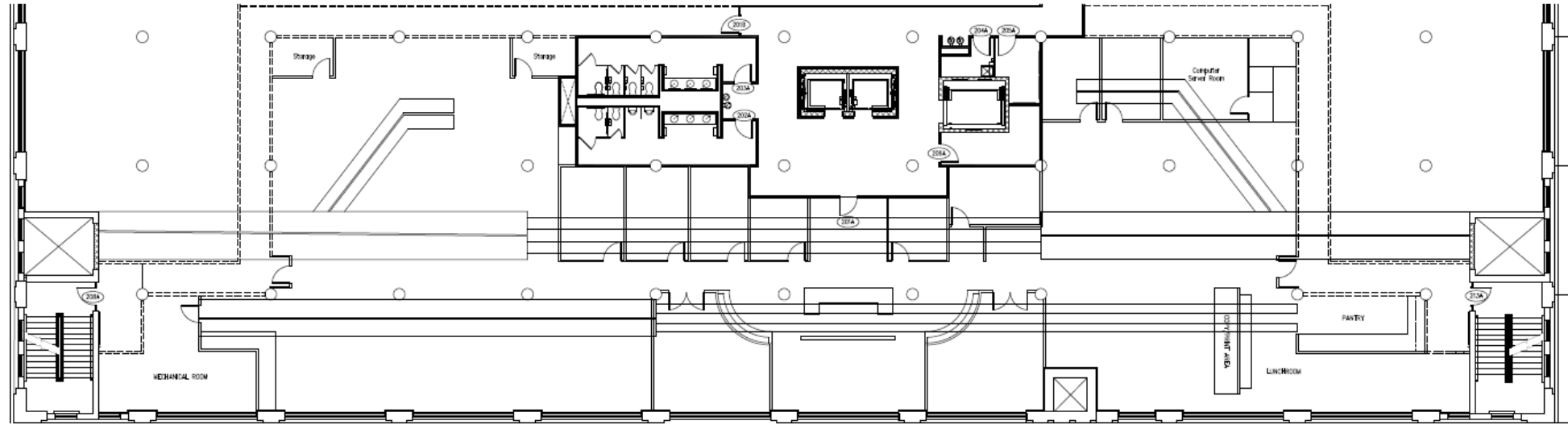
LIGHTNING SKETCHES



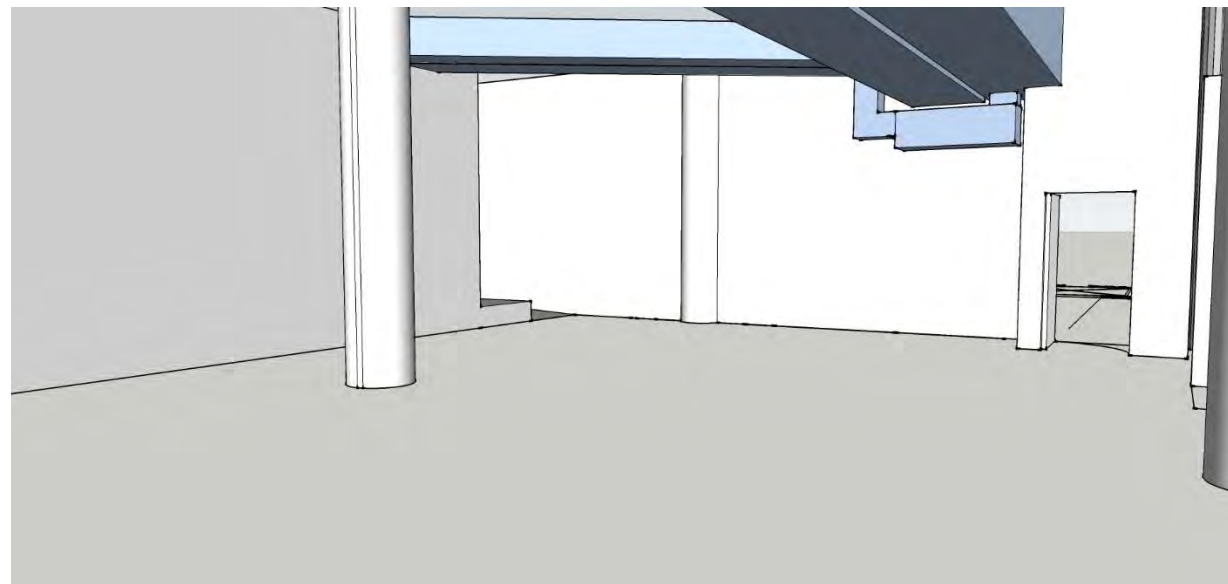
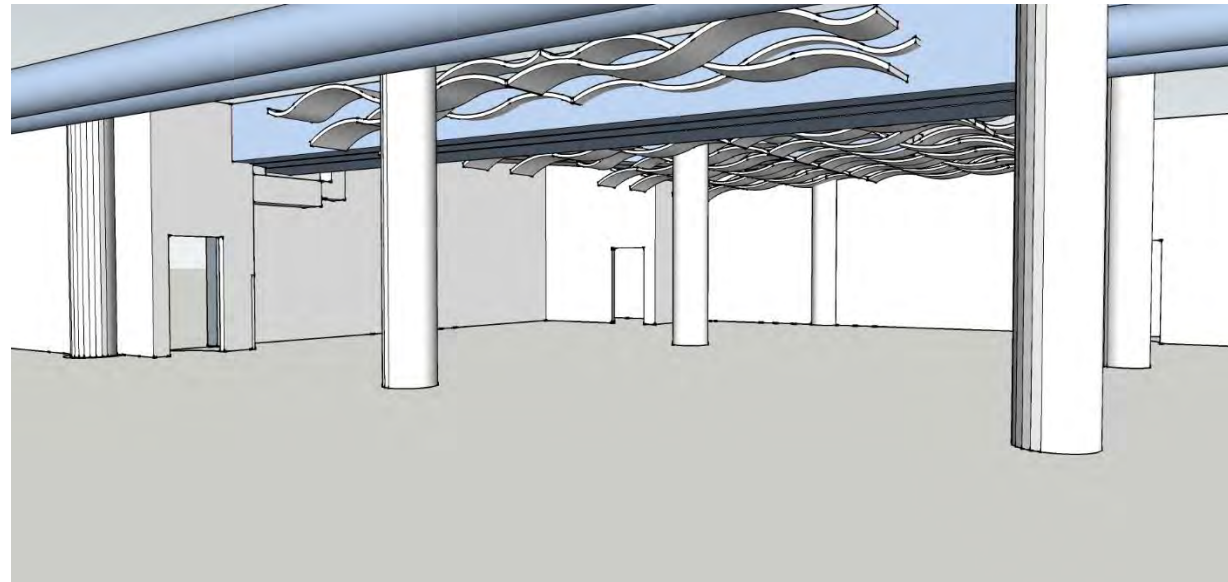
LIGHTING SKETCHES



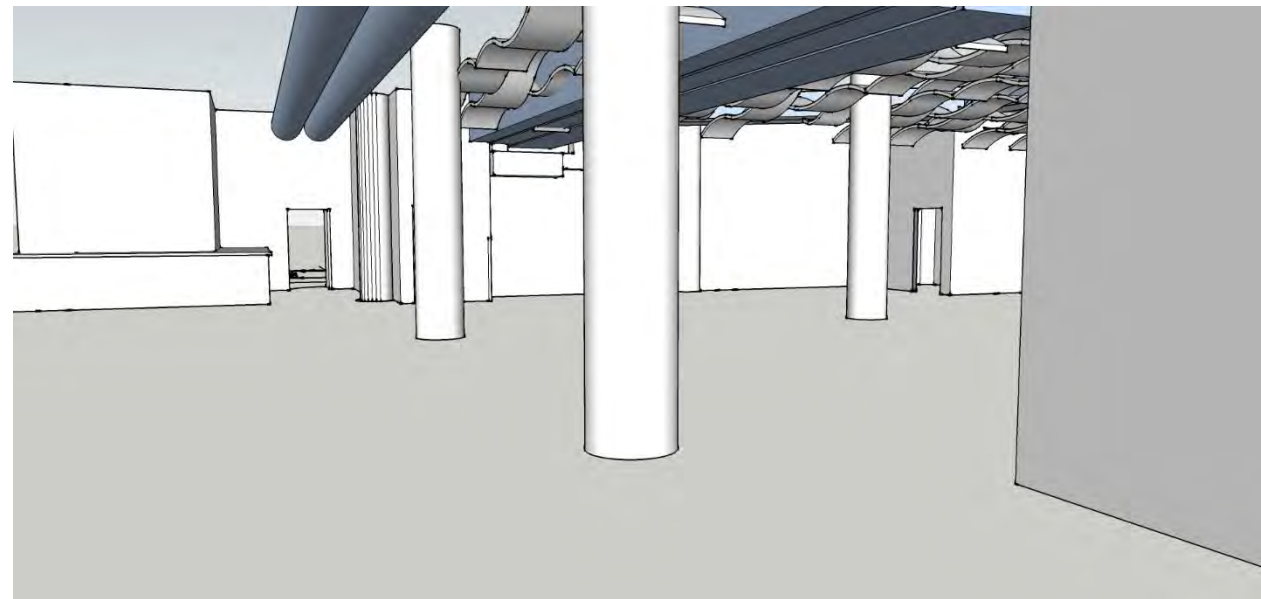
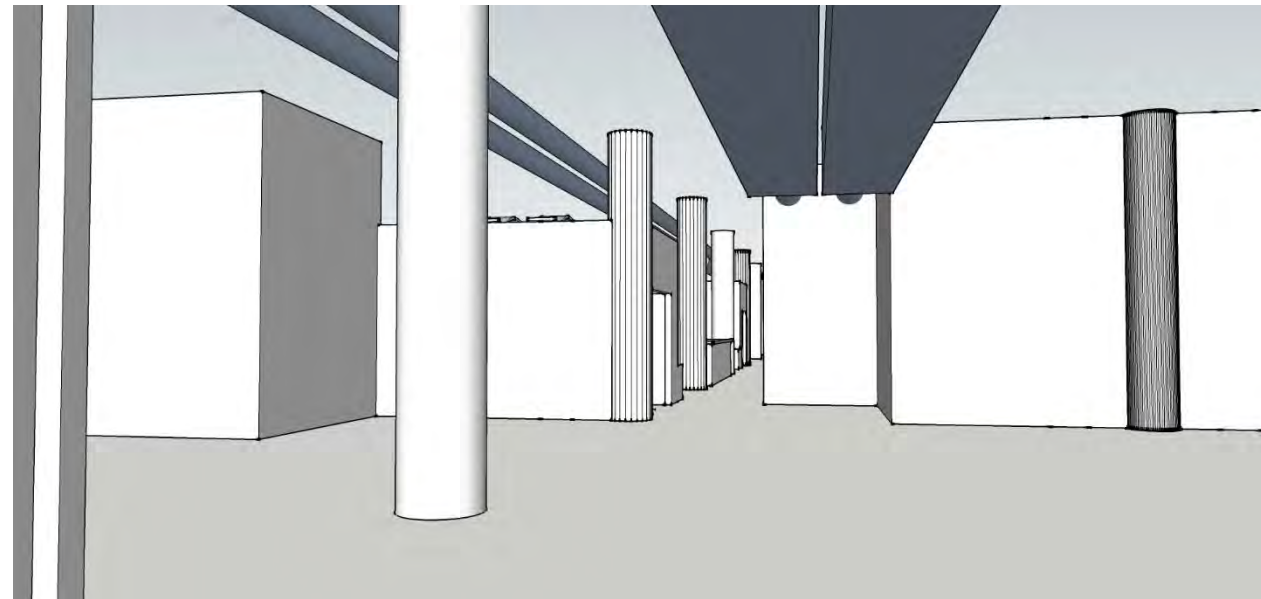
SYSTEMS RCP



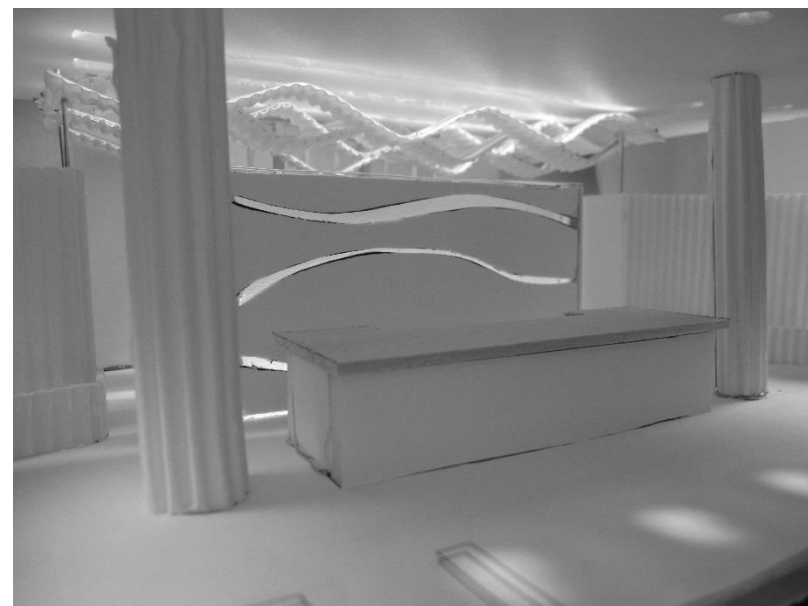
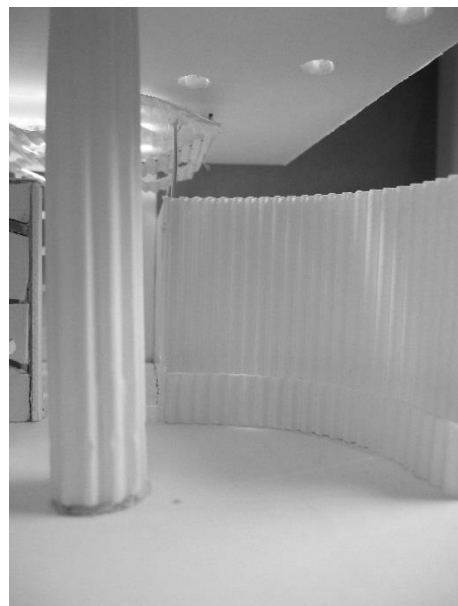
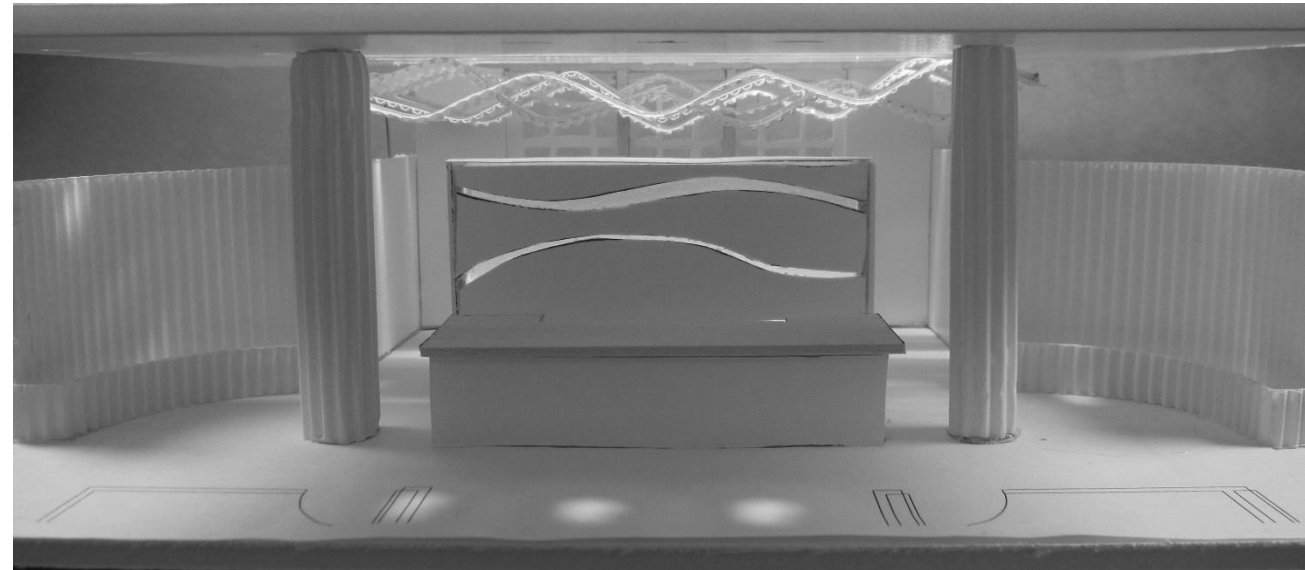
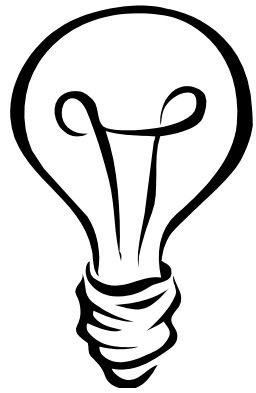
SYSTEMS RCP VIEWS



SYSTEMS RCP VIEWS



LIGHTING MODEL



SUSTAINABILITY STATEMENT

My plan for this design is to create an eco-friendly space, fit for the most capable of businesses, while creating as little negative and harmful impact on the earth as possible. Ideally, when designing our new space, we want to create as little impact on our surroundings and our environment as possible. Ensuring a safe, clean, and renewable environment takes center stage when it comes to my design. With cooperation from local and some external manufacturers, hopes are that all materials will be energy-rated and environmentally conscious as well as aesthetically pleasing to the eye. The overall goal of this space is not only to become the epitome of “good design” but to also become the ideal “green” space modeled for businesses to come.

- The substantial size of the windows will provide heat during the colder months, reducing the usage of heat. Screens and other window shades/treatments will be used in the warmer months to ensure coolness and shade.
- Lighting sensors will be added to enclosed office spaces as well as storage rooms to ensure that little energy is wasted when spaces are not occupied.
- All materials used in construction and renovation will be simplistic in the hopes that they can be found in around the surrounding area, resulting in low embodied energy for the total structure.
- Materials such as sheetrock, carpeting, flooring, etc. will use adhesives and other adhesive properties with little toxic fumes to ensure a clean and safe work environment.
- Clean air filtering systems will be installed for fresh, clean air.

