

BETHANY DOWER

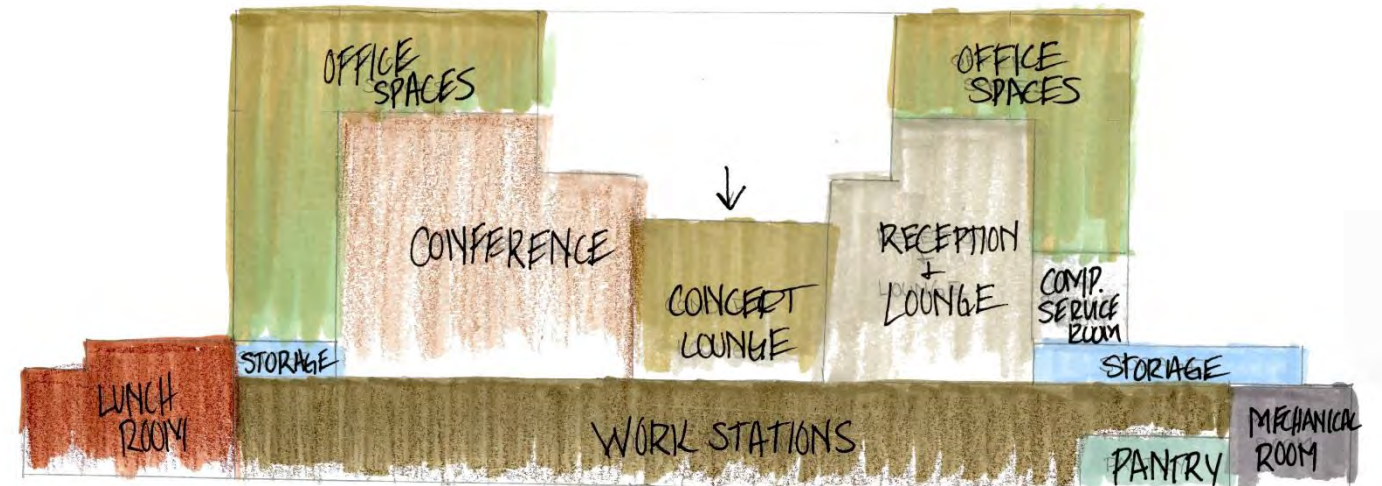
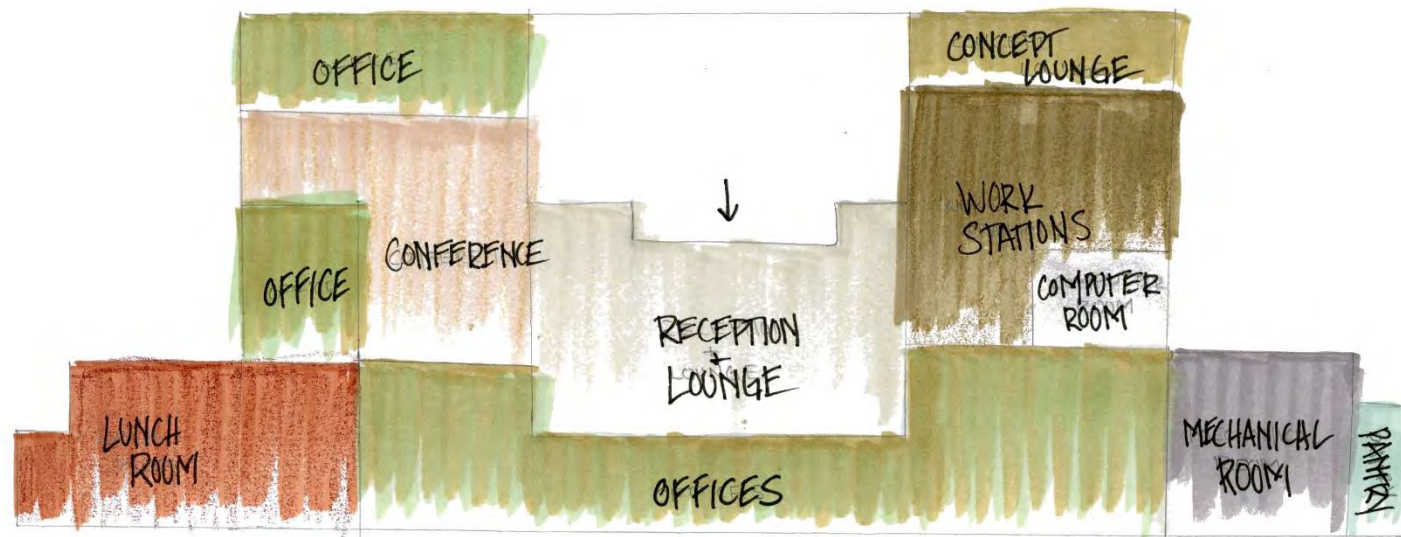
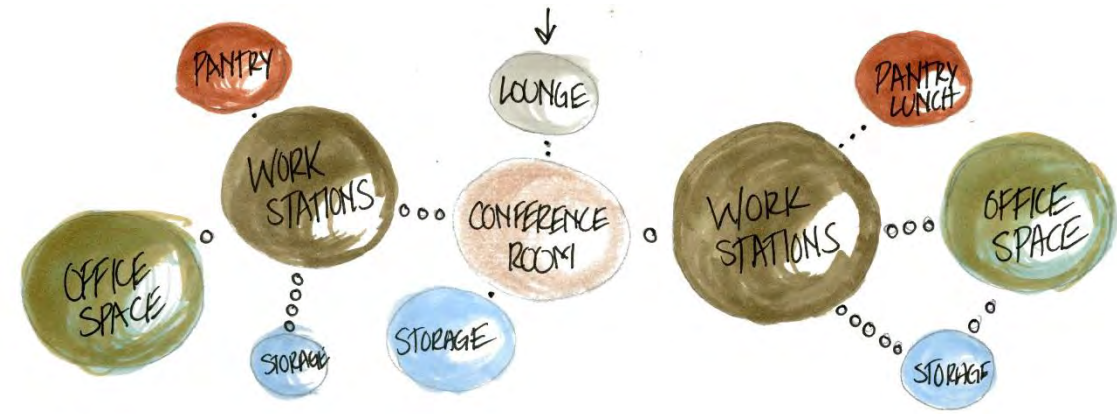
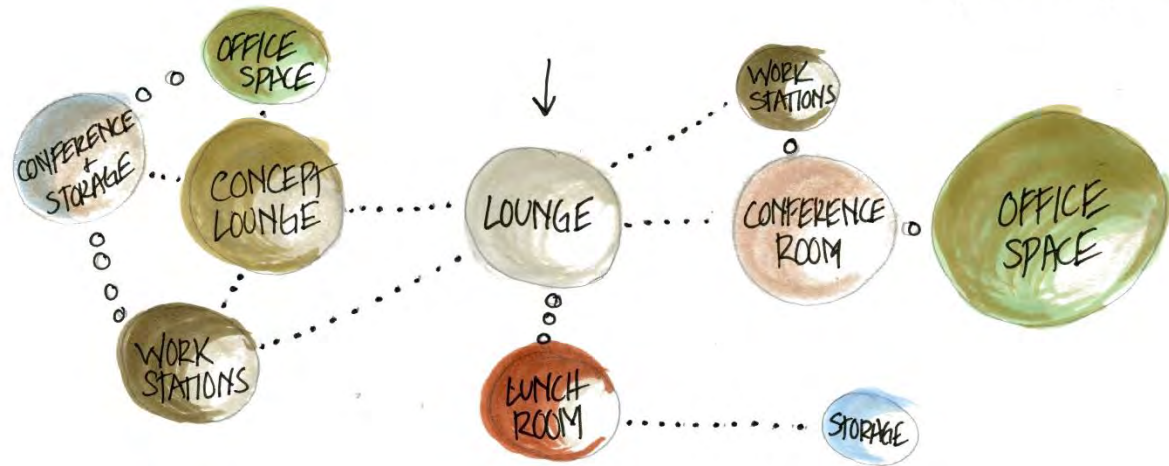
IDSN 3600

PORTFOLIO 2: PRELIMINARY SCHEMATIC DESIGN

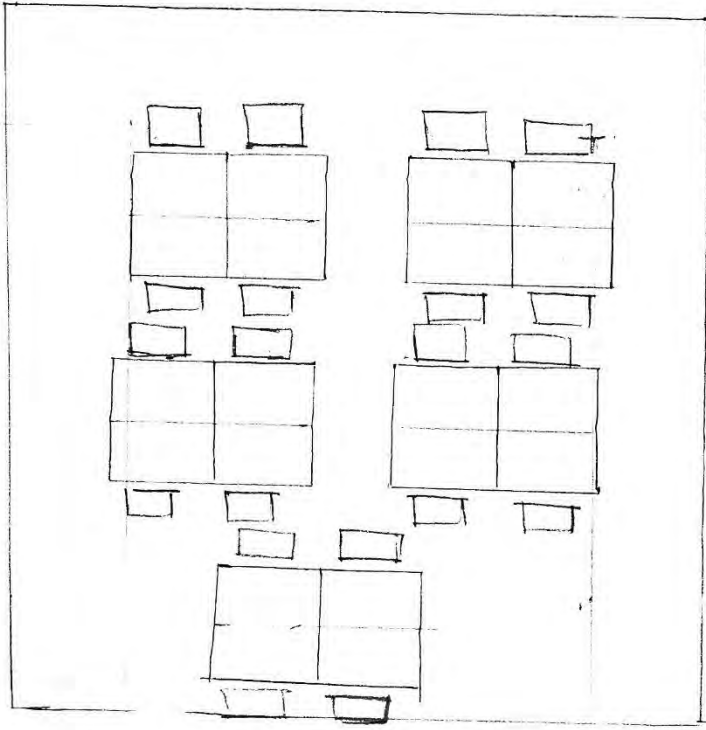
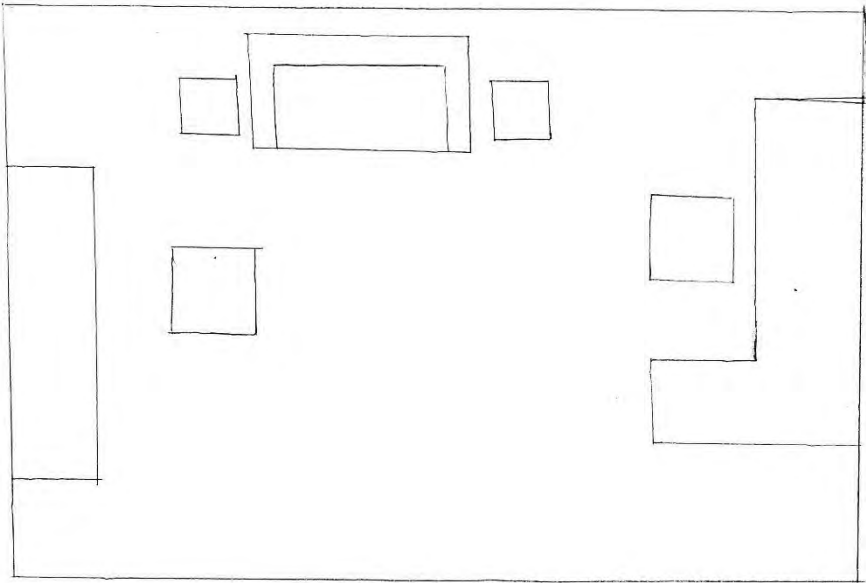
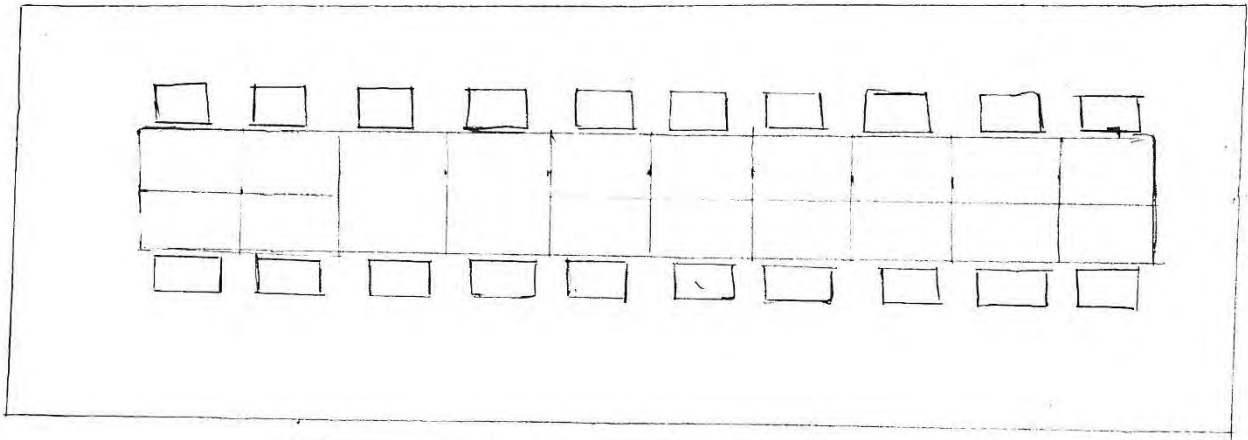
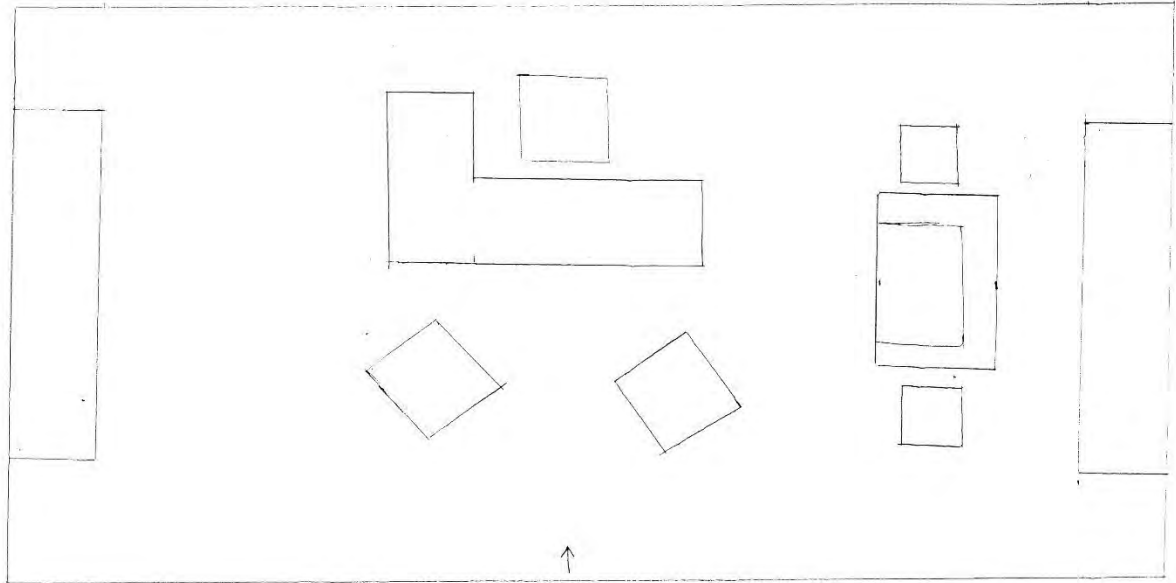
FALL SEMESTER

ASSIGNMENT 4: BUBBLE DIAGRAMS, BLOCKING DIAGRAMS

○ MAJOR ADJACENCY
 • MINOR ADJACENCY

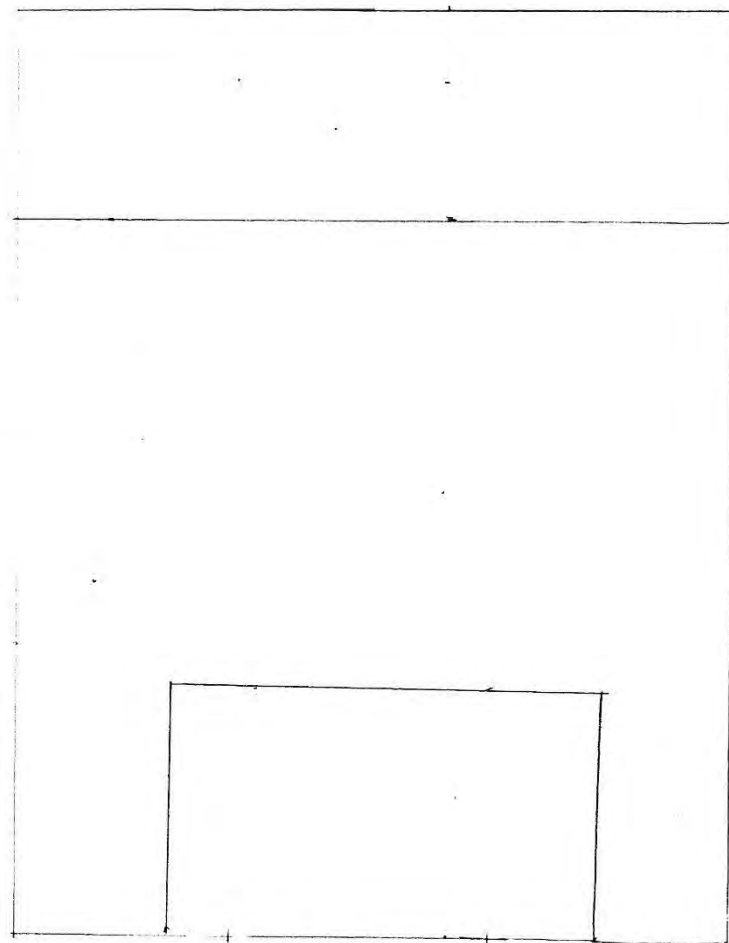
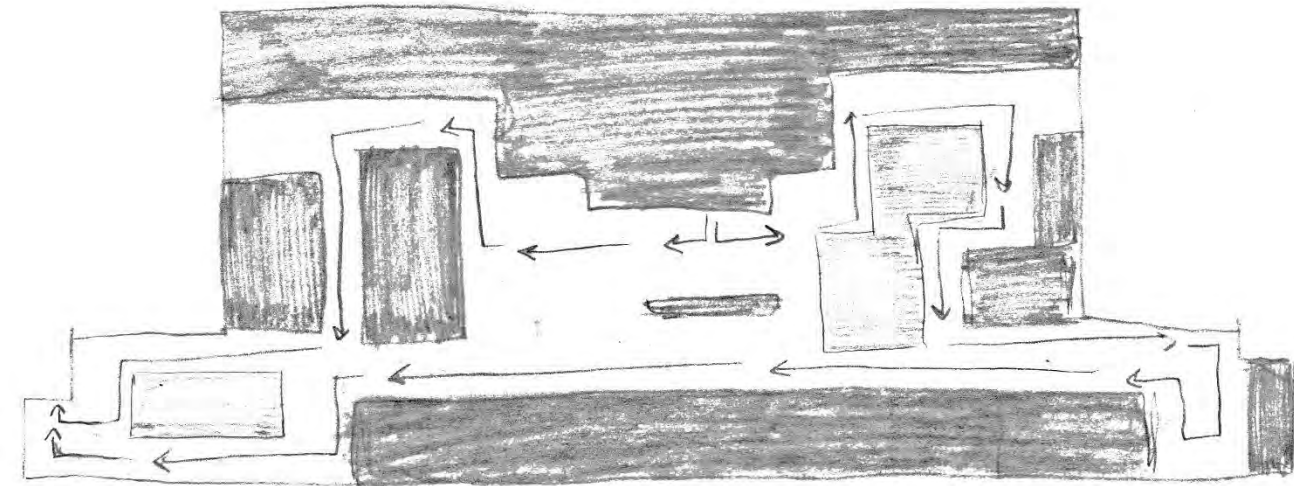
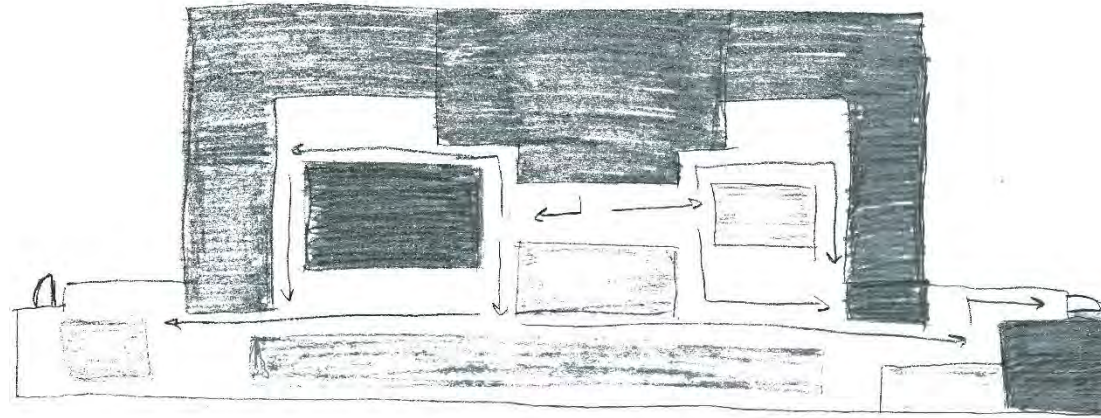


SPACE STANDARD DRAWINGS: OFFICE AND WORK STATIONS

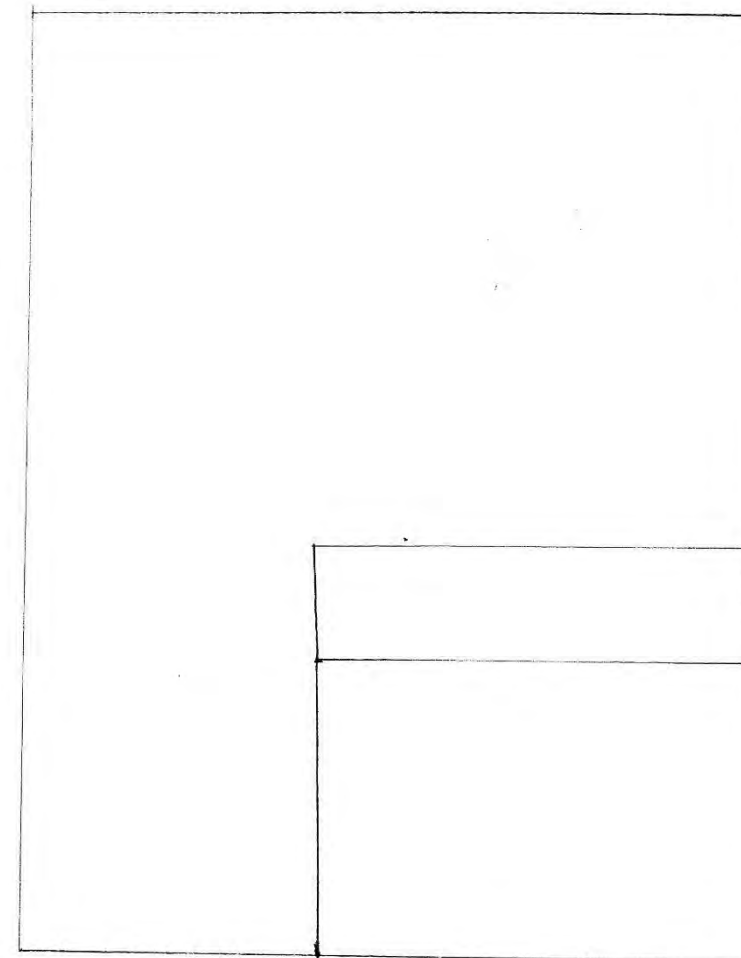


WORK STATION DESIGN 2
17.3x17.3
20 PEOPLE

ASSIGNMENT 5: SPATIAL CONCEPT SKETCHES, SECTION SCETCHES

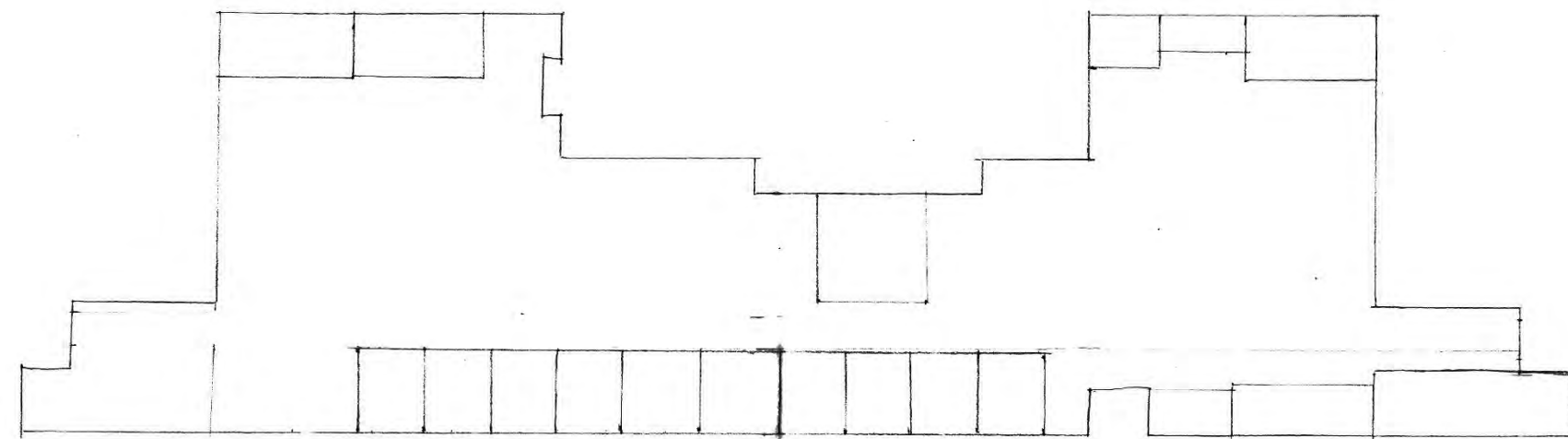
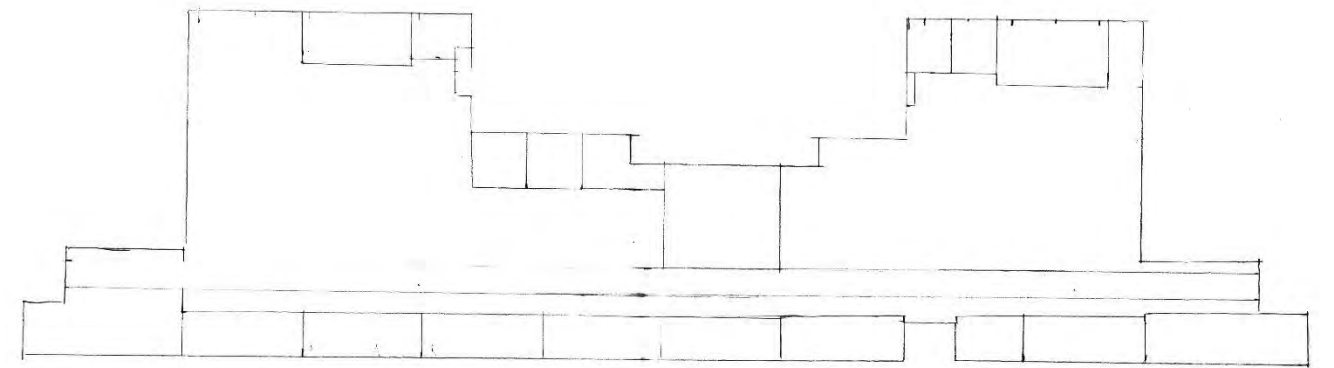
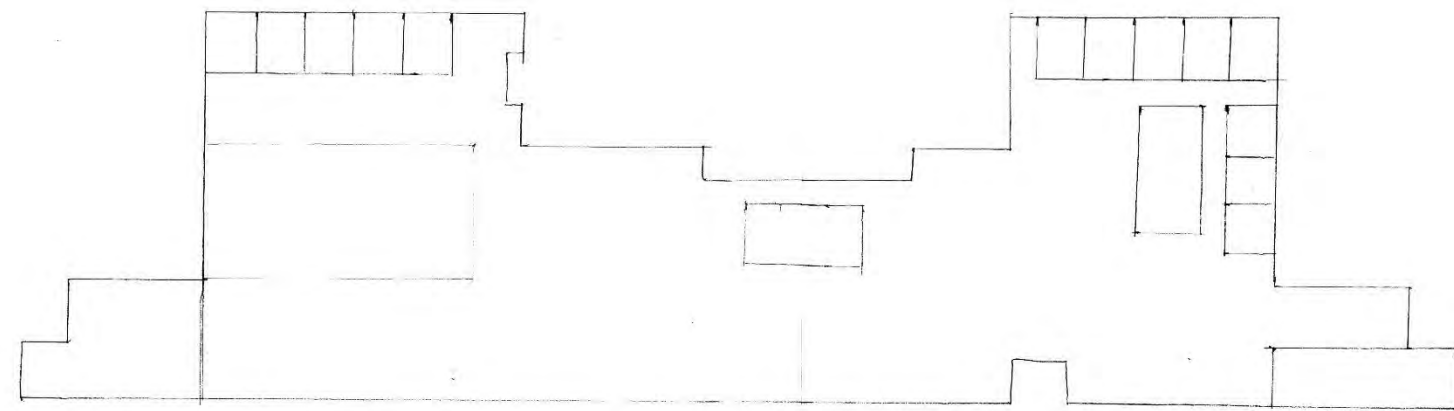
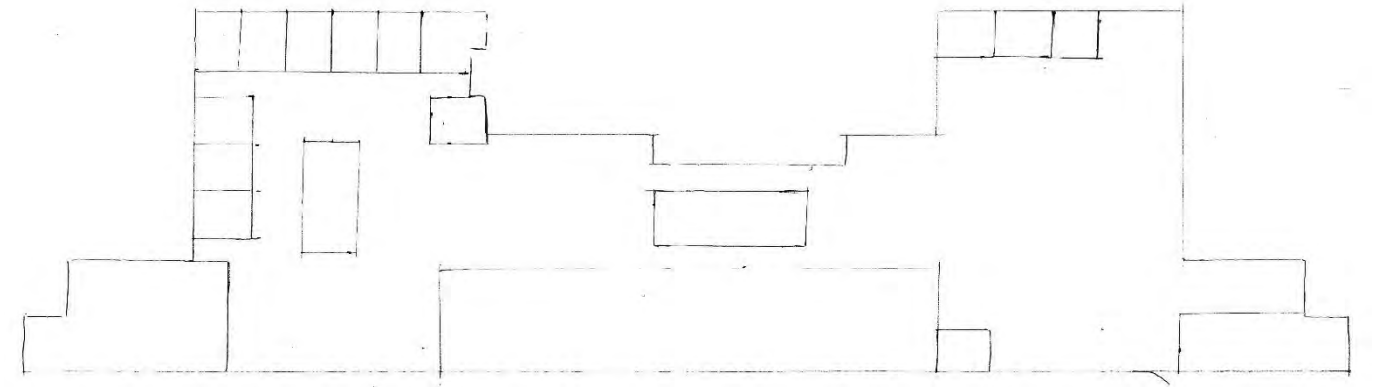
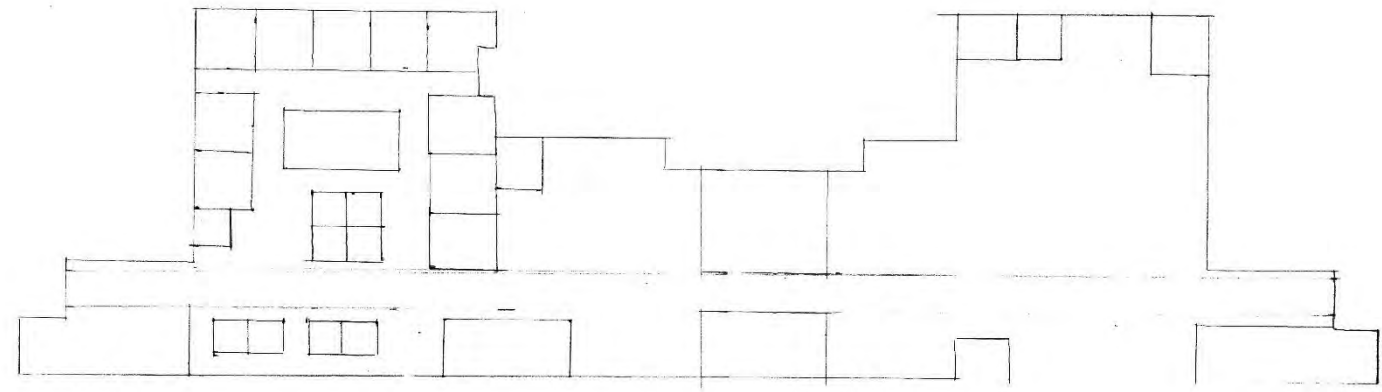


RECEPTION 10' HIGH

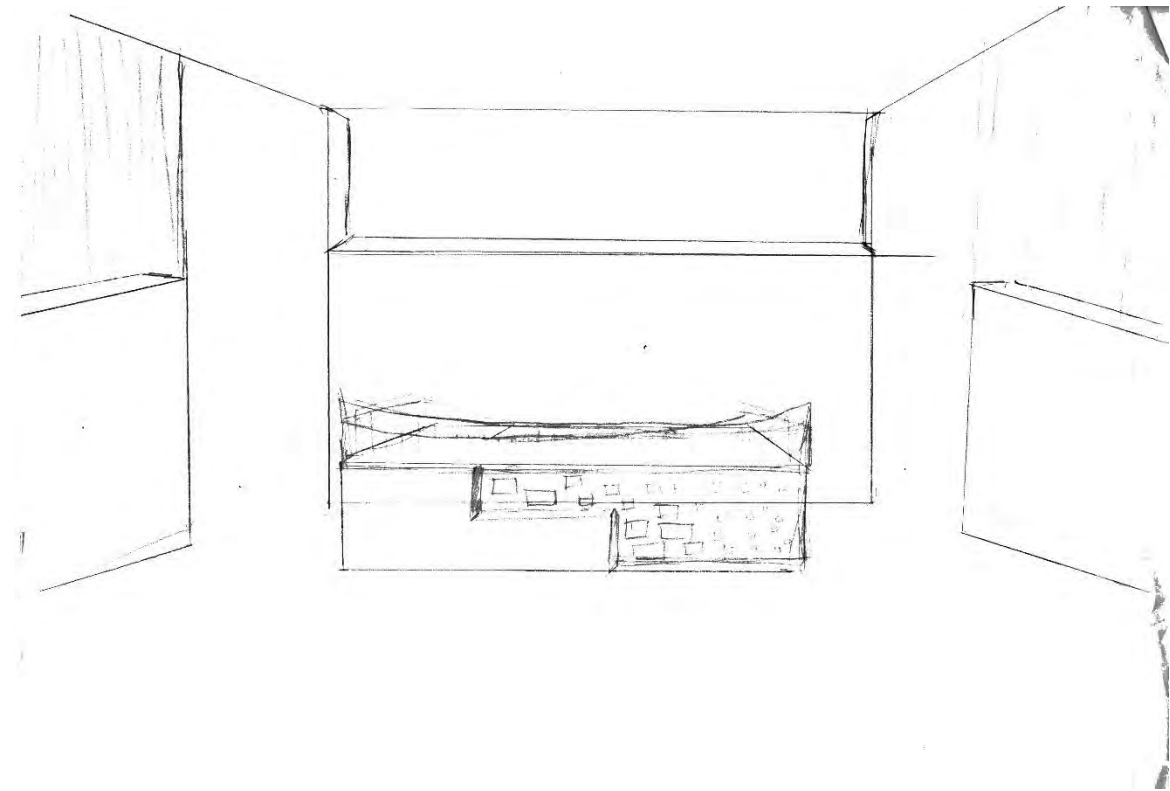
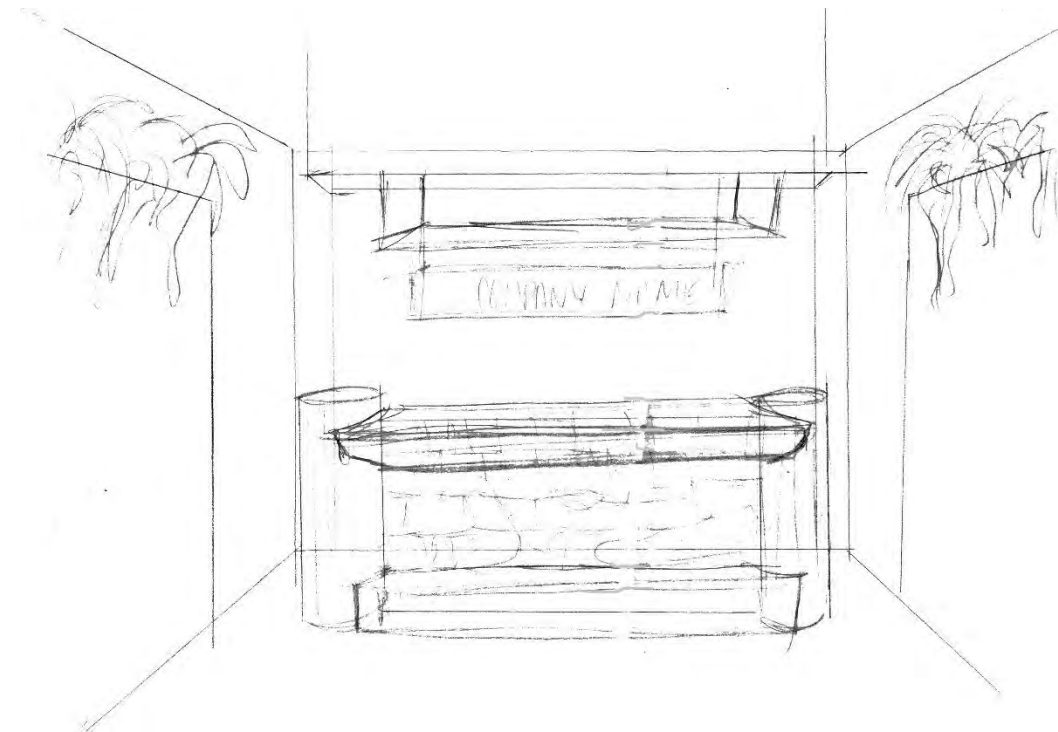
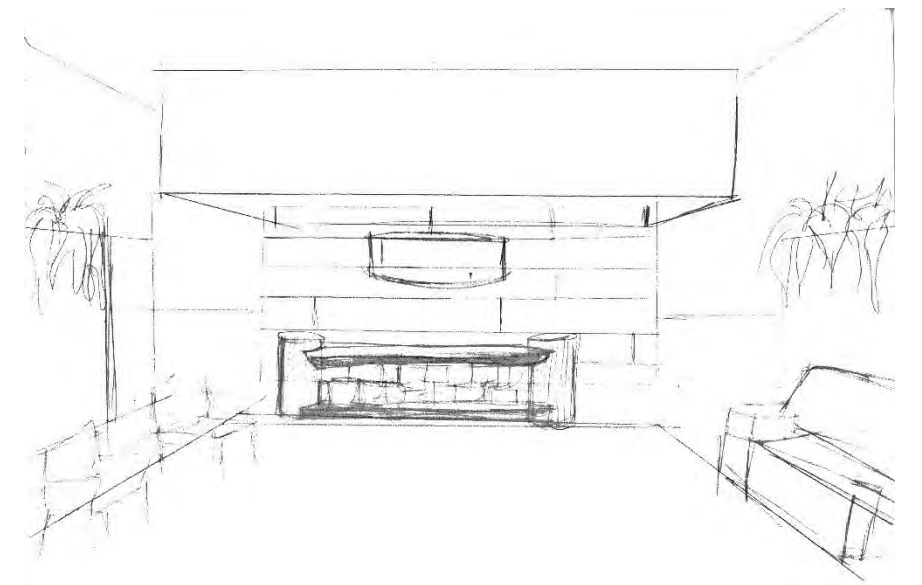
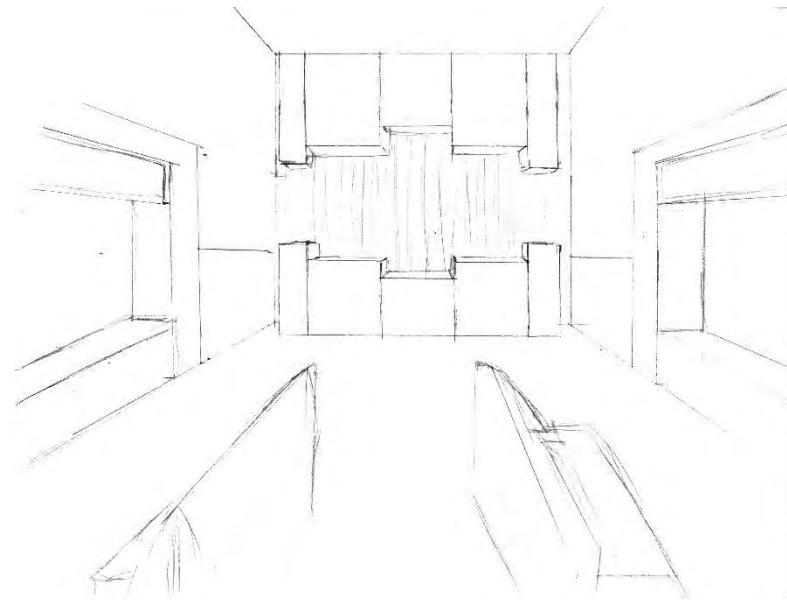
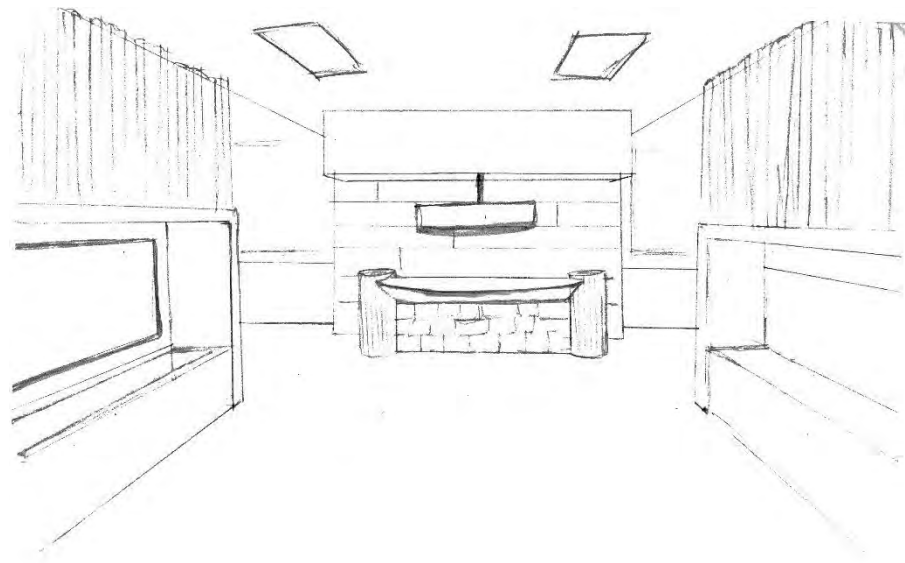


WORK STATION HALLS 13' HIGH

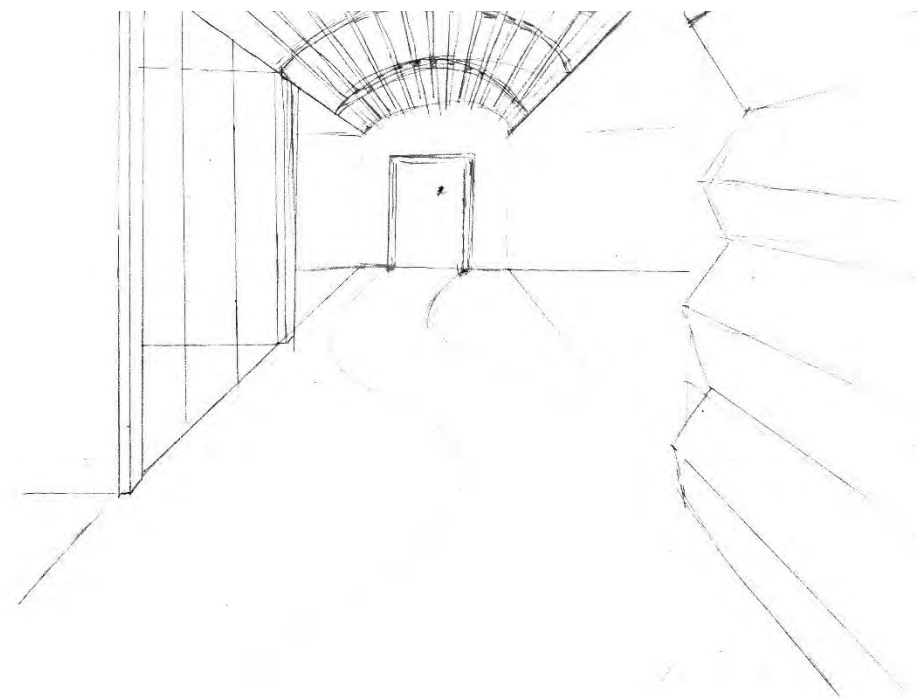
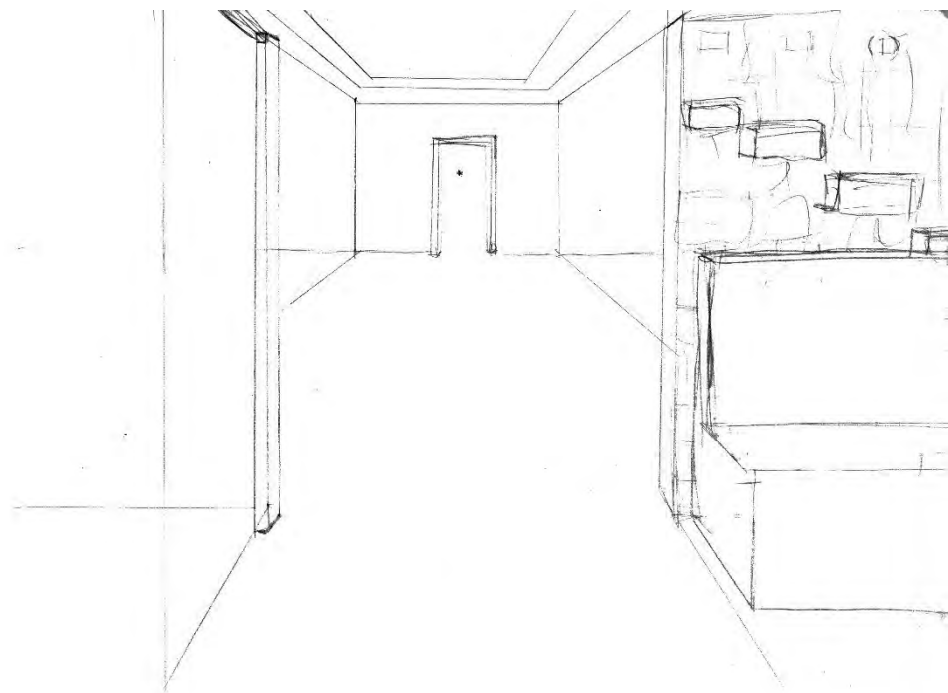
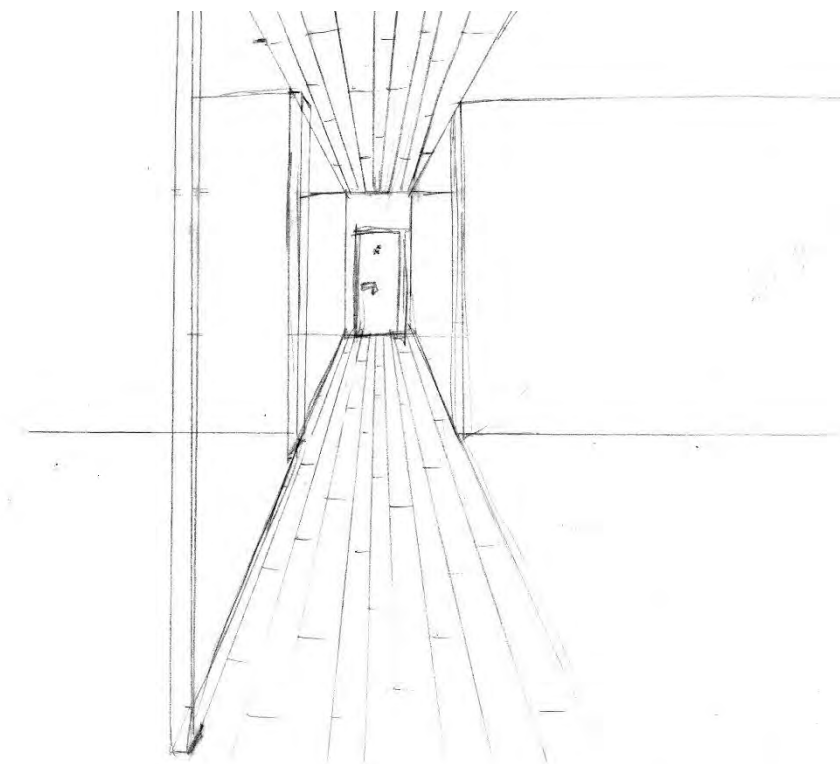
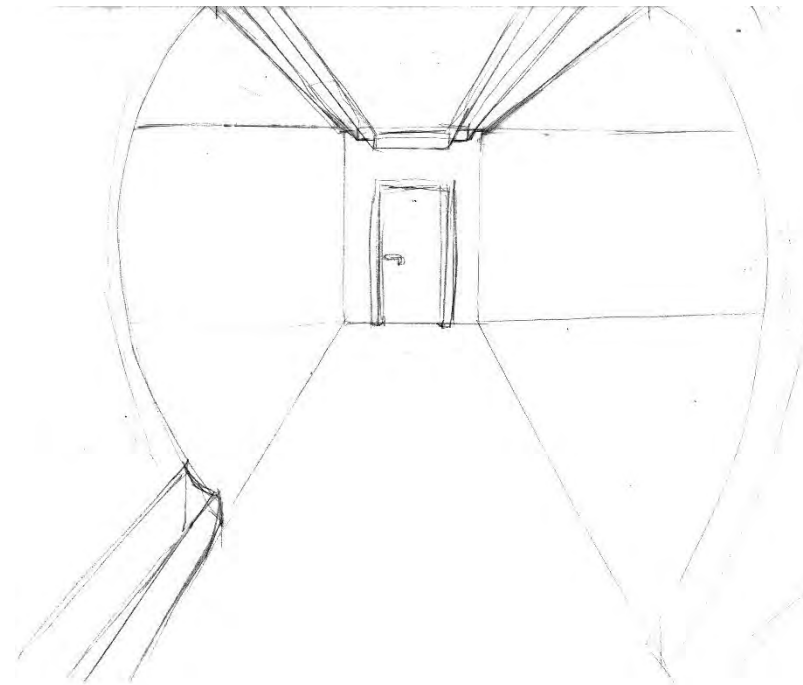
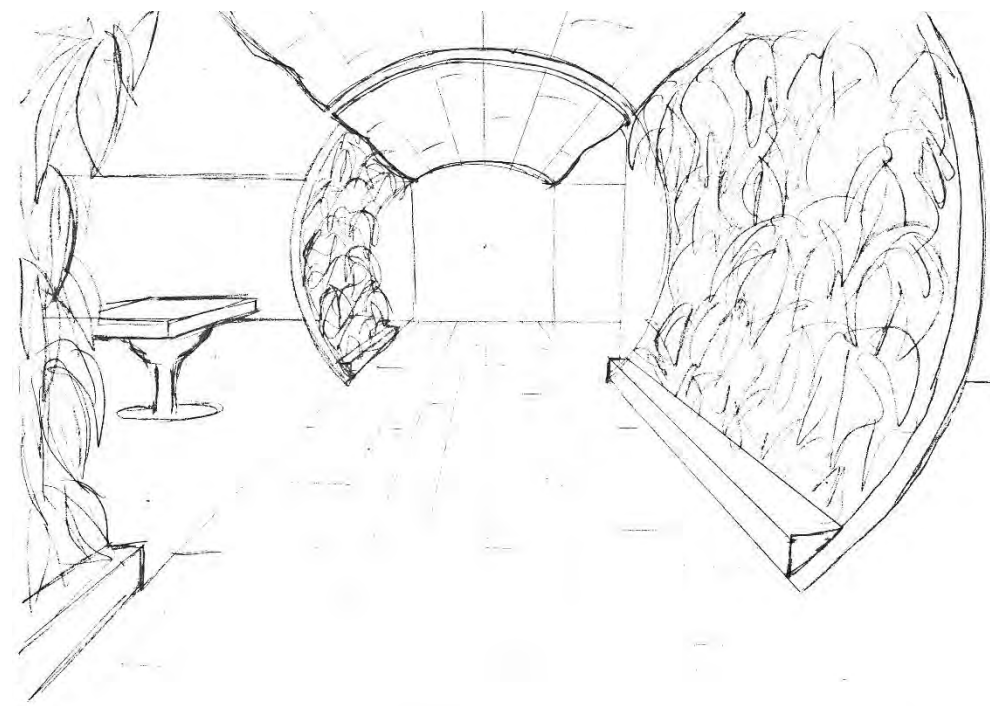
ASSIGNMENT 6: SPACE PLAN SKETCHES



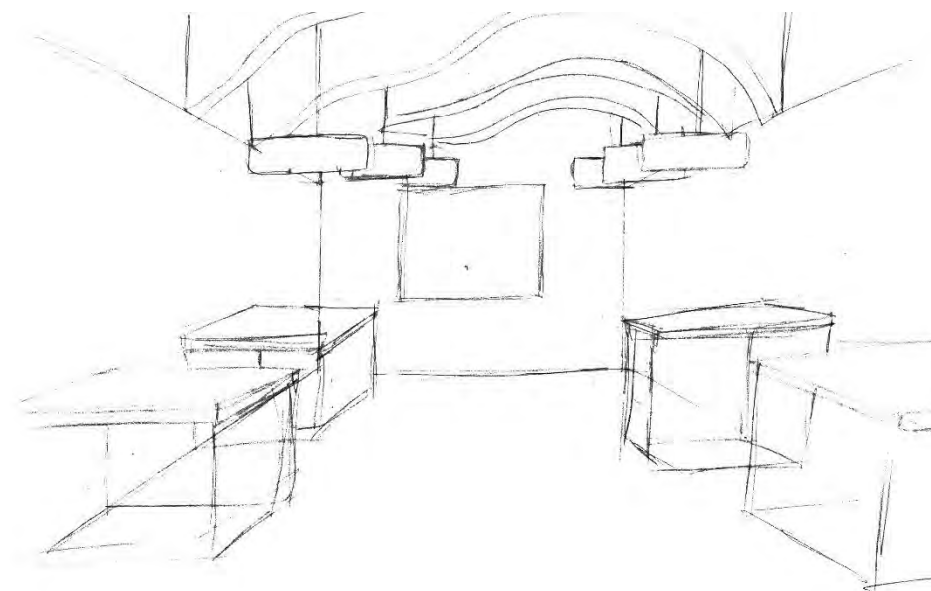
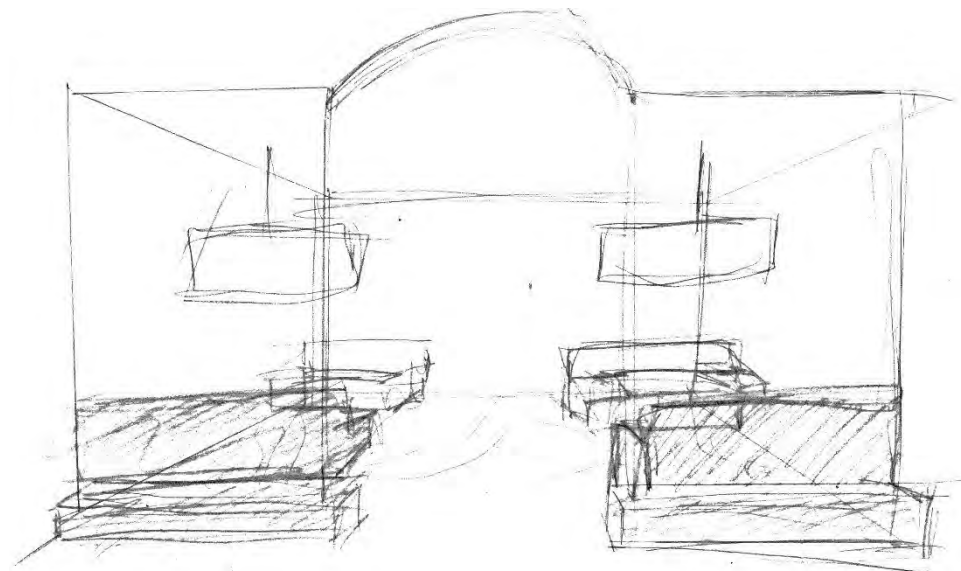
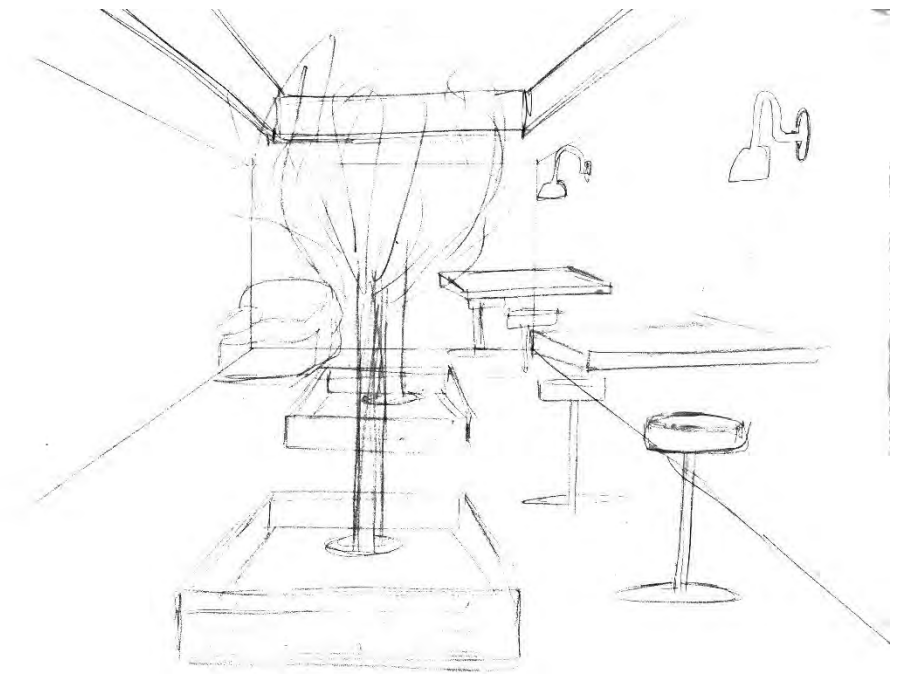
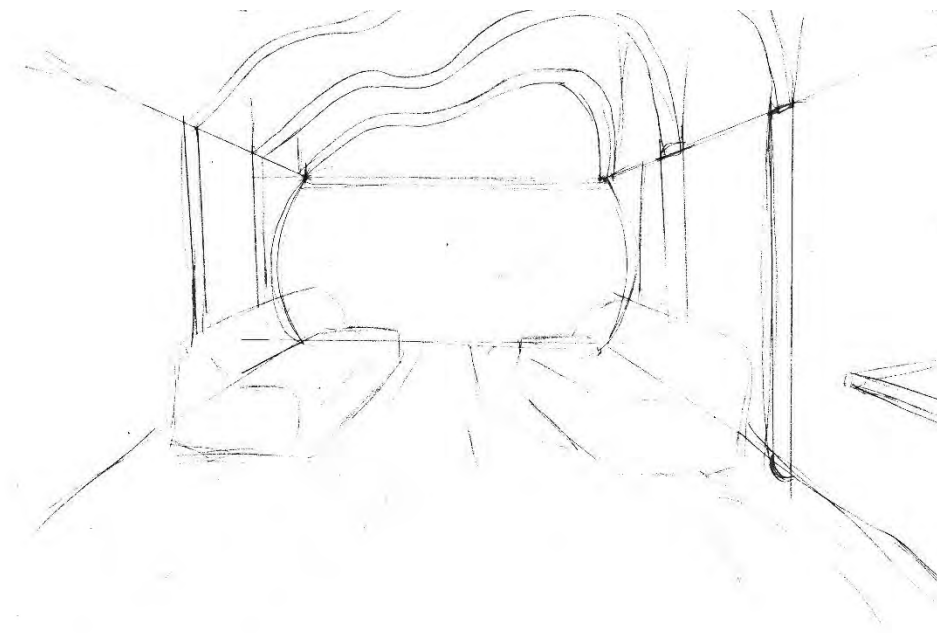
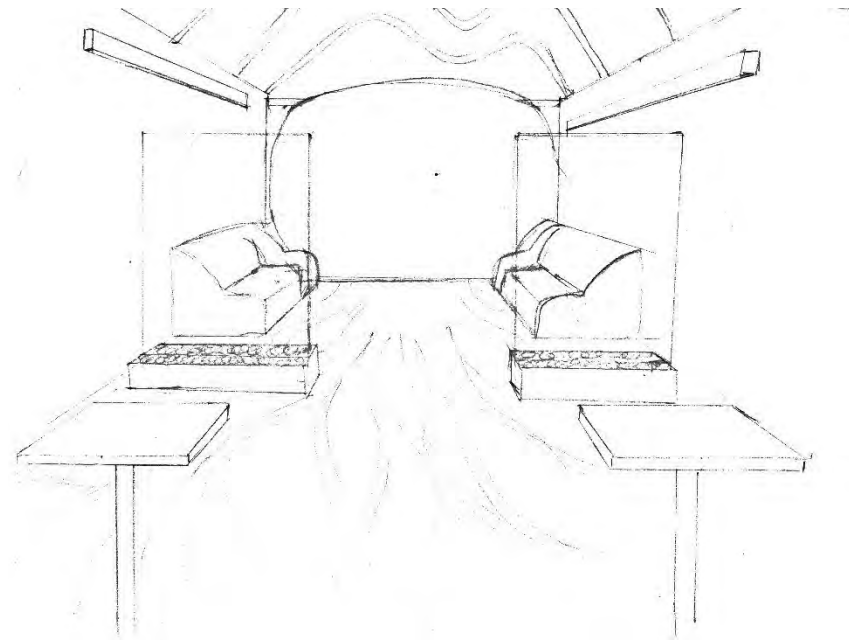
ASSIGNMENT 7: ENTRY SKETCHES



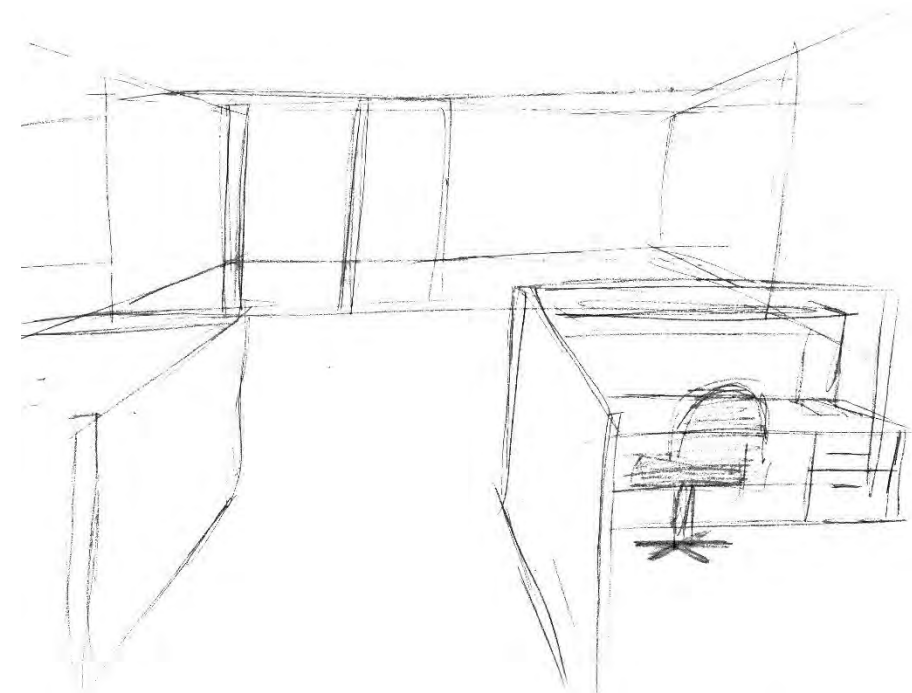
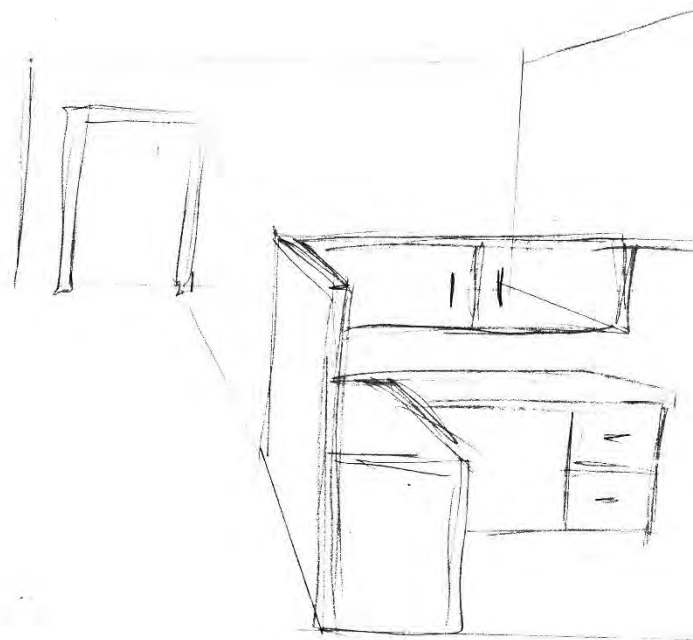
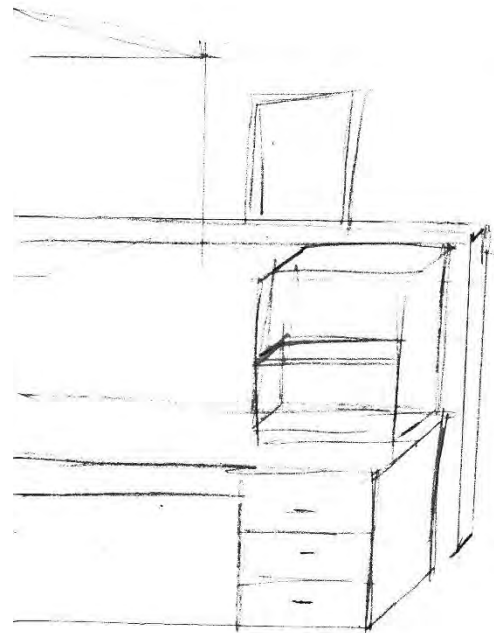
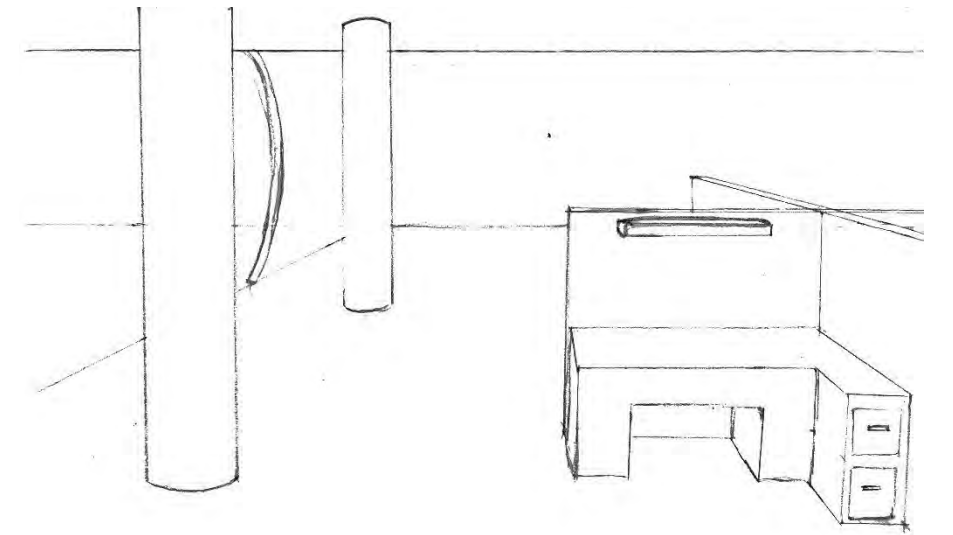
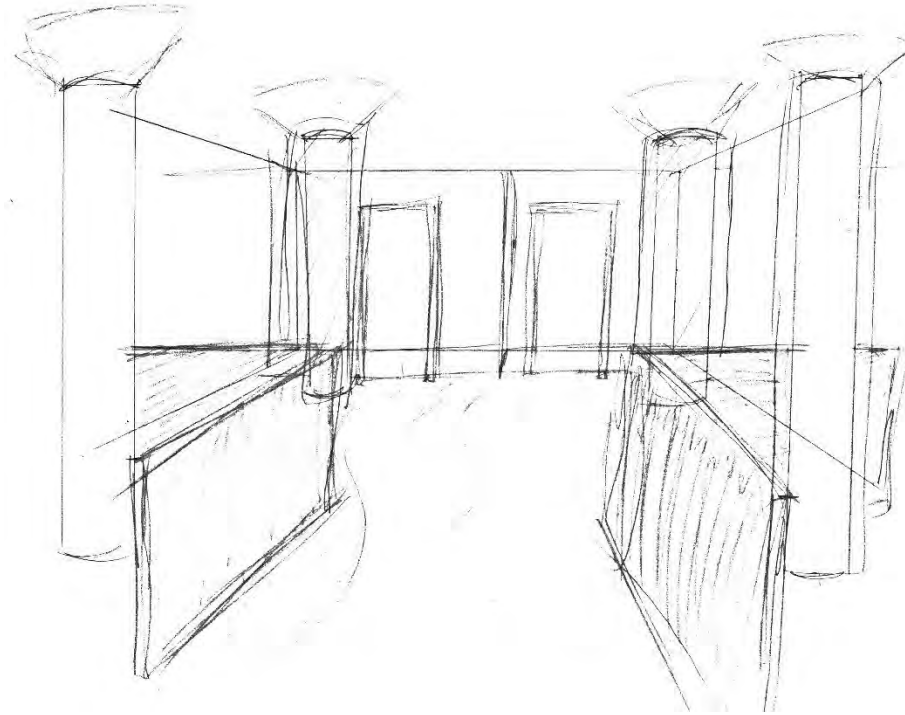
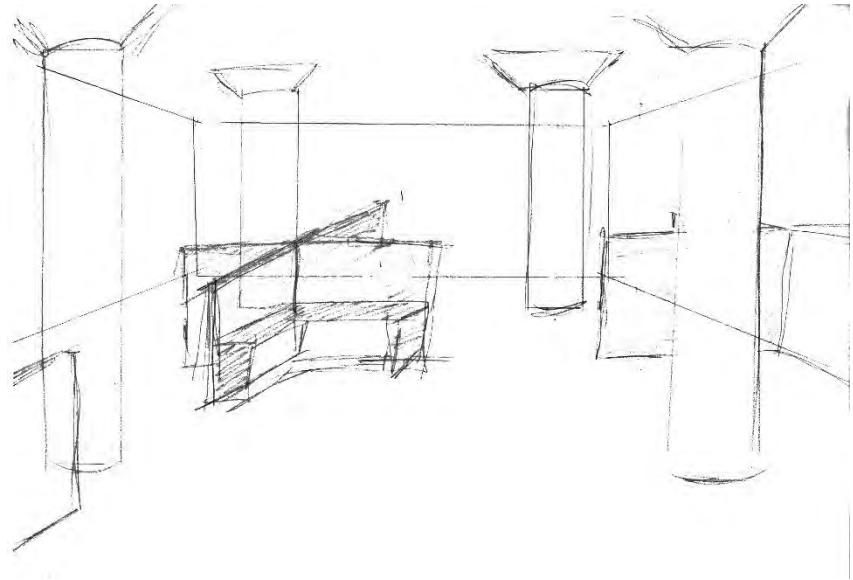
MAIN COORIDOR SKETCHES



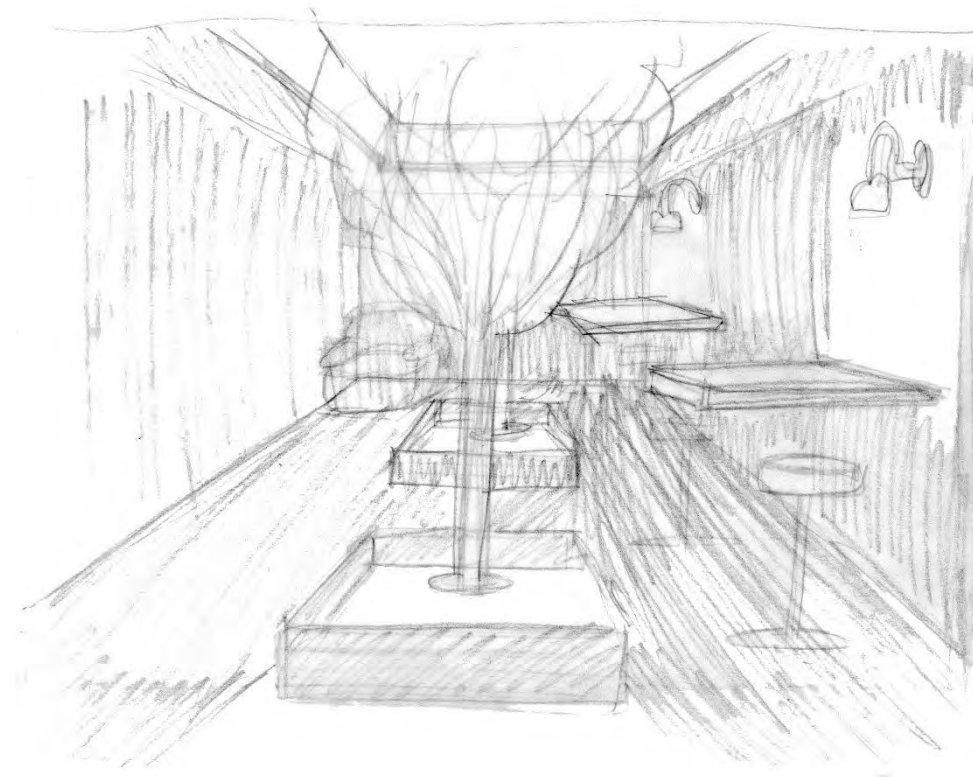
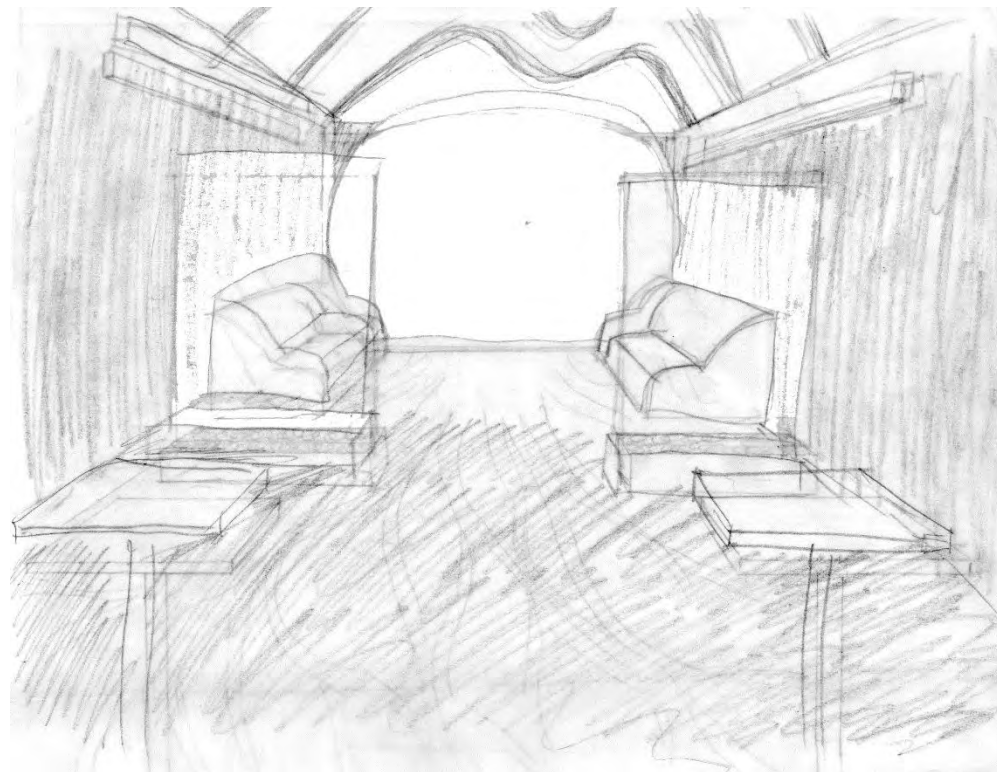
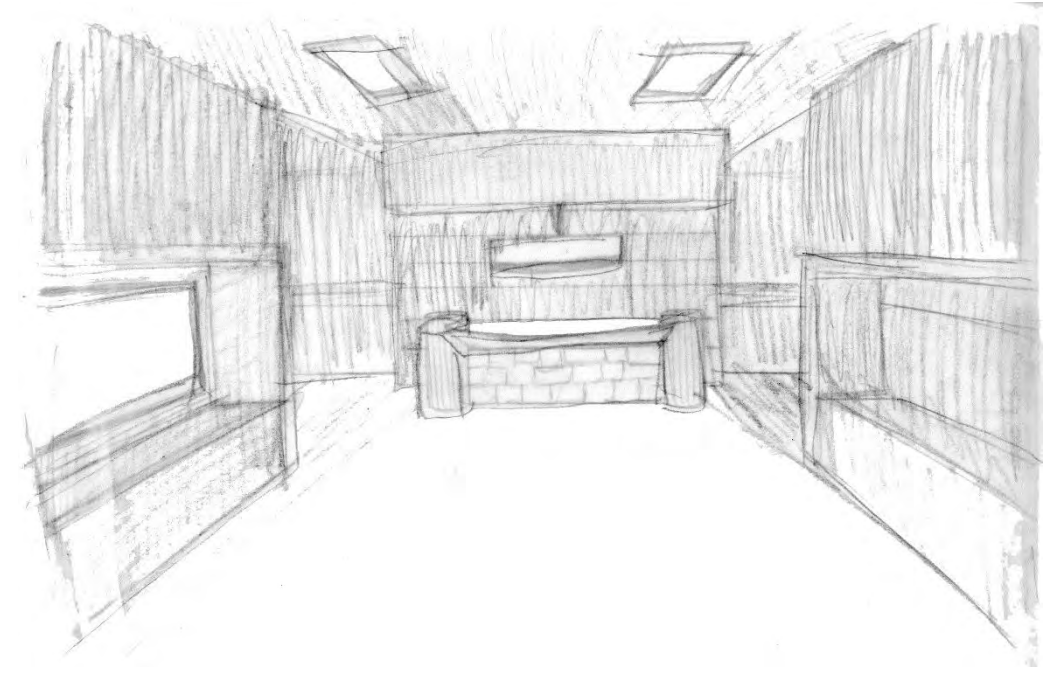
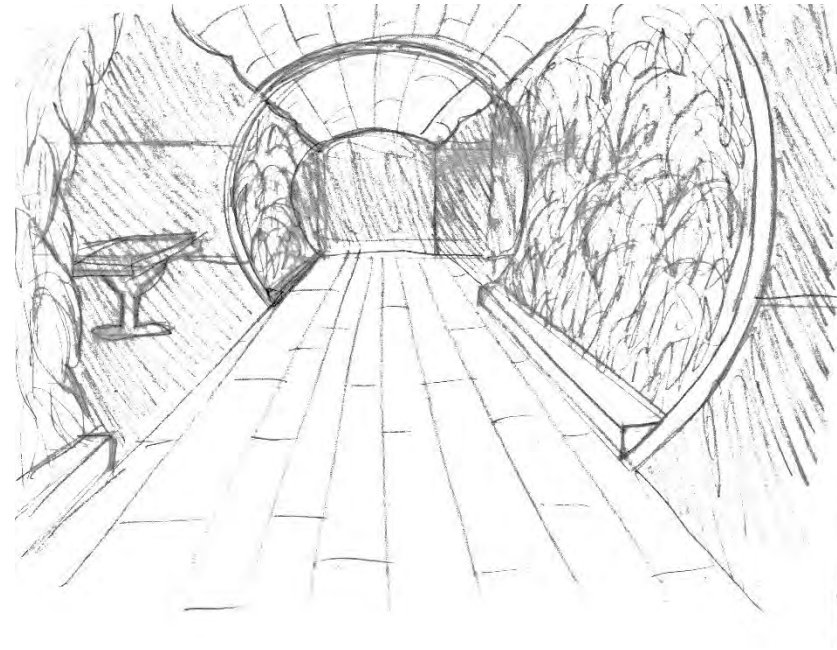
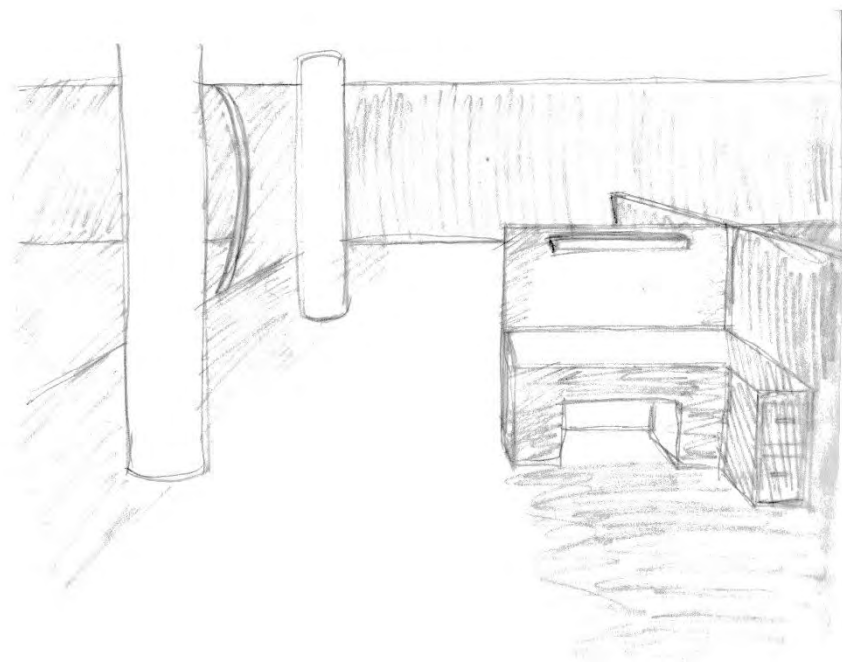
ASSIGNMENT 8: LOUNGE SKETCHES



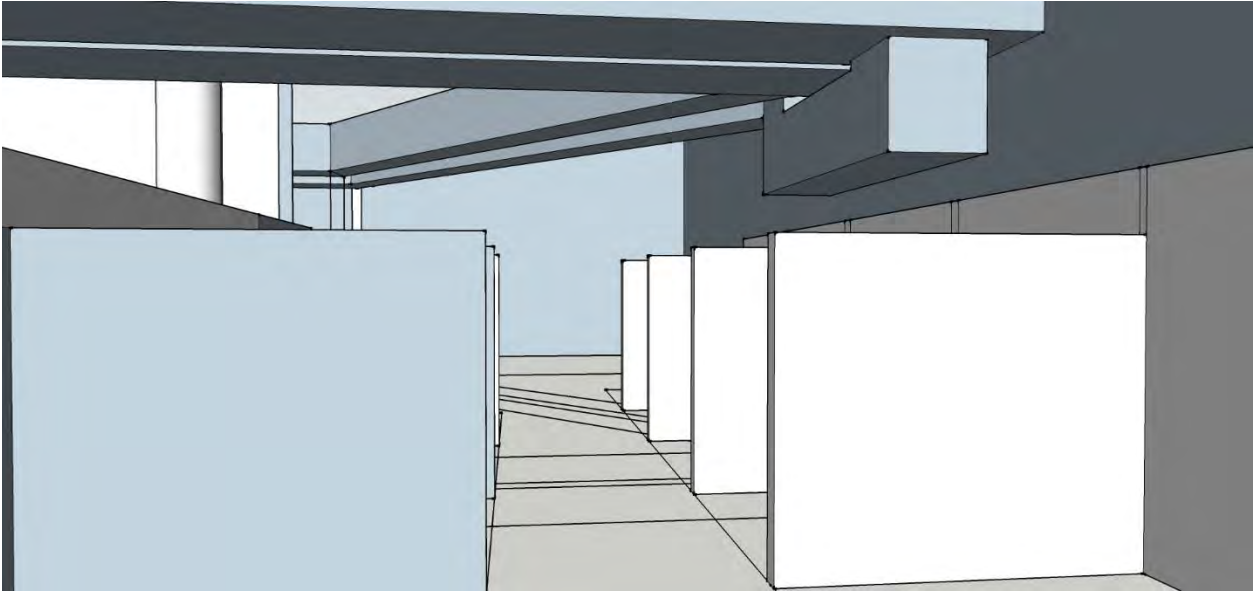
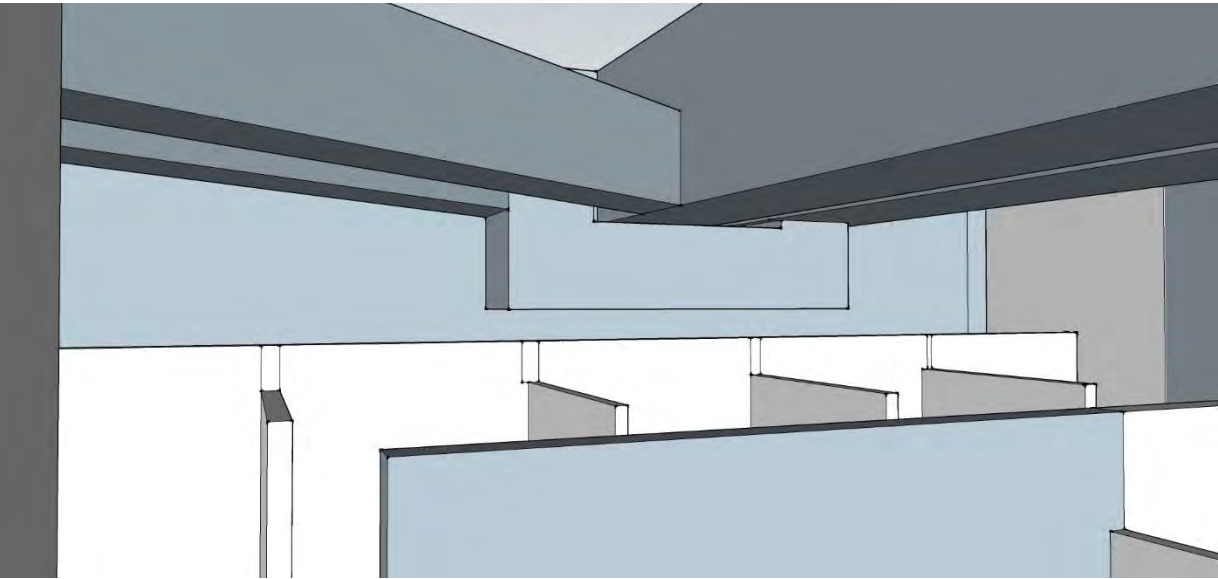
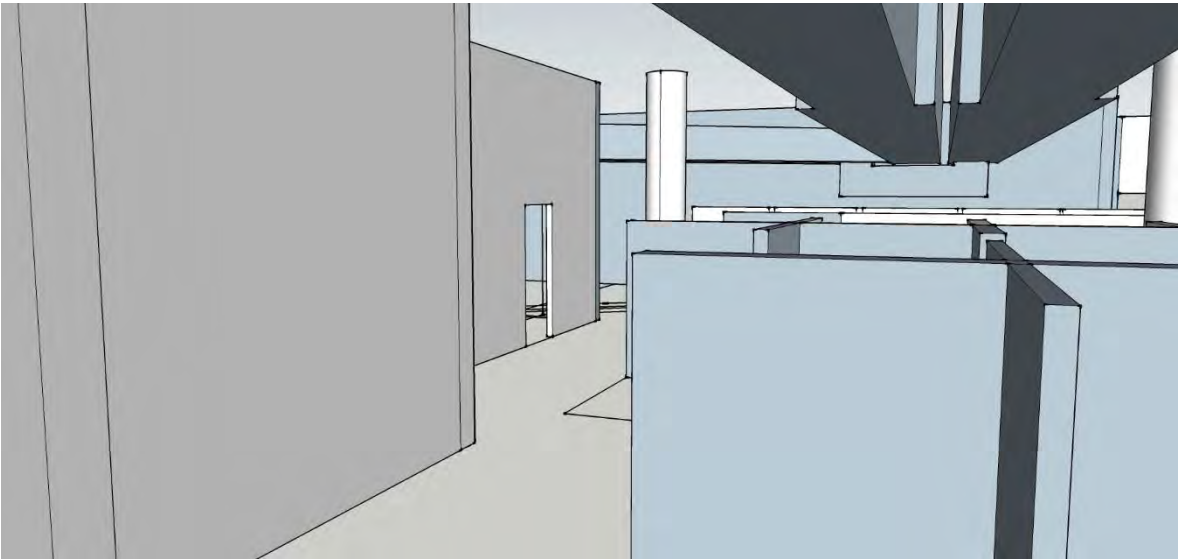
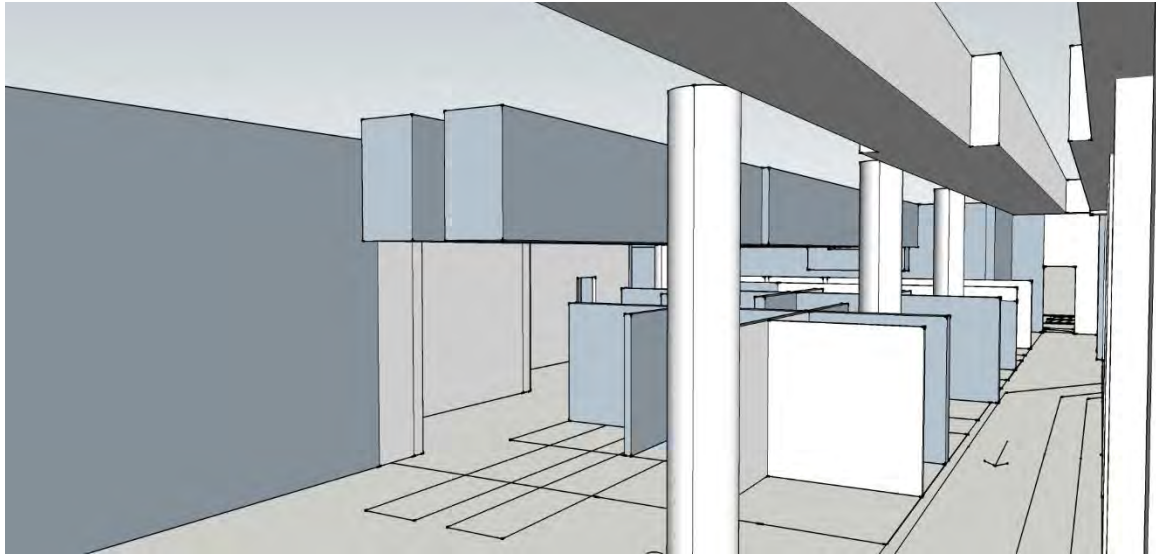
OPEN WORK STATIONS



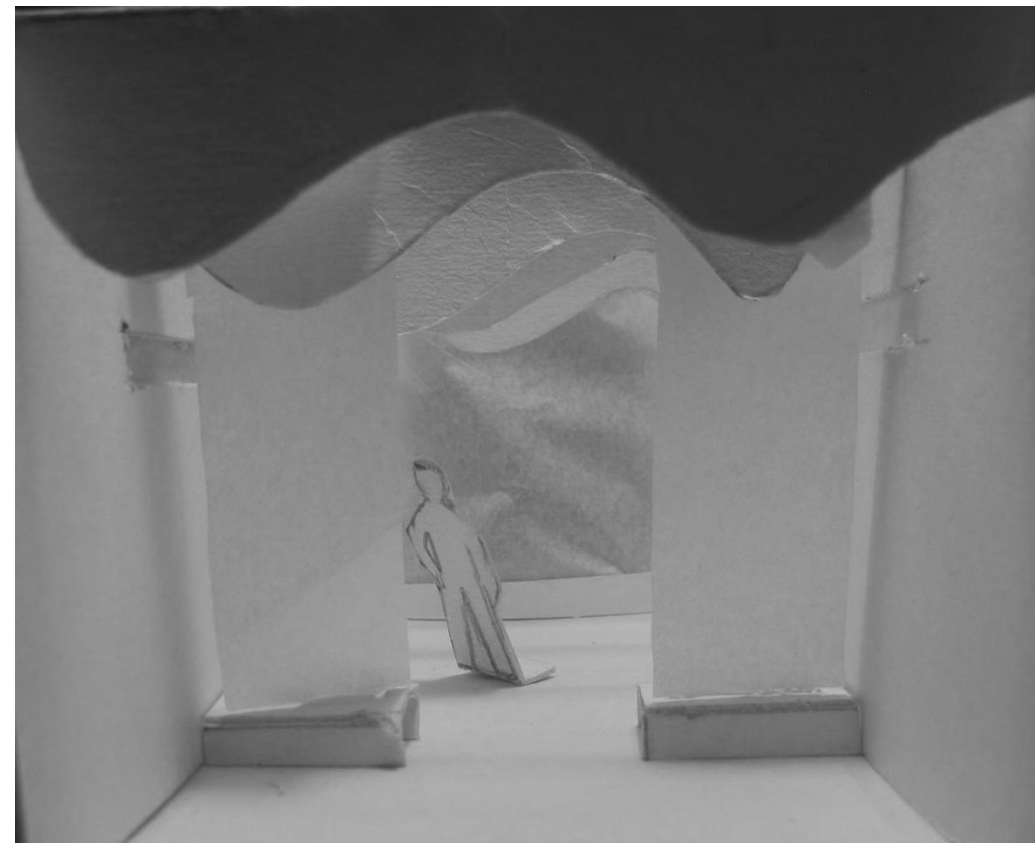
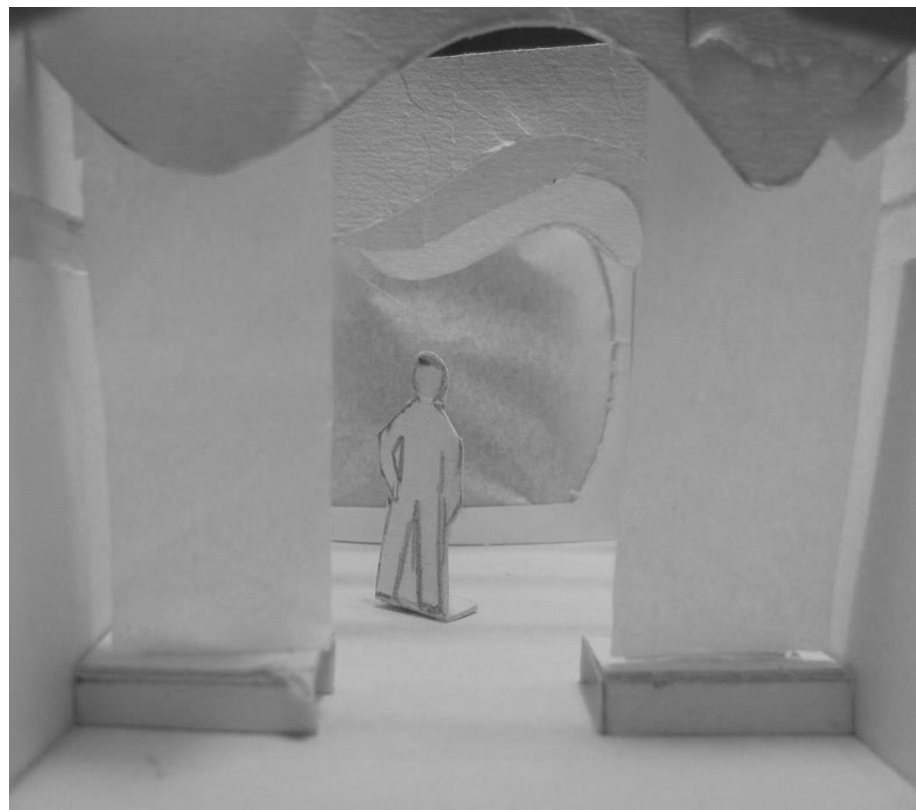
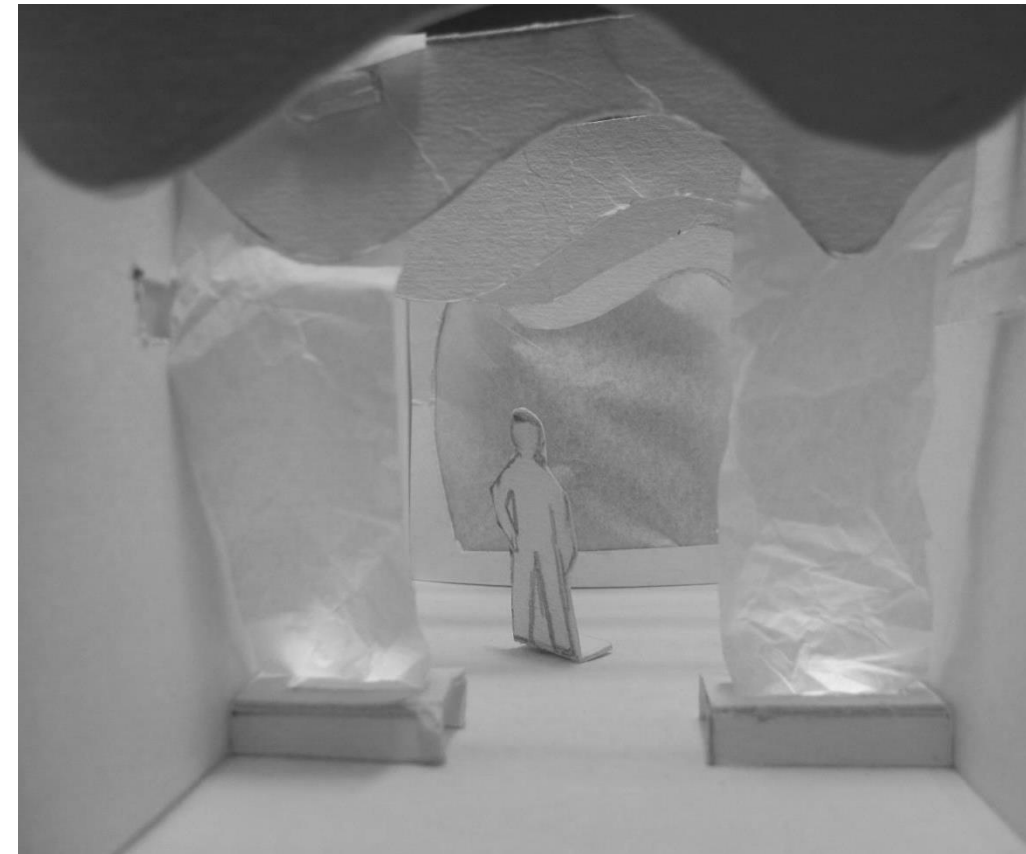
ASSIGNMENT 9: LIGHT SKETCHES



SYSTEMS RCP



ASSIGNMENT10: LIGHT MODEL



SUSTAINABILITY STATEMENT

The sustainability of this design will be seen through the arrangement of its products and materials in the space. The materials are as follows:

- Bamboo in the reception area
- Green plant walls along the main corridor
- Recycled plastics throughout the space
- Recycled tile along the main corridor and in the reception area
- Cork will be used to back the work stations and certain walls in the space to allow for brainstorming and sustainability.

Another aspect of sustainability is the building itself. The Edgeworth building is a historical monument that has been remodeled into office spaces. It has a lower amount of embodied energy because the whole building is being remodeled with local materials. This allows less energy to be spent because less energy is being poured into the retrieving of resources.

