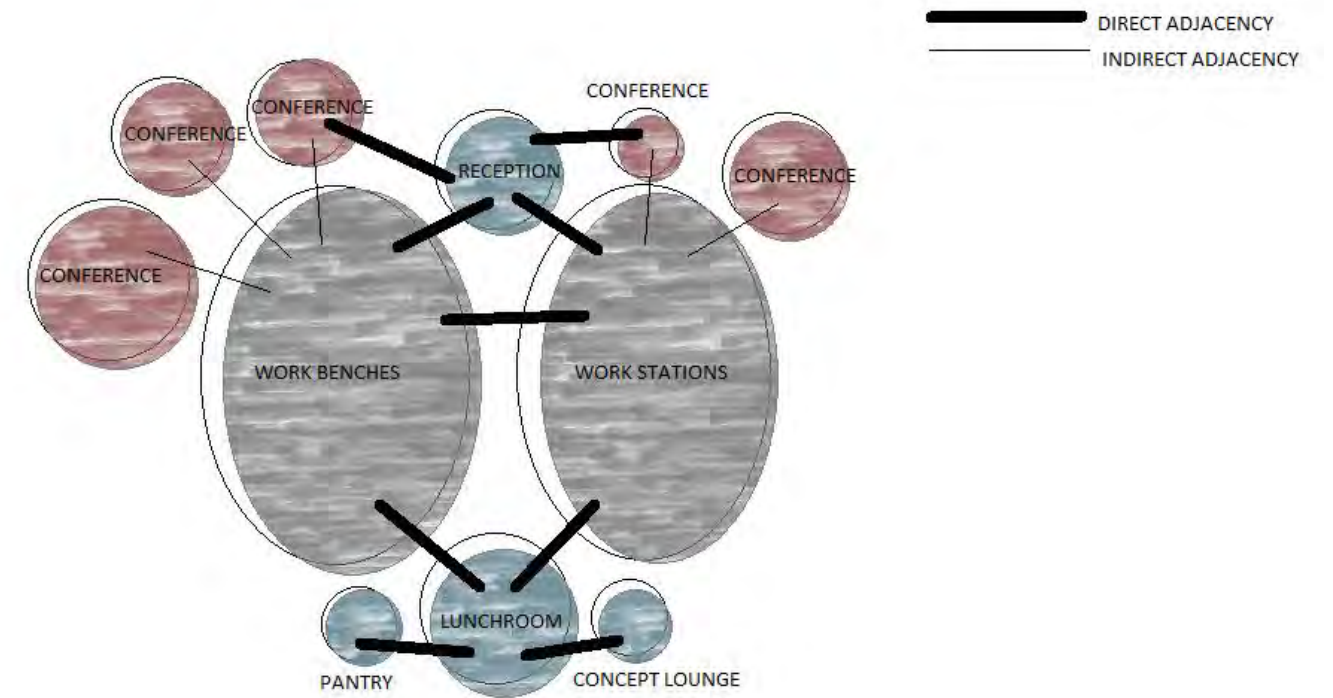
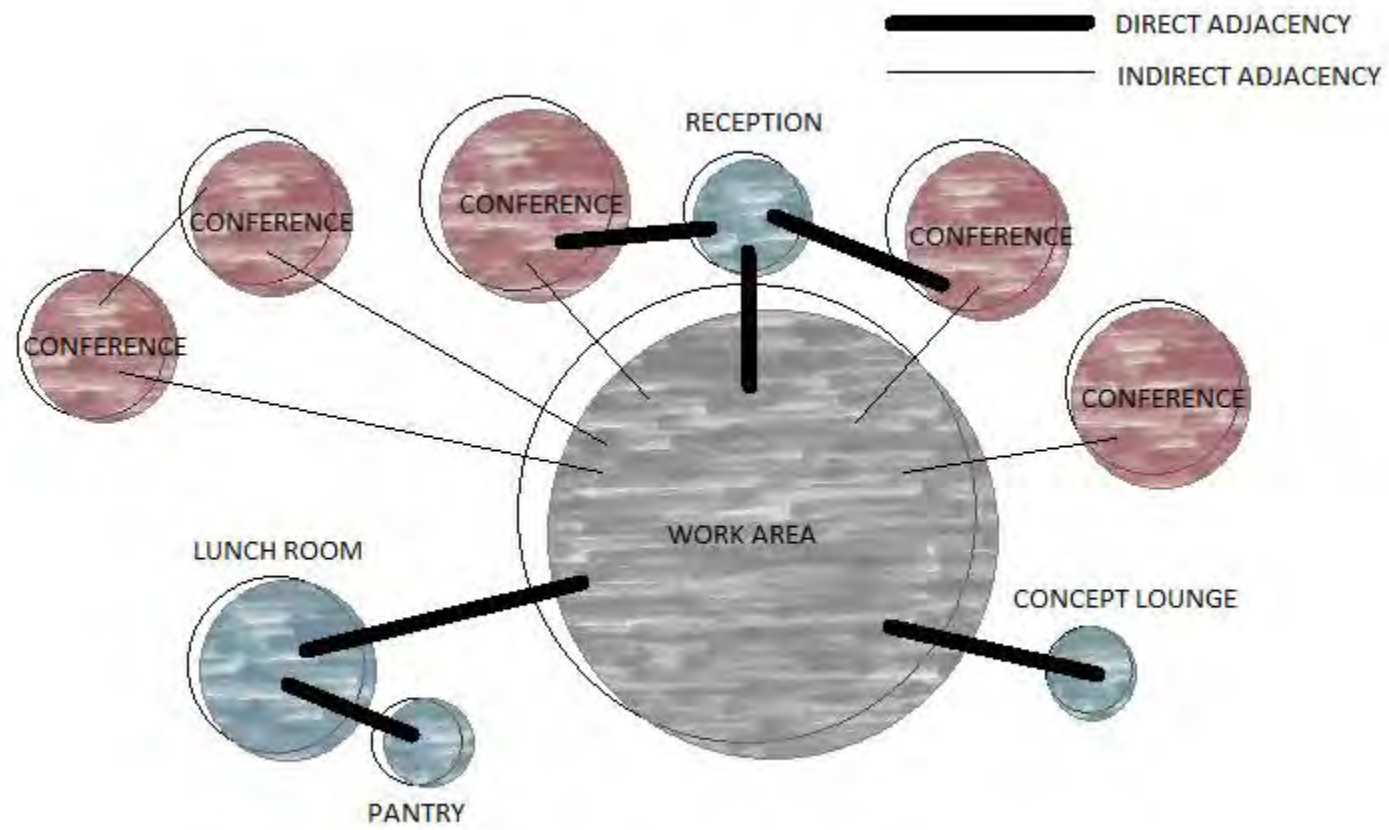


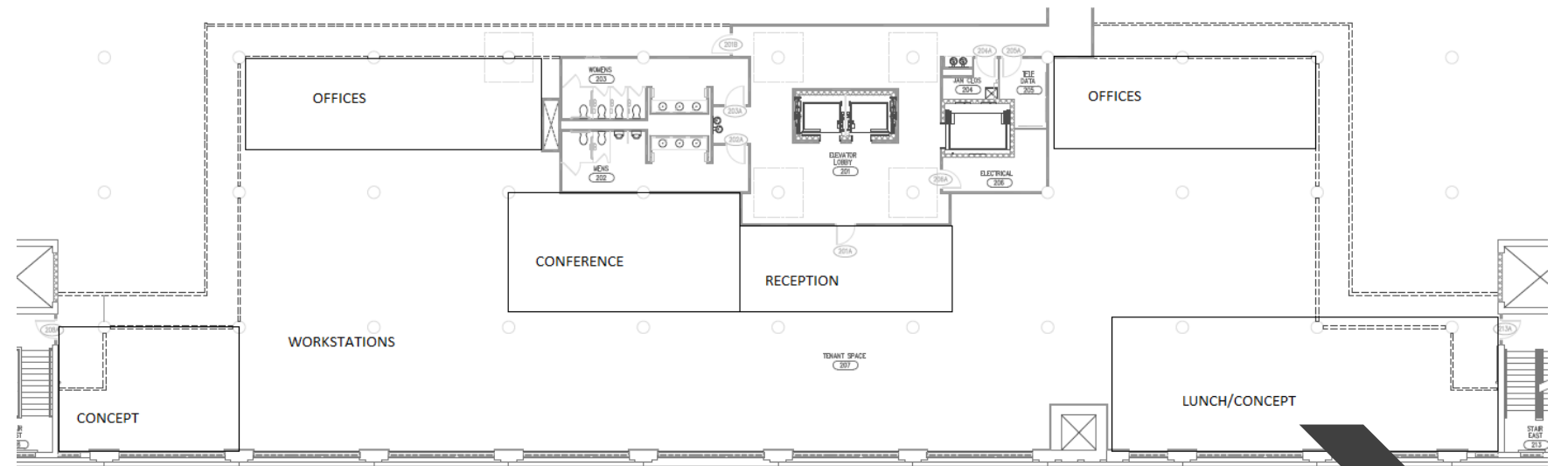
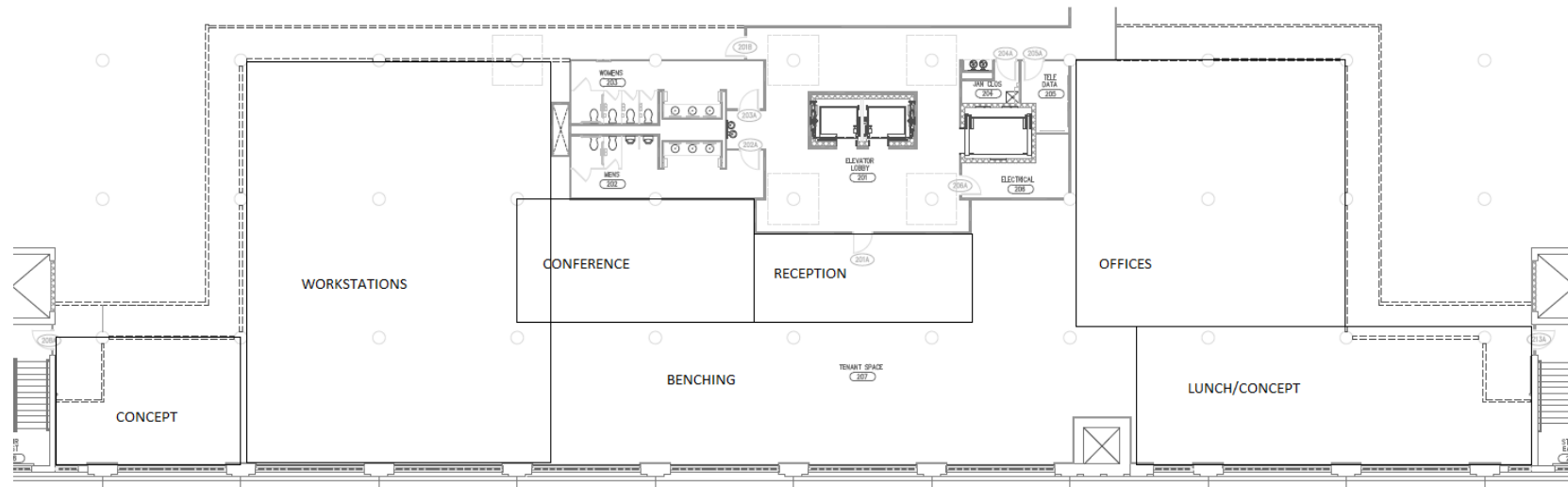
Portfolio 1

Nicole Lobell

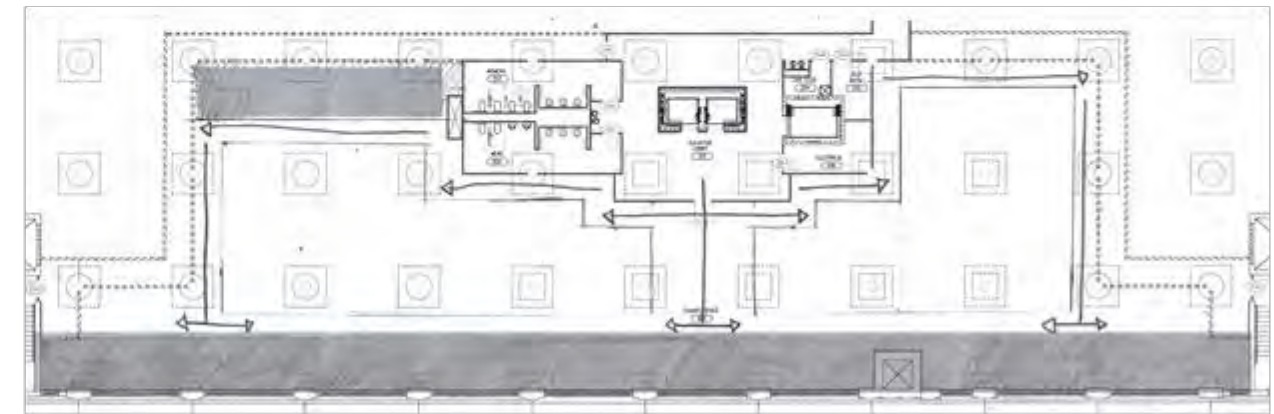
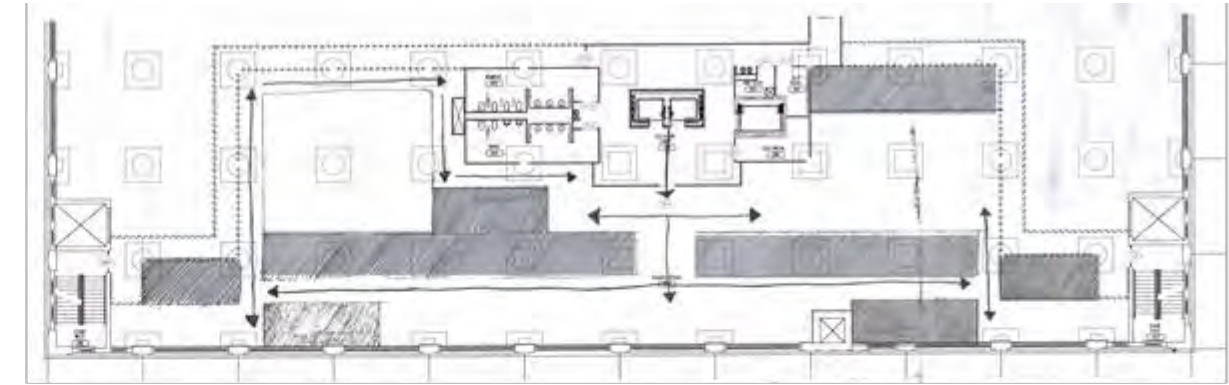
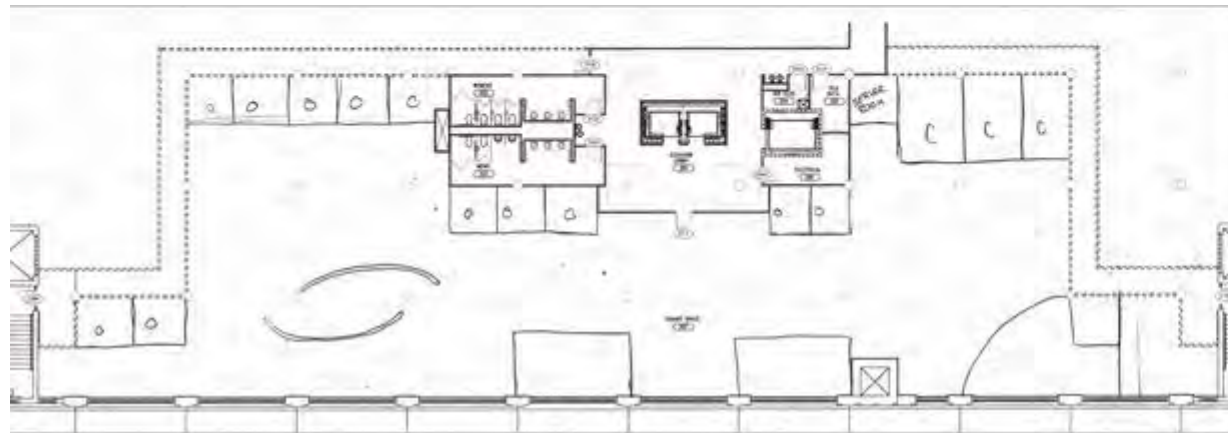
IDSN 3600



Bubble Diagrams



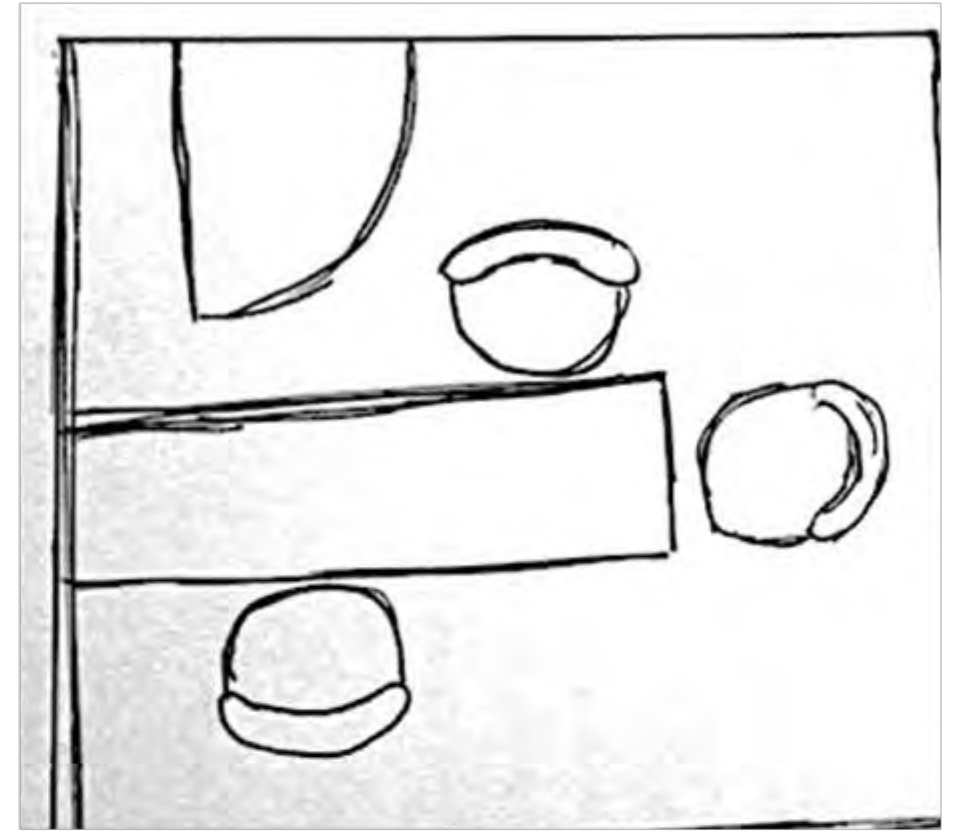
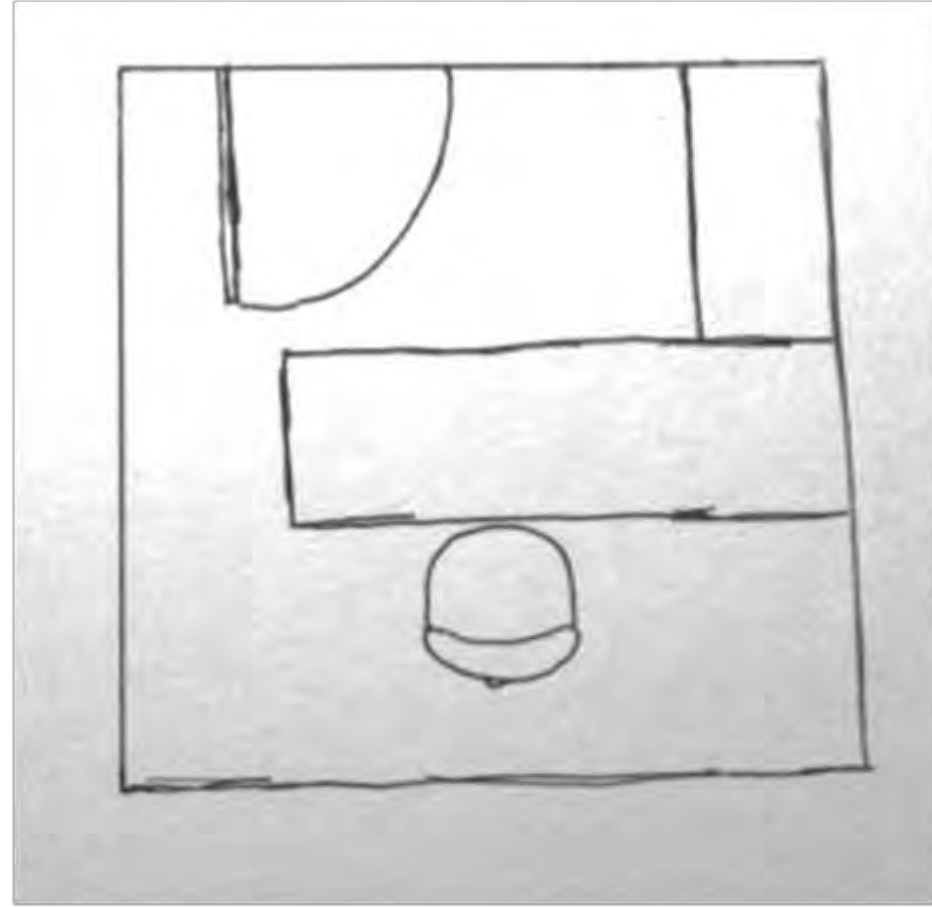
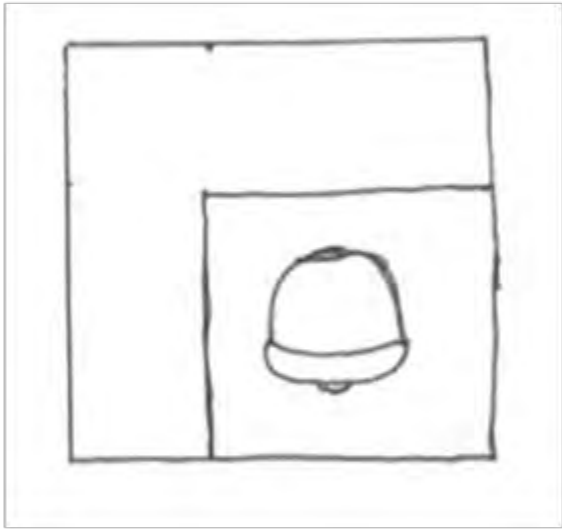
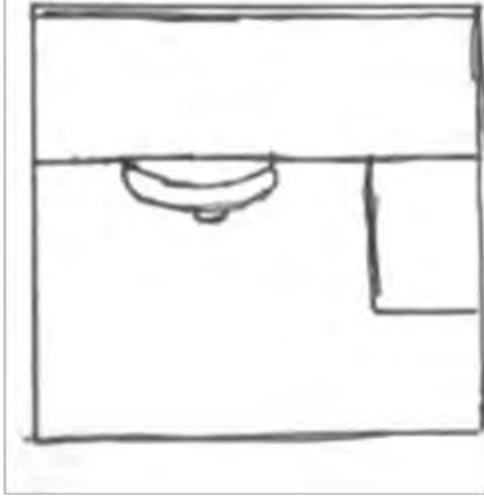
Blocking Diagram



Space Drawings

Assignment 4

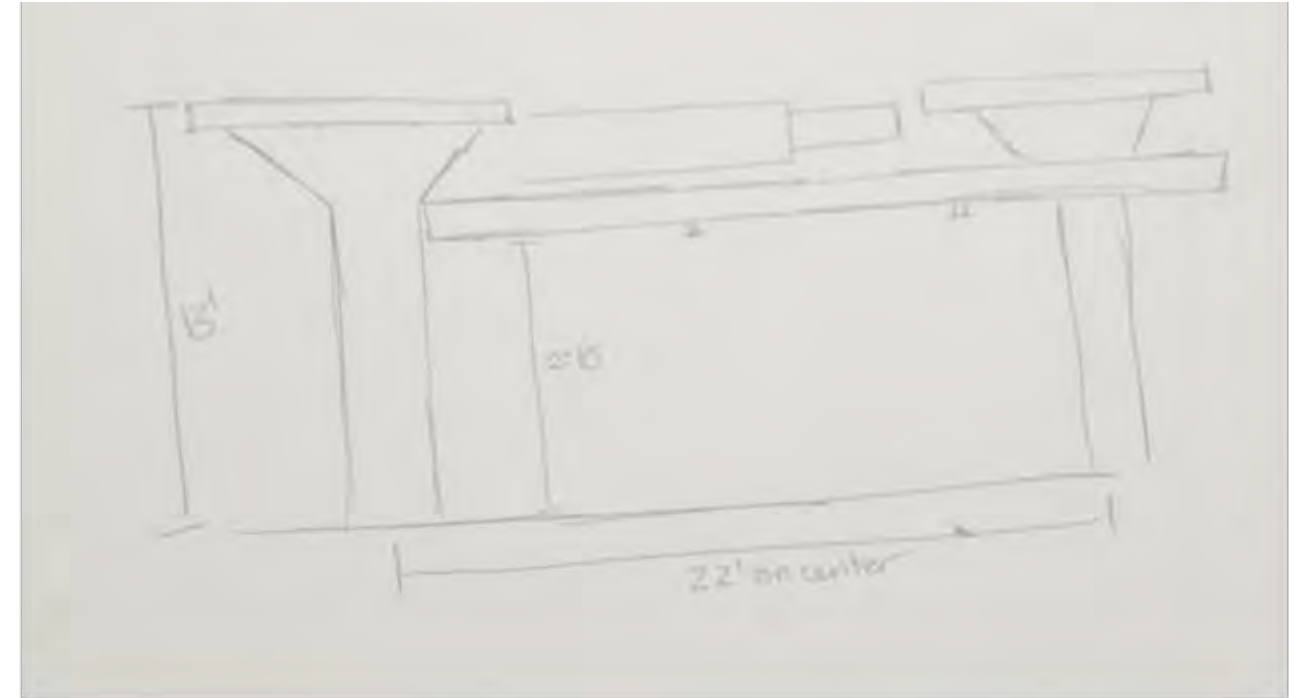
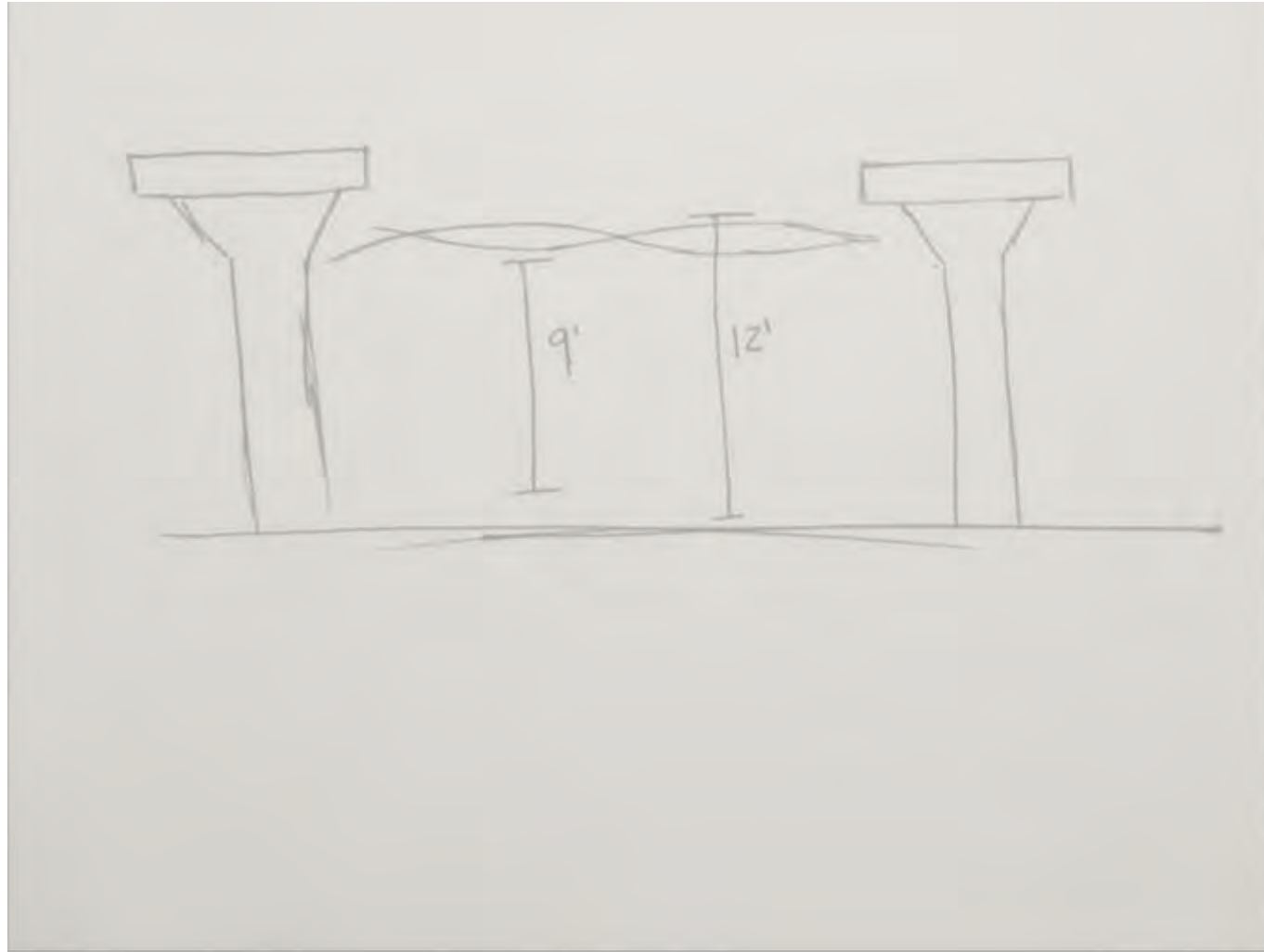
Page 3



Space Concepts

Assignment 5

Page 4



Section Sketches

Assignment 5

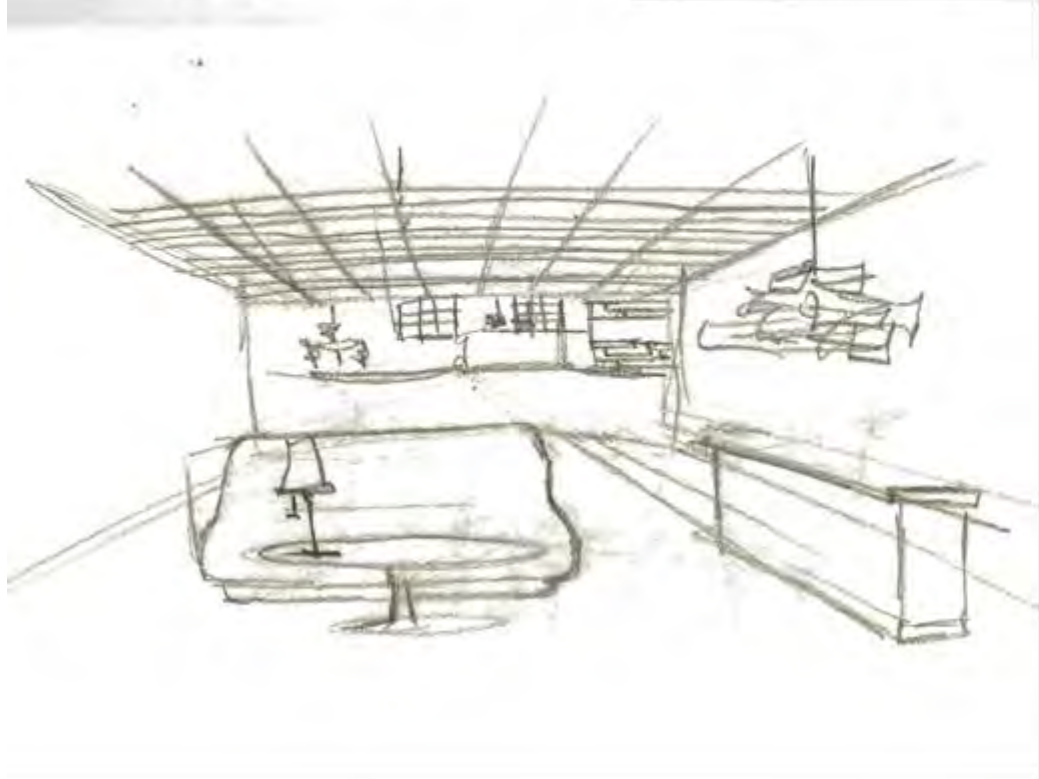
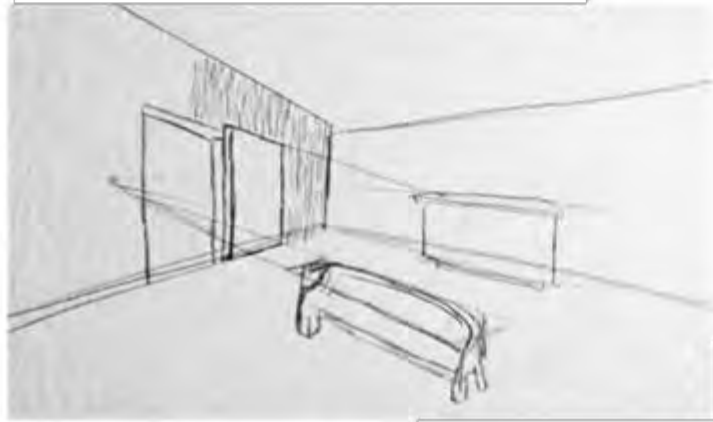
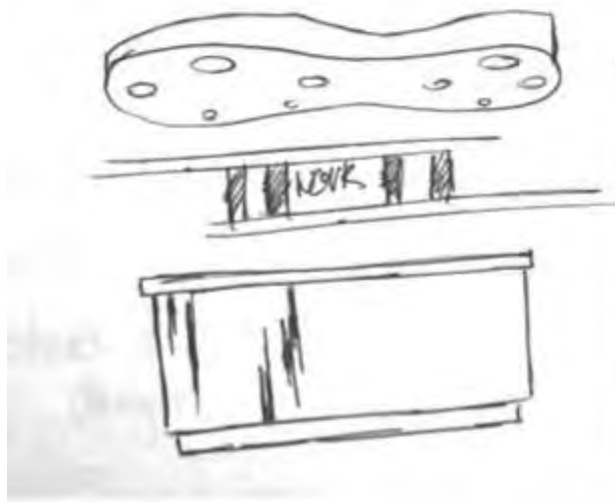
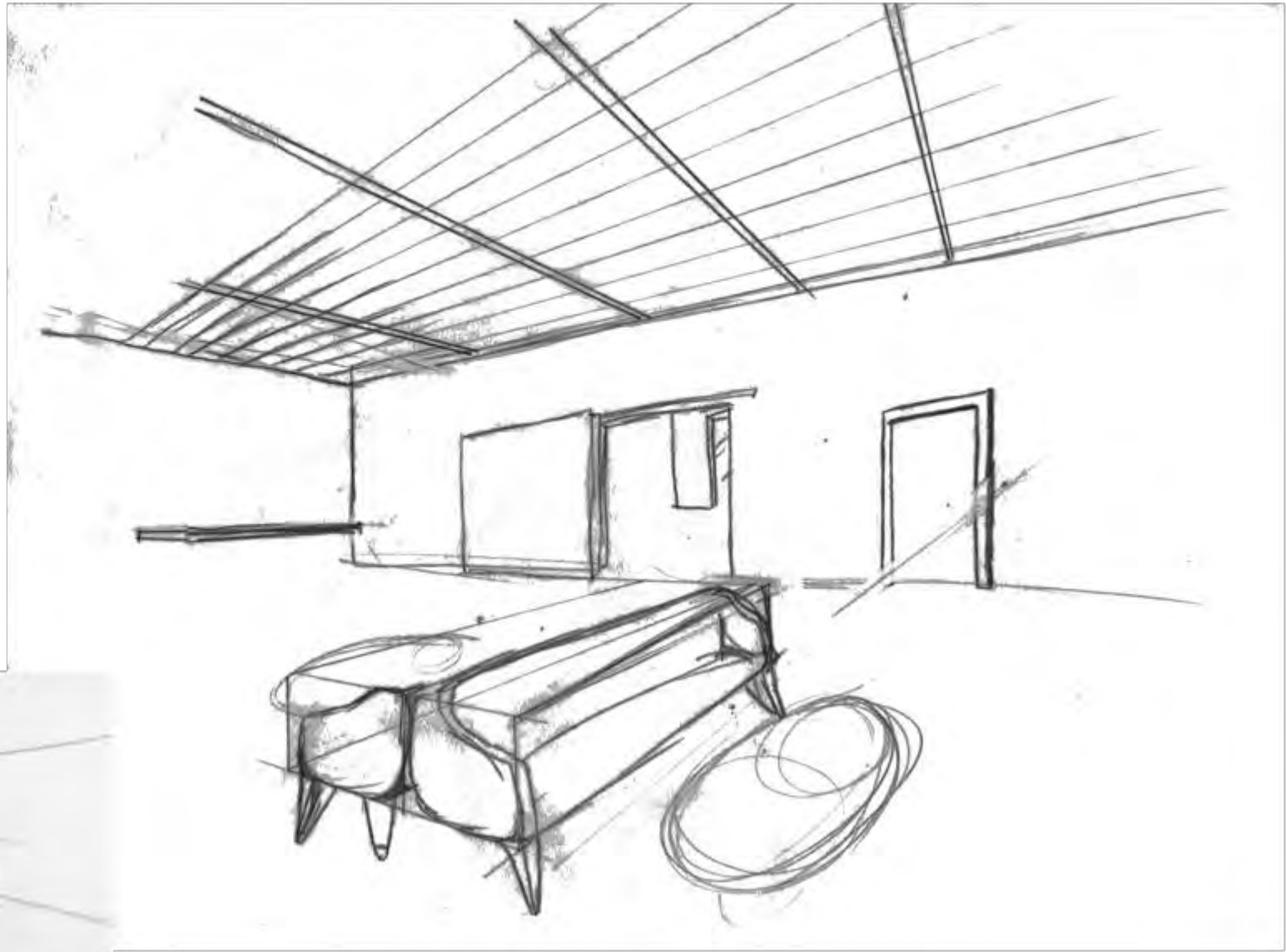
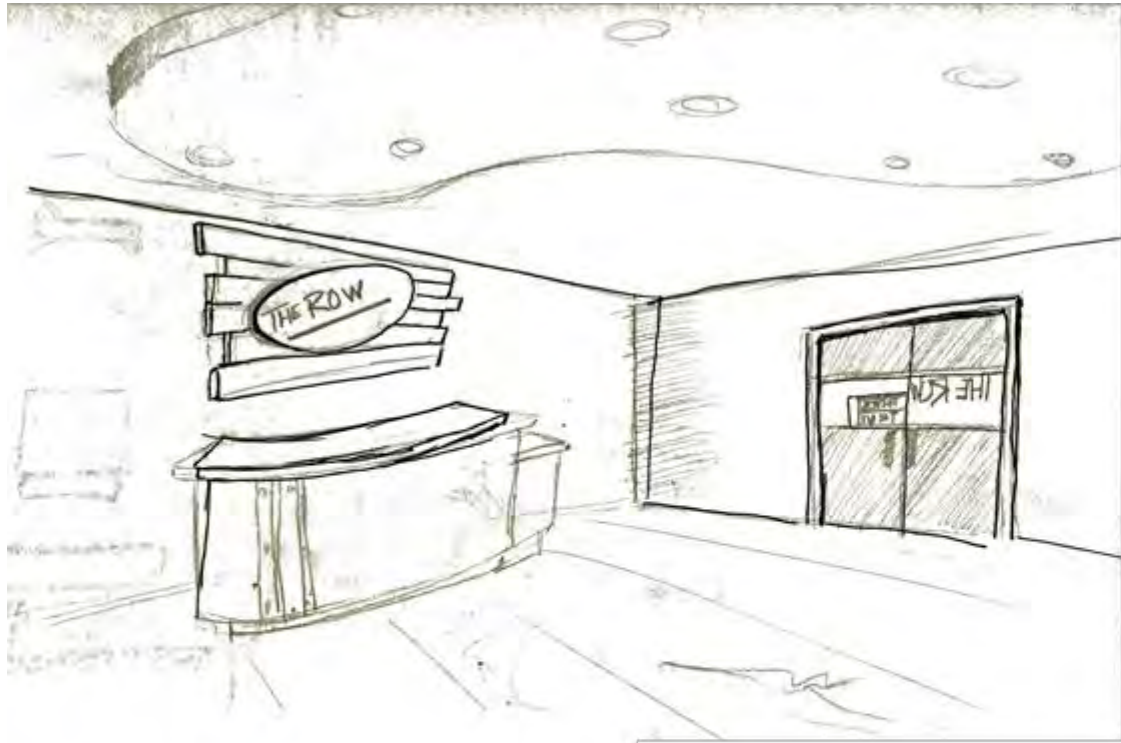
Page 5



Space Plan Sketches

Assignment 6

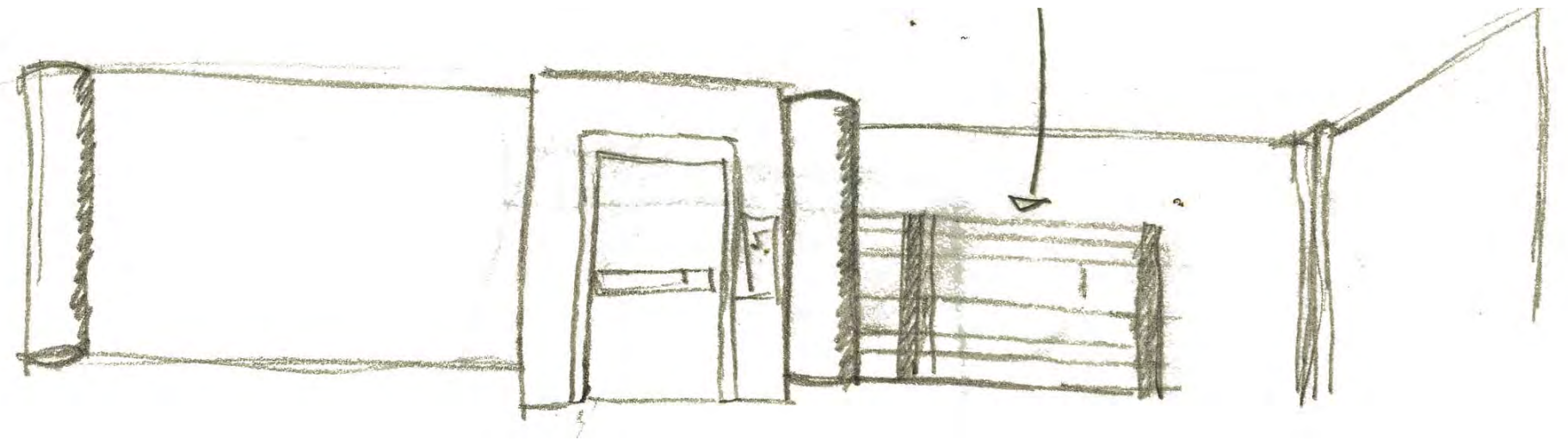
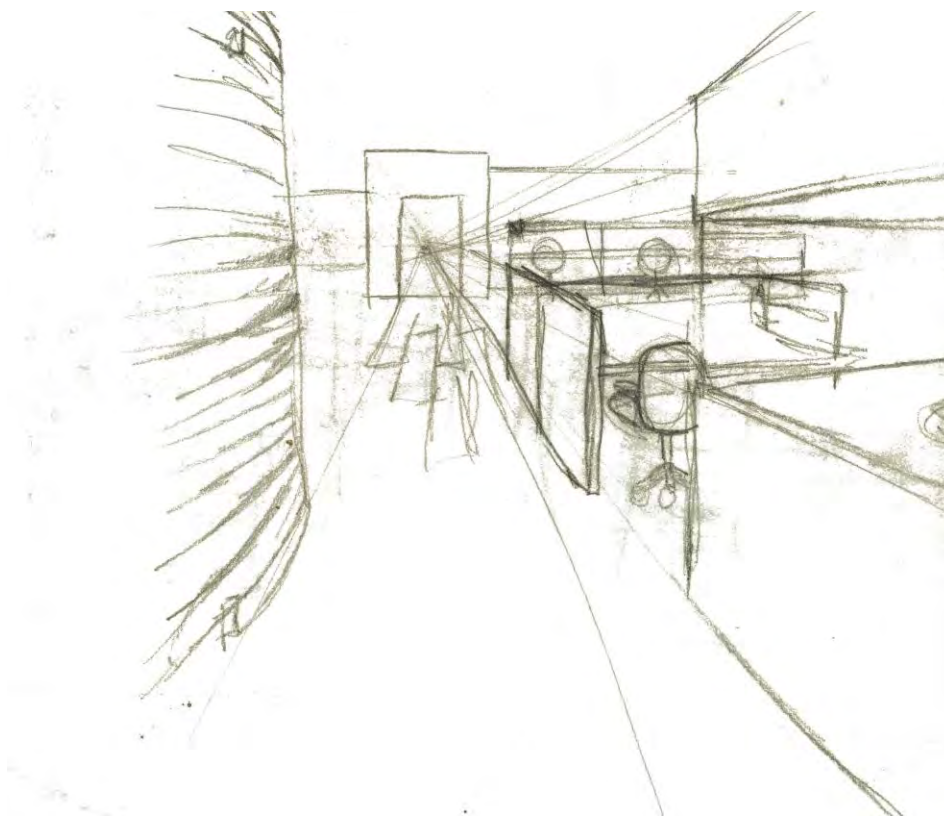
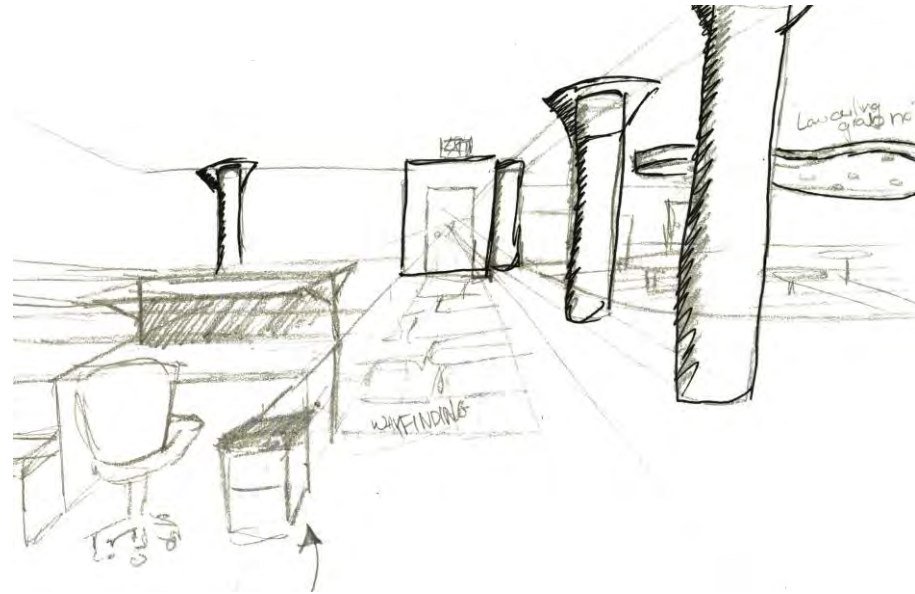
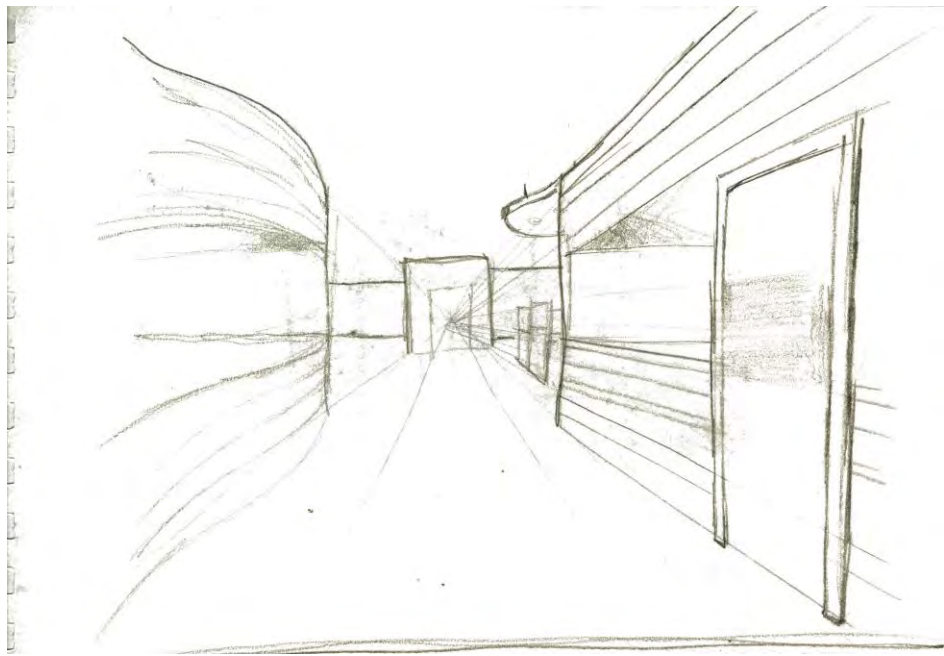
Page 6

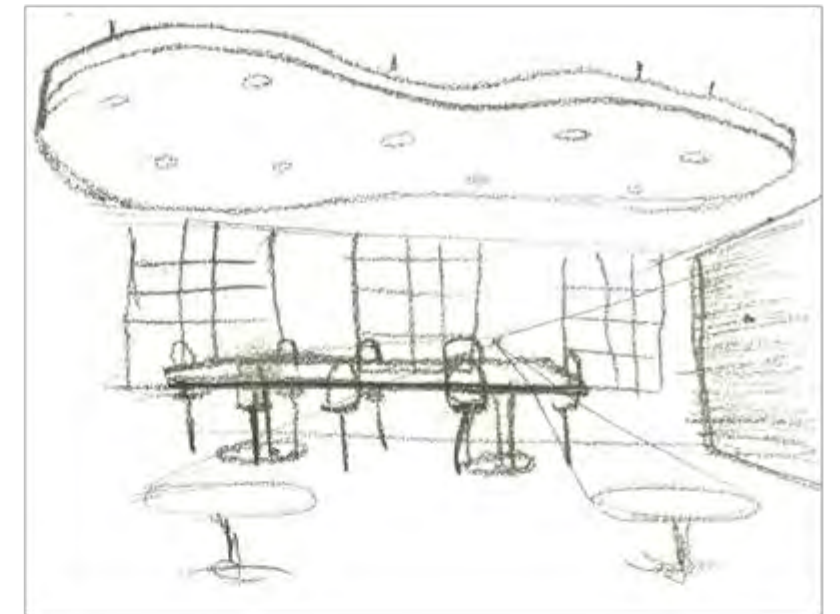
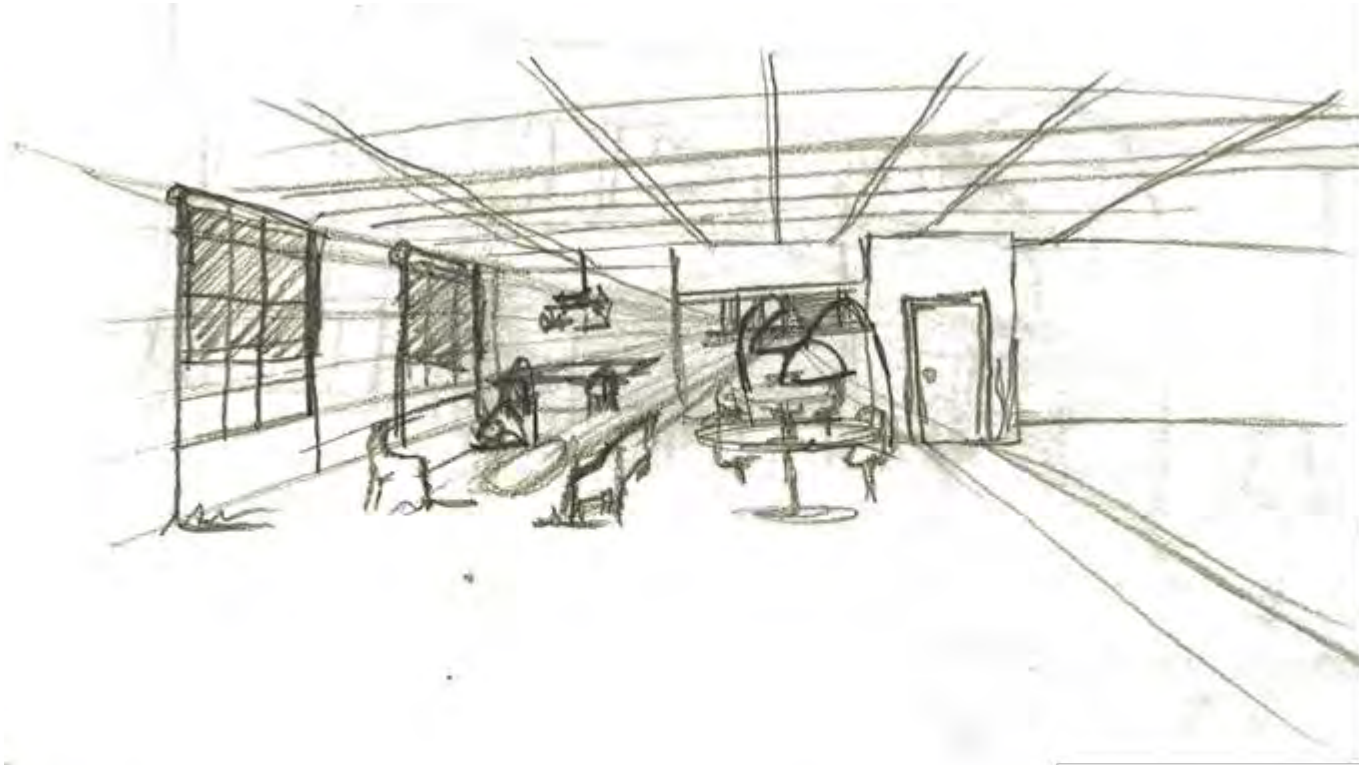


Entry Sketches

Assignment 7

Page 7

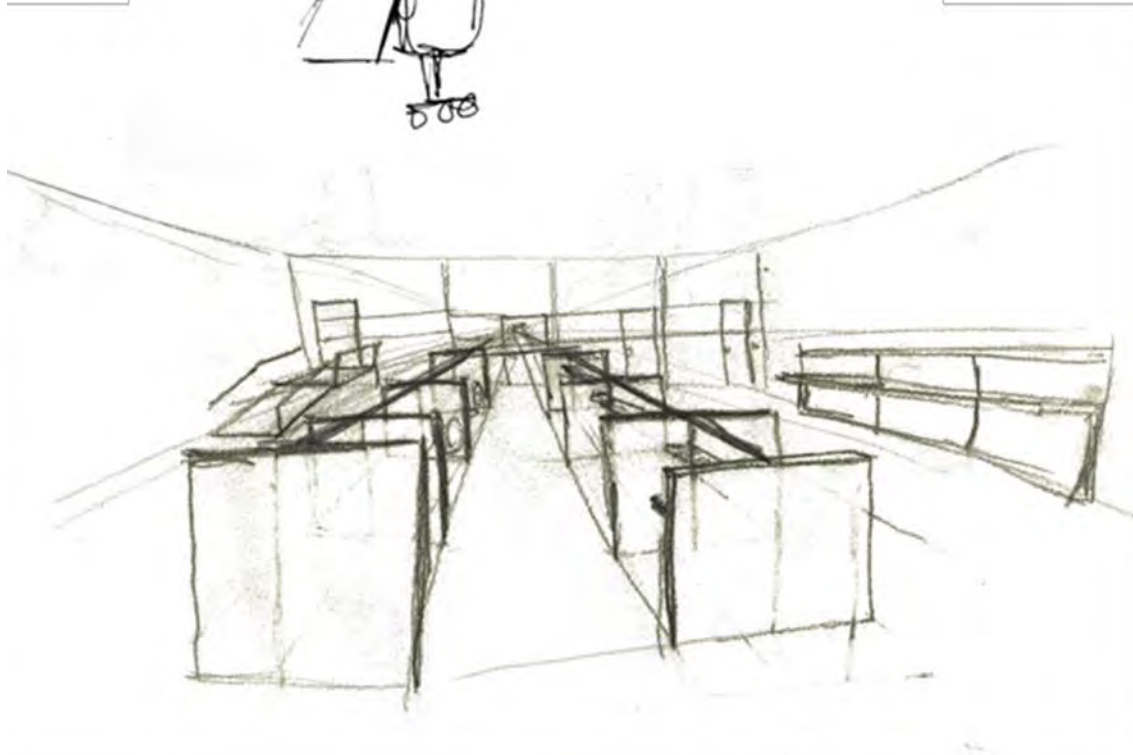
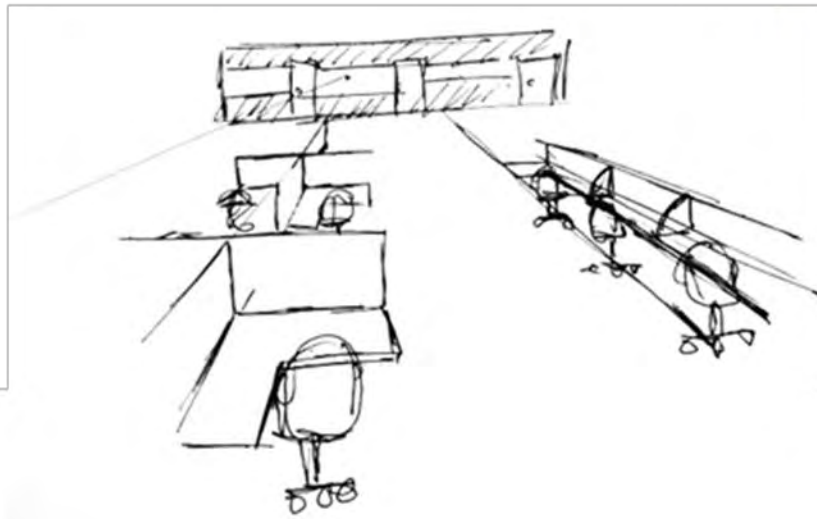
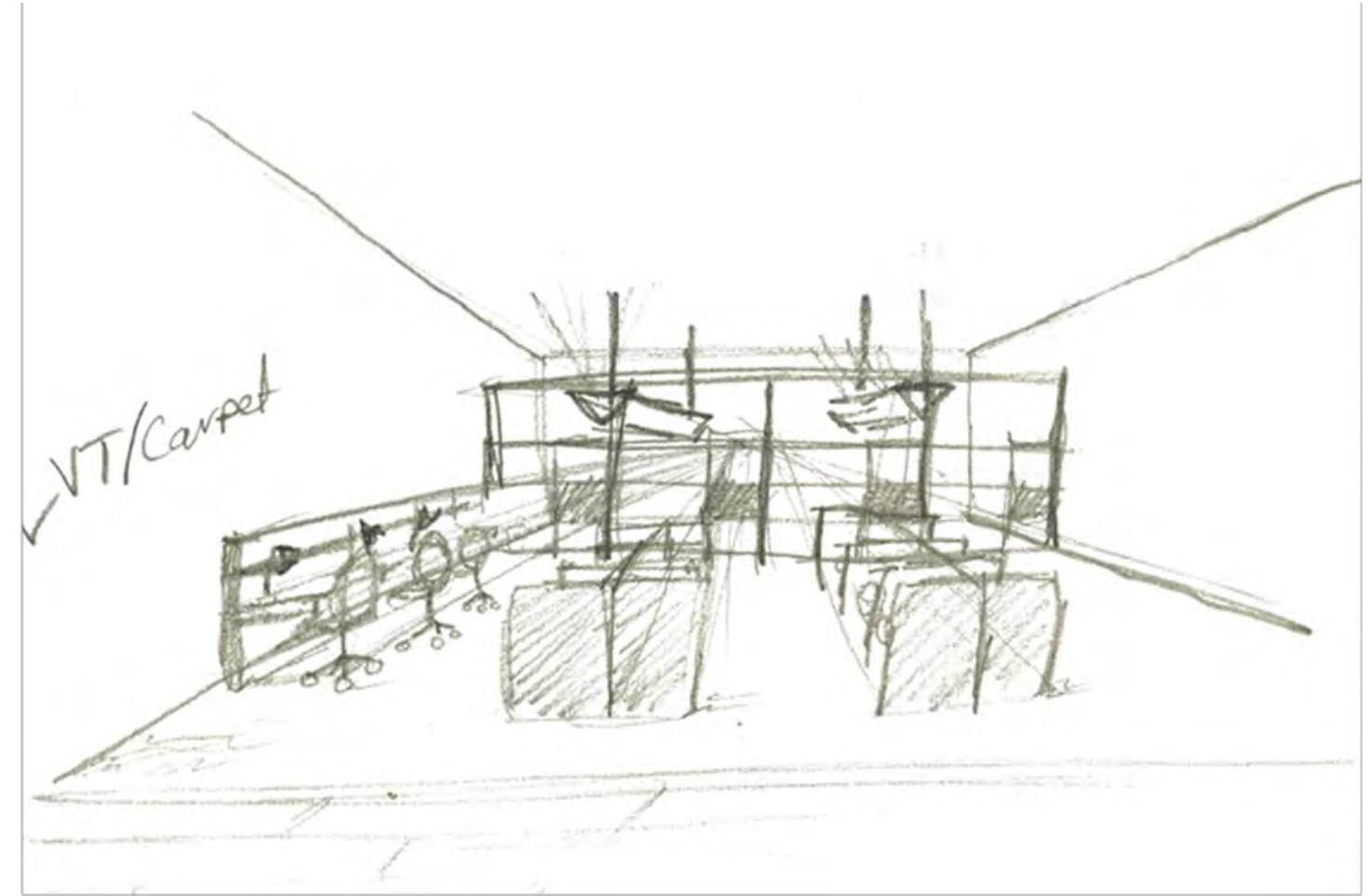
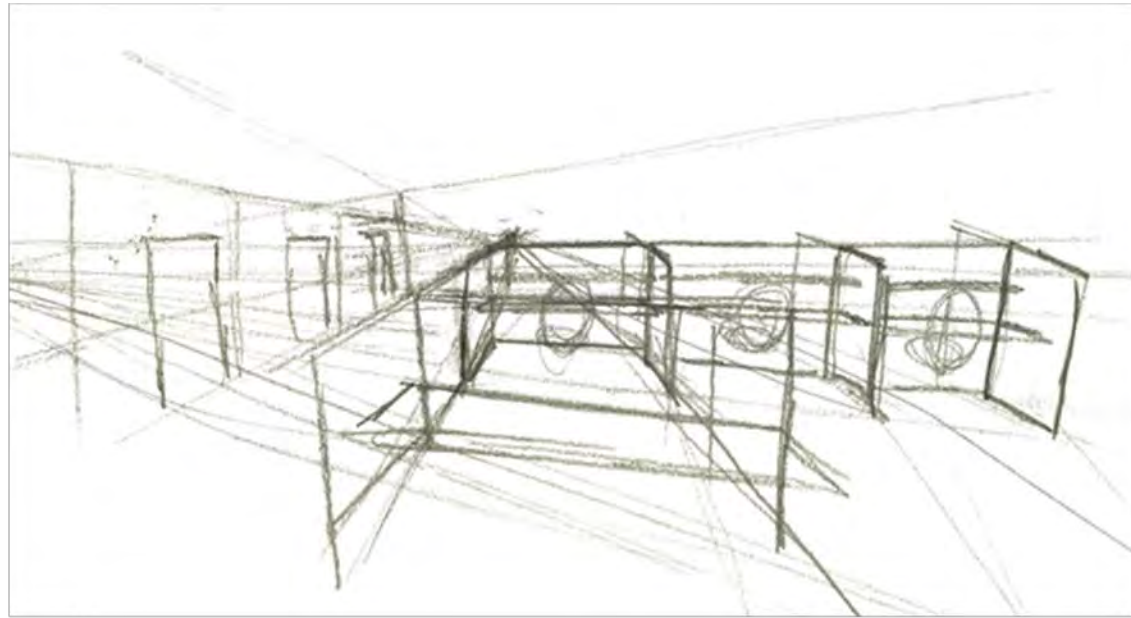




Lounge Sketches

Assignment 8

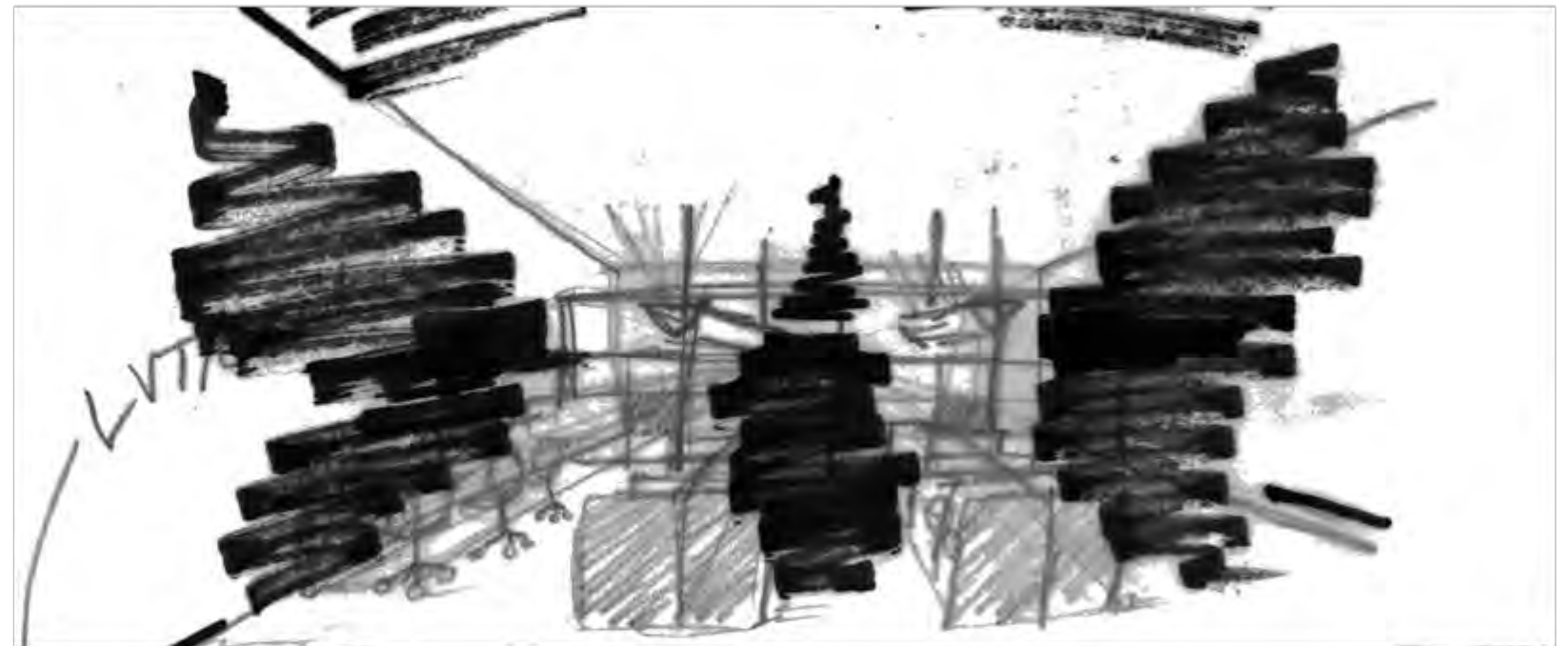
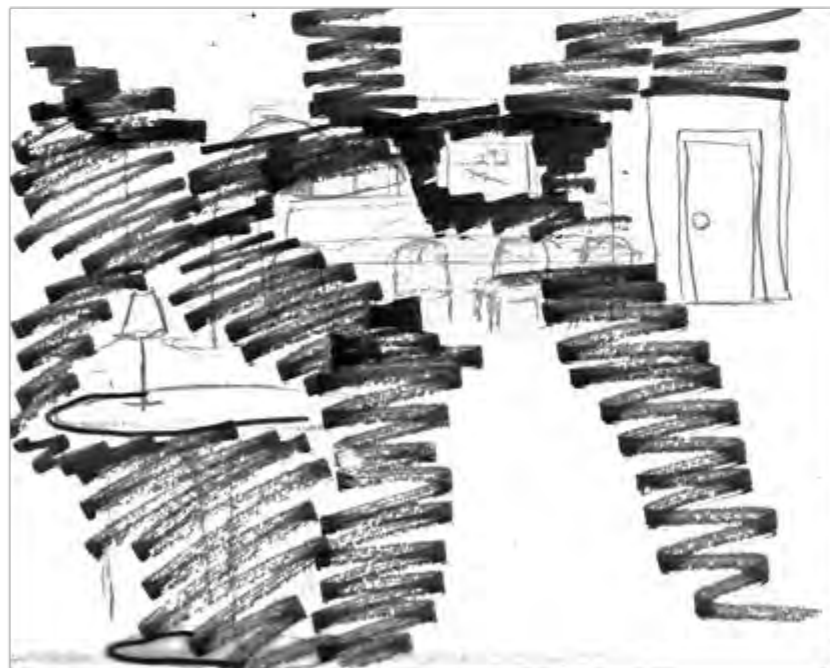
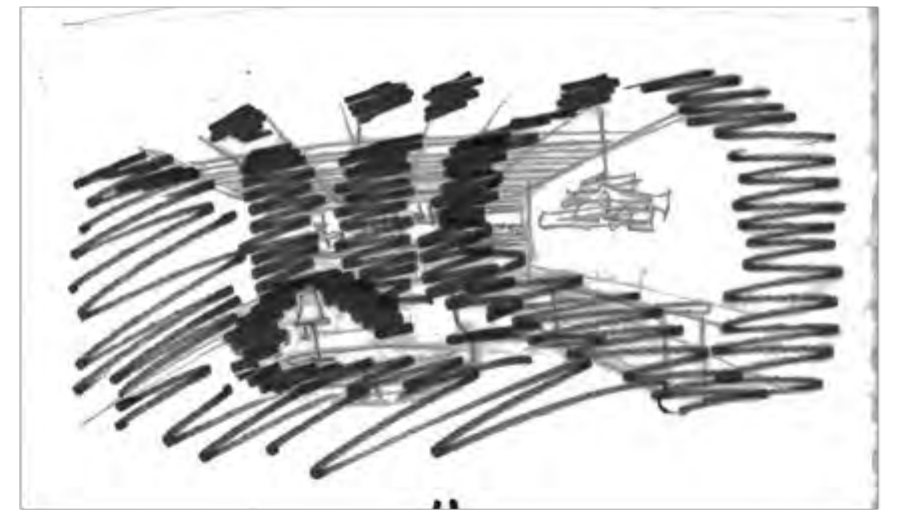
Page 9



Work Area Sketches

Assignment 8

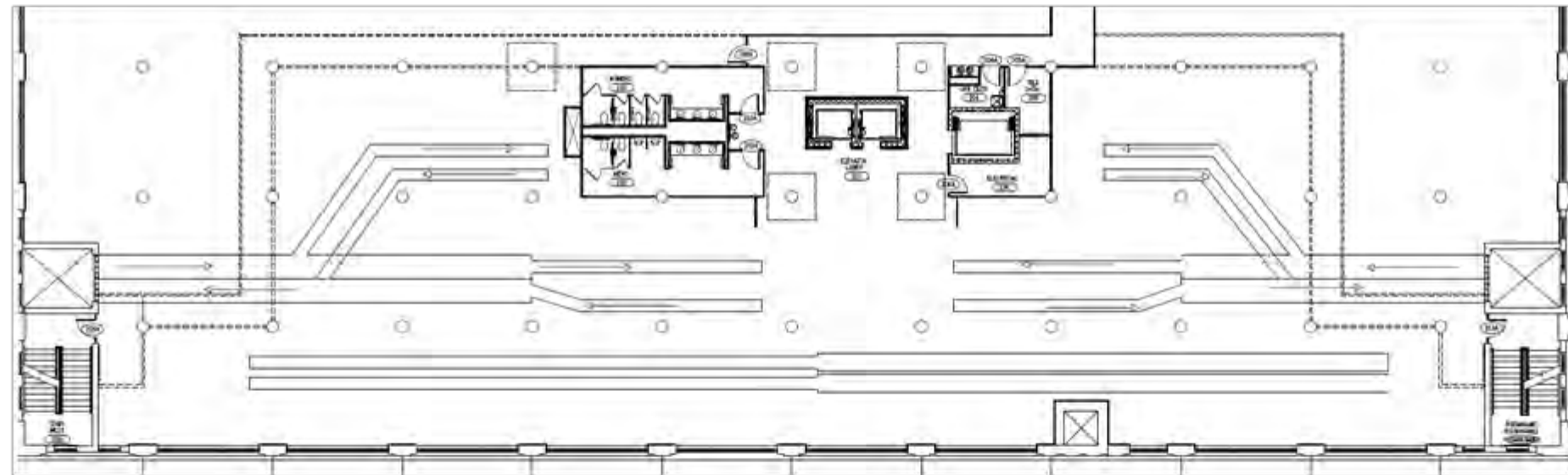
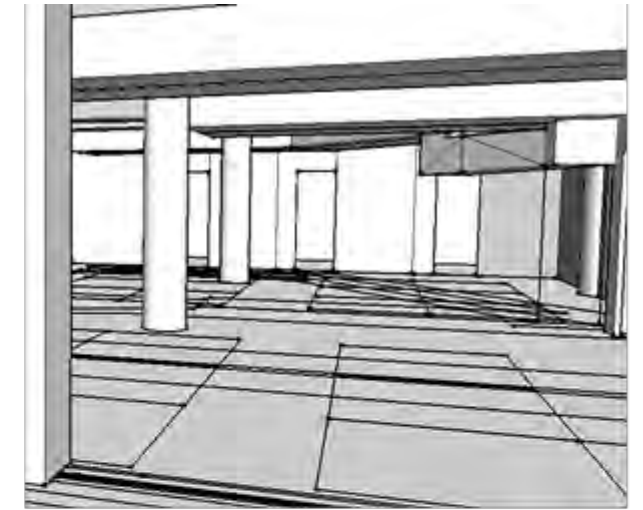
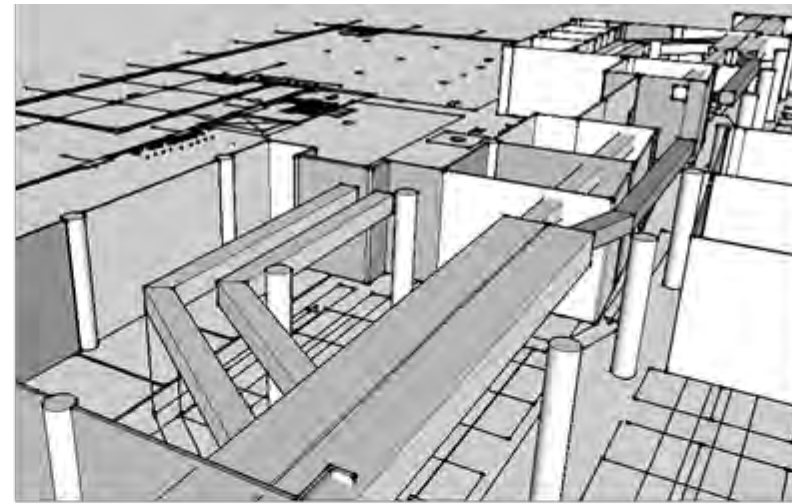
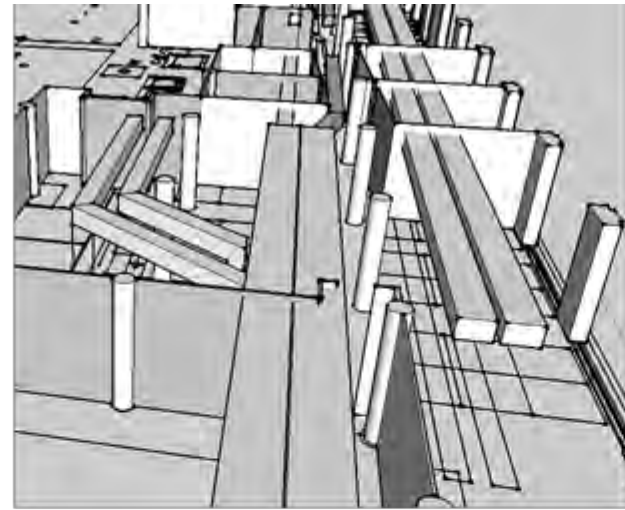
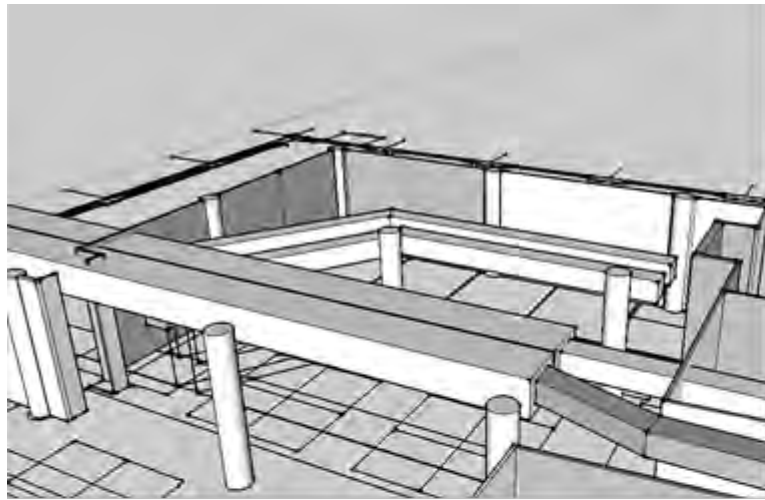
Page 10



Light Sketches

Assignment 9

Page 11



Systems RCP

Assignment 9

Page 12



Light Model

Assignment 10

Page 13

- Edgeworth building is adaptive reuse, thusly keeping the embodied energy of the building
- Locally sourced materials as much as possible, to keep shipping costs low
- Re-use furniture that has been sold back to Steelcase or Herman Miller
- Energy efficient lamps for lighting fixtures
- Take advantage of natural lighting and heating from sun in space
- Reduce ambient lighting, and increase individual task lighting at desk
- Energy efficient appliances (energy star) for pantry

