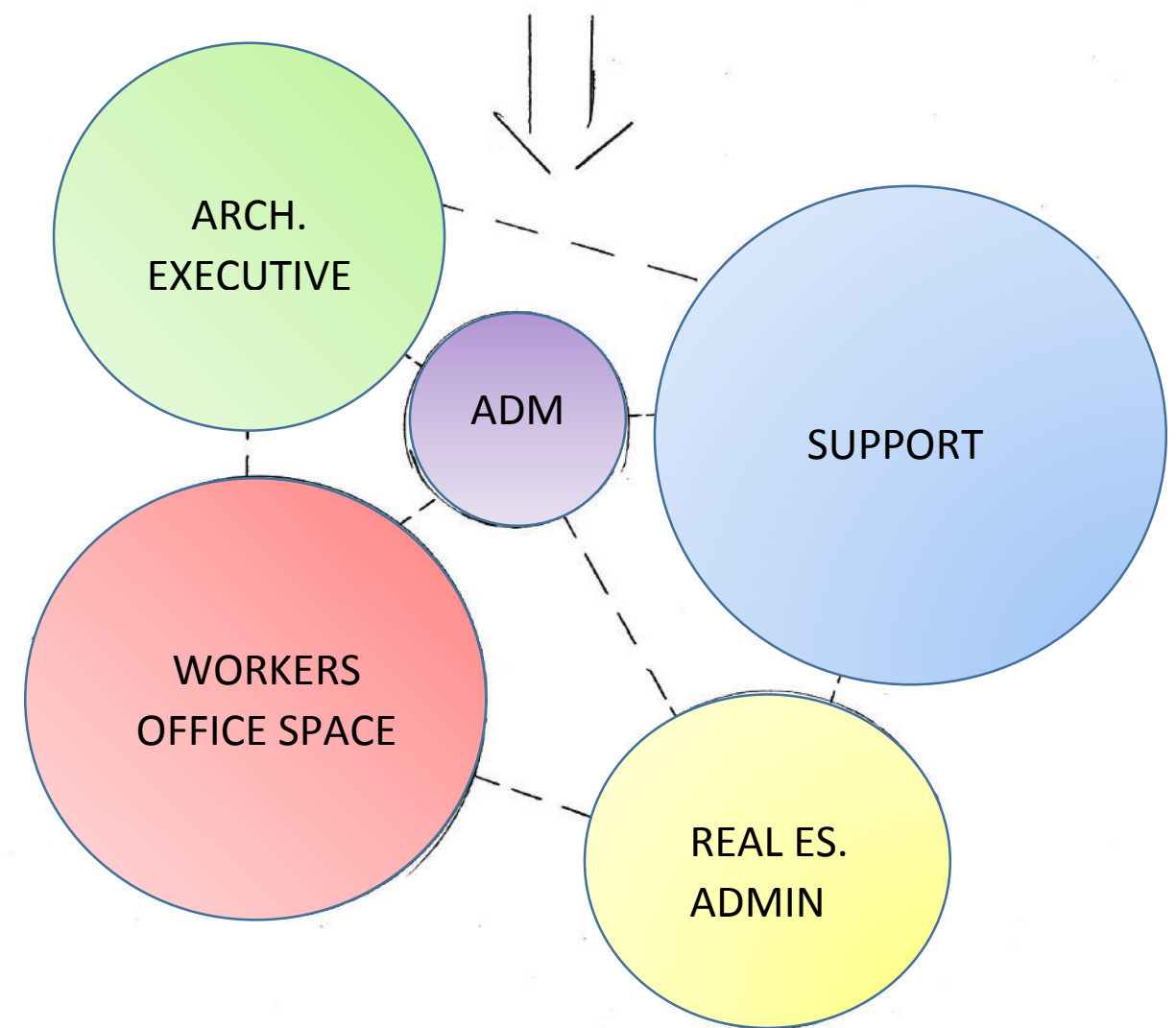
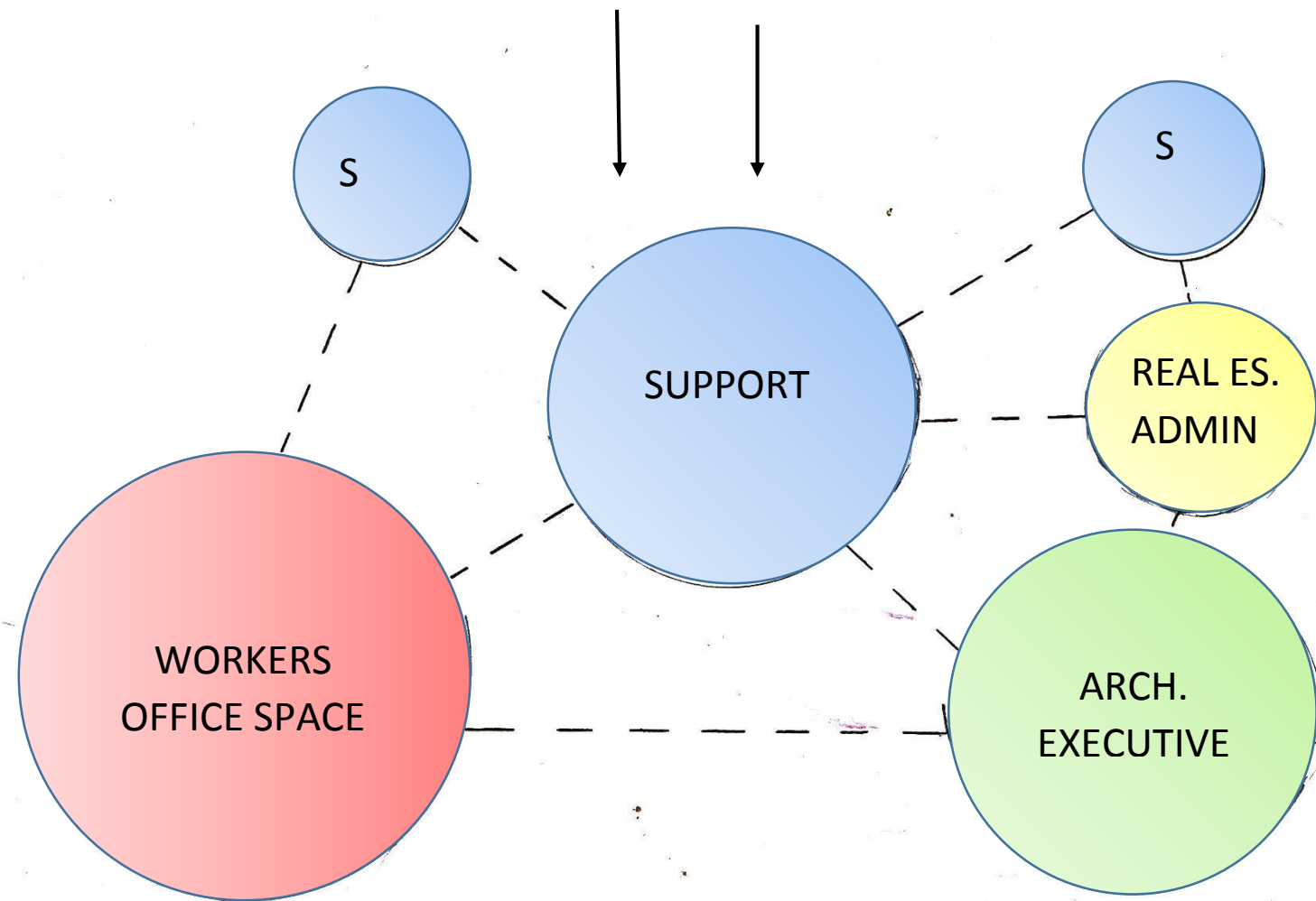
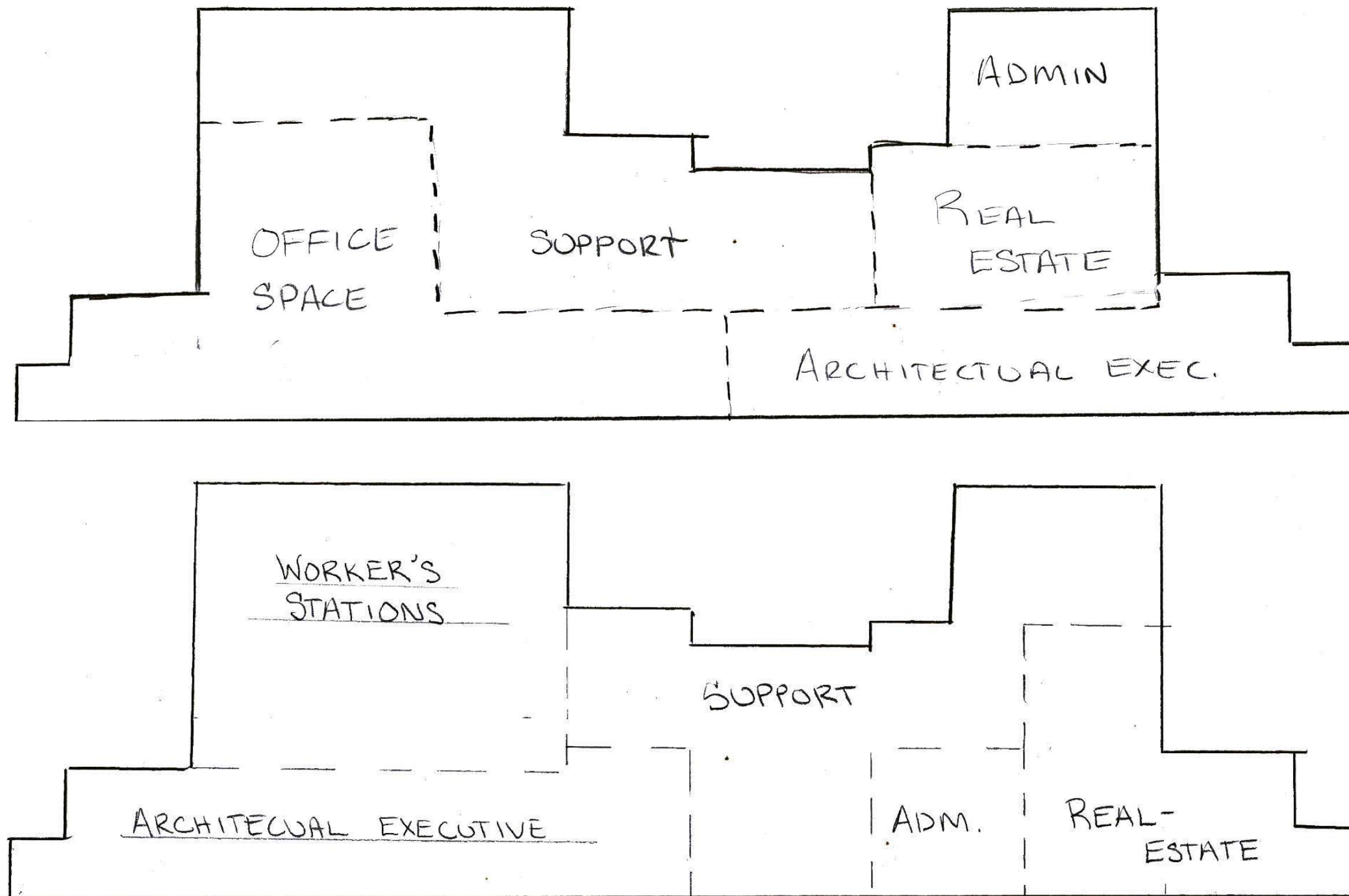


PORTFOLIO 2:
PRELIMINARY SCHEMATIC DESIGN
AMONG THE AGES OF ANTIQUITY
SEMESTER 1: IDSN 3600
DANIELLE NETTER

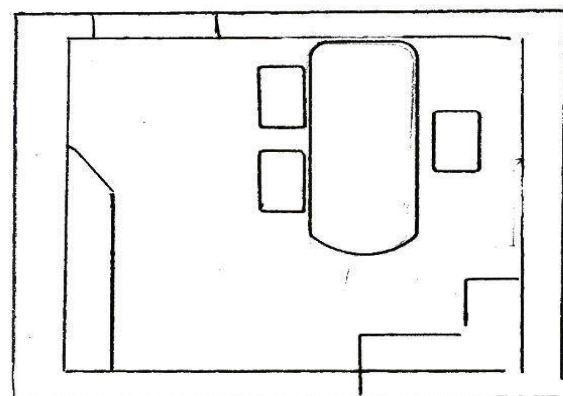
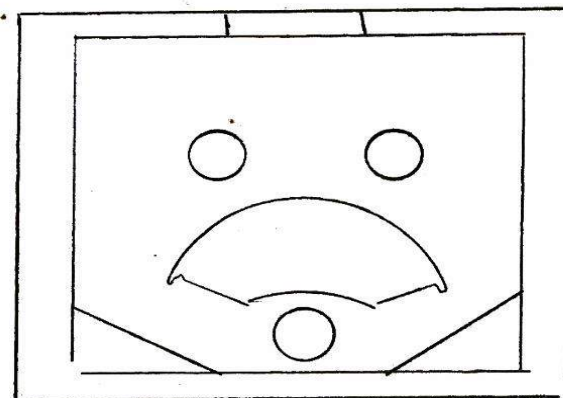
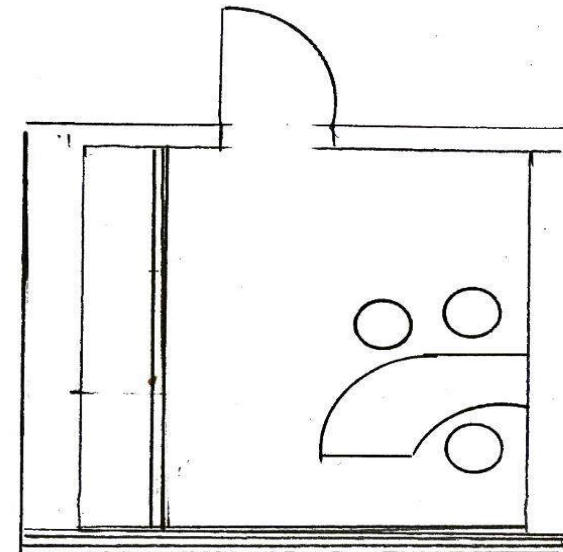
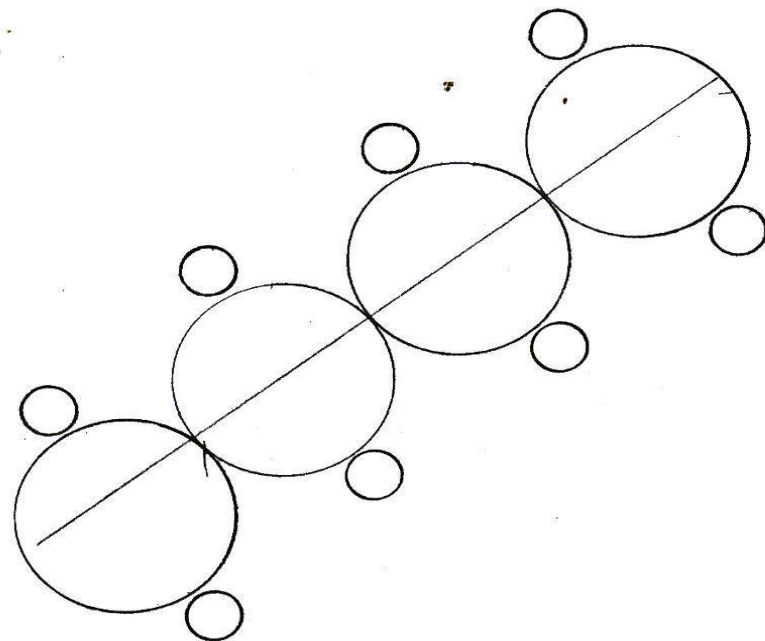
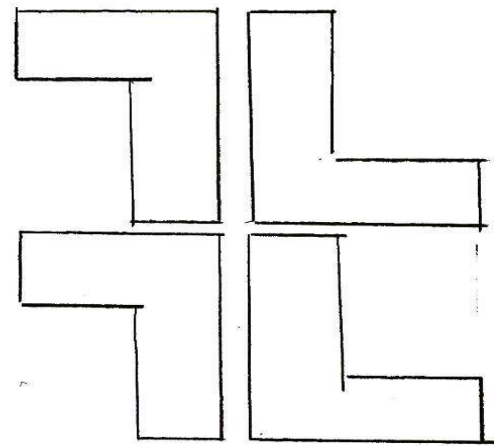
Bubble Diagrams



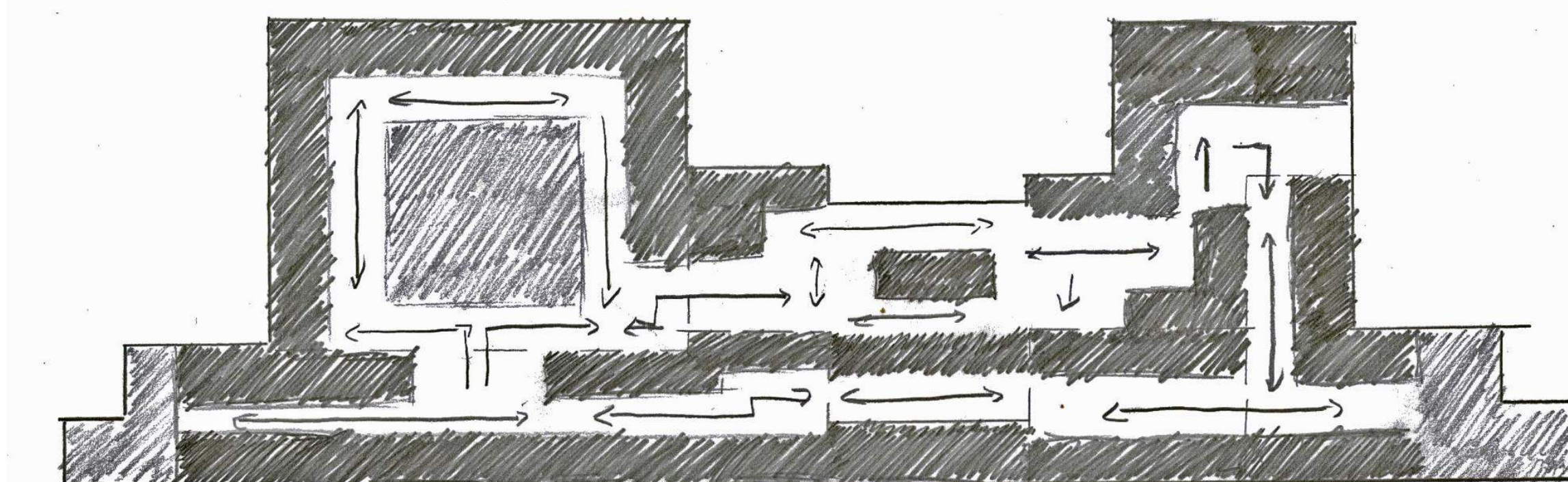
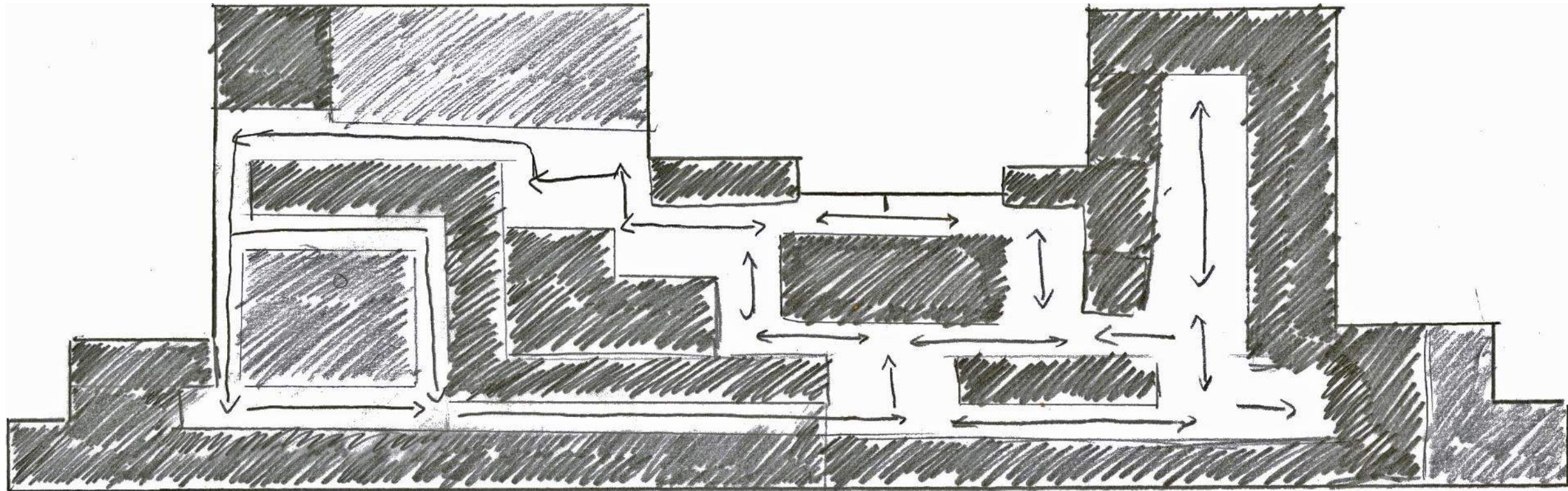
Blocking Diagrams



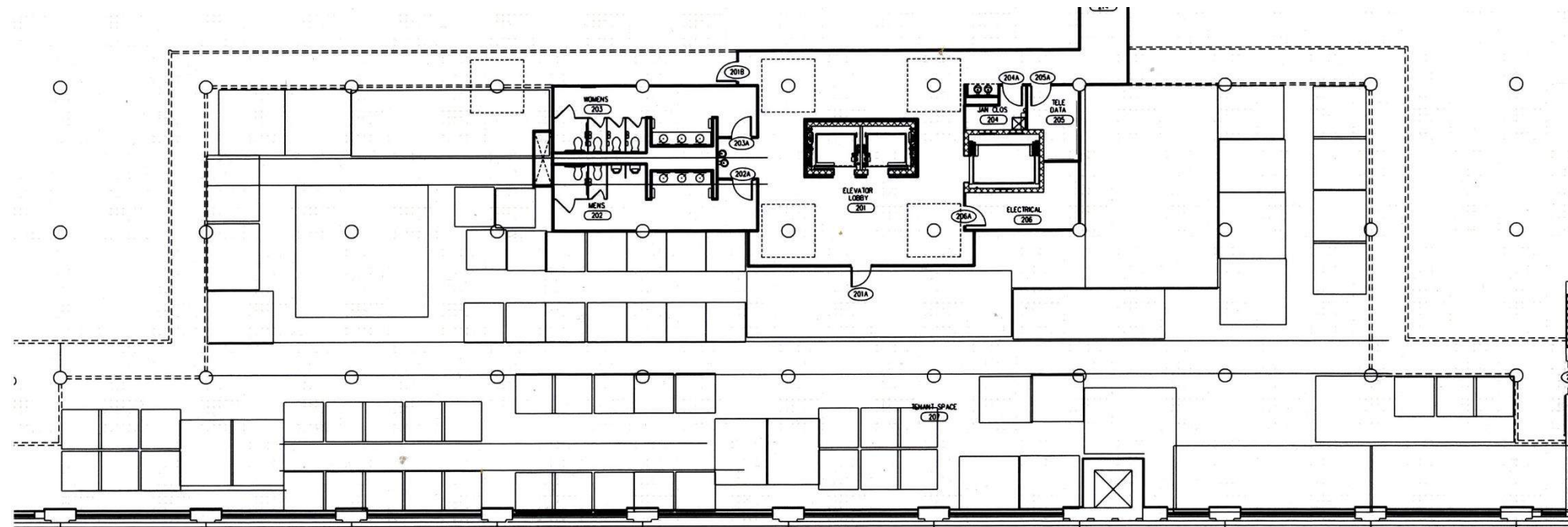
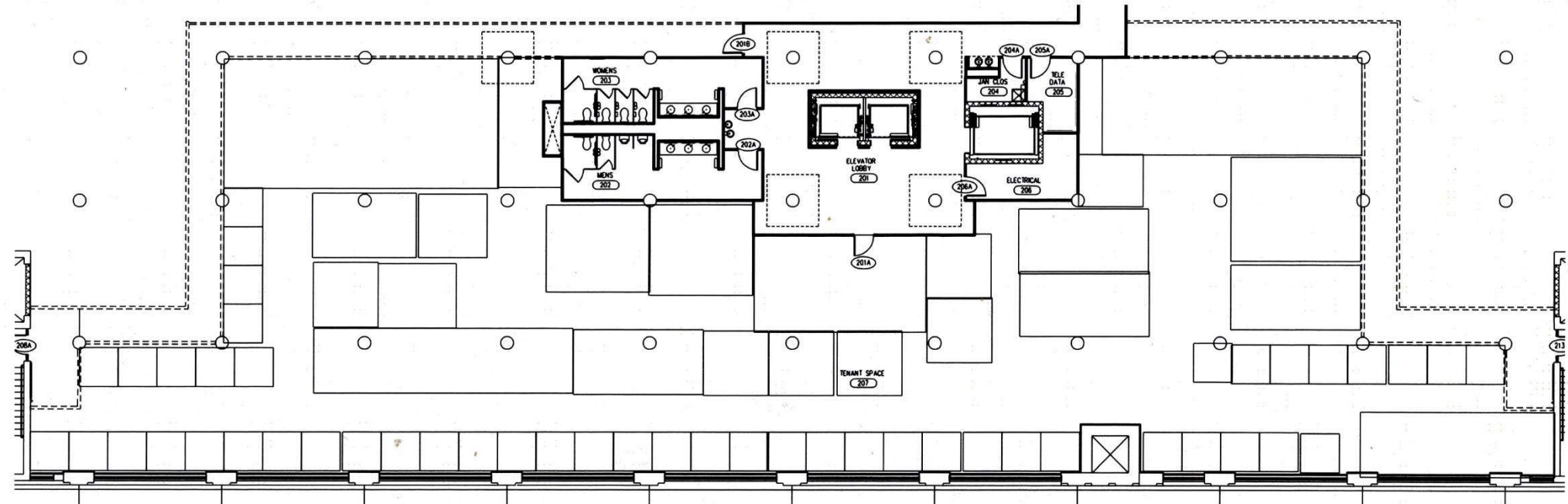
Spatial Standard Drawings



Spatial Concepts Sketches



Spatial Plans



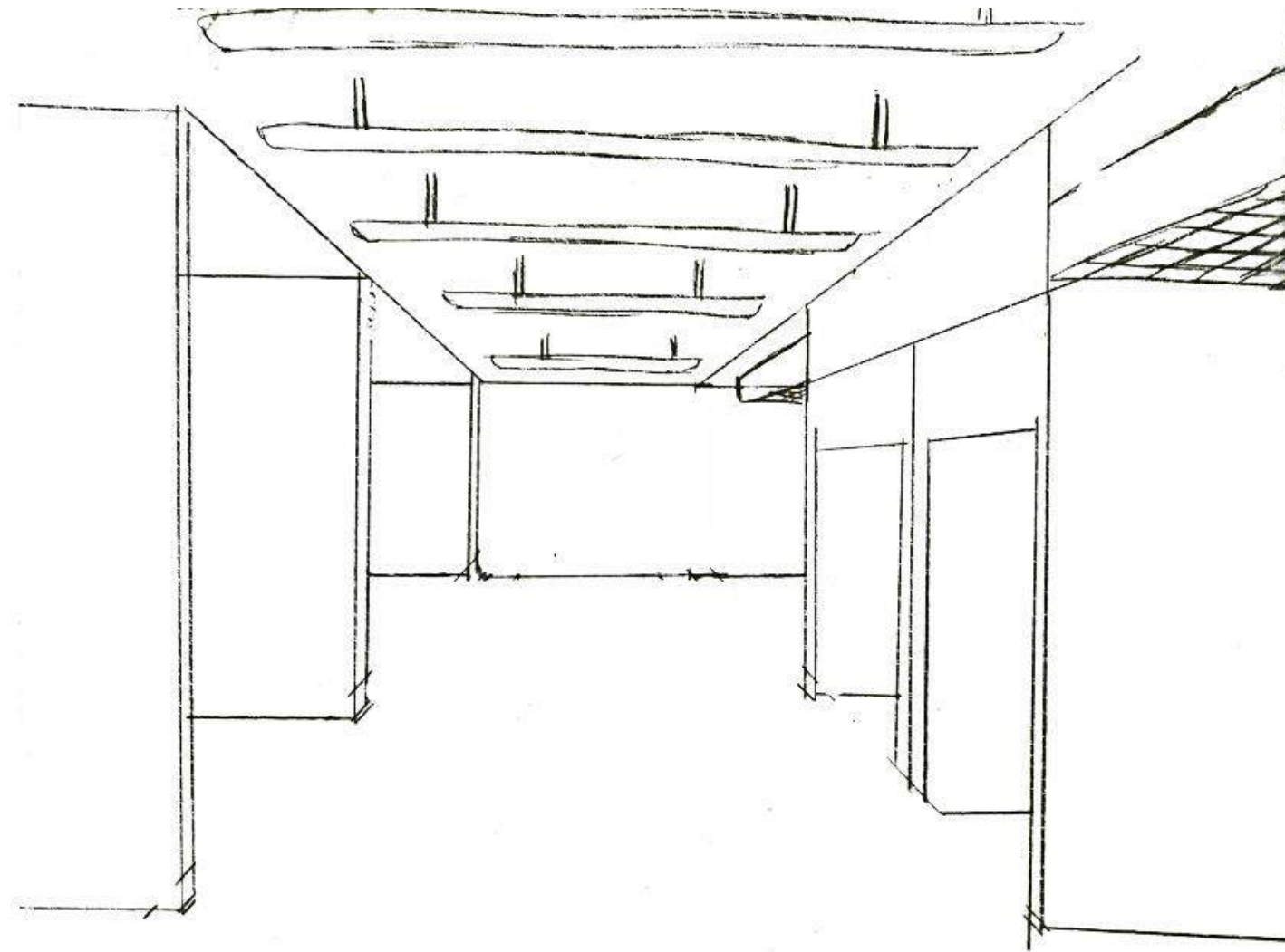
Space Plans



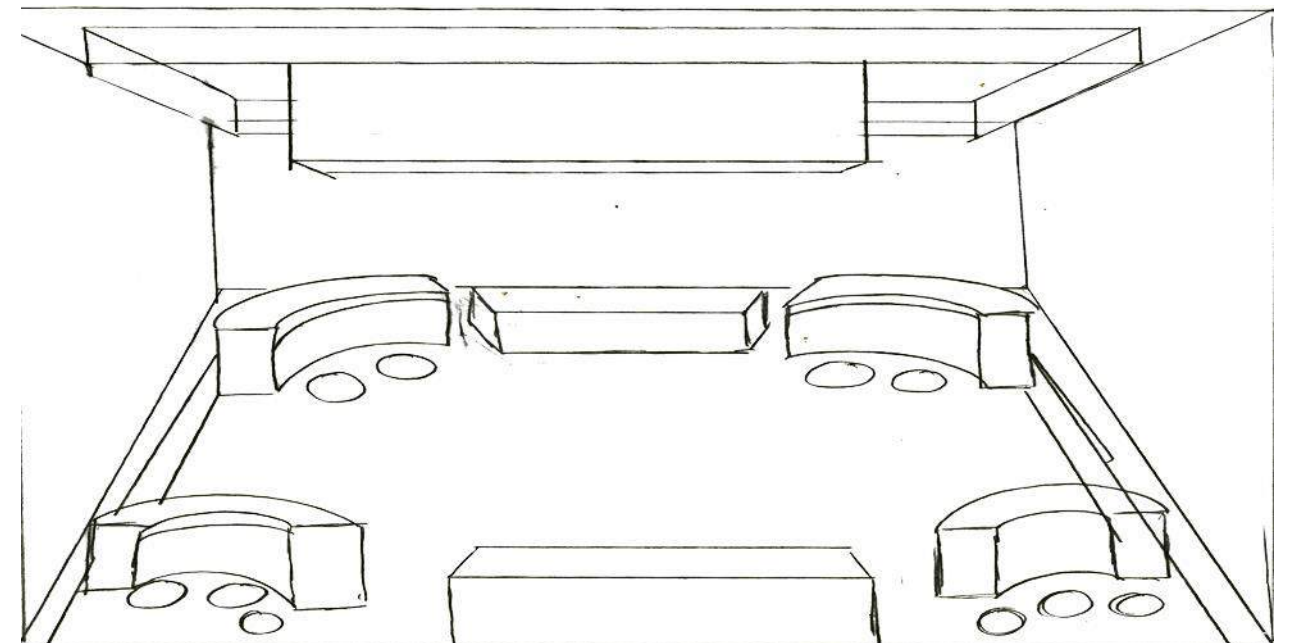
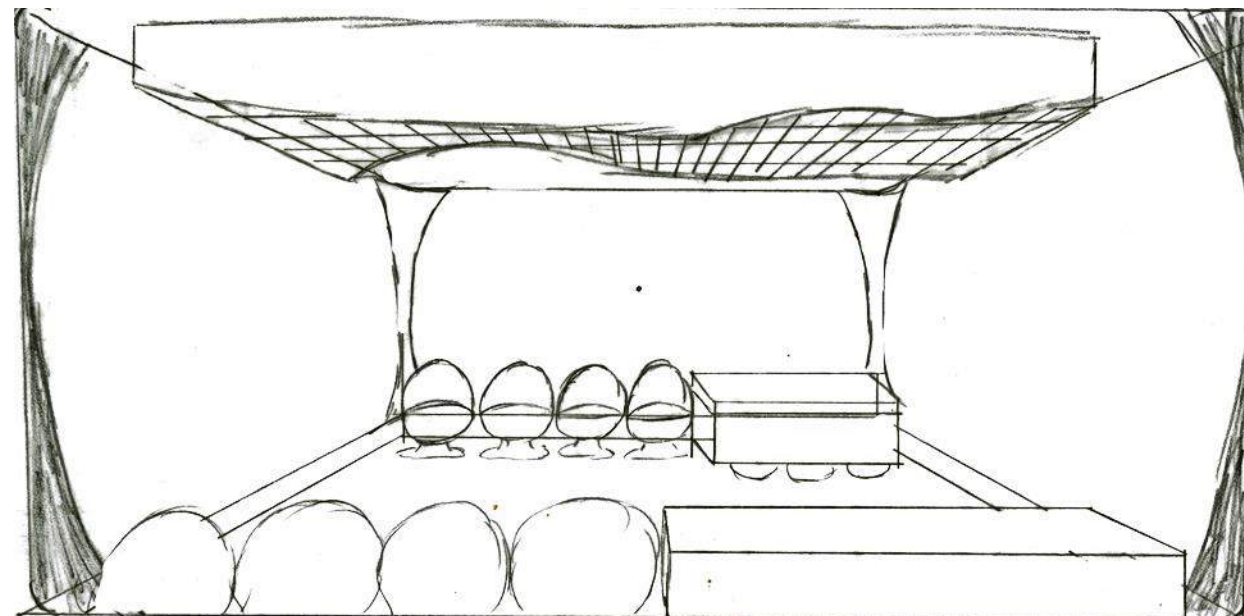
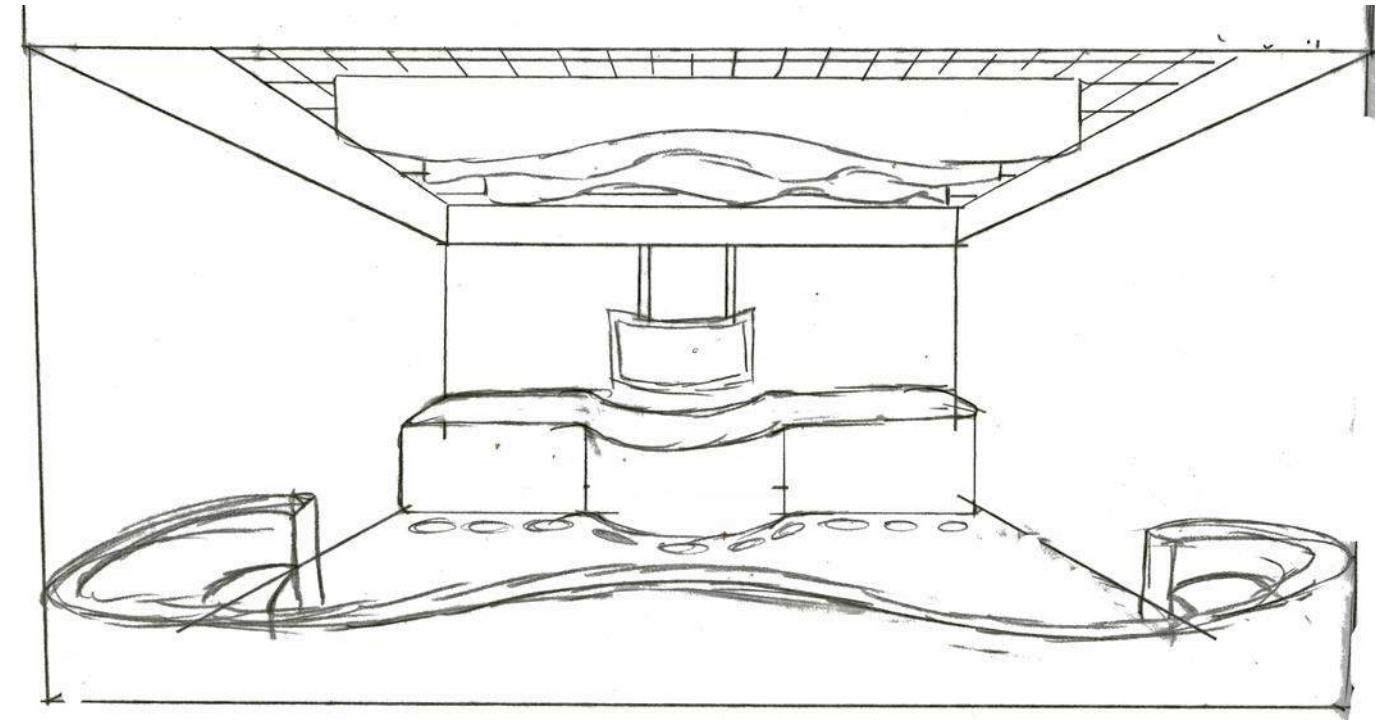
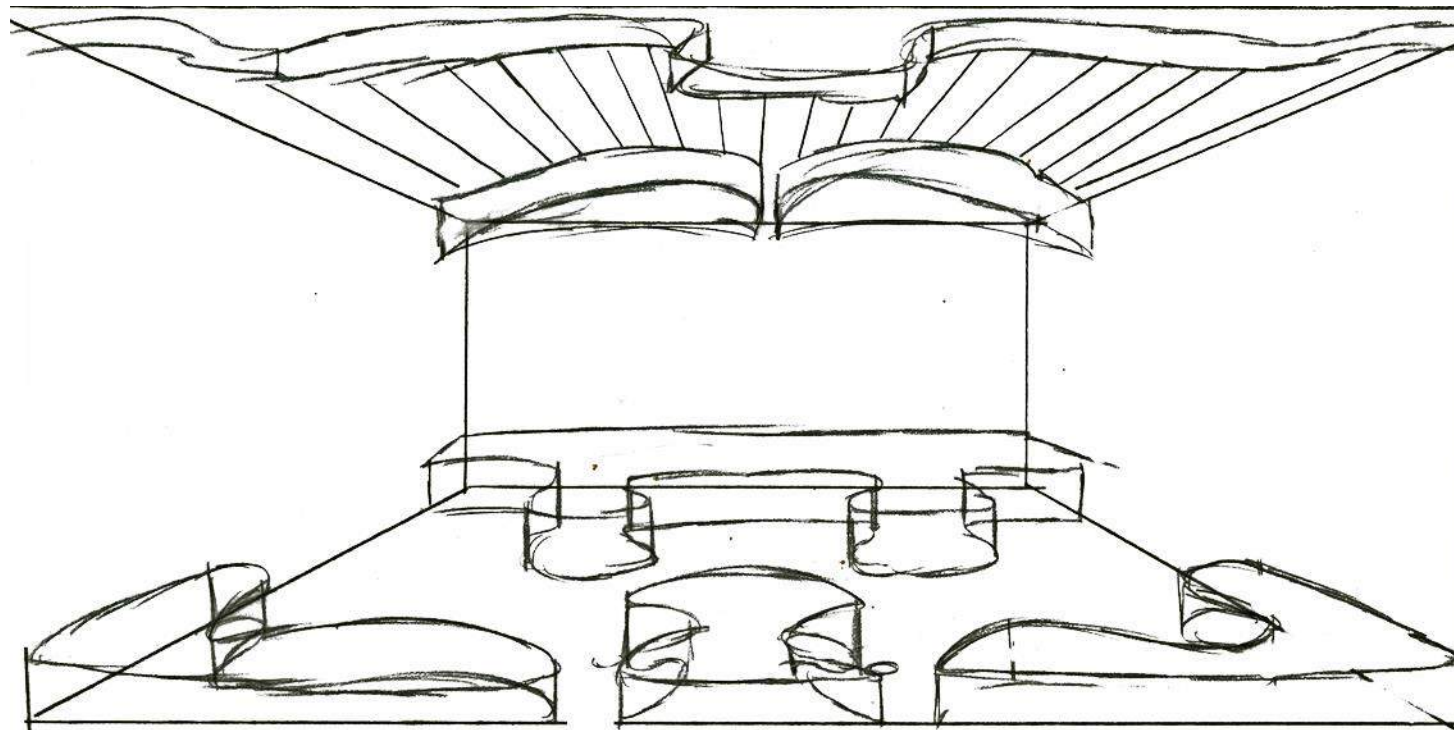
Final Floor Plan



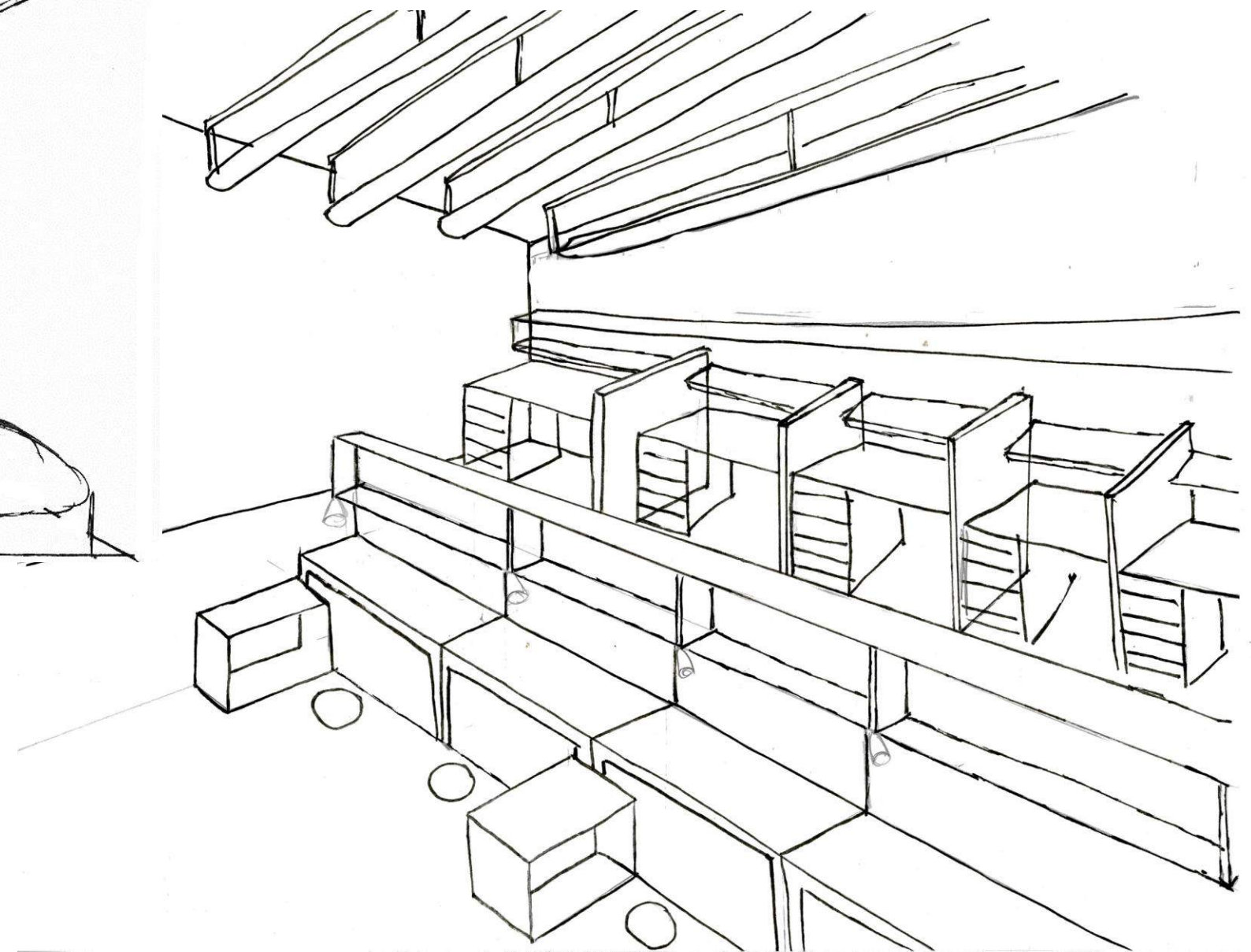
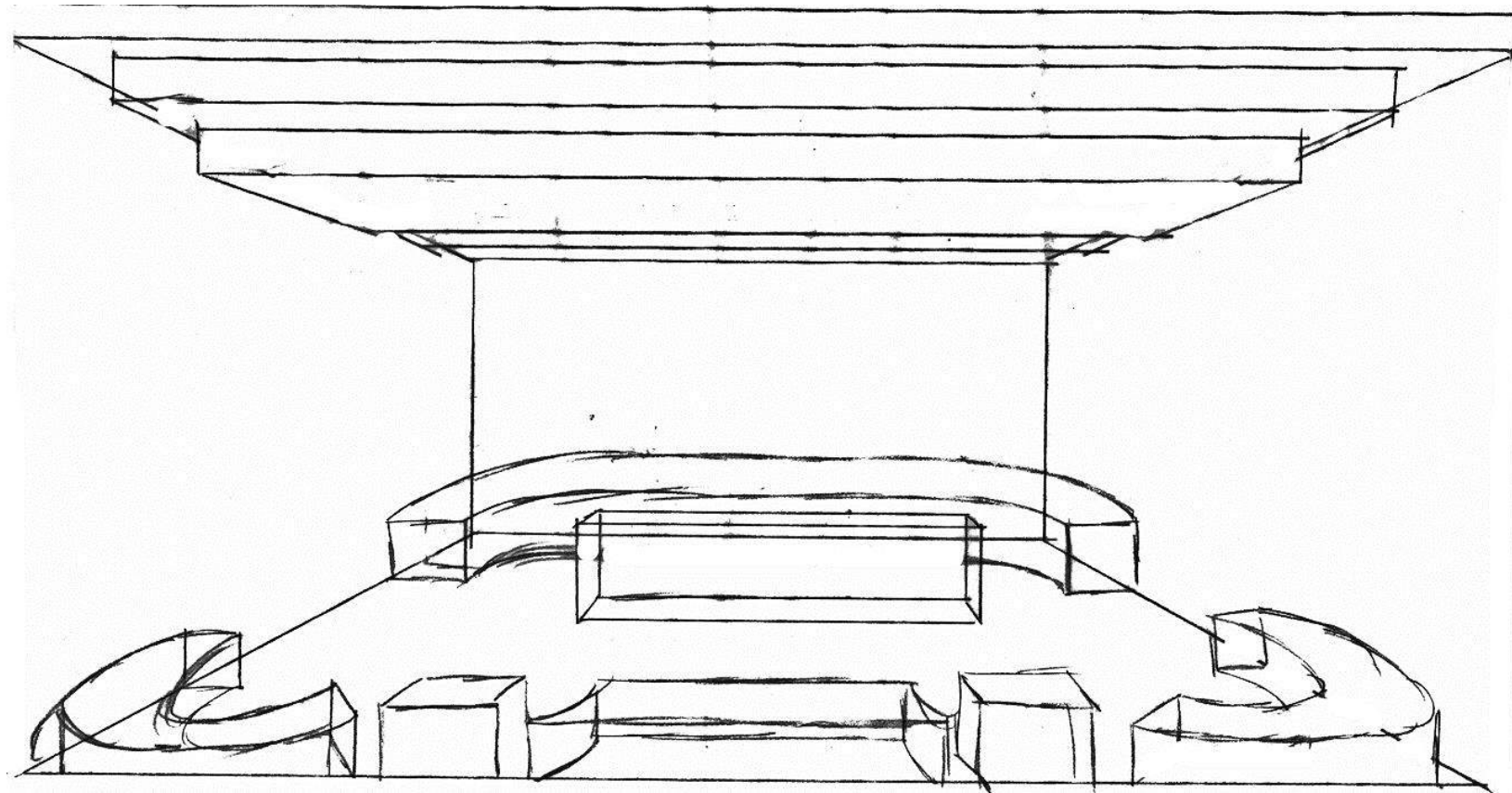
Entry/ Main Corridor Sketches



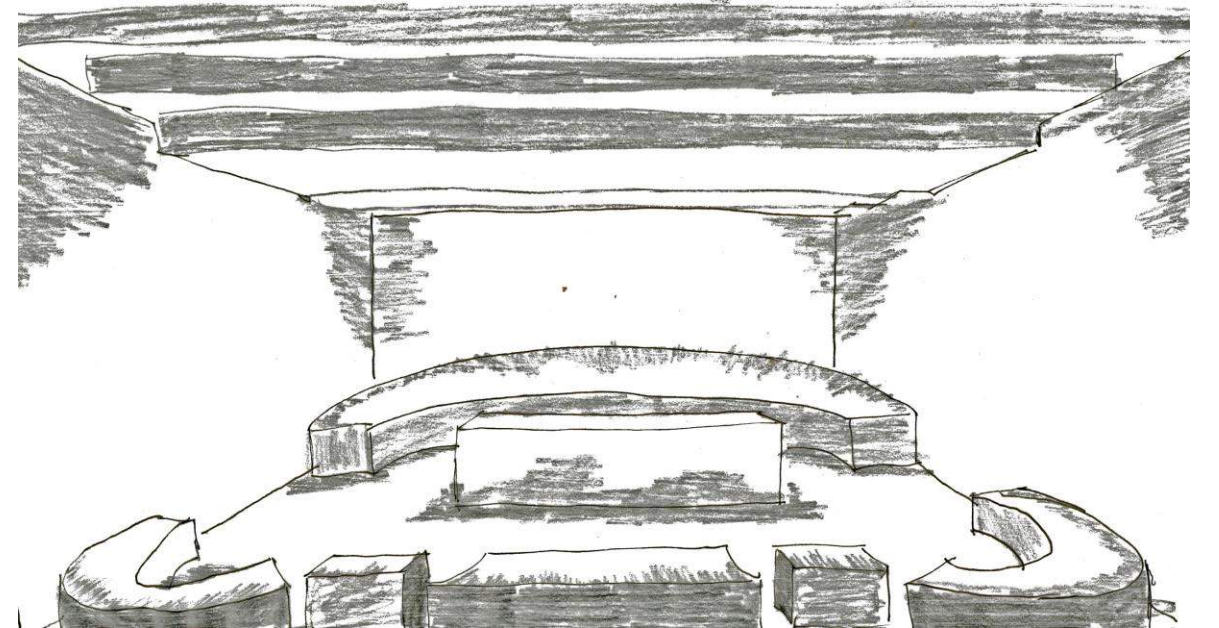
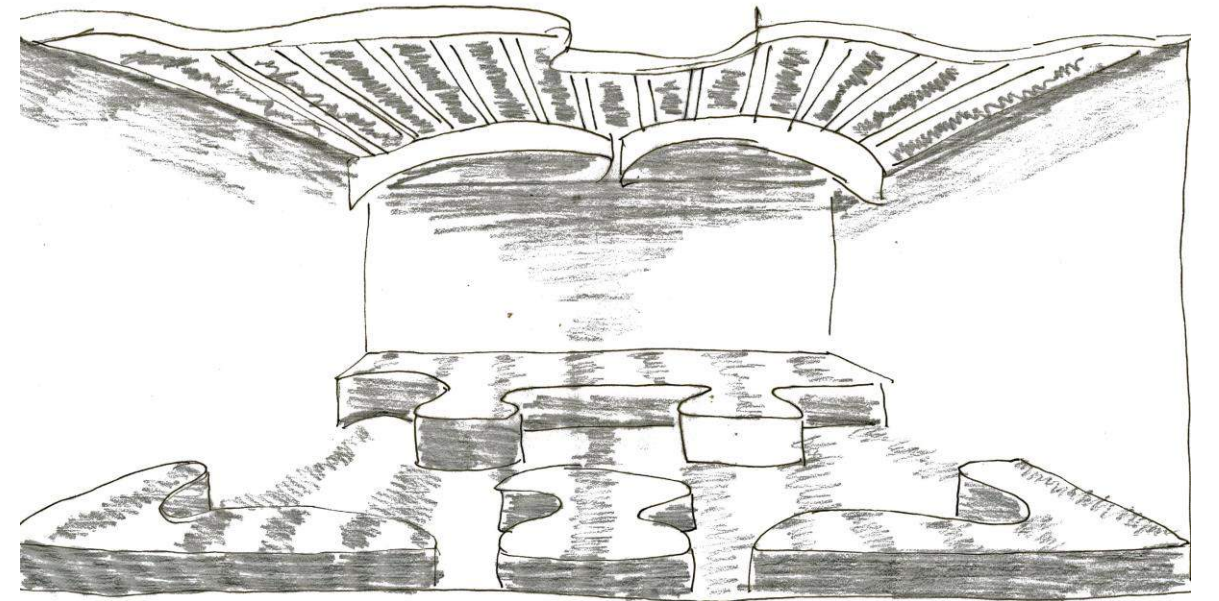
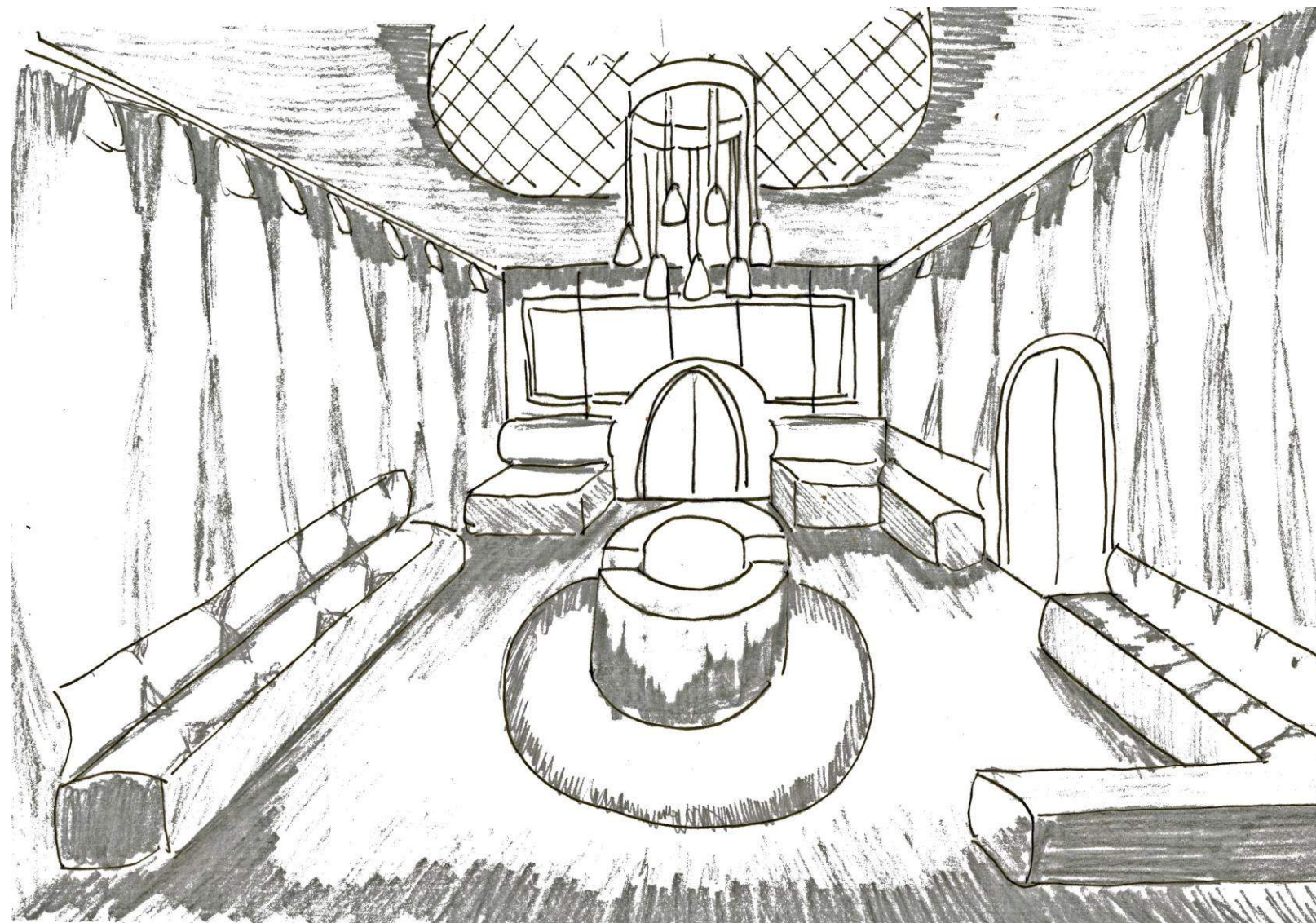
Lounge/ Open Work Area Sketches



Lounge/ Open Work Area Sketches



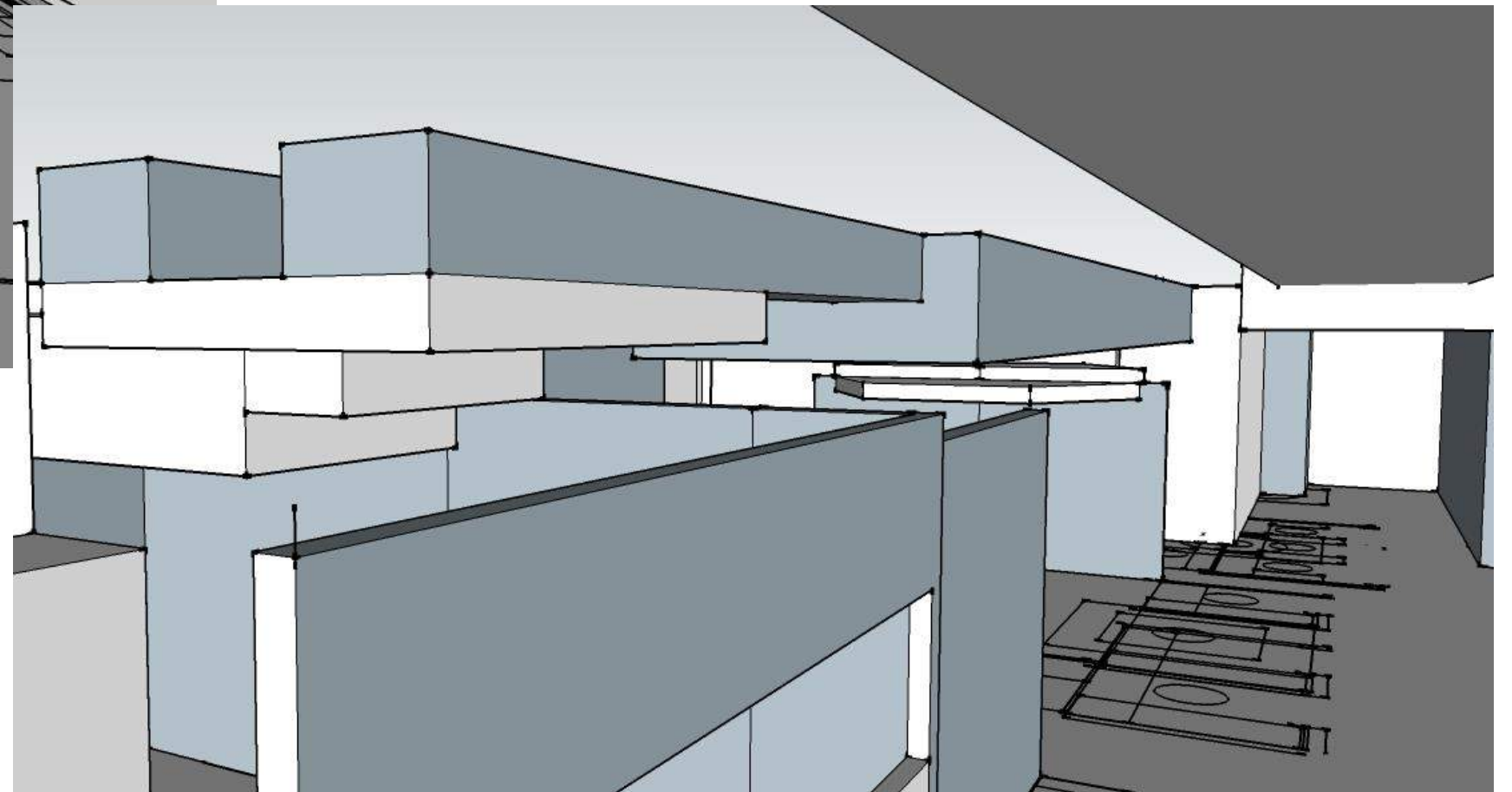
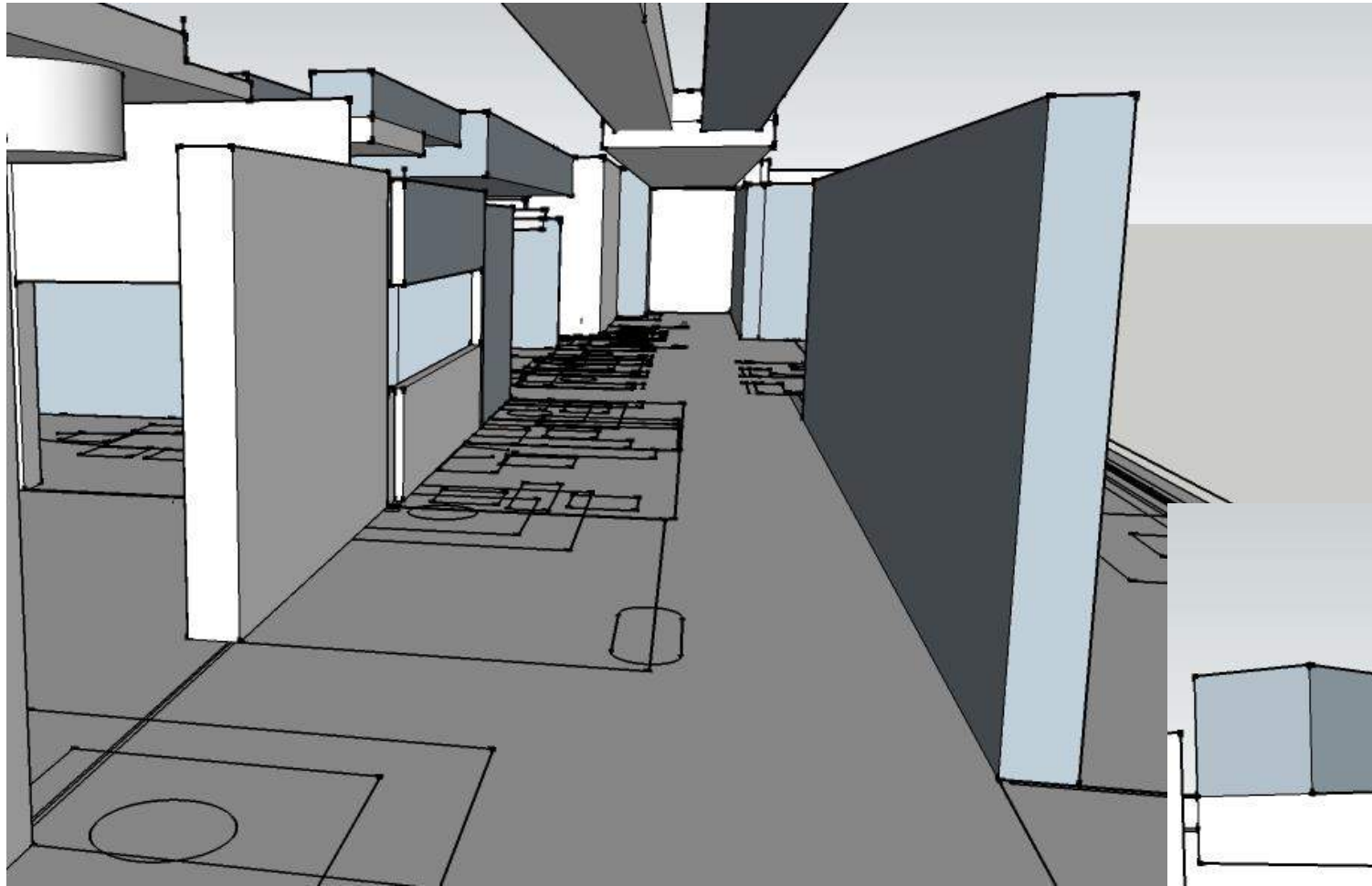
Light Sketches



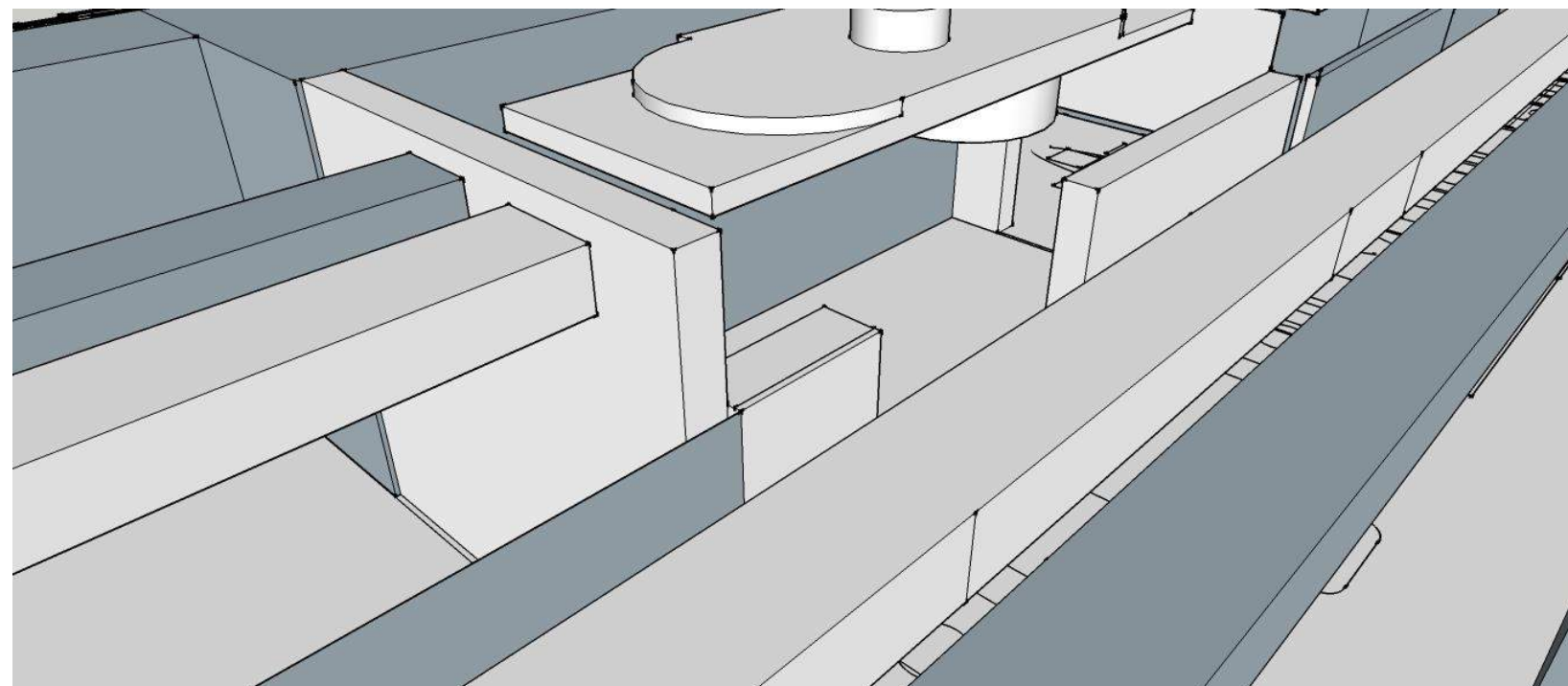
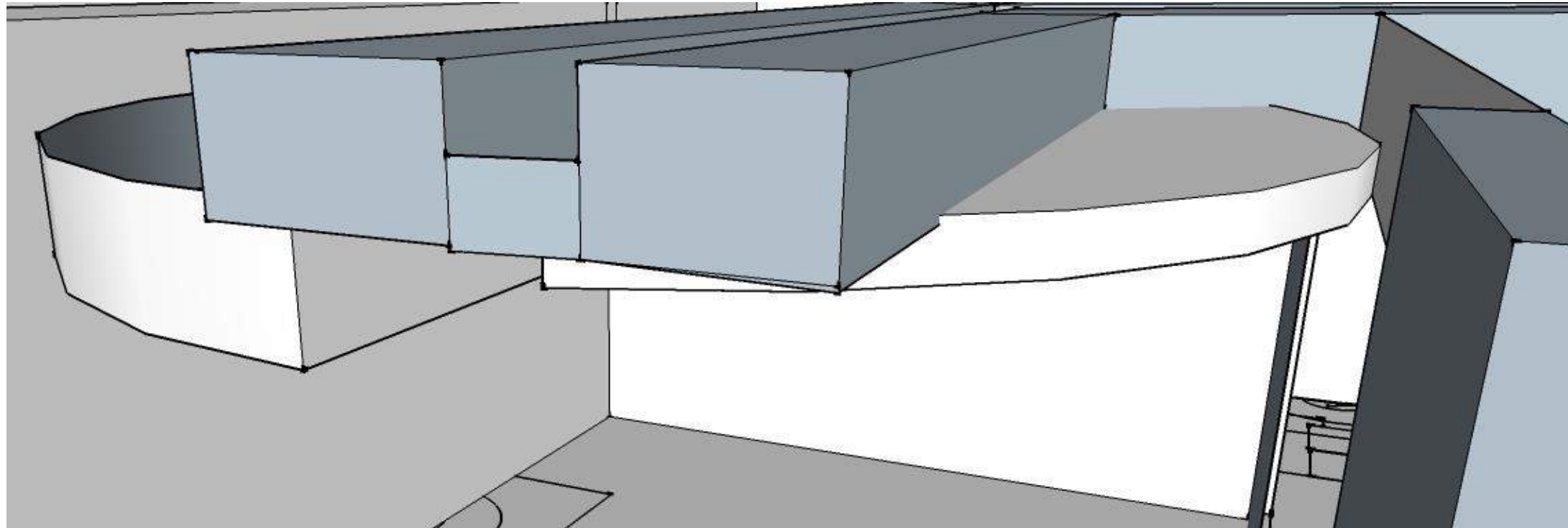
Duck Work



Sketch up Model of Duck Work



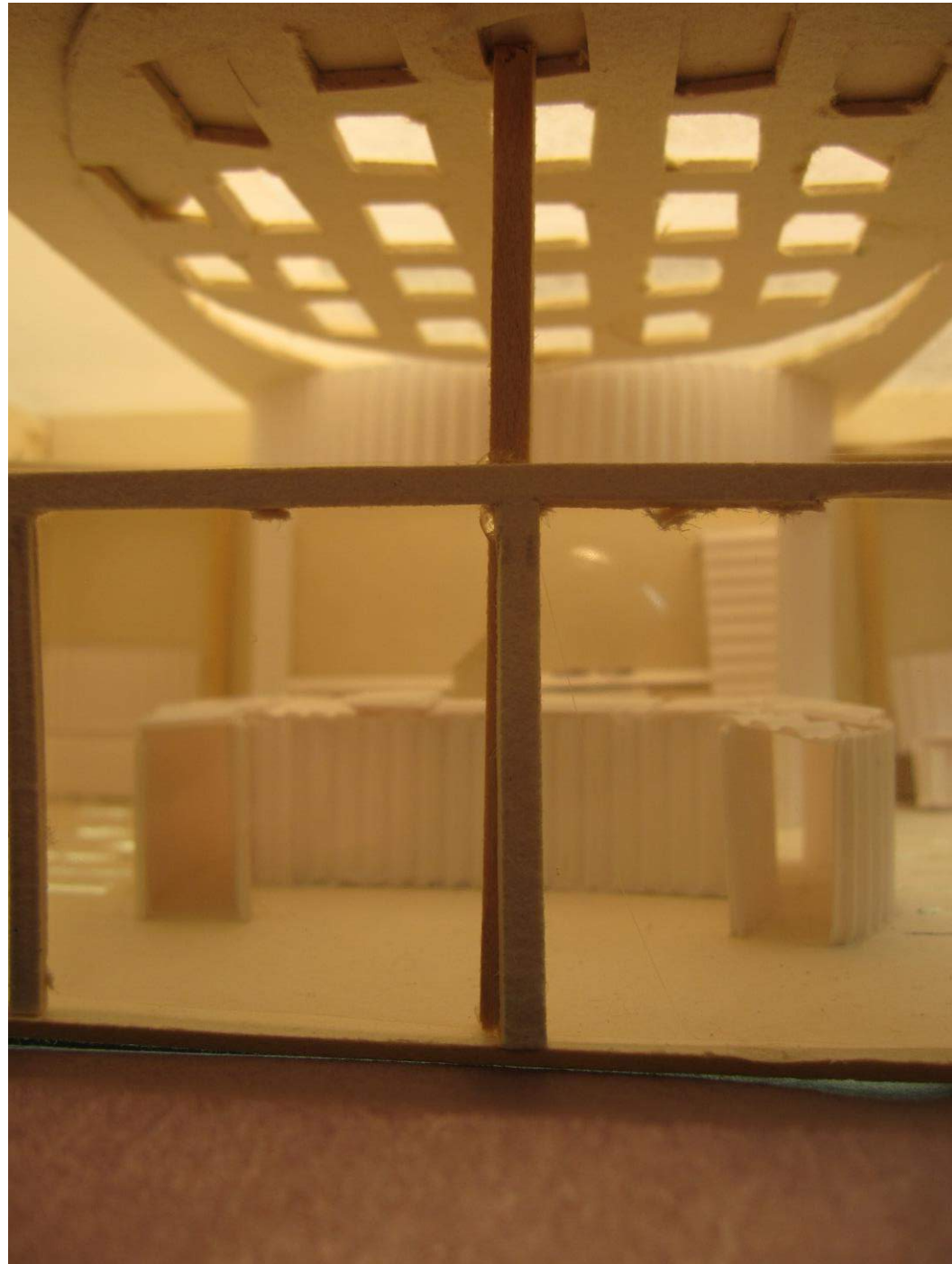
Sketch up Model of Duck Work



Lighting Model



Lighting Model



Sustainable Design Strategies



I would consider my office space to be a sustainable design due to the elements I used when designing this space
such as:

- ❖ Energy efficient lights
- ❖ Recycled materials and recyclable materials inside the space such as furniture, and flooring ect.
 - ❖ Natural and renewable materials such as certified wood
 - ❖ Locally available materials to reduce transportation hassle and cost
- ❖ Using durable products that way money, time, and energy can be saved
 - ❖ Low VOC assembly when talking about indoor air quality
- ❖ Adaptive Reuse due to the fact that I am reusing an old building