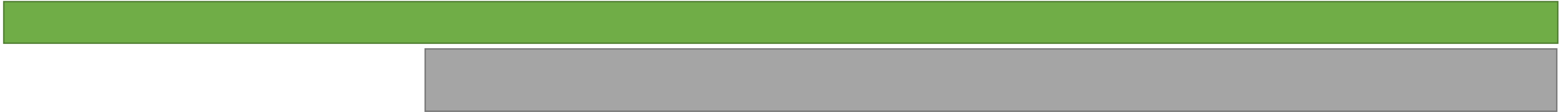
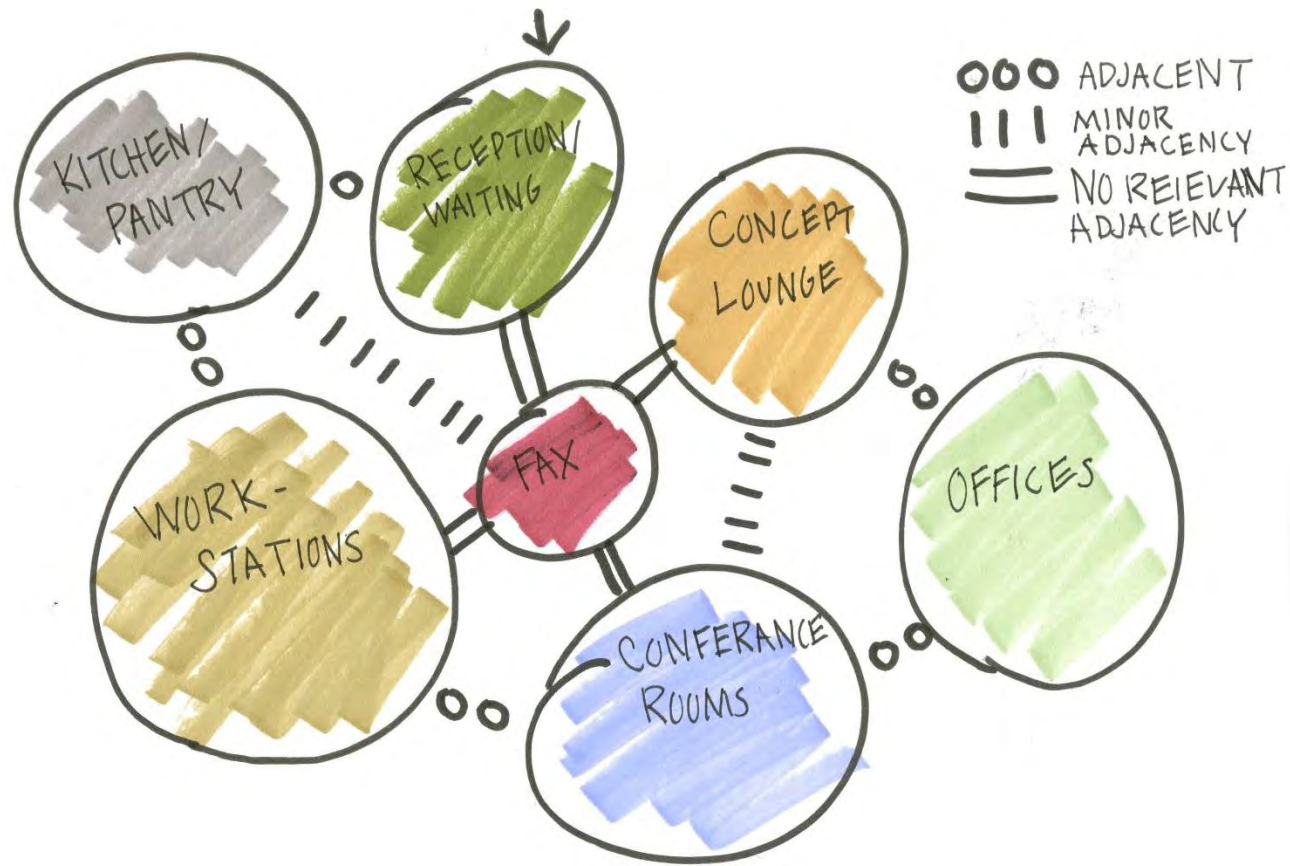


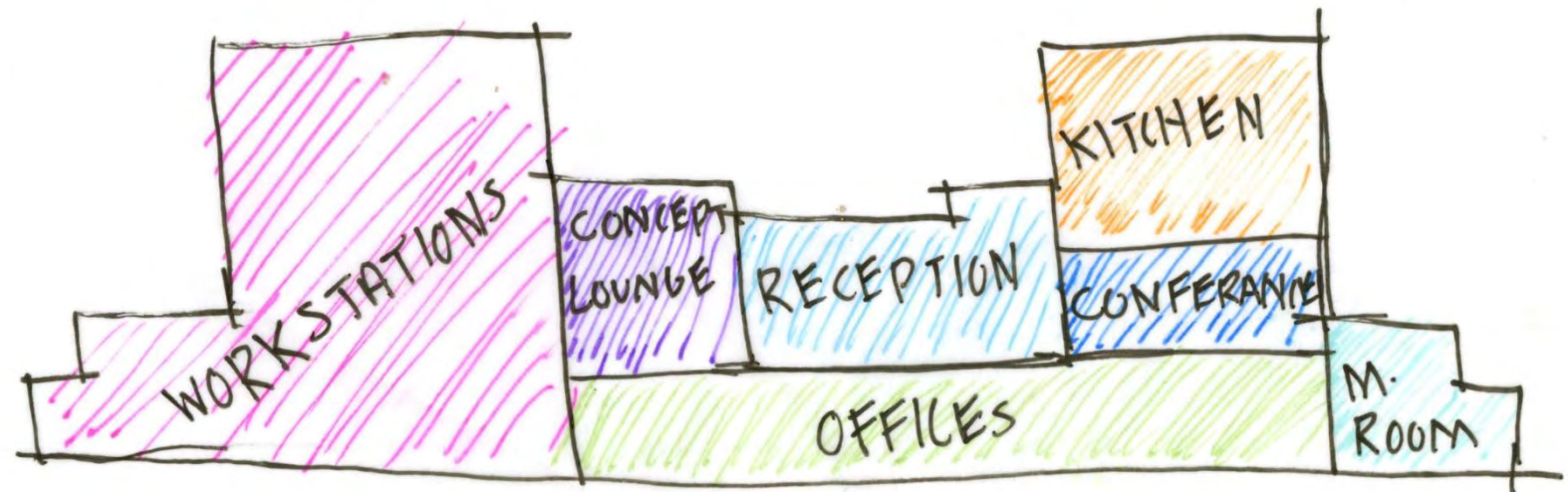
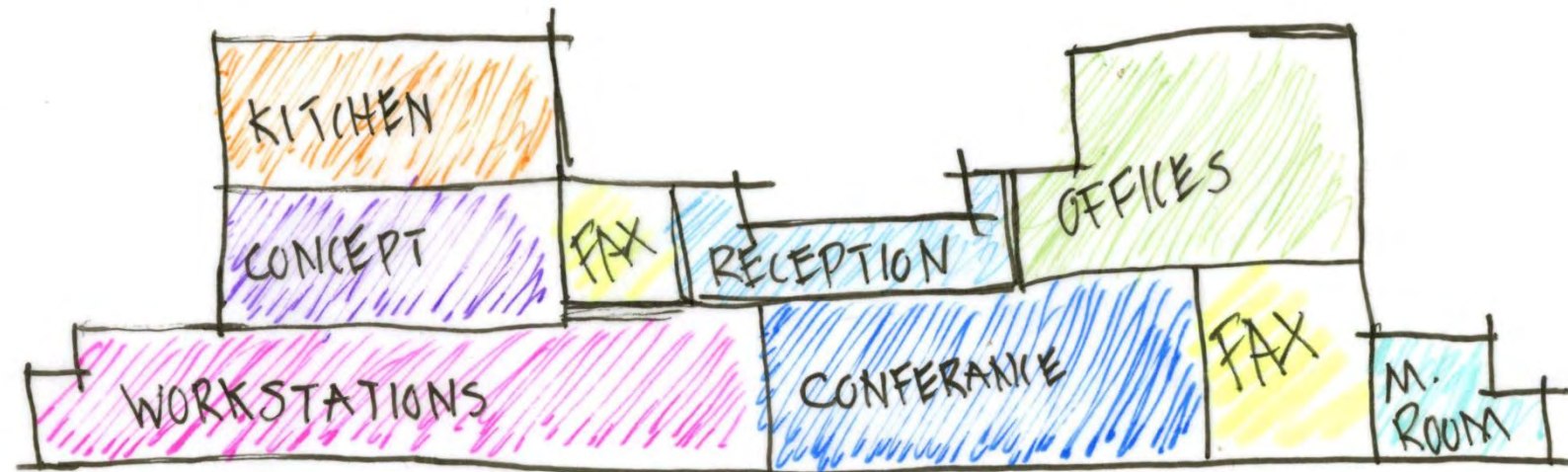
# Portfolio Two



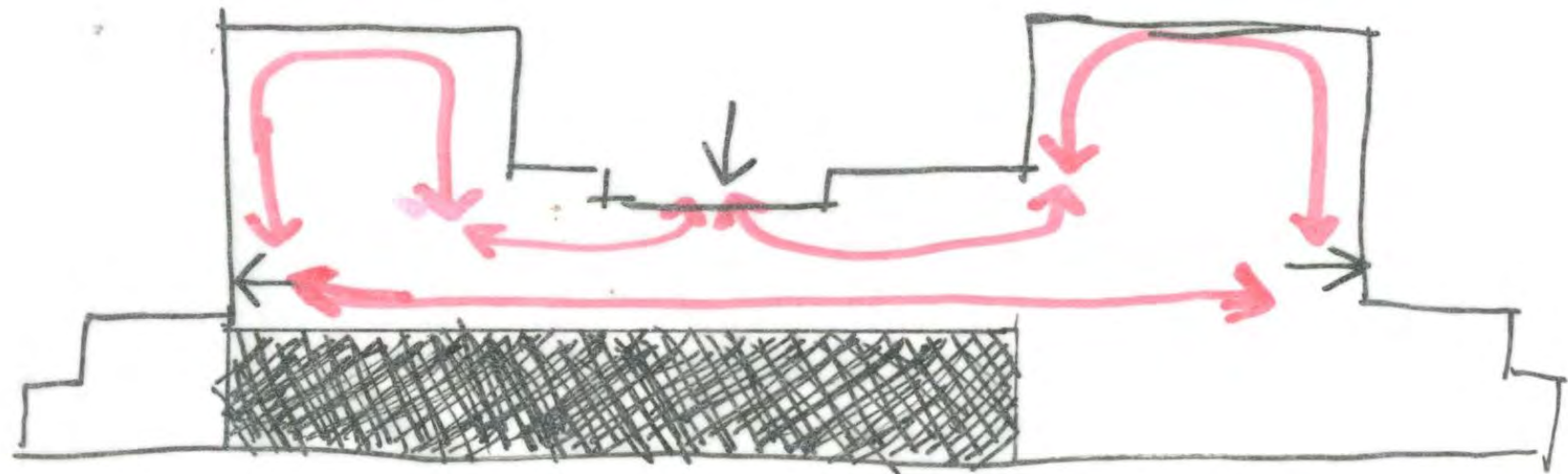
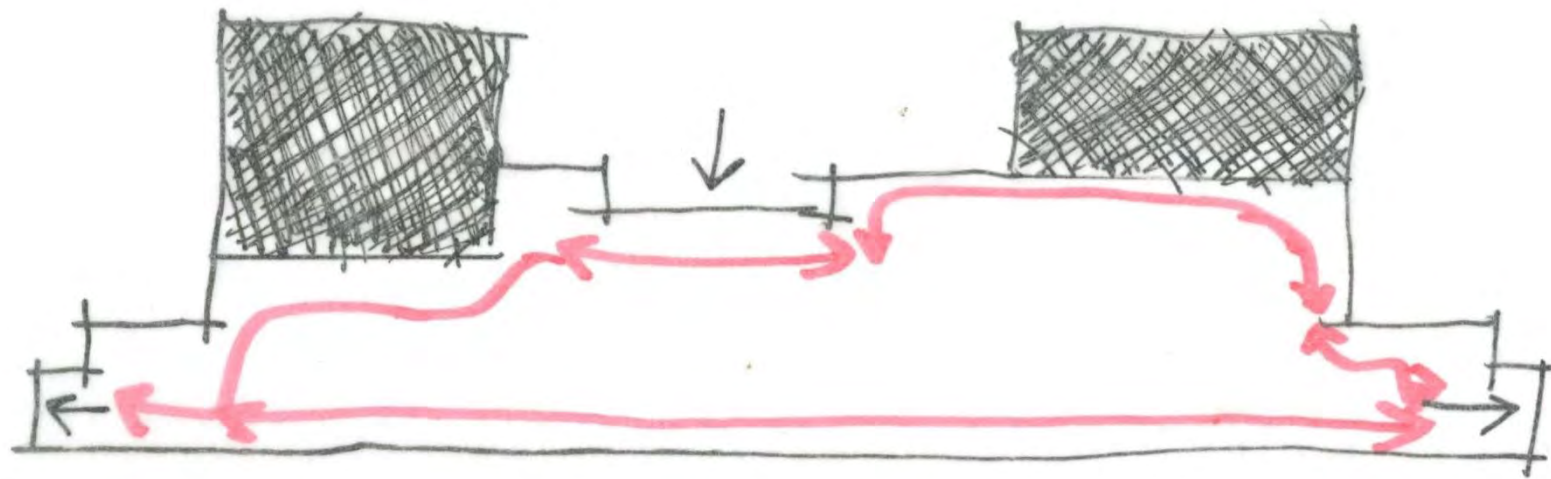
# SCHEMATICS - BUBBLE DIAGRAMS



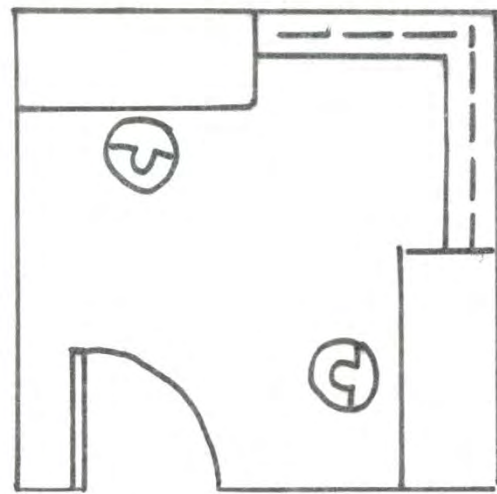
# SCHEMATICS - BLOCK DIAGRAMS



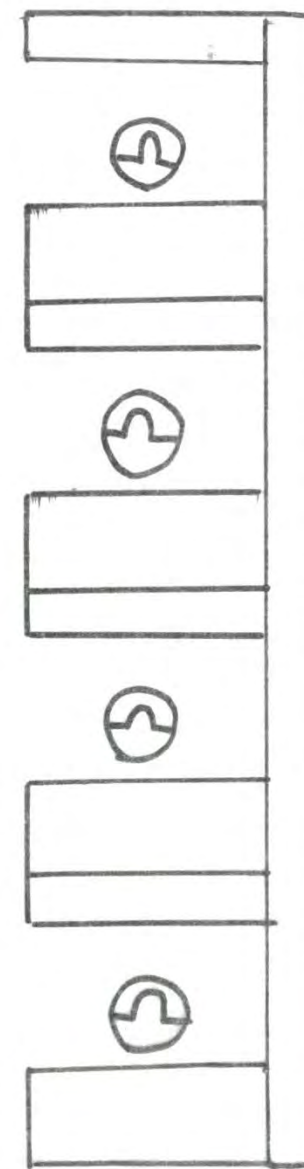
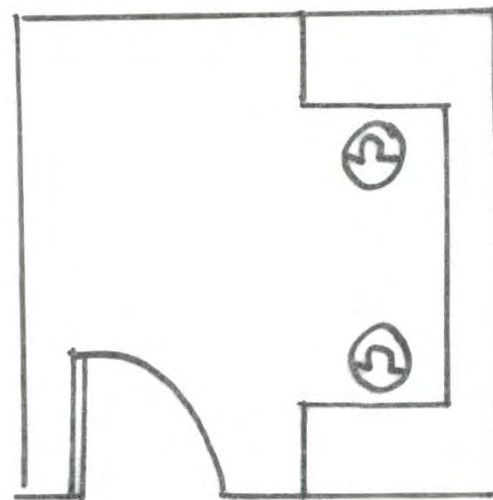
# SCHEMATICS - SPATIAL CONCEPT SKETCHES



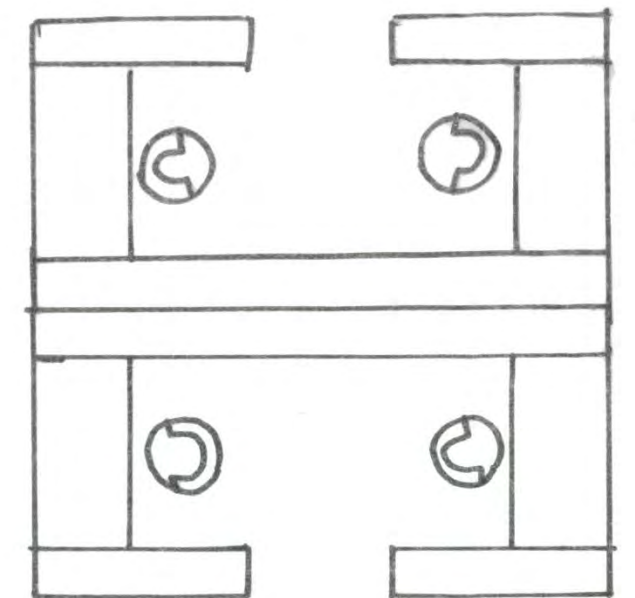
# SPACE STANDARD SKETCHES



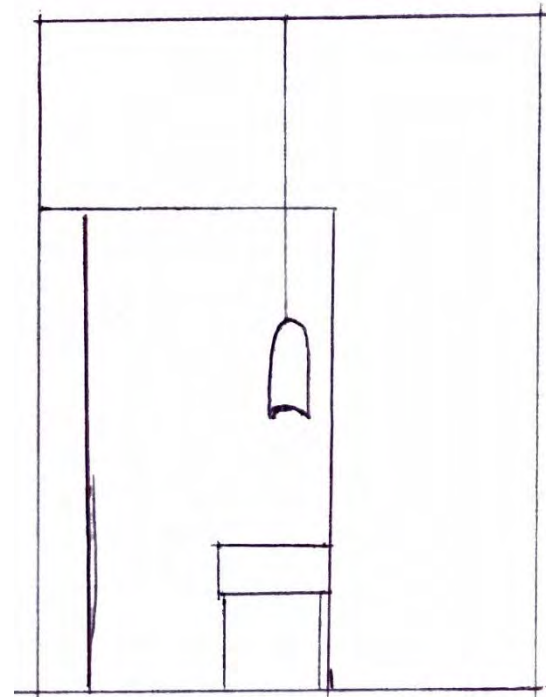
OFFICES



WORK STATIONS

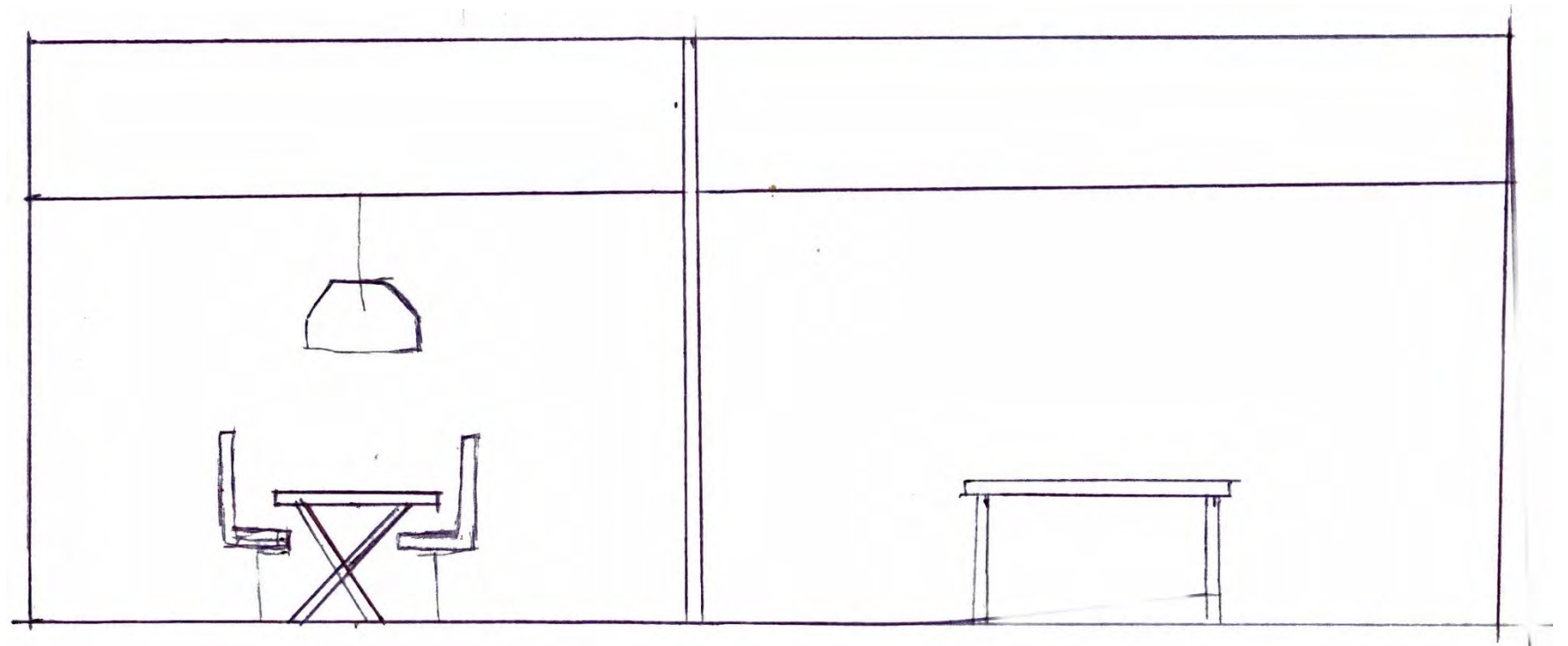


# SECTION SKETCHES

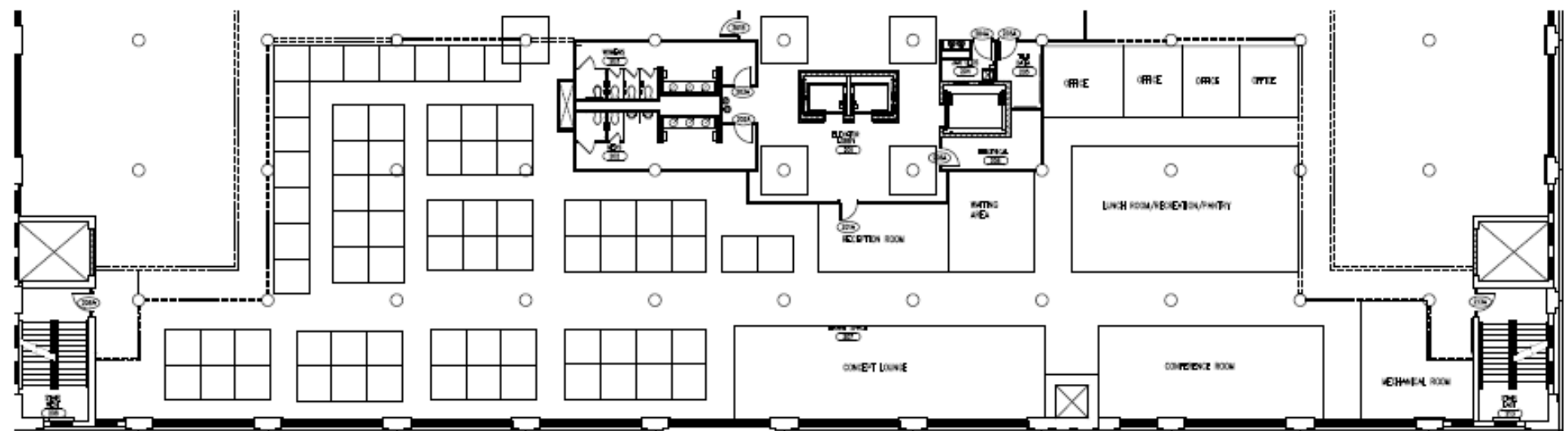
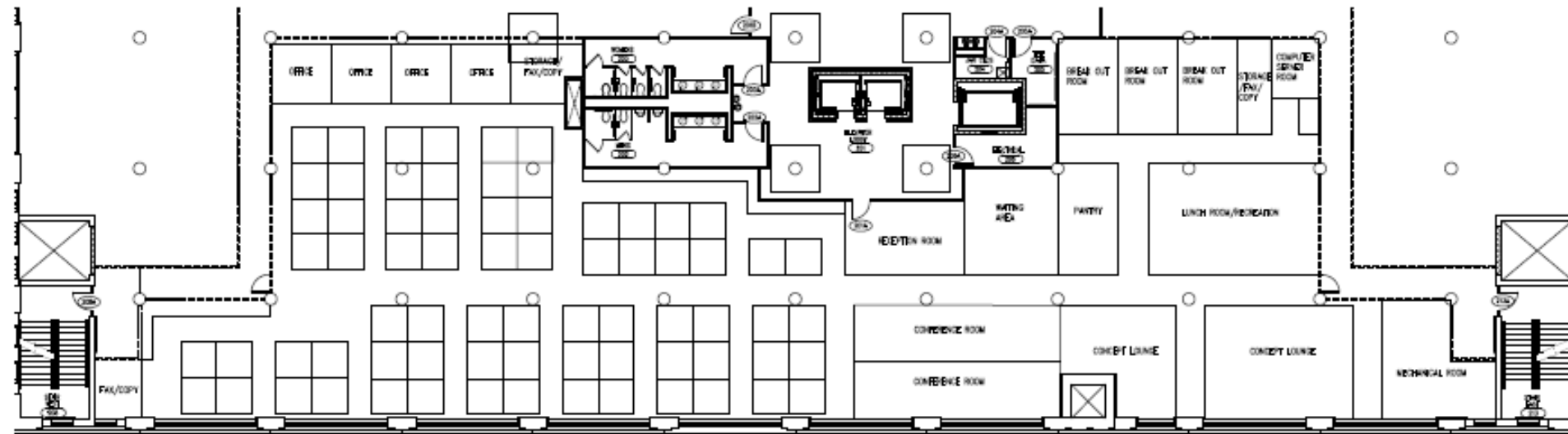


RECEPTION/ ENTRY

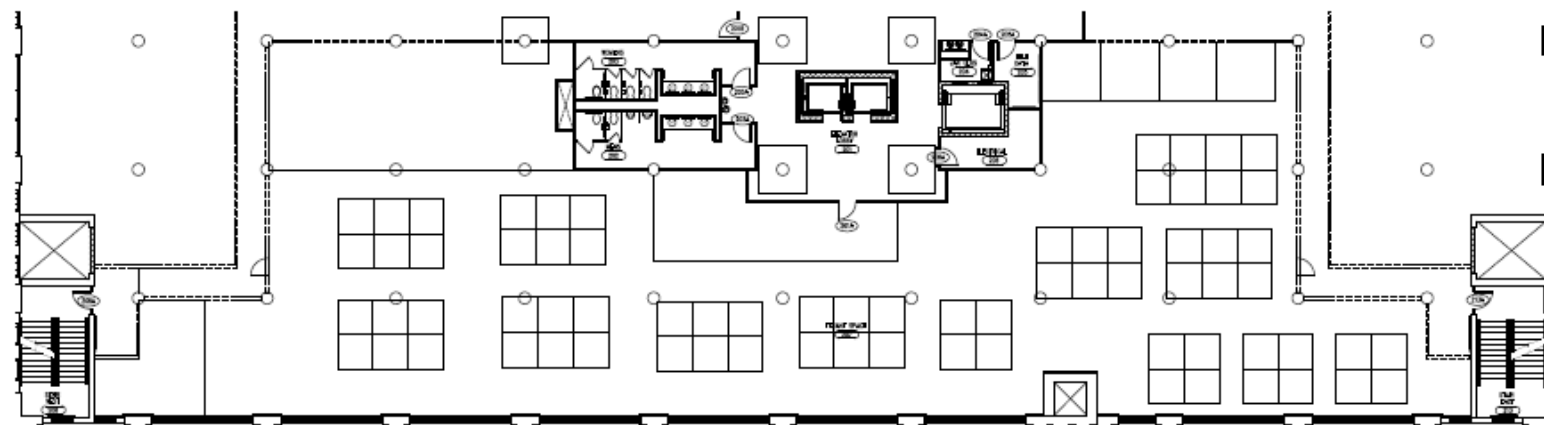
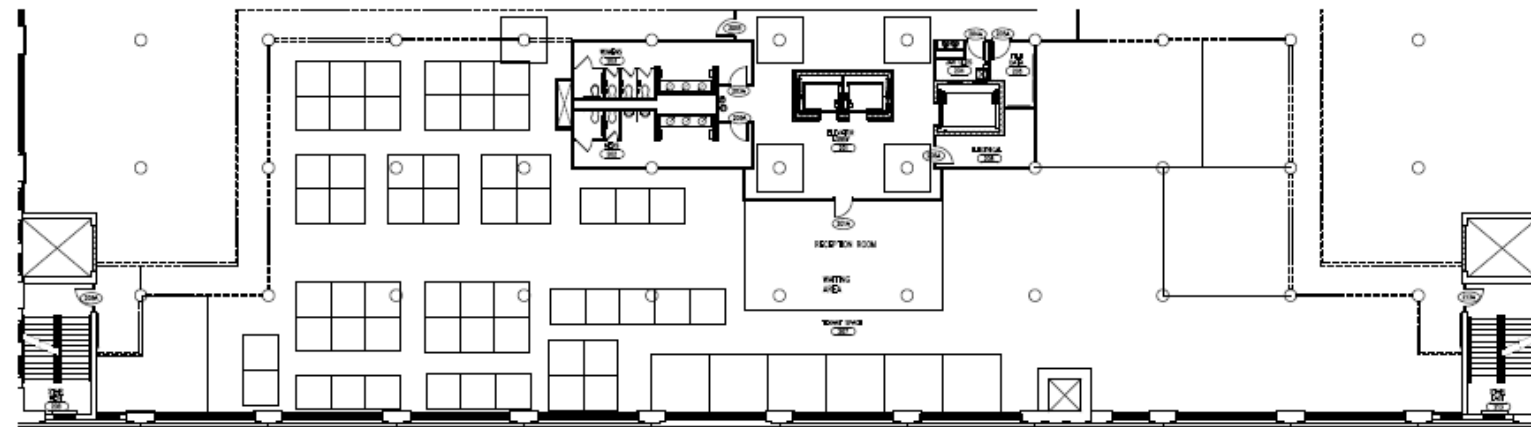
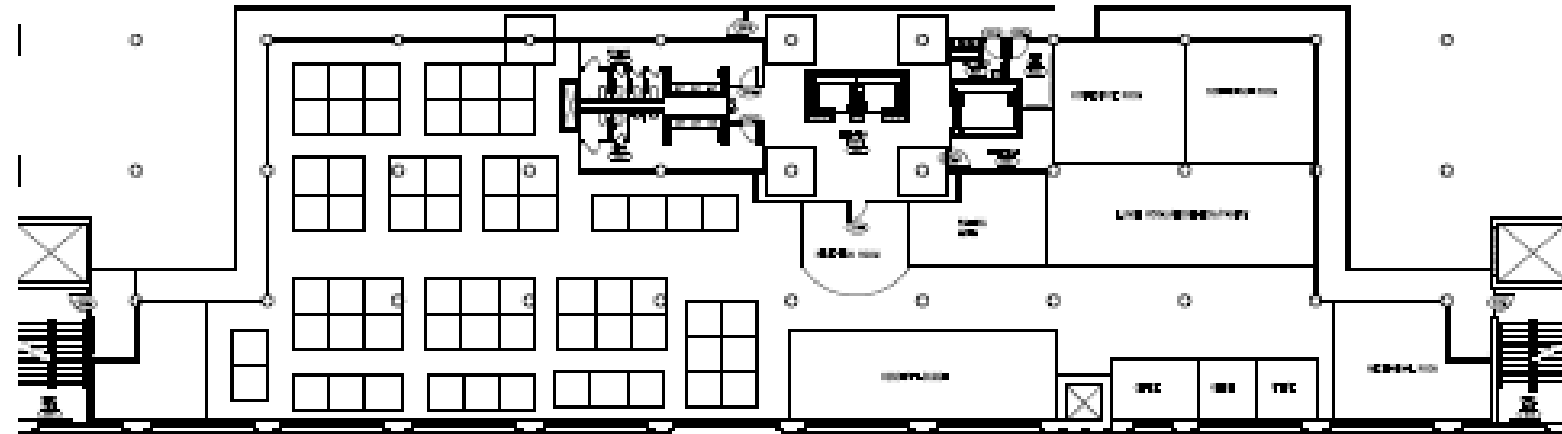
CONFERENCE ROOMS



# SPACE PLAN SKETCHES

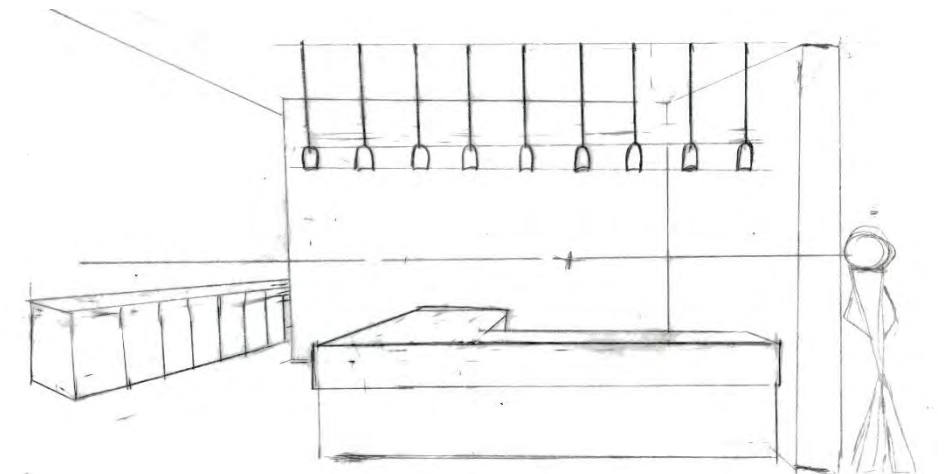
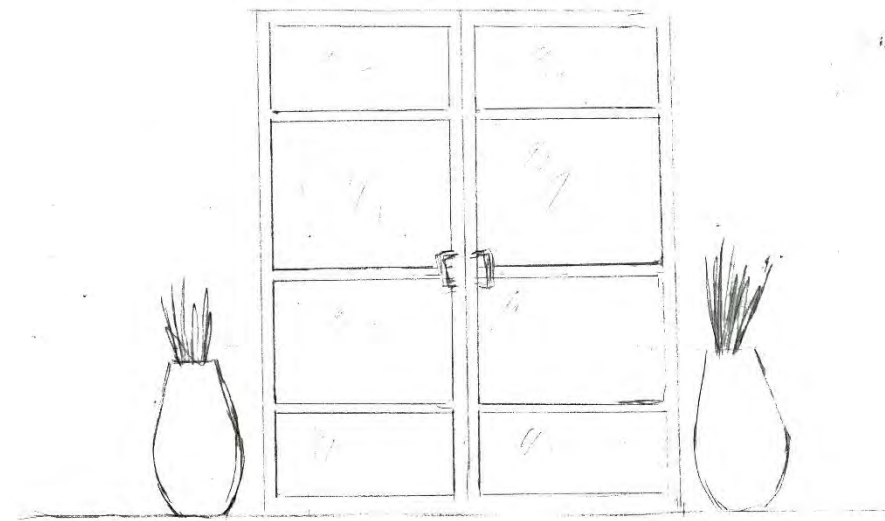
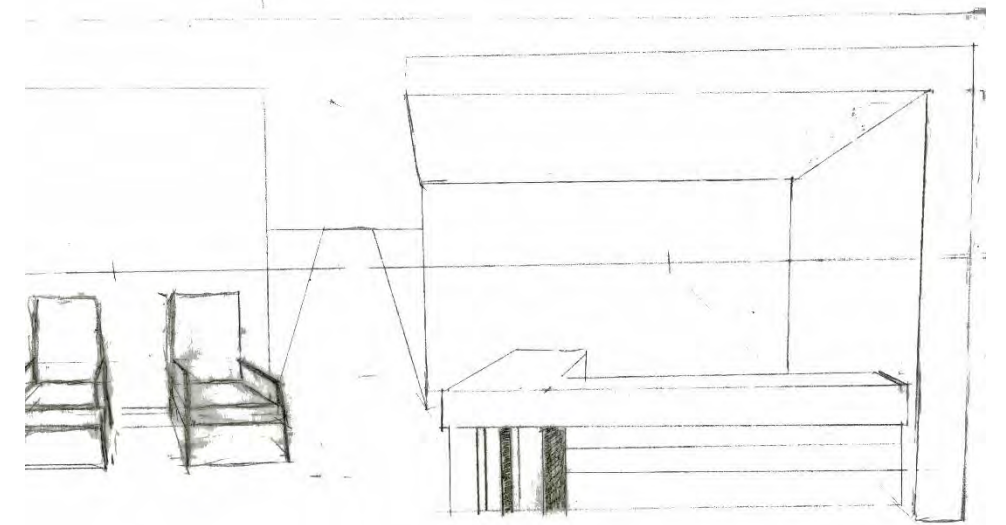
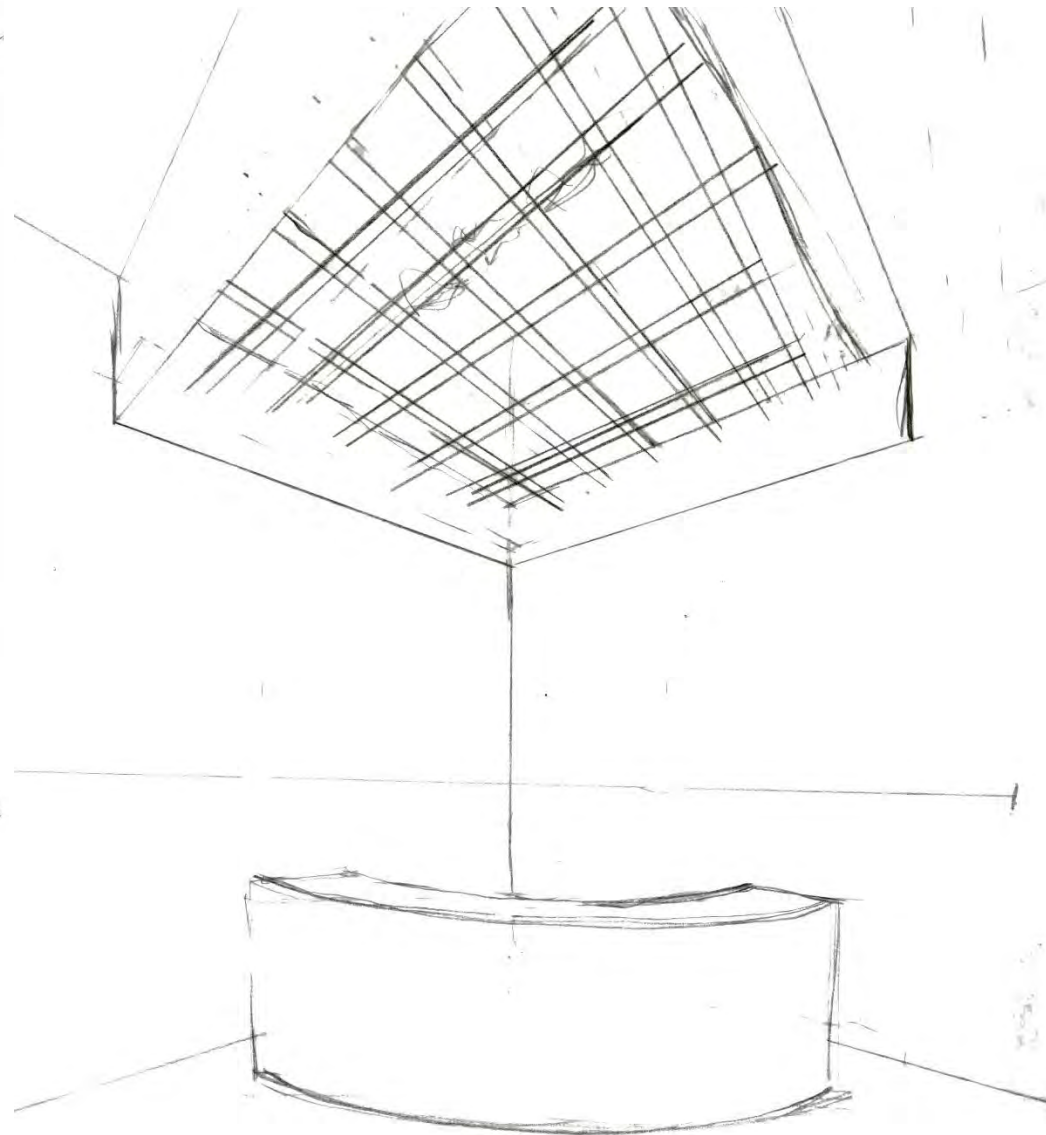
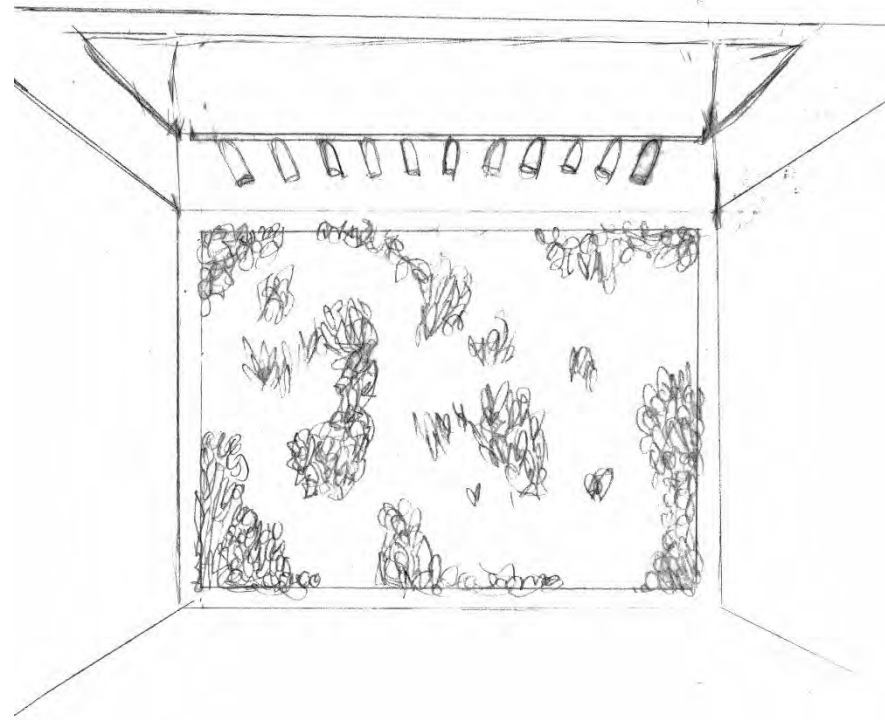


# SPACE PLAN SKETCHES

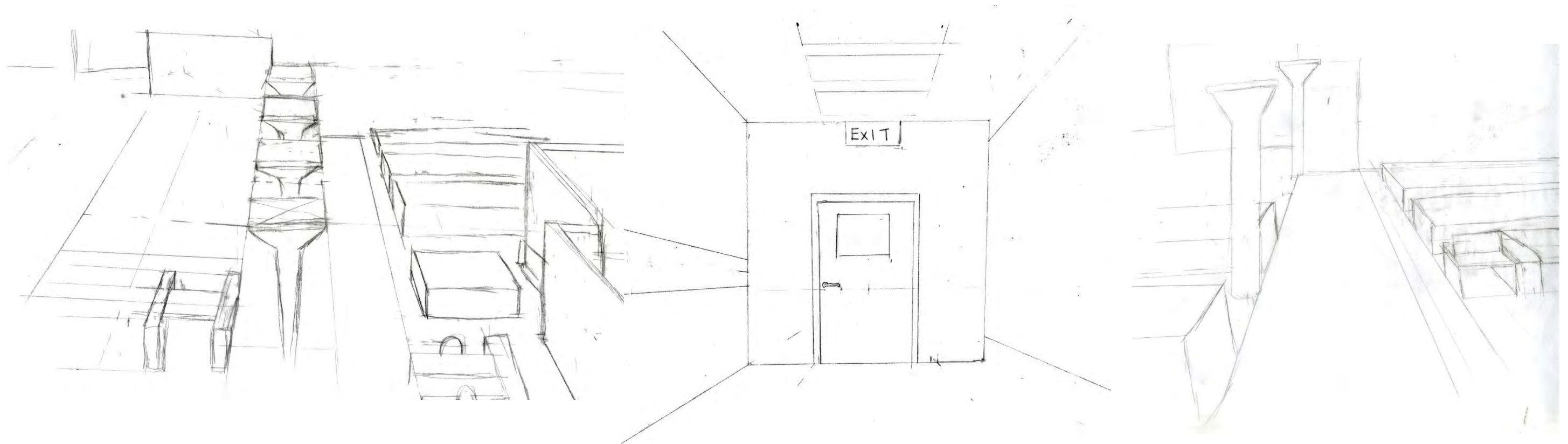




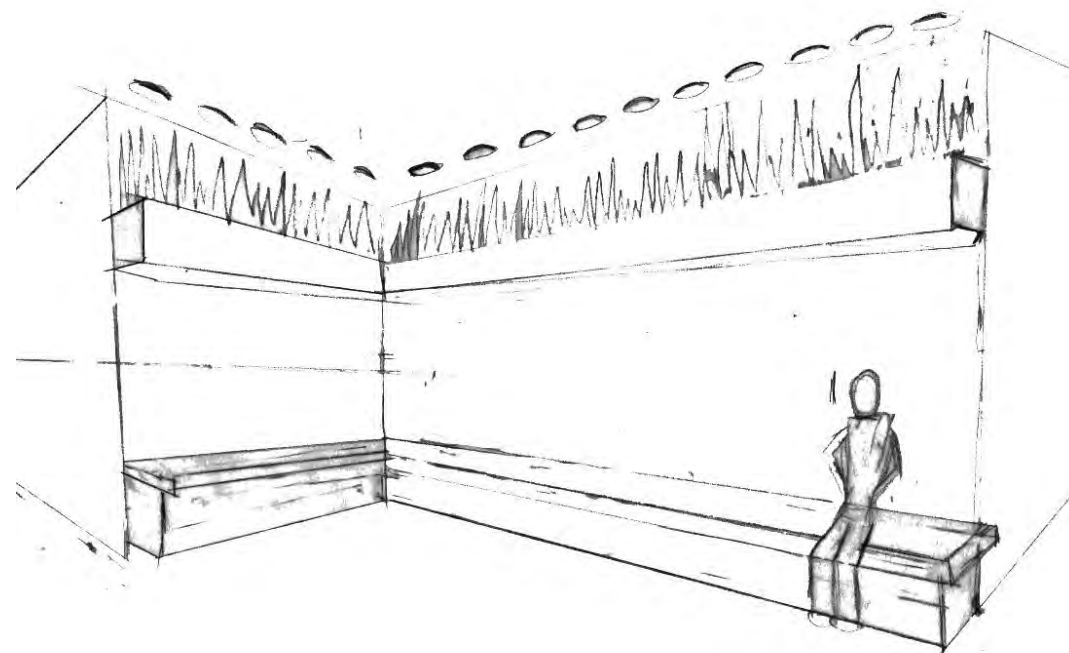
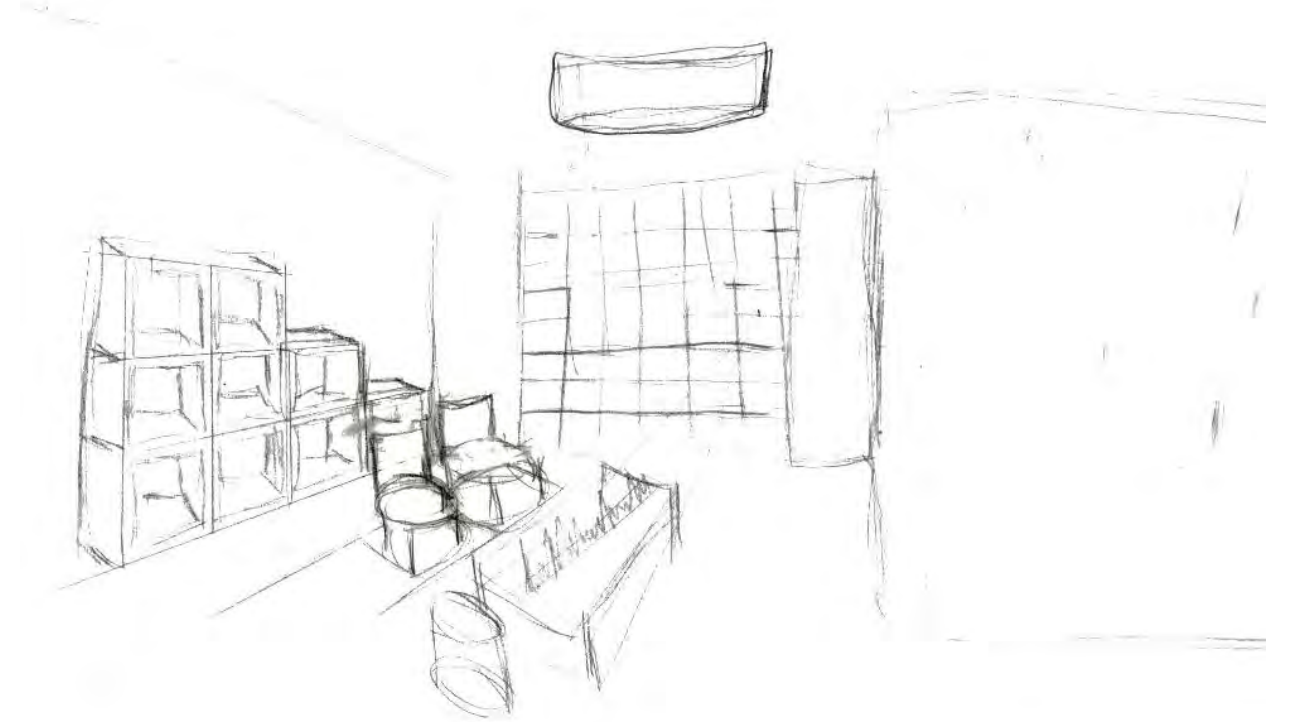
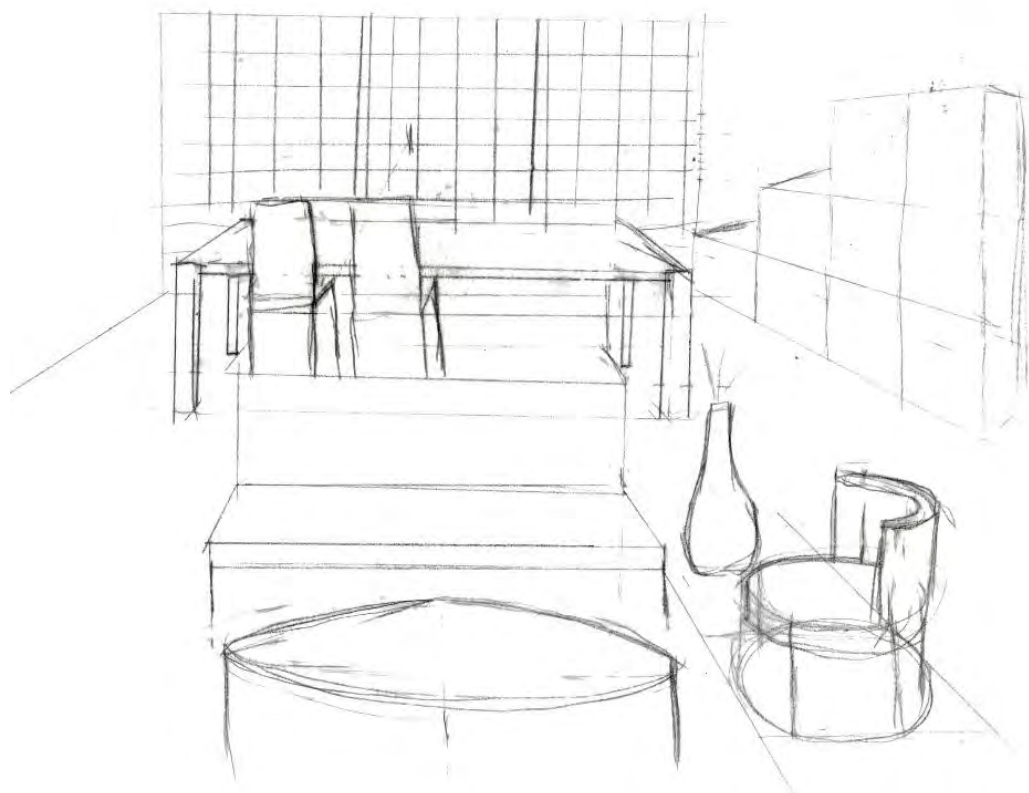
# ENTRY SKETCHES



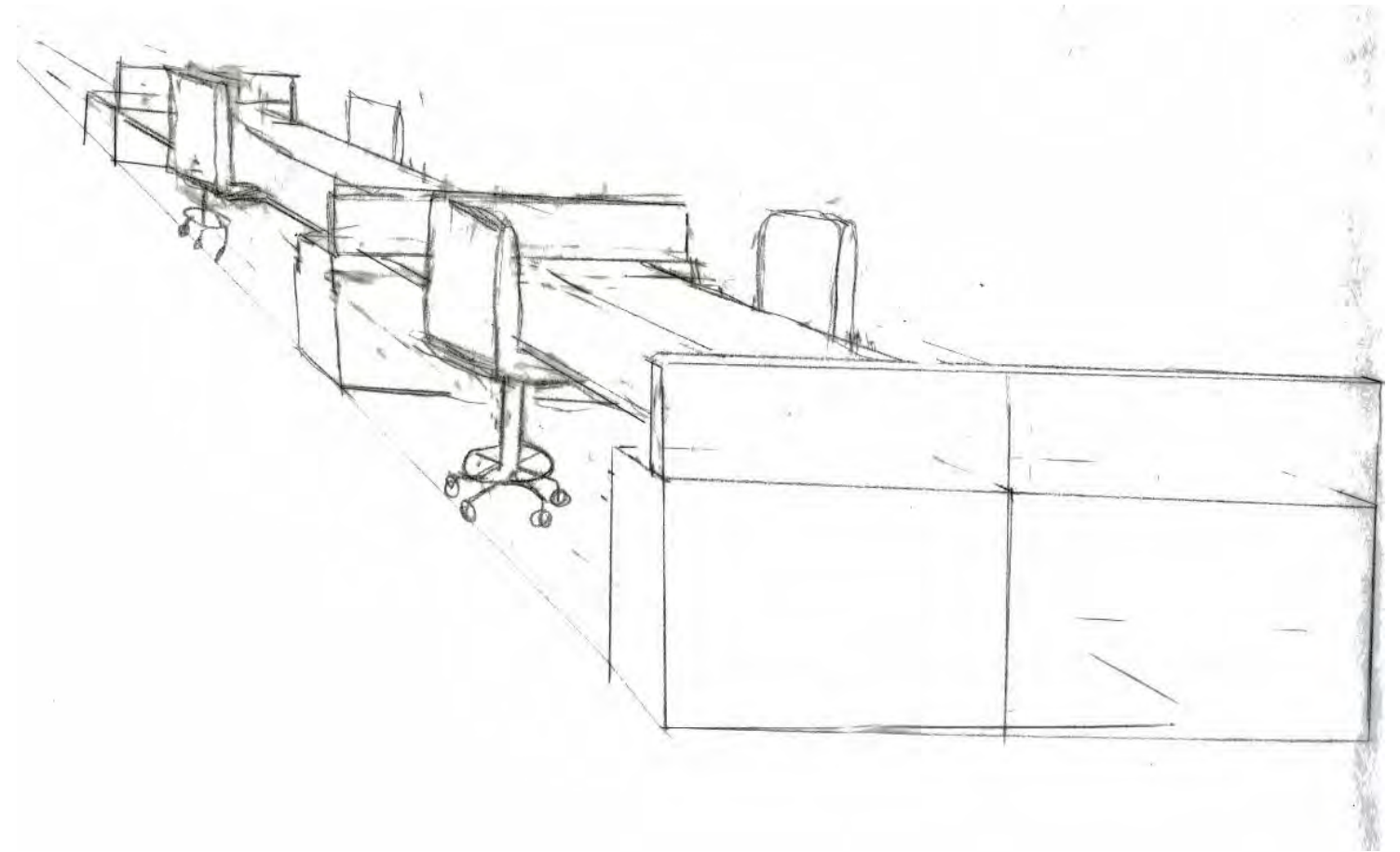
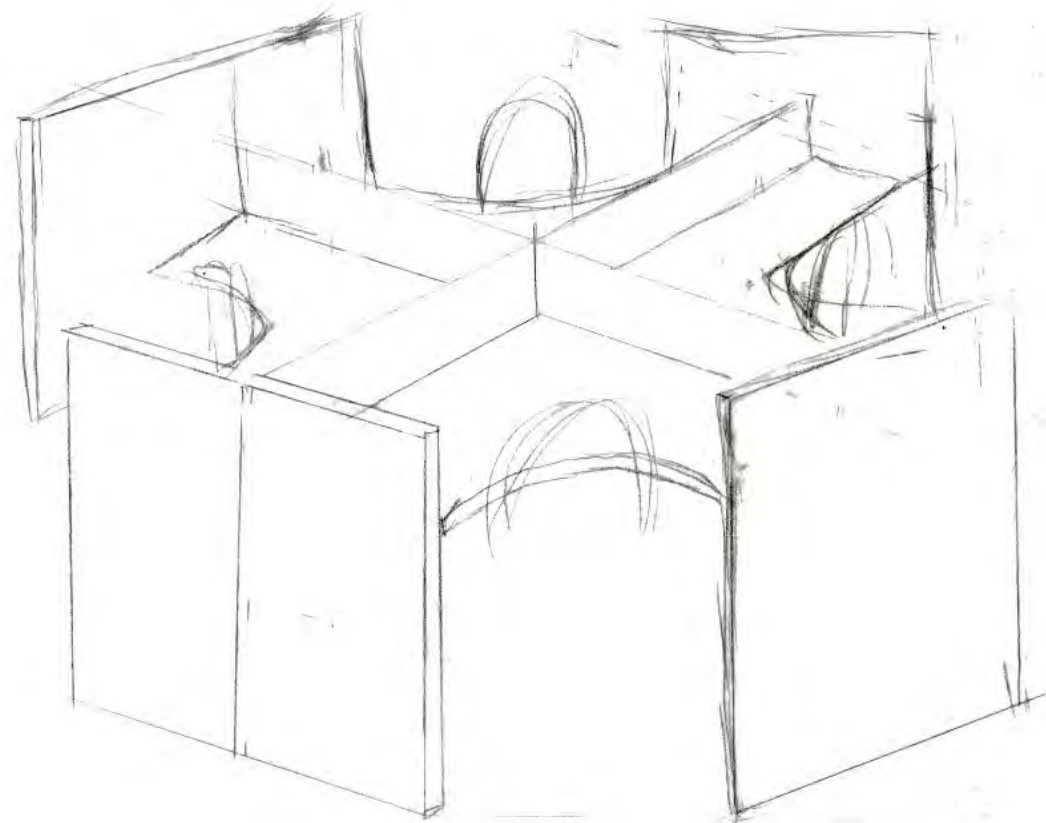
# MAIN CORRIDOR SKETCHES



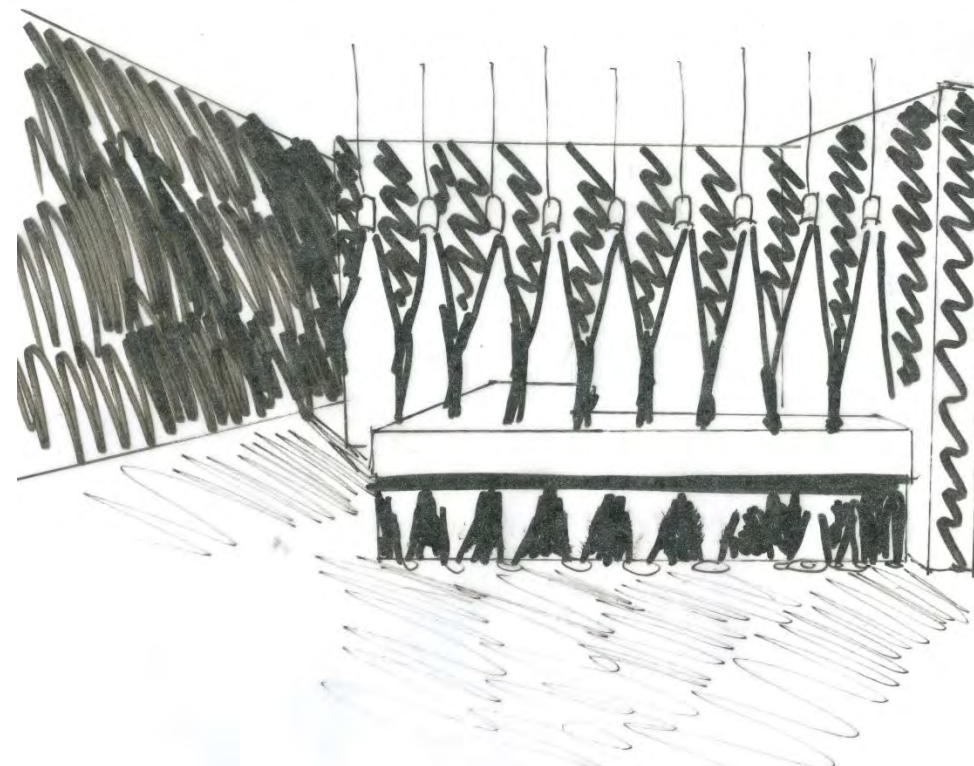
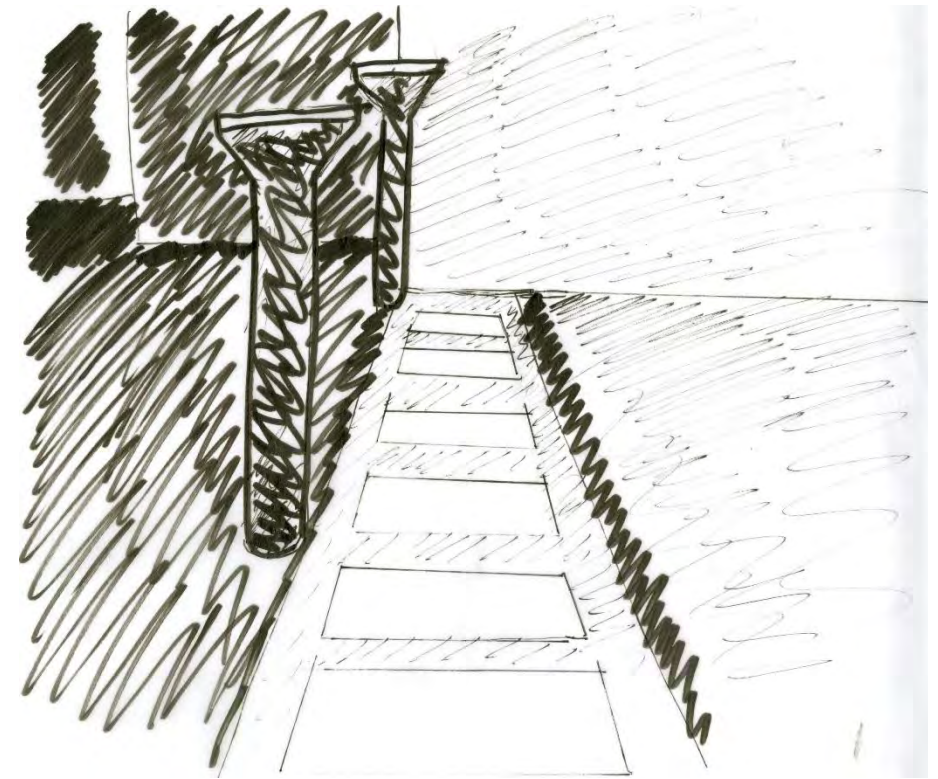
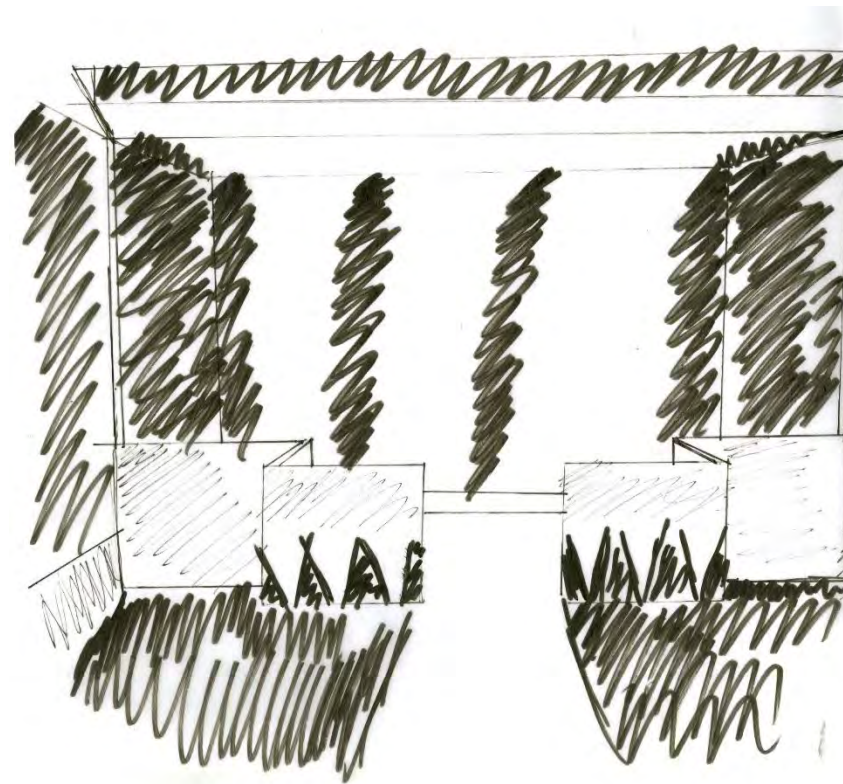
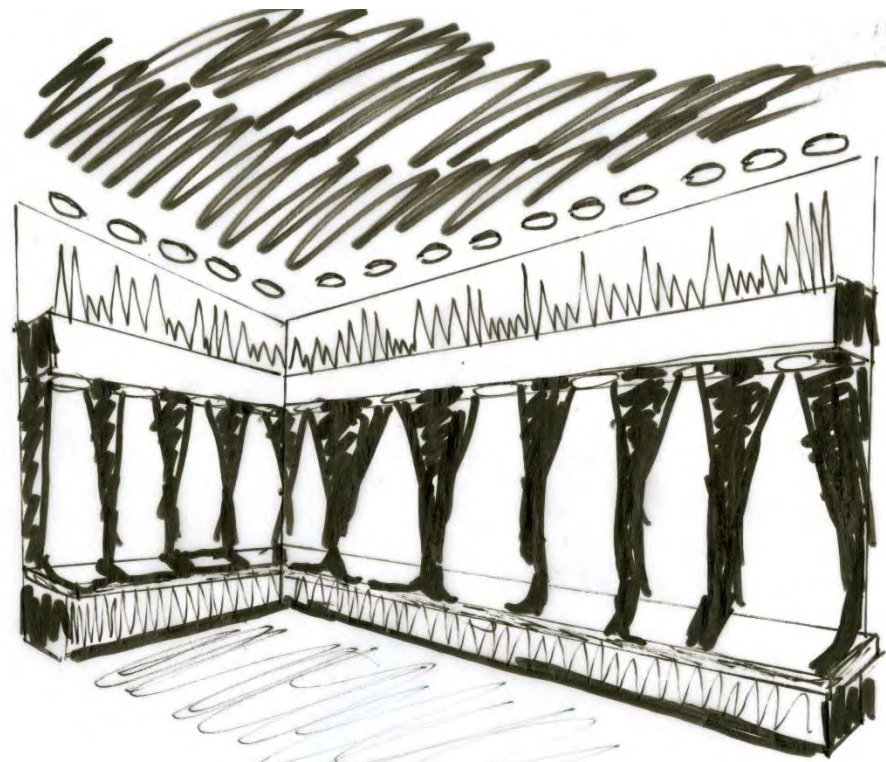
# LOUNGE SKETCHES



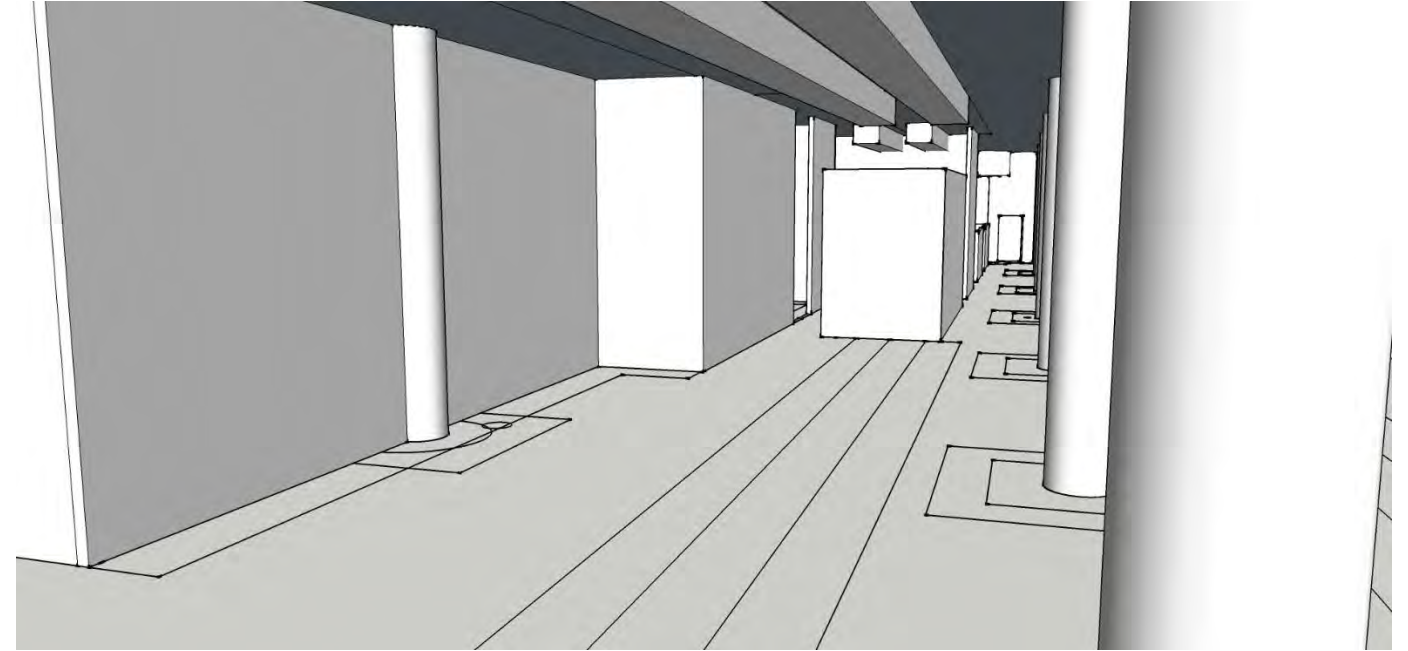
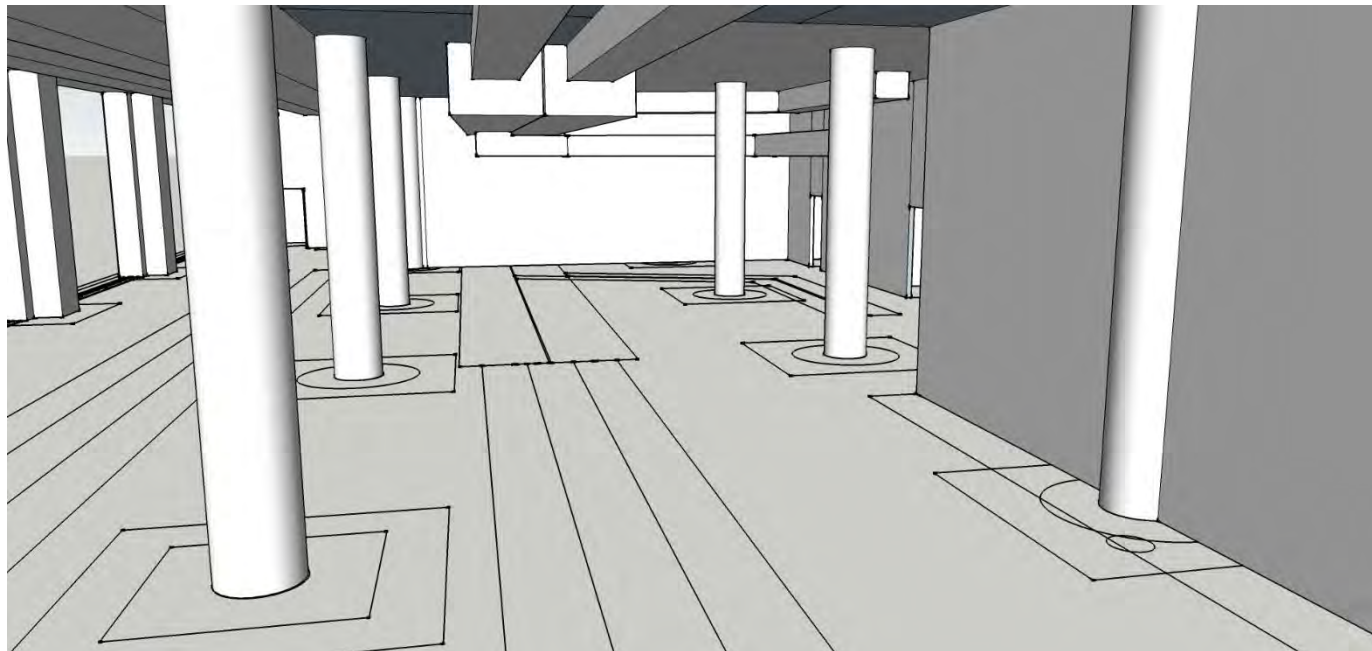
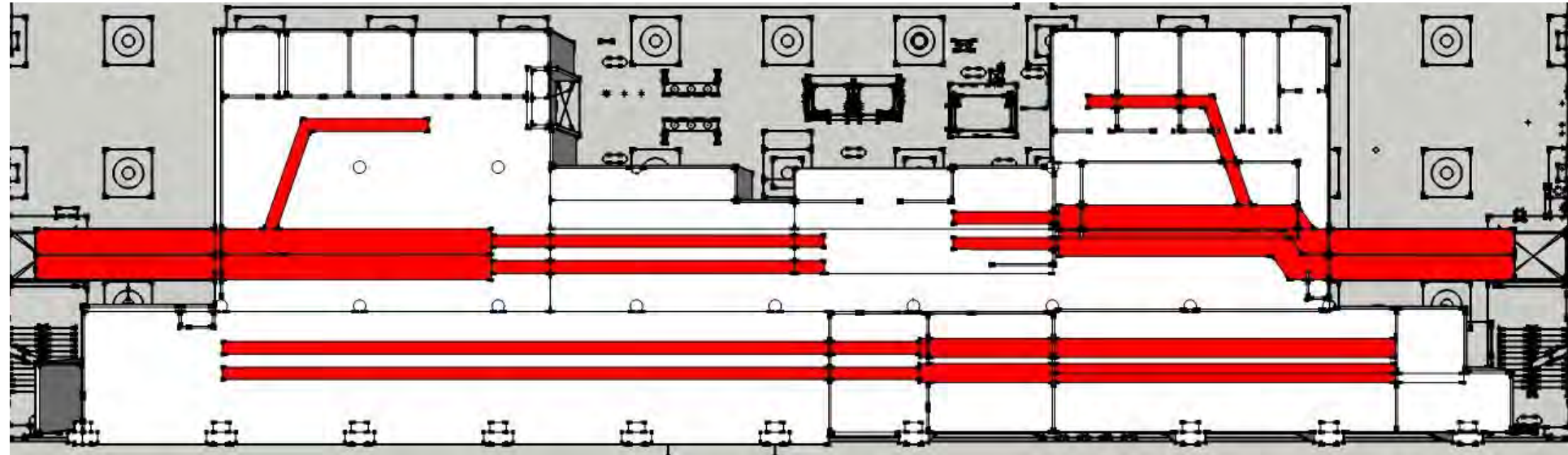
# OPEN WORK AREA SKETCHES



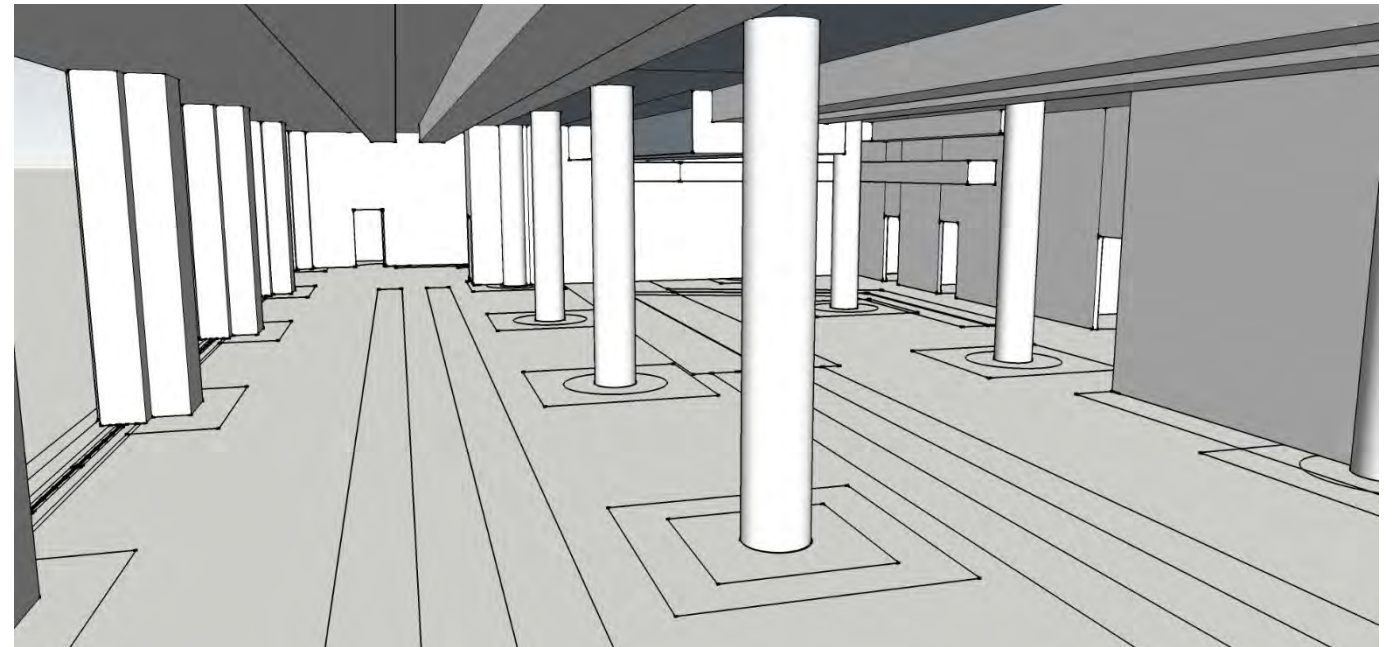
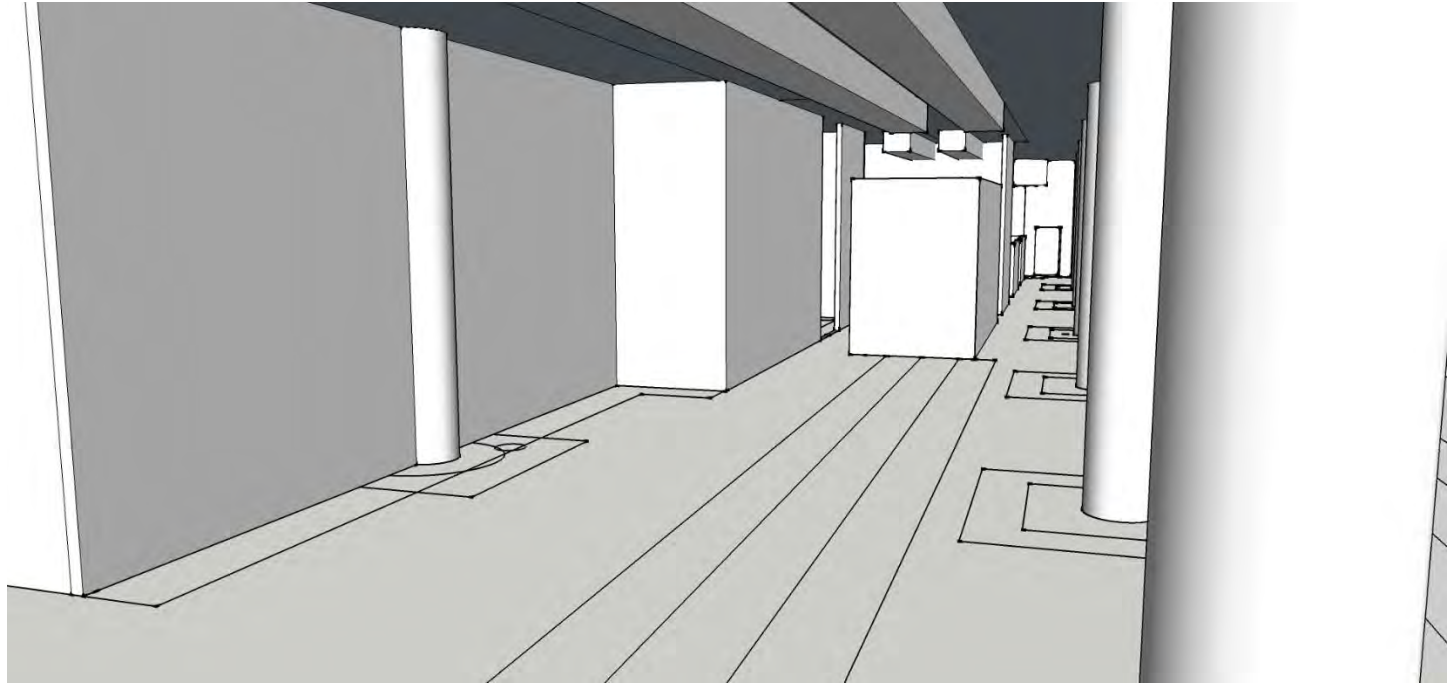
# LIGHT SKETCHES



# SYSTEMS RCP



# SYSTEMS RCP



# LIGHTING MODEL





# STATEMENT OF SUSTAINABILITY STRATEGIES

## LIGHTING:

- Occupancy sensors will be put in low traffic areas (lunch room, concept lounge, breakout rooms, etc.) to ensure energy isn't being wasted
- LED lighting will be used throughout the space for low energy usage
- Task lighting will be at every work station and desk instead of huge down lighting fixtures

## MATERIALS:

- Eco-friendly materials will be used throughout the entire space to ensure a maximum amount of sustainability
- Recycled wood will be used on the partition wall in the reception area
- Fabrics woven from organic cotton, wool, or hemp will be used throughout the space instead of synthetic fabrics

