



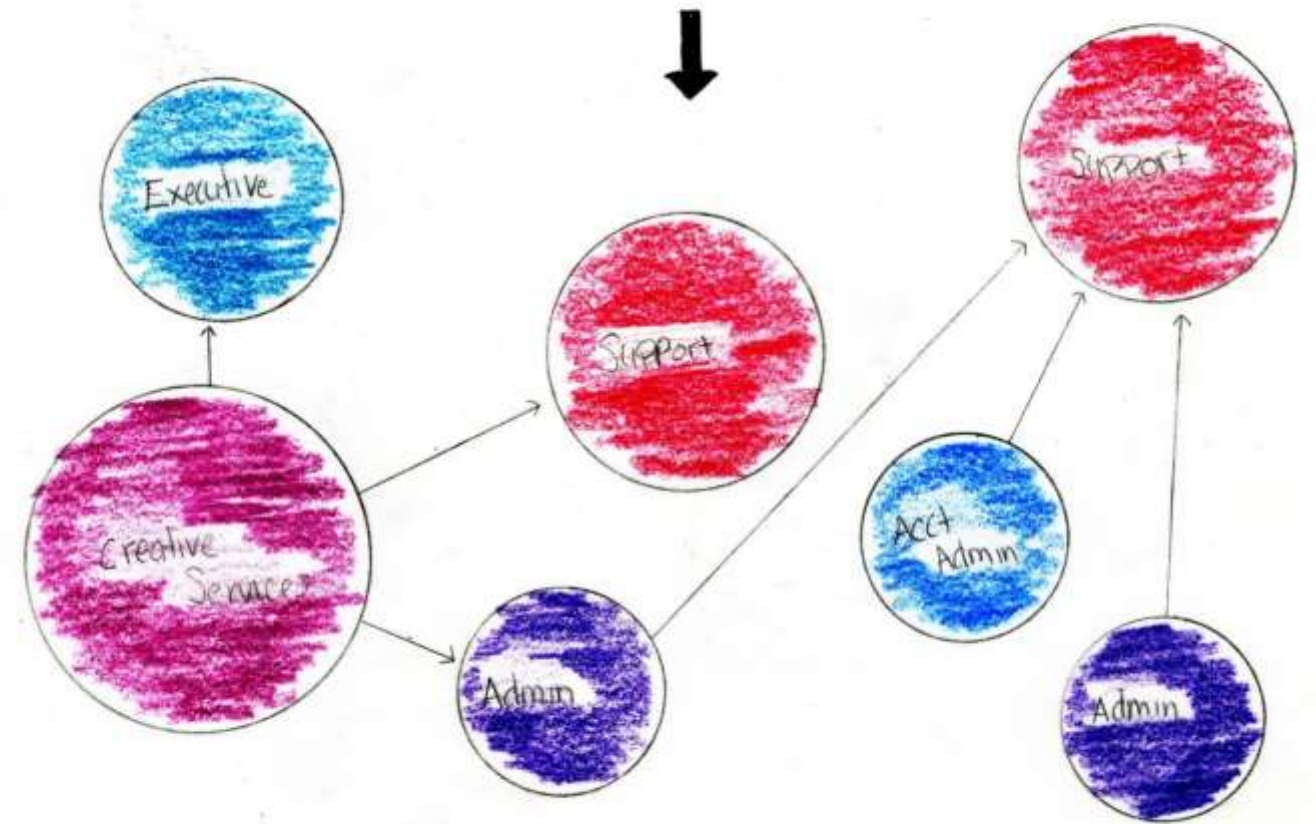
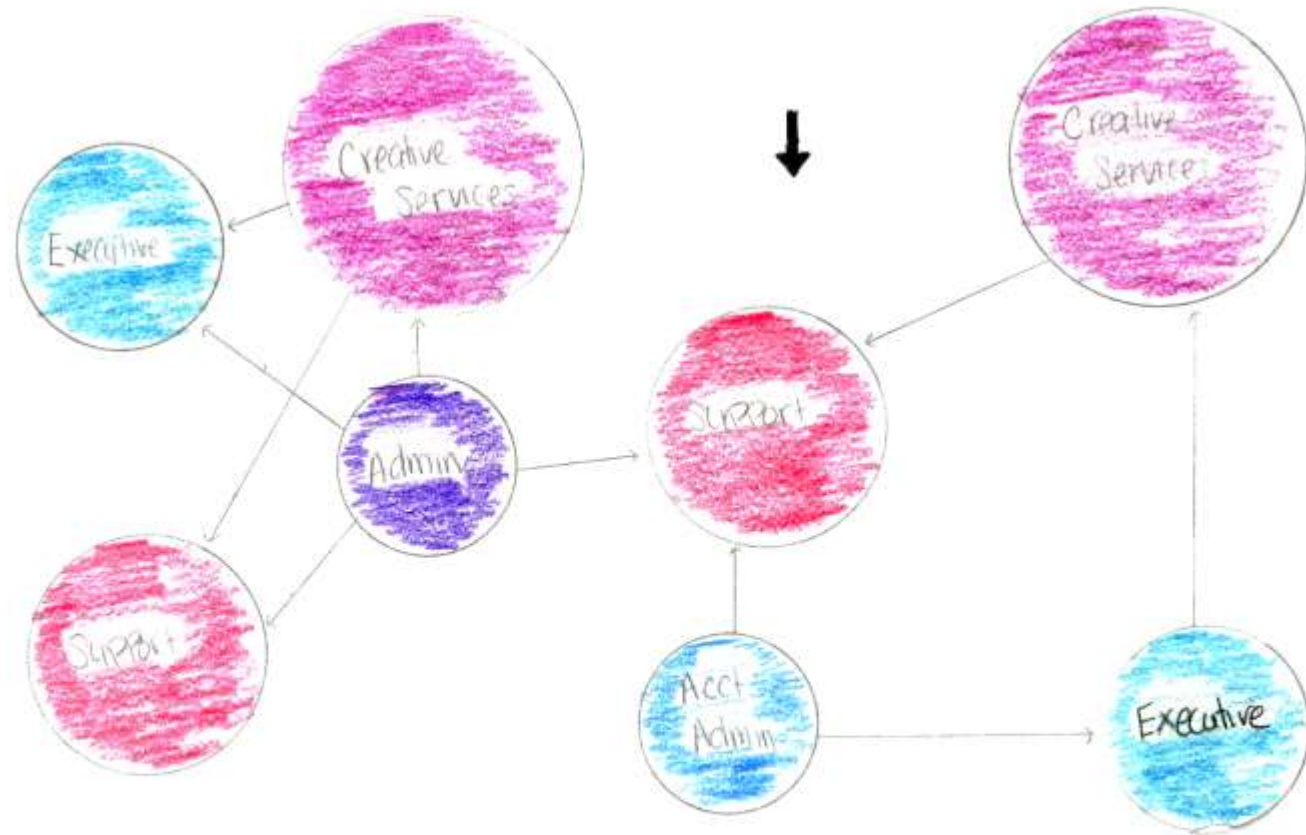
Portfolio 2

IDSN 3600

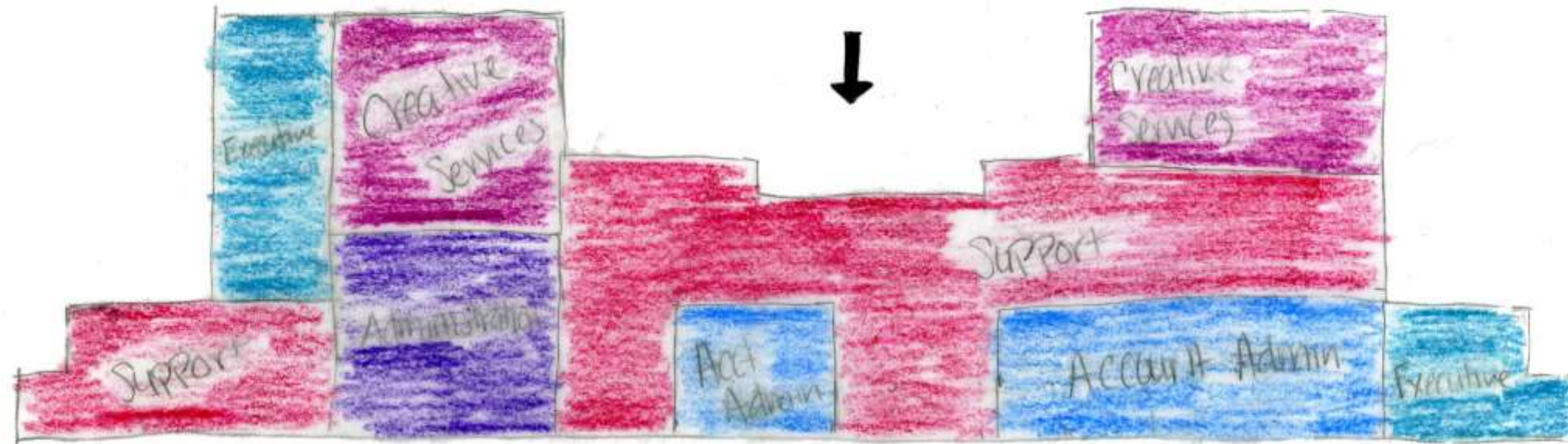
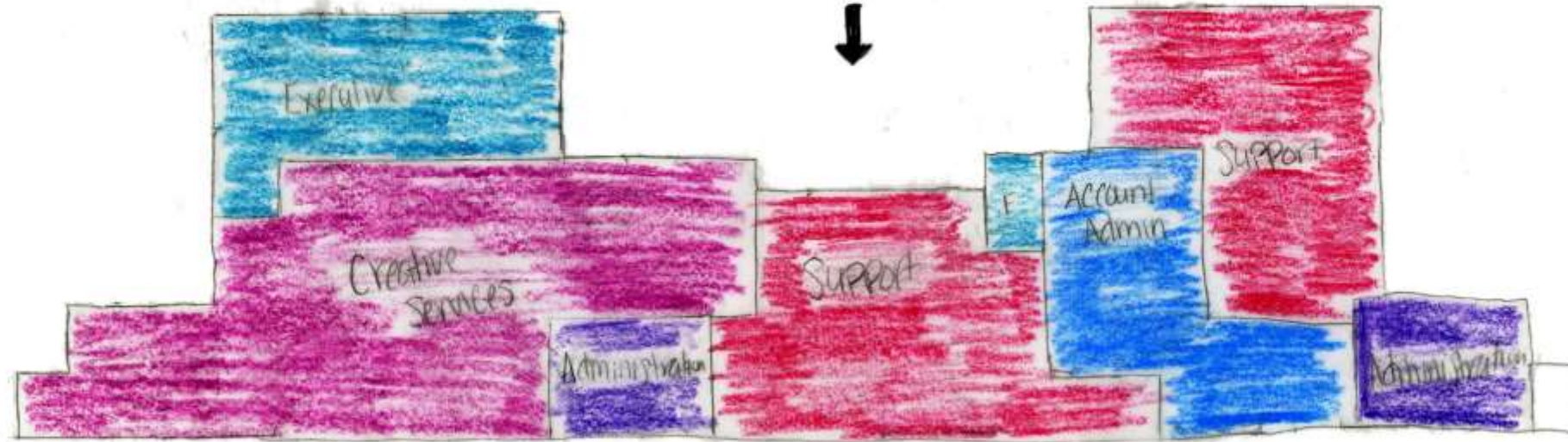
Fall 2014

Linnea Thomas

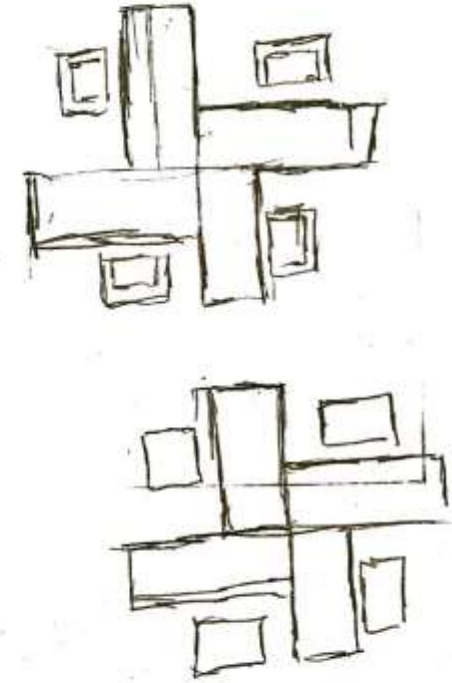
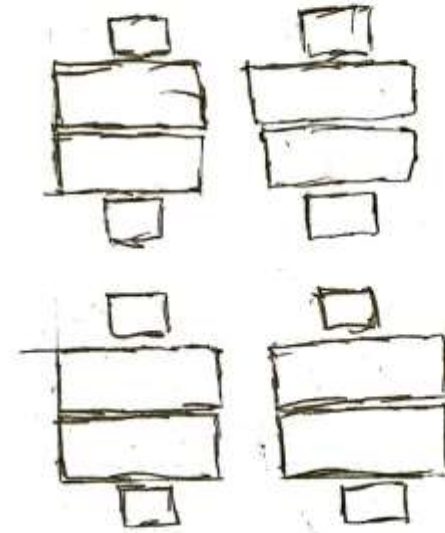
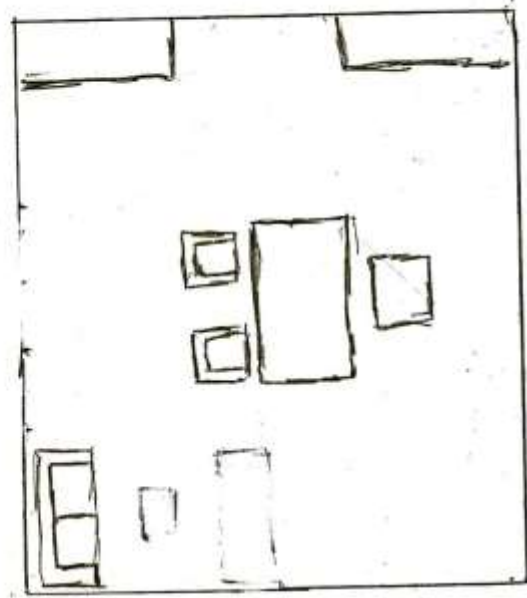
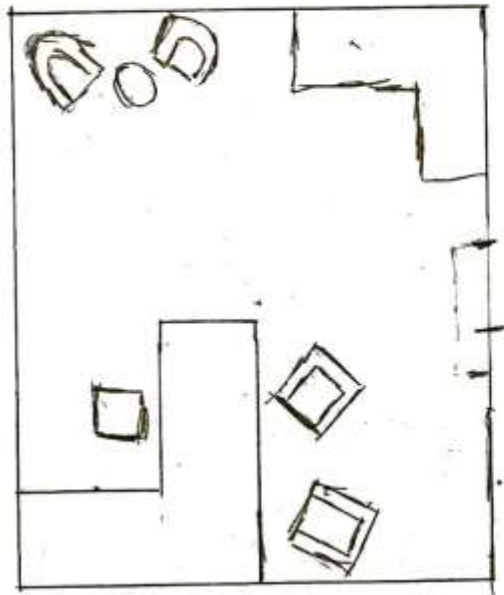
Bubble Diagram



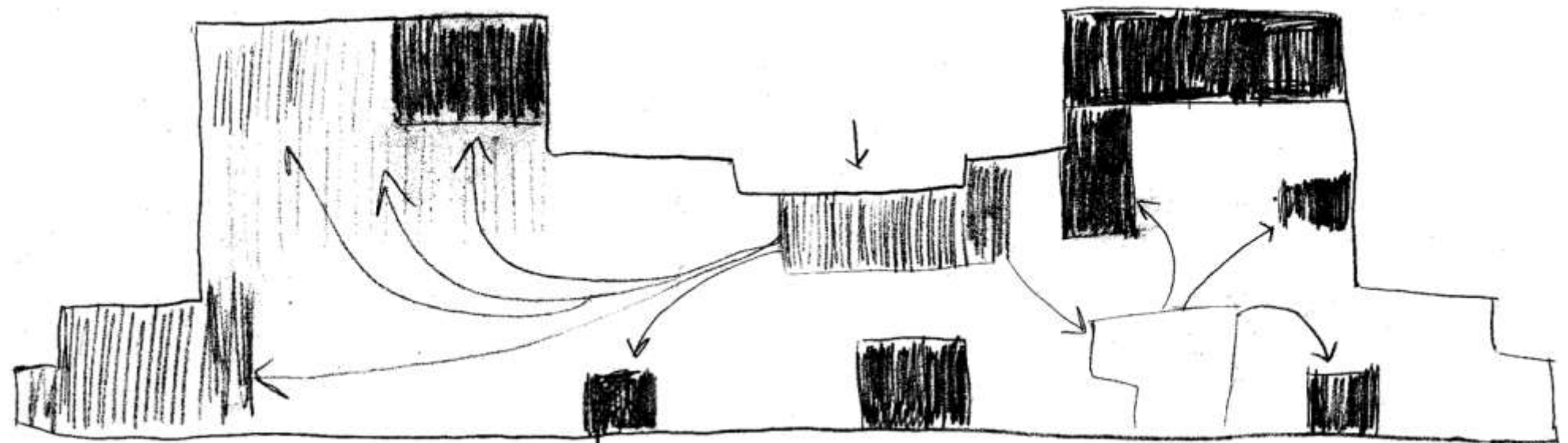
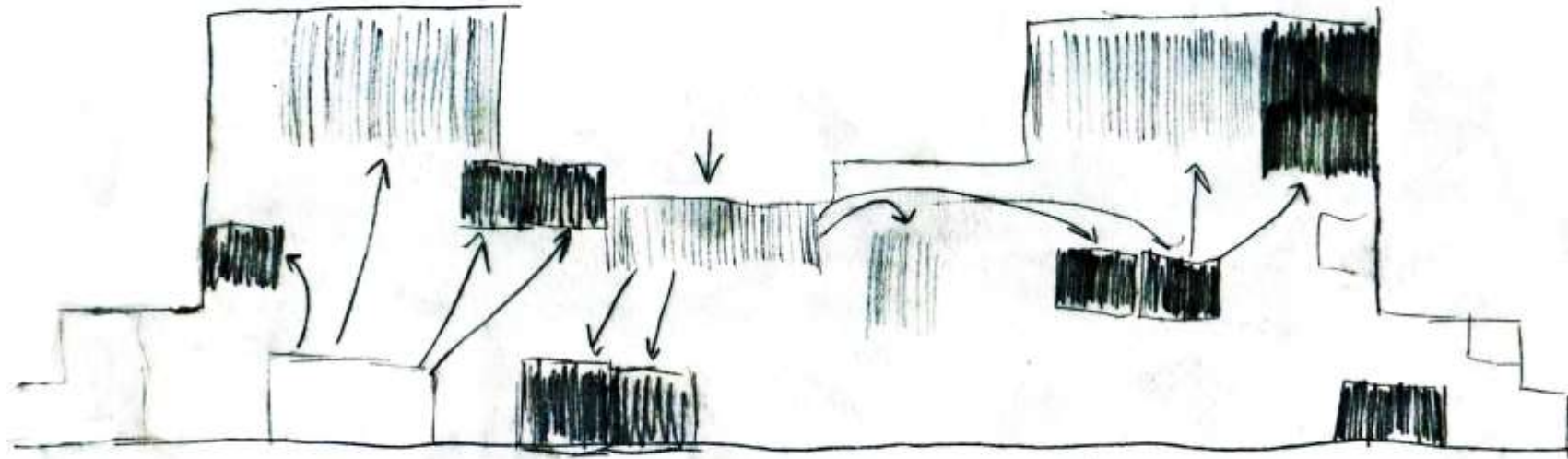
Blocking Diagram



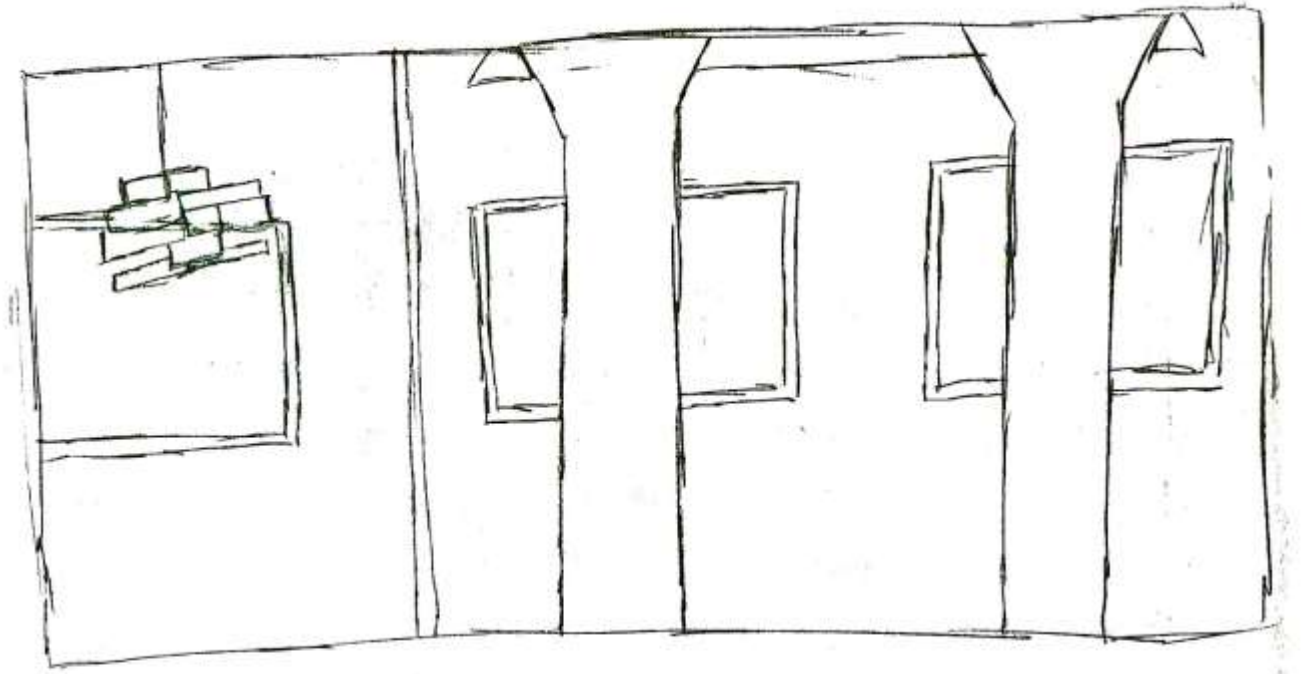
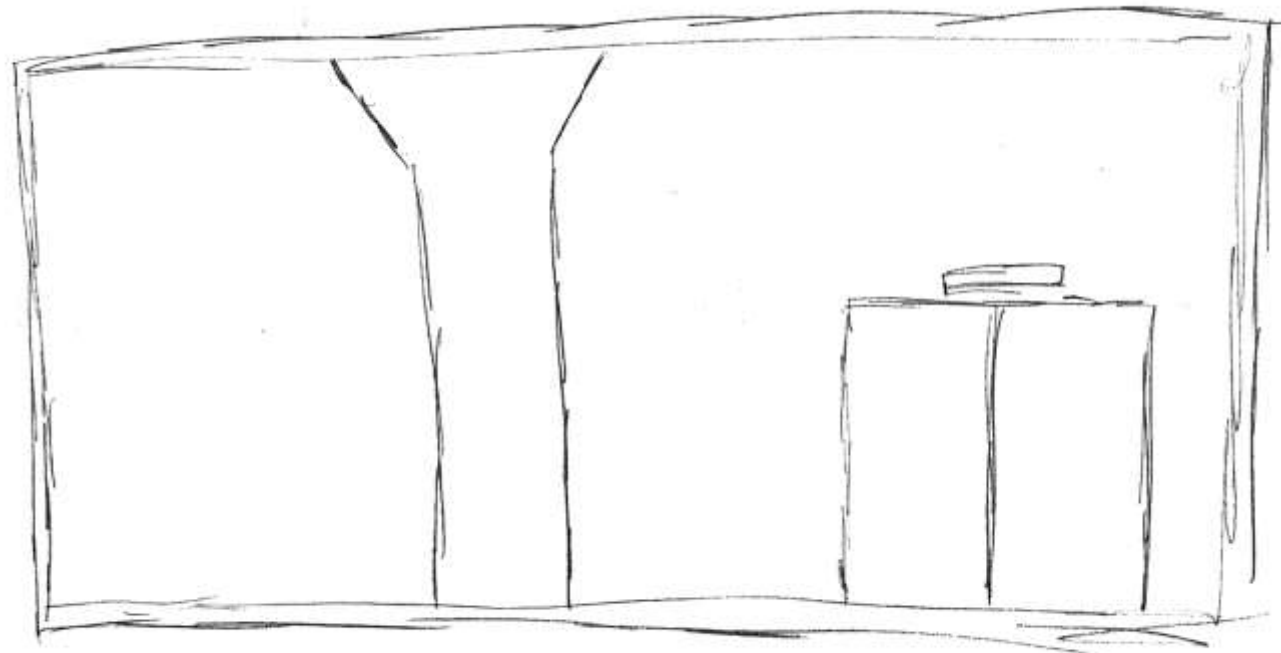
Space Standard Drawings



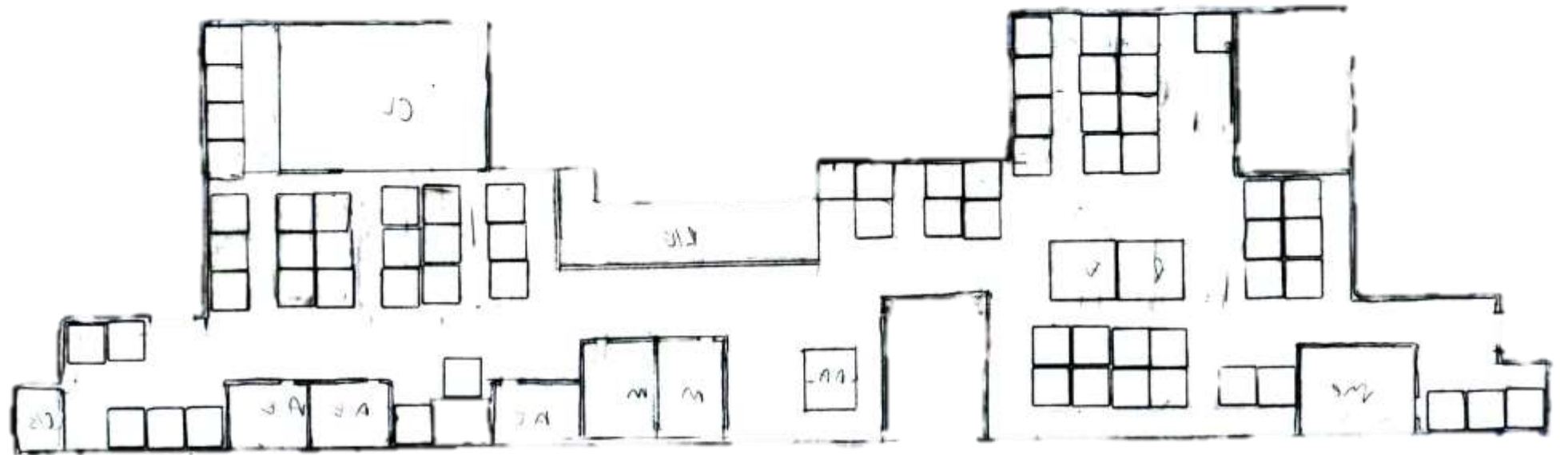
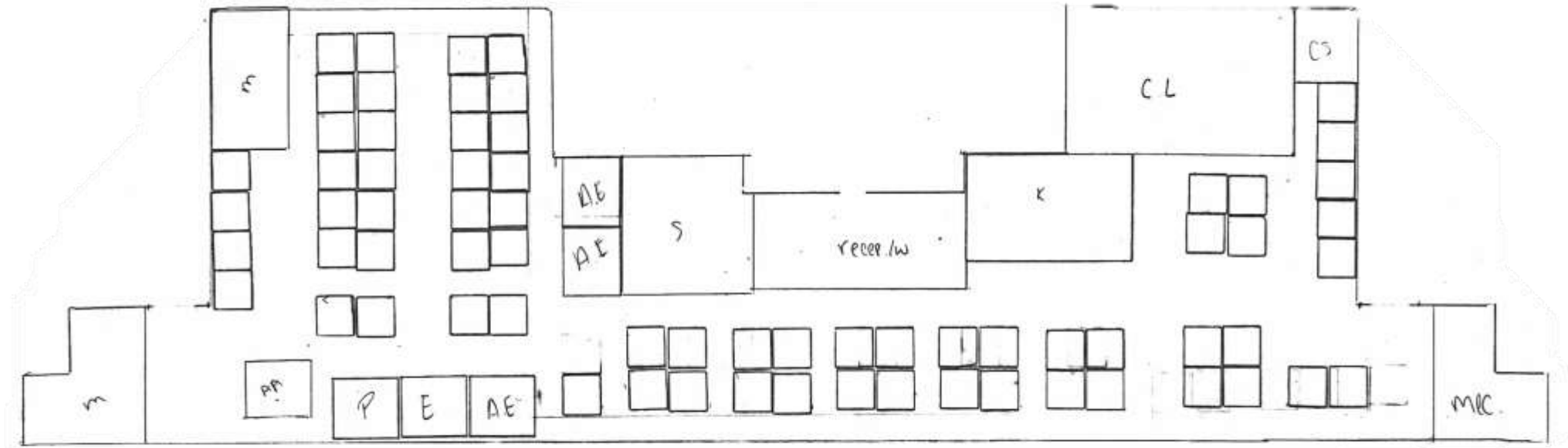
Spatial Concept



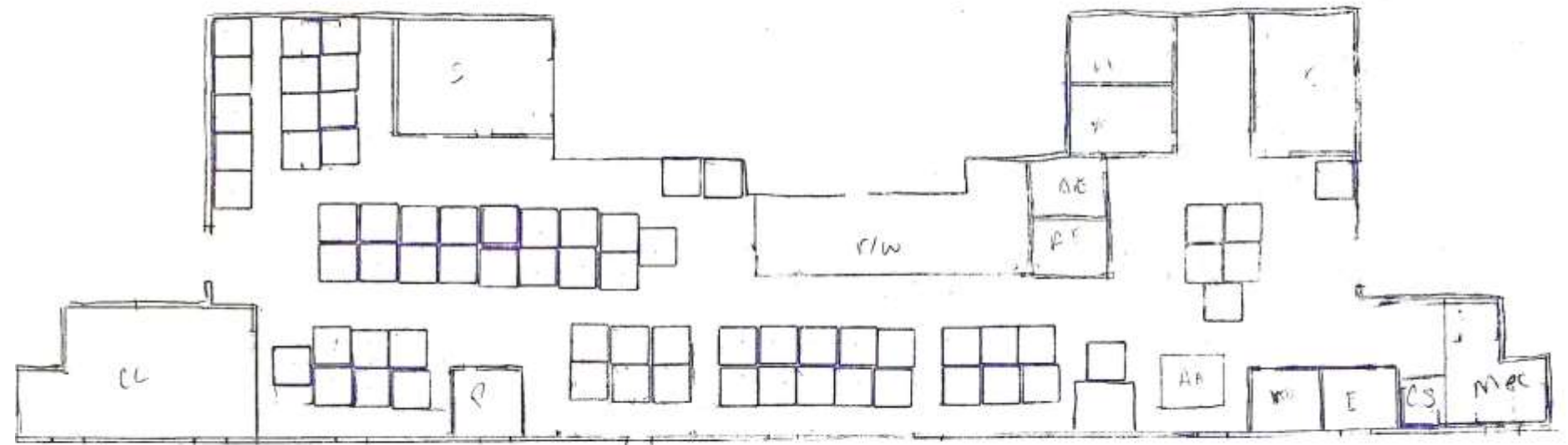
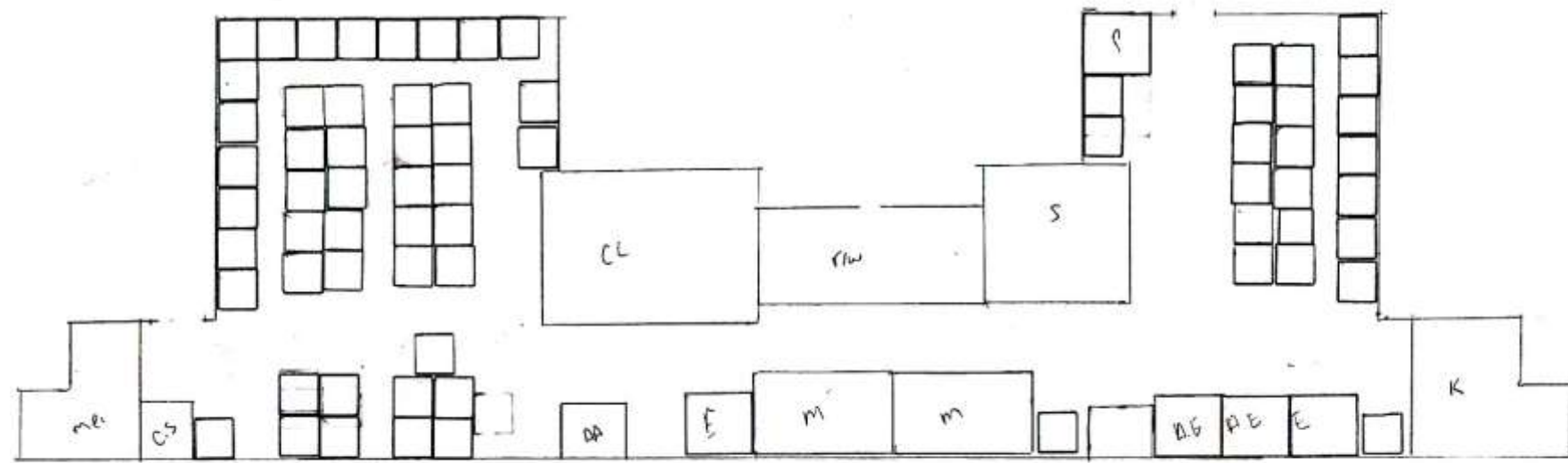
Section



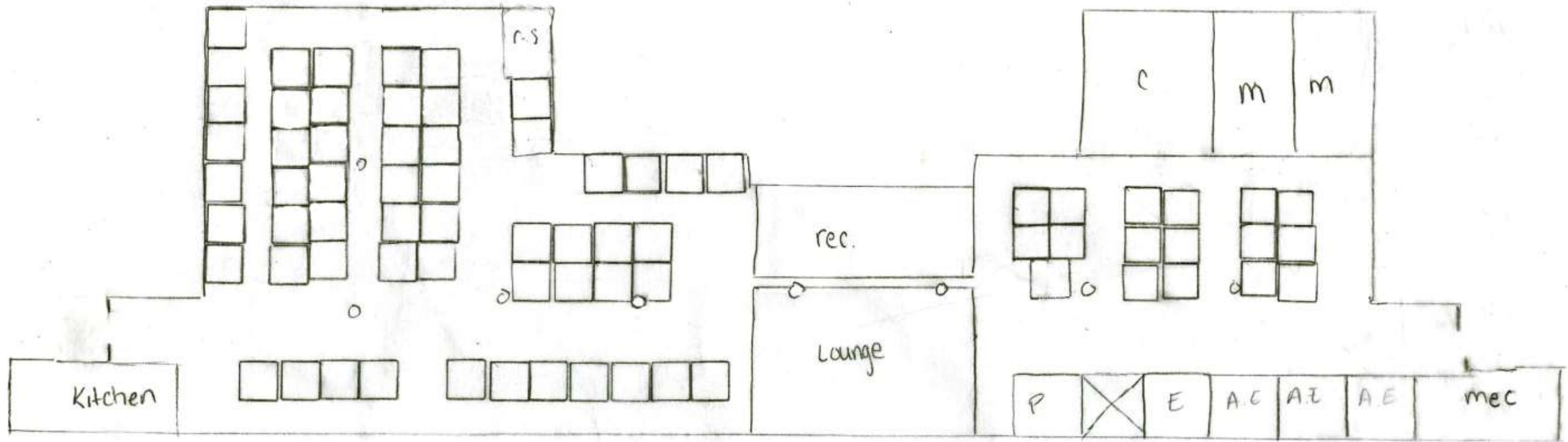
Floor plan



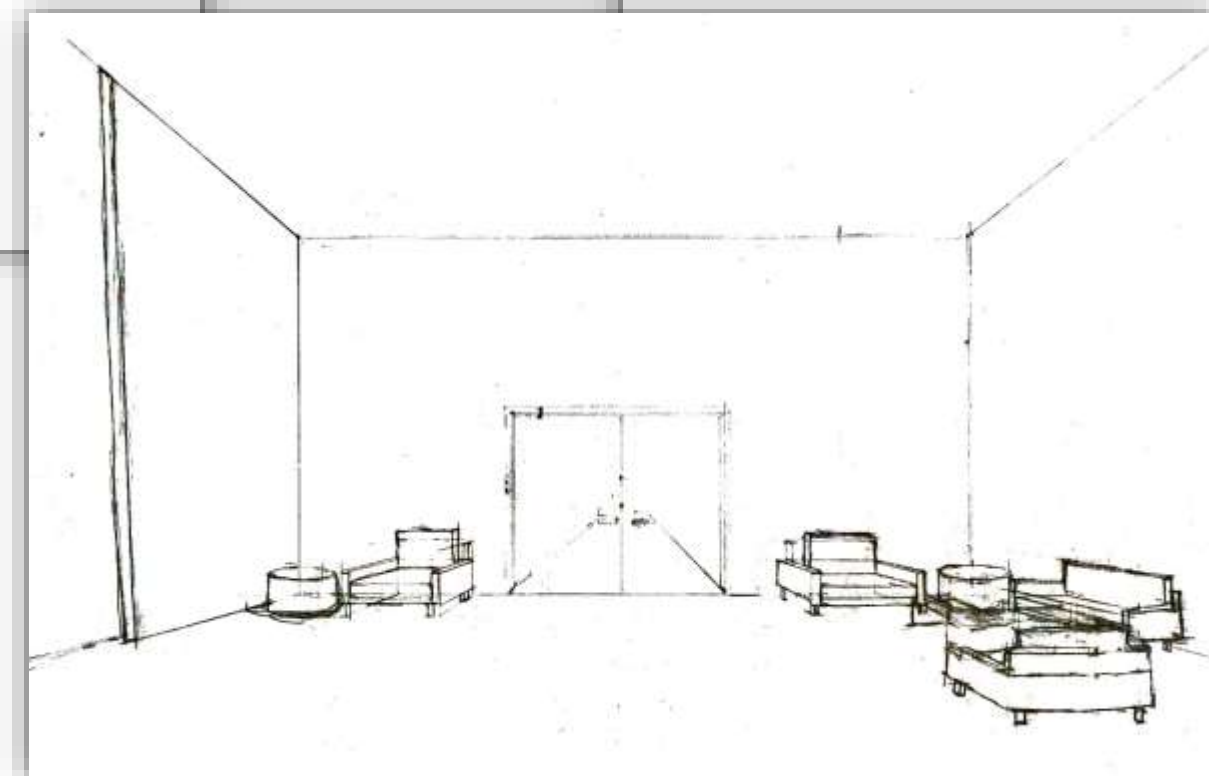
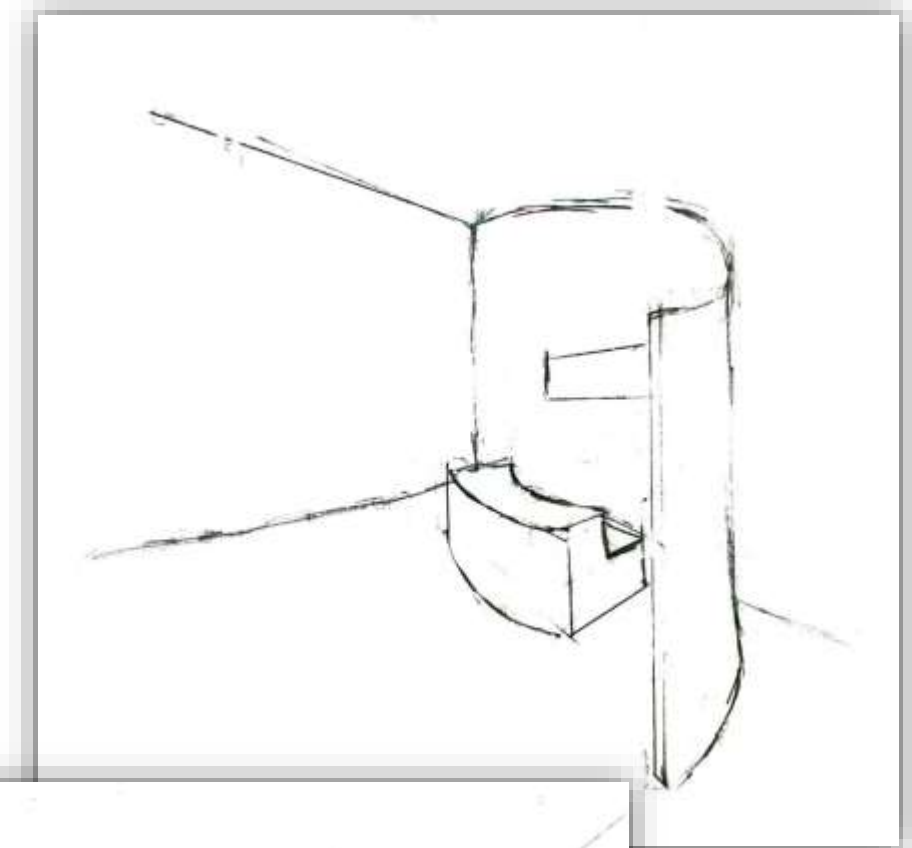
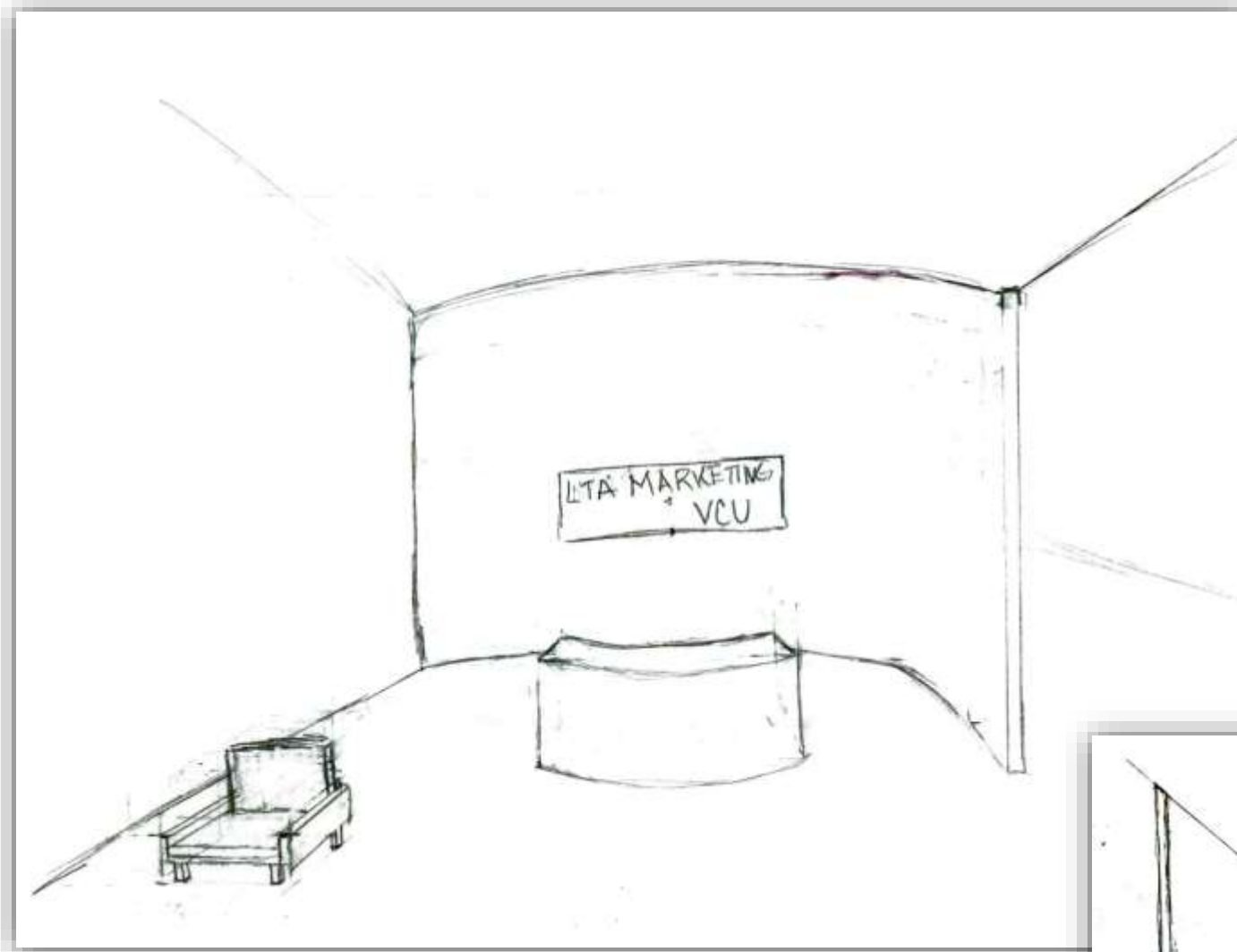
Floor plan



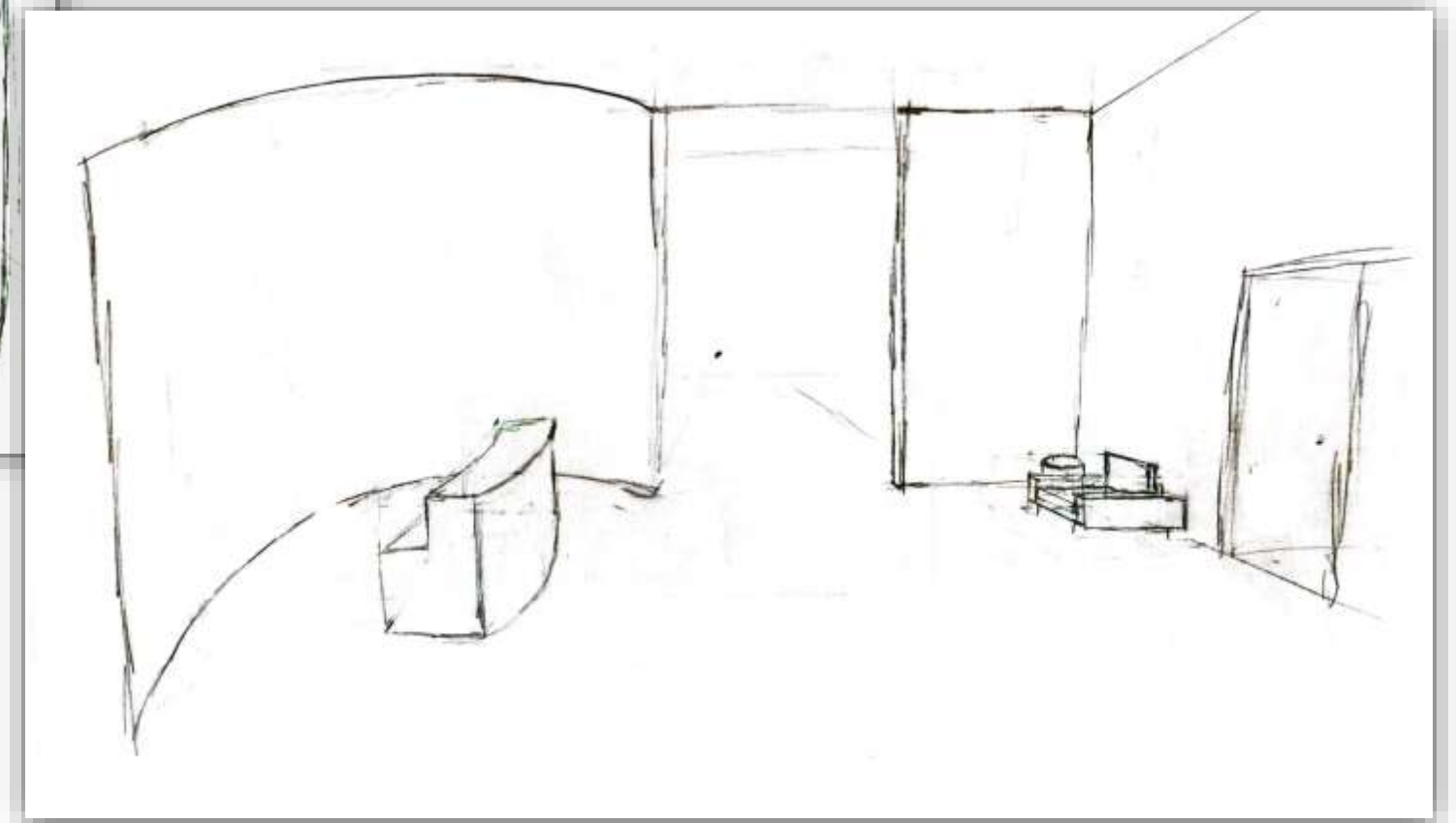
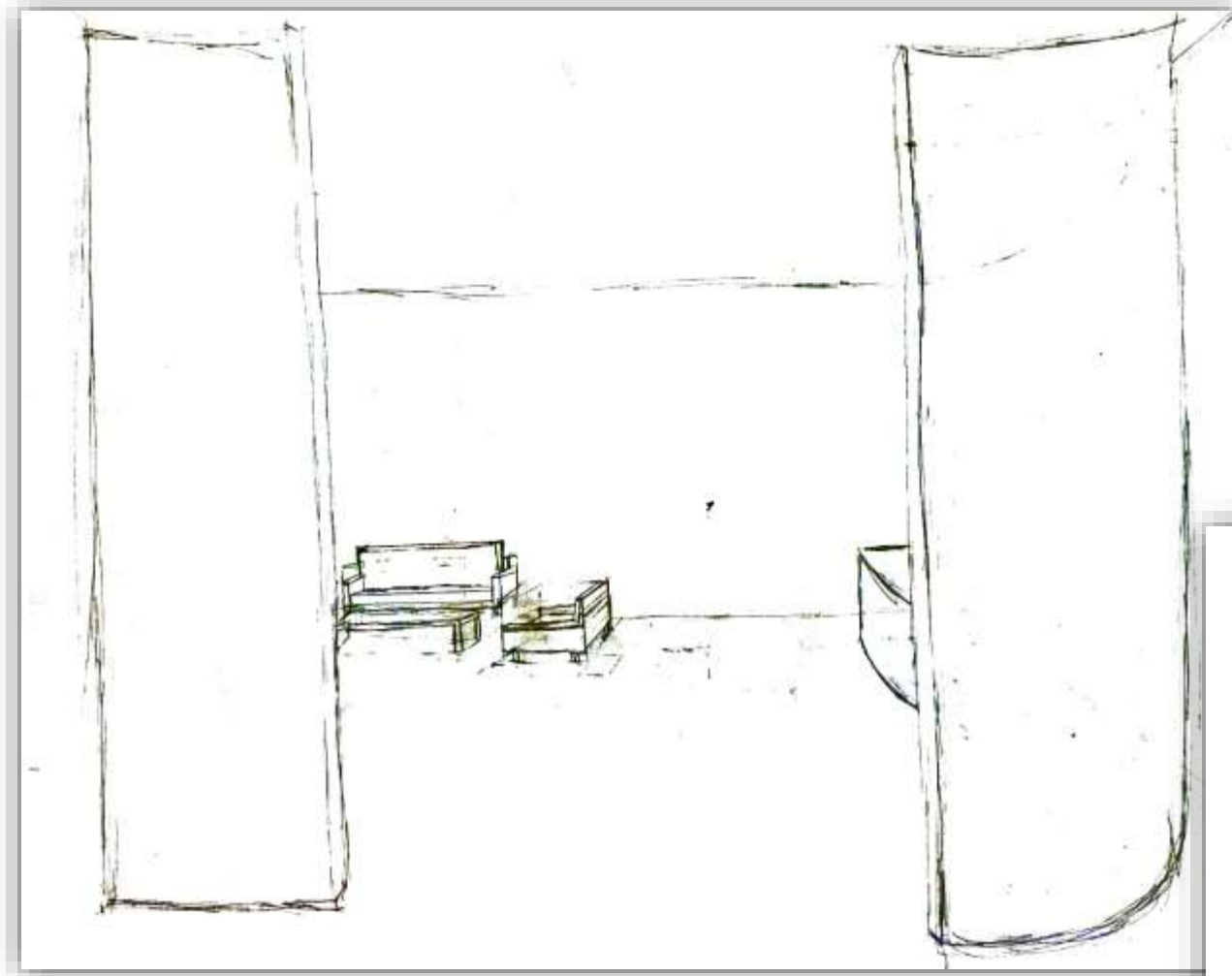
Final Floor Plan



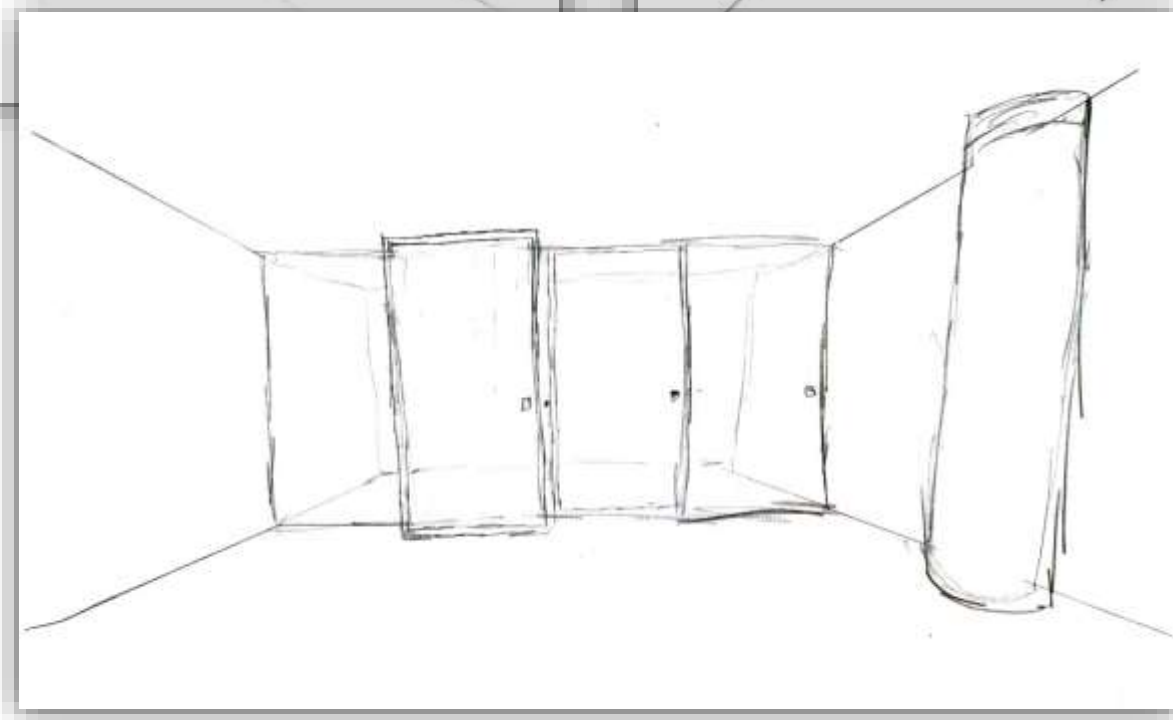
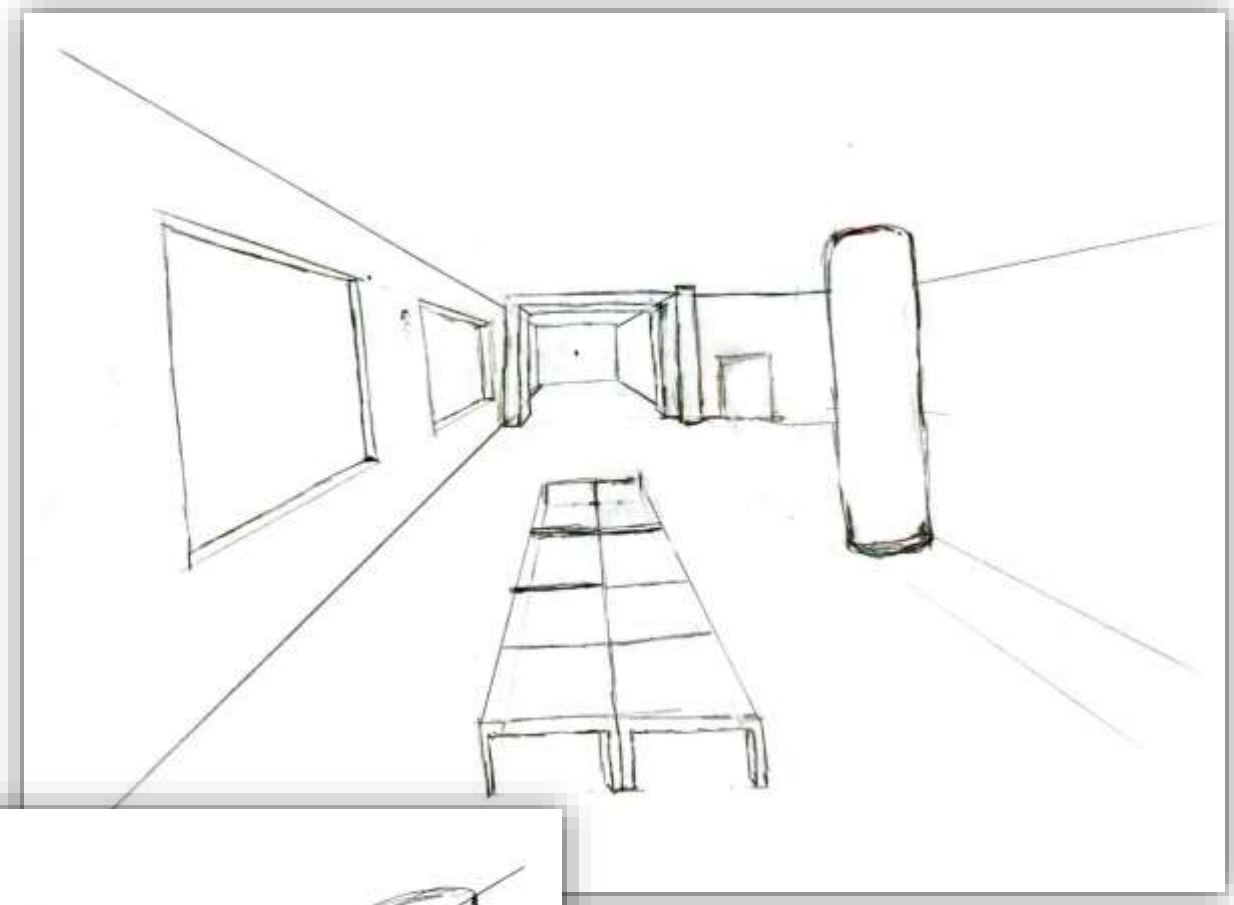
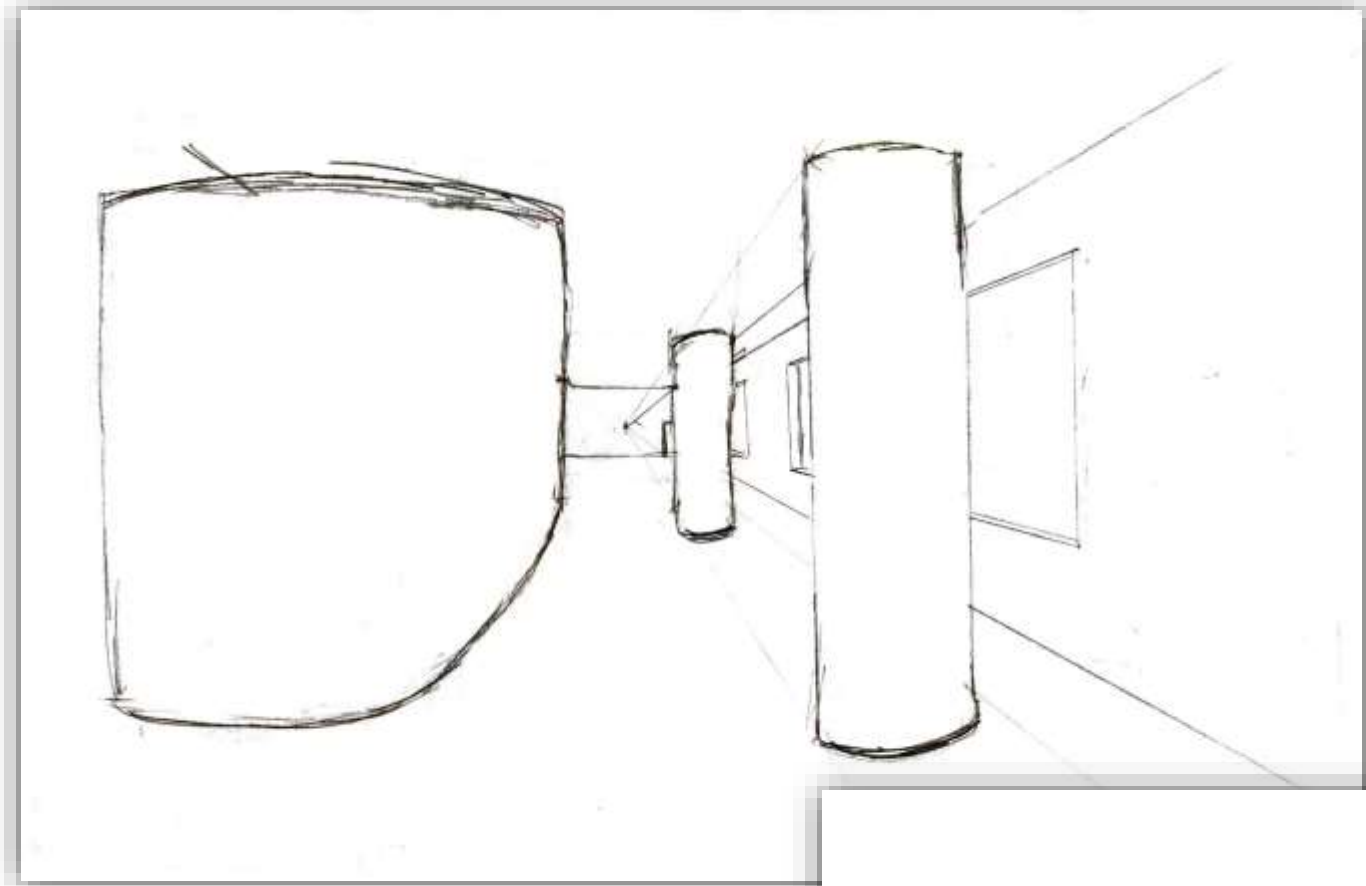
Entry Sketches



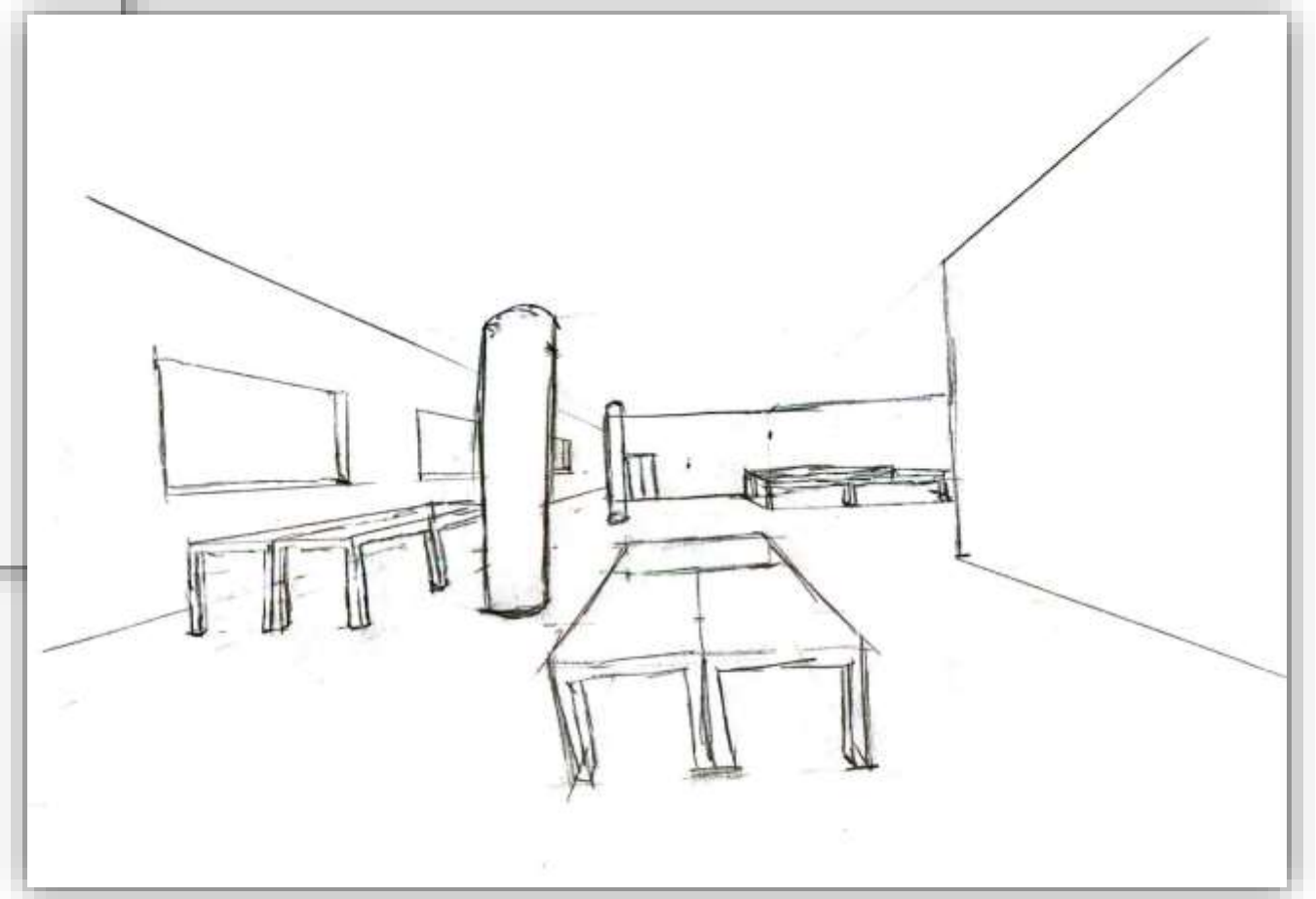
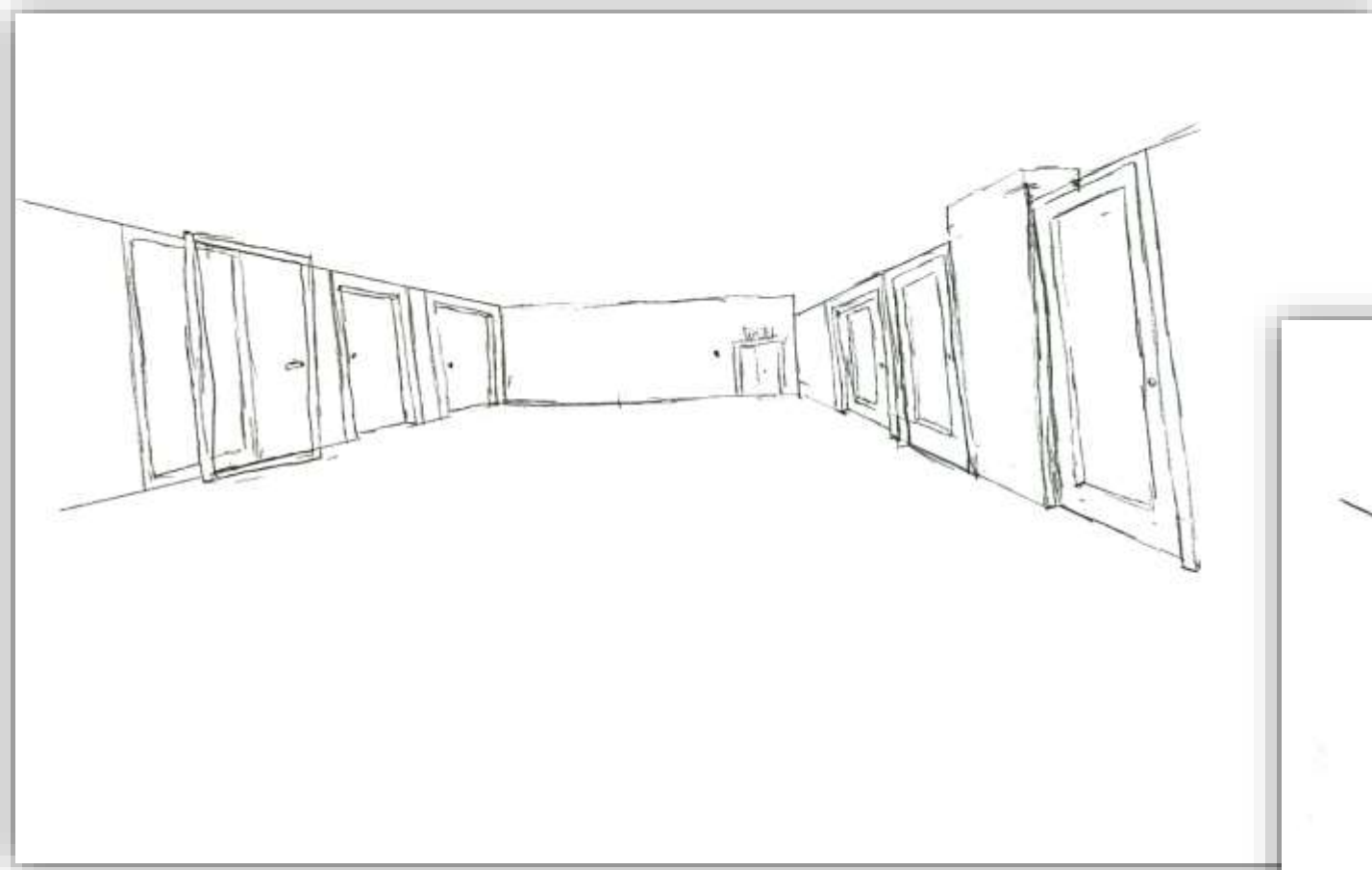
Entry Sketches



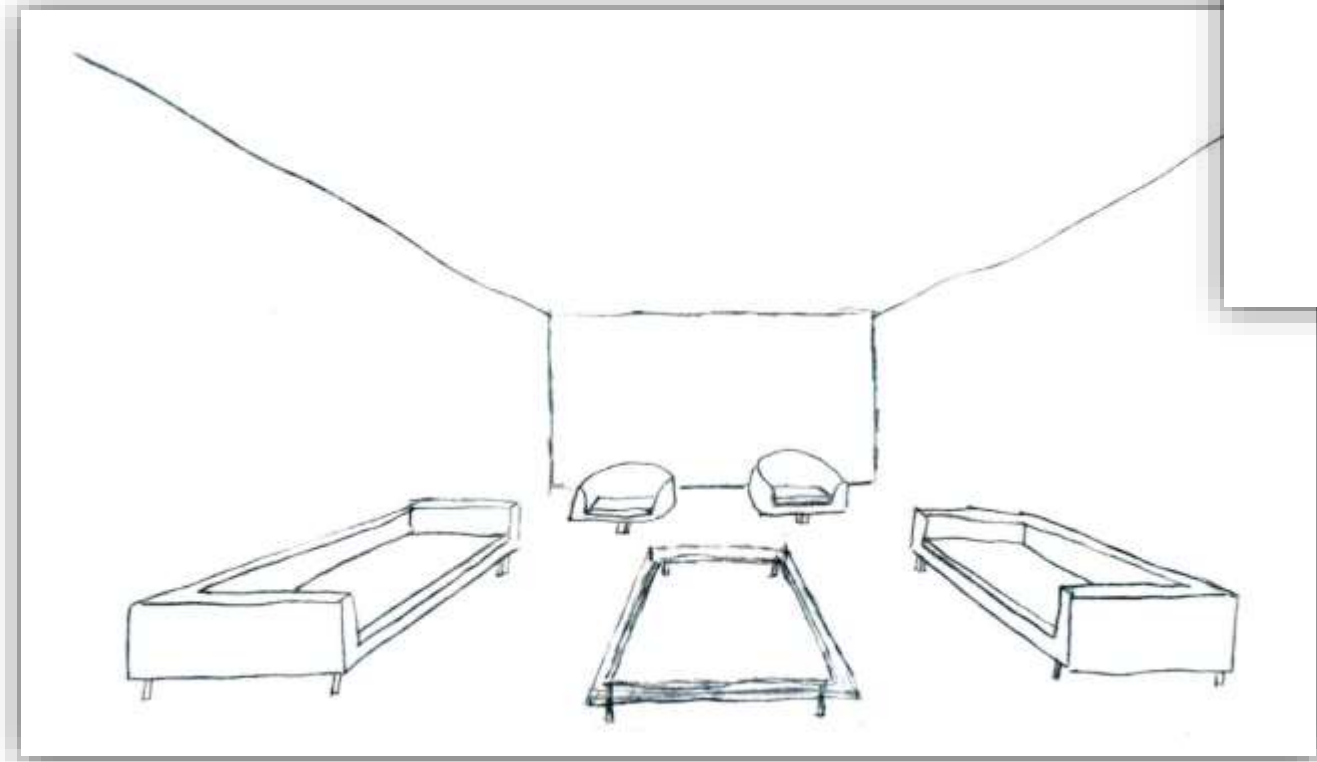
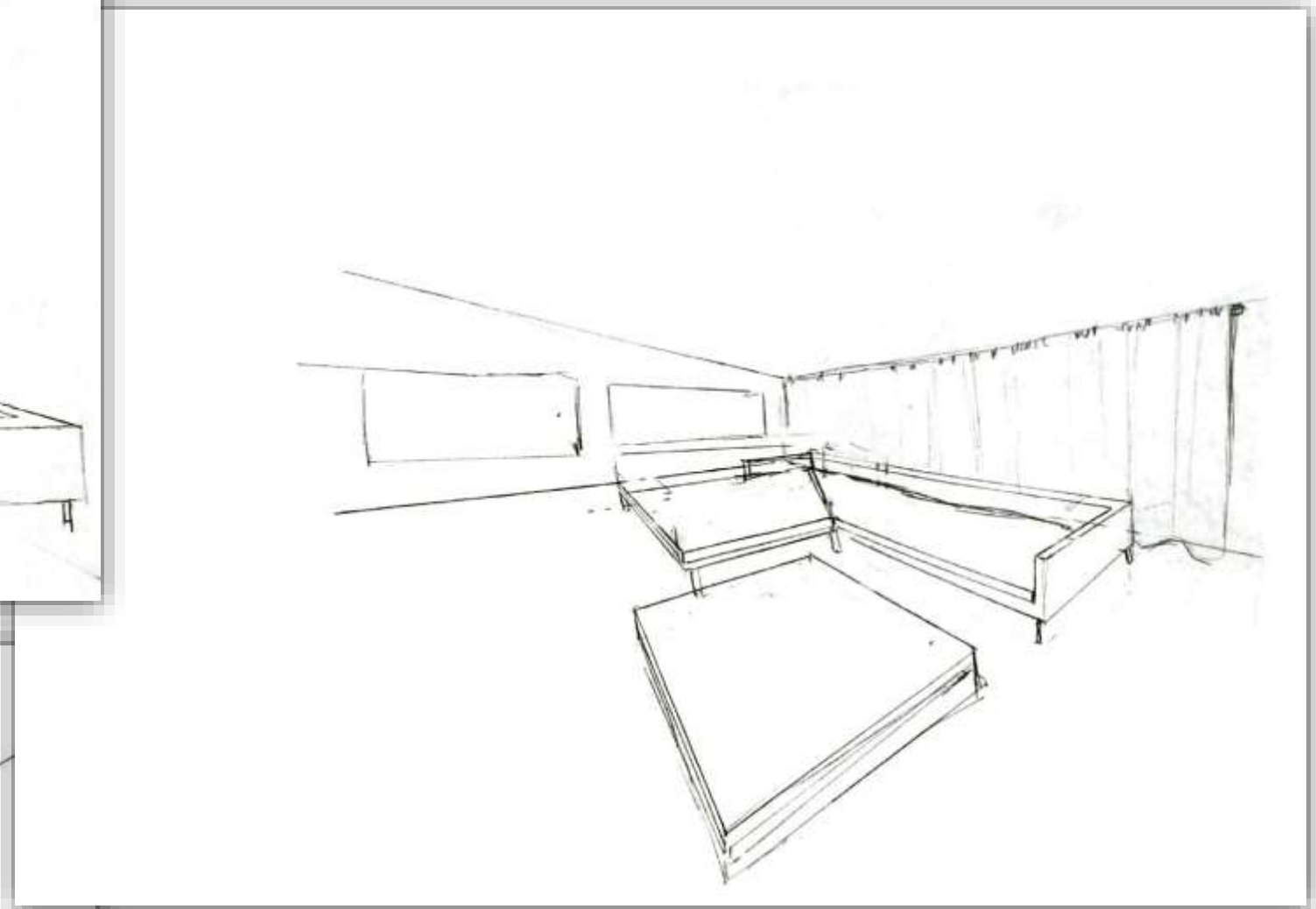
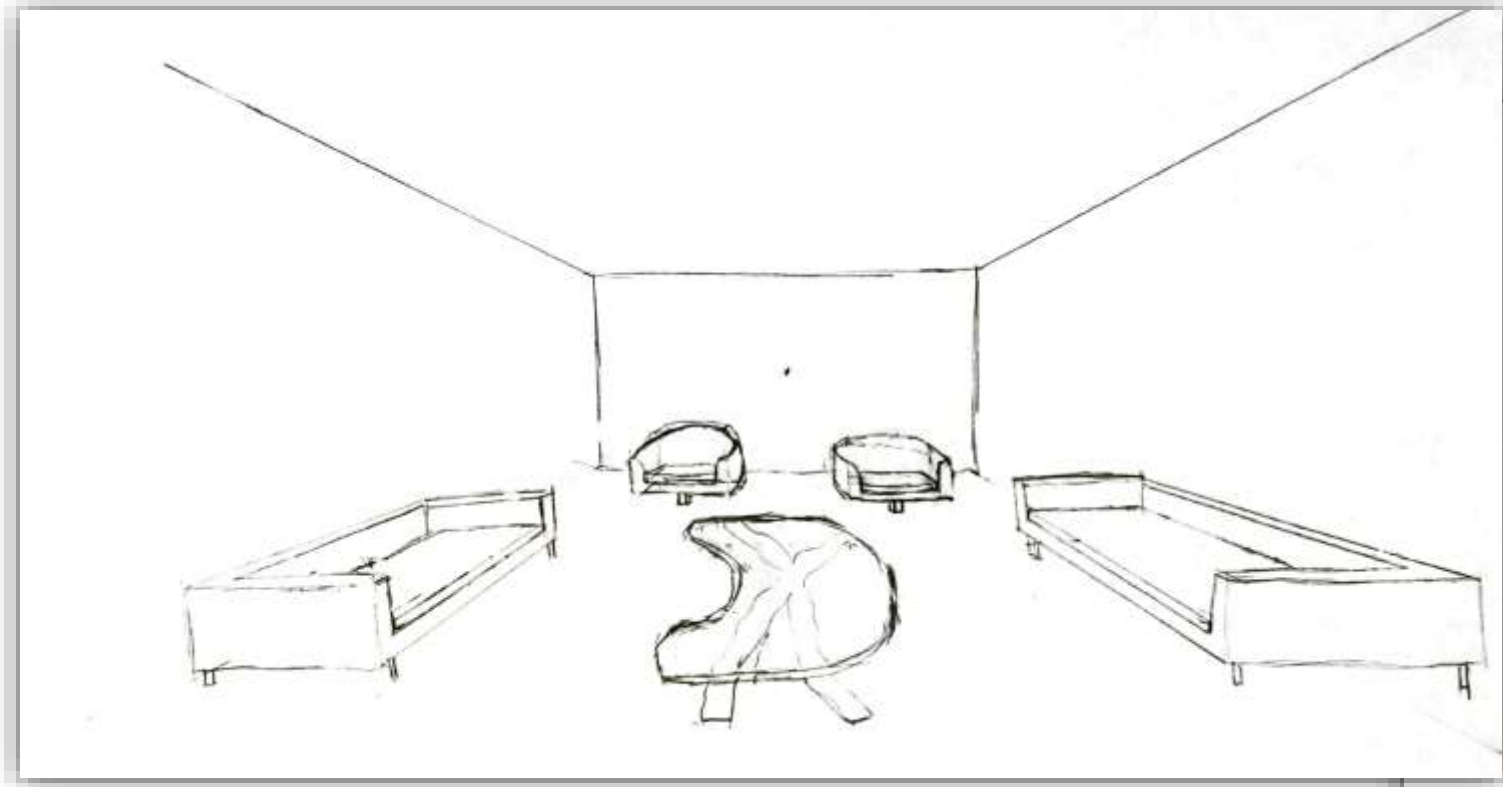
Main Corridor



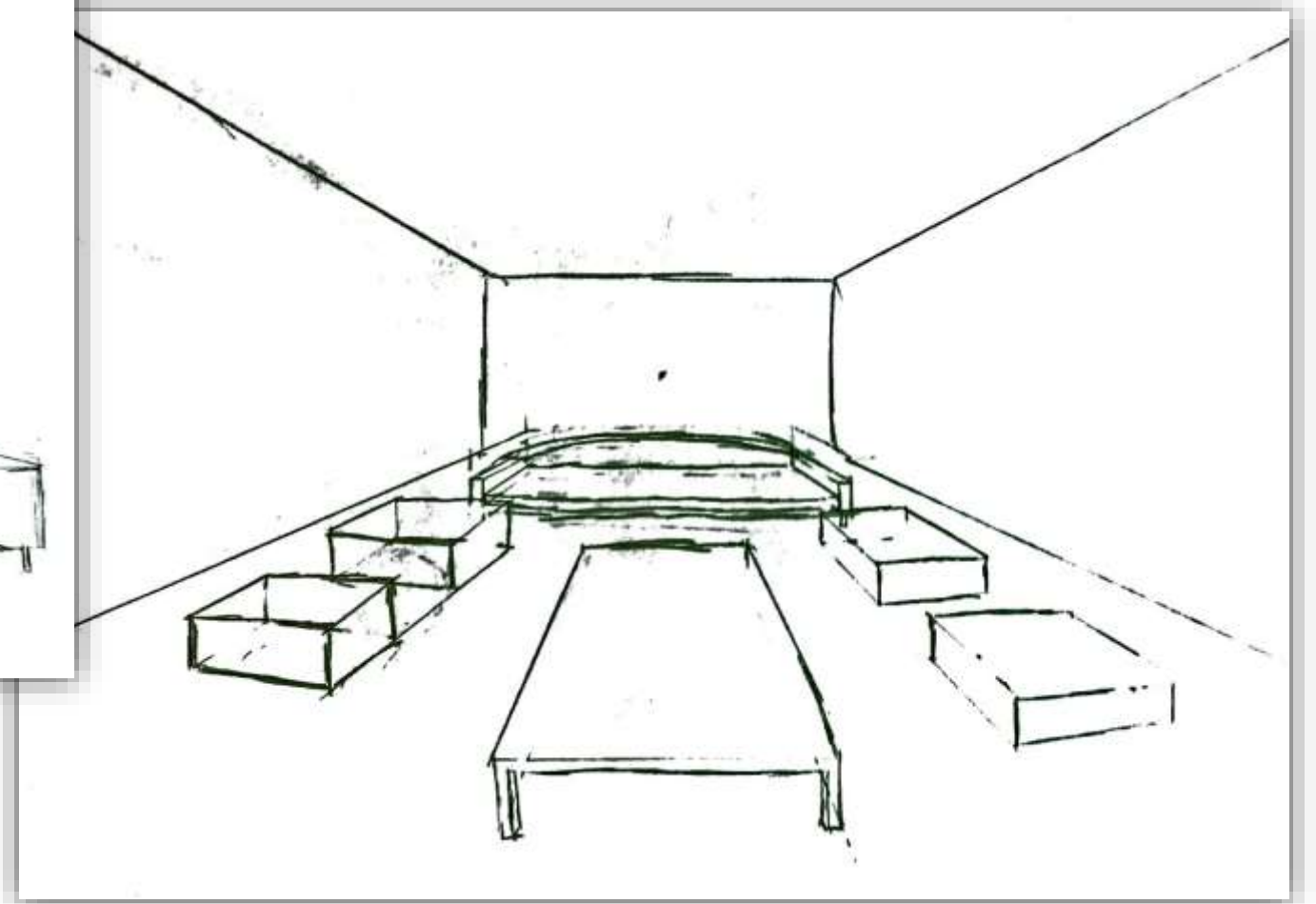
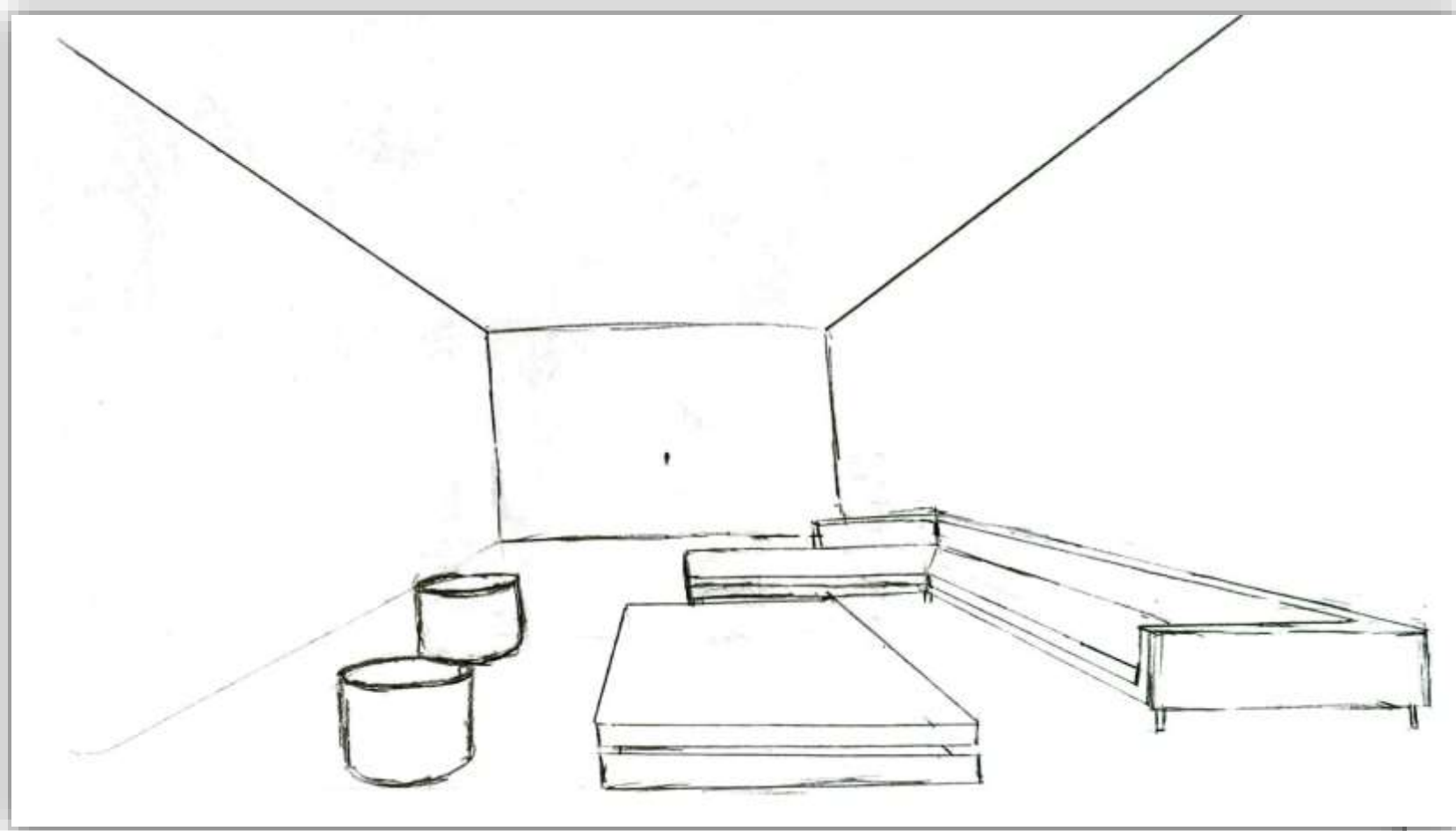
Main Corridor



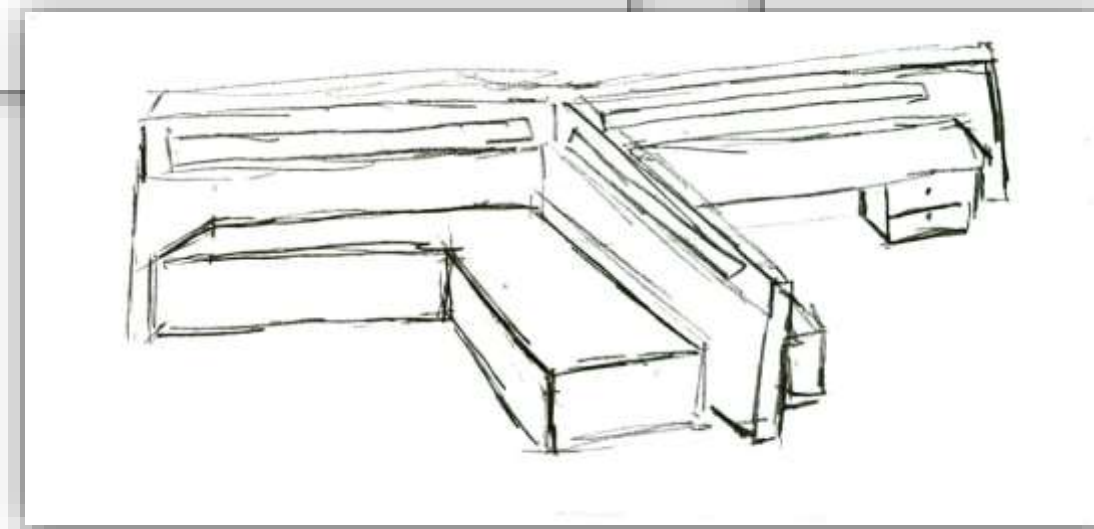
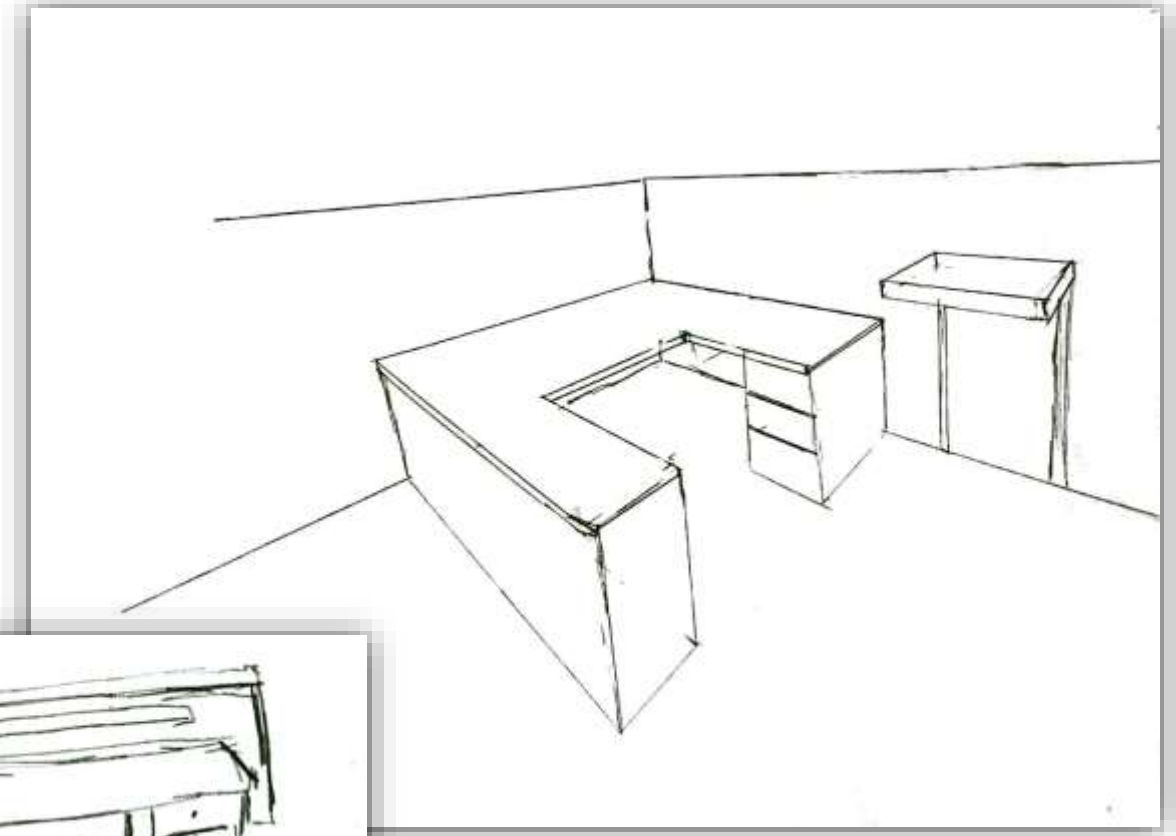
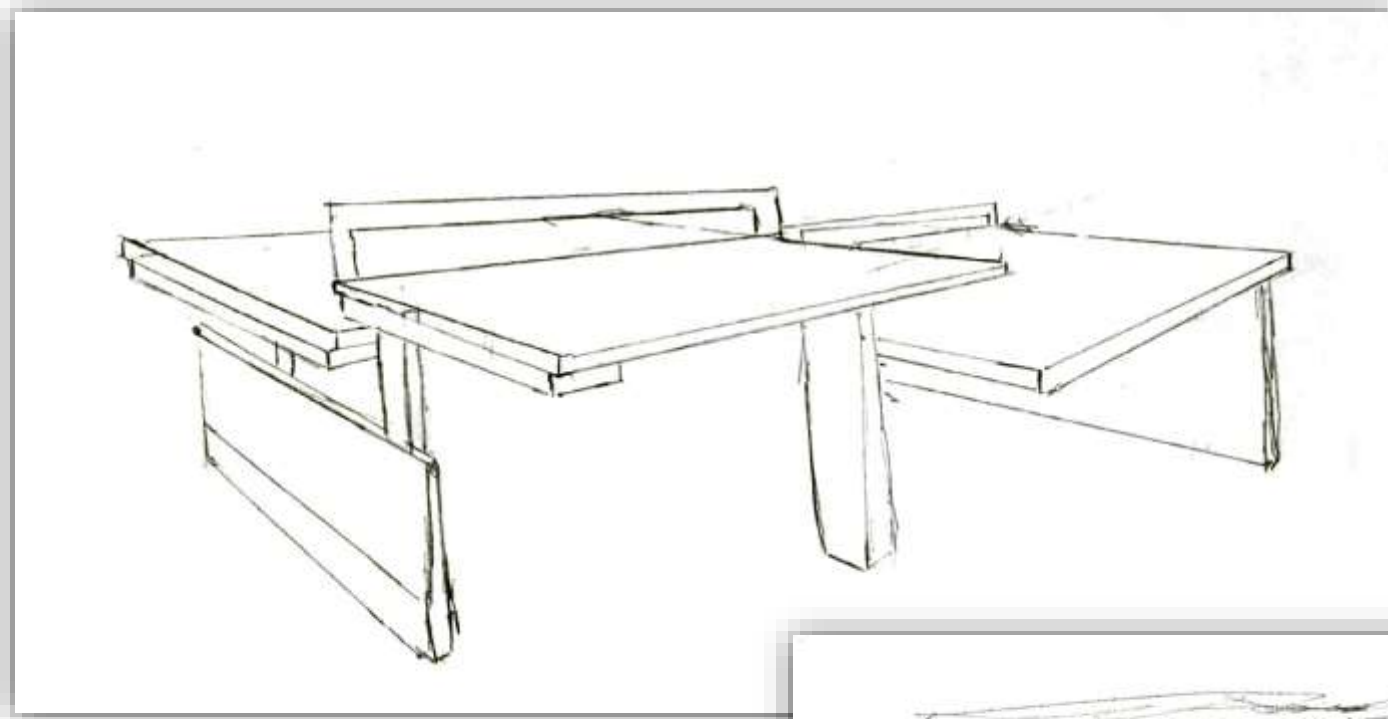
Lounge Sketches



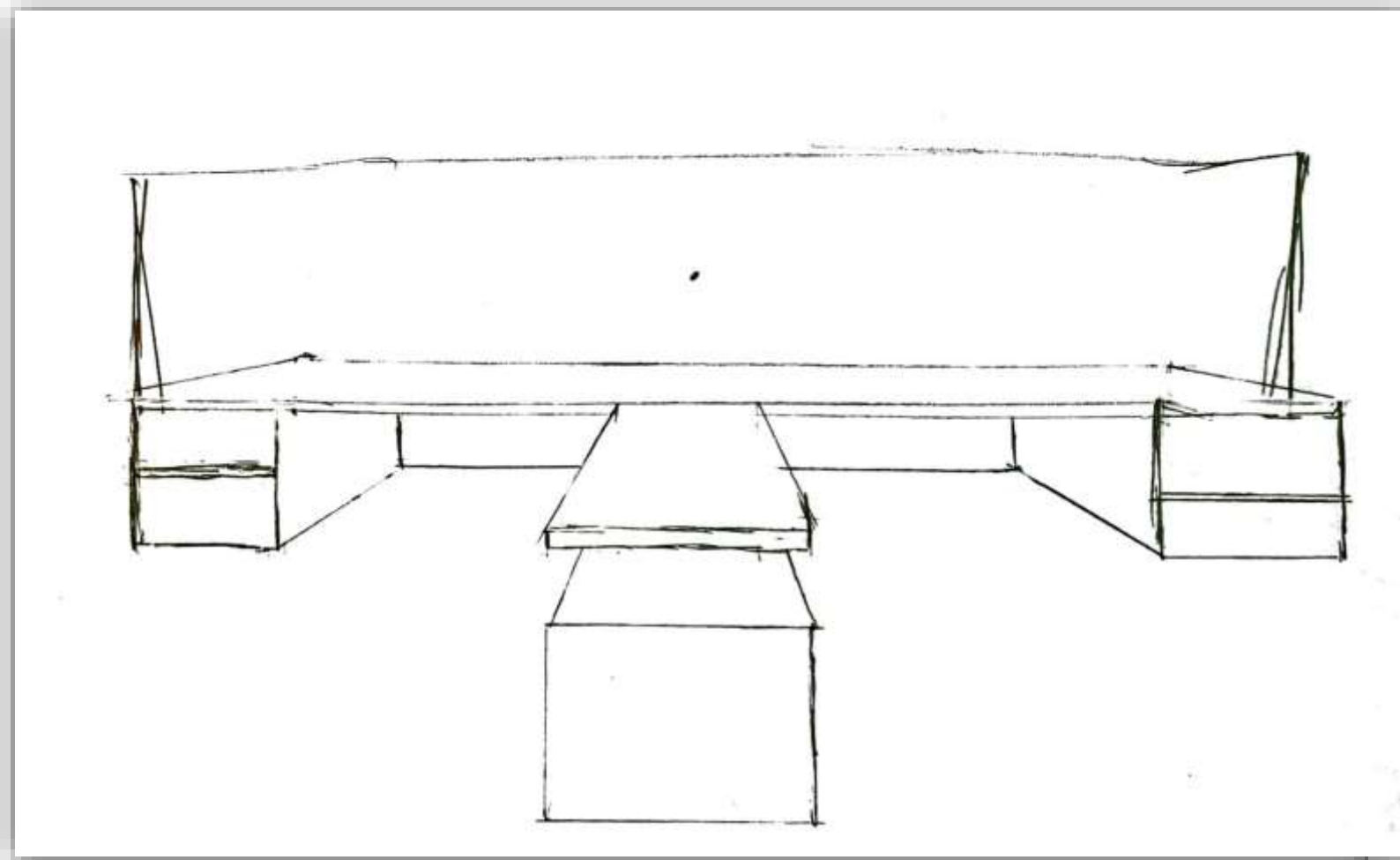
Lounge Sketches



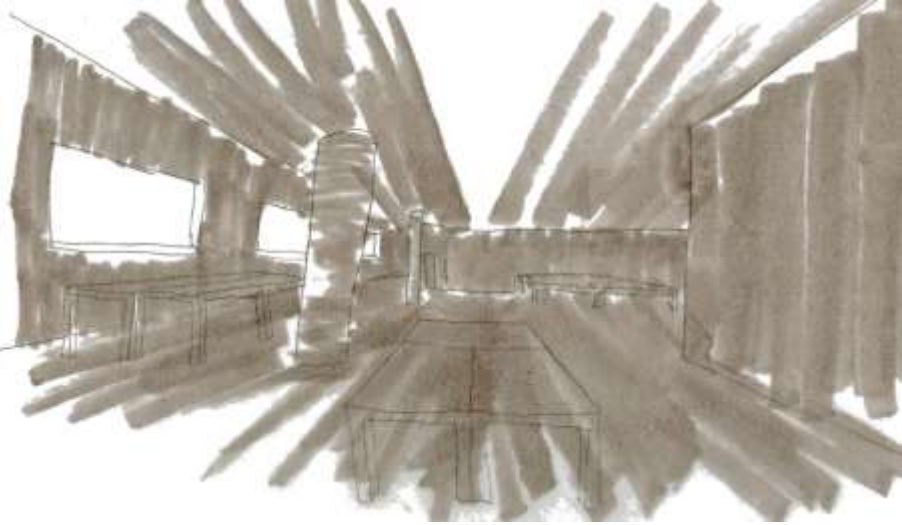
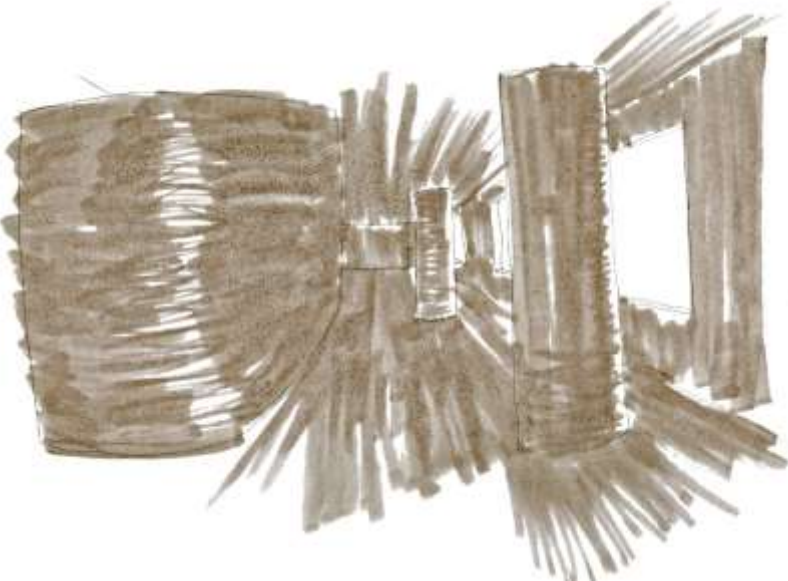
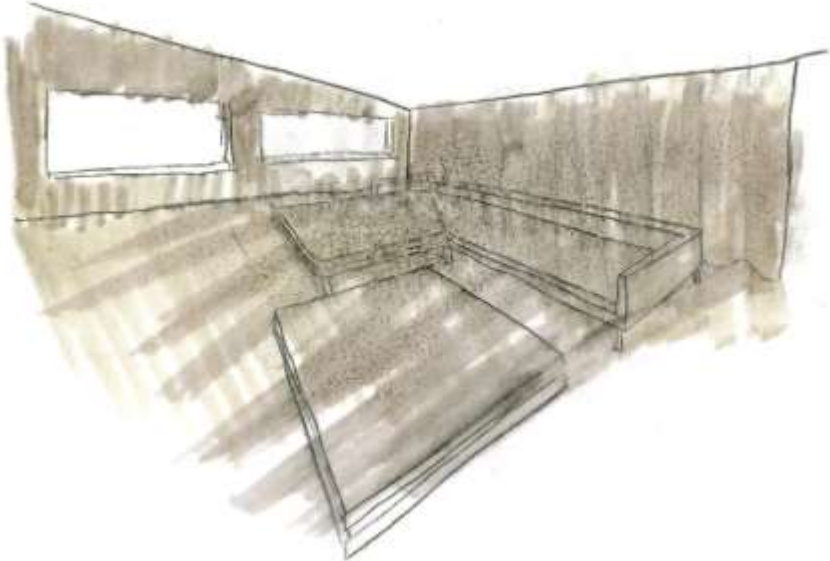
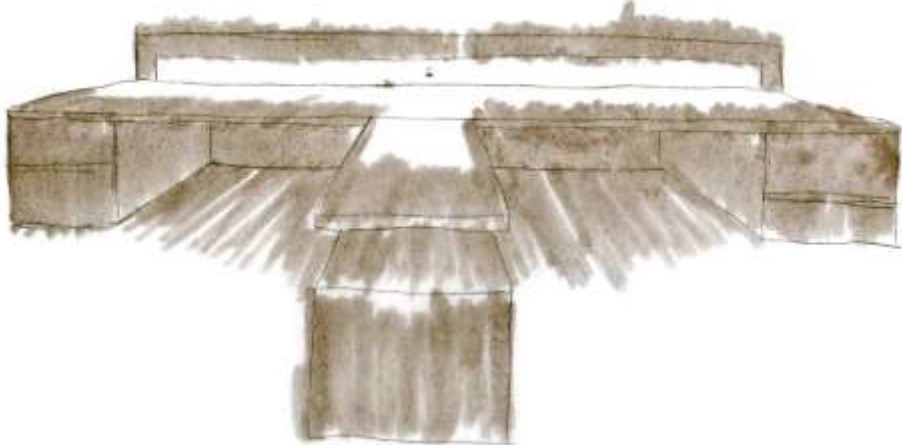
Workstation Sketches



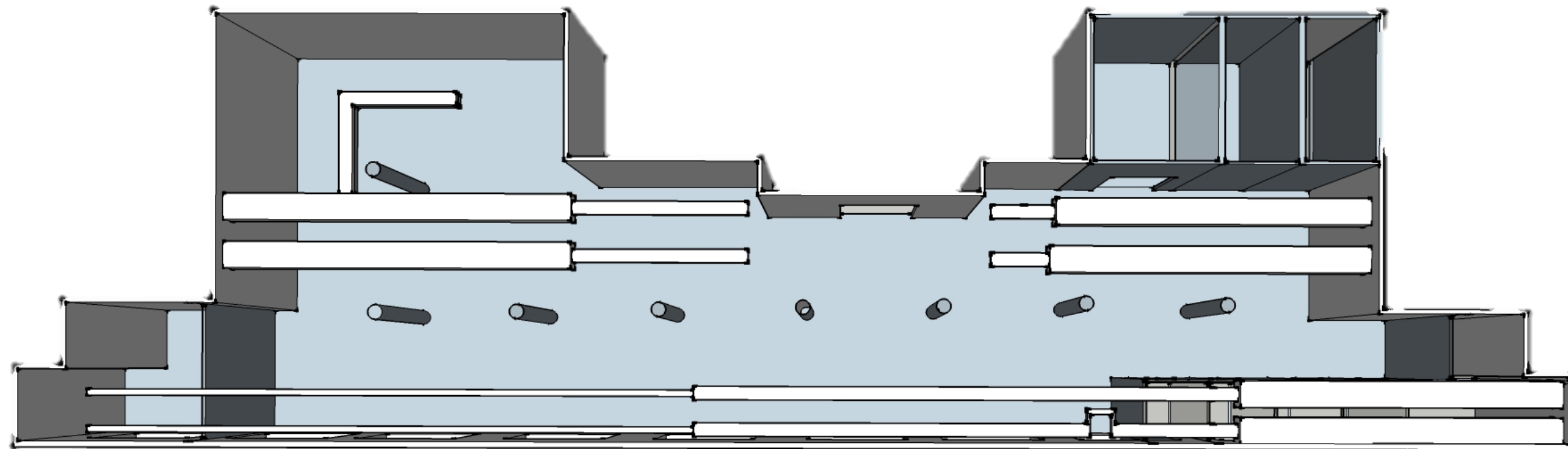
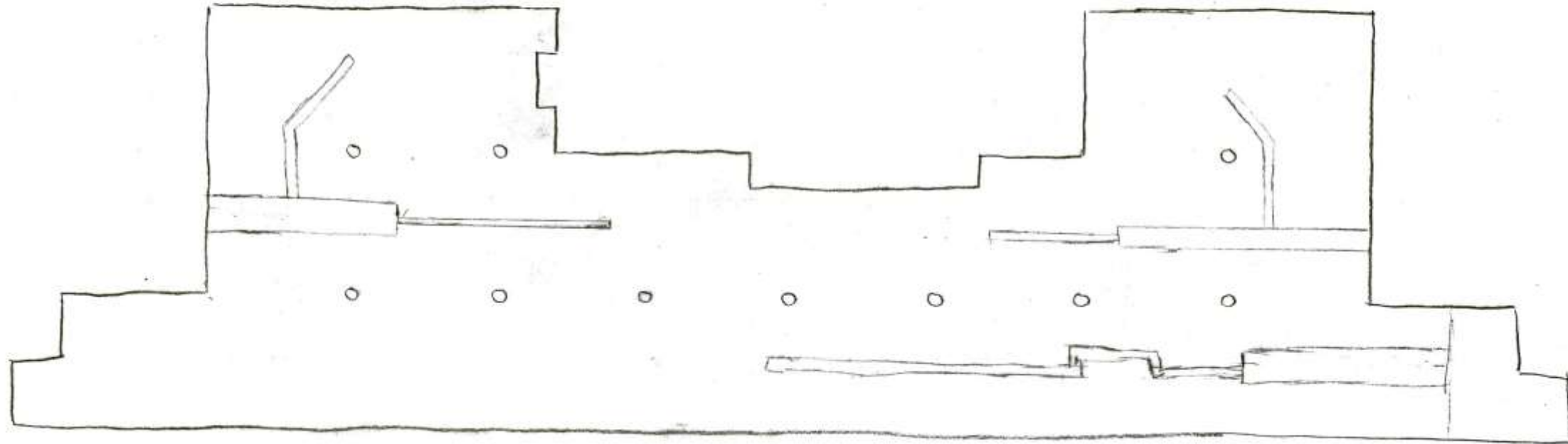
Workstation Sketches



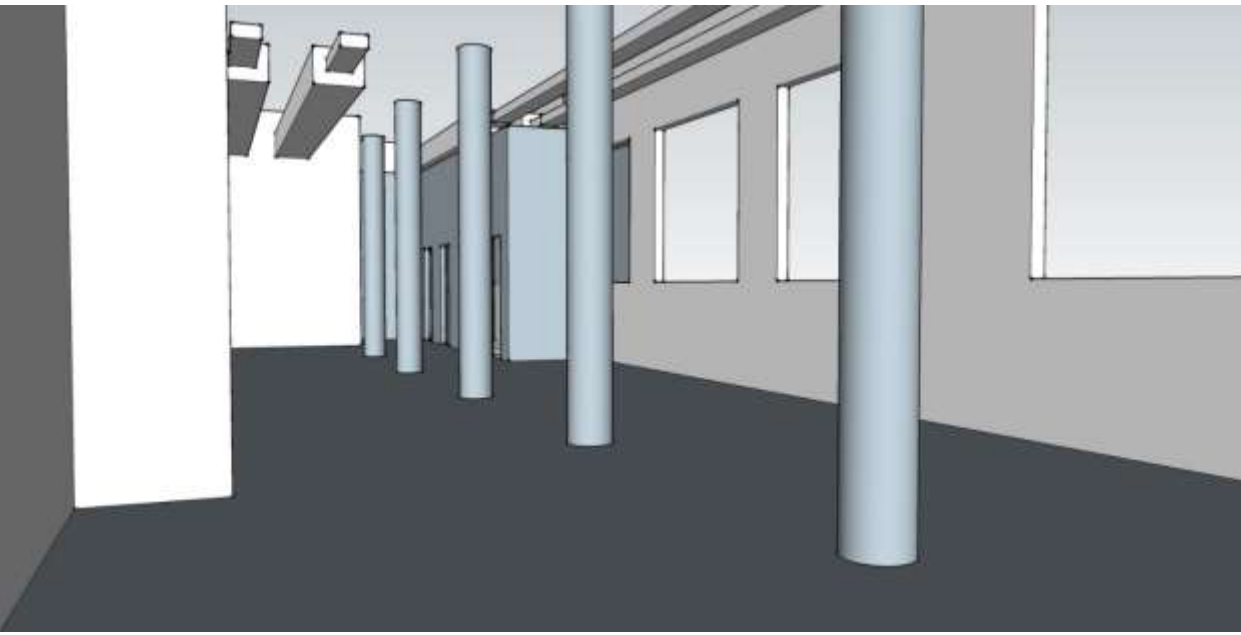
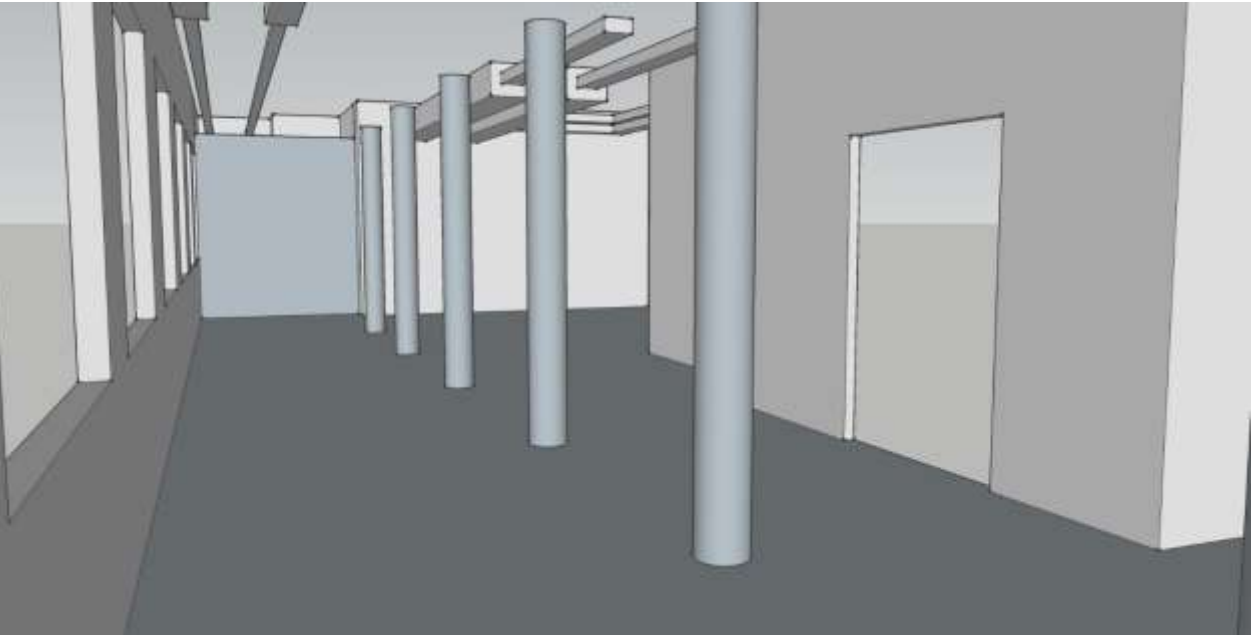
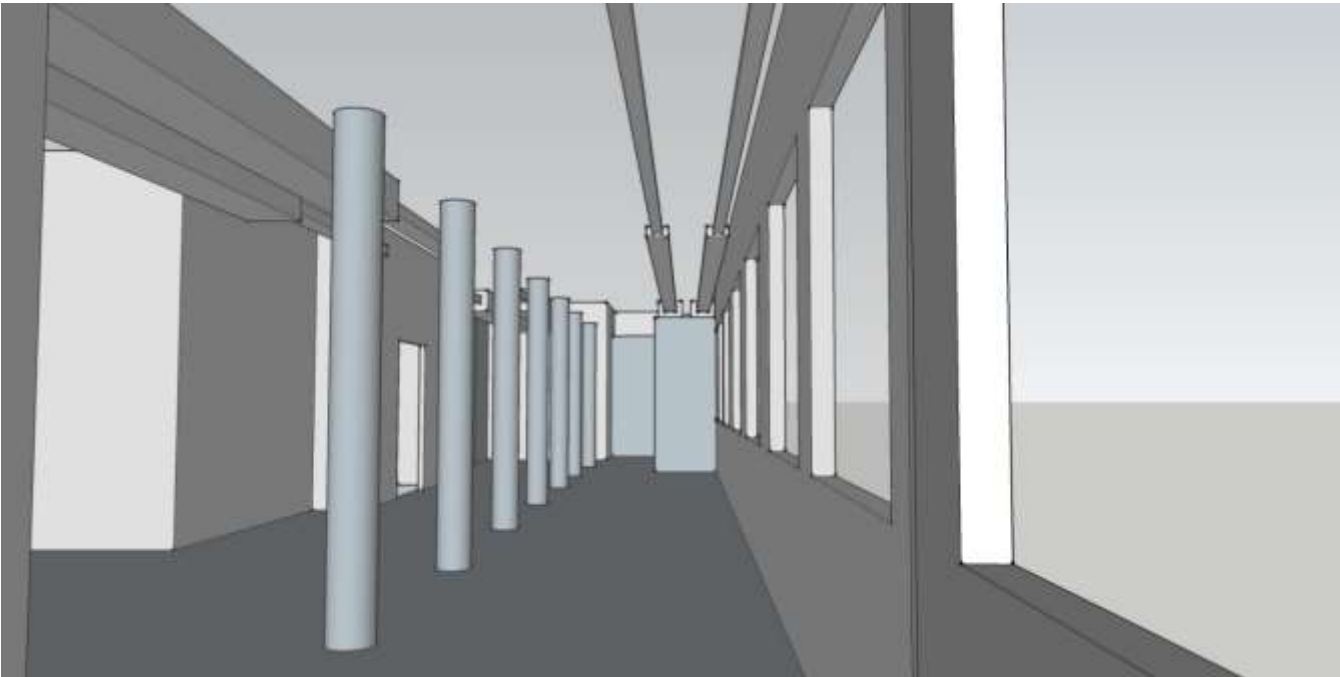
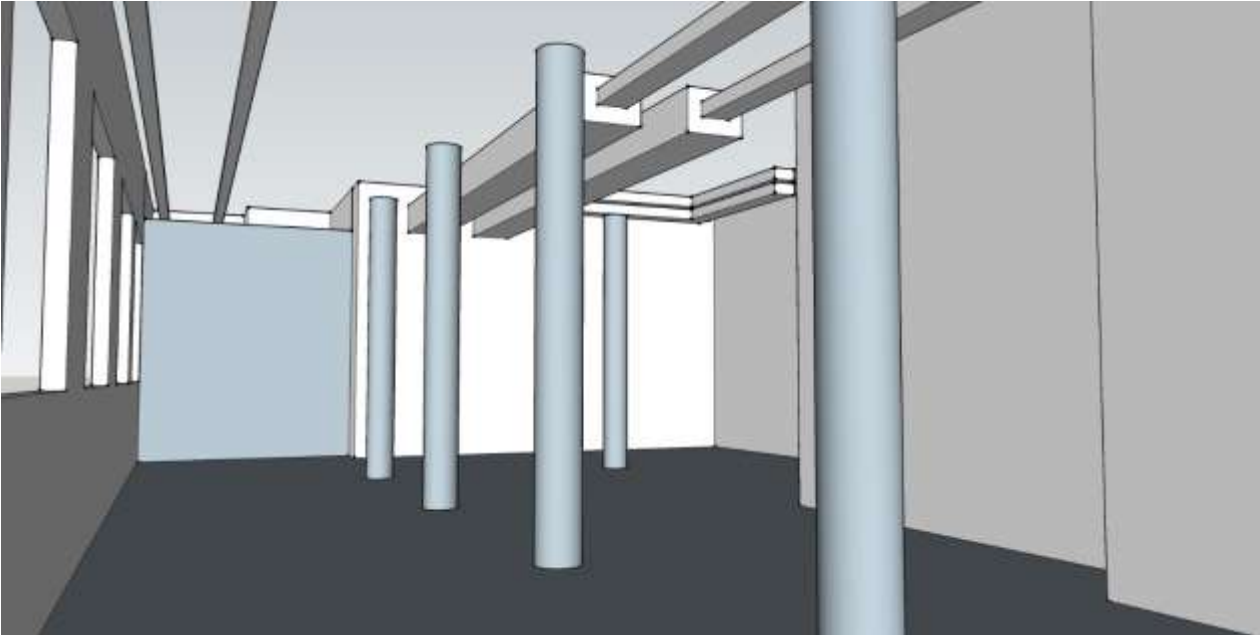
Lighting Overlays



Ductwork



Ductwork



Lighting Model



Sustainability Statement

- Recyclable materials (wood, steel, aluminum)
- Light sensors that turn on 30 minutes before the work day and 30 minutes after the work day
- Textiles will be durable for the duration of its use
- This space is embodied energy
- Luxury vinyl tile that is sustainable and durable



Concept Statement



- Open space for workers
 - A lot of glass walls
 - Vibrant colors
- A lounge for them to think and communicate
 - Lots of light
- Keep the integrity of the space
- Mixture of clean and abstract lines

