The background features a complex geometric composition. On the left, there are large, overlapping triangles in shades of orange, red, yellow, and teal. A large, solid orange triangle points downwards from the top left towards the bottom left. A grey, angular shape is positioned in the upper right, partially overlapping the title. A horizontal band of smaller, multi-colored triangles (orange, teal, yellow, red, blue, green) stretches across the middle of the page. The title 'PORTFOLIO THREE' is centered in the upper half, with 'PORTFOLIO' in a smaller, orange, serif font and 'THREE' in a larger, bold, orange, serif font.

# PORTFOLIO THREE

EDGEWORTH OFFICE DESIGN

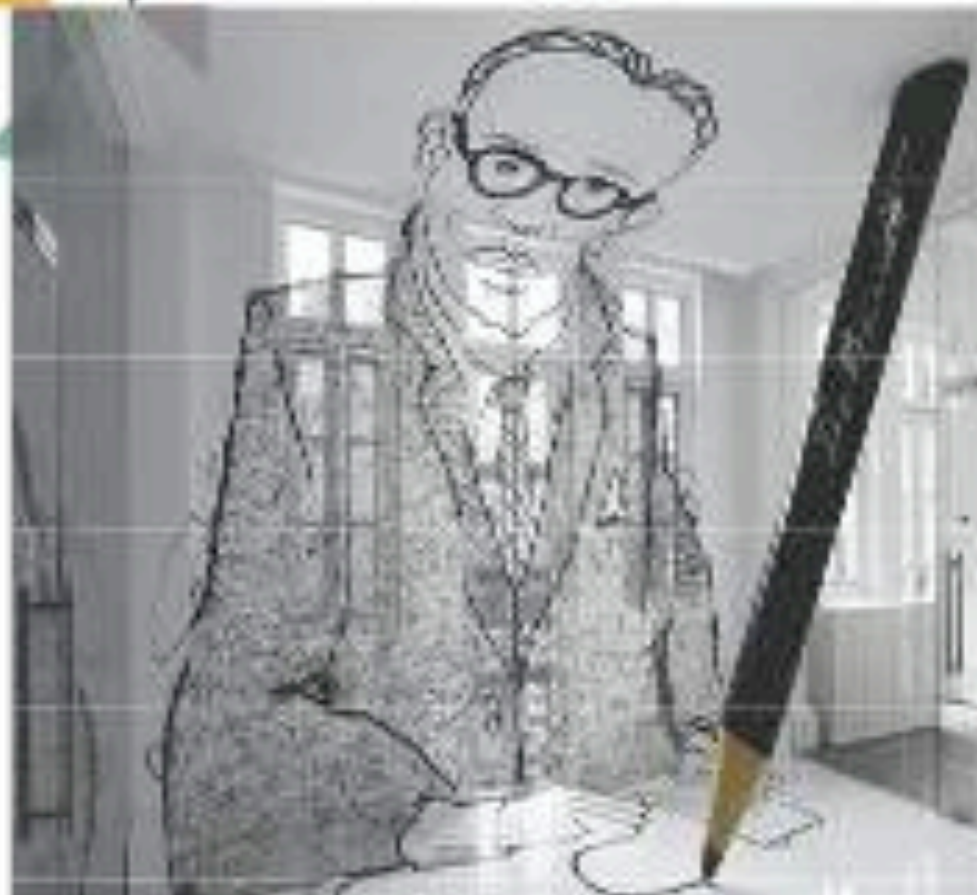
IDSN 3600:SYSTEMS FALL 2014

SARAH BARRINGER



# W RITING ON THE W ALLS

- Expression, ideas, and brainstorming are hastily scribbled onto white walls
  - Inspiring
  - Playful
- Urban style of artistic expression
  - Illustrative line drawings



## STATEMENT OF SUSTAINABILITY STRATEGIES

### ○ MEP

- LIGHTING
  - LED LAMPS
  - LIGHTING SENSORS, TIMERS
  - HIGH-REFLECTANCE SURFACES
  - UTILIZE DAYLIGHT EFFECTIVELY (*MECHO SHADES*)
- APPLIANCES
  - ENERGY-EFFICIENT
  - ENERGY STAR
- BUILDING COMMISSIONING

### ○ SURFACE MATERIALS

- CARPET:
  - THE CARPET & RUG INSTITUTE (CRI) "GREEN LABEL PLUS"
  - RECYCLED AND RECYCLABLE
  - AIDS IN INDOOR AIR QUALITY, ALLERGY PREVENTION
- WALL COVERINGS:
  - LOW-NO VOC PAINT
  - ECO-FRIENDLY ACOUSTICAL COVERINGS
- SURFACES
  - RECYCLED GLASS, PLASTIC
  - LOW EMISSIONS, VOC
  - MOLD RESISTANT
  - EASILY MAINTAINED TEXTILES

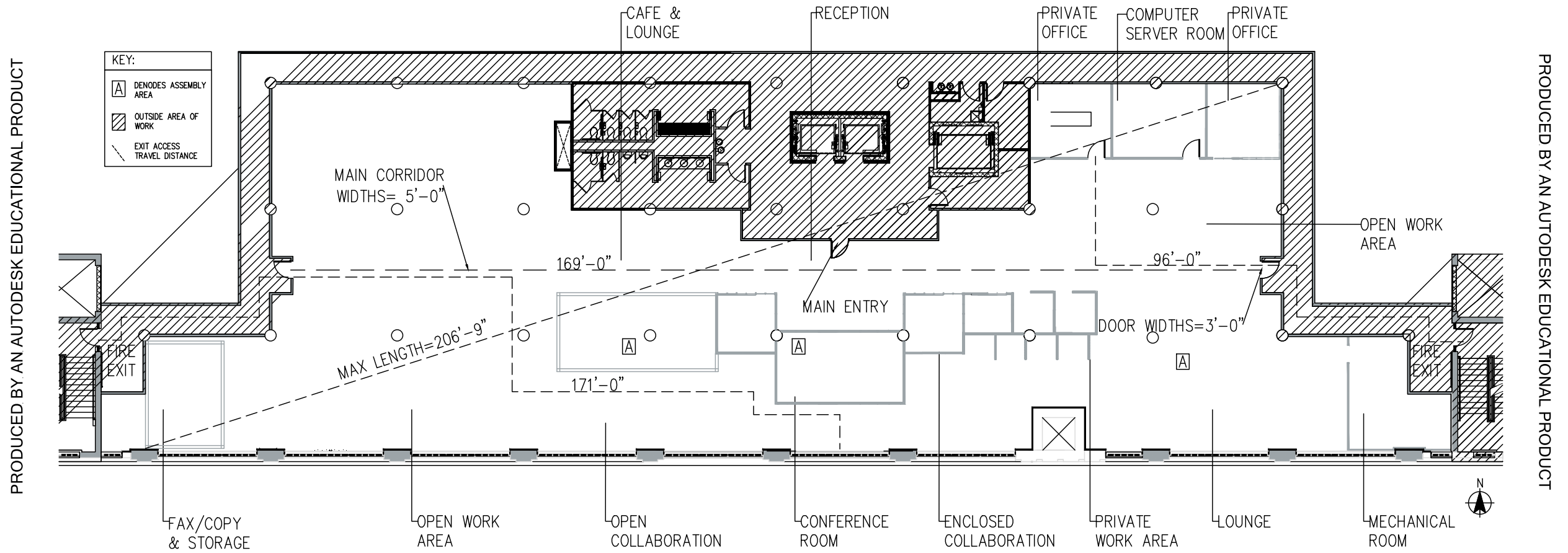
### ○ FURNISHINGS

- RECYCLED CONTENT
- EASY MAINTAINABILITY
- DURABLE
- MULTI-PURPOSE, TRANSITIONAL
- LOCAL





# LIFE SAFETY PLAN



PRODUCED BY AN AUTODESK EDUCATIONAL PRODUCT

PRODUCED BY AN AUTODESK EDUCATIONAL PRODUCT

PRODUCED BY AN AUTODESK EDUCATIONAL PRODUCT

Building Construction and Occupancy									
Construction Type		Sprinklers?		Occupancy Type					
11-B		YES		B					
Exit Requirements: Number and Arrangement of Exits									
Space Designation	# of Exits		Travel Distance		Arrangement: Means of Egress				
	Required	Shown on Plans	Allowable Distance	Actual Distance Shown on Plans	Req'd Distance Between Exits		Actual Distance Shown on Plans		
	2	2	300'-0"	169'-0"	68'-0"		85'-0"		
Notes:									
Use Group or Space Designation	(A)	(B)	Calculated Occupant Load = A/B	©		Exit Width (Inches)			
	Area = Sq. Ft.	Area per Occupant		Egress per Occupant		Required Width = (A/B)xC		Actual Width	
				Stair	Level	Stair	Level	Stair	Level
	10,200	100	102	0.3	0.2	30.6"	20.4"	61"	120"



# LIGHTING ANALYSIS

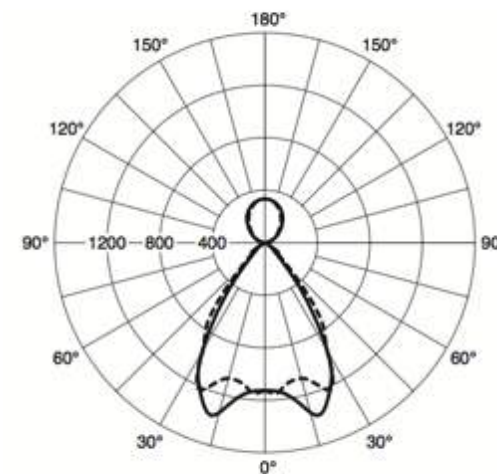
$$\begin{aligned}
 \text{Maintained FC} &= \frac{(\text{Number of Lamps}) \times (\text{Initial Lamp Lumens}) \times \text{LLF} \times \text{CU}}{\text{Area}} \\
 &= \frac{(2) \times (2,500) \times .85 \times 41}{33169} \\
 &= \frac{(5,000) \times (34.85)}{169} \\
 &= \boxed{1,031.065}
 \end{aligned}$$

$$\begin{aligned}
 \text{RCR} &= \frac{5(H)(L+W)}{L \times W} \\
 &= \frac{5(13)(13+13)}{13 \times 13} \\
 &= \boxed{10}
 \end{aligned}$$

**Coefficients Of Utilization - Zonal Cavity Method**  
Effective Floor Cavity Reflectance 0.20

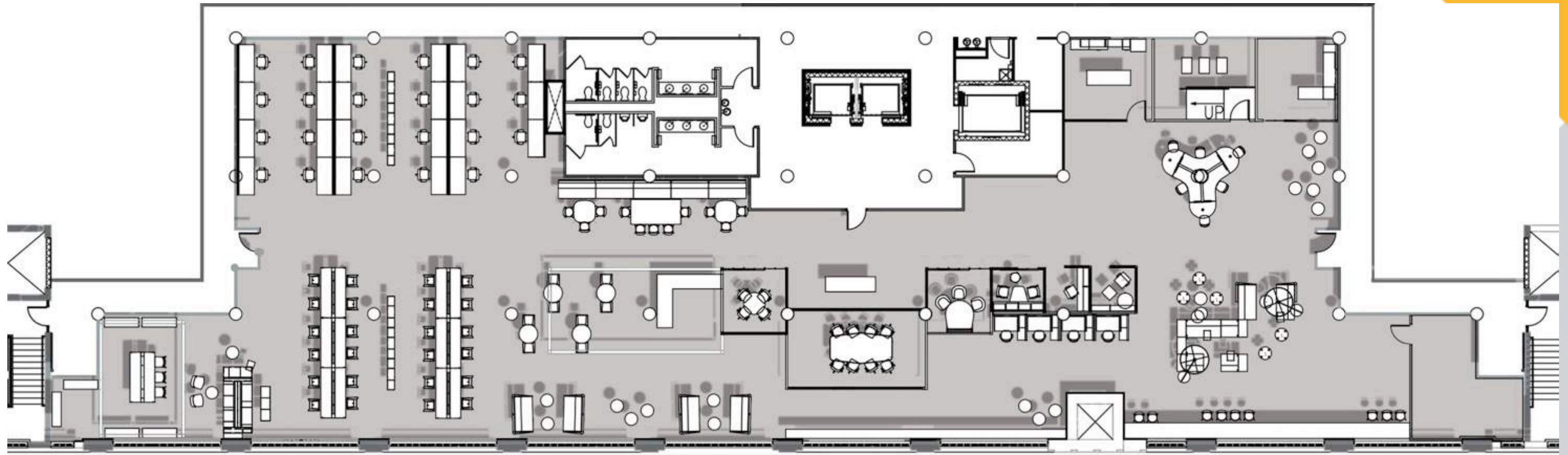
RC	80				70				50				30			
	RW	70	50	30	10	70	50	30	10	50	30	10	50	30	10	
0	112	112	112	112	106	106	106	106	95	95	95	85	85	85		
1	105	102	99	96	100	97	94	92	87	86	84	79	78	76		
2	98	93	88	84	93	88	84	81	80	77	75	73	71	69		
3	92	84	79	74	87	81	76	71	74	70	67	68	64	62		
4	86	77	71	66	82	74	68	64	68	63	60	62	59	56		
5	80	71	64	59	76	68	62	57	63	58	54	58	54	51		
6	75	65	58	53	72	62	56	52	58	53	49	54	50	46		
7	70	60	53	48	67	58	51	47	54	48	45	50	46	42		
8	66	55	48	44	63	53	47	43	50	45	41	46	42	39		
9	62	51	44	40	59	49	43	39	46	41	37	43	39	36		
10	58	47	41	37	56	46	40	36	43	38	34	40	36	33		

**Candela Distribution**



Vertical Angle	Horizontal Angle			Zonal Lumens
	0°	45°	90°	
0°	1125	1125	1125	
5°	1138	1142	1149	108.6
15°	1340	1141	1069	336.7
25°	1191	1369	1216	567.6
35°	602	1095	776	529.1
45°	143	324	239	217.2
55°	125	39	56	52.5
65°	2	2	1	3.9
75°	0	0	0	0.0
85°	0	0	0	0.0
90°	0	0	0	

# FURNITURE FLOOR PLAN

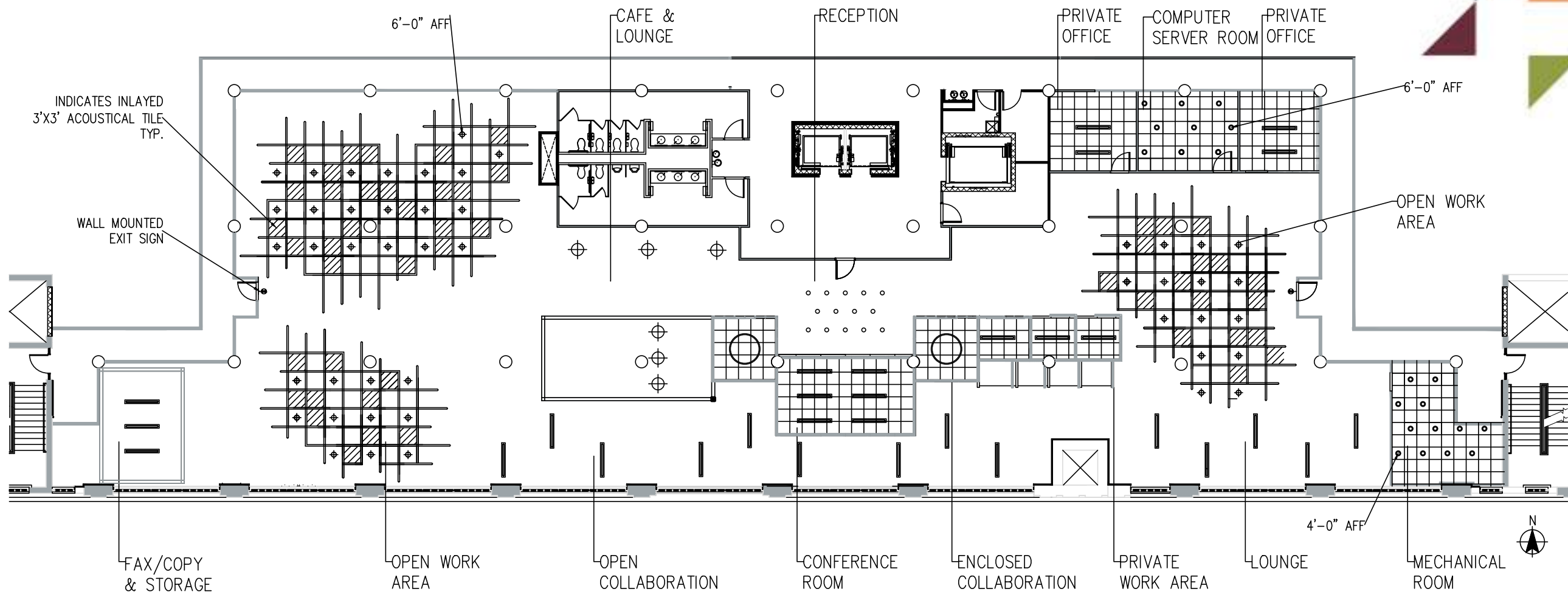




# RCP



PRODUCED BY AN AUTODESK EDUCATIONAL PRODUCT



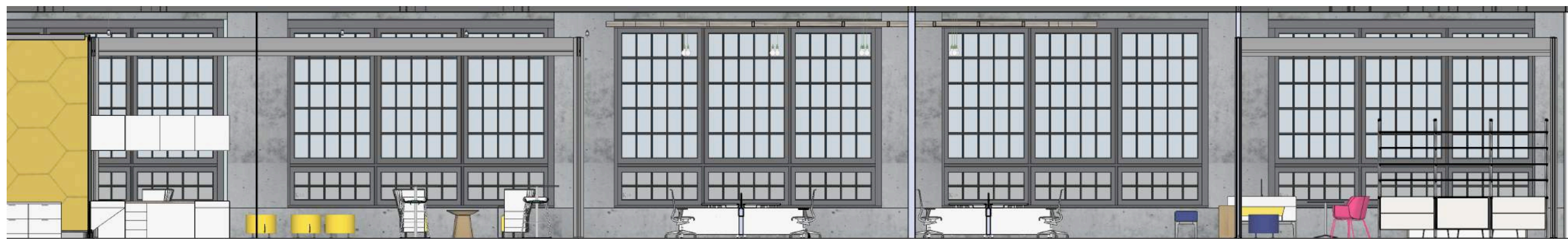
PRODUCED BY AN AUTODESK EDUCATIONAL PRODUCT

LIGHTING LEGEND	
○	RECESSED LIGHT
◦	SUSPENDED LED TUBE
⊕	EXIT SIGN
⊕	SMALL PENDANT
⊕	LARGE PENDANT
⊕	VERTICAL LED PENDANT
○	CIRCULAR LED PENDANT





# EAST-WEST SECTION



# RECEPTION AREA PERSPECTIVE



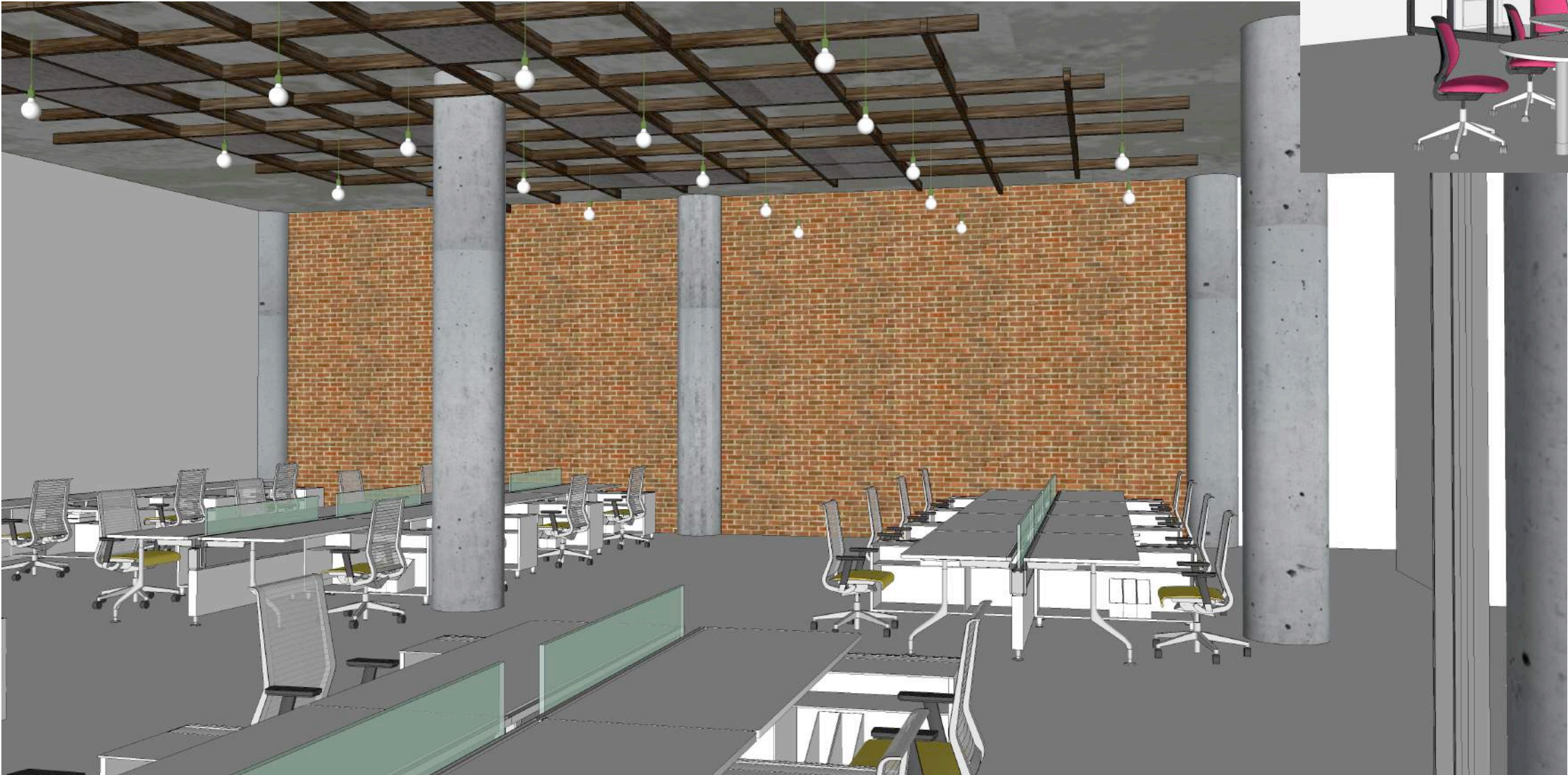


# RECEPTION FF&E





# OPEN WORK AREAS





# LOUNGE

