

PORTFOLIO THREE

FINAL SCHEMATIC DESIGN

Danielle S. Chapman
IDSN 3600 ~ Fall 2014
Commercial II ~ Systems
Professor Charles Gustina

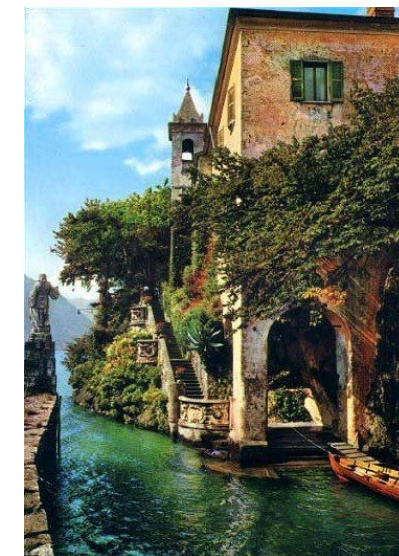
CONCEPT & INSPIRATION

Inspiring the Space's Design



OUR ORIGINALITY IS DERIVED FROM OUR OBSERVATIONS

- INSPIRATION FROM TRAVELS.
- HOW PAST EXPERIENCES EFFECT OUR PRESENT DESIGNS.
- CREATIVITY INDUCED BY COLORS, TEXTURES, AND PATTERNS.
- CLEAN WITH SPLASHES OF CRAZY.
- INSPIRED BECAUSE OF RICHMOND ONCE BEING A CENTRAL TRADE CENTER IN THE US



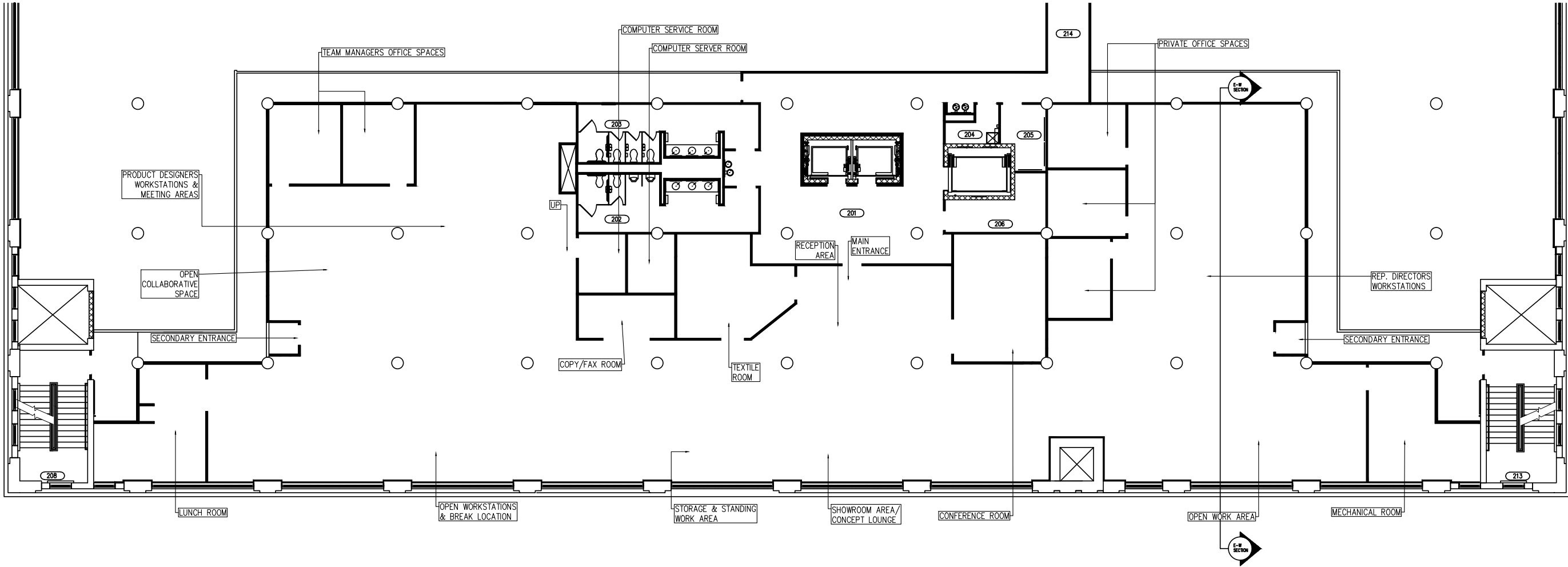


STATEMENT OF SUSTAINABILITY STRATEGIES

- Products used to create this design space, will use the least amount of natural resources as possible.
- This space - being designed from an older existing building - is being adapted to be used in a different way than originally planned.
- In order to make this design authentic, while minimizing resources from the environment, hand crafted local products will be used as well as refurbishing old items/ products that were originally brought into the area by trade, yet are not being used anymore.
- The space will be designed where the tenant space will be adaptable to others, for future tenants
- Creating the space to be adaptable to other/new tenants cuts down on future costs of redesign of the space
- As a designer, I will strive to become aware of the environmental impacts my design has, as well as try and minimize such impacts.

ROOM LABELS

NOT TO SCALE



LUMEN/ZONAL CAVITY CALCULATIONS FOR PRIVATE OFFICE

Maintained fc =

[(Number of Lamps) x (Initial Lamp Lumens) x LLF X CU] / Area

$$\text{Maintained FC} = [(8) \times (4100) \times 0.85 \times 39] / 163 = 32,800 \times 0.85 \times 39 / 163 = 1,087,320 / 163 = \mathbf{6,670.674}$$

RCR = [5(H) (L+W)] / [L x W]

$$\text{RCR} = [5(6)(13.45+12.167)] / [13.45 \times 12.167] = 5(6)(25.625) / 163.74 = 768.75 / 163.74 = \mathbf{4.694}$$

LLF = LLD x LDD

$$\text{LLF} = 0.85 \times 1 = \mathbf{0.85}$$

PHOTOMETRICS DATA

ML5S LED, 39W, 3500K

Efficacy = 106lm/W

Luminance Data (cd/sq.m)

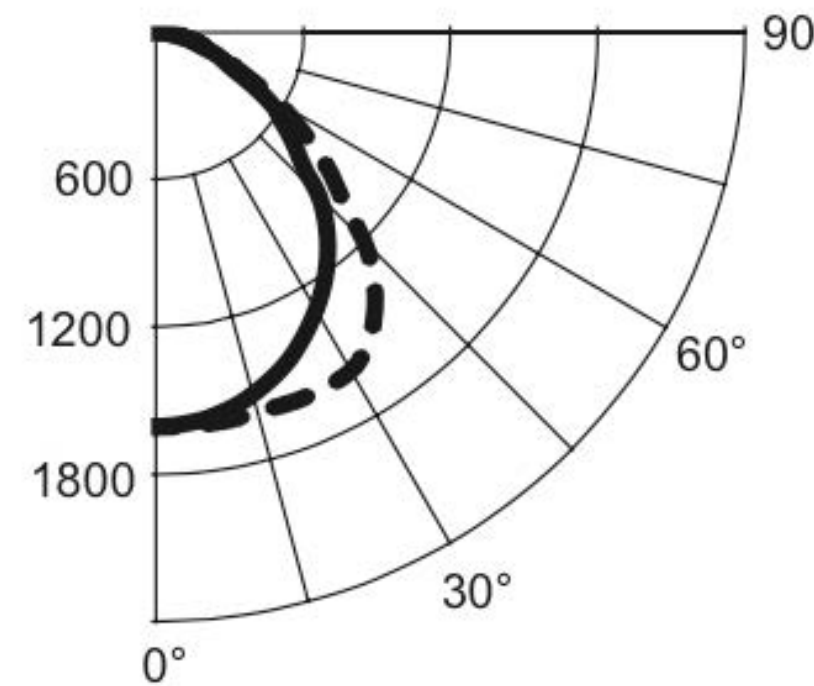
Angle In Degrees	Average 0-Deg	Average 45-Deg	Average 90-Deg
45°	4229	4782	5416
55°	3459	3398	4235
65°	2530	2740	2871
75°	2042	2080	2440
85°	1076	1711	2195

Coefficients Of Utilization - Zonal Cavity Method

Effective Floor Cavity Reflectance 0.20

RC	80				70				50			30			10			0
RW	70	50	30	10	70	50	30	10	50	30	10	50	30	10	50	30	10	0
0	119	119	119	119	116	116	116	116	111	111	111	106	106	106	102	102	102	100
1	110	105	102	98	107	103	100	96	99	96	93	95	93	91	92	90	88	86
2	101	93	87	81	98	91	85	81	88	83	79	84	80	77	81	78	75	73
3	92	83	75	69	90	81	74	68	78	72	67	75	70	66	73	68	65	63
4	85	74	65	59	83	72	65	59	70	63	58	68	62	57	65	60	56	54
5	78	66	58	51	76	65	57	51	63	56	51	61	55	50	59	54	49	47
6	73	60	51	45	71	59	51	45	57	50	45	55	49	44	54	48	44	42
7	67	54	46	40	66	54	46	40	52	45	40	51	44	39	49	44	39	37
8	63	50	42	36	61	49	41	36	48	41	36	47	40	35	45	40	35	33
9	59	46	38	32	57	45	37	32	44	37	32	43	37	32	42	36	32	30
10	55	42	34	29	54	42	34	29	41	34	29	40	33	29	39	33	29	27

Candela Distribution



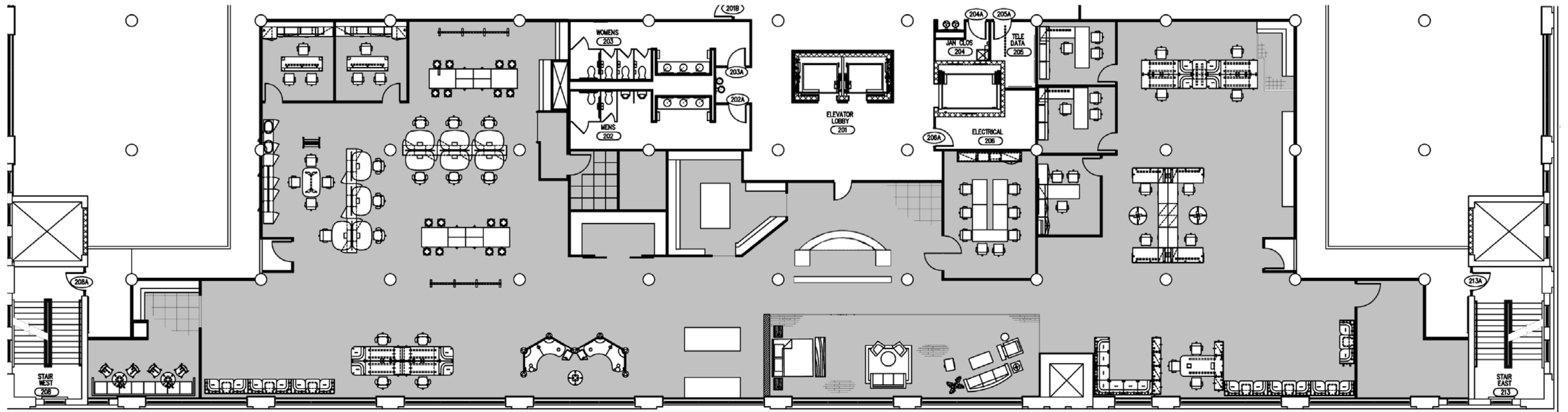
Vertical Angle	Horizontal Angle			Zonal Lumens
	0°	45°	90°	
0°	1606	1606	1606	
5°	1595	1602	1608	152.5
15°	1526	1565	1602	442.7
25°	1395	1506	1605	693.5
35°	1203	1380	1521	854.1
45°	935	1057	1197	808.2
55°	620	609	759	588.2
65°	334	362	379	368.6
75°	165	168	197	194.1
85°	29	47	60	52.0
90°	0	2	3	

CREDIT:

http://www.zumtobel.us/PDB/Ressource/SpecSheet/en/ML5_LED_FIF_752.pdf

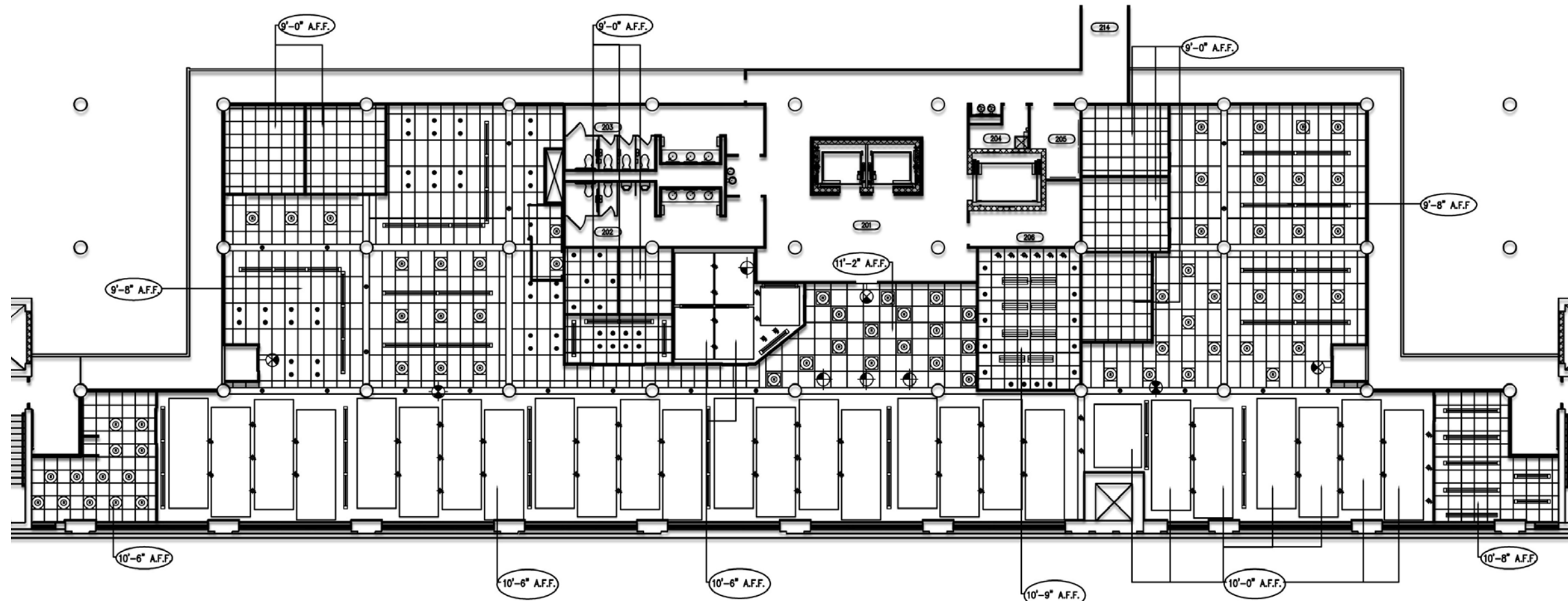
RENDERED FURNITURE PLAN

NOT TO SCALE



RENDERED REFLECTED CEILING PLAN

NOT TO SCALE



REFLECTED CEILING SYMBOLS:
REFER TO SPECIFICATIONS TABLE

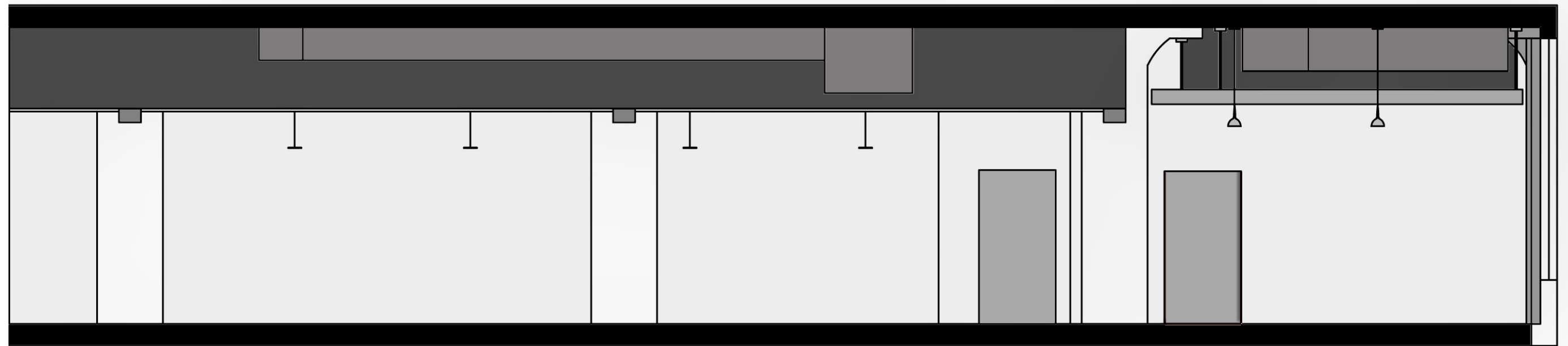
	WALL MOUNTED LIGHT FIXTURE
	RECESSED LIGHT - 1
	RECESSED LIGHT - 2
	RECESSED LIGHT - 3
	SUSPENDED LIGHTING SYSTEM - 1
	SUSPENDED LIGHTING SYSTEM - 2
	SUSPENDED LIGHTING SYSTEM - 3
	CEILING MOUNTED PENDANT LIGHT
	WALL MOUNTED EXIT SIGN
	CEILING MOUNTED EXIT SIGN

LIGHTING FIXTURES SCHEDULE

SYMBOL	ITEM	DIMENSIONS	MFGR.	MODEL #	FINISH	LAMP	NOTES
	WALL MOUNTED LIGHT FIXTURE	15"L X 7 1/4" W X 12 1/4"H	ARTEMIDE	LOGICO WALL SINGLE	GLASS WITH STAINED	HAL E26/A19 (1) 75W	NONE
	RECESSED LIGHT 1	7 5/8" DIA.	JUNO	26W-WH	GLASS WHITE, WHITE TRIM	(1) 90W PAR38	NONE
	RECESSED LIGHT 2	23 5/8" X 23 5/8"	ARTEMIDE	USC - M035508S00RE	WHITE	(1) 55W	NONE
	RECESSED LIGHT 3	23 7/8" X 23 7/8"	ZUMTOBEL	752	WHITE	(1) 39W	ONLY IN CLOSED OFFICE SPACES
	SUSPENDED LIGHT SYSTEM - 1	46 15/16" L X 7 1/8" W	ARTEMIDE	USC - M090028S00FL2C1	WHITE	(2) 28W	NONE
	SUSPENDED LIGHT SYSTEM - 2	93 15/16" L X 7 1/8" W	ARTEMIDE	USC - M090028S00FL2C1*	WHITE	(4) 28W	ATTACHED WITH A 4 3/4 "L X 7 1/8 "W END PLATE. M# - USC - M090220
	SUSPENDED LIGHT SYSTEM - 3	46 5/8"L X 11 7/8" W	ARTEMIDE	USC - M093728S00C1	WHITE	(2) 28W	ATTACHED WITH A 4 3/4 "L X 7 1/8 "W END PLATE. M# - USC - M090220
	CEILING MOUNTED PENDANT LIGHT	6" DIA. - CANOPY 7 1/16" DIA. - PENDANT GLASS	ARTEMIDE	CASTORE CALICE 18 SUSPENSION	VENETIAN GLASS & STEEL	HAL G161/2/E12 (1) 40W	NONE

E-W SECTION VIEW

NOT TO SCALE



ENTRY/RECEPTION



MAIN CIRCULATION



OPEN WORK AREA 1



OPEN WORK AREA 2



LOUNGE AREA

