

P O R T F O L I O T H R E E

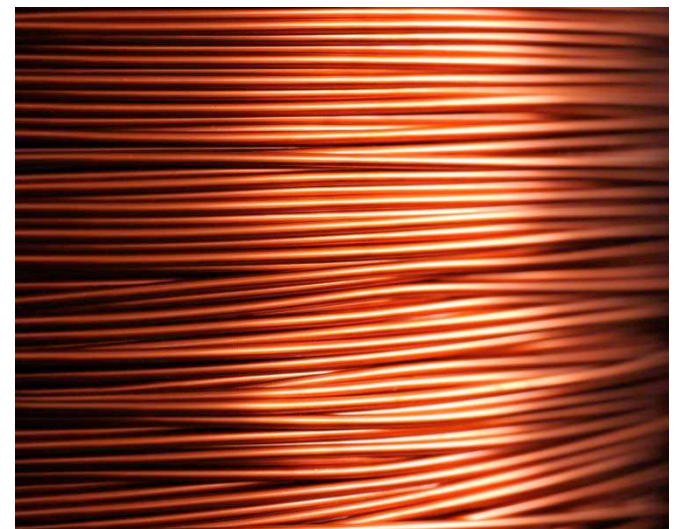
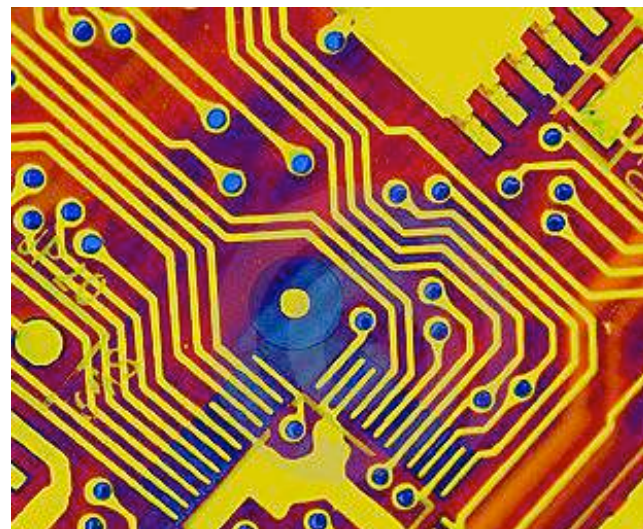
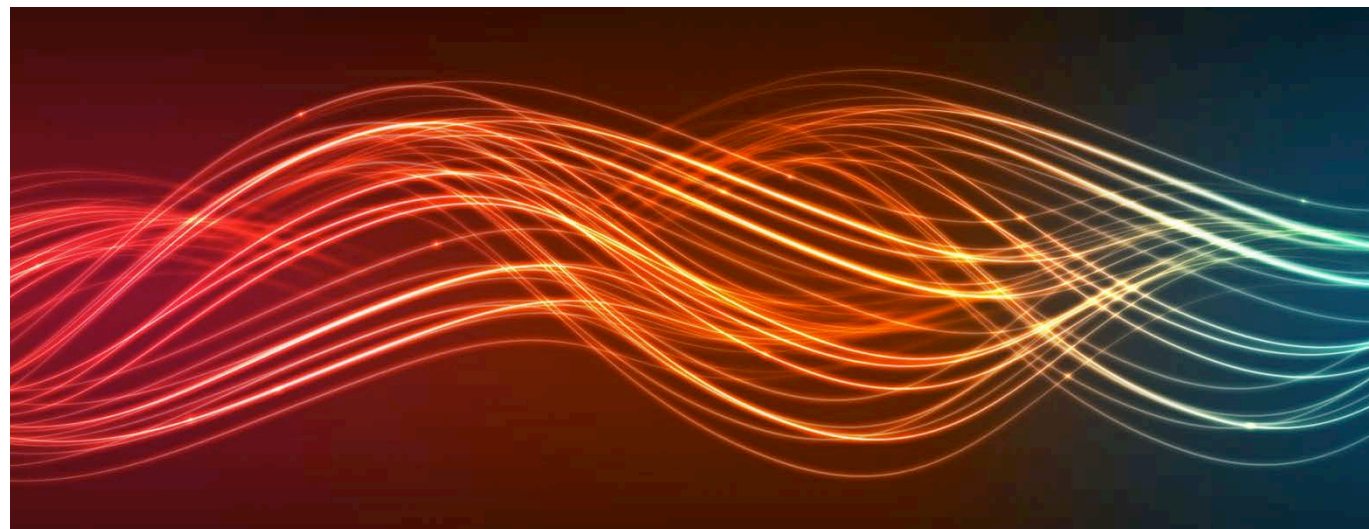
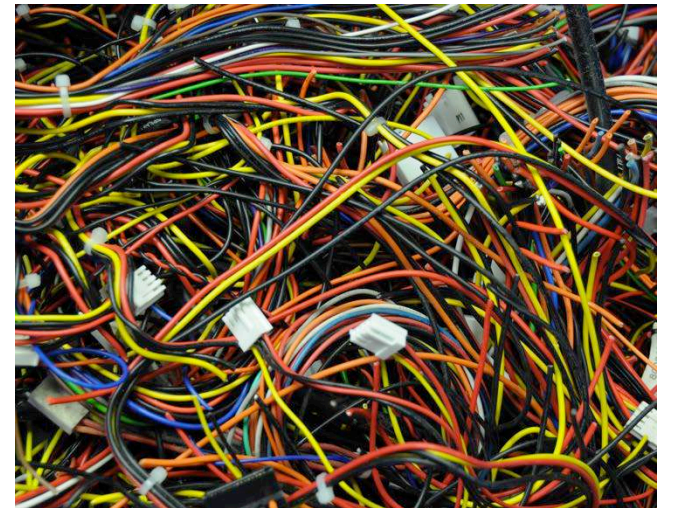
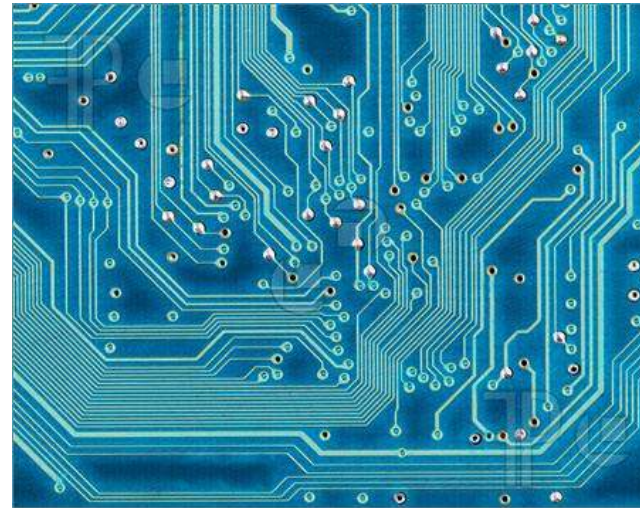
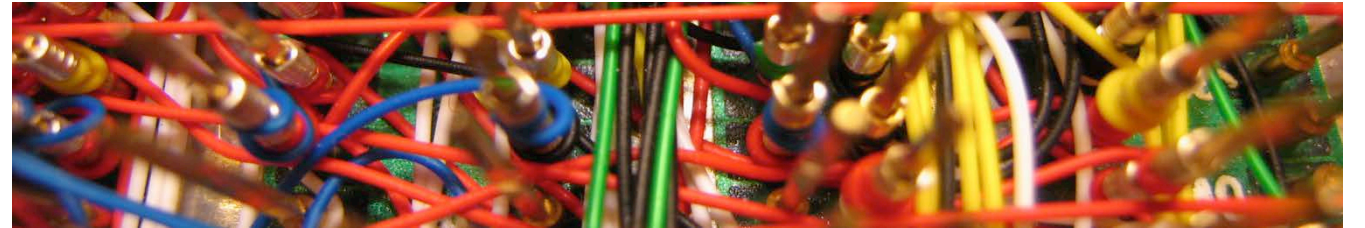
INTERIOR DESIGN 3600

ELISA CHRISTOPHER

FALL 2014

CONCEPT STATEMENT

- AS TIME PASSES AND WE LAUNCH OURSELVES INTO THE FUTURE, TECHNOLOGY BECOMES A GREATER PART OF OUR EVERYDAY LIVES. TECHNOLOGY KEEPS US CONNECTED AND ALLOWS US TO CONSTANTLY BE ON THE MOVE. THIS OFFICE DESIGN WILL PORTRAY THE CONNECTIVITY AND MOBILITY INSPIRED BY TECHNOLOGY.

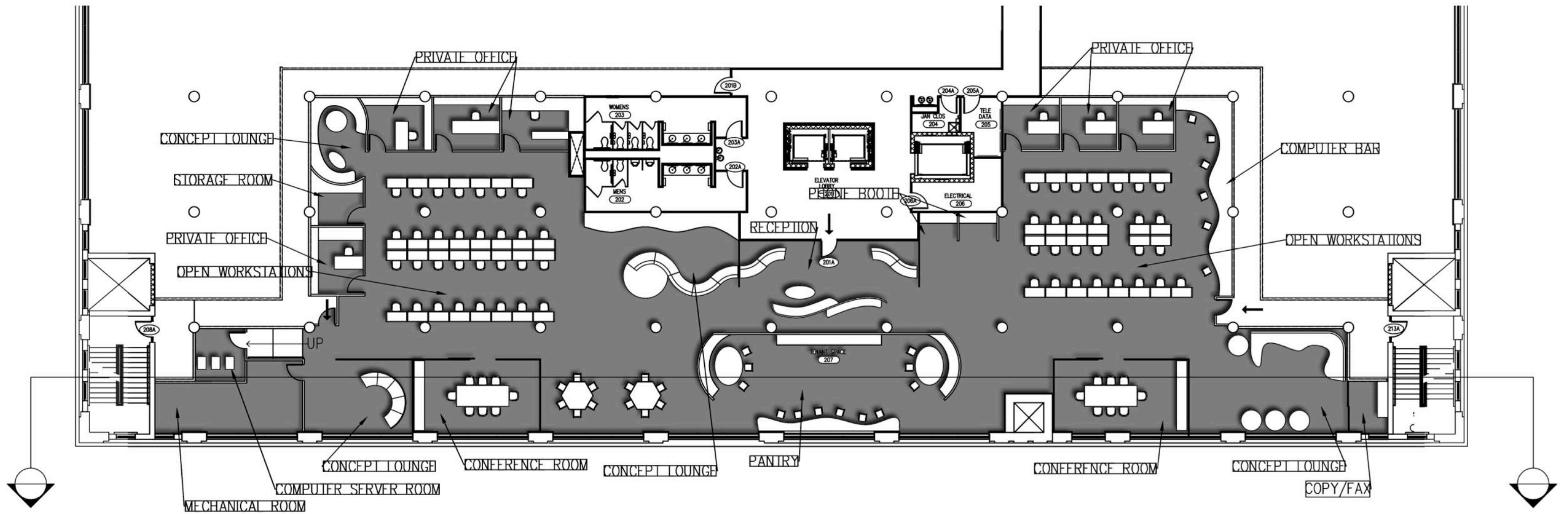


SUSTAINABILITY STATEMENT

CAPTURING EMBODIED ENERGY THROUGH ADAPTIVE REUSE, CREATING THIS OFFICE SPACE IN AN EXISTING BUILDING, THERE WILL BE A SMALLER IMPACT ON THE ENVIRONMENT. THERE WILL BE FEWER MATERIALS USED AND THEREFORE, LESS WASTE. MATERIALS WILL BE DURABLE, BIODEGRADABLE, AND/OR RECYCLABLE. BUILDING COMMISSIONING WILL TAKE PLACE TO ENSURE OPTIMAL PERFORMANCE AND A REDUCTION IN ENERGY CONSUMPTION.

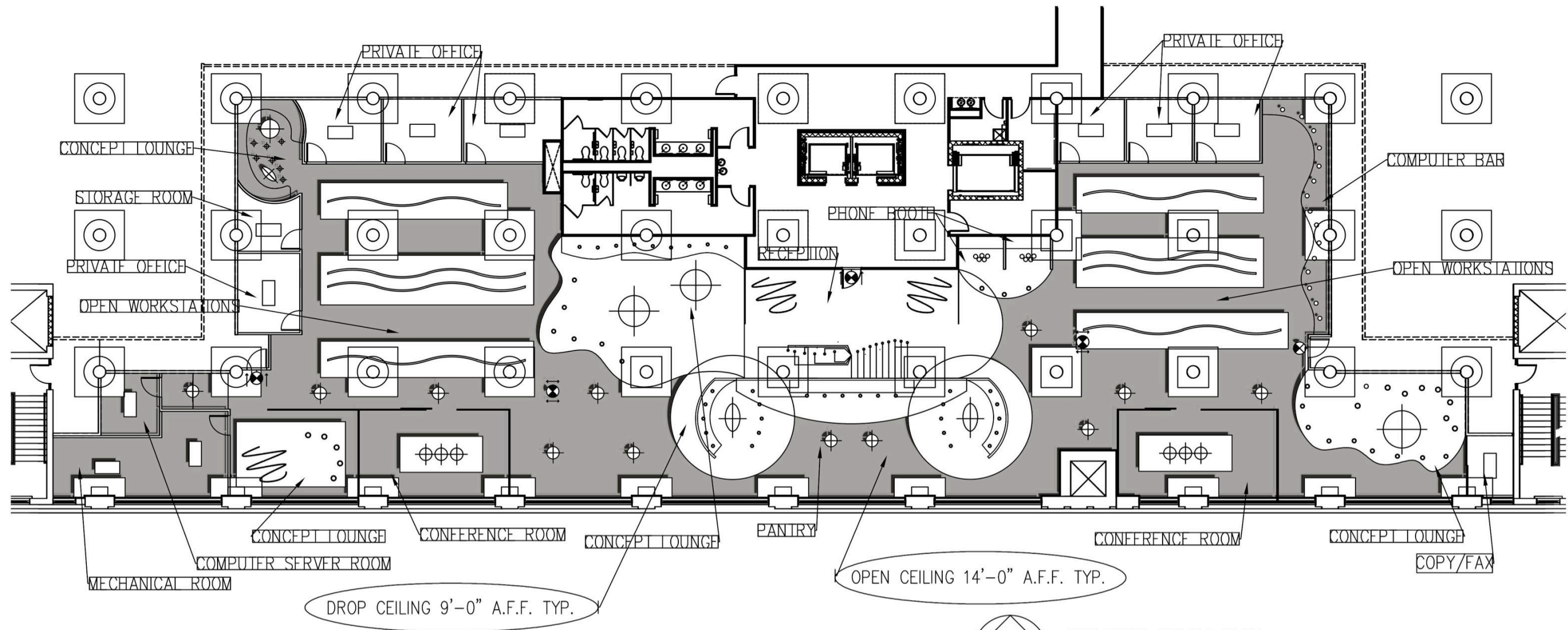


FURNITURE PLAN



FURNITURE PLAN
SCALE: 1/16" = 1'-0"

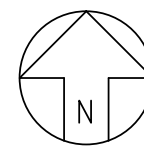
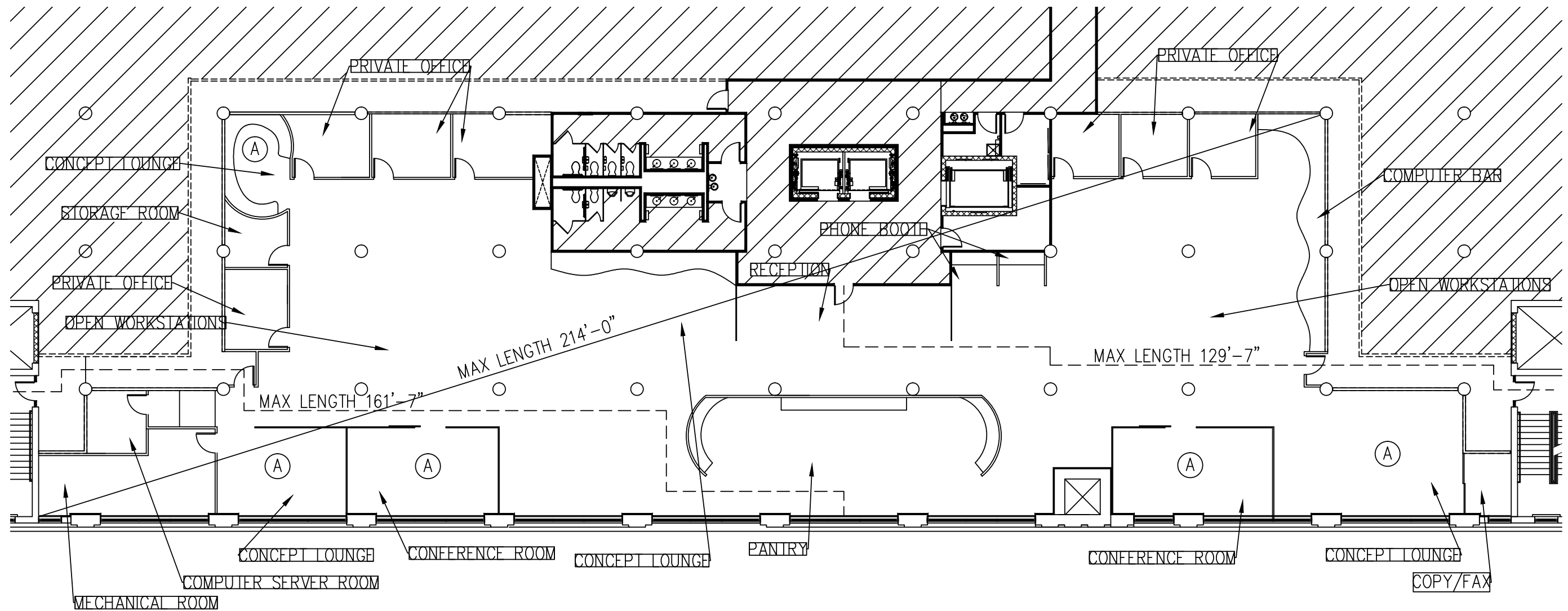
REFLECTED CEILING PLAN



REFLECTED CEILING PLAN
SCALE: 1/16" = 1'-0"

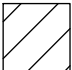

LIGHTING SYMBOLS	
⊙	RECESSED LIGHT 8" DIA.
□	RECESSED LIGHT 2'X4'
⊕	DROP PENDANT
~	FLEXIBLE NEON TUBE LIGHT
—	DIRECT/INDIRECT PENDANT

LIFE SAFETY PLAN



LIFE SAFETY PLAN
SCALE: 1/16" = 1'-0"

BUSINESS OCCUPANCY 10,200

KEY:	
	OUTSIDE SCOPE OF WORK
	ASSEMBLY AREA

OCCUPANCY TABLE

Building Construction and Occupancy

Construction Type	Sprinklers?	Occupancy Type				
Concrete/Steel (Type I)	Yes	Business (B)				

Exit Requirements: Number and Arrangement of Exits

Space Designation	# of Exits		Travel Distance		Arrangement: Means of Egress	
	Required	Shown on Plans	Allowable Distance	Actual Distance Shown on Plans	Req'd Distance Between Exits	Actual Distance Shown on Plans
Suite 3100	2	3	300 ft.	214'	64'	129'

Notes:

Use Group or Space Designation	(A)	(B)	Calculated Occupant Load = A/B	©		Exit Width (Inches)			
	Area = Sq. Ft.	Area per Occupant		Egress per Occupant		Required Width = (A/B)xC		Actual Width	
Suite 3100	10,200 sq. ft.	100 sq. ft.	102	Stair	Level	Stair	Level	Stair	Level
				.3"	.2"	30.6	20.4	61"	120"

Notes:

LIGHTING ANALYSIS

$$\text{RCR} = \frac{5(H)(L+W)}{L \times W}$$

$$\text{RCR} = \frac{5(10)(11+10)}{10 \times 11}$$

$$\text{RCR} = 9.54$$

$$\text{LLF} = \text{LLD} \times \text{LDD}$$

$$\text{LLF} = .9 \times .85$$

$$\text{LLF} = .765$$



$$\text{MAINTAINED FC} = \frac{\# \text{ OF LAMPS} \times \text{INITIAL LAMP LUMENS} \times \text{LLF} \times \text{CU}}{\text{AREA}}$$

$$\text{MAINTAINED FC} = \frac{1 \times 1253 \times .765 \times 26}{130}$$

$$\text{MAINTAINED FC} = 191$$

LIGHTING ANALYSIS

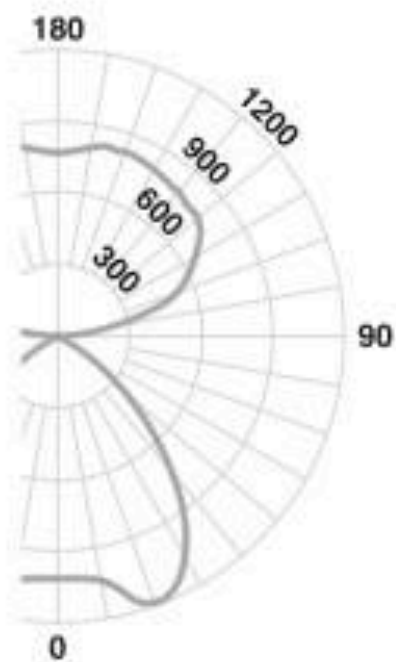
Lighting Systems Agili-T Pendant Direct/Indirect **AGL**

Page 2 of 2

2 lamp T5 per 4' section

Performance

CANDLEPOWER CURVE



REPORT NO: LSC8477
 CAT. NO: AGL4PGROSSZ28UNVPG
 2 x 29W T5 at 2610 lumens. Efficiency: 88.6%
 Indirect Maximum candela: 738 cd
 Indirect Peak at: 162.5°. Candela at Nadir: 916 cd

CANDLEPOWER

ZONE DEG	0	22.5	45	67.5	90
0	916	916	916	916	916
5	908	903	914	919	913
15	849	864	910	987	1018
25	758	789	946	1026	1046
35	618	715	840	837	830
45	457	582	577	518	496
55	218	327	272	202	161
65	10	16	34	28	2
75	2	0	0	2	1
85	0	0	0	0	0
90	0	0	1	10	9
95	17	74	87	82	83
105	104	225	313	363	363
115	220	328	466	515	542
125	334	433	550	544	651
135	442	520	604	672	692
145	540	598	567	701	716
155	615	648	695	726	731
165	666	678	715	723	736
175	688	690	692	708	700
180	692	692	692	692	692

COEFFICIENTS OF UTILIZATION

ZONAL CAVITY METHOD • EFFECTIVE FLOOR CAVITY REFLECTANCE = .20

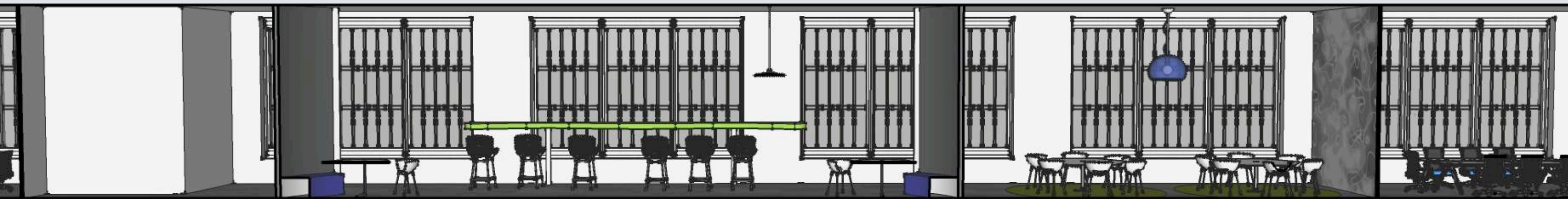
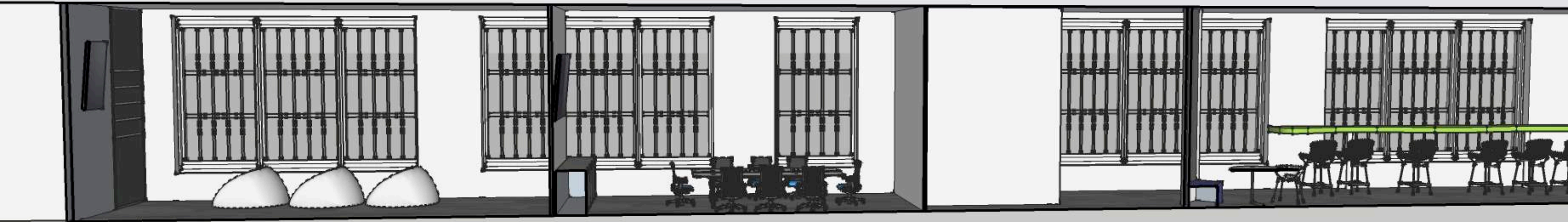
ROOM CAVITY RATIO	Wall reflectance										
	80			70			50				
	70	50	30	70	50	30	10	50	30	10	
0	.93	.93	.93	.93	.85	.85	.85	.85	.70	.70	.70
1	.86	.83	.80	.77	.79	.76	.74	.71	.63	.61	.60
2	.80	.74	.69	.65	.73	.68	.64	.61	.57	.54	.52
3	.74	.66	.61	.56	.67	.61	.56	.52	.51	.48	.45
4	.68	.59	.53	.49	.62	.55	.50	.45	.46	.42	.39
5	.63	.53	.47	.42	.57	.49	.44	.39	.42	.38	.34
6	.58	.48	.41	.37	.53	.44	.39	.35	.38	.34	.30
7	.53	.43	.37	.32	.49	.40	.34	.30	.34	.30	.27
8	.48	.39	.33	.28	.45	.36	.30	.26	.31	.26	.23
9	.45	.35	.29	.25	.42	.33	.27	.23	.28	.24	.20
10	.42	.32	.26	.22	.39	.30	.24	.20	.25	.21	.18

DETERMINED IN ACCORDANCE WITH CURRENT IES PUBLISHED PROCEDURES
 LUMINAIRE INPUT WATTS = 65.4

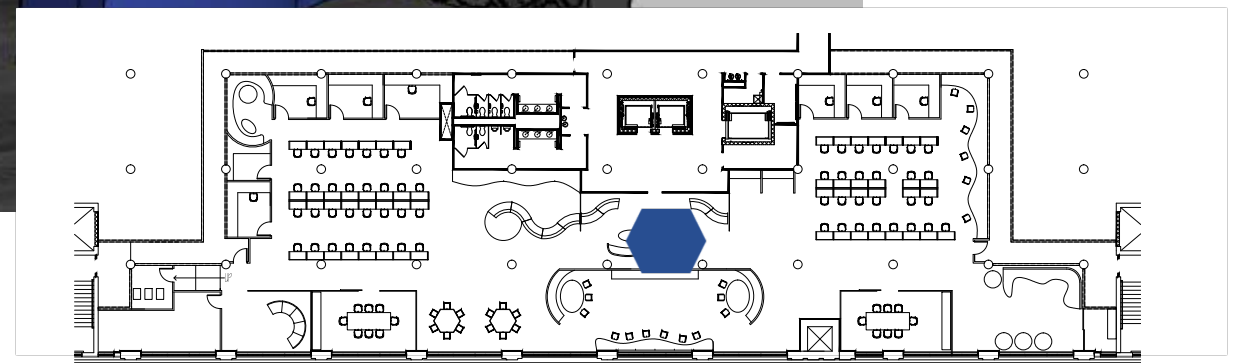
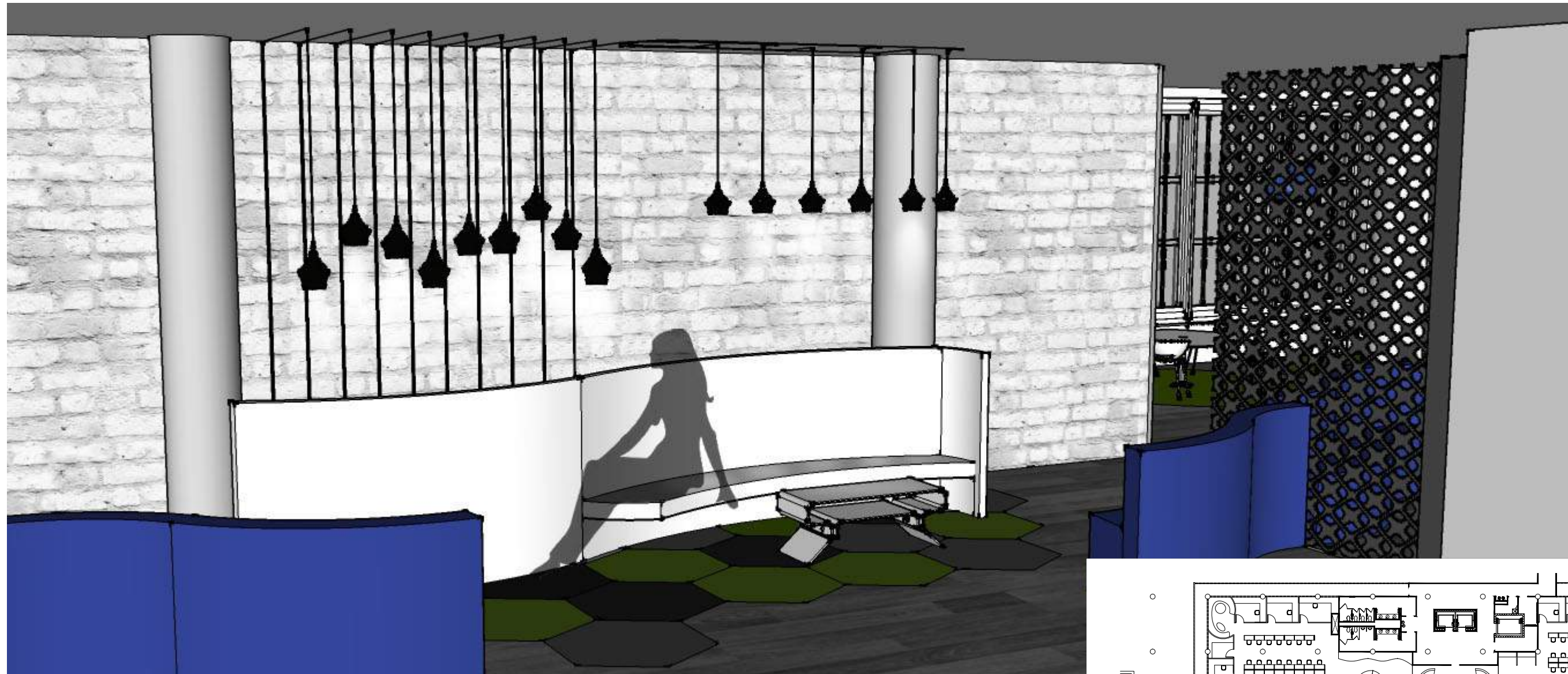
DISTRIBUTION

ZONE	LUMENS	% LAMP	% LUMINAIRE
0-30	770	14.76	16.63
0-40	1253	24.02	27.06
0-60	1884	36.10	40.68
0-90	1917	36.74	41.39
40-90	663	12.72	14.33
60-90	32	.63	.71
90-180	2715	52.02	58.61
0-180	4633	88.76	100.00

SECTION VIEWS: EAST AND WEST

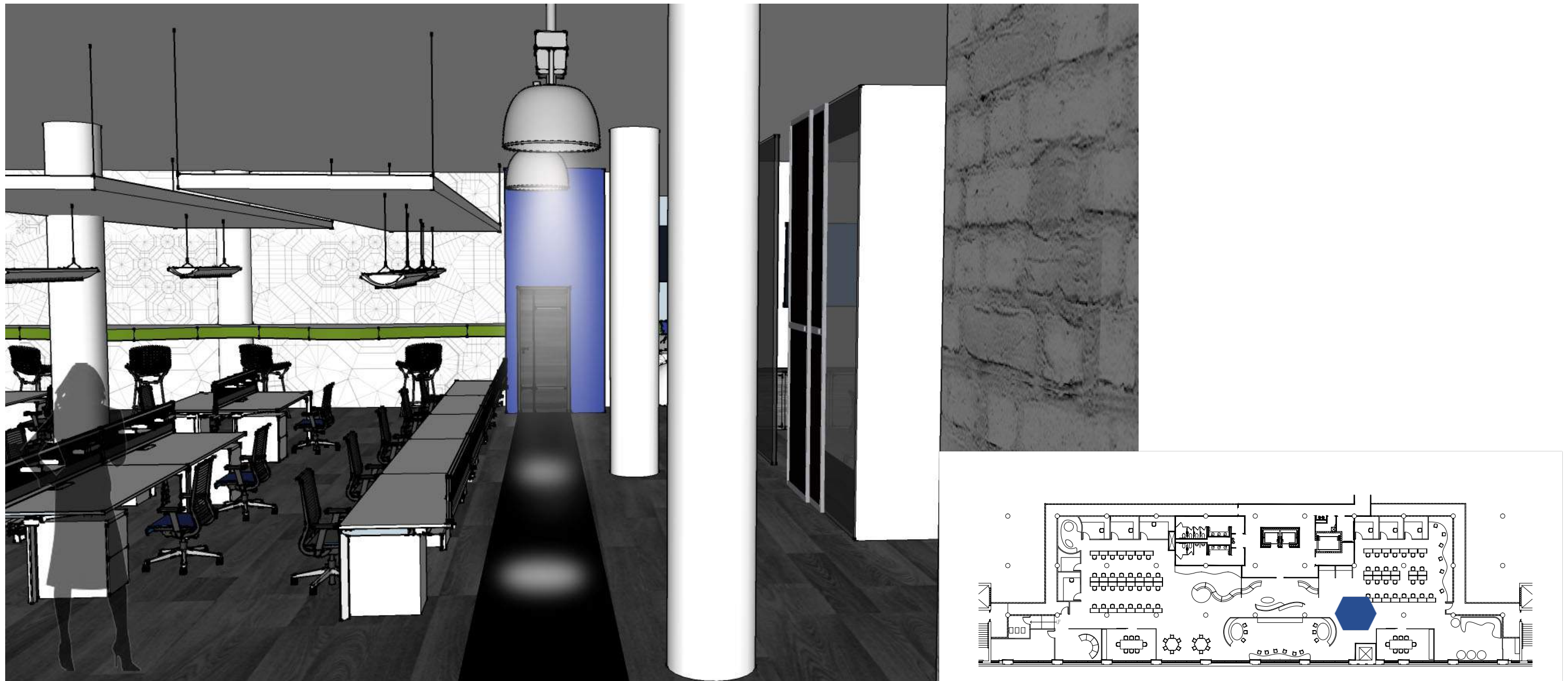


PERSPECTIVE



RECEPTION AREA

PERSPECTIVE



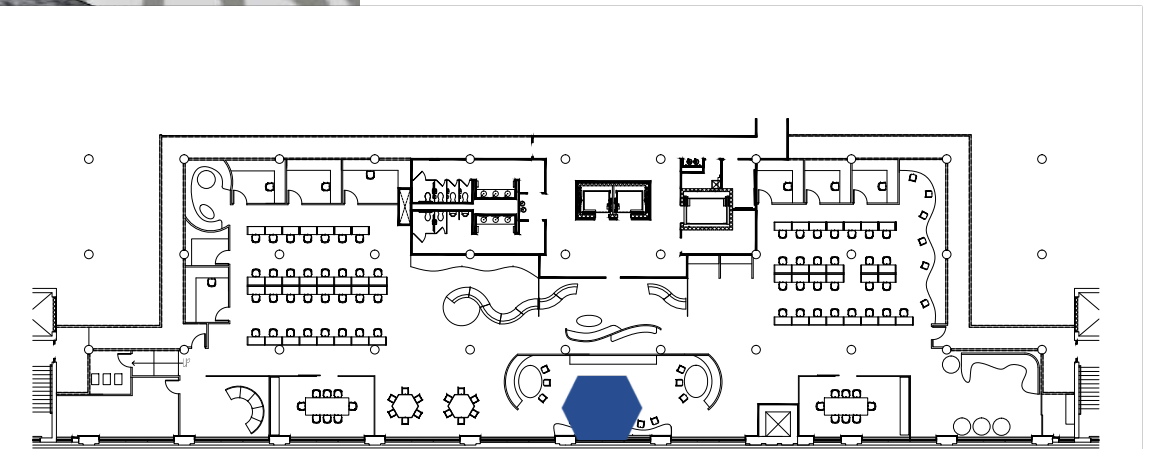
MAIN CIRCULATION

PERSPECTIVE



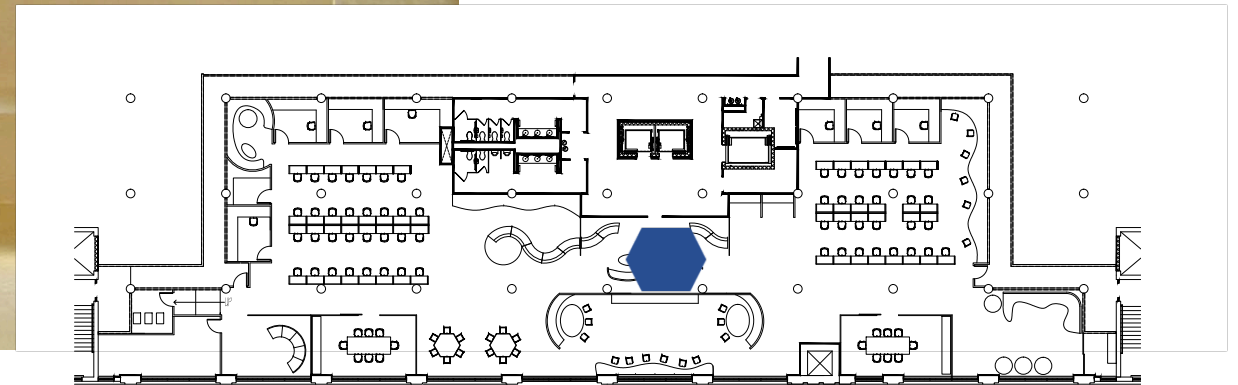
OPEN WORK AREA

PERSPECTIVE

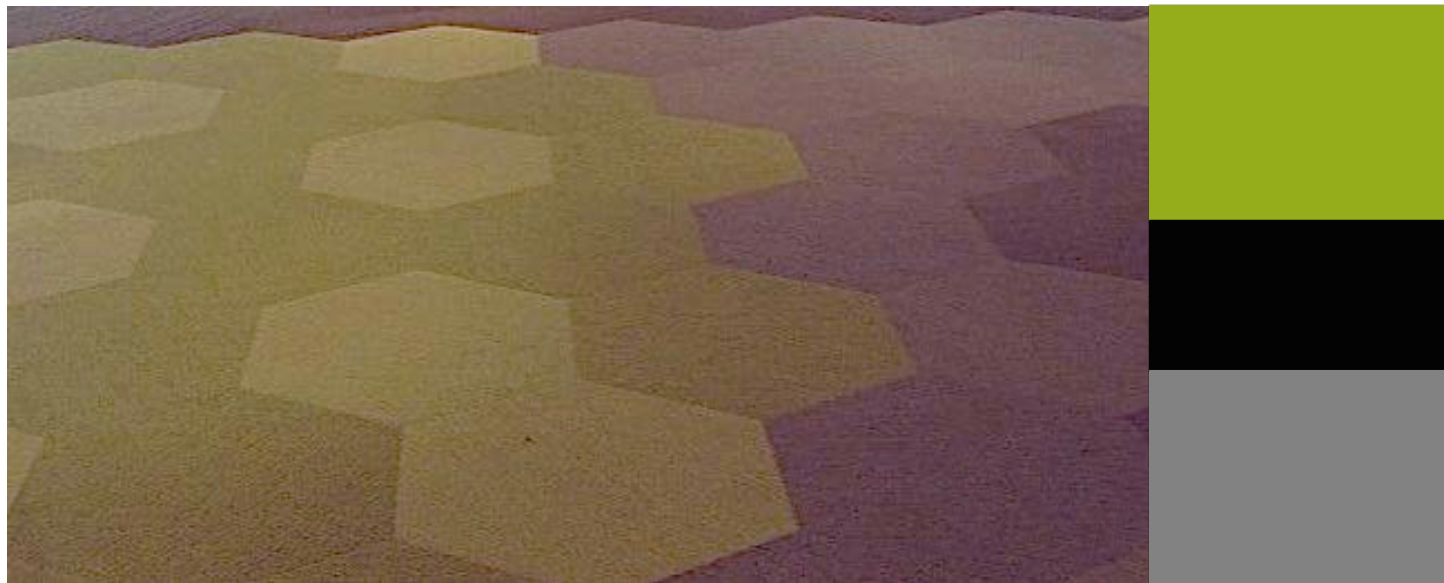
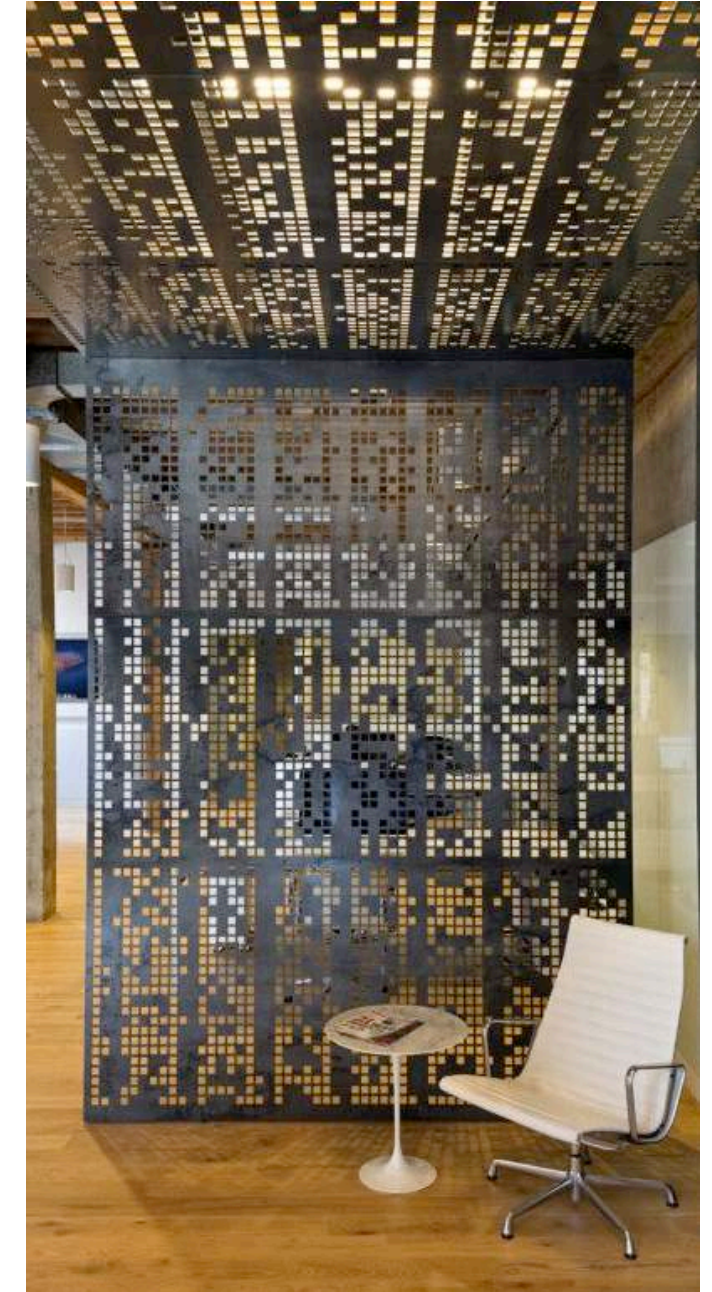
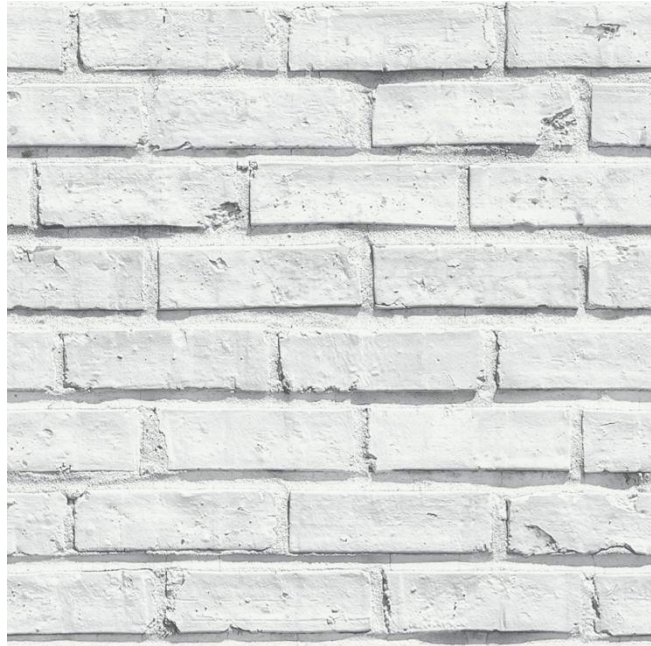


CONCEPT LOUNGE

LIGHTING MODEL: RECEPTION

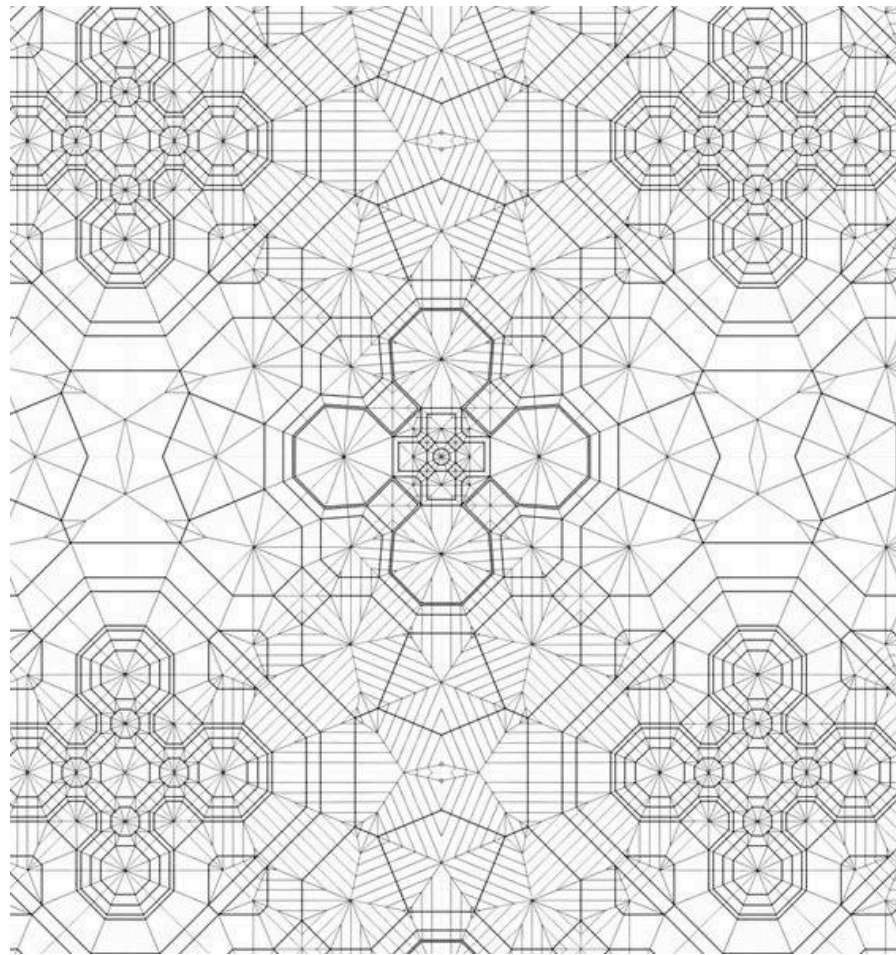


FURNITURE AND FINISHES



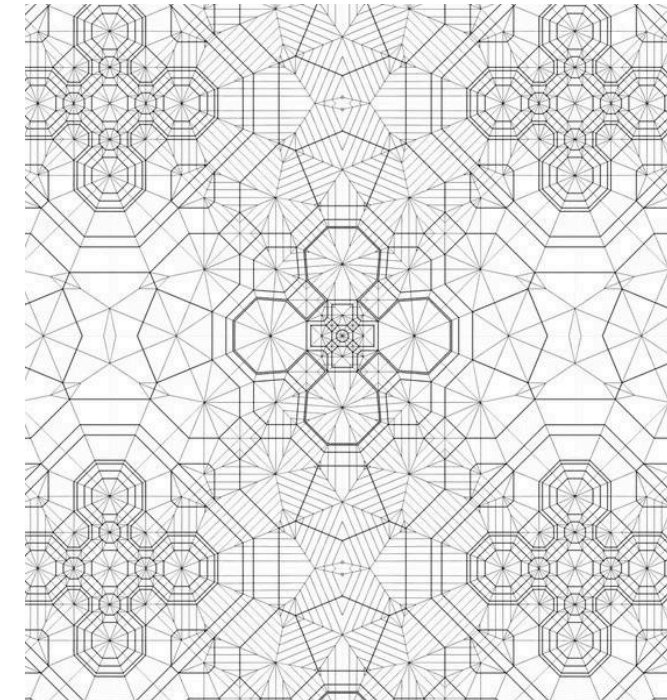
RECEPTION AREA

FURNITURE AND FINISHES



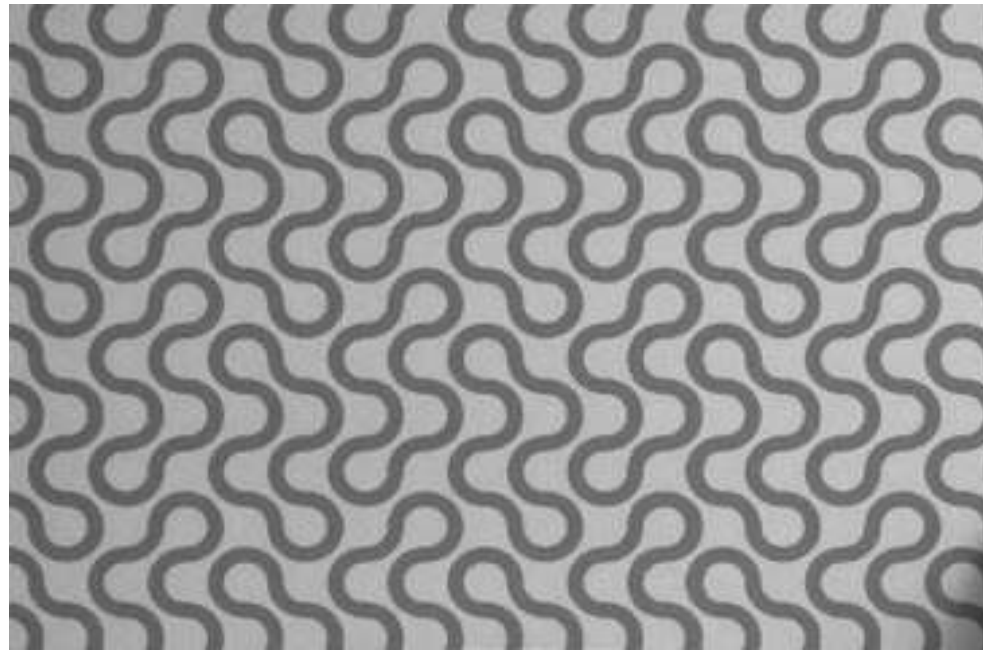
MAIN CIRCULATION

FURNITURE AND FINISHES



OPEN WORK AREA

FURNITURE AND FINISHES



CONCEPT LOUNGE