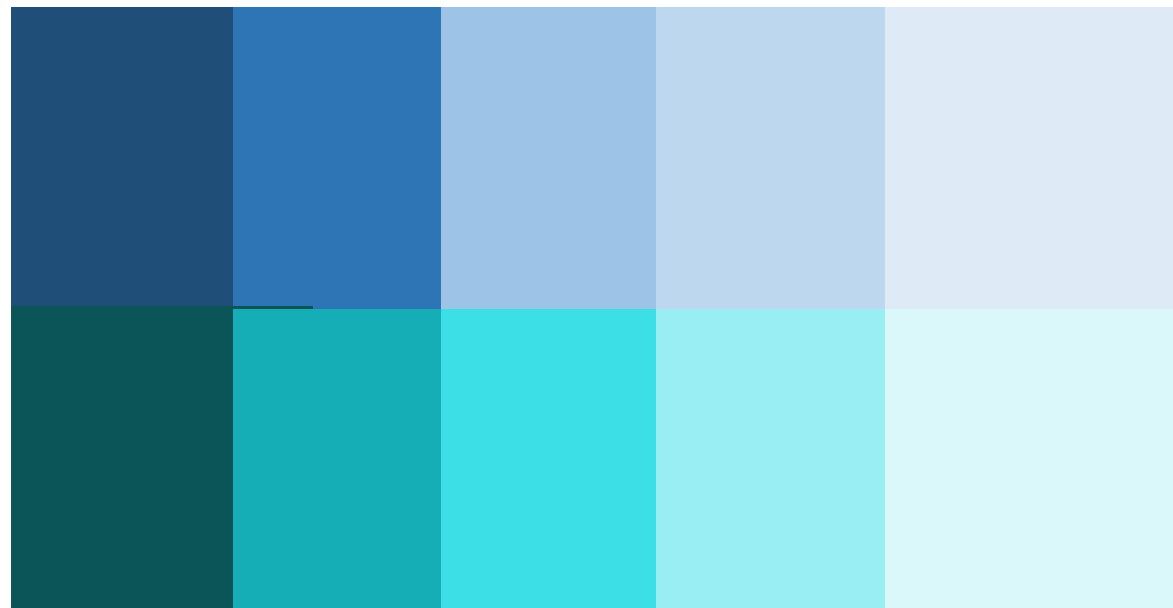


PORTFOLIO 3
IDSN 3600
TYLER CURRIE

CONCEPT STATEMENT

- Fluidity
- Curvilinear lines
- Mood lighting
- Transitional spaces
- Fluid movements from space to space create an almost laid back work style.
- Relaxing/less stressful work environment
- Clean, modern lines
- Serene color palate, soothing to the eye
- Co-working environment



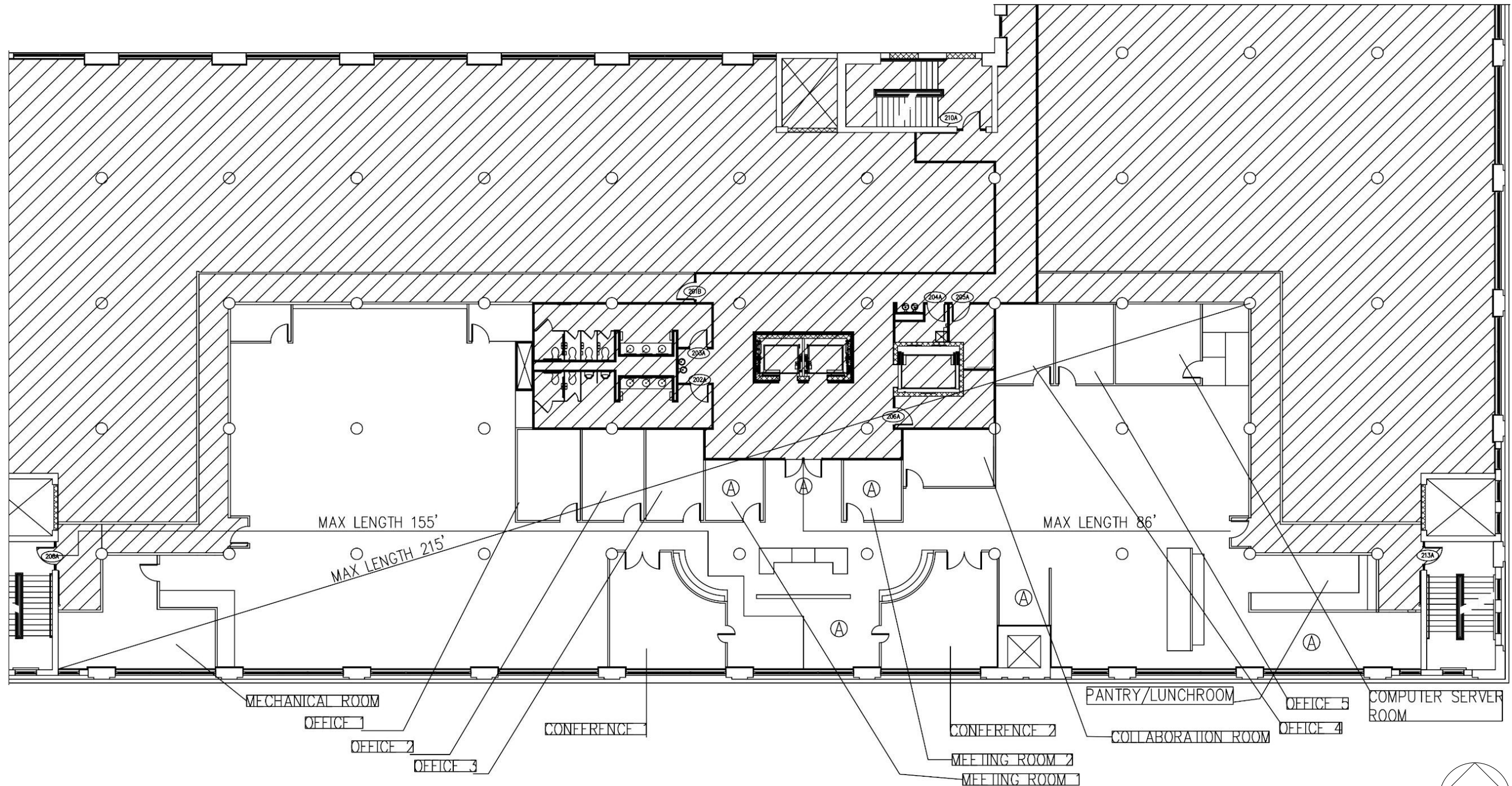
SUSTAINABILITY STATEMENT

My plan for this design is to create an eco-friendly space, fit for the most capable of businesses, while creating as little negative and harmful impact on the earth as possible. Ideally, when designing our new space, we want to create as little impact on our surroundings and our environment as possible. Ensuring a safe, clean, and renewable environment takes center stage when it comes to my design. With cooperation from local and some external manufacturers, hopes are that all materials will be energy-rated and environmentally conscious as well as aesthetically pleasing to the eye. The overall goal of this space is not only to become the epitome of “good design” but to also become the ideal “green” space modeled for businesses to come.

- The substantial size of the windows will provide heat during the colder months, reducing the usage of heat. Screens and other window shades/treatments will be used in the warmer months to ensure coolness and shade.
- Lighting sensors will be added to enclosed office spaces as well as storage rooms to ensure that little energy is wasted when spaces are not occupied.
- All materials used in construction and renovation will be simplistic in the hopes that they can be found in around the surrounding area, resulting in low embodied energy for the total structure.
- Materials such as sheetrock, carpeting, flooring, etc. will use adhesives and other adhesive properties with little toxic fumes to ensure a clean and safe work environment.
- Clean air filtering systems will be installed for fresh, clean air.



LIFE SAFETY PLAN



BUSINESS OCCUPANCY 10,200

OUTSIDE WORK AREA

Ⓐ ASSEMBLY AREA

LIFE SAFETY PLAN
SCALE: 1/16" = 1'-0"

LIGHTING ANALYSIS

$$\text{MAINTAINED FC} = \frac{(\text{NUMBER OF LAMPS}) \times (\text{INITIAL LAMP LUMENS}) \times \text{LLF} \times \text{CU}}{\text{AREA}}$$

$$\text{RCR (ROOM CAVITY RATIO)} = 6.05$$

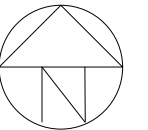
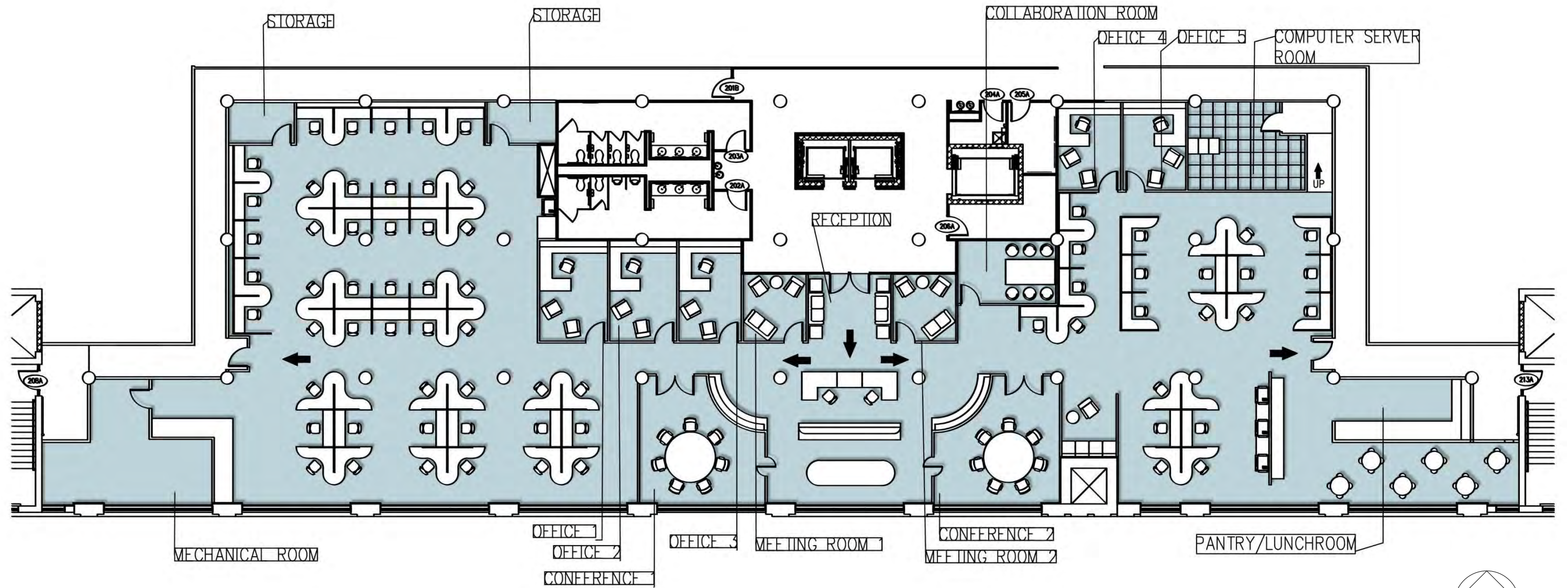
$$\frac{5(11)(10+12)}{200}$$

$$\text{MAINTAINED FC} = 23$$

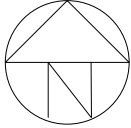
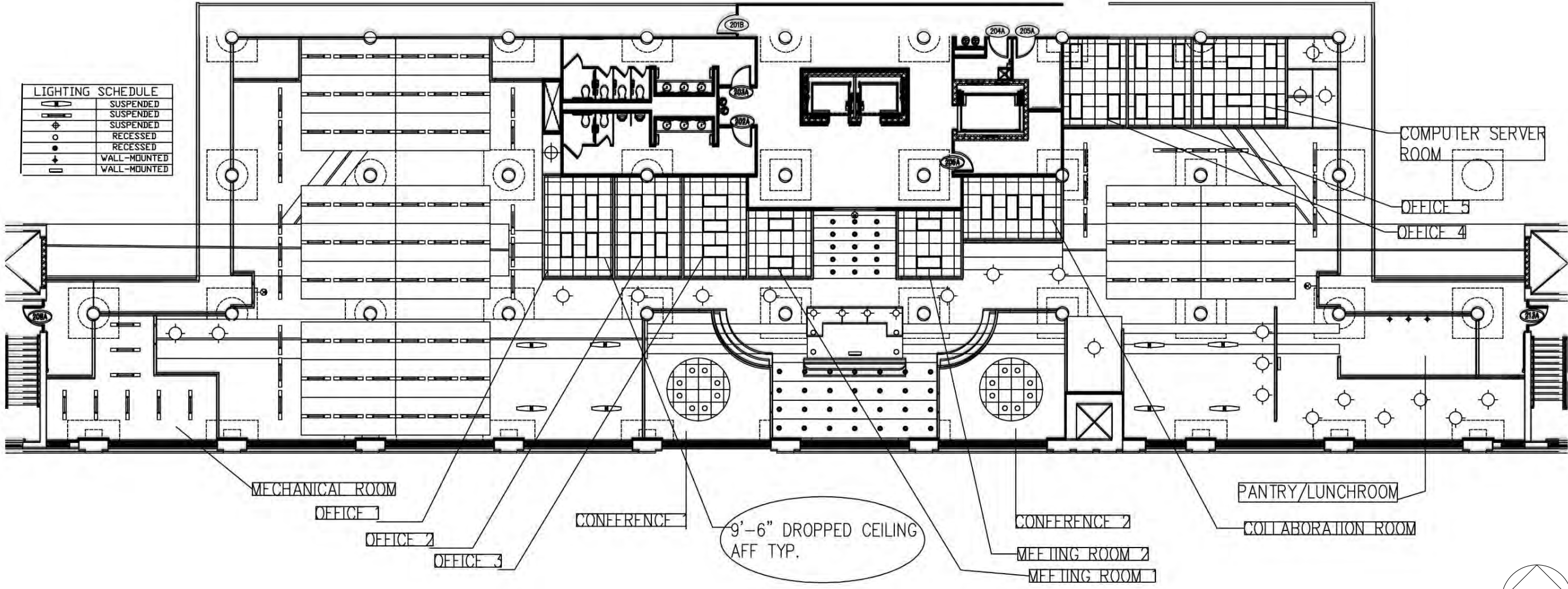
$$\frac{2 \times 3500 \times .9 \times .72}{200}$$

$$\text{LLF} = .9$$

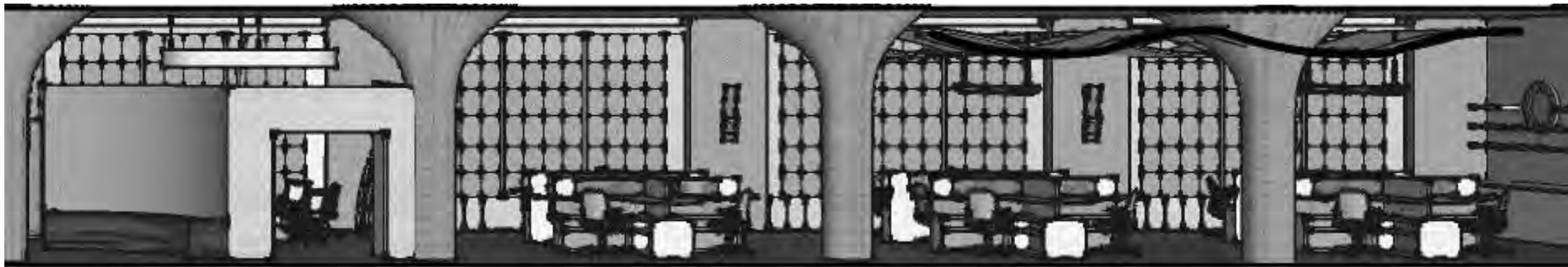
RENDERED FURNITURE PLAN



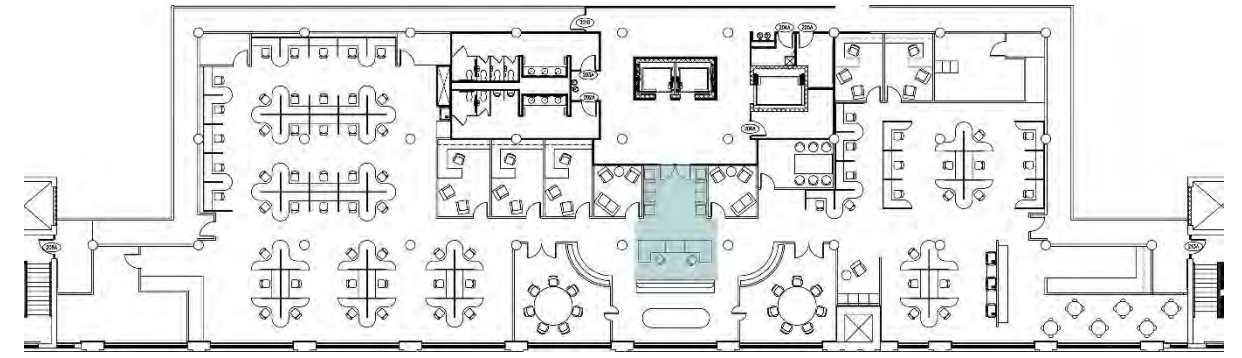
REFLECTED CEILING PLAN



EAST-WEST SECTION VIEW

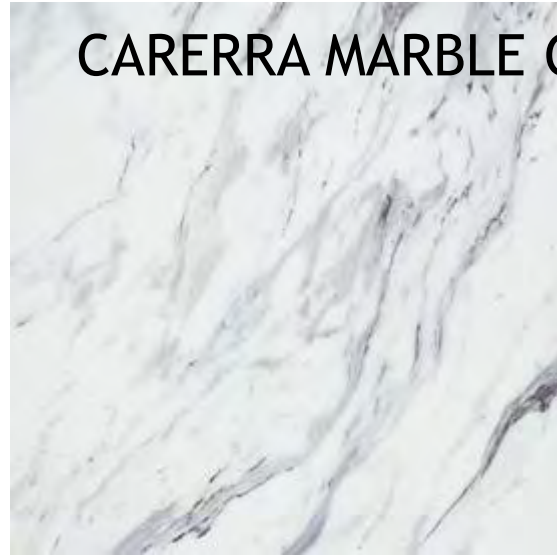


MAIN LOBBY

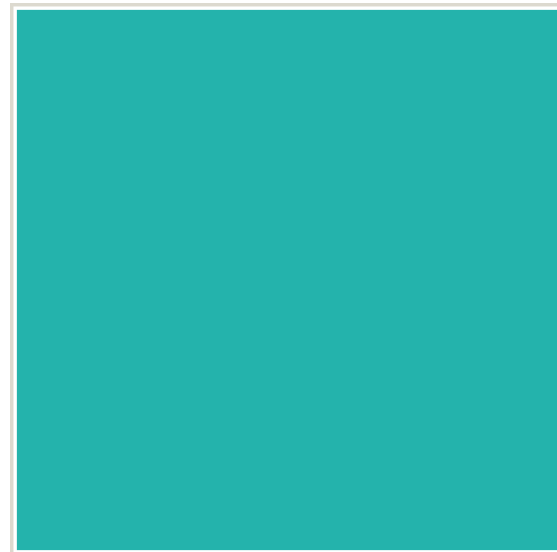


FURNITURE AND FINISHES

CARERRA MARBLE COUNTERTOPS



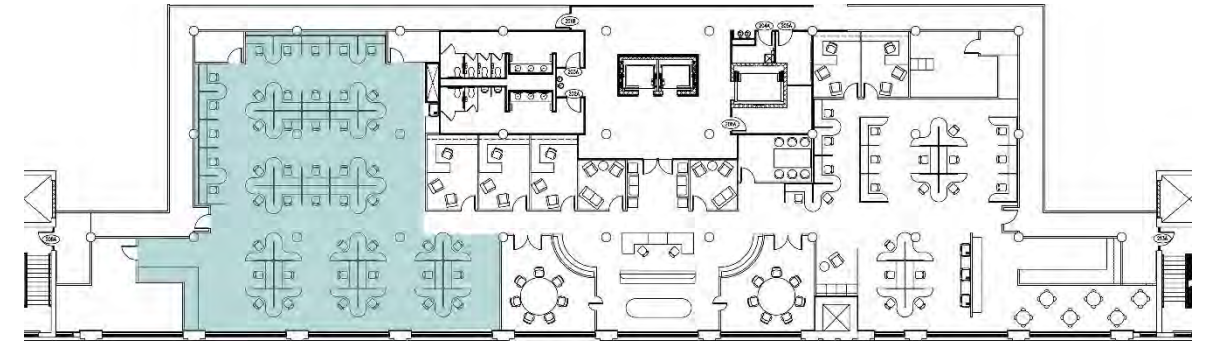
DARK WOOD SLAT WALL/RECEPTION DESK



SHERWIN WILLIAMS
HGTV Home-Coastal Collection
"Cooled Blue"



MAIN WORKSTATIONS



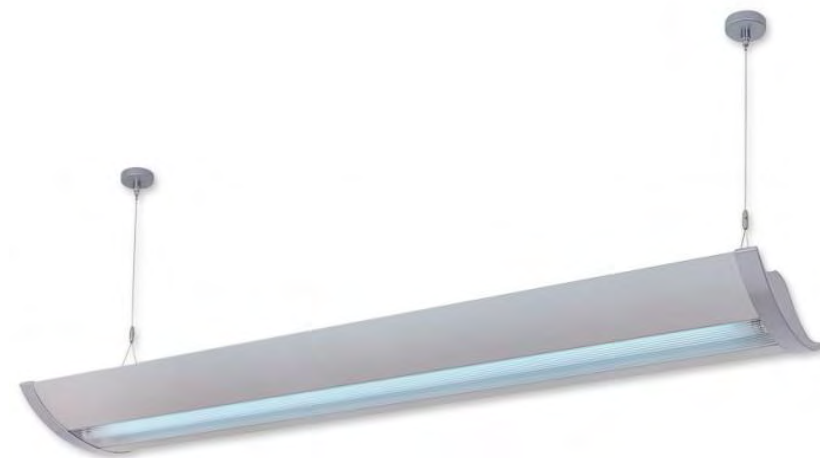
FURNITURE AND FINISHES



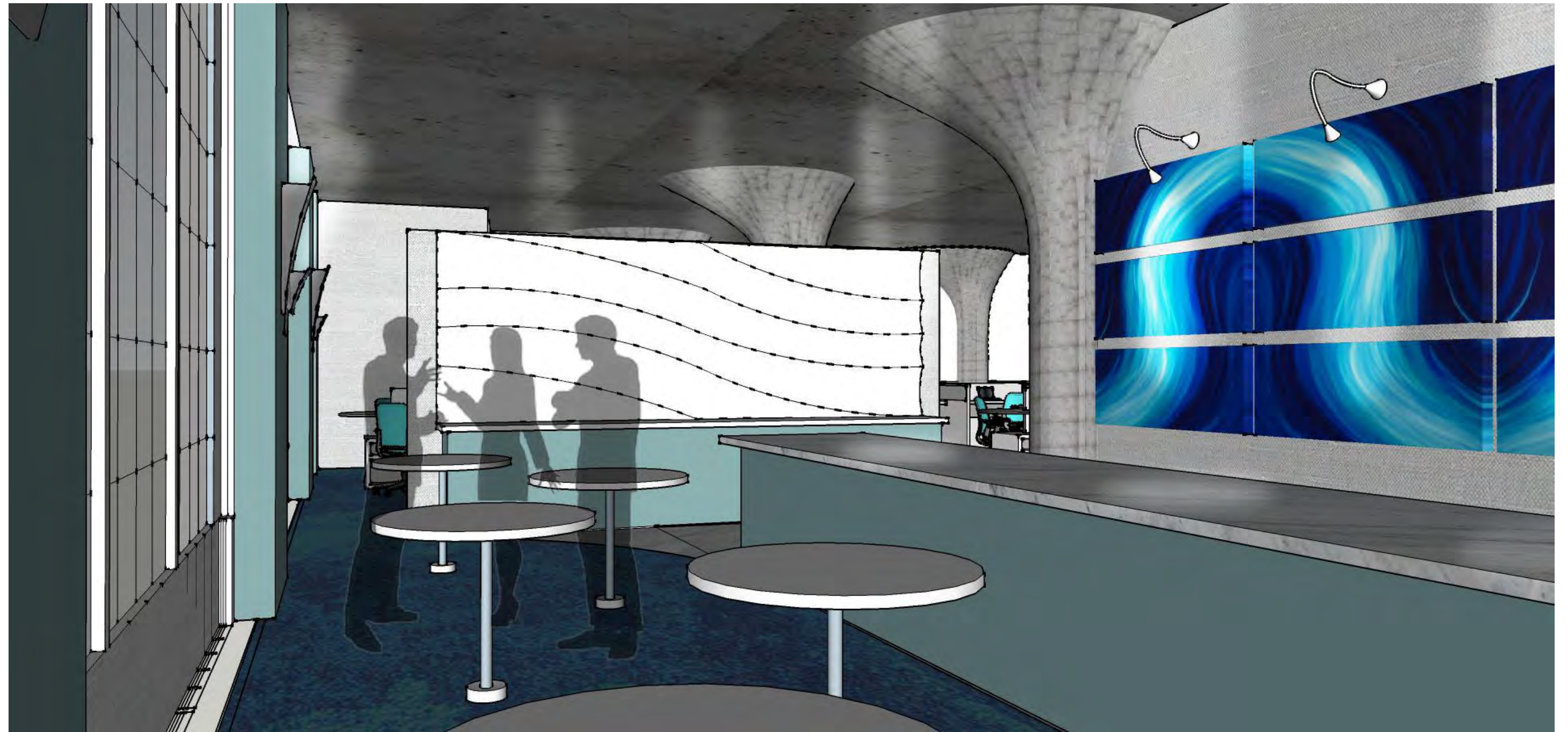
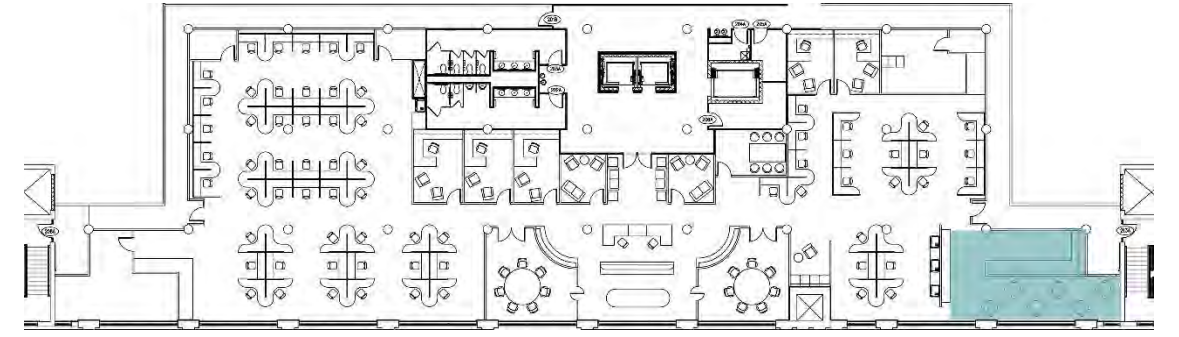
HERMAN MILLER-Mirra 2 Office Chair



Grass cloth wall covering



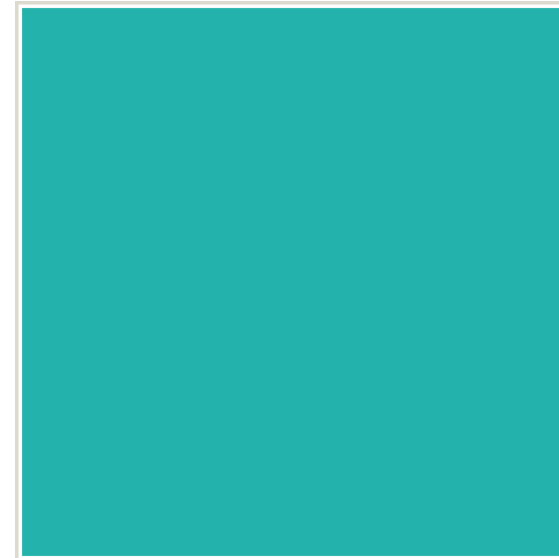
LUNCHROOM/PANTRY



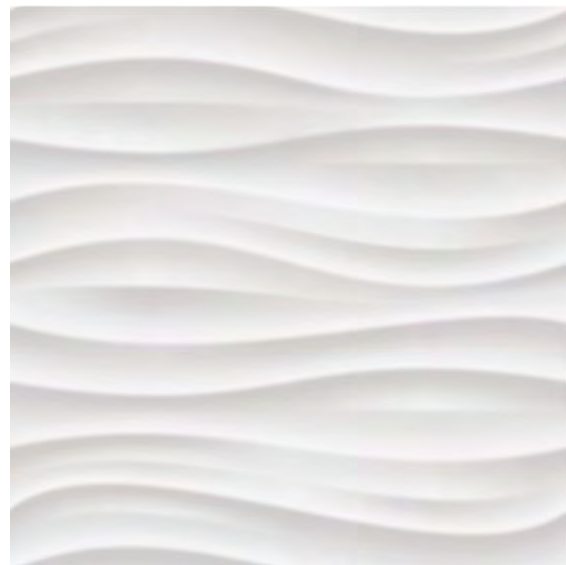
FURNITURE AND FINISHES



Grass cloth wall covering

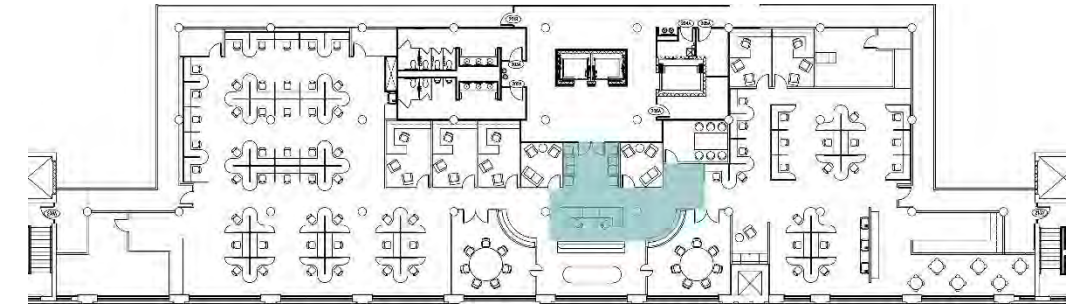


SHERWIN WILLIAMS
HGTV Home-Coastal Collection
"Cooled Blue"



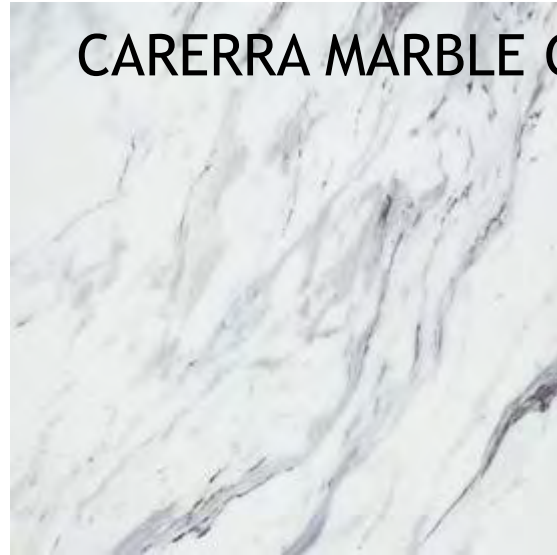
HAGGAS LED
pendant light

LOBBY/RECEPTION DESK



FURNITURE AND FINISHES

CARERRA MARBLE COUNTERTOPS



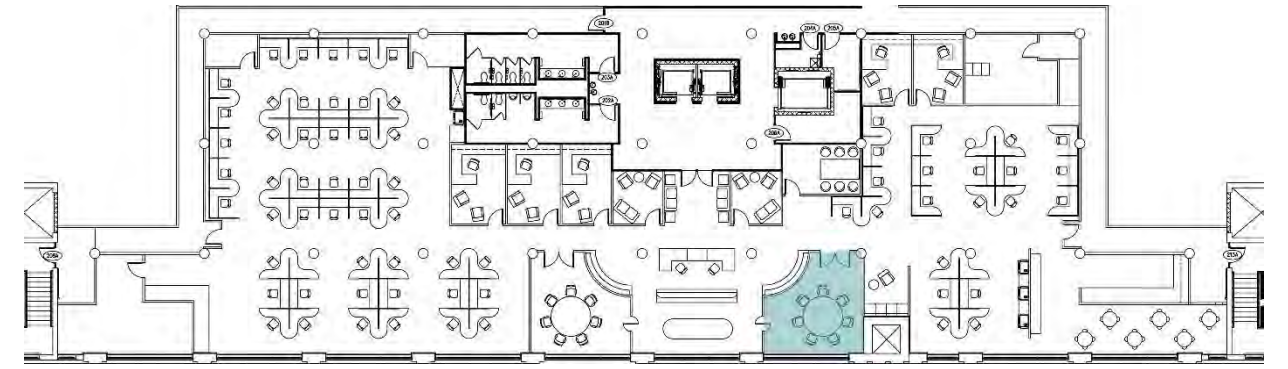
DARK WOOD SLAT WALL/RECEPTION DESK



SHERWIN WILLIAMS
HGTV Home-Coastal Collection
"Cooled Blue"



CONFERENCE ROOM



FURNITURE AND FINISHES



DARK WOOD SLAT WALL



Grass cloth wall covering



EAMES ALUMINUM GROUP EXECUTIVE CHAIR-WHITE



HAGGAS LED pendant light