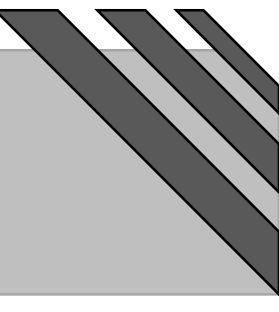


Portfolio 3

Nicole Lobell

IDSN 3600



History of building and city

- Co-Working
- Creative atmosphere
- Working with others/ cooperation
- Pharmaceutical
- Web Development
- Crossover
- Sleek design
- Traditional materials



Concept Statement

Assignment 11A

Page 1

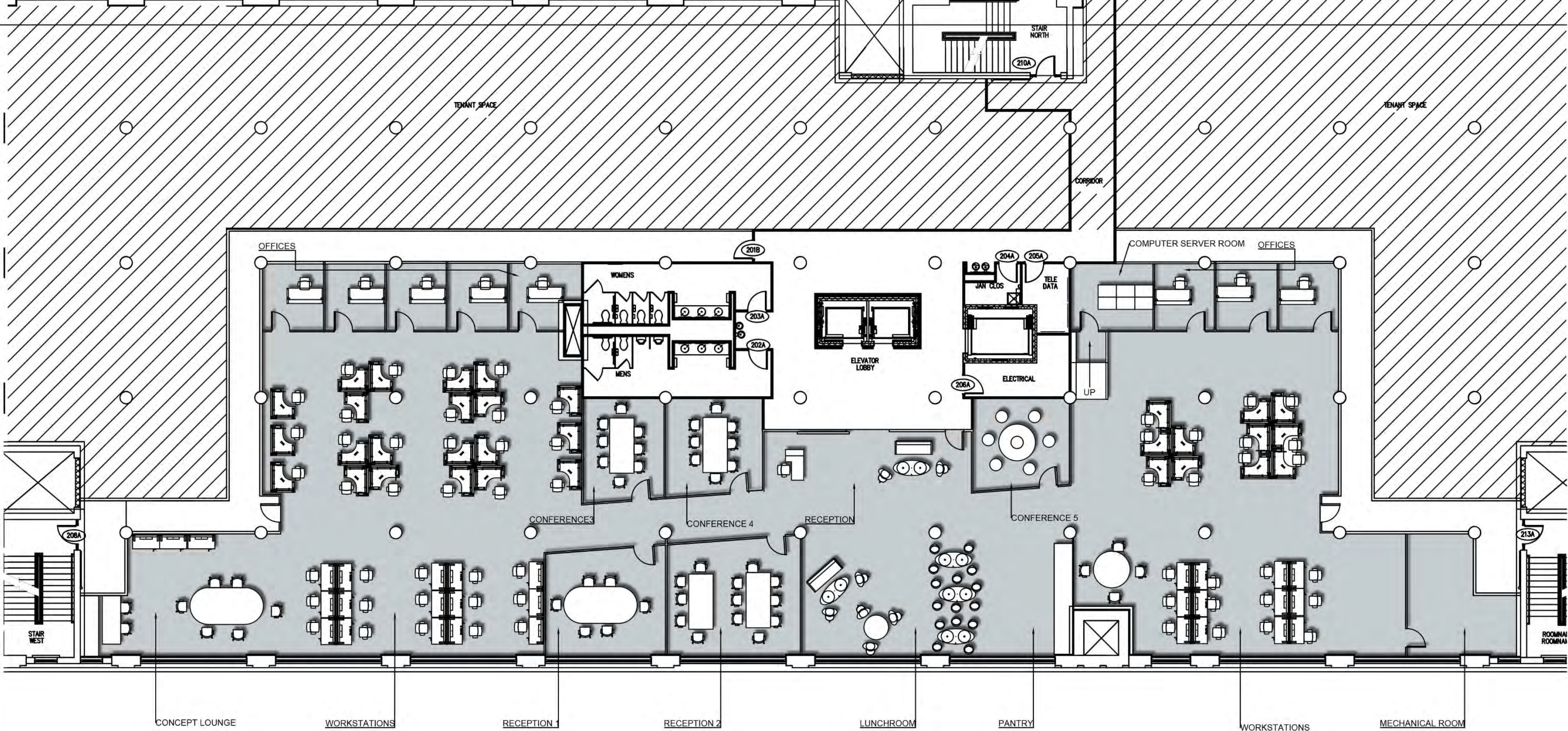
- Adaptive reuse
 - Edgeworth building already constructed
 - Old tobacco building
 - Reuse keeps the embodied energy
- Inspiration drawn from Lumen Building Wageningen, NL
 - Large windows taken advantage of
 - Natural Materials
- Natural light to carry through space
 - Large windows
 - Open areas allow light to flow
- Refabricated chairs for use
 - Use of resale furniture through Storr/Alfred Williams
 - Both Storr (Steelcase) and Alfred Williams (Herman Miller)
 - Captures embodied energy of furniture
- Light
 - Task lighting prominent
 - Lowers use of ambient lighting
 - Long life lamps
- Appliances
 - Energy Star Certified



Sustainability Statement

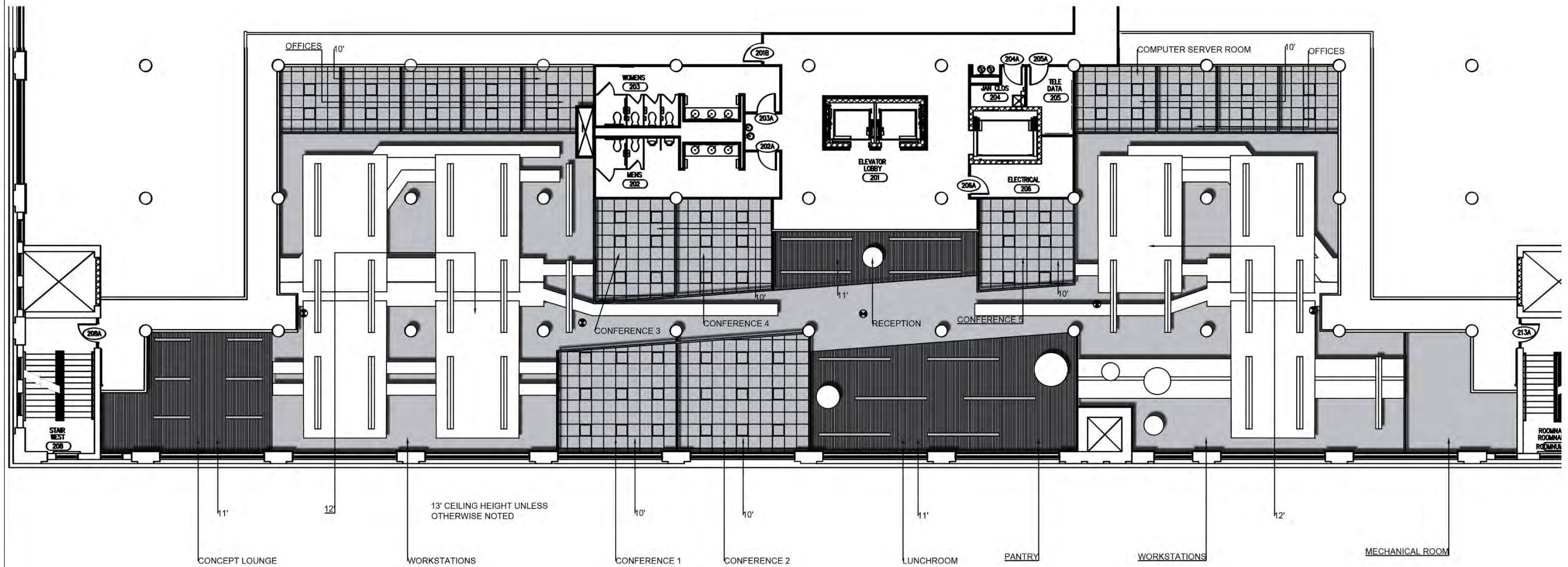
Assignment 11A

Page 2



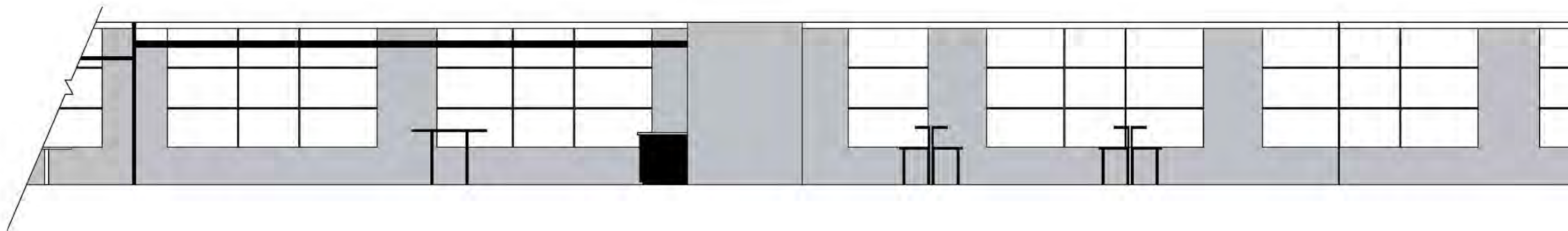
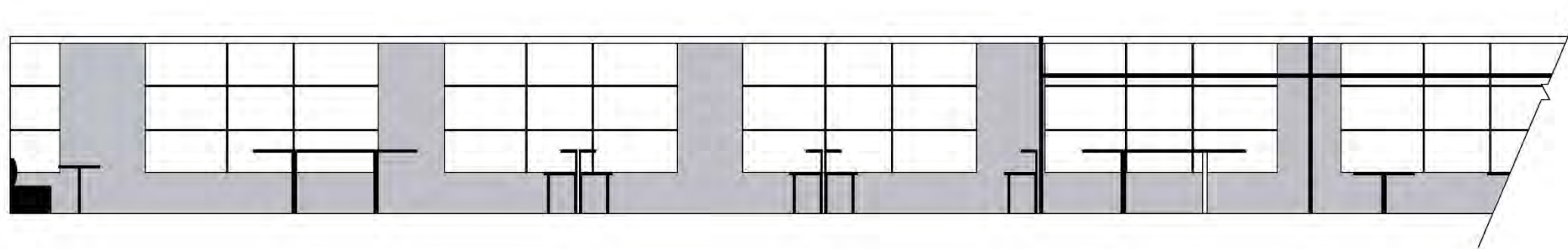
Furniture Plan

Assignment 11C



Reflected Ceiling Plan

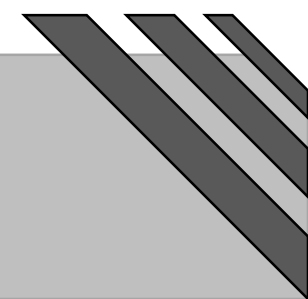
Assignment 11C

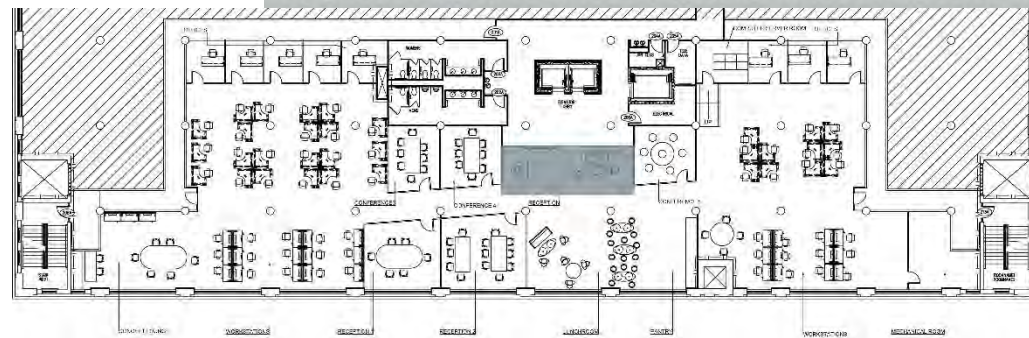
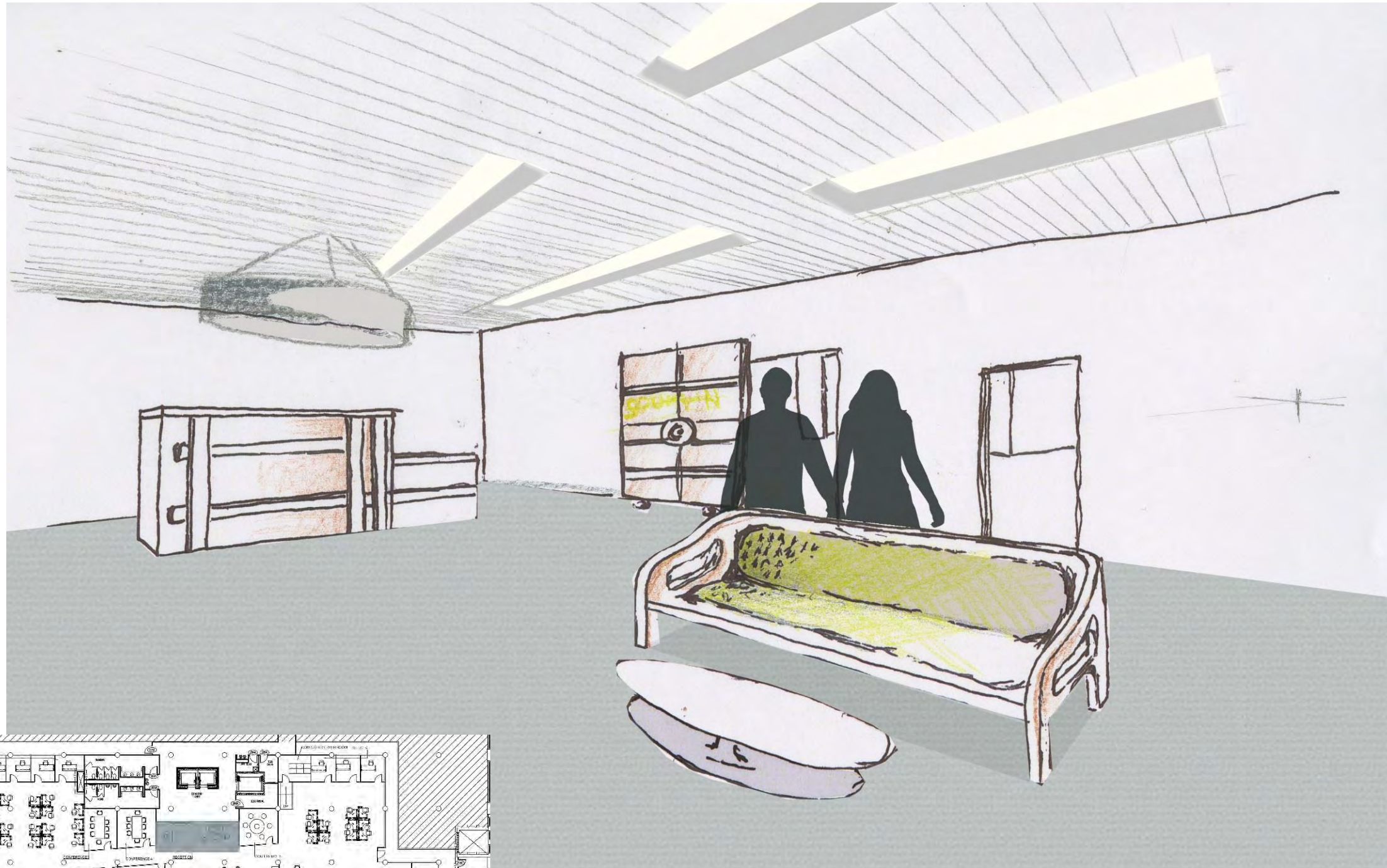


Section Plan

Assignment 11C

Page 5

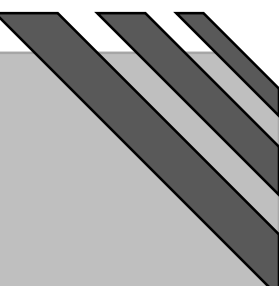


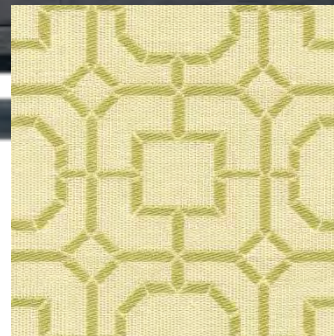
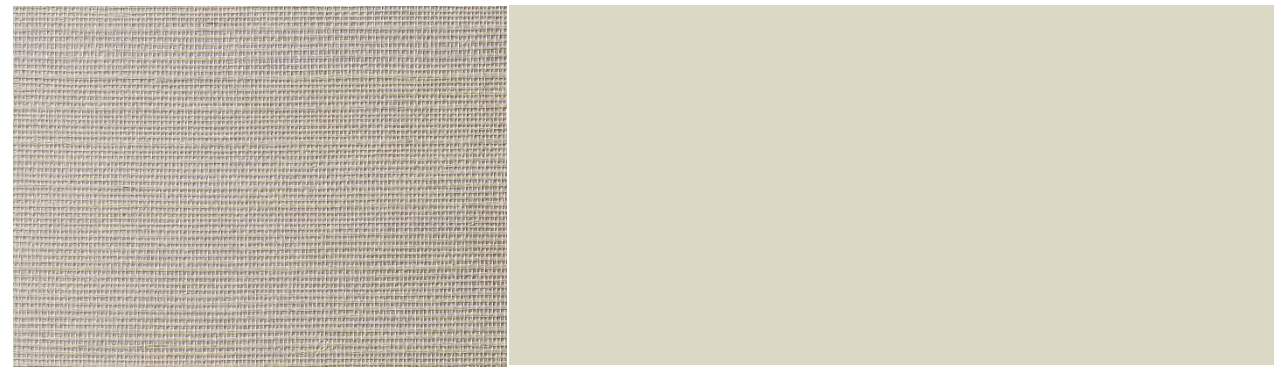


Reception Perspective

Assignment 11D

Page 6

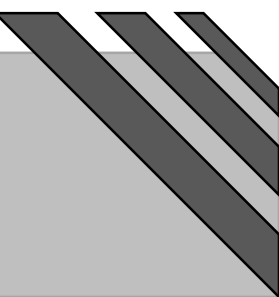


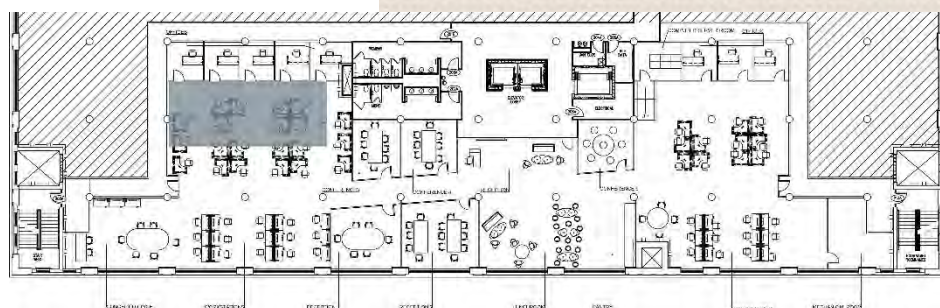


Reception Materials

Assignment 11C

Page 7

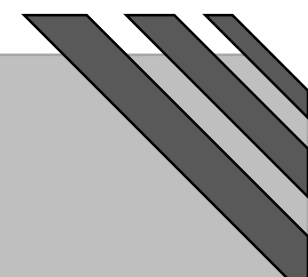


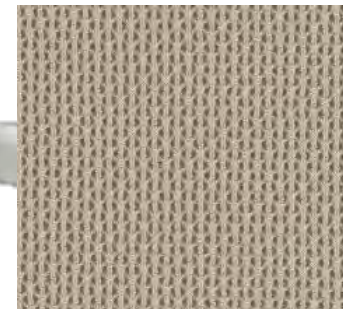


Workstations Perspective

Assignment 11C

Page 8

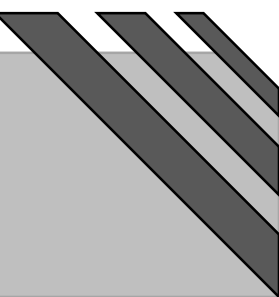


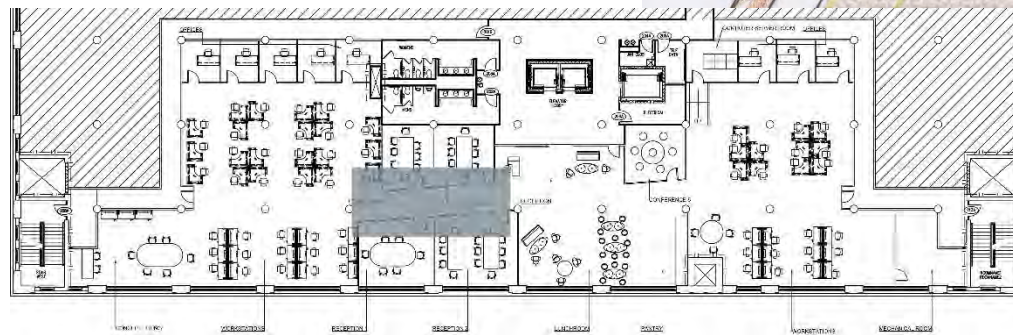
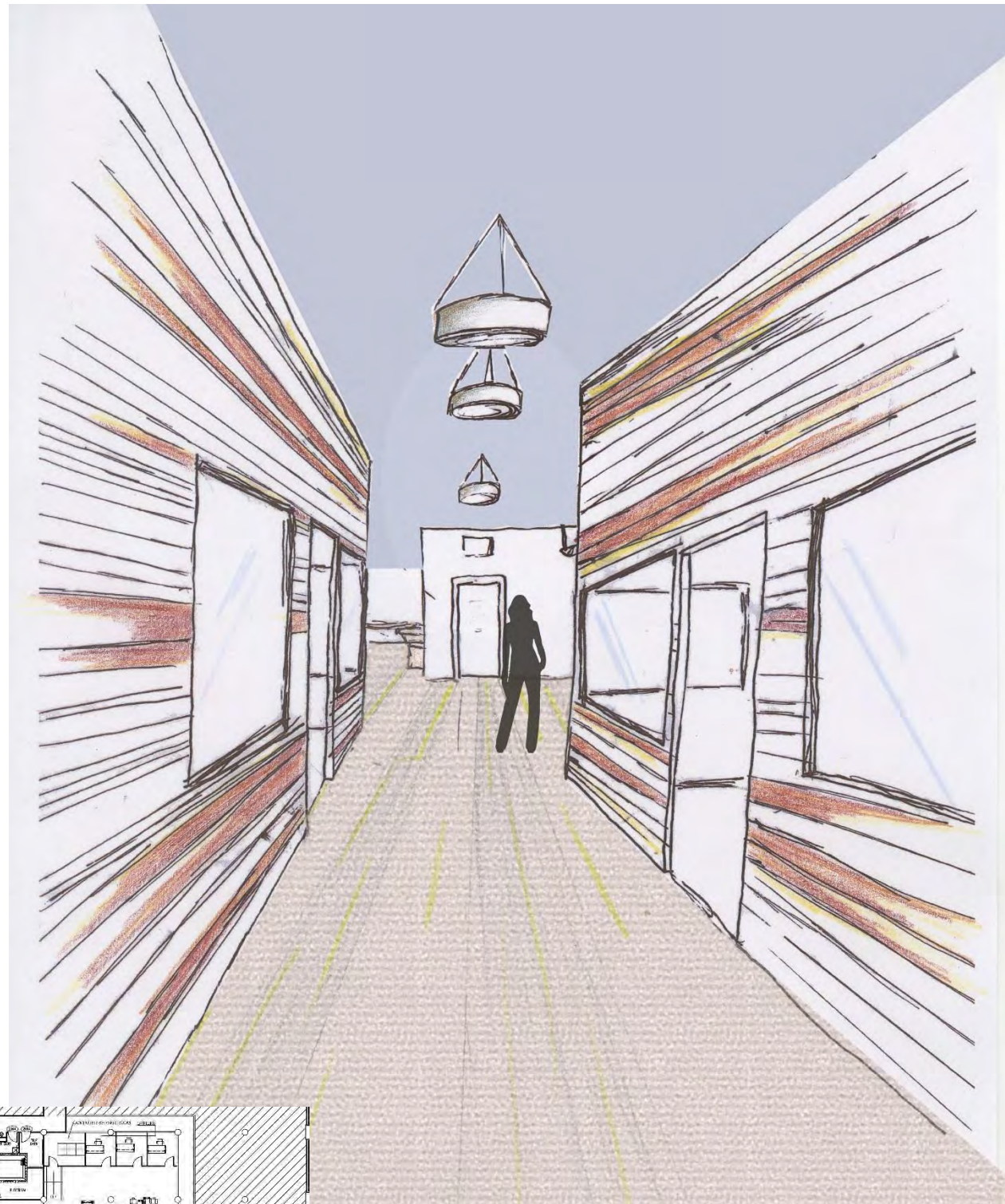


Workstations Materials

Assignment 11C

Page 9

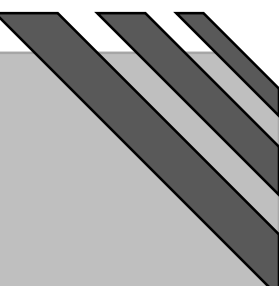




Main Corridor Perspective

Assignment 11C

Page 10

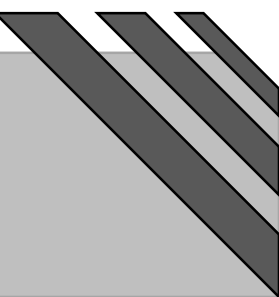


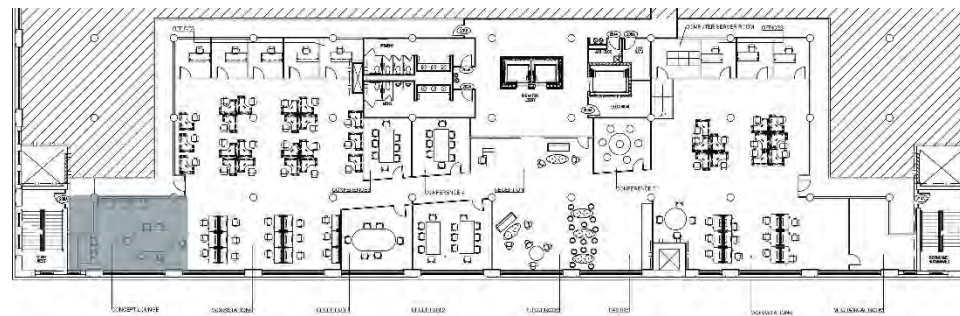


Main Corridor Materials

Assignment 11C

Page 11

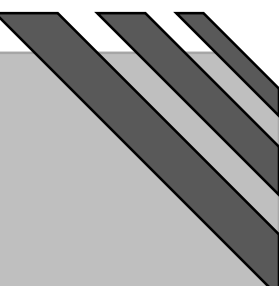


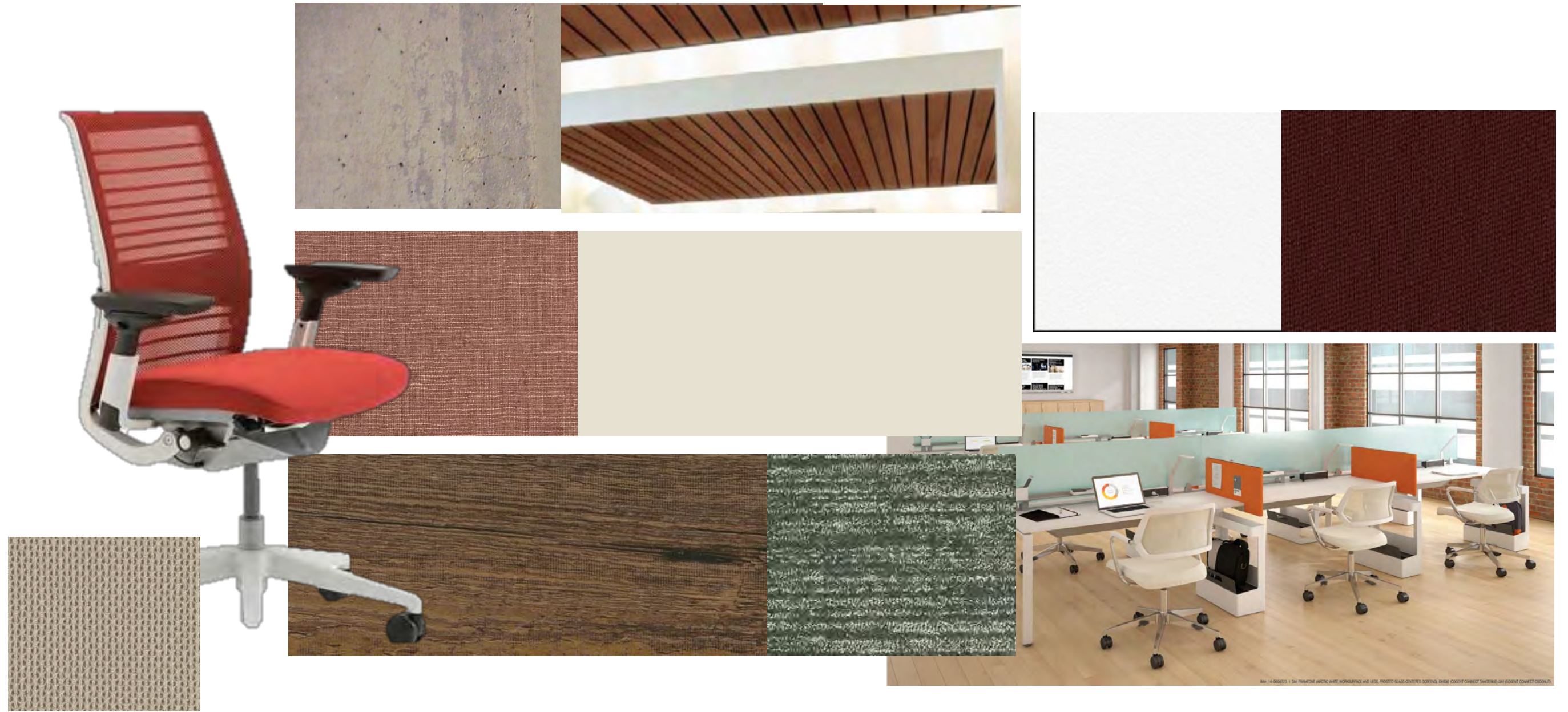


Concept Lounge Perspective

Assignment 11C

Page 12

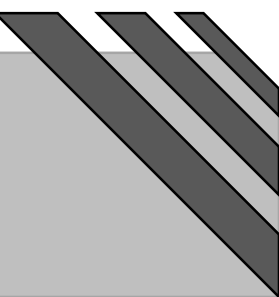


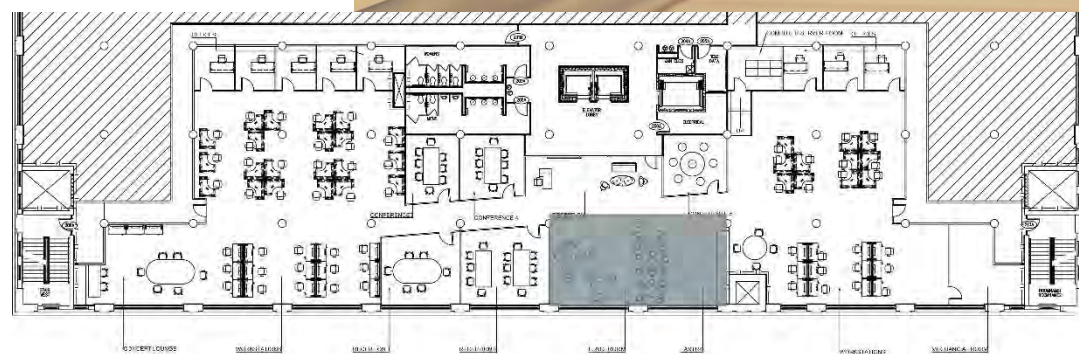


Concept Lounge Materials

Assignment IIA

Page 1





Lunchroom Model

Assignment 11C

Page 14

