


# Portfolio Three



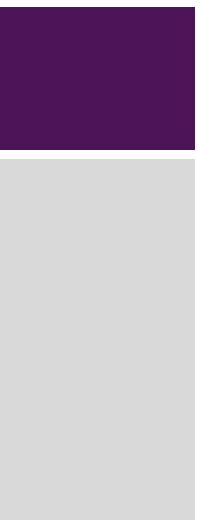
# CONCEPT STATEMENT

---

- Terrarium
- Crisp, fresh, modern
- Attract eco-friendly tenants
- Taking an outside environment and bringing it in
- Whites & earth tones
- Pops of color
- Geometric shapes & bold lines



# INSPIRATION IMAGES



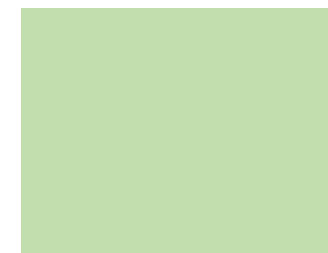
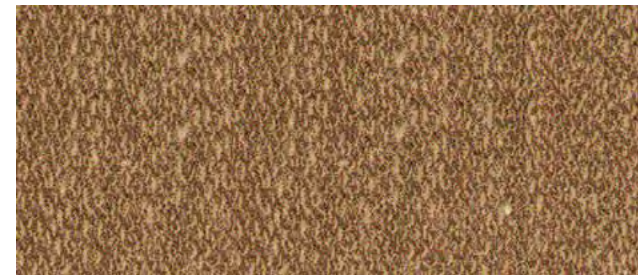
# SUSTAINABILITY STATEMENT

## LIGHTING:

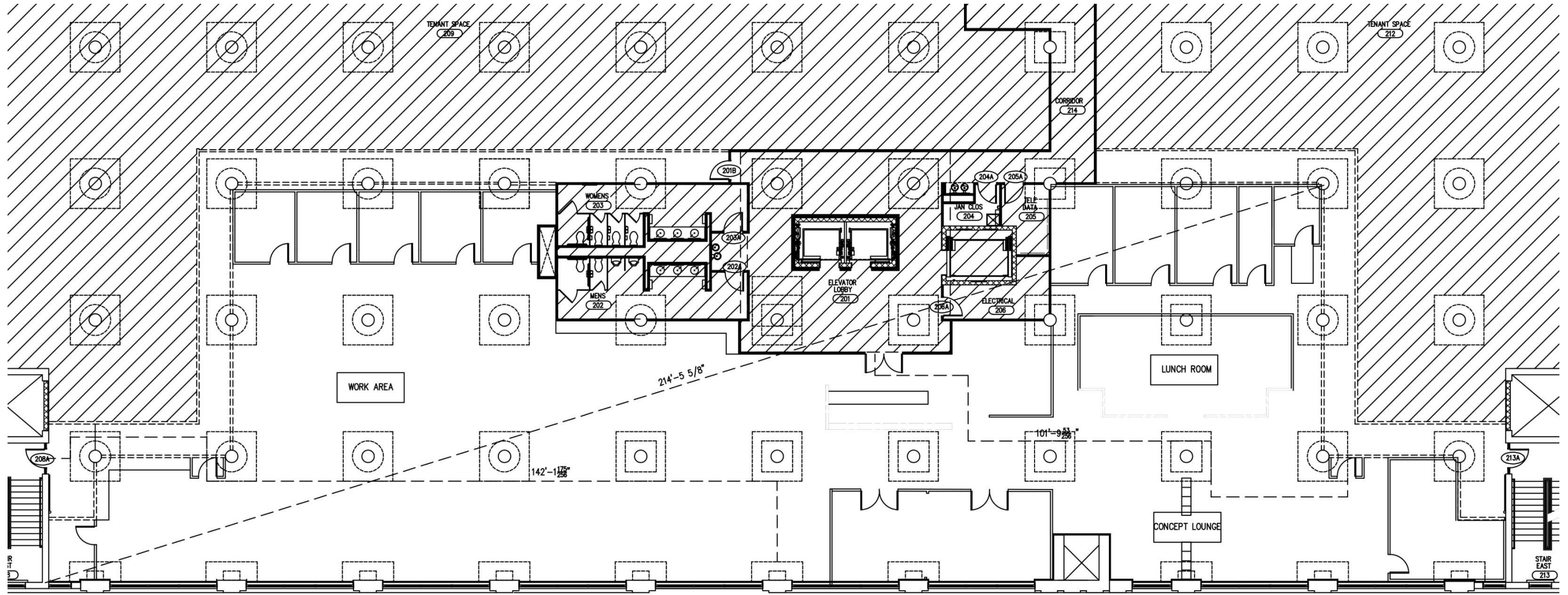
- Occupancy sensors will be put in low traffic areas (lunch room, concept lounge, breakout rooms, etc.) to ensure energy isn't being wasted
- LED lighting will be used throughout the space for low energy usage
- Task lighting will be at every work station and desk instead of huge down lighting fixtures

## MATERIALS:

- Eco-friendly materials will be used throughout the entire space to ensure a maximum amount of sustainability
- Recycled wood will be used on the partition wall in the reception area
- Fabrics woven from organic cotton, wool, or hemp will be used throughout the space instead of synthetic fabrics
- Embodied Energy



# LIFE SAFETY PLAN



# LIGHTING ANALYSIS

Maintained fc =

$$\frac{(\text{Number of lamps}) \times (\text{Initial lamp lumens}) \times \text{LLF} \times \text{CU}}{\text{Area}}$$

1.6 =

$$\frac{6 \times 135 \times .72 \times 28}{10,200}$$

10,200

RCR =

$$\frac{5(H)(L+W)}{L \times W}$$

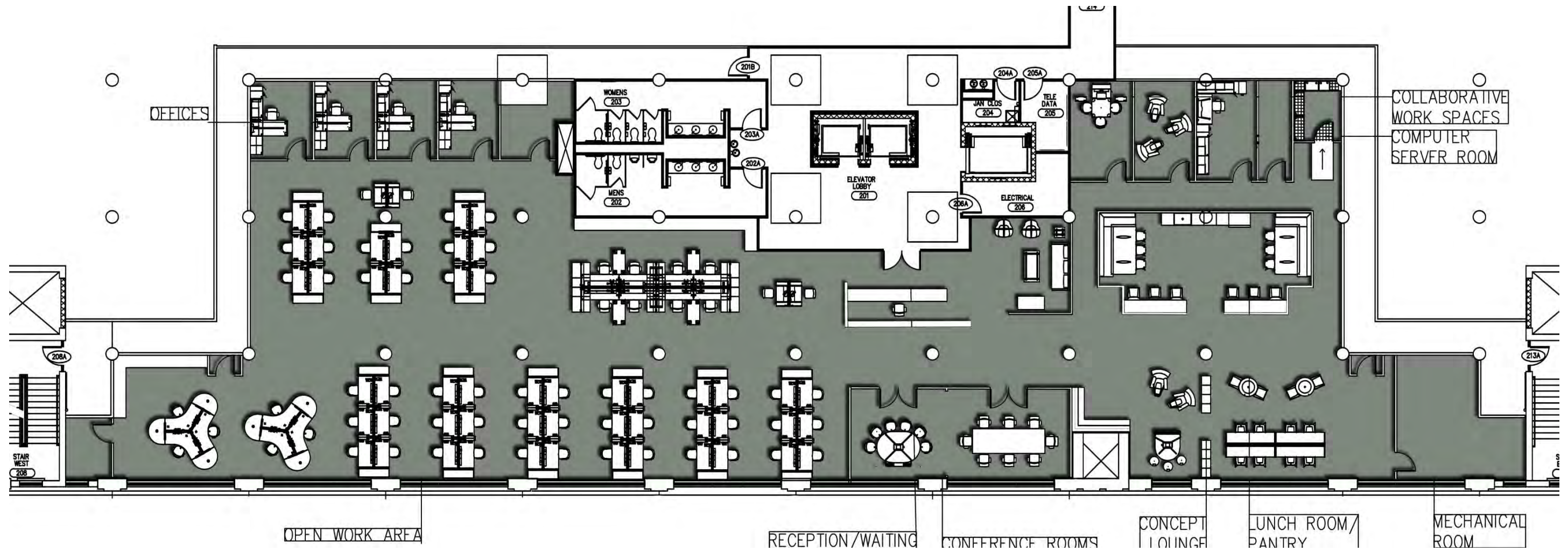
L x W

9 =

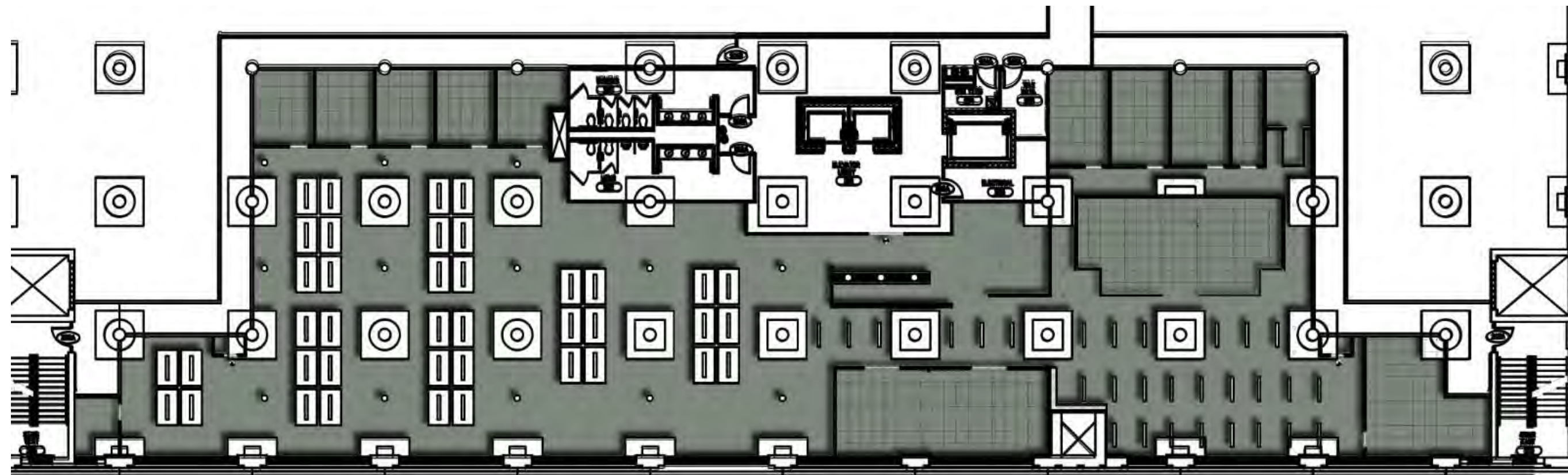
$$\frac{5(13)(15+15)}{15 \times 15}$$

15 x 15

# FURNITURE PLAN

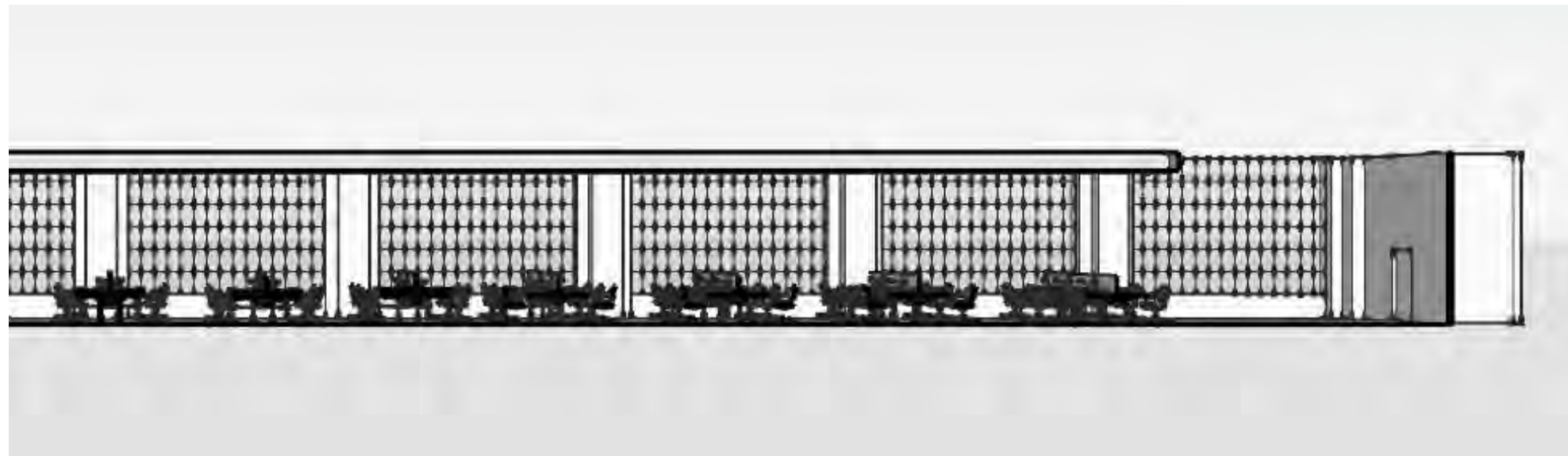
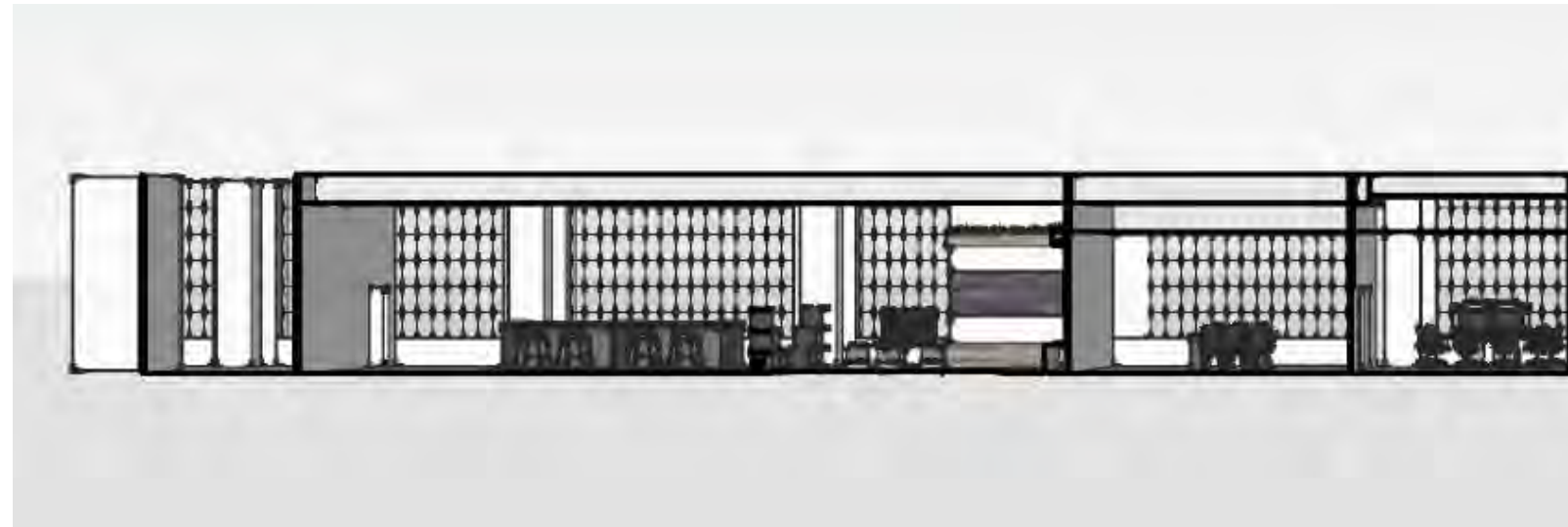


# RCP PLAN

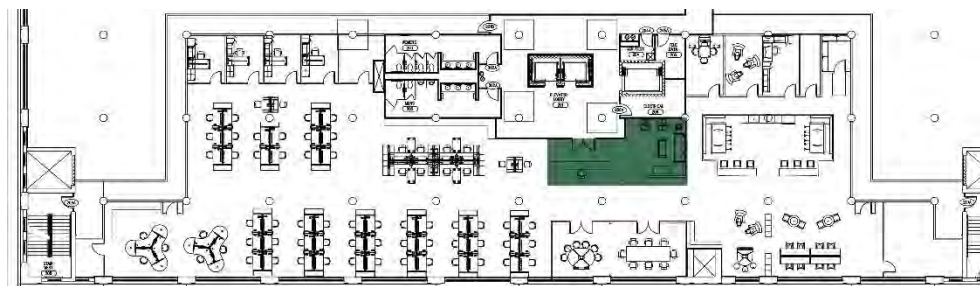
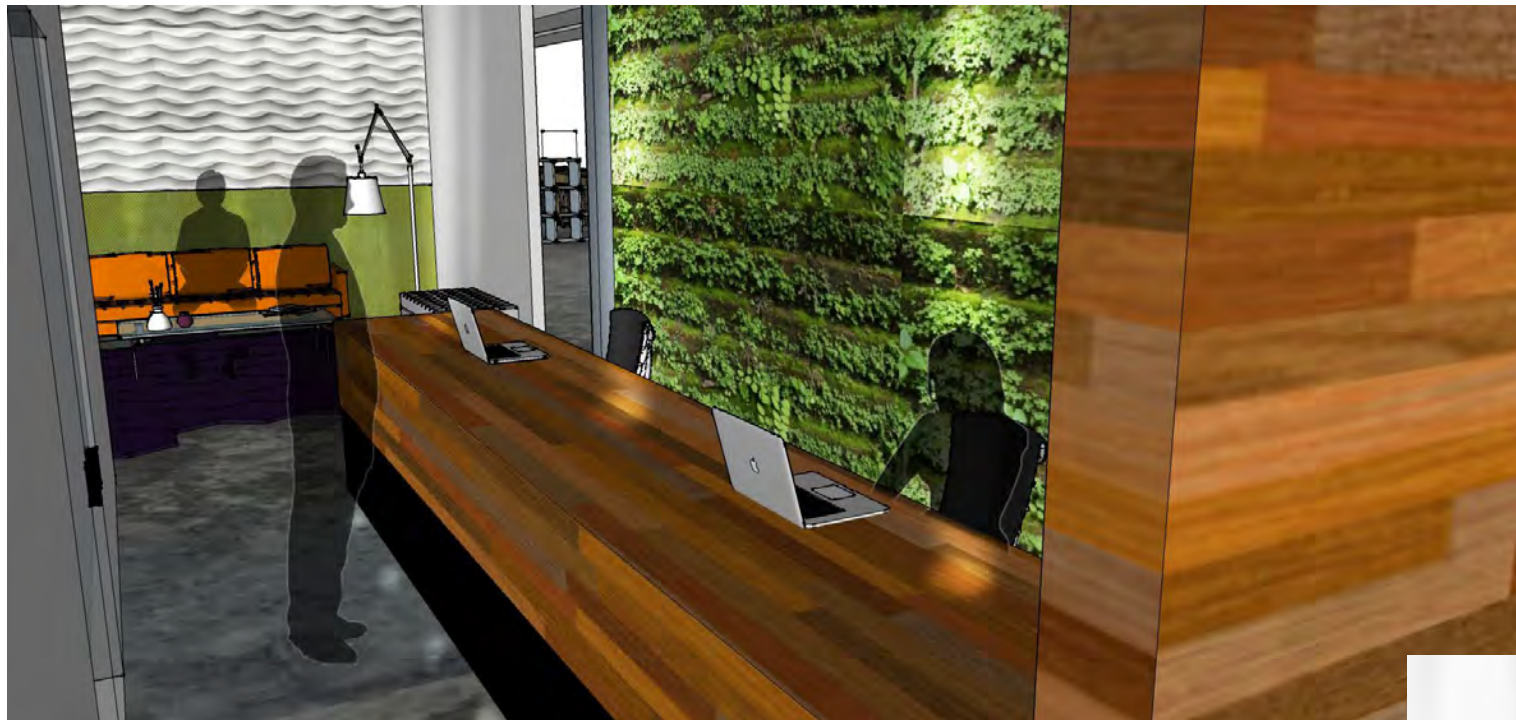




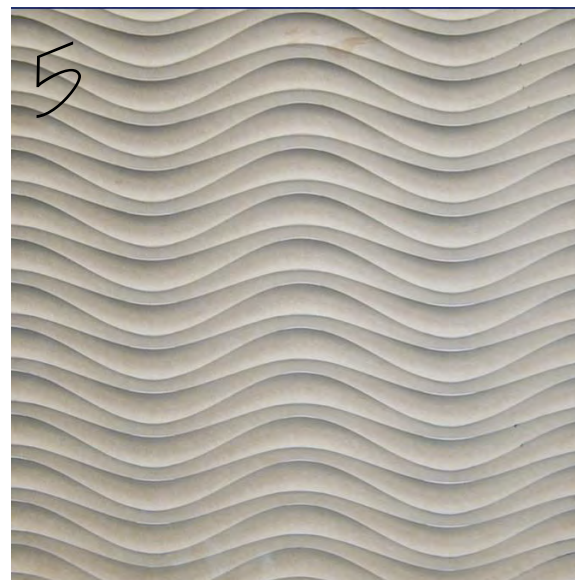
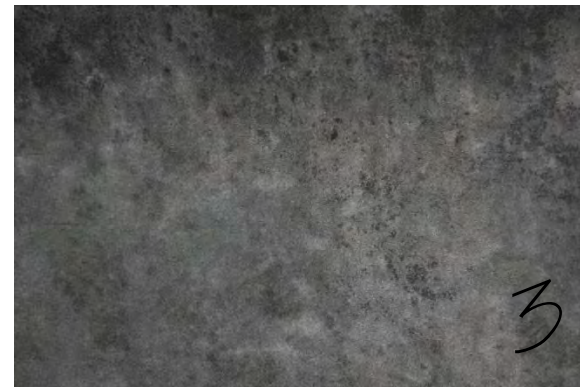
# SECTION



# ENTRY/ RECEPTION PERSPECTIVE

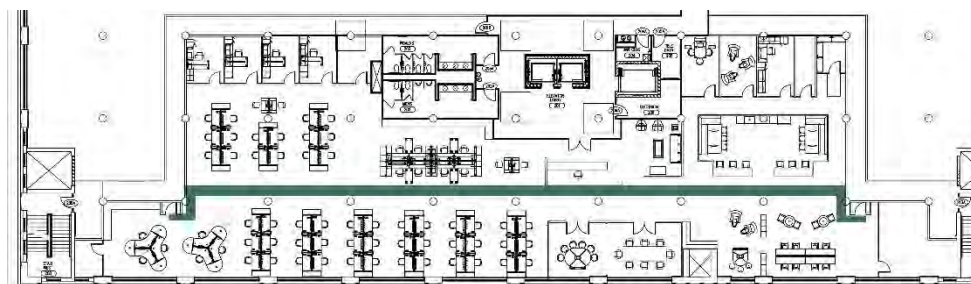


# RECEPTION/ ENTRY FURNITURE & MATERIALS



1. Recycled wood
2. Millbrae & Bob Public Space  
Steel Case
3. Polished concrete
4. Green wallpaper
5. White wall panel
6. Live green wall
7. Steel Case Leap Chair

# MAIN CIRCULATION PERSPECTIVE



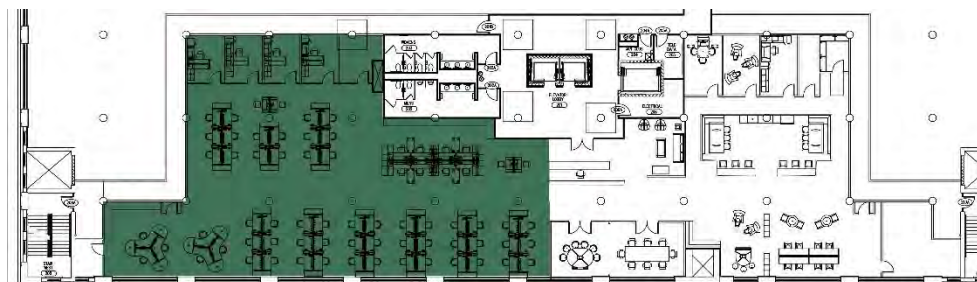
# MAIN CORRIDOR FURNITURE & MATERIALS



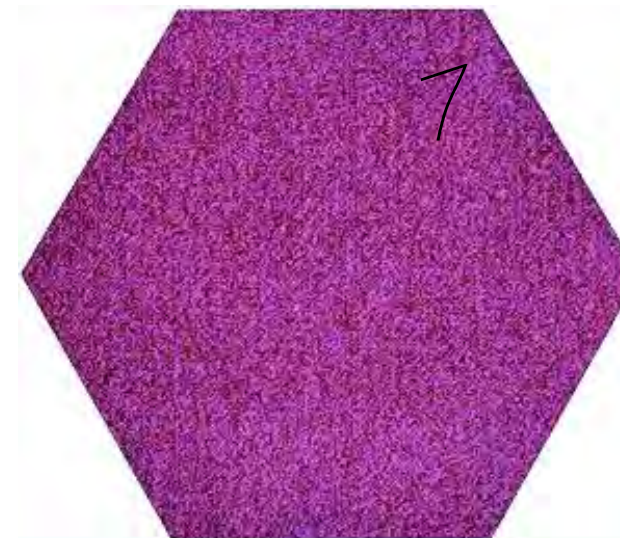
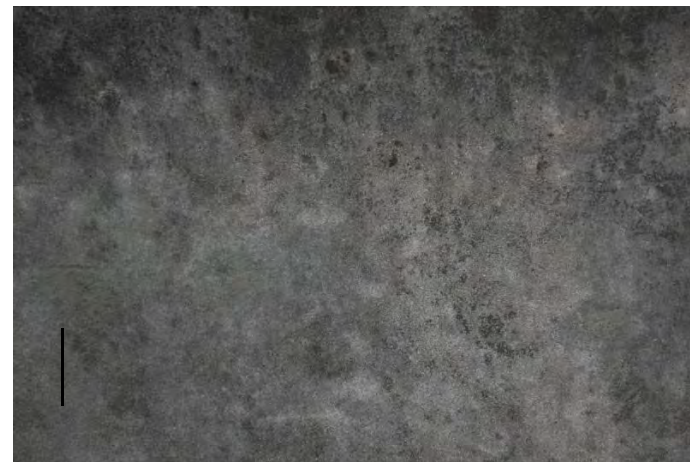
1. Polished concrete
2. Orange carpet
3. Green striped wallpaper



# OPEN WORK AREA PERSPECTIVE

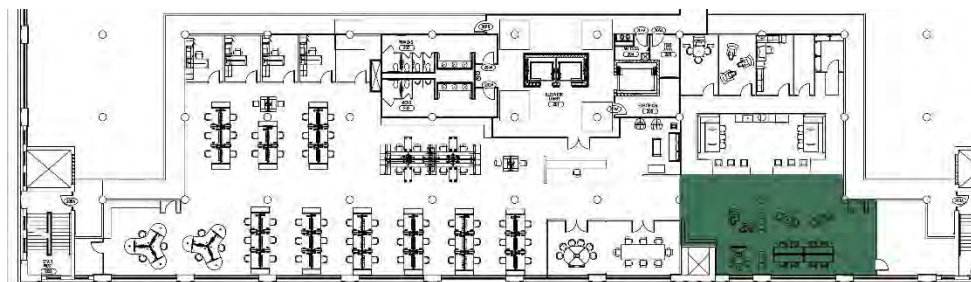


# OPEN WORK AREA FURNITURE & MATERIALS



- 1. Polished concrete
- 2. Steel Case Nomads 6
- 3. Orange carpet
- 4. Plant wall art
- 5. Steel case Function groups  
c: scape 4
- 6. Wall panel
- 7. Shaw carpet tile

# CONCEPT LOUNGE PERSPECTIVE





# CONCEPT LOUNGE FURNITURE & MATERIALS



1. Steel Case Wing & Free Stand Personal in orange fabric
2. Orange carpet
3. Recycled wood
4. Polished concrete
5. Wall art
6. Steel Case Scape018 in green fabric