



# PORTFOLIO 3

*IDSN 3600*

*FALL 2014*

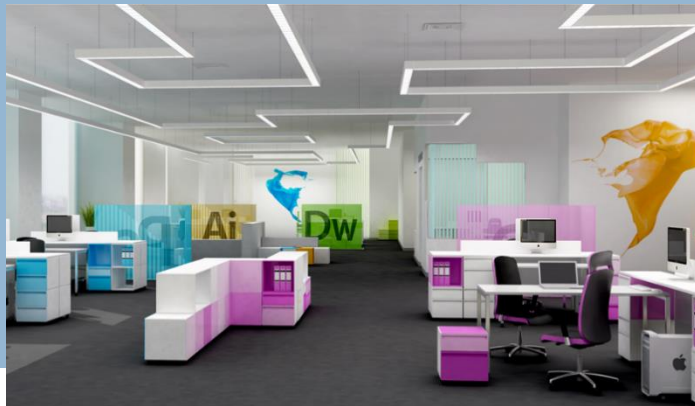
LINNEA THOMAS



# CONCEPT STATEMENT



- Open space for workers
  - A lot of glass walls
  - Vibrant colors
- A lounge for them to think and communicate
  - Lots of light
- Keep the integrity of the space
- Mixture of clean and abstract lines

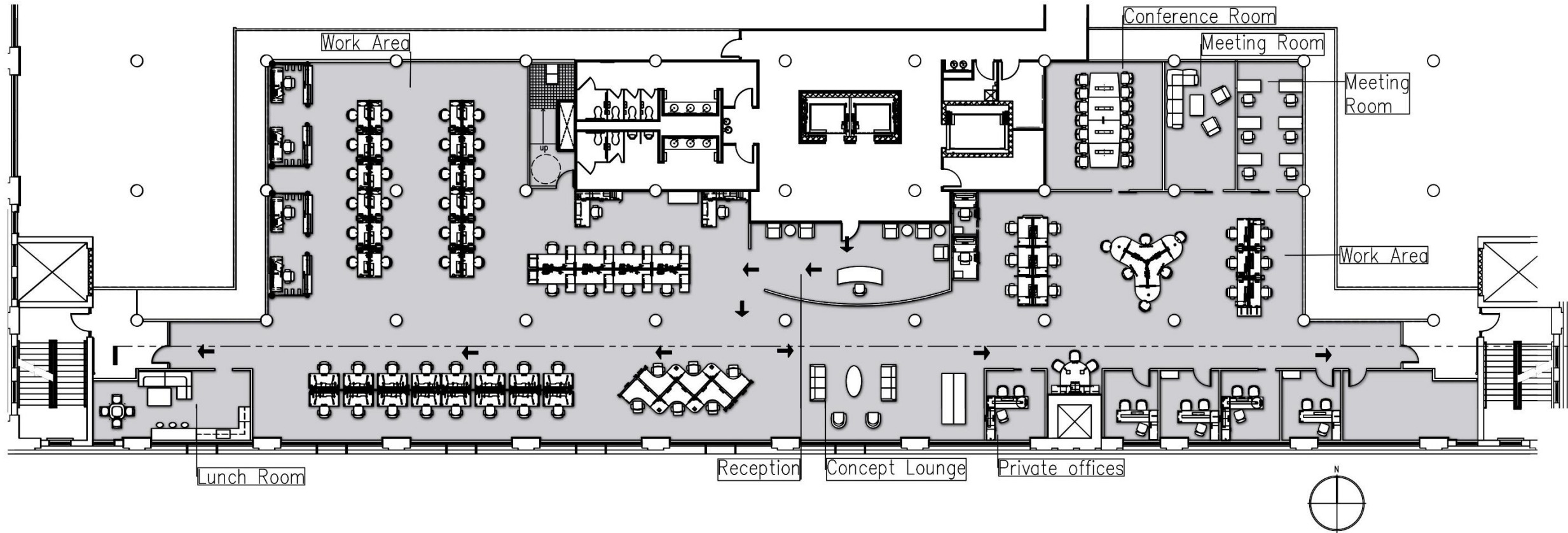


# SUSTAINABILITY STATEMENT

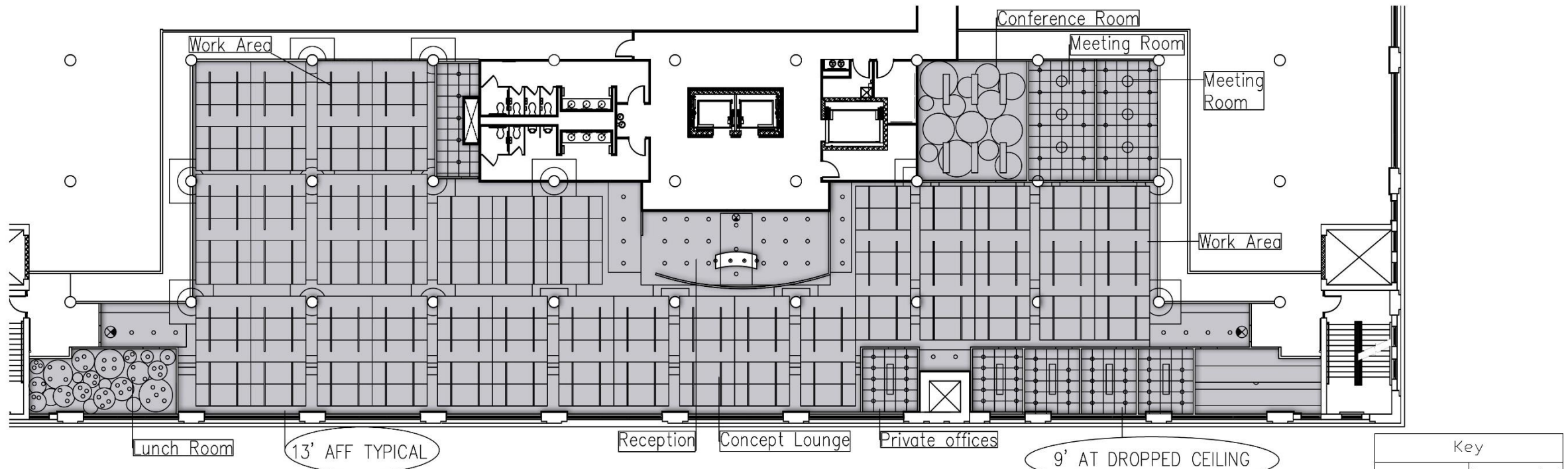
- Recyclable materials (wood, steel, aluminum)
- Light sensors that turn on 30 minutes before the work day and 30 minutes after the work day
- Textiles will be durable for the duration of its use
- This space is embodied energy
- Luxury vinyl tile that is sustainable and durable.



# RENDERED FURNITURE PLAN



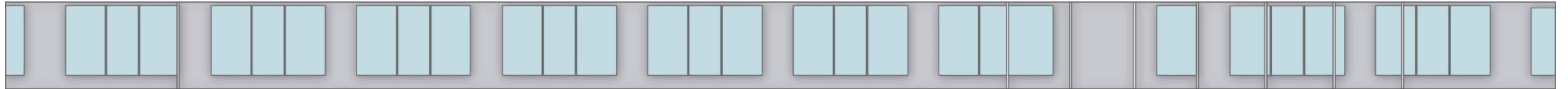
# RENDERED RCP



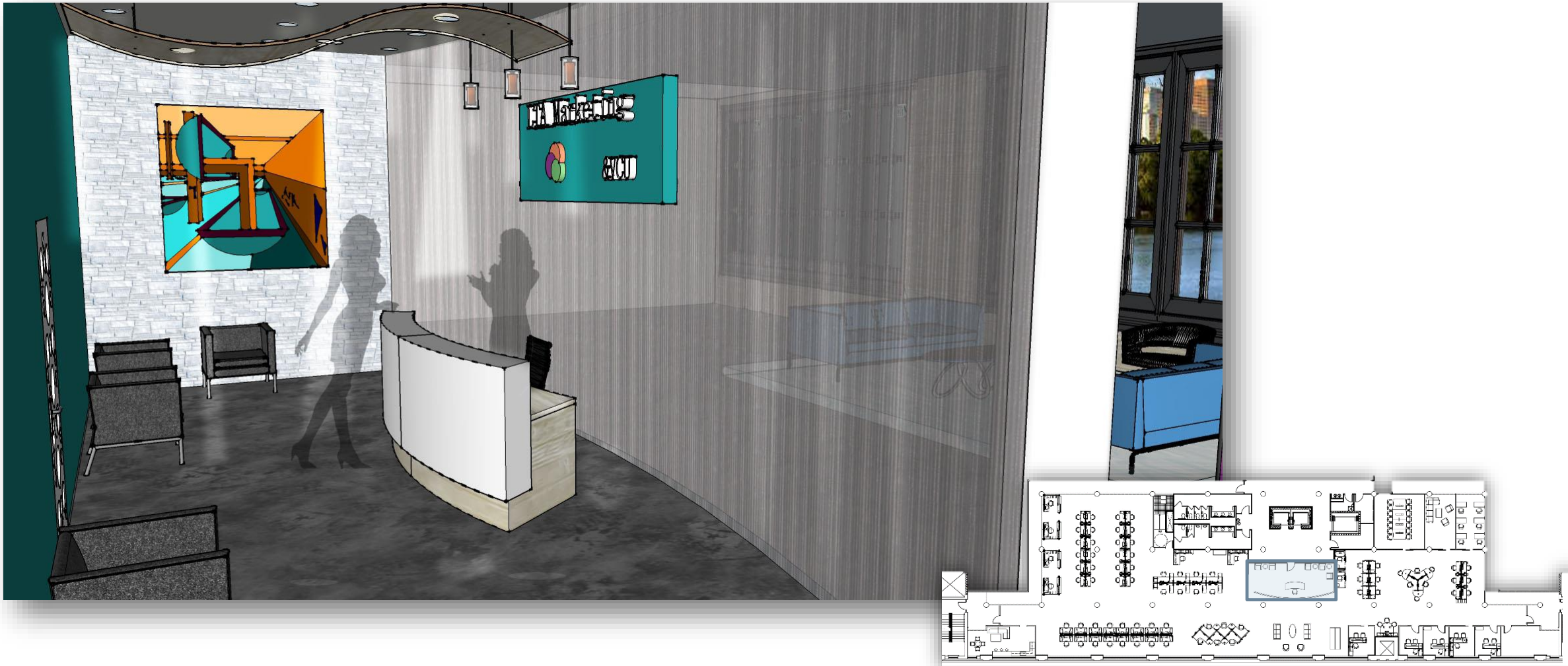
Key	
□	Suspended
○	Pendant
•	Mini Pendant
◦	Recessed
—	Suspended
⊗	Exit Sign



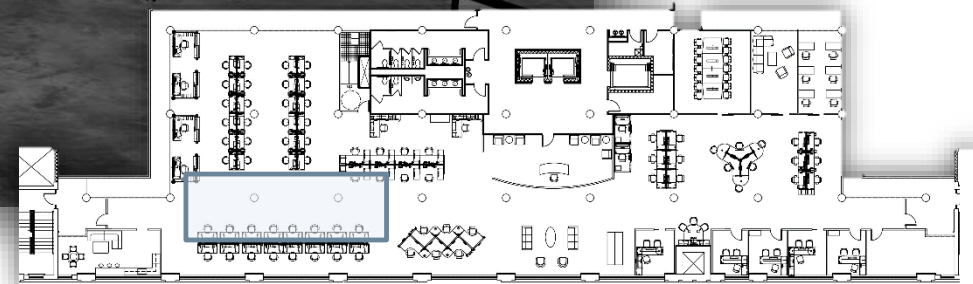
# RENDERED SECTION



# RECEPTION PERSPECTIVE

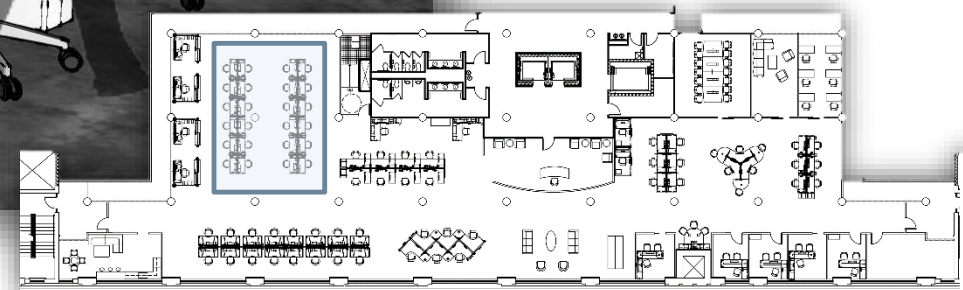


# CIRCULATION PERSPECTIVE

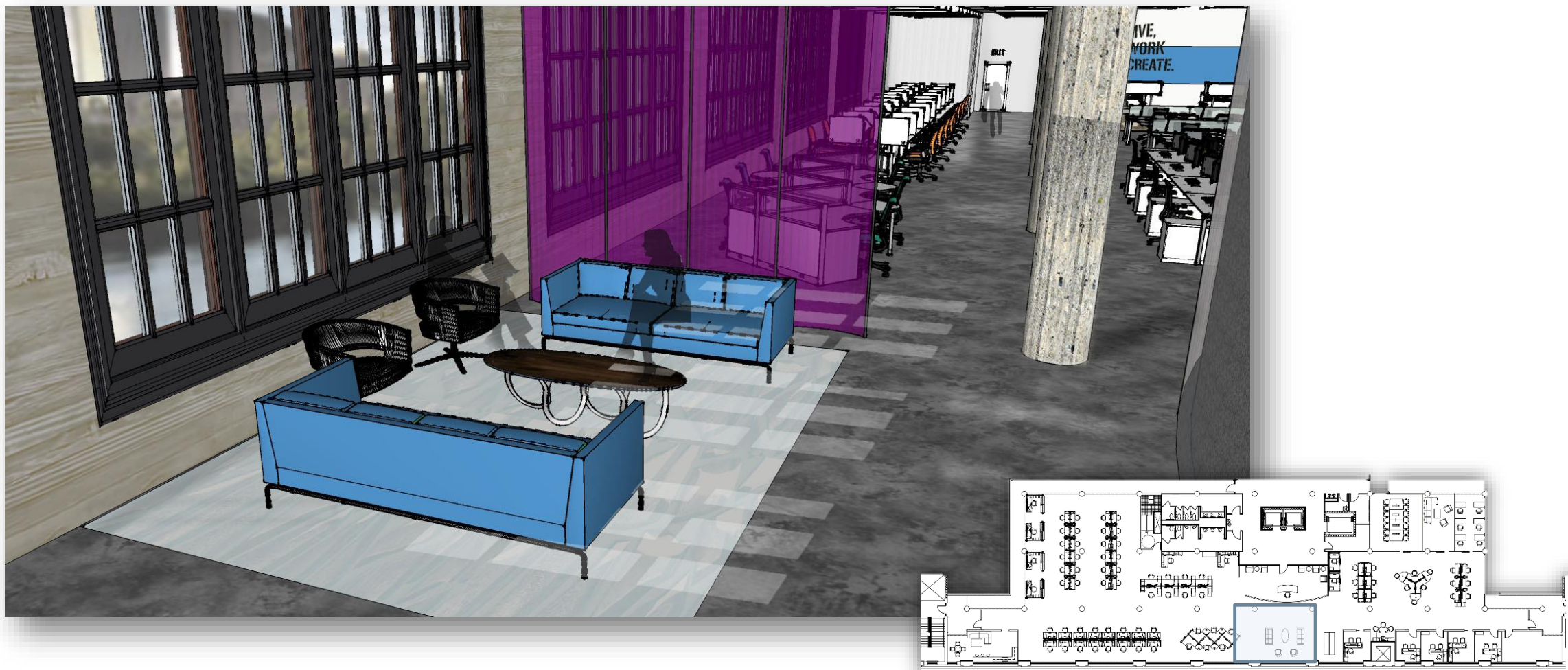




# WORKSTATION PERSPECTIVE



# LOUNGE PERSPECTIVE



# FINISHES

