

IDSN 3600: SYSTEMS

FALL 2015

PORTFOLIO 1

MATTHEW BRACKETT

-Coworking Space

- Office space located in Richmond Virginia in the Edgeworth Building. It features an open concrete space with uniform columns and large windows facing the river.
- Aesthetically, the space will feature a mix of modern and industrial elements.
- The design will incorporate a variety of textures unified by clean minimalist lines and a neutral color pallet with accents of graphic designs.
- Office space designed to encourage interaction between all members of the work team.
- Floor plan design includes thoughtful planning and division (both defined and undefined) of space.
- A variety of spaces are given specific purposes to encourage movement throughout office. Spaces including:
 - Conference/meeting (different sizes)
 - Private work space
 - Public/ communal work space
 - Areas for relaxation
 - Kitchen
 - Areas of natural light, artificial light and dim light to cater to all employee's comfort levels.
- Goal of design: to create an interactive space to encourage a contrast of both energy and calmness through floor plan design and use of finishes. Employees will be engaged with each other while still having the option of complete privacy.





IDSN 3600 PORTFOLIO 1: INSPIRATION BOARD
MATTHEW BRACKETT

Summary

Personnel Totals Per Department	Personnel Totals		Personnel				Support	Total	Circulation	Carpetable
	Current	Future	Sq. Feet	Computer	Printer	Fax	Sq. Feet	Sq. Feet		Sq. Feet
Executive	2	2	272	4	2	1	-	272	1.54	2,279
Administration	1	1	156	4	1		210	366	1.54	564
Account Admin	1	1	408	15	3	3	164	572	1.54	628
Creative Services	4	86	3,160	3	1		-	3,160	1.54	4,866
Support	-	-	-	-	-	-	1,580	1,580	1.54	2,433
Totals:	8	90	3,996	26	7	4	1,954			10,771

Executive

PERSONNEL

Position	Personnel Totals		Unit Square Ft.		Extended Sq. Feet	Equipment			Notes
	Current	Future	Office	Workstation		PC	Printer	Fax	
					0				
					0				
					0				
					0				
					0				
Directors	2	2	100		200	2	1	1	Private office for team
Administrative Assistant	2	2		36	72	2	1		Locate directly outside Mgr office
					0				
					0				
Personnel Totals:	4	4			272	4	2	1	

Department Summary

Information:	
Personnel	272 Square Ft.
Equipment	0 Square Ft.
Sub Total:	272 Square Ft.
Circulation	1.54
Total Carpetable:	2279 Square Ft.

Interviewee:

Interview Date: _____
 Revision Submitted: _____
 Sign Off: _____

SUPPORT/EQUIPMENT SPACES

Space	Support/Equipment		Unit Square Feet	Extended Sq. Feet	Location	Notes
	Current	Future				
Waiting Area	1	0	200	0	Visible from Admin Asst	Seating for 4 guests
Pantry	0	0	100	0	Near kitchen	
Executive Conference Room	1	0	400	0	Adjacent to Waiting Area	Full AV
Support Totals:				0		

Department Notes:

Entire company is progressive

Administration

PERSONNEL

Position	Personnel Totals		Unit Square Ft.		Extended Sq. Feet	Equipment			Notes
	Current	Future	Office	Workstation		PC	Printer	Fax	
					0				
Finance					0				
Manager	0	1		48	48	1			
Clerical	2	3		36	108	3	1		
					0				
					0				
					0				
Personnel Totals:	2	4			156	4	1	0	

Department Summary

Information:

Personnel 156 Square Ft.

Equipment 210 Square Ft.

Sub Total: 366 Square Ft.

Circulation 1.54

Total Carpetable: 563.64 Square Ft.

Interviewee:

Interview Date:

Revision Submitted:

Sign Off: _____

SUPPORT/EQUIPMENT SPACES

Space	Support/Equipment		Unit Square Feet	Extended Sq. Feet	Location	Notes
	Current	Future				
				0		
Finance				0		
File Drawers	50	50	1.8	90	Lockable room	5-Hi cabinets
Equipment	1	1	120	120	Next to work area	3 Printers, shredder, work counter
Support Totals:				210		

Department Notes:

Account Admin

PERSONNEL

Position	Personnel Totals		Unit Square Ft.		Extended Sq. Feet	Equipment			Notes
	Current	Future	Office	Workstation		PC	Printer	Fax	
					0				
Account Manager	4	3	100		300	12			
Administrative Assistant	1	3		36	108	3	3	3	Shared by entire Production staff
					0				
					0				
					0				
Personnel Totals:	5	6			408	15	3	3	

Department Summary

Information:

Personnel 408 Square Ft.

Sub Total: 408 Square Ft.

Circulation 1.54

Total Carpetable: 628.32 Square Ft.

Interviewee:

Interview Date:

Revision Submitted:

Sign Off: _____

SUPPORT/EQUIPMENT SPACES

Space	Support/Equipment		Unit Square Feet	Extended Sq. Feet	Location	Notes
	Current	Future				
Equipment	1	1	64	64	Near Admin Assts	Copier, work counter
Digital Storage	0	1	100	100		Shelving; can be spread throughout
Support Totals:				164		

Department Notes:

Creative Services

PERSONNEL

Position	Personnel Totals		Unit Square Ft.		Extended Sq. Feet	Equipment			Notes
	Current	Future	Office	Workstation		PC	Printer	Fax	
					0				
Team Manager	1	1	100		100	2	1		
					0				
Team Assistant	3	85		36	3060	1			
					0				
					0				
					0				
Personnel Totals:	4	86			3160	3	1	0	

Department Summary

Information:

Personnel 3160 Square Ft.
 Equipment 0 Square Ft.
Sub Total: 3160 Square Ft.
 Circulation 1.54

Total Carpetable: 4866.4 Square Ft.

Interviewee:

Interview Date:
 Revision Submitted:
 Sign Off: _____

SUPPORT/EQUIPMENT SPACES

Space	Support/Equipment		Unit Square Feet	Extended Sq. Feet	Location	Notes
	Current	Future				
Concept Lounge	0	0	500	0		
Work Area	0	0	500	0	Adjacent to Teams	Work counters
Storage	0	0	200	0	Next to Work Area	Shelving
Support Totals:				0		

Department Notes:

Support

PERSONNEL

Position	Support/Equipment		Unit Square Ft.	Extended Sq. Feet	Location	Notes
	Current	Future				
				0		
				0		
				0		
				0		
				0		
				0		
				0		
Personnel Totals:	0	0		0		

Department Summary

Information:

Personnel 0 Ft.
 Equipment 1580 Ft.
Sub Total: 1580 Ft.
 Circulation 1.54
 Square

Total Carpetable: 2433.2 Ft.

Interviewee:

Interview Date:
 Revision Submitted:
 Sign Off: _____

SUPPORT/EQUIPMENT SPACES

Space	Support/Equipment		Unit Square Feet	Extended Sq. Feet	Location	Notes
	Current	Future				
Reception	1	1	200	200	Direct access to Broadcast, Executive, Mktg	Waiting for 6
Conference Room	1	2	100	200	Shared by all areas	Full AV
Computer server	1	1	80	80	Near Account Admin	Raised floor, secure, 3 racks
Copy/Fax Station	1	2	100	200	Spread throughout	Work counter
Pantry	1	2	100	200	Spread throughout	Coffee, sink, refrigerator, cabinets
Eat-in Kitchen	0	1	400	400		Full kitchen, seating
Mechanical Room	0	1	300	300	Near Base Building air supply	Supplemental Air
Support Totals:				1580		

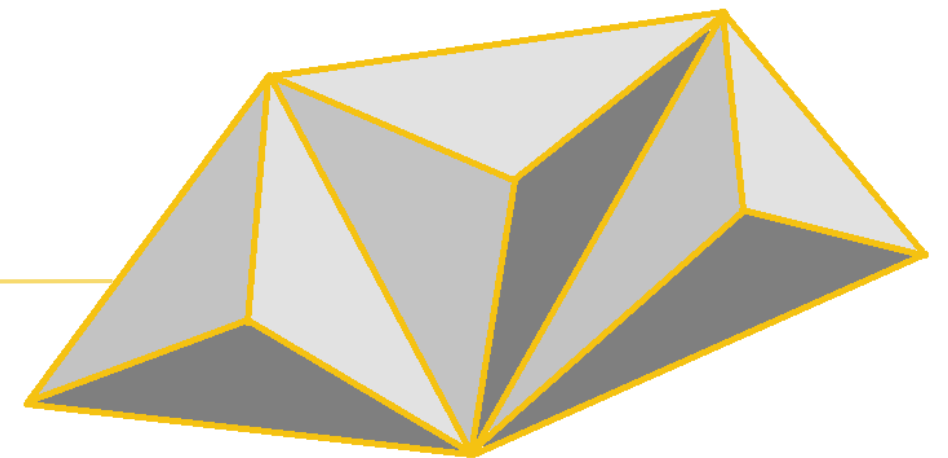
Department Notes:

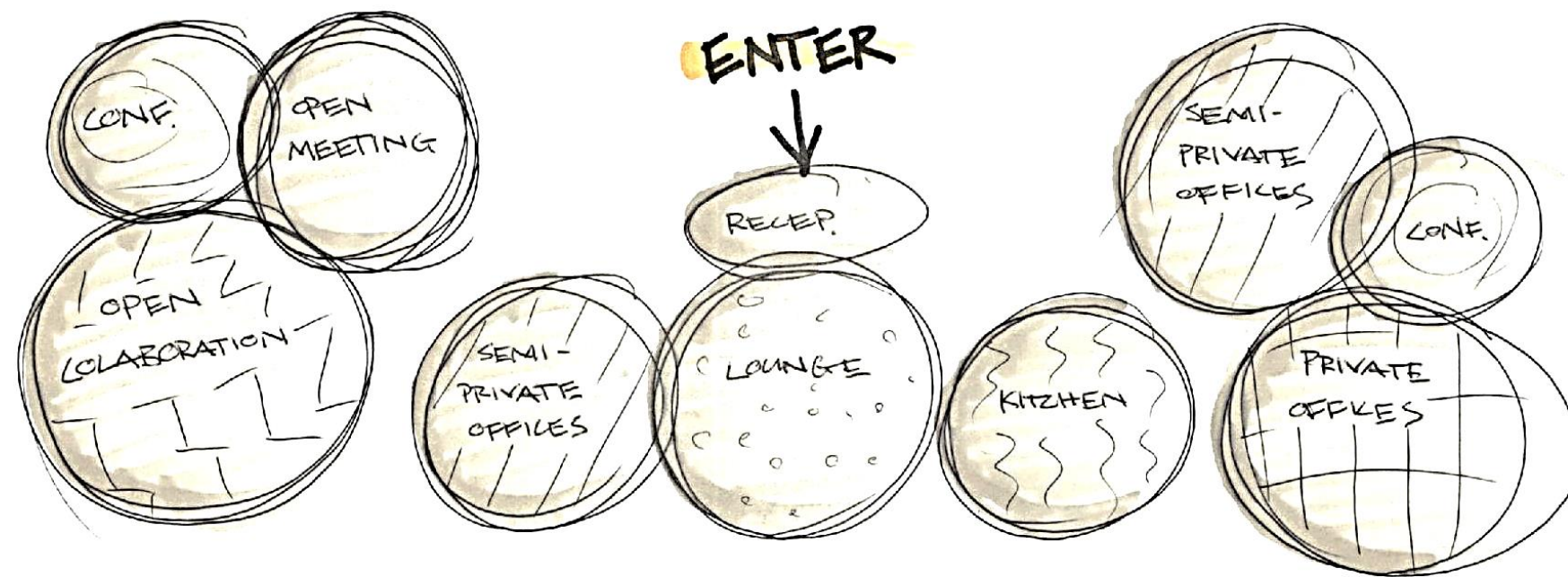
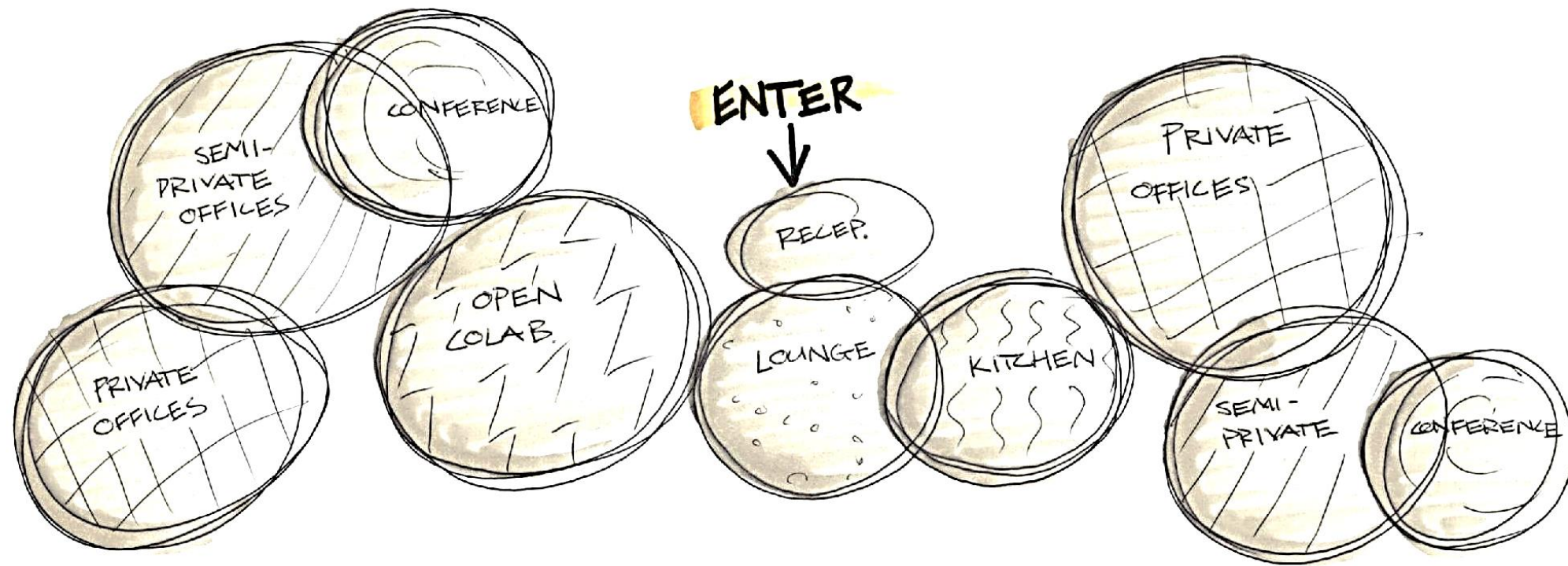
IDSN 3600: SYSTEMS

FALL 2015

PORTFOLIO 2

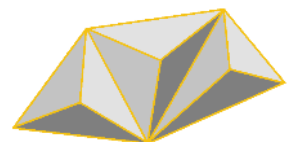
MATTHEW BRACKETT

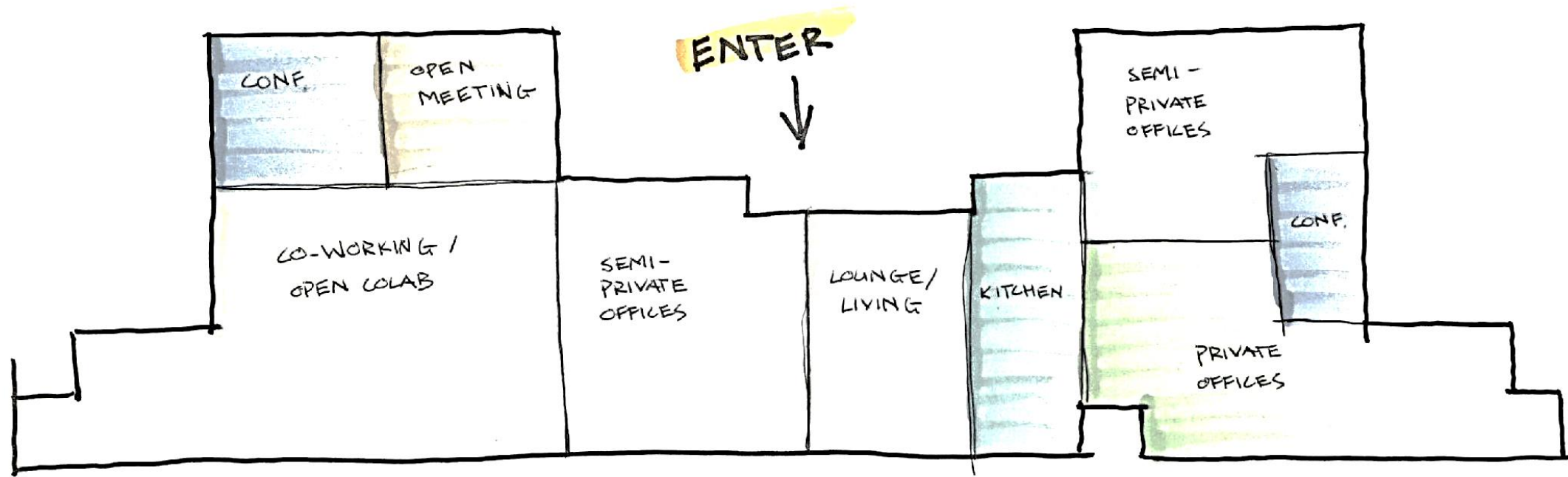
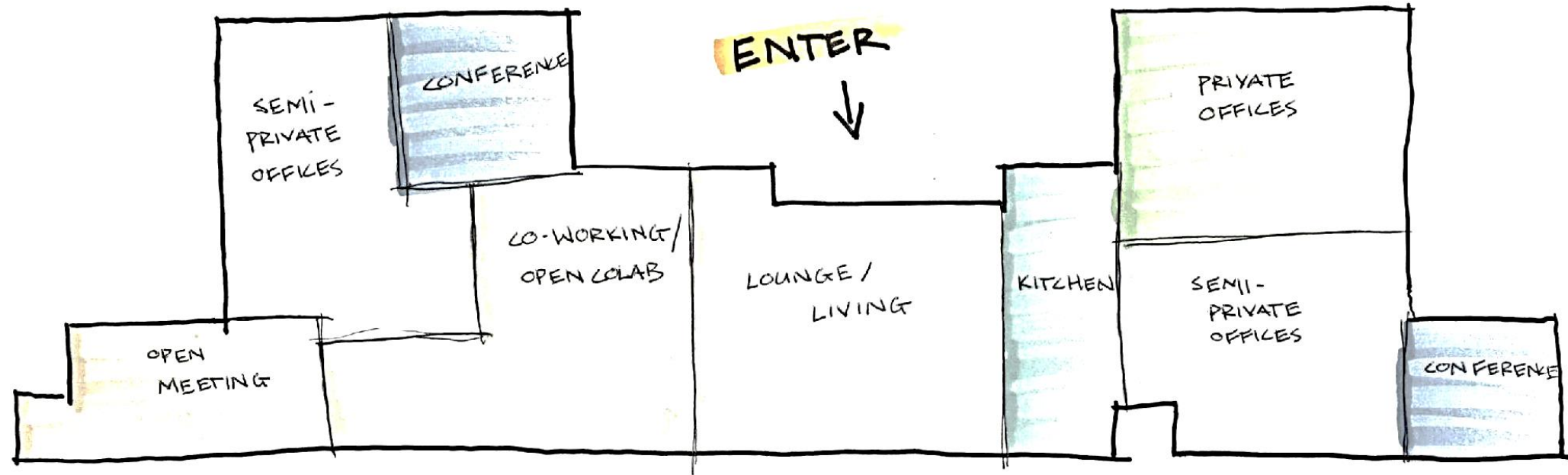




IDSN 3600 PORTFOLIO 2: BUBBLE DIAGRAMS

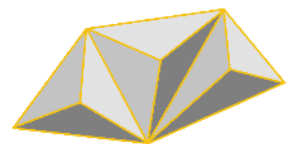
MATTHEW BRACKETT

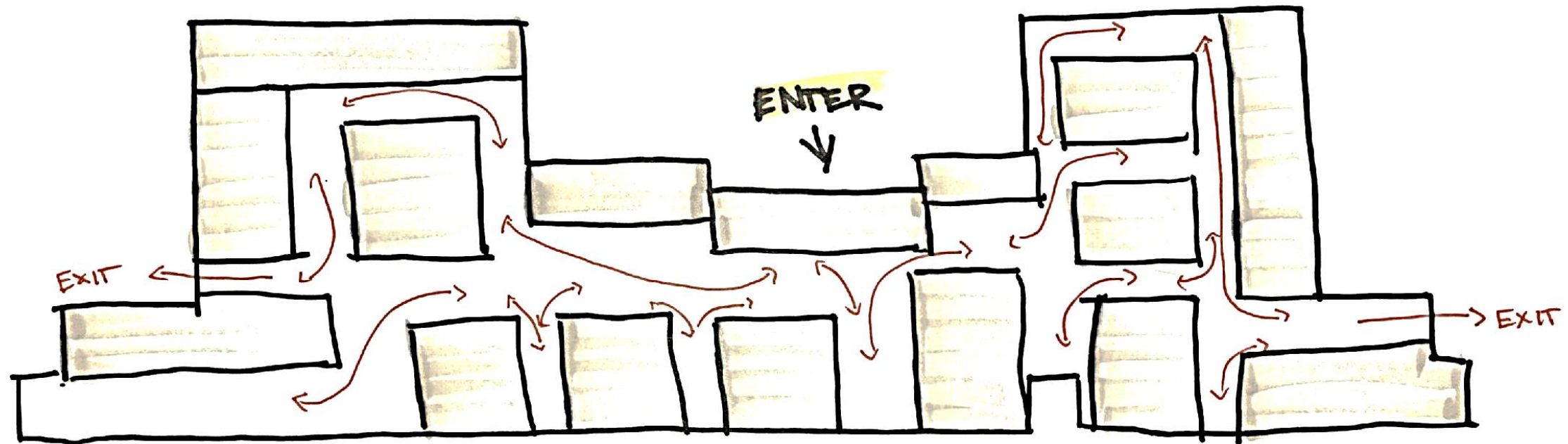
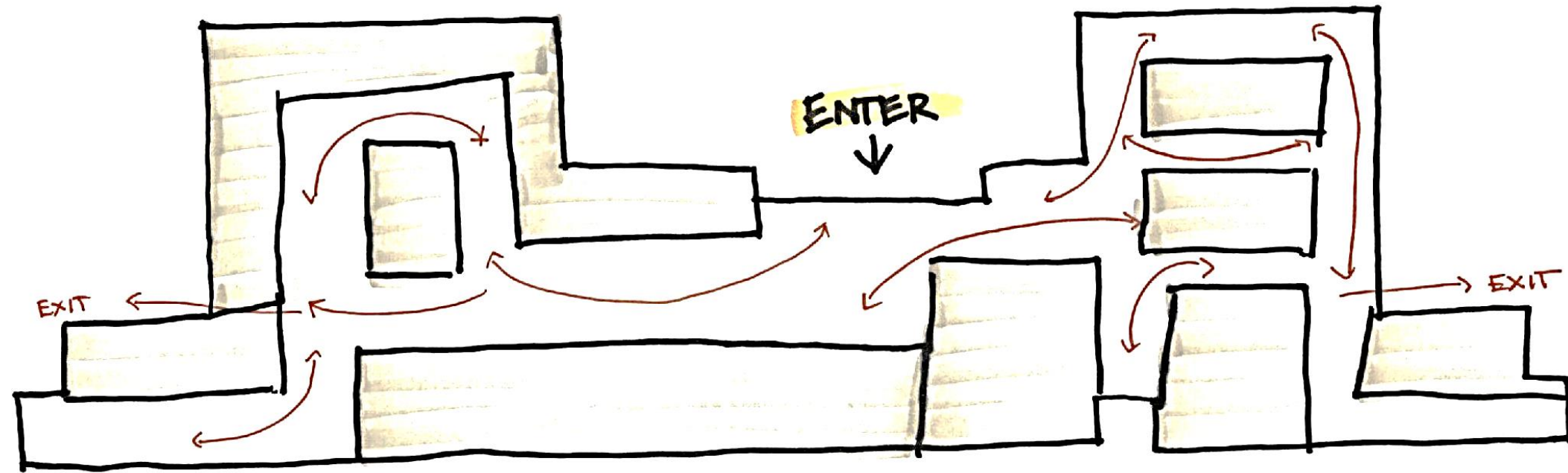




IDSN 3600 PORTFOLIO 2: BLOCKING DIAGRAMS

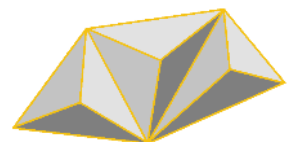
MATTHEW BRACKETT

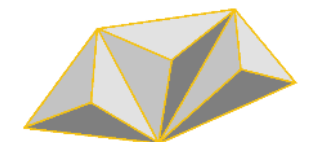
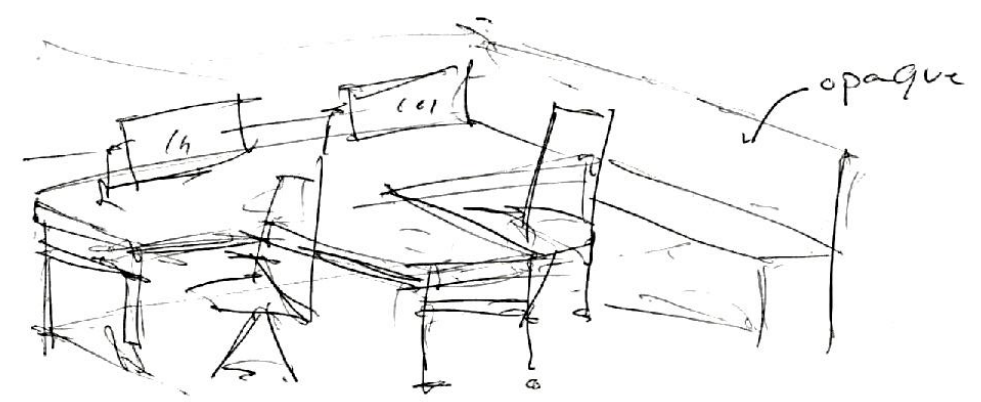
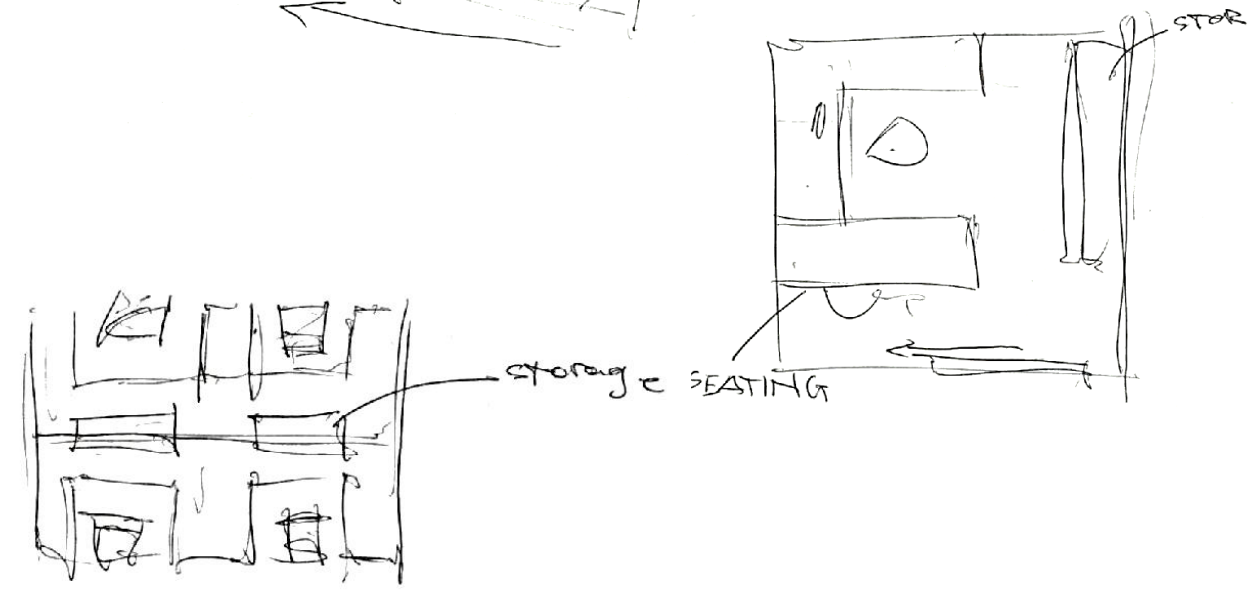
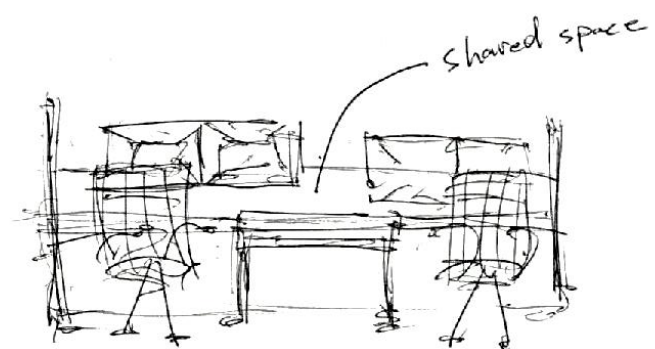
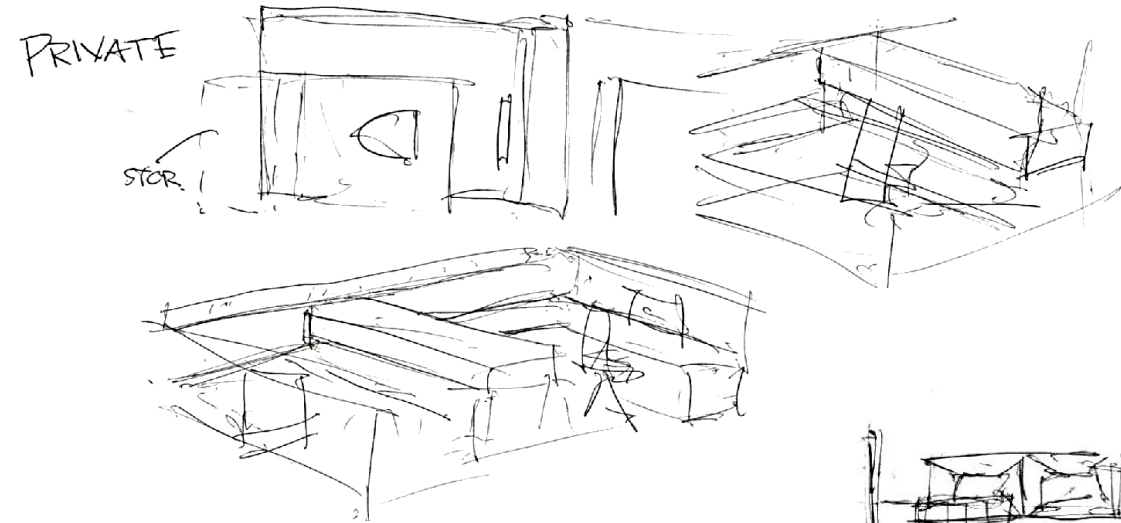
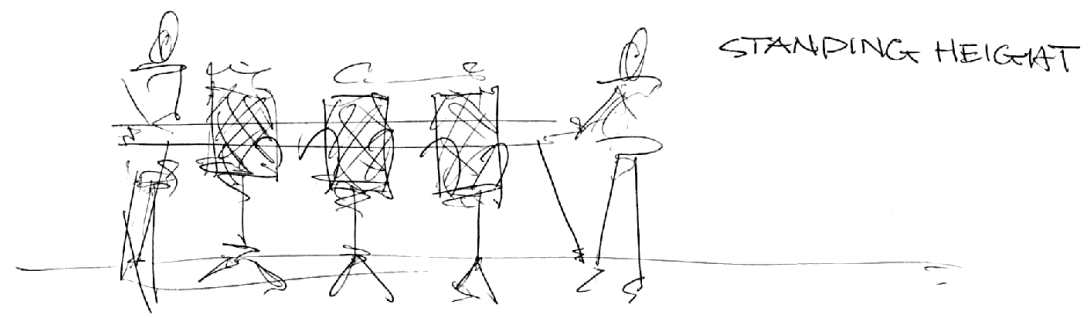




IDSN 3600 PORTFOLIO 2: SPACE STANDARD DRAWINGS

MATTHEW BRACKETT







AFTERNON SUN

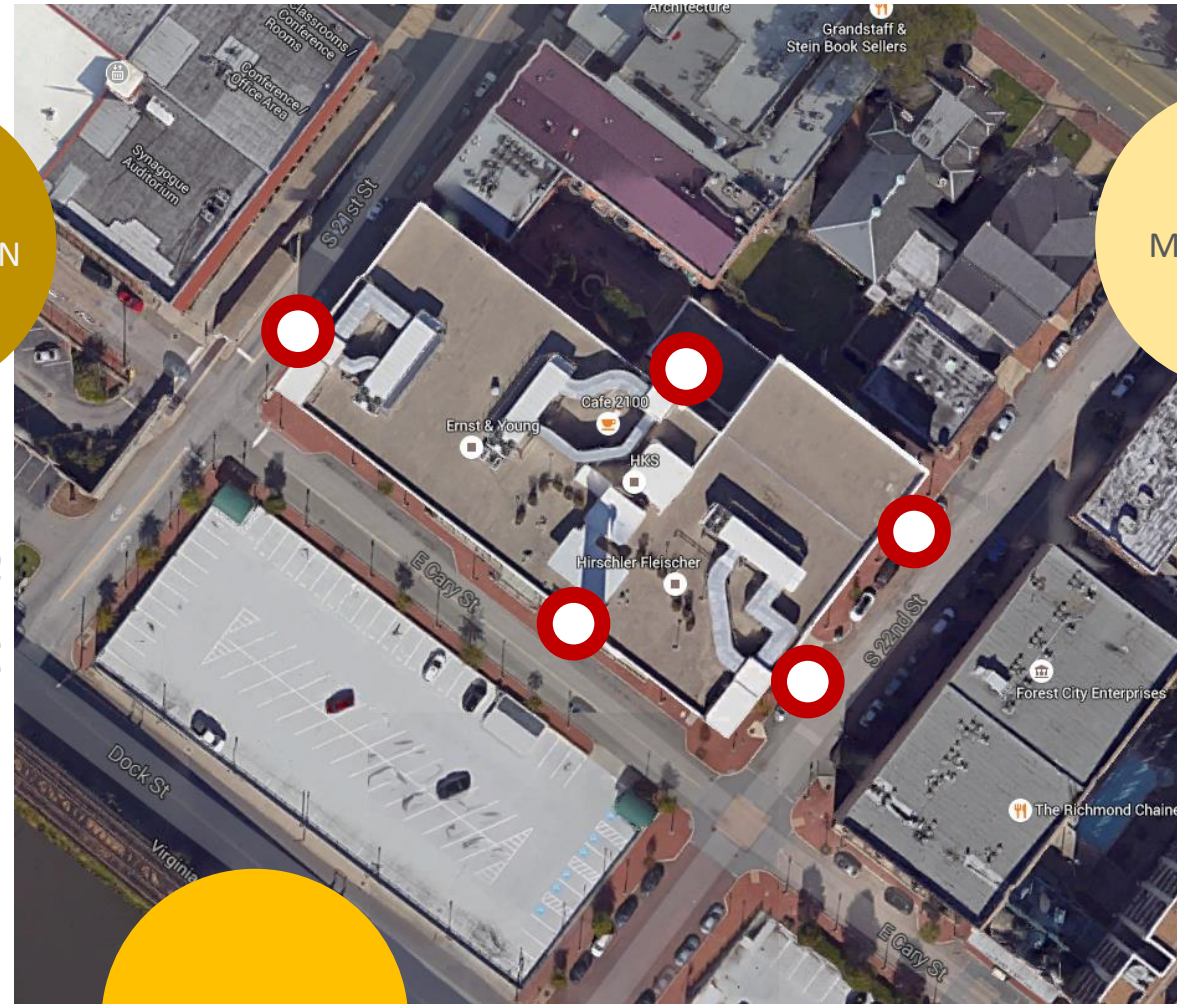
MORNING SUN

WEST

EAST

CONSTANT SUN

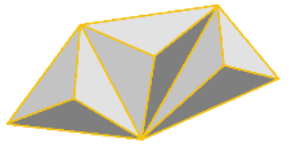
MEANS OF EGRESS

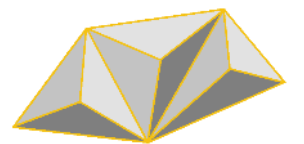
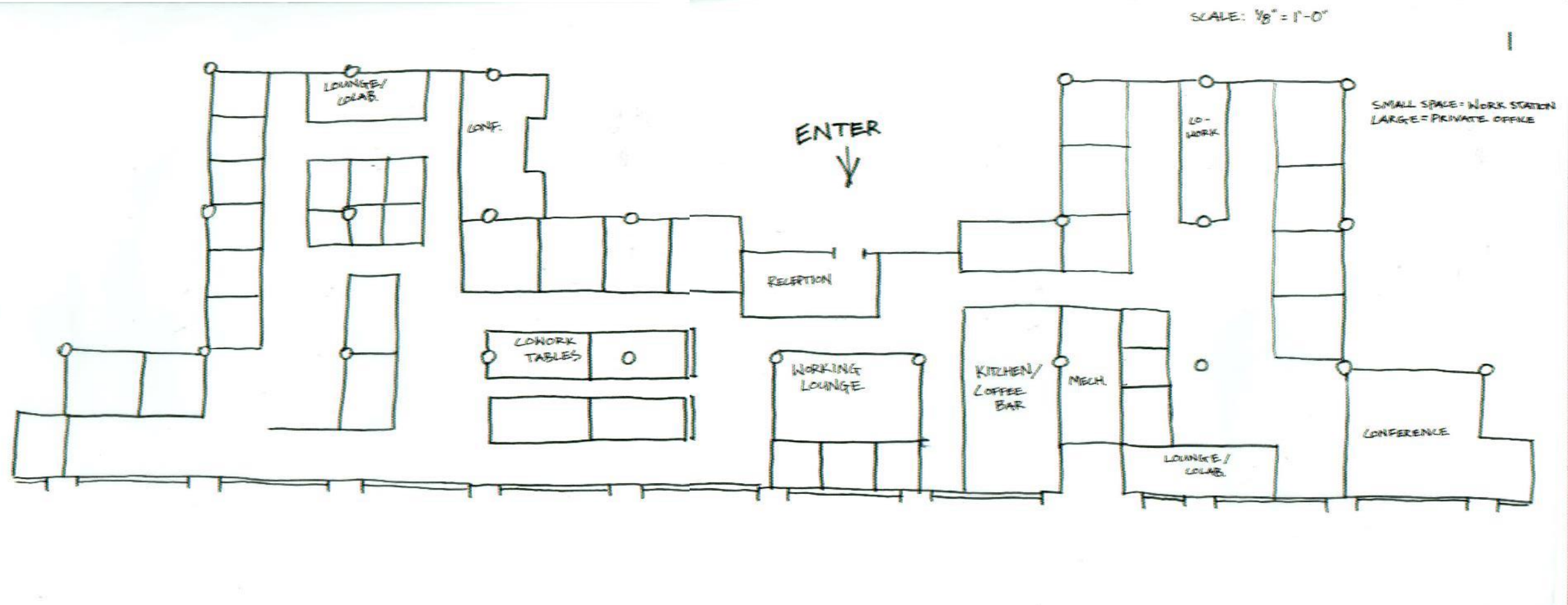


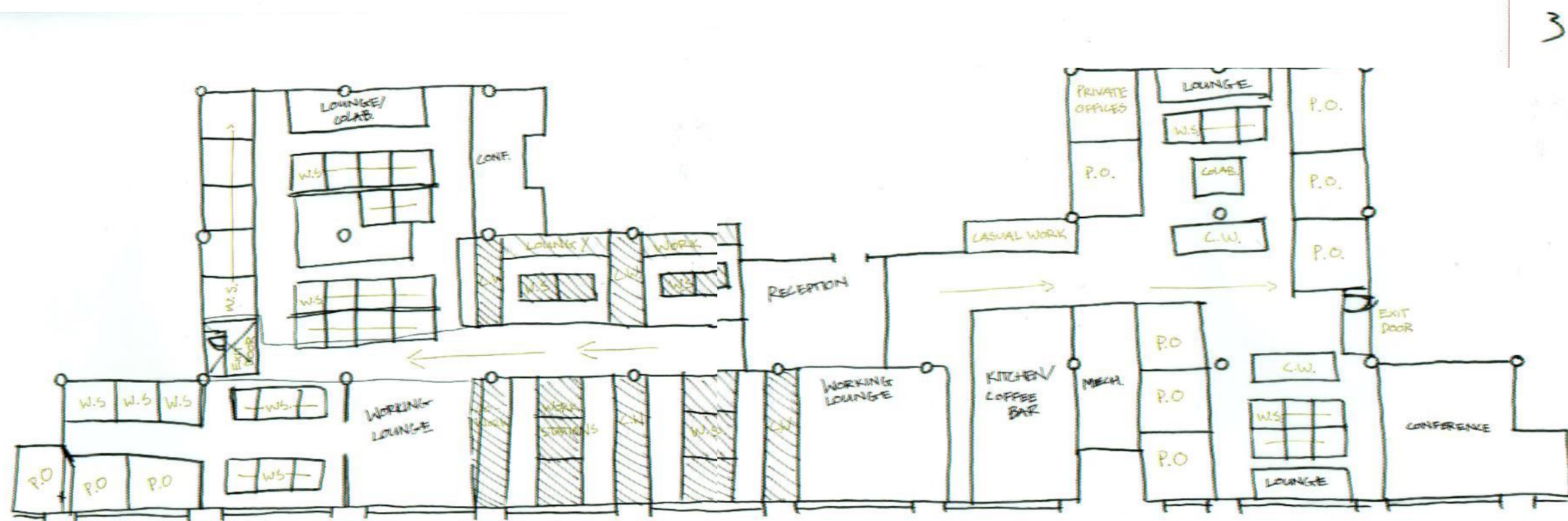
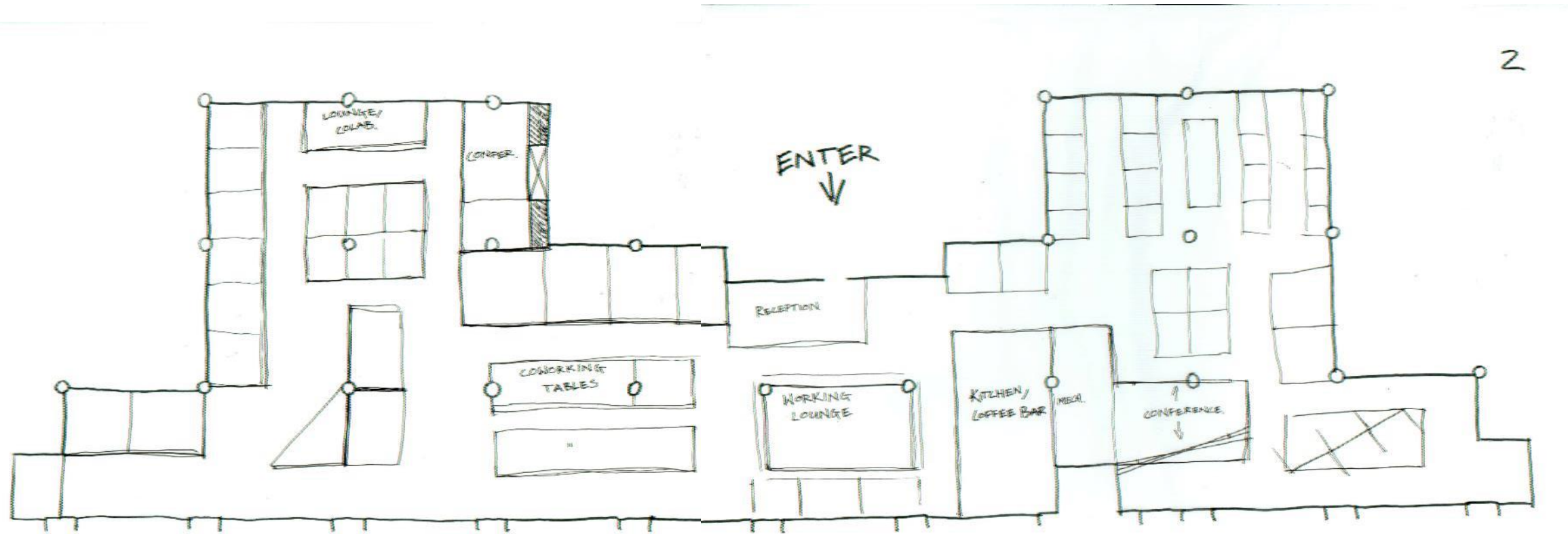
NORTH

SOUTH

IDSN 3600 PORTFOLIO 2: SITE PLAN AND BUILDING ORIENTATION
MATTHEW BRACKETT

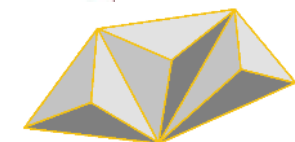


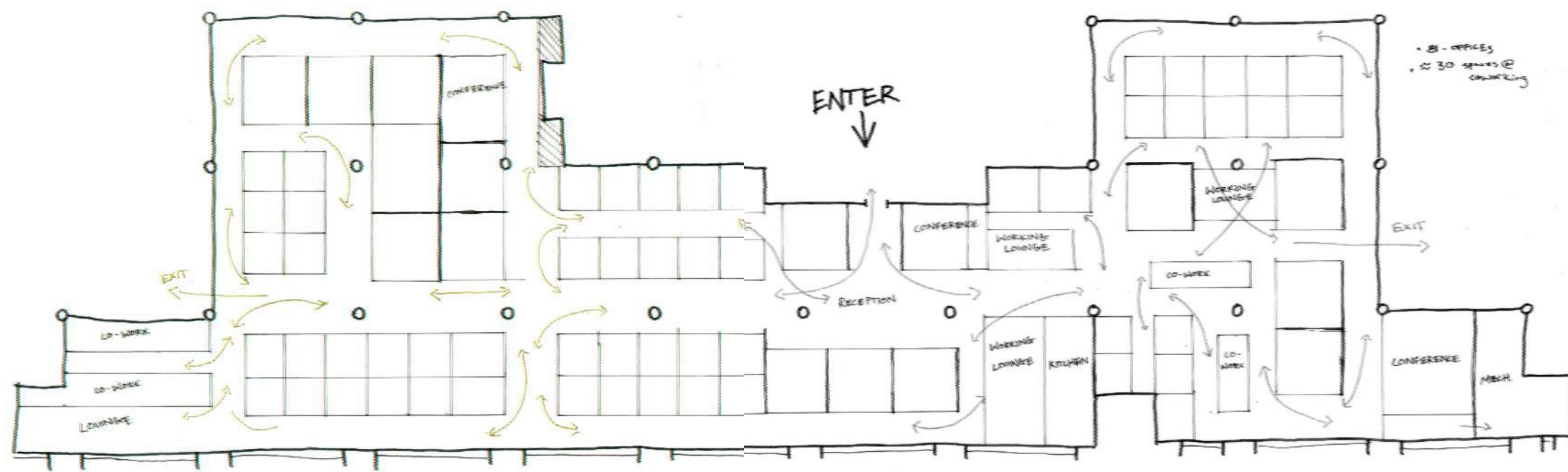
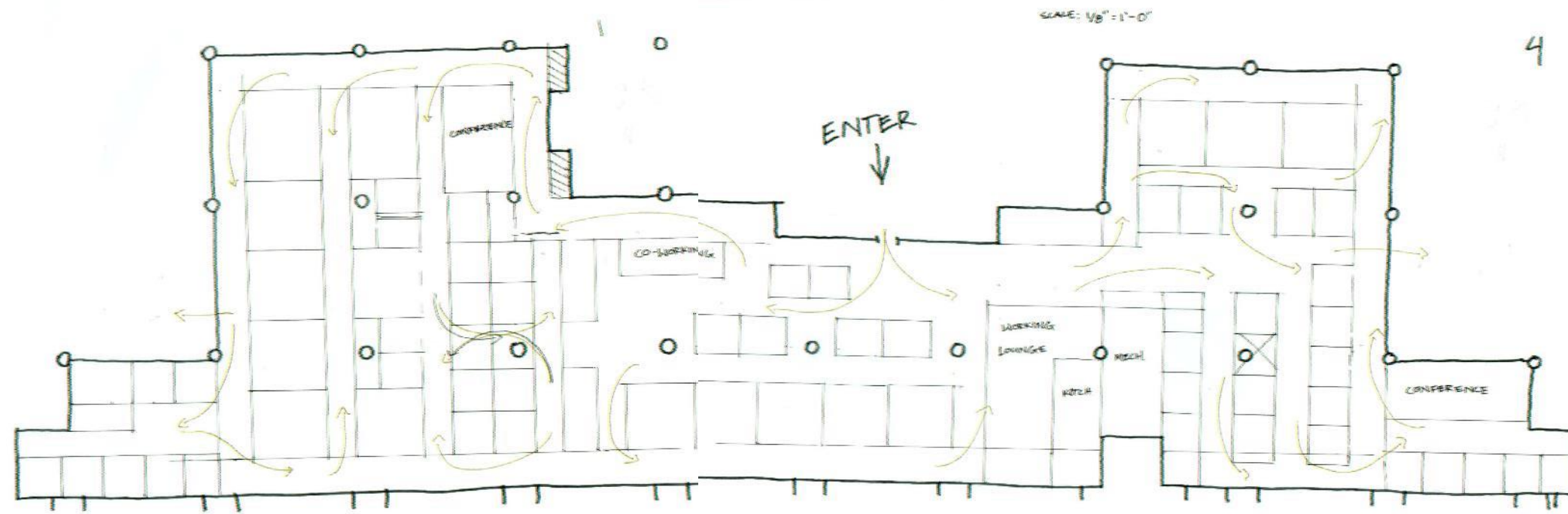




IDSN 3600 PORTFOLIO 2: SPACE PLANNING

MATTHEW BRACKETT

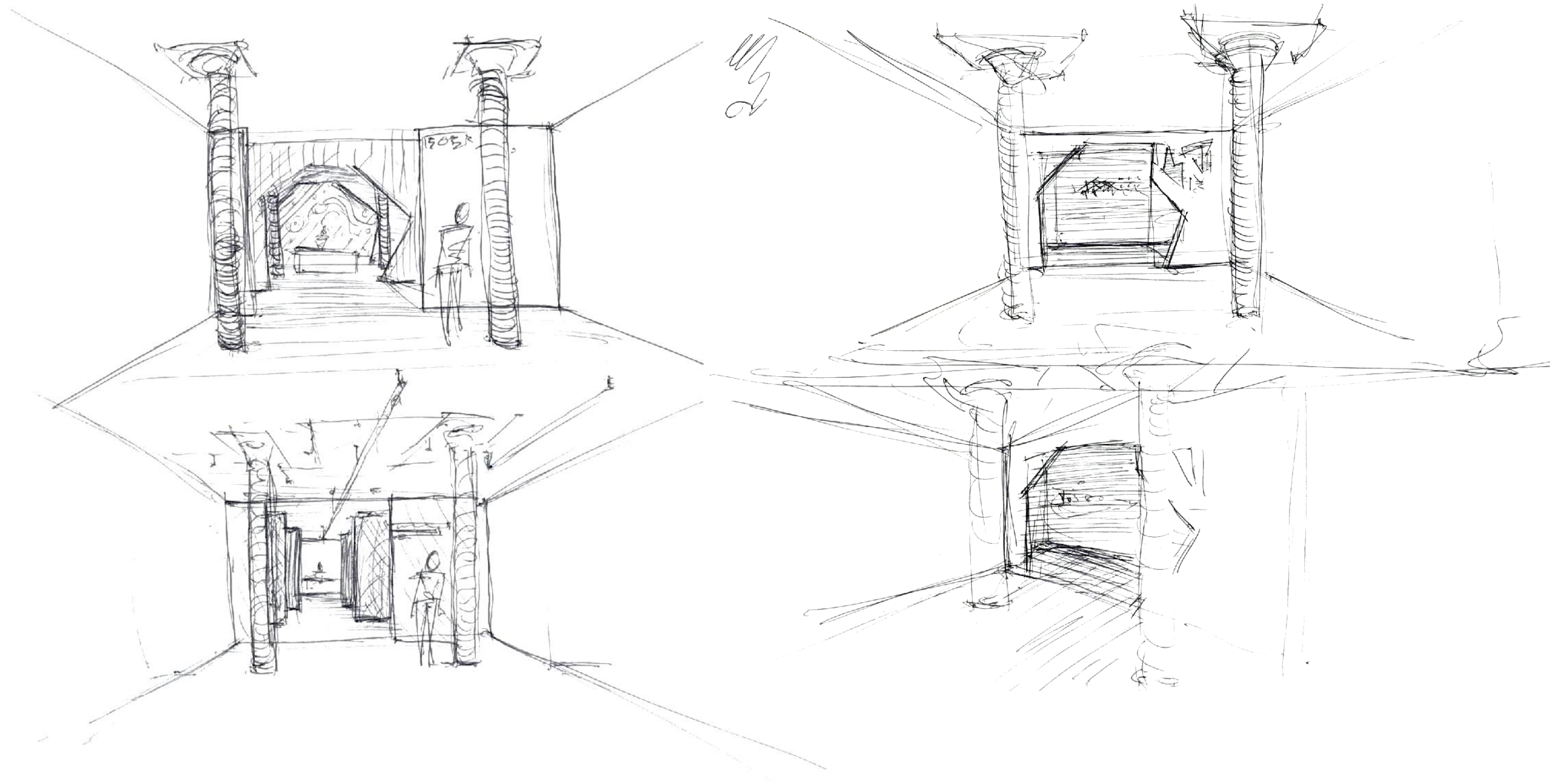




IDSN 3600 PORTFOLIO 2: SPACE PLANNING

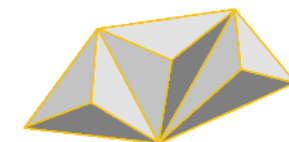
MATTHEW BRACKETT

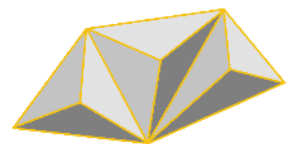
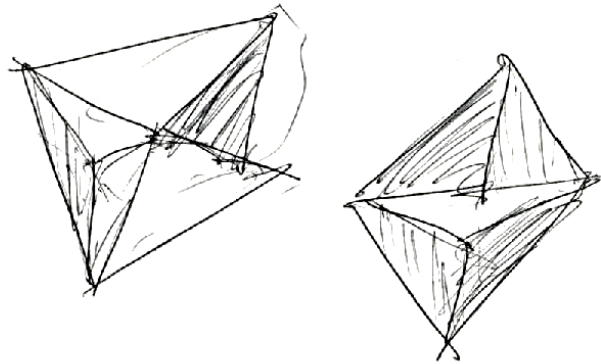
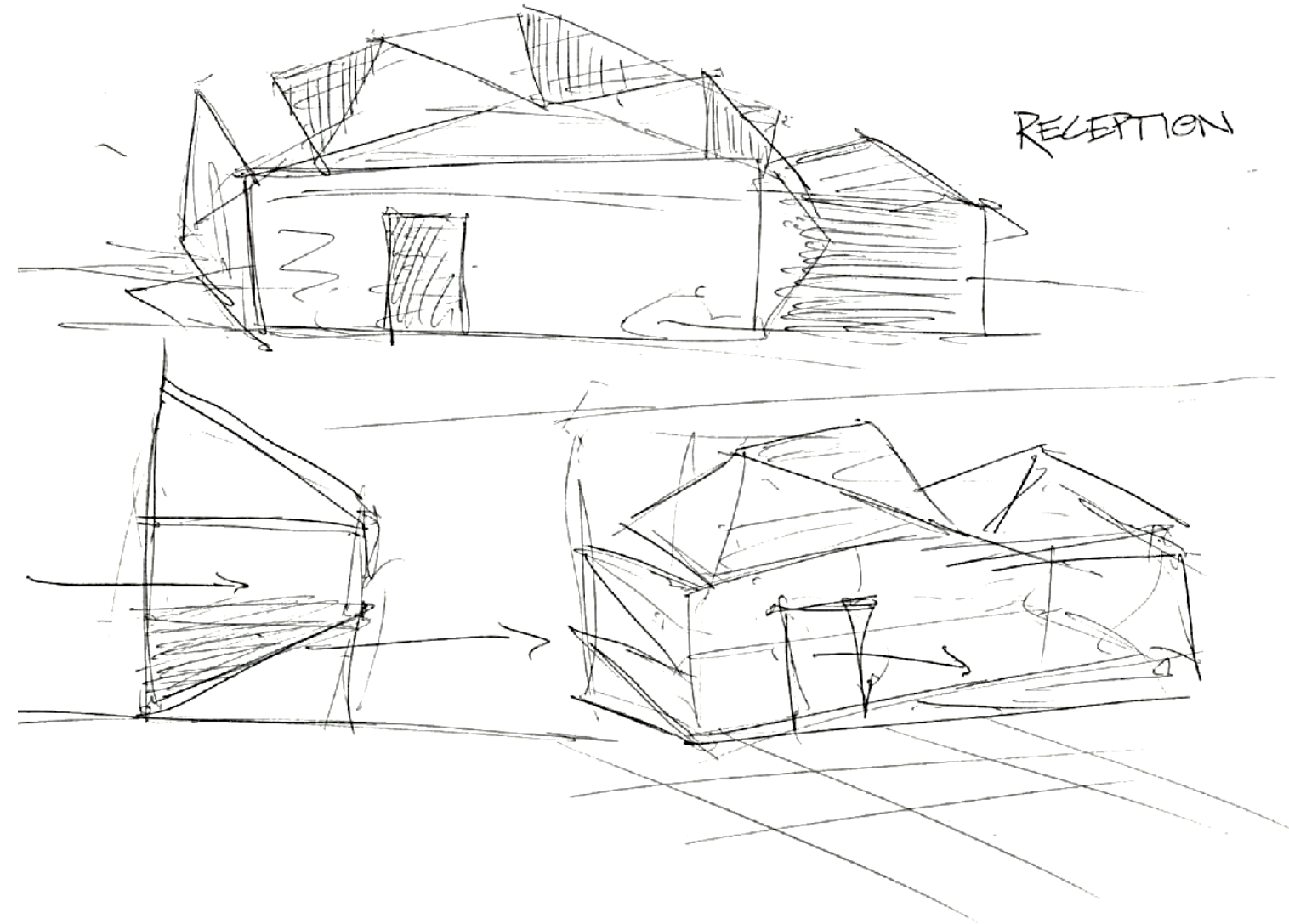
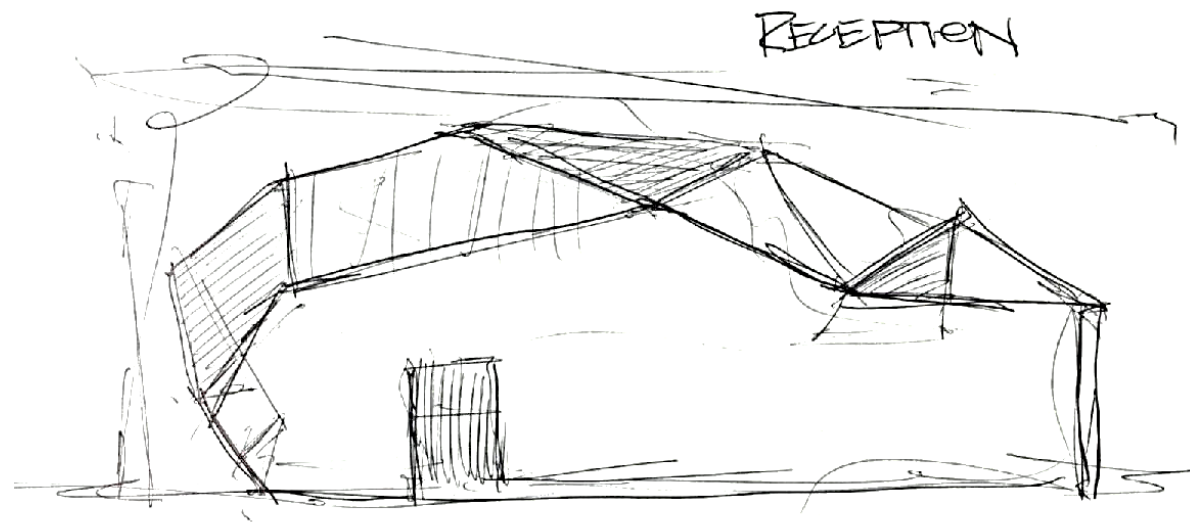


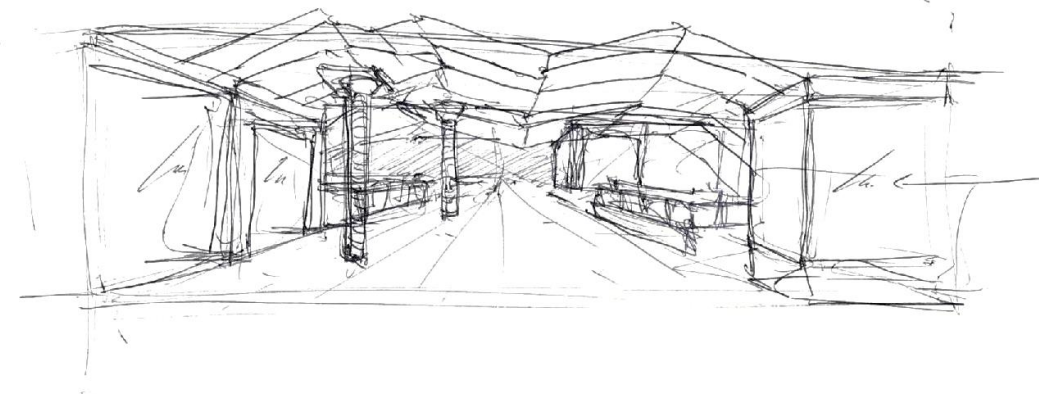
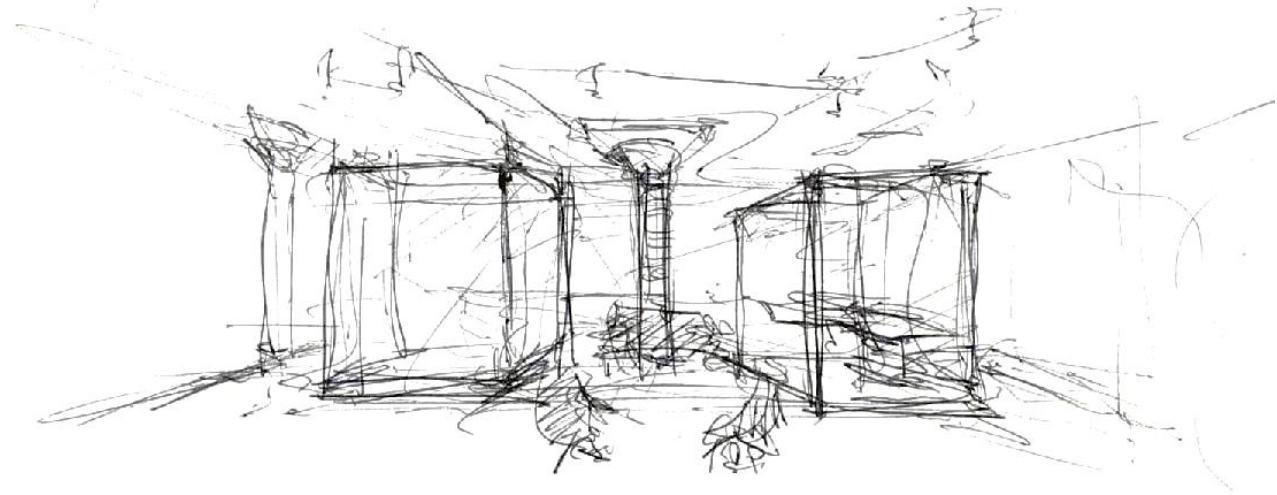
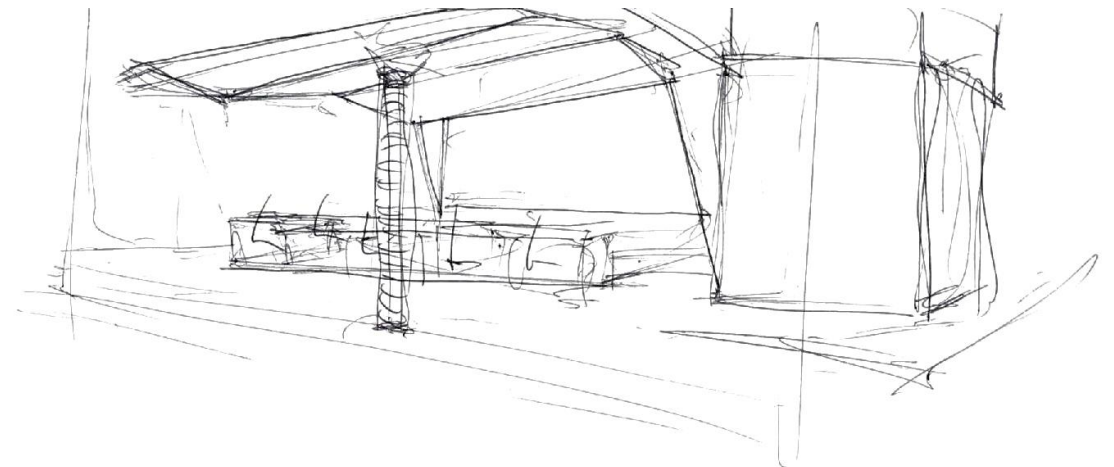
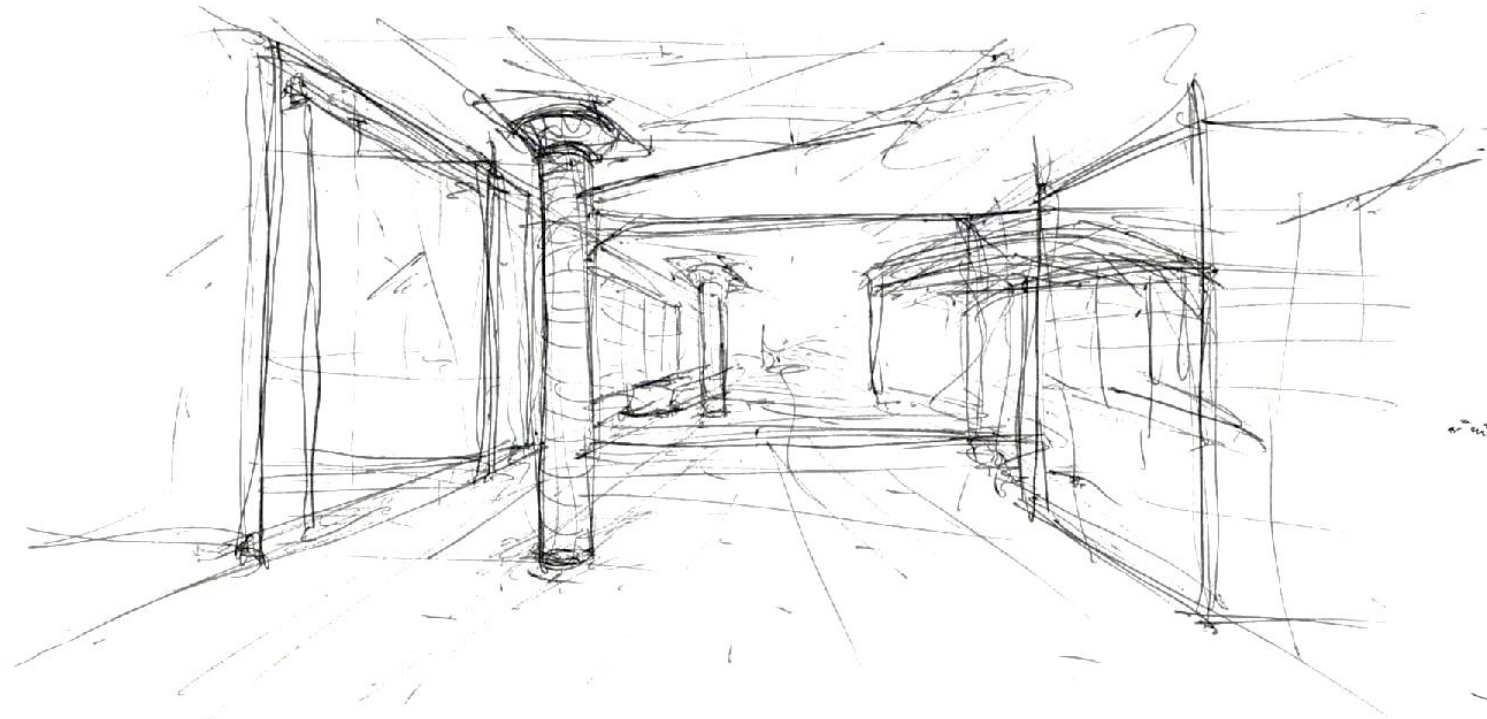


IDSN 3600 PORTFOLIO 2: ENTRY

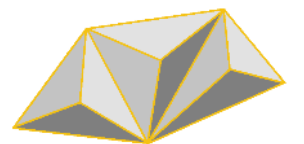
MATTHEW BRACKETT

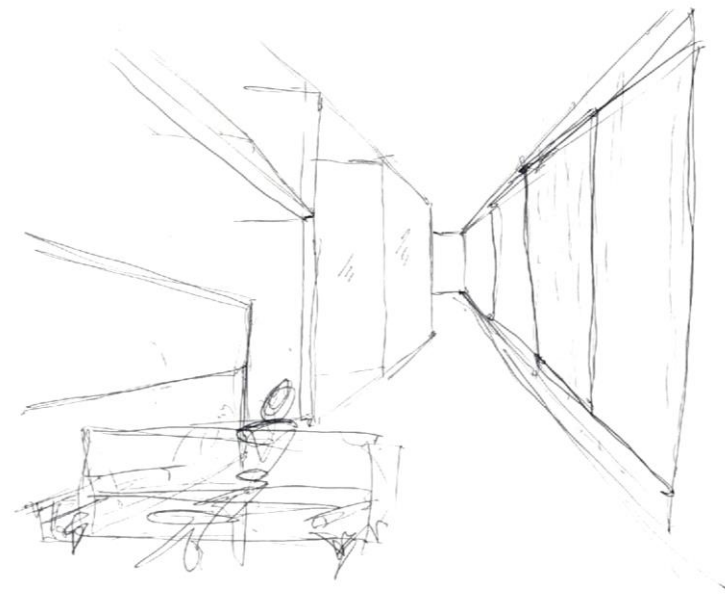
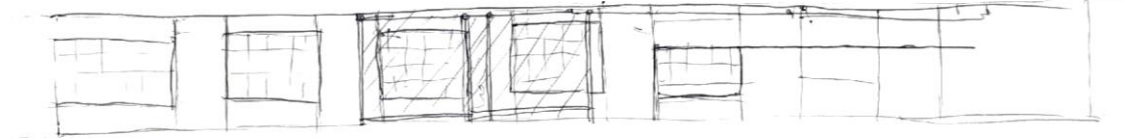
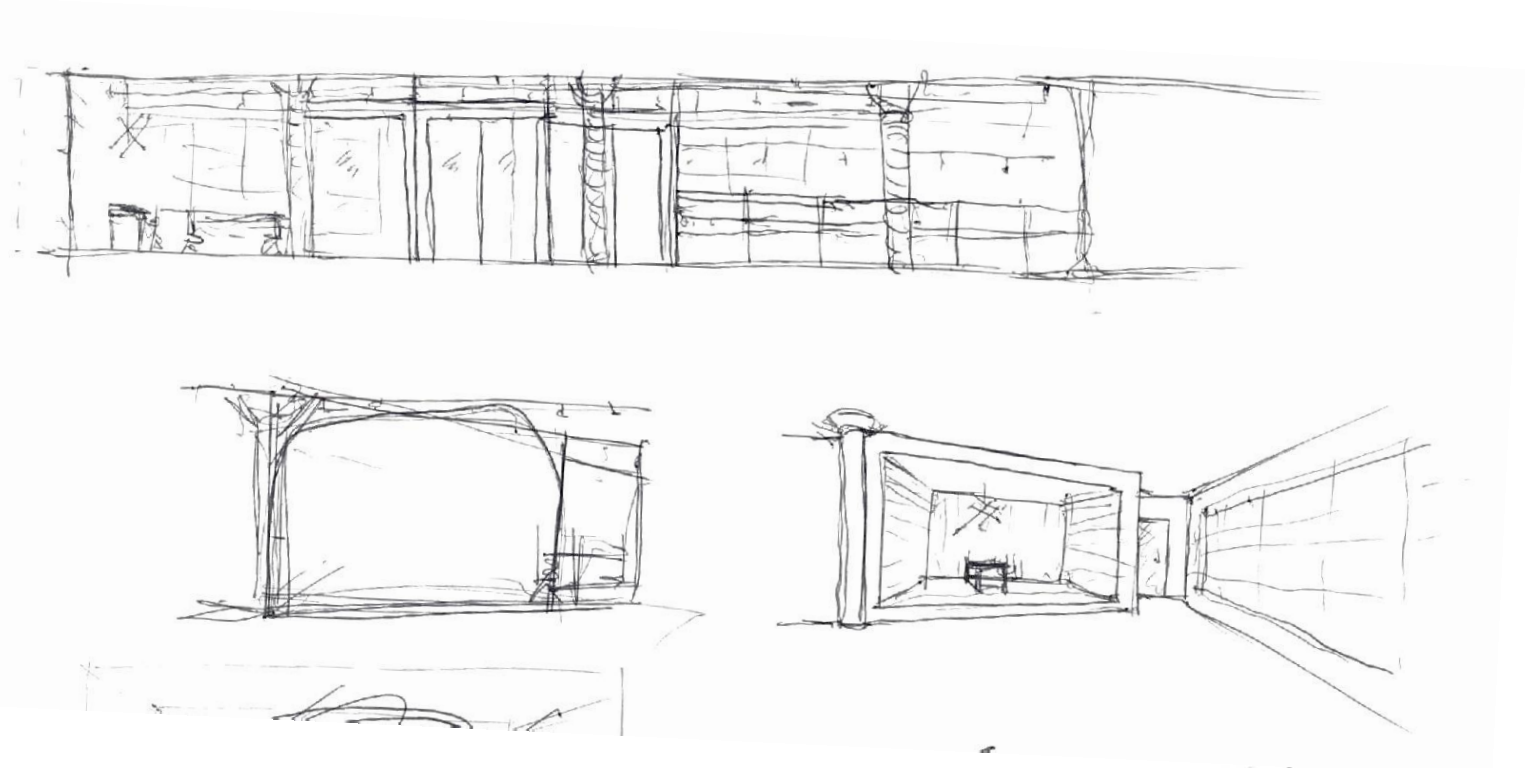




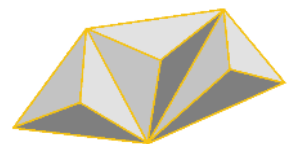


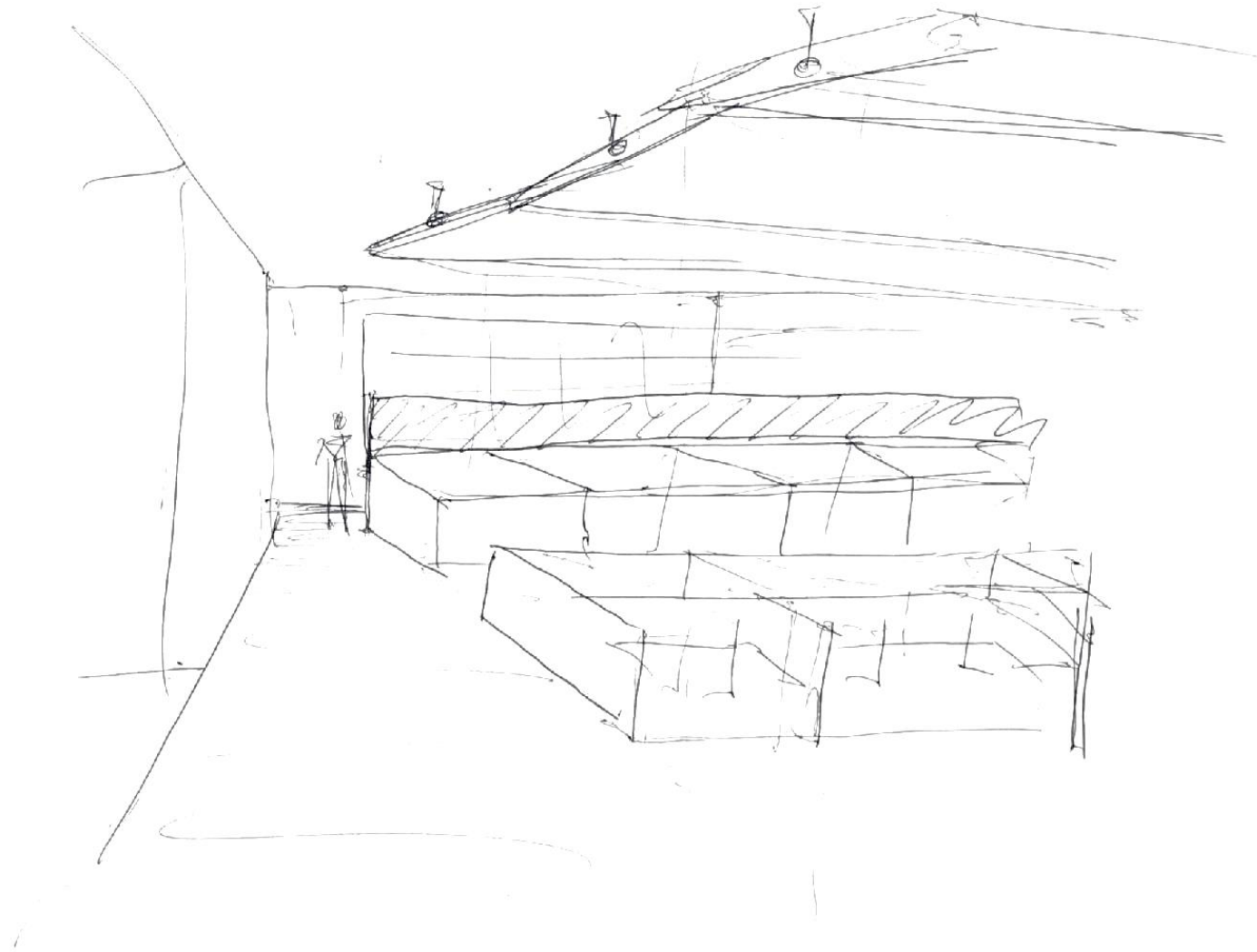
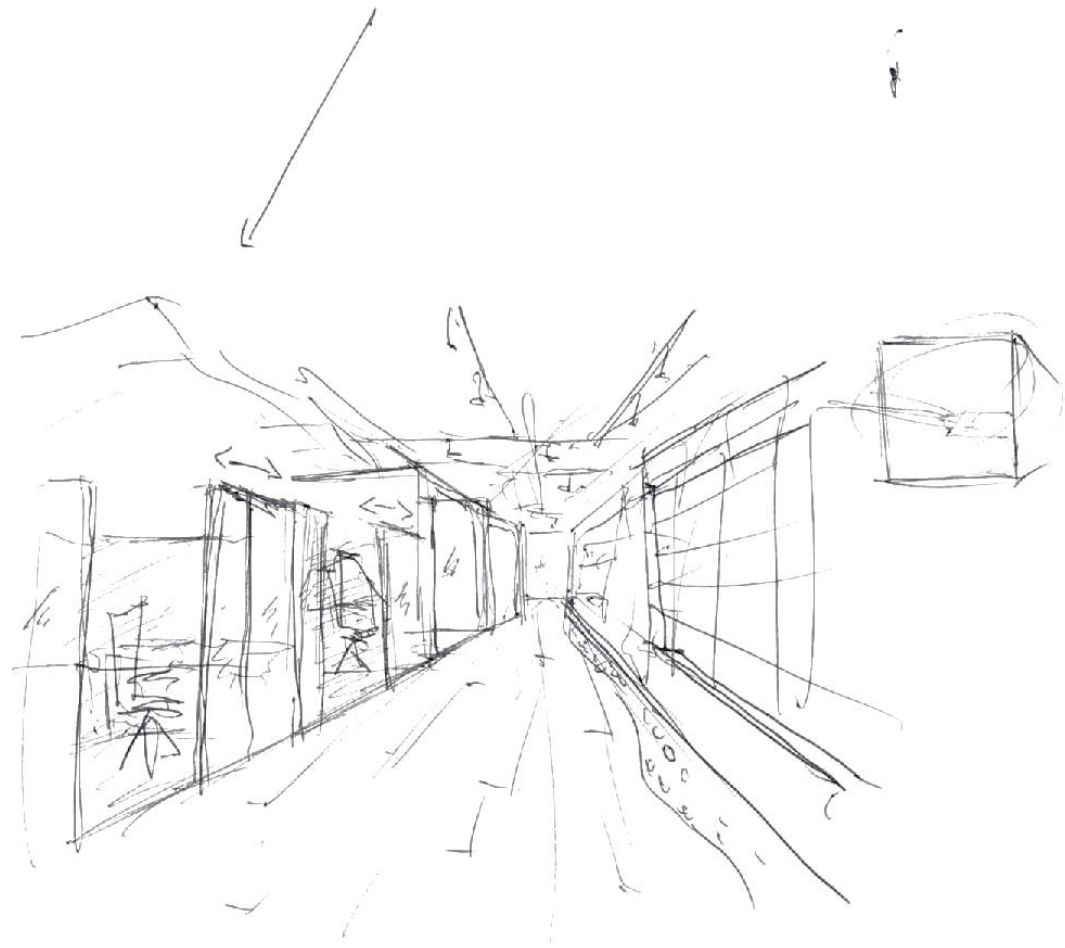
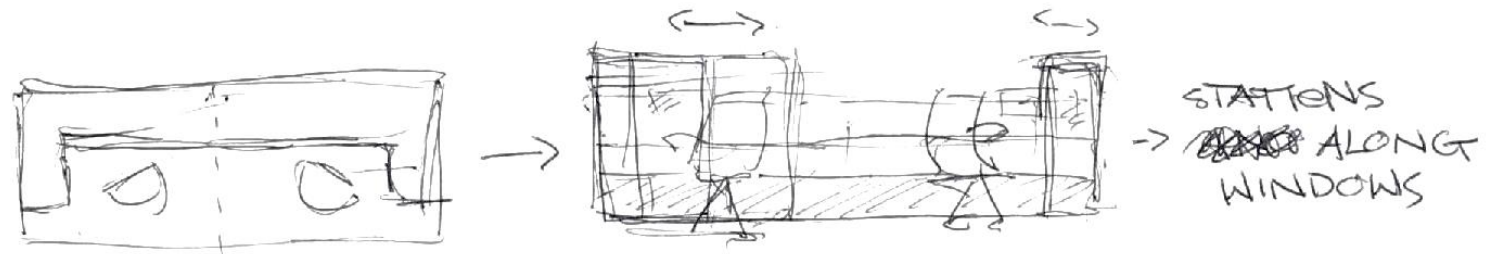
IDSN 3600 PORTFOLIO 2: CORRIDORS
MATTHEW BRACKETT





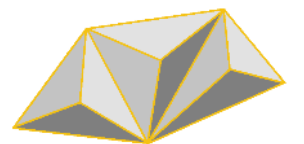
IDSN 3600 PORTFOLIO 2: CORRIDORS
MATTHEW BRACKETT

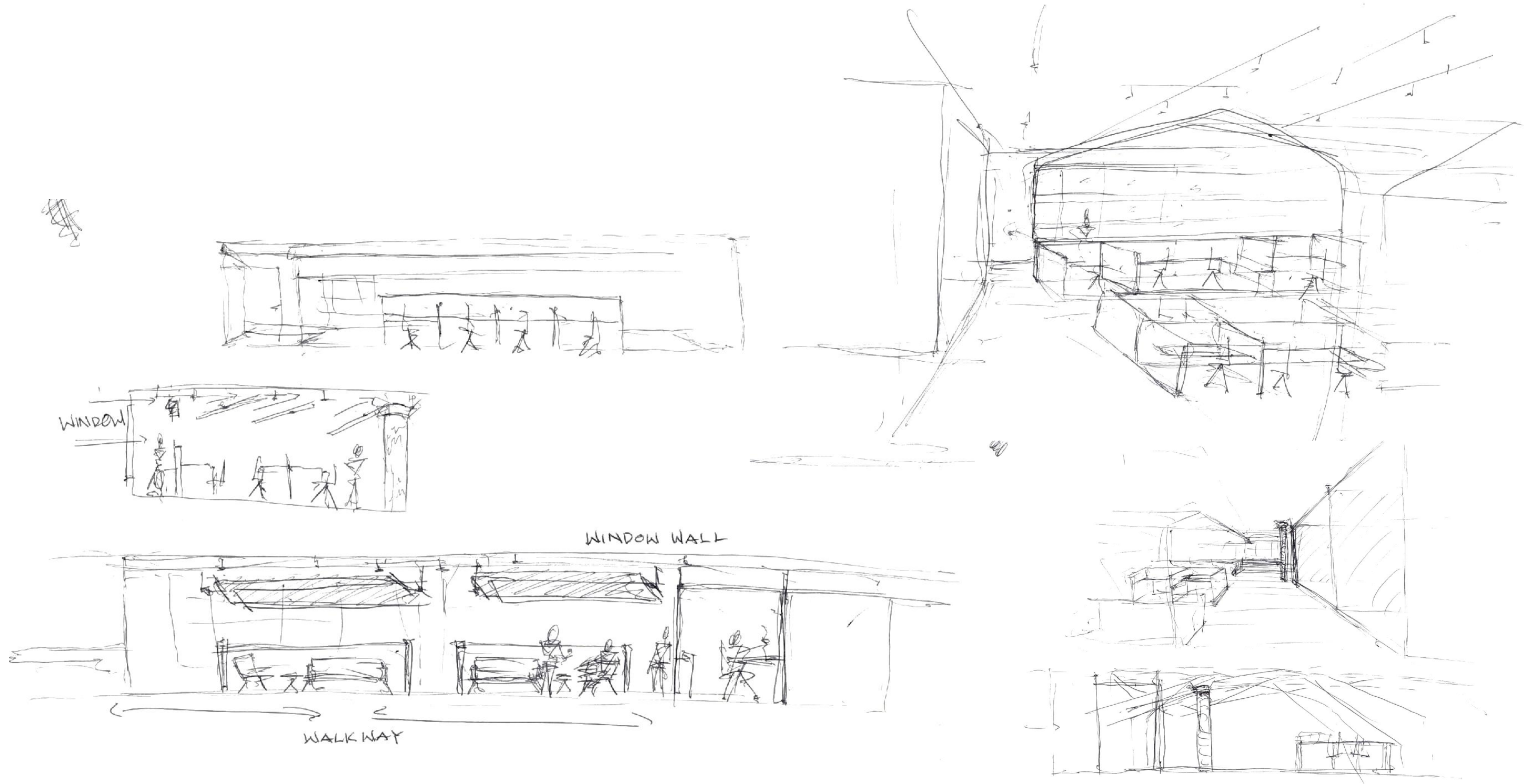




IDSN 3600 PORTFOLIO 2: OPEN OFFICE

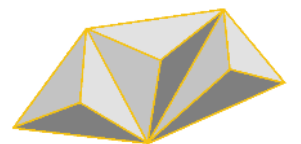
MATTHEW BRACKETT

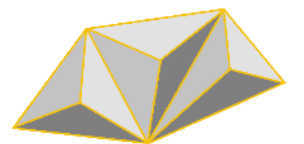
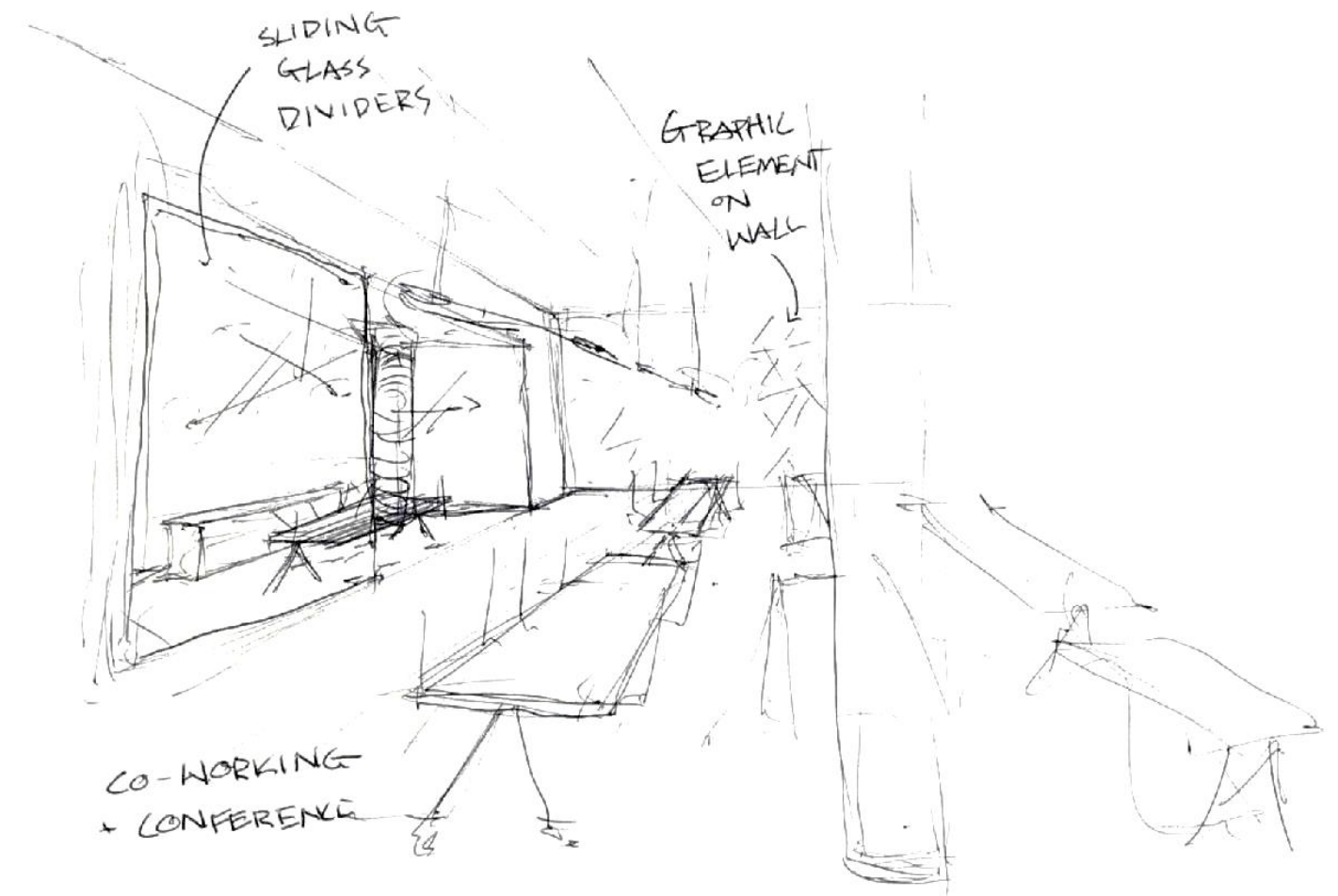
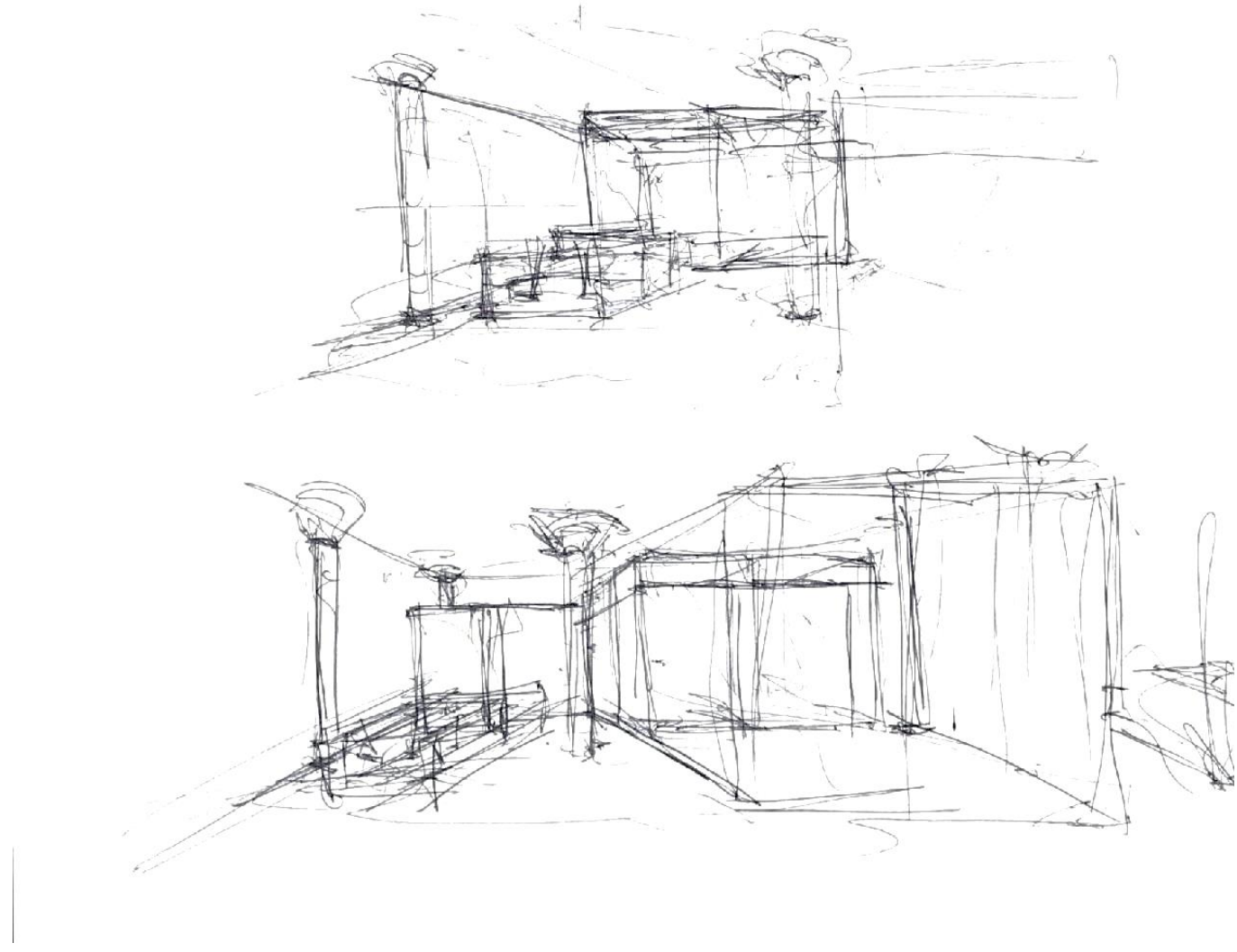


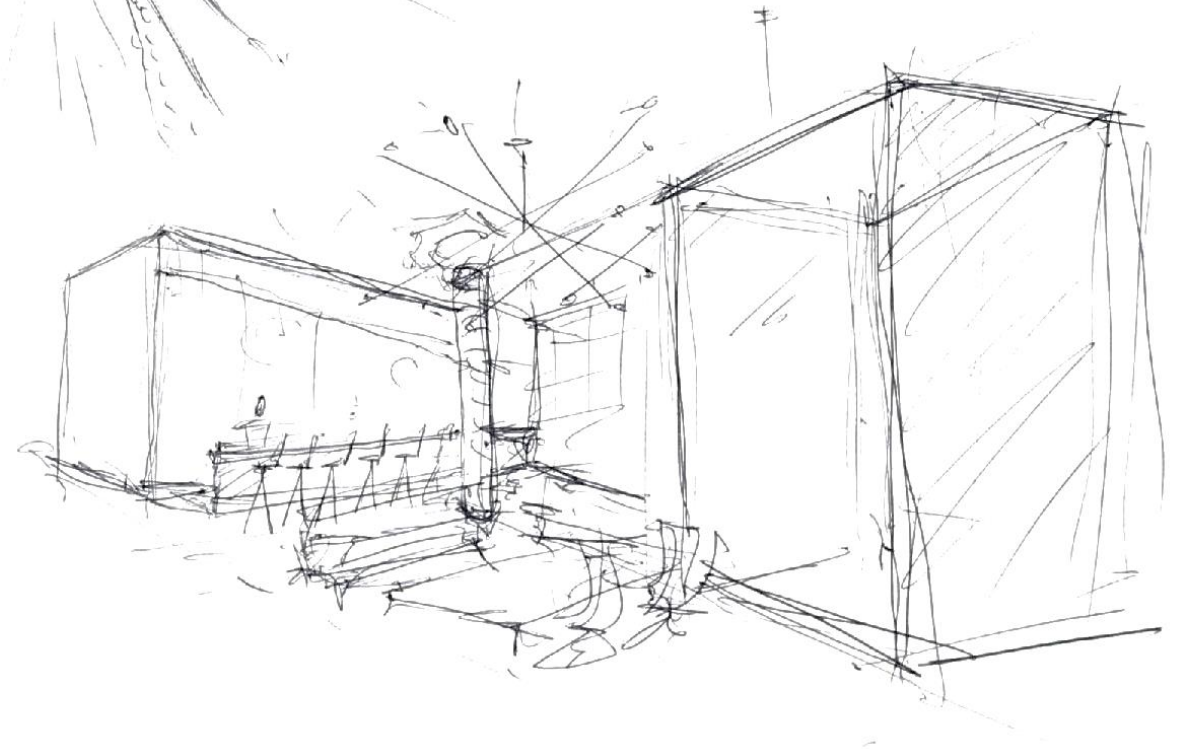
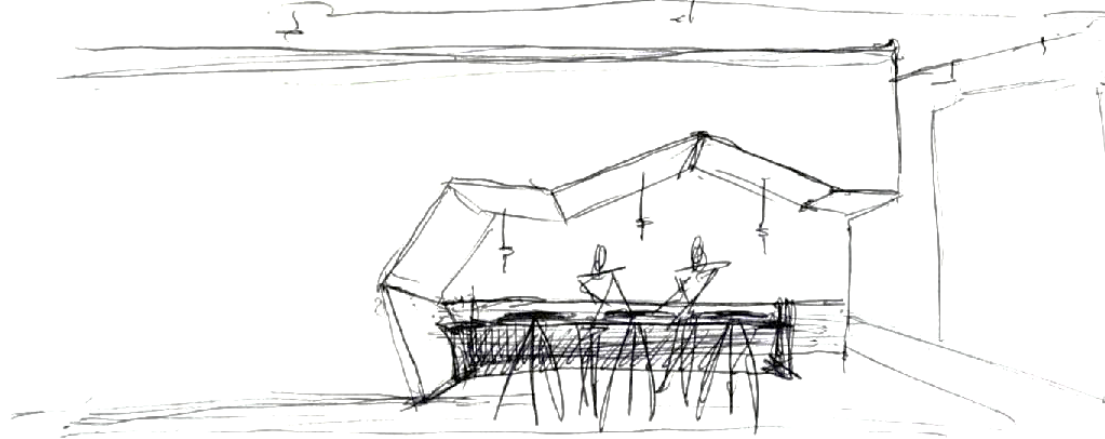
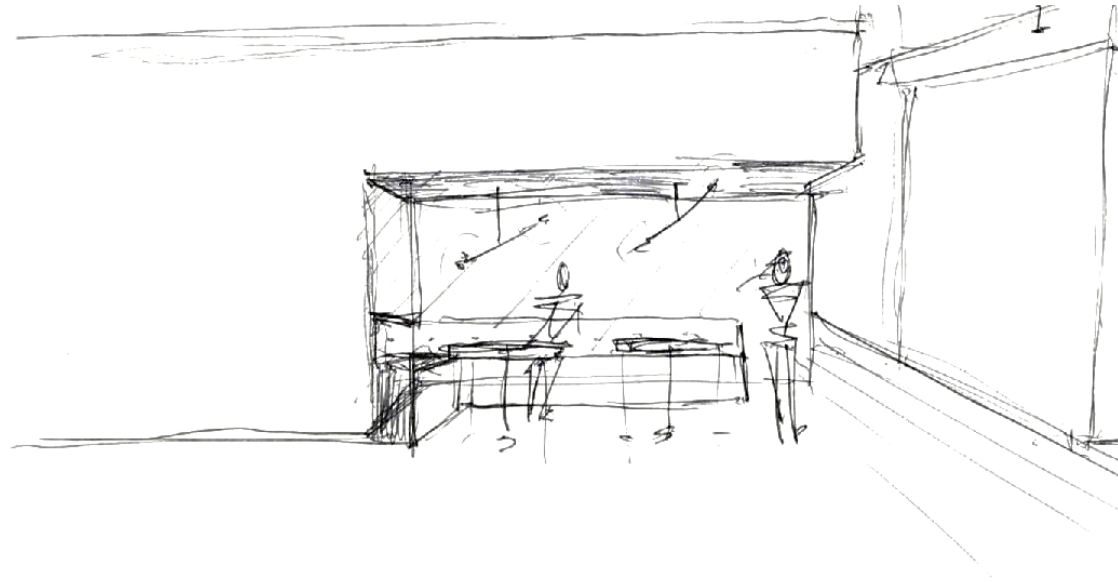


IDSN 3600 PORTFOLIO 2: OPEN OFFICE

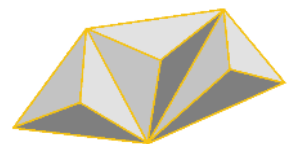
MATTHEW BRACKETT

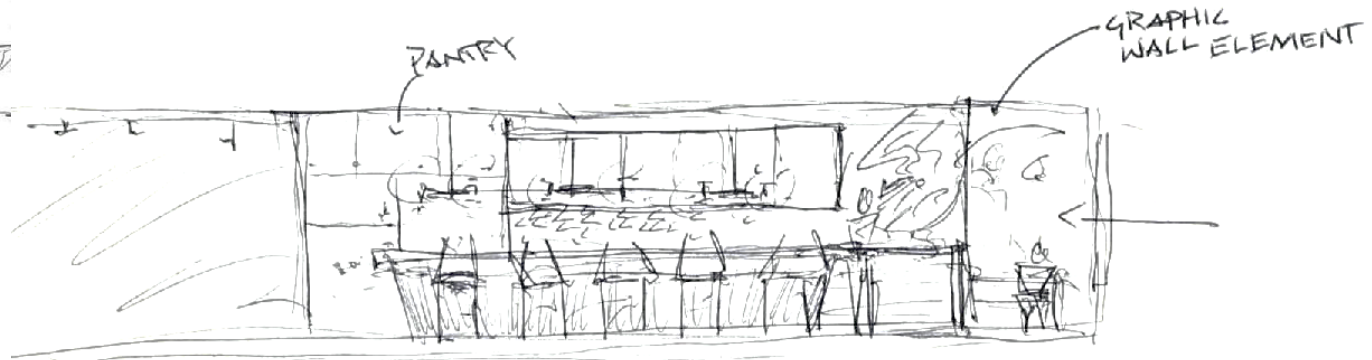






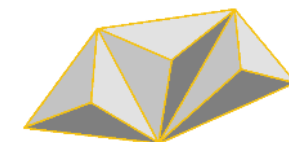
IDSN 3600 PORTFOLIO 2: LOUNGE
MATTHEW BRACKETT

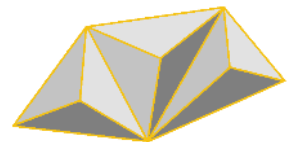
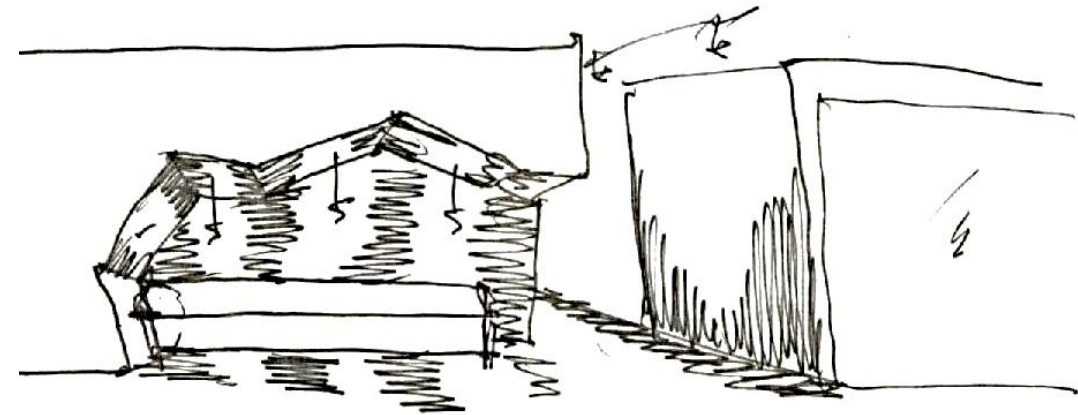
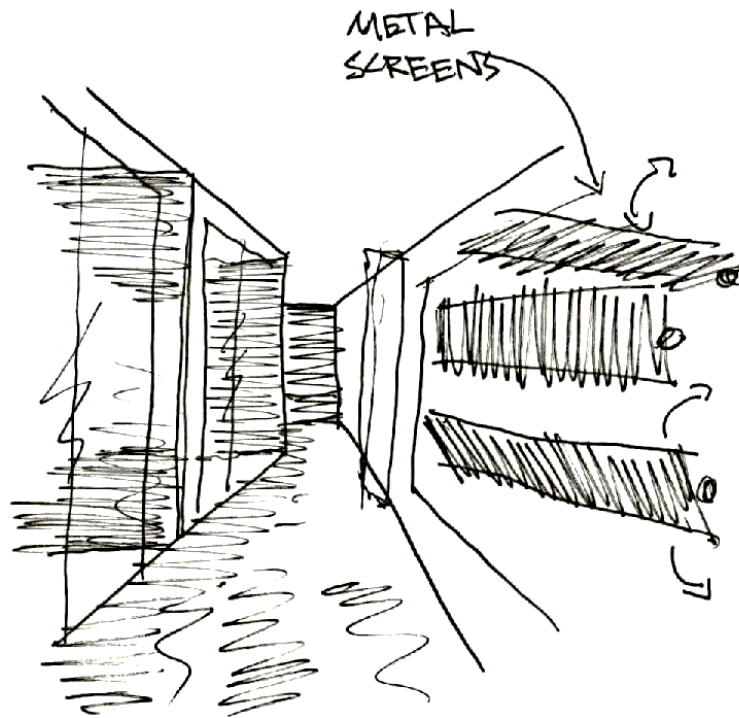
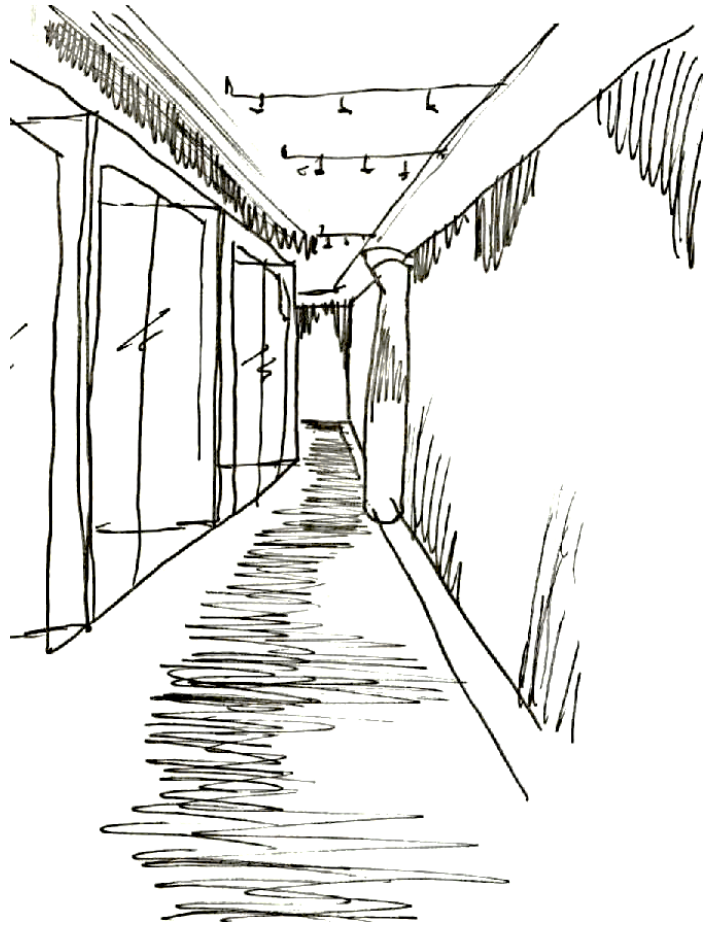
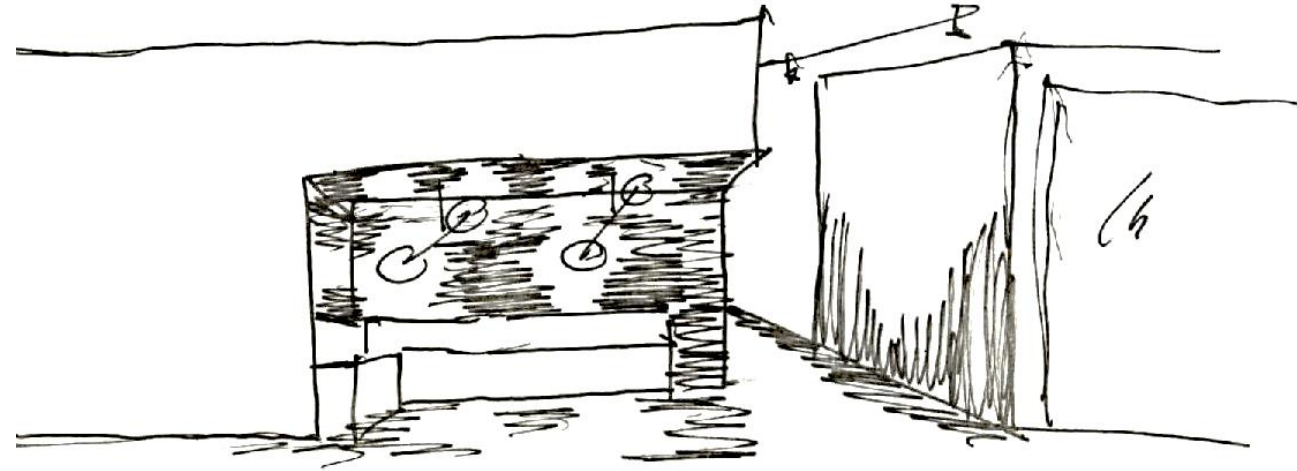
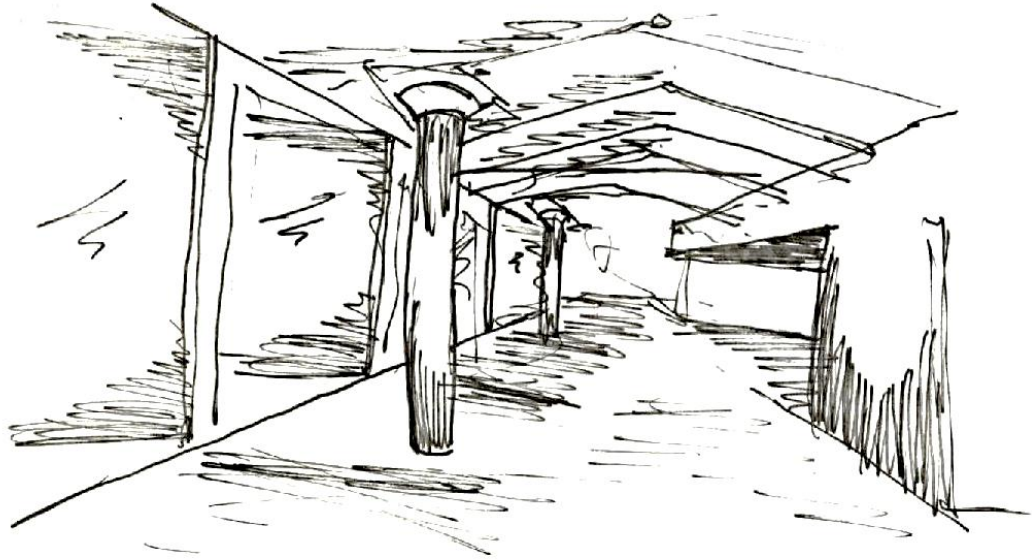


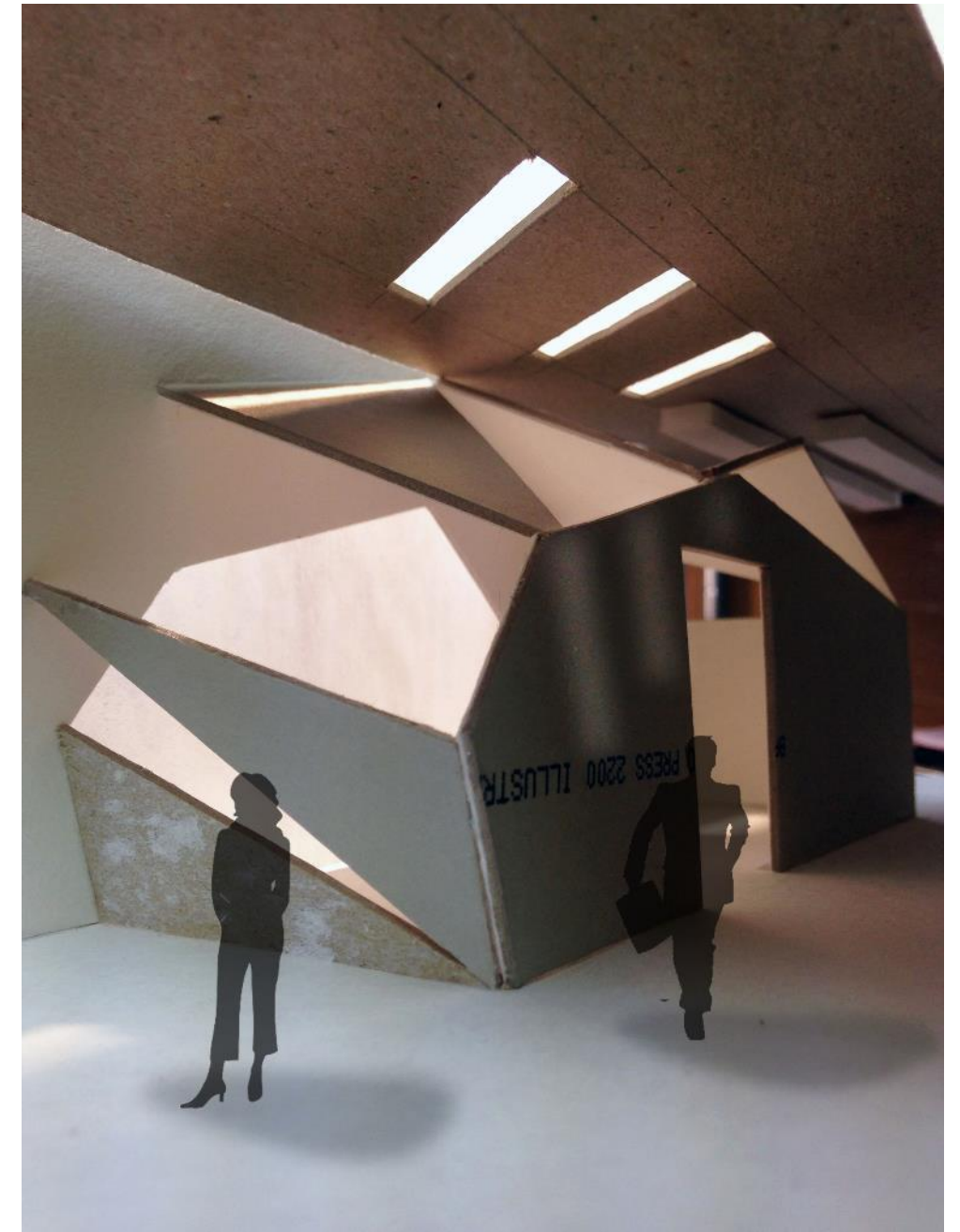


IDSN 3600 PORTFOLIO 2: LOUNGE

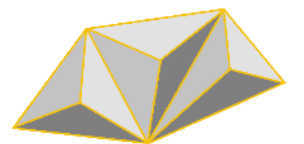
MATTHEW BRACKETT





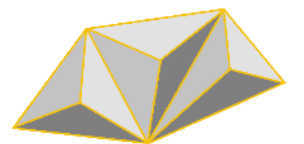


IDSN 3600 PORTFOLIO 2: LIGHTING MODEL
MATTHEW BRACKETT





IDSN 3600 PORTFOLIO 2: LIGHTING MODEL
MATTHEW BRACKETT



Lumen (or Zonal Cavity) Method of Calculation:

Maintained fc=

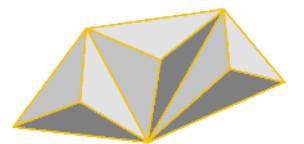
$$\frac{(\text{Number of lamps}) \times (\text{Initial lamp lumens}) \times \text{LLF} \times \text{CU}}{\text{Area}}$$

MAINTAINED FC=

LLF: 8.5X20

$$\frac{(64) \times (1750) \times (17.85) \times 30}{100 \text{ SQ FT}}$$

$$\begin{aligned} \text{RCR} &= \frac{5(10)(20)}{100} \\ &= 10 \end{aligned}$$



MIREL LED



3000K, 3500K or 4000K

Applications: MIREL LED creates perfect lighting conditions for the most varied visual tasks in offices, classrooms and general use areas. Light guided via quadrification lens optic (QLO) for maximum luminaire efficiency, perfect glare reduction and bathing light distribution.

Surface Mounted

2' x 2'

online Find it Fast 1155

Type: _____ Quantity: _____ Project: _____

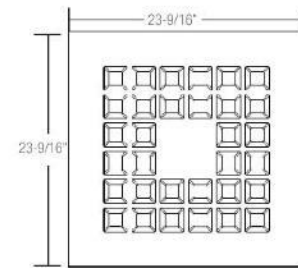
LED

MIREL LED	22	SM	WATTAGE		CCT (K)		LENS	DRIVER	OPTIONS
MIREL LED	22	SM	33W	33W	K30	3000K	L Quadrification Lens Optic (QLO)	DU Standard 0-10V Universal Dimming Driver 120/277V	EM Standby Battery Pack, 5W, 700 Im
		Surface Mounted	22W	22W	K35	3500K		DD DALI Dimming	
		CRI = 85 typical			K40	4000K		DH Lutron A-Series Dimming	
						3-step MacAdam			

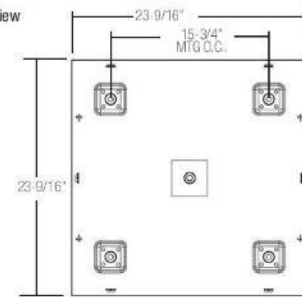
MIREL LED CVR ACCESS PLT Order one cover/access plate assembly per luminaire.

OVERALL DIMENSIONS

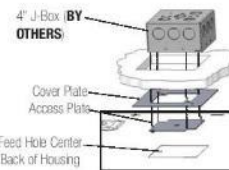
Bottom View



Top View

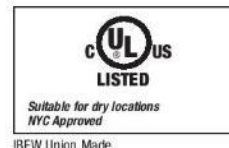


Side & End View



INSTALLATION

Cover and Access Plate covers wiring opening and provides access to standard 4" square or 3" Octagonal Junction Box by others. Order one Access Plate Assembly per unit.



- 1. Construction** - White injection molded Polycarbonate fascia. 22 gauge cold rolled steel housing post painted.
- 2. Wattage and CCT** - 22W with 2800 lm or 33W with 3800 lm in 3000K, 3500K, or 4000K color temperatures. 80+ typical CRI. 3-step MacAdam.
- 3. Optics** - Light guided via quadrification lens optic (QLO) for maximum luminaire efficiency, perfect glare reduction and bathing light distribution.

- 4. Driver** - Universal voltage 120/277V with integral 0-10V dimming. For non-dimming requirements, order DU driver and simply cap off the two control wires and connect the hot/neutral and ground as normal.
- 5. Mounting** Fixture housing has four mounting points to attach to the ceiling. Fixture is fed through a square opening in the back of the housing into a standard 4" junction box. The junction box is supplied by others. Cover plate is attached to junction box. Feed wire is passed through access plate into junction box. Access

- plate allows for inspection of splices after installation.
 - 6. Life** - 50,000 hours rated life. L80.
 - 7. Standby Battery Pack** - Iota CP05. 90 minutes, 5W, 700 lm.
 - 8. Weight** - 15lbs
- NOTE: For non-dimming installations, simply cap off the two control wires and connect the hot/neutral and ground as normal.**

Zumtobel Lighting, Inc. ©2015
3300 Route 9W
Highland, NY 12528-2630

845-691-6262
800-448-4131
zli.us@zumtobel.com

In a continuing effort to offer the best product possible we reserve the right to change, without notice, specifications or materials. Technical specification sheets that appear on www.zumtobel.us are the most recent version and supersede all other versions that exist in any other printed or electronic form.

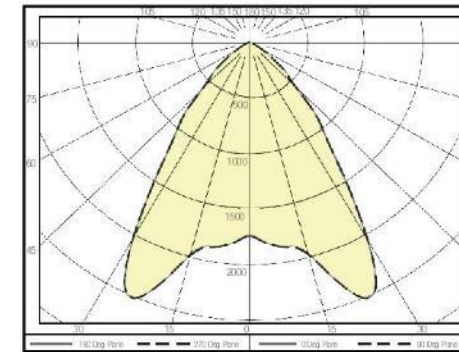


D0656TS 10/12/15

www.zumtobel.us

Photometric Data

MIREL LED 2X2 SURFACE
33W 3500K 115 LM / Watt



Candela Distribution

Average Luminance (cd/m2)				
Horizontal Angle (Degrees)				
	0	45	90	
Vertical Angle (degrees)	0	8312	8312	8312
	45	3786	3021	3820
	55	1805	1122	1820
	65	609	668	614
	75	293	325	289
85	302	293	293	

Effective Floor Cavity Reflectance 20%														
RC	80													0
RW	70	50	30	10	70	50	30	10	50	30	10	50	30	10
Values are expressed as Lumens delivered to the task surface														
0	4271	4271	4271	4271	4172	4172	4172	4172	3986	3986	3986	3817	3817	3817
1	4034	3919	3815	3722	3944	3840	3747	3662	3693	3618	3549	3558	3498	3442
2	3789	3584	3413	3270	3706	3520	3365	3233	3401	3273	3161	3292	3186	3093
3	3552	3281	3070	2902	3476	3229	3035	2878	3131	2966	2831	3041	2902	2785
4	3329	3009	2775	2597	3259	2966	2749	2580	2885	2697	2549	2810	2648	2518
5	3120	2767	2521	2339	3056	2731	2500	2328	2663	2461	2306	2600	2423	2284
6	2926	2551	2299	2119	2868	2521	2283	2111	2463	2252	2095	2409	2222	2080
7	2747	2358	2106	1929	2694	2332	2093	1923	2283	2068	1912	2236	2044	1900
8	2583	2186	1936	1764	2534	2163	1925	1760	2121	1905	1751	2081	1885	1743
9	2432	2031	1785	1620	2388	2012	1777	1616	1975	1760	1610	1940	1744	1603
10	2294	1893	1652	1492	2254	1876	1645	1490	1844	1631	1485	1813	1618	1480

All values are rated values. Luminous flux and connected electrical load are subject to an initial tolerance of +/- 10%. Tolerance of color temperature: +/- 150 K. Unless stated otherwise, the values apply to an ambient temperature of 25°C.

Zumtobel Lighting, Inc. ©2015
3300 Route 9W
Highland, NY 12528-2630

845-691-6262
800-448-4131
zli.us@zumtobel.com

In a continuing effort to offer the best product possible we reserve the right to change, without notice, specifications or materials. Technical specification sheets that appear on www.zumtobel.us are the most recent version and supersede all other versions that exist in any other printed or electronic form.

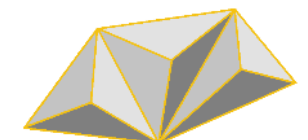


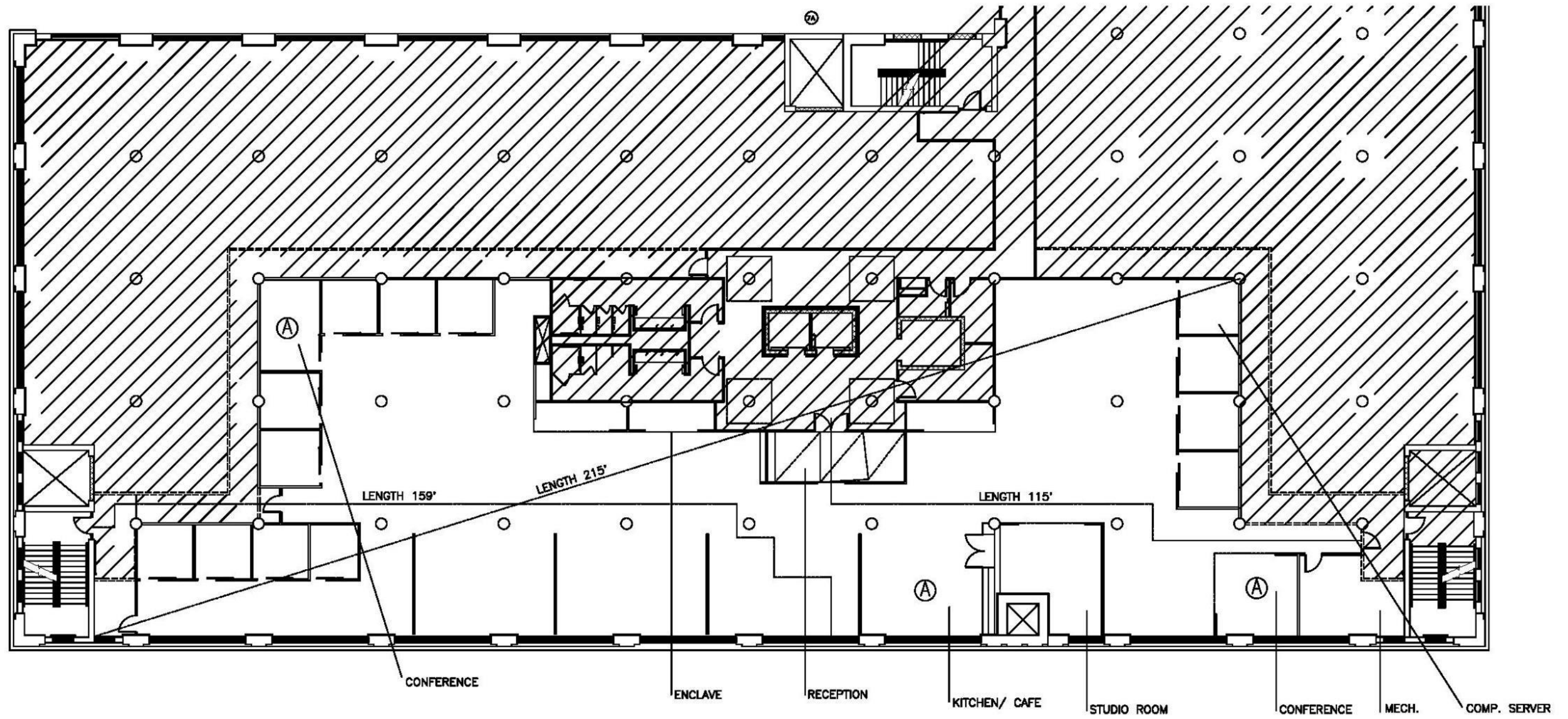
D0656TS 10/12/15

www.zumtobel.us

IDSN 3600 PORTFOLIO 2: LIGHTING ANALYSIS

MATTHEW BRACKETT





Ⓐ ASSEMBLY

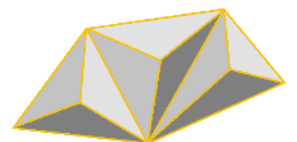
OCCUPANCY LOAD 10,200

LIFE SAFETY PLAN



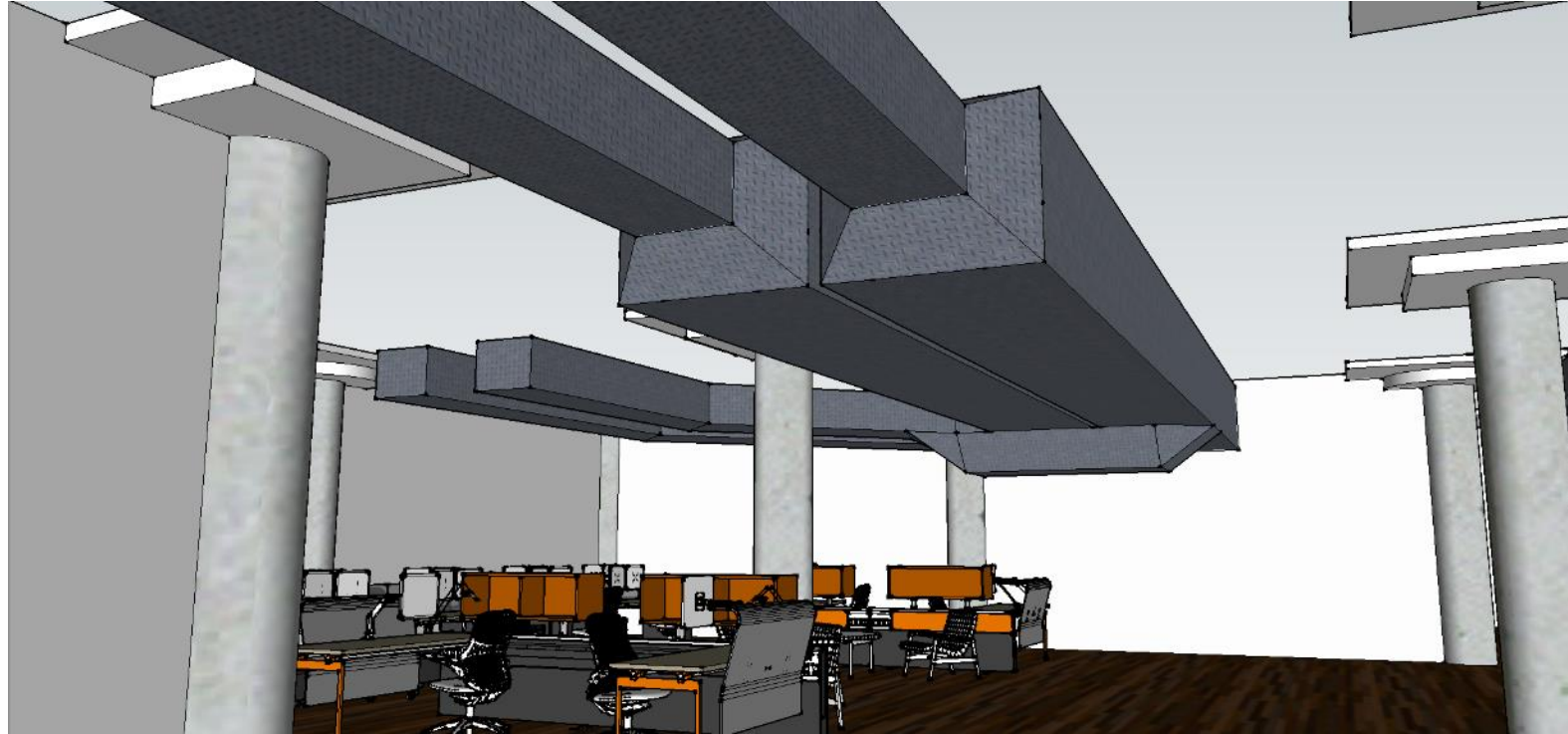
IDSN 3600 PORTFOLIO 2: LIFE SAFETY PLAN

MATTHEW BRACKETT

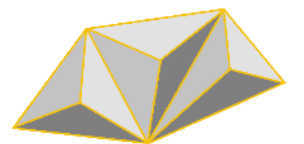


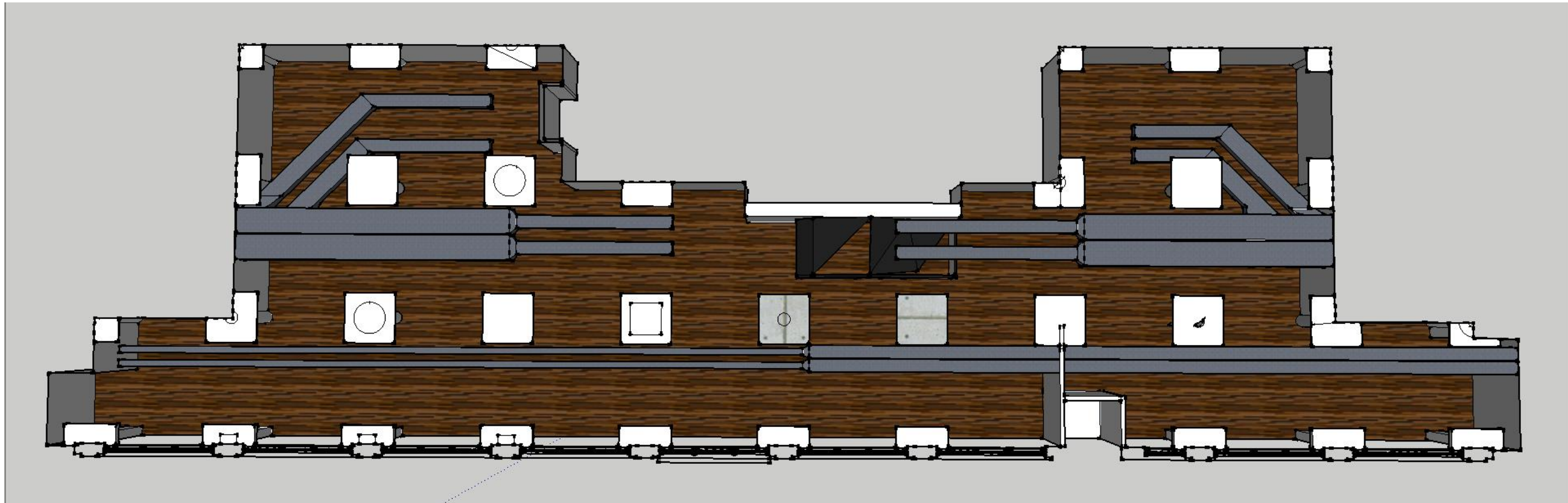
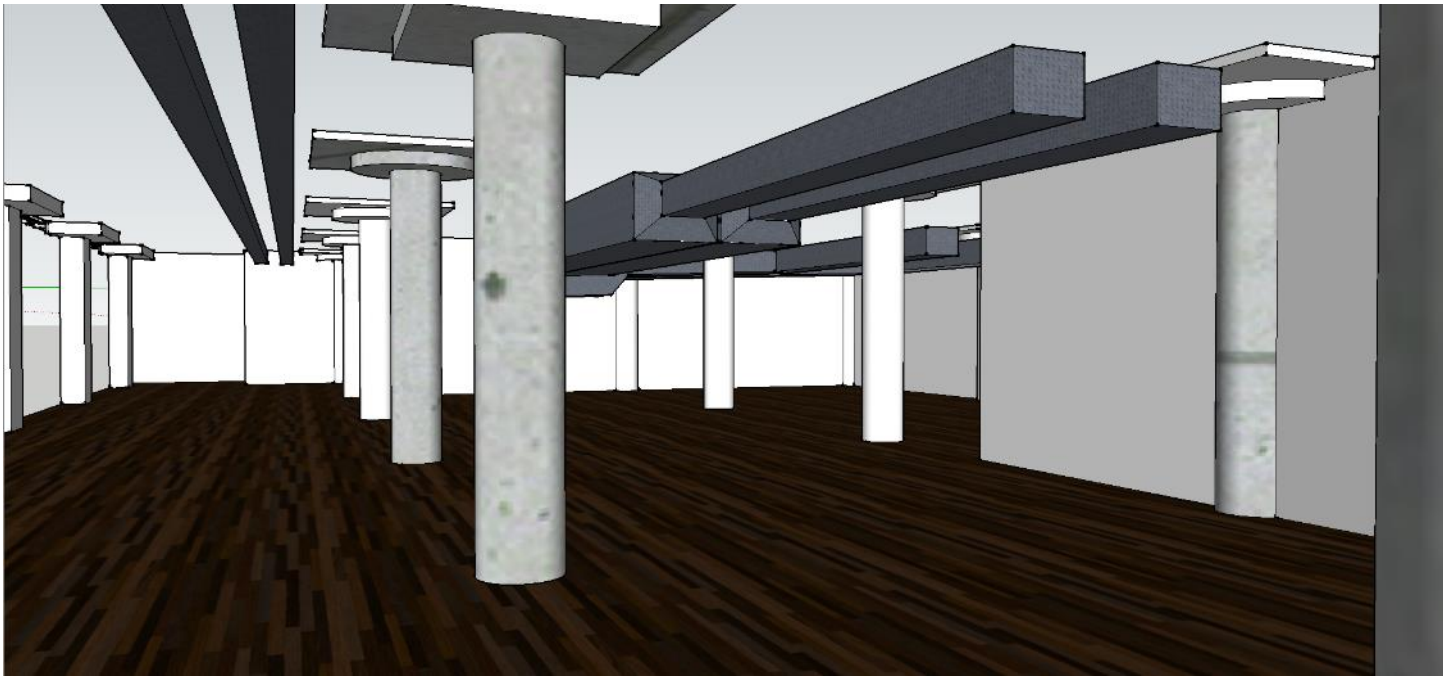
Building Construction and Occupancy									
Construction Type		Sprinklers?		Occupancy Type					
REINFORCED		YES		B					
Exit Requirements: Number and Arrangement of Exits									
Space Designation	# of Exits		Travel Distance			Arrangement: Means of Egress			
	Required	Shown on Plans	Allowable Distance	Actual Distance Shown on Plans		Req'd Distance Between Exits		Actual Distance Shown on Plans	
	2	3	300'	215		150'		274'	
Use Group or Space Designation	(A)	(B)	©			Exit Width (Inches)			
	Area = Sq. Ft.	Area per Occupant	Calculated Occupant Load = A/B	Egress per Occupant		Required Width = (A/B)xC		Actual Width	
				Stair	Level	Stair	Level	Stair	Level
	10,200	100	102	.3"	.2"	30.6"	20.4"	5'-5"	





IDSN 3600 PORTFOLIO 2: SYSTEMS RCP
MATTHEW BRACKETT





IDSN 3600 PORTFOLIO 2: SYSTEMS RCP
MATTHEW BRACKETT

