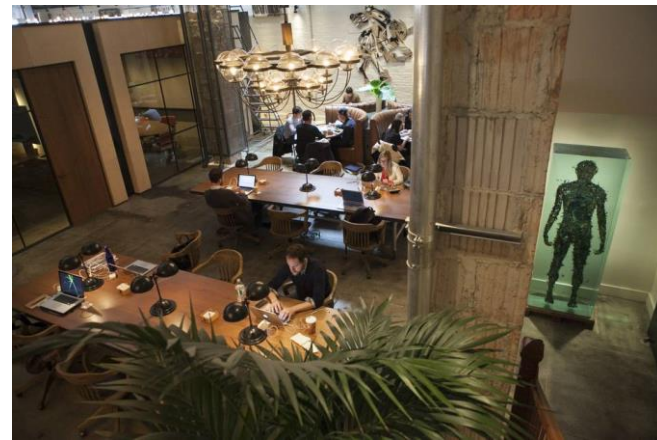

Rachel DiGiovanni
Portfolio 1
IDSN Systems 3600
Fall 2015

Concept Statement:

To create an atmosphere of productivity in a coffee shop type environment. A comfortable and aesthetically appealing space of growth where one can enjoy a cup of coffee and a croissant as they expand their businesses in a co-working style space. The main objective is to incorporate a sense of community to help build businesses all while designing offices that will make one feel at home.

Inspiration:



1
2
3
4
5
6
7
8
9
10
11
12
13
14
15
16
17
18
19
20
21
22
23
24
25
26
27
28
29
30
31
32
33
34
35
36
37
38
39
40
41
42
43
44
45
..

Executive									
PERSONNEL									
Position	Personnel Totals		Unit Square Ft.		Extended Sq. Feet	Equipment			Notes
	Current	Future	Office	Workstation		PC	Printer	Fax	
					0				
					0				
					0				
					0				
Director	4	2		36	72	2			300 square ft. each
					0				
					0				
Administrative Assistant	10	20		36	720	25	7		All admin. Assistants located together in own space
					0				
					0				
					0				
					0				
Personnel Totals:	14	22			792	27	7	0	
SUPPORT/EQUIPMENT SPACES									
Space	Support/Equipment		Unit Square Feet	Extended Sq. Feet	Location	Notes			
	Current	Future							
				0					
Waiting Area	1	1	100	100	Visible from reception	Seating for 4 guests			
				0					
Pantry	1	1	100	100	Near Admin Assts	Full Kitchen			
				0					
Fax/Copy	0	1	100	100	Near Admin Assts				
				0					
Storage	1	1	100	100	Scattered throughout	Shelving/Hooks			
				0					
File Drawers	25	100	3	300		3-Hi wooden cabinets			
				0					
Conference Room	2	2	200	400	Adjacent to Waiting Area	Full AV, Fits 8-10 people			
				0					
				0					
Support Totals:				1100					

Department Summary Information:	
Personnel	792 Square Ft.
Equipment	1100 Square Ft.
Sub Total:	1892 Square Ft.
Circulation	1.54
Total Carpetable:	2913.7 Square Ft.

Interviewee:
 Interview Date:
 Revision Submitted:
 Sign Off:

Department Notes:
 Entire company is progressive
 Space is attractive
 Uses idea of co-working

1
2
3
4
5
6
7
8
9
10
11
12
13
14
15
16
17
18
19
20
21
22
23
24
25
26
27
28
29
30
31
32
33
34
35
36
37
38
39
40
41
42
43
44
45

Administration									
PERSONNEL									
Position	Personnel Totals		Unit Square Ft.		Extended Sq. Feet	Equipment			Notes
	Current	Future	Office	Workstation		PC	Printer	Fax	
Finance					0				
Manager	10	20		36	720	10	2		
Clerical	10	20		36	720	10	2		
					0				
					0				
					0				
					0				
					0				
					0				
					0				
					0				
					0				
					0				
Personnel Totals:	20	40			1440	20	4	0	
SUPPORT/EQUIPMENT SPACES									
Space	Support/Equipment		Unit Square Feet	Extended Sq. Feet	Location	Notes			
	Current	Future							
Finance				0					
File Drawers	50	50	1.8	90	Lockable room	5-Hi cabinets			
Equipment	1	1	100	100	Next to work area	3 Printers, shredder, work counter			
				0					
				0					
				0					
				0					
				0					
				0					
				0					
				0					
				0					
Support Totals:				190					

Department Summary Information:
 Personnel 1440 Square Ft.
 Equipment 190 Square Ft.
 Sub Total: 1630 Square Ft.
 Circulation 1.54
 Total Carpetable: 2510.2 Square Ft.

Interviewee:
 Interview Date:
 Revision Submitted:
 Sign Off:

Department Notes:

1
2
3
4
5
6
7
8
9
10
11
12
13
14
15
16
17
18
19
20
21
22
23
24
25
26
27
28
29
30
31
32
33
34
35
36
37
38
39
40
41
42
43
44
45
46
47

Account Admin									
PERSONNEL									
Position	Personnel Totals		Unit Square Ft.		Extended Sq. Feet	Equipment			Notes
	Current	Future	Office	Workstation		PC	Printer	Fax	
					0				
Account Executive	3	6		36	216	2			
					0				
Account Manager	4	8		36	288	2			
					0				
Administrative Assistant	2	4		36	144	2	4	4	Shared by entire Production staff
					0				
					0	4			
					0				
					0				
					0				
					0				
					0				
					0				
Personnel Totals:	9	18			648	10	4	4	
SUPPORT/EQUIPMENT SPACES									
Space	Support/Equipment		Unit Square Feet	Extended Sq. Feet	Location	Notes			
	Current	Future							
				0					
File Drawers	10	30	3	90	Near Admin Assts	3-Hi cabinets			
				0					
Equipment	1	1	100	100	Near Admin Assts	Copier, work counter			
				0					
Storage	0	1	100	100		Shelving; can be spread throughout			
				0					
				0		Lockable room; shelving			
				0					
				0					
				0					
				0					
				0					
Support Totals:				290					

Department Summary Information:	
Personnel	648 Square Ft.
Equipment	290 Square Ft.
Sub Total:	938 Square Ft.
Circulation	1.54
Total Carpetable:	1444.5 Square Ft.

Interviewee:
 Interview Date:
 Revision Submitted:
 Sign Off:

Department Notes:

1
2
3
4
5
6
7
8
9
10
11
12
13
14
15
16
17
18
19
20
21
22
23
24
25
26
27
28
29
30
31
32
33
34
35
36
37
38
39
40
41
42
43
44
45

Creative Services									
PERSONNEL									
Position	Personnel Totals		Unit Square Ft.		Extended Sq. Feet	Equipment			Notes
	Current	Future	Office	Workstation		PC	Printer	Fax	
Team Manager	10	20		36	720	5	2		
					0				
					0	5	2		
					0				
					0				
					0				
					0				
					0				
					0				
					0				
					0				
					0				
Personnel Totals:	10	20			720	10	4	0	
SUPPORT/EQUIPMENT SPACES									
Space	Support/Equipment		Unit Square Feet	Extended Sq. Feet	Location	Notes			
	Current	Future							
				0					
				0					
				0					
				0					
Work Area	1	0	36	0	Adjacent to Teams	Work counters			
				0					
				0					
				0					
				0					
				0					
				0					
				0					
Support Totals:				0					

Department Summary Information:	
Personnel	720 Square Ft.
Equipment	0 Square Ft.
Sub Total:	720 Square Ft.
Circulation	154
Total Carpetable:	1109 Square Ft.

Interviewee:
Interview Date:
Revision Submitted:
Sign Off:

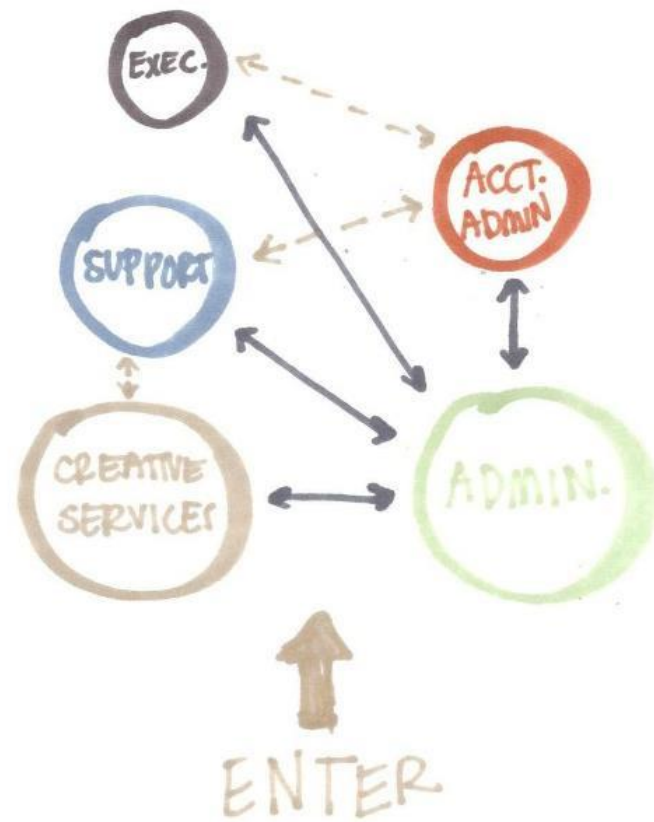
Department Notes:

Rachel DiGiovanni
Portfolio 2
IDSN Systems 3600
Fall 2015

KEY

MAJOR

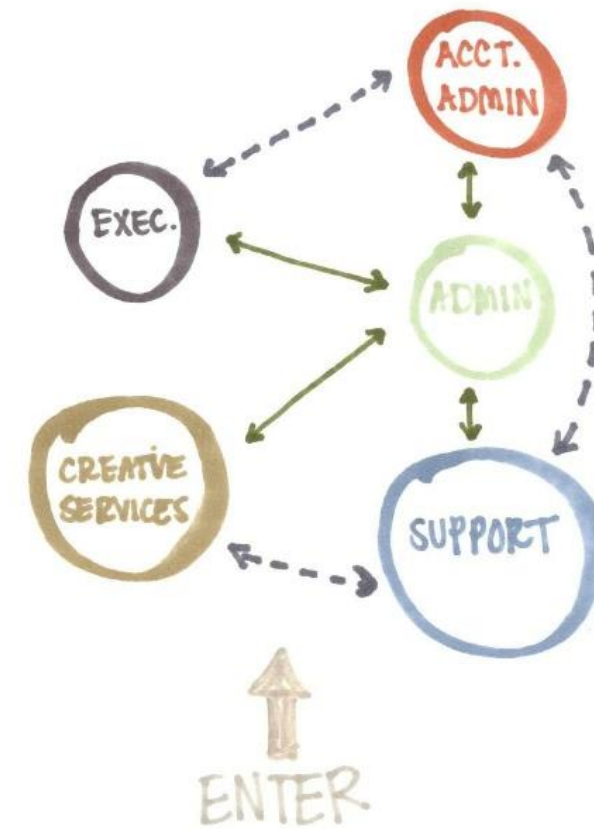
MINOR



KEY

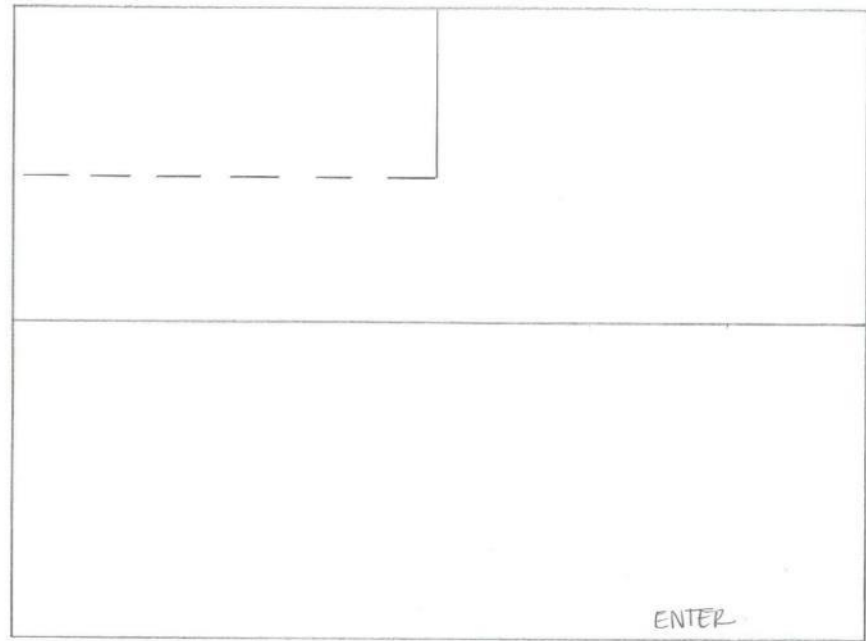
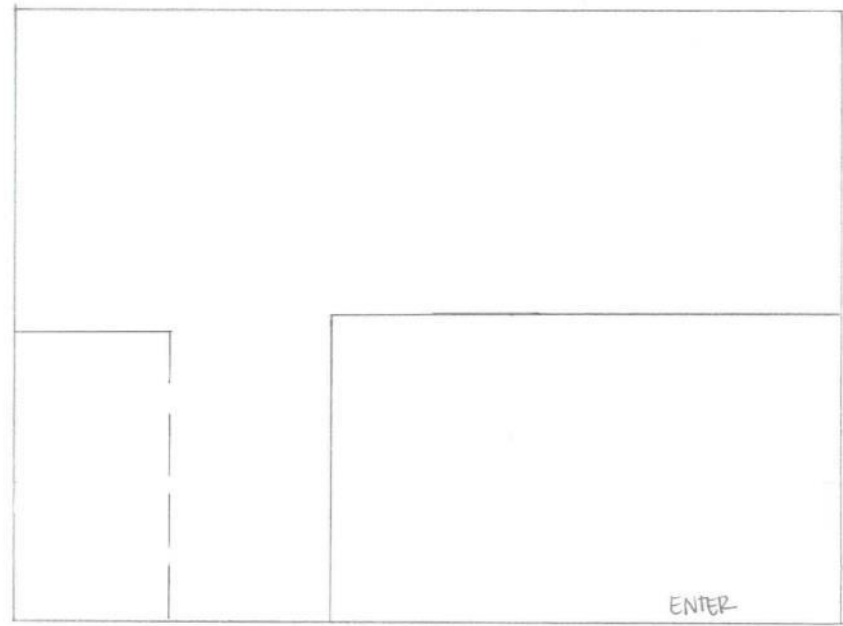
MAJOR

MINOR



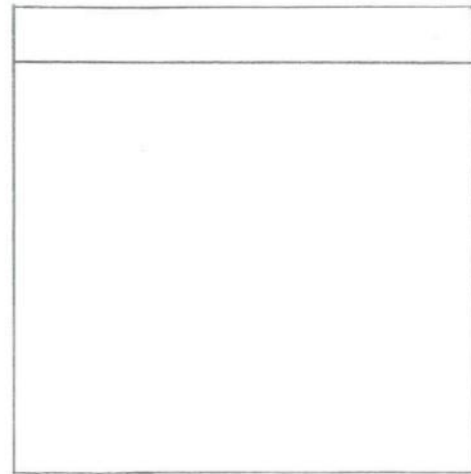
Assignment 4 – Rachel DiGiovanni

Bubble Diagrams

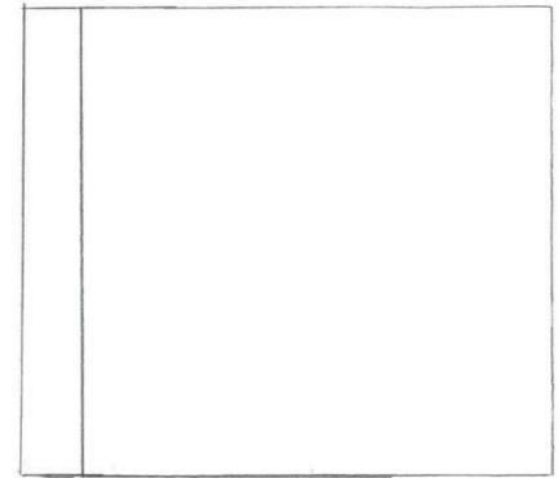


36 in

①

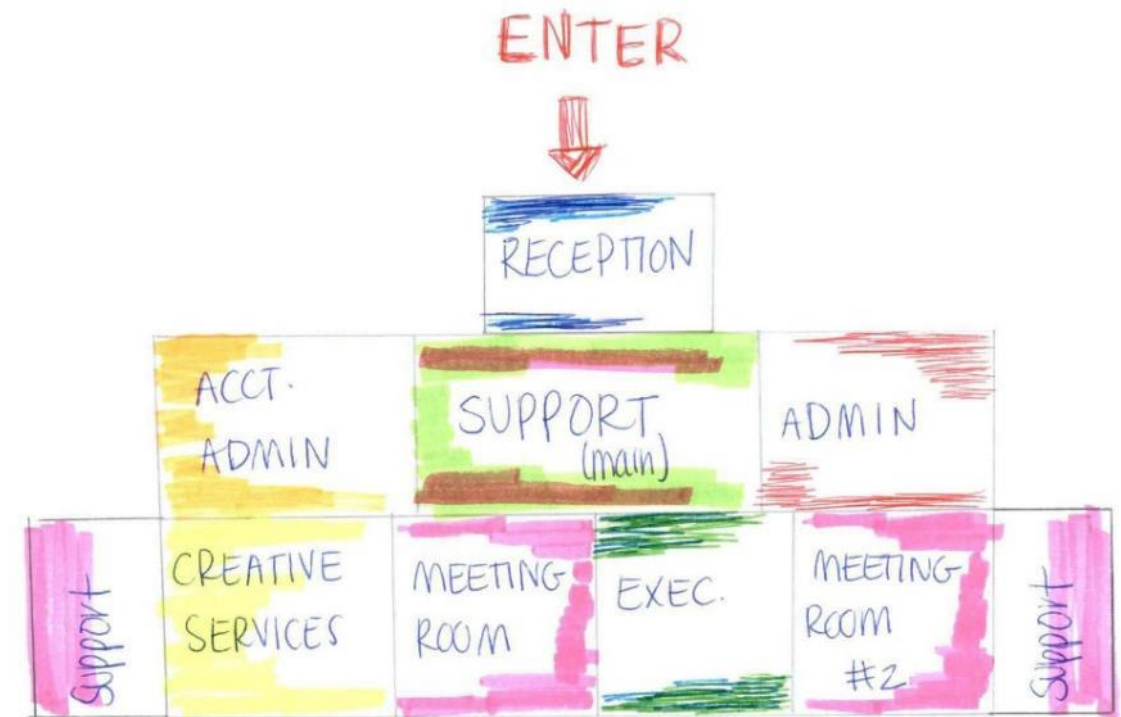


②

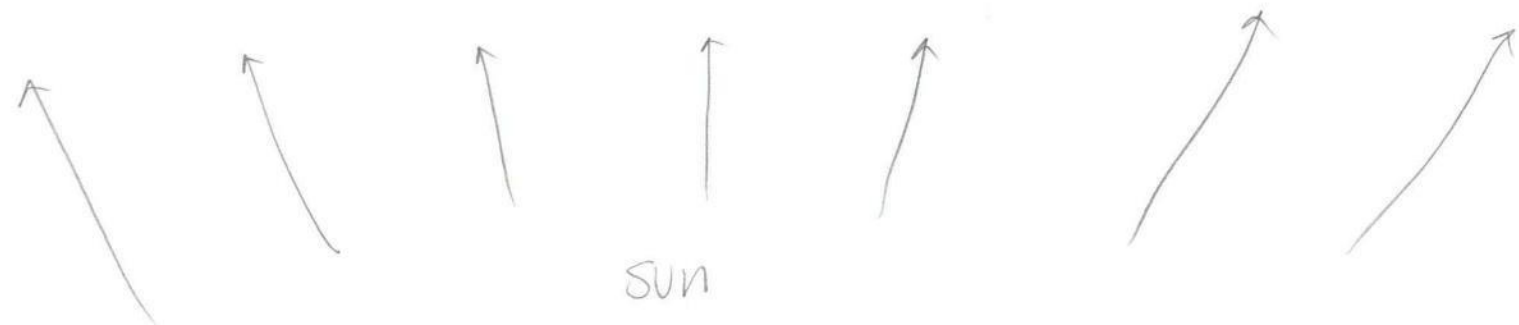
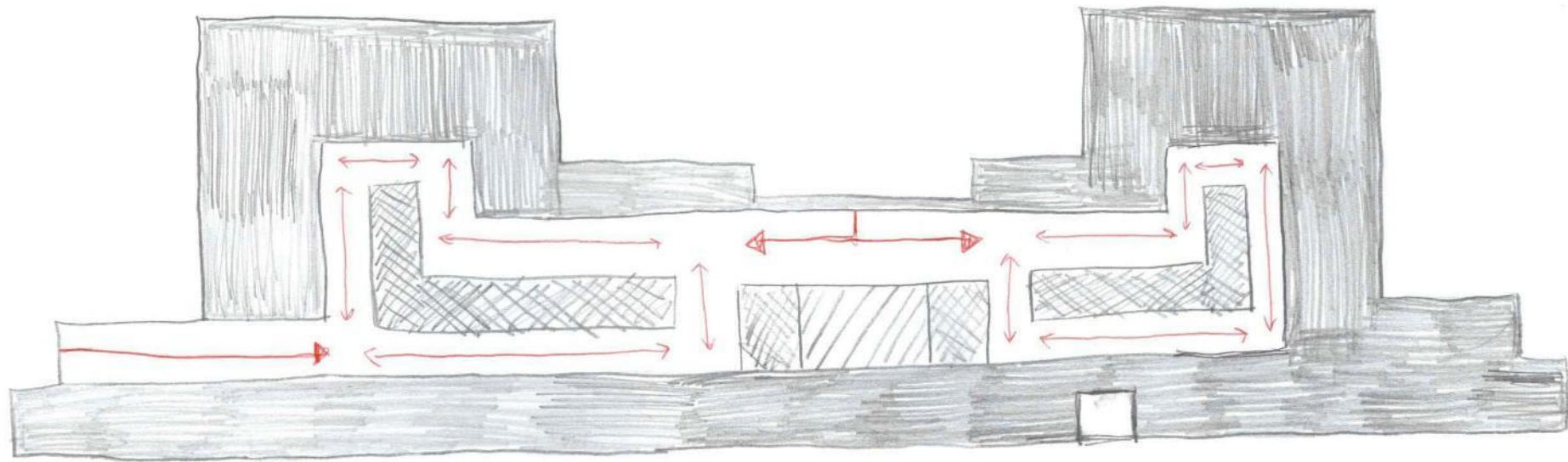
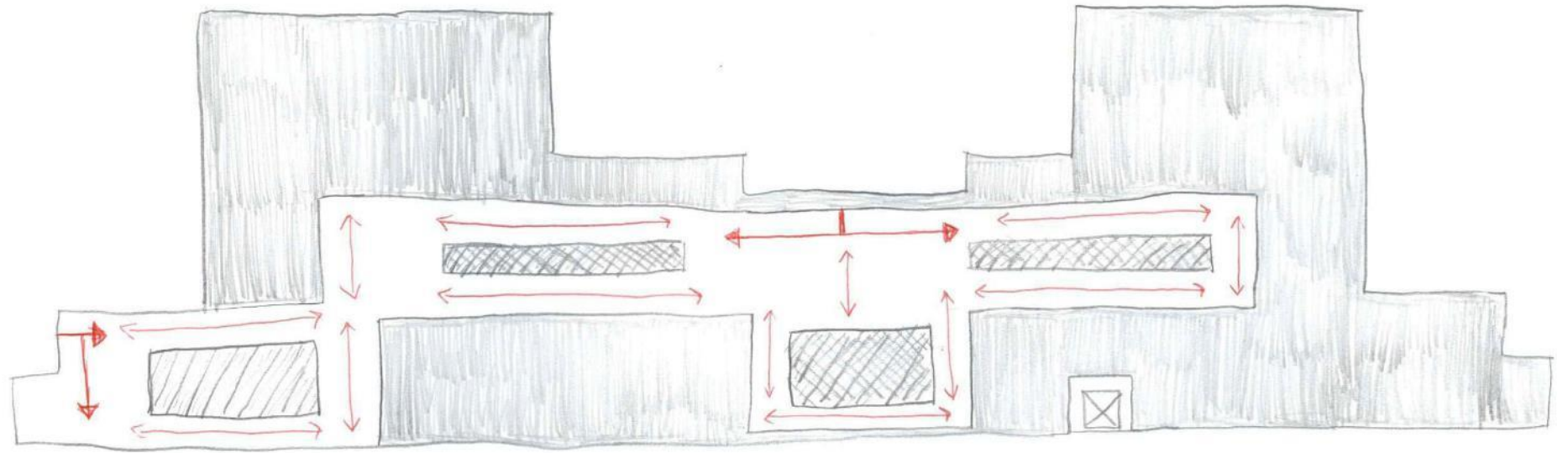


Wider, with a storage bar

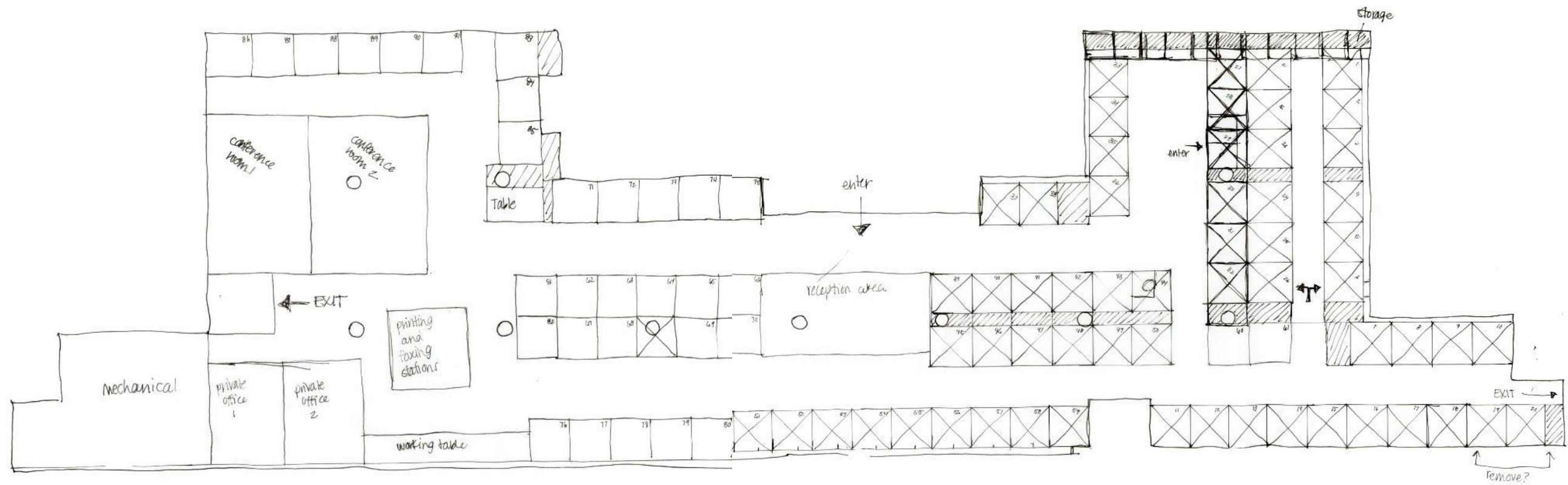
Assignment 4 – Rachel DiGiovanni
Space Standard Drawings



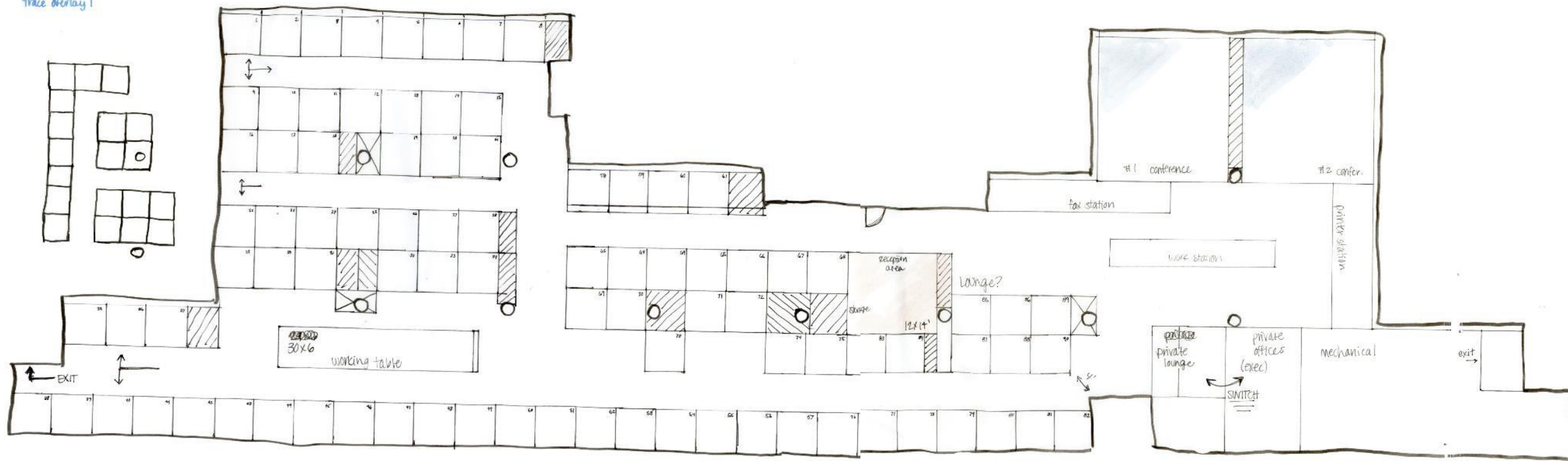
Assignment 4 – Rachel DiGiovanni
Blocking Diagrams



Assignment 5 – Rachel DiGiovanni
Spatial Concept Sketches



Layout 2
 ↳ left side
 trace overlay 1

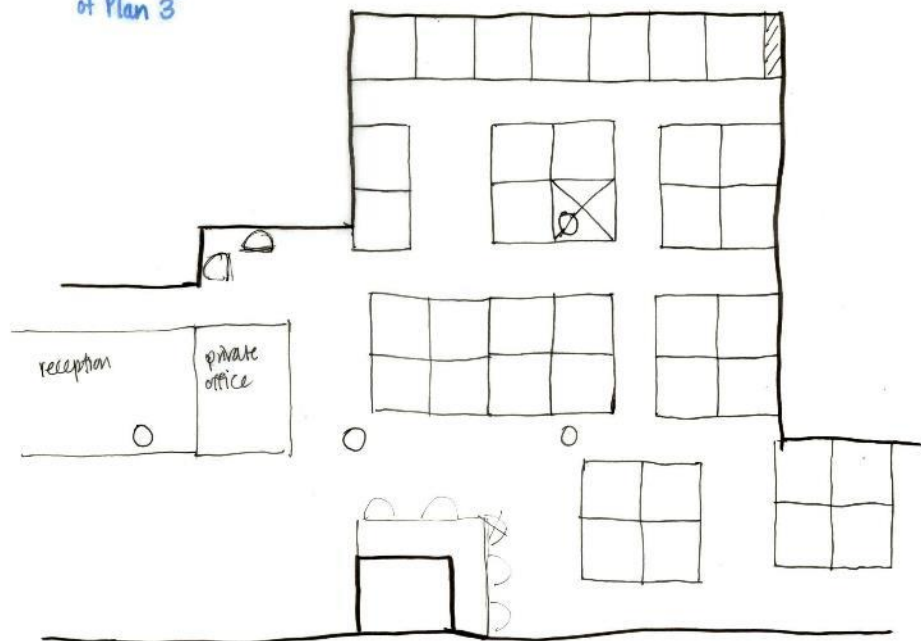


Assignment 6 – Rachel DiGiovanni: Space Plan Sketches

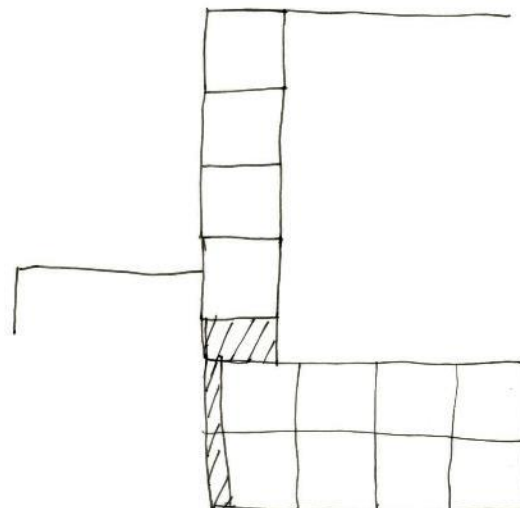
3
solid plan
soft bamboo wood



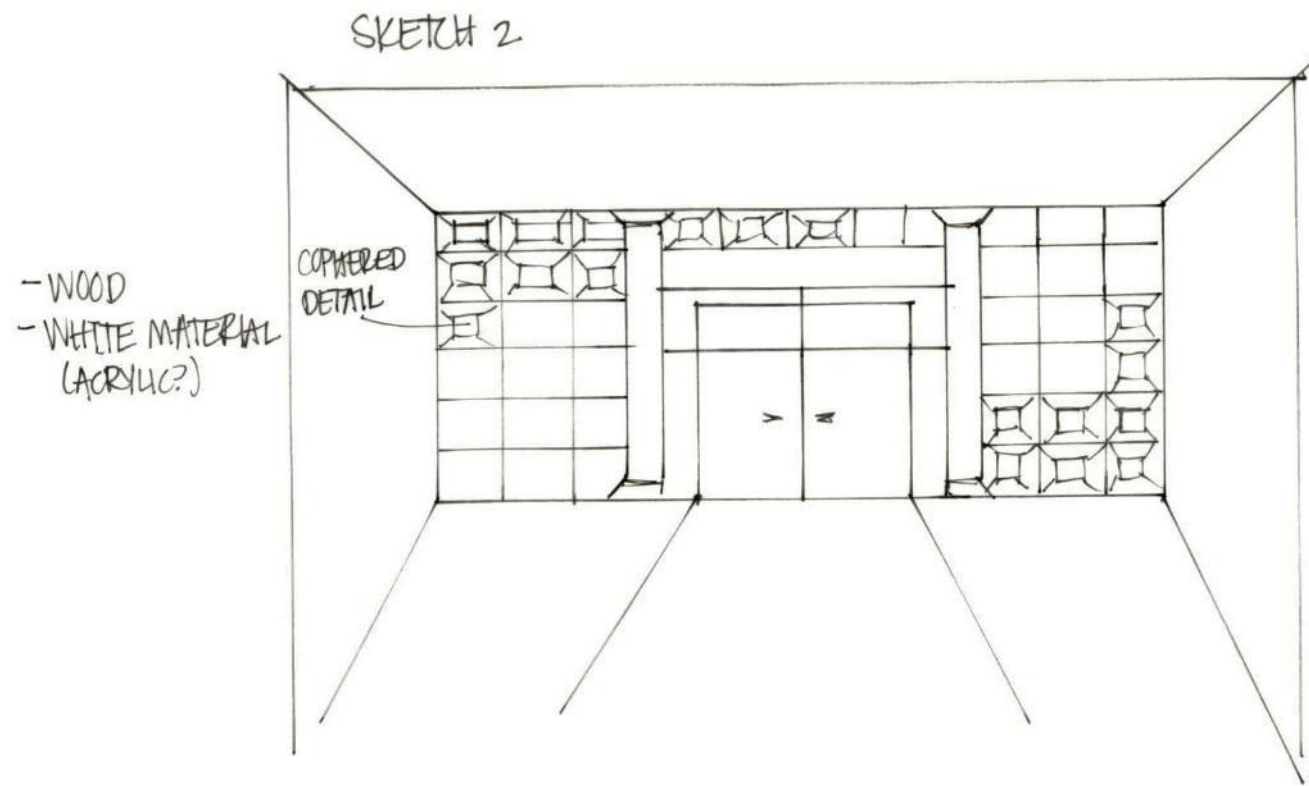
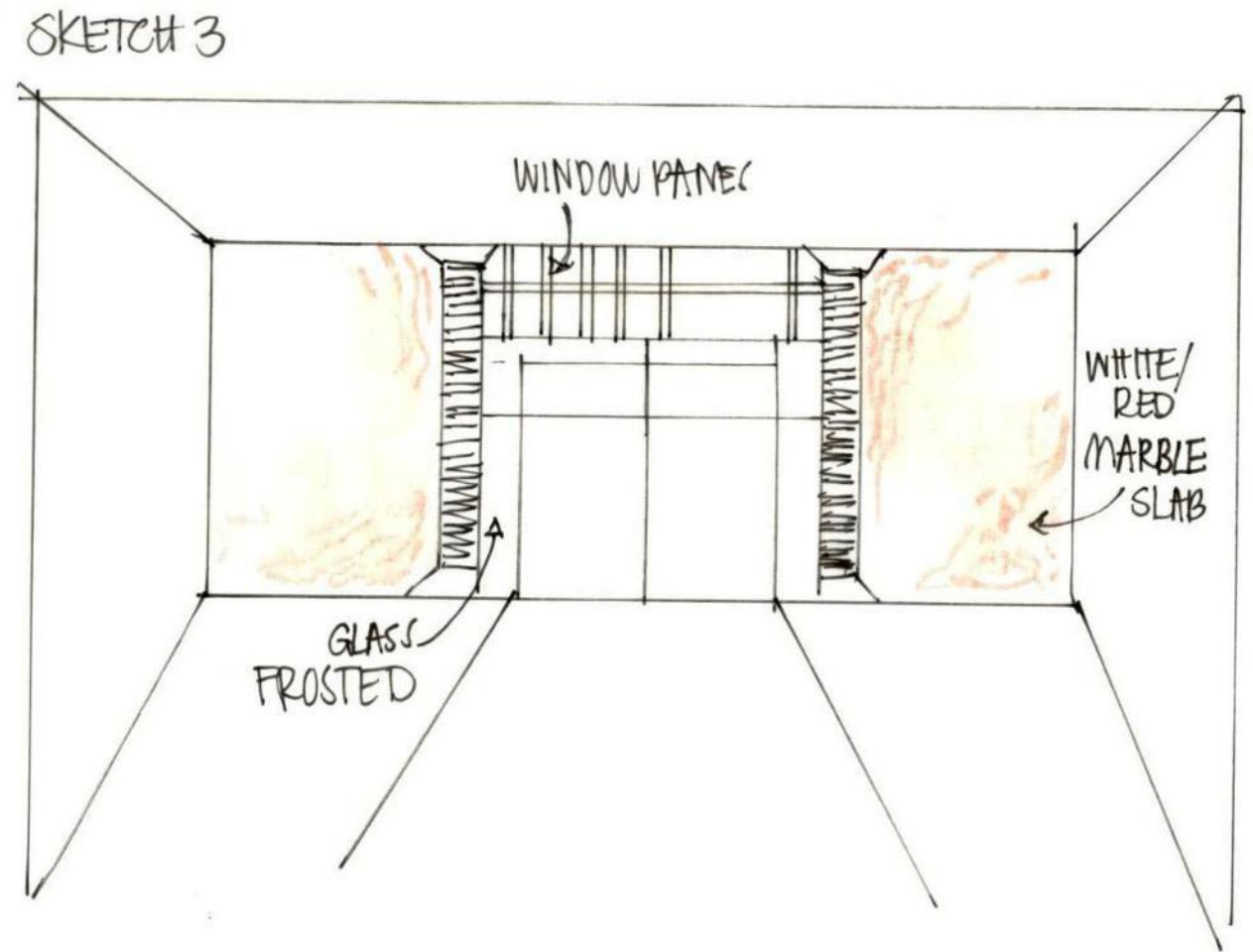
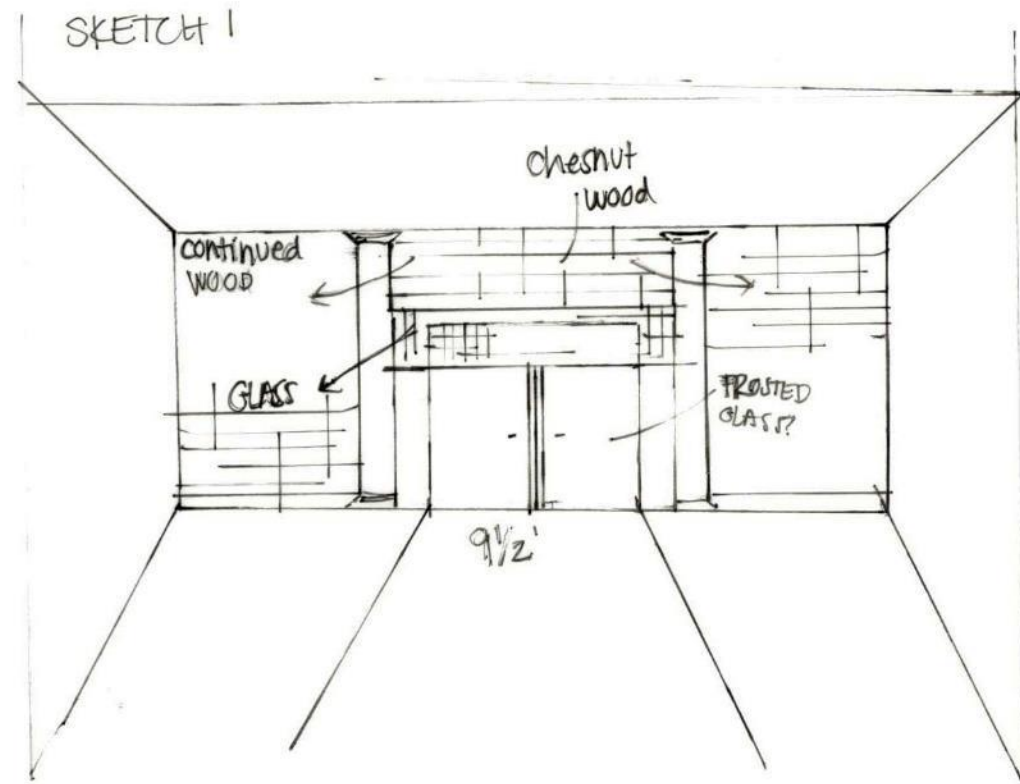
Right side
↳ trace overlay 2
of Plan 3



trace overlay
of the
trace overlay 2

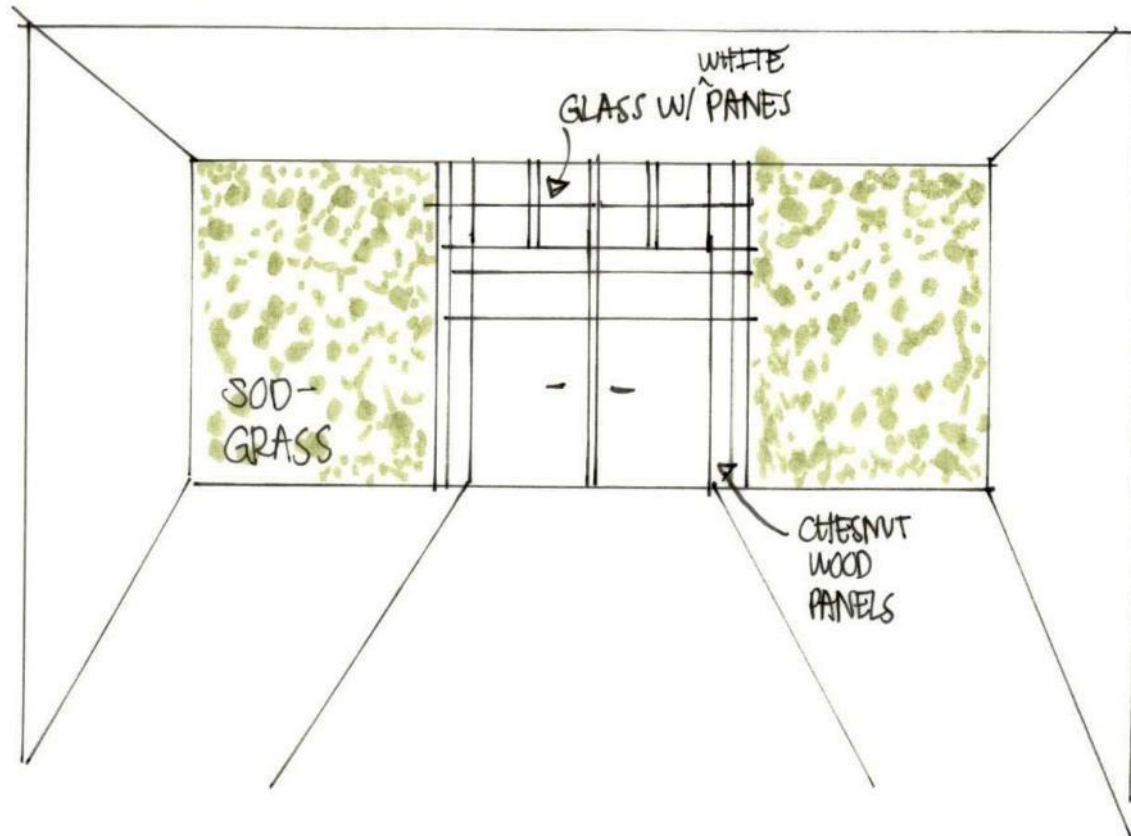


Assignment 6 – Rachel DiGiovanni
Space Plan Sketches

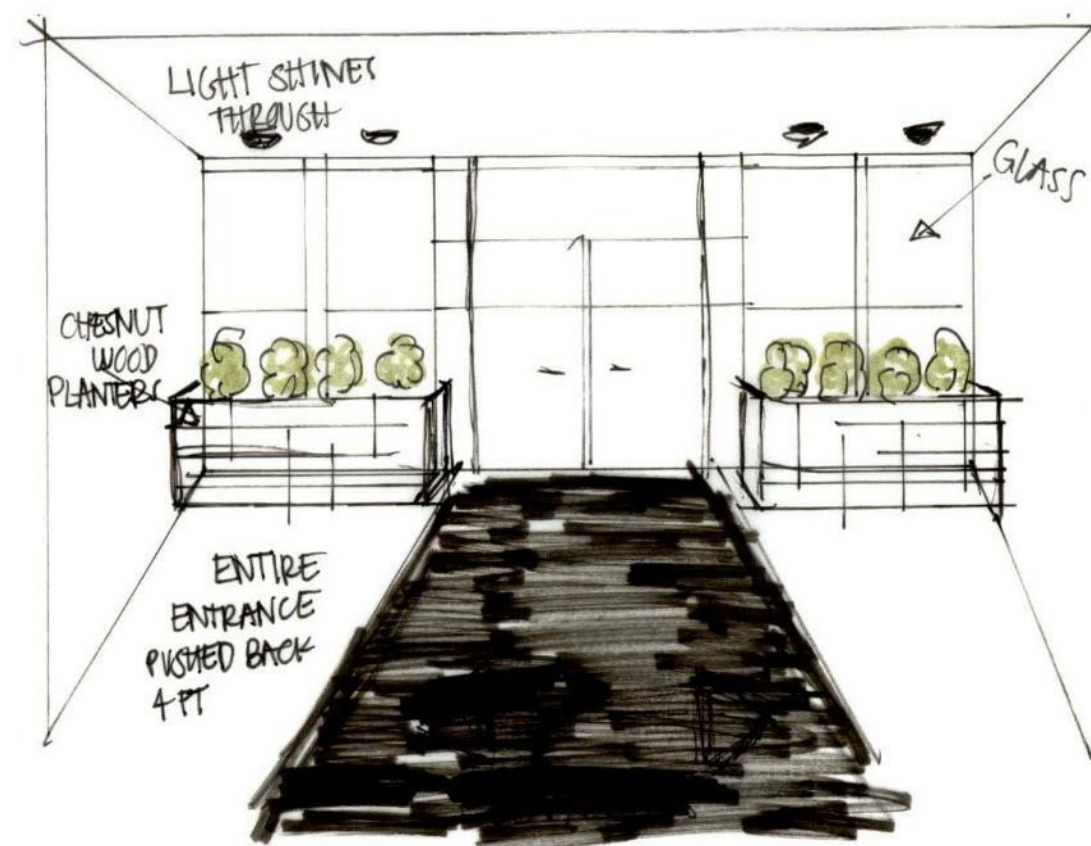


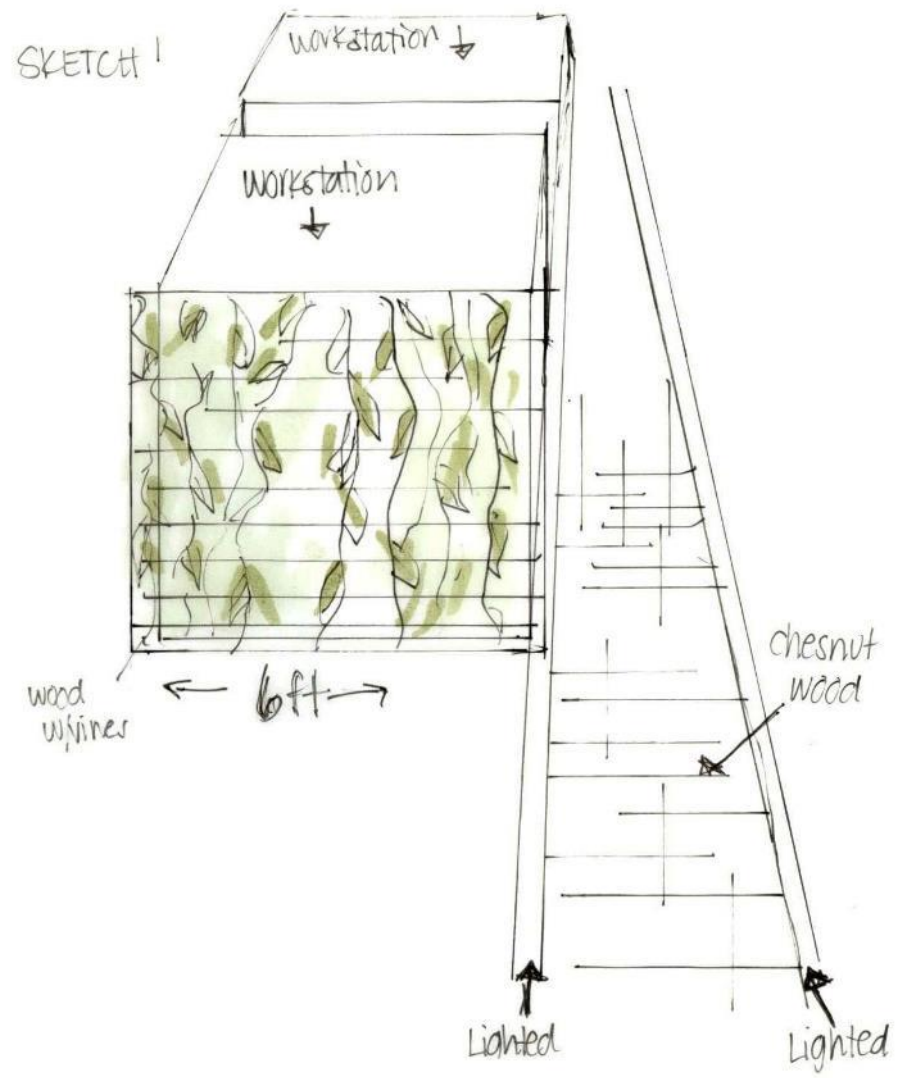
Assignment 7 – Rachel DiGiovanni
Entry Sketches

SKETCH 4

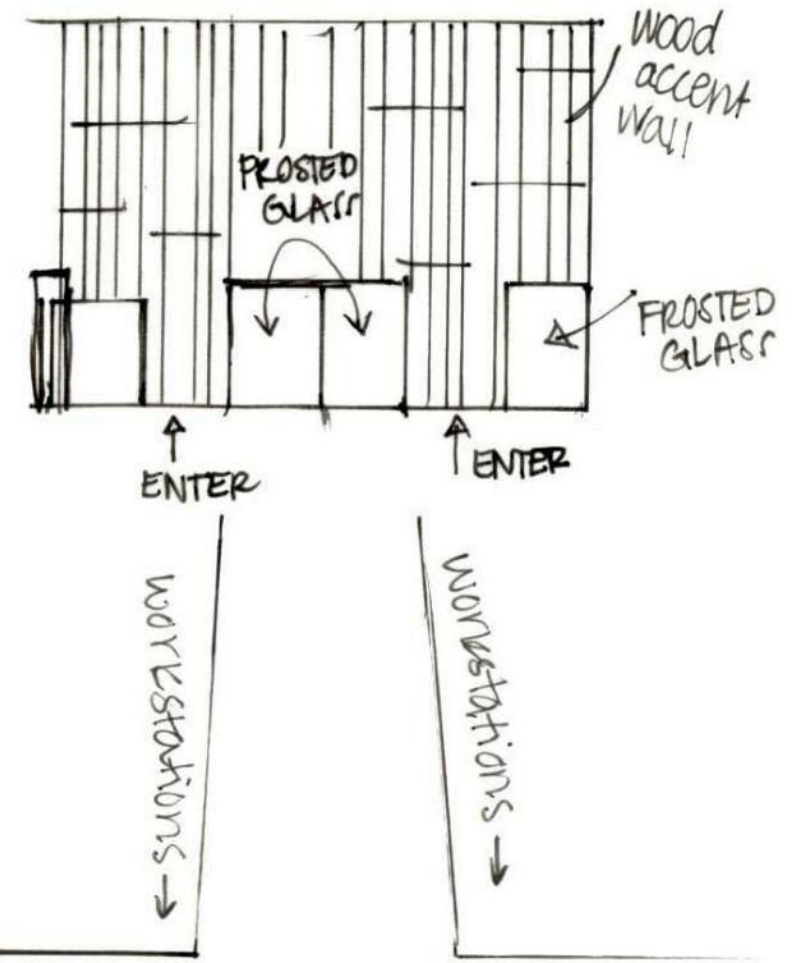


SKETCH 5

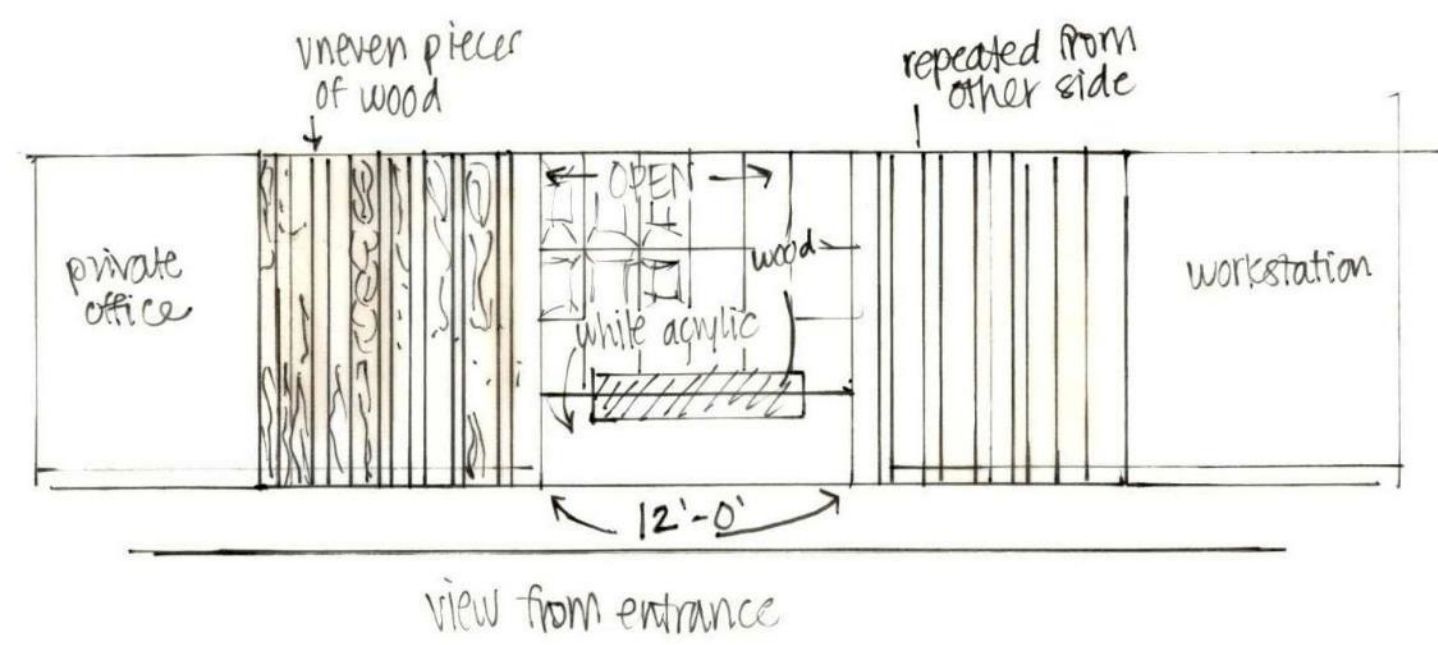




SKETCH 3
BACK RIGHT WALL

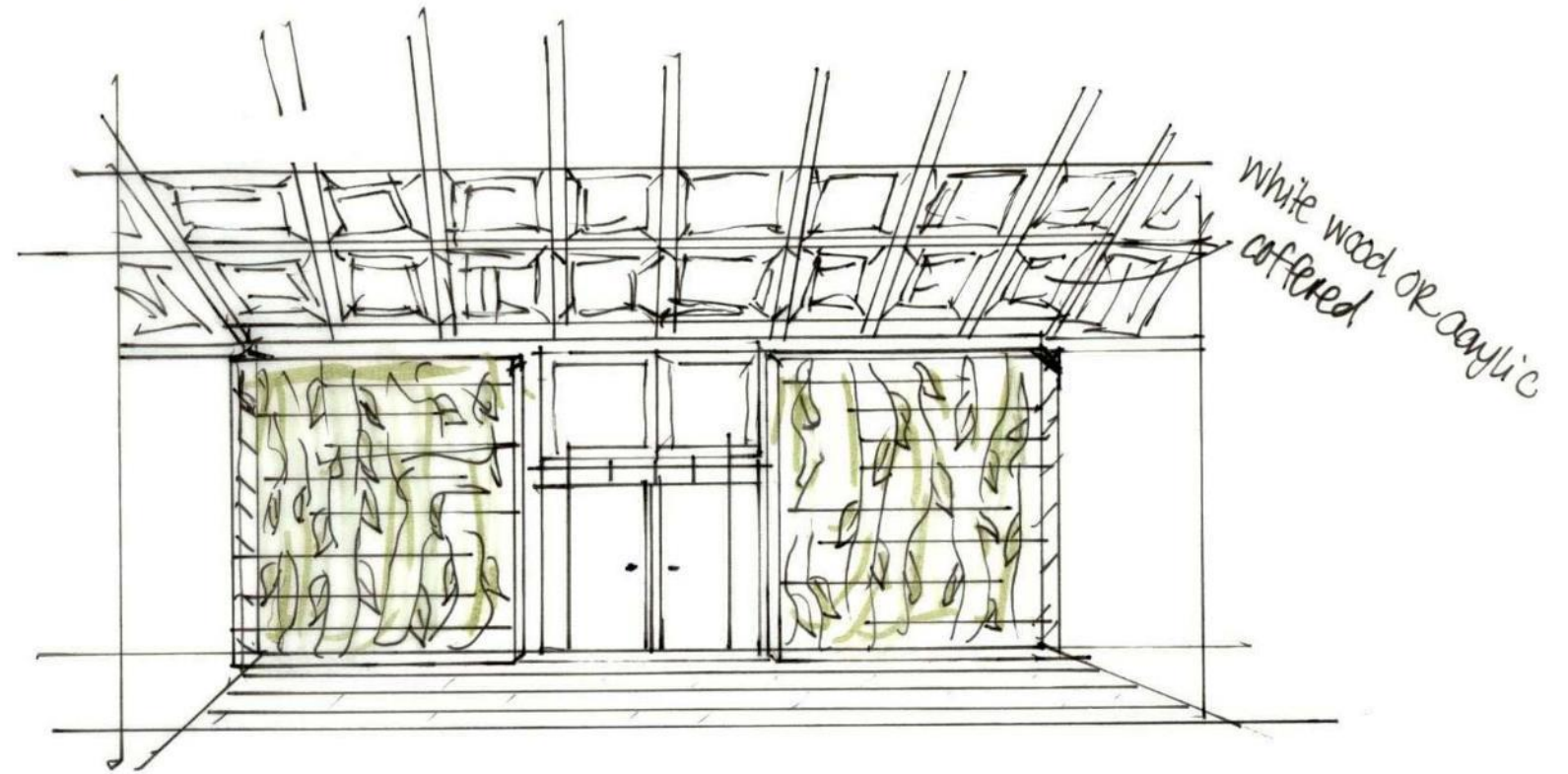


SKETCH 2

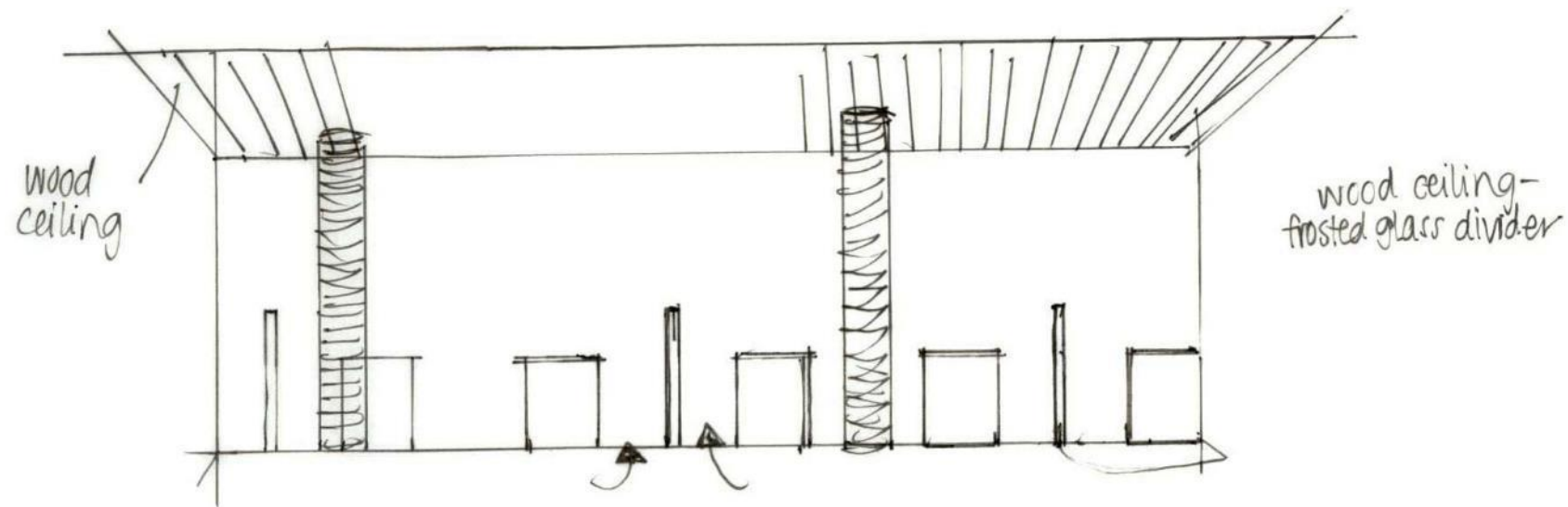


Assignment 7 – Rachel DiGiovanni
Main Corridor Sketches

SKETCH 4

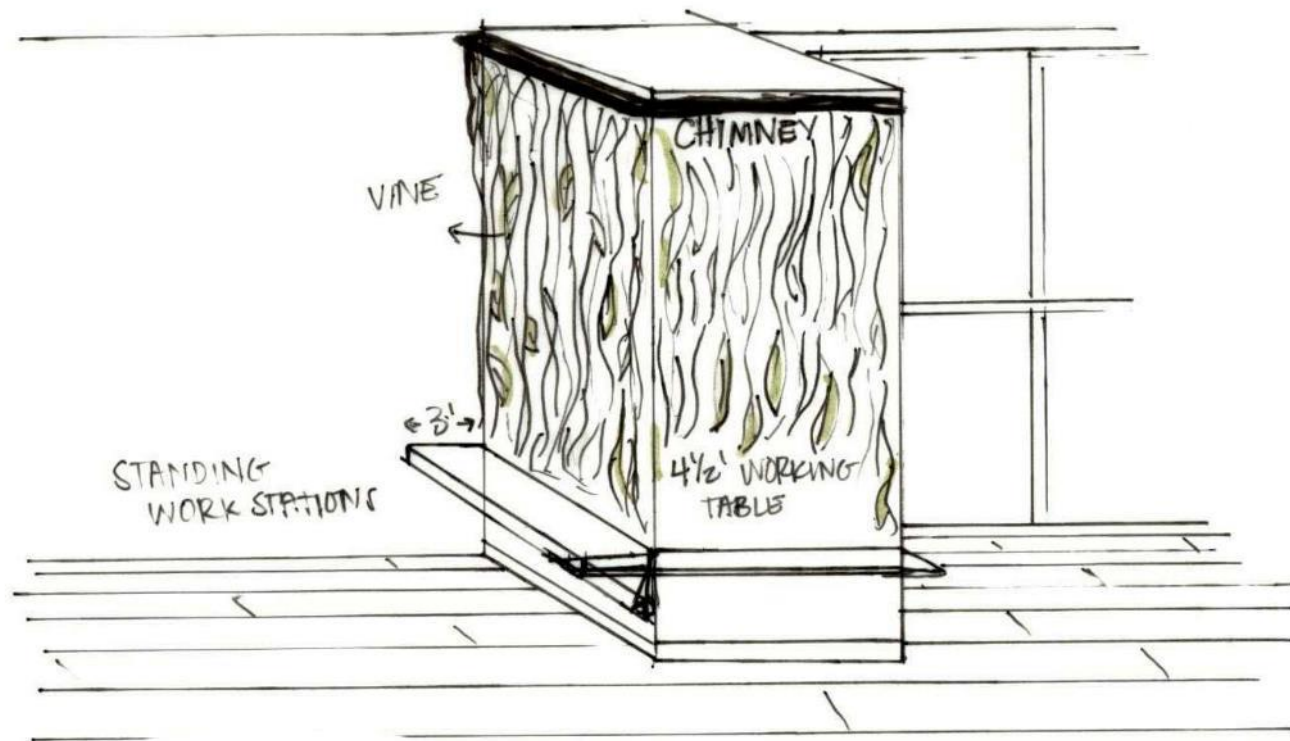


SKETCH 5

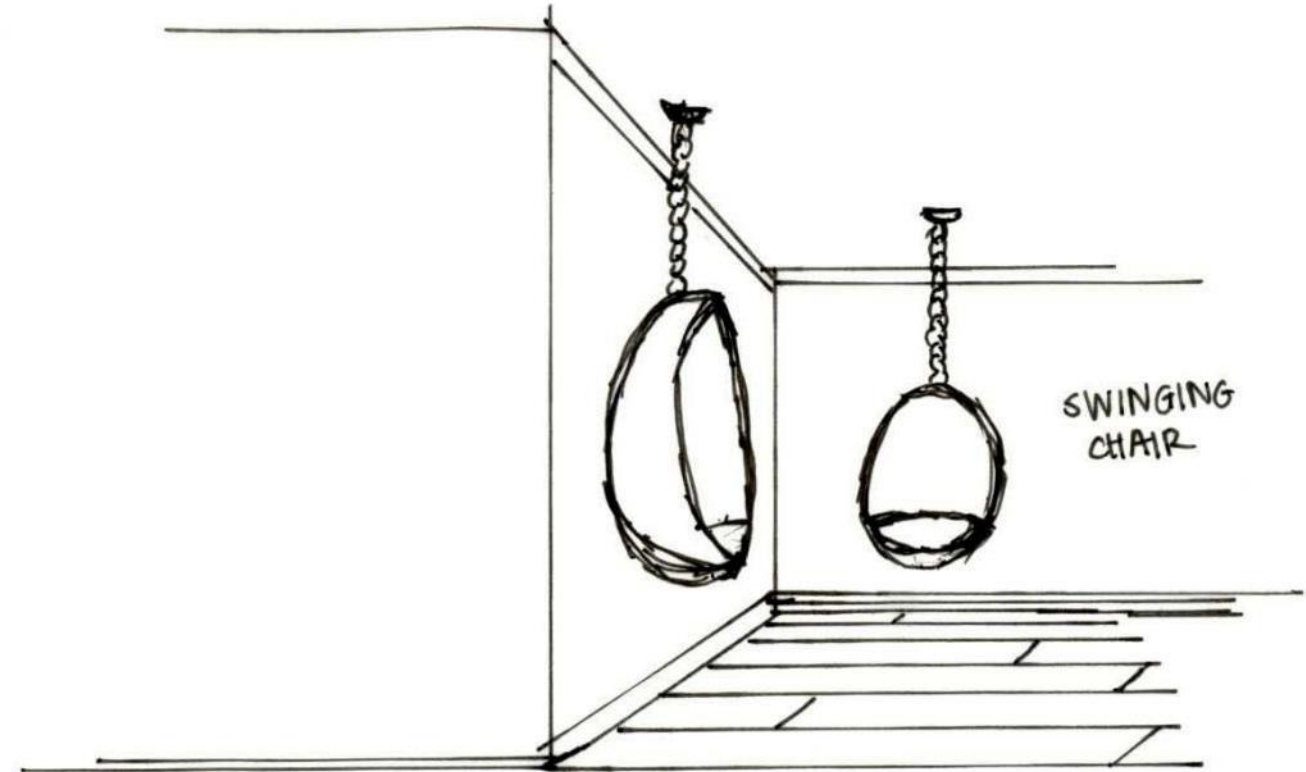


Assignment 7 – Rachel DiGiovanni
Main Corridor Sketches

SKETCH 1
LOUNGE SKETCH

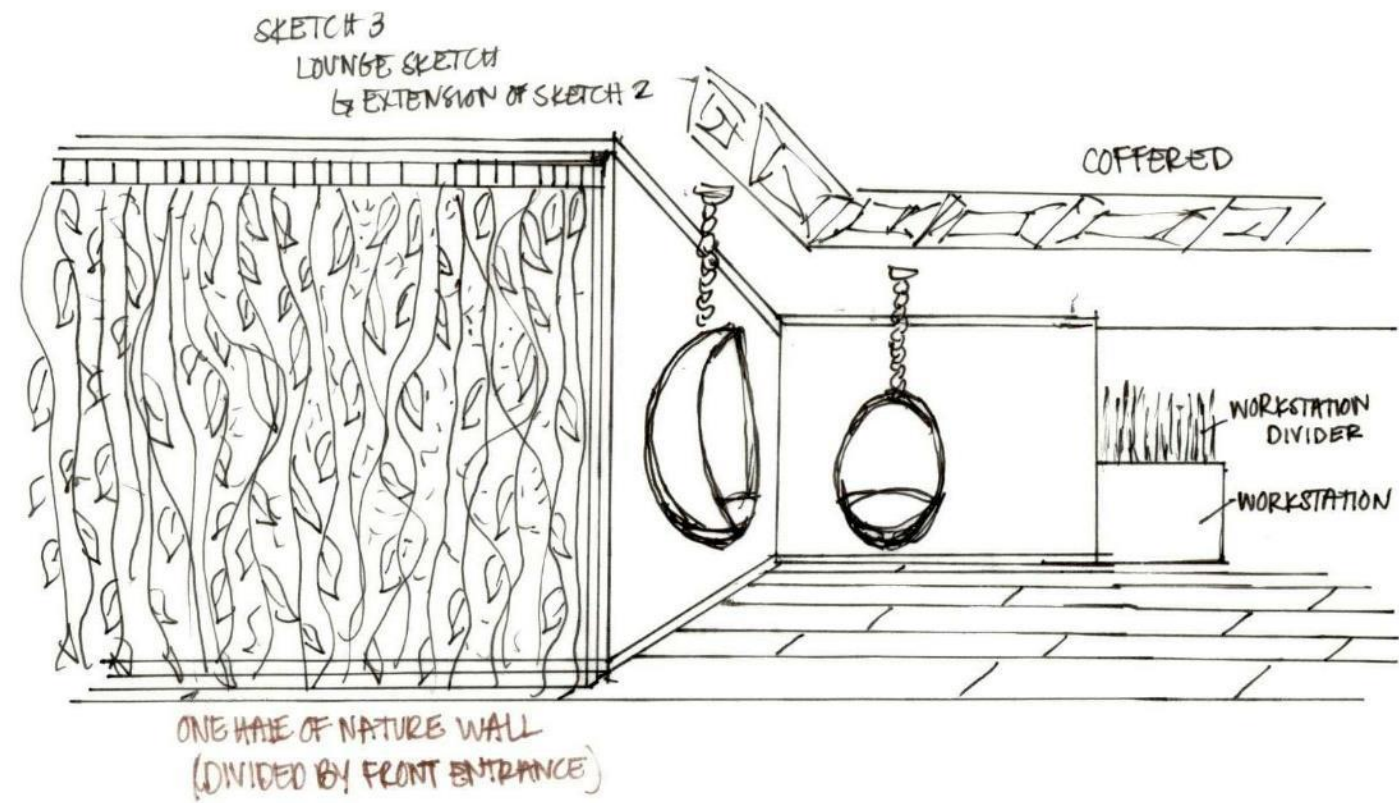


SKETCH 2
LOUNGE SKETCH

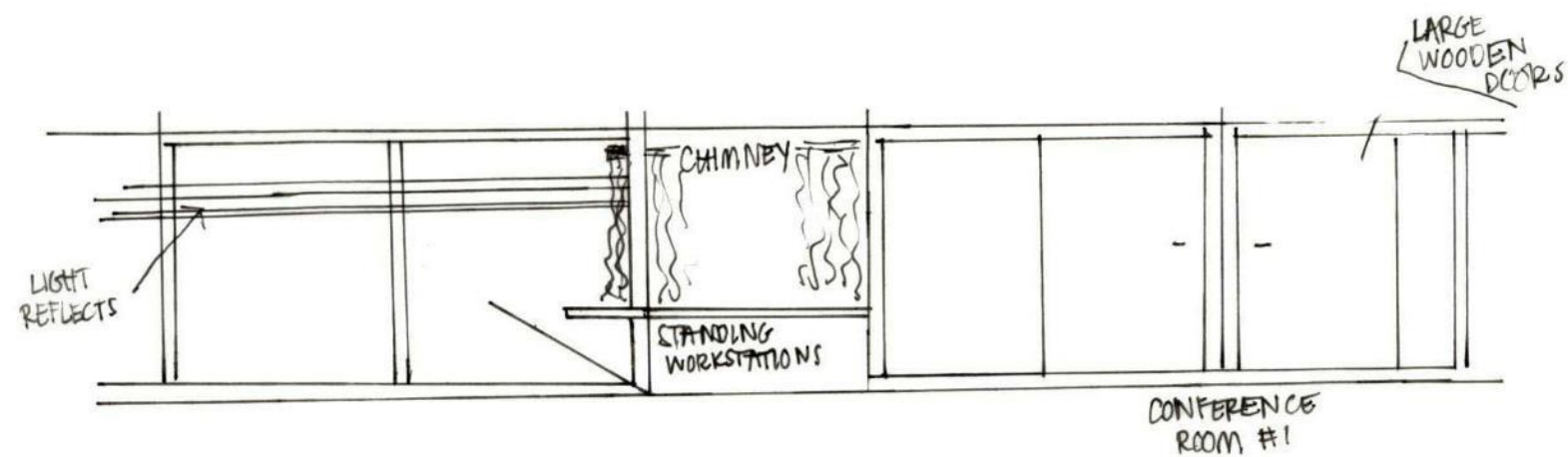


Assignment 8 – Rachel DiGiovanni

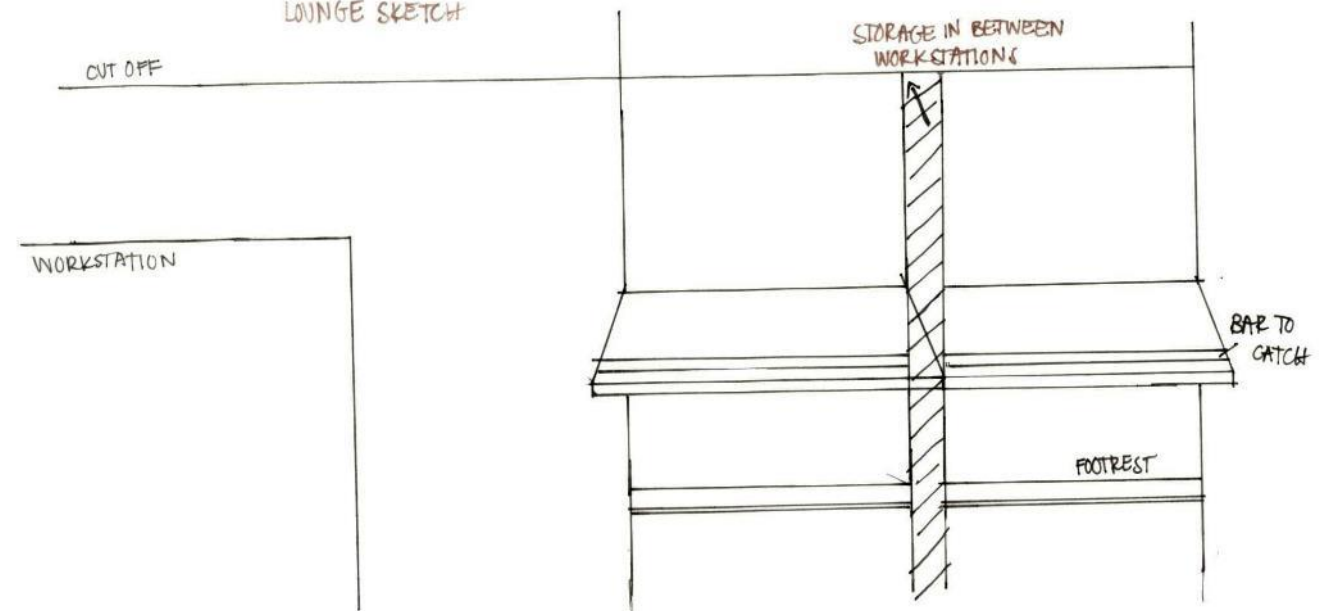
Lounge Sketches



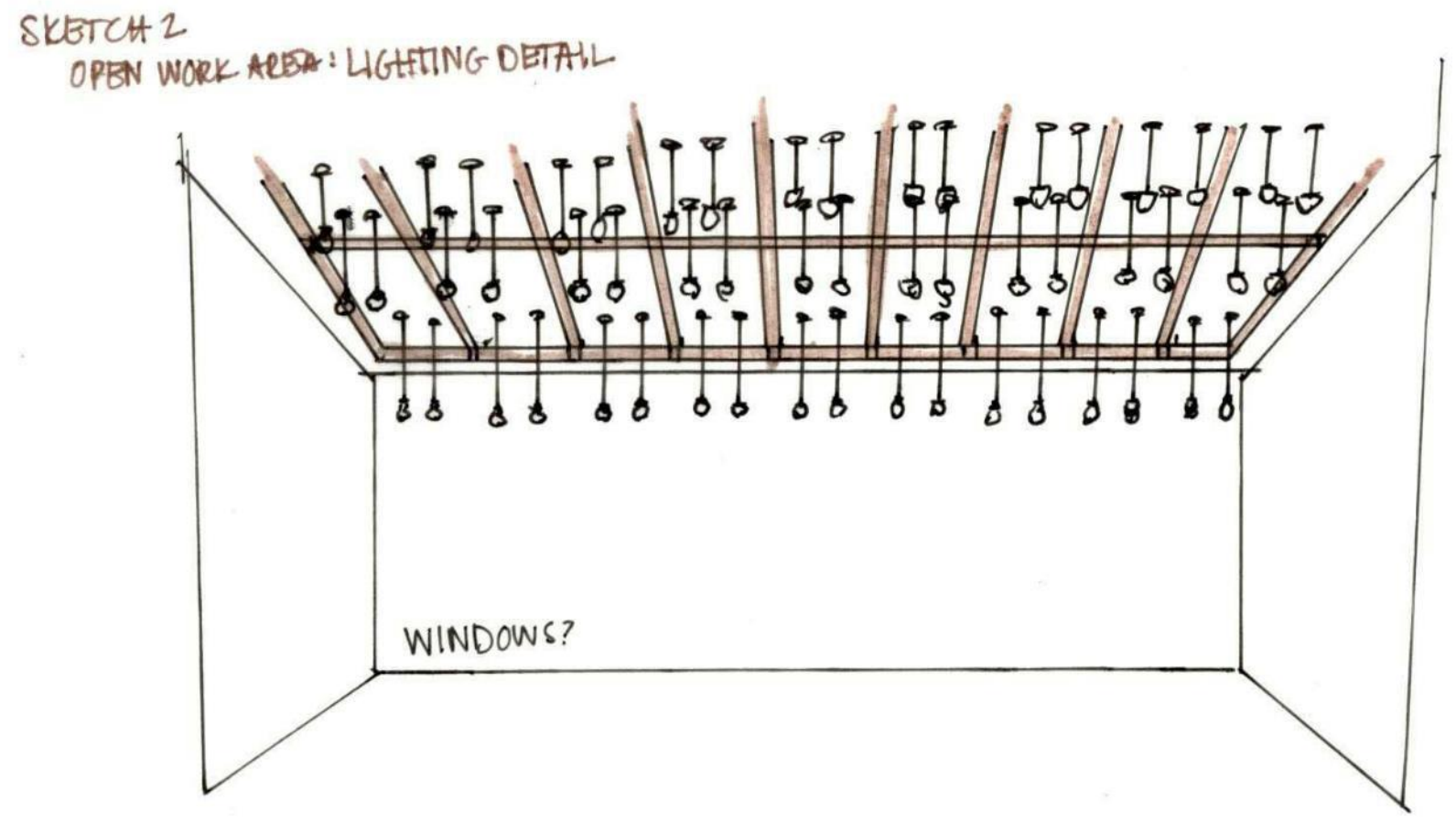
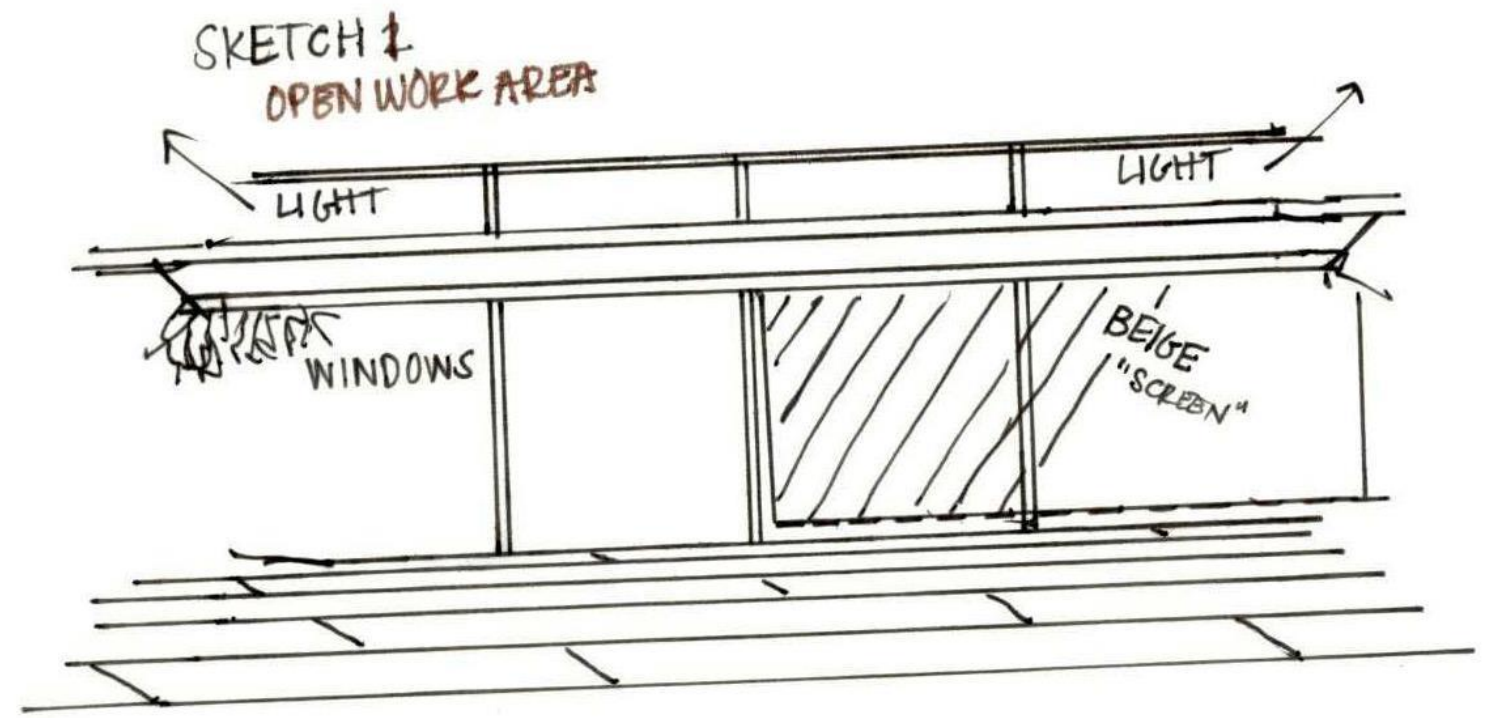
SKETCH # 4
LOUNGE SKETCH
↳ EXTENDED FROM SKETCH 1



SKETCH # 5 : STANDING WORKSTATIONS
LOUNGE SKETCH

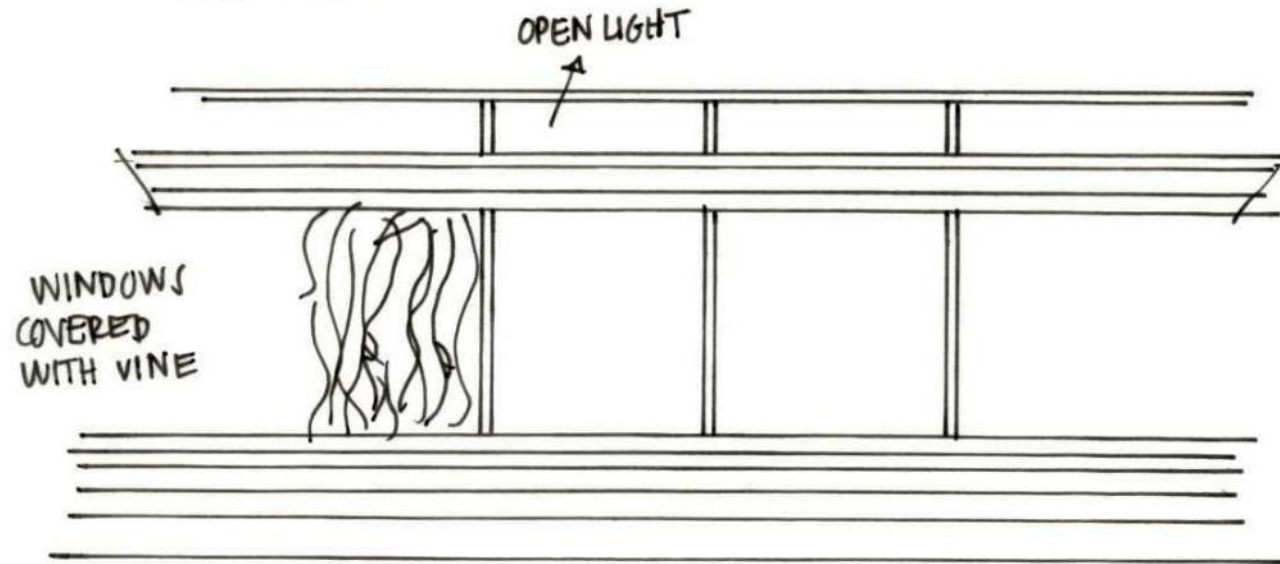


Assignment 8 – Rachel DiGiovanni
Lounge Sketches

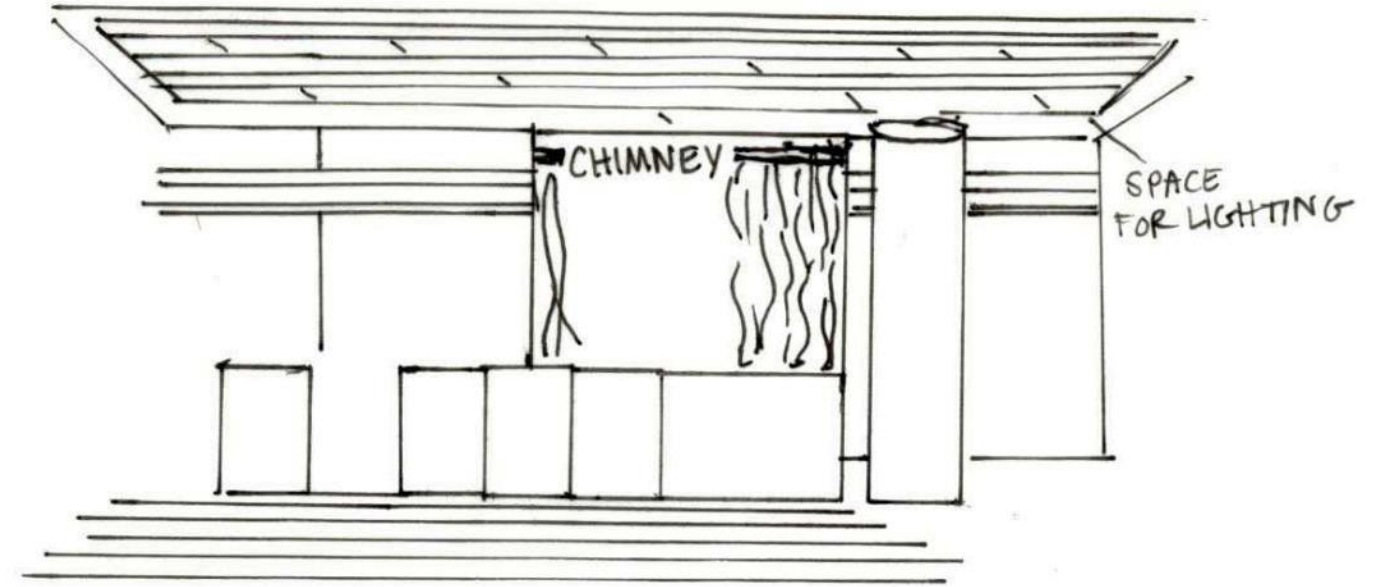


Assignment 8 – Rachel DiGiovanni
Open Work Area Sketches

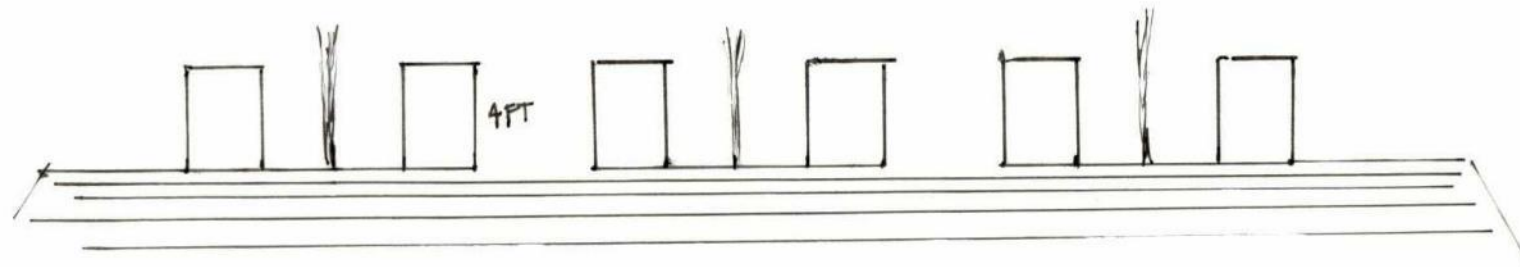
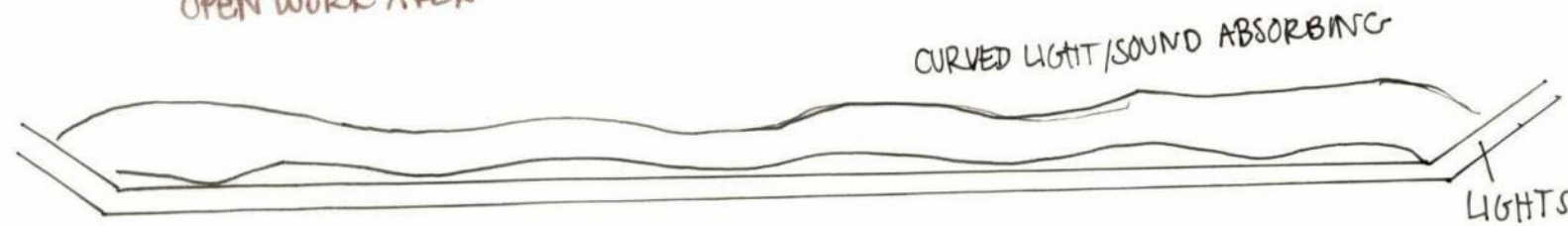
SKETCH 3
OPEN WORK AREA



SKETCH 4
OPEN WORK AREA

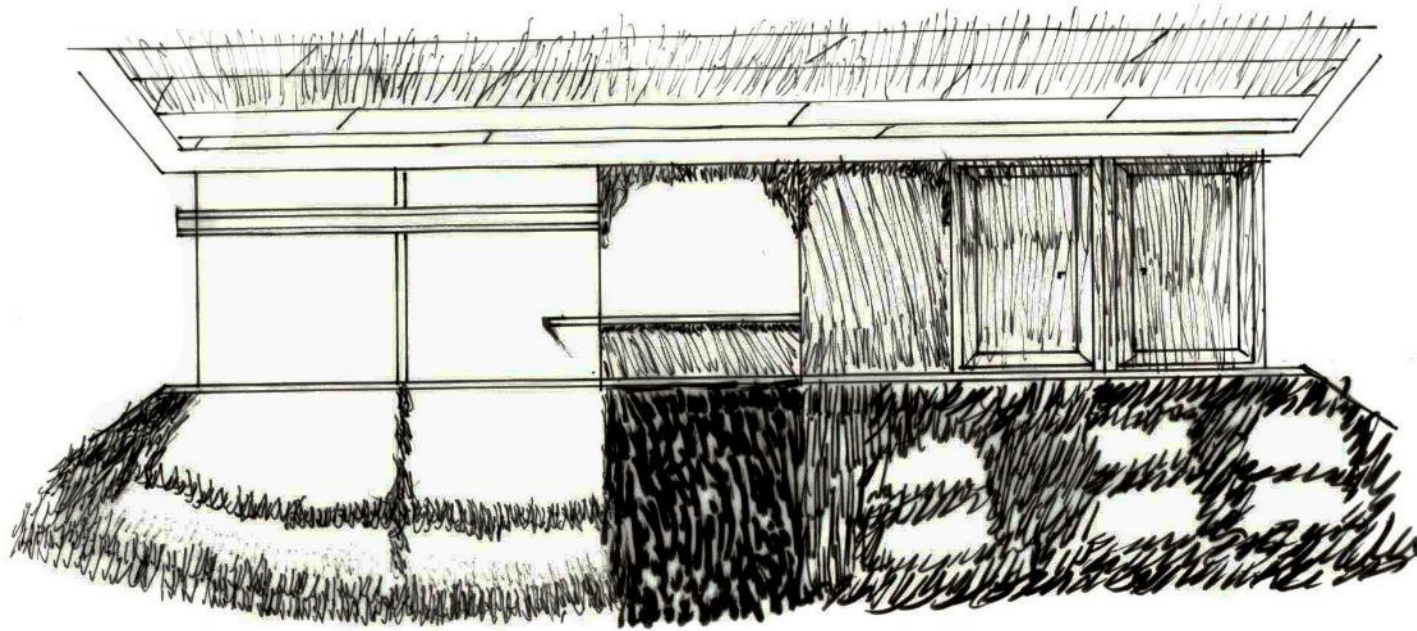


SKETCH 5
OPEN WORK AREA

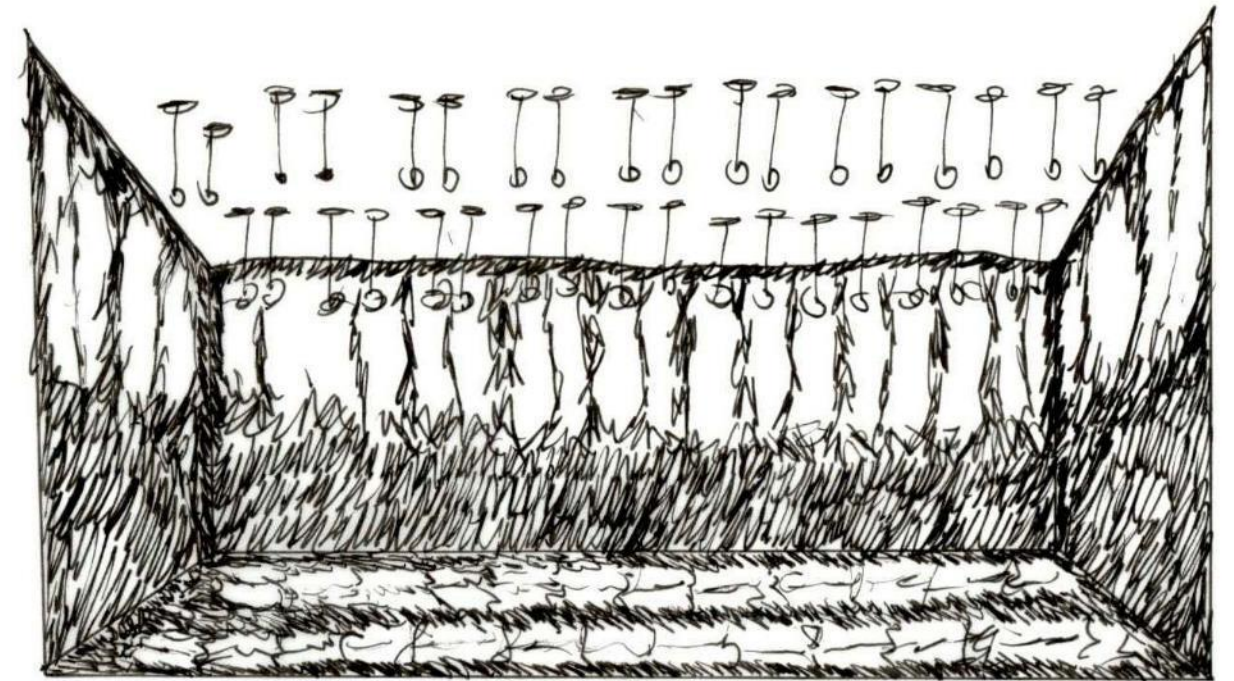


Assignment 8 – Rachel DiGiovanni
Open Work Area Sketches

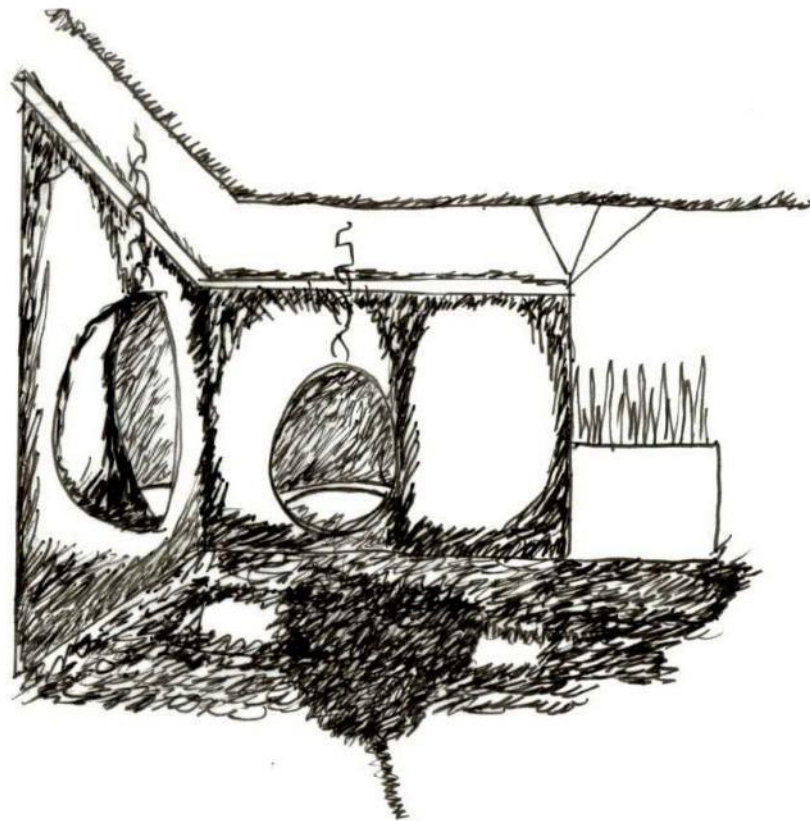
#1
LIGHTING OVERLAY



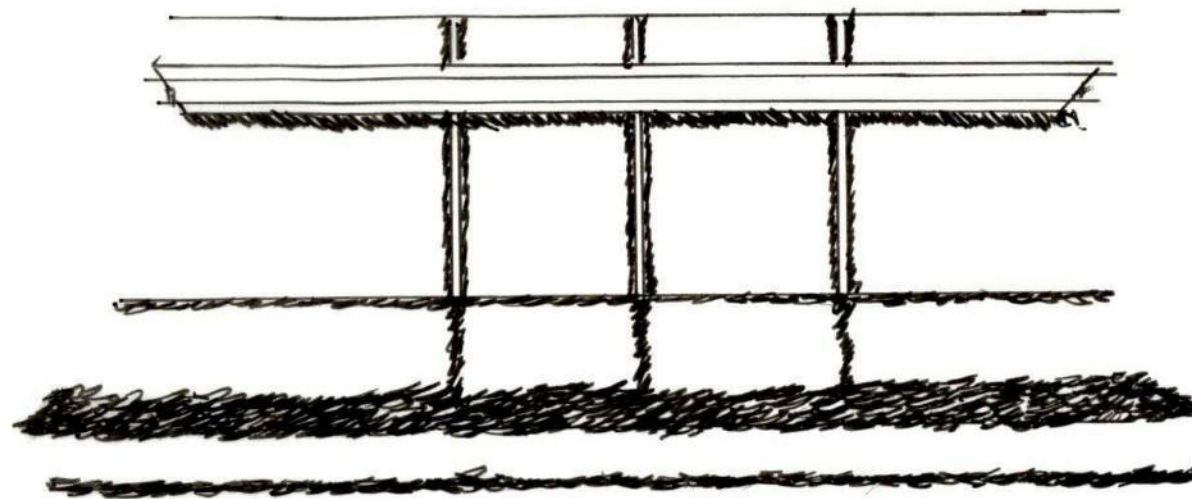
#3
LIGHTING
OVERLAY



#2
LIGHTING
OVERLAY

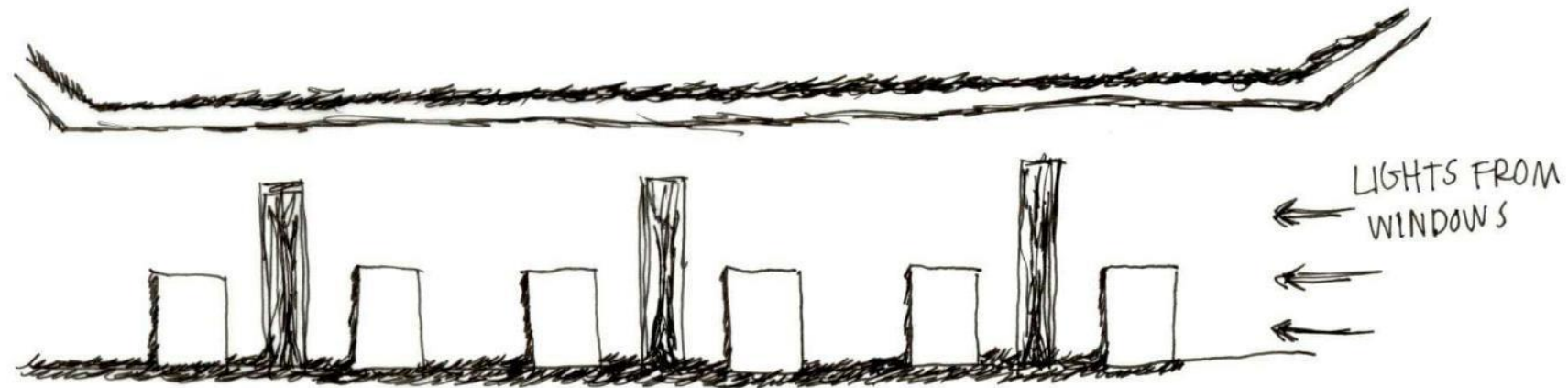


Assignment 9 – Rachel DiGiovanni
Lighting Overlay

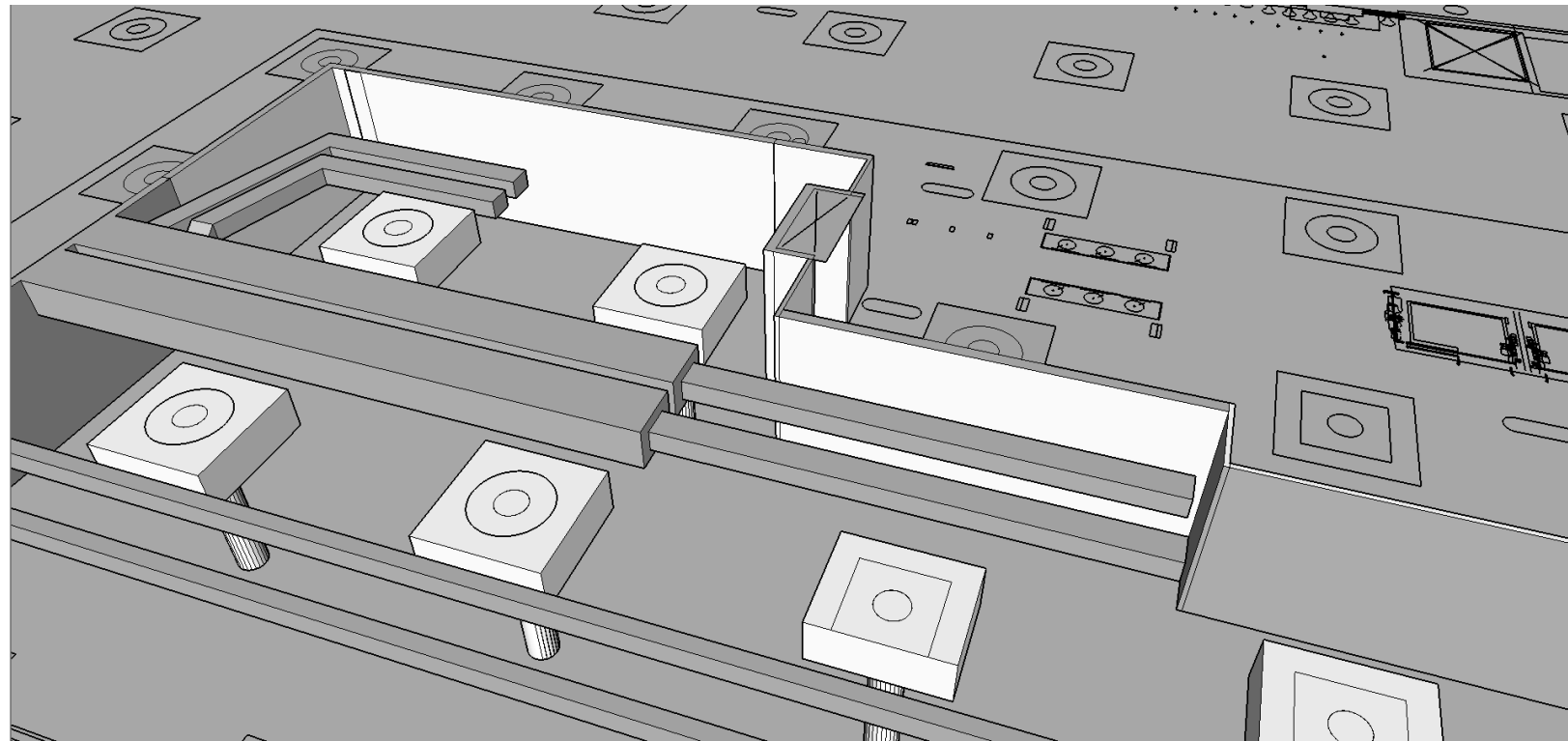
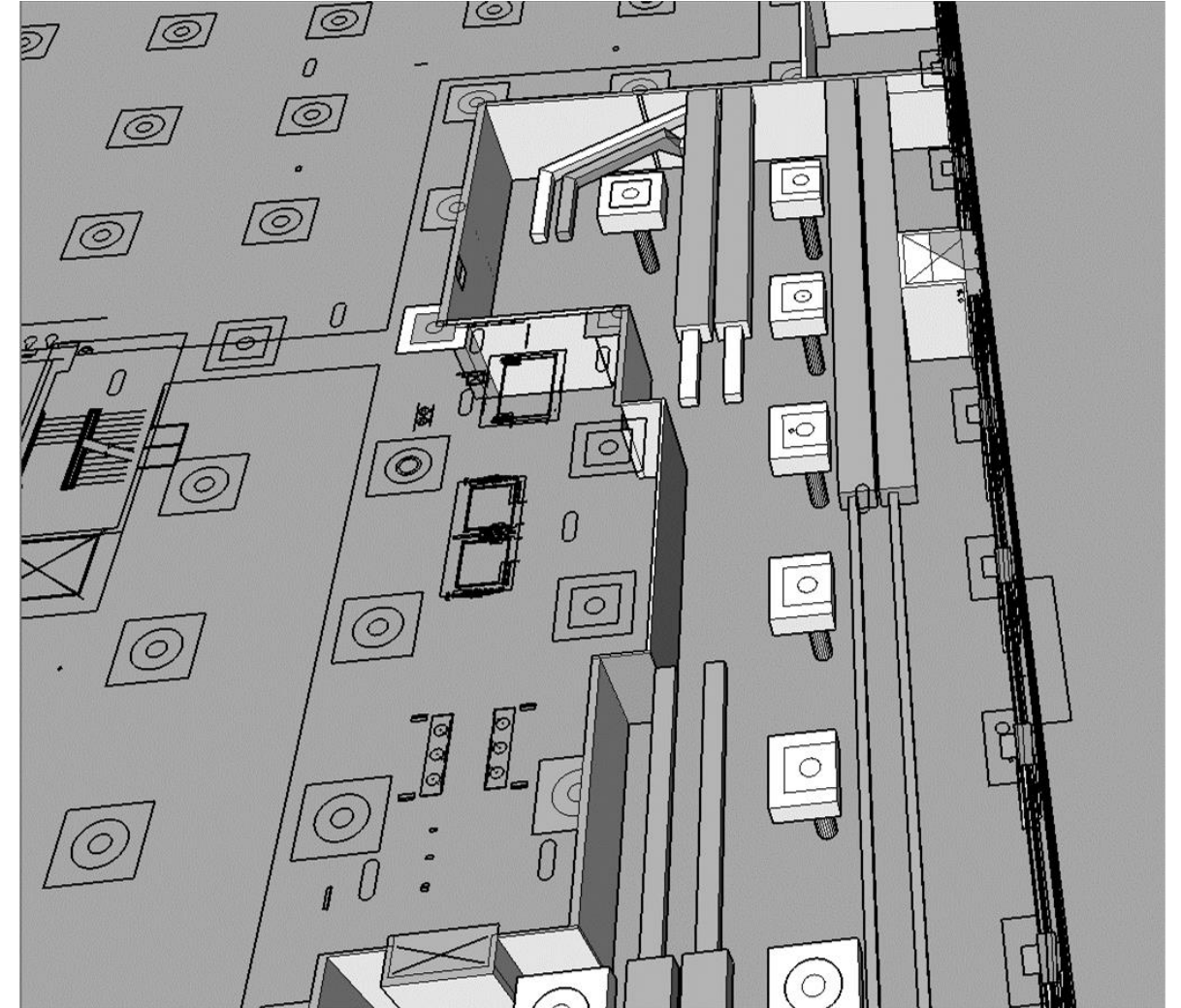
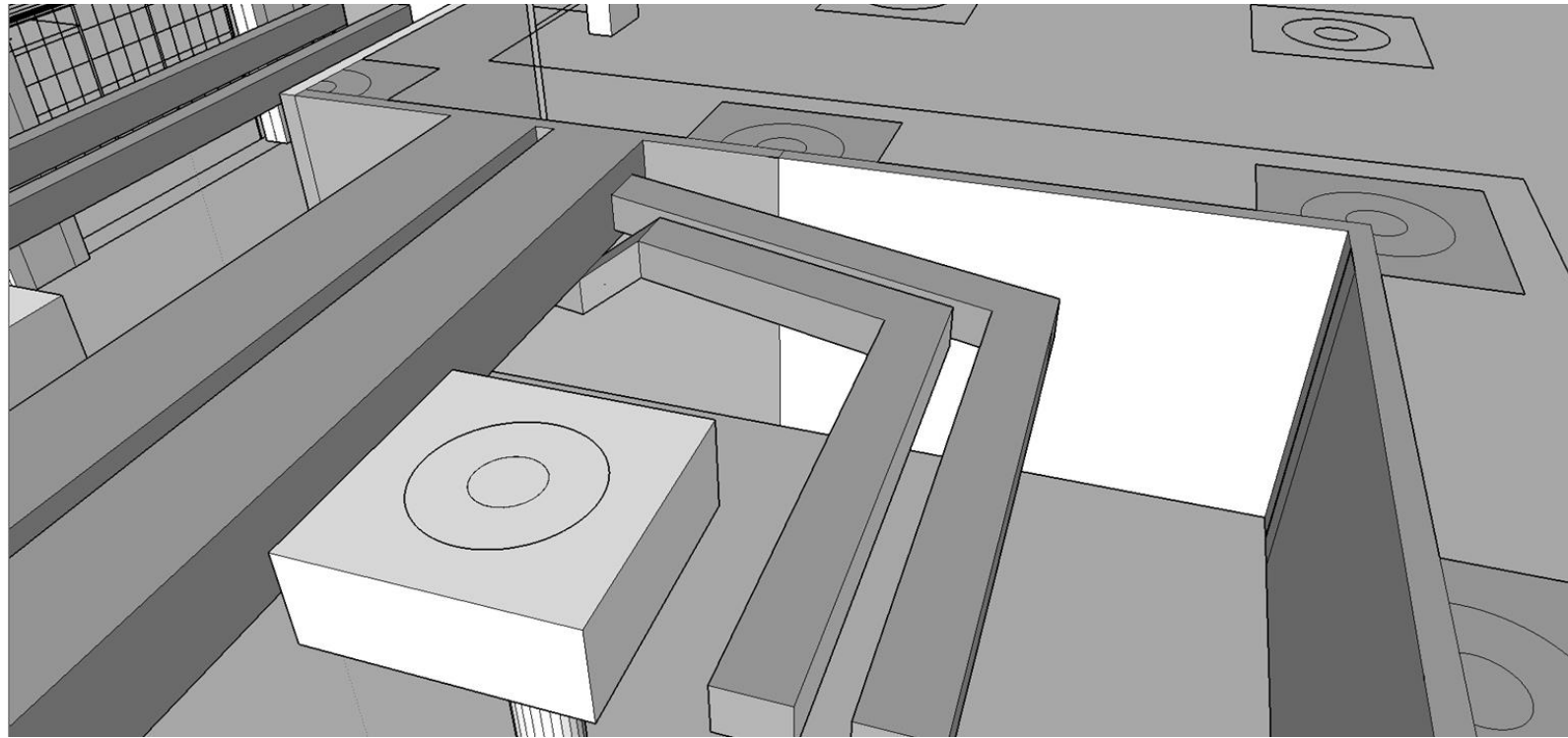


#4
LIGHTING
OVERLAY

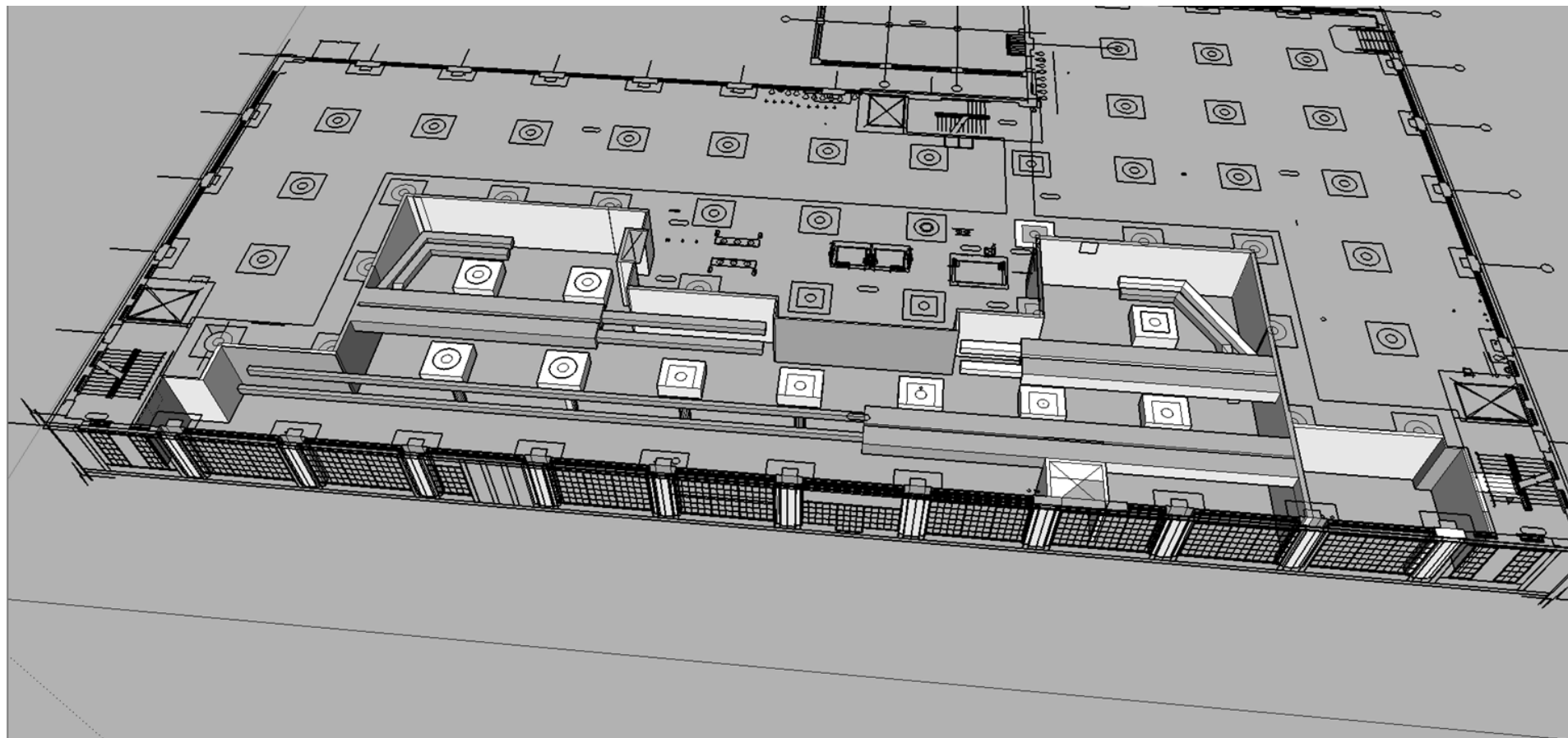
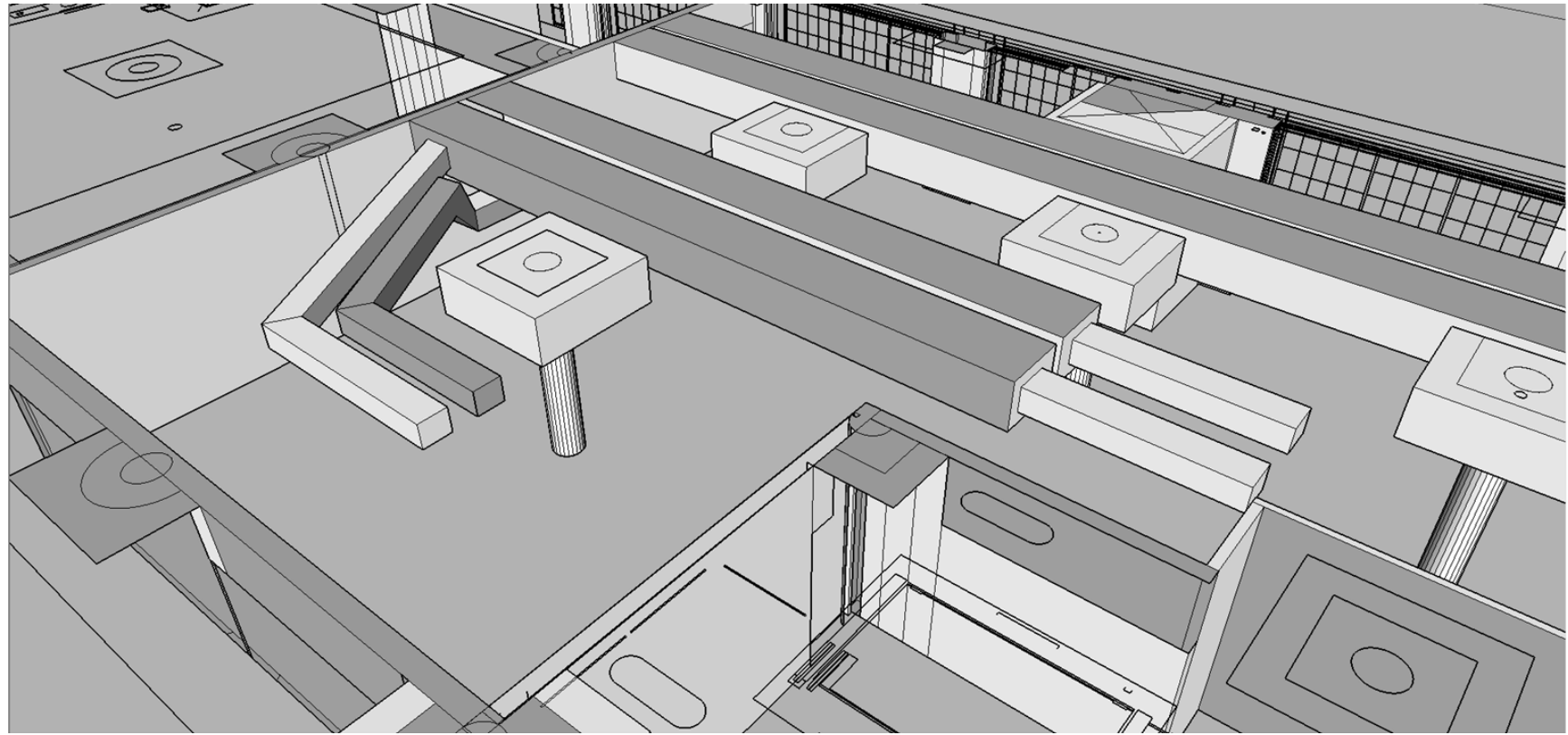
#5
LIGHTING
OVERLAY



Assignment 9 – Rachel DiGiovanni
Lighting Overlay



Assignment 9 – Rachel DiGiovanni
Systems RCP



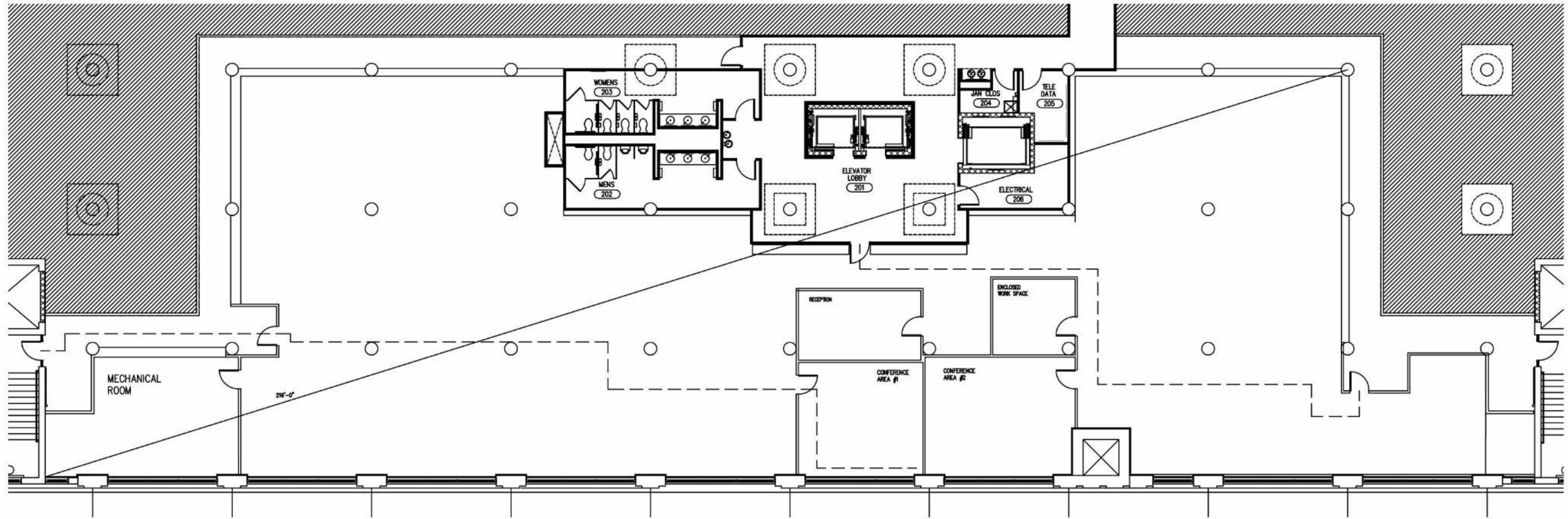
Assignment 9 – Rachel DiGiovanni
Systems RCP



Assignment 10 – Rachel DiGiovanni

Lighting Model

North



Assignment 11 – Rachel DiGiovanni

AutoCAD Life Safety Plan

Building Construction and Occupancy									
Construction Type	Sprinklers?	Occupancy Type							
Type I	Yes	B							
Exit Requirements: Number and Arrangement of Exits									
Space Designation	# of Exits		Travel Distance		Arrangement: Means of Egress				
	Required	Shown on Plans	Allowable Distance	Actual Distance Shown on Plans	Req'd Distance Between Exits		Actual Distance Shown on Plans		
Suite 3200	2	3	300 ft	110'-0" ft	108'-0" ft		216'-0" ft		
Notes:									
Use Group or Space Designation	(A)	(B)	Calculated Occupant Load = A/B	©		Exit Width (Inches)			
	Area = Sq. Ft.	Area per Occupant		Egress per Occupant		Required Width = (A/B)xC		Actual Width	
				Stair	Level	Stair	Level	Stair	Level
Suite 3200	10,200 ft	100 ft	102	0.3"	0.2"	31	20	3,121	2,081

Assignment 11 – Rachel DiGiovanni
AutoCAD Life Safety Plan

Lumen/Zonal Cavity Calculation for Private Work Space

$$\frac{(\text{Number of Lamps}) \times (\text{Initial Lamp Lumens}) \times \text{LLF} \times \text{CU}}{\text{Area}}$$

-Number of Lamps: $(4 \times 3) = 12$

-Initial Lamp Lumens: $3(\text{bulbs}) \times 350 = 1,050$ then, $1,050 \times 4(\text{total fixtures}) = 4,200$

-LLF: $\text{LLD} (.93) \text{ Fluorescent T8/830} \times \text{LDD} (.7) = 0.651$

-CU: $5(5.5)(12+13)$

$(12 \times 13) = 4.4 = 4$ Then after checking the chart, $\text{CU} = 29$

$(12) \times (4,200) \times (0.651) \times (29)$

$156 = \text{approx. } 6,099$

Photometric Data

CREE BR30 Series – LED Reflector Lamp

-65W equivalent flood lights deliver 650 lumens of warm 2700K or cool 5000K light at 68 lumens per watt

-Qualified and designed to last 25,000 hours while consuming at least 85% less energy

-Delivered Light Output: 650 lumens

Input Power: 9.5 Watts (65W eq)

CRI: 80

CCT: 2700K, 5000K

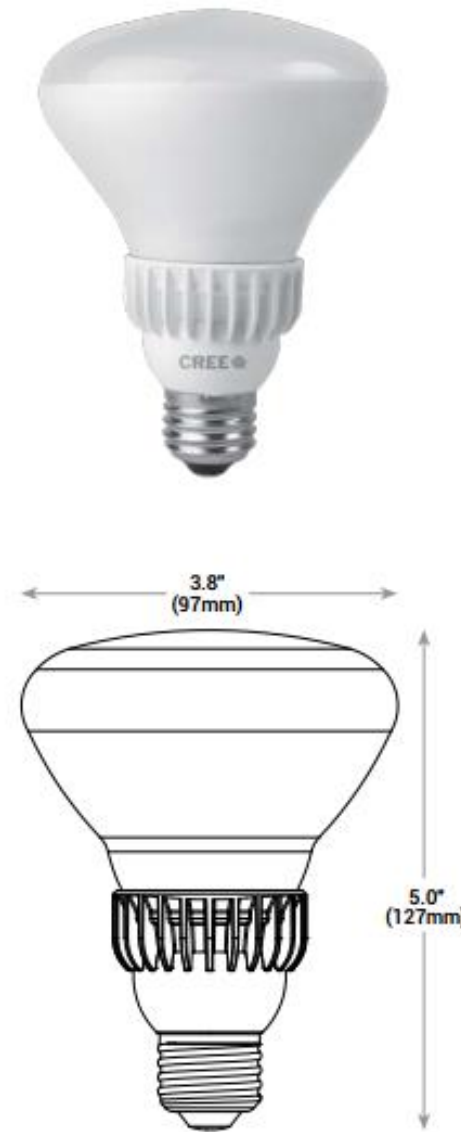
Physical Dimensions: 3.8" (97mm) x 5.0" (127mm)

CONSTRUCTION & MATERIALS

- BR30 reflector bulb design weighs less than 6.5 ounces
- Silicon coated globe for increased safety
- Reflector bulb meets ANSI standards for BR30 dimensions

ELECTRICAL SYSTEM

- Power Factor: > 0.9 nominal
- Input Voltage: 120V
- Dimming: Dimmable to 5% with select dimmers



Assignment 11 – Rachel DiGiovanni
Lighting Analysis