

PORTFOLIO 1

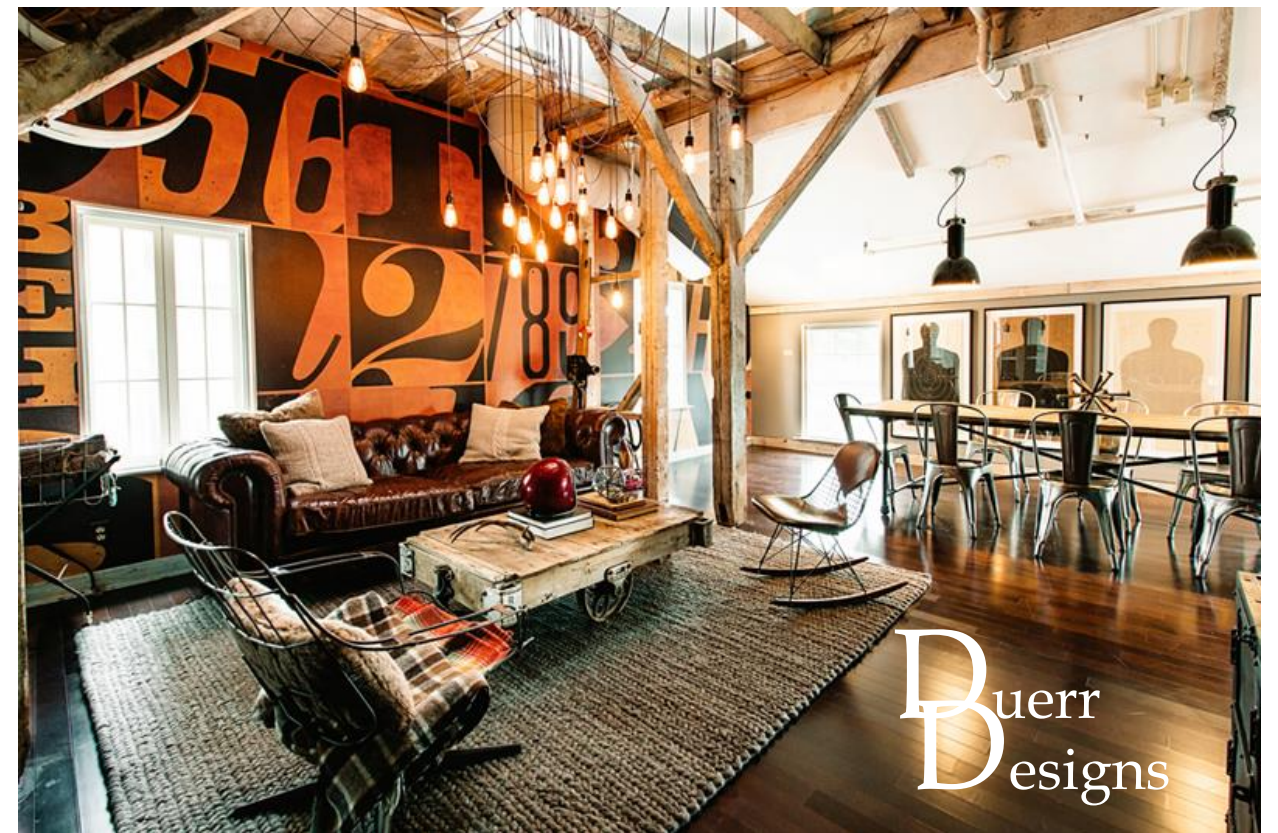
LISA DUERR

IDSN 3600

Duerr
Designs

CONCEPT

- Sustainability, calm work environment
- Co-working (bring different companies together, it can lead to more innovative ideas, liberate new talents, and create opportunity for future employees and employers)
- Public work areas geared towards people that work better in an open environment
- Private rooms will be provided so they are able to have the silence they need
- Meeting and conference rooms will also be a part of the design
- Café inspired area
- Work colors, natural materials, soft lighting, plant life



Buerr
Designs

Personnel Totals Per Department	Personnel Totals		Personnel				Support	Total	Circulation	Carpetable
	Current	Future	Sq. Feet	Computer	Printer	Fax	Sq. Feet	Sq. Feet		Sq. Feet
Executive	2	2	76	2	1	-	420	496	1.54	764
Administration	2	4	160	4	1	-	136	296	1.54	456
Account Admin	12	6	216	23	2	2	132	348	1.54	536
Creative Services	4	78	2,808	7	1	-	586	3,394	1.54	5,227
Support	-	-	-	-	-	-	2,083	2,083	1.54	3,208
Totals:	20	90	3,260	36	5	2	3,357			10,190

Position	Personnel Totals		Unit Square Ft.		Extended Sq. Feet	Equipment			Notes
	Current	Future	Office	Workstation		PC	Printer	Fax	
					0				
					0				
					0				
					0				
					0				
Director	1	1	40		40	1			Locate near Reception
					0				
					0				
Administrative Assistant	1	1		36	36	1	1		Locate directly outside Mgr office
					0				
					0				
					0				
					0				
Personnel Totals:	2	2			76	2	1	0	

Department Summary Information:	
Personnel	76 Square Ft.
Equipment	420 Square Ft.
Sub Total:	496 Square Ft.
Circulation	1.54
Total Carpetable:	763.84 Square Ft.

Interviewee:
 Interview Date:
 Revision Submitted:
 Sign Off:

SUPPORT/EQUIPMENT SPACES

Space	Support/Equipment		Unit Square Feet	Extended Sq. Feet	Location	Notes
	Current	Future				
				0		
Waiting Area	1	1	120	120	Visible from Admin Asst	Seating for 4 guests
Pantry	0	1	100	100	Admin Assts	
Fax/Copy	0	1	100	100	Near Admin Assts	
Storage	1	1	64	64		Shelving
File Drawers	20	12	3	36		3-Hi cabinets
Executive Conference Room	1	0	300	0	Adjacent to Waiting Area	Full AV
				0		
				0		
Support Totals:				420		

Department Notes:
 Entire company is progressive
 Space is attractive

PERSONNEL

Position	Personnel Totals		Unit Square Ft.		Extended Sq. Feet	Equipment			Notes
	Current	Future	Office	Workstation		PC	Printer	Fax	
Finance					0				
Manager	0	2		40	80	1			
Clerical	2	2		40	80	3	1		
					0				
					0				
					0				
					0				
					0				
					0				
					0				
					0				
Personnel Totals:	2	4			160	4	1	0	

Department Summary Information:		
Personnel	160	Square Ft.
Equipment	136	Square Ft.
Sub Total:	296	Square Ft.
Circulation	1.54	
Total Carpetable:	455.8	Square Ft.

Interviewee:
 Interview Date:
 Revision Submitted:
 Sign Off:

SUPPORT/EQUIPMENT SPACES

Space	Support/Equipment		Unit Square Feet	Extended Sq. Feet	Location	Notes
	Current	Future				
Finance				0		
File Drawers	10	10	10	100	Lockable room	5-Hi cabinets
Equipment	1	1	36	36	Next to work area	3 Printers, shredder, work counter
				0		
				0		
				0		
				0		
				0		
				0		
				0		
				0		
Support Totals:				136		

Department Notes:


PERSONNEL

Position	Personnel Totals		Unit Square Ft.		Extended Sq. Feet	Equipment			Notes
	Current	Future	Office	Workstation		PC	Printer	Fax	
					0				
Account Executive	4	2	36		72	9			
					0				
Account Manager	4	2	36		72	12			
					0				
Administrative Assistant	1	2		36	72	2	2	2	Shared by entire Production staff
					0				
Account Assistant	3	0		36	0	0			
					0				
					0				
					0				
					0				
					0				
					0				
Personnel Totals:	12	6			216	23	2	2	

Department Summary Information:		
Personnel	216	Square Ft.
Equipment	132	Square Ft.
Sub Total:	348	Square Ft.
Circulation	1.54	
Total Carpetable:	535.92	Square Ft.

Interviewee:
 Interview Date:
 Revision Submitted:
 Sign Off:

SUPPORT/EQUIPMENT SPACES

Space	Support/Equipment		Unit Square Feet	Extended Sq. Feet	Location	Notes
	Current	Future				
				0		
File Drawers	10	10	3	30	Near Admin Assts	3-Hi cabinets
				0		
Equipment	1	1	36	36	Near Admin Assts	Copier, work counter
				0		
Digital Storage	0	1	30	30		Shelving; can be spread throughout
				0		
Storage	0	1	36	36		Lockable room; shelving
				0		
				0		
				0		
				0		
				0		
Support Totals:				132		

Department Notes:

PERSONNEL								Department Summary	
Position	Personnel Totals		Unit Square Ft.		Extended Sq. Feet	Equipment			Notes
	Current	Future	Office	Workstation		PC	Printer	Fax	
Team Manager	1	4	36		144	2	1		
Team Assistant	3	74		36	2664	1			
					0	2			
					0	2			
					0				
					0				
					0				
					0				
					0				
					0				
					0				
					0				
Personnel Totals:	4	78			2808	7	1	0	

Department Summary Information:	
Personnel	2808 Square Ft.
Equipment	586 Square Ft.
Sub Total:	3394 Square Ft.
Circulation	1.54
Total Carpetable:	5227 Square Ft.

Interviewee:
 Interview Date:
 Revision Submitted:
 Sign Off:

SUPPORT/EQUIPMENT SPACES						Department Notes:	
Space	Support/Equipment		Unit Square Feet	Extended Sq. Feet	Location	Notes	
	Current	Future					
				0			
				0			
				0			
Concept Lounge	0	1	200	200			
Work Area	0	1	350	350	Adjacent to Teams	Work counters	
Storage	0	1	36	36	Next to Work Area	Shelving	
				0			
				0			
				0			
				0			
				0			
Support Totals:				586			

PERSONNEL

Position	Support/Equipment		Unit Square Ft.	Extended Sq. Feet	Location	Notes
	Current	Future				
				0		
				0		
				0		
				0		
				0		
				0		
				0		
				0		
				0		
				0		
				0		
				0		
				0		
				0		
				0		
				0		
				0		
				0		
Personnel Totals:	0	0		0		

Department Summary Information:	
Personnel	0 Square Ft.
Equipment	2083 Square Ft.
Sub Total:	2083 Square Ft.
Circulation	1.54
Total Carpetable:	3207.8 Square Ft.

Interviewee:
 Interview Date:
 Revision Submitted:
 Sign Off:

SUPPORT/EQUIPMENT SPACES

Space	Support/Equipment		Unit Square Feet	Extended Sq. Feet	Location	Notes
	Current	Future				
				0		
Reception	1	1	300	300	Direct access to Broadcast, Executive, Mktg	Waiting for 6, TV's
				0		
Conference Room	1	3	300	900	Shared by all areas	Full AV
				0		
Computer Service Area	0	0	300	0		Work counter, outlets
Computer Server Room	1	1	300	300	Near Account Admin	Raised floor, secure, 3 racks
Copy/Fax Station	1	2	36	50	Spread throughout	Work counter
Pantry	1	2	36	72	Spread throughout	Coffee, sink, refrigerator, cabinets
Lunch Room	0	1	400	400		Full kitchen, seating
				0		
Coats	40	25	1	25	Spread throughout	
Mechanical Room	0	1	36	36	Near Base Building air supply	Supplemental Air
				0		
Support Totals:				2083		

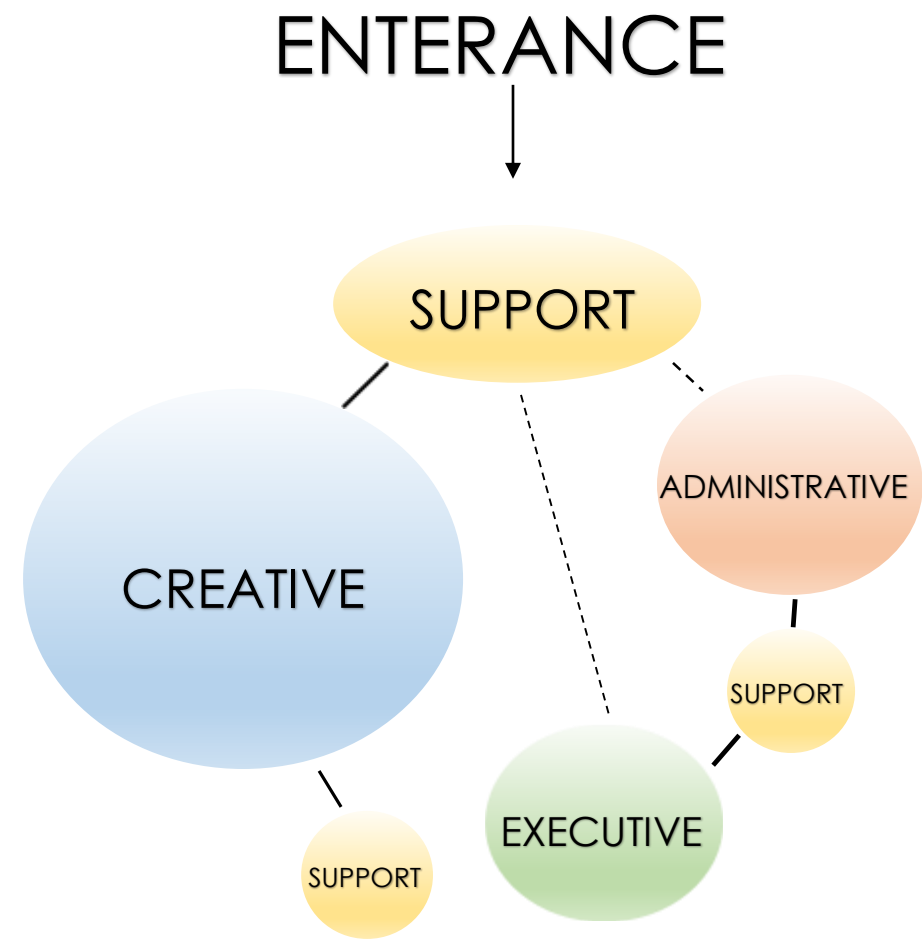
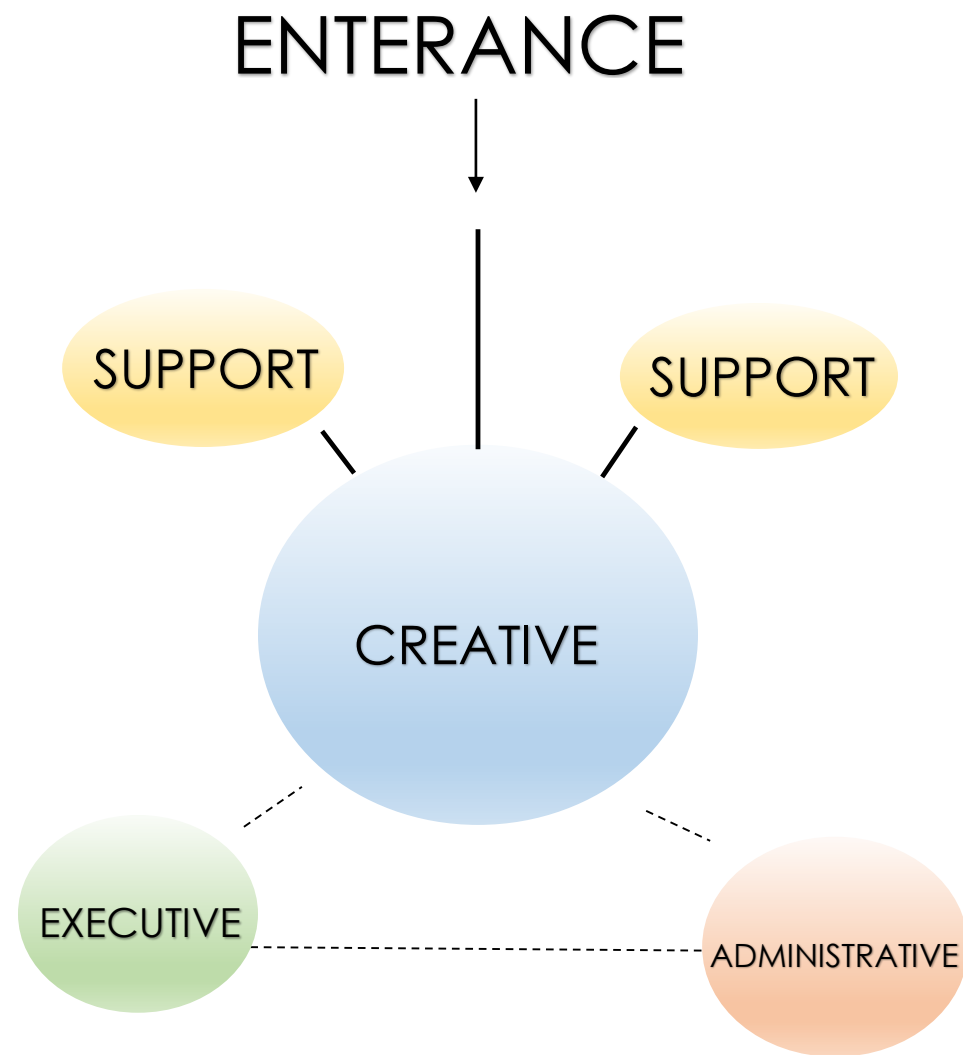
Department Notes:

PORTFOLIO 2

LISA DUERR

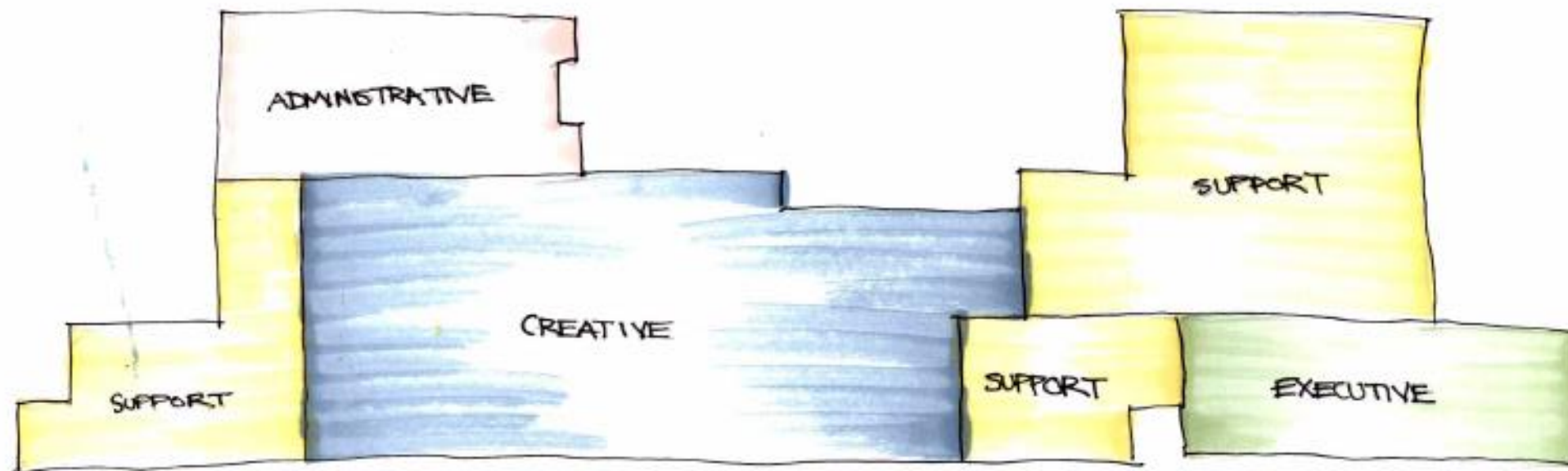
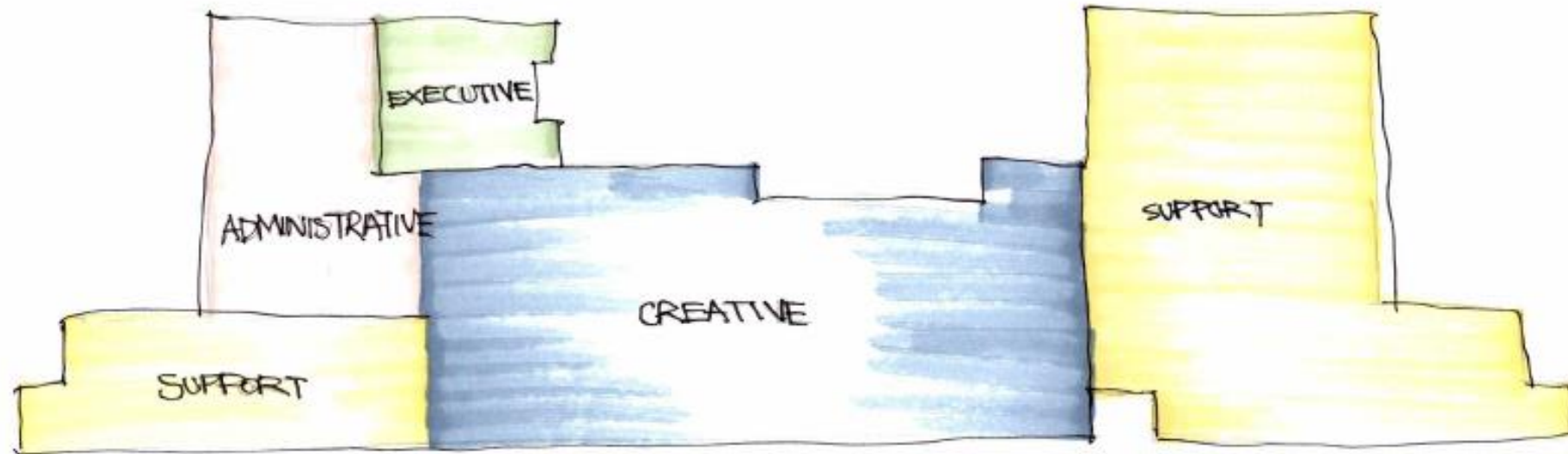
IDSN 3600

BUBBLE DIAGRAM

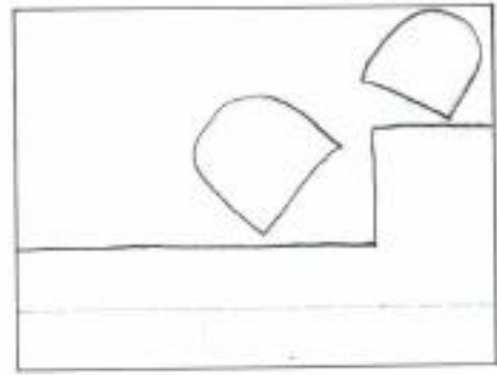


— STRONG
- - - WEAK

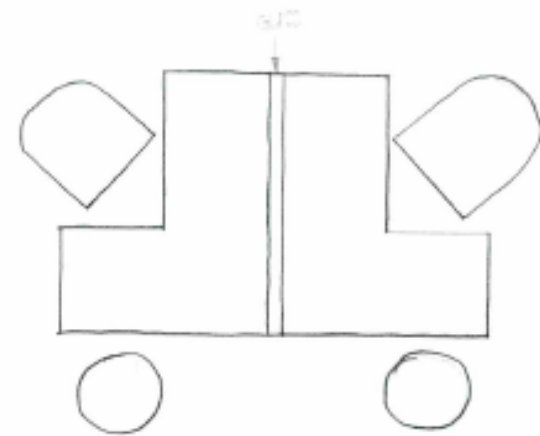
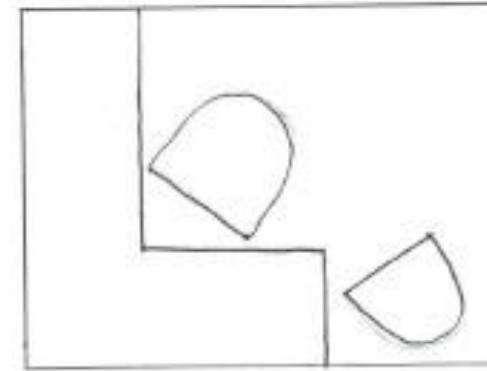
BLOCKING DIAGRAM



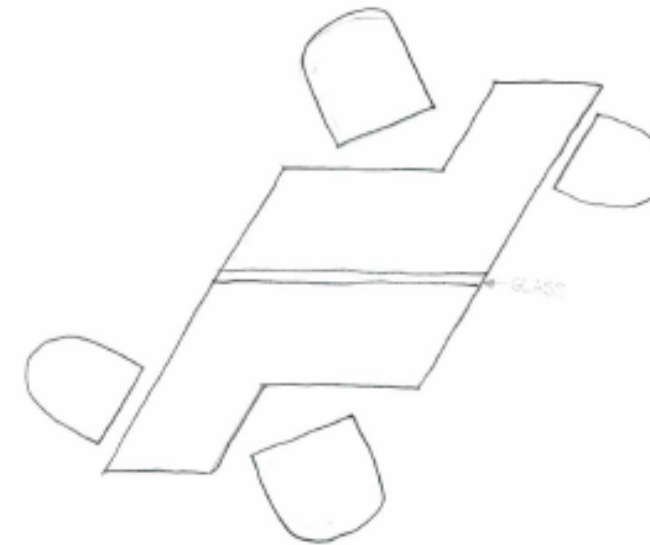
SPACE STANDARD DRAWINGS



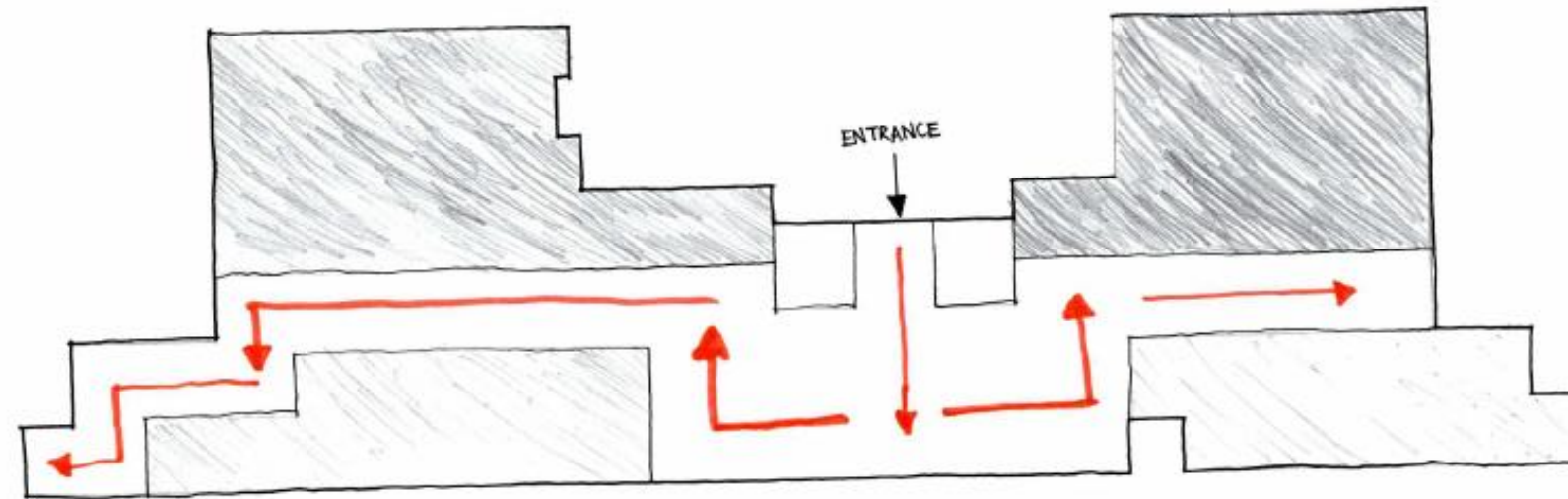
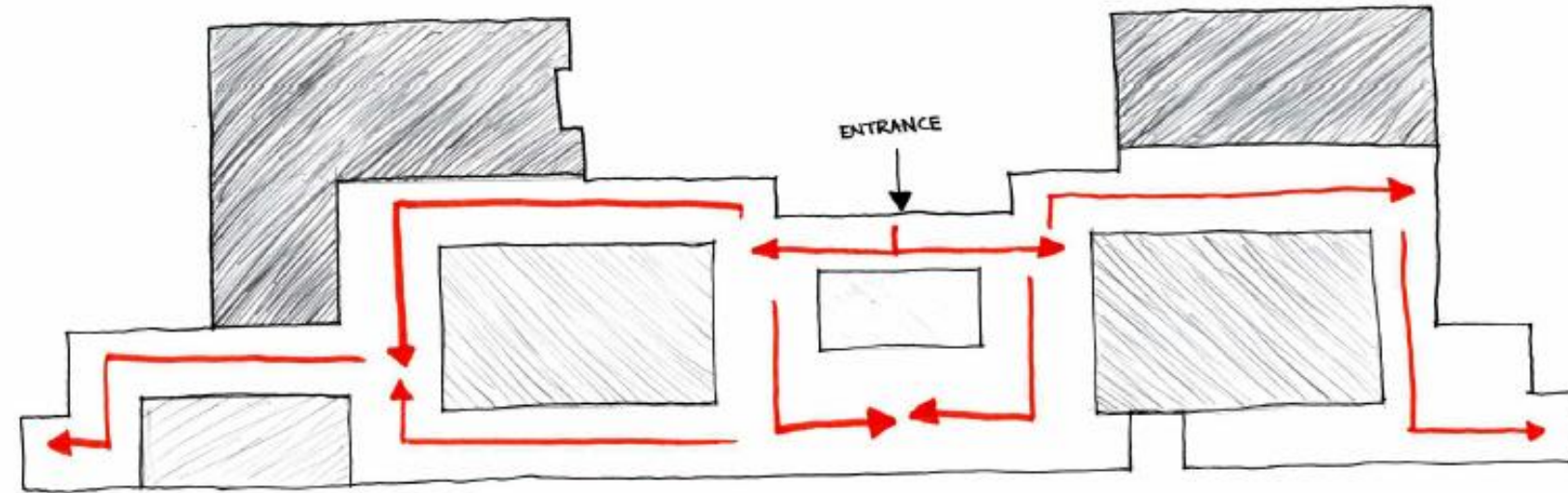
LARGE OFFICE
SPACE



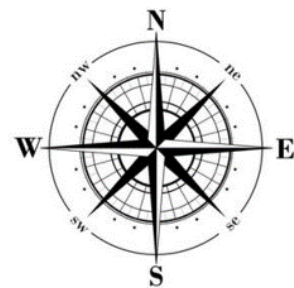
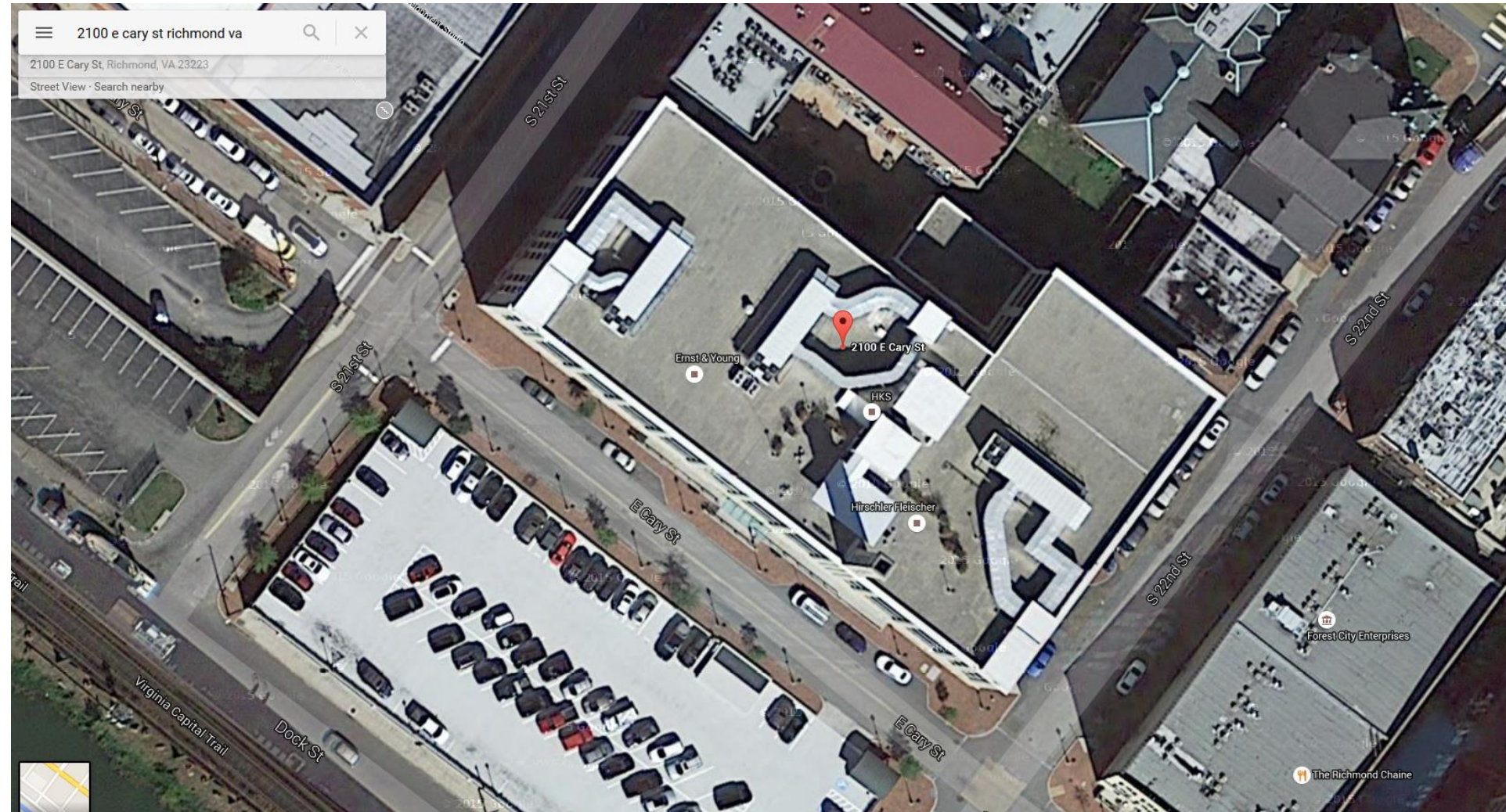
WORK SPACE



SPATIAL CONCEPT SKETCHES

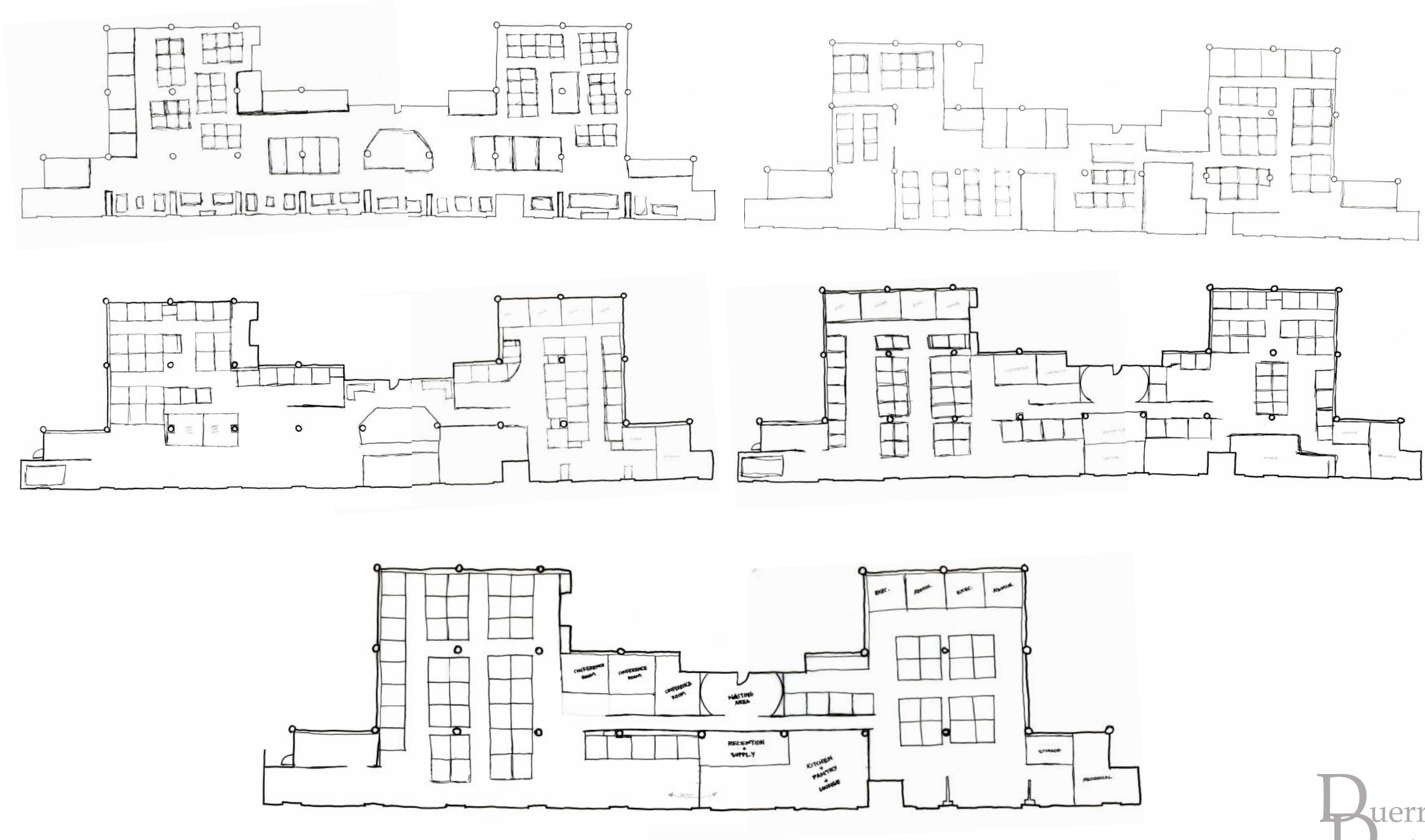


SITE PLAN

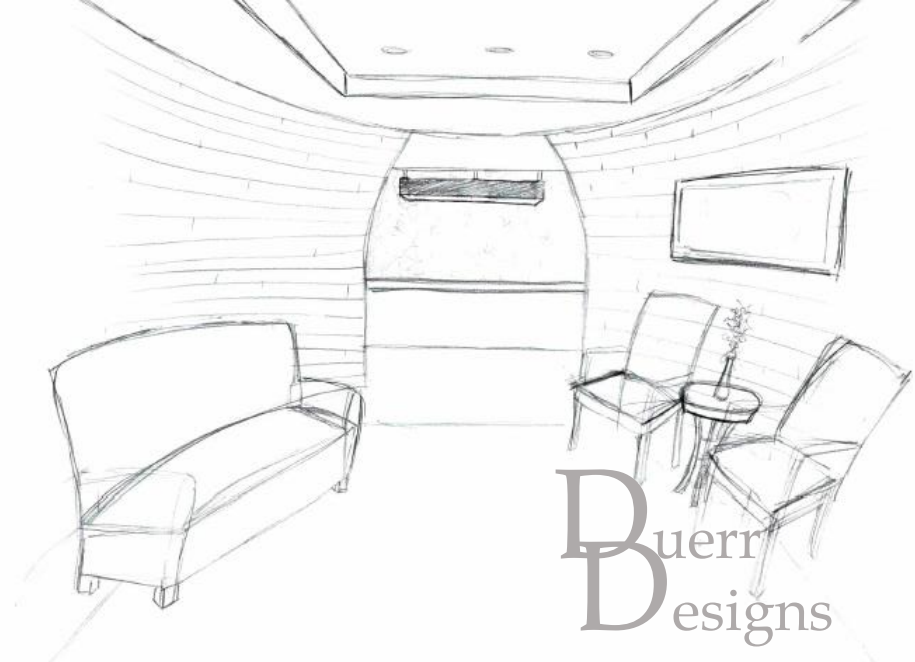
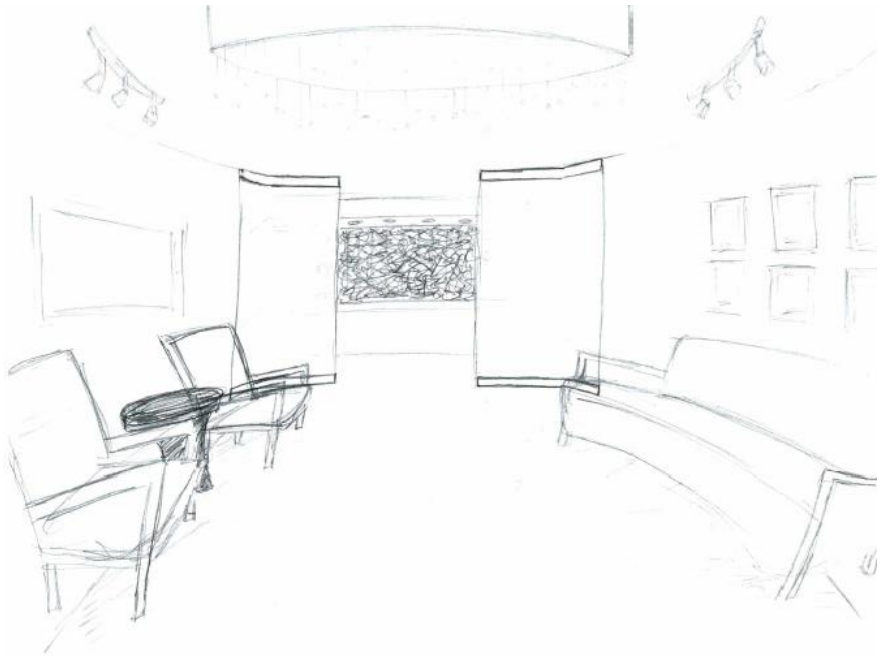
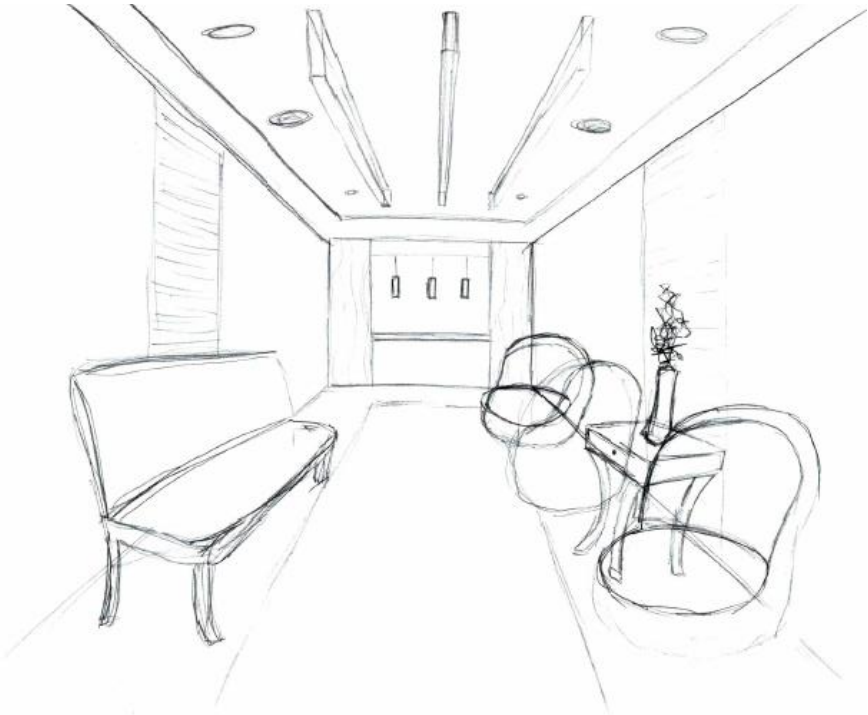
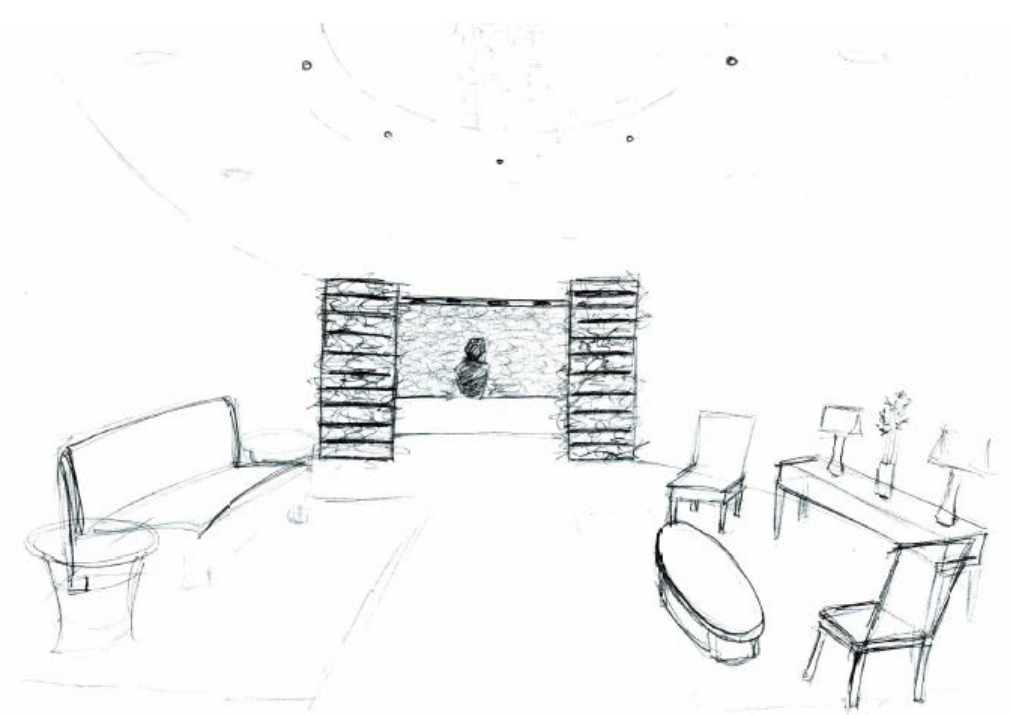


↑
SUN LIGHT

SPACE PLAN SKETCHES



ENTRY SKETCHES

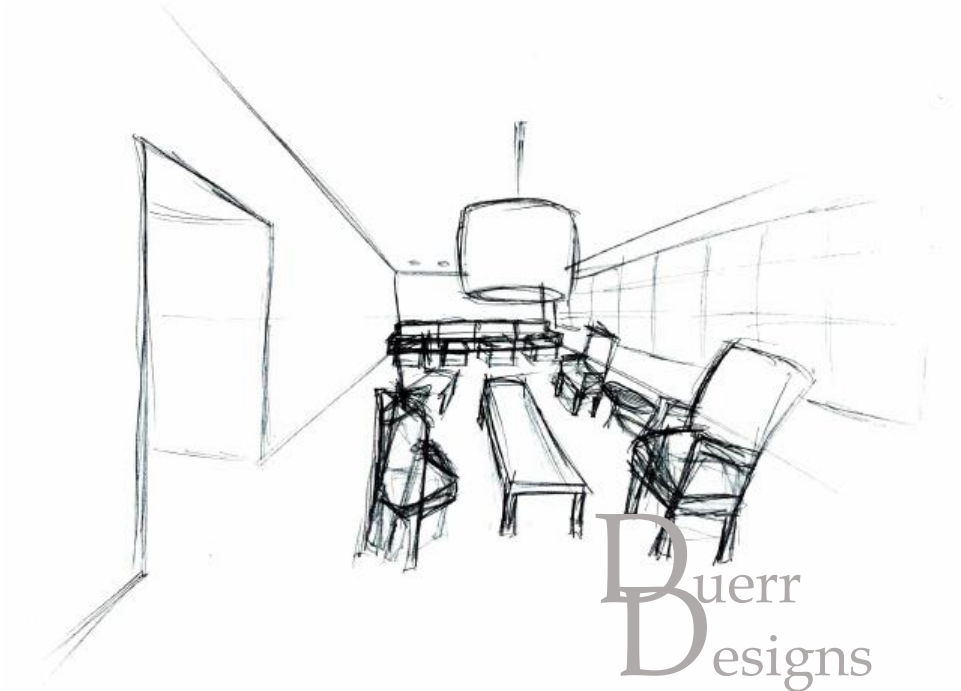
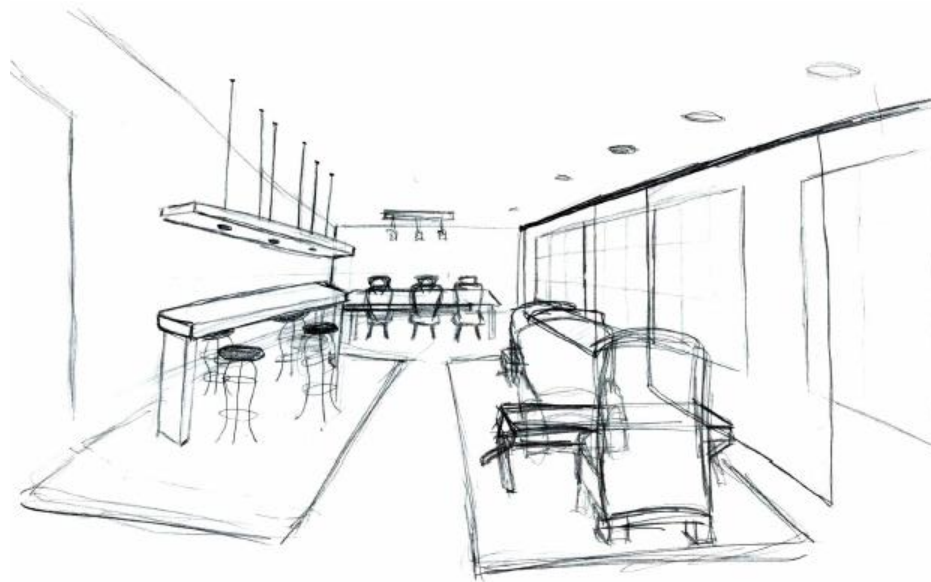


Buerr
Designs

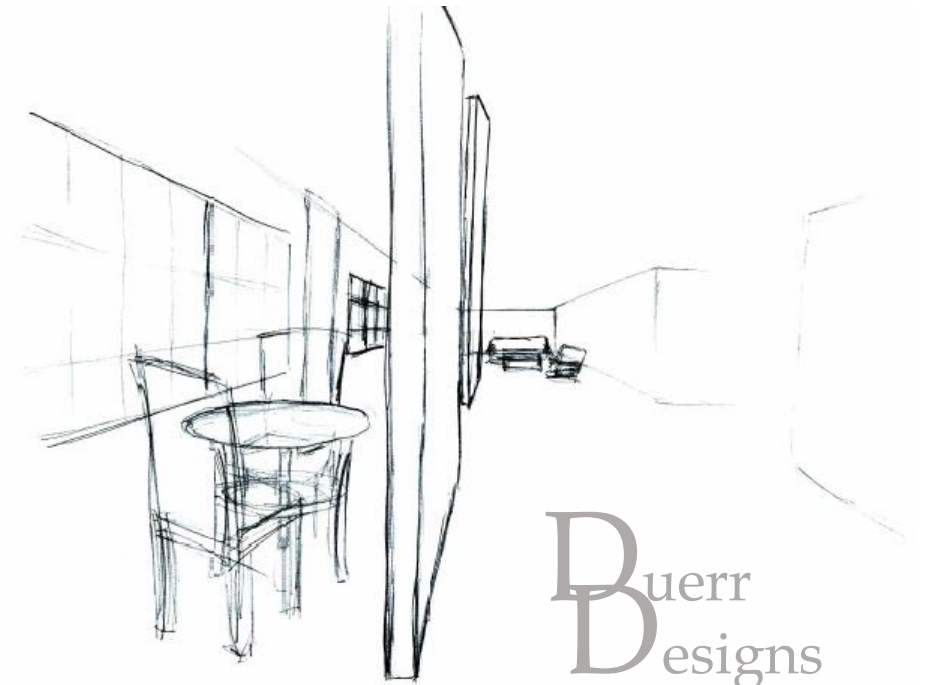
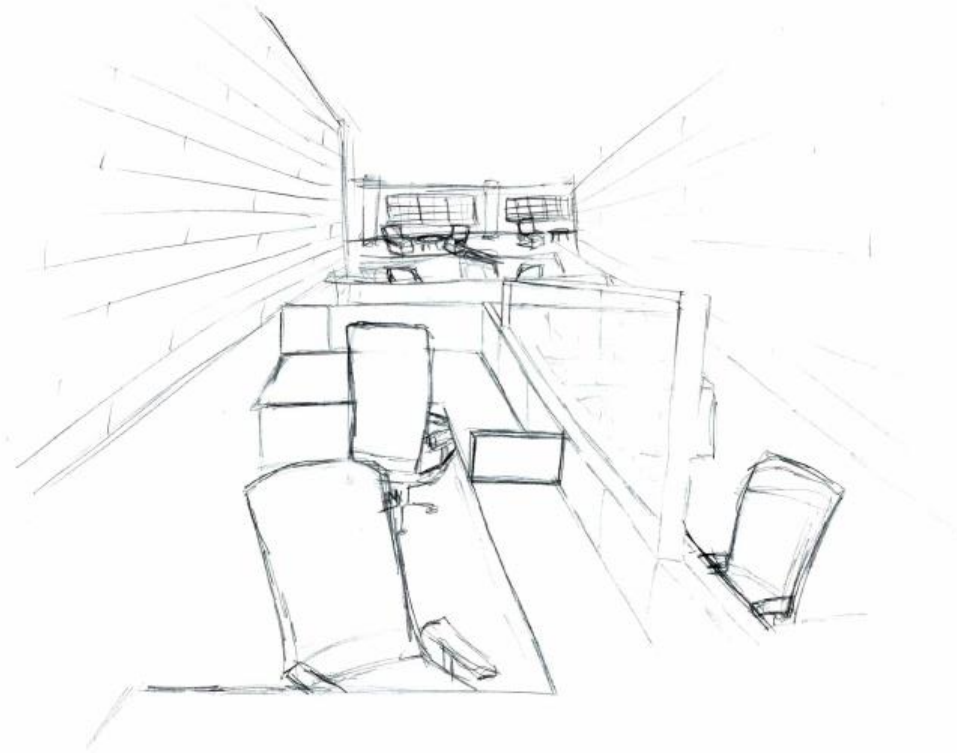
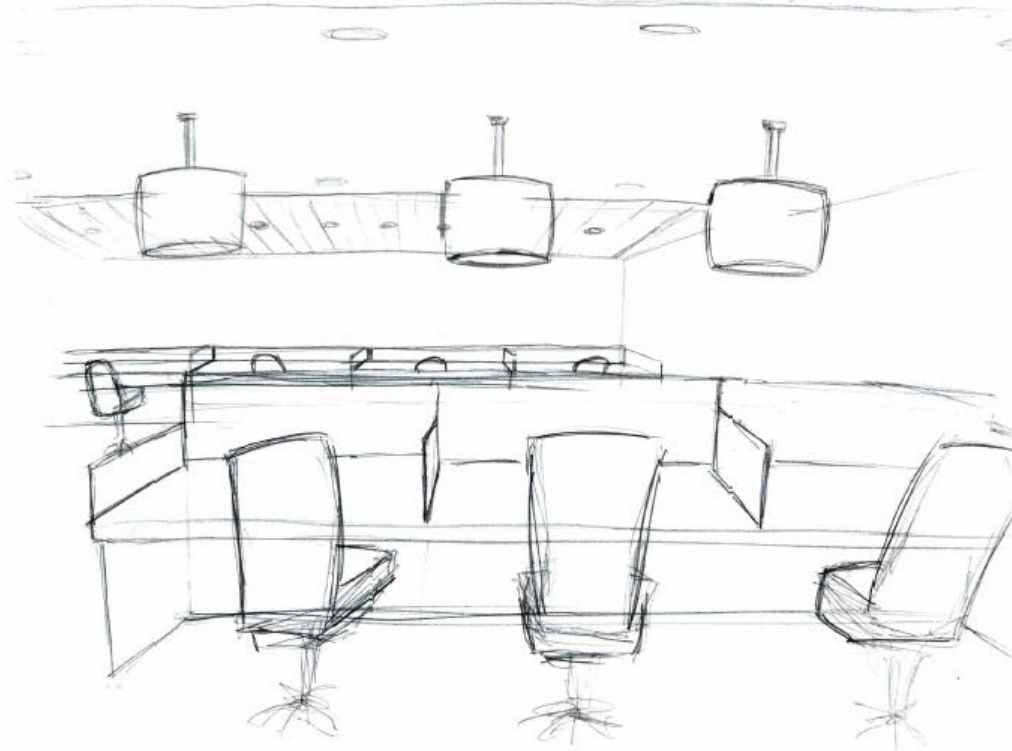
MAIN COORIDOR SKETCHES



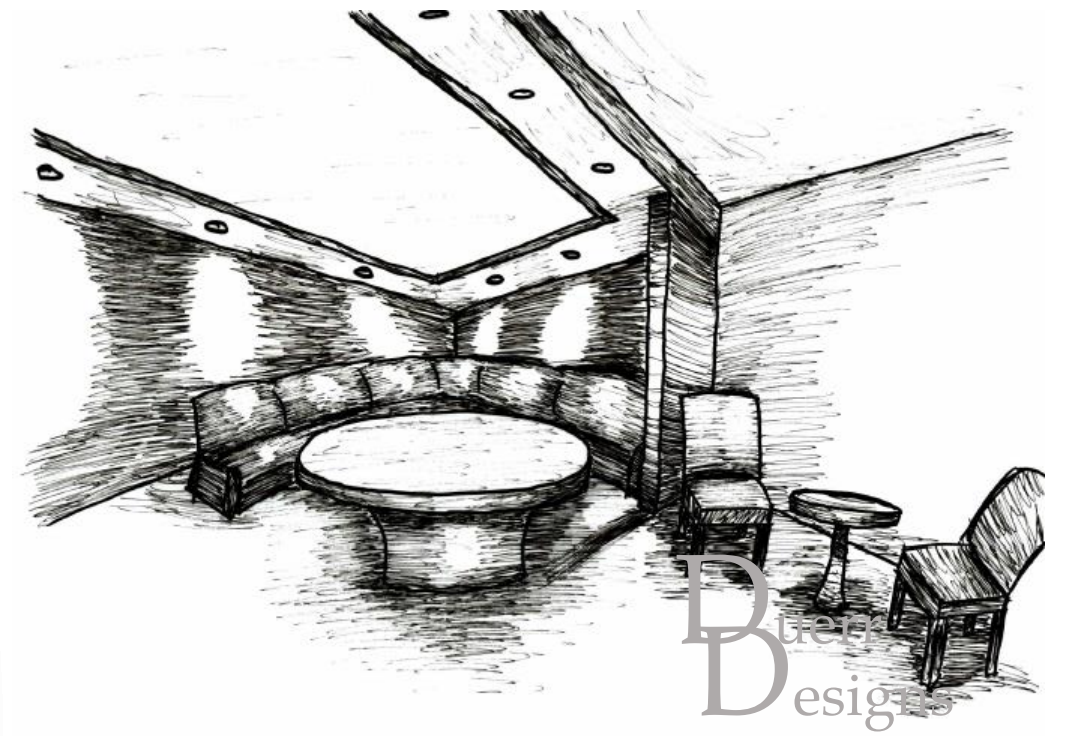
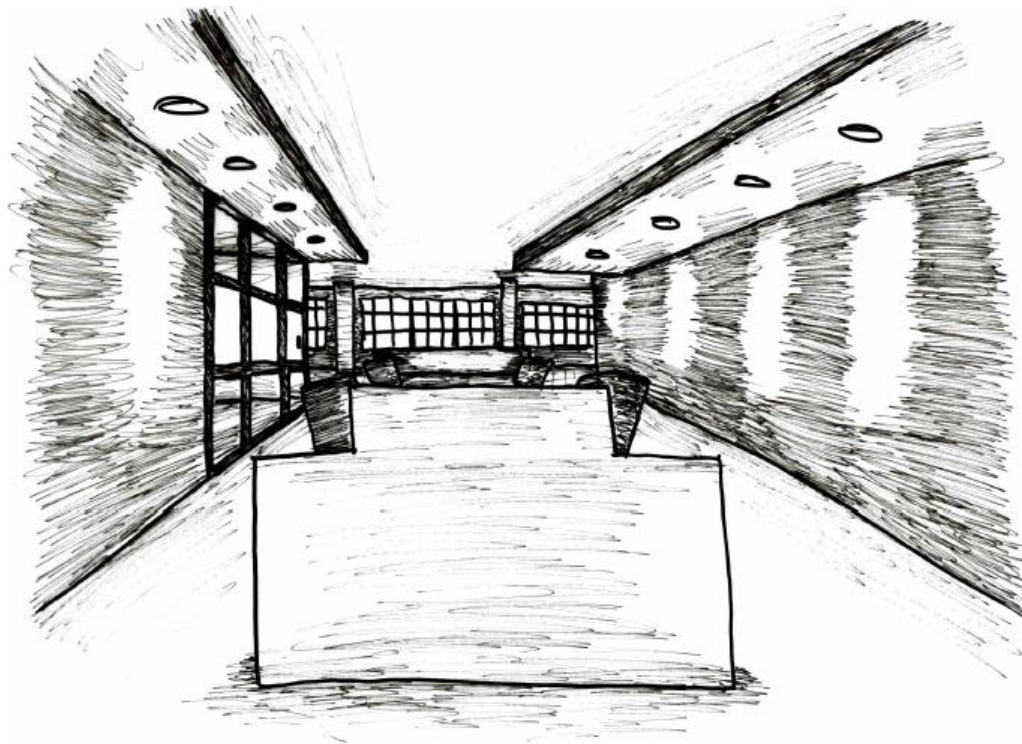
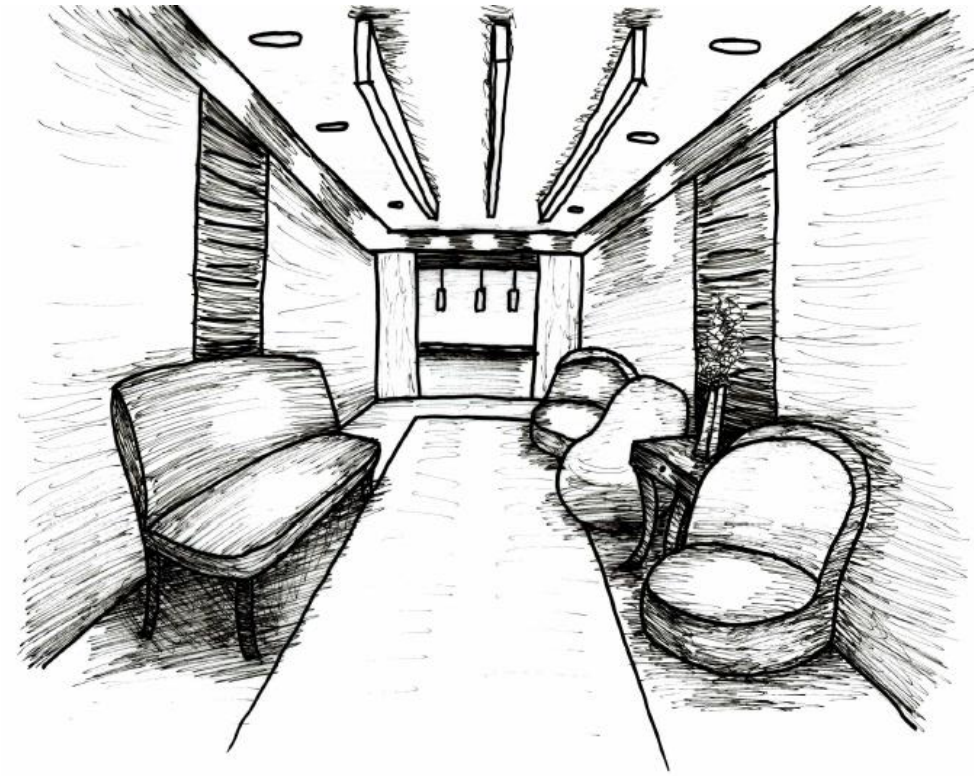
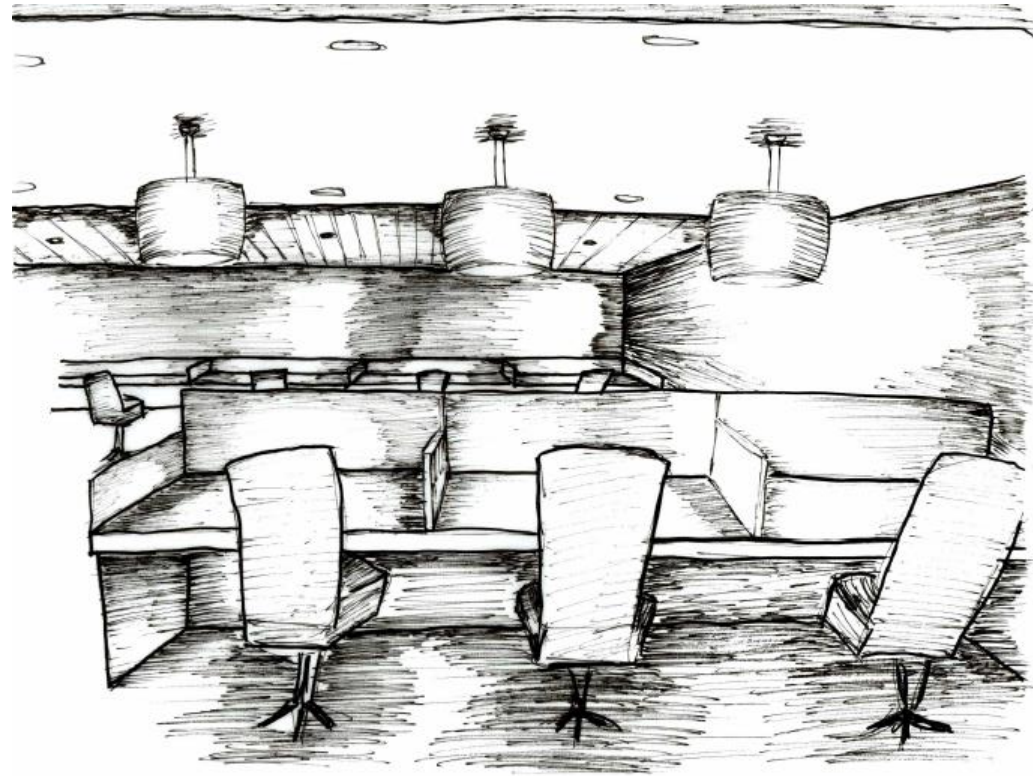
LOUNGE SKETCHES



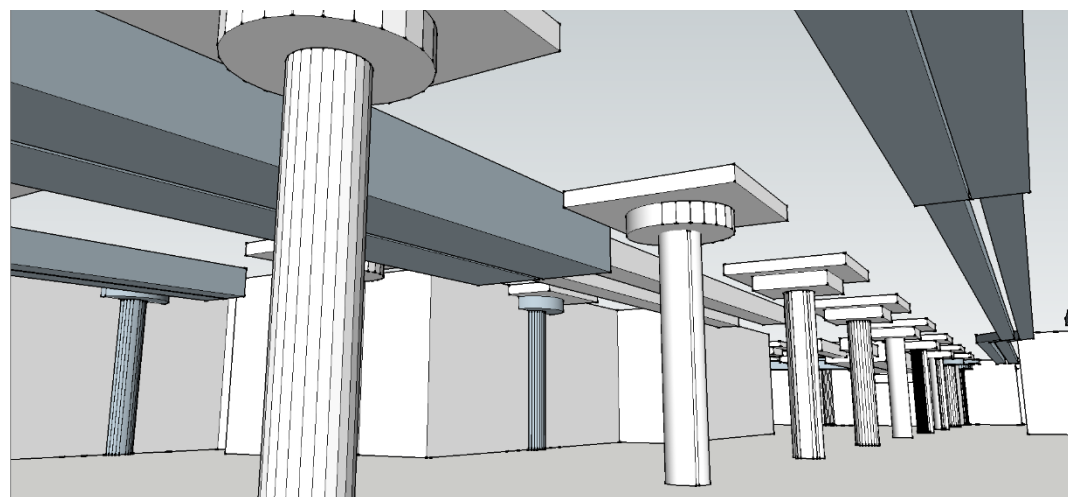
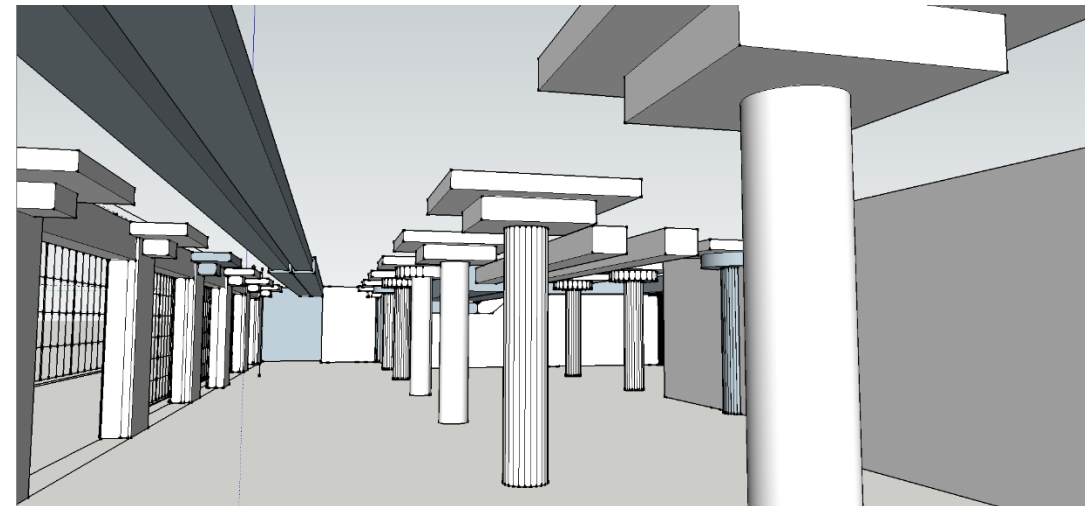
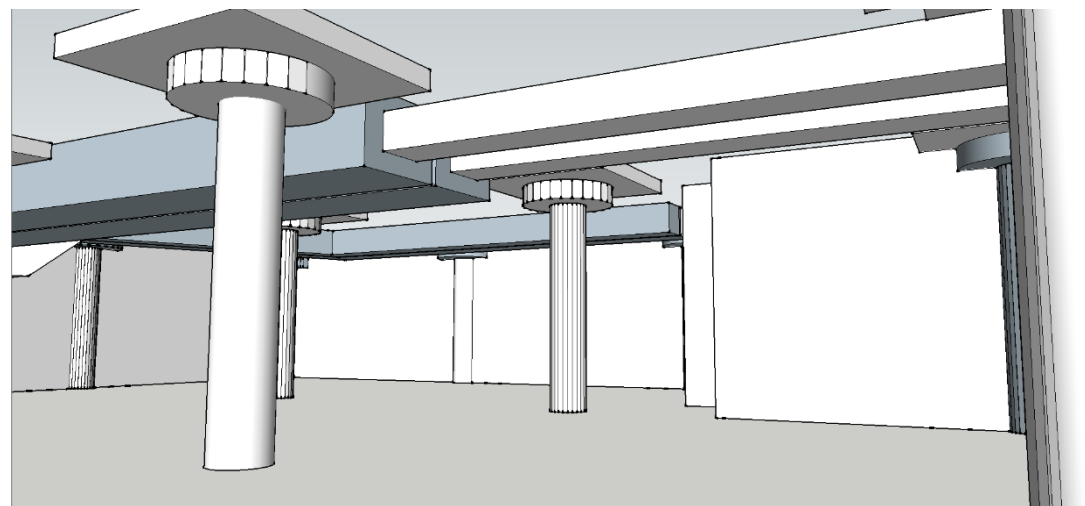
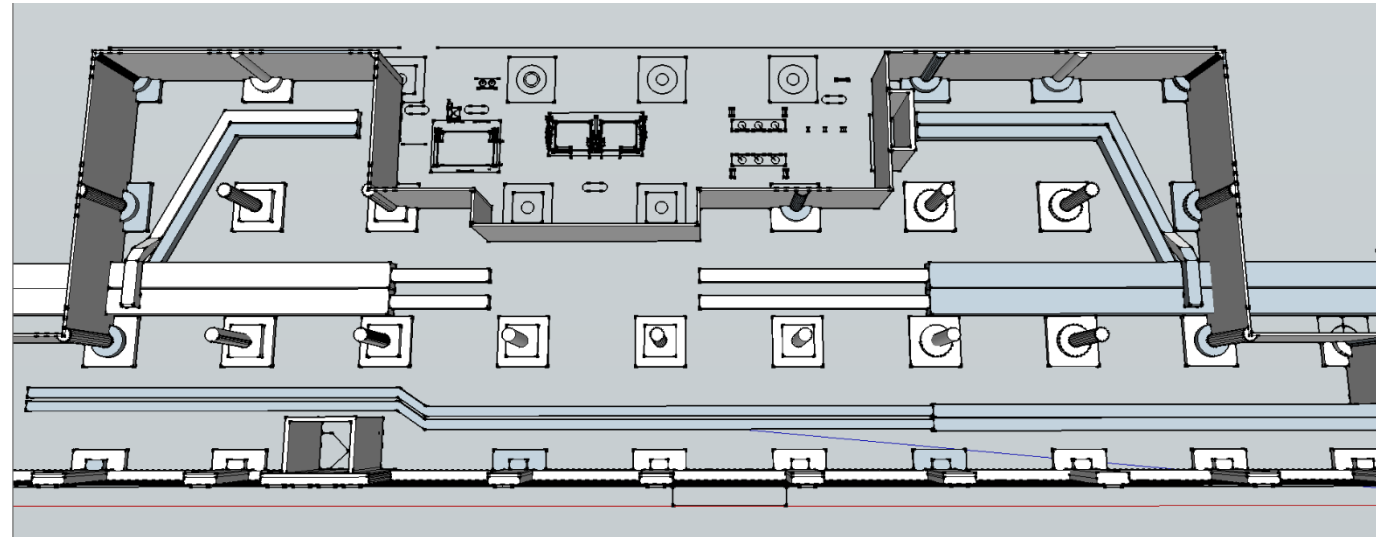
OPEN WORK AREA SKETCHES



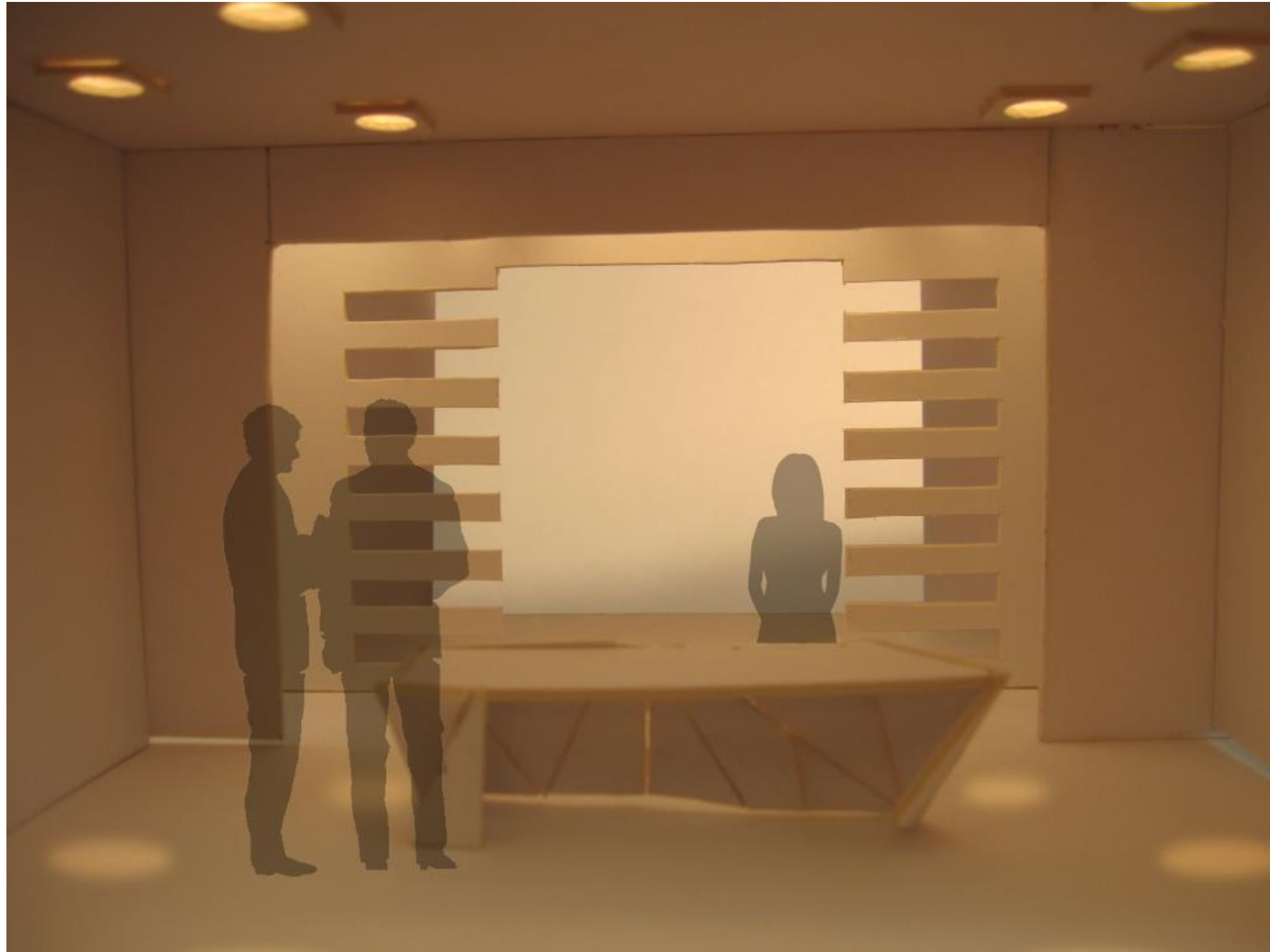
LIGHTING SKETCHES



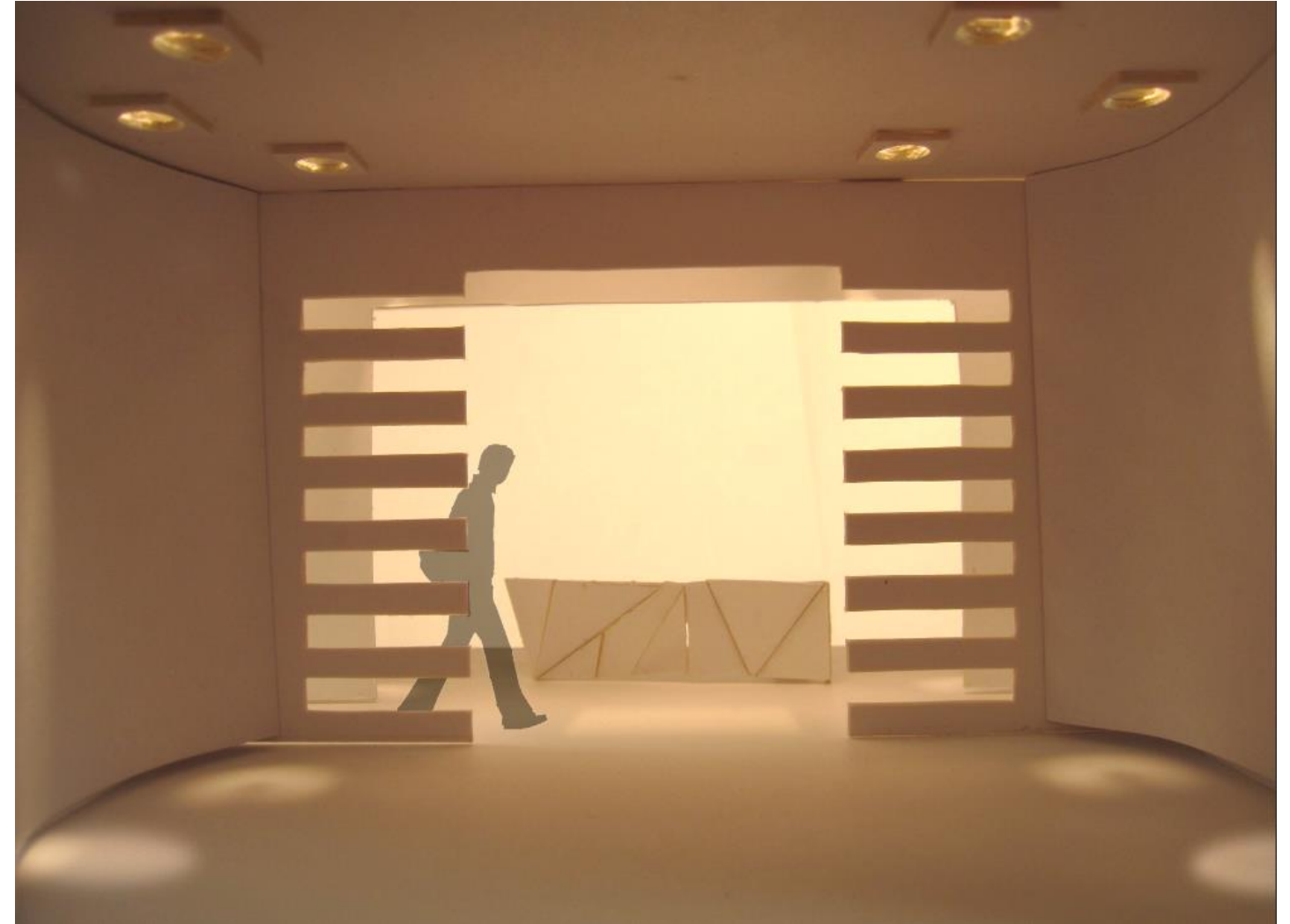
SYSTEMS RCP



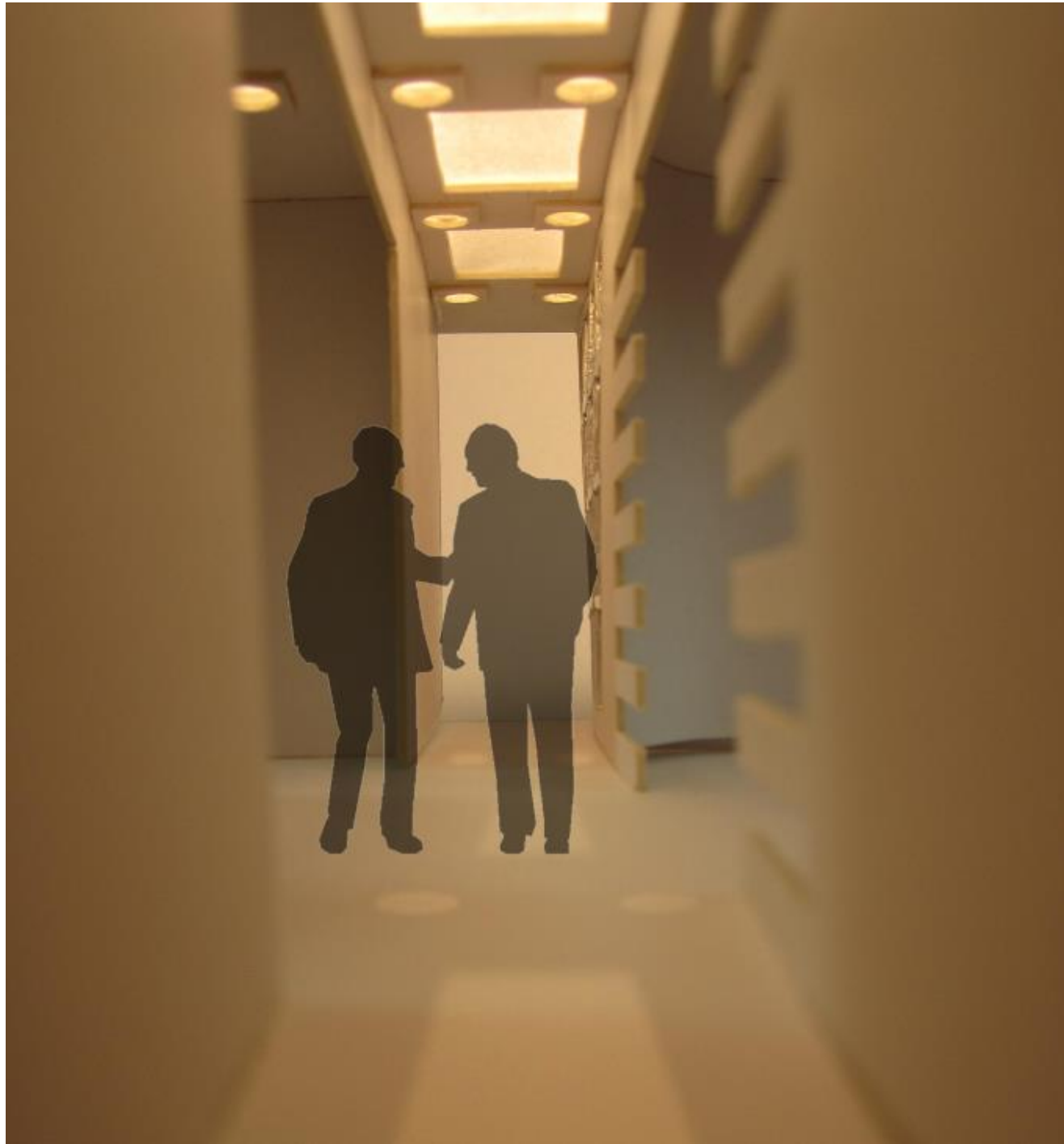
LIGHTING MODEL



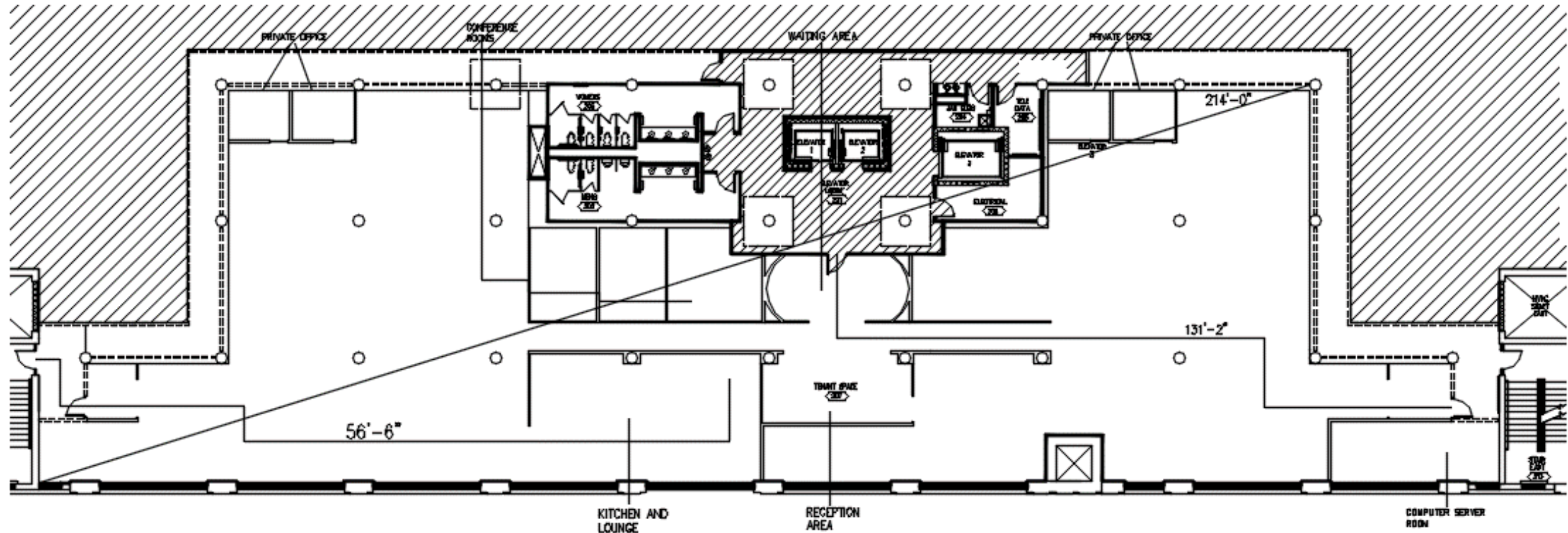
LIGHTING MODEL




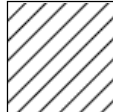
LIGHTING MODEL



LIFE SAFETY PLAN



 LIFE SAFETY PLAN
SCALE: 1/16" = 1'

 = OUTSIDE OF PLAN AREA

Buerr
Designs

LIFE SAFETY PLAN

Building Construction and Occupancy

Construction Type	Sprinklers?	Occupancy Type			
Type I Concrete/Steel	Yes	Business (B)			

Exit Requirements: Number and Arrangement of Exits

Space Designation	# of Exits		Travel Distance		Arrangement: Means of Egress	
	Required	Shown on Plans	Allowable Distance	Actual Distance Shown on Plans	Req'd Distance Between Exits	Actual Distance Shown on Plans
3100	2	3	300'	214'	107'	120'

Notes:							

Use Group or Space Designation	(A)	(B)	Calculated Occupant Load = A/B	©		Exit Width (Inches)			
	Area = Sq. Ft.	Area per Occupant		Egress per Occupant		Required Width = (A/B)xC		Actual Width	
				Stair	Level	Stair	Level	Stair	Level
3100	10,200 sqft	100 sqft	102	0.3"	0.2"	30.6"	20.4"	5'-7 1/2"	5'-0"

Notes:							
--------	--	--	--	--	--	--	--

LIGHTING ANALYSIS

ZUMTOBEL LIGHTING



$$\text{Maintained fc} = \frac{\# \text{ of lamps} \times \text{initial lamp lumens} \times \text{LLF} \times \text{CU}}{\text{area}}$$

$$\text{LLF} = \text{LLD} \times \text{LDD}$$

$$\text{LLF} = .93 \times .7$$

$$\text{LLF} = .651$$

$$\text{RCR} = 5(H)(L+W)/L \times W$$

$$\text{RCR} = 5(6 \frac{1}{2})(8+10)/80$$

$$\text{RCR} = 7.3125$$

$$\text{Maintained fc} = \frac{2 \times 3800 \times .651 \times 7.3125}{80}$$

$$\text{Maintained fc} = 452.24$$

LIGHTING ANALYSIS

LIGHT FIELDS™ LED, 2x2, 40W, 4000K

Efficacy = 93lm/W

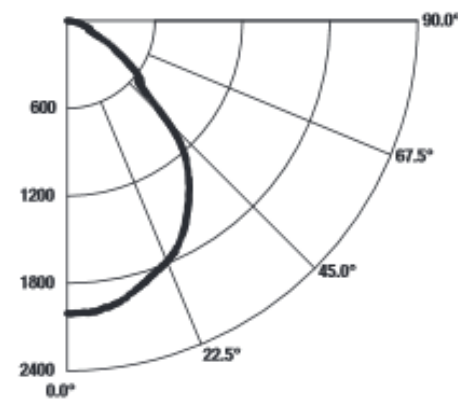
Luminance Data (cd/sq.m)

Angle In Degrees	Average 0-Deg	Average 45-Deg	Average 90-Deg
45°	4051	4404	4120
55°	2647	2050	2826
65°	1318	1481	1350
75°	1186	785	1234
85°	573	354	656

ZUMTOBEL LIGHTING



Candela Distribution



Vertical Angle	Horizontal Angle			Zonal Lumens
	0°	45°	90°	
0°	2006	2006	2006	
5°	2000	2004	2005	177.9
15°	1890	1893	1895	533.9
25°	1754	1698	1748	790.5
35°	1454	1461	1449	900.7
45°	947	1029	963	742.4
55°	502	389	536	368.0
65°	184	207	189	183.1
75°	101	67	106	91.1
85°	17	10	19	19.5
90°	0	0	0	

Coefficients Of Utilization - Zonal Cavity Method

Effective Floor Cavity Reflectance 0.20

RC RW	80				70				50			30		
	70	50	30	10	70	50	30	10	50	30	10	50	30	10
0	119	119	119	119	116	116	116	116	111	111	111	106	106	106
1	111	107	104	101	109	105	102	99	101	99	96	97	95	93
2	103	97	91	86	101	95	90	85	91	87	84	88	85	82
3	96	87	80	75	93	86	79	74	83	77	73	80	76	72
4	89	79	71	66	87	78	71	65	75	69	64	73	68	64
5	83	72	64	58	81	71	63	58	69	62	57	67	61	57
6	77	65	58	52	75	64	57	52	63	56	51	61	55	51
7	72	60	52	47	70	59	52	47	58	51	46	56	50	46
8	67	55	48	42	66	55	47	42	53	47	42	52	46	42
9	63	51	44	39	62	50	43	39	49	43	38	48	42	38
10	59	47	40	35	58	47	40	35	46	40	35	45	39	35