

PORTFOLIO 1

DEANDRA GOODMAN

IDSN 3600

– SYSTEMS –

FALL 2015

Administration & Account Admin

PERSONNEL

Position	Personnel Totals		Unit Square Ft.		Extended Sq. Feet	Equipment			Notes
	Current	Future	Office	Workstation		PC	Printer	Fax	
					0				
					0				
Manager	0	1		200	200	1			
					0				
					0				
					0				
					0				
					0				
					0				
					0				
					0				
					0				
Personnel Totals:	0	1			200	1	0	0	

Department Summary

Information:

Personnel	200	Square Ft.
Equipment	0	Square Ft.
Sub Total:	200	Square Ft.
Circulation	1.54	
Total Carpetable:	308	Square Ft.

Interviewee:

Interview Date:

Revision Submitted:

Sign Off:

SUPPORT/EQUIPMENT SPACES

Space	Support/Equipment		Unit Square Feet	Extended Sq. Feet	Location	Notes
	Current	Future				
				0		
Finance				0		
				0		
				0		
				0		
				0		
				0		
				0		
				0		
				0		
				0		
				0		
Support Totals:				0		

Department Notes:

Creative Services

PERSONNEL

Position	Personnel Totals		Unit Square Ft.		Extended Sq. Feet	Equipment			Notes
	Current	Future	Office	Workstation		PC	Printer	Fax	
					0				
General Office Members	0	87		36	3132				
					0				
					0				
					0				
					0				
					0				
					0				
					0				
					0				
					0				
					0				
Personnel Totals:	0	87			3132	0	0	0	

Department Summary Information:	
Personnel	3132 Square Ft.
Equipment	900 Square Ft.
Sub Total:	4032 Square Ft.
Circulation	1.54
Total Carpetable:	6209.3 Square Ft.

Interviewee:
 Interview Date:
 Revision Submitted:
 Sign Off:

SUPPORT/EQUIPMENT SPACES

Space	Support/Equipment		Unit Square Feet	Extended Sq. Feet	Location	Notes
	Current	Future				
				0		
				0		
				0		
Concept Lounge	0	1	800	800		
				0		
				0		
Storage	0	1	100	100		
				0		
				0		
				0		
				0		
				0		
Support Totals:				900		

Department Notes:

Support

PERSONNEL

Position	Support/Equipment		Unit Square Ft.	Extended Sq. Feet	Location	Notes
	Current	Future				
Receptionist	0	1	100	100		
				0		
				0		
				0		
				0		
				0		
				0		
				0		
				0		
				0		
				0		
				0		
Personnel Totals:	0	1		100		

Department Summary Information:		
Personnel	100	Square Ft.
Equipment	1585	Square Ft.
Sub Total:	1685	Square Ft.
Circulation	1.54	
Total Carpetable:	2594.9	Square Ft.

Interviewee:
 Interview Date:
 Revision Submitted:
 Sign Off:

SUPPORT/EQUIPMENT SPACES

Space	Support/Equipment		Unit Square Feet	Extended Sq. Feet	Location	Notes
	Current	Future				
				0		
Reception	1	1	300	300	Direct access to Broadcast, Executive, Mktg	Waiting for 6, TV's
				0		
Conference Room	1	1	225	225	Shared by all areas	Full AV
				0		
Computer Service Area	0	1	80	80	Near work area	Work counter, outlets
Computer Server Room		1	80	80		
Copy/Fax Station	1	1	100	100	Near work stations	Work counter
Pantry	1	1	200	200	Spread throughout	Coffee, sink, refrigerator, cabinets
Dining	0	1	300	300	Near concept lounge	eating
				0		
Mechanical Room	0	1	300	300	Near Base Building air supply	Supplemental Air
				0		
Support Totals:				1585		

Department Notes:

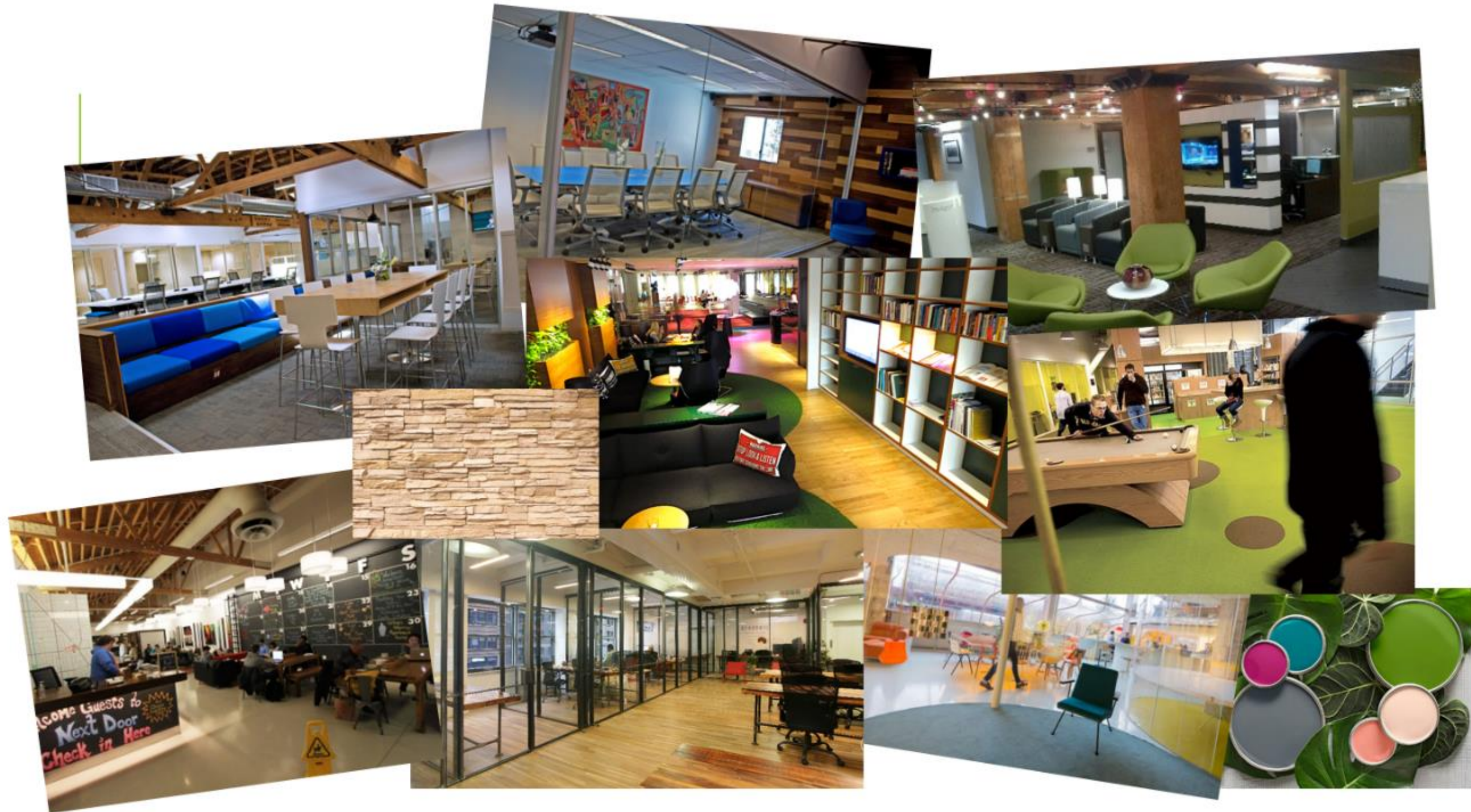
CONCEPT STATEMENT

Located in the city of Richmond, Virginia, sitting snugly on tobacco row near the beautiful James River, is a new coworking office space. This office space is designed to be a functional, creative place to come and work, for people who are between working in an office and working from home. This is wonderful environment where freelancers, writers, and business driven individuals can come and work but also let off some steam and get their creative juices flowing.

- The James River brings the beautifully untouched wilderness to the heart of the busy city with rocks, meadows, forests and rapids.
- Drawing inspiration from the outdoor environment, calm and neutral colors are seen throughout the office with touches of green and blue, paired with bright accents, it is quite reminiscent of the James River Park system which is the most visited in Richmond.
- Light stone and warm wood tones, as well as live foliage and water features, will transport members from the usual cramped and cold work environment to a relaxing oasis where one can unwind and get work done productively.
- Just as the James River brings exquisite nature to the hustle and bustle of the city, one can expect the same escape from the stress of the work environment.



INSPIRTATION

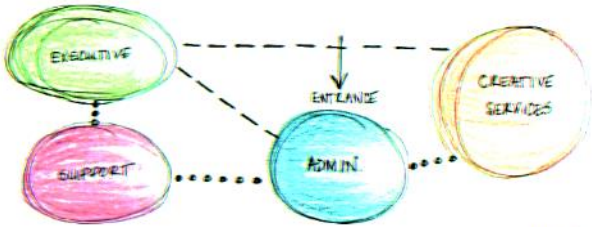




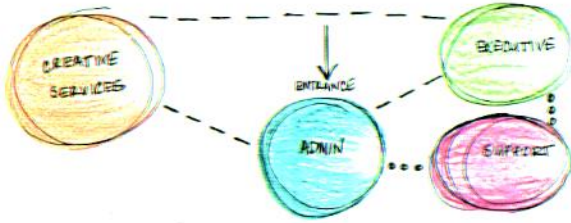
PORTFOLIO 2

DEANDRA GOODMAN
IDSN 3600 : SYSTEMS
FALL 2015

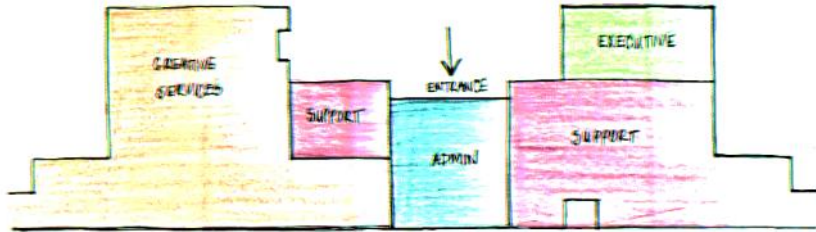
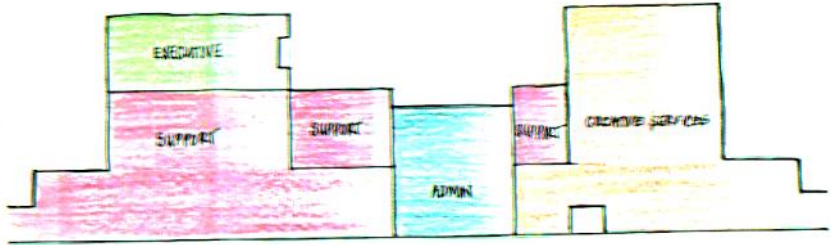
SCHEMATICS



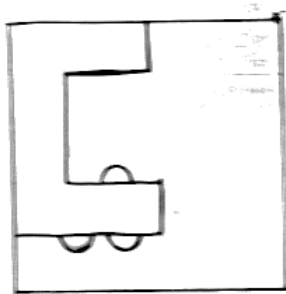
KEY
... WALL
--- MINUTE



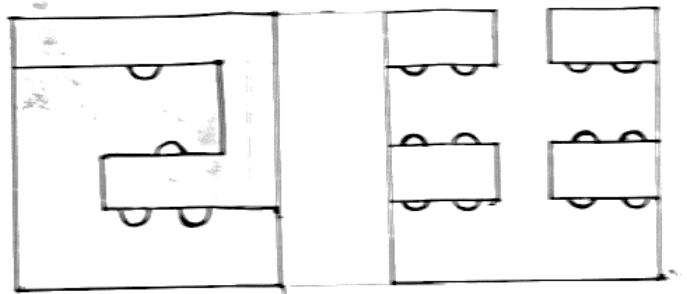
KEY
... WALL
--- MINUTE



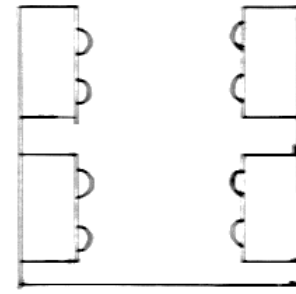
SPACE STANDARD DRAWINGS



OFFICE PLAN 1



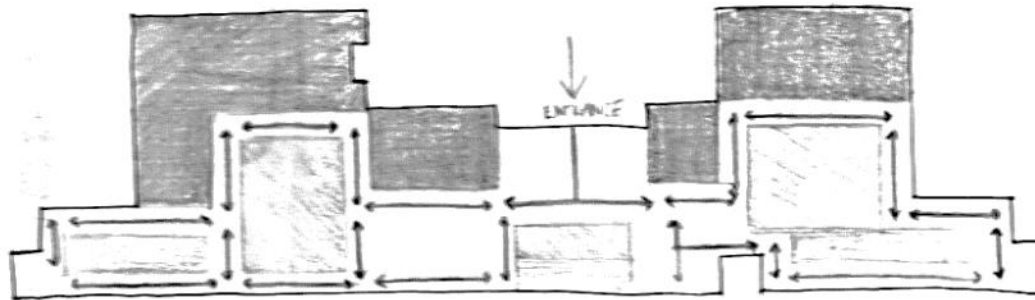
OFFICE PLAN 2



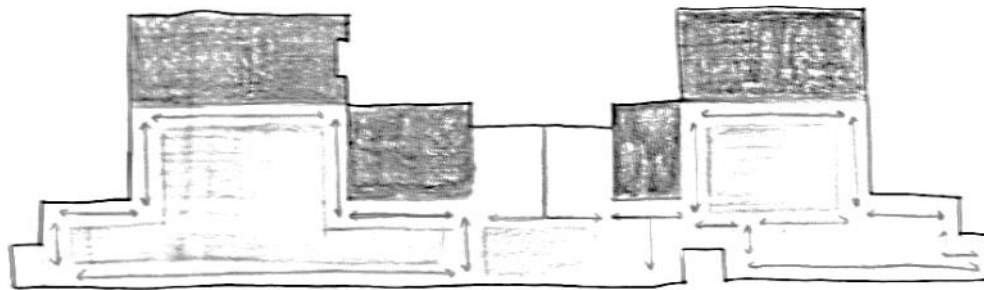
INFORMATION PLAN 1

INFORMATION PLAN 2

SPATIAL CONCEPT SKETCHES

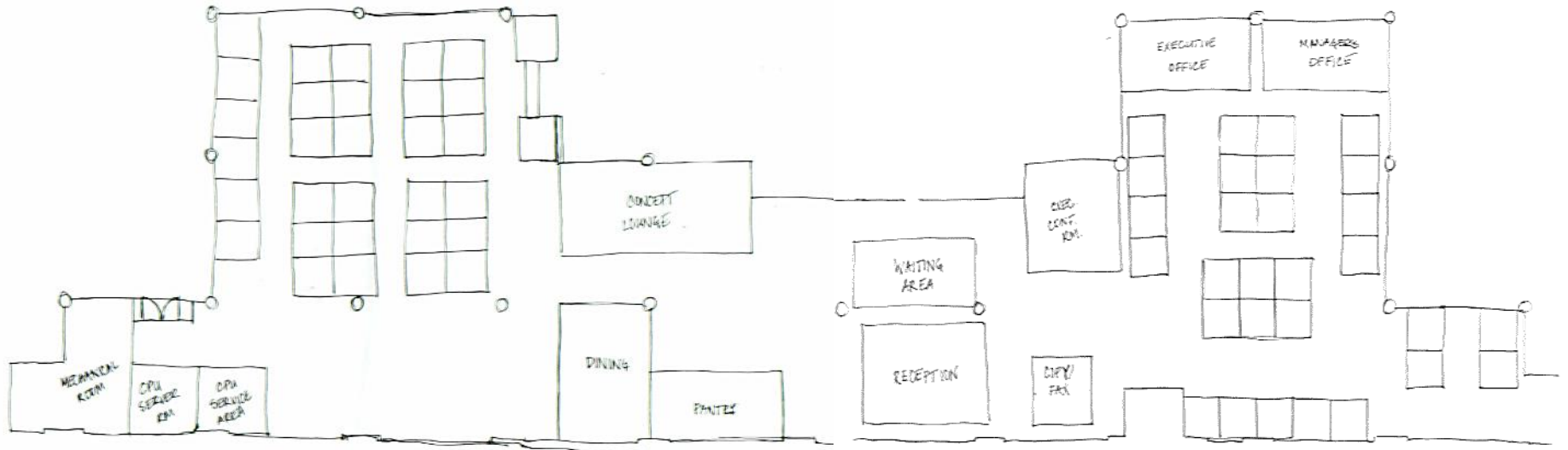


SPATIAL CONCEPT SKETCH 1

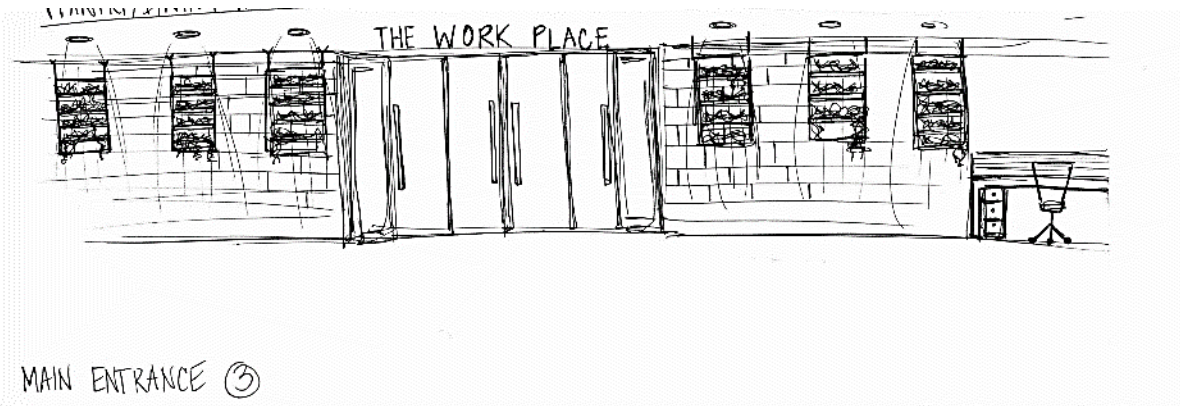
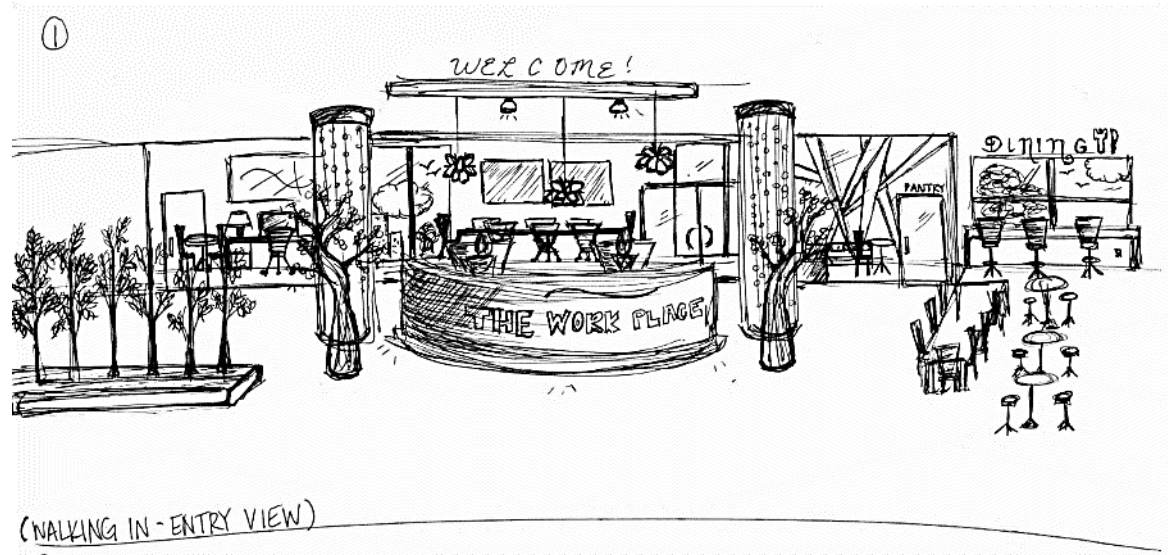


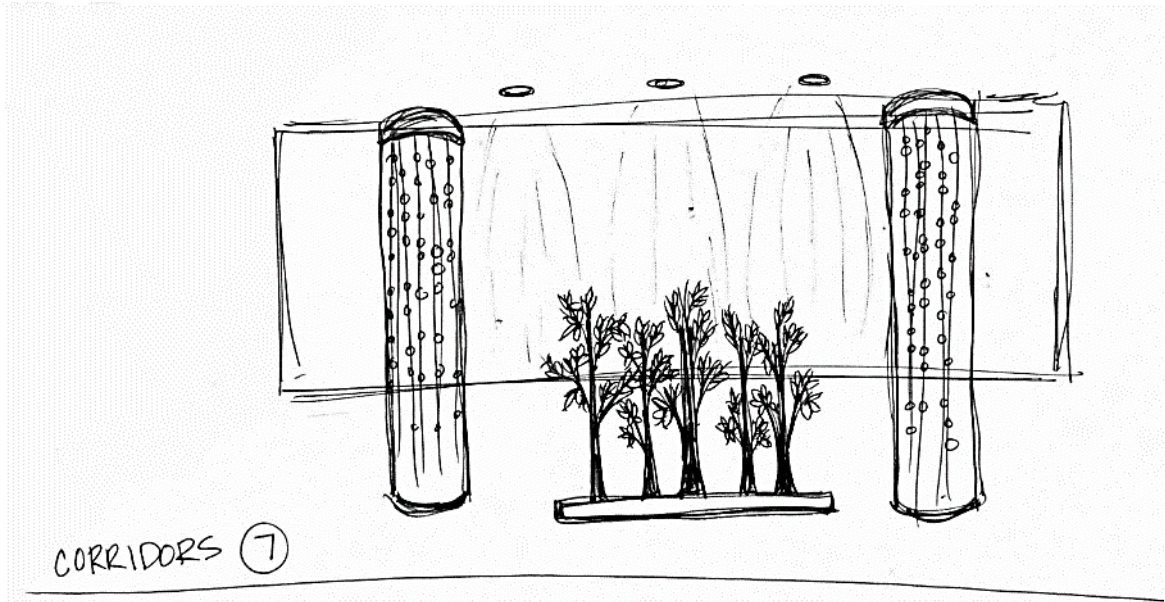
SPATIAL CONCEPT SKETCH 2

SPACE PLAN SKETCHES

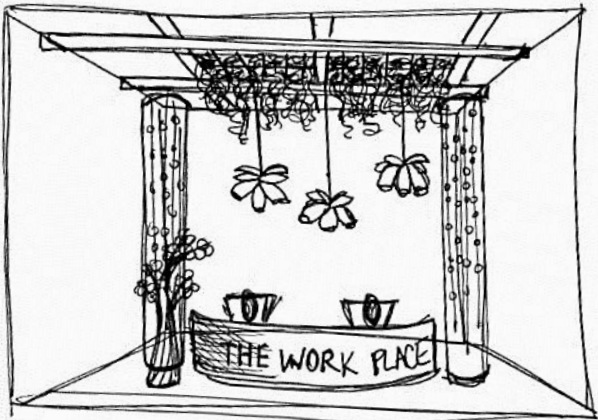


ENTRY AND MAIN CORRIDOR SKETCHES

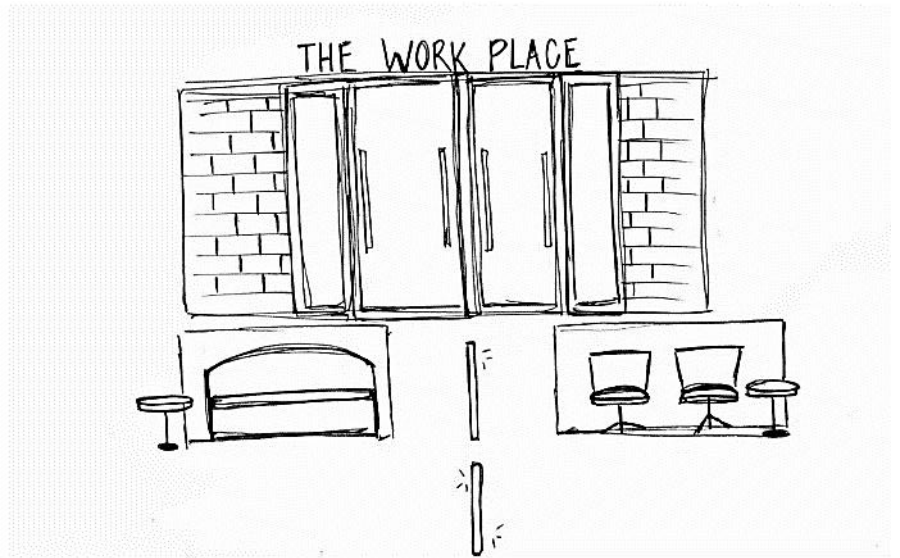




CORRIDORS (7)

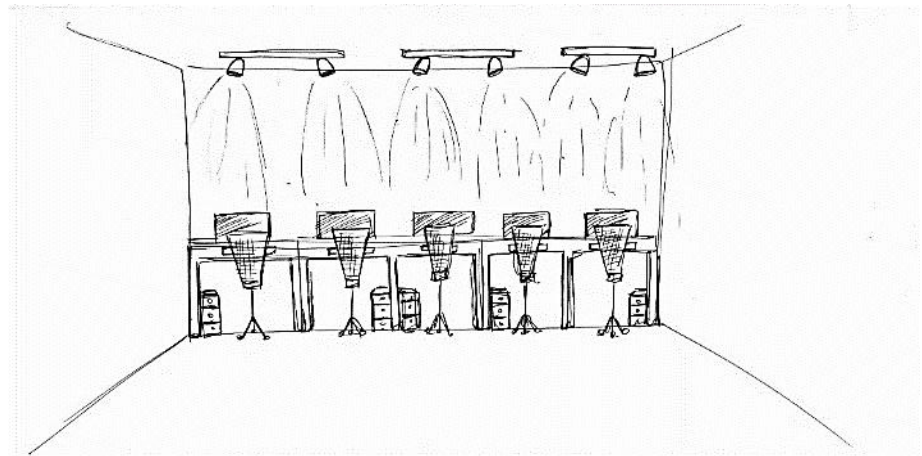
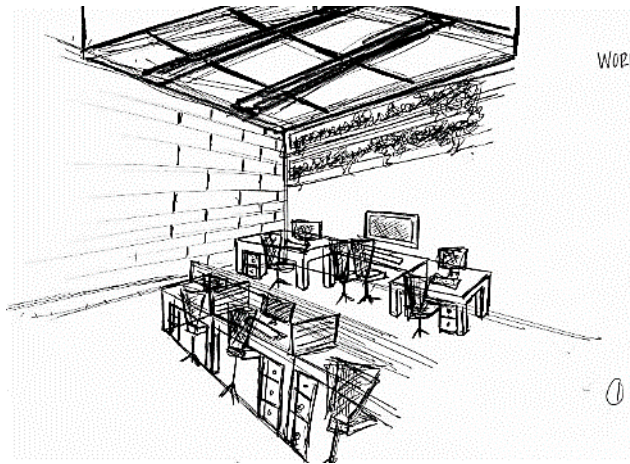
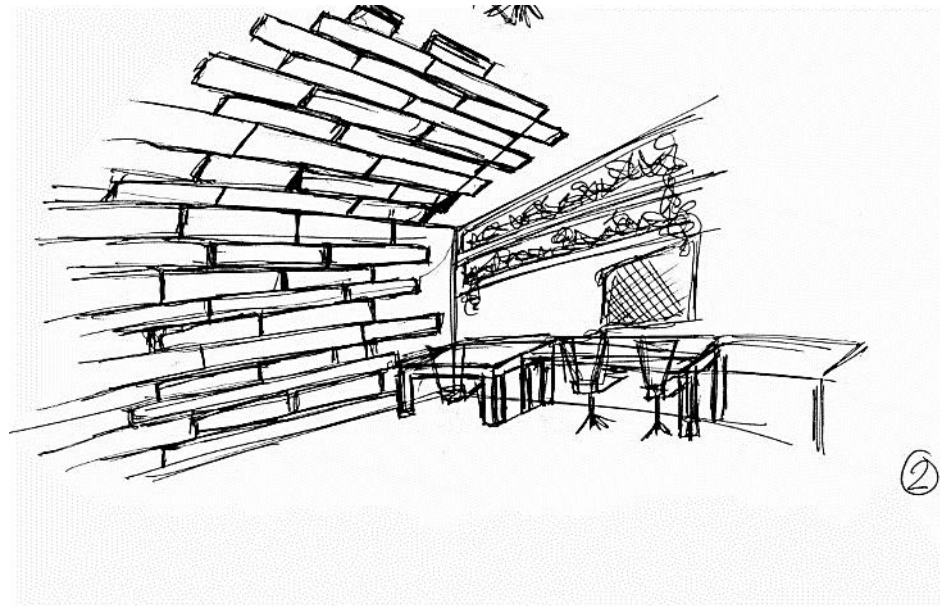


RECEPTION (5)

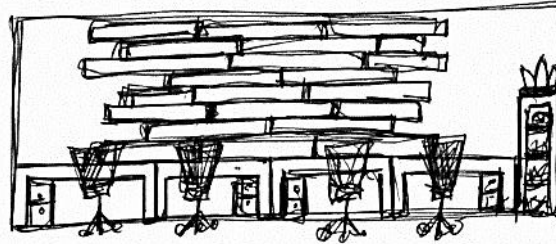


THE WORK PLACE

OPEN WORK AREA SKETCHES



WORK AREA,
FAR LEFT
WALL/CEILING
DETAIL



3



4

WORK AREA W/ UPLIGHTING &
ALTERNATING HEIGHT PLANTERS



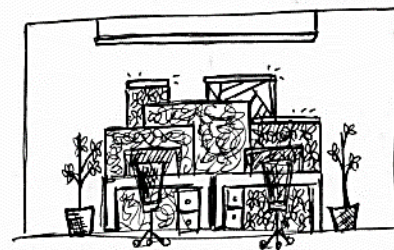
5

WORK AREA W/ ~~5'~~
5' PLANT WALL & UPLIGHTING



6

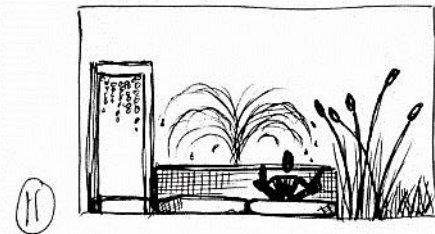
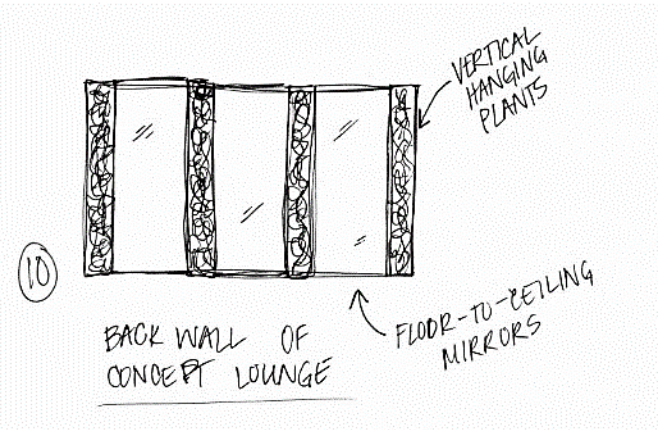
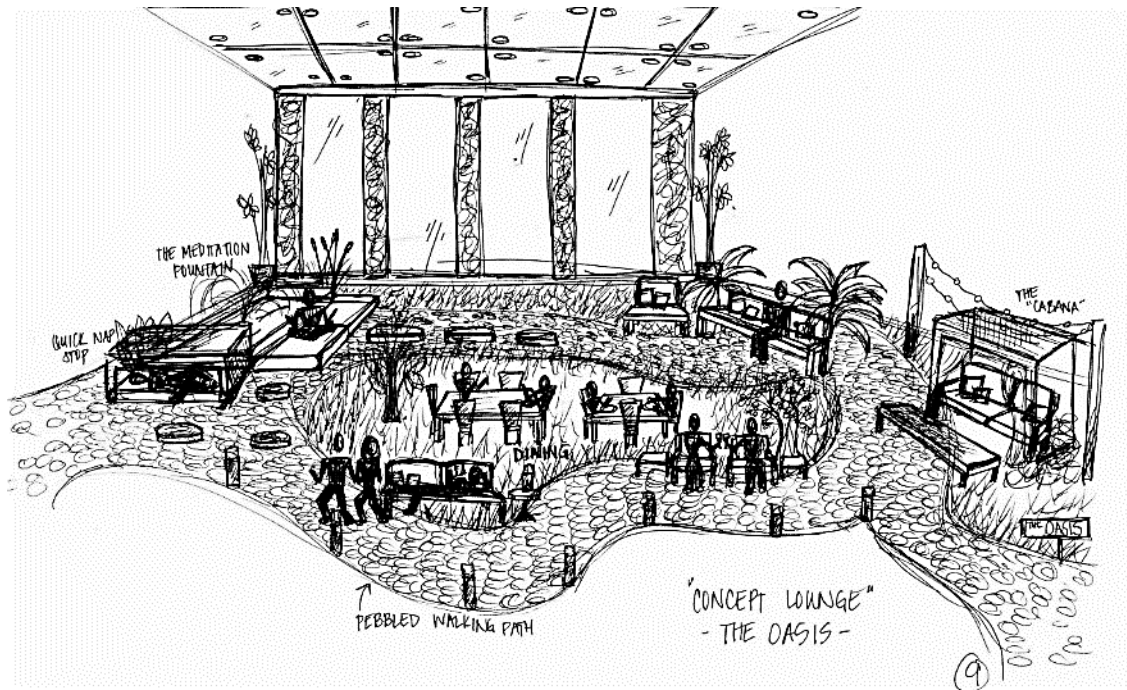
WORK AREA W/
BEADED CURTAIN,
FLOOR LAMPS & 3'-4'
PLANT WALL



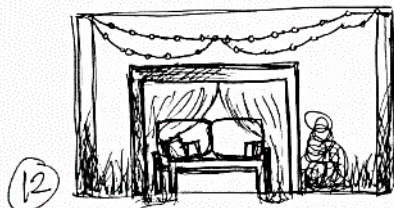
7

WORK AREA W/ ALTERNATING
HEIGHT PLANT & FLOWER WALLS
& UPLIGHTING

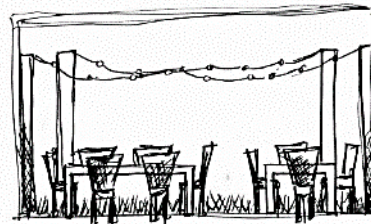
LOUNGE SKETCHES



MEDITATION FOUNTAIN

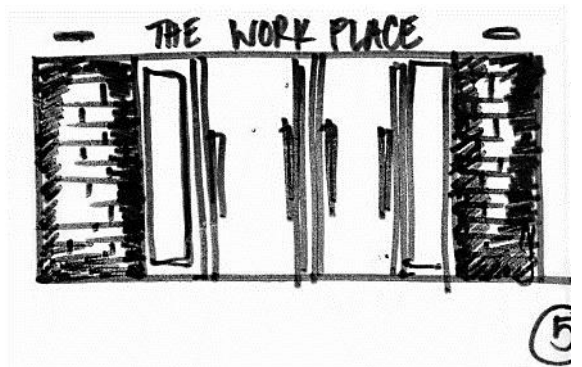
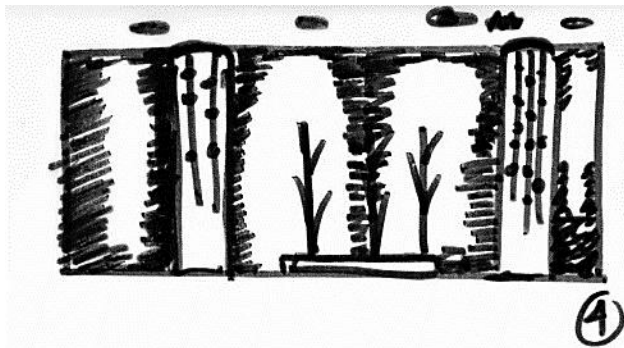
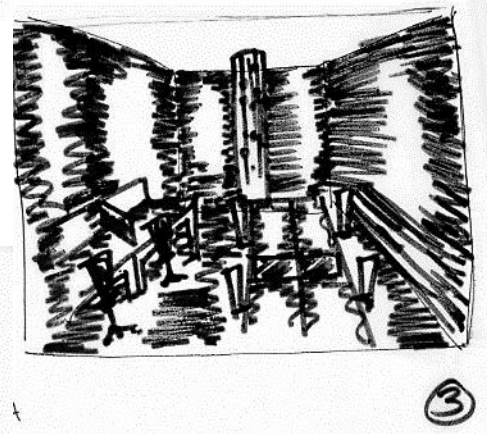
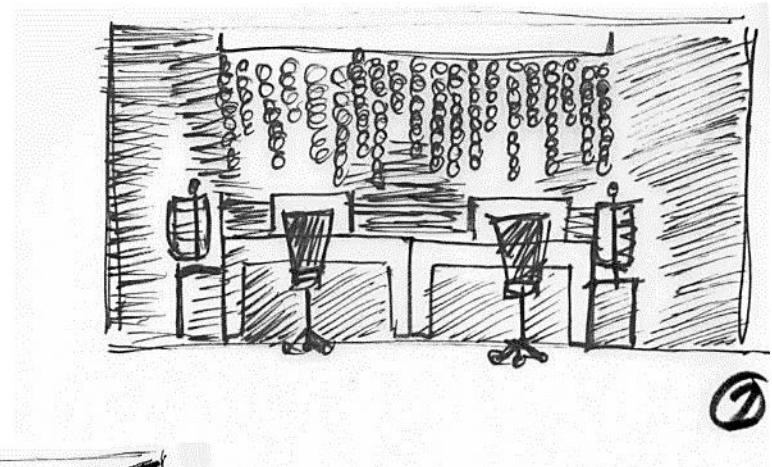
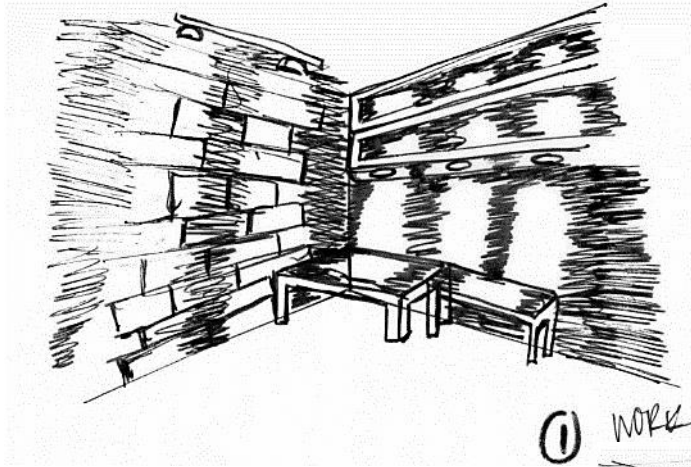


THE "CABANA"



PICNIC/DINING AREA

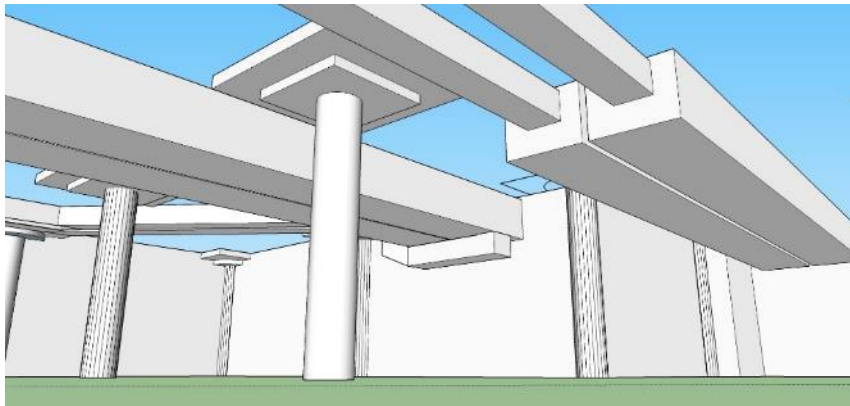
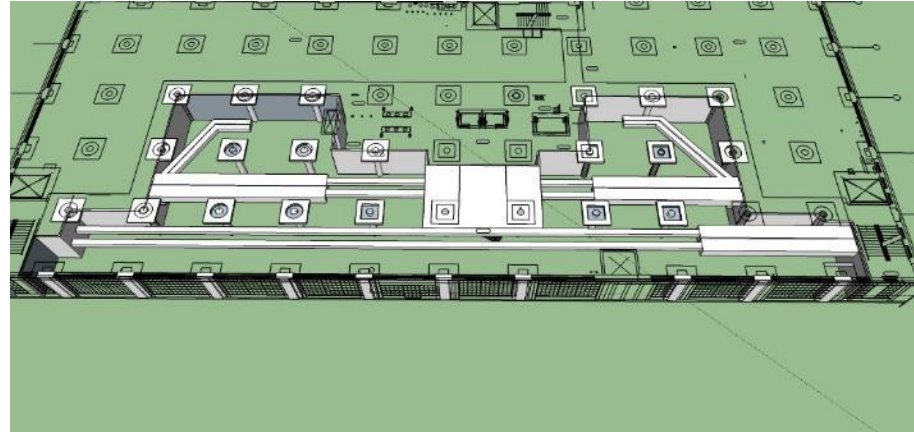
LIGHTING OVERLAYS

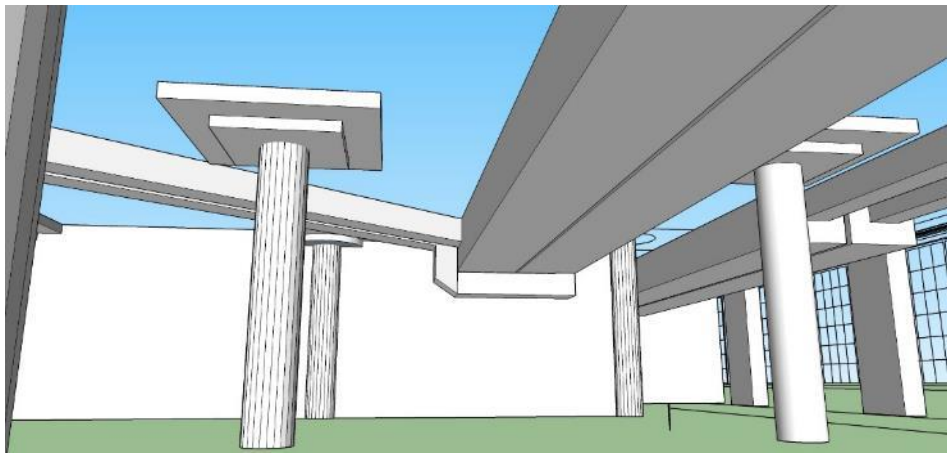
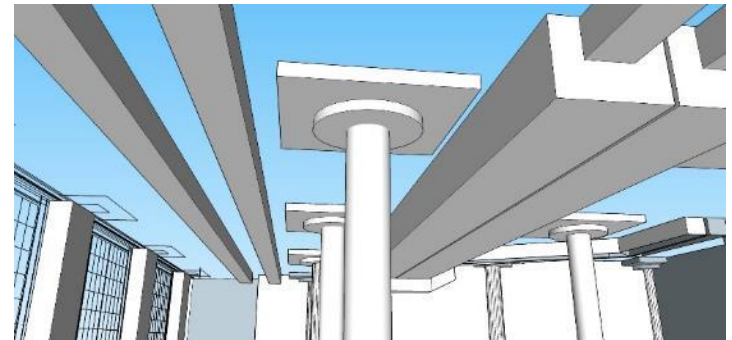
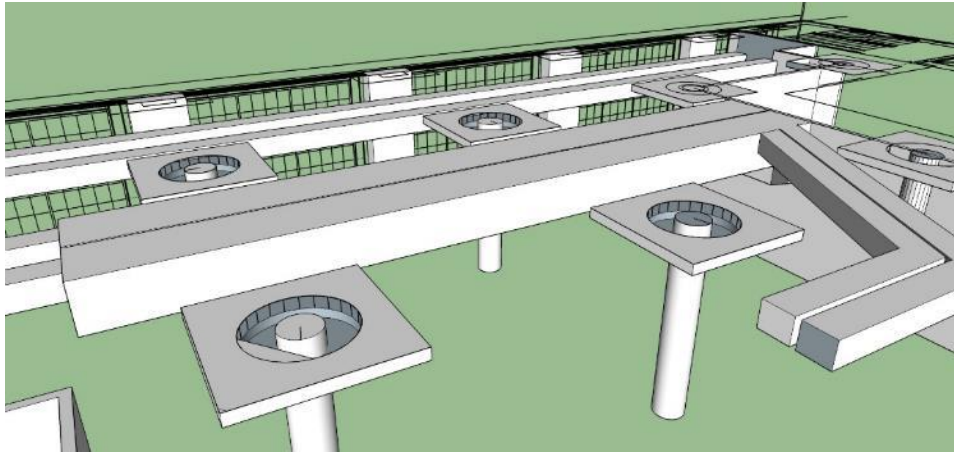


LIGHTING MODEL



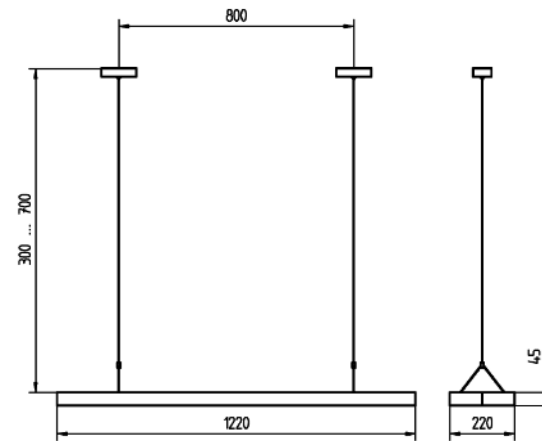
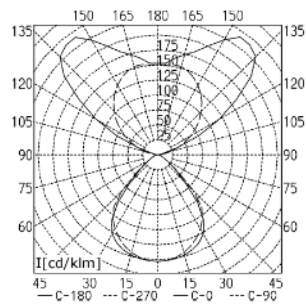
SYSTEMS RCP





LIGHTING ANALYSIS

distribution of luminous intensity



Errors and technical changes excepted. Images can vary from original.

www.waldmannlighting.com

© 08.2011 H. Waldmann GmbH & Co. KG

$$\text{Maintained FC} = \frac{(\text{Number of lamps}) \times (\text{Initial lamp lumens}) \times \text{LLF} \times \text{CU}}{\text{Area}}$$

$$\frac{(2) \times (4000) \times (.744) \times (25)}{234} = 635.89$$

$$\text{RCR} = \frac{5(H)(L+W)}{(L)(W)}$$

$$\frac{5(10)(26+9)}{(26)(9)}$$

$$\text{RCR} = .36$$

$$\text{LLF} = \text{LLD} \times \text{LDD}$$

$$.93 \times .8$$

$$\text{LLF} = .744$$

LIFE SAFETY PLAN

