

# PORTFOLIO 1

Ivy Griggs

IDSN 3600

FALL 2015

## **Assignment 3**

### *Concept Statement & Inspiration*

Entrepreneur George Williams is the owner of a 14,000 sq/ft office space located in Richmond, Virginia.

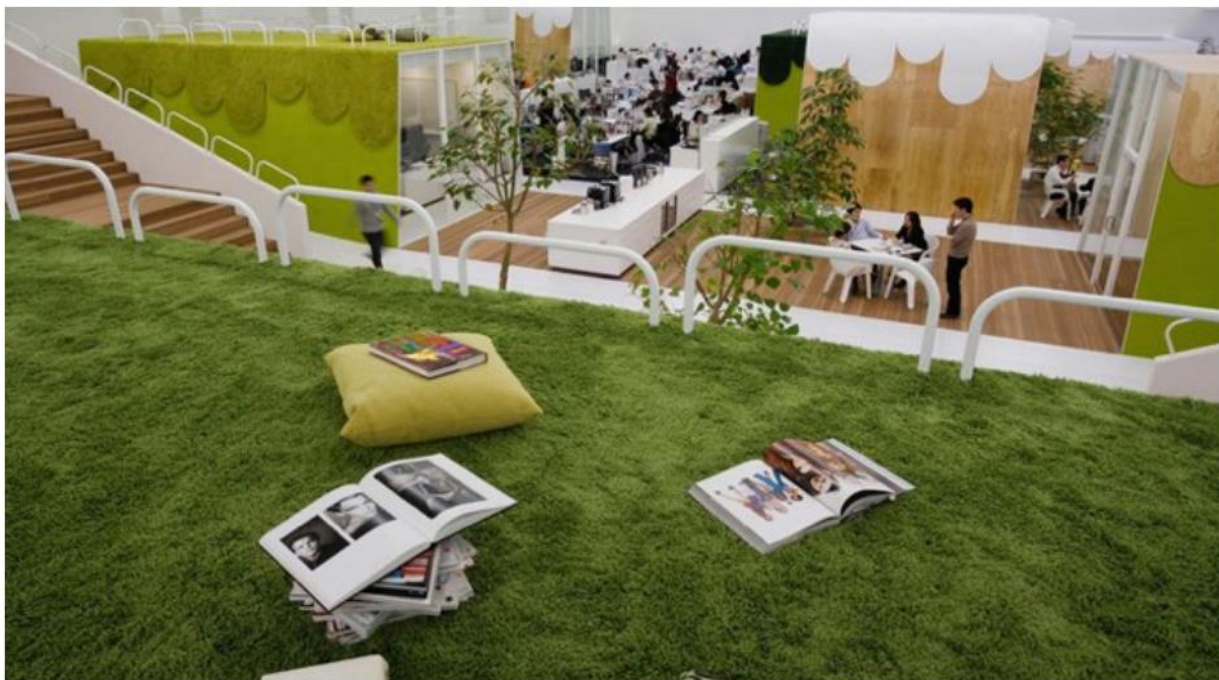
It has been vacant for two years and needs to be updated to accommodate today's needs of up and coming small businesses.

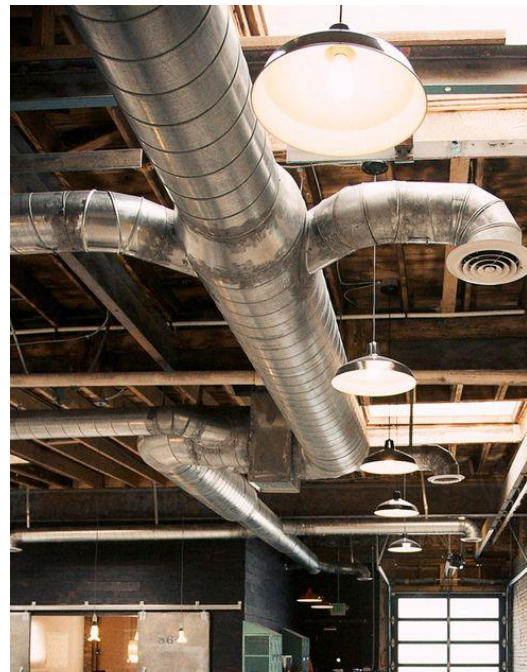
Williams wants to convert the office in to a co-working space in which he will rent out the space for new business owners to work.

He envisions the space to be modern with contrast and pops of color yet still keeping the buildings original architecture in tact.

The space needs to be:

- Open for better communication
- Encourage employee wellness
- Comfortable
- Current with trends
- Colorful
- Multi use spaces
- Organized
- Industrial
- Private zones separated from public
- Mixing natural materials



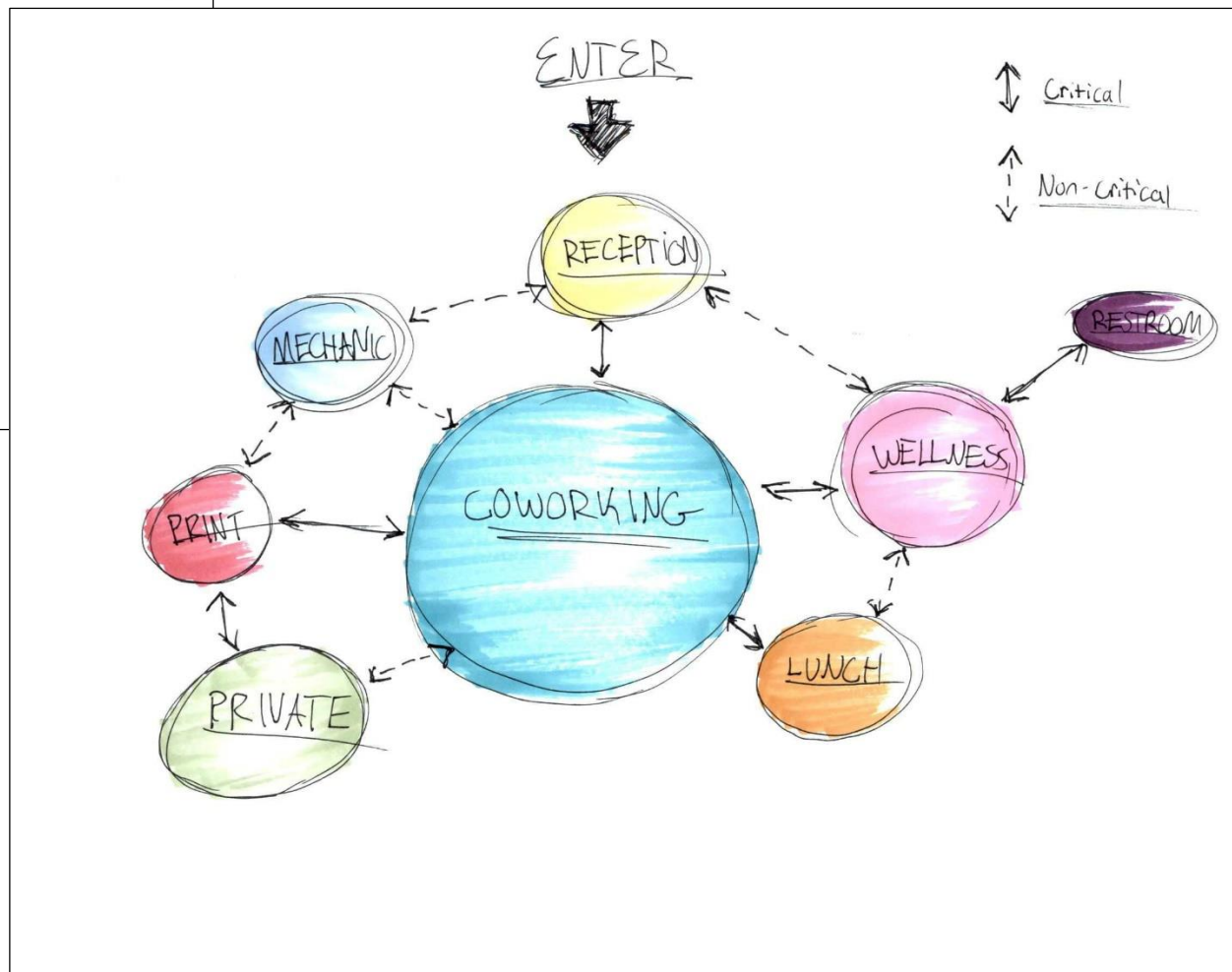
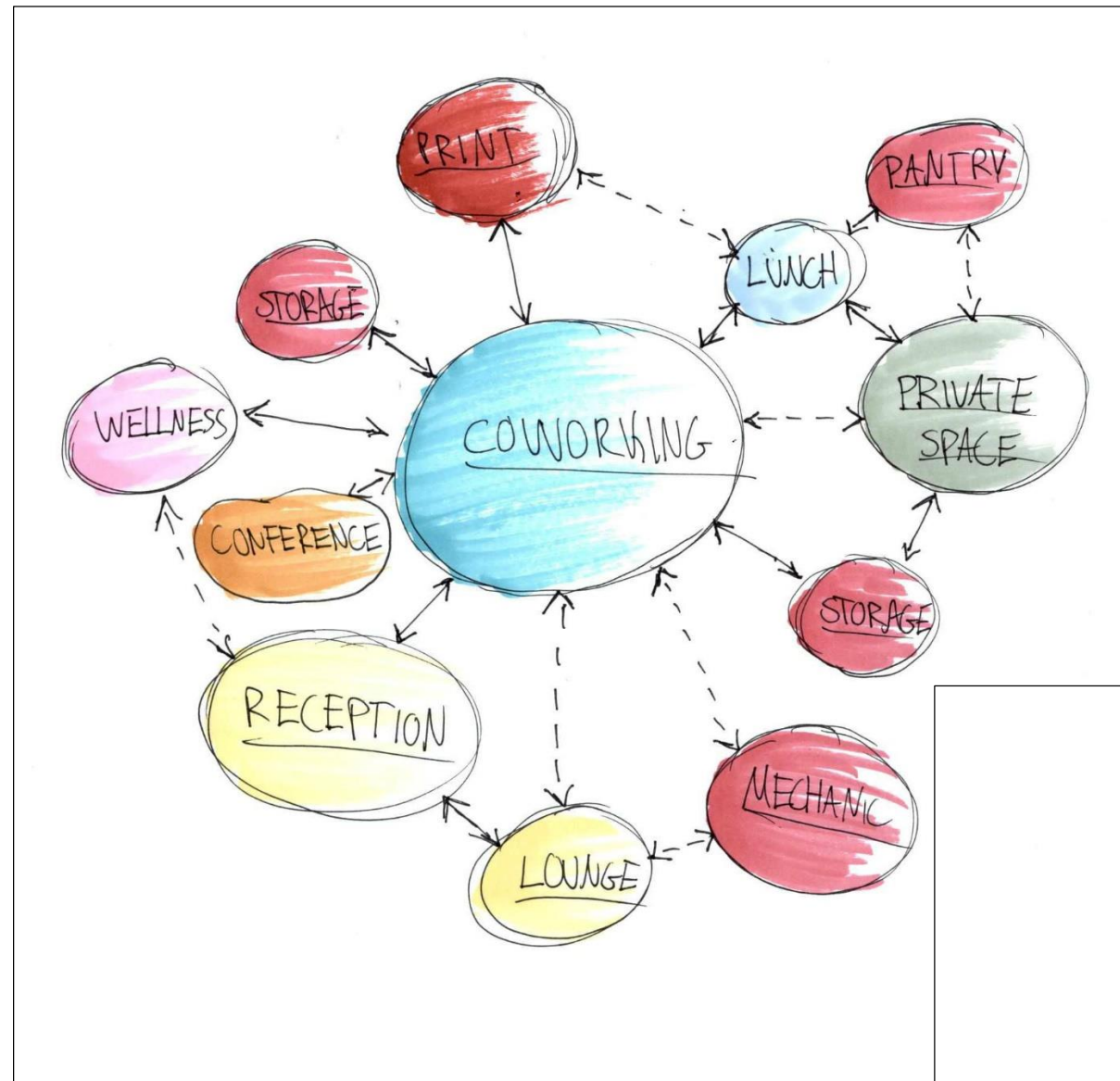


## PORTFOLIO 2

Ivy Griggs

IDSN 3600

FALL 2015



IDSN 3600

Systems III

Professor Gustina

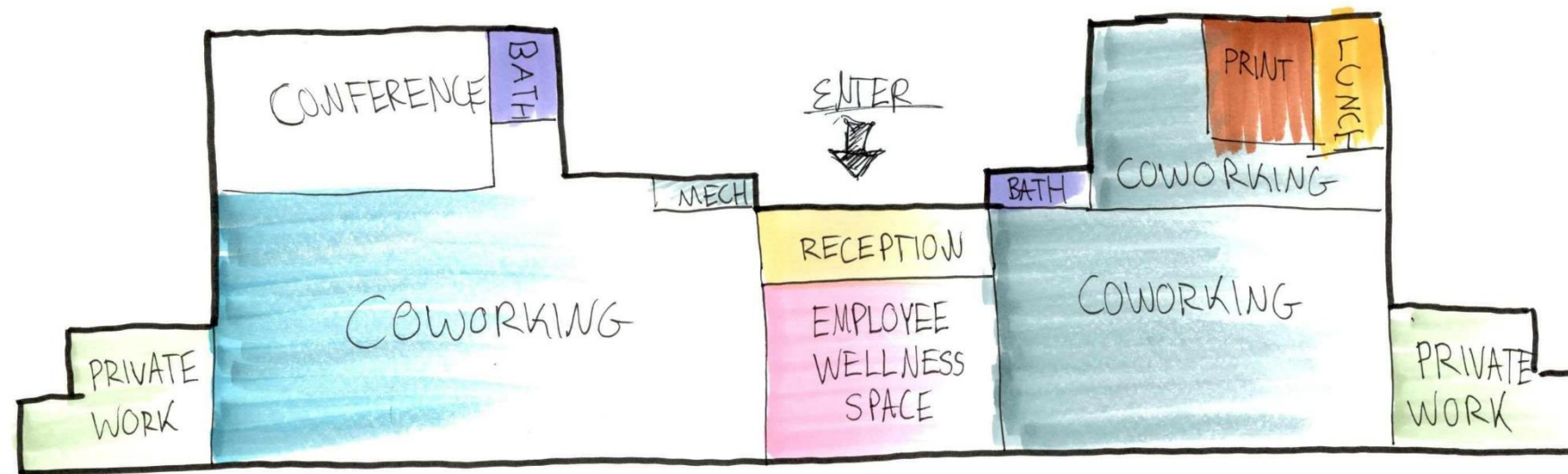
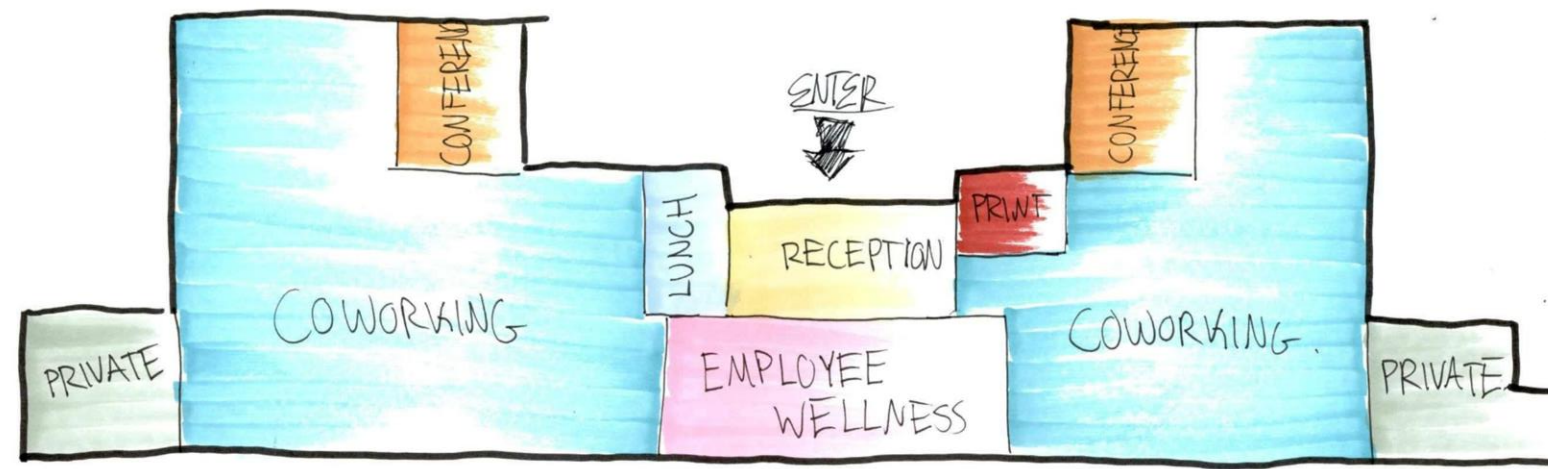
**Assignment 4**

Bubble Diagrams

Department of Interior  
Design & Merchandising

College of Human  
Ecology

East Carolina University



IDSN 3600

Systems III

Professor Gustina

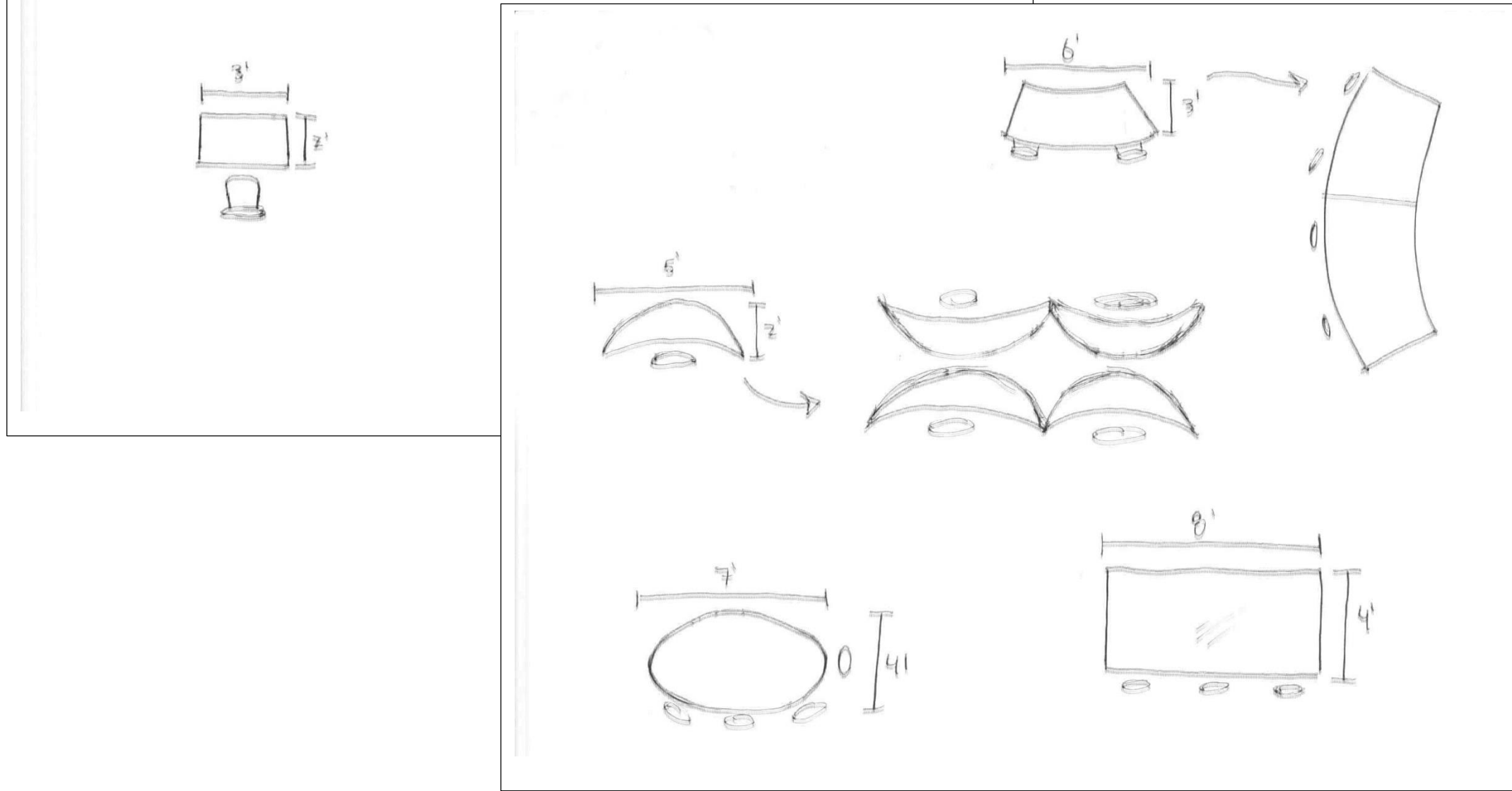
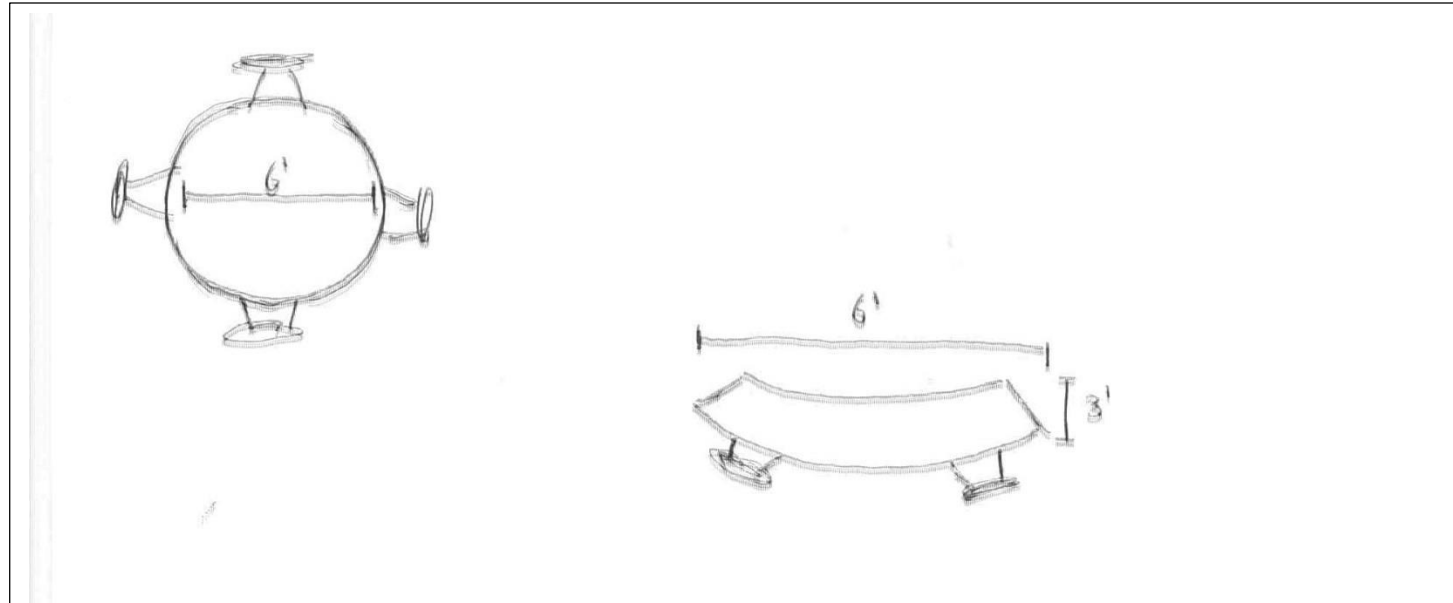
**Assignment 4**

Blocking Diagrams

Department of Interior  
Design & Merchandising

College of Human  
Ecology

East Carolina University



IDSN 3600

Systems III

Professor Gustina

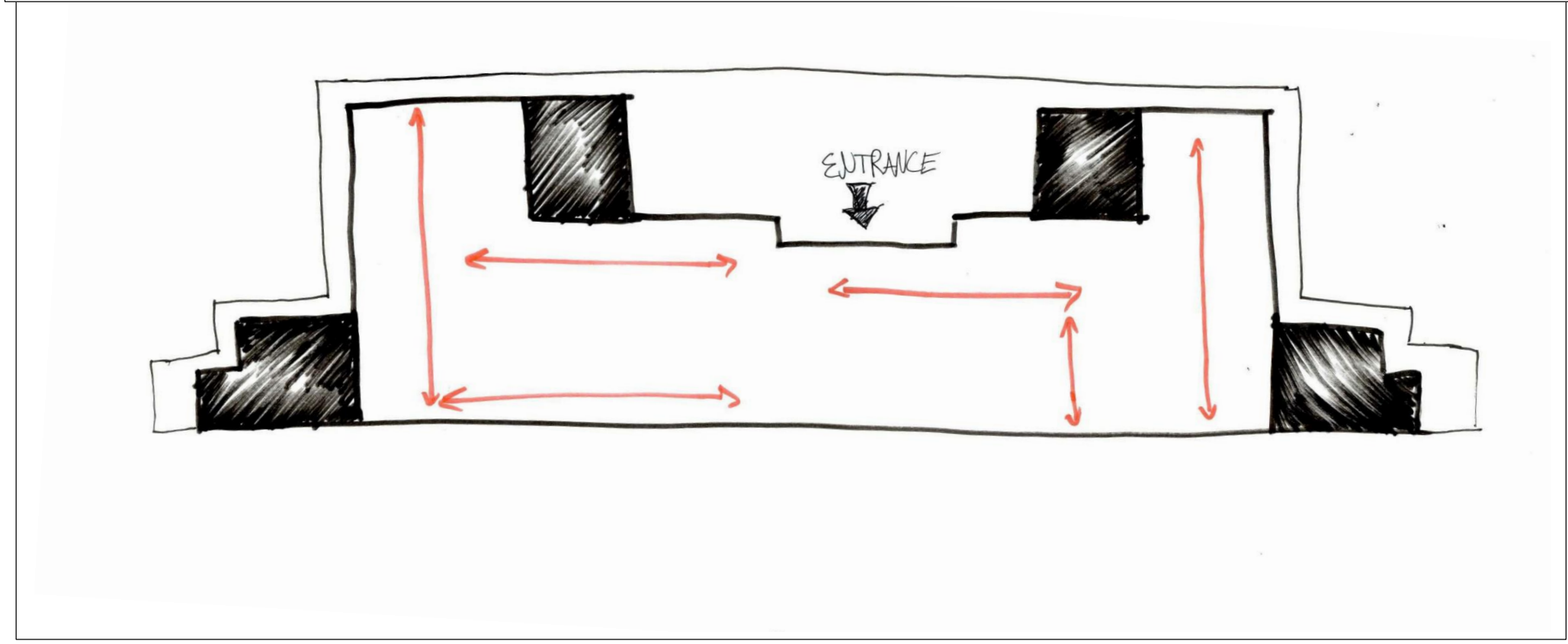
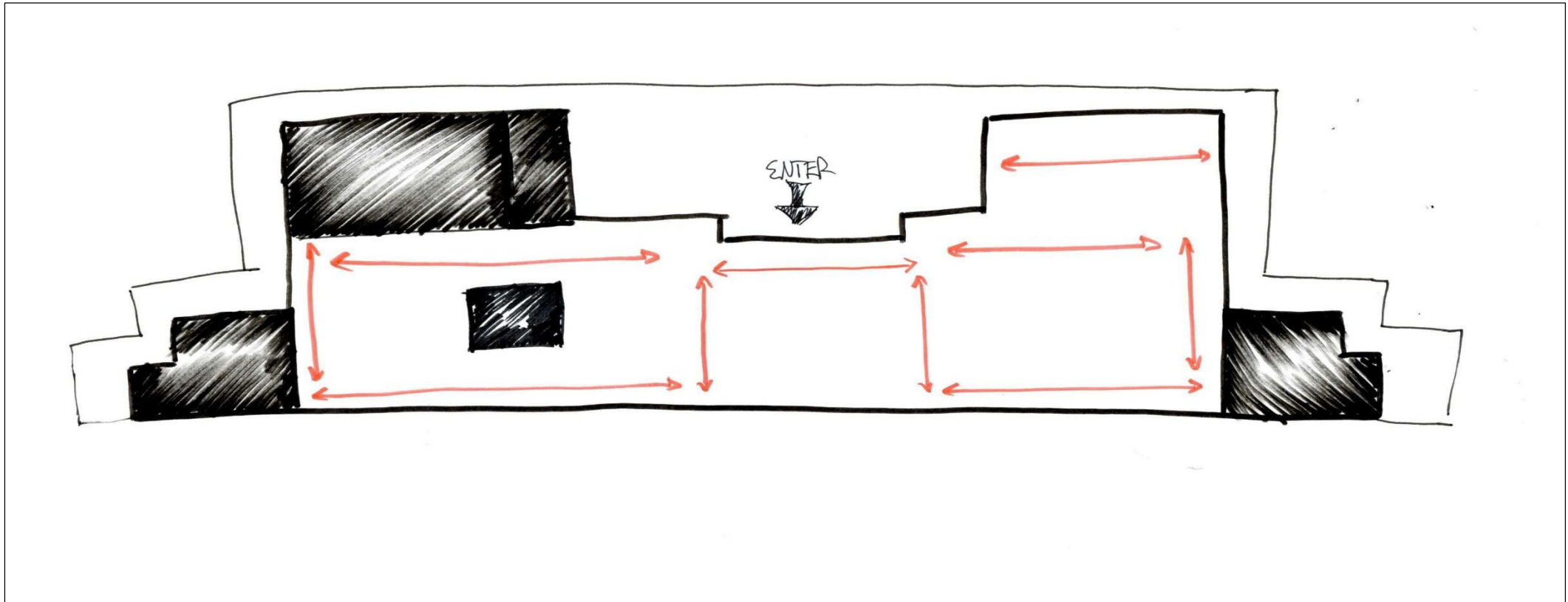
**Assignment 4**

Space Standard Drawings

Department of Interior  
Design & Merchandising

College of Human  
Ecology

East Carolina University



IDSN 3600

Systems III

Professor Gustina

**Assignment 5**

Spatial Concept Sketches

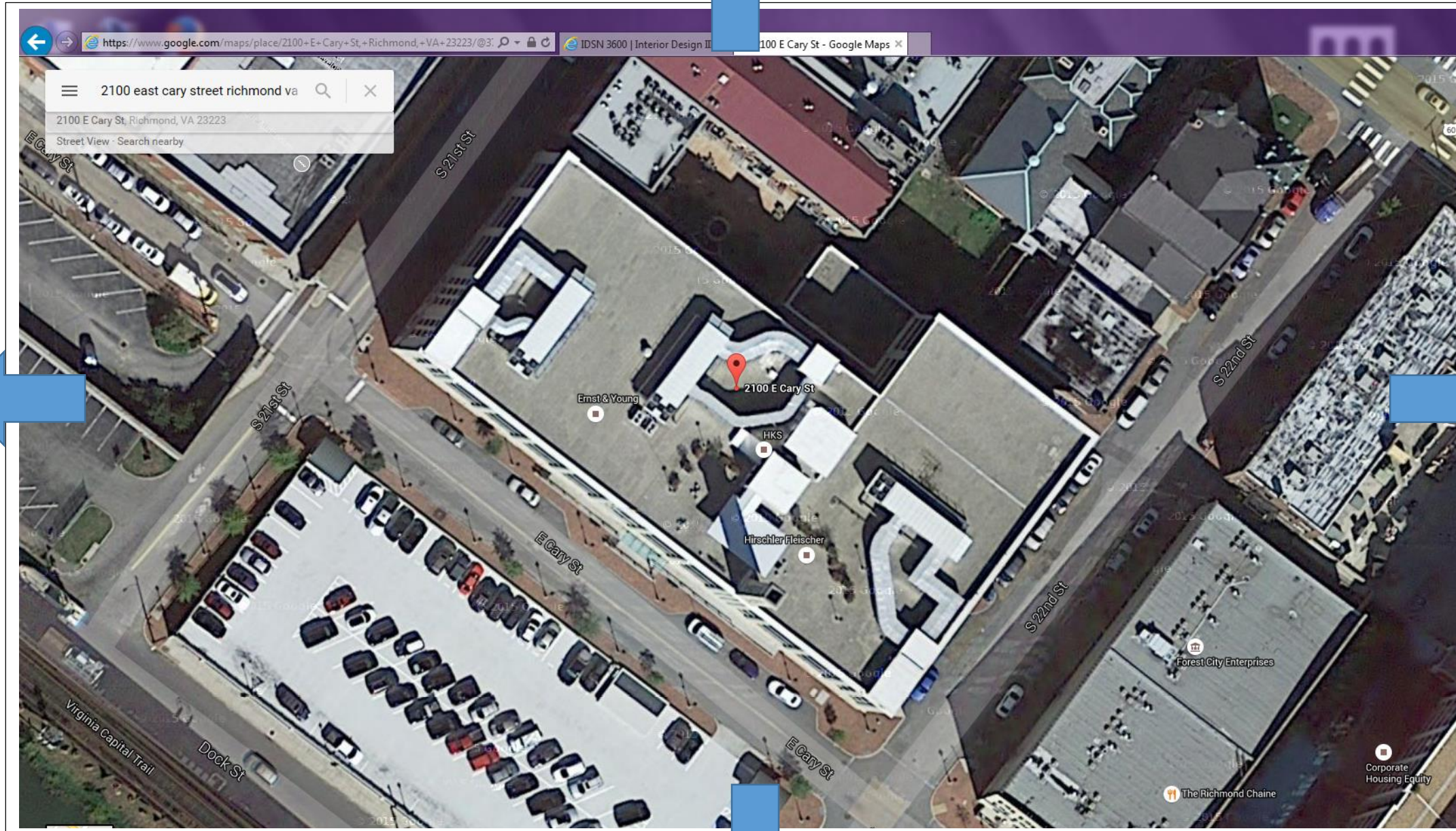
Department of Interior  
Design & Merchandising

College of Human  
Ecology

East Carolina University



North



West



South



IDSN 3600

Systems III

Professor Gustina

Assignment 5

Site Plan

Department of Interior  
Design & Merchandising

College of Human  
Ecology

East Carolina University



IDSN 3600

Systems III

Professor Gustina

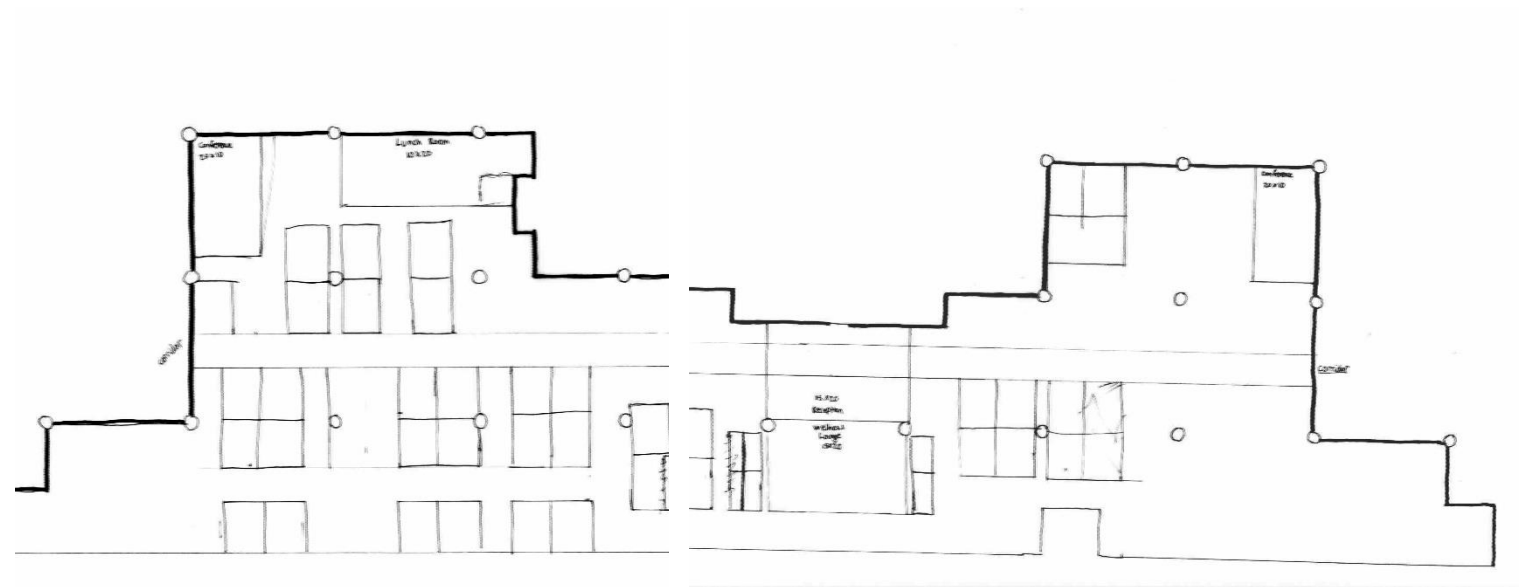
**Assignment 6**

Space Planning Sketches

Department of Interior  
Design & Merchandising

College of Human  
Ecology

East Carolina University



IDSN 3600

Systems III

Professor Gustina

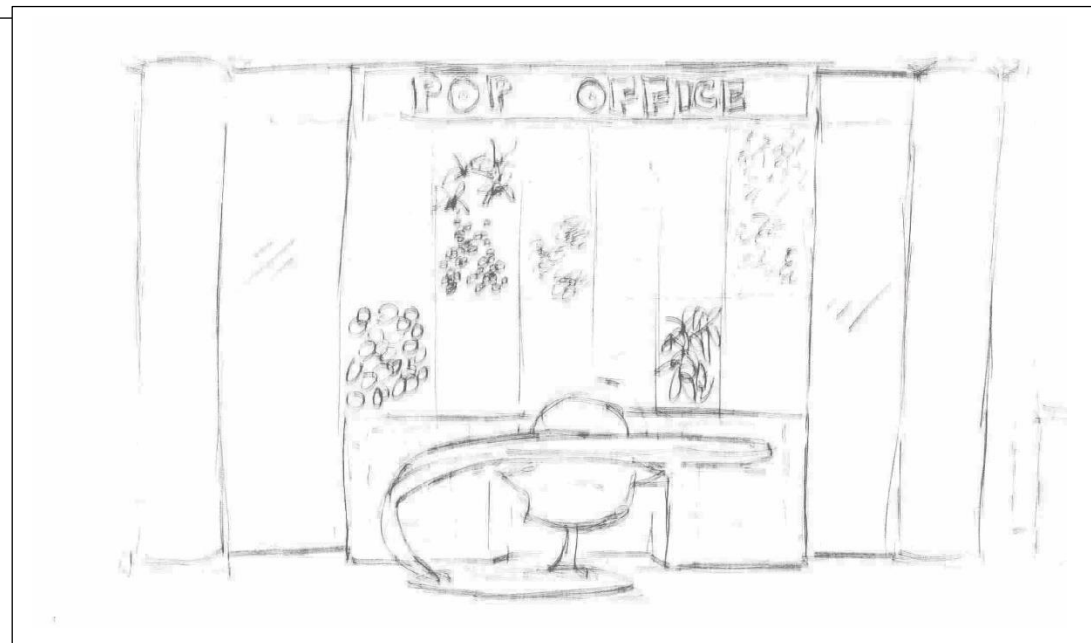
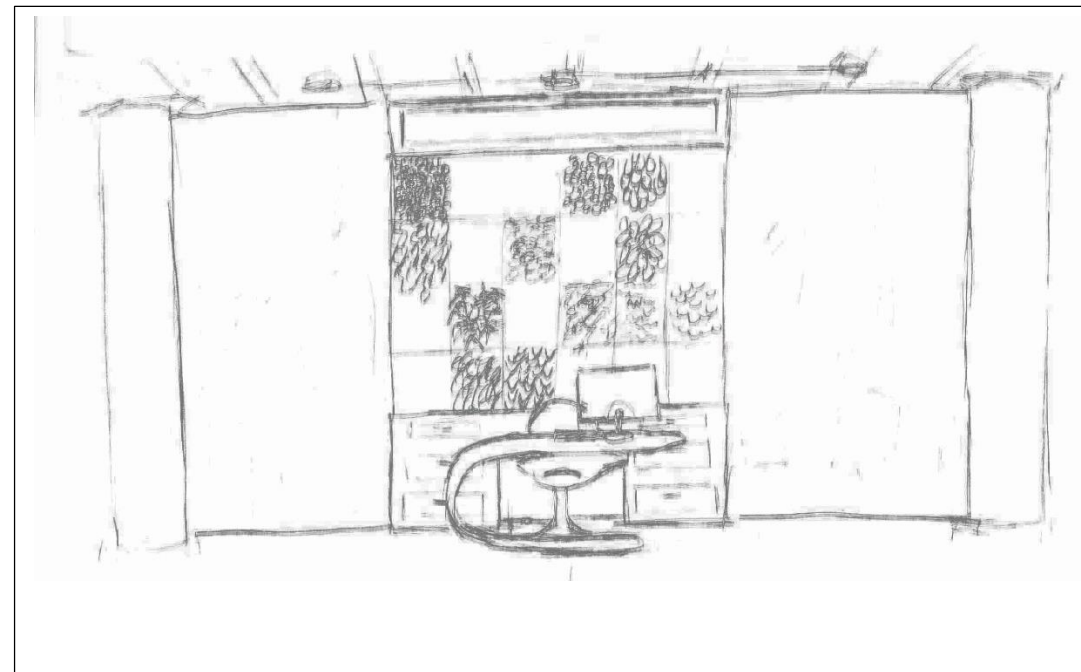
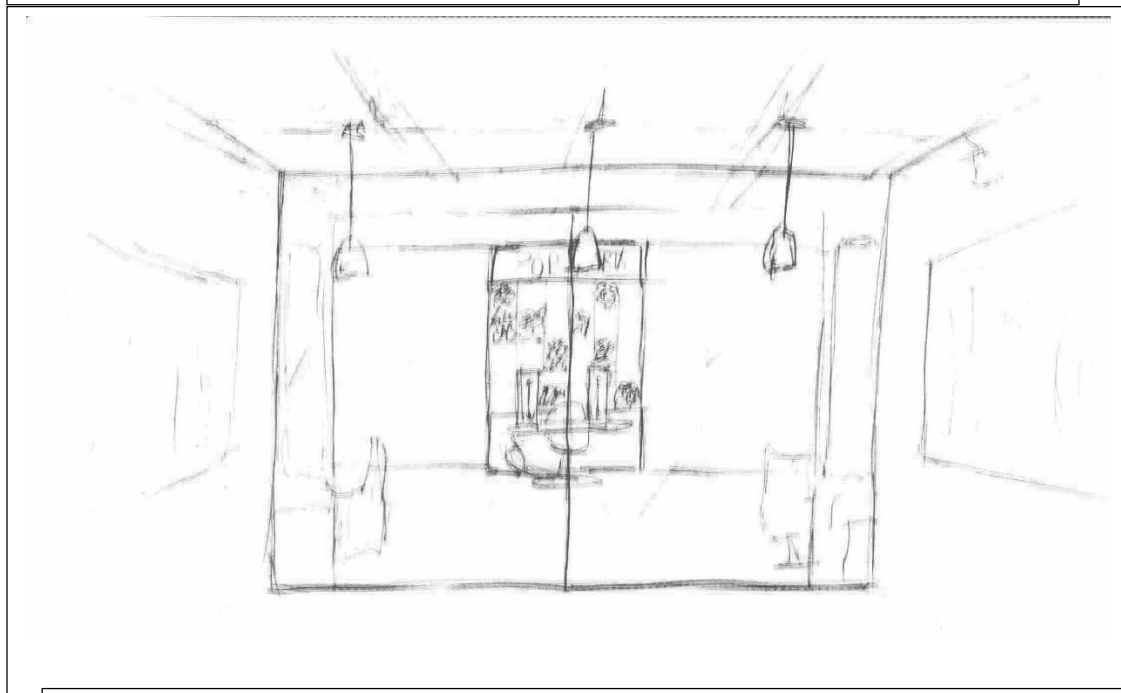
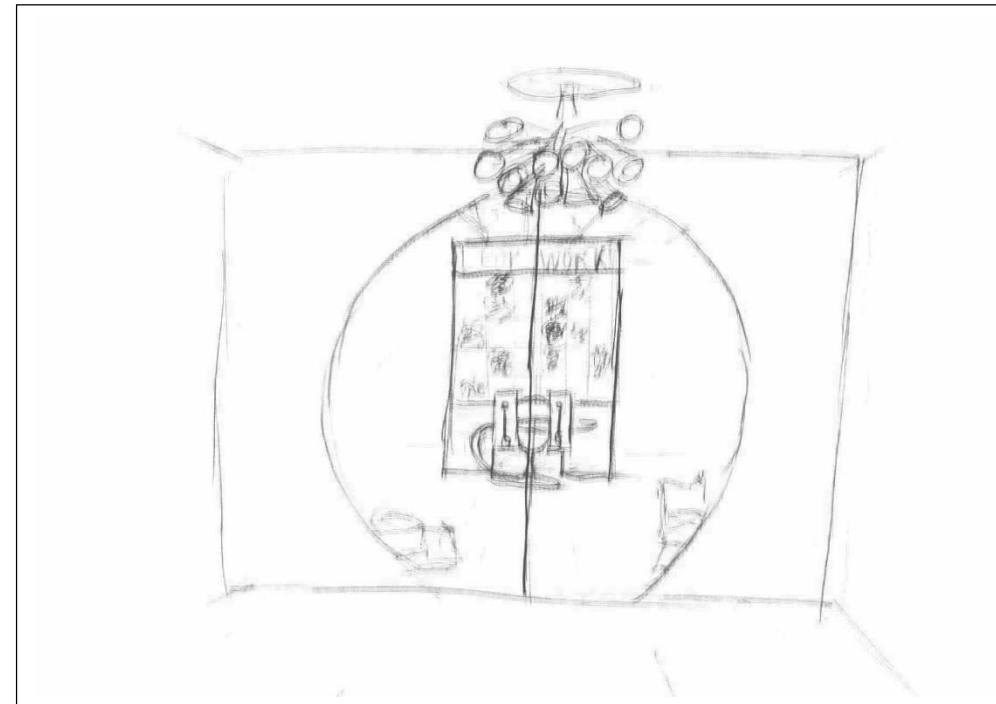
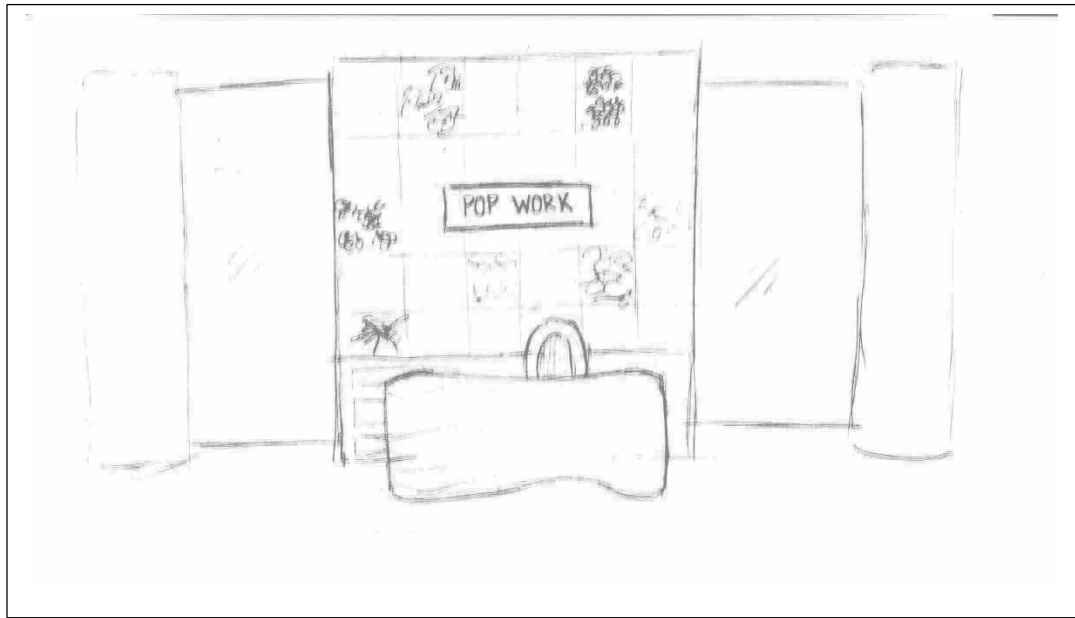
**Assignment 6**

Space Planning Sketches

Department of Interior  
Design & Merchandising

College of Human  
Ecology

East Carolina University



IDSN 3600

Systems III

Professor Gustina

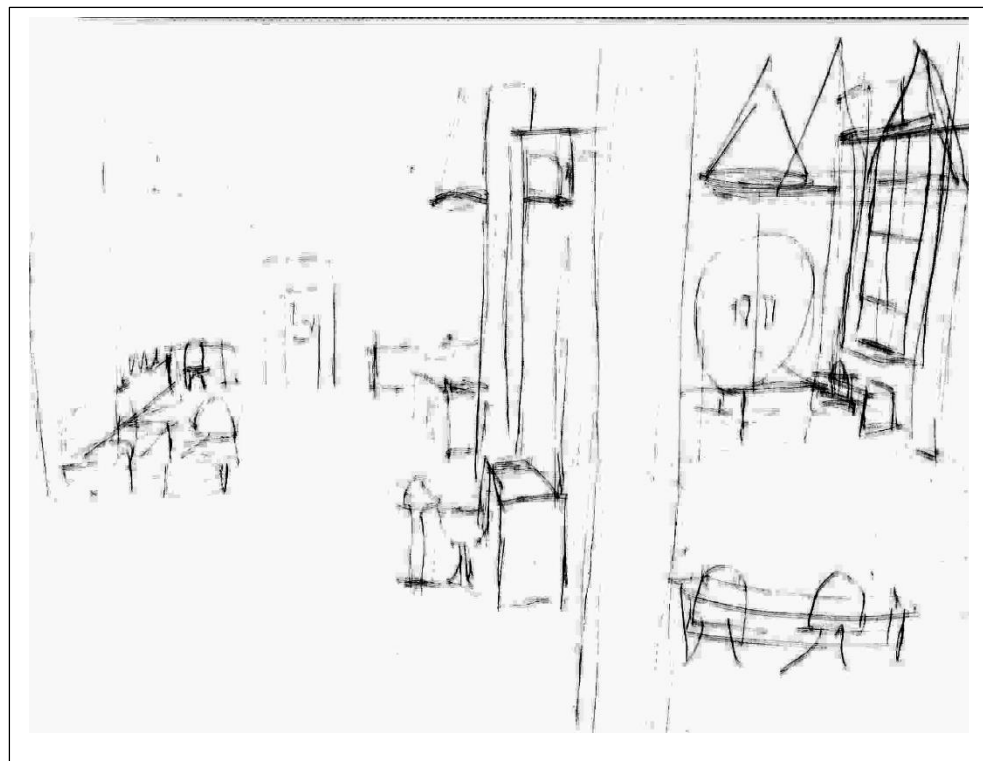
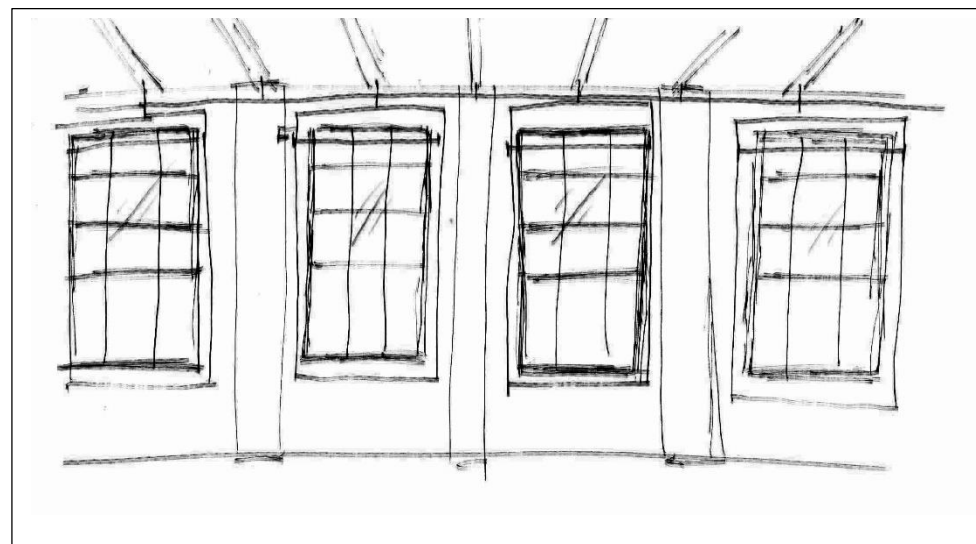
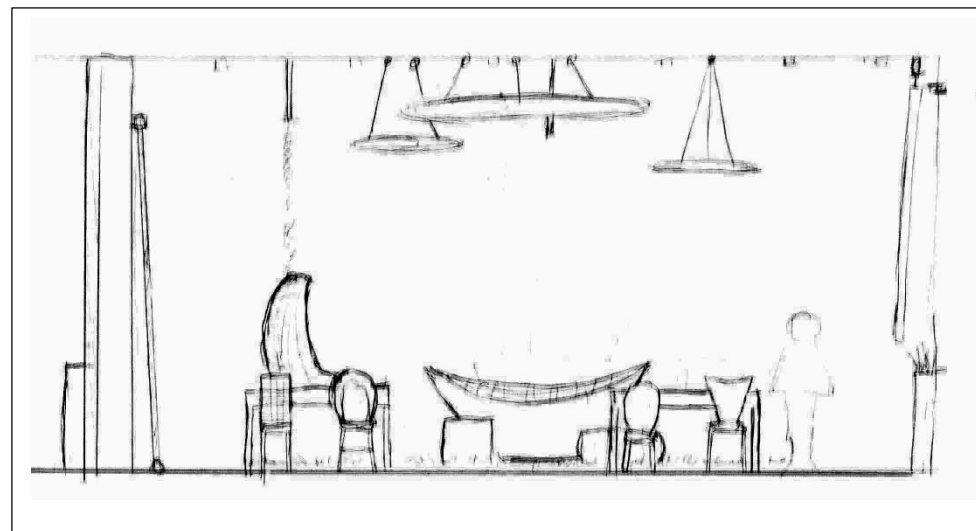
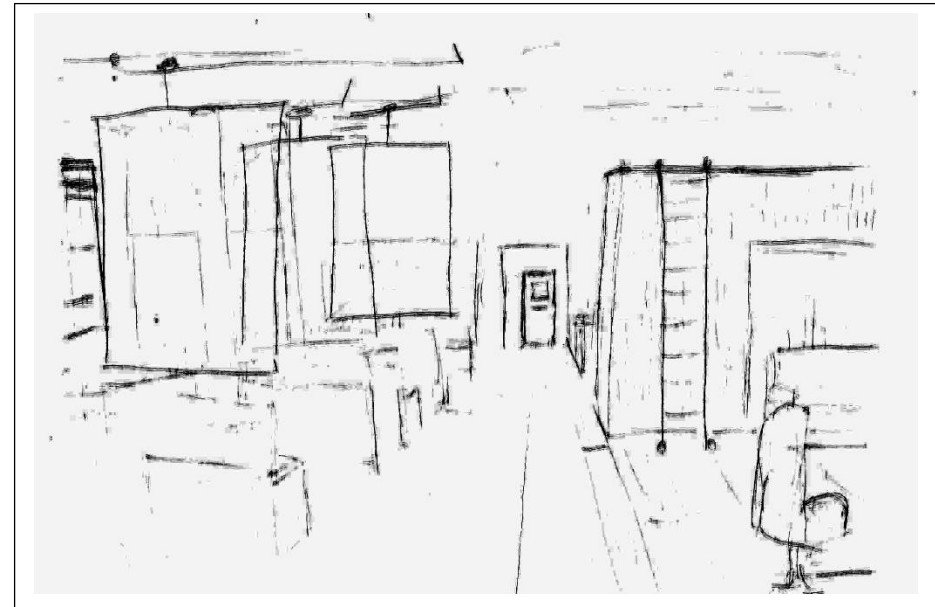
Assignment 7

Entry Sketches

Department of Interior  
Design & Merchandising

College of Human  
Ecology

East Carolina University



IDSN 3600

Systems III

Professor Gustina

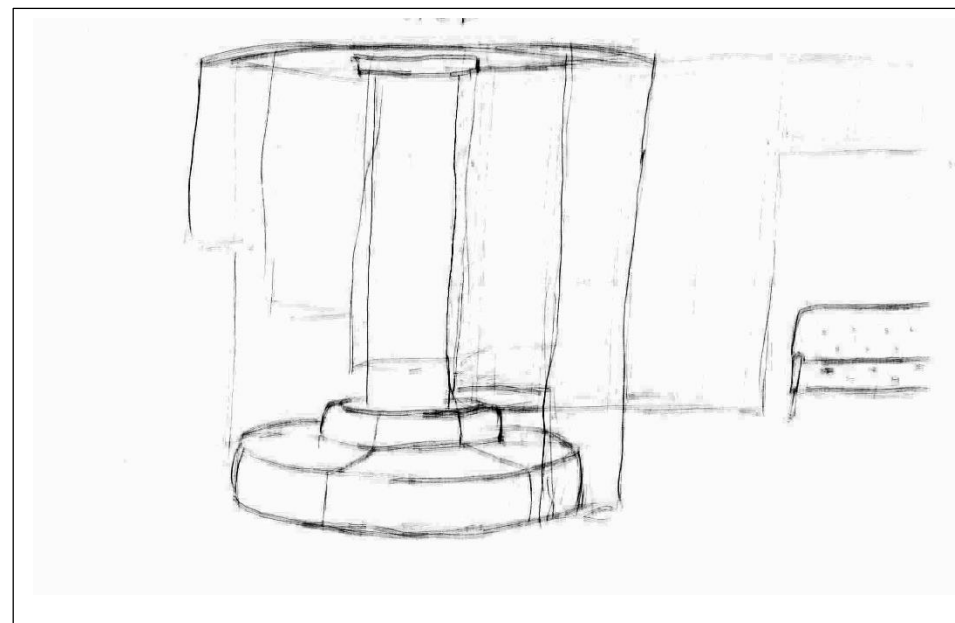
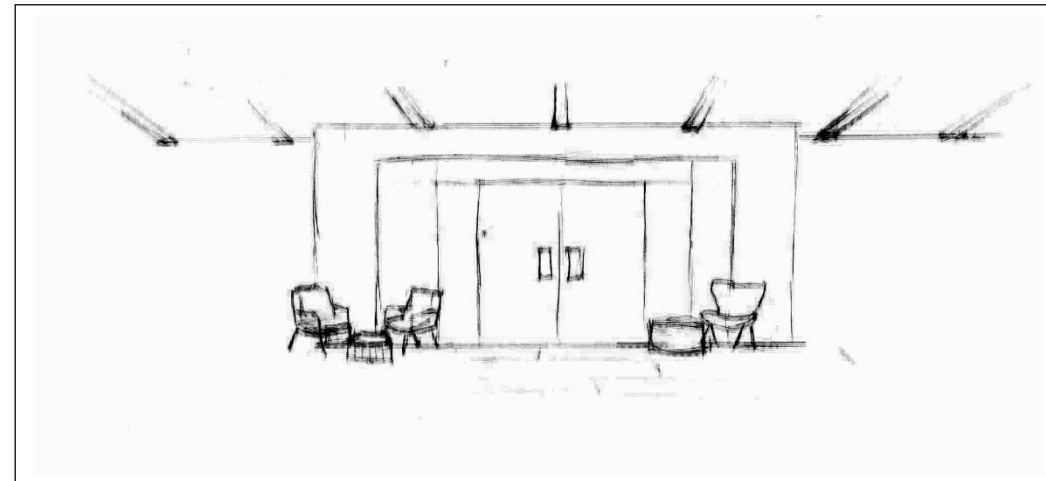
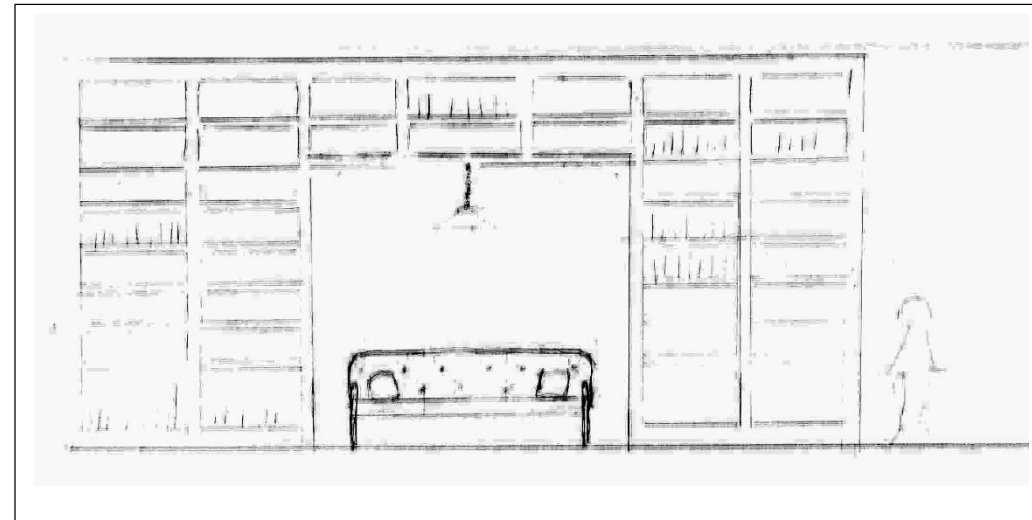
**Assignment 7**

Main Corridor Sketches

Department of Interior  
Design & Merchandising

College of Human  
Ecology

East Carolina University



IDSN 3600

Systems III

Professor Gustina

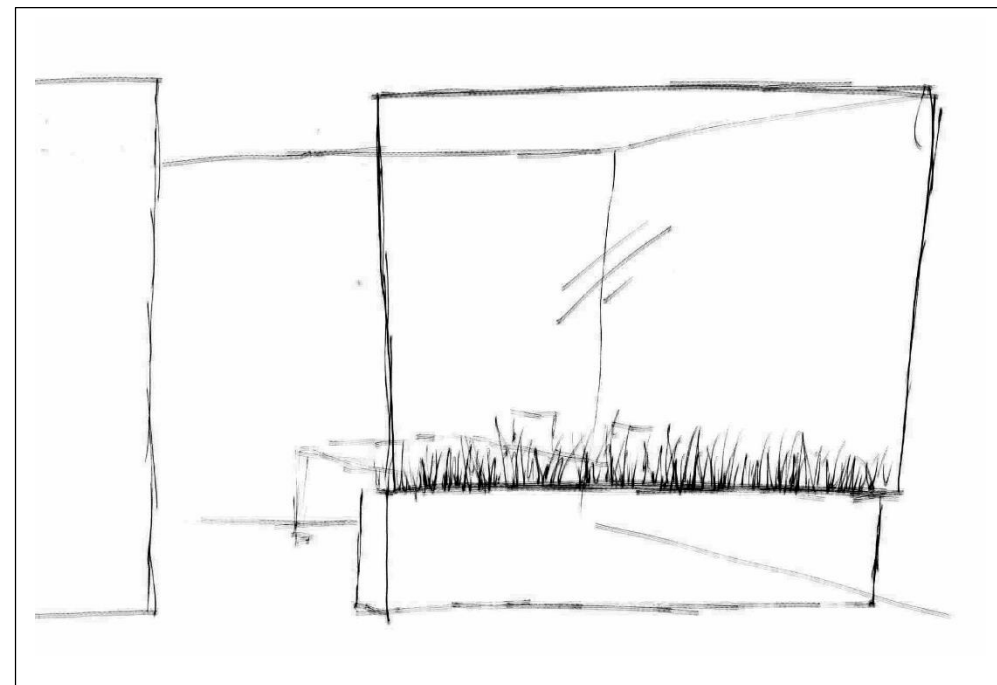
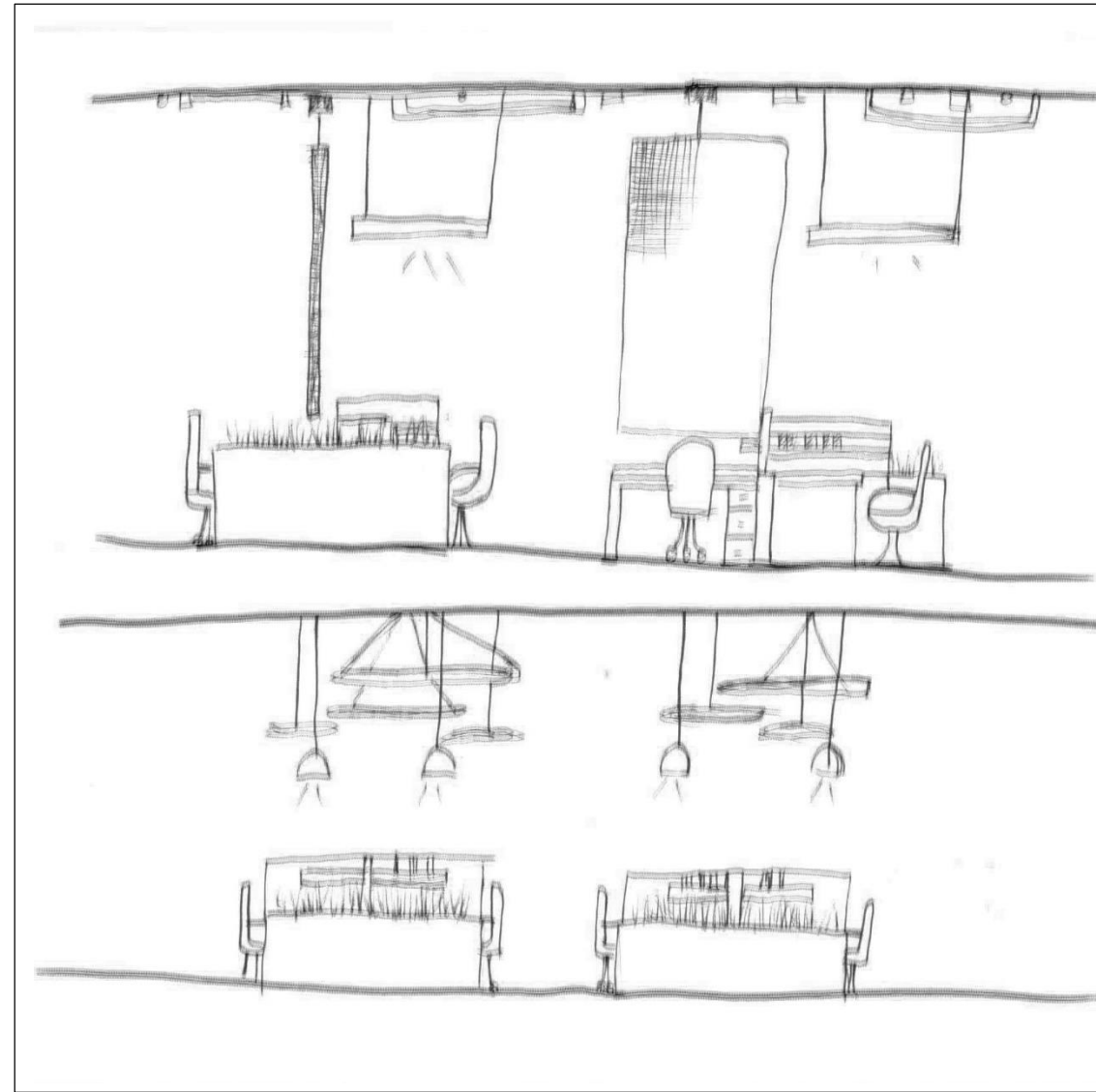
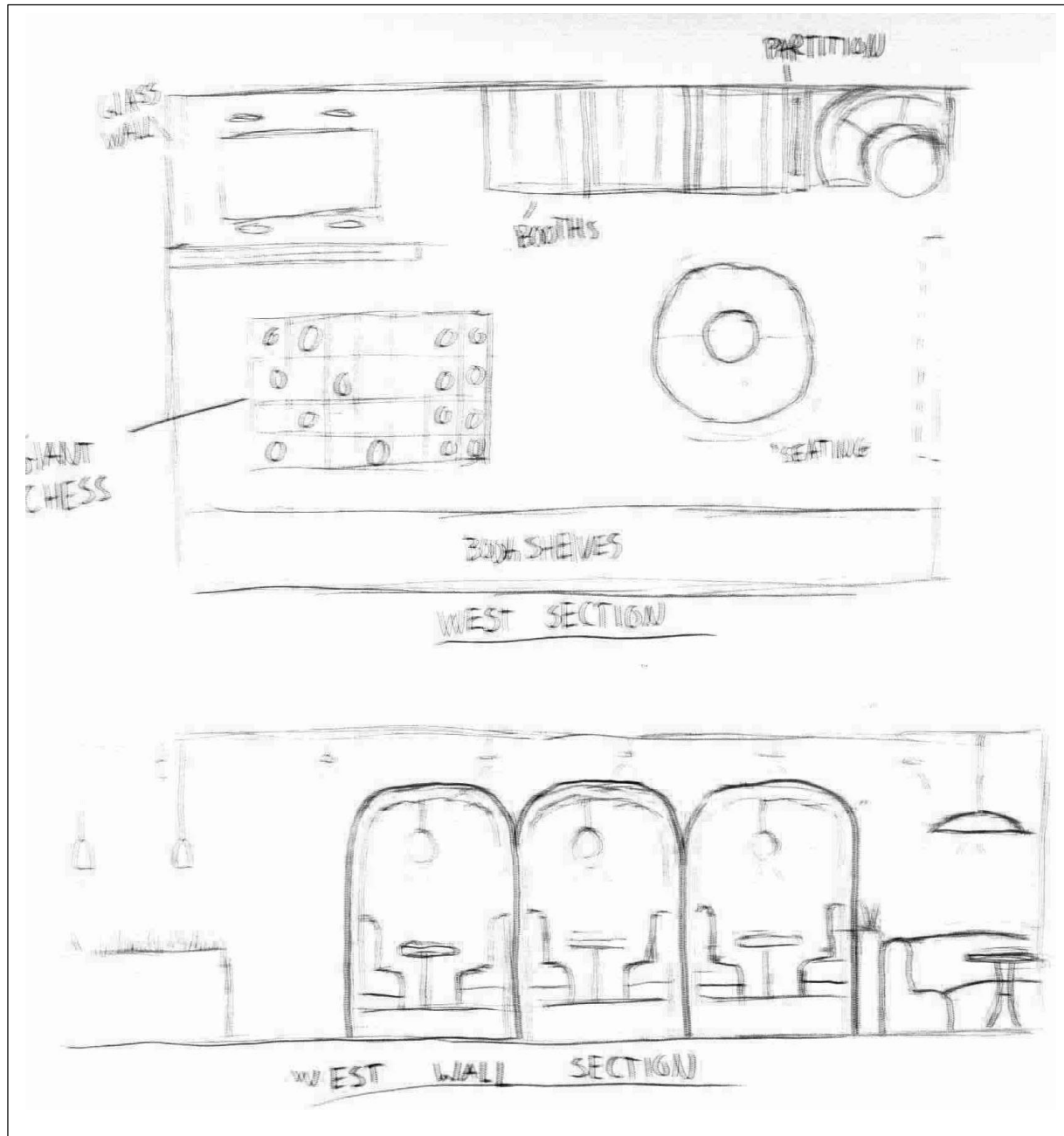
**Assignment 8**

Lounge Sketches

Department of Interior  
Design & Merchandising

College of Human  
Ecology

East Carolina University



IDSN 3600

Systems III

Professor Gustina

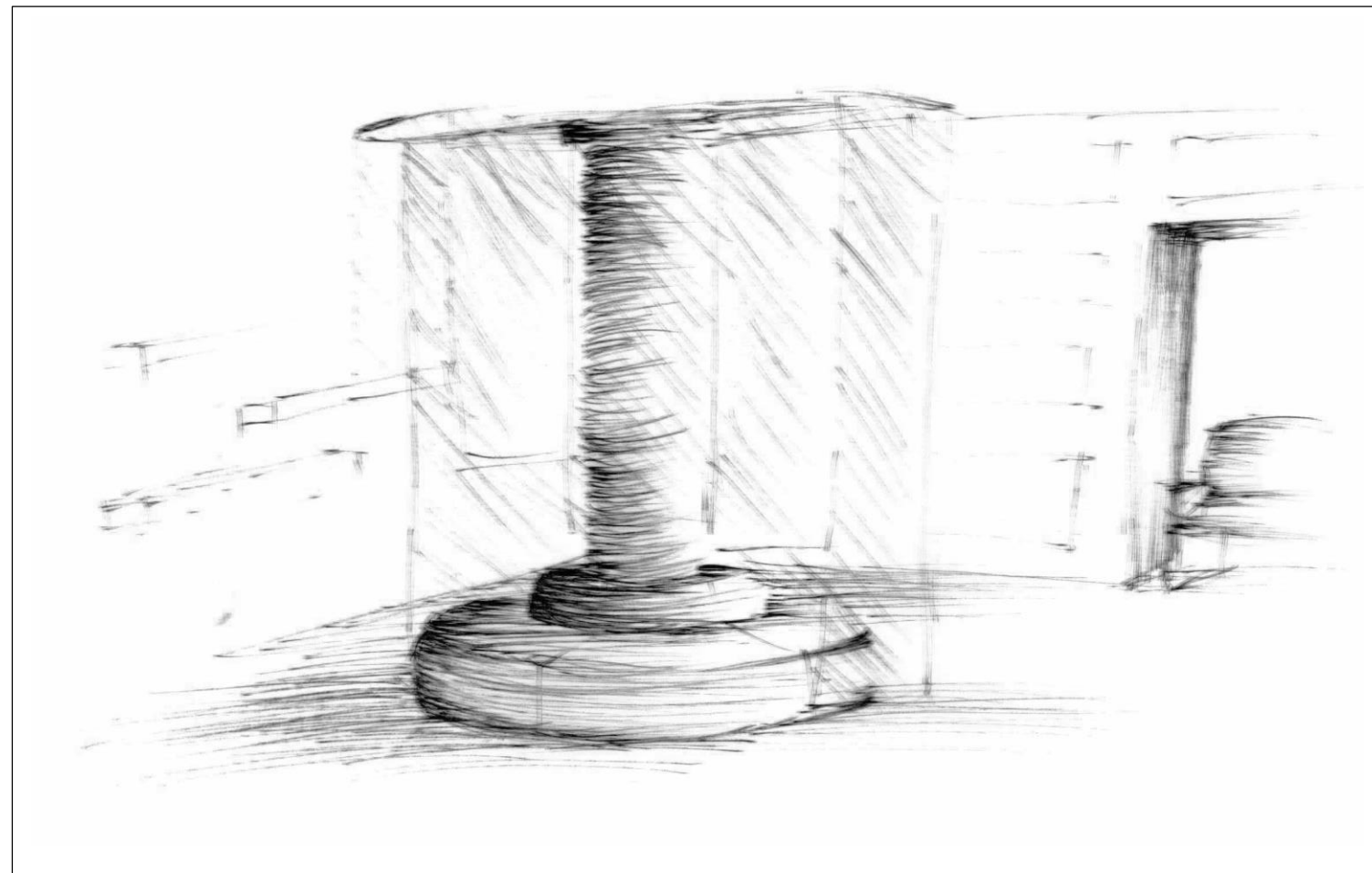
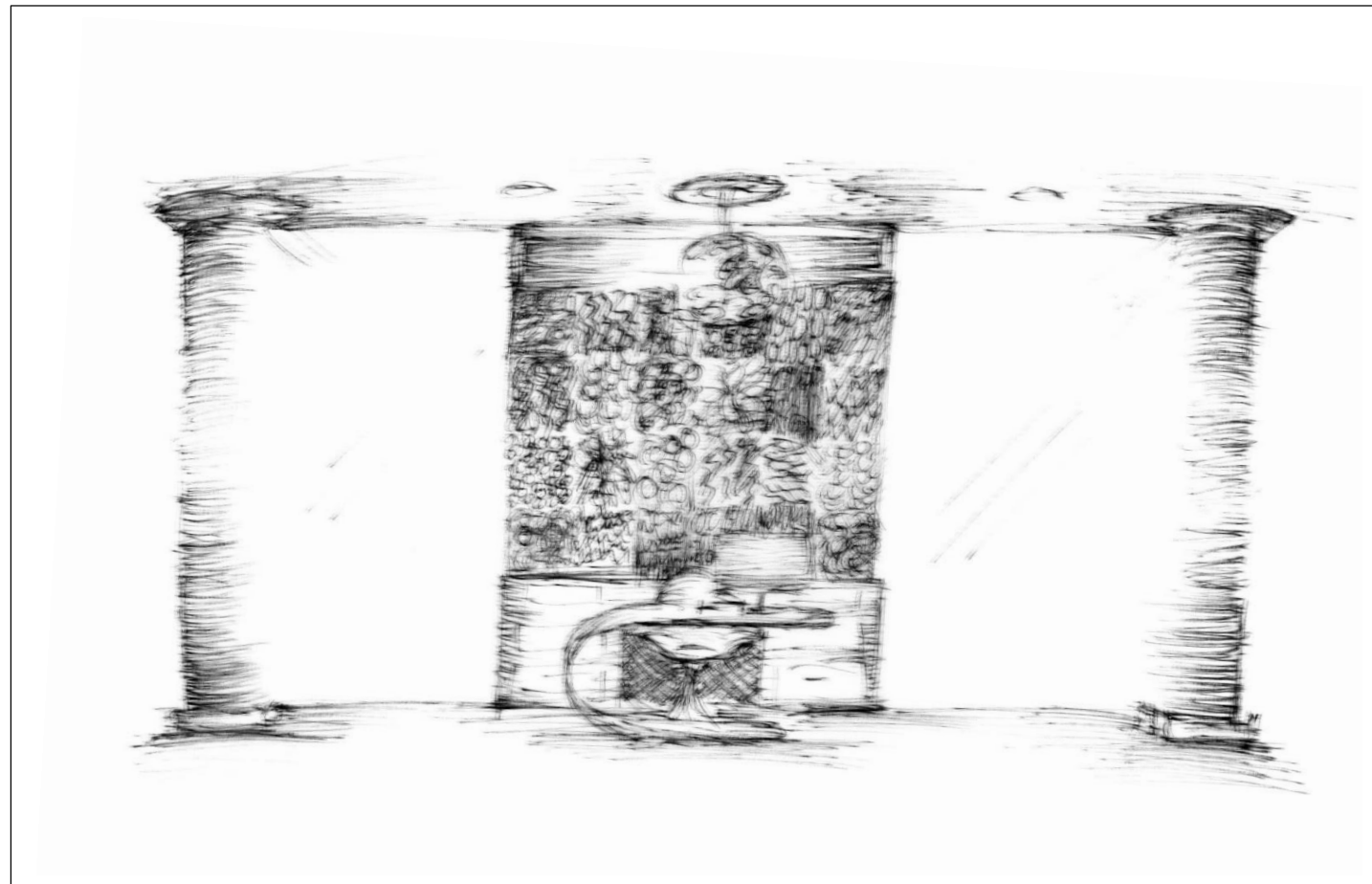
**Assignment 8**

Open Work Area Sketches

Department of Interior  
Design & Merchandising

College of Human  
Ecology

East Carolina University



IDSN 3600

Systems III

Professor Gustina

**Assignment 9**

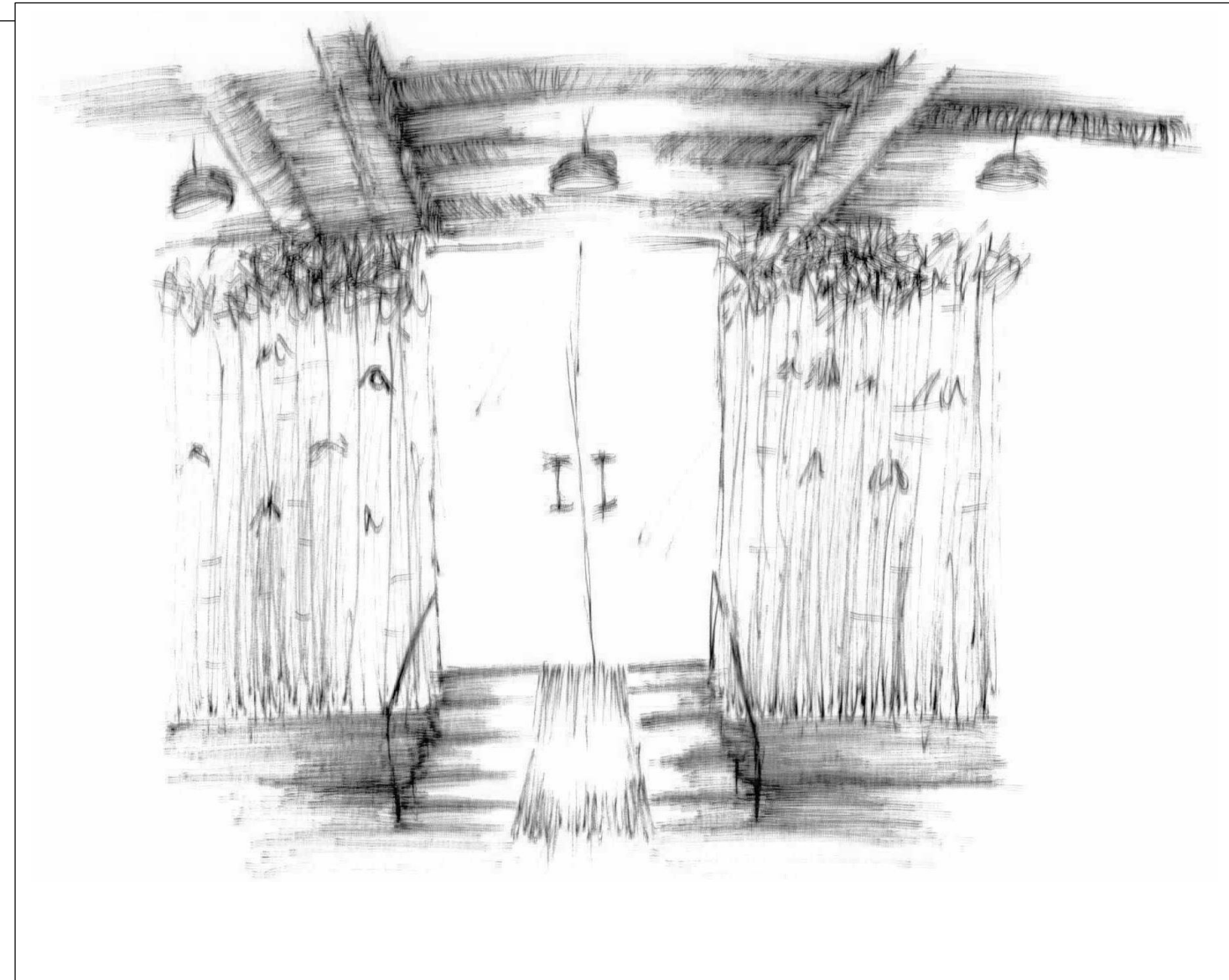
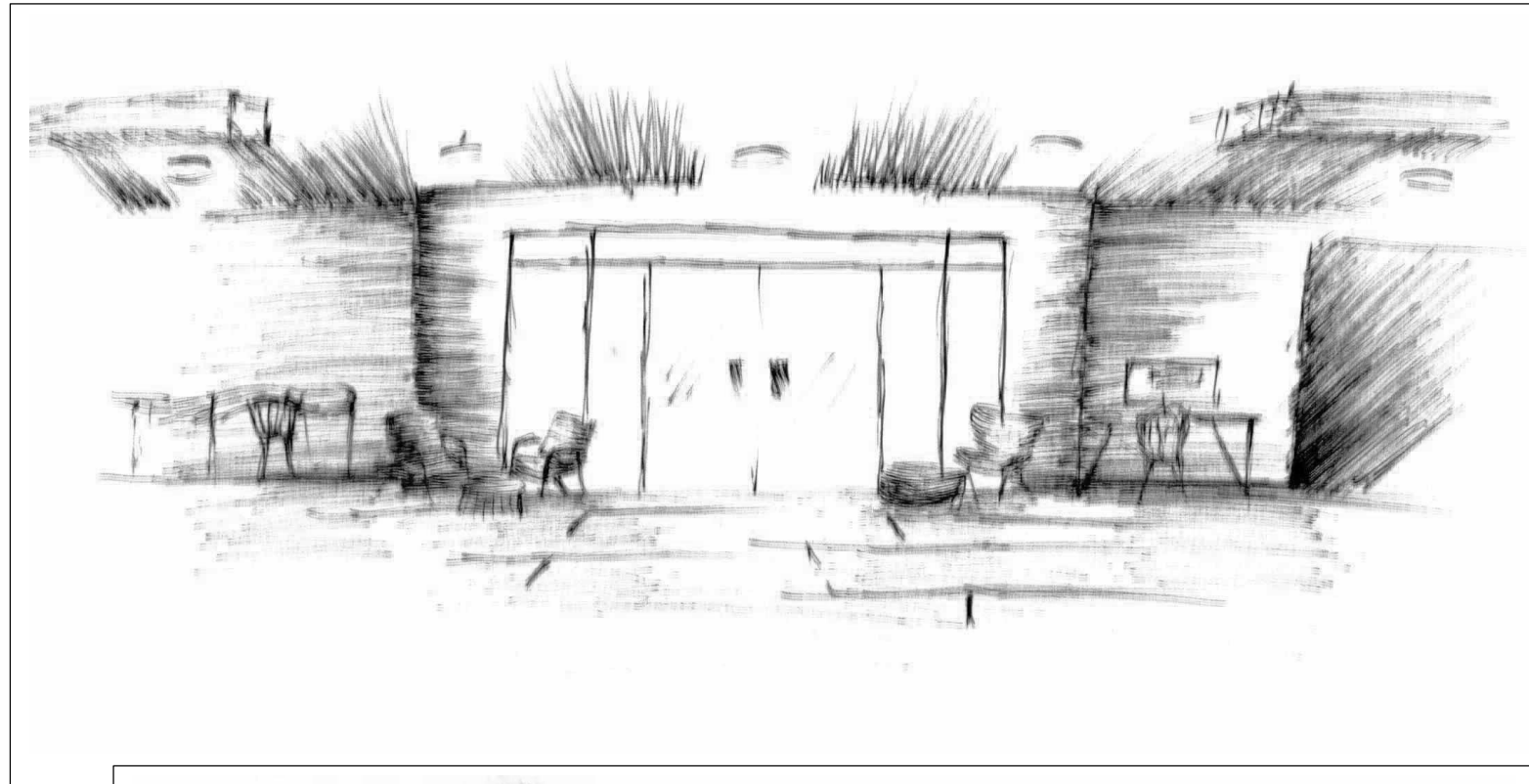
Lighting Sketches

Department of Interior  
Design & Merchandising

College of Human  
Ecology

East Carolina University





IDSN 3600

Systems III

Professor Gustina

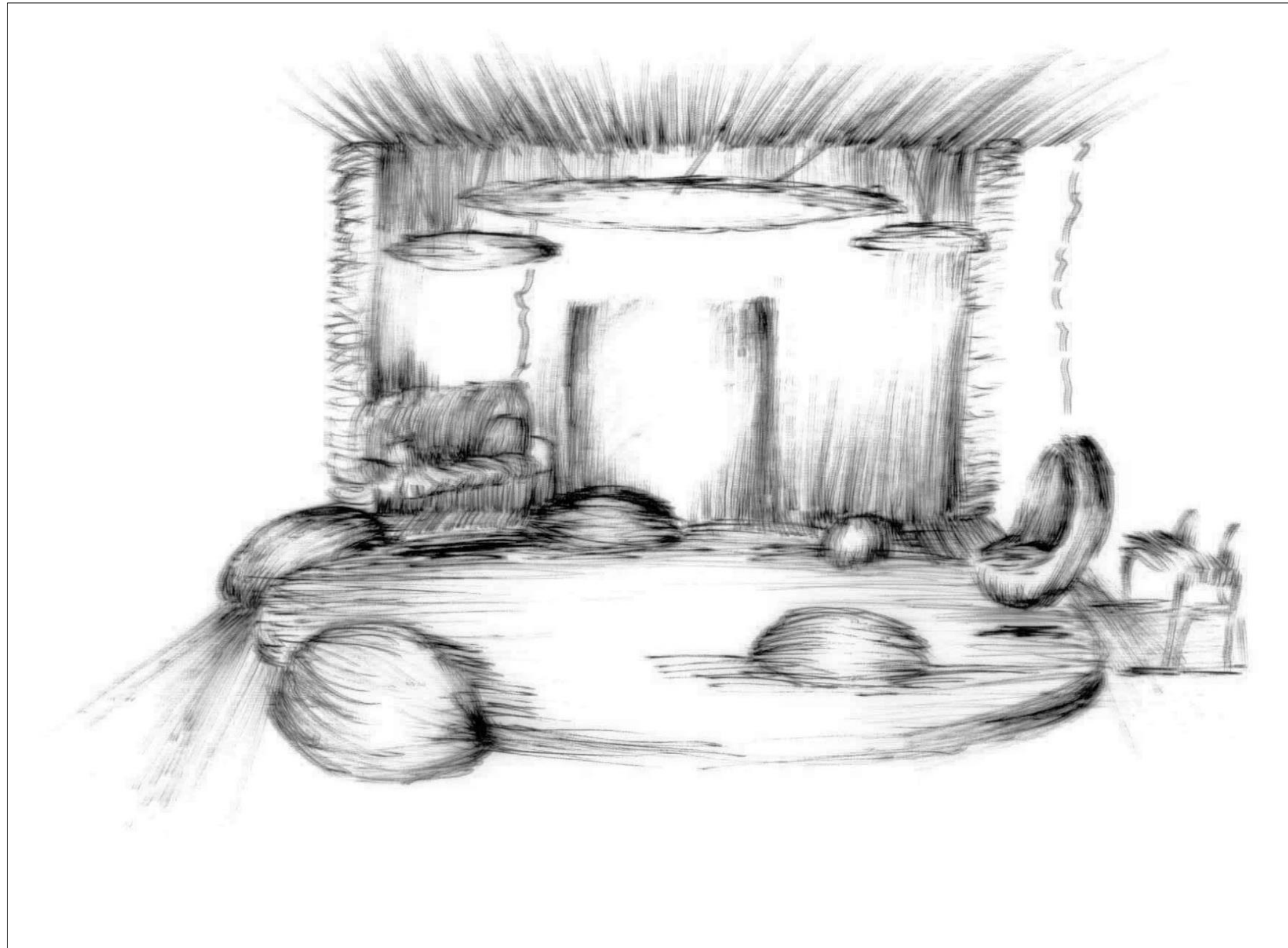
**Assignment 9**

Lighting Sketches

Department of Interior  
Design & Merchandising

College of Human  
Ecology

East Carolina University



IDSN 3600

Systems III

Professor Gustina

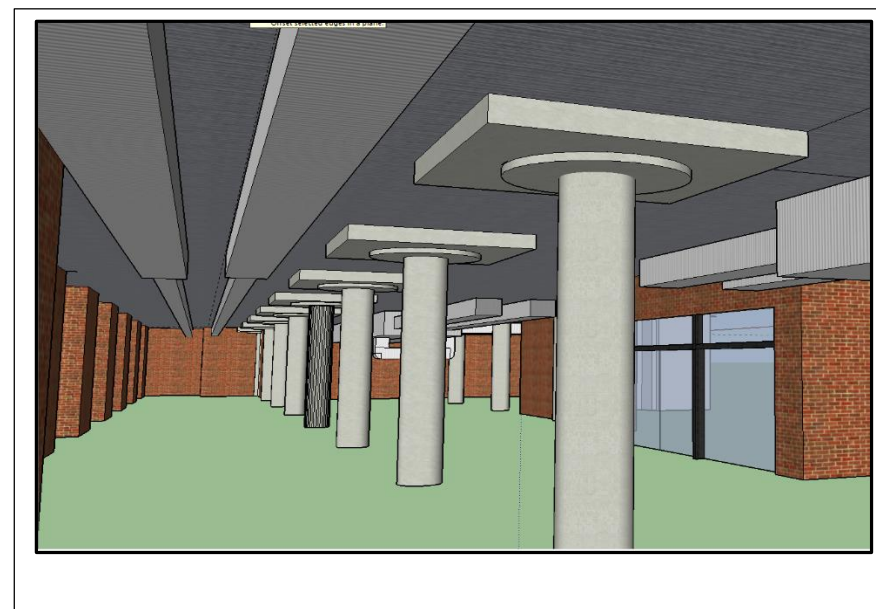
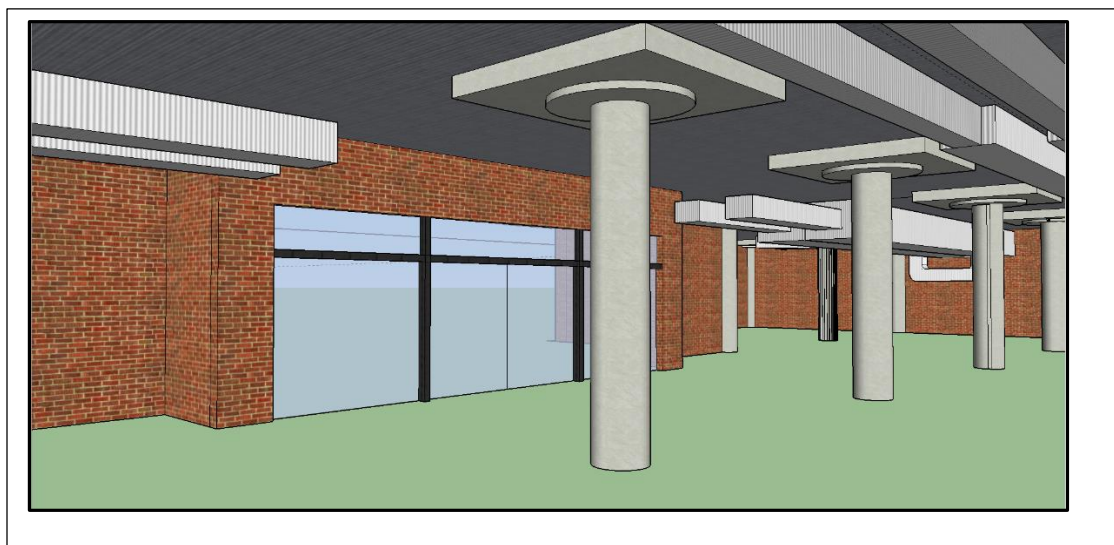
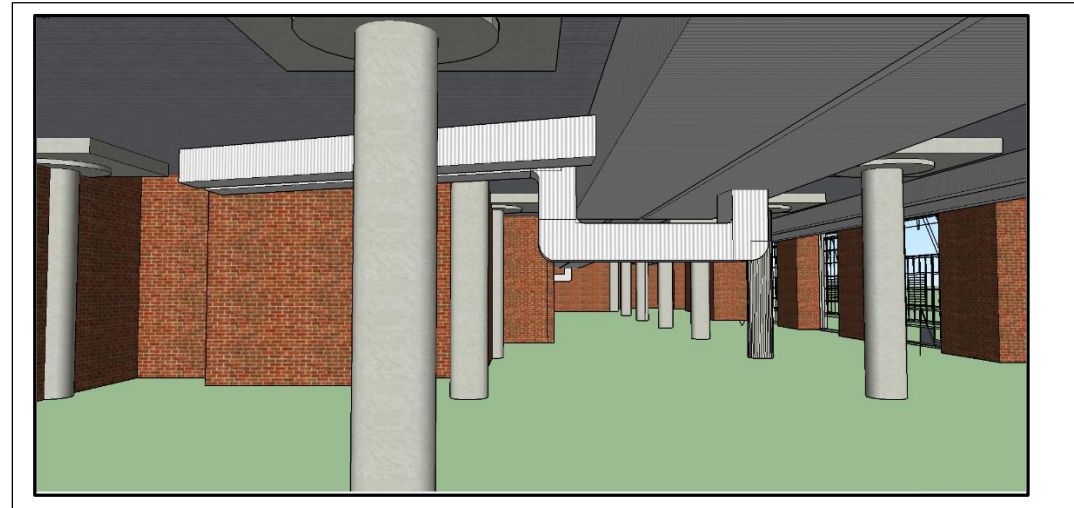
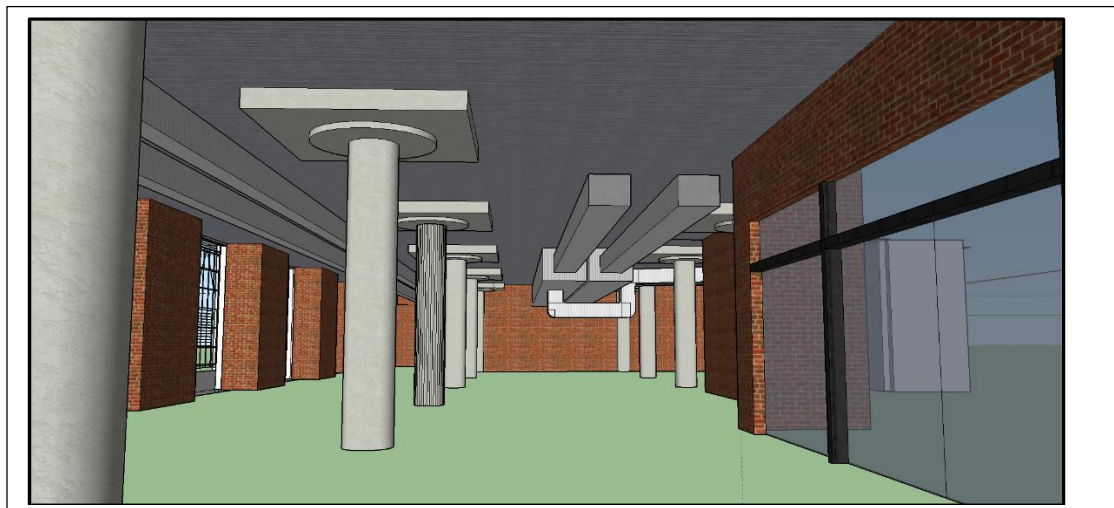
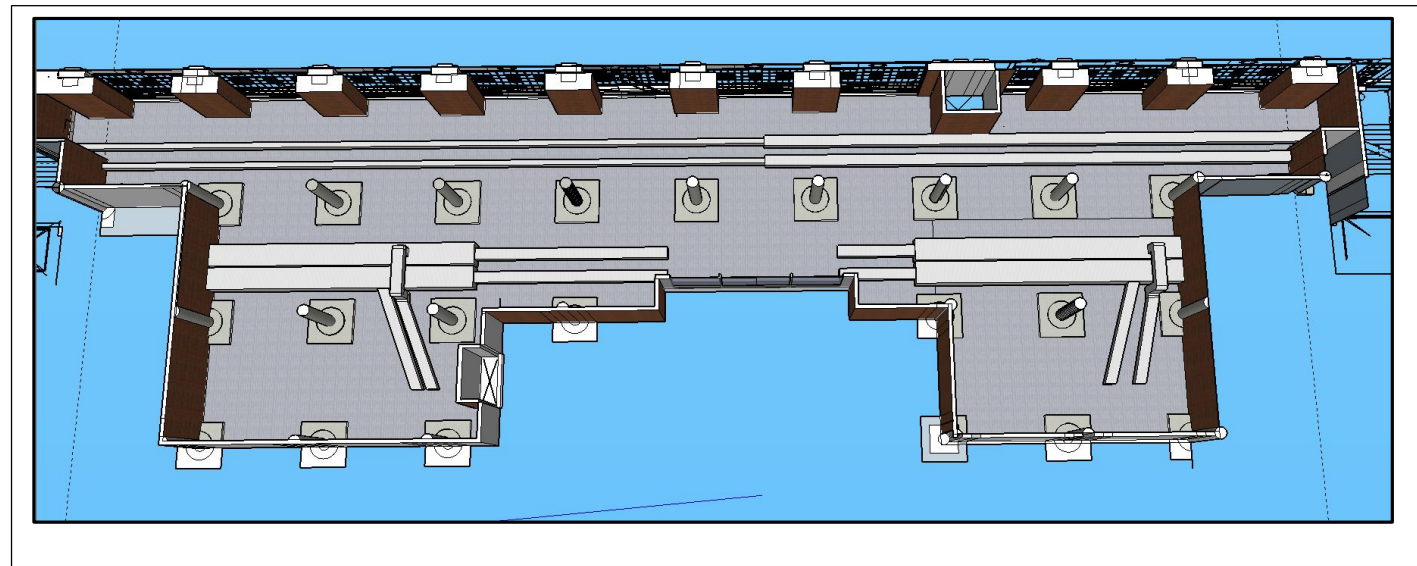
**Assignment 9**

Lighting Sketches

Department of Interior  
Design & Merchandising

College of Human  
Ecology

East Carolina University



IDSN 3600

Systems III

Professor Gustina

**Assignment 9**

Systems RCP

Department of Interior  
Design & Merchandising

College of Human  
Ecology

East Carolina University



IDSN 3600

Systems III

Professor Gustina

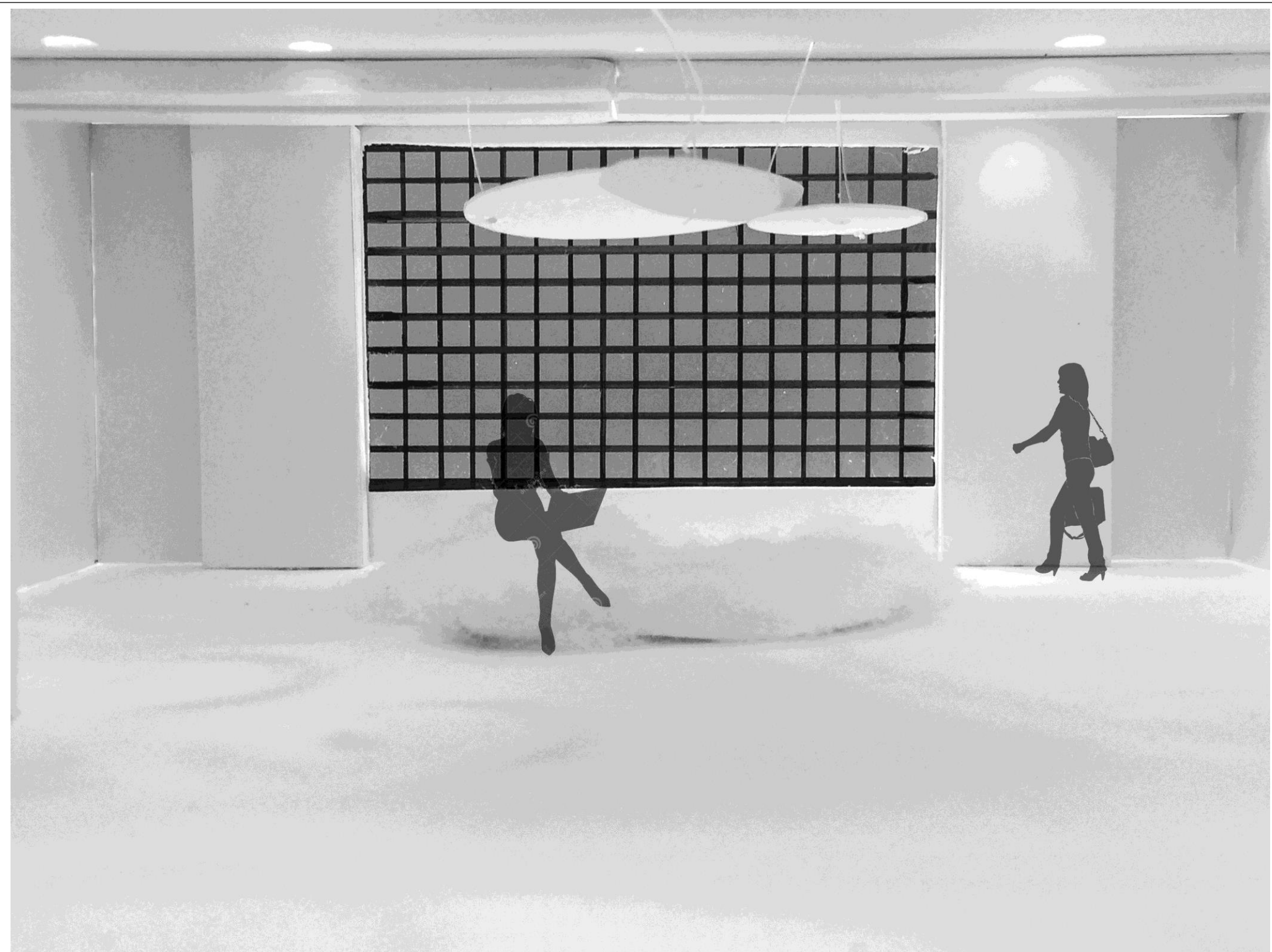
**Assignment 10**

Lighting Model

Department of Interior  
Design & Merchandising

College of Human  
Ecology

East Carolina University



IDSN 3600

Systems III

Professor Gustina

**Assignment 10**

Lighting Model

Department of Interior  
Design & Merchandising

College of Human  
Ecology

East Carolina University

IDSN 3600

Systems III

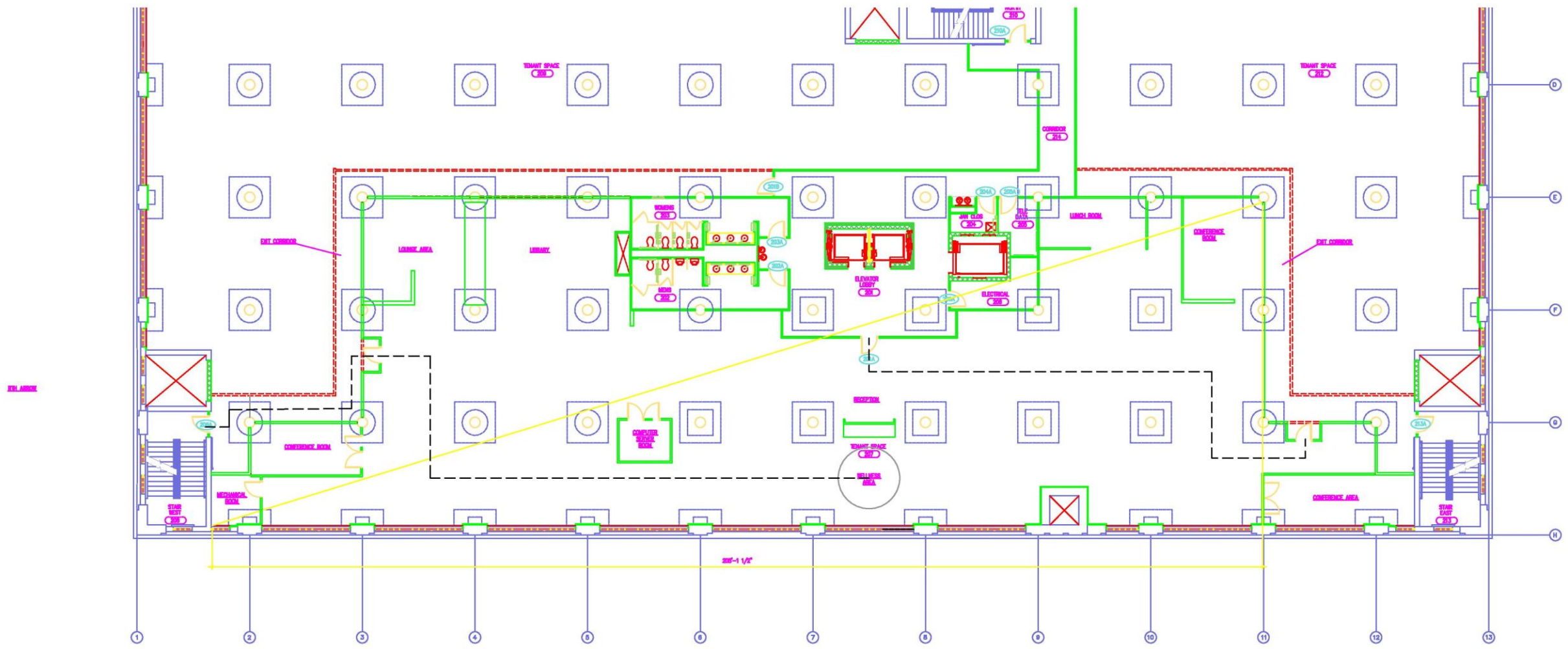
Professor Gustina

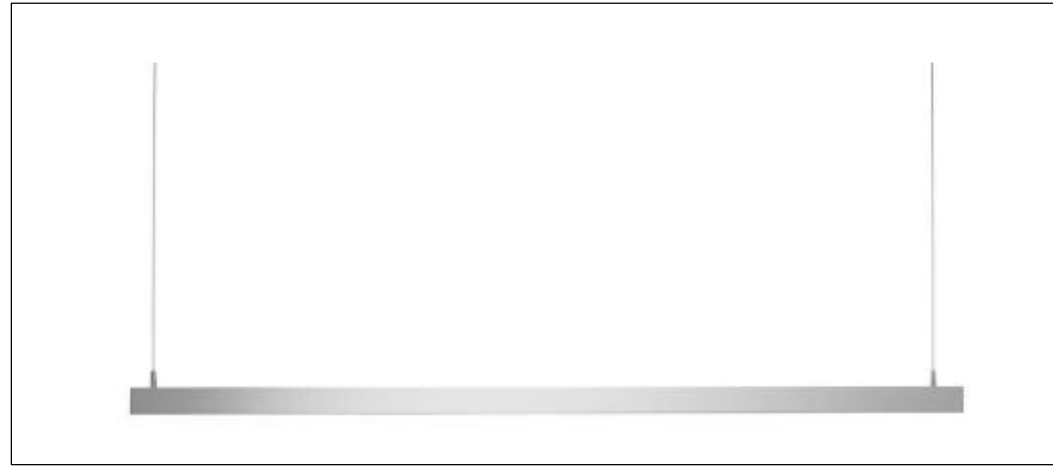
**Assignment 11**

Life Safety Table

Department of Interior  
 Design & Merchandising  
 College of Human  
 Ecology  
 East Carolina University

Building Construction and Occupancy									
Construction Type	Sprinklers?	Occupancy Type							
1A	Yes	Business							
Exit Requirements: Number and Arrangement of Exits									
Space Designation	# of Exits		Travel Distance		Arrangement: Means of Egress				
	Required	Shown on Plans	Allowable Distance	Actual Distance Shown on Plans	Req'd Distance Between Exits		Actual Distance Shown on Plans		
Suite 3100	2	3	300'-0"	115'-6"	102'-5"		110'-8"		
Notes:									
Use Group or Space Designation	(A)	(B)		©		Exit Width (Inches)			
	Area = Sq. Ft.	Area per Occupant	Calculated Occupant Load = A/B	Egress per Occupant		Required Width = (A/B)xC		Actual Width	
				Stair	Level	Stair	Level	Stair	Level
Suite 3100	10,200	100 SF Gross	102	.3"	.2"	30.6"	20.4"	56.25"	70"
Notes: Ivy Griggs IDSN 3600									





## LIGHTING ANALYSIS



$$\text{LLF} = \text{LLD} \times \text{LDD} = .65$$

$$\text{LLD} = .93$$

$$\text{LDD} = .7$$

$$\text{RCR} = \frac{5(H)(L+W)}{(L)(W)} = 13.05$$

$$\frac{(\# \text{ of Lamps})(\text{Initial Lamp Lumens})\text{LLF}(\text{CU})}{\text{Area}} = \frac{(4)(3475)(.65)(12)}{(80)} = 1,355.25$$

IDSN 3600

Systems III

Professor Gustina

**Assignment II**

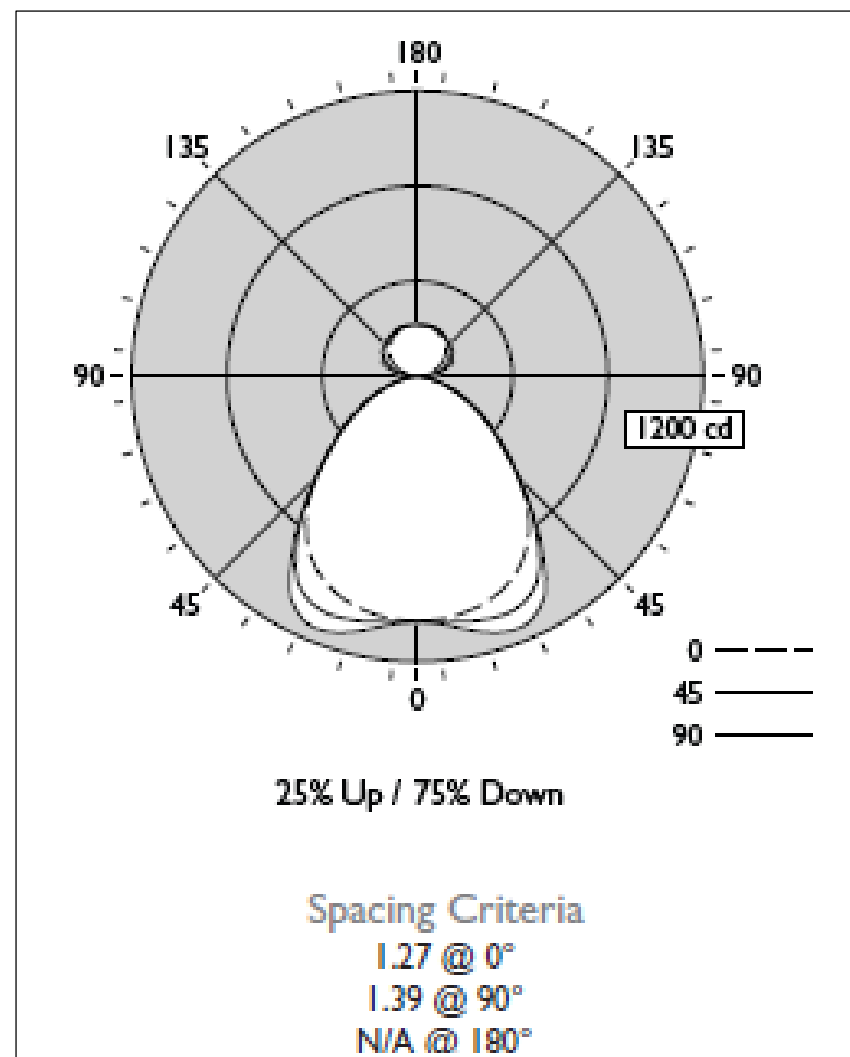
Lighting Analysis

Department of Interior  
Design & Merchandising

College of Human  
Ecology

East Carolina University





**Candela Distribution**

Vertical Angle	Horizontal Angle					Zonal Lumens
	0	22.5	45	67.5	90	
0	1030	1030	1030	1030	1030	
5	1027	1030	1036	1039	1043	99
15	1001	1021	1061	1097	1115	300
25	939	983	1053	1117	1133	481
35	814	861	889	946	920	553
45	601	634	613	623	602	476
55	389	402	375	393	380	349
65	224	233	214	237	224	224
75	98	103	94	103	96	105
85	13	18	14	18	14	21
90	0	0	0	0	0	
95	17	24	40	39	50	37
105	60	81	111	120	125	104
115	103	117	143	154	162	135
125	139	150	167	179	182	146
135	166	173	187	193	192	141
145	188	193	200	205	202	124
155	203	205	214	215	212	97
165	214	215	218	220	218	61
175	217	217	217	216	216	21
180	216	216	216	216	216	

Coefficients of Utilization (%)											Avg. Luminance (cd/m <sup>2</sup> )					
Ceiling:	80				70				50			0	Vertical Angle	Horizontal Angle		
	70	50	30	10	70	50	30	50	30	10	0	0		45	90	
0 RCR	67	67	67	67	63	63	63	57	57	57	44	55	6286	6071	6152	
1	61	59	57	55	58	56	54	51	50	48	38	65	4921	4697	4912	
2	56	52	49	46	54	50	47	45	43	41	33	75	3516	3376	3437	
3	52	46	42	39	49	44	40	40	37	35	28	85	1405	1522	1437	
4	48	41	37	33	45	40	35	36	33	30	25					
5	44	37	32	29	42	36	31	33	29	26	22					
6	41	33	29	25	39	32	28	30	26	23	19					
7	38	30	26	22	36	29	25	27	23	21	17					
8	35	28	23	20	33	27	22	25	21	19	15					
9	33	25	21	18	31	25	20	23	19	17	14					
10	31	23	19	16	29	23	19	21	18	15	13					

\*Based on a floor reflectance of 0.2

IES files for this and other photometric options can be downloaded online at [ledalite.com](http://ledalite.com)

IDSN 3600

Systems III

Professor Gustina

Assignment II

Lighting Analysis

Department of Interior Design & Merchandising

College of Human Ecology

East Carolina University