

[SYSTEMS COMPILATION PORTFOLIO 1]

IDSN 3600 EAST CAROLINA UNIVERSITY

MARECK, CINDY



Personnel Totals Per Department	Personnel Totals		Personnel				Support	Total	Circulation	Carpetable
	Current	Future	Sq. Feet	Computer	Printer	Fax	Sq. Feet	Sq. Feet		Sq. Feet
Executive	2	9	500	9	1	-	209	709	1.54	1,092
Administration	2	14	569	4	1	-	114	683	1.54	1,052
Account Admin	6	32	1,368	41	10	10	188	1,556	1.54	2,396
Creative Services	4	41	1,606	7	1	-	660	2,266	1.54	3,490
Support		-	-	-	-	-	1,412	1,412	1.54	2,174
Totals:	14	96	4,043	61	13	10	2,583			10,204

PROGRAM



PERSONNEL									
Position	Personnel Totals		Unit Square Ft.		Extended Sq. Feet	Equipment			Notes
	Current	Future	Office	Workstation		PC	Printer	Fax	
					0				
					0				
					0				
Director	1	4	80		320	4			Locate near Reception
					0				
					0				
Administrative Assistant	1	5		36	180	5	1		Locate directly outside Mgr office
					0				
					0				
					0				
Personnel Totals:	2	9			500	9	1	0	

SUPPORT/EQUIPMENT SPACES									
Space	Support/Equipment		Unit Square Feet	Extended Sq. Feet	Location	Notes			
	Current	Future							
				0					
Waiting Area	0	0	0	0	Visible from Admin Asst	Seating for 4 guests			
				0					
Pantry	0	1	49	49	Near Admin Assts				
				0					
Fax/Copy	0	1	49	49	Near Admin Assts				
				0					
Storage	1	1	81	81		Shelving			
				0					
File Drawers	50	15	2	30		3-Hi cabinets			
				0					
Executive Conference Room	0	0	0	0	Adjacent to Waiting Area	Full AV			
				0					
Support Totals:				209					

Department Summary Information:	
Personnel	500 Square Ft.
Equipment	209 Square Ft.
Sub Total:	709 Square Ft.
Circulation	1.54
Total Carpetable:	1092 Square Ft.

Interviewee:
 Interview Date:
 Revision Submitted:
 Sign Off:

Department Notes:
 Entire company is progressive
 Space is attractive



PERSONNEL									
Position	Personnel Totals		Unit Square Ft.		Extended Sq. Feet	Equipment			Notes
	Current	Future	Office	Workstation		PC	Printer	Fax	
Finance					0				
Manager	0	5		43	245	1			
Clerical	2	9		36	324	3	1		
					0				
					0				
					0				
					0				
					0				
					0				
					0				
					0				
Personnel Totals:	2	14			569	4	1	0	

Department Summary Information:	
Personnel	569 Square Ft.
Equipment	114 Square Ft.
Sub Total:	683 Square Ft.
Circulation	154
Total Carpetable:	1052 Square Ft.

Interviewee:
 Interview Date:
 Revision Submitted:
 Sign Off:

SUPPORT/EQUIPMENT SPACES						
Space	Support/Equipment		Unit Square Feet	Extended Sq. Feet	Location	Notes
	Current	Future				
Finance				0		
File Drawers	50	20	18	36	Lockable room	5-Hi cabinets
Equipment	1	1	78	78	Next to work area	3 Printers, shredder, work counter
				0		
				0		
				0		
				0		
				0		
				0		
				0		
				0		
Support Totals:				114		

Department Notes:



PERSONNEL									
Position	Personnel Totals		Unit Square Ft.		Extended Sg. Feet	Equipment			Notes
	Current	Future	Office	Workstation		PC	Printer	Fax	
Account Executive	4	4	64		256	9			
Account Manager	4	8	49		392	12			
Administrative Assistant	1	10		36	360	10	10	10	Shared by entire Production staff
Account Assistant	3	10		36	360	10			
					0				
					0				
					0				
					0				
					0				
					0				
Personnel Totals:	12	32			1368	41	10	10	

SUPPORT/EQUIPMENT SPACES									
Space	Support/Equipment		Unit Square Feet	Extended Sg. Feet	Location	Notes			
	Current	Future							
File Drawers	10	20	3	60	Near Admin Assts	3-Hi cabinets			
Equipment	1	1	64	64	Near Admin Assts	Copier, work counter			
Digital Storage	0	1	64	64		Shelving; can be spread throughout			
Storage	0	0	100	0		Lockable room; shelving			
				0					
				0					
				0					
				0					
				0					
Support Totals:				188					

DEPARTMENT SUMMARY INFORMATION:									
Personnel	1368	Square Ft.							
Equipment	188	Square Ft.							
Sub Total:	1556	Square Ft.							
Circulation	1.54								
Total Carpetable:	2396	Square Ft.							

INTERVIEWEE:									
Interview Date:									
Revision Submitted:									
Sign Off:									

DEPARTMENT NOTES:									

NAVIGATION									
Summary	Executive	Administration	Account Admin	Creative Services	Support	+	:	◀	



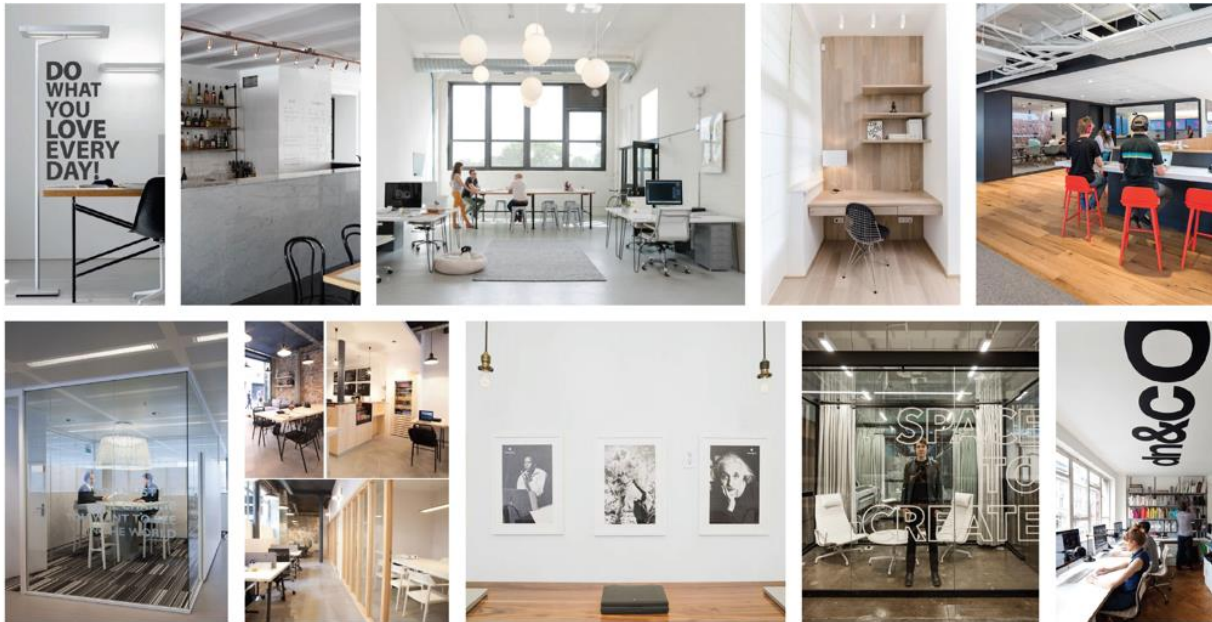
PERSONNEL									
Position	Personnel Totals		Unit Square Ft.		Extended Sq. Feet	Equipment			Notes
	Current	Future	Office	Workstation		PC	Printer	Fax	
Team Manager	1	10	43		430	2	1		
Team Assistant	3	31		36	1116	1			
					0	2			
					0	2			
					0				
					0				
					0				
					0				
					0				
					0				
					0				
					0				
					0				
Personnel Totals:	4	41			1606	7	1	0	

SUPPORT/EQUIPMENT SPACES									
Space	Support/Equipment		Unit Square Feet	Extended Sq. Feet	Location	Notes	Department Notes:		
	Current	Future							
				0					
				0					
Concept Lounge	0	1	200	200					
Work Area	0	1	300	300	Adjacent to Teams	Work counters			
Storage	0	1	160	160	Next to Work Area	Shelving			
				0					
				0					
				0					
				0					
				0					
				0					
Support Totals:				660					

Summary	Executive	Administration	Account Admin	Creative Services	Support	+	:	4
---------	-----------	----------------	---------------	--------------------------	---------	---	---	---



- **LOCATION: RICHMOND VIRGINIA**
- **OFFICE: DOWNTOWN, ALONG THE RIVER**
- **ENCOURAGE COMMUNITY**
- **COWORKING ENVIRONMENT**
- **VISIBILITY**
- **TRANSITIONAL**
- **CLEAN SPACES, MODERN LINES**
- **TOUCHES OF TRADITIONAL**



CONCEPT STATEMENT



INSPIRATION

IDSN 3600

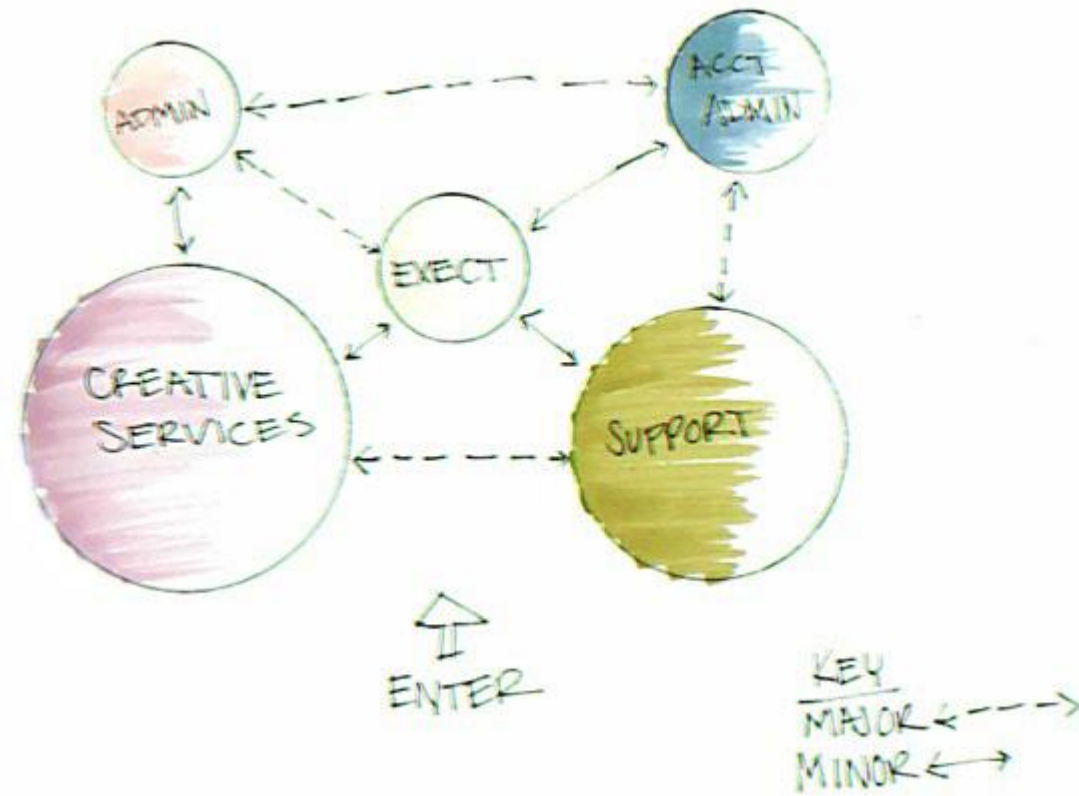
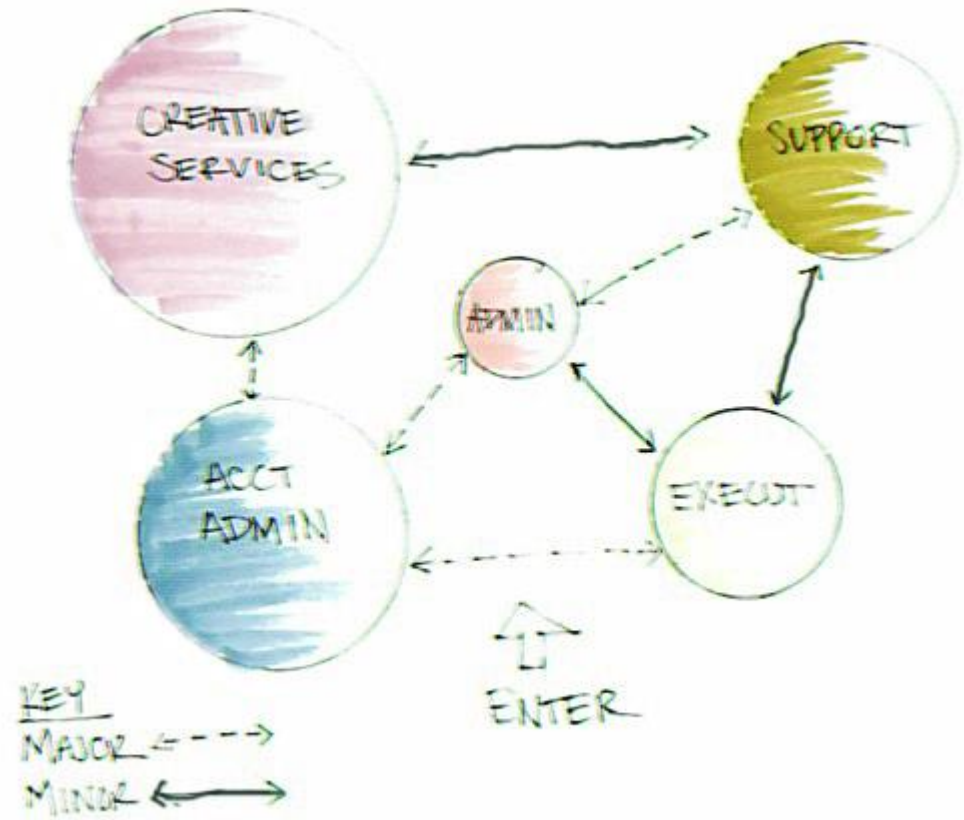
SYSTEMS

CINDY MARECK

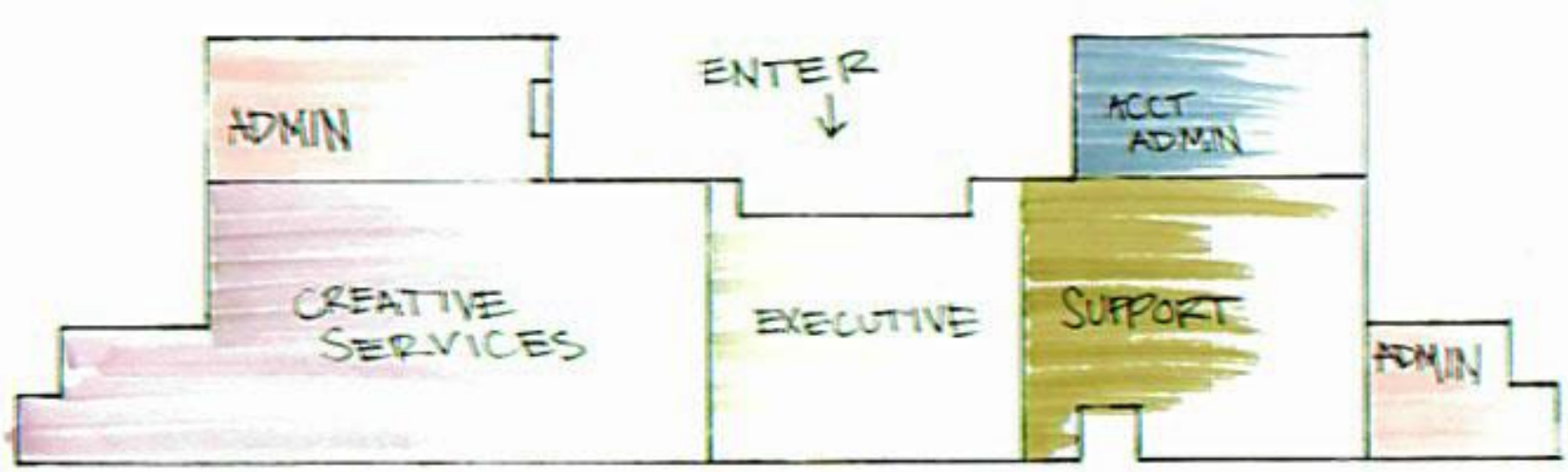
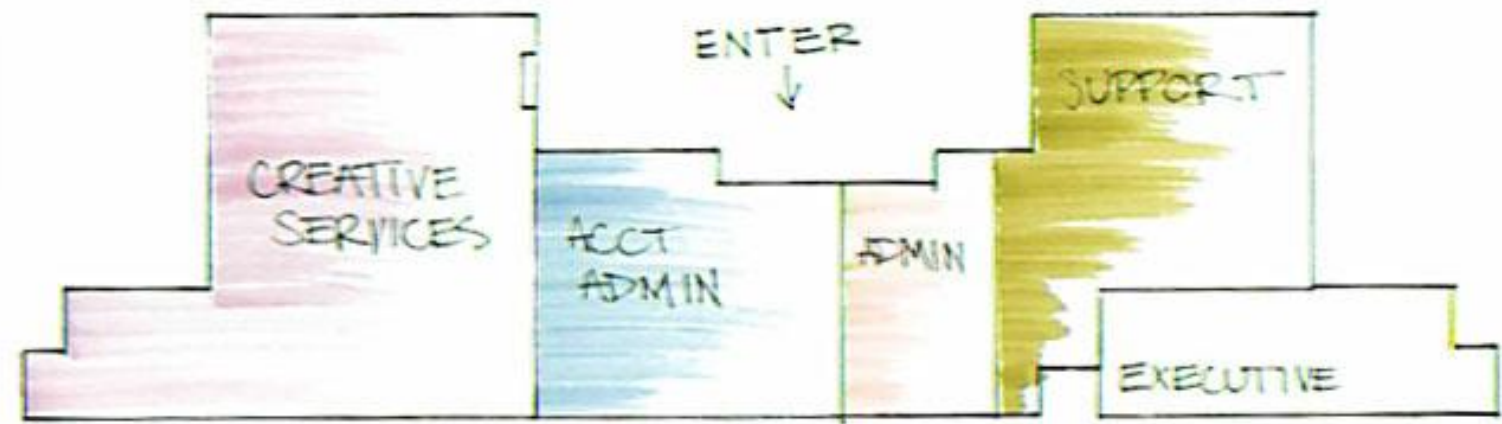
[SYSTEMS COMPILATION PORTFOLIO 2]

IDSN 3600 EAST CAROLINA UNIVERSITY

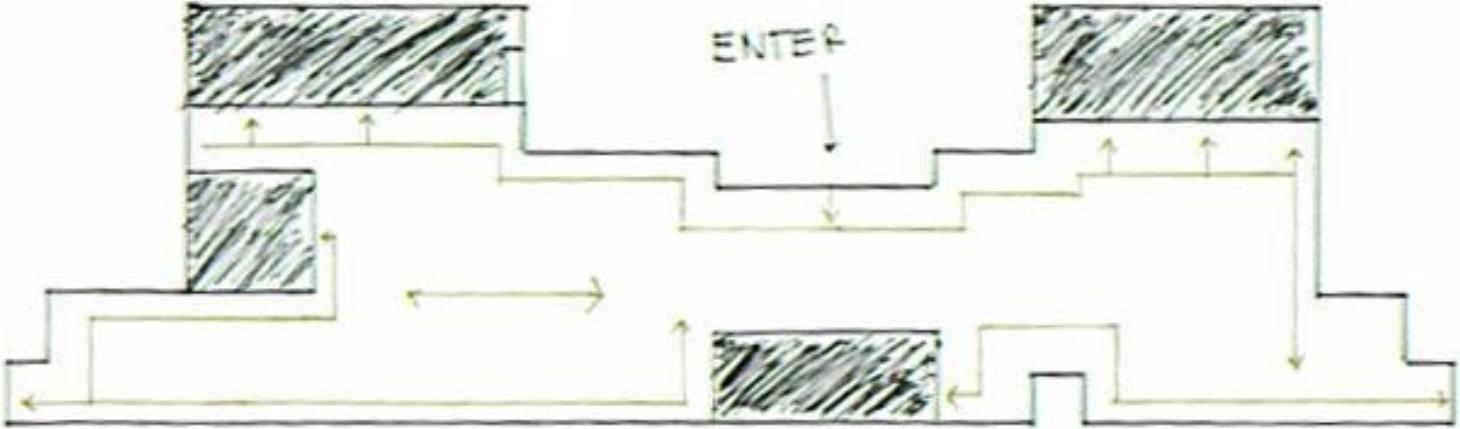
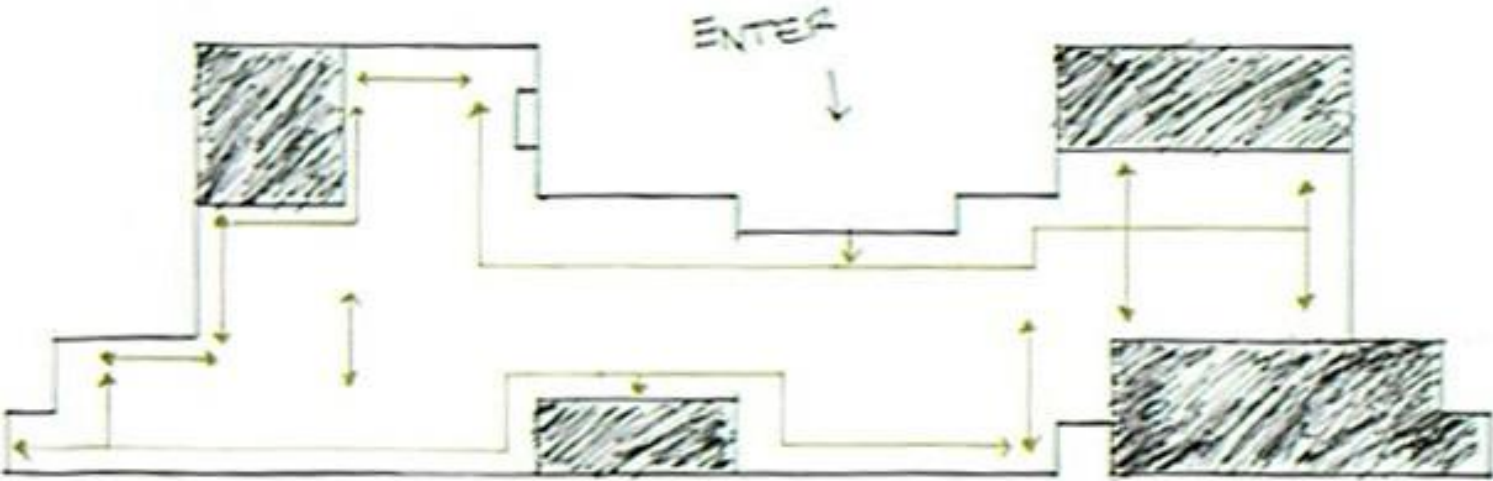
MARECK, CINDY



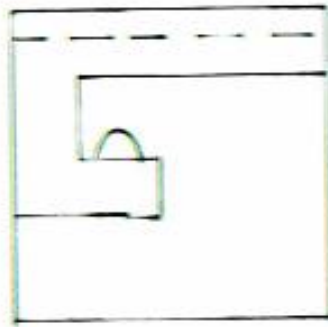
BUBBLE DIAGRAMS



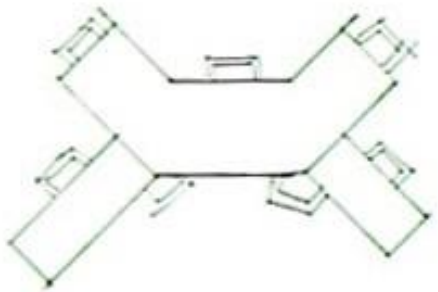
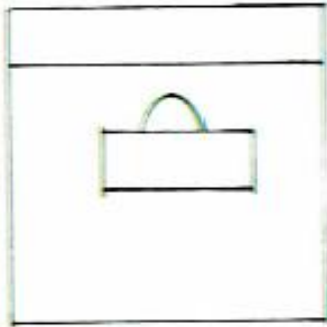
BLOCK DIAGRAMS



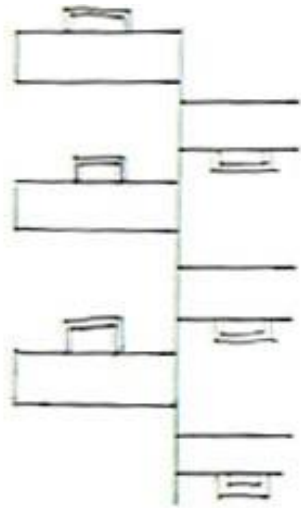
SPATIAL CONCEPT SKETCHES



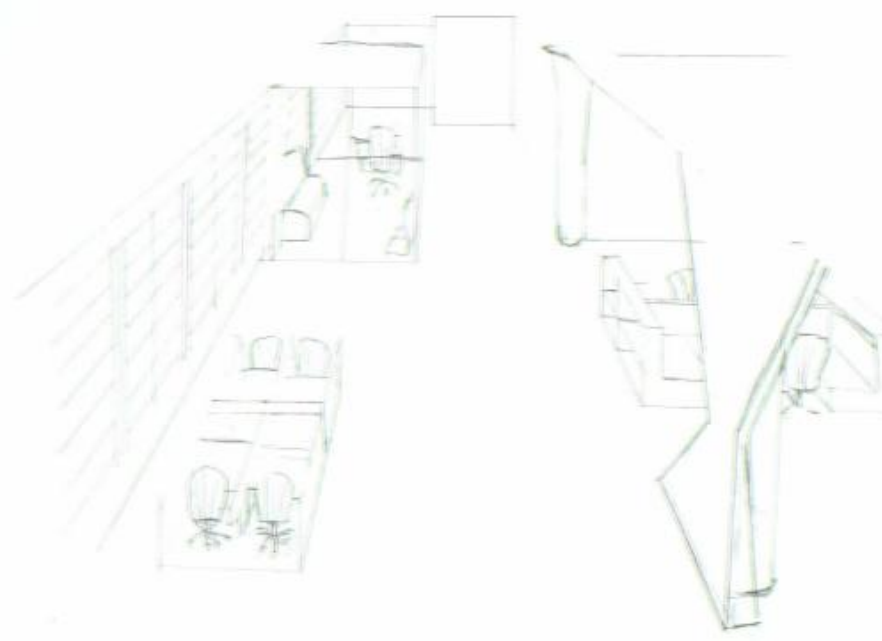
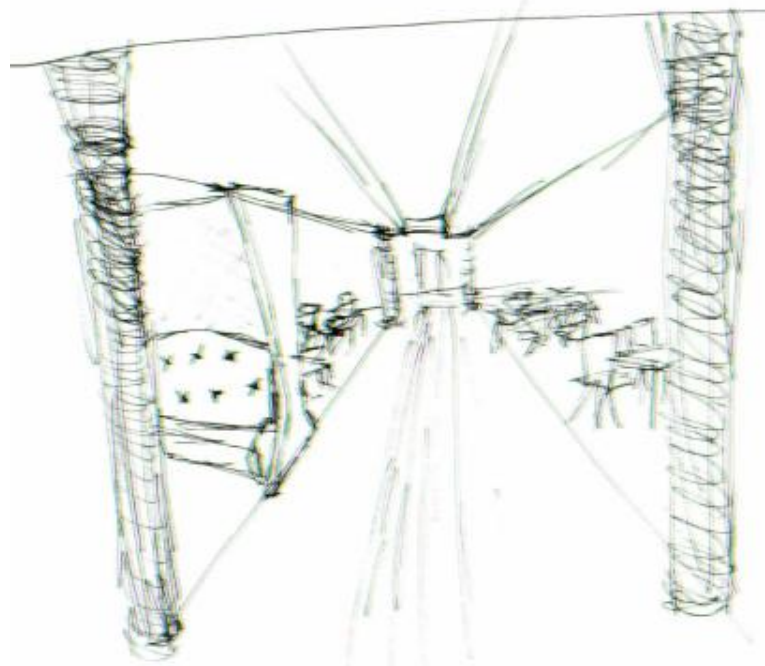
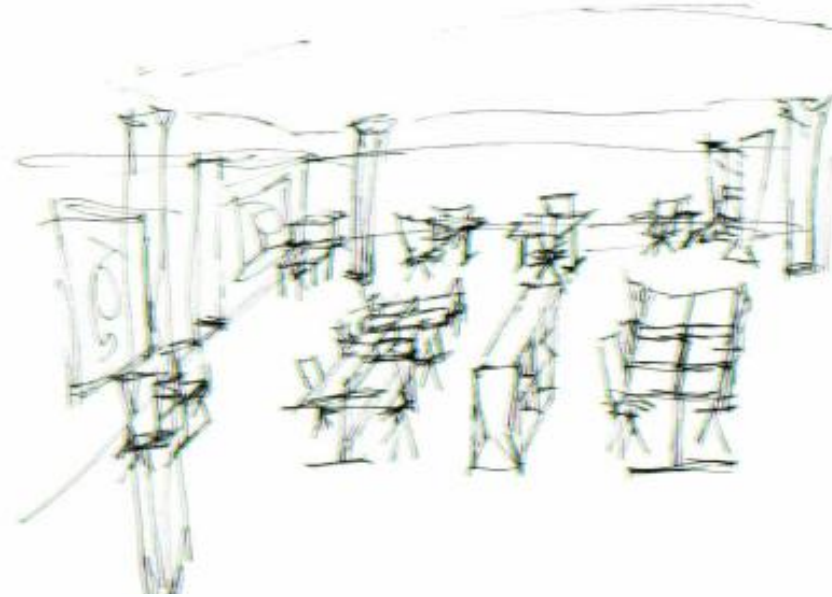
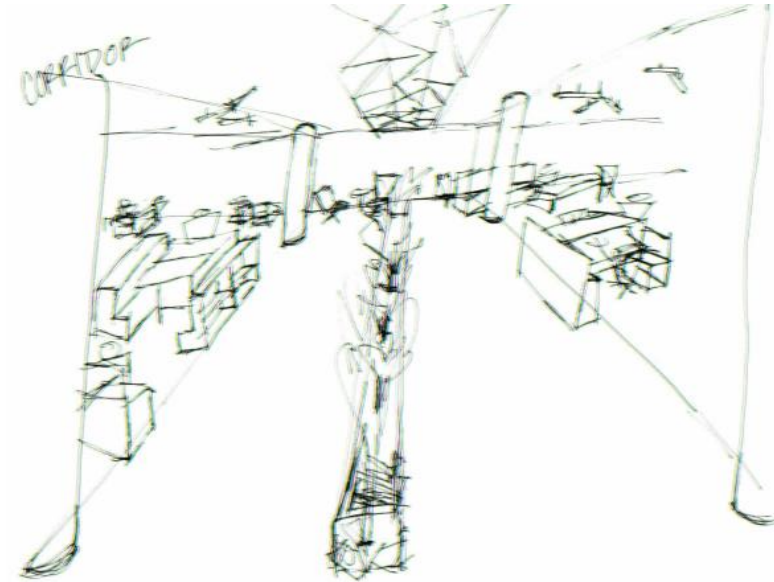
LARGE OFFICES



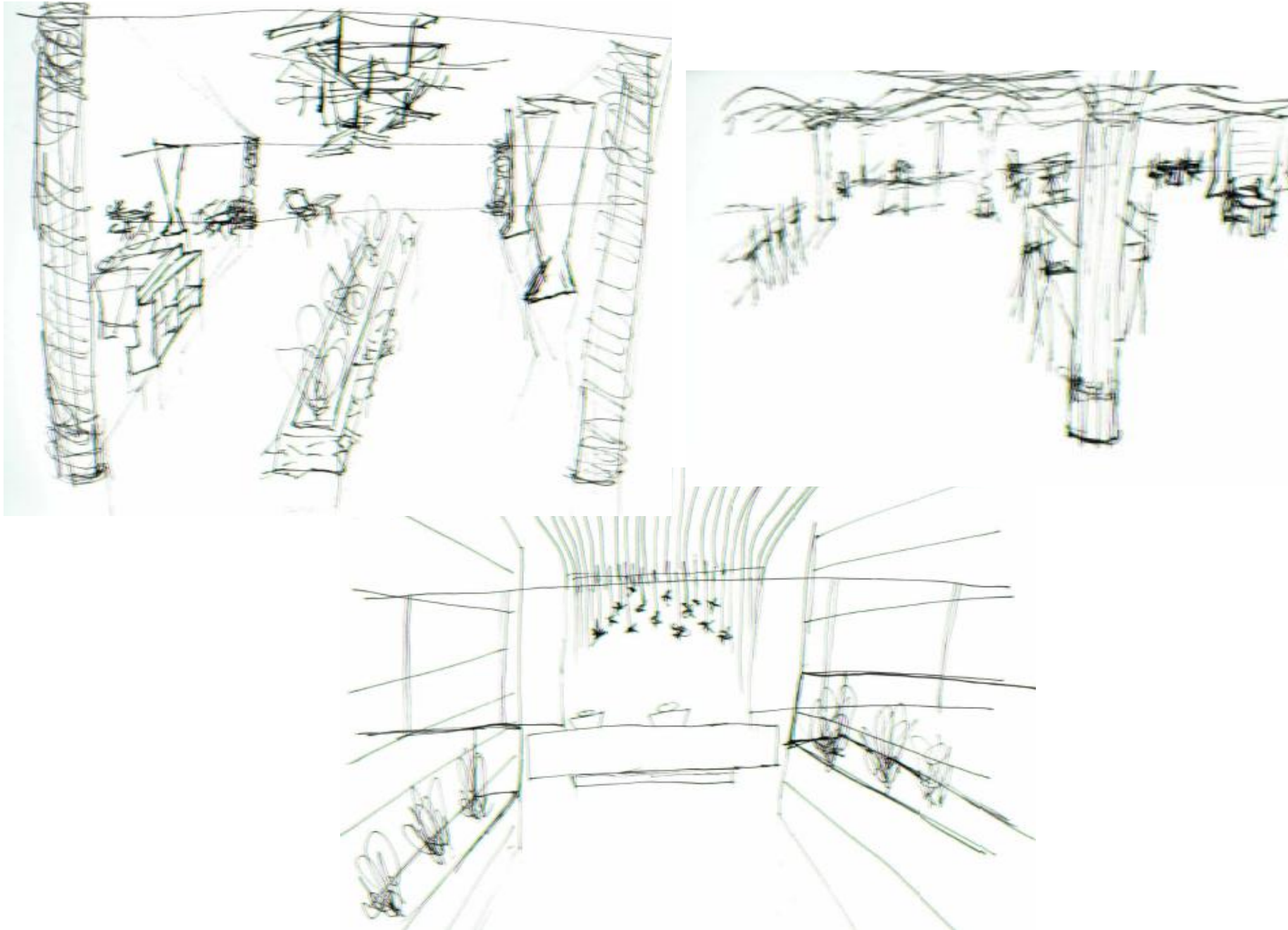
WORKSTATIONS



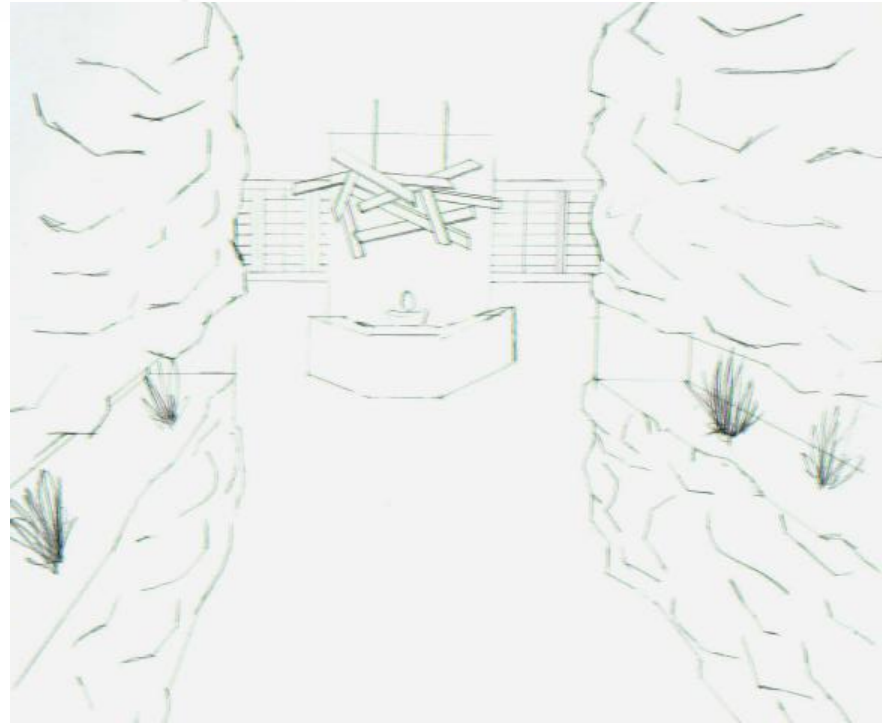
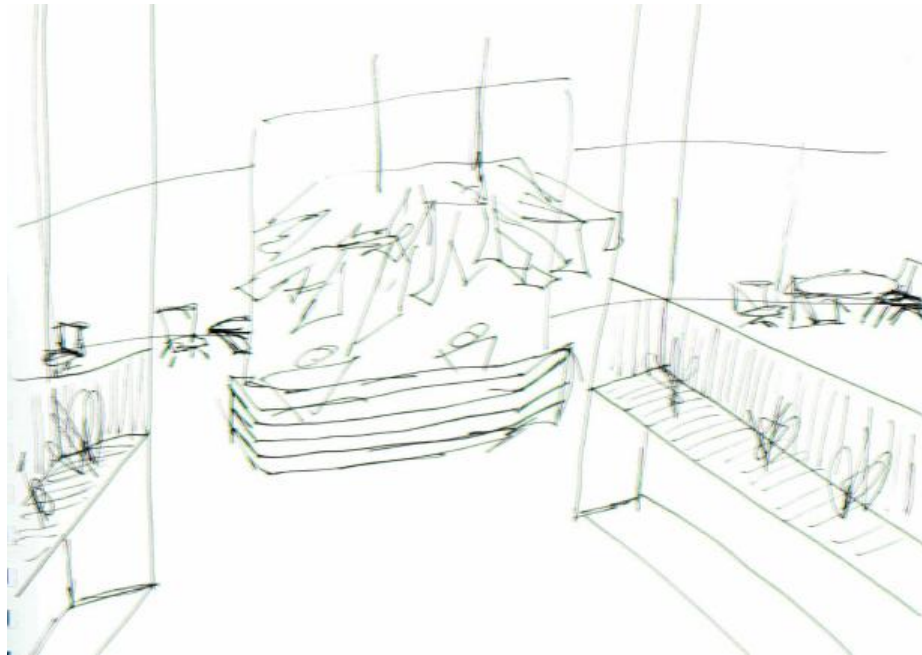
WORK STATION SKETCHES



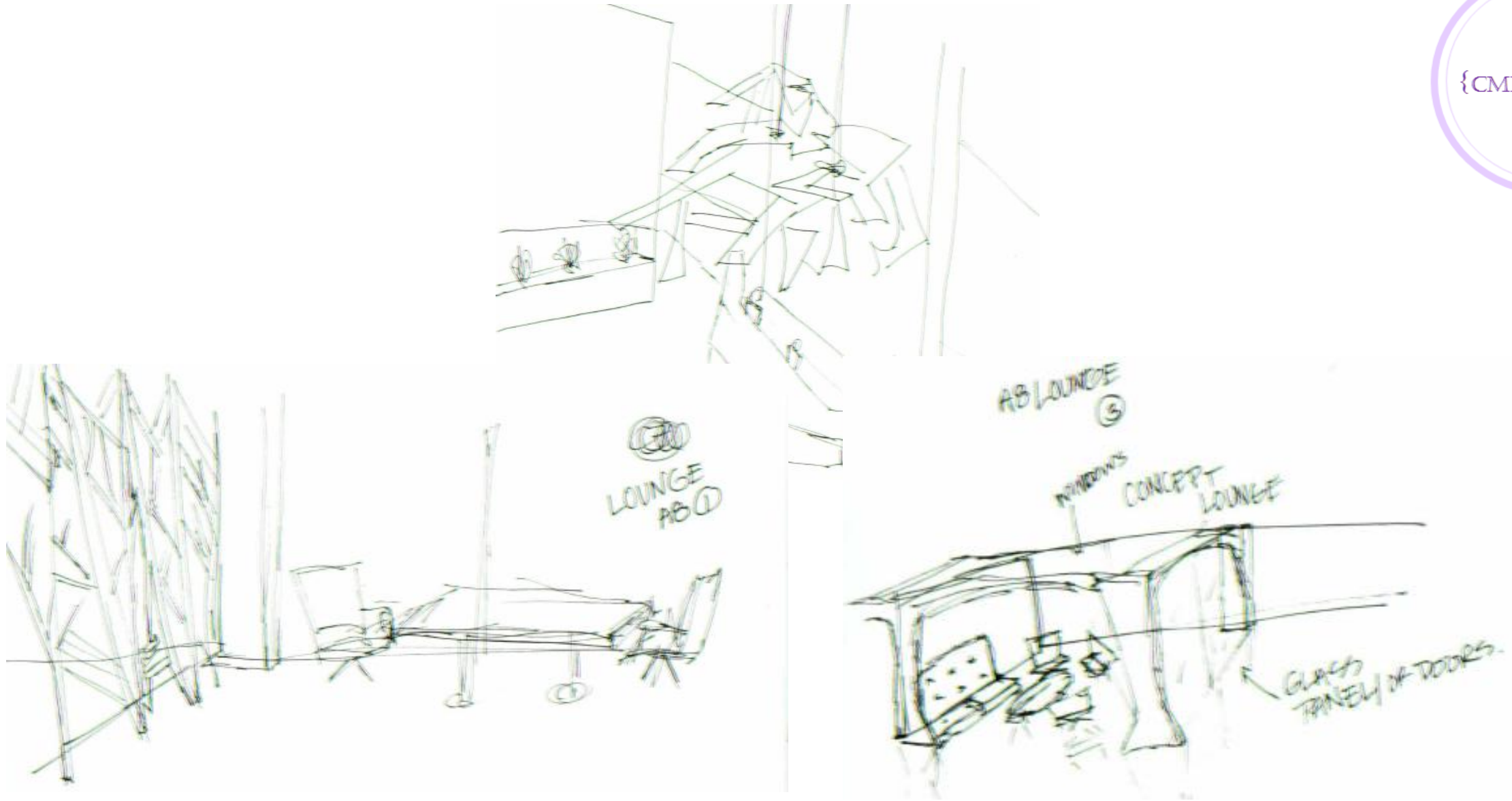
SKETCHES



SKETCHES

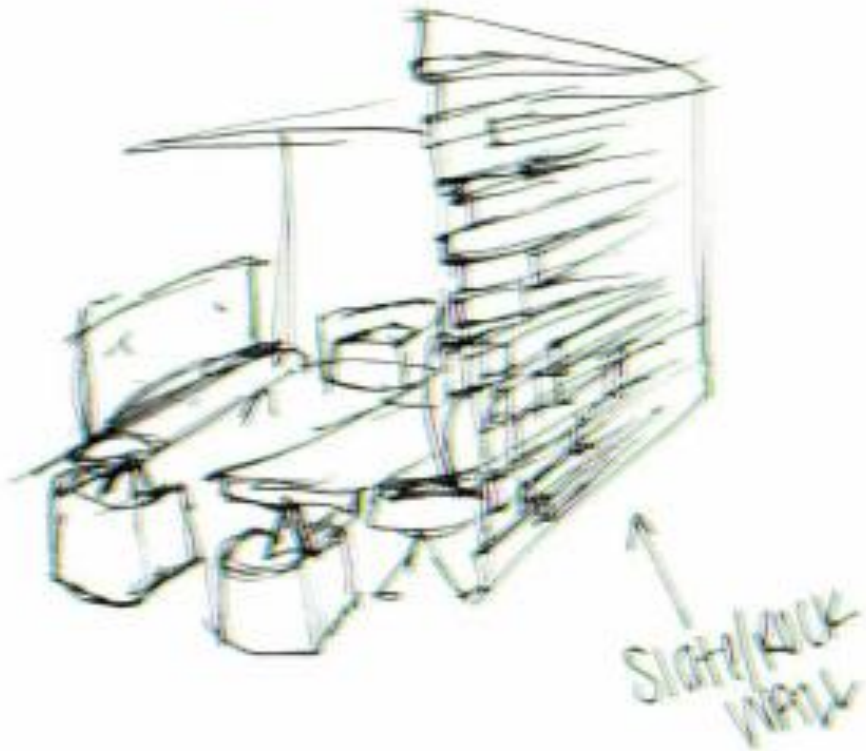


SKETCHES

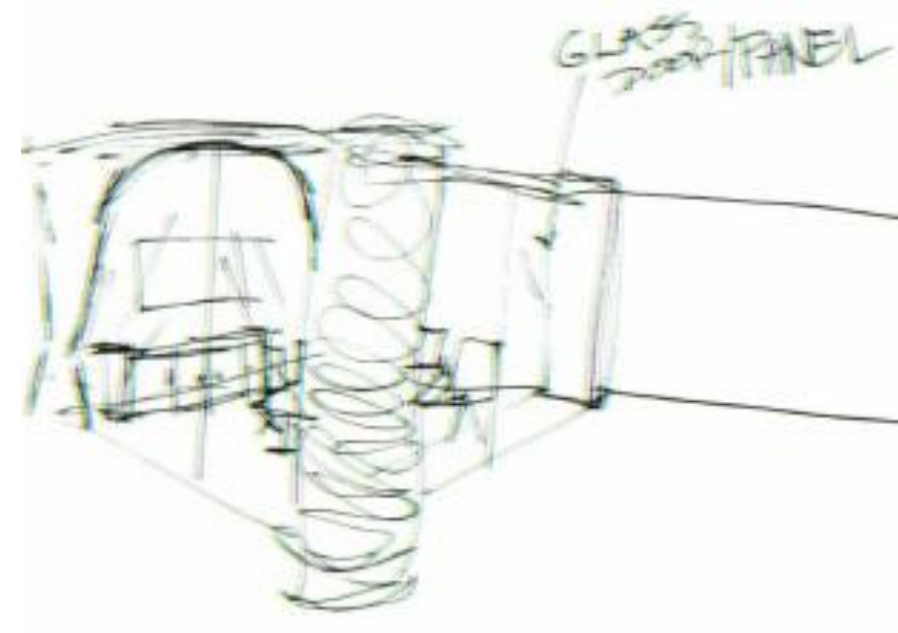


SKETCHES

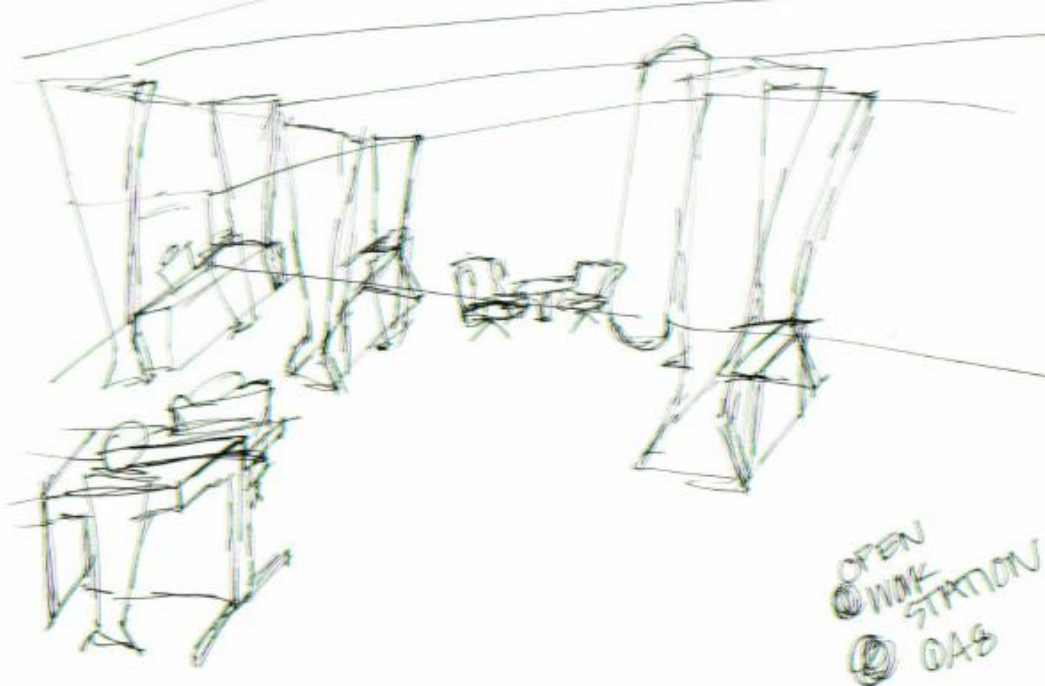
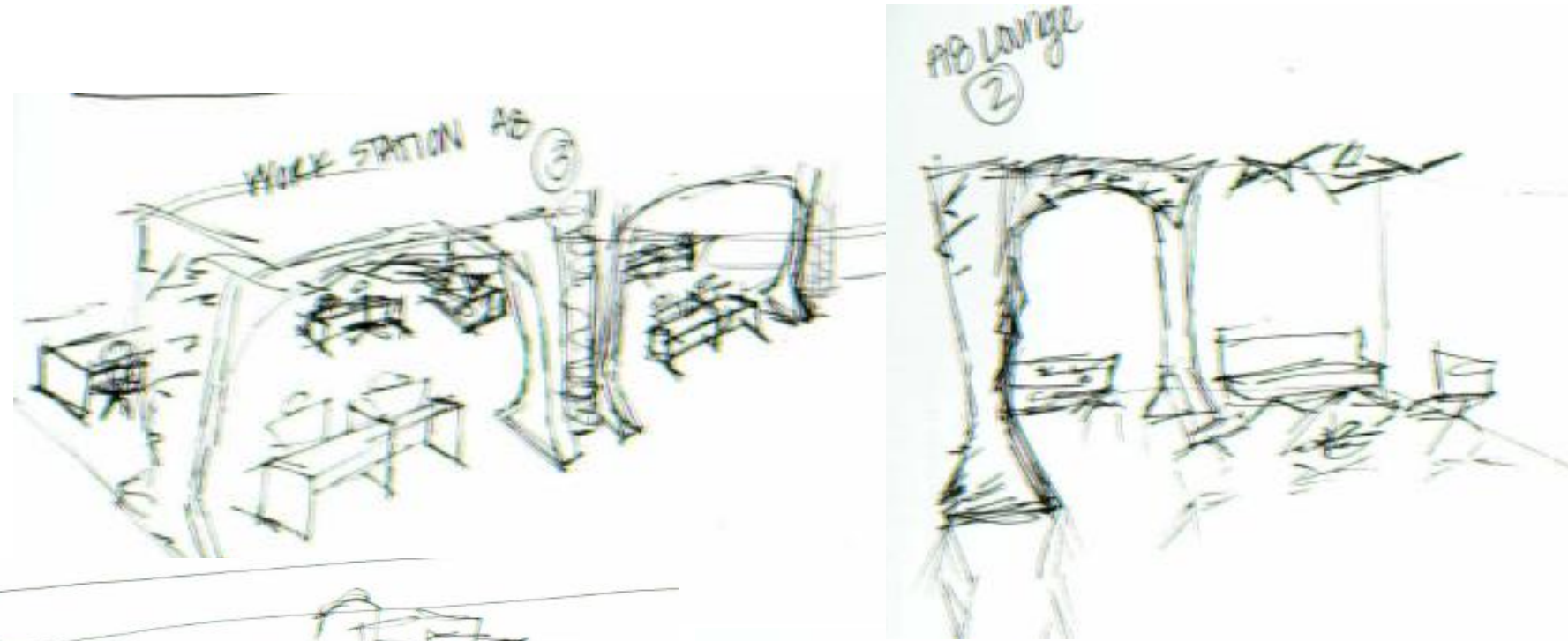
LOUNGE
R8 (4)



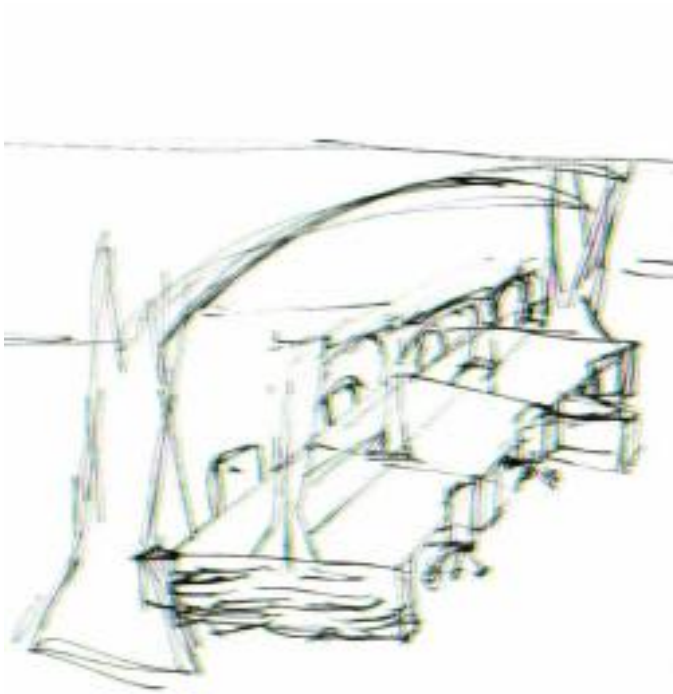
CNE
ROOM



SKETCHES



SKETCHES

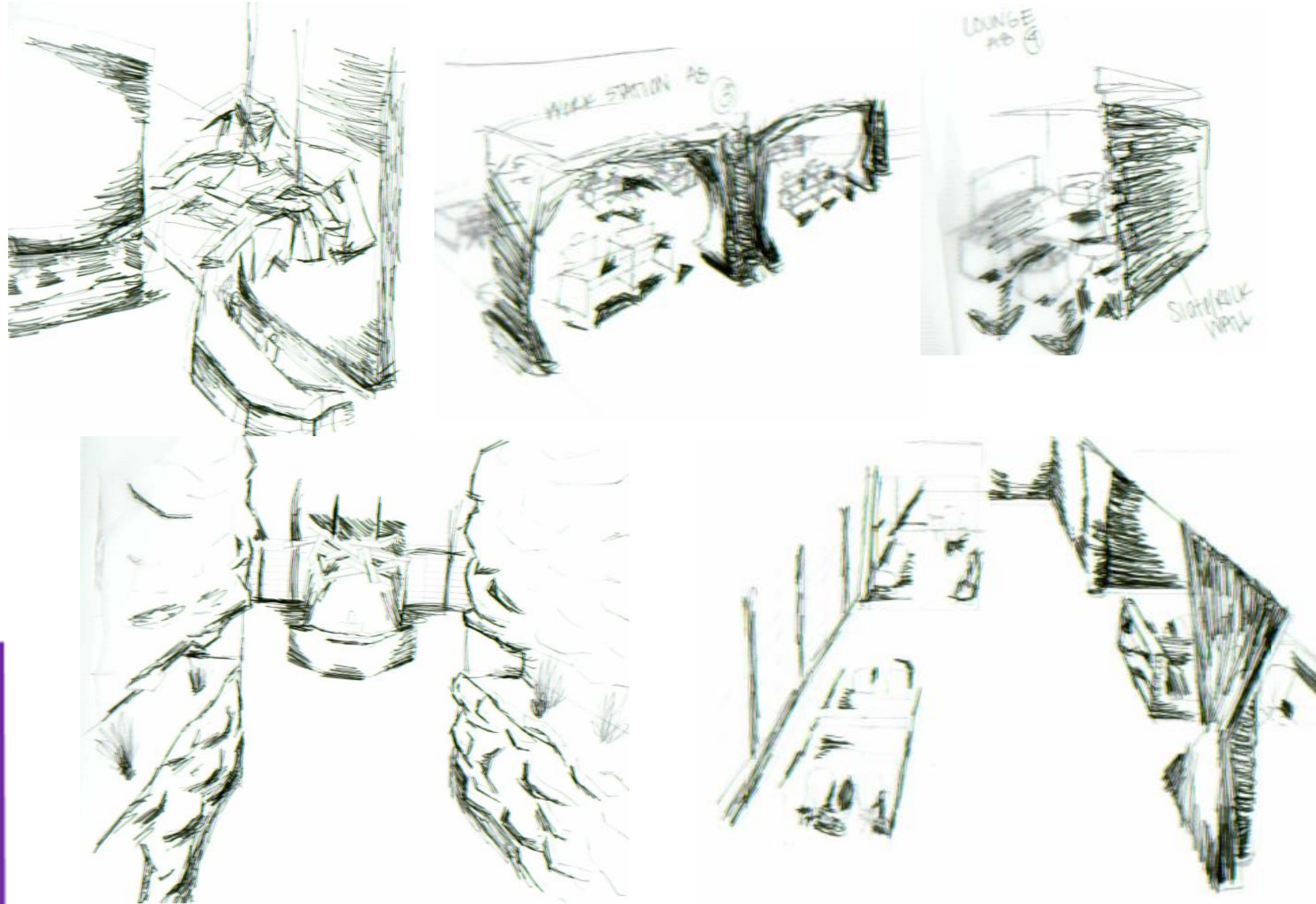


SKETCHES

IDSN 3600
SYSTEMS

CINDY MARECK

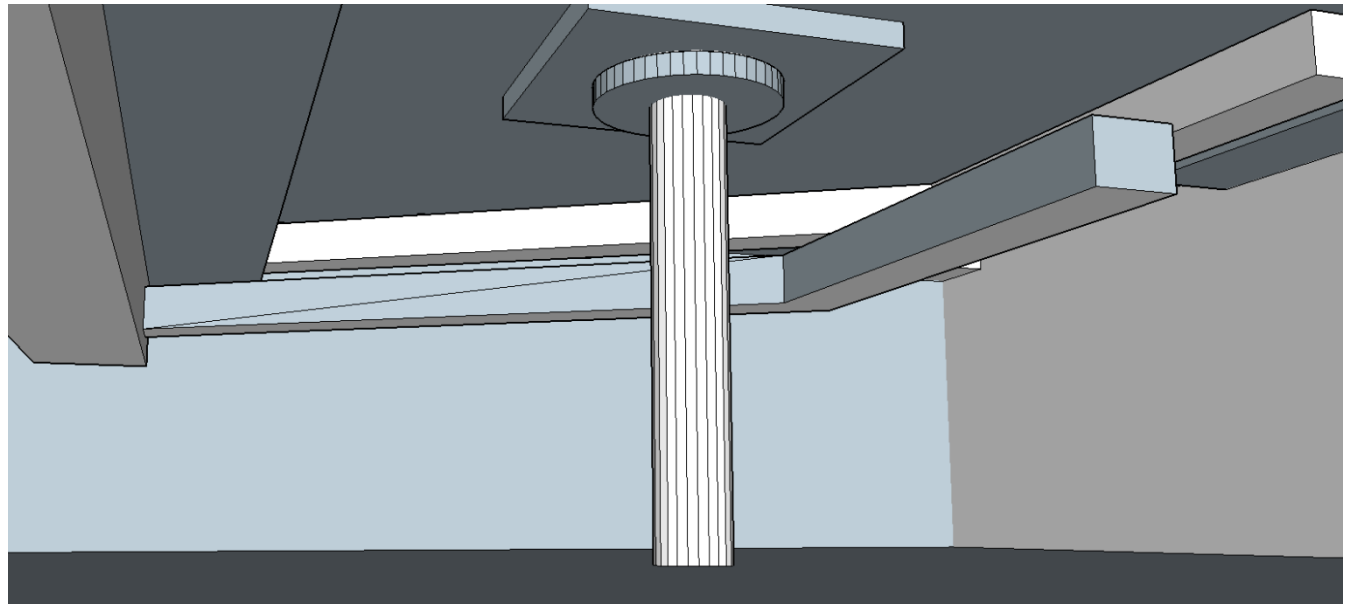
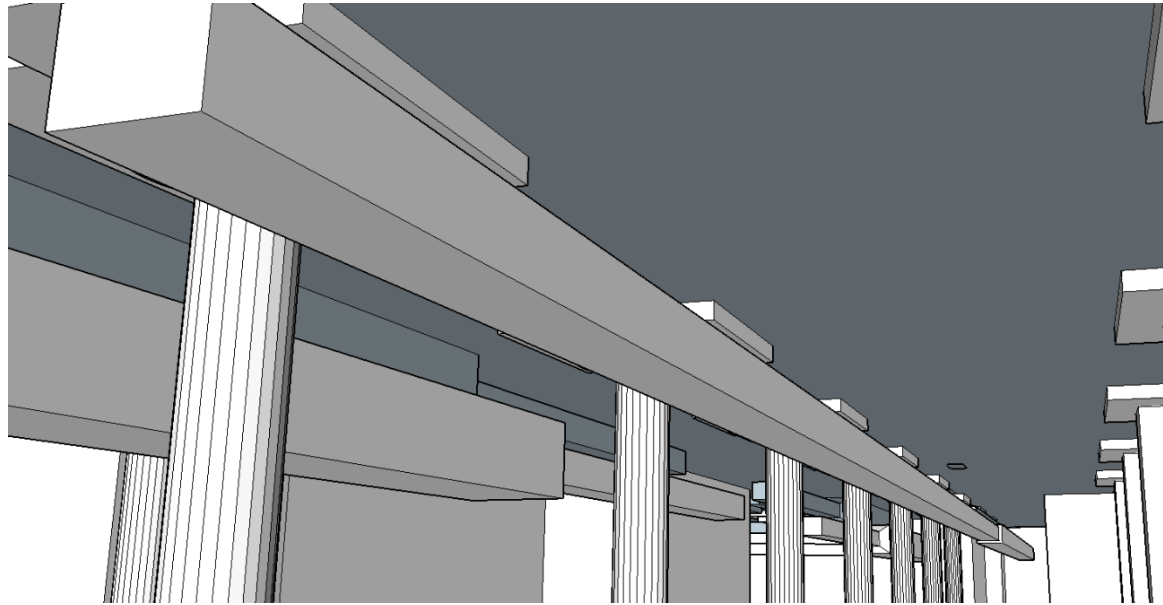
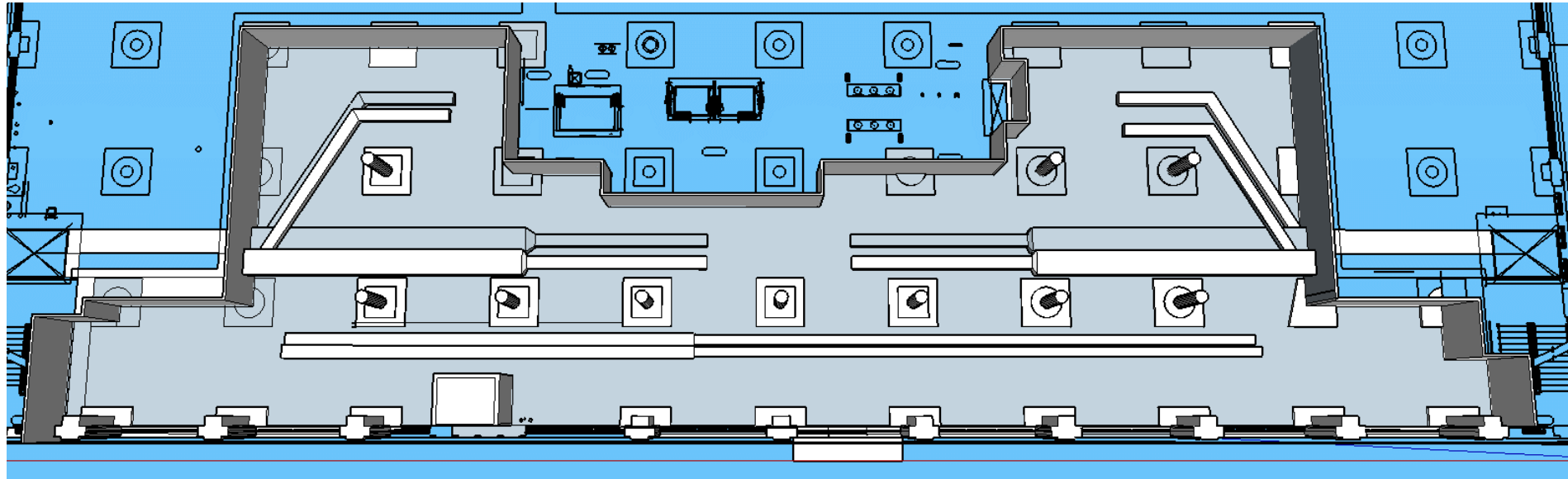
lighting



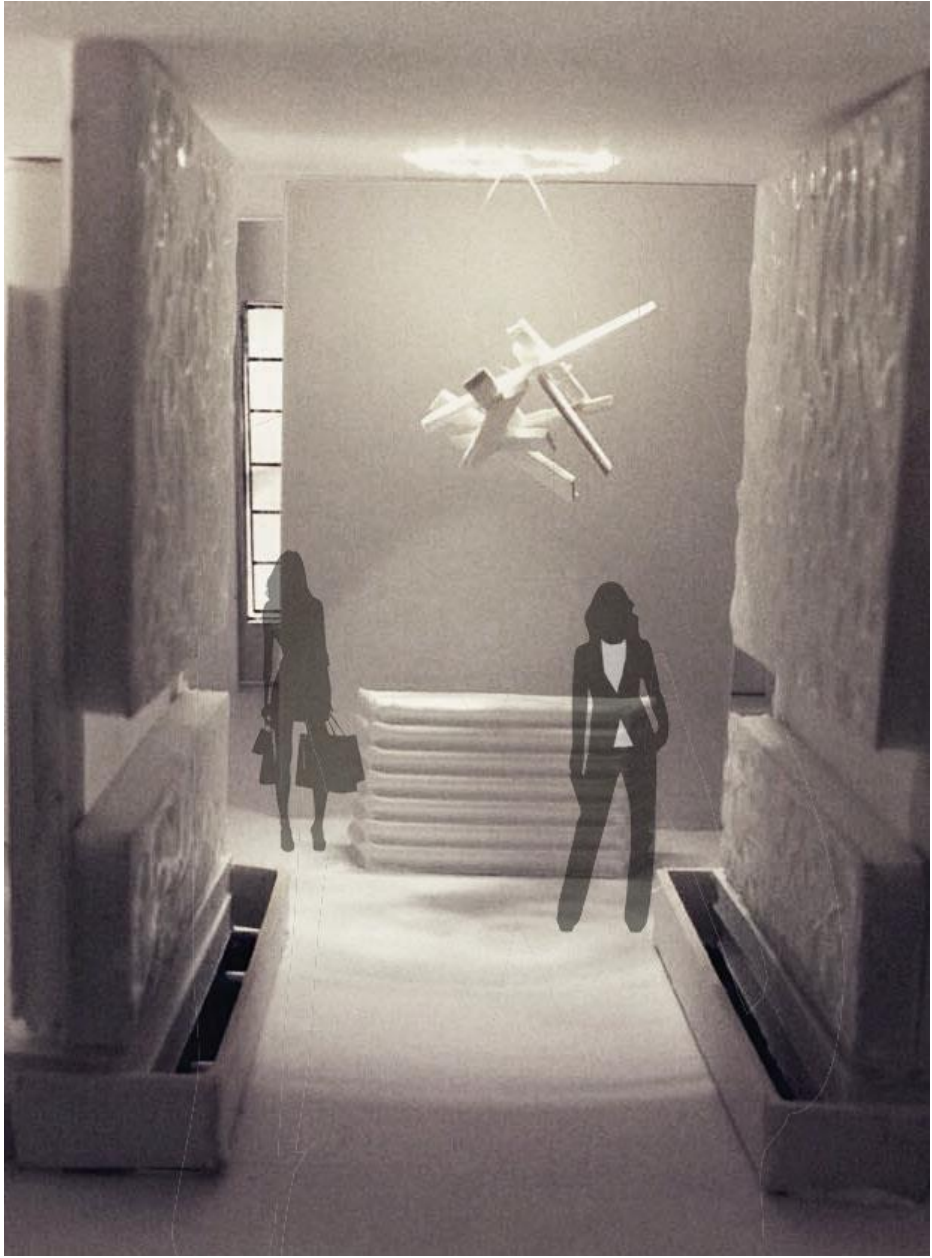
LIGHTING SKETCHES

IDSN 3600
SYSTEMS

CINDY MARECK



SYSTEMS RCP SKETCHES

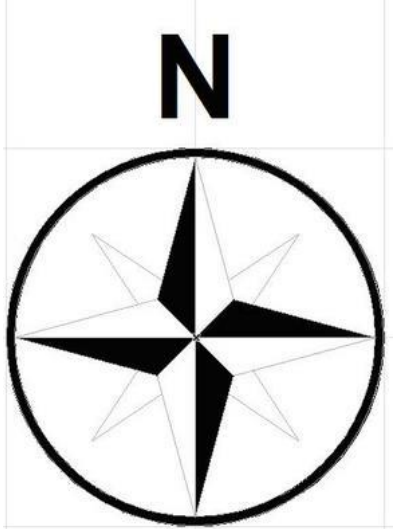


LIGHTING MODEL

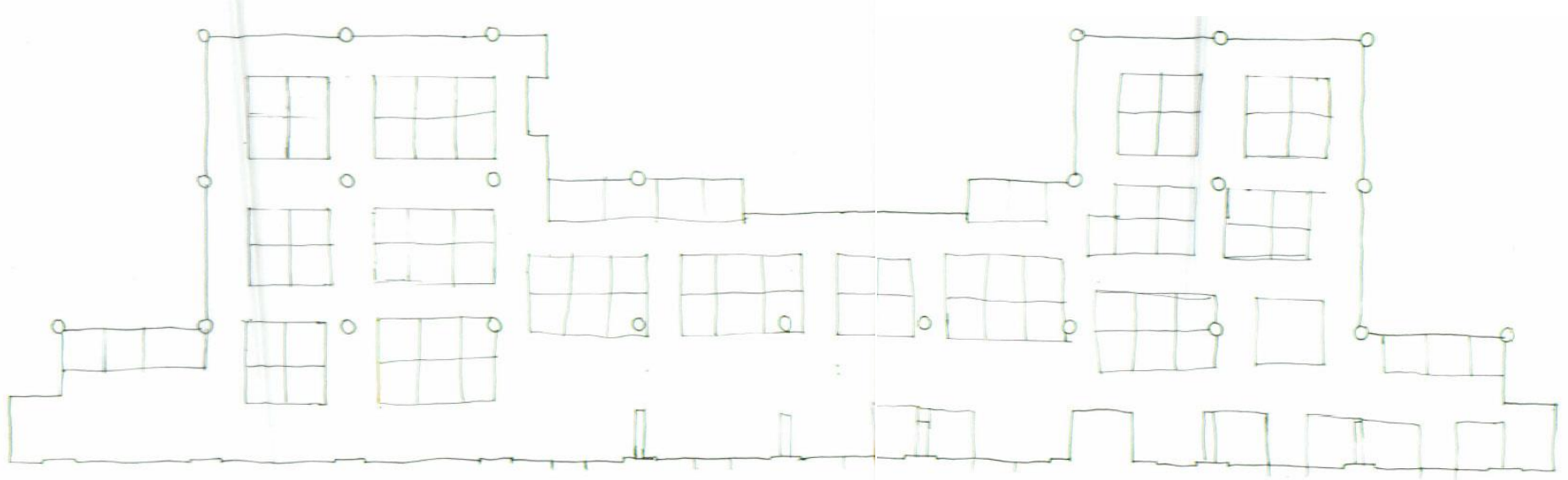
IDSN 3600

SYSTEMS

CINDY MARECK



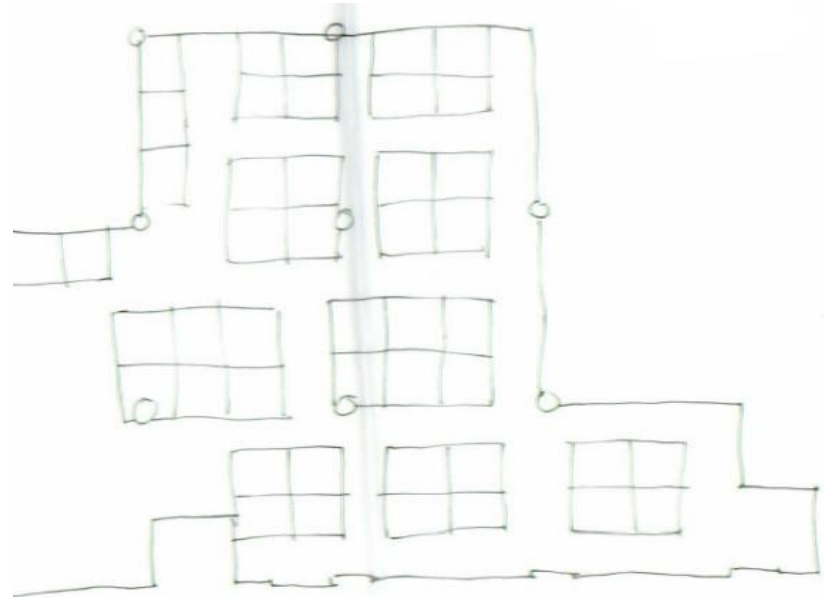
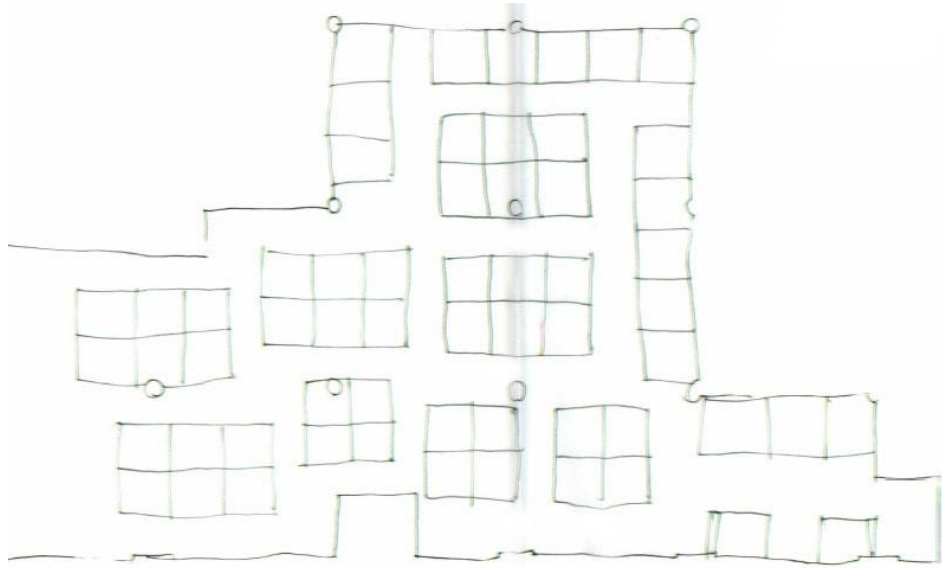
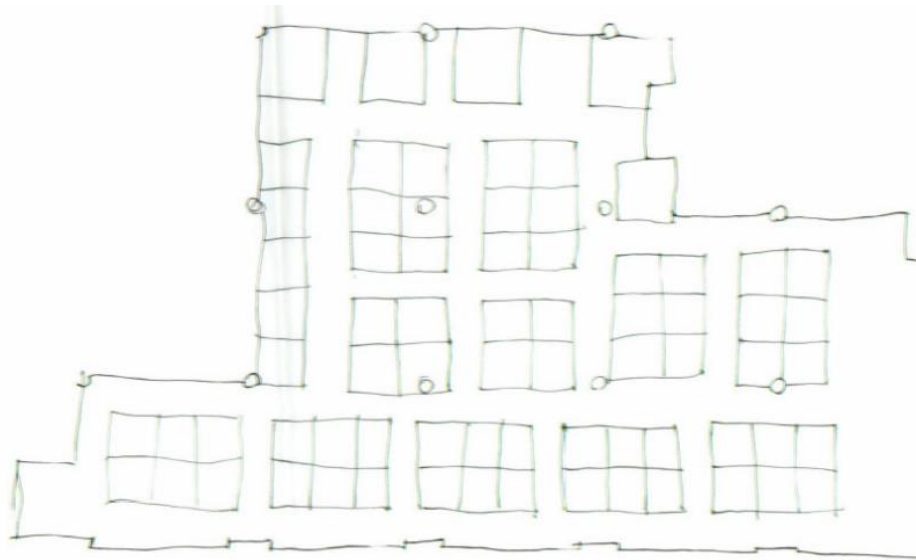
BUILDING ORIENTATION



SPACE PLAN SKETCHES

IDSN 3600
SYSTEMS

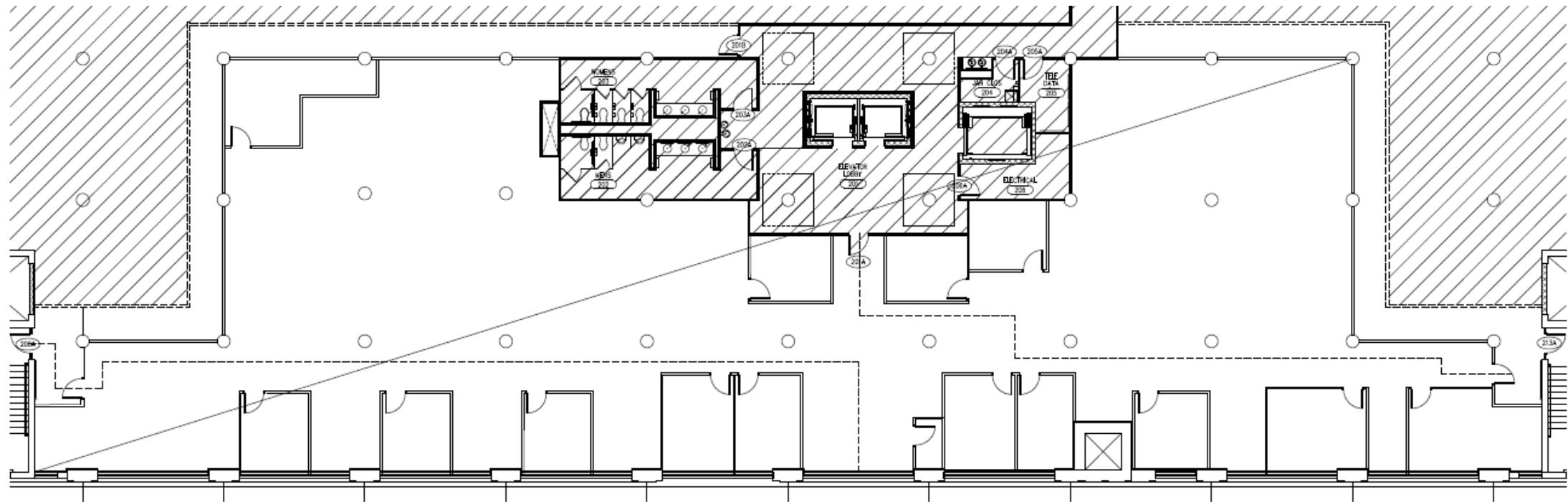
CINDY MARECK



SPACE PLAN SKETCHES

IDSN 3600
SYSTEMS

CINDY MARECK



LIFE SAFETY PLAN

IDSN 3600
SYSTEMS

CINDY MARECK



$$\text{MAINTAINED FC} = \frac{(\text{NUMBER OF LAMPS}) \times (\text{INITIAL LAMP LUMENS}) \times \text{LLF} \times \text{CU}}{\text{AREA}}$$
$$\text{RCR (ROOM CAVITY RATIO)} = 8.48$$
$$\frac{5(9.5)(10.5+12)}{126}$$
$$\text{MAINTAINED FC} = \frac{(2 \times 2) \times (2700) \times (.9) \times (32)}{10,200} = 30.49$$

LUMEN/ZONAL CAVITY CALCULATIONS



ML4 22 2178 OL (2) 17W T8
2x2 RECESSED, OPAL ACRYLIC DIFFUSER

LTL 13273

Total Luminaire Efficiency 75%

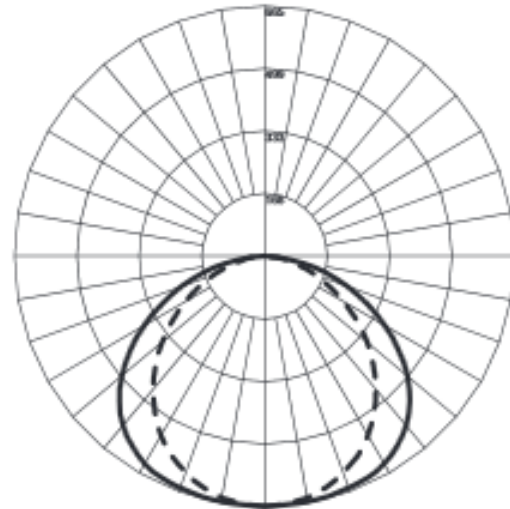
0% Uplight 100% Downlight

Spacing Criteria

Lateral Plane 0° 90°
1.24 1.42

TOTAL LAMP LUMENS = 2700

INPUT WATTS = 31



Maximum Candela = 665 Located At Horizontal Angle = 0, Vertical Angle = 0
DASHED - Vertical Plane Through Horizontal Angles (0 - 180) (Through Max. Cd.)
SOLID - Vertical Plane Through Horizontal Angles (90 - 270)

LUMINANCE DATA (cd/sq.m)

Angle In Degrees	Average 0-Deg	Average 45-Deg	Average 90-Deg
45	1794	2139	2389
55	1618	2044	2352
65	1398	1874	2218
75	1124	1649	1996
85	816	1278	1278

ZONAL LUMEN SUMMARY

Zone	Lumens	%Lamp	%Fixt
0-30	531.38	19.7	26.3
0-40	884.91	32.8	43.7
0-60	1591.73	59	78.7
0-90	2023.39	74.9	100
90-120	0	0	0
90-130	0	0	0
90-150	0	0	0
90-180	0	0	0
0-180	2023.39	74.9	100

COEFFICIENTS OF UTILIZATION - ZONAL CAVITY METHOD

Effective Floor Cavity Reflectance 0.20

RC	80				70				50				30				10				0
	70	50	30	10	70	50	30	10	50	30	10	50	30	10	50	30	10	50	30	10	0
0	89	89	89	89	87	87	87	87	83	83	83	80	80	80	76	76	76	75	75	75	75
1	81	78	75	72	79	76	73	70	73	70	68	70	68	66	67	66	64	63	63	63	63
2	74	68	62	58	72	66	61	57	64	60	56	61	58	55	59	56	54	52	52	52	52
3	67	59	53	48	65	58	52	48	58	51	47	54	50	46	52	48	45	44	44	44	44
4	62	52	46	41	60	51	45	40	49	44	40	48	43	39	46	42	39	37	37	37	37
5	58	47	40	35	55	46	39	35	44	39	34	43	38	34	41	37	34	32	32	32	32
6	52	42	35	30	51	41	35	30	40	34	30	39	34	30	37	33	29	28	28	28	28
7	48	38	31	27	47	37	31	27	36	31	26	35	30	26	34	30	26	24	24	24	24
8	45	35	28	24	44	34	28	24	33	28	24	32	27	23	31	27	23	22	22	22	22
9	42	32	26	21	41	31	25	21	30	25	21	30	25	21	29	24	21	20	20	20	20
10	39	29	23	19	38	29	23	19	28	23	19	27	22	19	27	22	19	18	18	18	18

EcoSystem is a trademark of Lutron Electronics Co., Inc. Allume is a registered trademark of Lutron Electronics Co., Inc.

Zumtobel Lighting, Inc. ©2013
3300 Route 9W
Highland, NY 12528-2630

845-691-6262
800-448-4131
zli.us@zumtobel.com

ML4 MD 2X2 T8



» Family Datasheet

**Common features
ML4 MD 2x2**

- Ideal for offices, retail, health care, and educational facilities
- 20 gauge cold rolled steel housing
- 2' x 2' size with 4-1/8" housing height
- Lay-in mounting for typical grid ceilings (ML4U and ML4F) with integral bend out tabs or adjustable mounting bracket for selected concealed T-bar or gypsum board ceilings (ML4E)
- Right-angle access plate allows feed from top or side of unit
- Optic assembly pulls down for lamp access
- Finish is post painted powder coated White
- Powder coated high-reflectance White interior reflector and shaped extruded acrylic diffusers
- MicroGrid Diffuser: slotted steel pattern in Titan finish provides soft, direct light distribution
- Standard ballast is non-dimming universal with options for 347V, 0-10V, DALI, Lutron ballasts and Stem Dimming
- Integrated Standby Battery Pack option
- Product family includes 1' x 4' and 2' x 4' sizes and a 1' x 4' surface mount version

**Differentiating features
ML4 MD 2x2 T8**

- 17W T8 fluorescent lamps with medium bi-pin (G-13) sockets
- Up to 75% efficiency with (2) 17W T8 lamps and Opal center diffuser

» add to watch list

PHOTOMETRIC DATA

IDSN 3600
SYSTEMS

CINDY MARECK