

# Portfolio One

Scarlett Salter

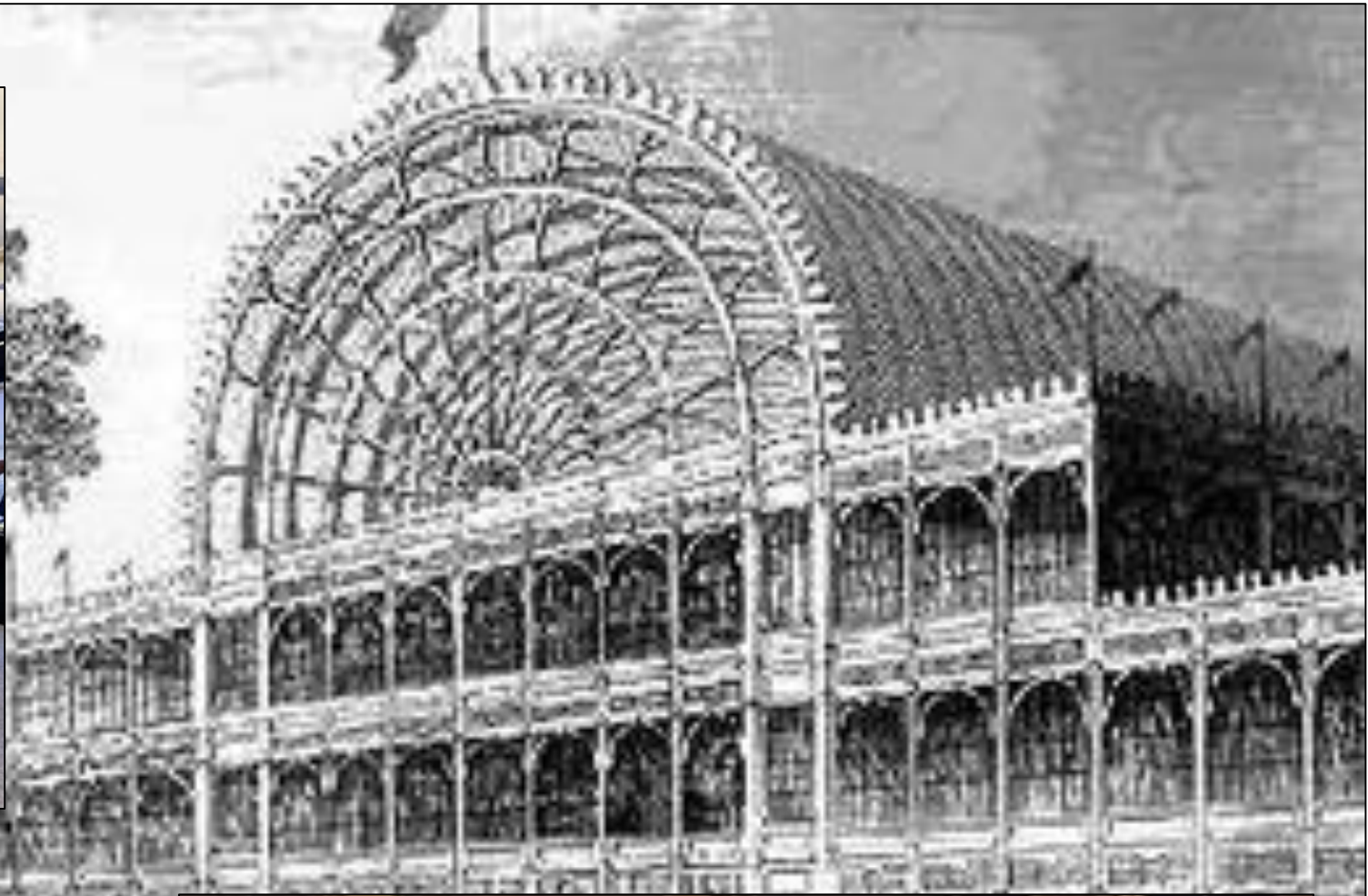
Edgeworth Building, Richmond, VA

IDSN 3600 - Fall 2015

---

## Concept Statement:

- This design will take elements from the Crystal Palace that was built during the Industrial Revolution.
- The notion that many people from different backgrounds and cultures would come together at this location to share their ideas and collaborate has a similar purpose and atmosphere to the coworking environment.
- Aesthetic elements will be incorporated such as the glass exterior that suggests transparency and commonalty.
- The wrought iron structure will be interpreted in the space in both structural and decorative elements.
- The open spaces that allow people to interact and socialize will also be interpreted throughout the design.
- The Crystal Palace was an environment where all walks of people came to collaborate and learn from each other in an innovative time known as the Industrial Revolution. A similar notion is being seen in many metropolitan areas known as coworking, where people come together in a working environment to work independently or together, regardless of their field of study.







	HC-75 Maryville Brown		HC-73 Plymouth Brown		HC-71 Hasbrouk Brown
	HC-94 Old Salem Gray		HC-142 Stratton Blue		HC-145 Courtland Blue
	HC-82 Bennington Gray		HC-81 Manchester Tan		HC-88 Jamesboro Gold

Summary										
Personnel Totals Per Department	Personnel Totals		Personnel				Support	Total	Circulation	Carpetable
	Current	Future	Sq. Feet	Computer	Printer	Fax	Sq. Feet	Sq. Feet		Sq. Feet
Executive	1	1	120	1	-	-	320	440	1.54	678
								-		
Account Admin	-	1	120	9	-	-	354	474	1.54	730
Creative Services	-	80	2,880	-	-	-	700	3,580	1.54	5,513
Support	-	-	-	-	-	-	2,175	2,175	1.54	3,350
<b>Totals:</b>	<b>1</b>	<b>82</b>	<b>3,120</b>	<b>10</b>	<b>-</b>	<b>-</b>	<b>3,549</b>			<b>10,270</b>

# Program – Summary



Executive									
PERSONNEL									
Position	Personnel Totals		Unit Square Ft.		Extended Sq. Feet	Equipment			Notes
	Current	Future	Office	Workstation		PC	Printer	Fax	
					0				
					0				
					0				
					0				
Director	1	1	120		120	1			Locate near Reception
					0				
					0				
					0				
					0				
					0				
					0				
					0				
					0				
Personnel Totals:	1	1			120	1	0	0	
SUPPORT/EQUIPMENT SPACES									
Space	Support/Equipment		Unit Square Feet	Extended Sq. Feet	Location	Notes			
	Current	Future							
				0					
Waiting Area	1	1	200	200	Visible from Admin Asst	Seating for 4 guests			
				0					
Pantry	0	0	100	0	Near Admin Assts				
				0					
Fax/Copy	0	1	120	120	Near Admin Assts				
				0					
				0					
File Drawers	50	0	3	0		3-Hi cabinets			
				0					
Executive Conference Room	1	0	120	0	Adjacent to Waiting Area	Full AV			
				0					
				0					
Support Totals:				320					

Department Summary Information:		
Personnel	120	Square Ft.
Equipment	320	Square Ft.
Sub Total:	440	Square Ft.
Circulation	1.54	
Total Carpetable:	677.6	Square Ft.

Interviewee:  
Interview Date:  
Revision Submitted:  
Sign Off:

Department Notes:  
Entire company is progressive  
Space is attractive

# Program – Executive

Administration										z	
PERSONNEL											
Position	Personnel Totals		Unit Square Ft.		Extended Sq. Feet	Equipment			Notes	Department Summary	
	Current	Future	Office	Workstation		PC	Printer	Fax		Information:	
					0						
Finance					0						
					0						
Clerical	1	1		120	120	1	1				
					0						
					0						
					0						
					0						
					0						
					0						
					0						
					0						
					0						
Personnel Totals:	1	1			120	1	1	0			
SUPPORT/EQUIPMENT SPACES											
Space	Support/Equipment		Unit Square Feet		Extended Sq. Feet	Location		Notes	Department Notes:		
	Current	Future									
					0						
Finance					0						
File Drawers	50	2		1.8	3.6	Lockable room			5-Hi cabinets		
Equipment	1	1		120	120	Next to work area			3 Printers, shredder, work counter		
					0						
					0						
					0						
					0						
					0						
					0						
					0						
					0						
Support Totals:					123.6						

# Program – Administration

Account Admin										
PERSONNEL										
Position	Personnel Totals		Unit Square Ft.		Extended Sq. Feet	Equipment			Notes	Department Summary Information:
	Current	Future	Office	Workstation		PC	Printer	Fax		
Account Executive	4	1	120		120	9				Personnel 120 Square Ft.
					0					Equipment 354 Square Ft.
					0					Sub Total: 474 Square Ft.
					0					Circulation 1.54
					0					Total Carpetable: 730 Square Ft.
					0					
					0					
					0					
					0					
					0					
					0					
					0					
Personnel Totals:		1			120	9	0	0		
SUPPORT/EQUIPMENT SPACES										
Space	Support/Equipment		Unit Square Feet	Extended Sq. Feet	Location	Notes	Department Notes:			
	Current	Future								
File Drawers	10	30	3	90	Near Admin Assts	3-Hi cabinets				
Equipment	1	1	64	64	Near Admin Assts	Copier, work counter				
Digital Storage	0	1	100	100		Shelving; can be spread throughout				
Storage	0	1	100	100		Lockable room; shelving				
				0						
				0						
				0						
				0						
				0						
Support Totals:				354						

# Program – Account Administration



Creative Services									
PERSONNEL									
Position	Personnel Totals		Unit Square Ft.		Extended Sq. Feet	Equipment			Notes
	Current	Future	Office	Workstation		PC	Printer	Fax	
					0				
workers		80		36	2880				
					0				
					0				
					0				
					0				
					0				
					0				
					0				
					0				
					0				
					0				
					0				
Personnel Totals:	0	80			2880	0	0	0	
SUPPORT/EQUIPMENT SPACES									
Space	Support/Equipment		Unit Square Feet	Extended Sq. Feet	Location	Notes			
	Current	Future							
				0					
				0					
				0					
Concept Lounge	0	1	500	500					
Work Area	0	0	1800	0	Adjacent to Teams	Work counters			
Storage	0	1	200	200	Next to Work Area	Shelving			
				0					
				0					
				0					
				0					
				0					
Support Totals:				700					

**Department Summary Information:**

Personnel	2880	Square Ft.
Equipment	700	Square Ft.
<b>Sub Total:</b>	<b>3580</b>	<b>Square Ft.</b>
Circulation	1.54	
<b>Total Carpetable:</b>	<b>5513.2</b>	<b>Square Ft.</b>

**Interviewee:**

**Interview Date:**

**Revision Submitted:**

**Sign Off:**

# Program – Creative Services

Support									
PERSONNEL									
Position	Support/Equipment		Unit Square Ft.	Extended Sq. Feet	Location	Notes	Department Summary Information:		
	Current	Future					Personnel	Equipment	Sub Total:
				0			0	2175	1.54
				0					
				0					
				0					
				0					
				0					
				0					
				0					
				0					
				0					
				0					
				0					
				0					
				0					
				0					
				0					
Personnel Totals:	0	0		0					
SUPPORT/EQUIPMENT SPACES									
Space	Support/Equipment		Unit Square Feet	Extended Sq. Feet	Location	Notes	Department Notes:		
	Current	Future					Personnel	Equipment	Sub Total:
				0					
Reception	1	1	300	300	Direct access to Broadcast, Executive, Mktg	Waiting for 6, TV's			
				0					
Conference Room	1	2	300	600	Shared by all areas	Full AV			
				0					
Computer Service Area	0	1	80	80		Work counter, outlets			
Computer Server Room	1	1	80	80	Near Acount Admin	Raised floor, secure, 3 racks			
Copy/Fax Station	1	2	120	240	Spread throughout	Work counter			
Pantry	1	1	100	100	Spread throughout	Coffee, sink, refrigerator, cabinets			
Lunch Room	0	1	400	400		Full kitchen, seating			
				0					
Coats	40	75	1	75	Spread throughout				
Mechanical Room	0	1	300	300	Near Base Building air supply	Supplemental Air			
				0					
Support Totals:				2175					

# Program – Support

# Portfolio Two

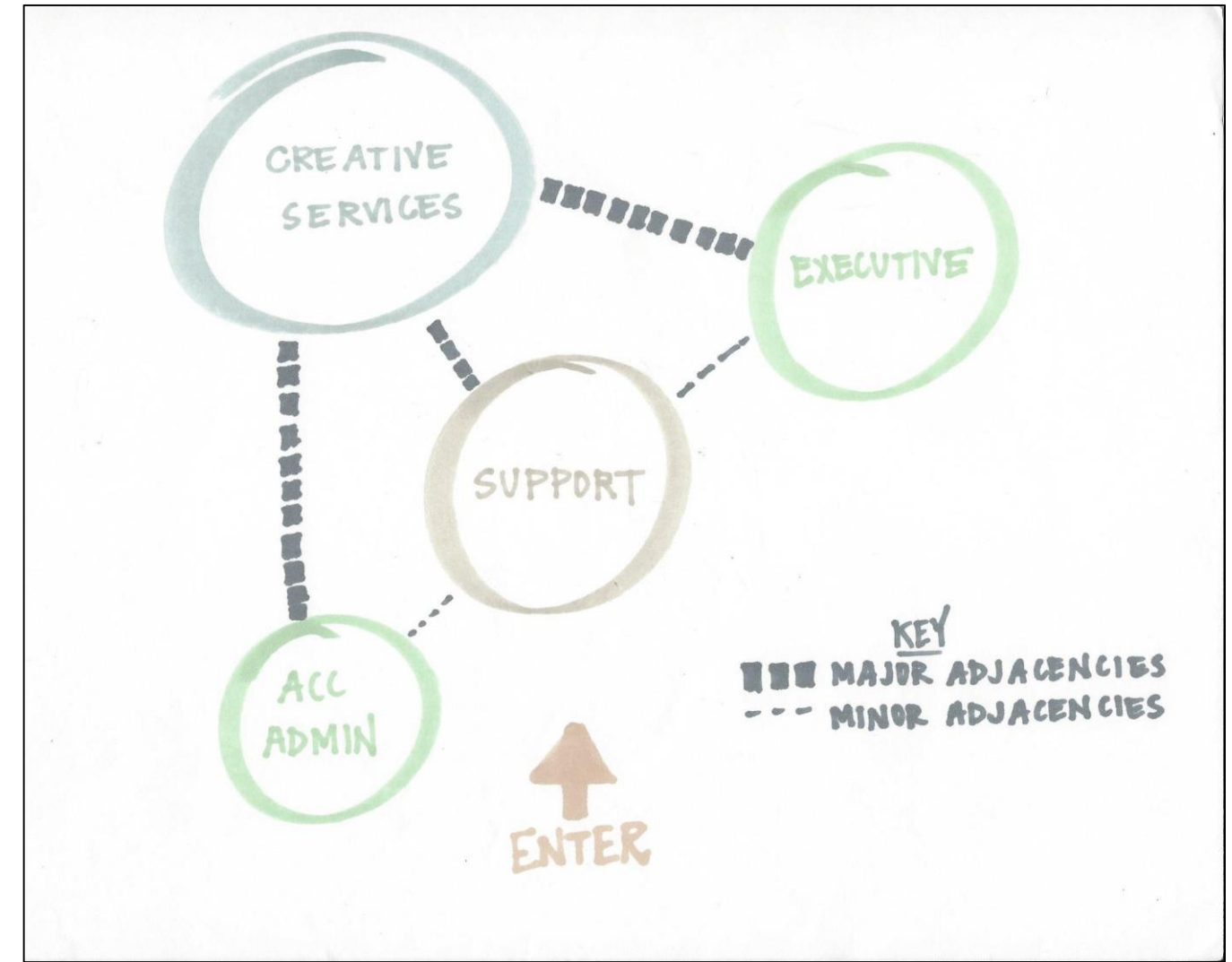
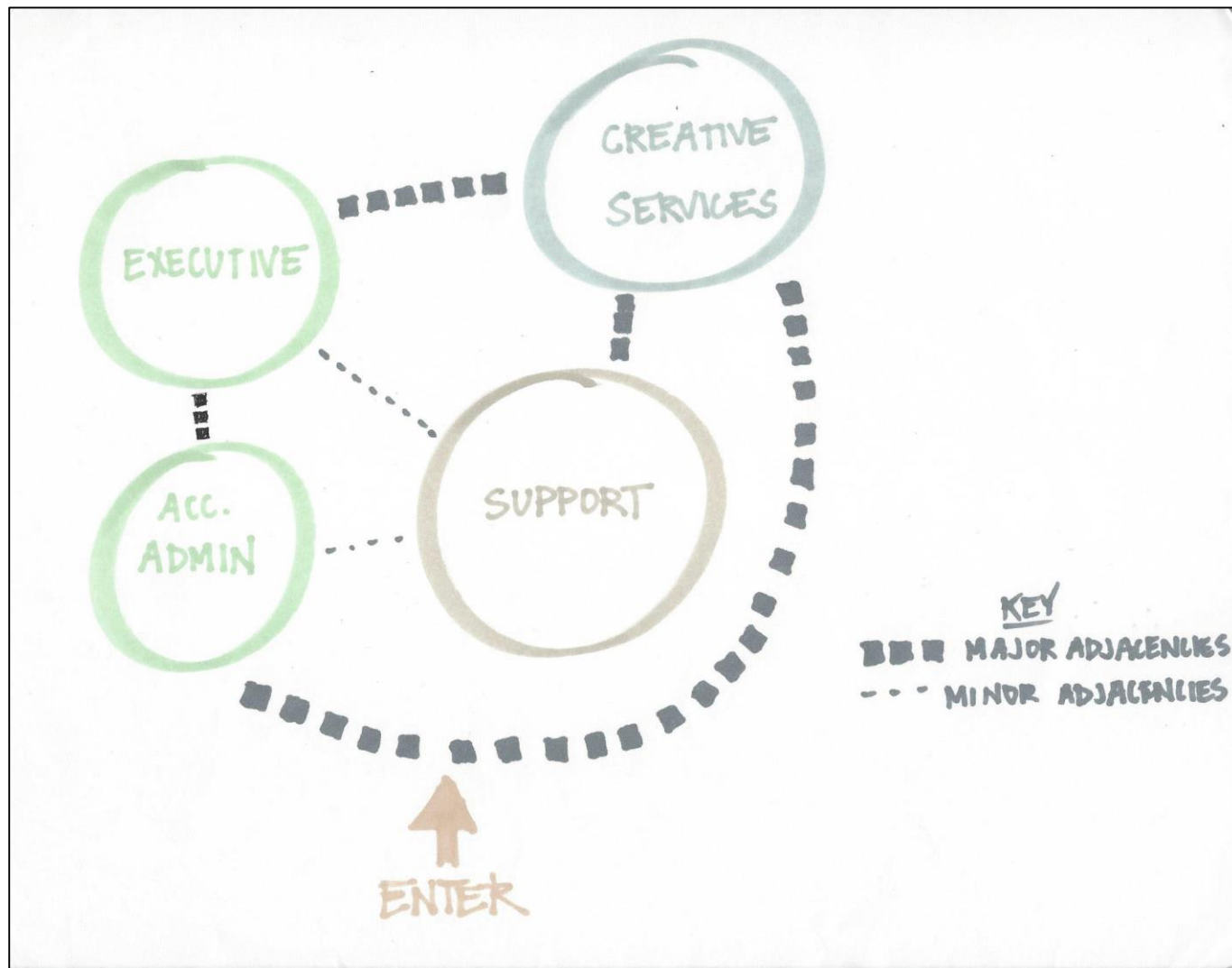
Scarlett Salter

Edgeworth Building, Richmond, VA

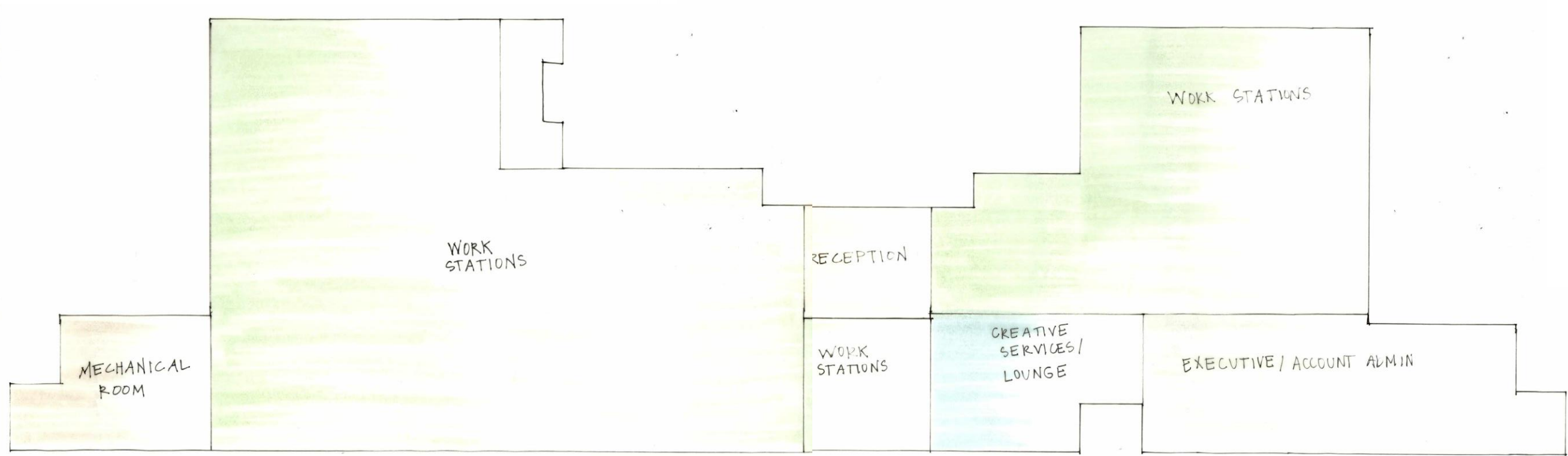
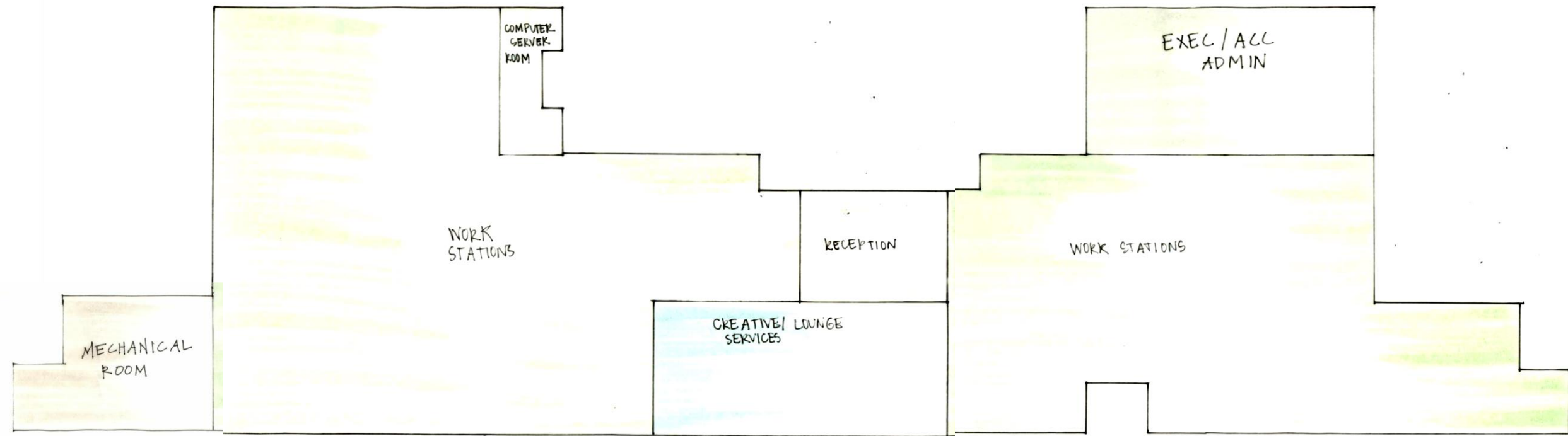
Fall 2015

---

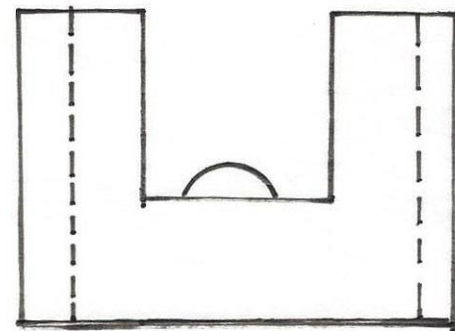
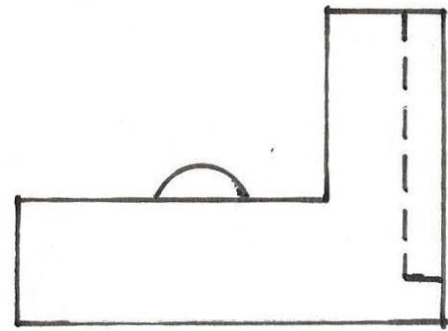




Bubble Diagrams

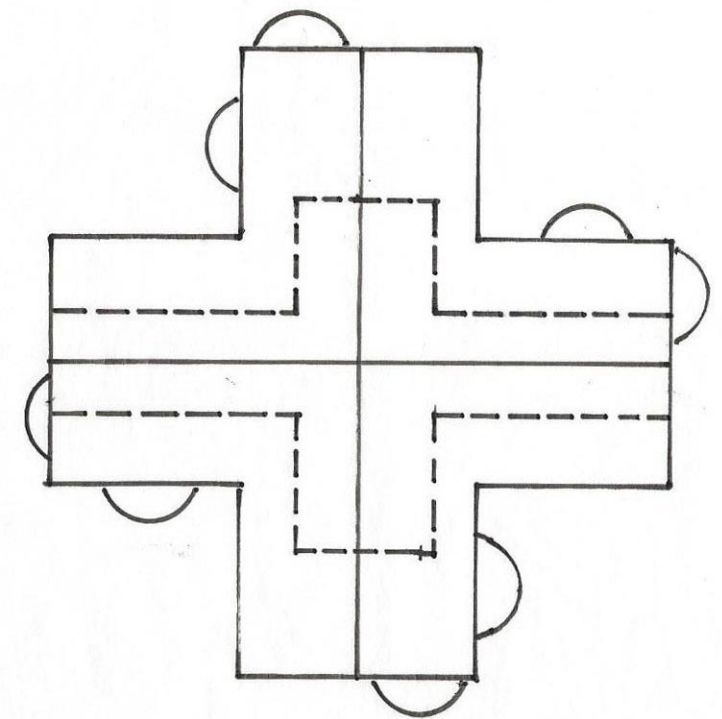
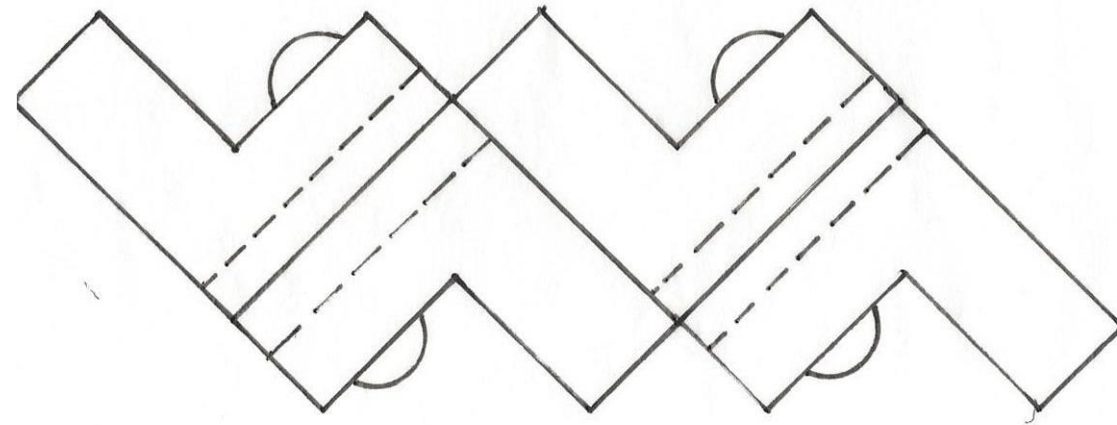


# Blocking Diagrams

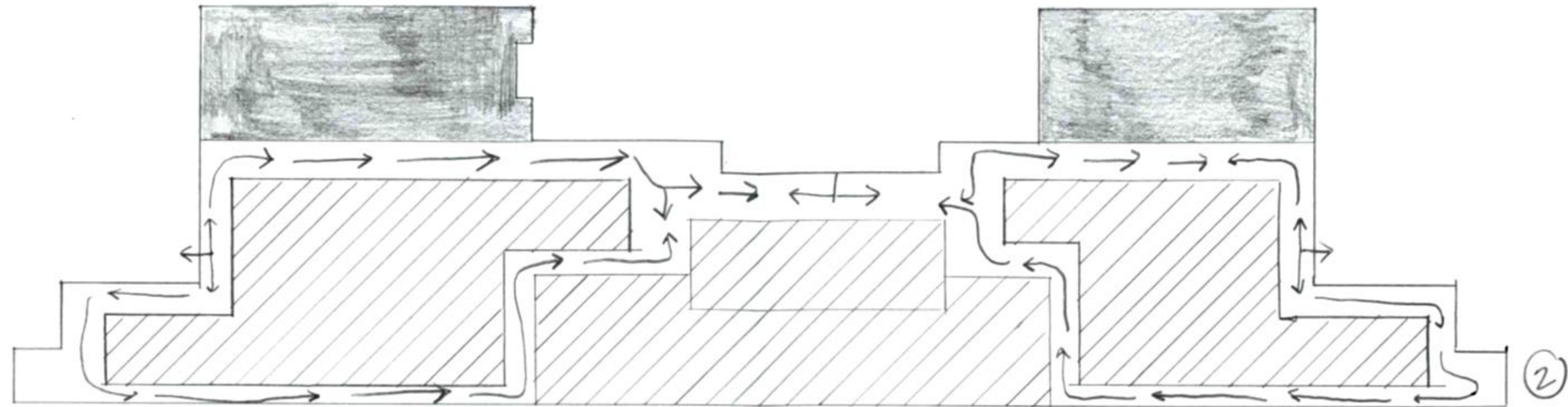
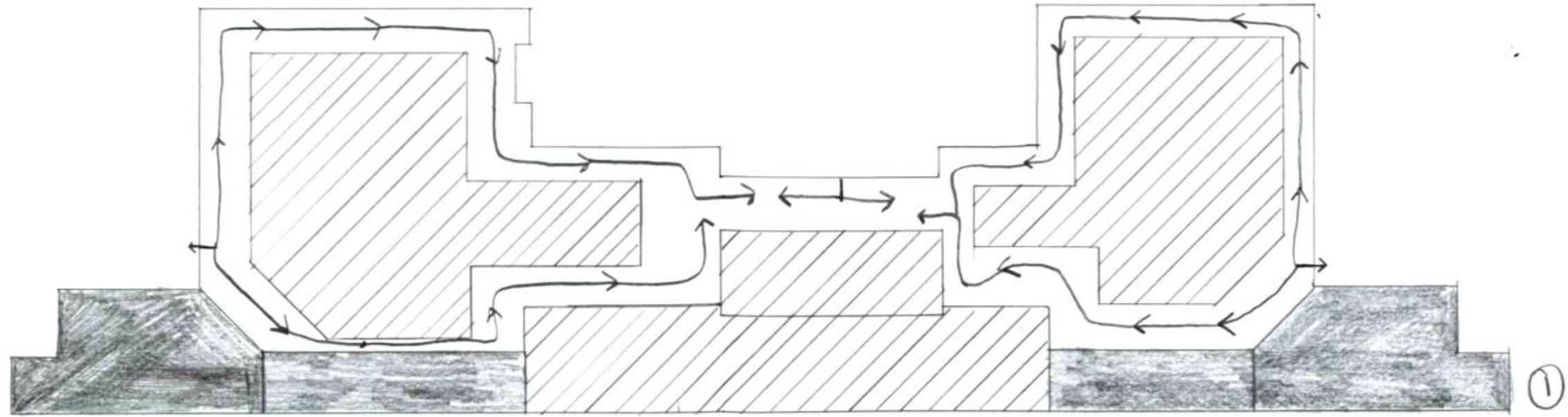


Large Office Desks  
Configurations

Workstation  
Configurations



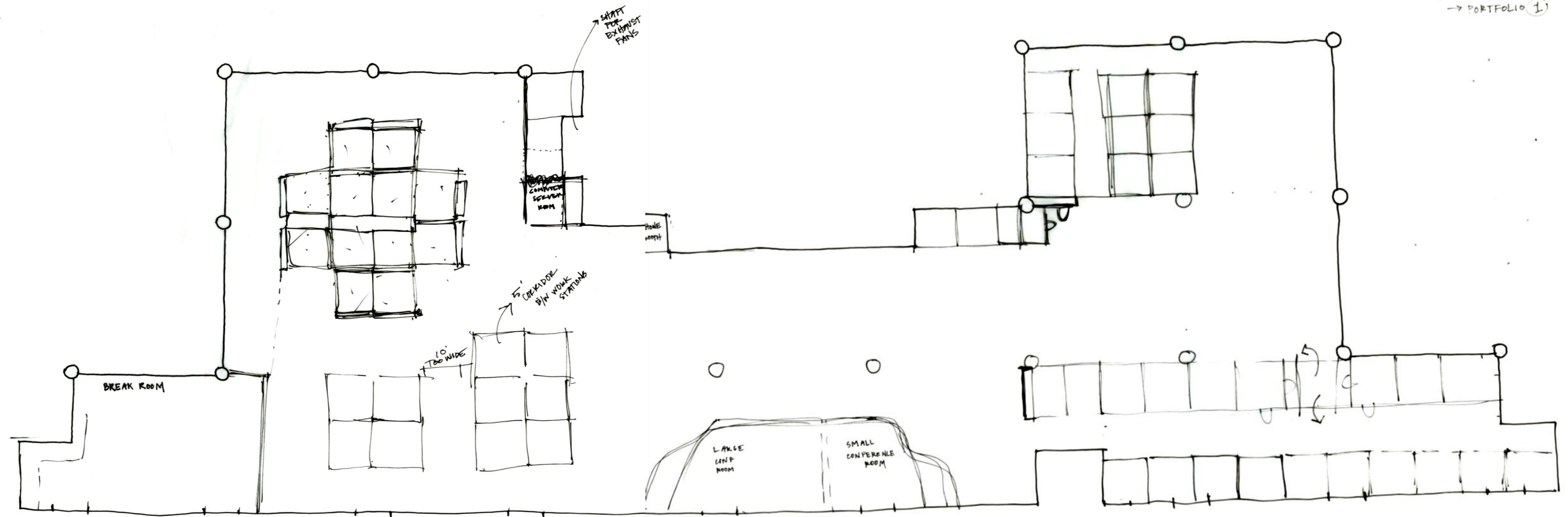




Space Circulation

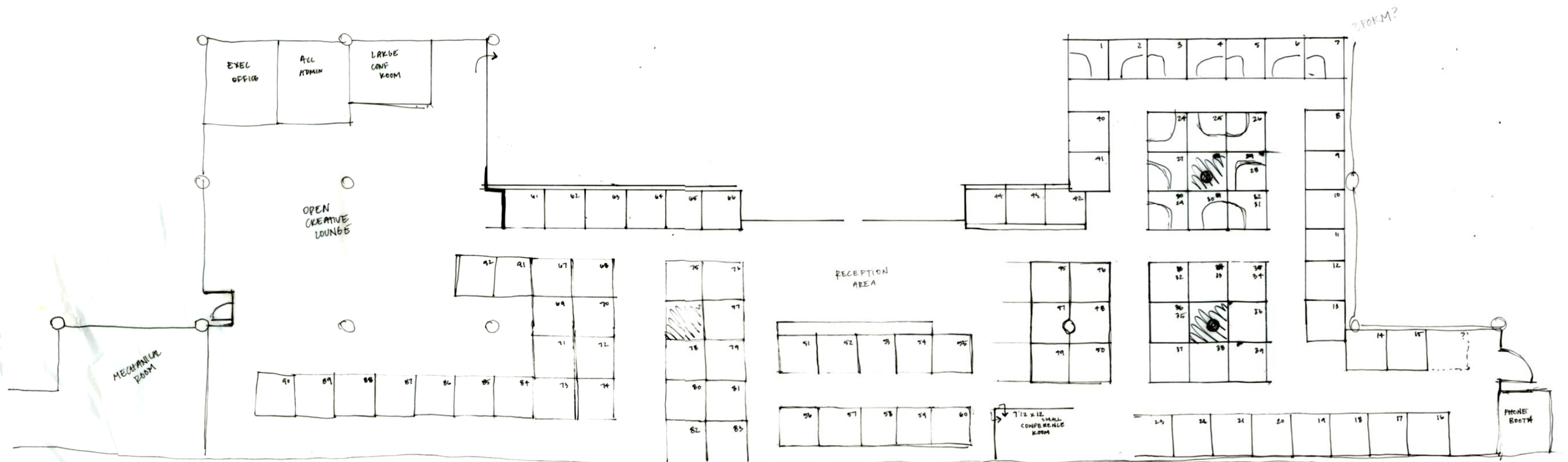
EDGEWORTH CO-WORKING  
3RD LEVEL ①

24<sup>th</sup> THURSDAY  
→ PORTFOLIO ①



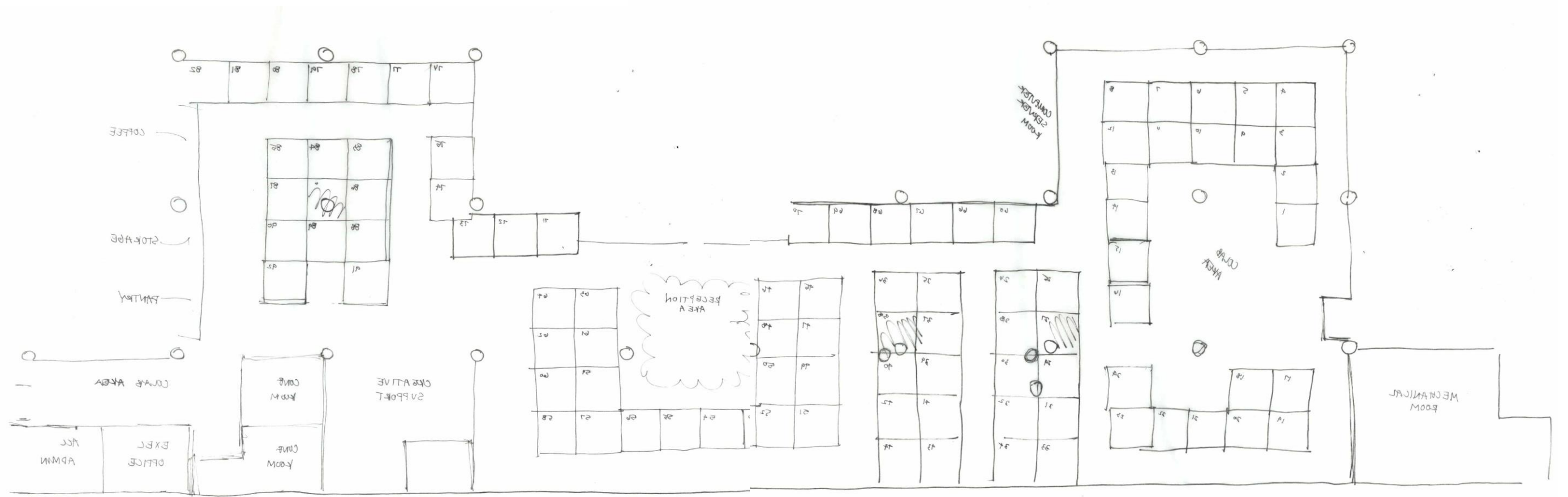
Space Plan Sketch - 1

EDGEWORTH  
WORK STATION LAYOUT!

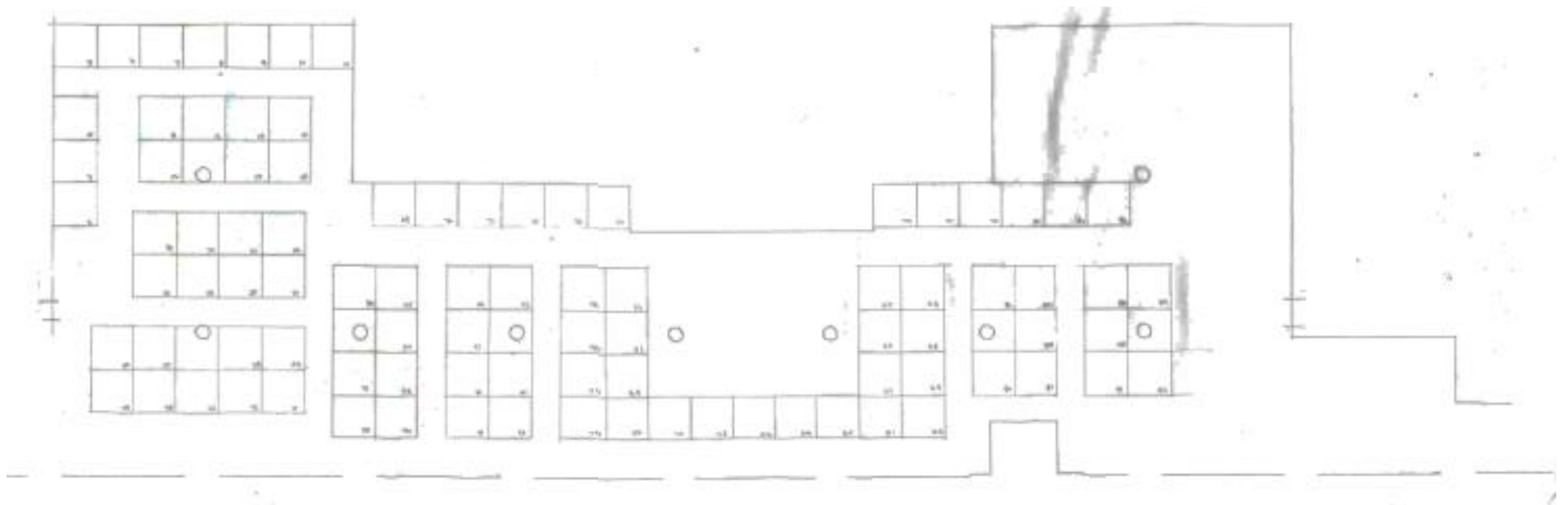


Space Plan Sketch - 2





Space Plan Sketch - 3



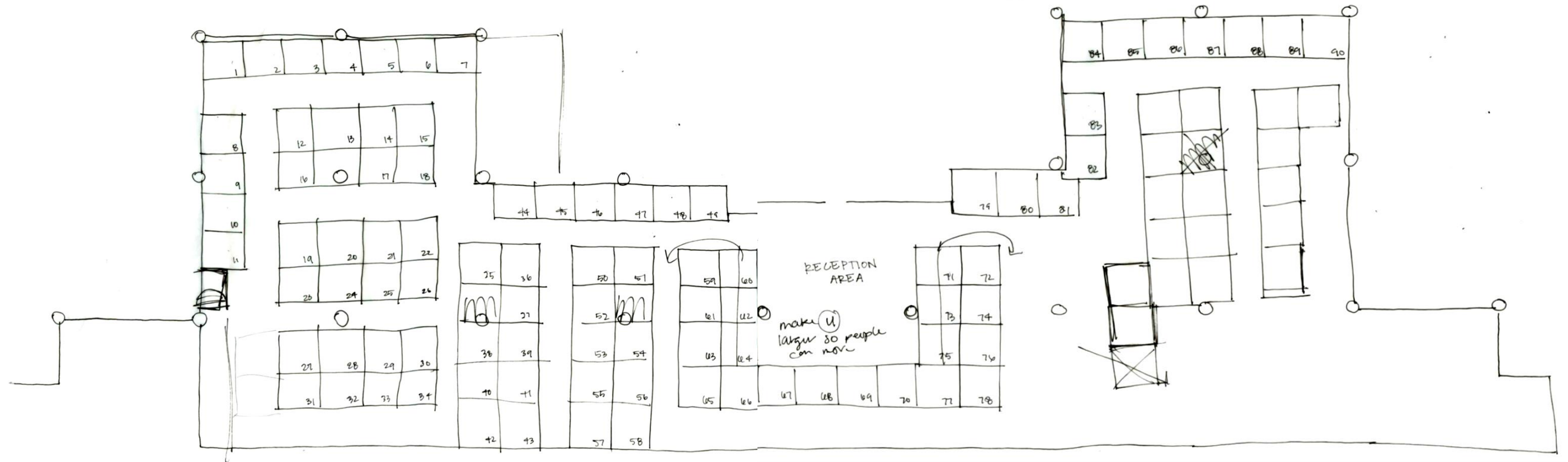
Space Plan Sketch - 4

EDGEWORTH LAYOUTS ③  
WORK STATION

RICHMOND TRAIN  
MAIN ST. Station  
EGGFLAN BLDG  
MLV  
CAPITAL BLDG. KVA

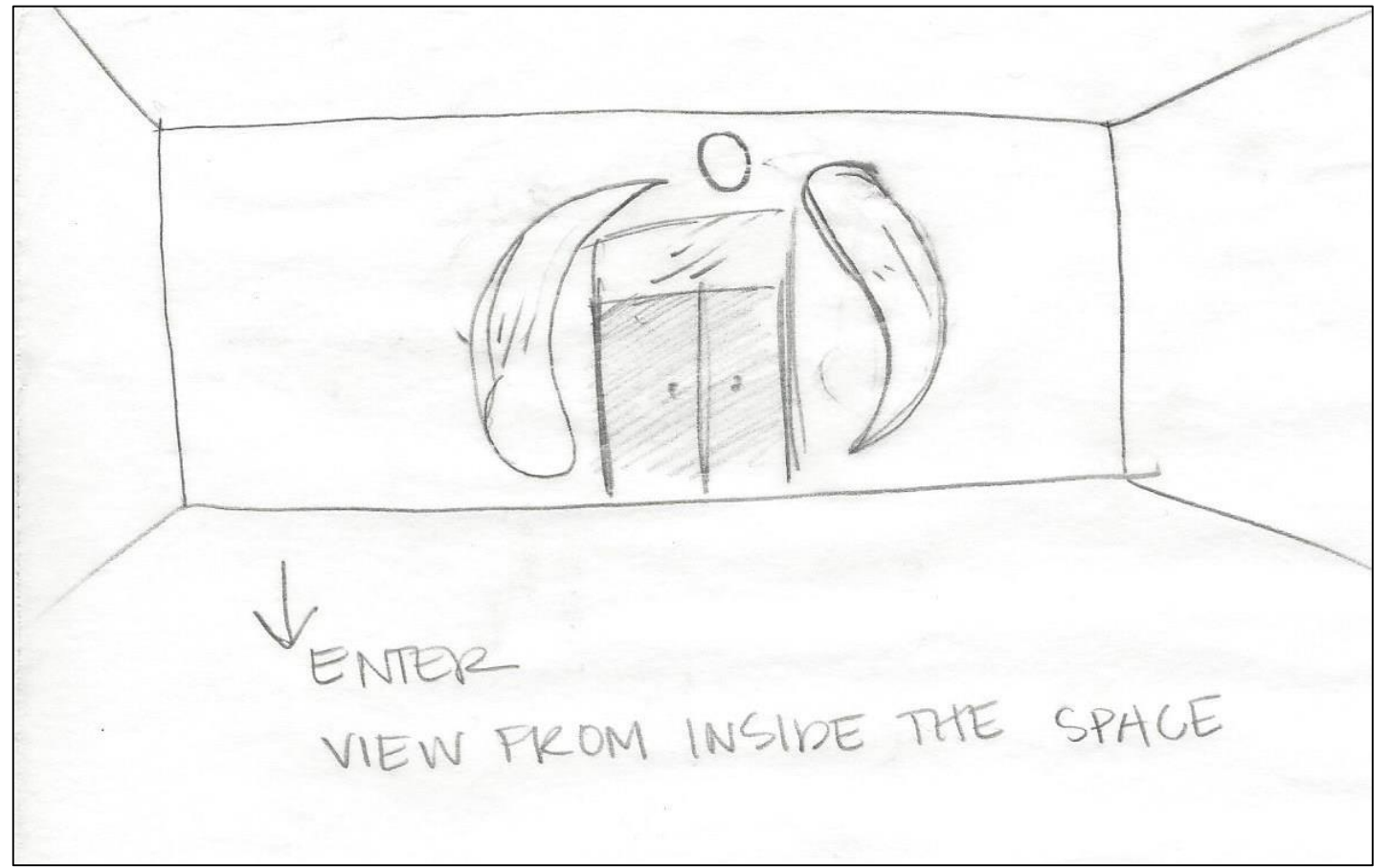
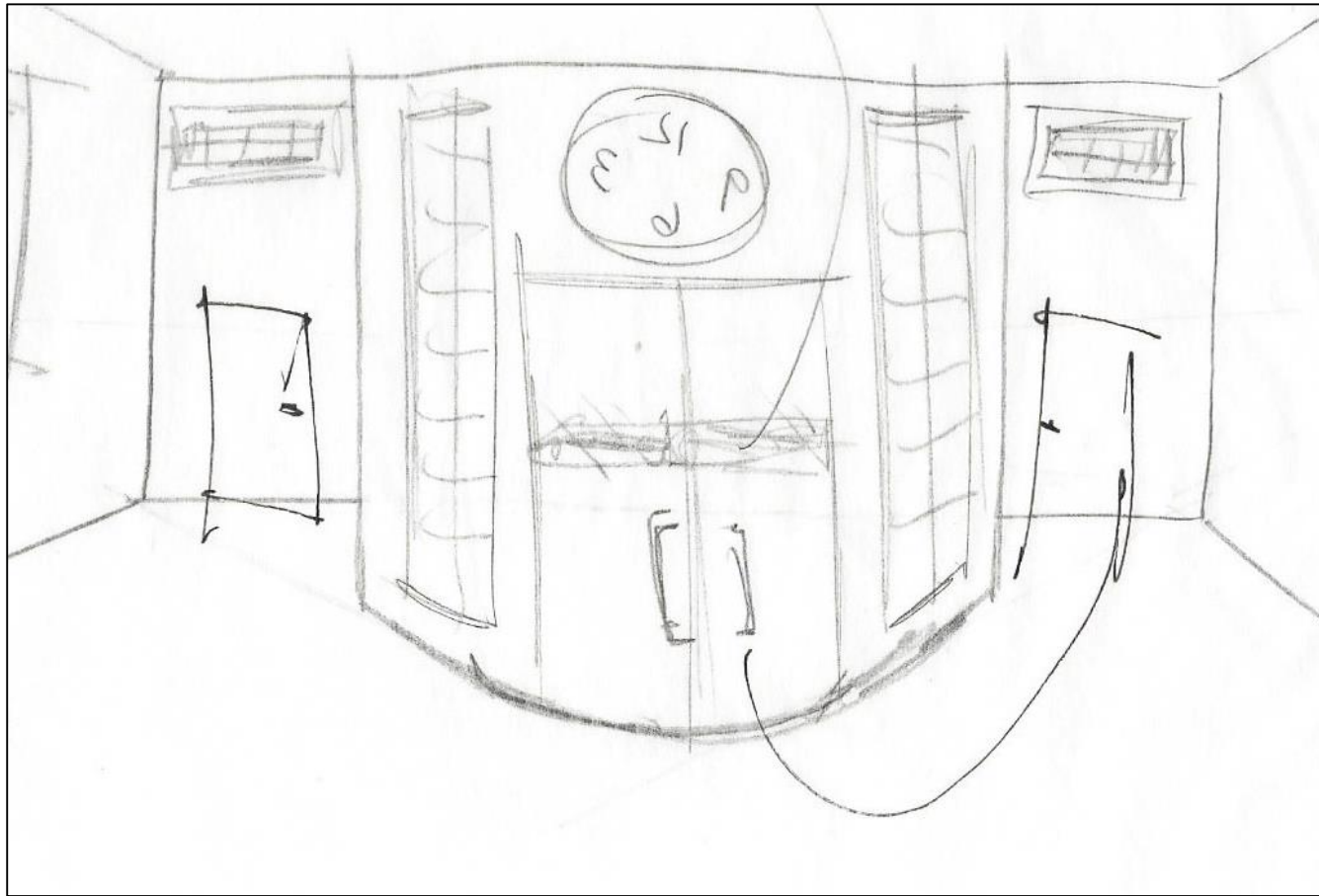
How do the  
ideas  
carry through  
the space

MAYMONT - HOUSE WORKS  
RIVER

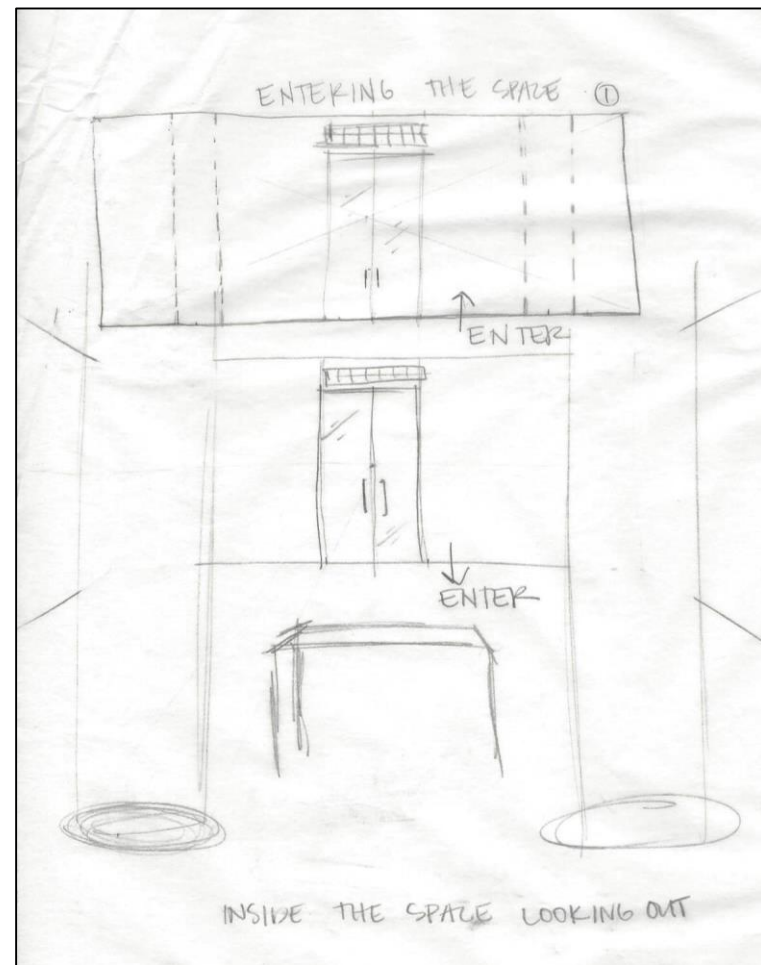
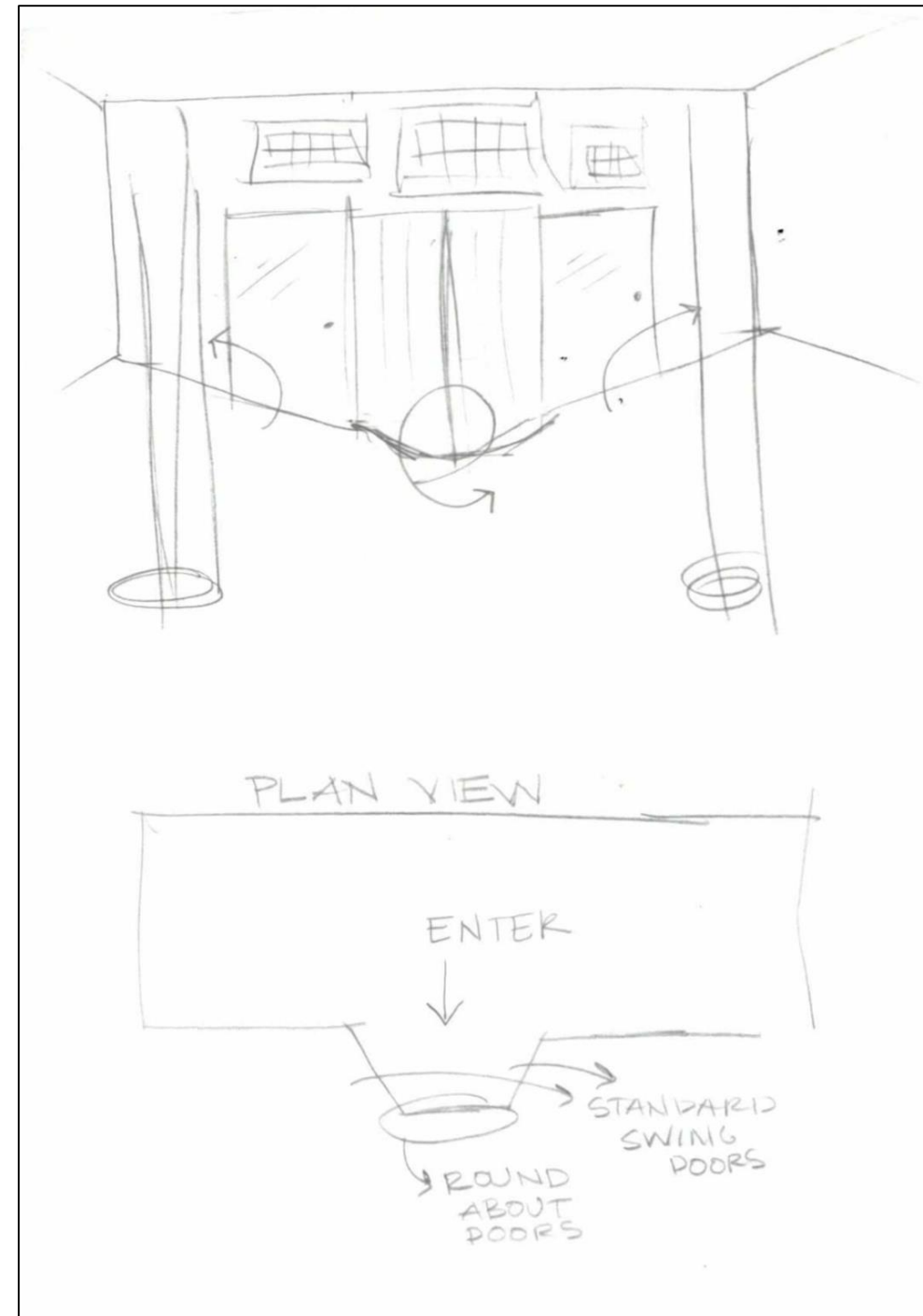
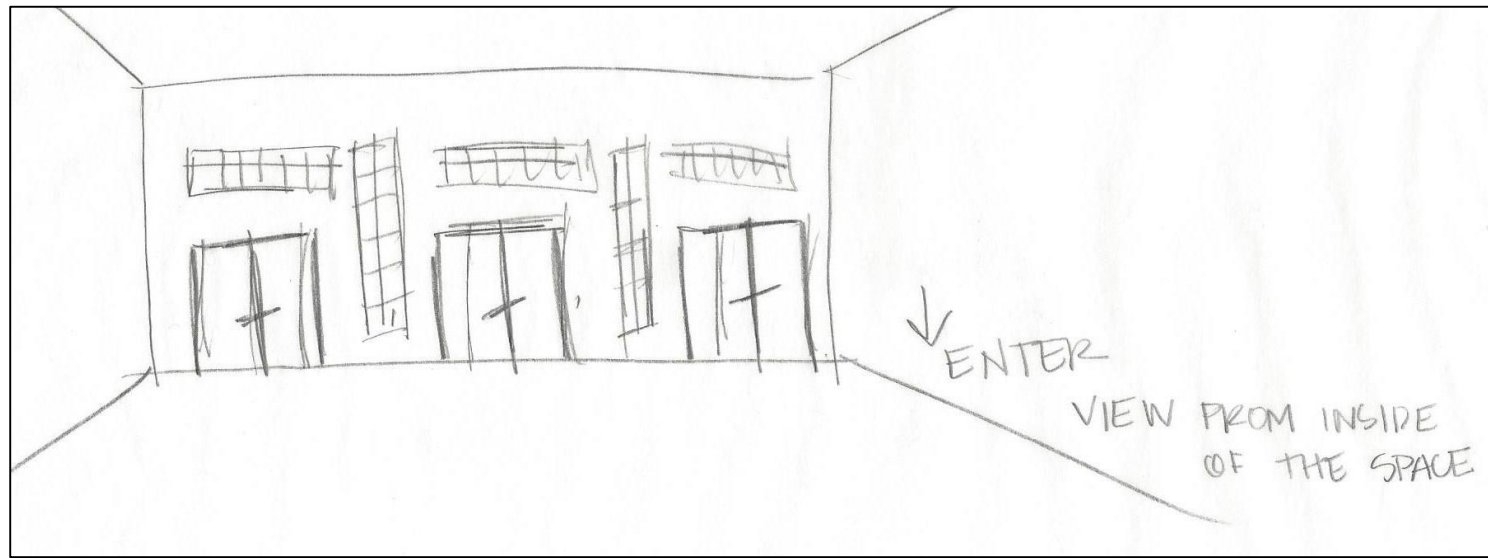


Space Plan Sketch - 5

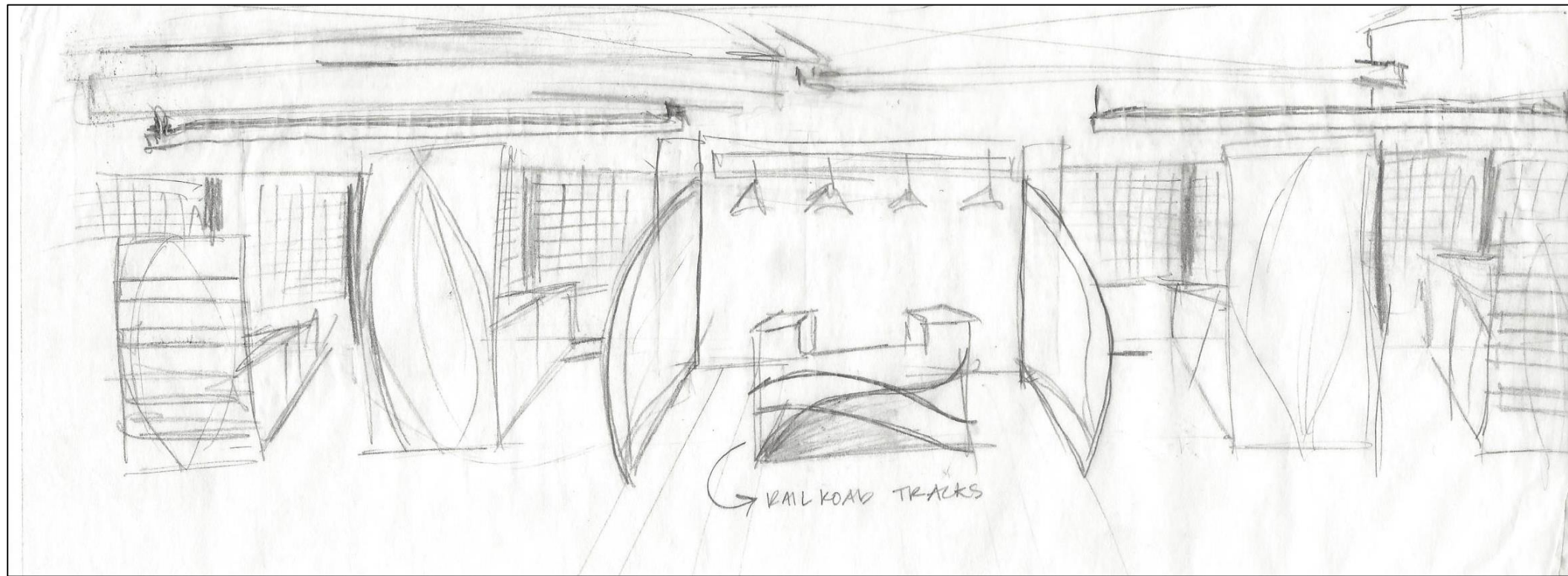
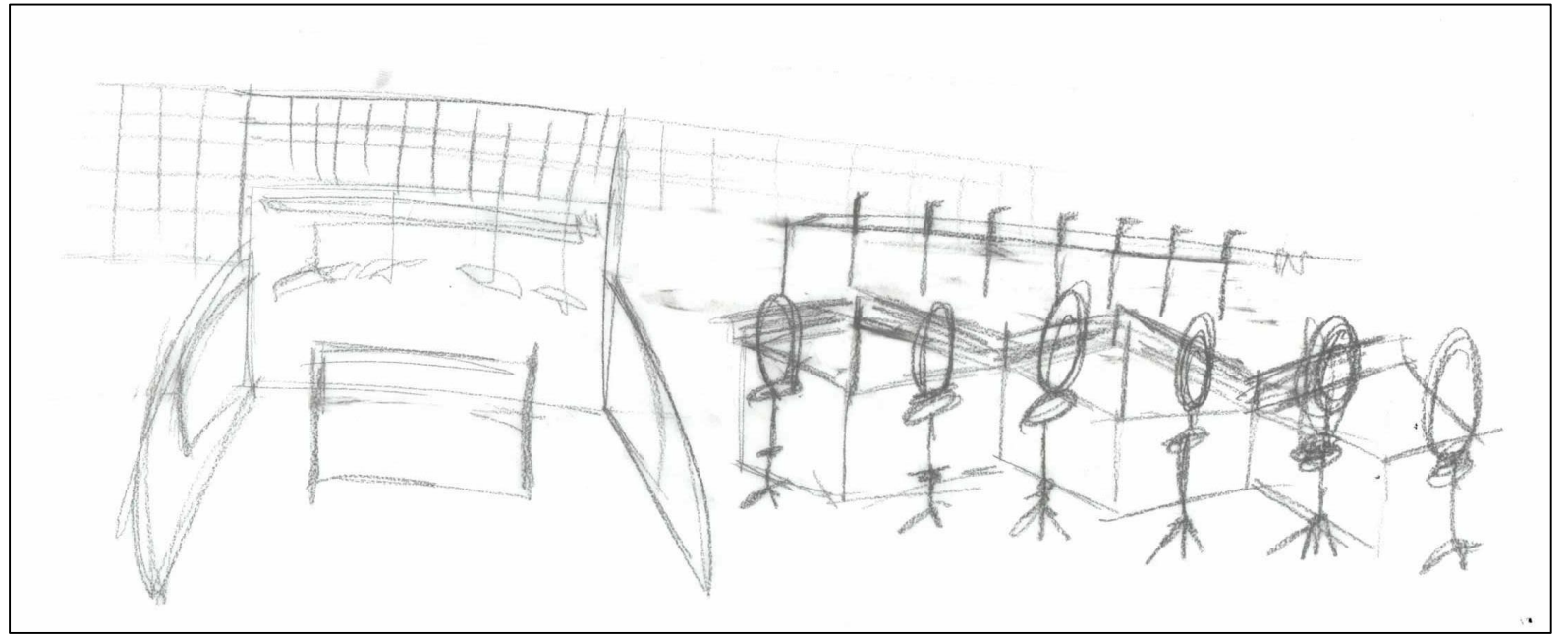
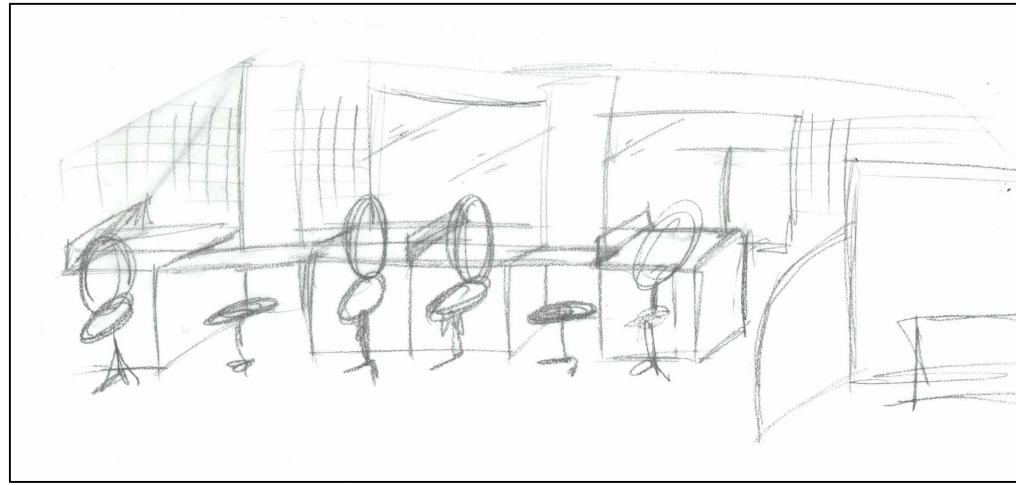




Entry Sketches

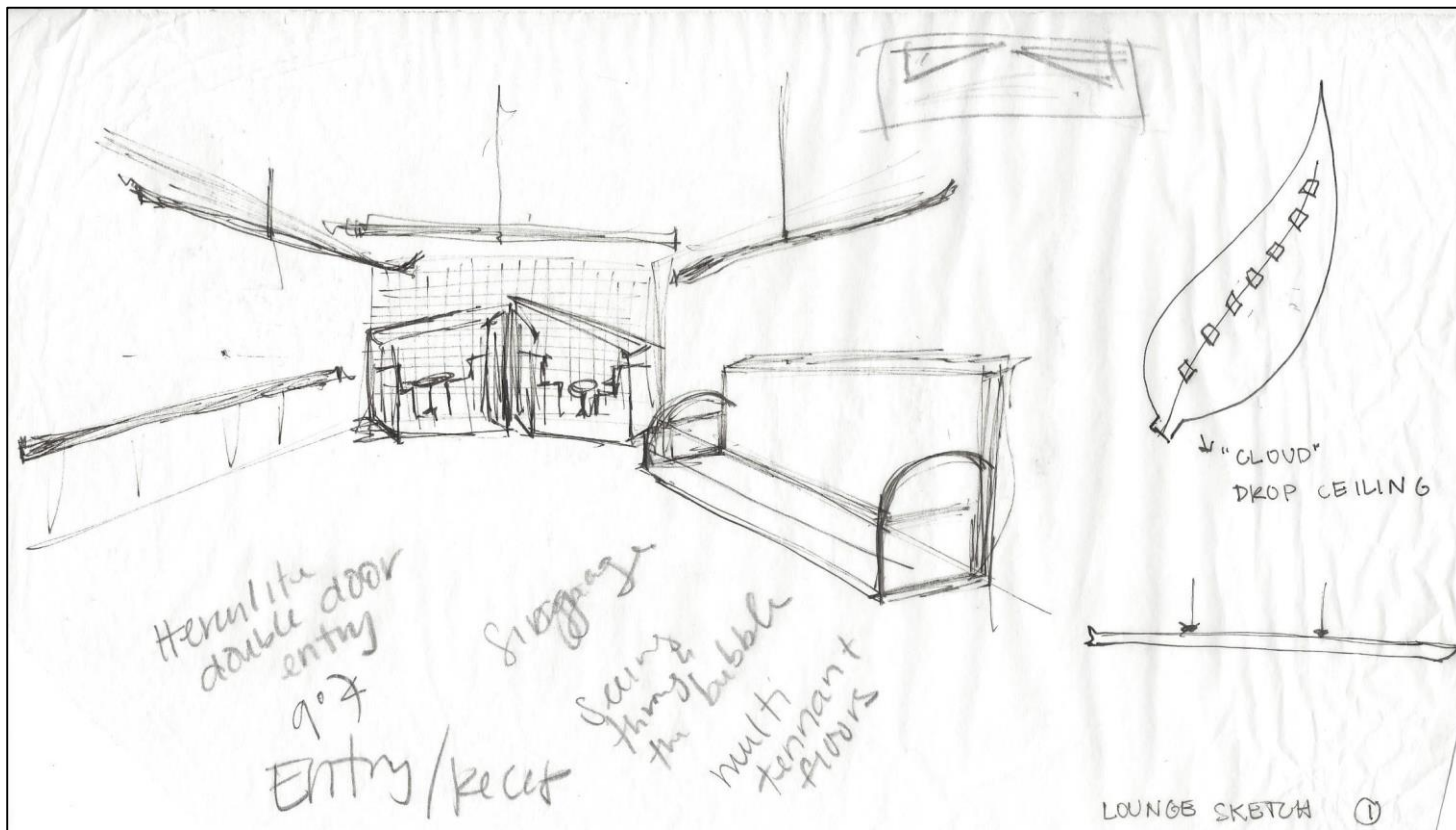
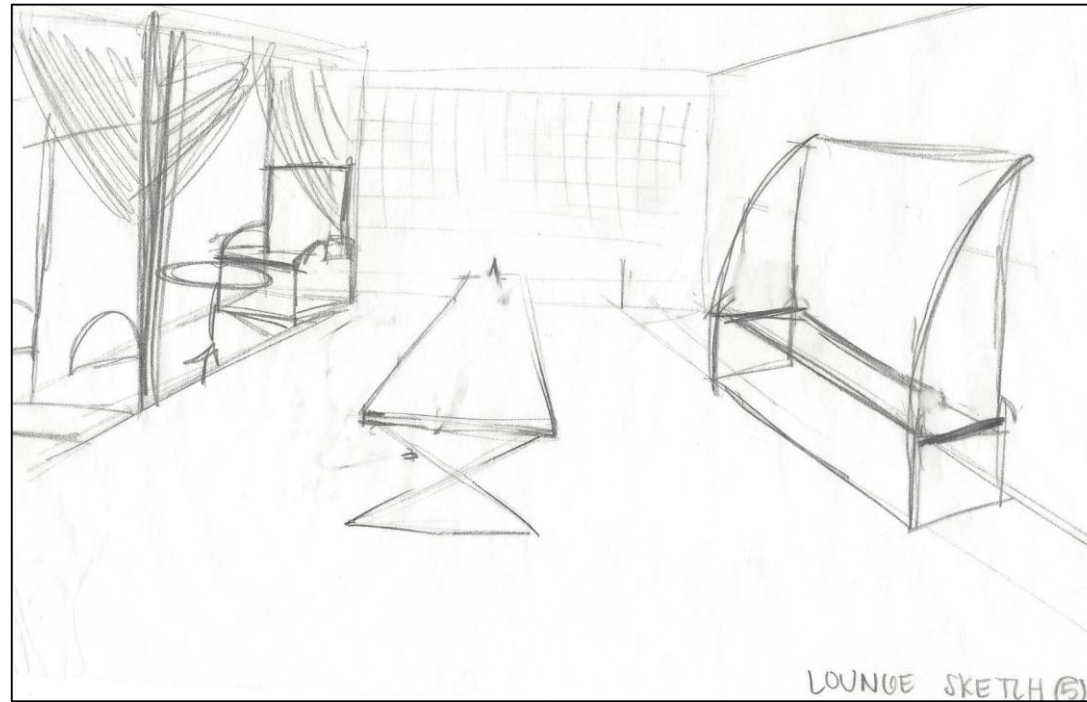


Entry Sketches

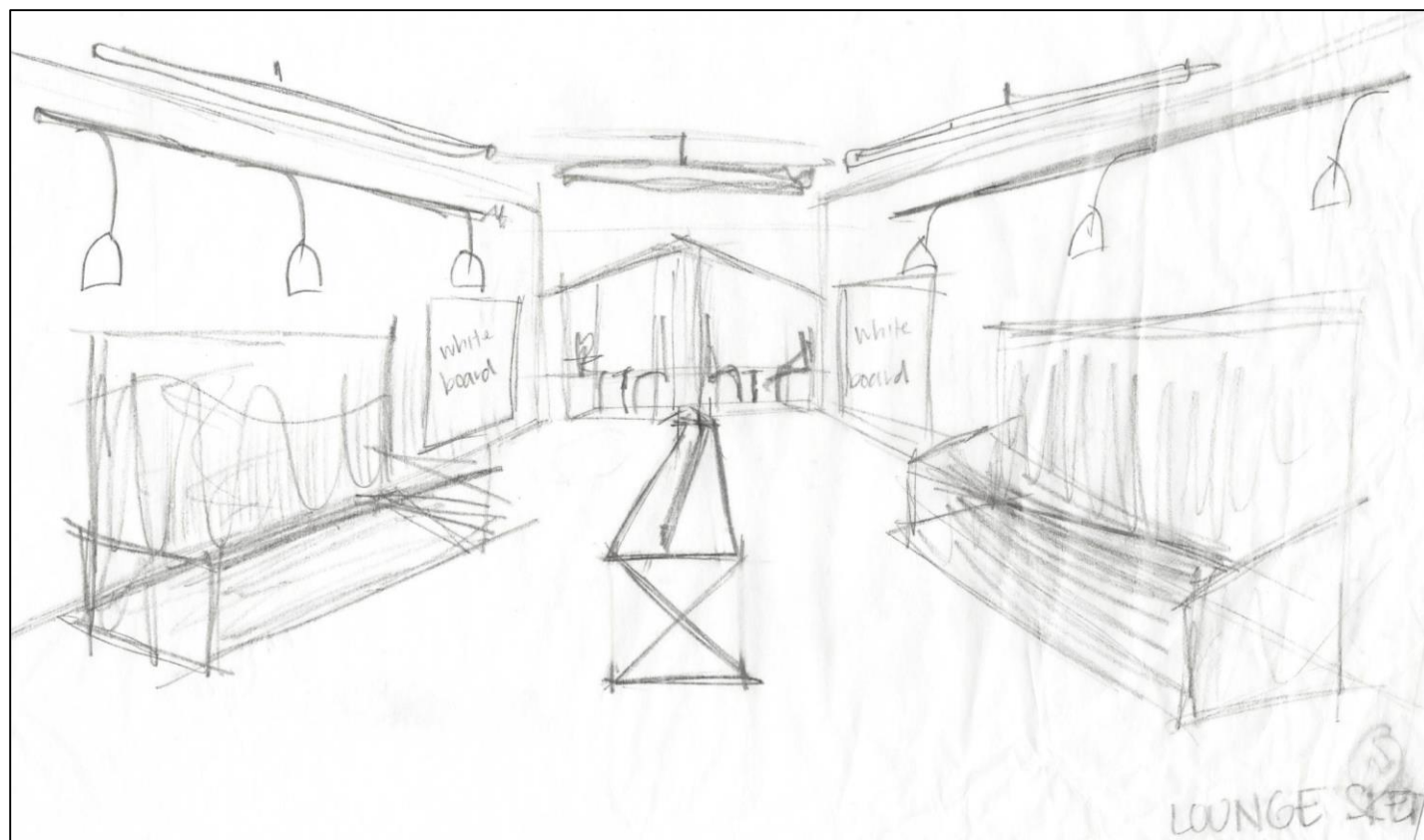
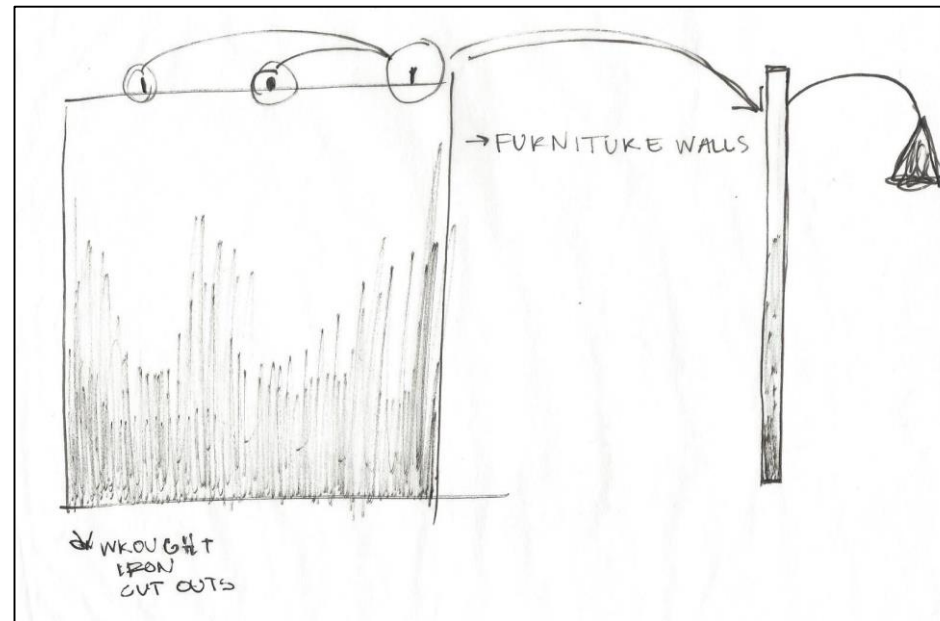
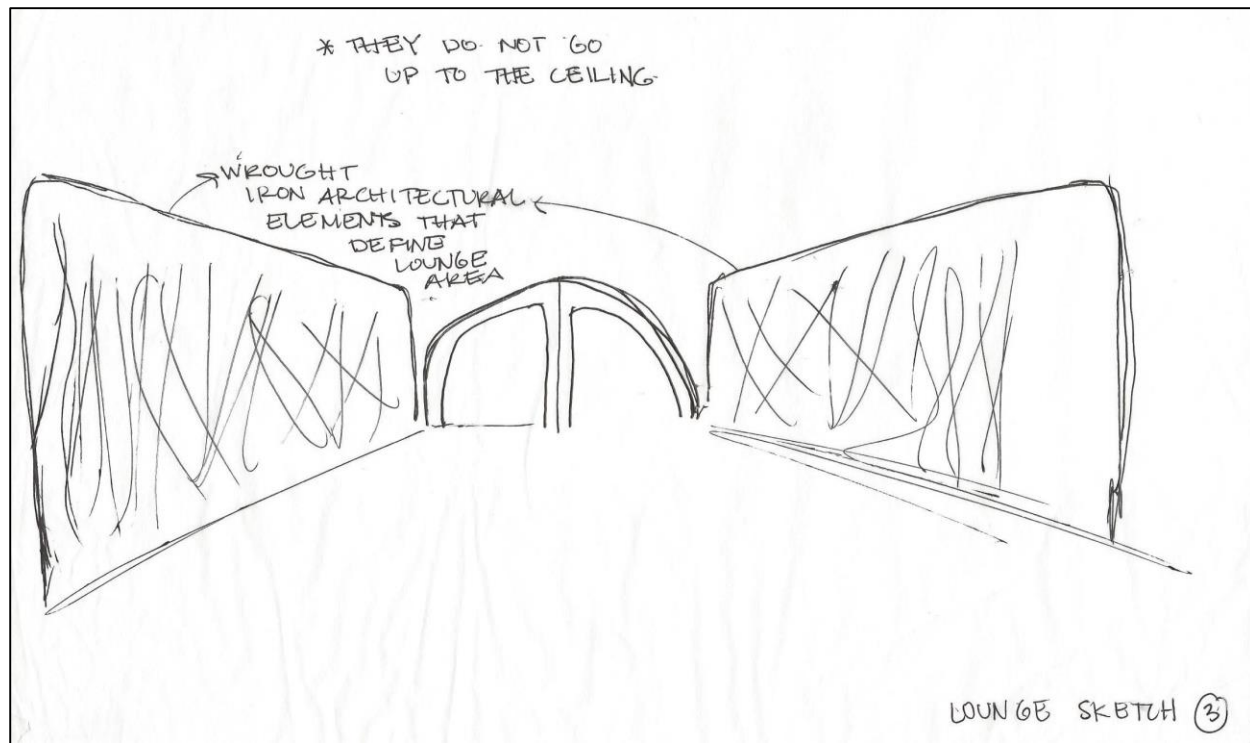


Corridor Sketches



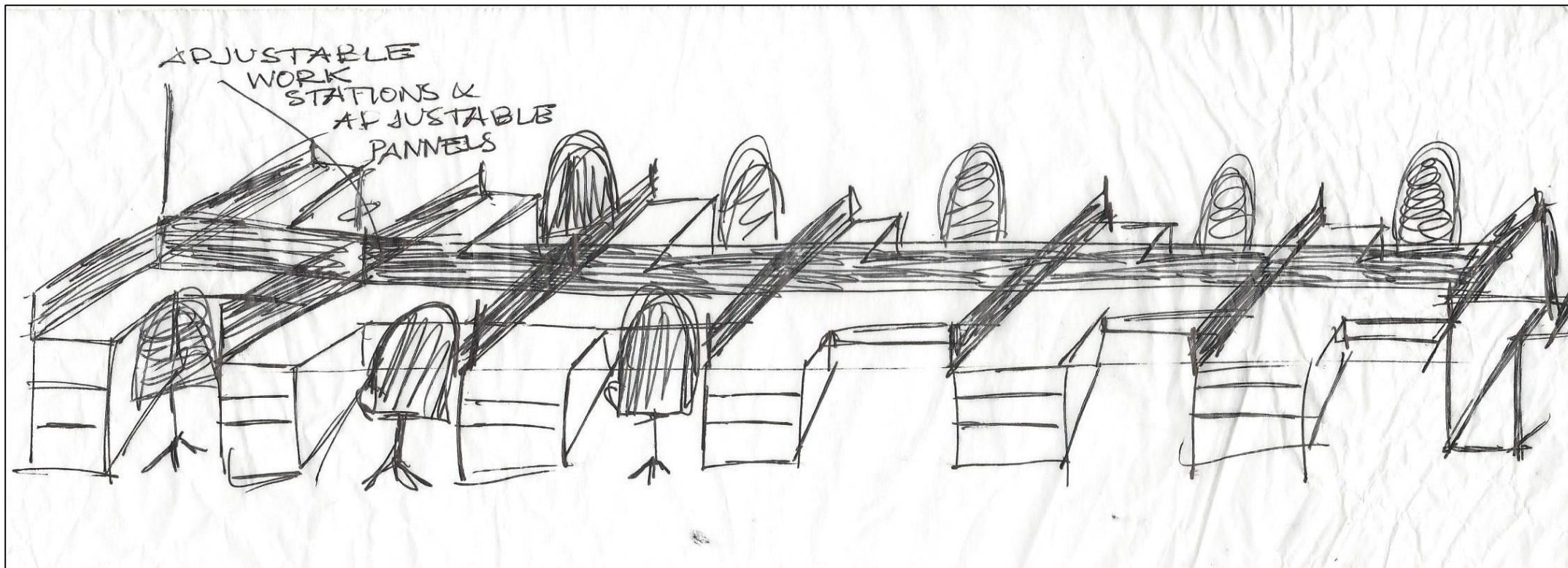
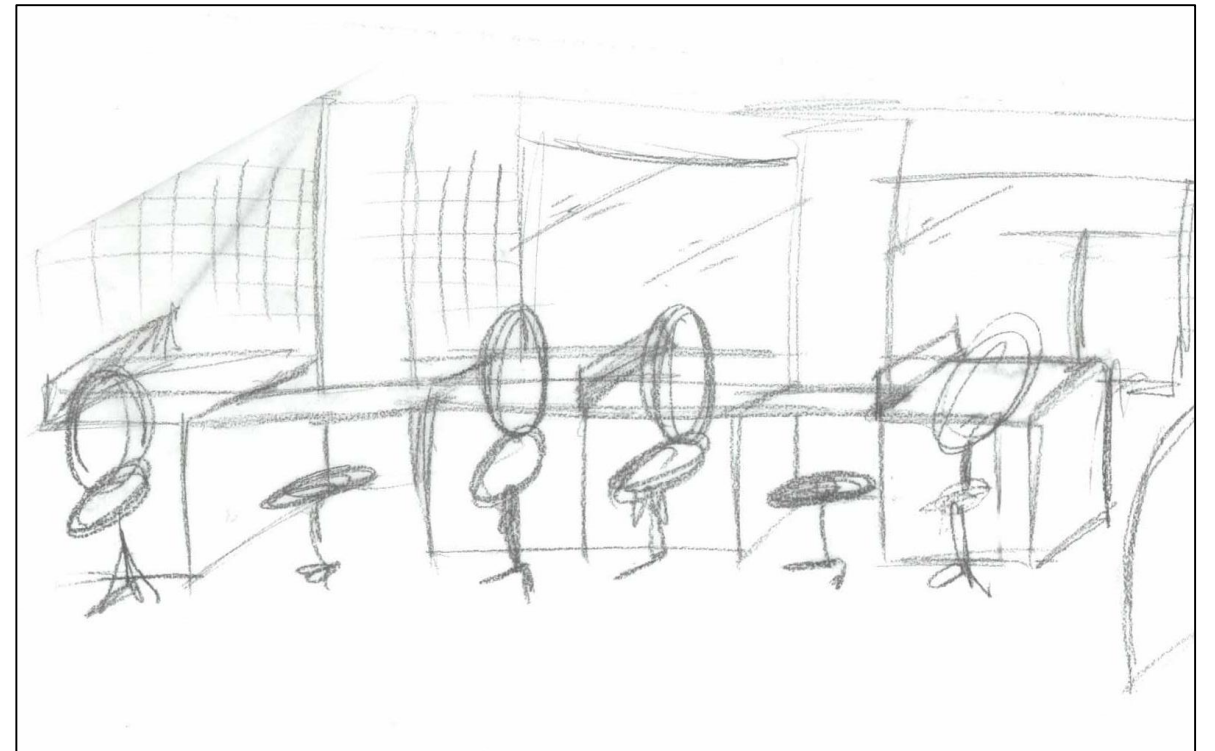
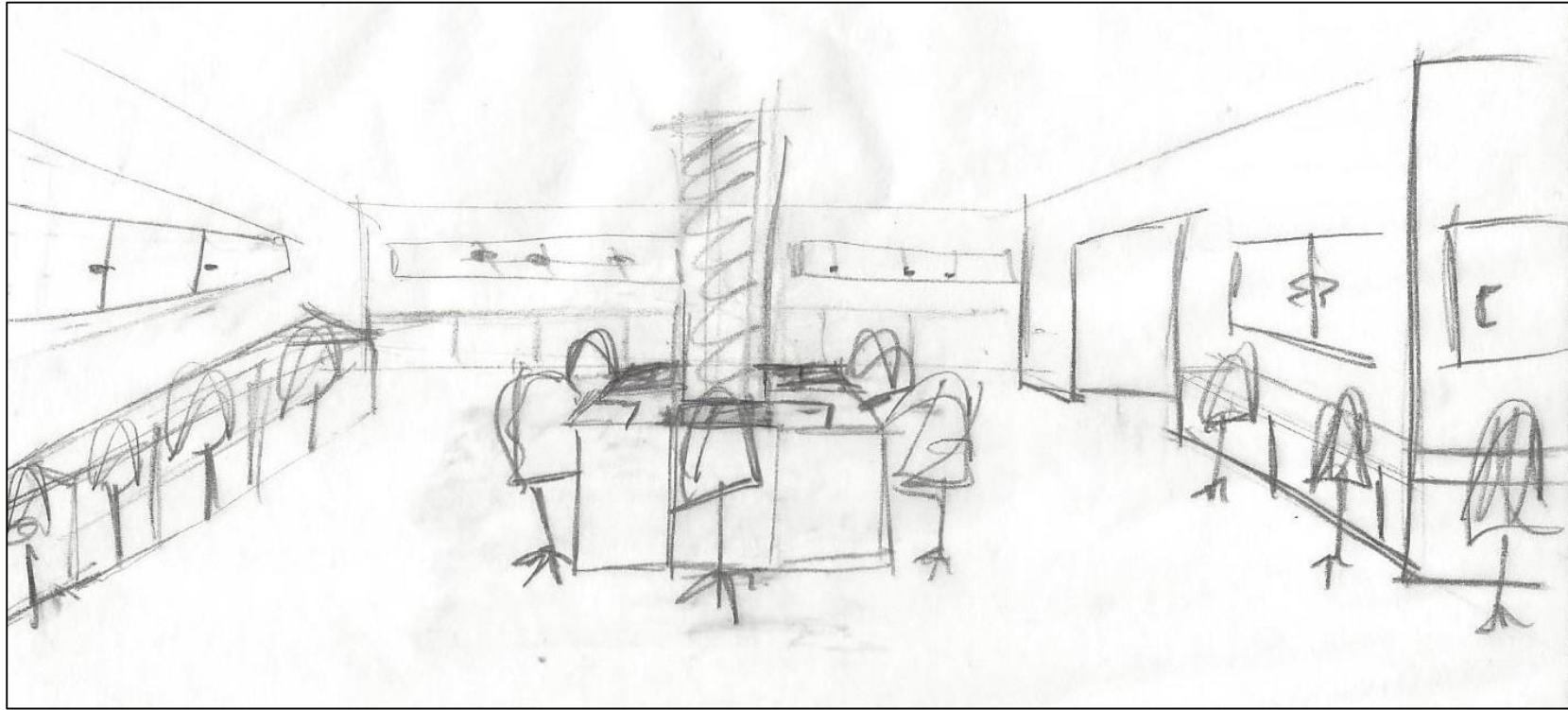


# Lounge Sketches



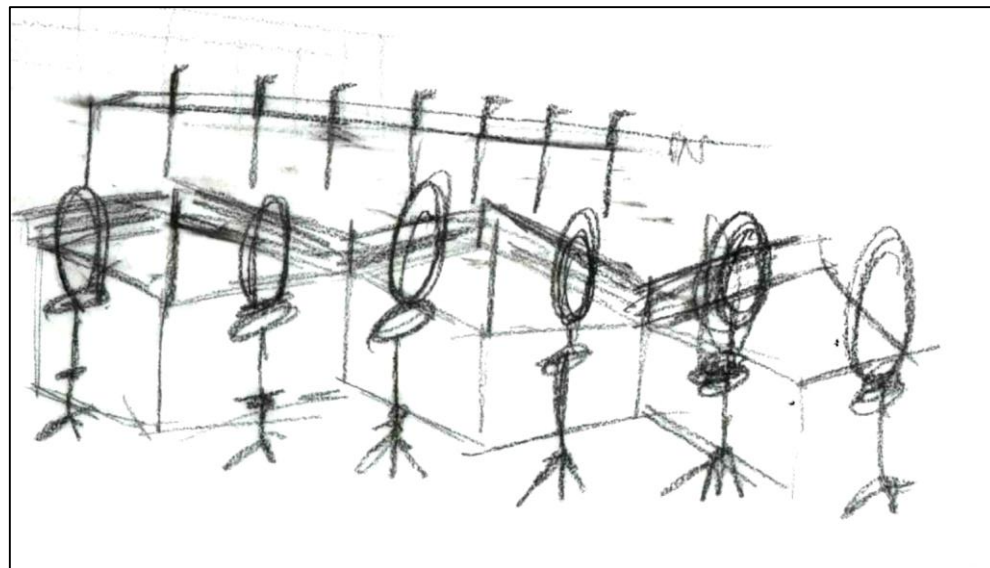
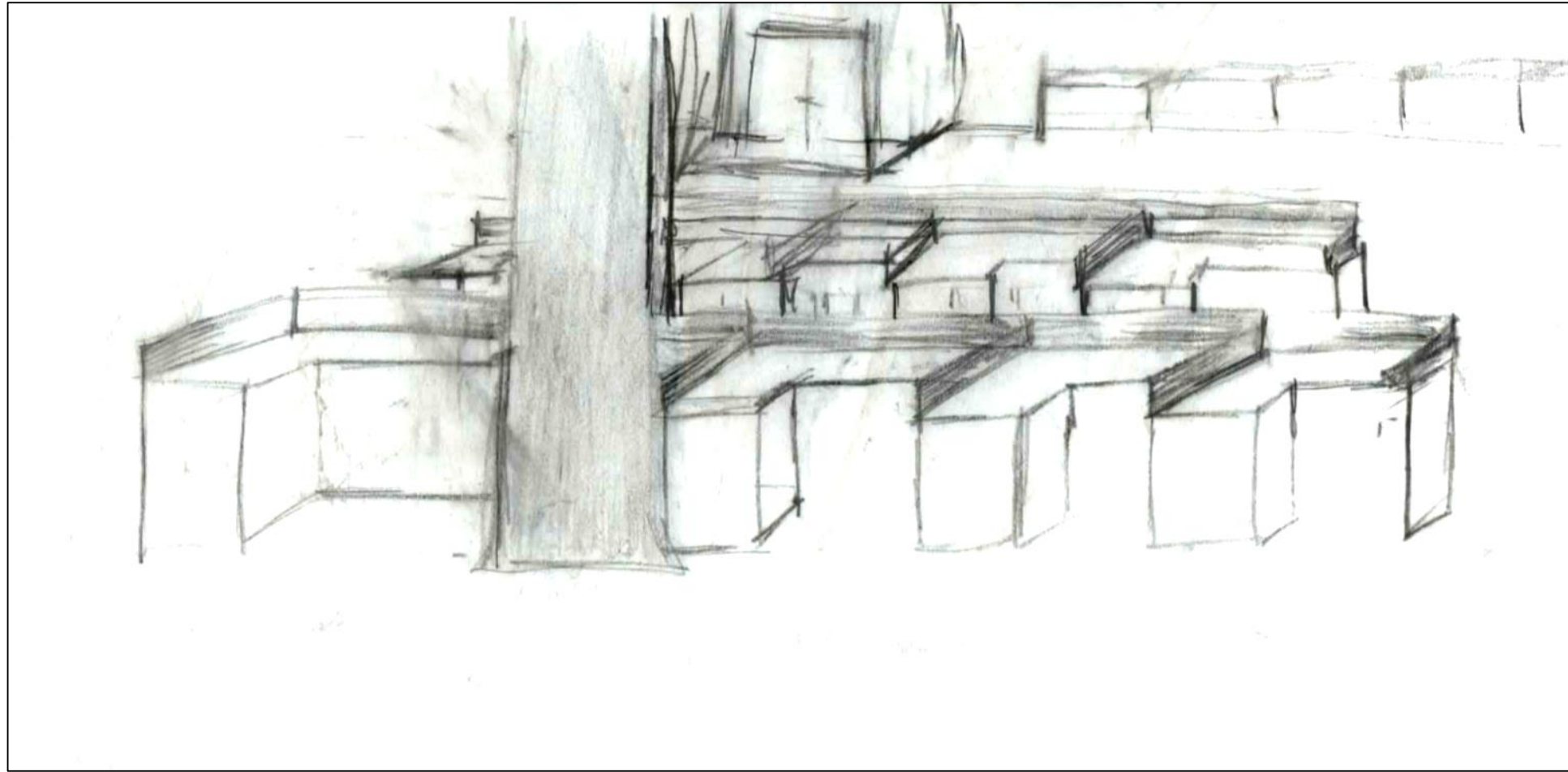
## Lounge Sketches





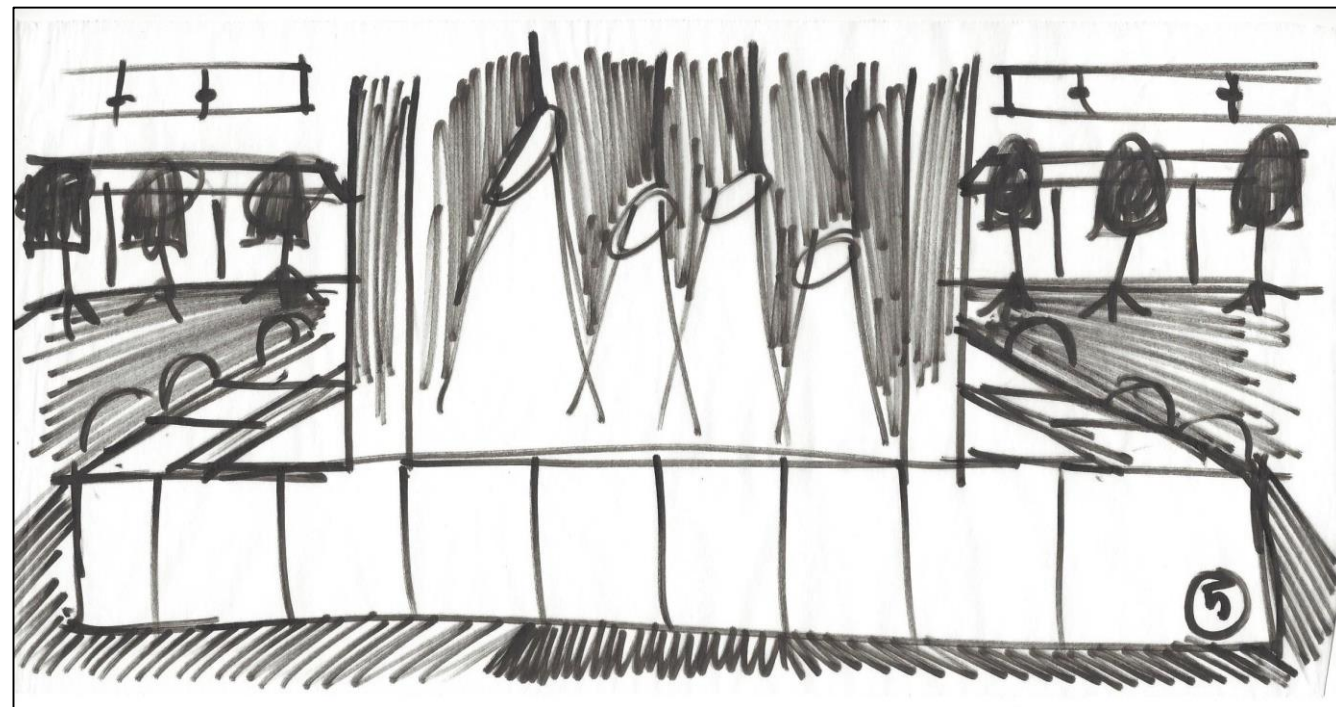
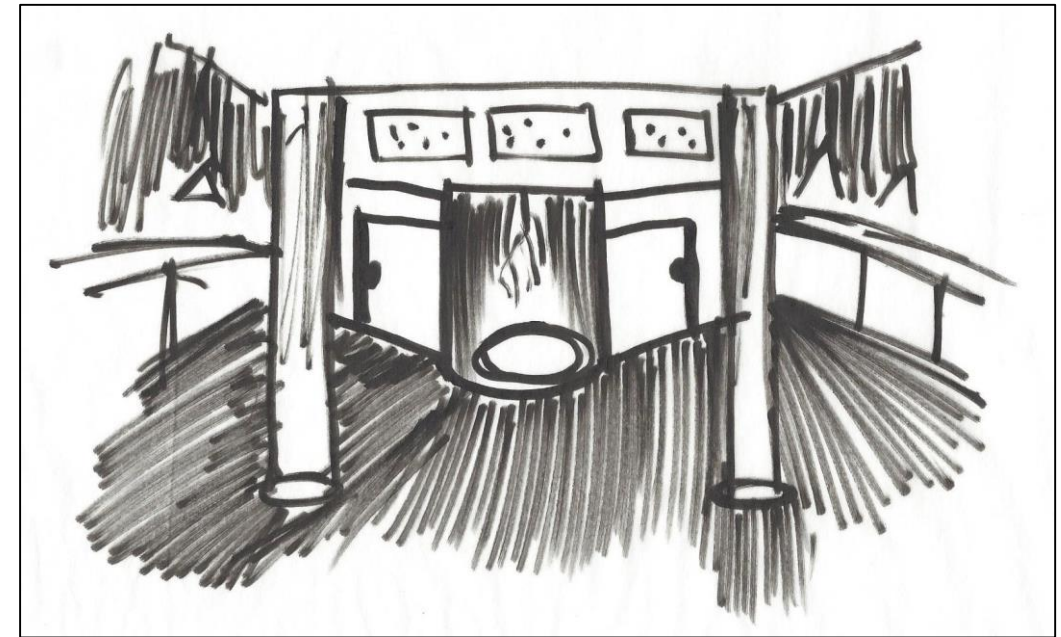
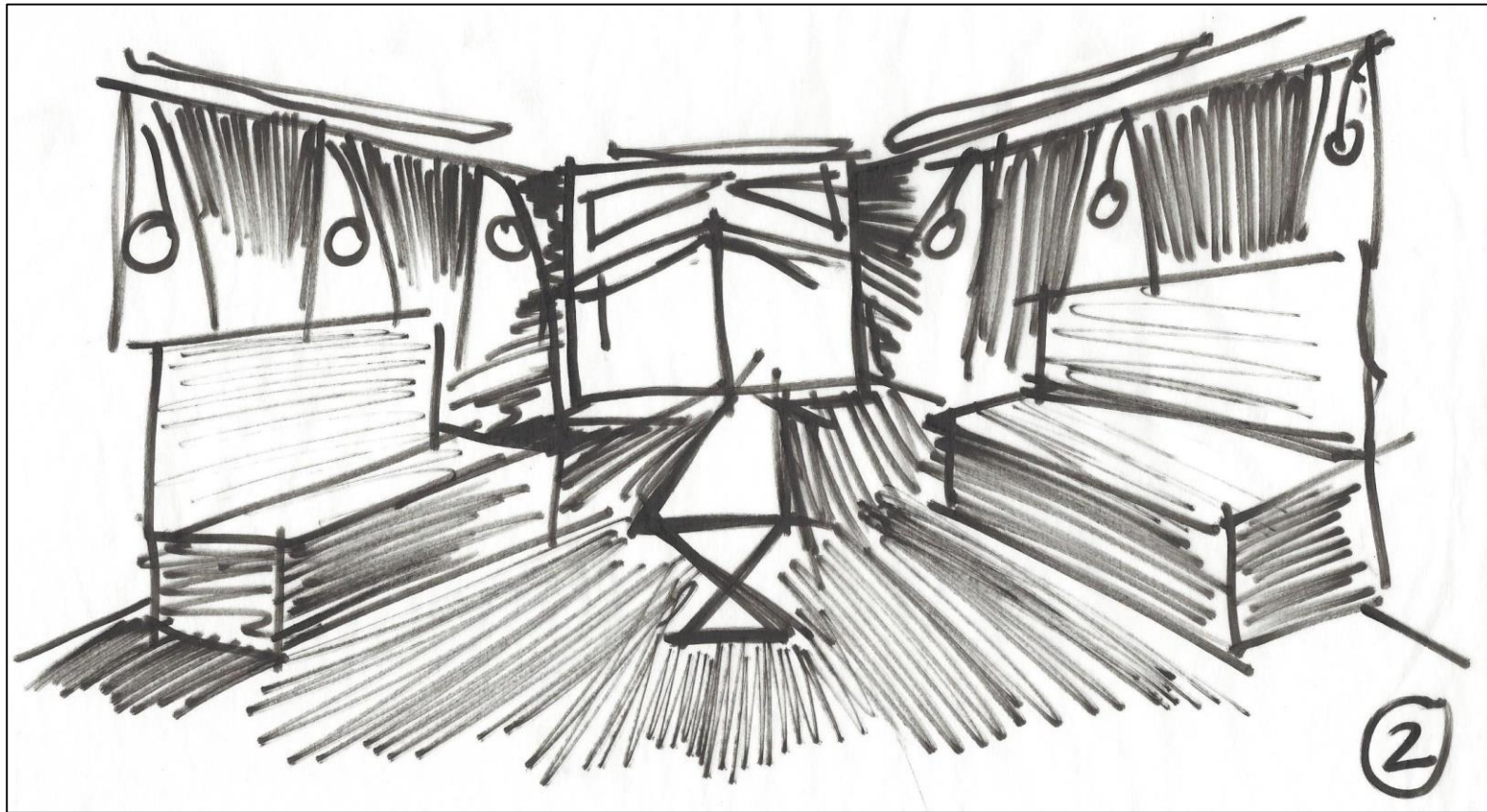
Workstation  
Sketches





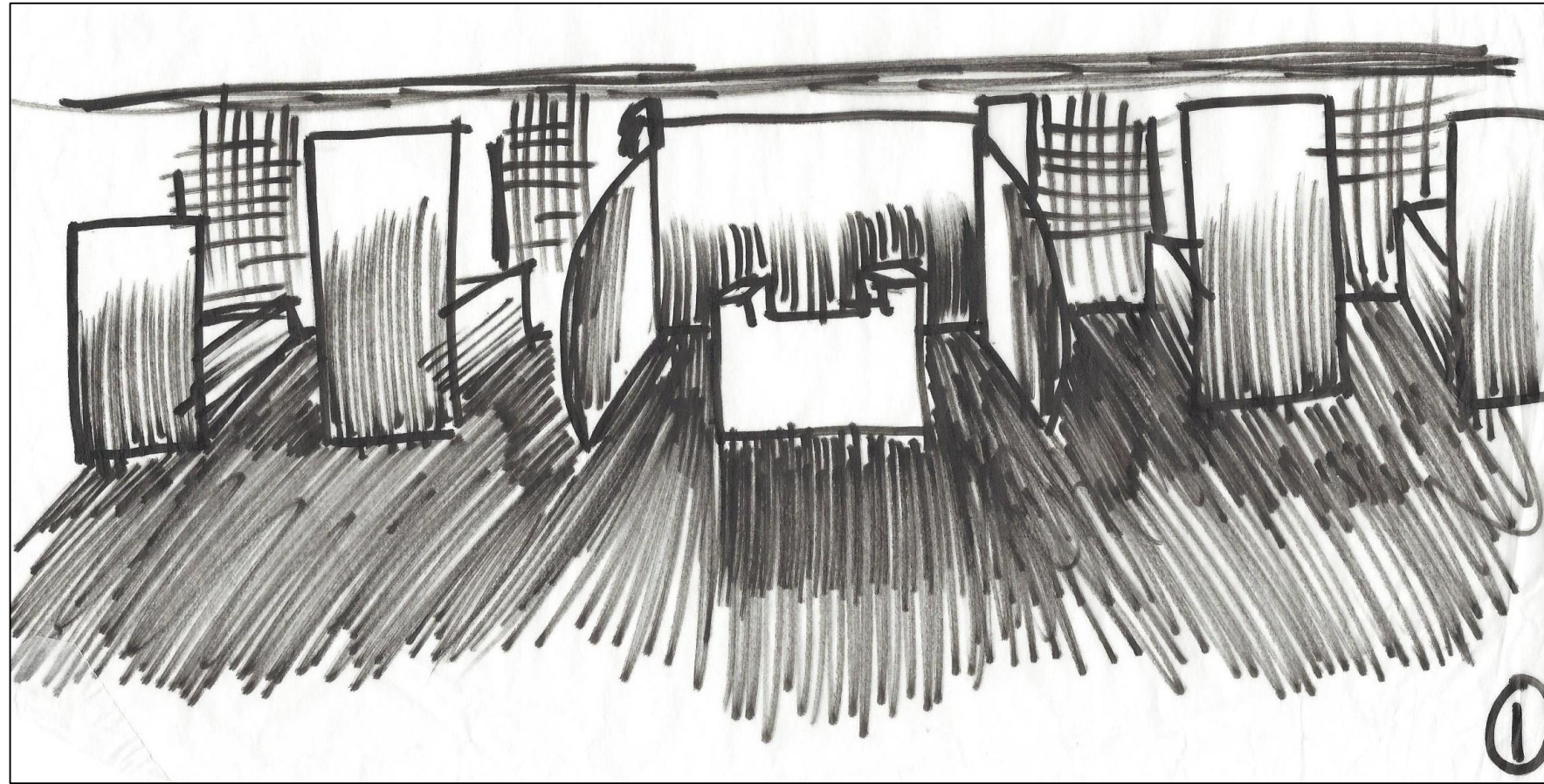
Workstation Sketches



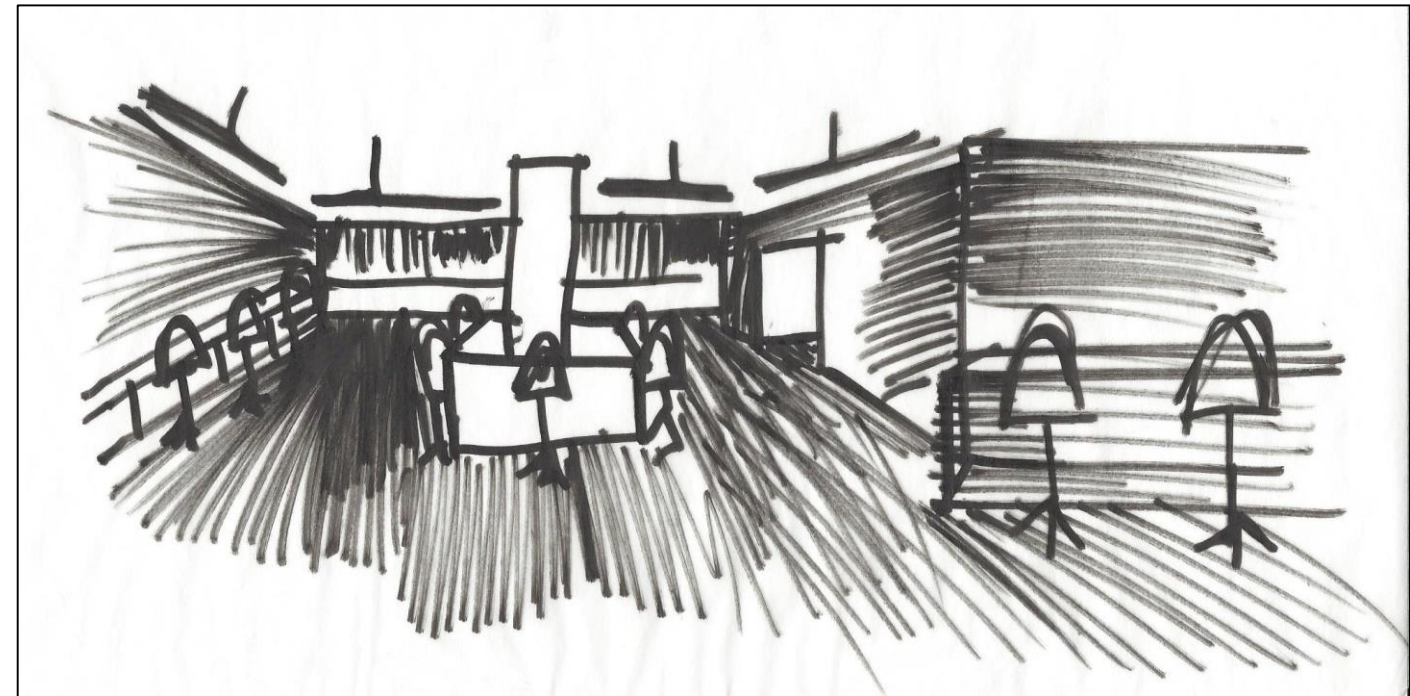


Lighting Sketches

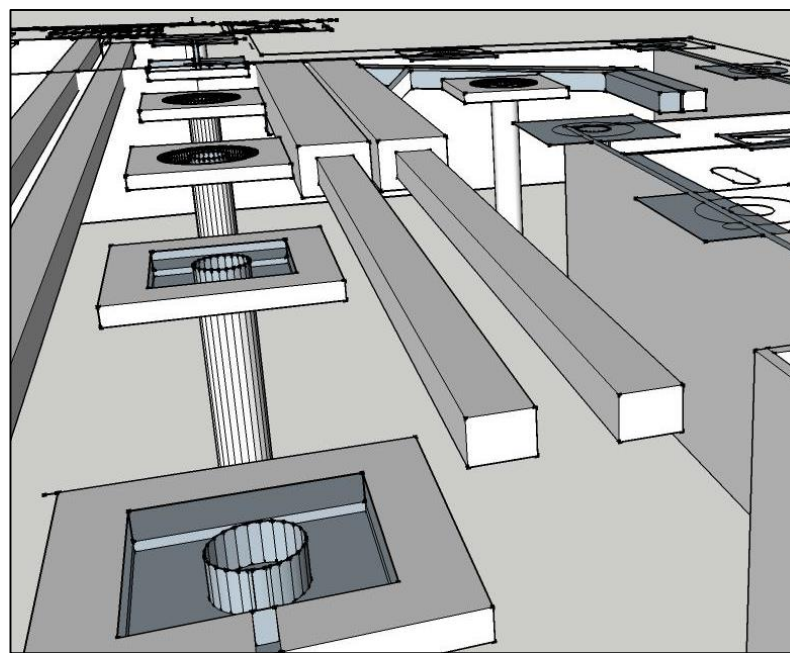
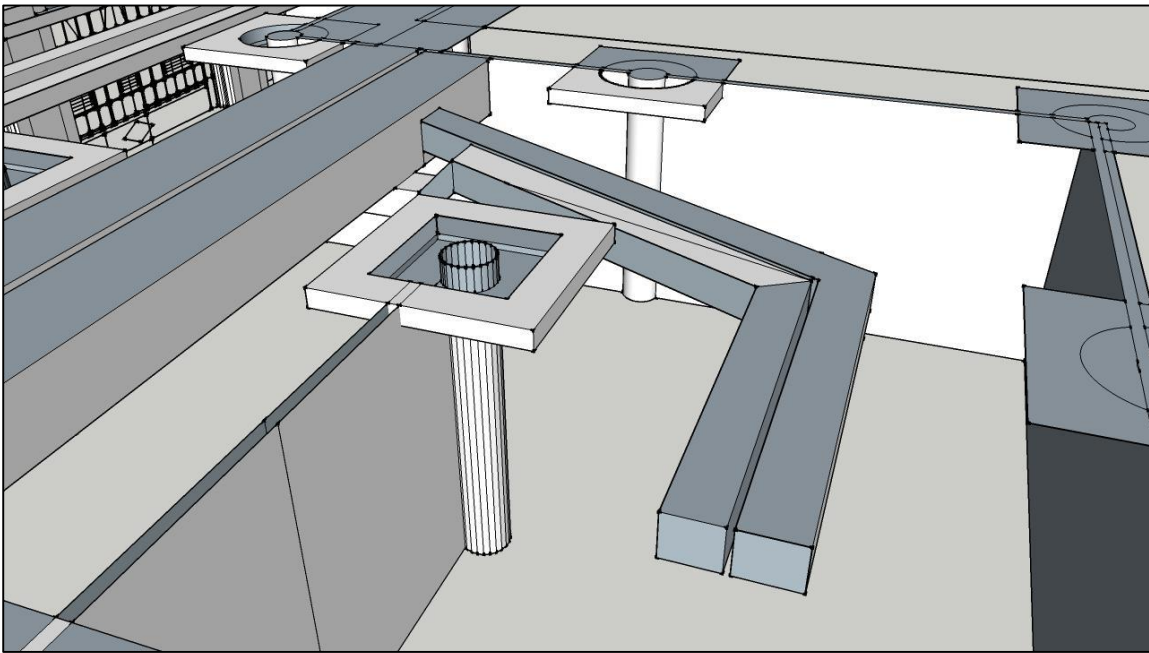
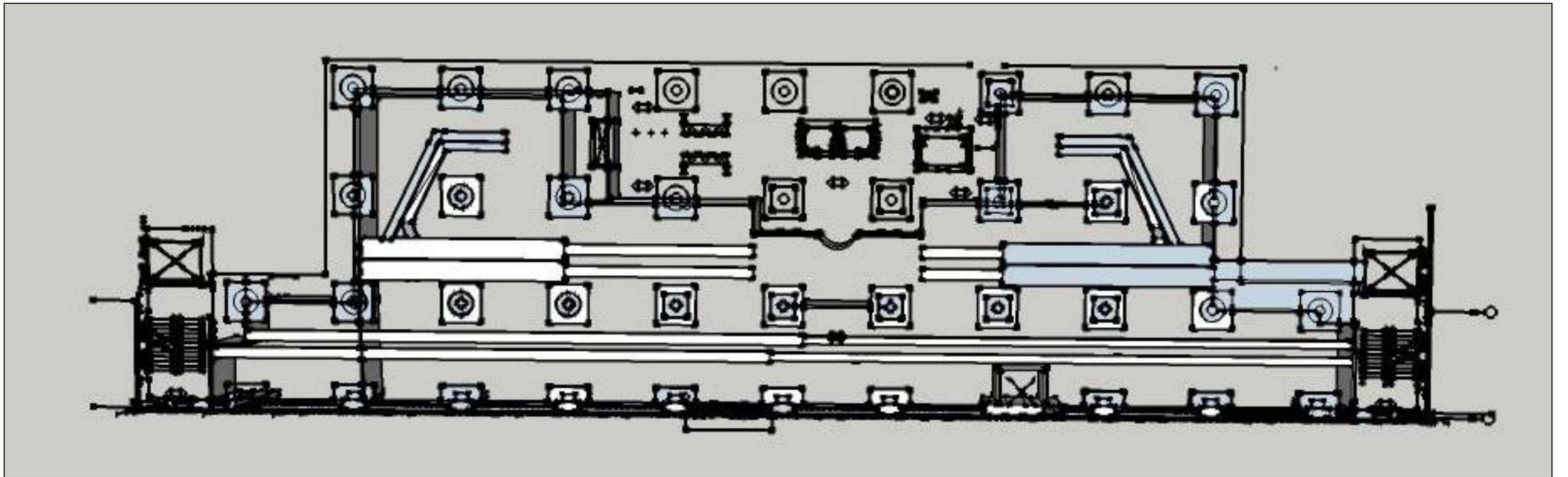




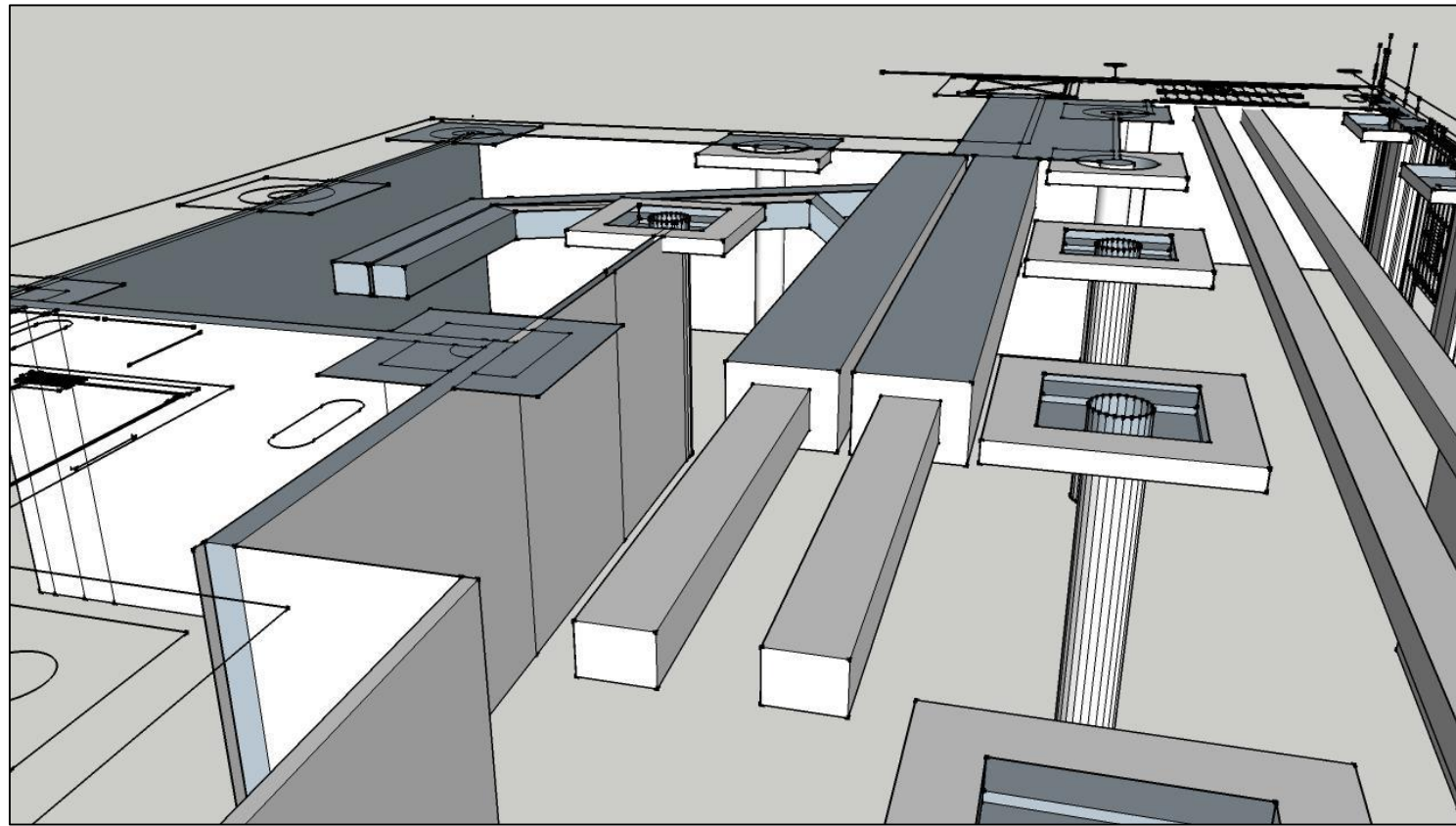
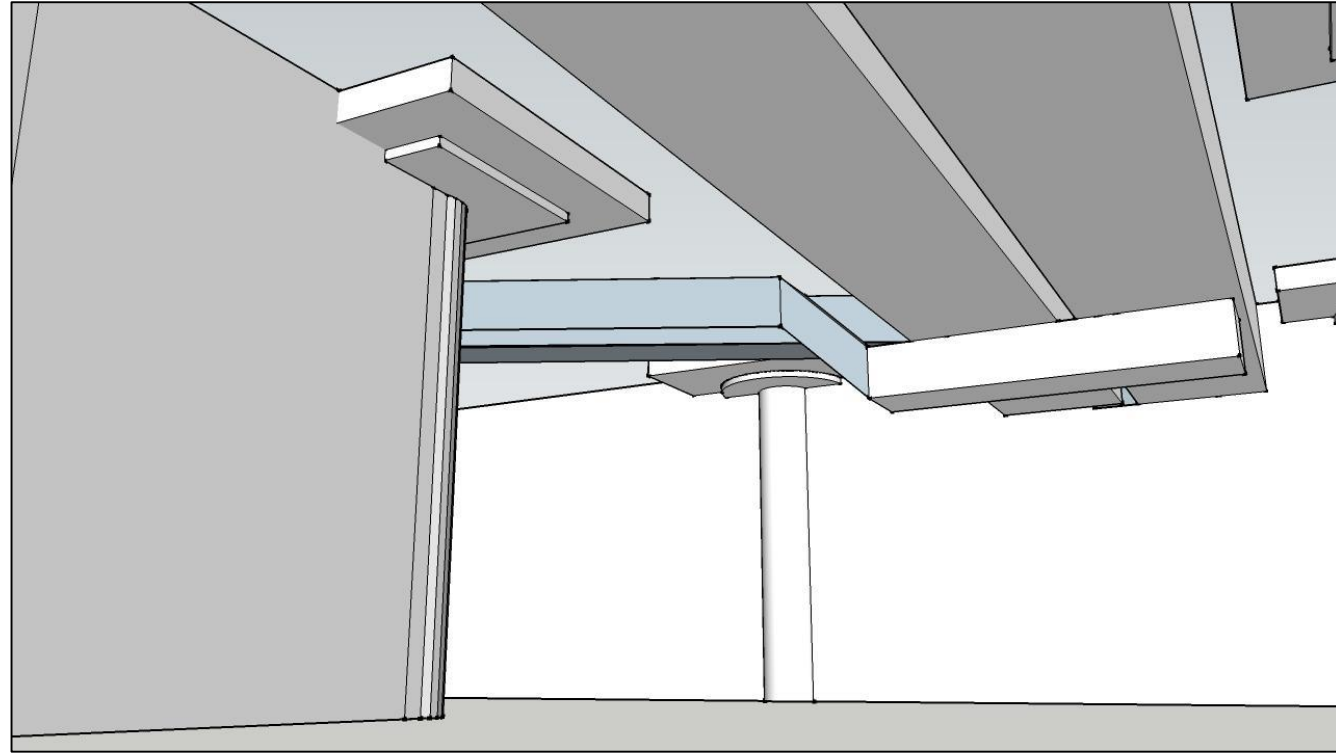
Lighting Sketches





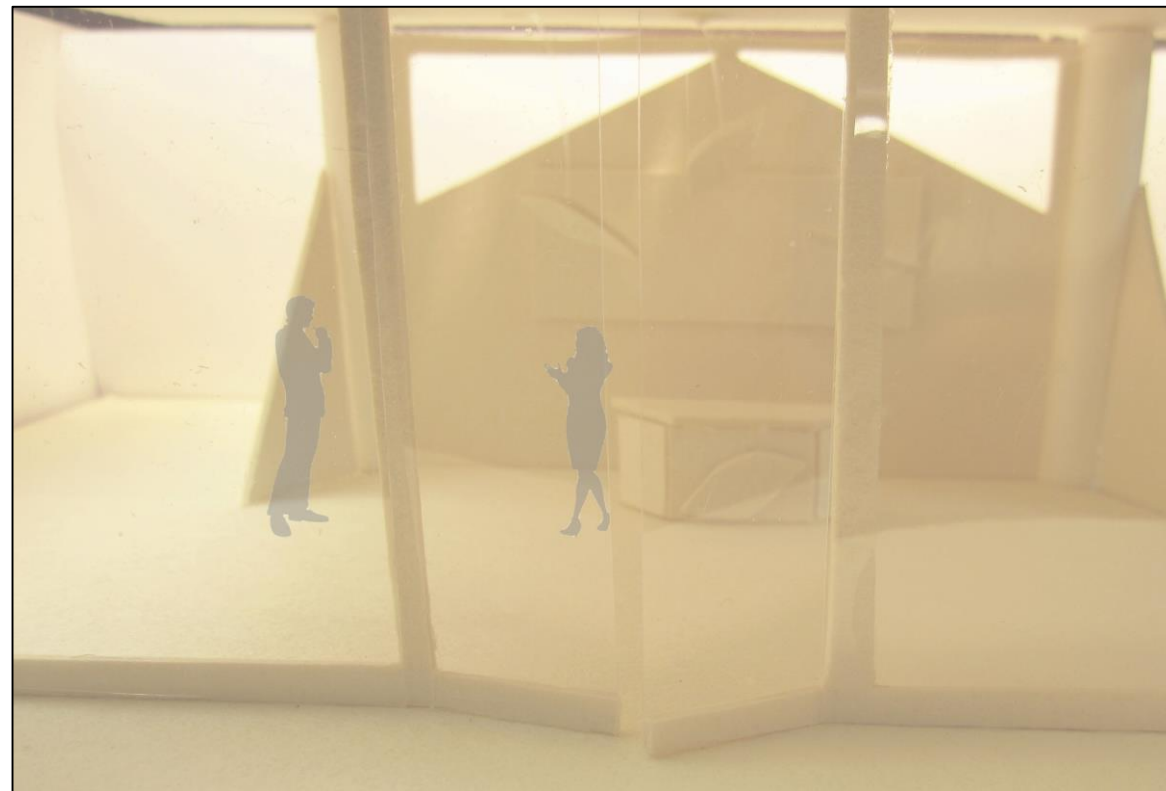


Systems RCP



Systems RCP



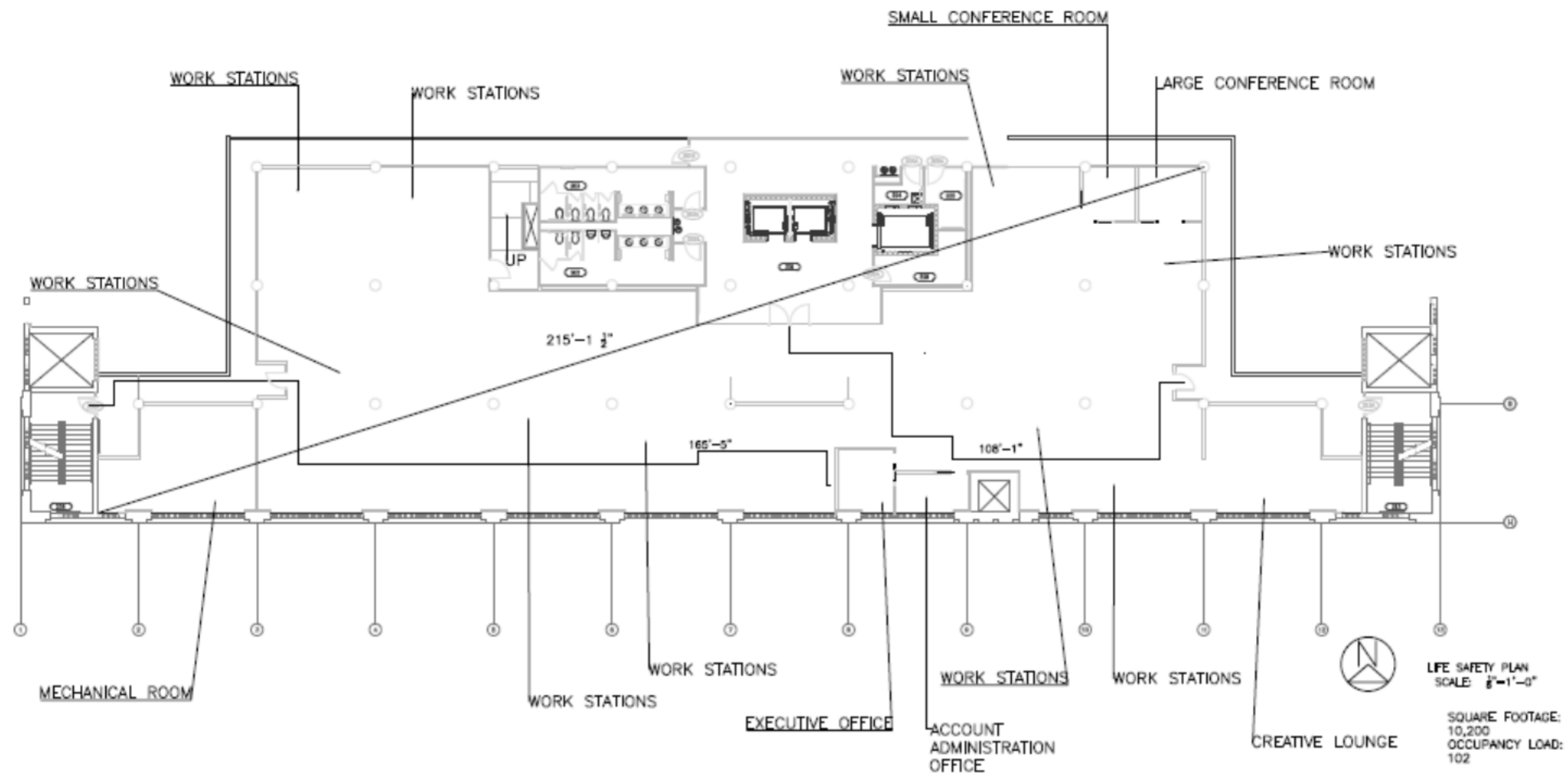


Lighting Model





Lighting Model



# Life Safety Plan

Building Construction and Occupancy									
Construction Type	Sprinklers?	Occupancy Type							
I	YES	B							
Exit Requirements: Number and Arrangement of Exits									
Space Designation	# of Exits		Travel Distance		Arrangement: Means of Egress				
	Required	Shown on Plans	Allowable Distance	Actual Distance Shown on Plans	Req'd Distance Between Exits		Actual Distance Shown on Plans		
SUITE 3100	2	3	300 SQ / FT	165.5 SQ / FT	107.25		108.1"		
Notes:									
Use Group or Space Designation	(A)	(B)	Calculated Occupant Load = A/B	©		Exit Width (Inches)			
	Area = Sq. Ft.	Area per Occupant		Egress per Occupant		Required Width = (A/B)xC		Actual Width	
				Stair	Level	Stair	Level	Stair	Level
SUITE 3100	10200	100	102	.3"	.2'	30.6	20.4	4'-8"	5'-0"
Notes:									

Life Safety Plan



Lumen (or Zonal Cavity) Method of Calculation:

$$\text{Maintained fc} = \frac{(\text{Number of lamps}) \times (\text{Initial lamp lumens}) \times \text{LLF} \times \text{CU}}{\text{Area}}$$

$$\text{Maintained fc} = \frac{(8) \times (5220) \times .72 \times 40}{110}$$

LLF: LLD x LDD

$$\text{LLF} = .9 \times .8$$

$$\text{RCR} = \frac{5(H)(L+W)}{L \times W} \quad \text{RCR} = \frac{5(5.5)(12 + 9.9)}{118.8}$$



Lighting Analysis

**ML4A 14 1285 MD (1) 28W T5**  
 1X4 SURFACE-MOUNTED, MICROGRID DIFFUSER

PRORATED FROM D21610U3

Total Luminaire Efficiency 62%

10% Uplight      90% Downlight

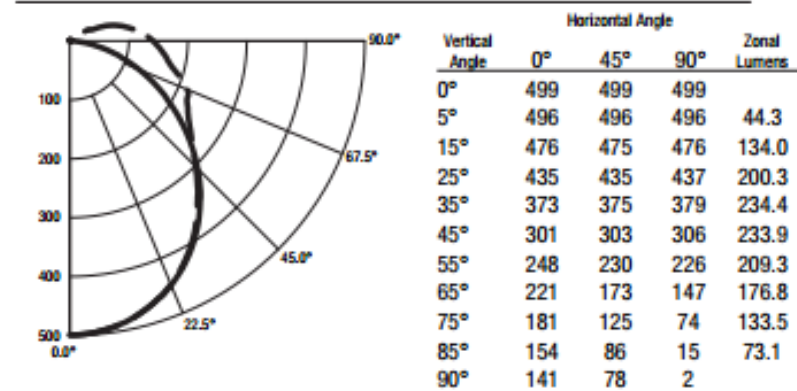
Spacing Criteria

Lateral Plane      0°      90°  
                                  1.2      1.2

TOTAL LAMP LUMENS = 2610

INPUT WATTS = 33

**Candela Distribution**



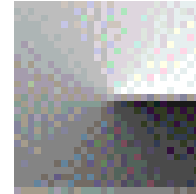
**Luminance Data in Candela / Sq. Meter**

Angle in Vertical°	Average 0°	Average 45°	Average 90°
45°	848	875	1038
55°	783	750	913
65°	825	673	766
75°	859	624	572
85°	1037	630	241

**Coefficients of Utilization**

Effective Floor Cavity Reflectance = 20%

pcc	Effective Floor Cavity Reflectance = 20%														
	0.8				0.7				0.5				0.3		
q/w	0.7	0.5	0.3	0.1	0.7	0.5	0.3	0.1	0.5	0.3	0.1	0.5	0.3	0.1	
0	73	73	73	73	70	70	70	70	66	66	66	62	62	62	
1	65	62	59	56	63	60	57	54	56	54	52	52	51	49	
2	59	53	49	45	57	52	47	44	48	45	42	46	43	40	
3	54	47	41	37	52	45	40	36	43	38	35	40	37	34	
4	49	41	36	31	47	40	35	31	38	33	30	36	32	29	
5	45	37	31	27	43	36	31	27	34	29	26	32	28	25	
6	42	33	28	24	40	32	27	23	31	26	23	29	25	22	
7	39	30	25	21	37	29	24	21	28	23	20	26	22	19	
8	36	28	22	19	35	27	22	18	26	21	18	24	20	17	
9	34	25	20	17	32	25	20	16	23	19	16	22	18	16	



**ZUMTOBEL**

Photometric Data

