

Rachel Skala

Systems- IDSN 3600

Portfolio 1

Research, Program, and Concept

PROGRAM:

Summary										
Personnel Totals Per Department	Personnel Totals		Personnel				Support	Total	Circulation	Carpetable
	Current	Future	Sq. Feet	Computer	Printer	Fax	Sq. Feet	Sq. Feet		Sq. Feet
Executive	2	2	200	2	1	-	480	680	1.54	1,047
Administration	3	3	248	4	1	-	90	338	1.54	521
Creative Services	2	3	220	7	1	-	300	520	1.54	801
Support	70	76	2,736	-	-	-	2,275	5,011	1.54	7,717
Totals:	77	84	3,404	13	3	-	3,145			10,085

Position	Personnel Totals		Unit Square Ft.		Extended Sq. Feet	Equipment			Notes
	Current	Future	Office	Workstation		PC	Printer	Fax	
					0				
					0				
					0				
					0				
					0				
Director	1	1	100		100	1			Locate near Reception
					0				
					0				
					0				
Administrative Assistant	1	1	100	0	100	1	1		Locate directly outside Mgr office
					0				
					0				
					0				
					0				
					0				
Personnel Totals:	2	2			200	2	1	0	

SUPPORT/EQUIPMENT SPACES

Space	Support/Equipment		Unit Square Feet		Extended Sq. Feet	Location	Notes
	Current	Future					
					0		
Waiting Area	1	1		200	200	Visible from Admin Asst	Seating for 4 guests
					0		
Pantry	0	1		0	0	Near Admin Assts	
					0		
Fax/Copy	0	1		0	0	Near Admin Assts	
					0		
Storage	1	1		100	100		Shelving
					0		
File Drawers	50	60		3	180		3-Hi cabinets
					0		
Executive Conference Room	1	1		0	0	Adjacent to Waiting Area	Full AV

Position	Personnel Totals		Unit Square Ft.		Extended Sq. Feet	Equipment			Notes
	Current	Future	Office	Workstation		PC	Printer	Fax	
					0				
Finance					0				
					0				
Manager	2	2	100		200	1			
Clerical	1	1		48	48	3	1		
					0				
					0				
					0				
					0				
					0				
					0				
					0				
					0				
					0				
Personnel Totals:	3	3			248	4	1	0	

Department Summary		
Information:		
Personnel	248	Square Ft.
Equipment	90	Square Ft.
Sub Total:	338	Square Ft.
Circulation	1.54	
Total Carpetable:	520.52	Square Ft.

Interviewee:
Interview Date:
Revision Submitted:
Sign Off:

SUPPORT/EQUIPMENT SPACES

Space	Support/Equipment		Unit Square Feet	Extended Sq. Feet	Location	Notes
	Current	Future				
				0		
Finance				0		
File Drawers	50	50	1.8	90	Lockable room	5-Hi cabinets
Equipment	1	1		0	Next to work area	3 Printers, shredder, work counter
				0		
				0		
				0		
				0		
				0		
				0		
				0		
				0		
				0		
Support Totals:				90		

Department Notes:

PERSONNEL

Position	Personnel Totals		Unit Square Ft.		Extended Sq. Feet	Equipment			Notes
	Current	Future	Office	Workstation		PC	Printer	Fax	
					0				
Team Manager	1	1	100		100	2	1		
					0				
Team Assistant	1	2		48	120	1			
					0				
					0	2			
					0				
					0	2			
					0				
					0				
					0				
					0				
					0				
					0				
Personnel Totals:	2	3			220	7	1	0	

SUPPORT/EQUIPMENT SPACES

Space	Support/Equipment		Unit Square Feet	Extended Sq. Feet	Location	Notes
	Current	Future				
				0		
				0		
				0		
Concept Lounge	0	1	300	300		
				0		
Work Area	0	1	0	0	Adjacent to Teams	Work counters
				0		
Storage	0	1	0	0	Next to Work Area	Shelving
				0		
				0		
				0		

Position	Support/Equipment		Unit Square Ft.	Extended Sq. Feet	Location	Notes	Department Summary	
	Current	Future					Information:	
Workstations	70	76	36	2736			Personnel	2736 Square Ft.
				0			Equipment	2275 Square Ft.
				0			Sub Total:	5011 Square Ft.
				0			Circulation	1.54
				0			Total Carpetable:	7716.9 Square Ft.
				0				
				0				
				0				
				0				
				0				
				0				
				0				
				0				
				0				
				0				
				0				
				0				
				0				
				0				
Personnel Totals:	70	76		2736				

3

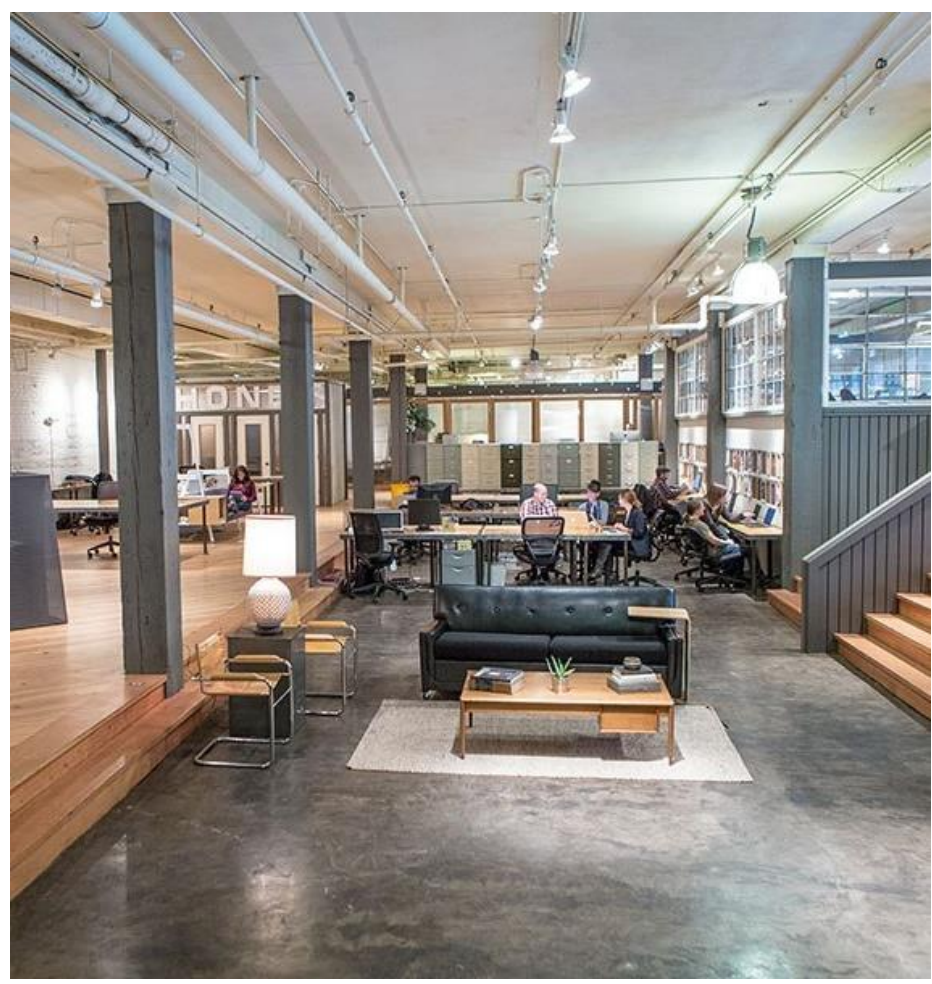
Interviewee:
 Interview Date:
 Revision Submitted:
 Sign Off:

SUPPORT/EQUIPMENT SPACES

Space	Support/Equipment		Unit Square Feet	Extended Sq. Feet	Location	Notes	Department Notes:	
	Current	Future						
				0				
Reception	1	1	300	300	Direct access to Broadcast, Executive, Mktg	Waiting for 6, TV's		
				0				
Conference Room	1	1	300	300	Shared by all areas	Full AV		
Small Conference	3	3	100	300				
Computer Service Area	0	1	80	80		Work counter, outlets		
Computer Server Room	1	1	80	80	Near Account Admin	Raised floor, secure, 3 racks		
Copy/Fax Station	1	2	120	240	Spread throughout	Work counter		
Pantry	1	2	100	200	Spread throughout	Coffee, sink, refrigerator, cabinets		
Lunch Room	0	1	400	400		Full kitchen, seating		
				0				
Coats	40	75	1	75	Spread throughout			
Mechanical Room	0	1	300	300	Near Base Building air supply	Supplemental Air		
				0				
Support Totals:				2275				

CONCEPT STATEMENT:

A successful and intriguing coworking environment can be developed from the concept of a stadium. A stadium is organized into multiple sections, all circulating a center point. All sections of the stadium have a view of the main attraction although some views are better than others. A traditional stadium possess an open concept while utilizing the height and full length of the space. A stadium will be filled with a diverse group of people that all share a common interest or purpose in being there. No two stadiums are identical and differ depending on their location and purpose.



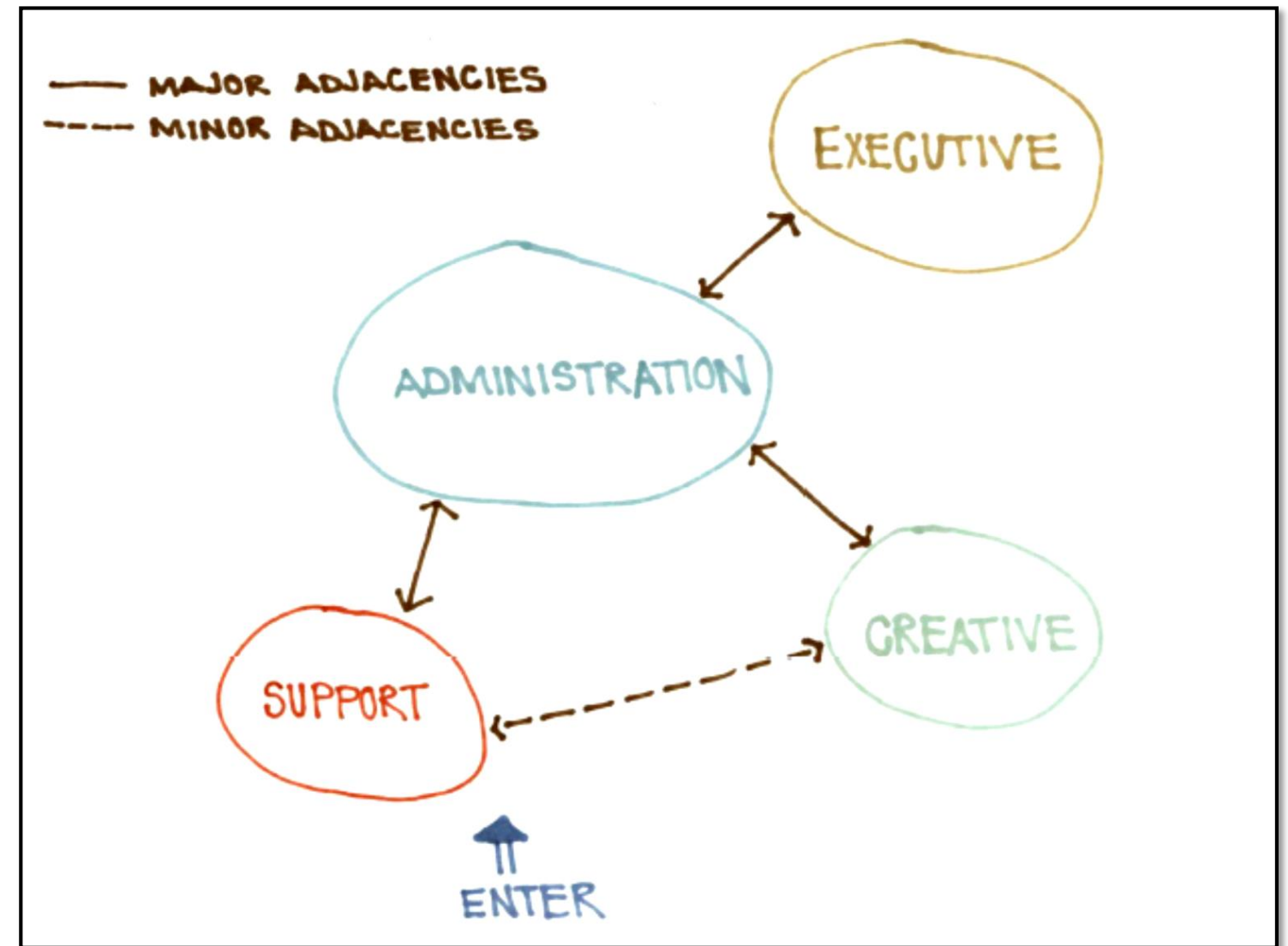
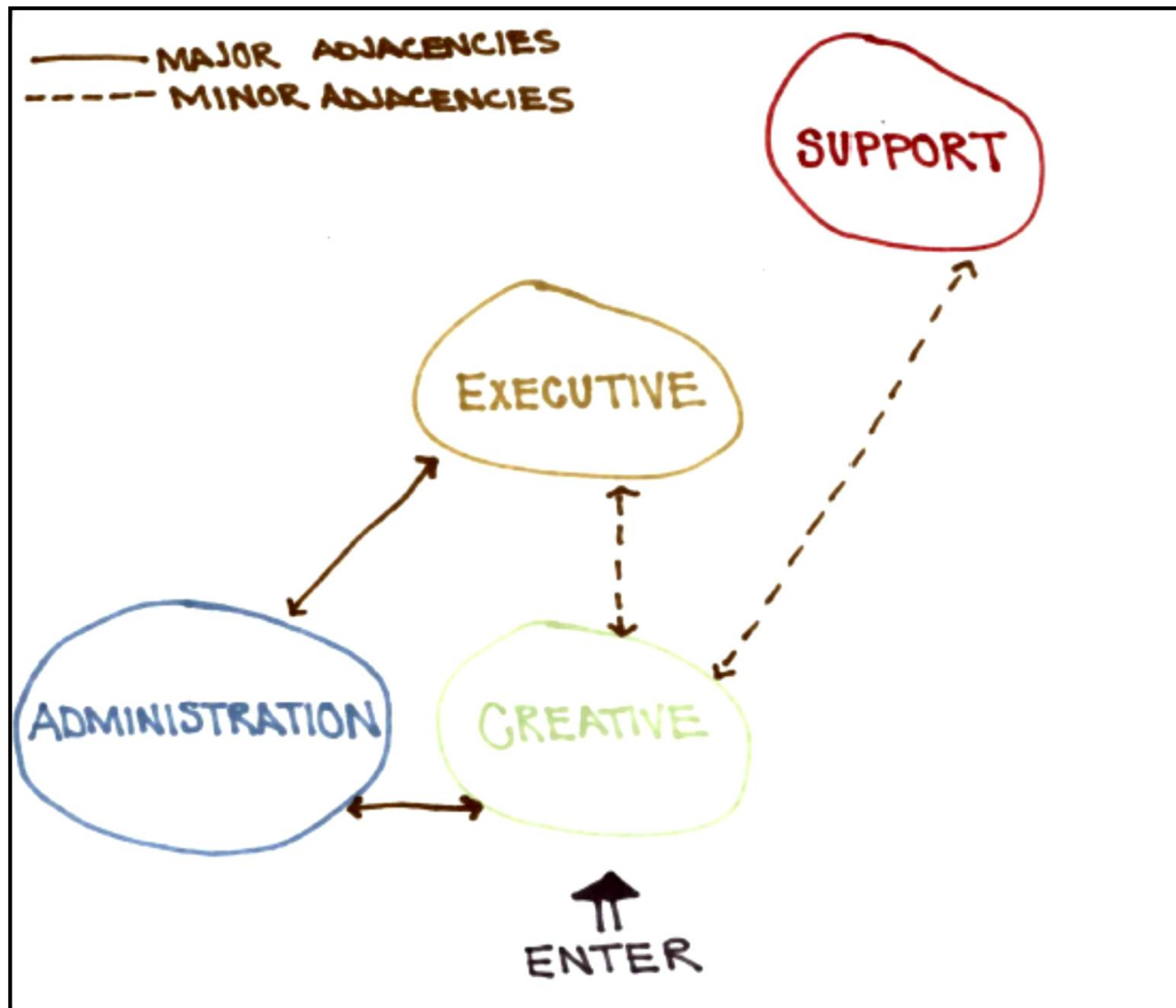
Rachel Skala

Systems- IDSN 3600

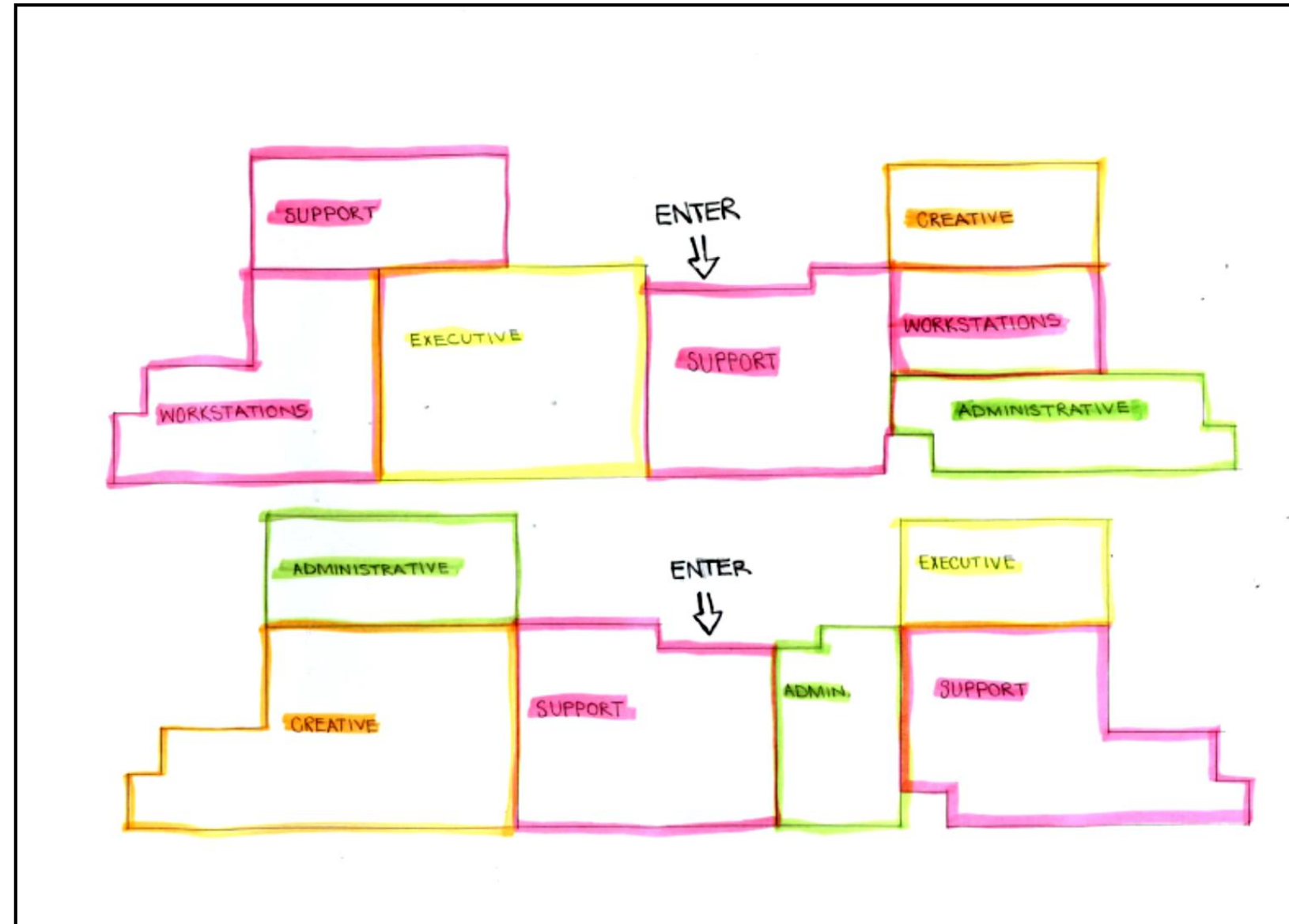
Portfolio 2

Preliminary Schematic Design

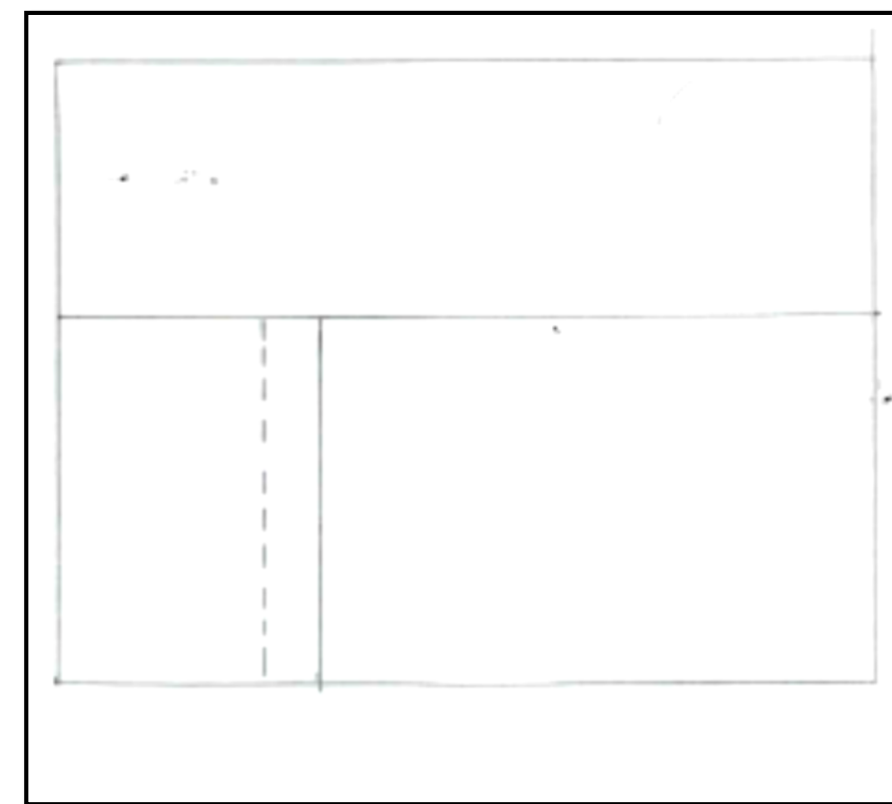
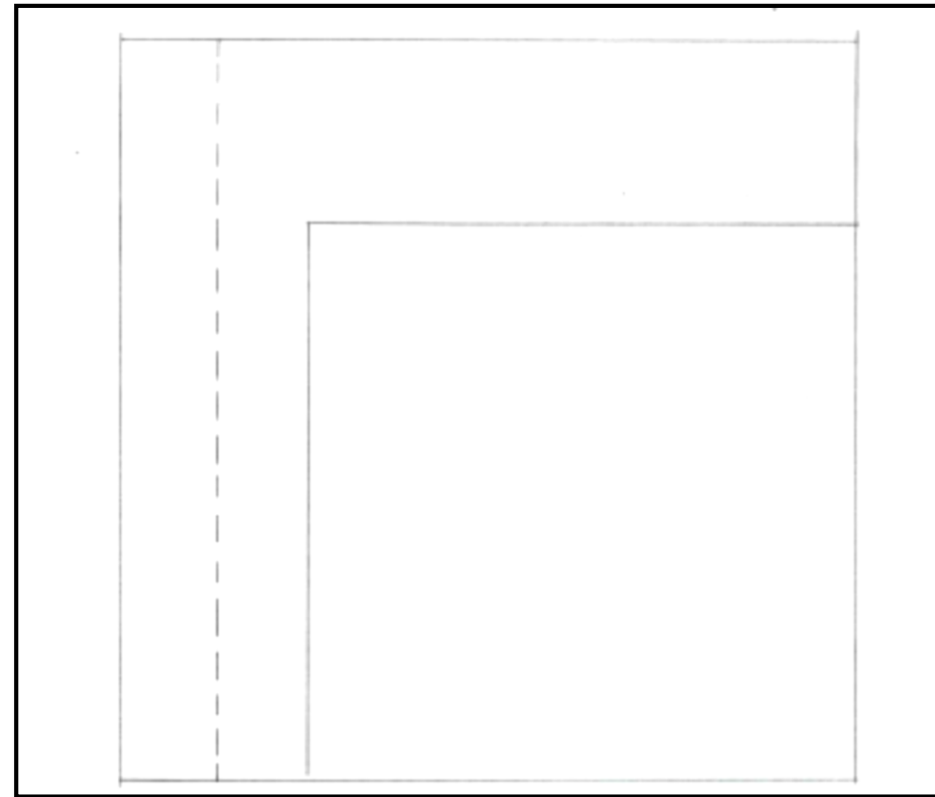
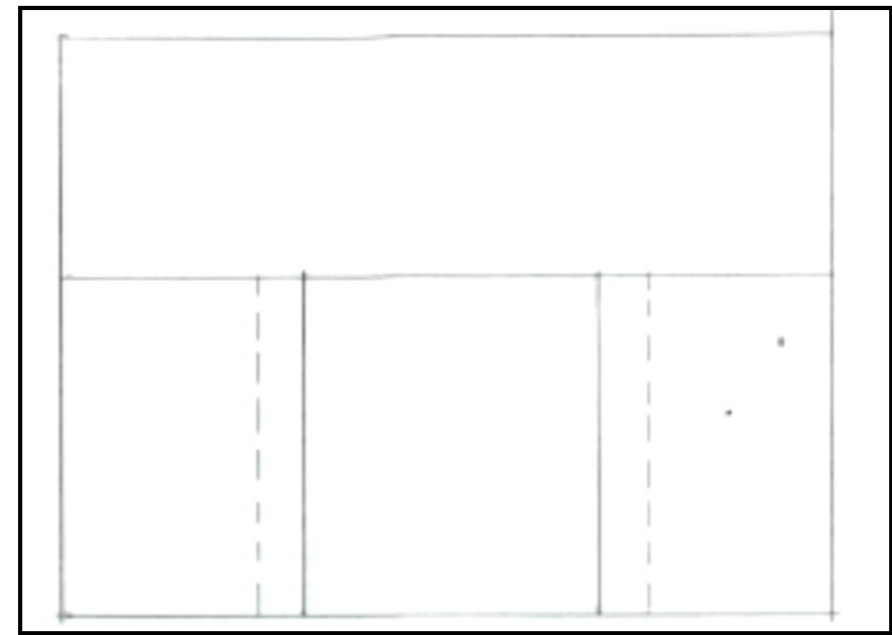
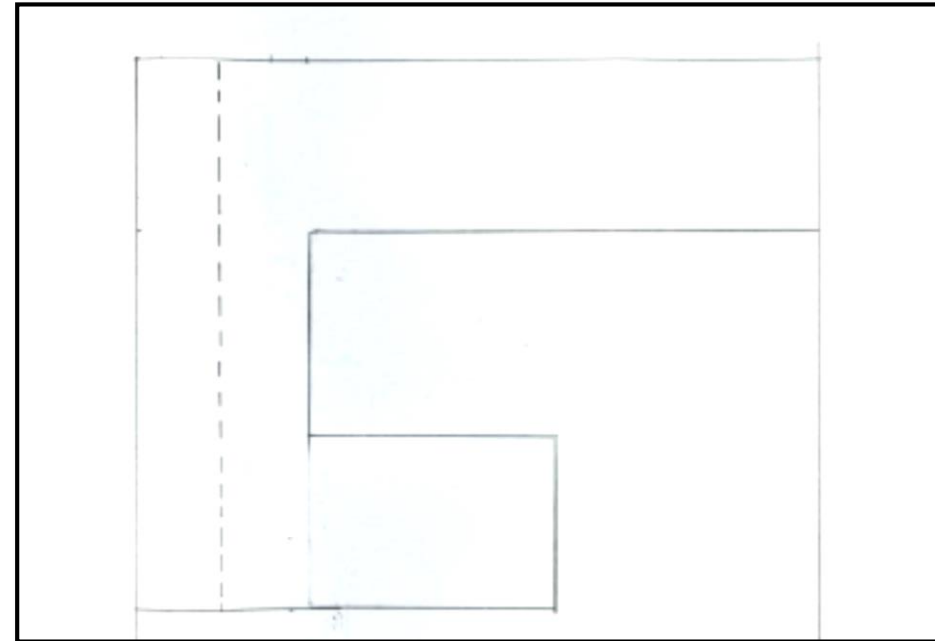
Assignment 4:
Bubble Diagrams



Assignment 4:
Blocking Diagrams



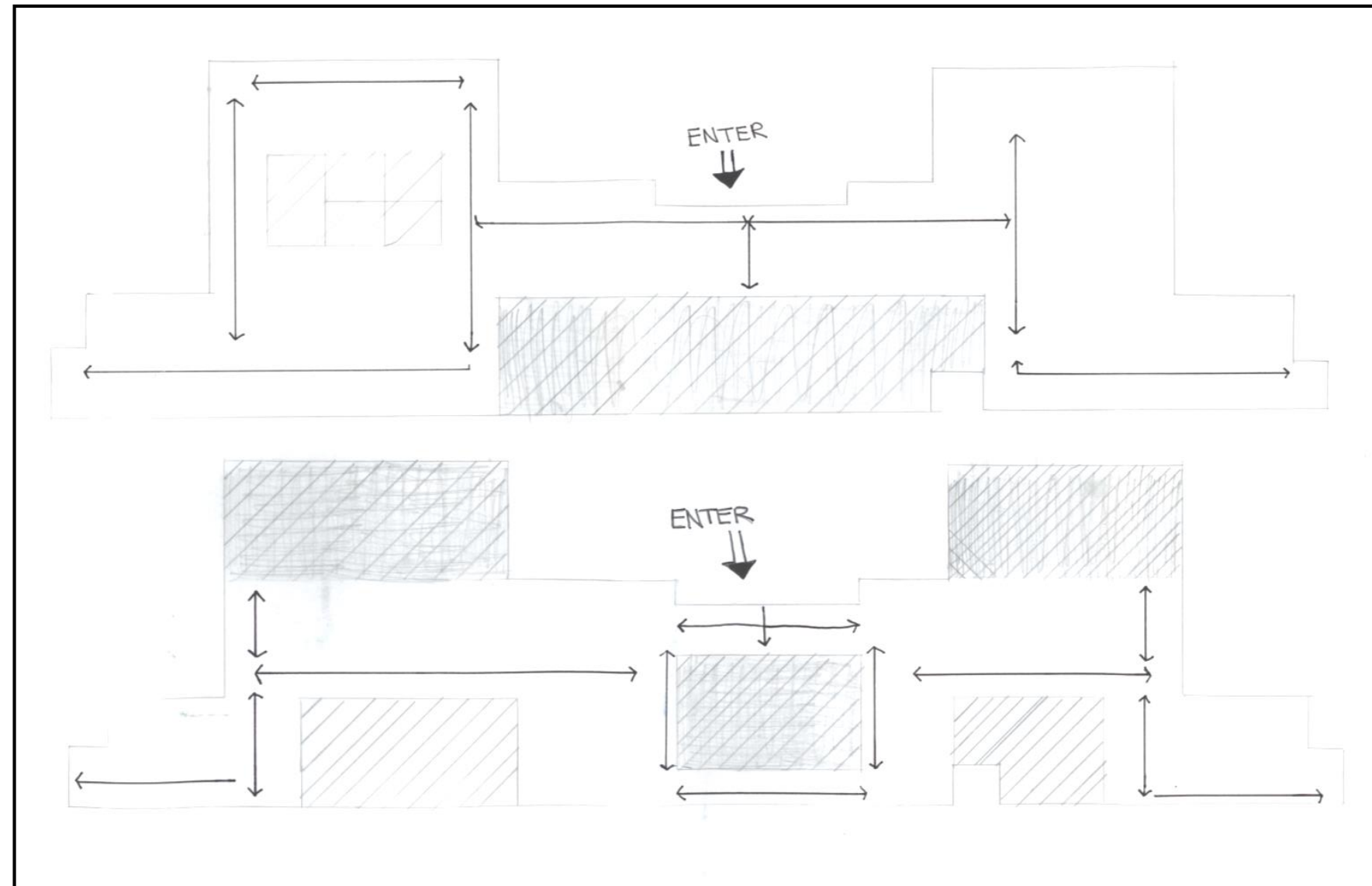
Assignment 4:
Space Standard Drawings



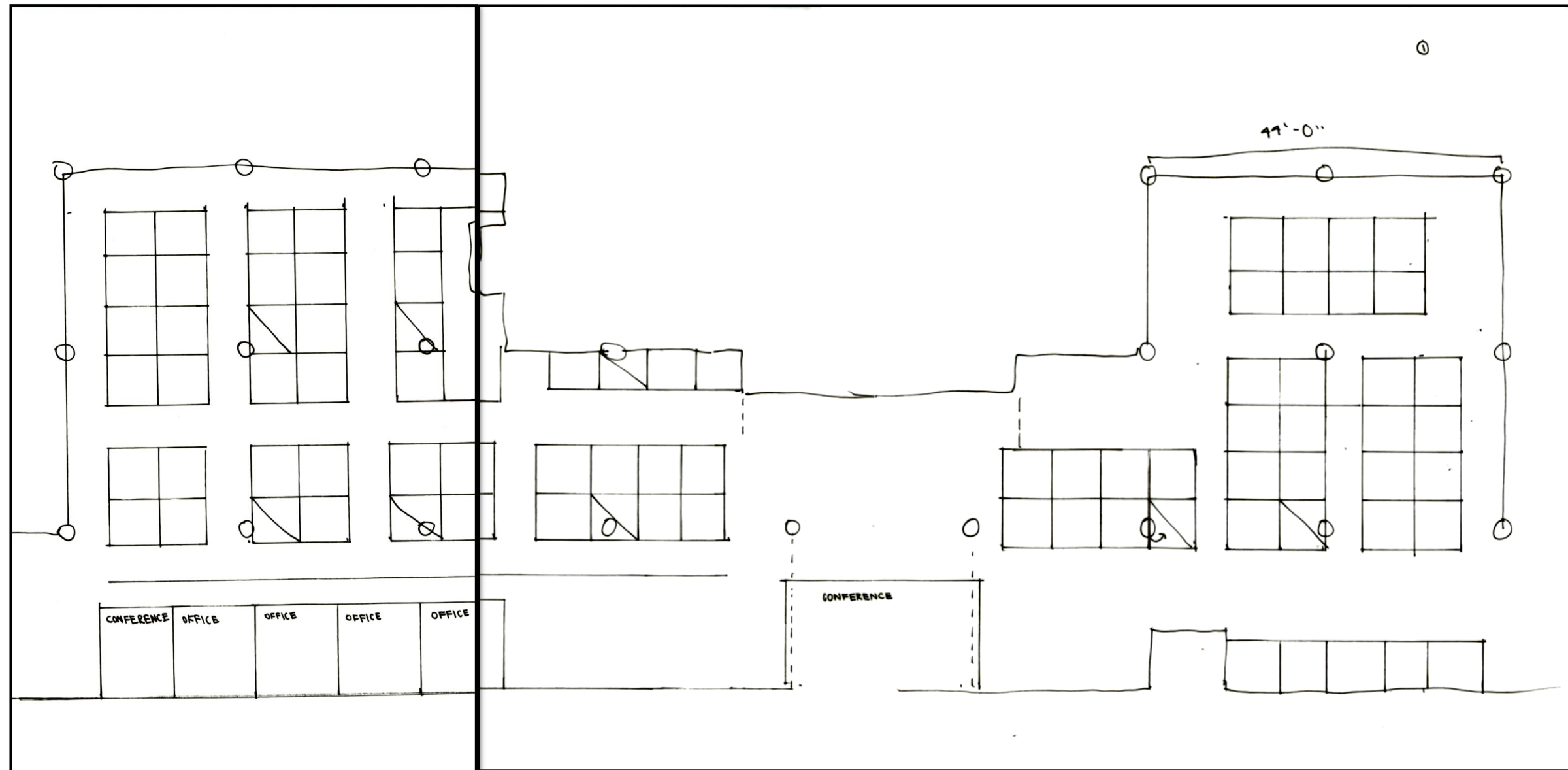
OFFICE

WORKSTATION

ASSIGNMENT 5:
Spatial Concept Sketches

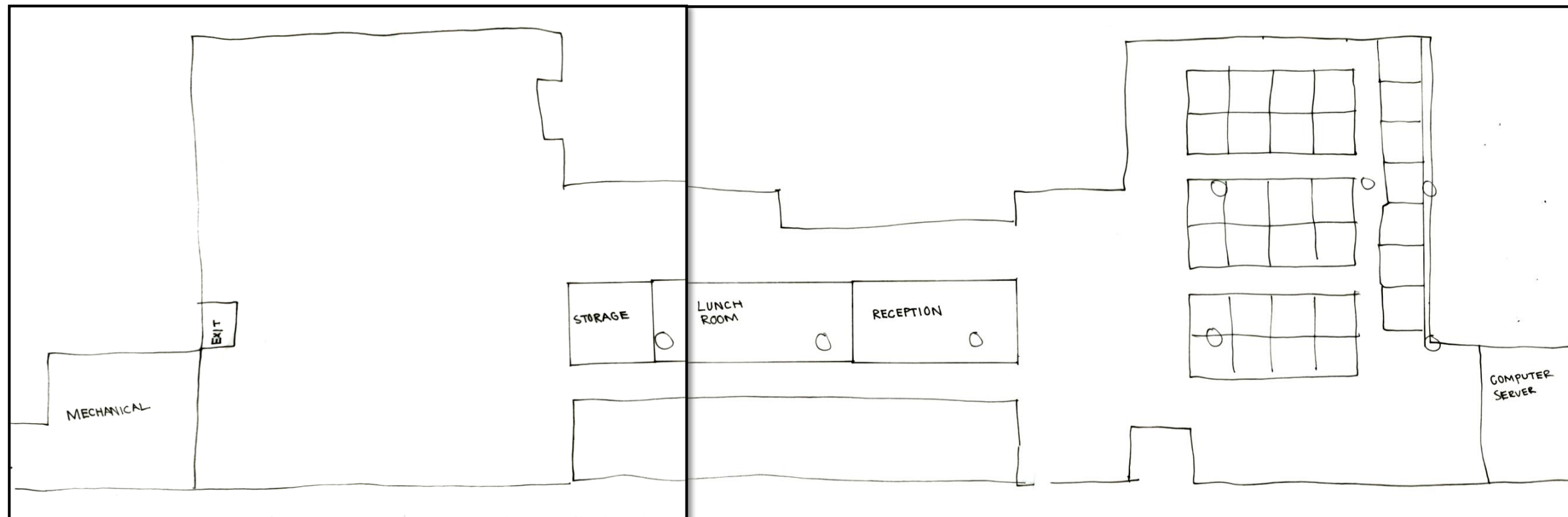
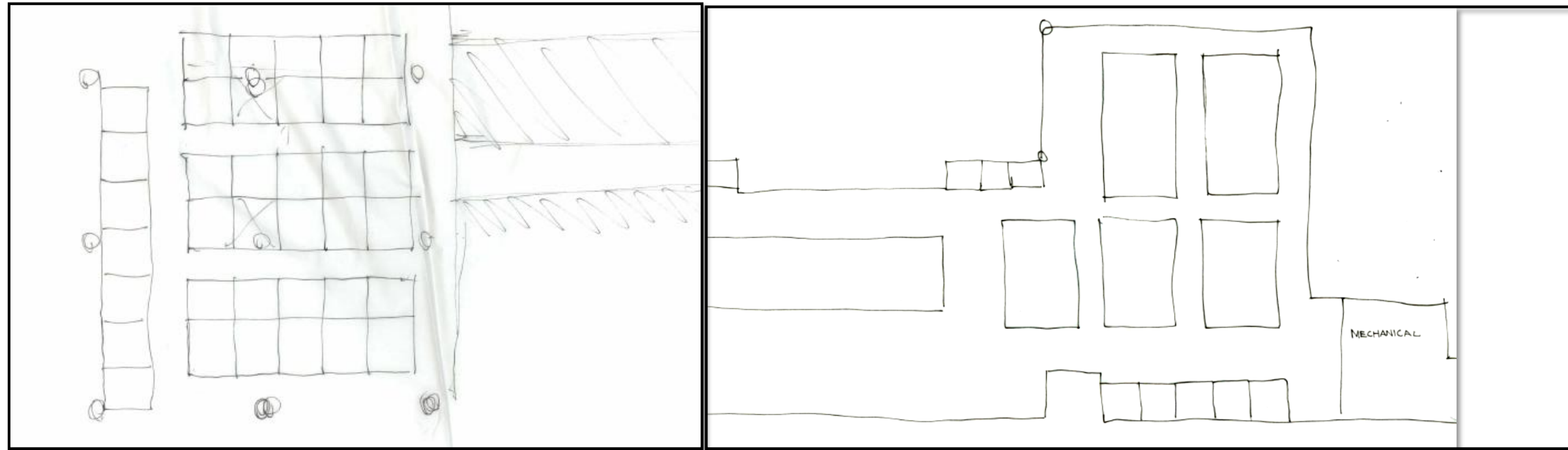


Assignment 6:
Space Plan Sketches



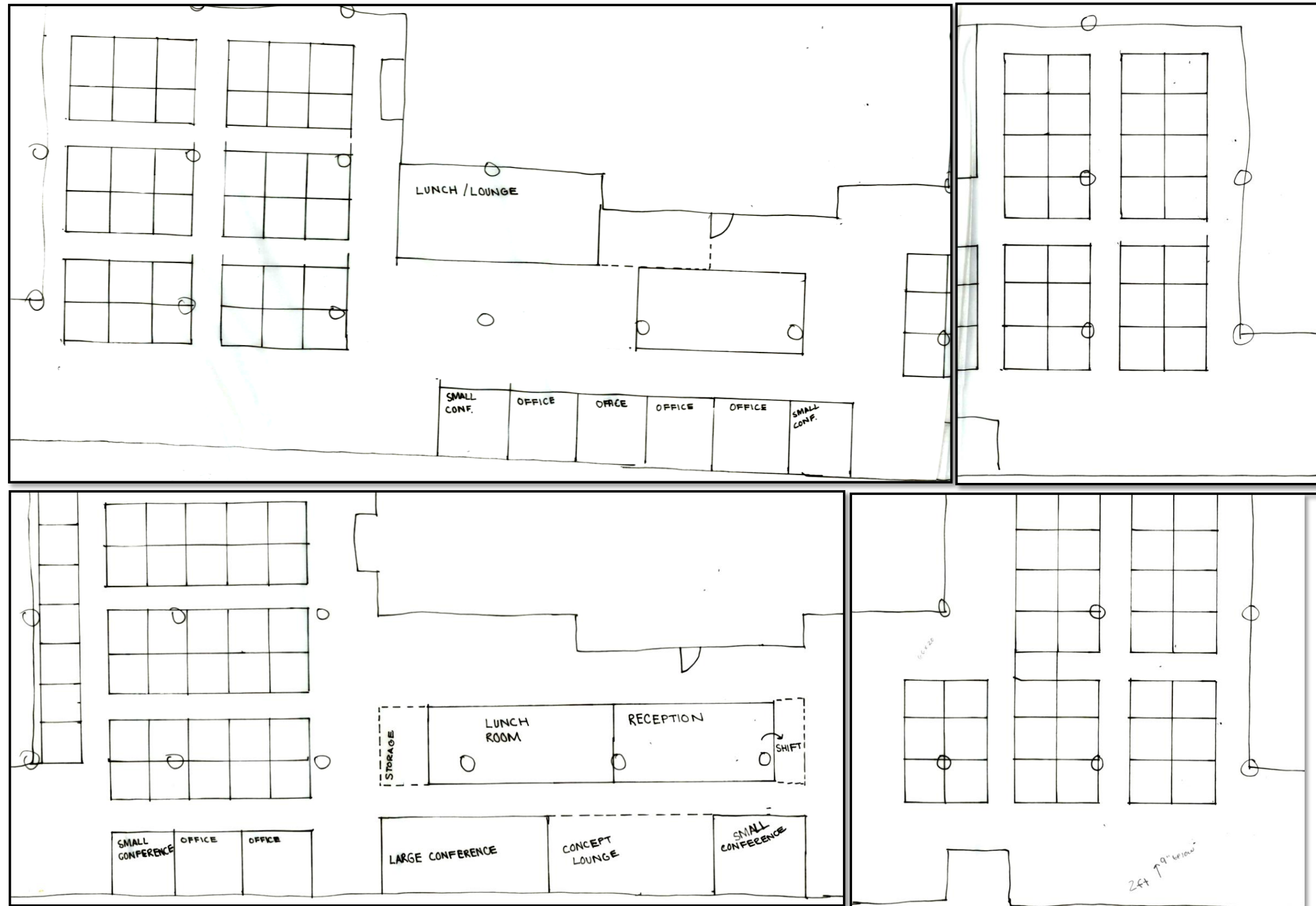
Assignment 6:

Space Plan Sketches



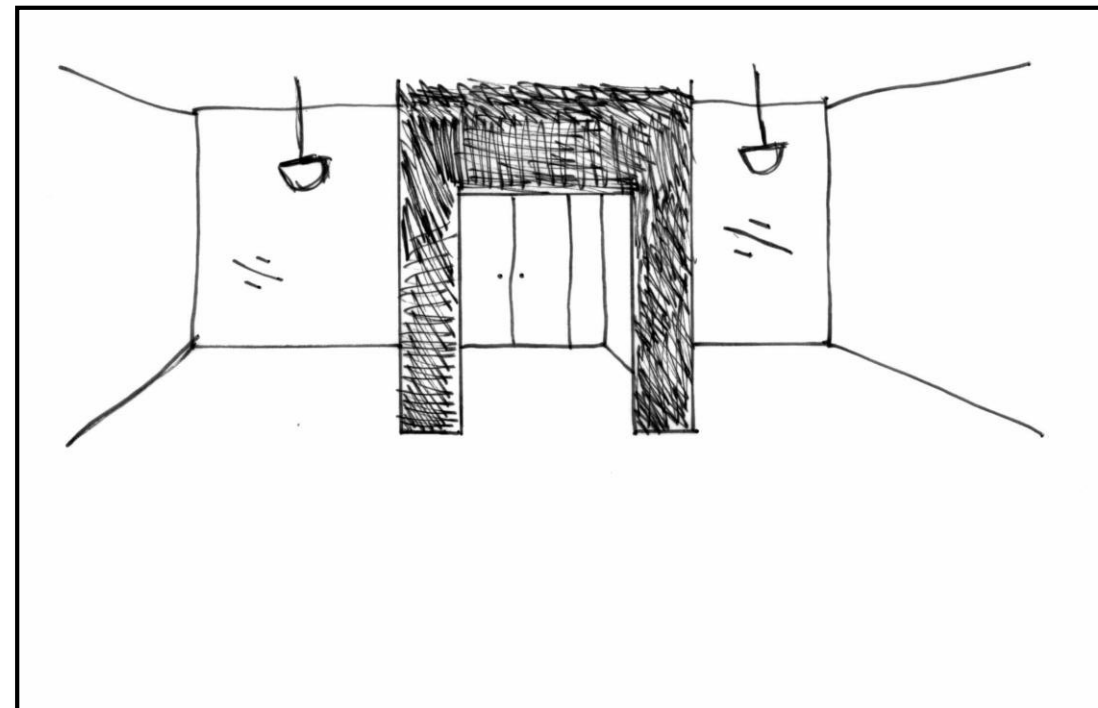
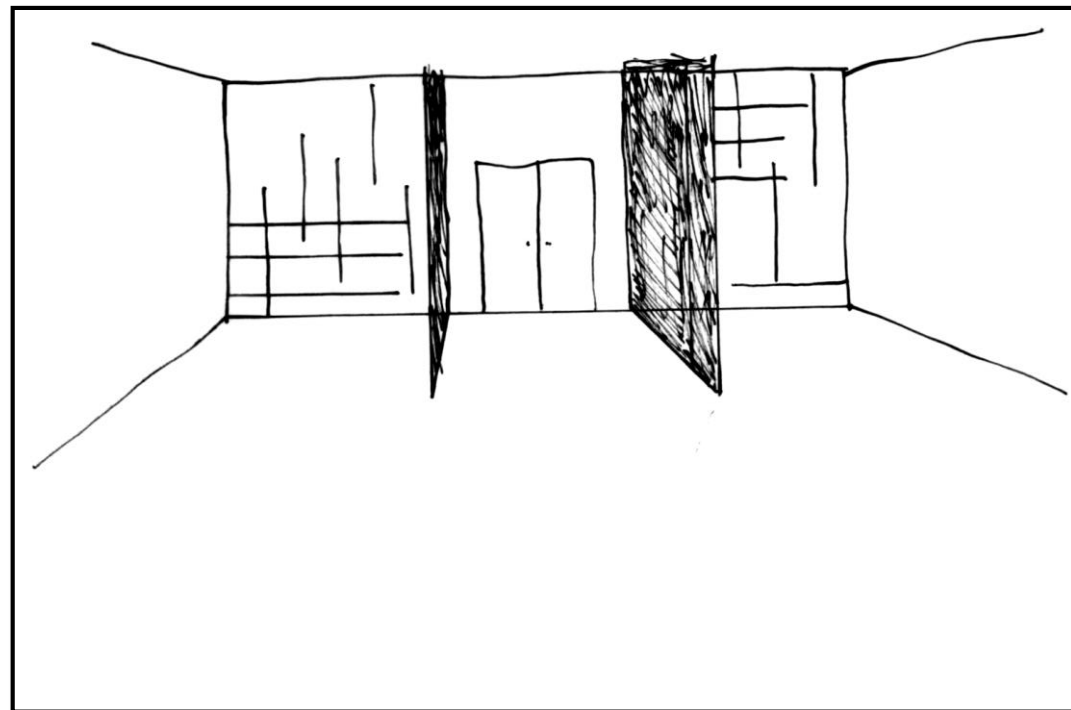
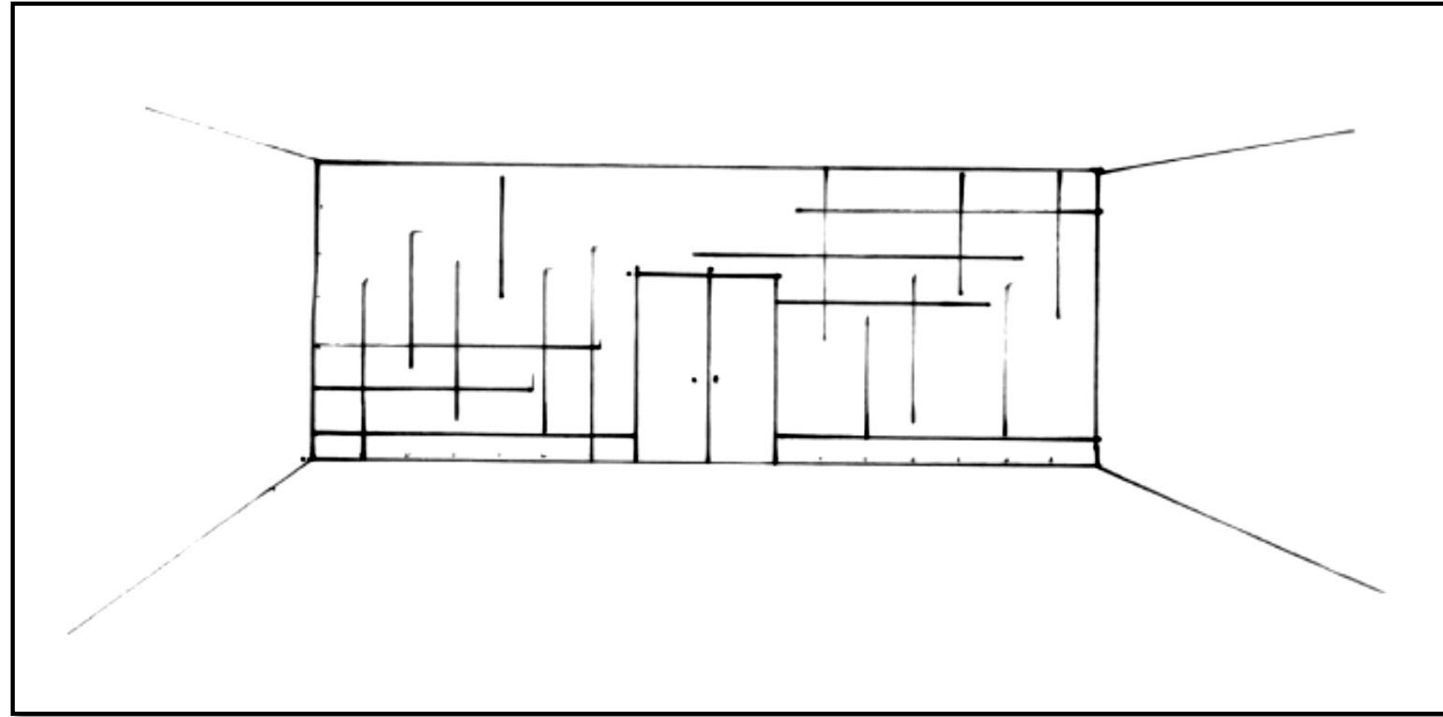
Assignment 6:

Space Plan Sketches



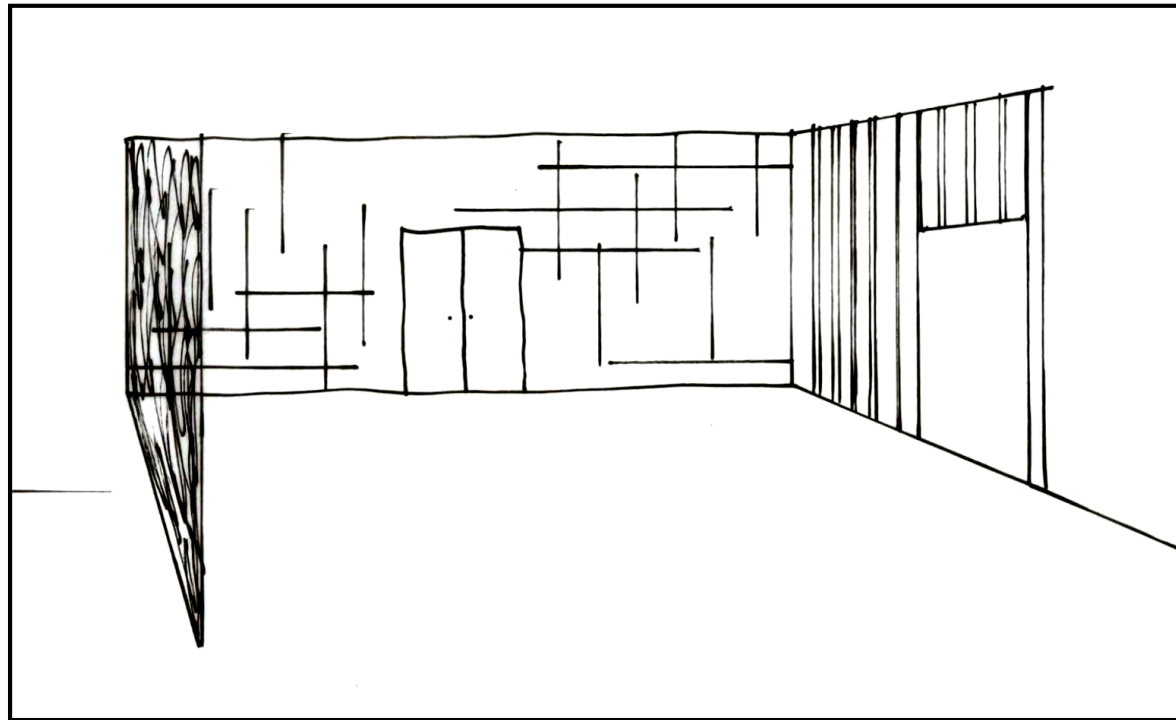
Assignment 7:

Entry Sketches



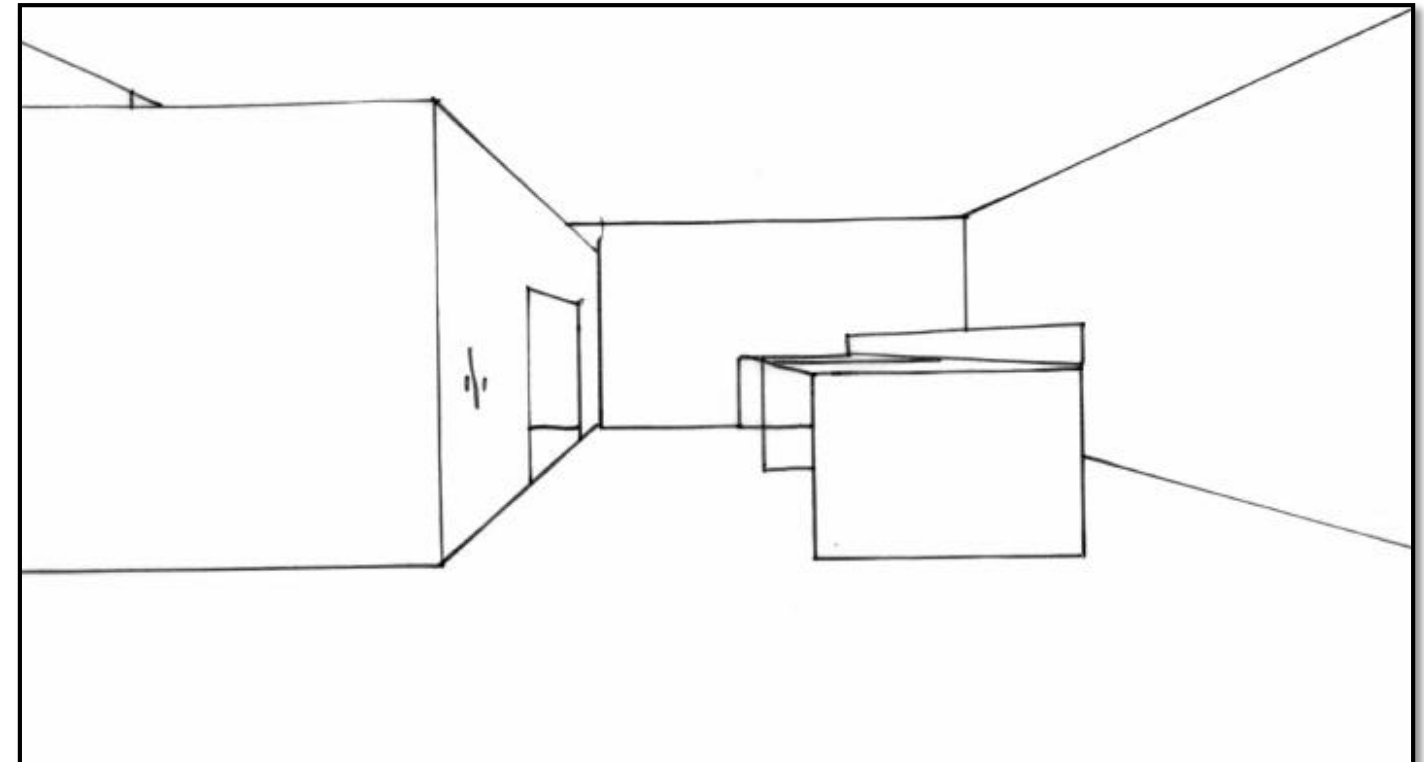
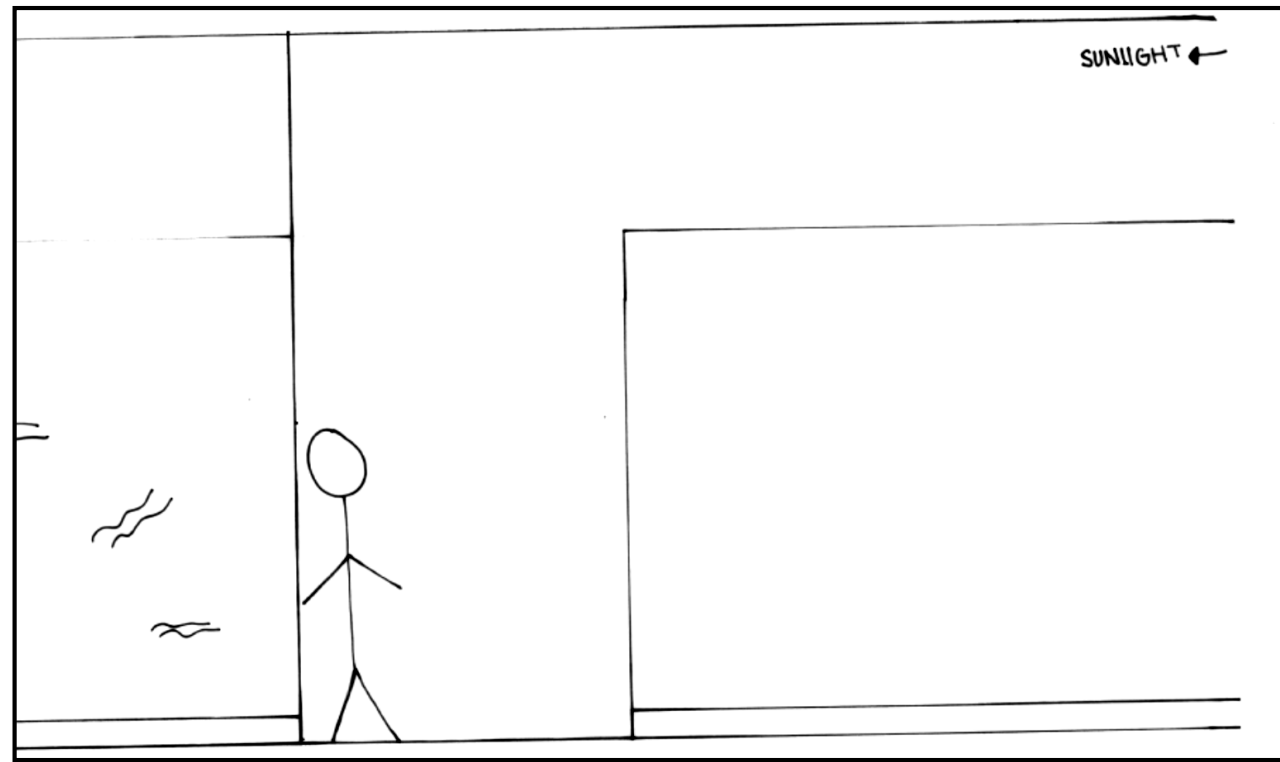
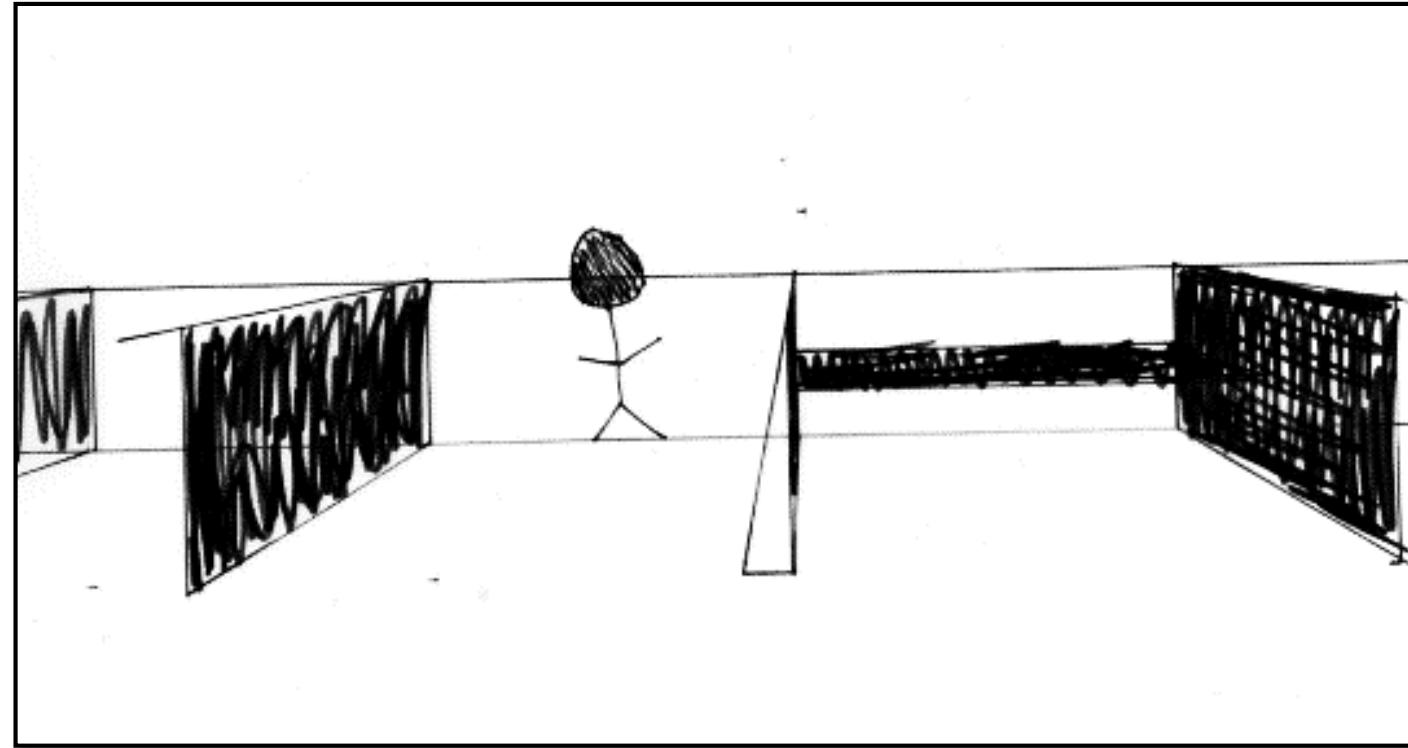
Assignment 7:

Entry Sketches



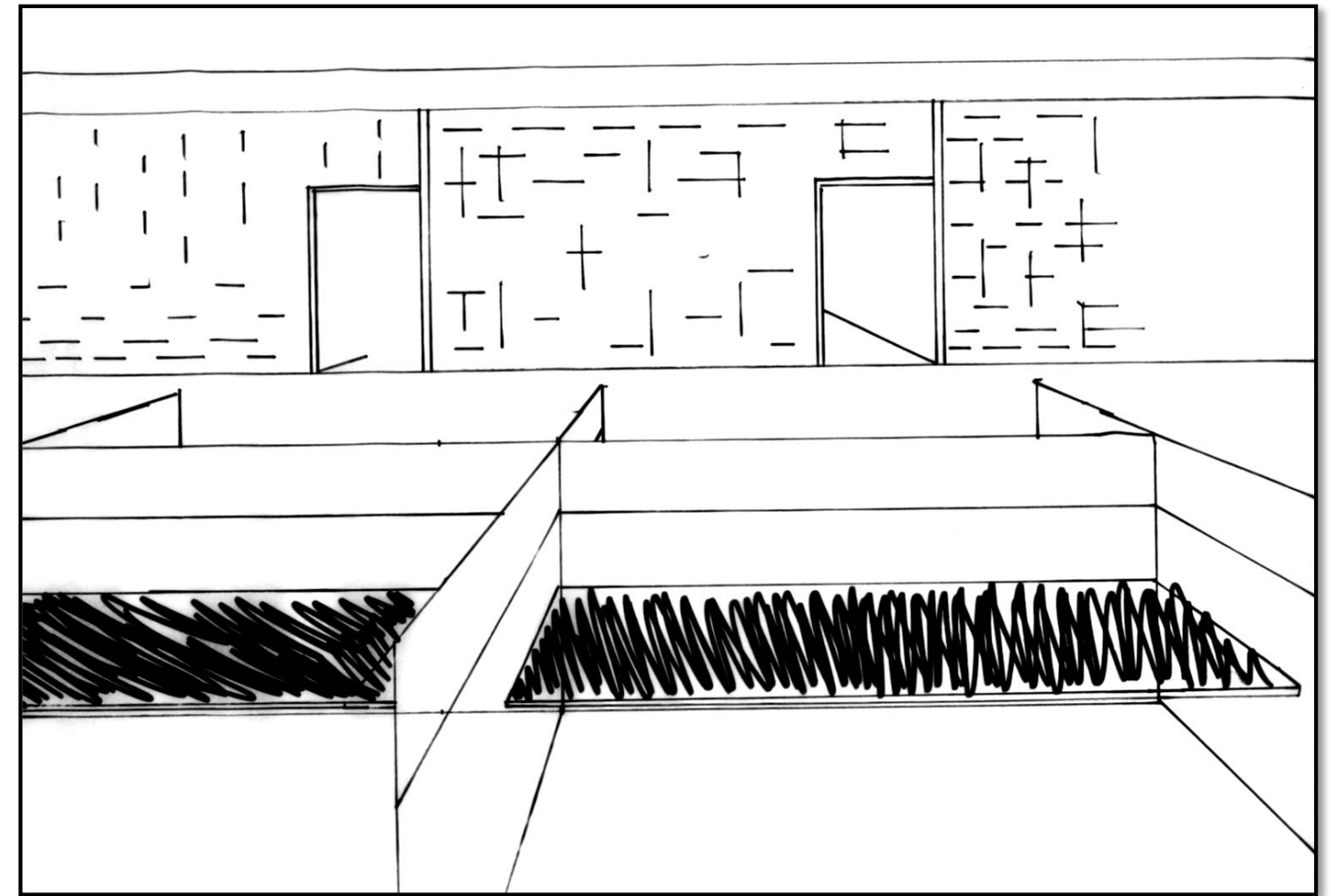
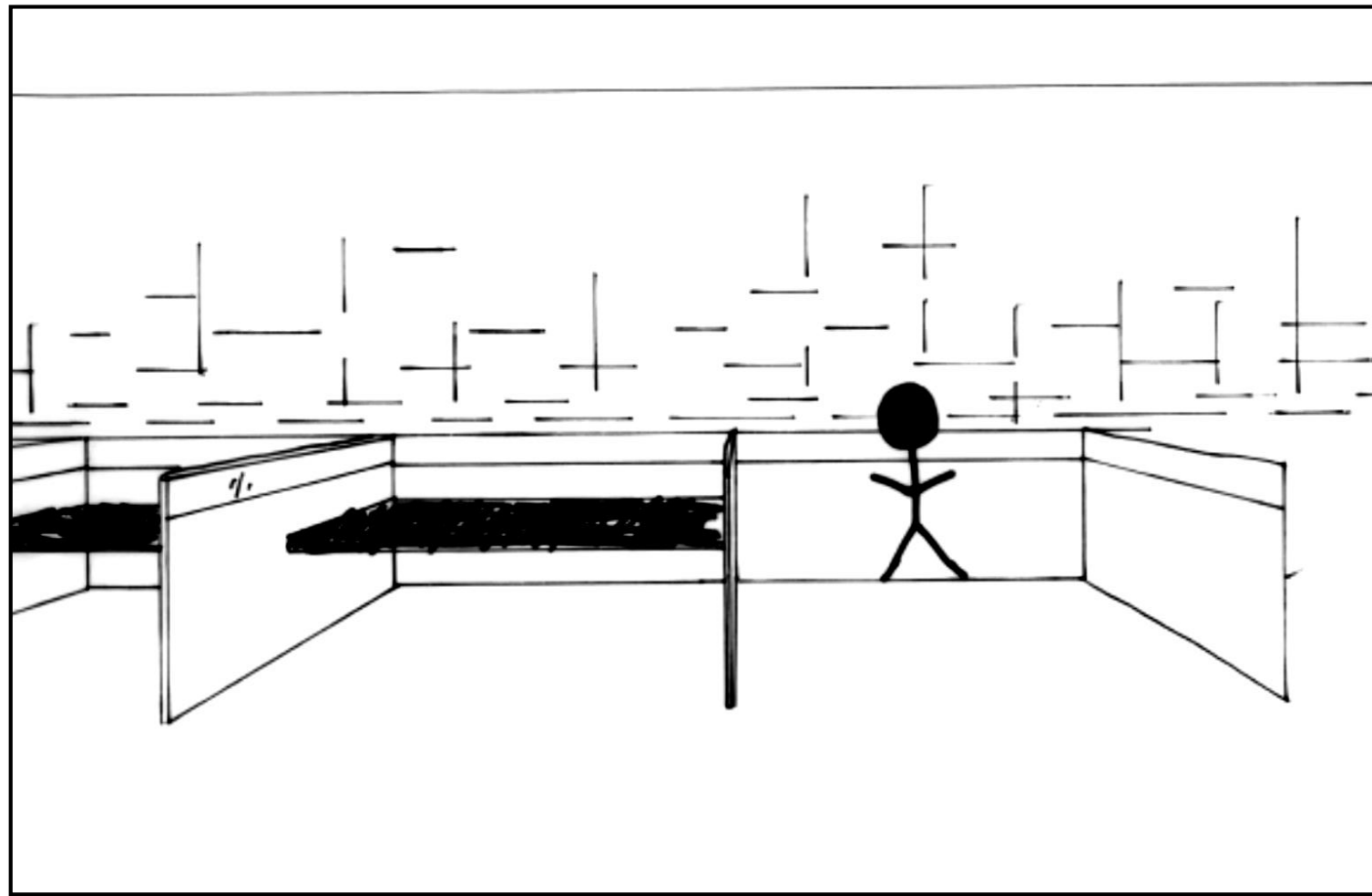
Assignment 7:

Main Corridor Sketches

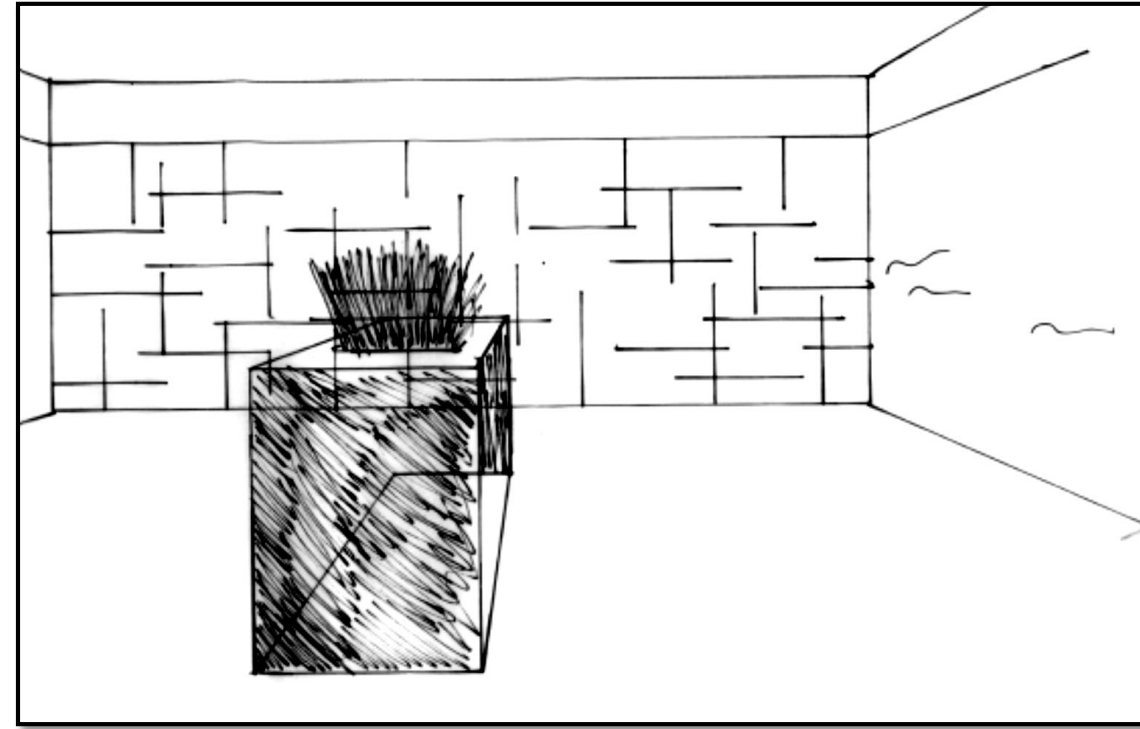
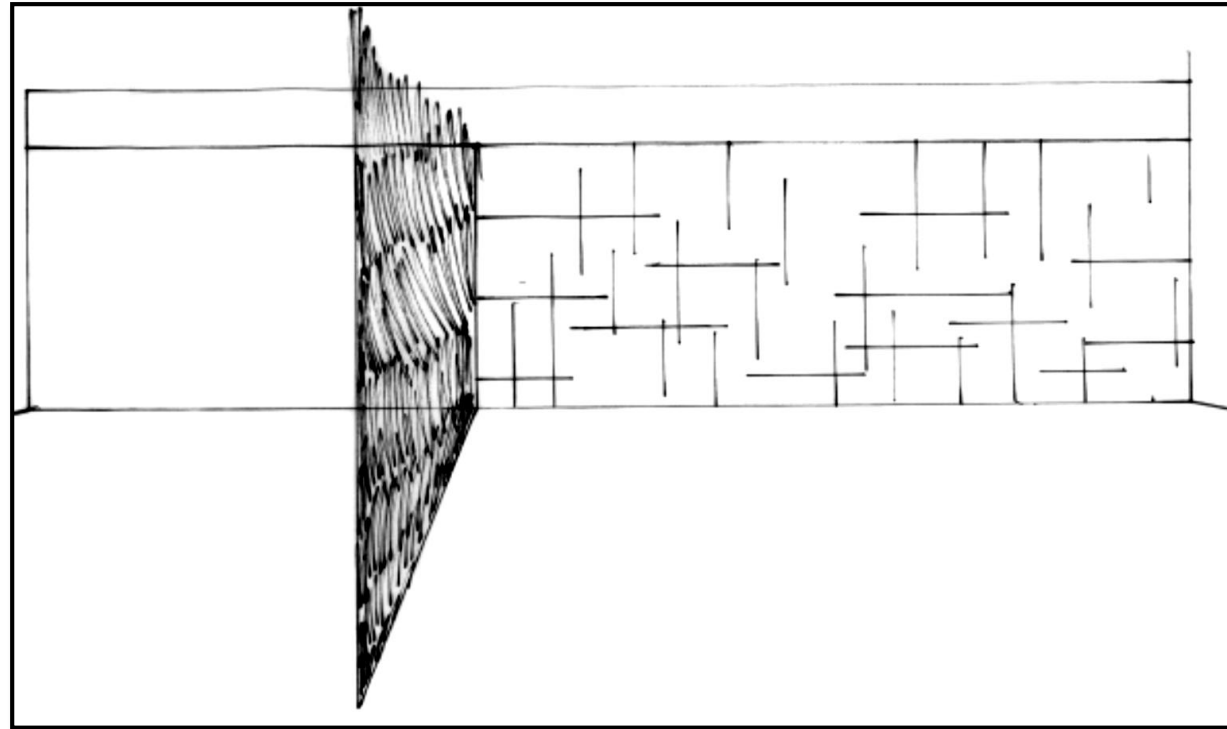
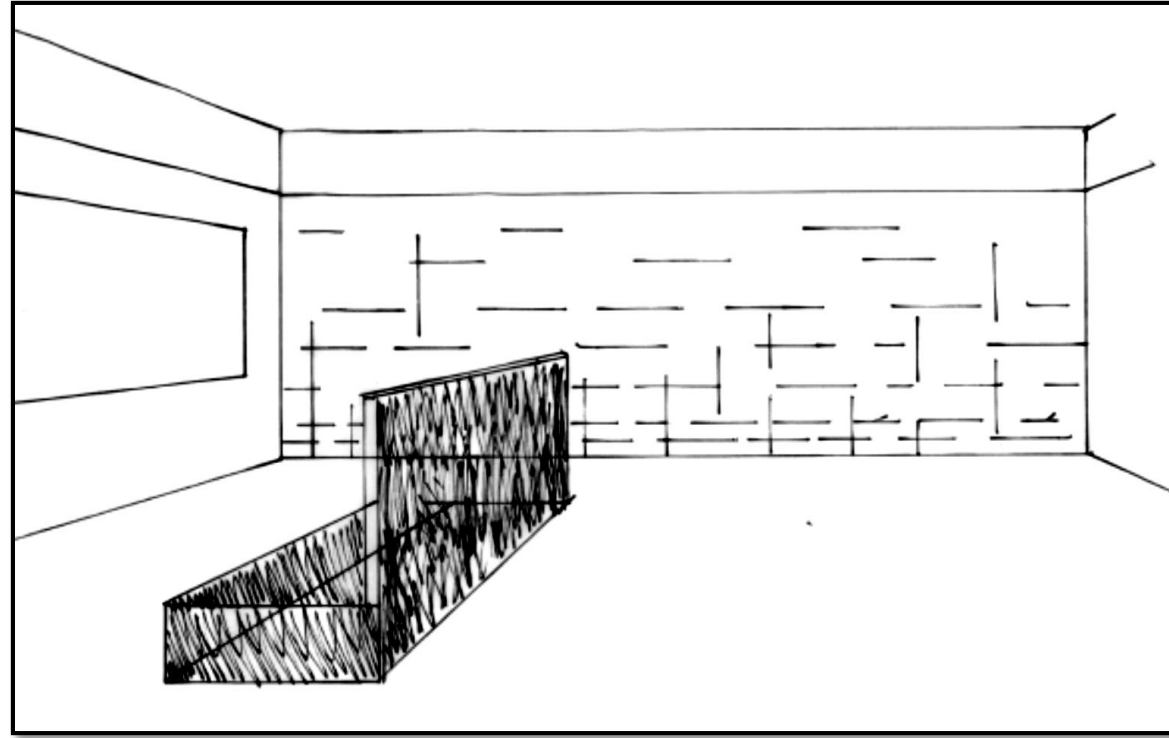


Assignment 7:

Main Corridor Sketches

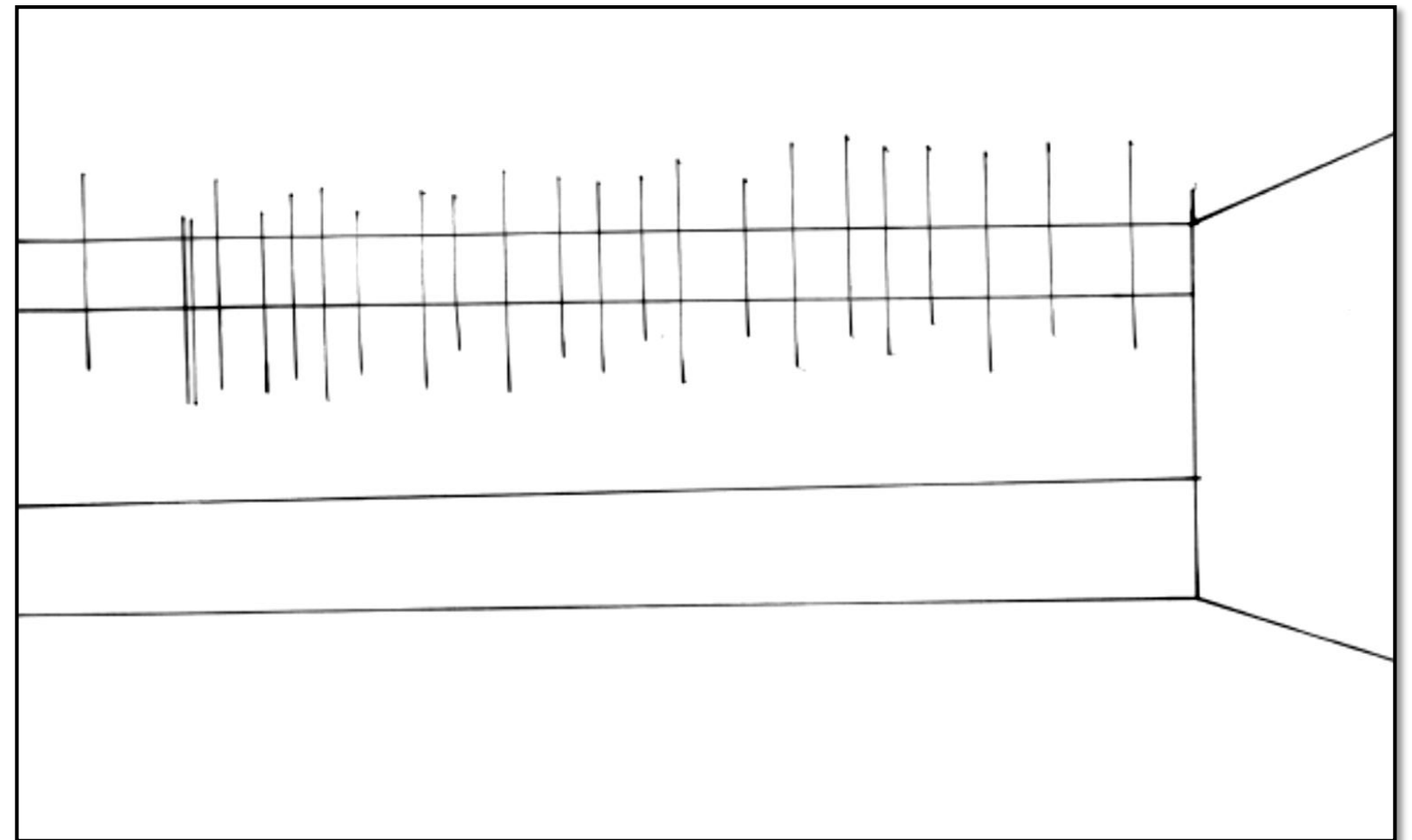
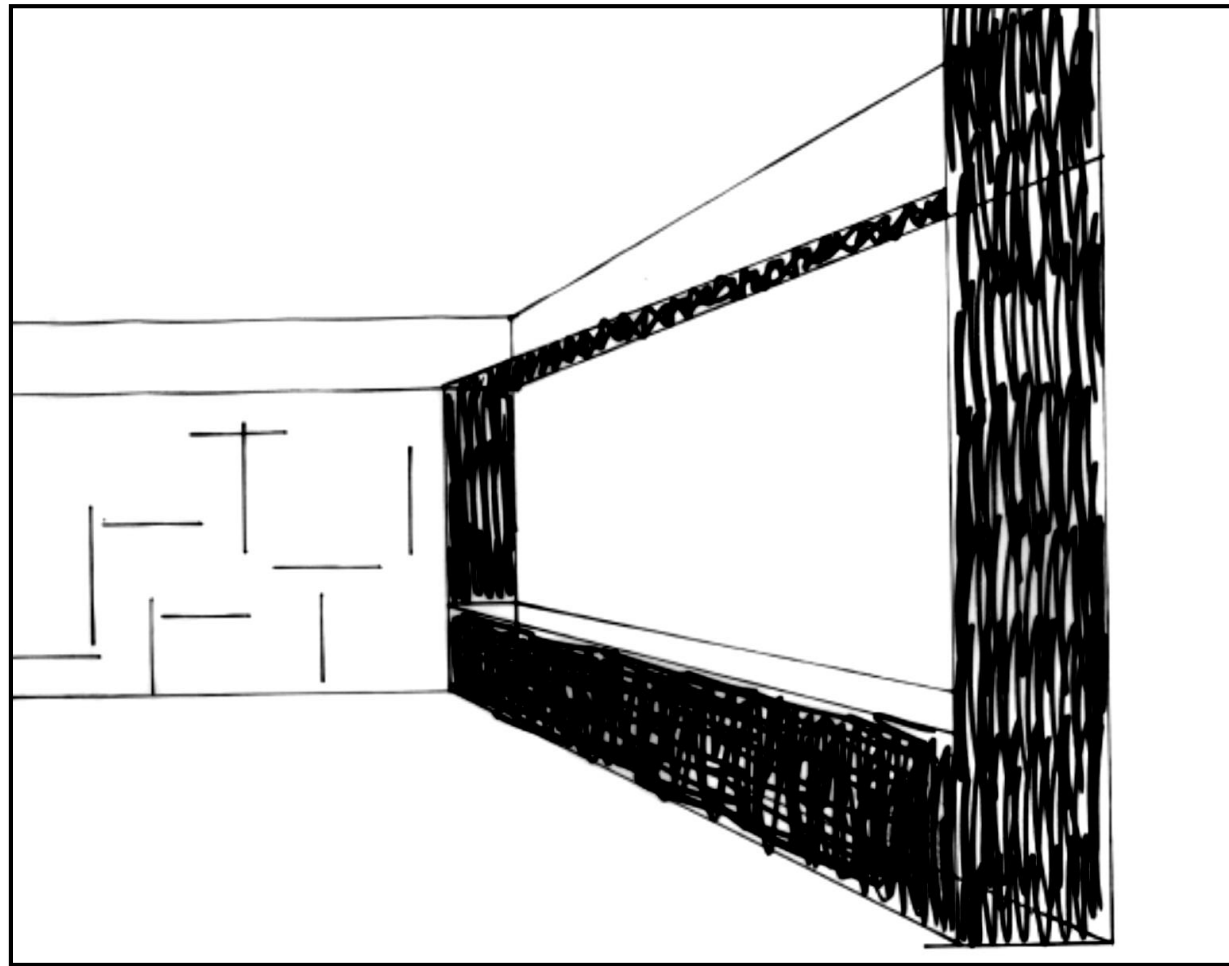


Assignment 8:
Lounge Sketches



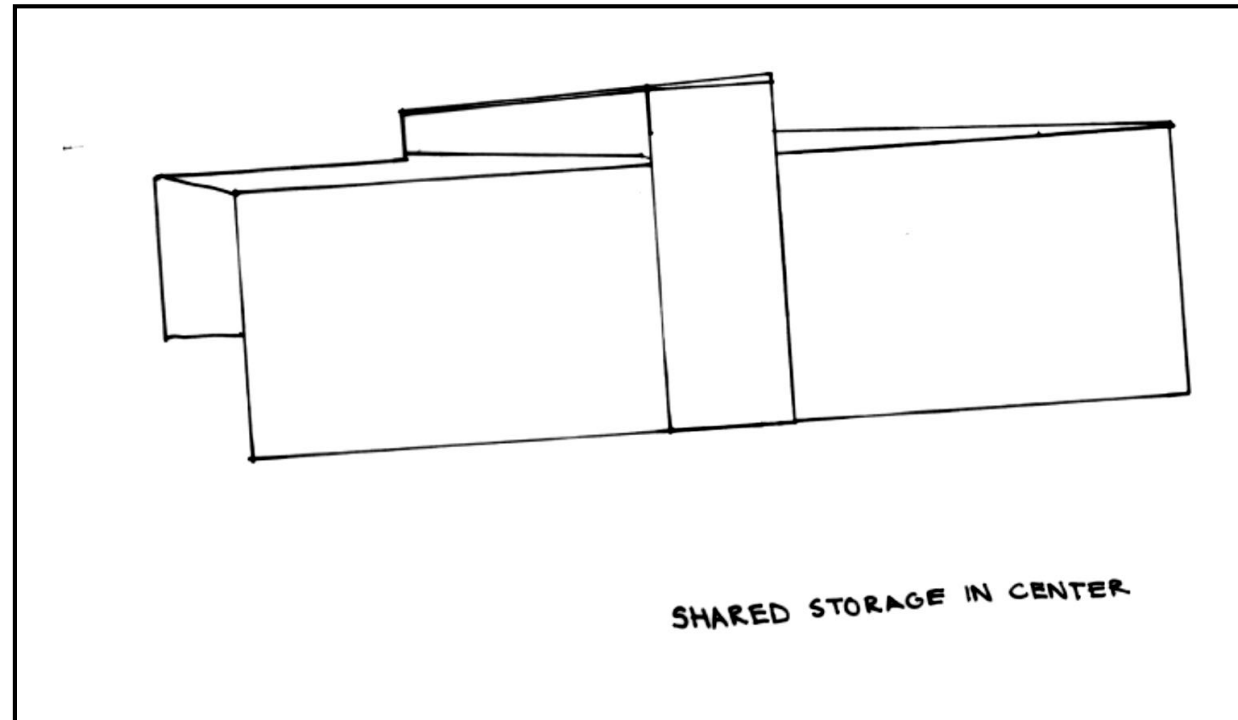
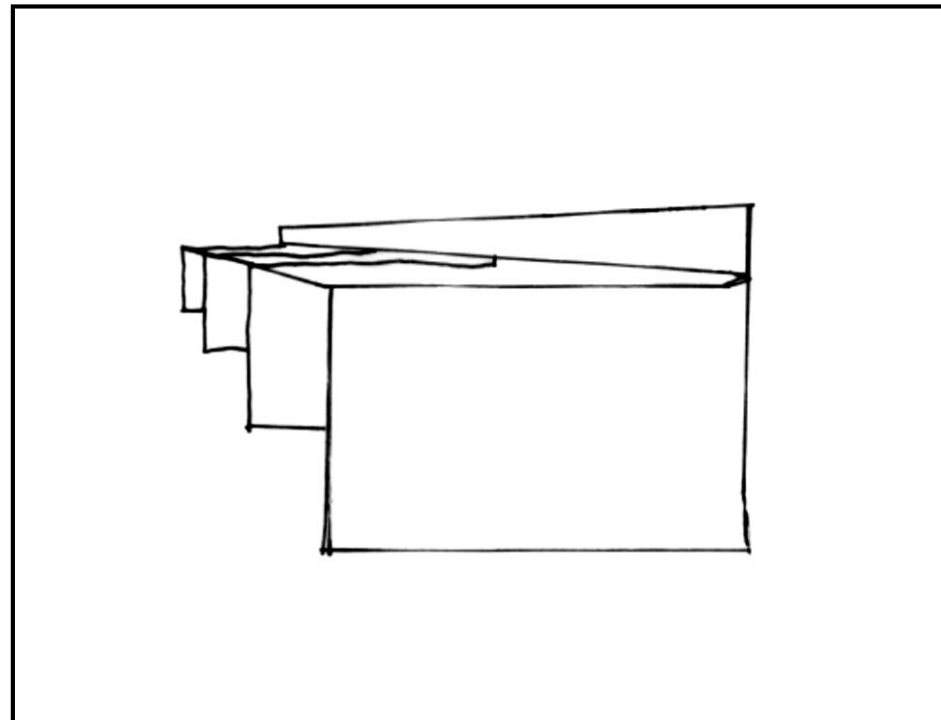
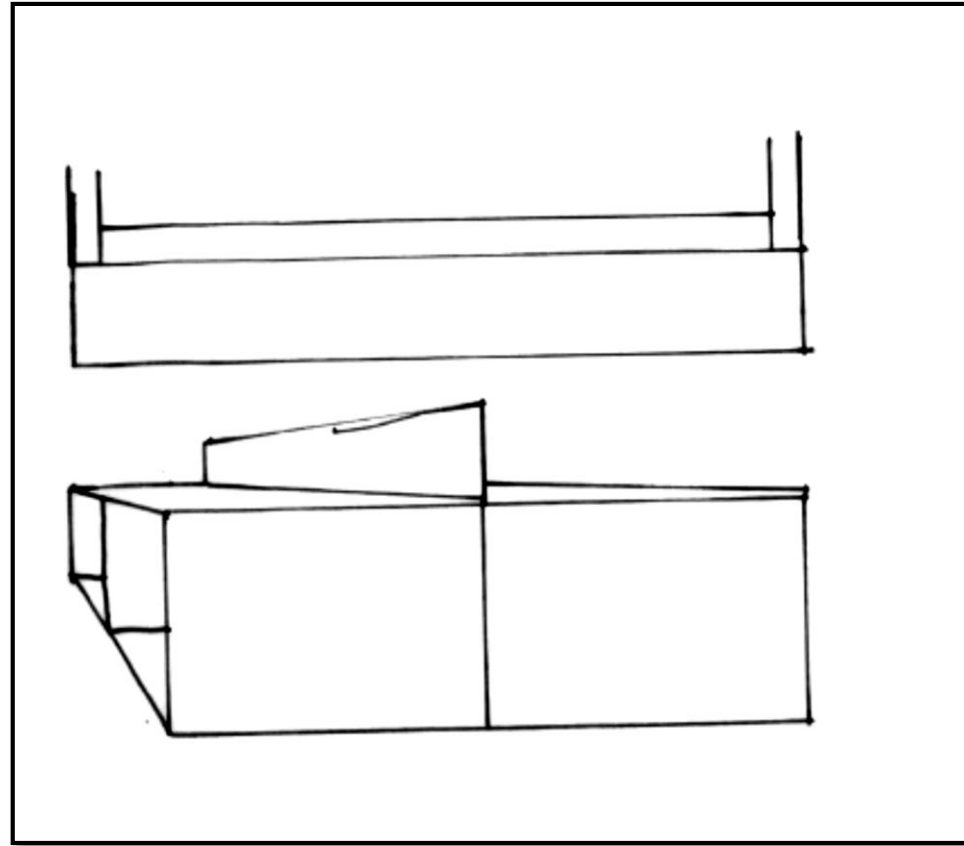
Assignment 8:

Lounge Sketches



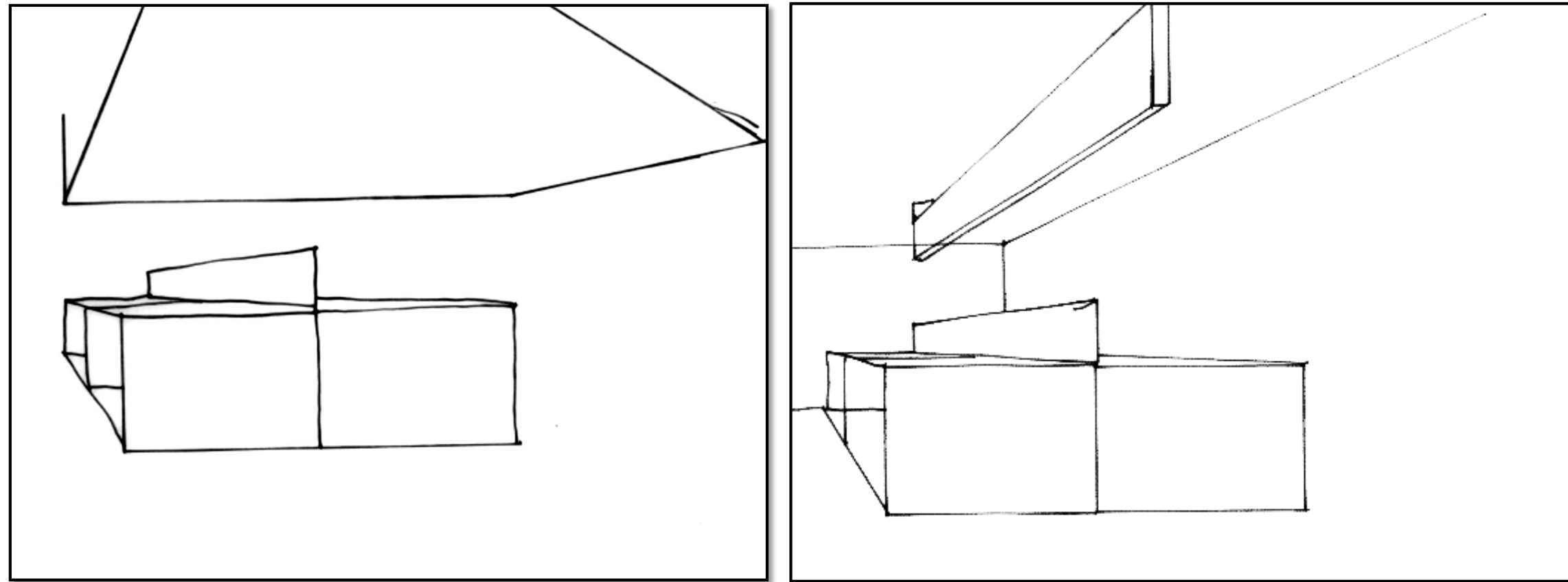
Assignment 8:

Open Work Area Sketches



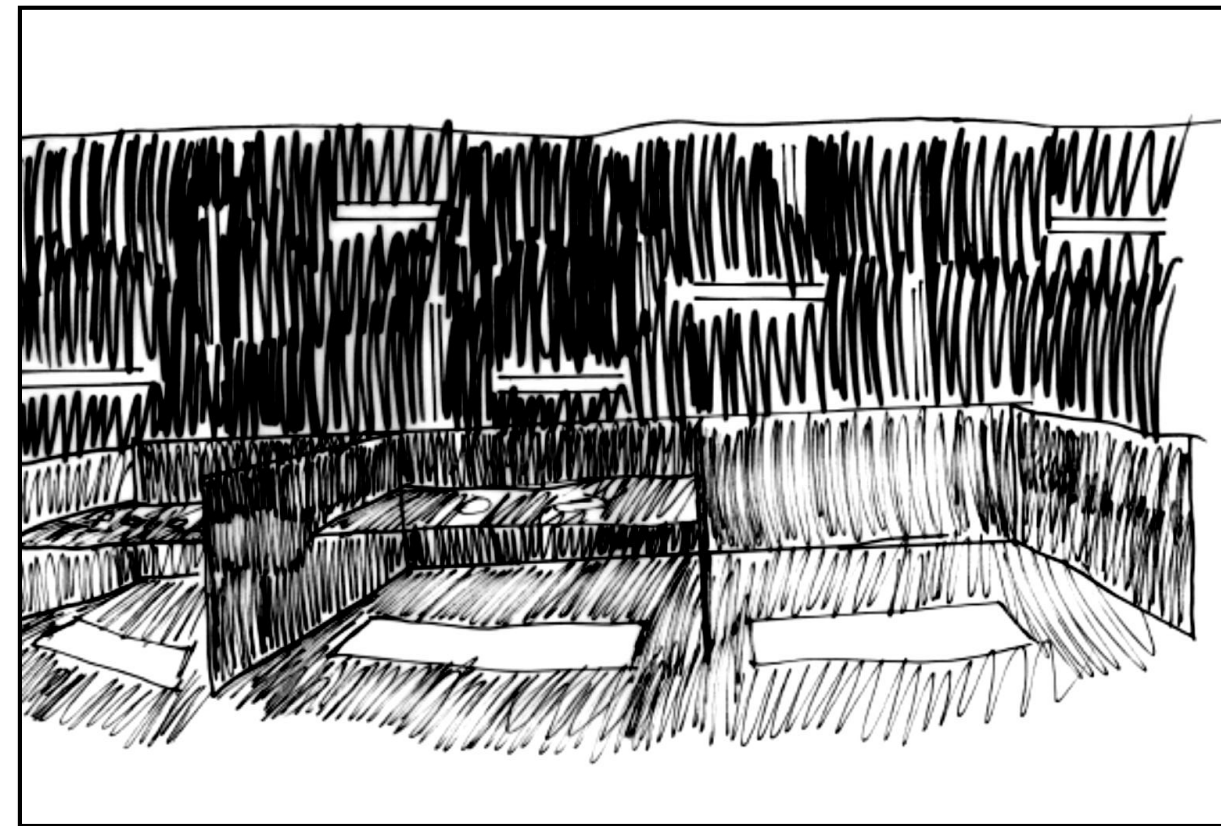
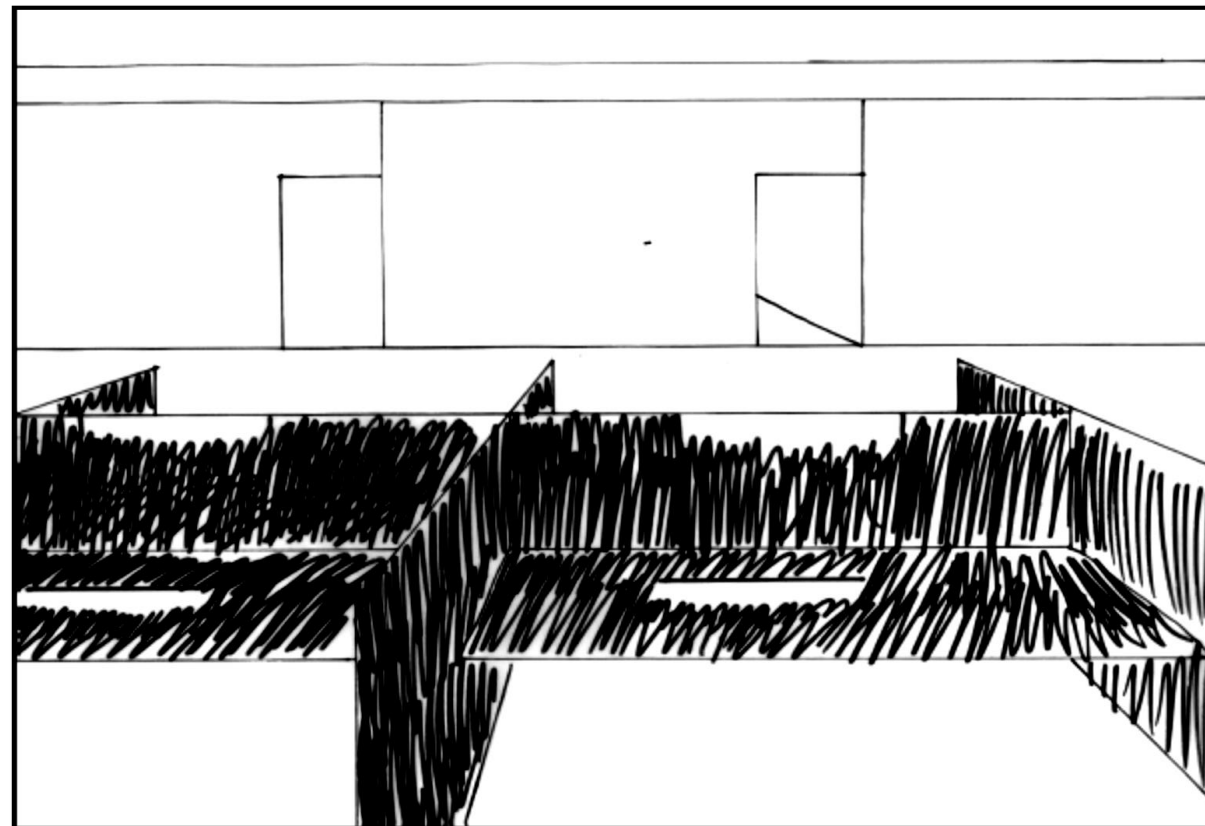
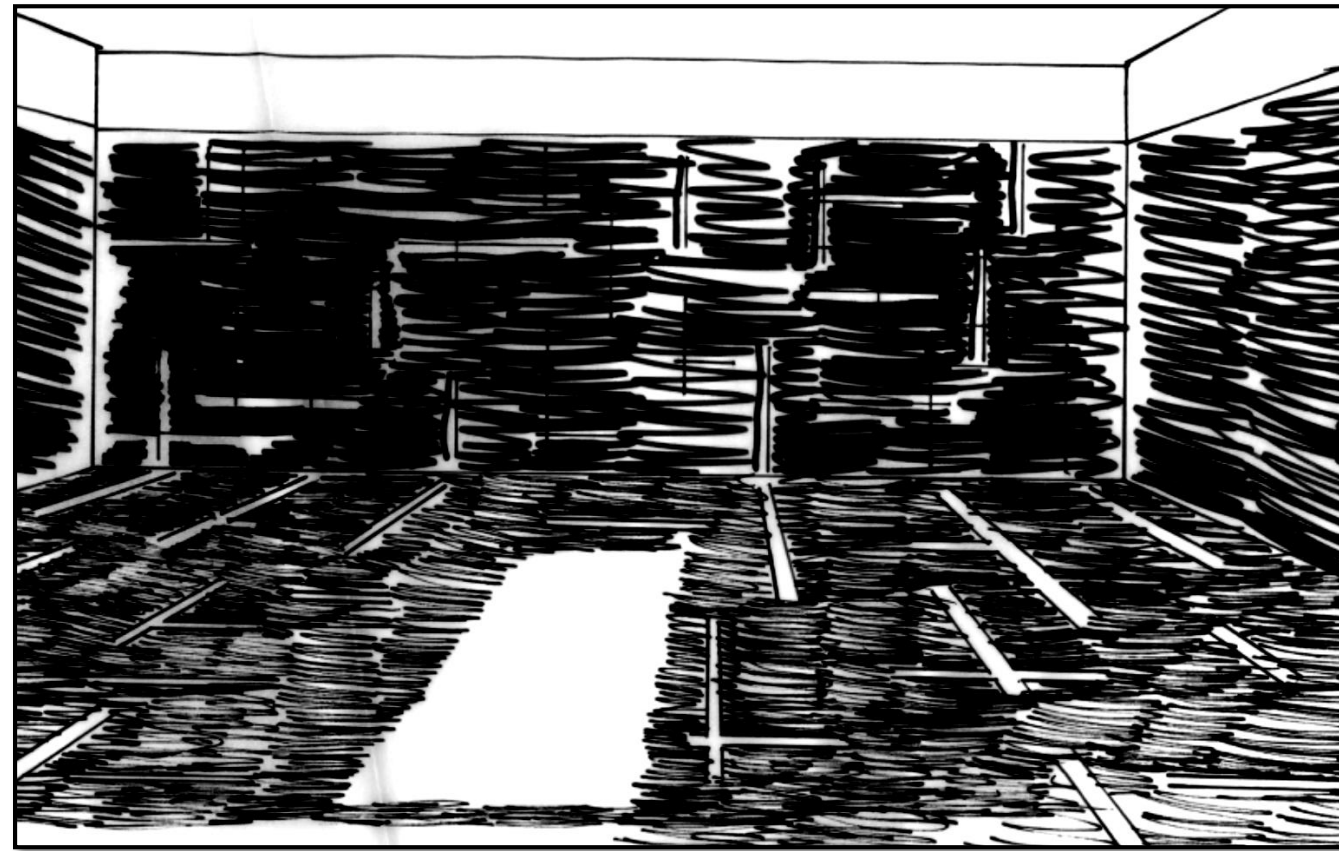
Assignment 8:

Open Work Area Sketches



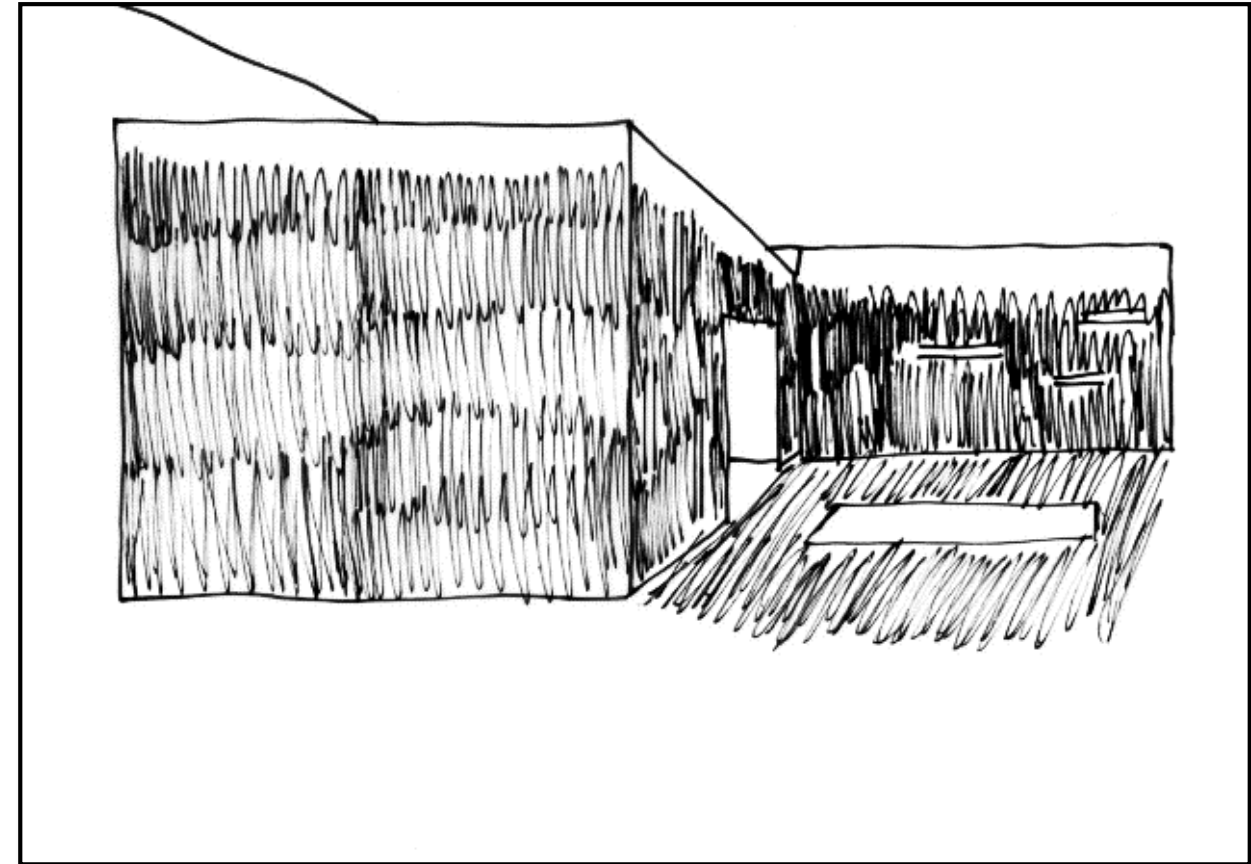
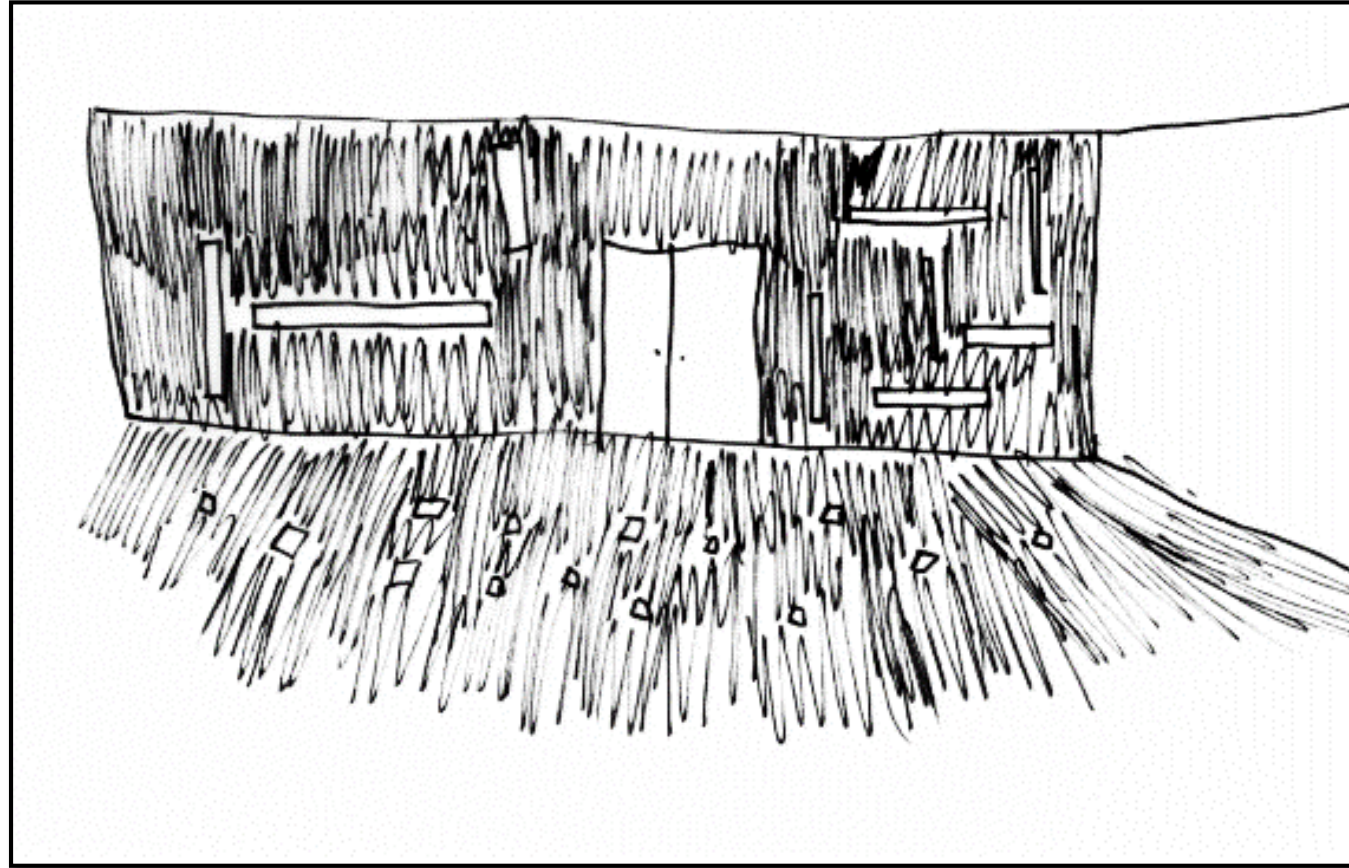
Assignment 9:

Light



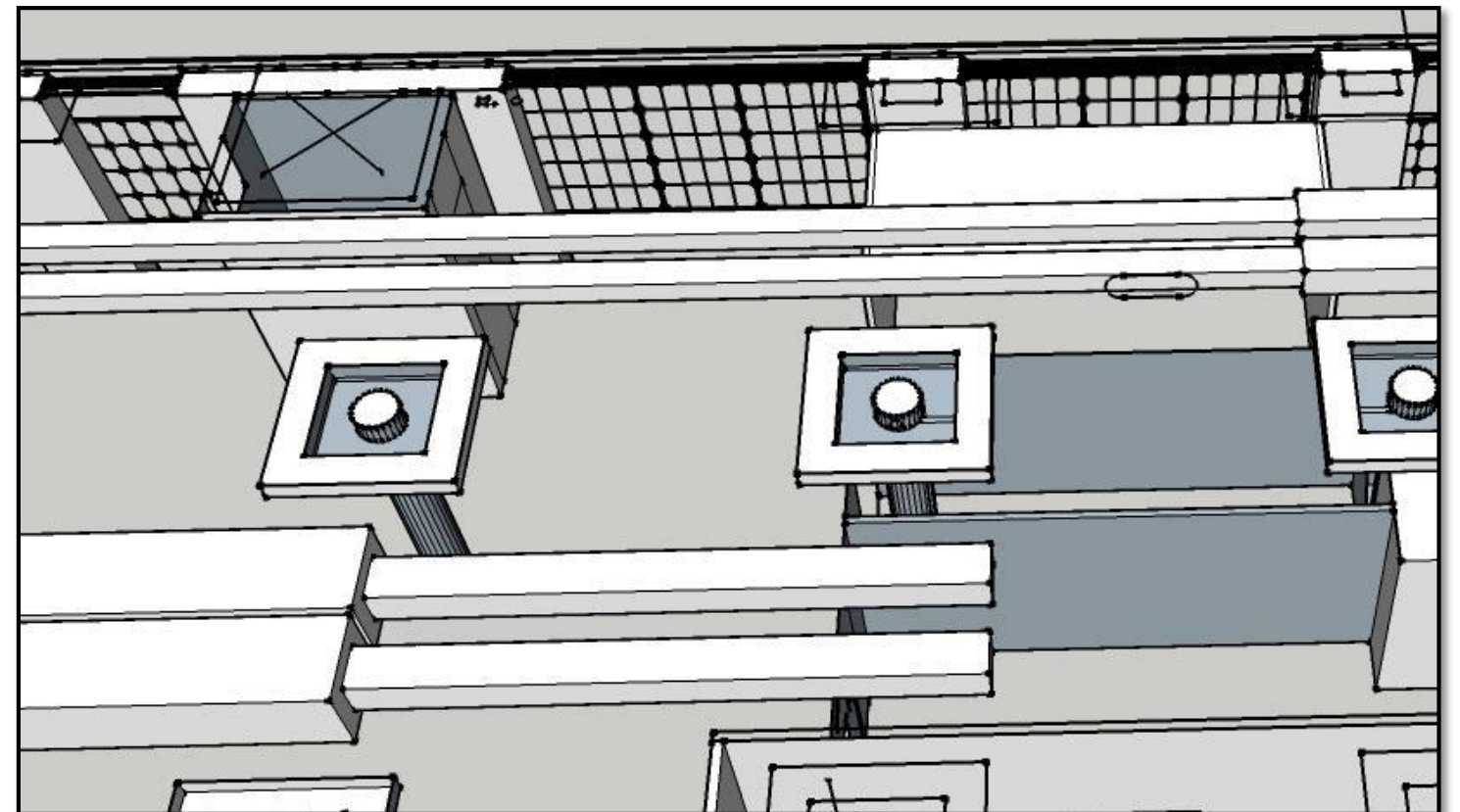
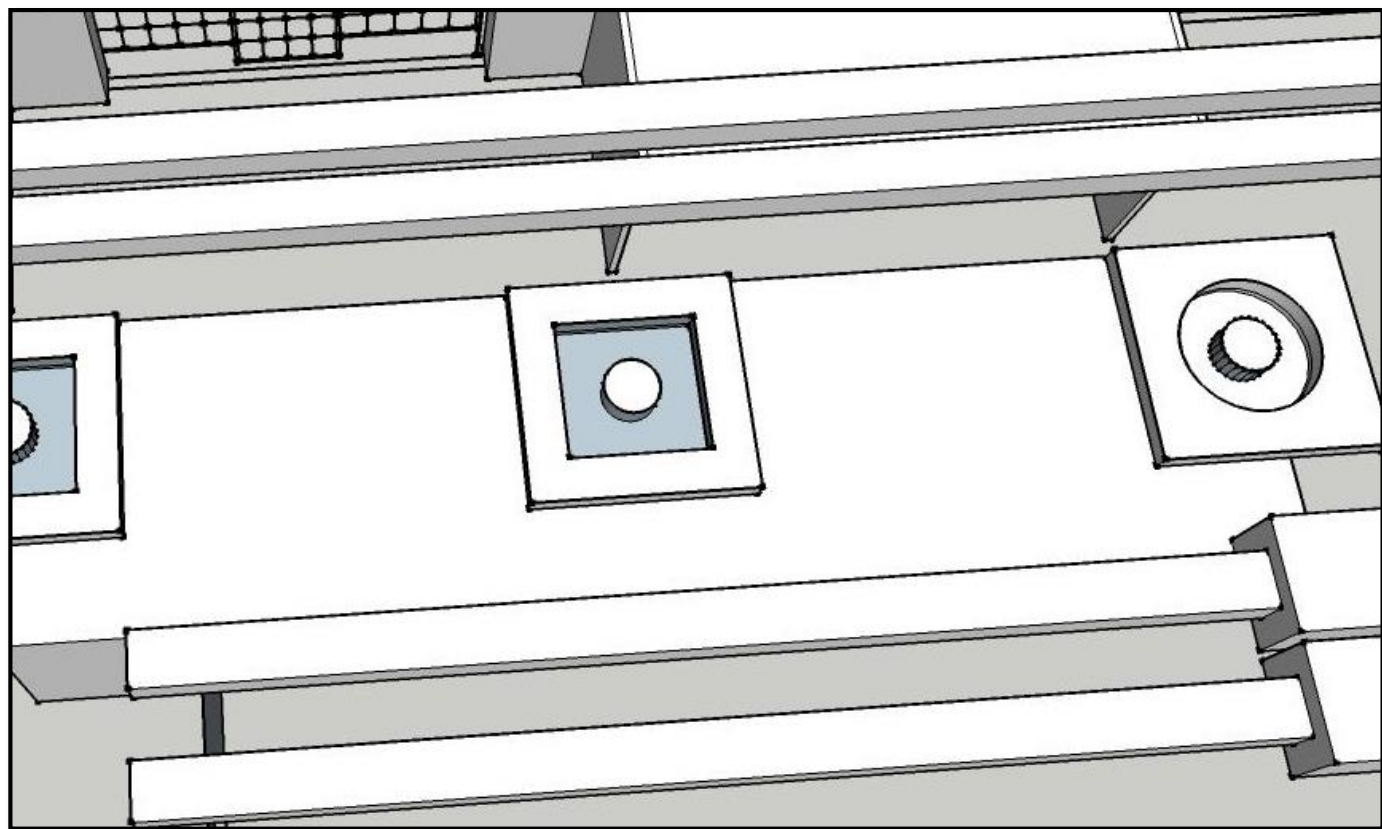
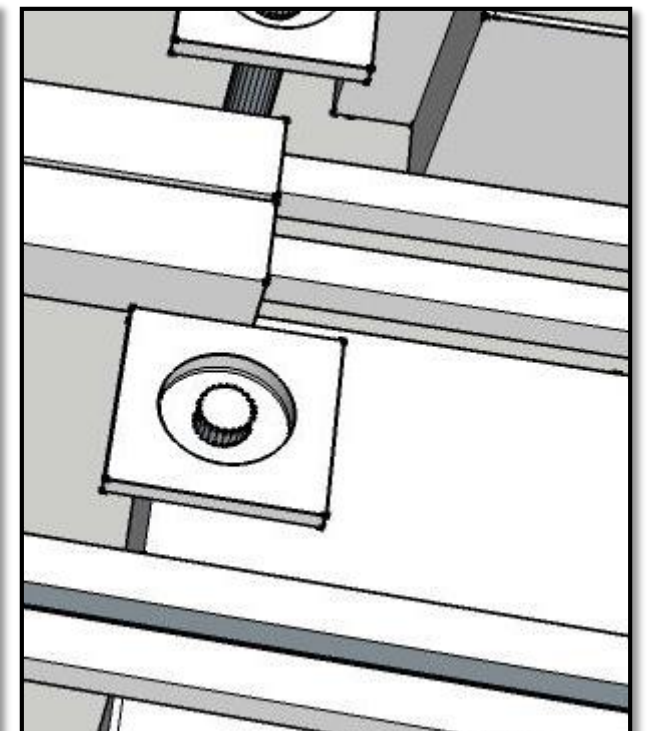
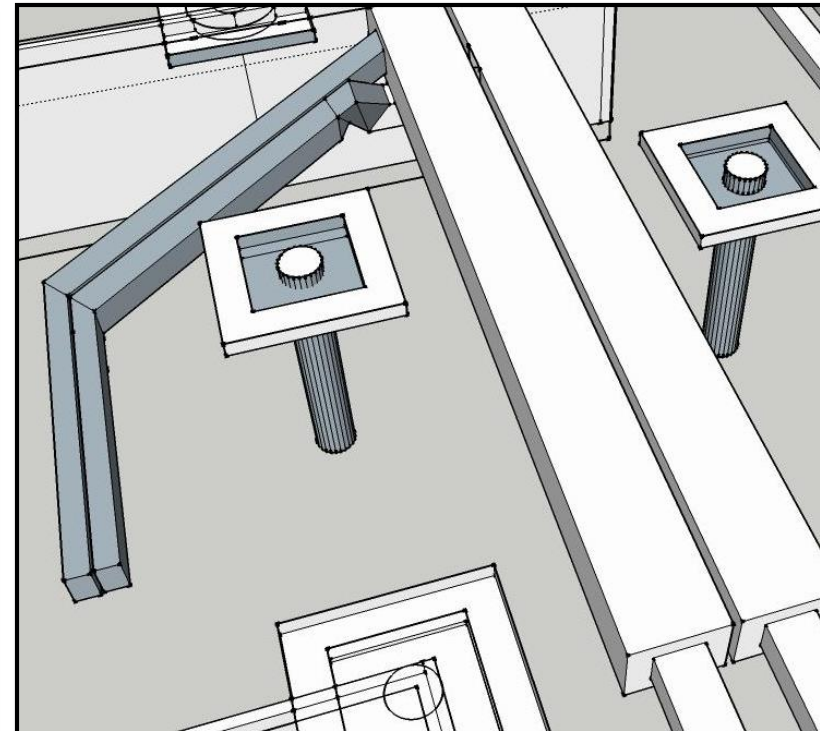
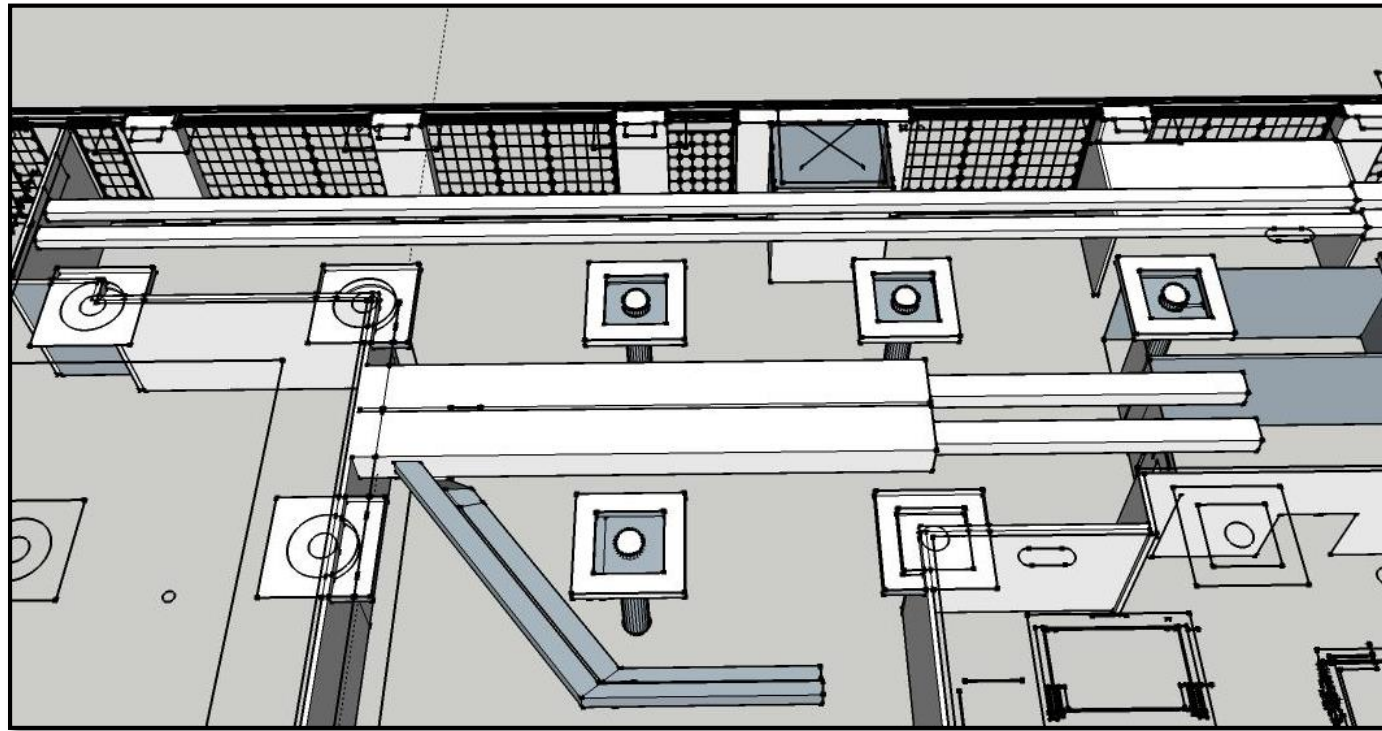
Assignment 9:

Light



Assignment 10:

Systems RCP

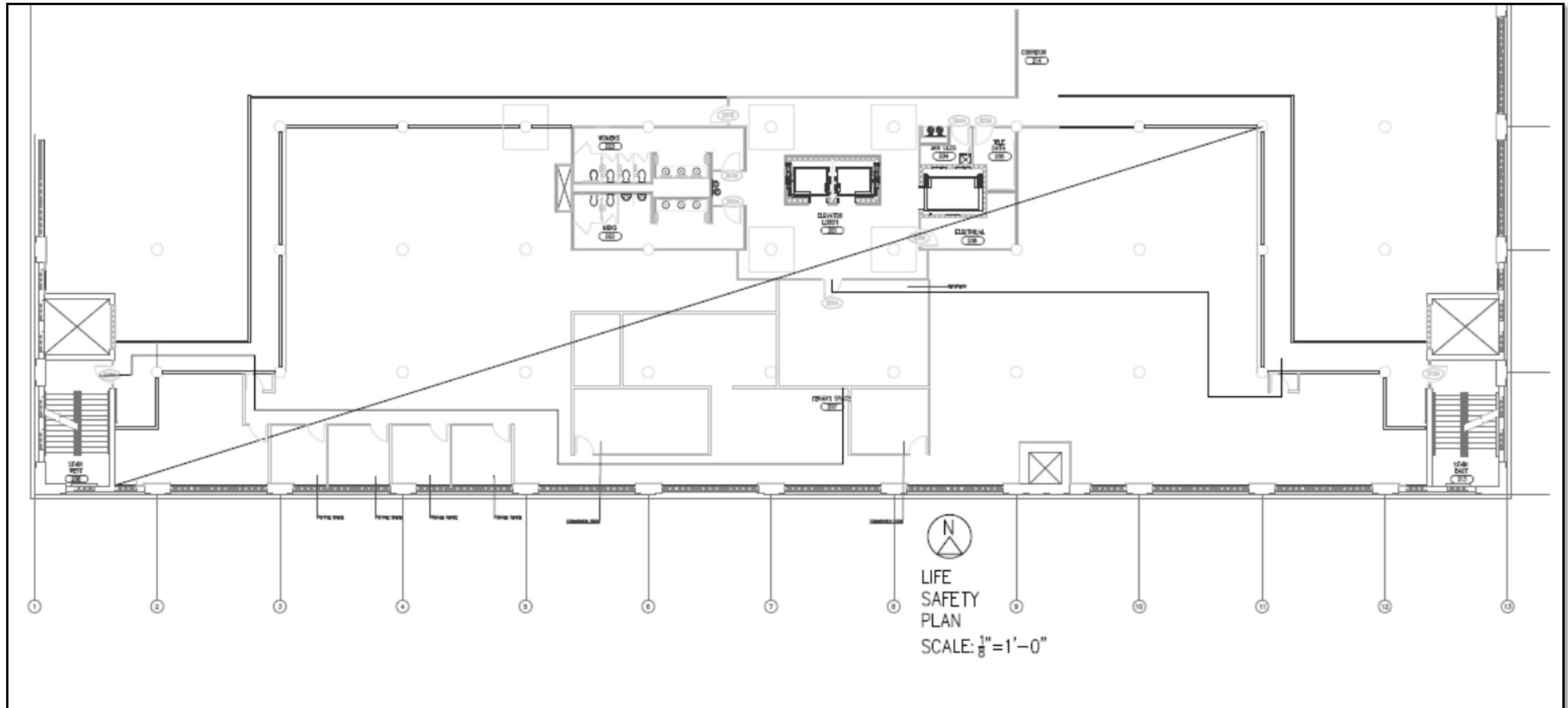


Assignment 10:
Lighting Model



Assignment 11:

AutoCAD Life Safety Plan



Assignment 11:

Lighting Analysis

$$\text{Maintained fc} = \frac{(\text{Number of lamps}) \times (\text{Initial lamp lumens}) \times \text{LLF} \times \text{CU}}{\text{Area}}$$


$$\text{Maintained fc} = \frac{(4) \times (3130) \times .72 \times 30}{100} = 2,704$$



Assignment 10:

Lighting Analysis

ONDARIA LED



LED
3000K, 3500K,
or 4000K

**Surface, Recessed,
Semi-Recessed, or
Pendant Mount**

Medium 25"

Applications: Directionally neutral, the circular luminaire blends flexibly into any room layout, creating a harmonious atmosphere. In this way, ONDARIA upgrades prestigious areas such as foyers, lobbies, communication rooms, lounges, corridors, and stairways.

Type: _____ Quantity: _____ Project: _____

[online Find it Fast 1117](#)

Medium 25"

ZUMTOBEL

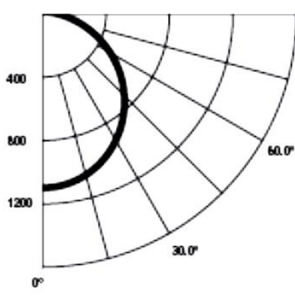
ONDARIA LED Pendant, Medium, Direct/Indirect

41W with 3130 lumens (direct); 48W with 3640 lumens (direct/indirect)

Photometric Data

ONDARIA Medium, 41W, 3500K, 80CRI, Direct

Candela Distribution



Vertical Angle	Horizontal Angle			Total Lumens
	0°	45°	90°	
0°	1091	1091	1091	
5°	1086	1086	1086	103.2
15°	1045	1045	1045	294.8
25°	966	966	966	445.0
35°	853	853	853	533.5
45°	714	714	714	550.7
55°	554	554	554	495.4
65°	382	382	382	377.4
75°	203	203	203	215.3
85°	50	50	50	58.2
90°	0	0	0	

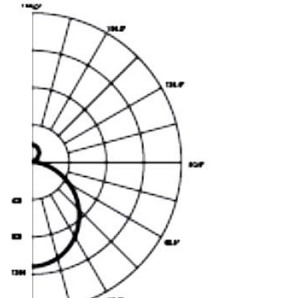
Coefficients Of Utilization - Zonal Cavity Method

Effective Floor Cavity Reflectance 0.20

RC	80				70				50				30			
	70	50	30	10	70	50	30	10	50	30	10	50	30	10		
0	119	119	119	119	116	116	116	116	111	111	111	106	106	106		
1	290	277	319	256	234	277	216	352	278	312	343	280	209	334		
2	187	215	233	251	189	212	232	249	212	229	244	212	227	240		
3	157	170	179	196	158	169	178	185	168	176	183	167	174	180		
4	135	139	142	144	135	139	141	144	137	140	142	136	139	141		
5	119	117	116	115	117	116	115	115	115	114	114	114	113	113		
6	104	100	97	94	100	99	96	94	99	96	94	97	95	93		
7	93	87	82	79	92	86	82	79	95	81	78	84	80	78		
8	84	76	71	67	83	75	70	67	74	70	67	73	69	66		
9	77	67	62	58	76	67	61	58	66	61	57	65	61	57		
10	70	60	54	50	69	60	54	50	59	54	50	58	53	50		

ONDARIA Medium, 48W, 3500K, 80CRI, Direct/Indirect

Candela Distribution



Vertical Angle	Horizontal Angle			Total Lumens
	0°	45°	90°	
0°	1109	1109	1109	
5°	1104	1104	1104	104.8
15°	1062	1062	1062	299.3
25°	979	979	979	451.0
35°	863	863	863	539.3
45°	720	720	720	554.8
55°	556	556	556	496.8
65°	380	380	380	375.4
75°	199	199	199	211.1
85°	50	50	50	58.2
90°	4	4	4	

Coefficients Of Utilization - Zonal Cavity Method

Effective Floor Cavity Reflectance 0.20

RC	80				70				50				30			
	70	50	30	10	70	50	30	10	50	30	10	50	30	10		
0	116	116	116	116	111	111	111	111	103	103	103	96	96	96		
1	210	240	285	317	211	248	281	311	246	274	301	244	268	291		
2	172	193	210	224	172	191	207	221	188	203	215	185	198	209		
3	145	155	162	168	144	153	160	165	150	156	161	147	153	158		
4	125	128	129	130	124	126	128	129	123	125	126	120	122	123		
5	110	107	106	104	108	106	104	103	103	102	101	100	100	99		
6	98	92	88	86	95	91	87	85	88	85	83	85	83	82		
7	88	80	75	72	85	79	74	71	76	73	70	74	71	69		
8	79	70	65	61	77	69	64	61	67	63	59	65	61	58		
9	72	63	57	53	70	61	56	52	59	55	51	58	53	50		
10	66	56	50	46	64	55	49	46	53	48	45	52	47	44		