

Summary

Personnel Totals Per Department	Personnel Totals		Personnel				Support	Total Sq. Feet	Circulation	Carpetable Sq. Feet
	Current	Future	Sq. Feet	Computer	Printer	Fax	Sq. Feet			
Executive	2	2	136	2	1	-	440	576	1.54	887
Administration	2	3	108	4	1	-	210	318	1.54	490
Account Admin	12	13	724	26	3	3	190	914	1.54	1,408
Creative Services	4	72	2,720	7	1	-	500	3,220	1.54	4,959
Support	-	-	-	-	-	-	1,595	1,595	1.54	2,456
Totals:	20	90	3,688	39	6	3	2,935			10,199

Executive

PERSONNEL

Position	Personnel Totals		Unit Square Ft.		Extended Sq. Feet	Equipment			Notes
	Current	Future	Office	Workstation		PC	Printer	Fax	
					0				
					0				
					0				
					0				
Director	1	1	100		100	1			Locate near Reception
					0				
					0				
					0				
Administrative Assistant	1	1		36	36	1	1		Locate directly outside Mgr office
					0				
					0				
					0				
					0				
Personnel Totals:	2	2			136	2	1	0	

Department Summary Information:

Personnel	136 Square Ft.
Equipment	440 Square Ft.
Sub Total:	576 Square Ft.
Circulation	1.54
Total Carpetable:	887.04 Square Ft.

Interviewee:
 Interview Date:
 Revision Submitted:
 Sign Off: _____

SUPPORT/EQUIPMENT SPACES

Space	Support/Equipment		Unit Square Feet	Extended Sq. Feet	Location	Notes
	Current	Future				
				0		
Waiting Area	1	0	200	0	Visible from Admin Asst	Seating for 4 guests
				0		
Pantry	0	1	100	100	Near Admin Assts	
				0		
Fax/Copy	0	1	120	120	Near Admin Assts	
				0		
Storage	1	1	100	100		Shelving
				0		
File Drawers	50	40	3	120		3-Hi cabinets
				0		
Executive Conference Room	1	0	400	0	Adjacent to Waiting Area	Full AV
				0		
				0		
Support Totals:				440		

Department Notes:
 Entire company is progressive
 Space is attractive

Administration

PERSONNEL

Position	Personnel Totals		Unit Square Ft.		Extended Sq. Feet	Equipment			Notes
	Current	Future	Office	Workstation		PC	Printer	Fax	
Finance					0				
Manager	0	1		36	36	1			
Clerical	2	2		36	72	3	1		
					0				
					0				
					0				
					0				
					0				
					0				
					0				
					0				
Personnel Totals:	2	3			108	4	1	0	

Department Summary

Information:
 Personnel 108 Square Ft.
 Equipment 210 Square Ft.
Sub Total: 318 Square Ft.
 Circulation 1.54
Total Carpetable: 489.72 Square Ft.

Interviewee:

Interview Date:
 Revision Submitted:
 Sign Off: _____

SUPPORT/EQUIPMENT SPACES

Space	Support/Equipment		Unit Square Feet	Extended Sq. Feet	Location	Notes
	Current	Future				
Finance				0		
File Drawers	50	50	1.8	90	Lockable room	5-Hi cabinets
Equipment	1	1	120	120	Next to work area	3 Printers, shredder, work counter
				0		
				0		
				0		
				0		
				0		
				0		
				0		
				0		
Support Totals:				210		

Department Notes:

Account Admin

PERSONNEL

Position	Personnel Totals		Unit Square Ft.		Extended Sq. Feet	Equipment			Notes
	Current	Future	Office	Workstation		PC	Printer	Fax	
					0				
Account Executive	4	4	100		400	9			
					0				
Account Manager	4	4		36	144	12			
					0				
Administrative Assistant	1	3		36	108	3	3	3	Shared by entire Production staff
					0				
Account Assistant	3	2		36	72	2			
					0				
					0				
					0				
					0				
					0				
					0				
Personnel Totals:	12	13			724	26	3	3	

Department Summary
Information:
 Personnel 724 Square Ft.
 Equipment 190 Square Ft.
Sub Total: 914 Square Ft.
 Circulation 1.54
Total Carpetable: 1407.56 Square Ft.

Interviewee:
 Interview Date:
 Revision Submitted:
 Sign Off: _____

SUPPORT/EQUIPMENT SPACES

Space	Support/Equipment		Unit Square Feet	Extended Sq. Feet	Location	Notes
	Current	Future				
				0		
File Drawers	10	30	3	90	Near Admin Assts	3-Hi cabinets
				0		
Equipment	1	0	64	64	Near Admin Assts	Copier, work counter
				0		
Digital Storage	0	0	100	0		Shelving; can be spread throughout
				0		
Storage	0	1	100	100		Lockable room; shelving
				0		
				0		
				0		
				0		
				0		
Support Totals:				190		

Department Notes:

Creative Services

PERSONNEL

Position	Personnel Totals		Unit Square Ft.		Extended Sq. Feet	Equipment			Notes
	Current	Future	Office	Workstation		PC	Printer	Fax	
					0				
Team Manager	1	2	100		200	2	1		
					0				
Team Assistant	3	70		36	2520	1			
					0				
					0	2			
					0				
					0	2			
					0				
					0				
					0				
					0				
					0				
					0				
Personnel Totals:	4	72			2720	7	1	0	

Department Summary Information:

Personnel	2720 Square Ft.
Equipment	500 Square Ft.
Sub Total:	3220 Square Ft.
Circulation	1.54
Total Carpetable:	4958.8 Square Ft.

Interviewee:
 Interview Date: _____
 Revision Submitted: _____
 Sign Off: _____

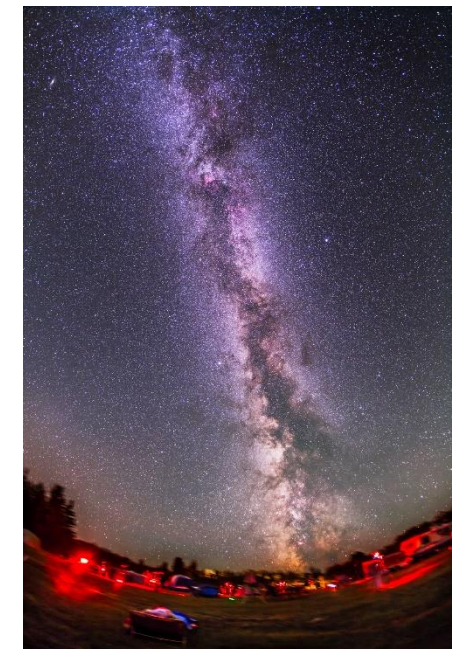
SUPPORT/EQUIPMENT SPACES

Space	Support/Equipment		Unit Square Feet	Extended Sq. Feet	Location	Notes
	Current	Future				
				0		
				0		
				0		
Concept Lounge	0	1	200	200		
				0		
Work Area	0	1	200	200	Adjacent to Teams	Work counters
				0		
Storage	0	1	100	100	Next to Work Area	Shelving
				0		
				0		
				0		
				0		
				0		
Support Totals:				500		

Department Notes:

CONCEPT STATEMENT

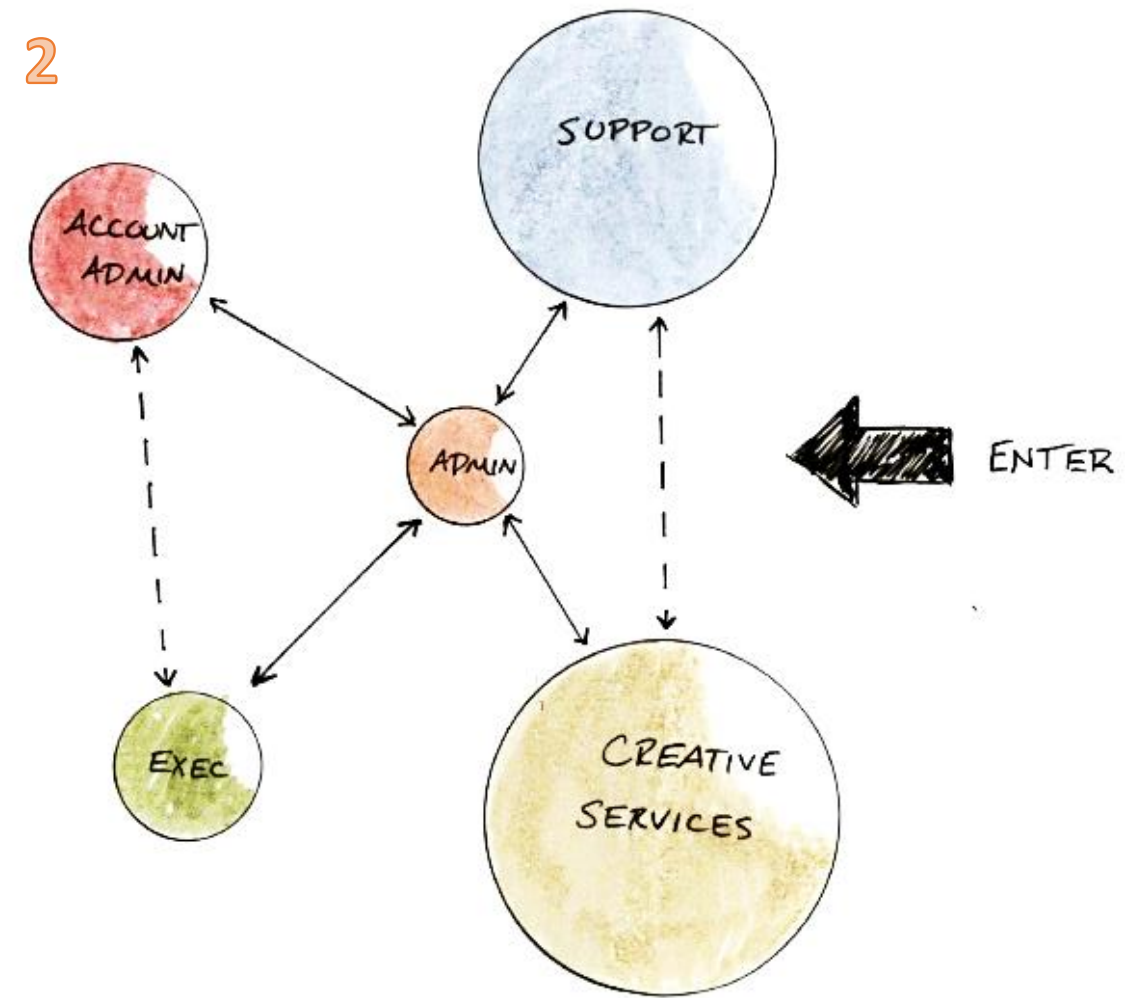
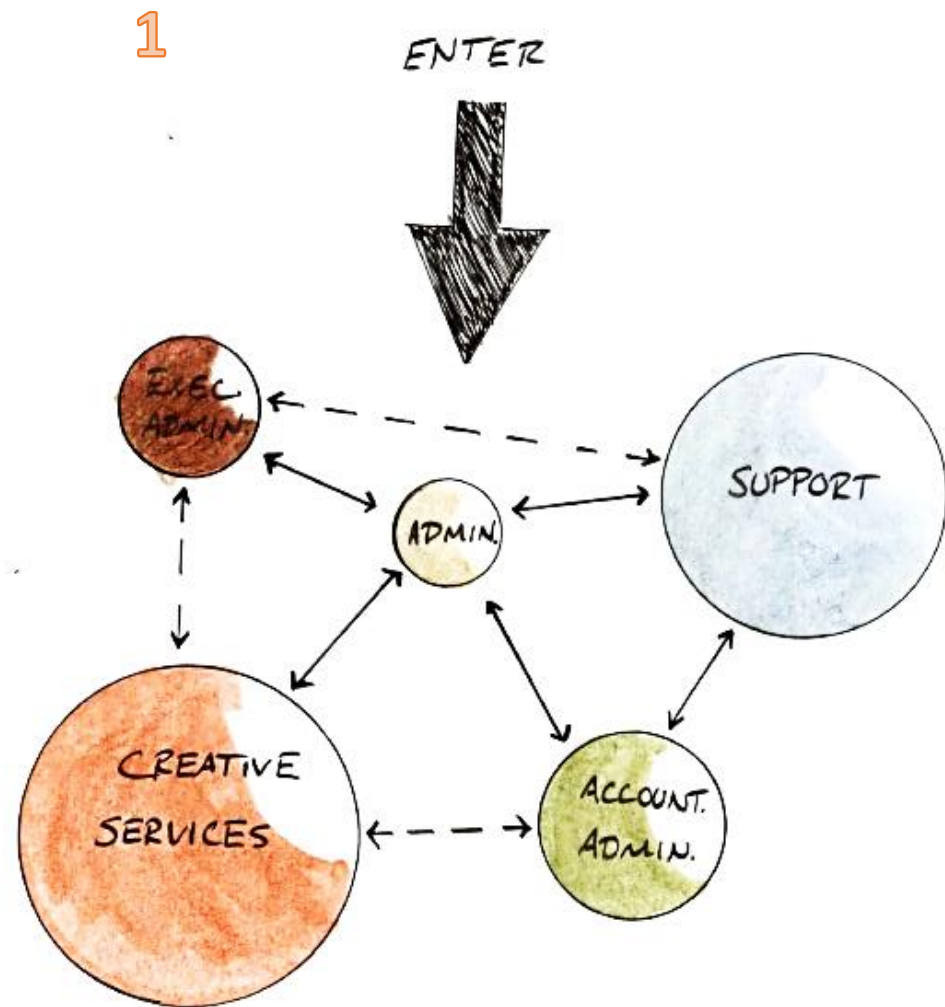
- Co-working and collaboration establishing could be implemented to establish a healthy work environment
- Incorporating movement the space to transform into an open atmosphere
- Employees interact with each other and their boss





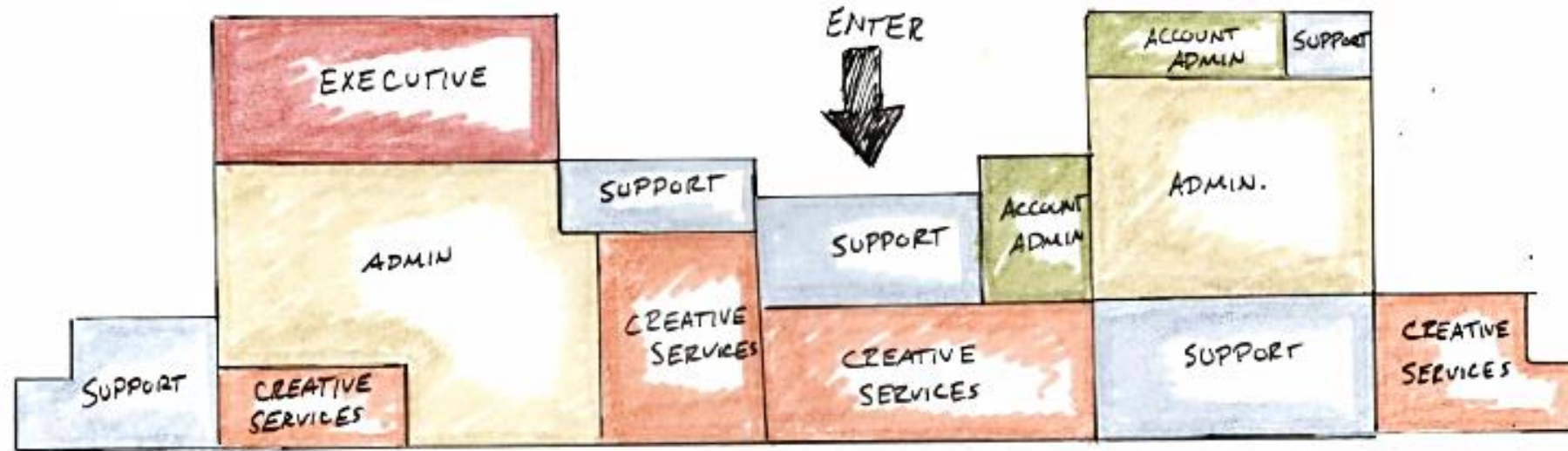
PORTFOLIO 2

BUBBLE DIAGRAMS

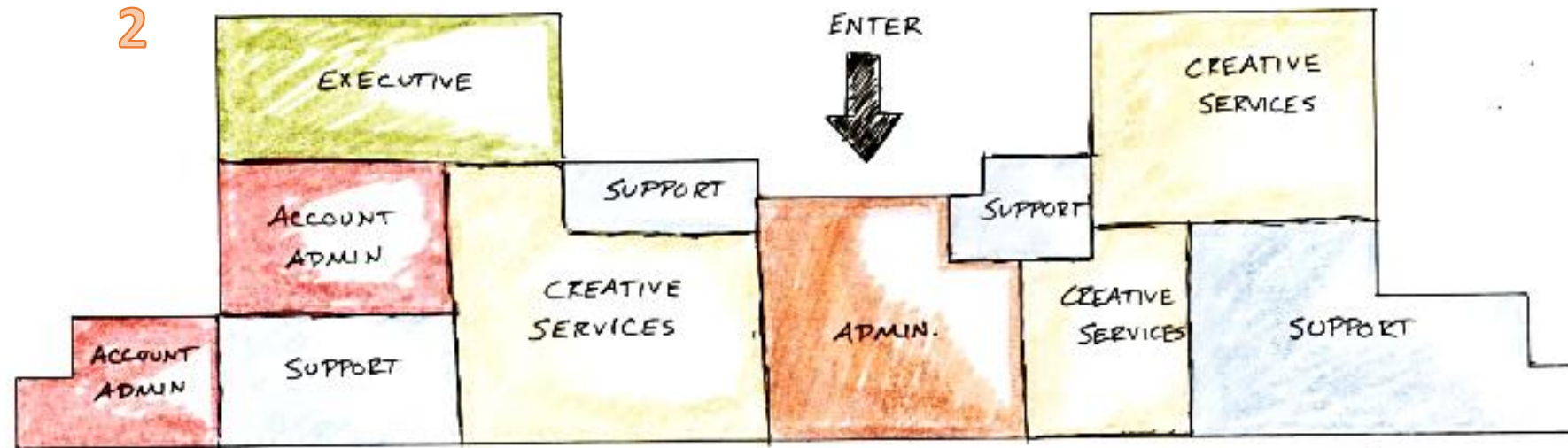


BLOCKING DIAGRAMS

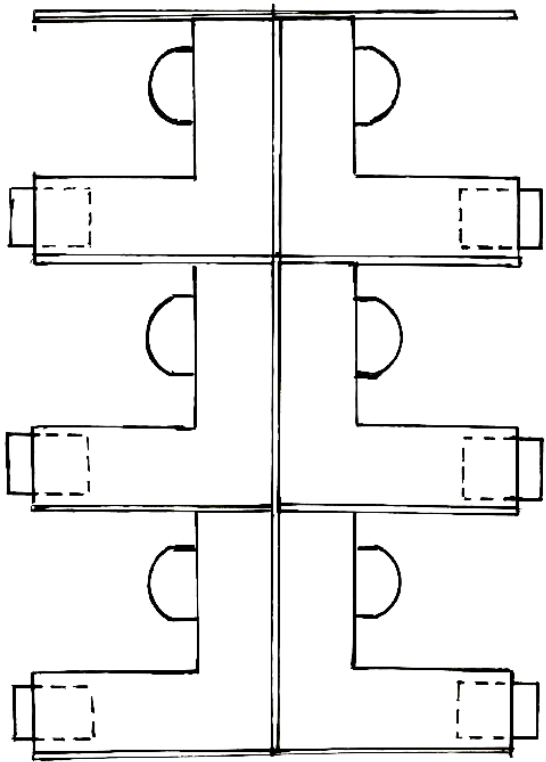
1



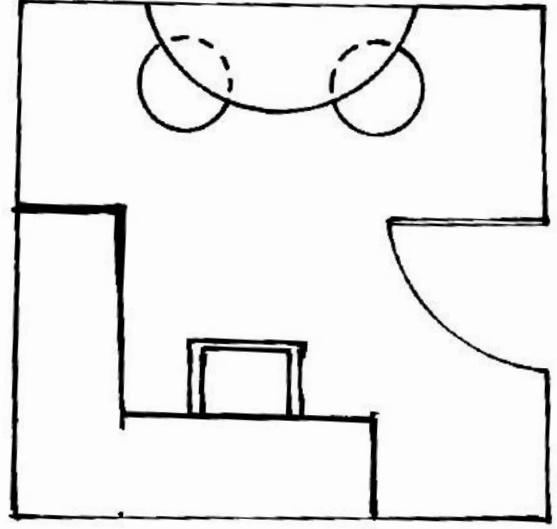
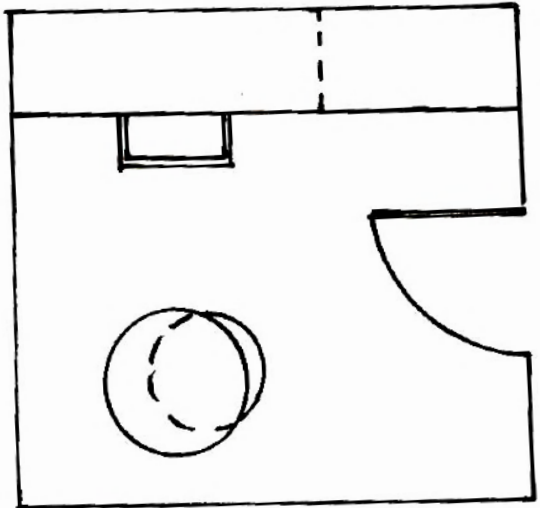
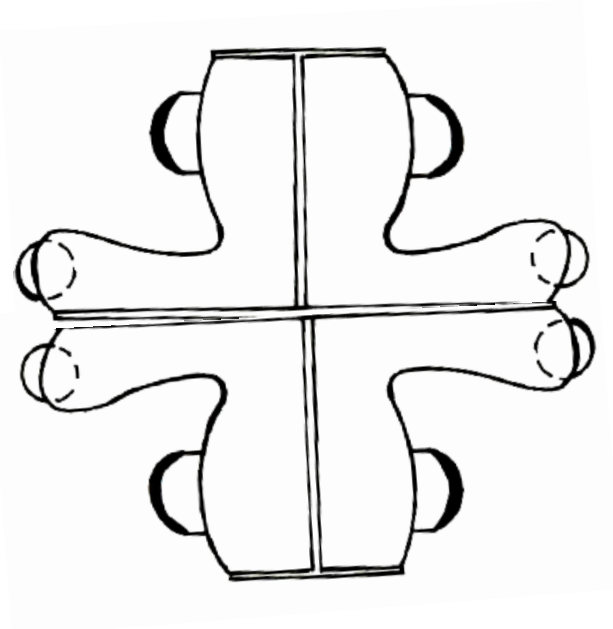
2



SPACE STANDARD DRAWINGS

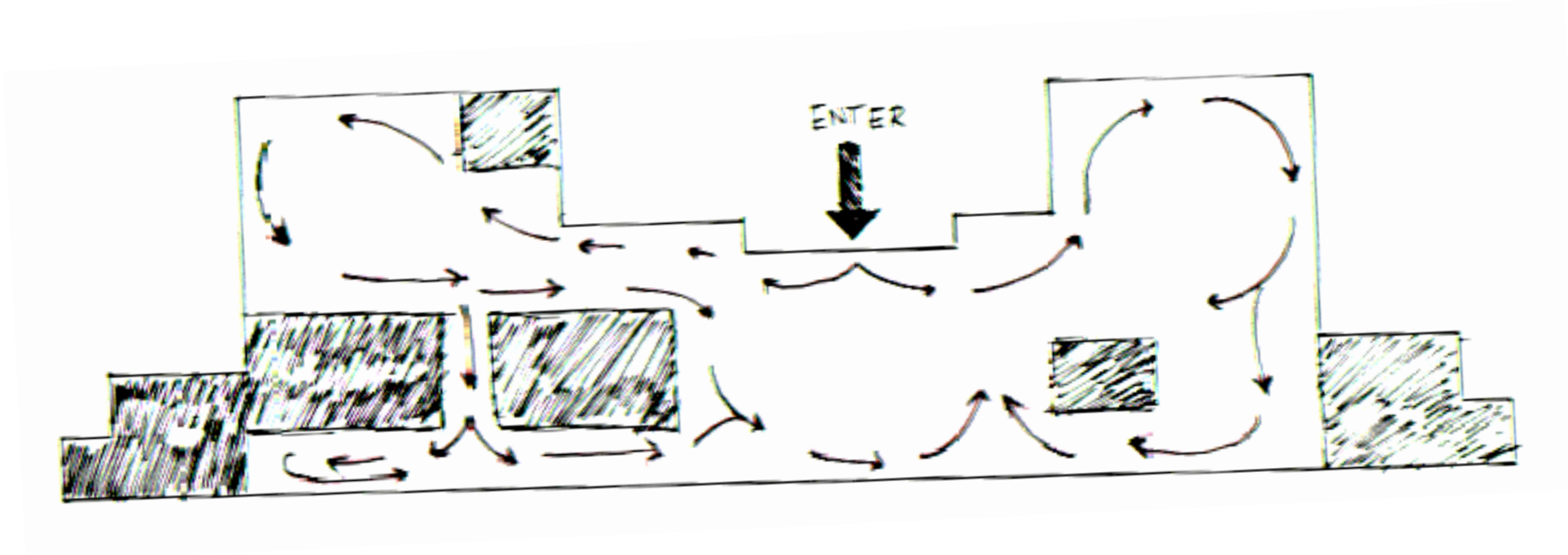
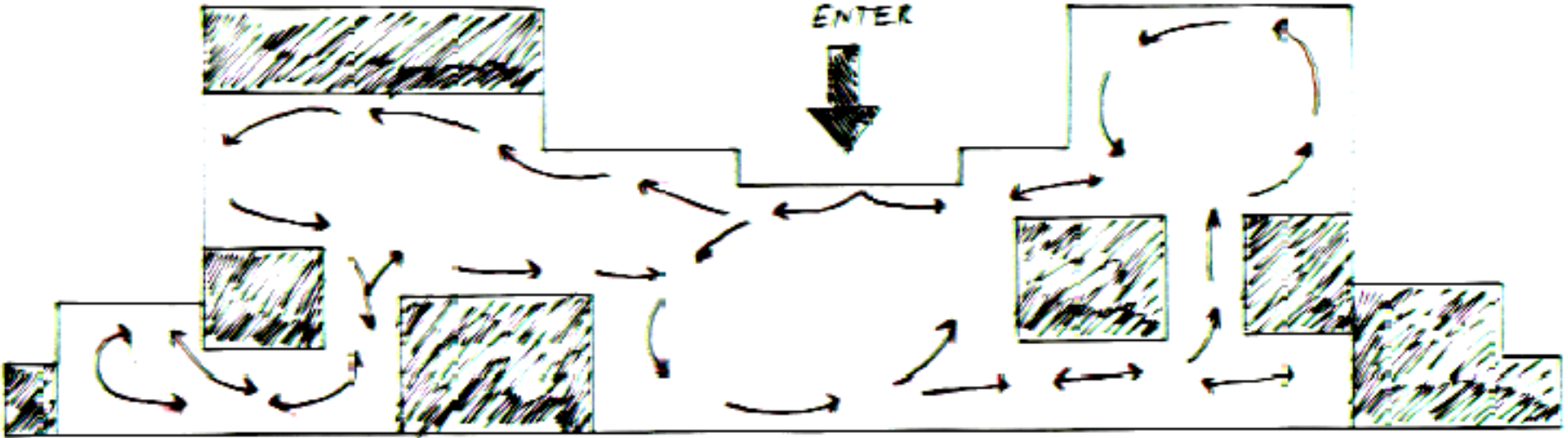


WORK STATIONS



LARGE OFFICE

SPATIAL CONCEPT SKETCHES



GOOGLE EARTH

WEST



NORTH

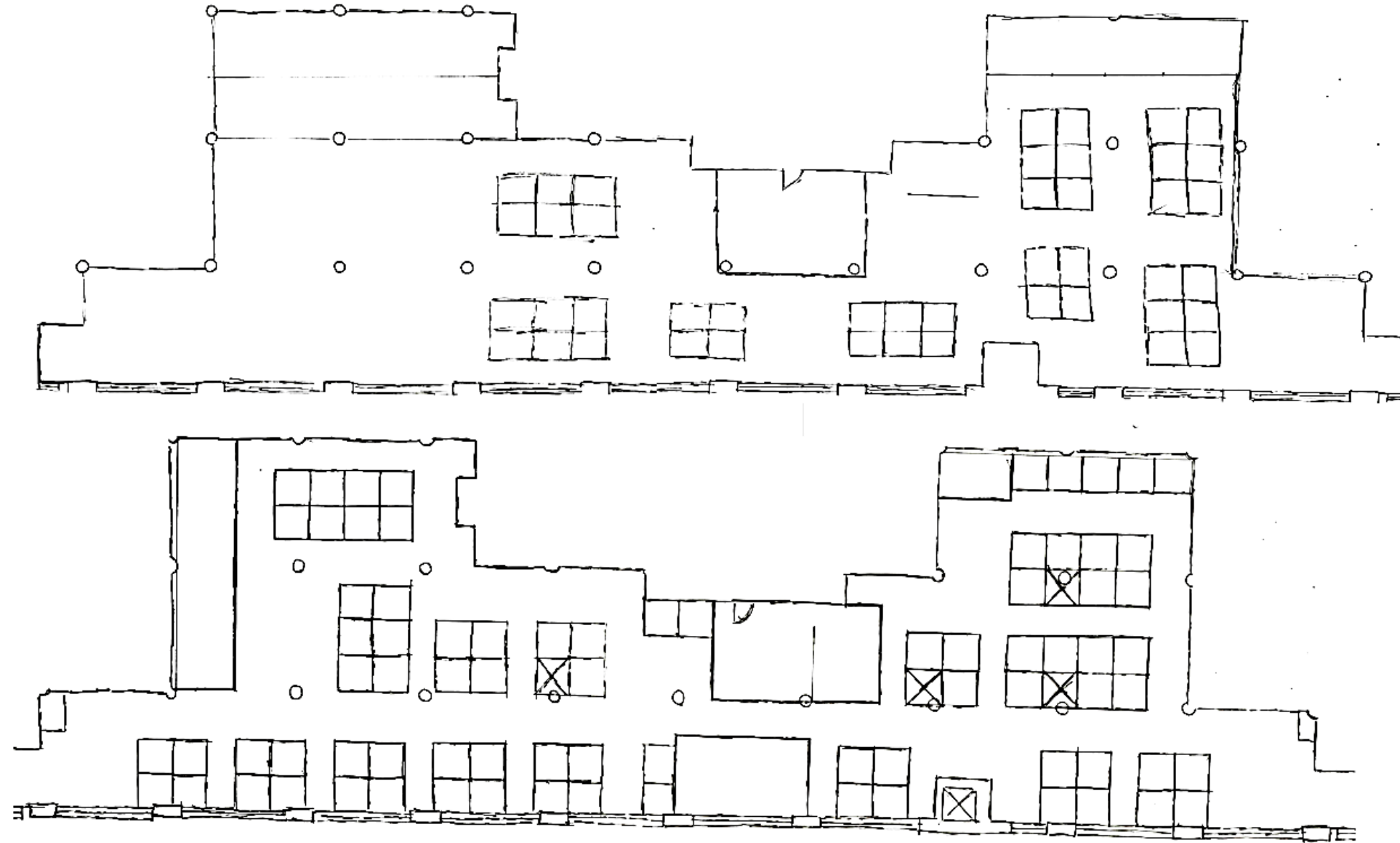


SOUTH

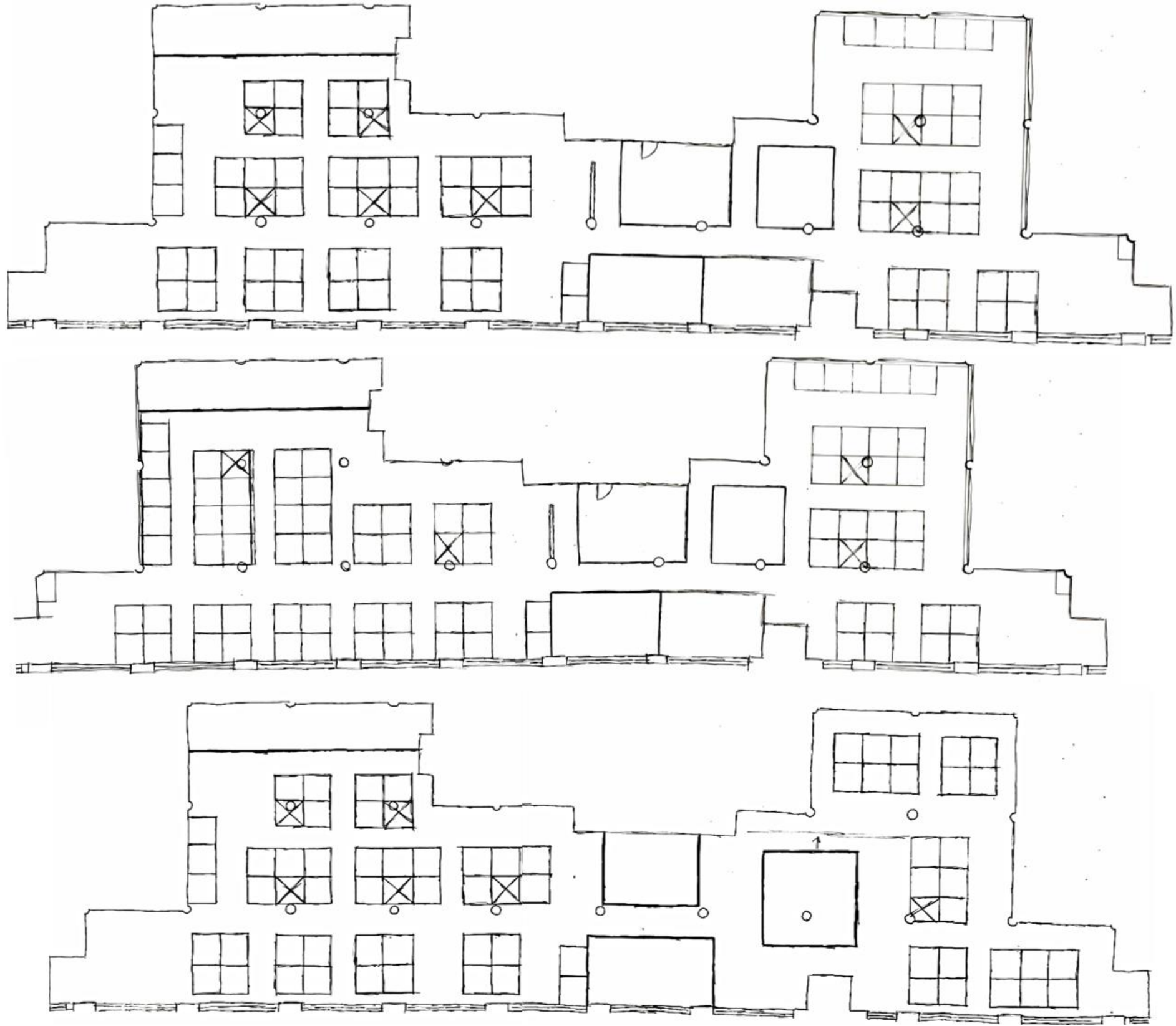


EAST

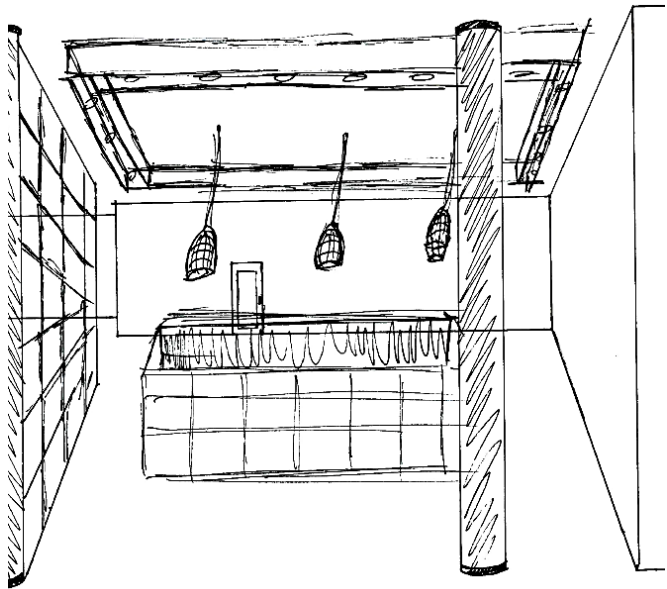
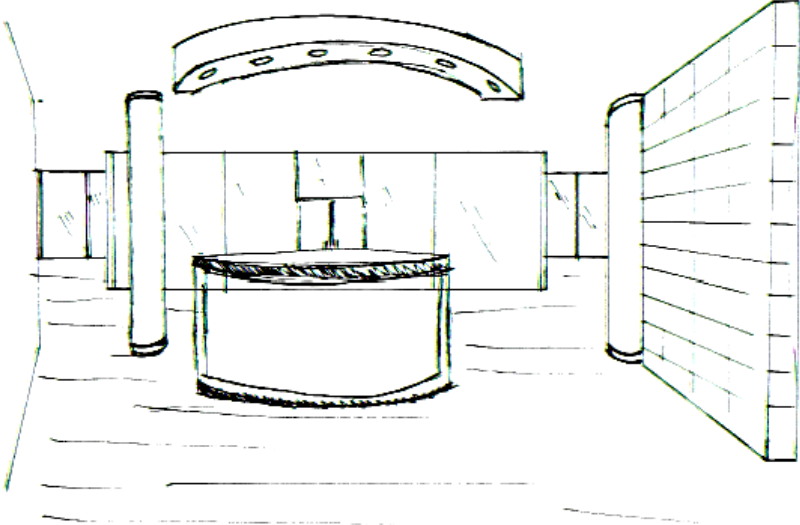
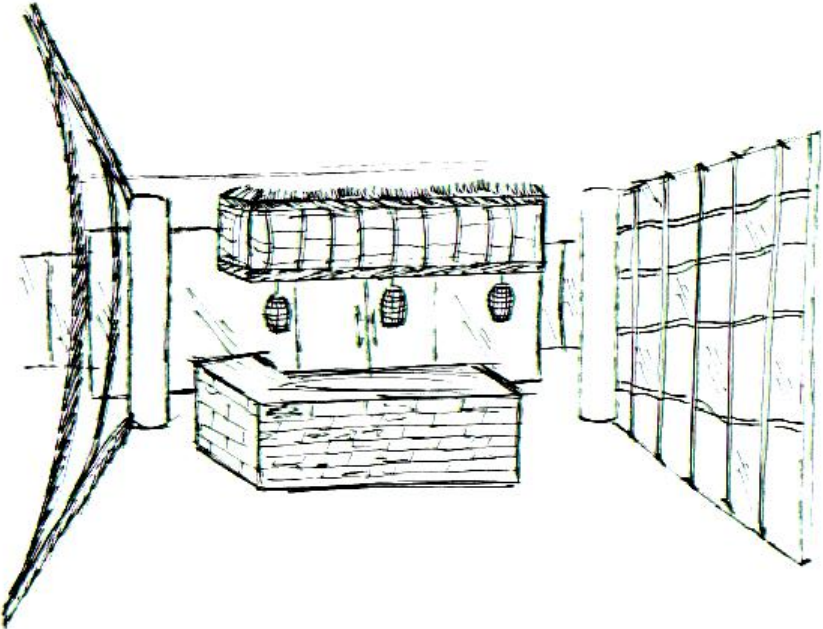
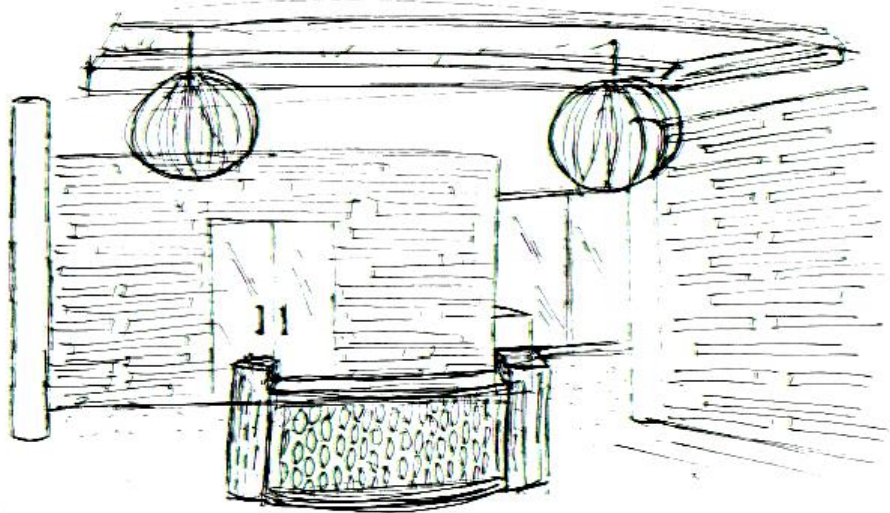
SPACE PLAN SKETCHES



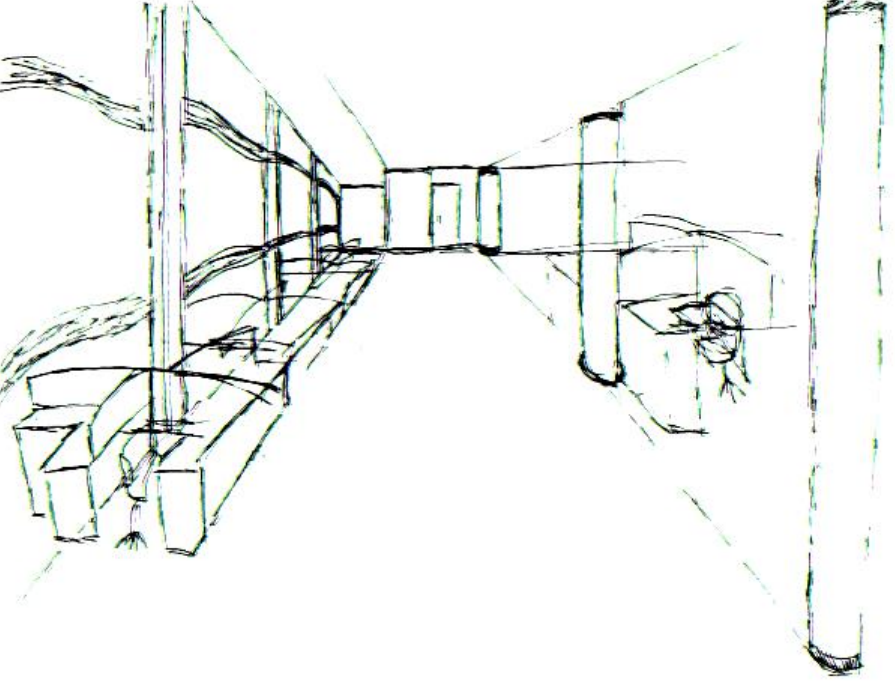
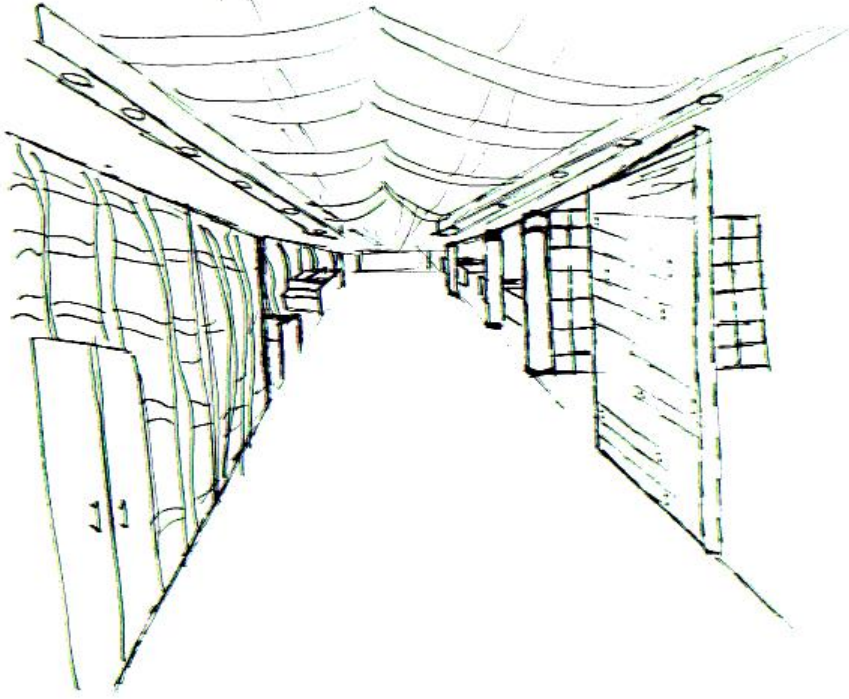
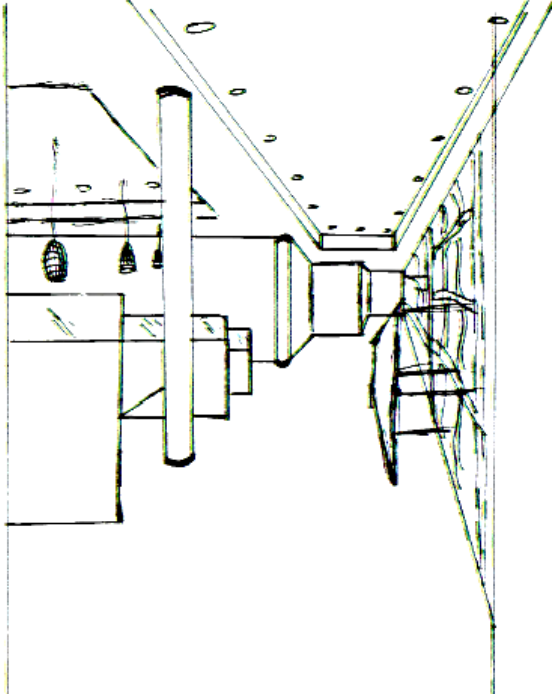
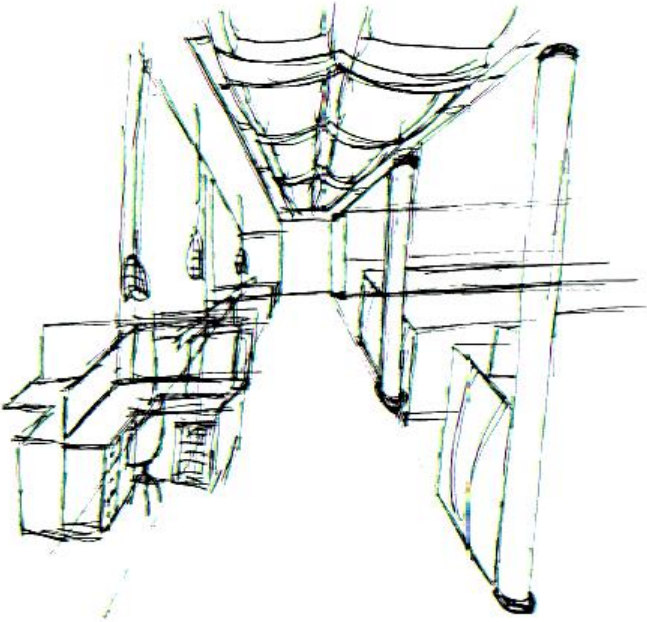
SPACE PLAN SKETCHES



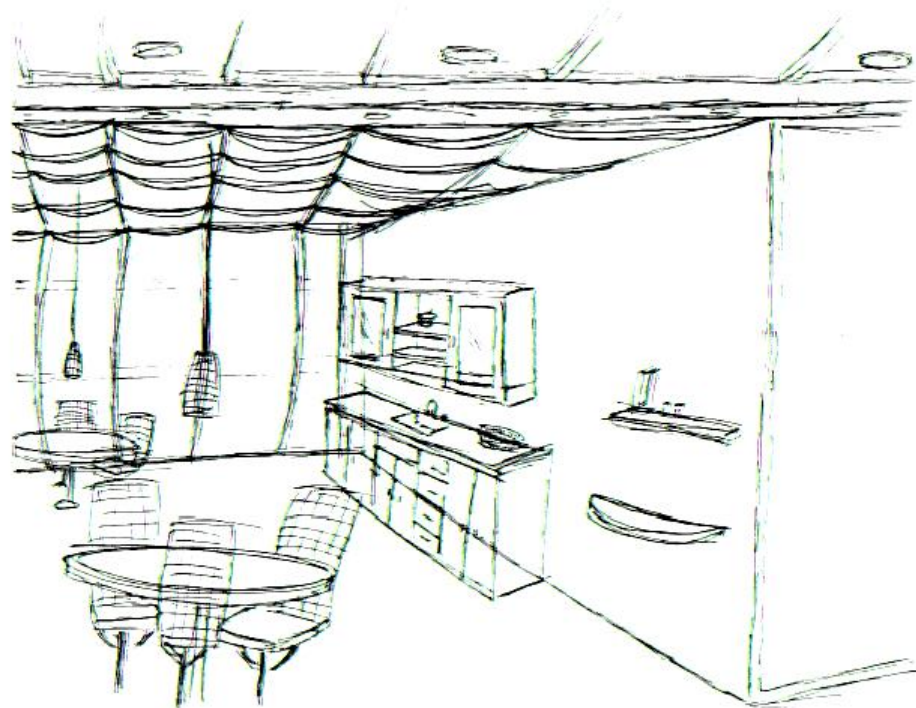
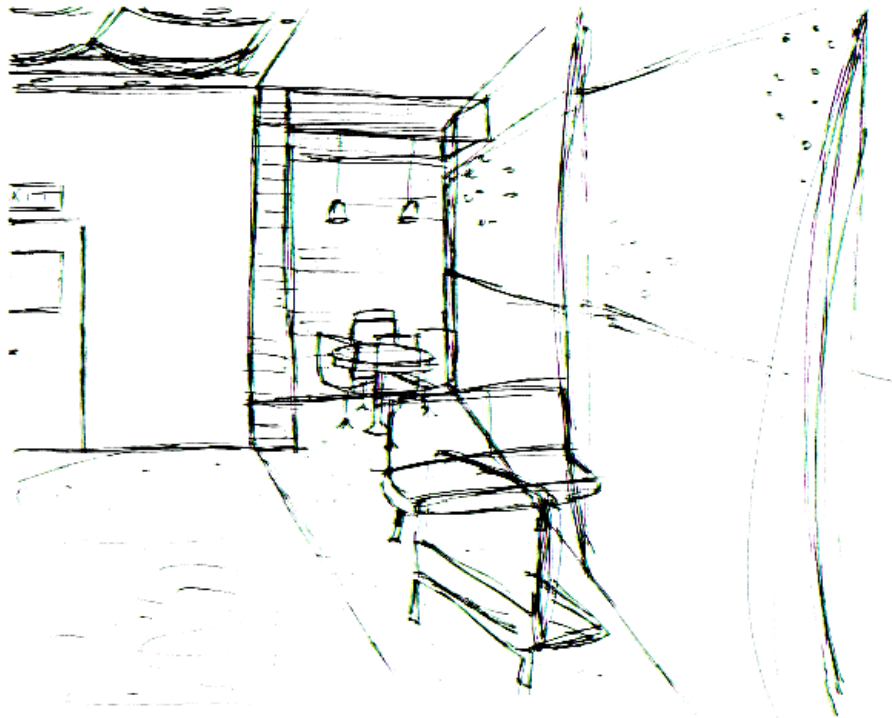
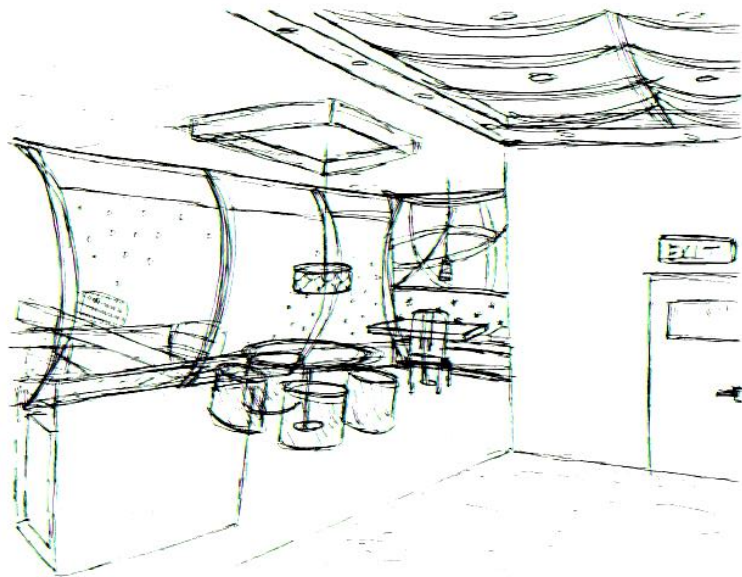
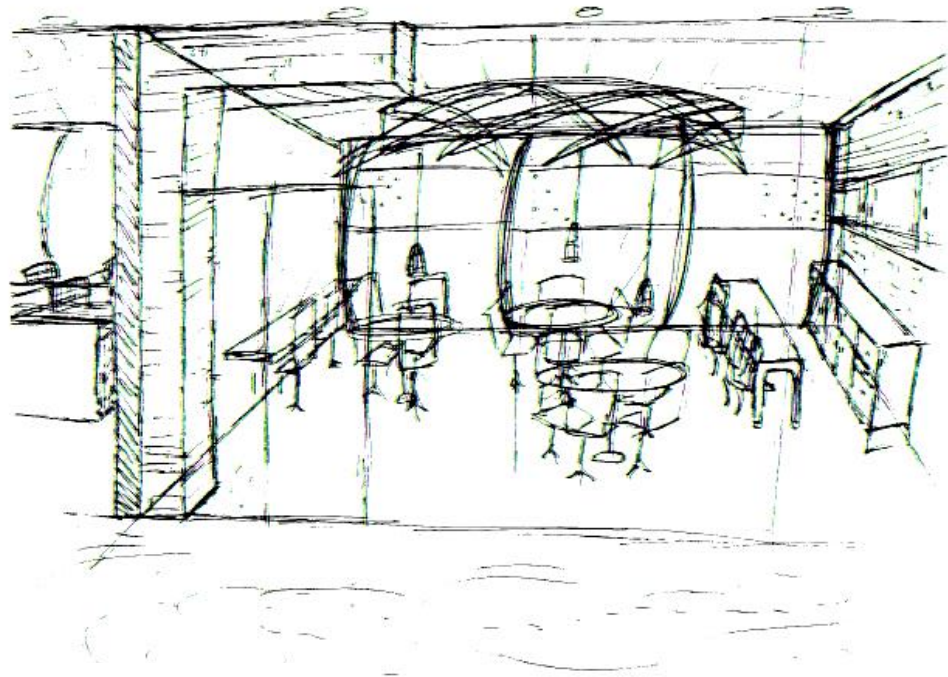
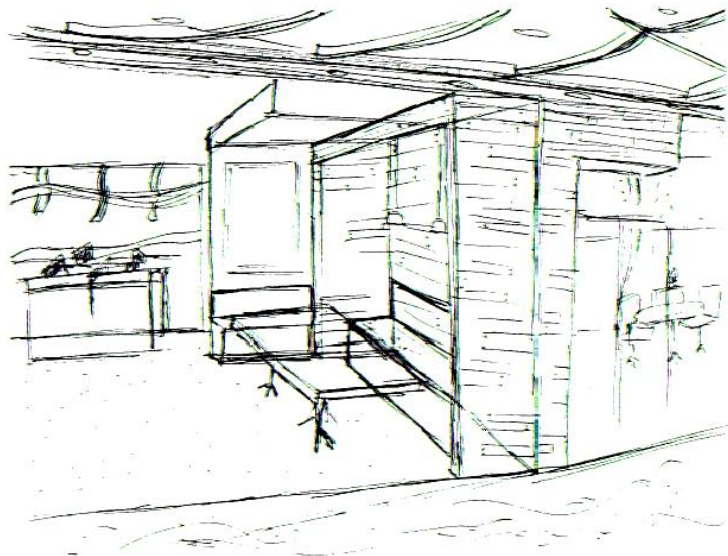
ENTRY SKETCHES



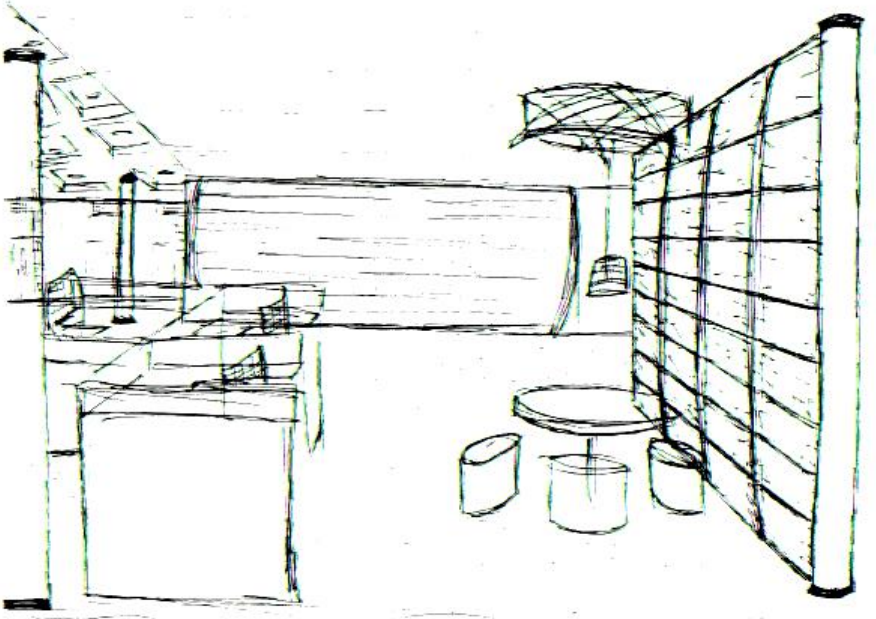
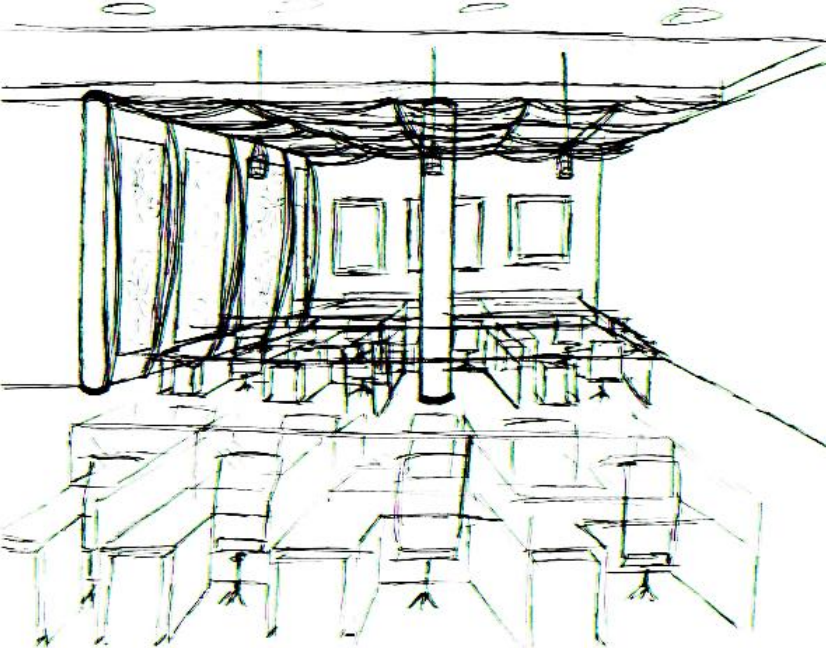
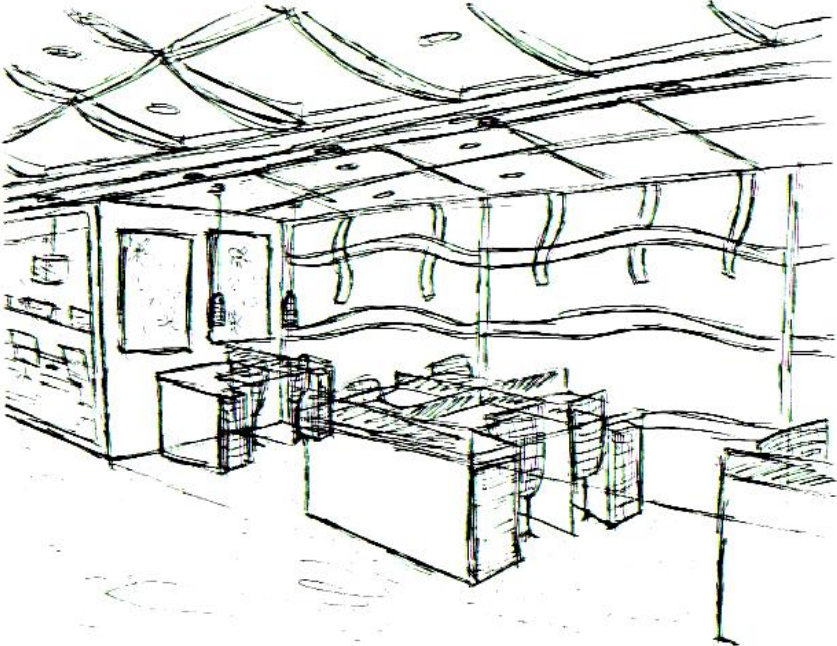
MAIN CORRIDOR SKETCHES



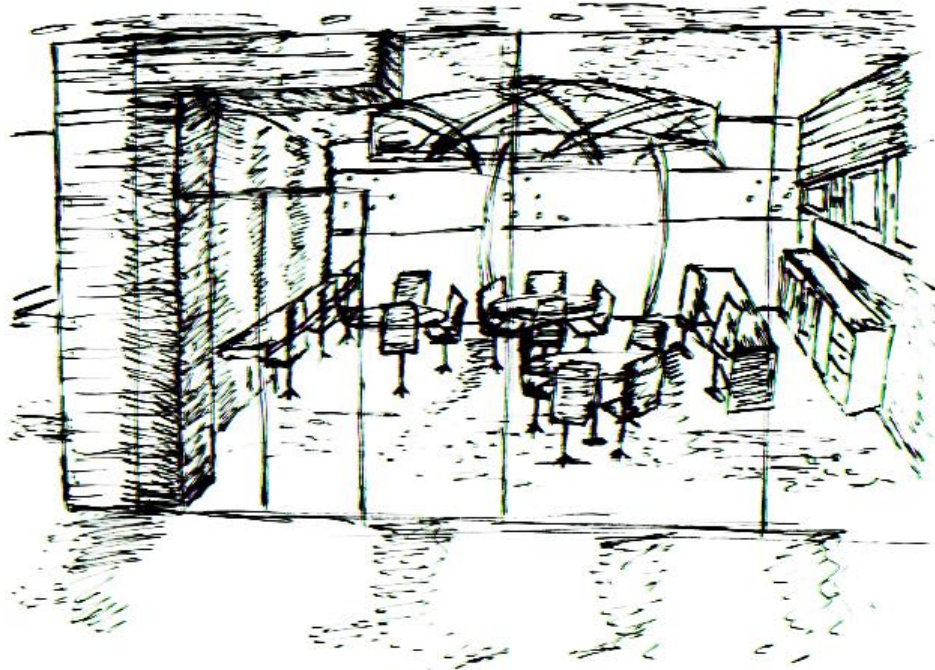
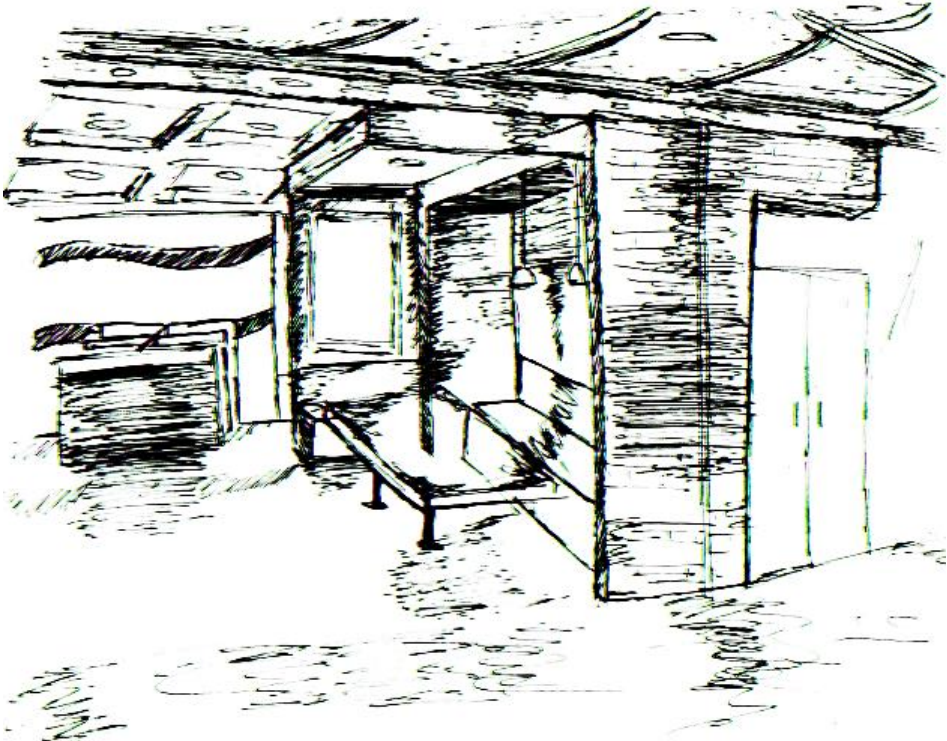
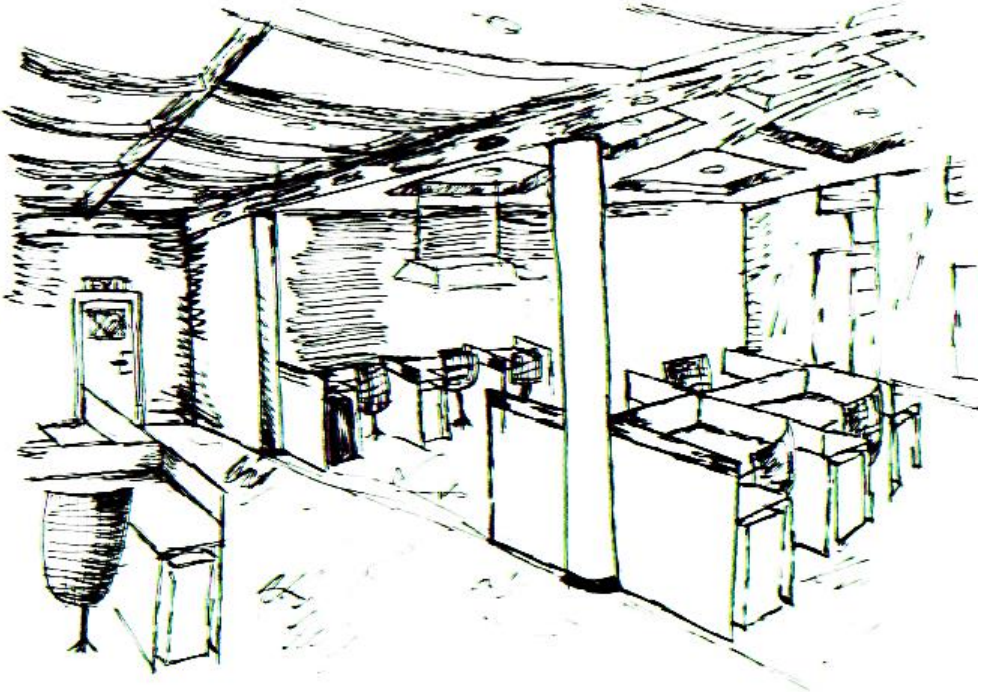
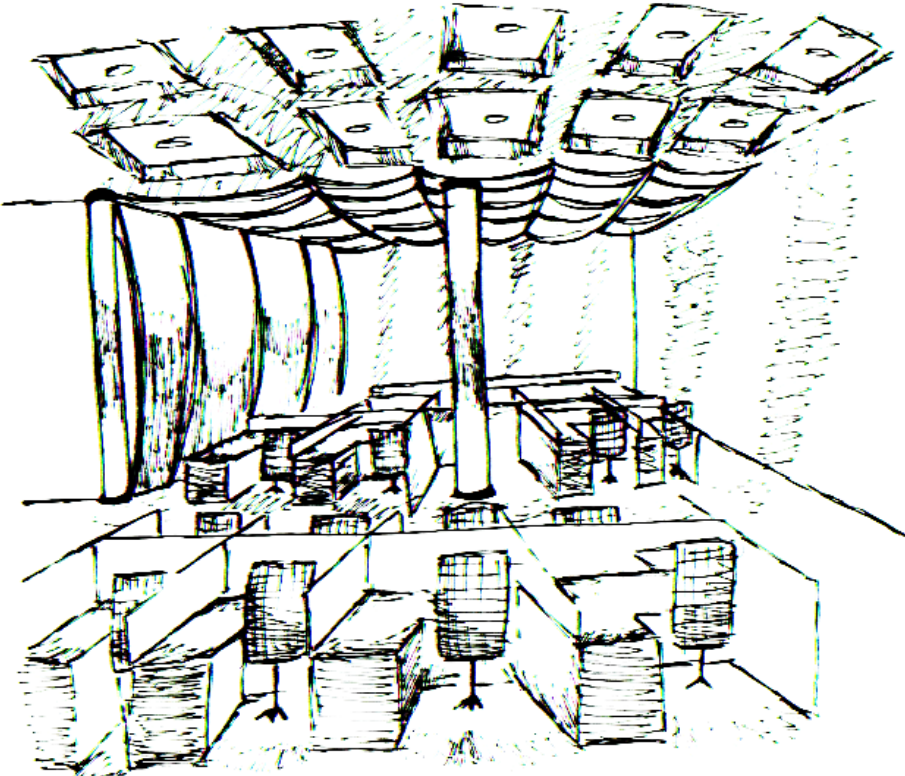
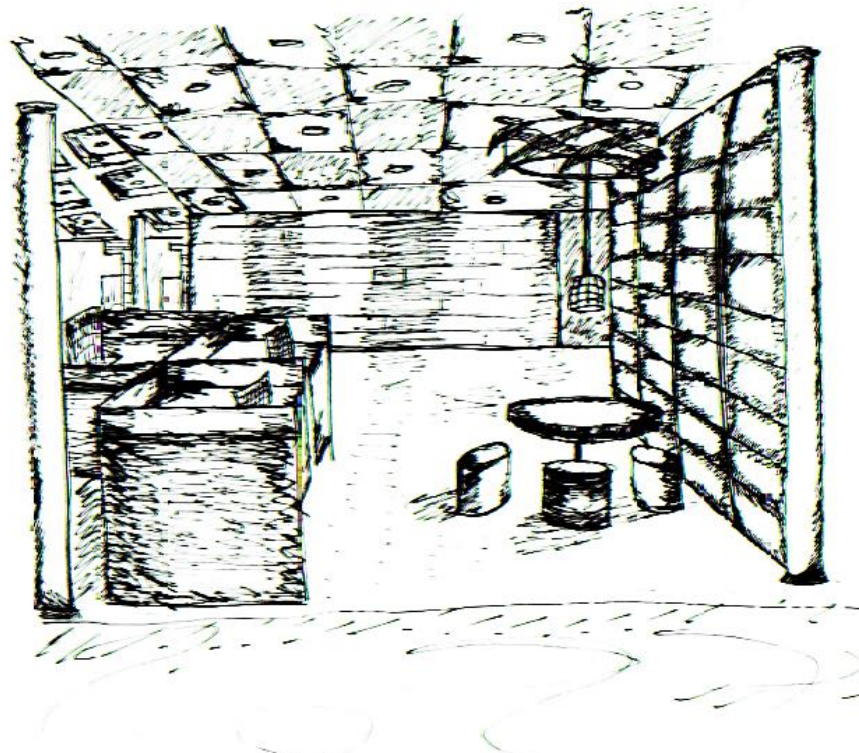
LOUNGE SKETCHES



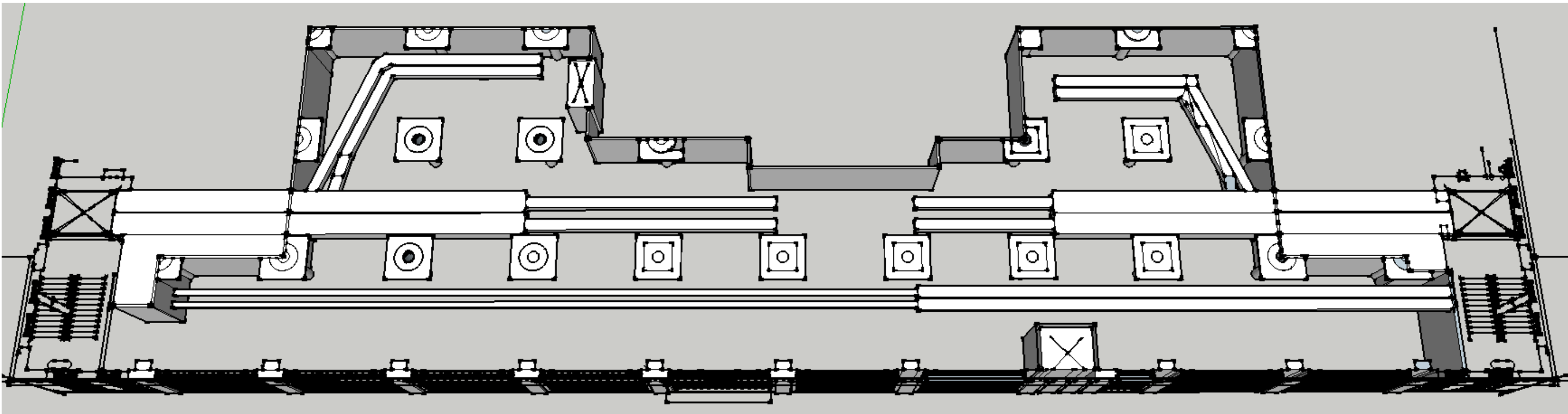
OPEN WORK AREA SKETCHES



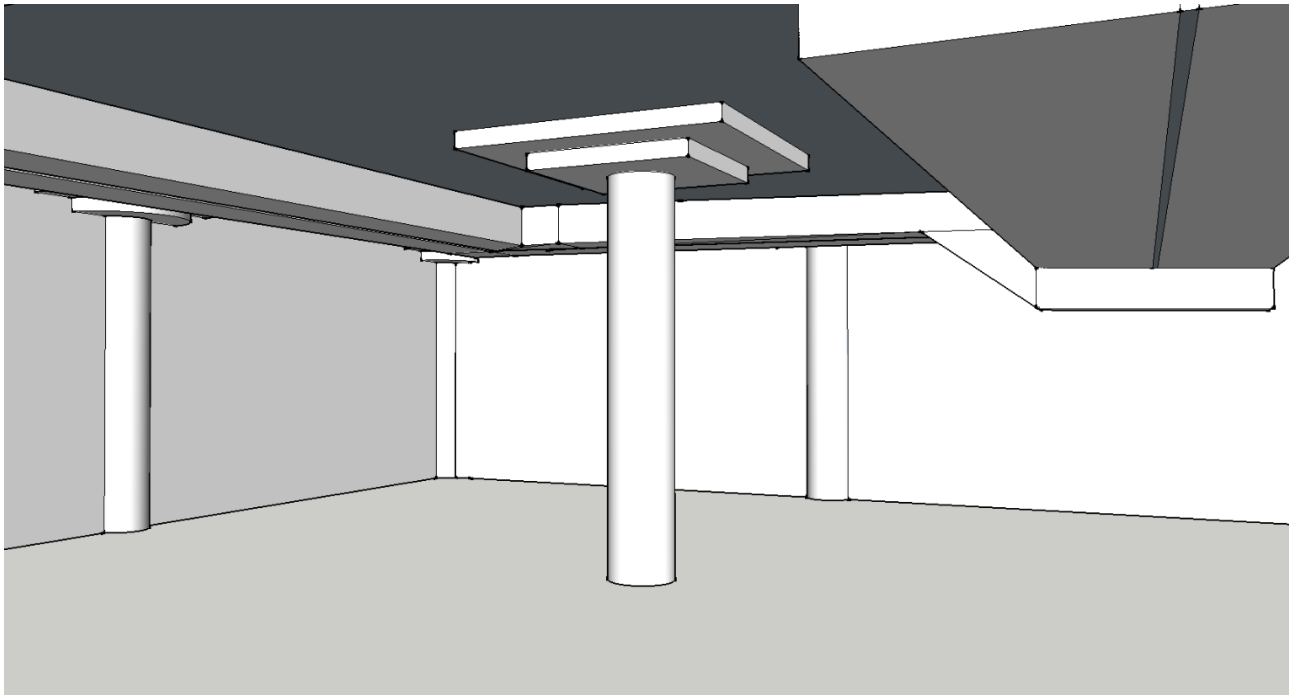
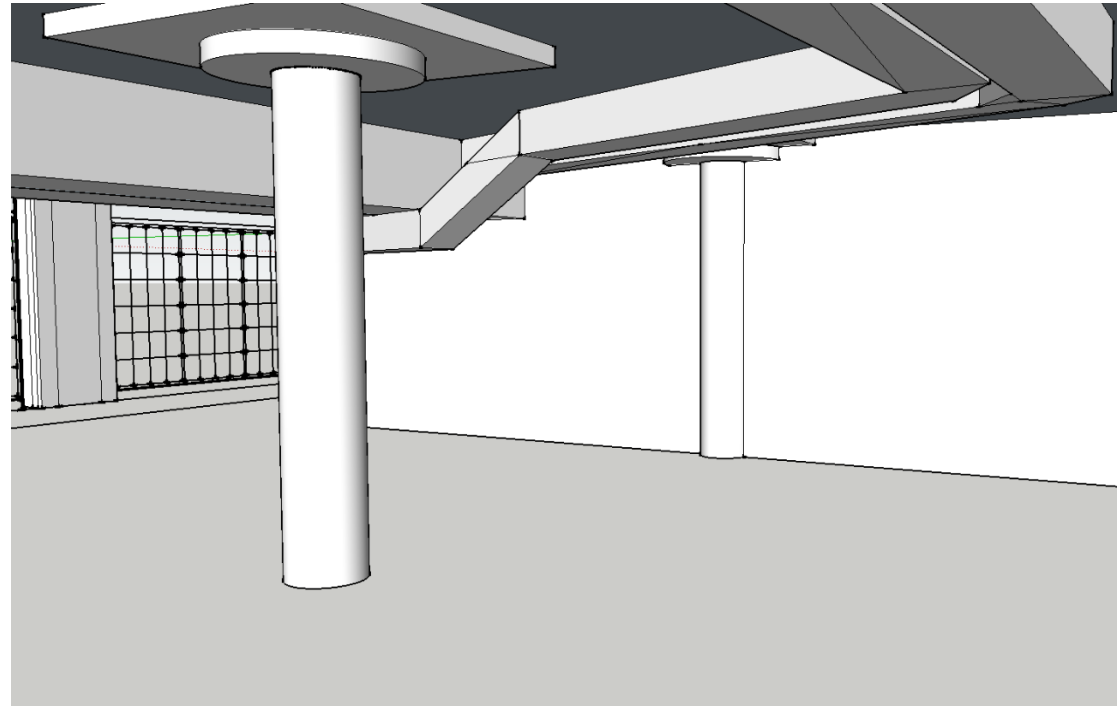
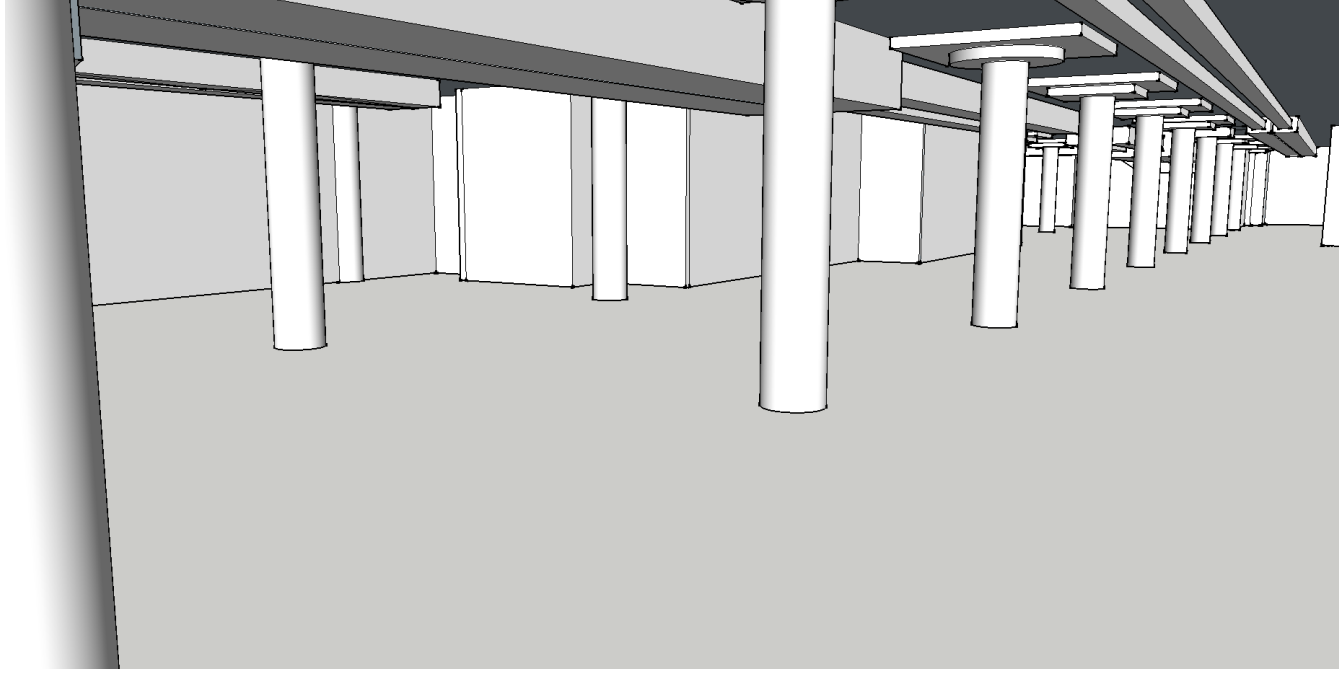
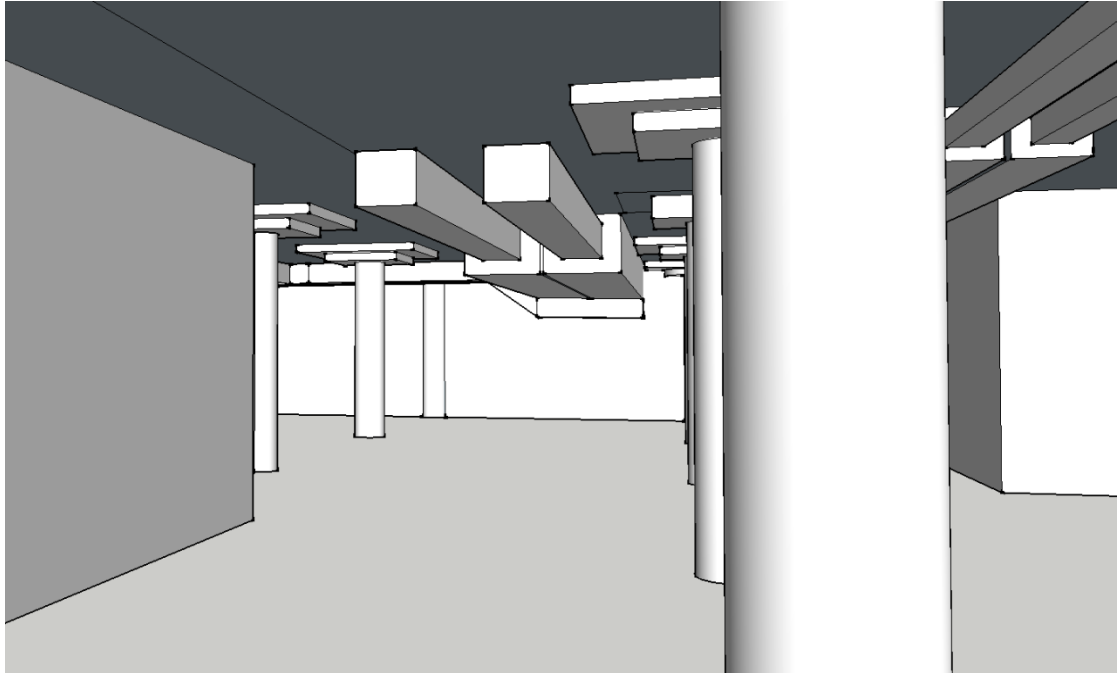
LIGHT SKETCHES



SYSTEMS RCP



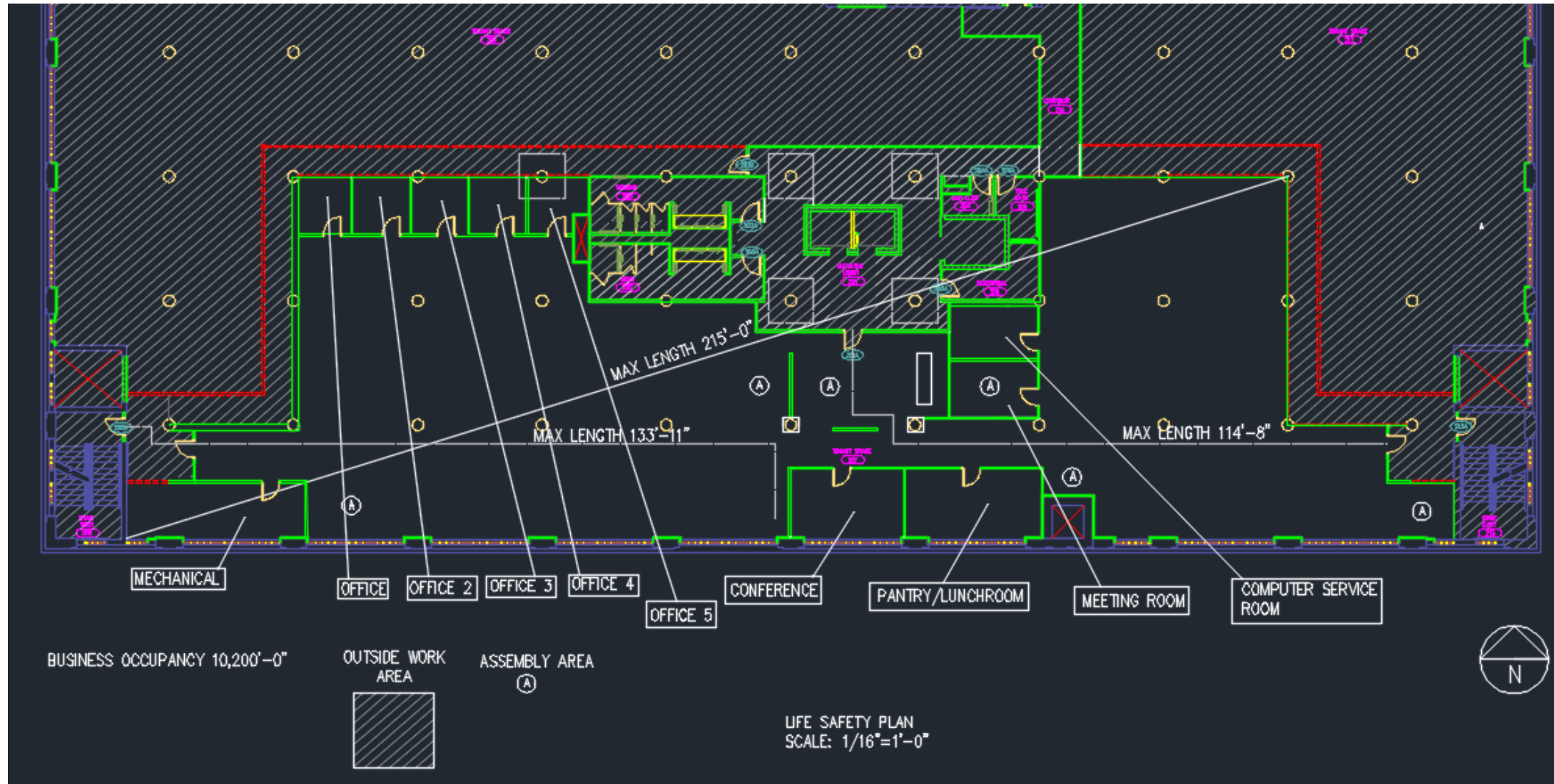
SYSTEMS RCP VIEWS



LIGHTING MODEL



AUTO CAD LIFE SAFETY PLAN



Exit Requirements: Number and Arrangement of Exits

Space Designation	# of Exits		Travel Distance		Arrangement: Means of Egress				
	Required	Shown on Plans	Allowable Distance	Actual Distance Shown on Plans	Req'd Distance Between Exits	Actual Distance Shown on Plans			
Suit 3100	2	3	300ft	214'	107'	114'-8"			
Notes:									
Use Group or Space Designation	(A)	(B)	Calculated Occupant Load = A/B	©		Exit Width (Inches)			
	Area = Sq. Ft.	Area per Occupant		Egress per Occupant		Required Width = (A/B)xC		Actual Width	
				Stair	Level	Stair	Level	Stair	Level
Suit 3100	10,200	100	102	.3"	.2"	30.6"	20.4"	5'-7 1/2"	5'-0"

LIGHTING ANALYSIS

$$\text{MAINTAINED FC} = \frac{(\text{NUMBER OF LAMPS}) \times (\text{INITIAL LAMPS LUMENS}) \times \text{LLF} \times \text{CU}}{\text{AREA}}$$

$$\text{RCR} = (\text{ROOM CAPITIVITY RATIO}) = 11$$

$$\frac{5(11) \times (10+10)}{100}$$

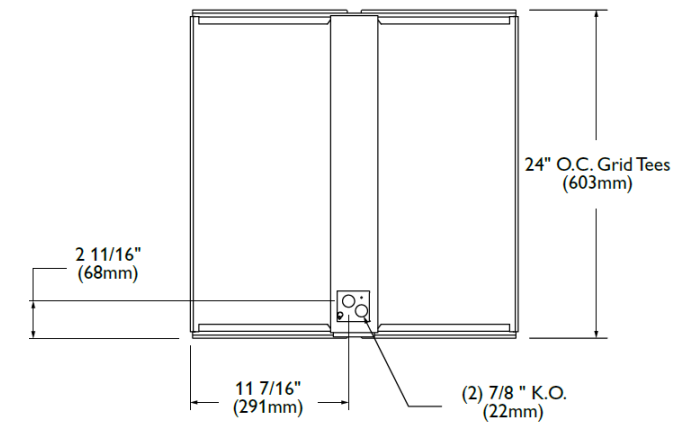
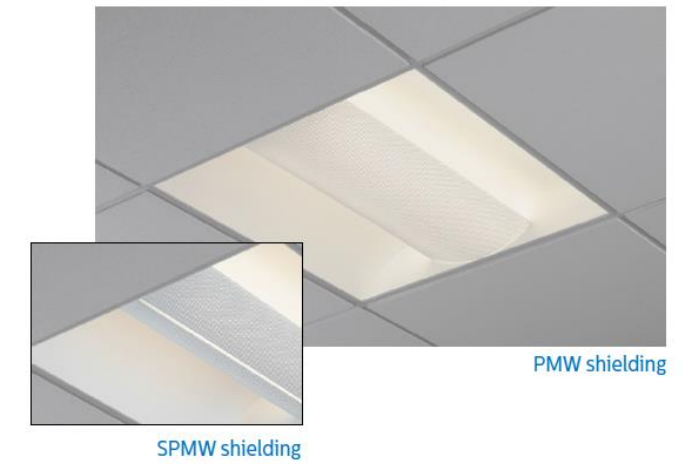
100

$$\text{MAINTAINED FC} = 81$$

$$\frac{4 \times 3150 \times .9 \times .72}{100}$$

100

LLF = .9



LIGHTING ANALYSIS

Width	Family	Ceiling Type	No. of Lamps (not included)	Lamp Type	Shielding	Voltage	Options
2	AVE	G	2				
2 2'	AVE Arioso recessed shallow perf	G Grid	2	14 14WTT5 (22") 24HO 24WTT5HO (22") CF40 40WTT5 (24") CF50 50WTT5 (24") CF55 55WTT5 (24")	PMW Perforated metal w/ white overlay SPMW 2-piece perforated metal with white overlay ACR White opal acrylic diffuser	120 277 347 UNV Universal Voltage 120-277V	1/2 One 2-lamp ballast EB Electronic ballast, <10% THD, std. ballast factor EB101 CF40 electronic ballast, instant start, <10% THD EBD7 Advance Mark 7 dimming ballast, 0-10V (low voltage) control EBDX Advance Mark 10 dimming ballast, phase control EBD Electronic dimming ballast, customer specified E5 B50 emerg. ballast, U.S. or Canada market, CF, 1100-1400 lumens, UNV E7LP LP550 emerg. ballast T5/T5HO, 430-700 lumens, 120/277V E6LP LP600 emerg. ballast U.S. or Canada market, T5/T5HO, 750-1325 lumens, 120/277V F1 3/8" flex 3 wire, 18 gauge 6' F2 3/8" flex 4 wire, 18 gauge 6' F2/5W 3/8" flex, 5 wire 18 gauge 6' GLR Fusing, fast blow LPT830 Installed T5/T5HO/CF lamps, 80+ CRI, 3000K LPT835 Installed T5/T5HO/CF lamps, 80+ CRI, 3500K LPT841 Installed T5/T5HO/CF lamps, 80+ CRI, 4100K CHIC Chicago plenum rated

Arioso recessed shallow perf (PMW) 2x2 2 lamp CF40

Efficiency – 59.1%

LER – 47

TER – 40

Catalog No.	2AVEG2CF40-PMW-1/2-EB	Candlepower				Light Distribution				Average Luminance				
		Angle	End	45°	Cross	Degrees	Lumens	% Lamp	% Luminaire	Angle	End	45°	Cross	
Test No.	27591	0	1280	1280	1280	0-30	996	15.8	26.8	45	3014	3303	3573	
S/MH	1.3	5	1278	1272	1268	0-40	1635	25.9	43.9	55	2702	3261	3730	
Lamp Type	40WTT5	10	1257	1255	1256	0-60	2920	46.3	78.5	65	2254	3254	3884	
Lumens/Lamp	3150	15	1223	1228	1236	0-90	3721	59.1	100.0	75	1840	2974	2495	
Ballast Factor	.88	20	1178	1191	1204					85	1297	1204	1297	
Input Watts	70	25	1124	1144	1166	Coefficients of Utilization								
Comparative yearly lighting energy cost per 1000 lumens – \$5.11 based on 3000 hrs. and \$.08 pwr KWH. The photometric results were obtained in the Philips Day-Brite laboratory which is NVLAP accredited by the National Institute of Standards and Technology.		30	1057	1086	1121	EFFECTIVE FLOOR CAVITY REFLECTANCE 20 PER (pfc=0.20)								
		35	977	1022	1065	pcc	80		70		50			
		40	891	947	1006	pw	70	50	30	70	50	30	50	30
		45	792	868	939	RCR								
		50	689	784	869	0	69	69	69	68	68	68	66	66
		55	576	695	795	1	64	60	58	63	59	57	57	56
		60	459	605	715	2	57	53	48	56	52	48	50	46
		65	354	511	610	3	53	46	41	52	46	40	44	40
		70	259	411	463	4	48	40	35	46	40	35	39	34
		75	177	286	240	5	45	36	32	42	35	30	34	30
		80	102	112	114	6	40	33	28	40	33	28	32	27
85	42	39	42	7	38	29	25	36	29	25	28	23		
				8	34	27	22	34	27	22	26	22		
				9	33	25	20	32	25	20	23	20		
				10	30	23	17	29	23	17	22	17		