
Rachel DiGiovanni
Portfolio 3
IDSN Systems 3600
Fall 2015



An earthy, organic atmosphere of productivity. By incorporating natural elements such as bamboo plants as well as natural wood ceiling tiles, we are bringing the outside in. Through our mission to promote circulation in the workplace, consciously placed sitting and standing work stations will be installed throughout the space, providing flexibility.

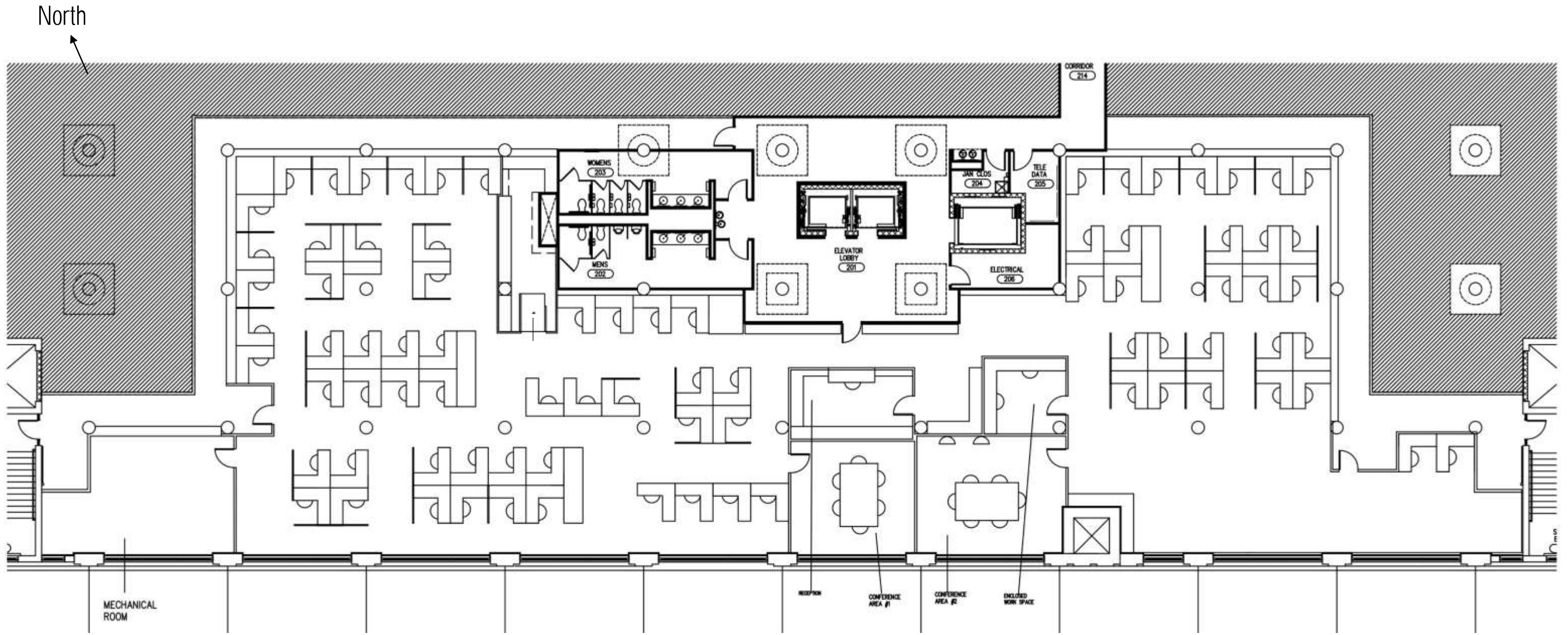
Inspiration



Statement of Sustainability Strategies

- Embodied energy*
- Recycled wood*
- Use of solar and energy efficient light bulbs*
- Motion detecting switches in less used areas*
- Installation of desk side recycling*
- Optimization of natural daylight*





Furniture Plan: 1/16" = 1'-0"

North

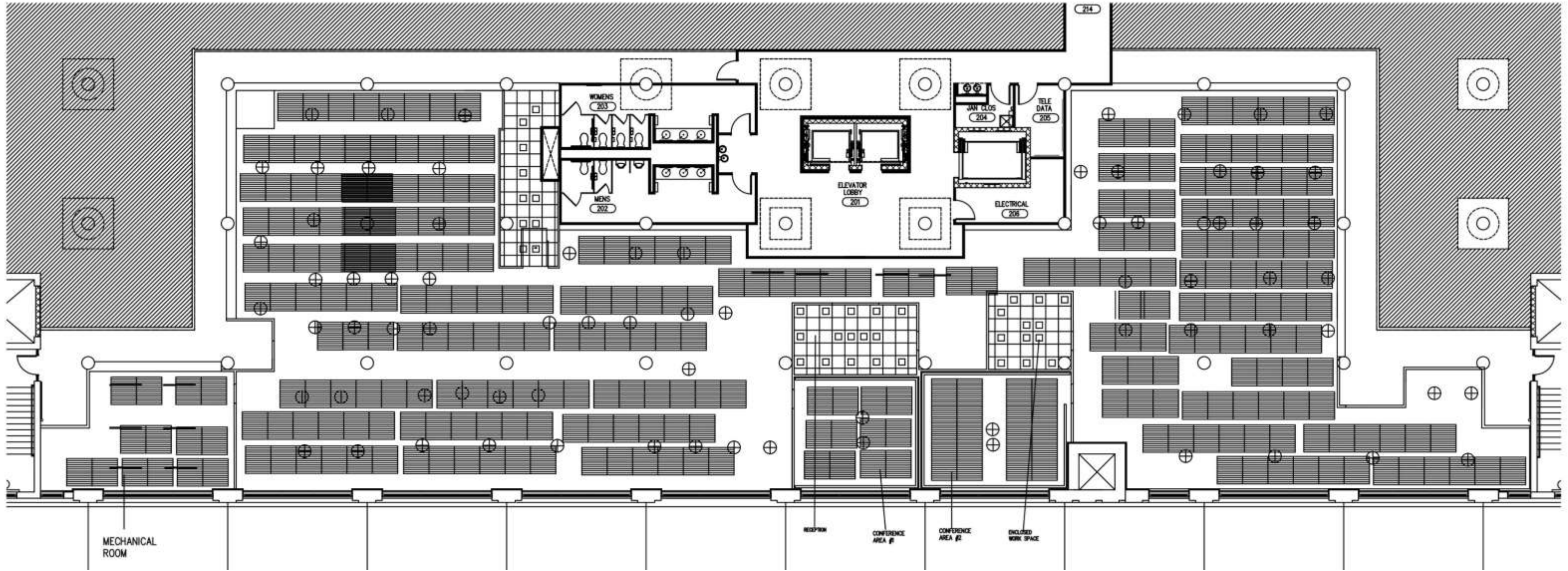
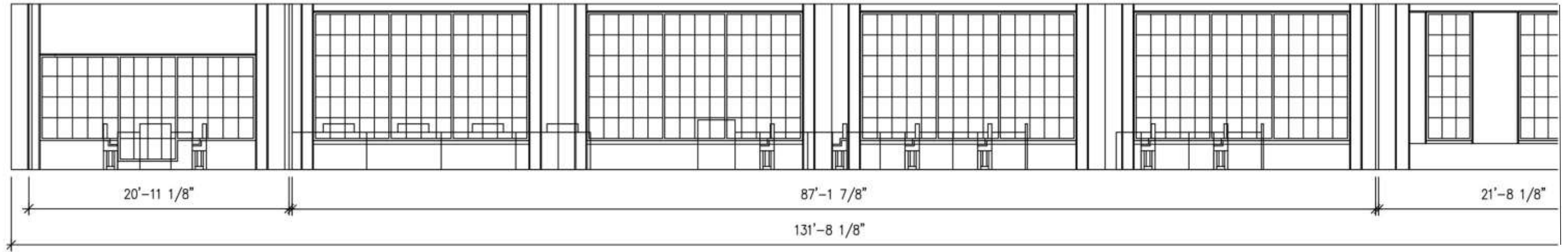
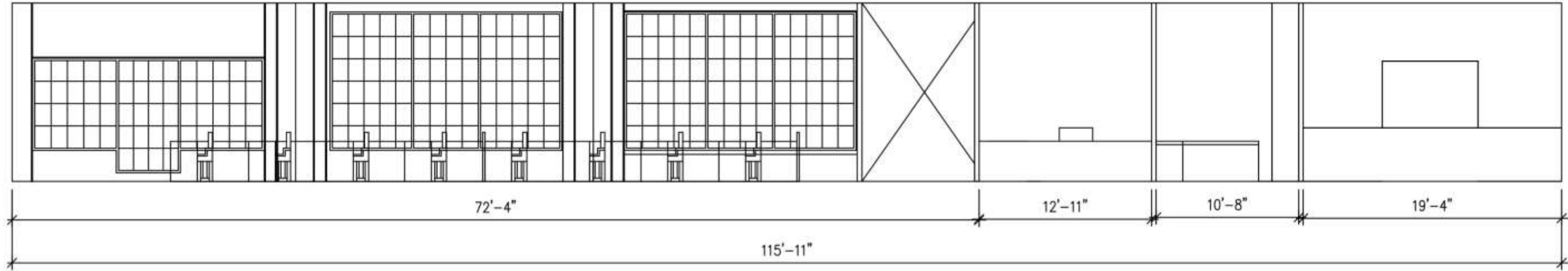
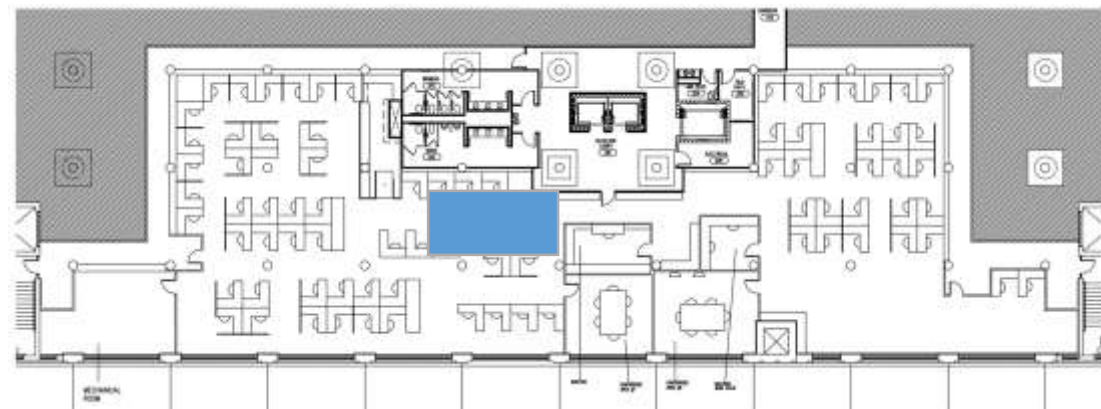


IMAGE	TYPE	QUANTITY
	HANGING PENDANT	75
	RECTANGULAR RECESSED	10
	SQUARE RECESSED	37

Reflected Ceiling Plan: 1/16" = 1'-0"



E-W Sections: 1/8" = 1'-0"



Perspective: Main Circulation

Furniture and Finishes - Main Circulation



Ceiling, Armstrong



Wall Color



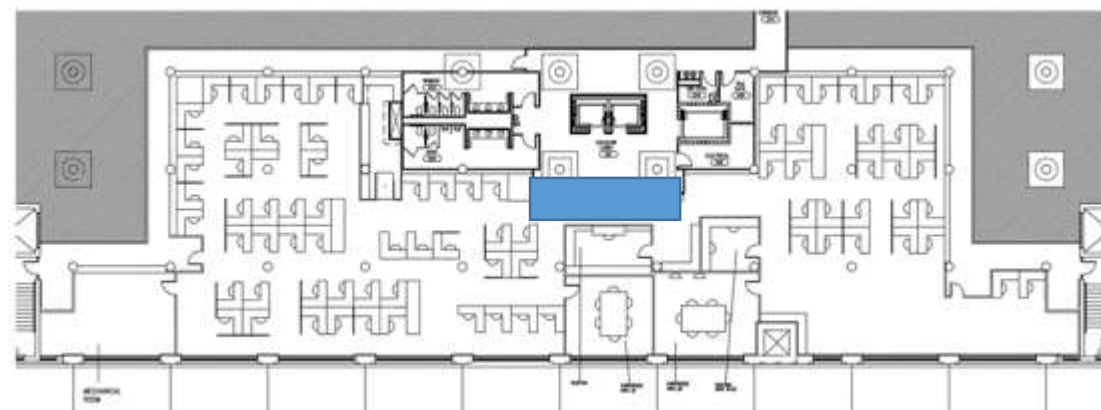
Carpet



Lighting Fixtures



Herman Miller Desk Chair

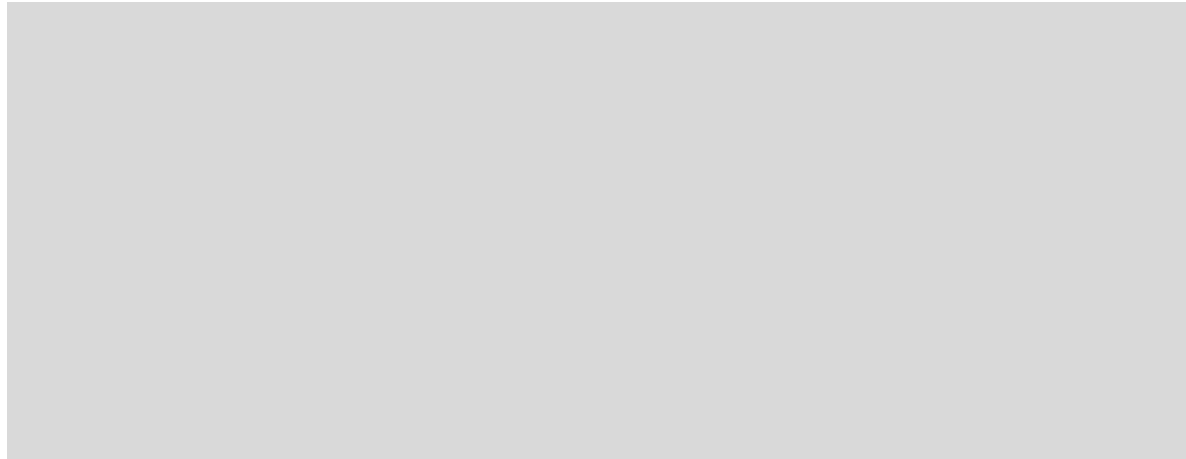


Perspective: Reception Area

Furniture and Finishes - Reception Area



Acoustical Ceiling Tiles



Wall Color



Accent Wall Material



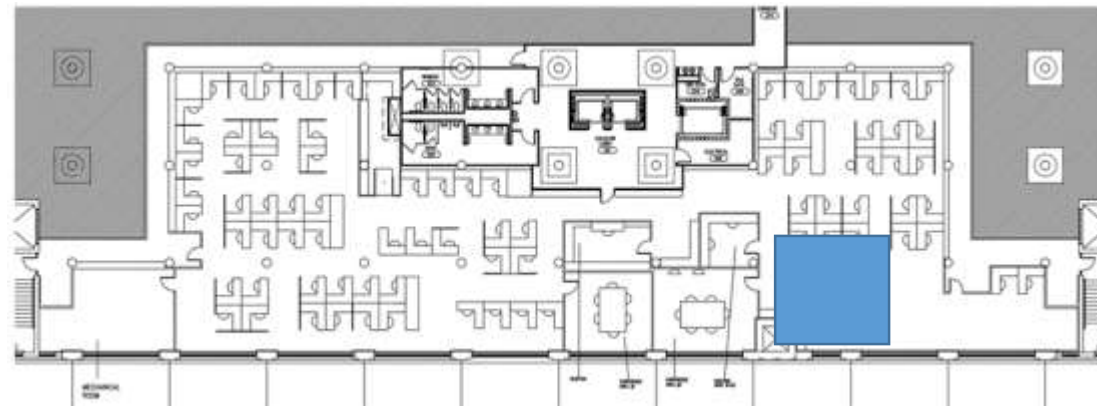
Floor Material



Wall Sconce



Herman Miller Desk Chair



Perspective: Concept Lounge

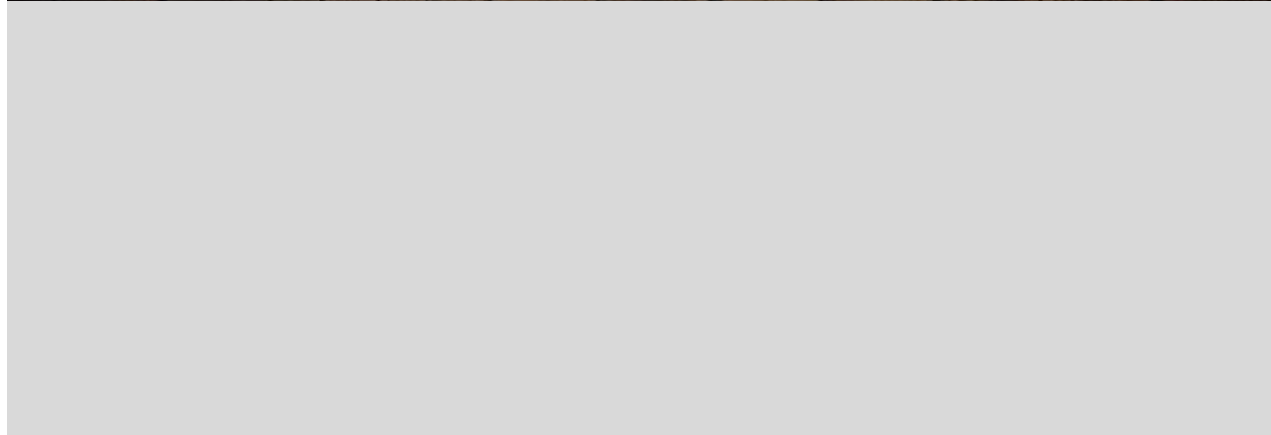
Furniture and Finishes - Concept Lounge



Ceiling, Armstrong



Barstools



Wall Color



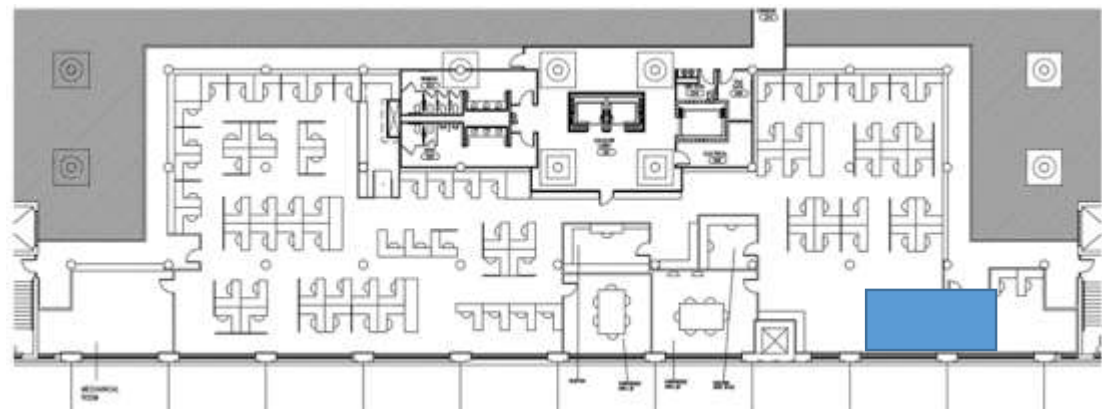
Accent Wall Material



Carpet



Lounge Chairs

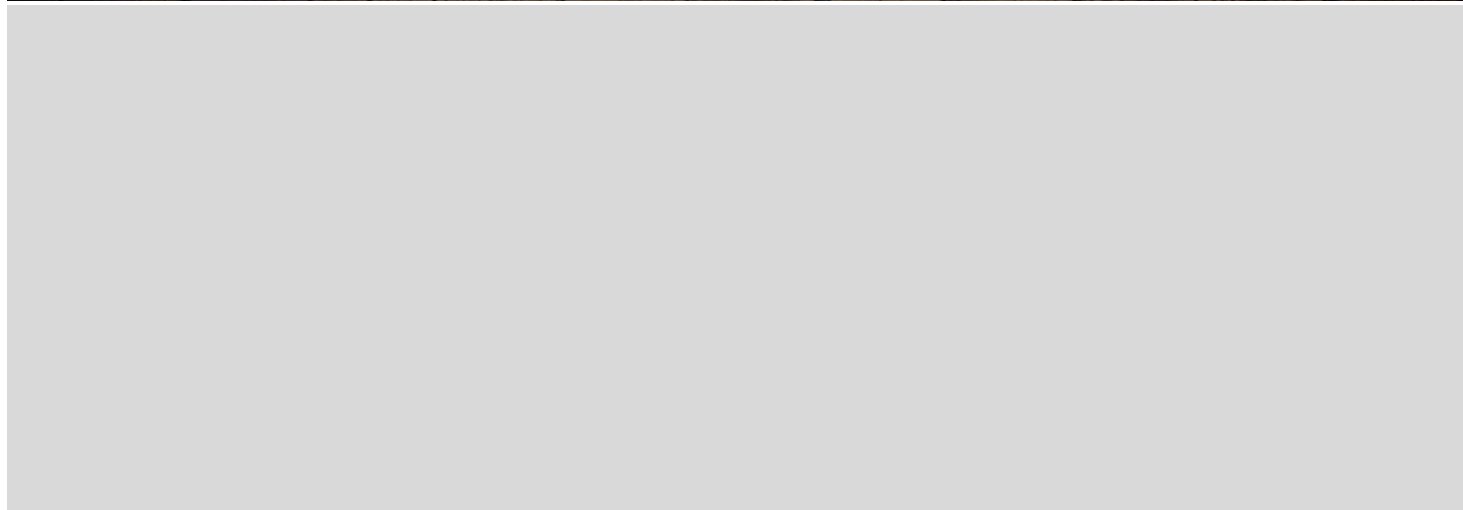


Perspective: Break Room

Furniture and Finishes - Break Room



Ceiling, Armstrong



Wall Color



Carpet



Maple Cabinets