

PORTFOLIO 3

Ivy Griggs

IDSN 3600

FALL 2015

Concept

- ▽ Create an environment that will let coworkers be inspired
 - ▽ Inviting spaces that are comfortable and relaxing
 - ▽ Encourage people to collaborate and network
 - ▽ Keeping the original space and materials in tact while adding new designs
 - ▽ Meshing industrial and modern styles
 - ▽ Inspire employee wellness inside and outside of the work place
-

IDSN 3600

Systems III

Professor Gustina

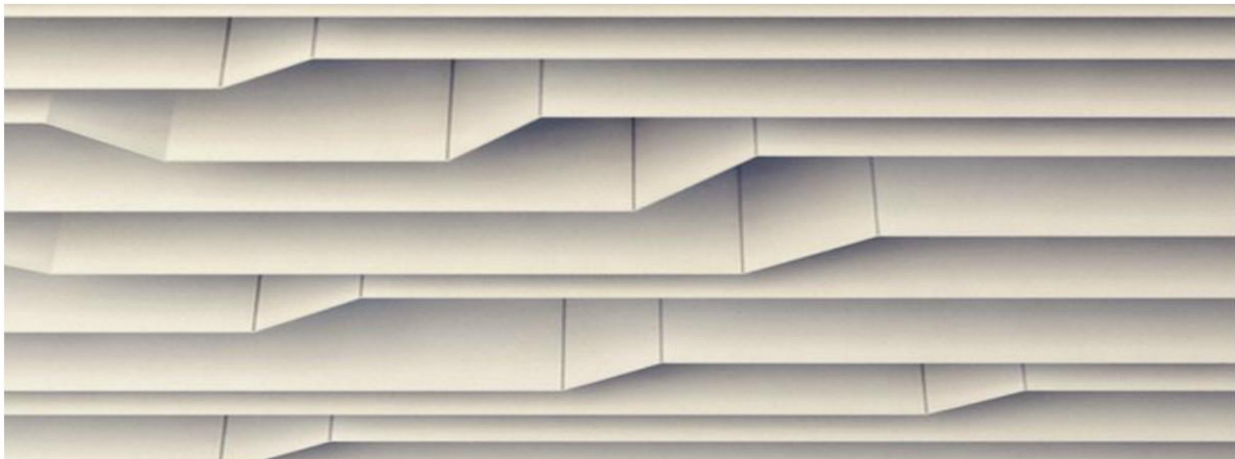
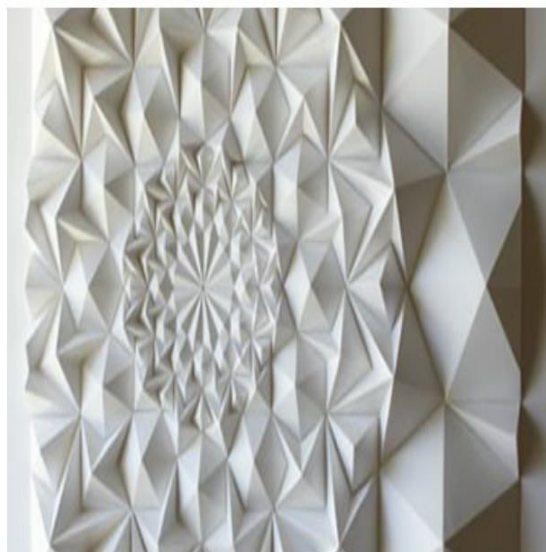
Assignment 12a

Concept Statement

Department of Interior
Design & Merchandising

College of Human
Ecology

East Carolina University



IDSN 3600

Systems III

Professor Gustina

Assignment 12a

Inspiration

Department of Interior
Design & Merchandising

College of Human
Ecology

East Carolina University



Statement of Sustainability Strategy

- ▽ "*Embodied energy* is the total energy required for the extraction, processing, manufacture and delivery of building materials to the building site."
- ▽ In order to influence the reduction of embodied energy in the work space, most building materials will be salvaged from previous projects, including the hardwood floors and bricks. Almost every surface will be made from recycled materials
- ▽ Nearly every single item or material in the space will be recyclable and/or biodegradable
- ▽ Most lights will be equipped with an LED bulb which cuts down energy use as well as expenses
- ▽ Plants located throughout the space will aid in the filtration of air
- ▽ Track system allows adjustment of light within the space

IDSN 3600

Systems III

Professor Gustina

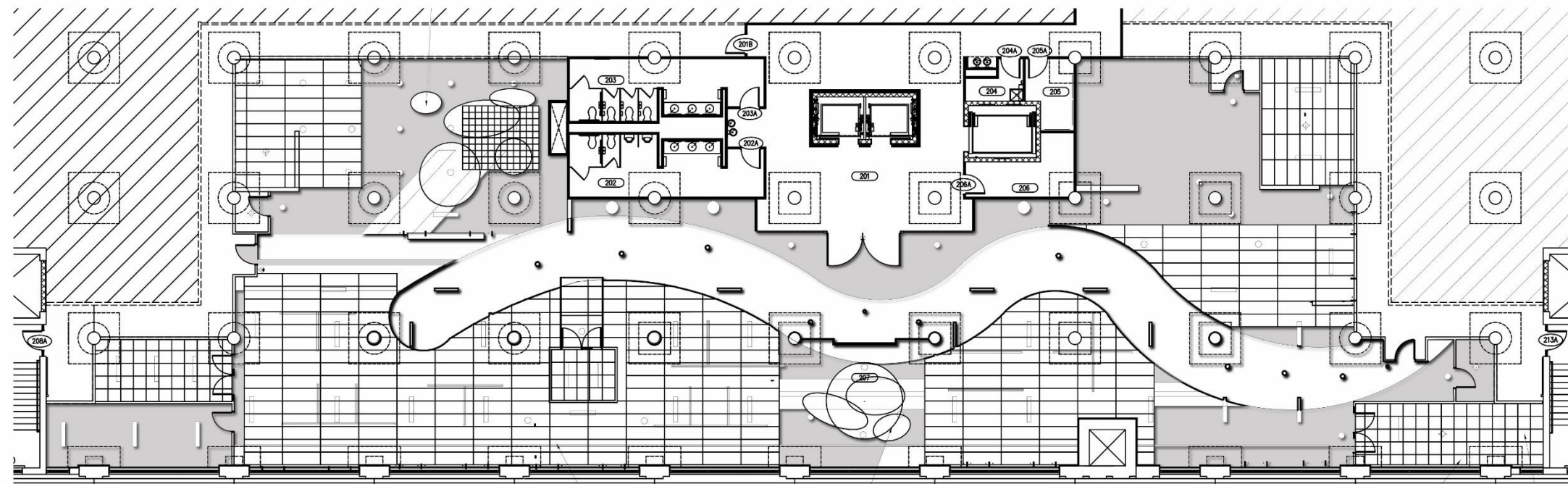
Assignment 12a

Sustainability Statement

Department of Interior
Design & Merchandising

College of Human
Ecology

East Carolina University



IDSN 3600

Systems III

Professor Gustina

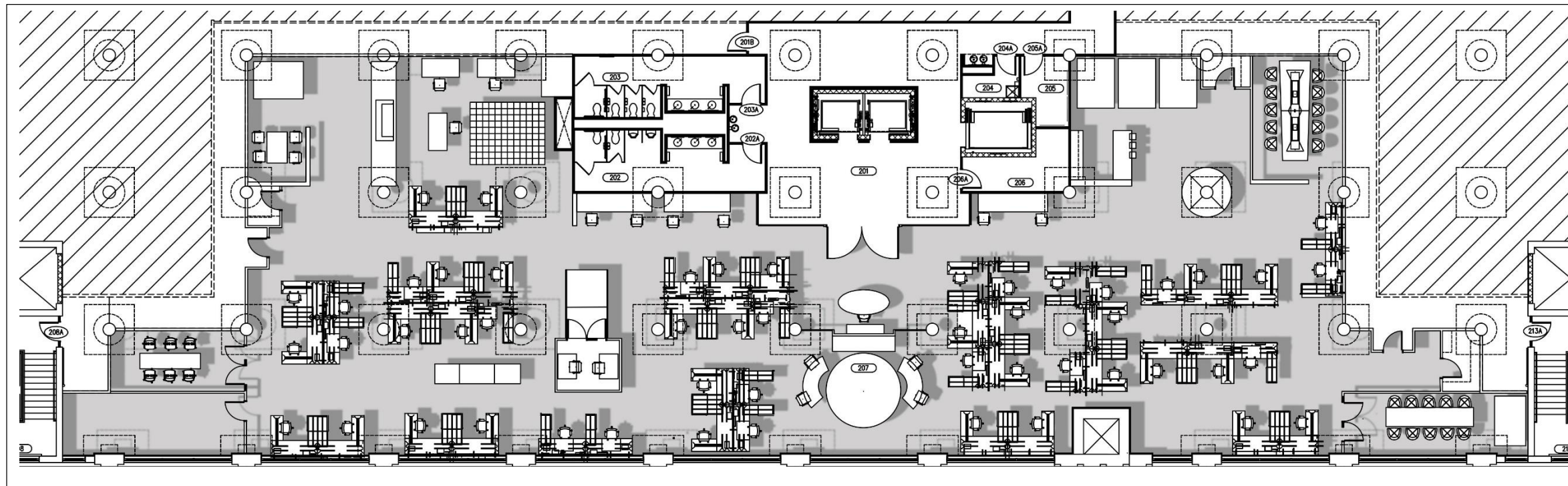
Assignment 12b

Rendered Reflected Ceiling
Plan

Department of Interior
Design & Merchandising

College of Human
Ecology

East Carolina University



IDSN 3600

Systems III

Professor Gustina

Assignment 12b

Rendered Furniture Plan

Department of Interior
Design & Merchandising

College of Human
Ecology

East Carolina University

IDSN 3600

Systems III

Professor Gustina

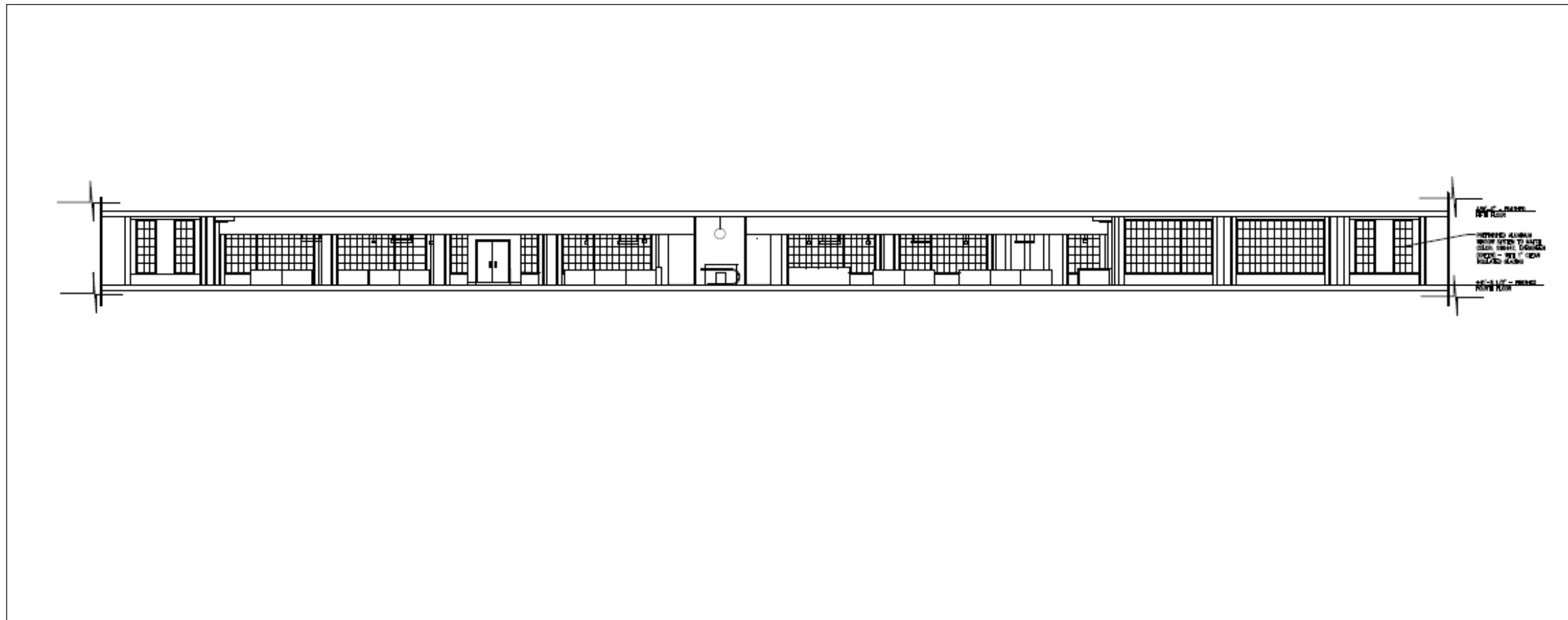
Assignment 12b

Section View

Department of Interior
Design & Merchandising

College of Human
Ecology

East Carolina University





IDSN 3600

Systems III

Professor Gustina

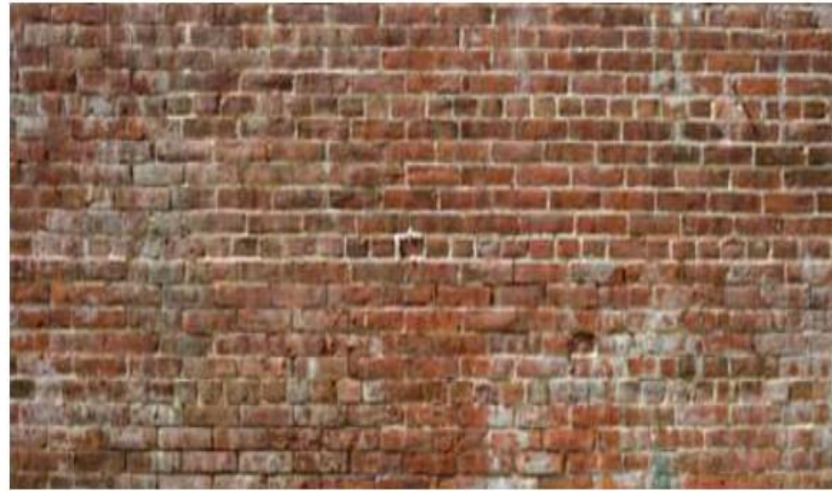
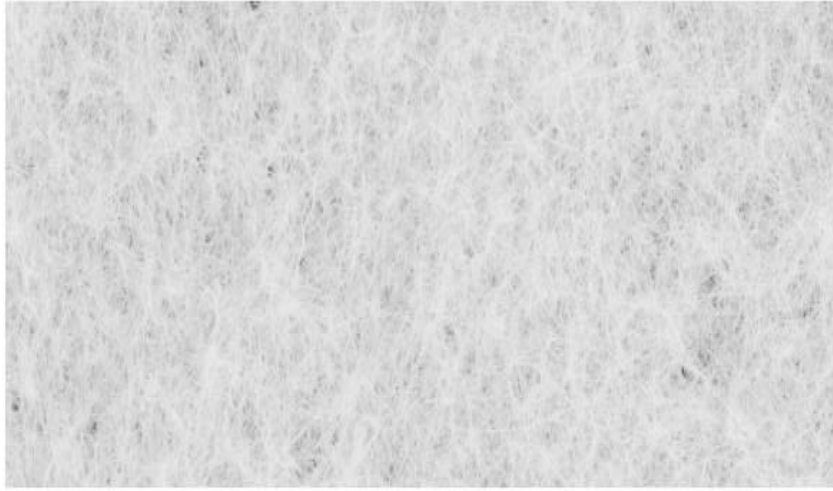
Assignment 12c

Rendered Reception

Department of Interior
Design & Merchandising

College of Human
Ecology

East Carolina University





IDSN 3600

Systems III

Professor Gustina

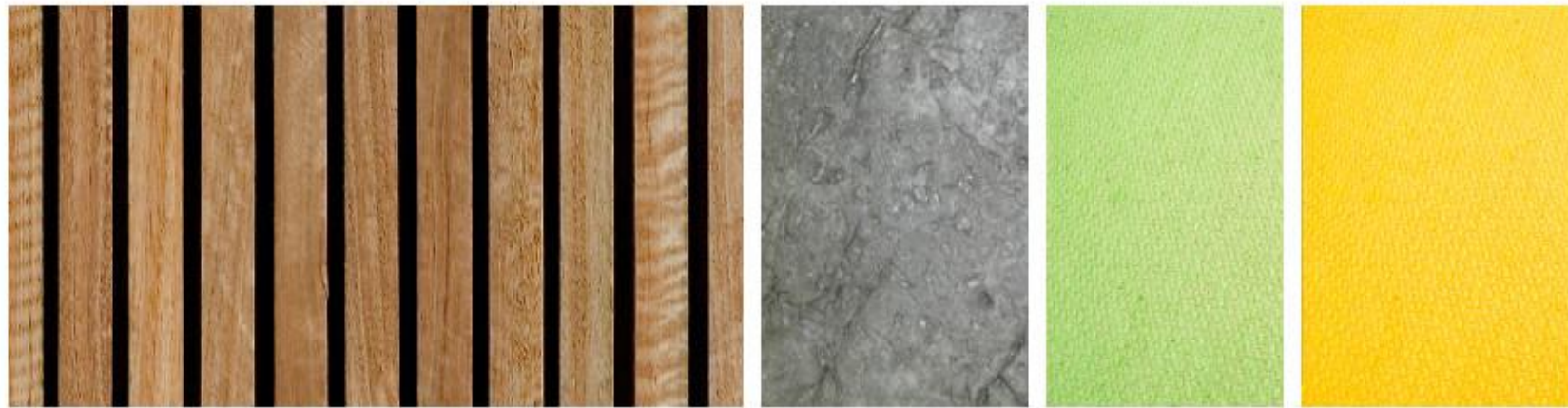
Assignment 12c

Rendered Wellness Lounge

Department of Interior
Design & Merchandising

College of Human
Ecology

East Carolina University





IDSN 3600

Systems III

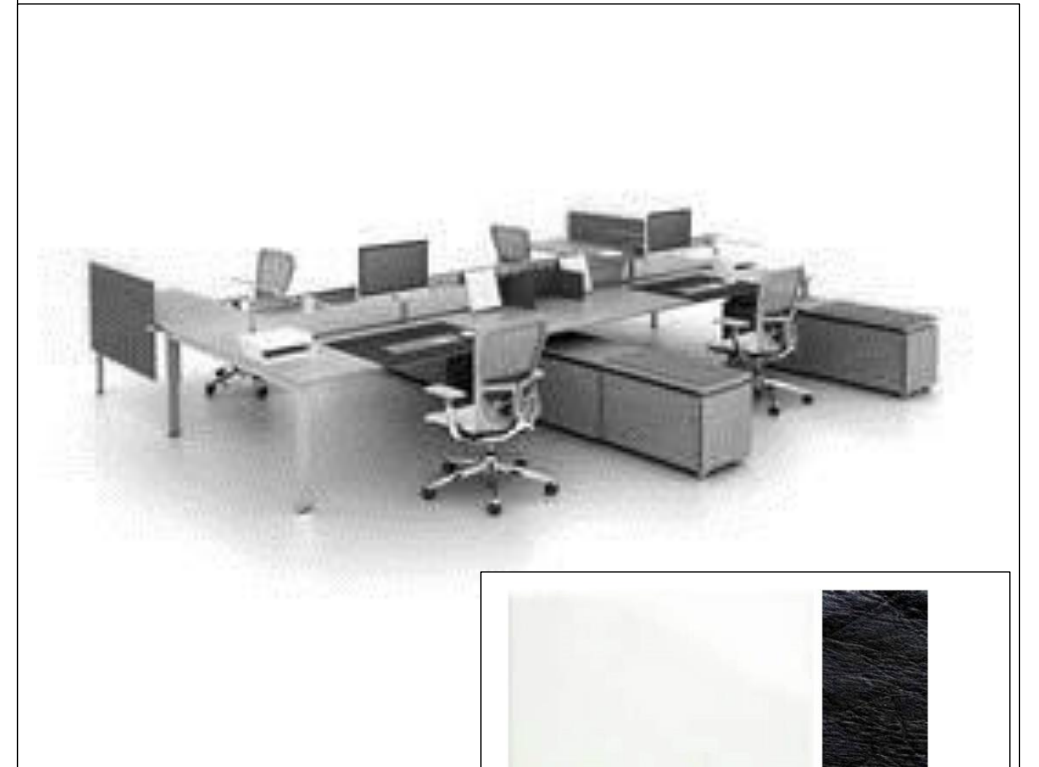
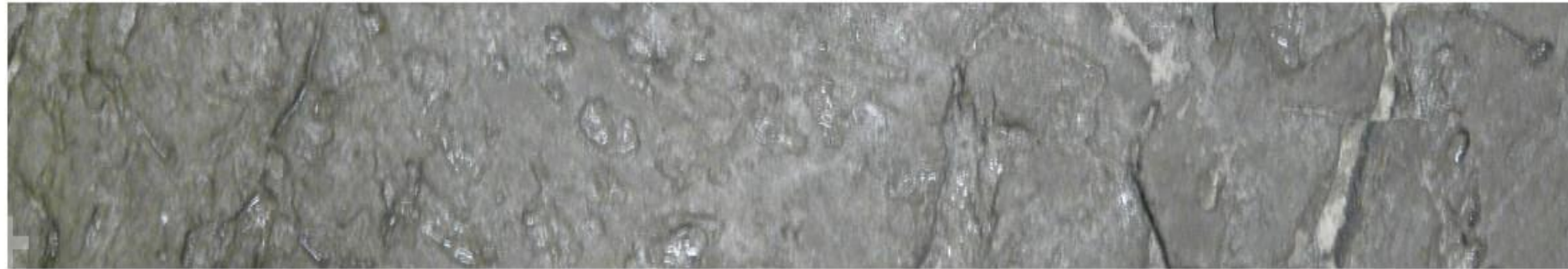
Professor Gustina

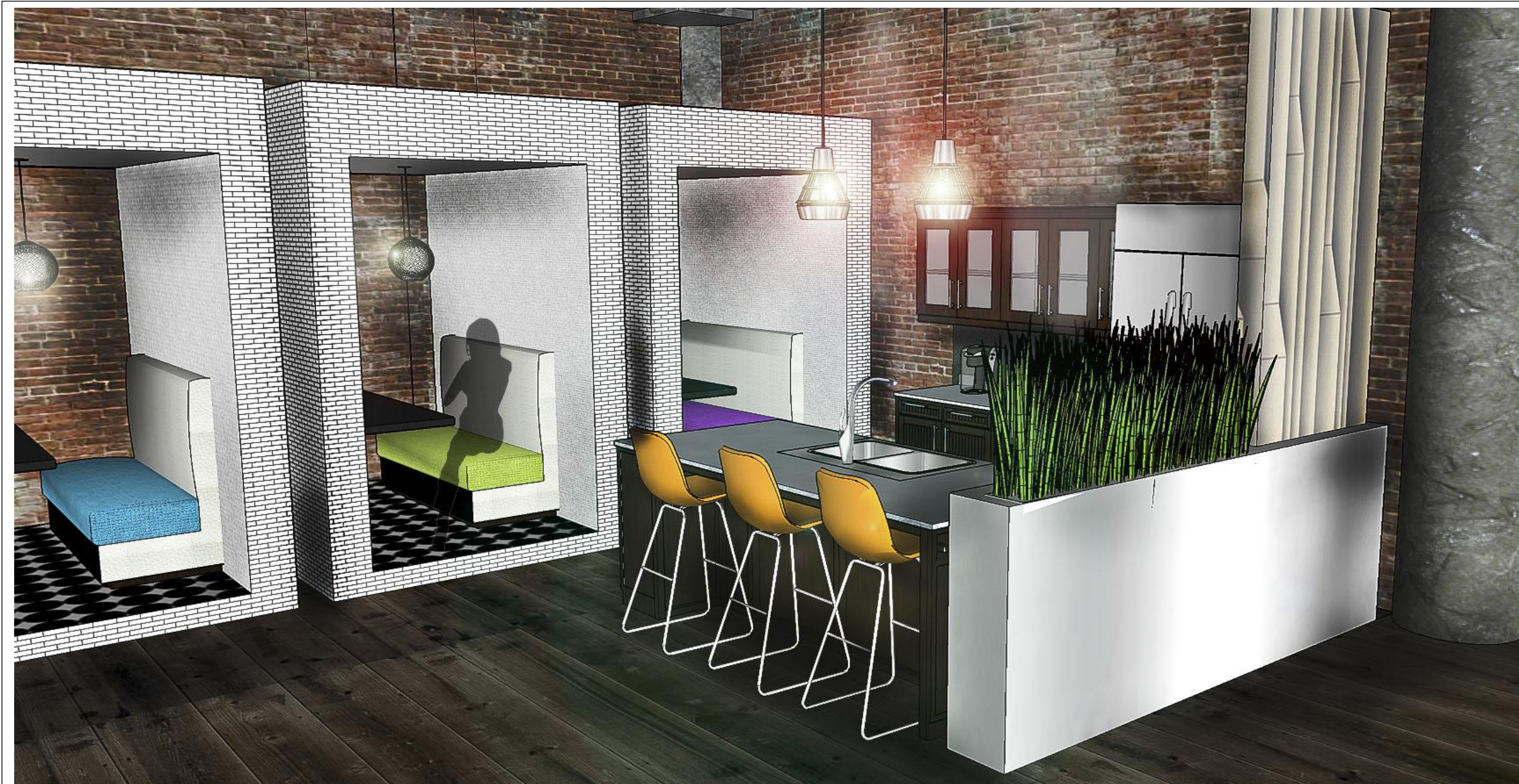
Assignment 12c

Rendered Main Circulation

Department of Interior
Design & Merchandising
College of Human
Ecology

East Carolina University





IDSN 3600

Systems III

Professor Gustina

Assignment 12c

Rendered Kitchen

Department of Interior
Design & Merchandising

College of Human
Ecology

East Carolina University



IDSN 3600

Systems III

Professor Gustina

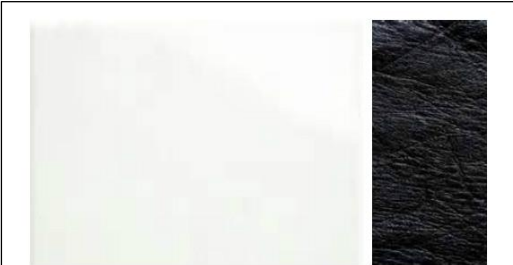
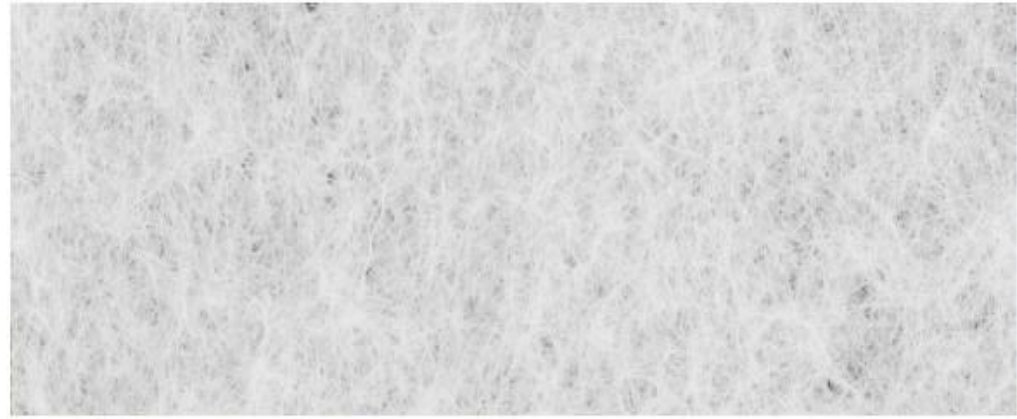
Assignment 12c

Rendered Work Area

Department of Interior
Design & Merchandising

College of Human
Ecology

East Carolina University





IDSN 3600

Systems III

Professor Gustina

Assignment 12c

Rendered Computer Server
Room

Department of Interior
Design & Merchandising

College of Human
Ecology

East Carolina University



IDSN 3600

Systems III

Professor Gustina

Assignment 12c

Rendered Lounge

Department of Interior
Design & Merchandising

College of Human
Ecology

East Carolina University