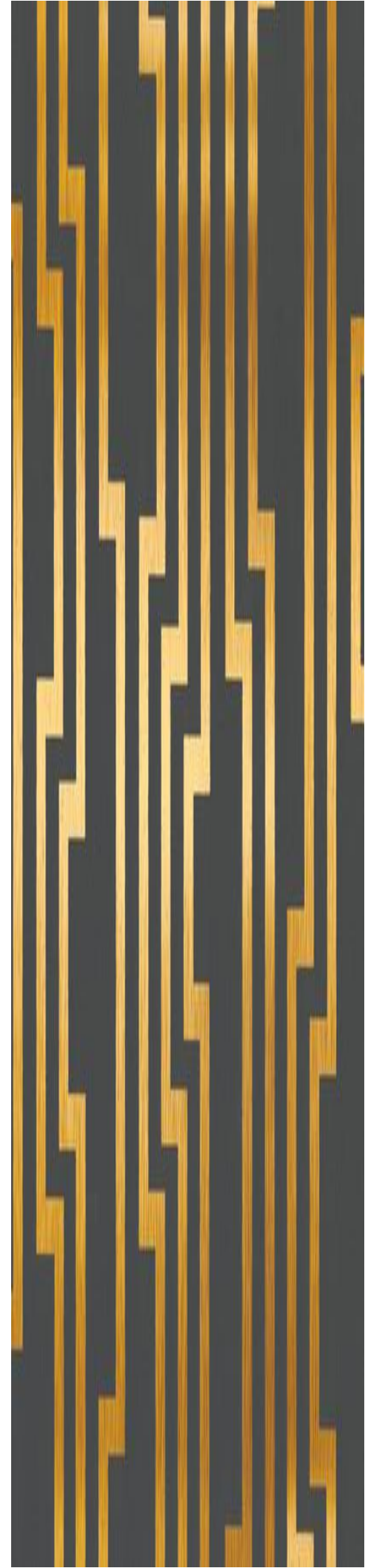


**PORTFOLIO THREE**

**MONICA JONES**

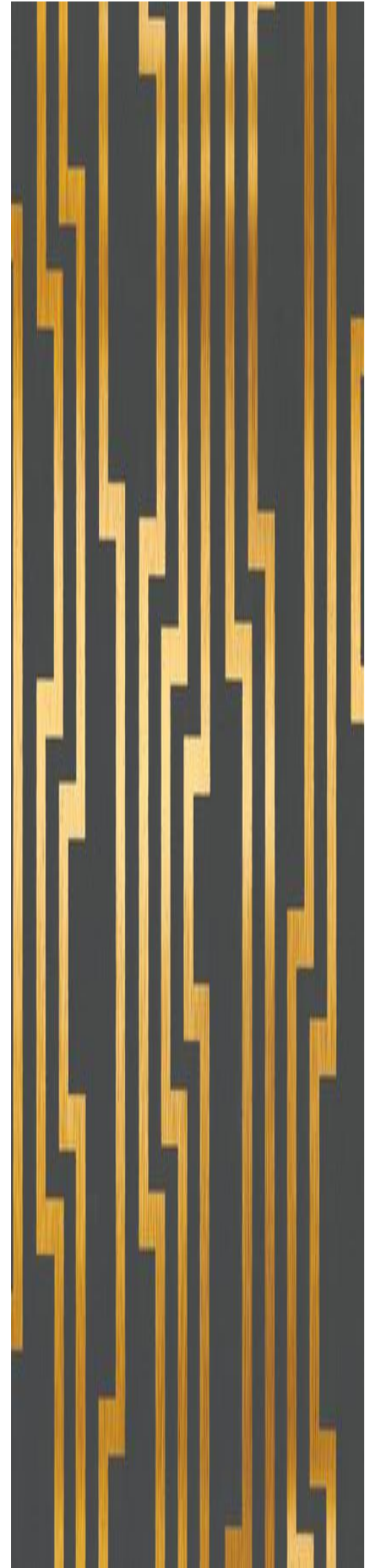
**FALL 2015**

**IDSN 3600**



# Concept Statement

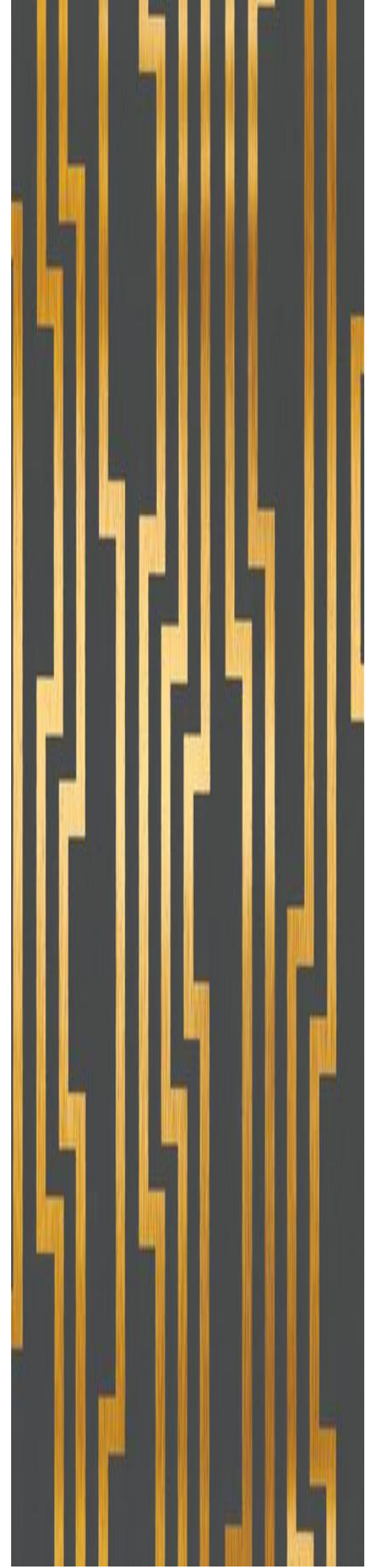
The Edgeworth building sits in a lot surrounded by former industrial buildings and facing a set of railroad tracks framed by vegetation lining the river. So was born the concept of a train station. With each train car having a designated use, so does each space, area, and work station within the space. Since this particular suite is meant to be a co-working space, a variety of work areas is a necessity. Everything from group conference rooms, to cozy single person desks, to small coves, this space has it. Trains are meant to take you to a variety of destinations, and so should your workspace.



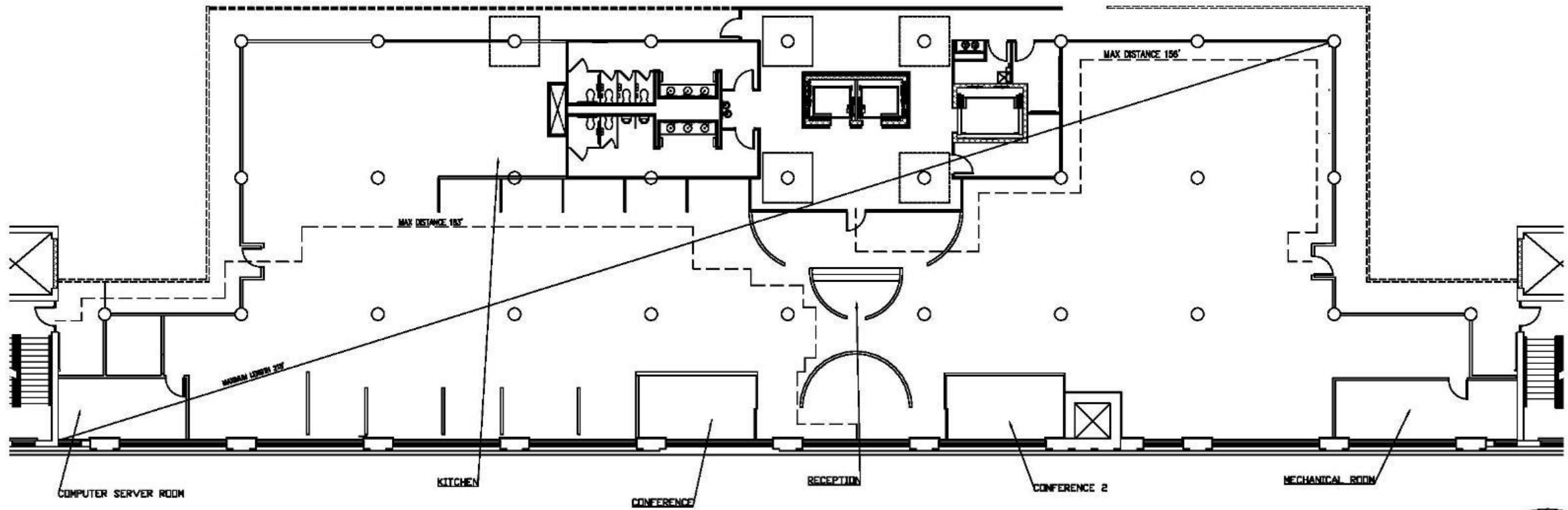
# SUSTAINABILITY STATEMENT



- REUSING EXISTING BUILDING CAPTURES EMBODIED ENERGY.
- MOBILE WINDOW SHADES WILL HELP PREVENT EXCESS HEAT IN THE WARMER MONTHS AND THE LARGE SIZE OF THE WINDOWS WILL HELP HEAT THE SPACE IN THE COOLER MONTHS. BOTH OF THESE FACTORS WILL HELP CUT DOWN ON HEATING AND COOLING COSTS.
- USE OF LOCAL PRODUCTS AND MATERIALS.
- MOTION SENSORS WITHIN DIFFERENT ROOMS IN THE SPACE WILL HELP CUT DOWN ON ELECTRICAL USAGE, ENSURING THAT LIGHTS WILL ONLY BE ON IN ROOMS BEING USED.
- THE USE OF ECO-FRIENDLY MATERIALS WILL HELP THE SPACE BE GREENER.
- LOW FLOW PLUMBING FIXTURES WILL BE INSTALLED TO REDUCE WATER USAGE.



# LIFE SAFETY PLAN



# LIGHTING ANALYSIS

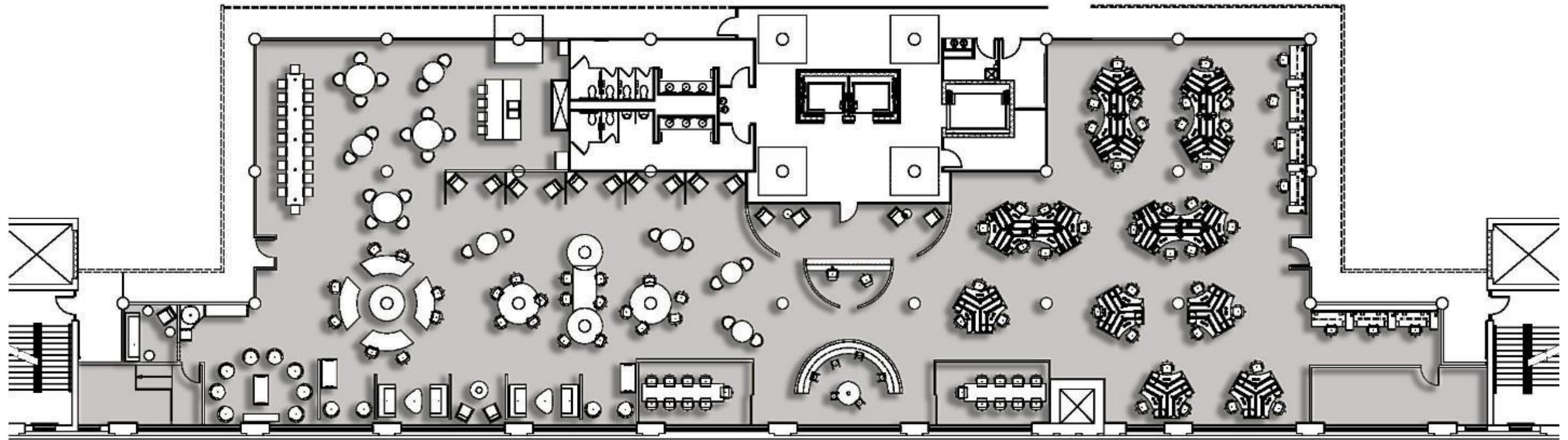
$$\text{MAINTAINED FC} = \frac{(\text{NUMBER OF LAMPS}) \times (\text{INITIAL LAMP LUMENS}) \times \text{LLF} \times \text{CU}}{\text{AREA}}$$

$$\frac{1 \times 2 \times 1.63 \times 45}{152} = 0.96513158$$









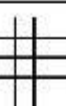
$$\text{RCR} = \frac{5(H)(L+W)}{L \times W}$$

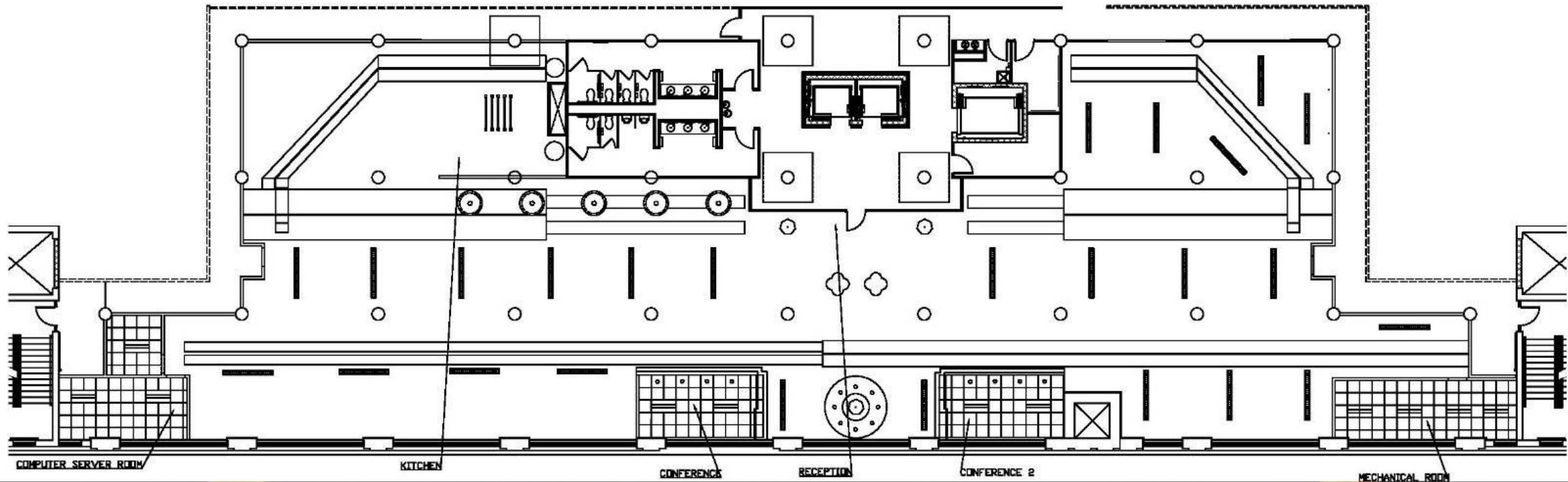
$$\frac{5(10)(19+8)}{19 \times 8} = 8.882$$

# RENDERED FURNITURE FLOOR PLAN



# RCP AND LIGHTING LEGEND

LIGHTING LEGEND	
	HANGING FLUORESCENT STRIP LIGHT
	RECESSED LED LIGHT
	HANGING LARGE PENDANT LIGHT
	HANGING WOOD PANEL STRIP LIGHT
	HANGING GEOMETRIC PENDANT LIGHT
	HANGING ORBITAL PENDANT LIGHT
	RECESSED FLUORESCENT LIGHT
	QUATRAFOL HANGING LIGHT
	ACOUSTICAL TILING 12"





## EAST SECTION

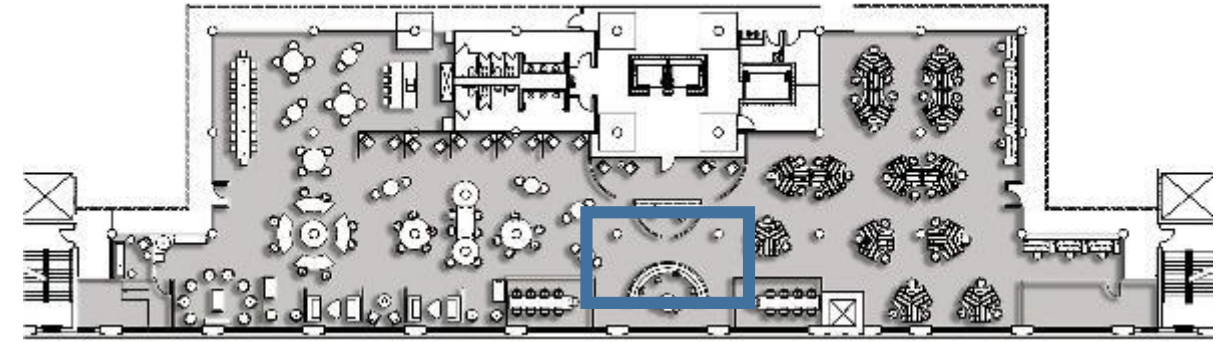


## WEST SECTION

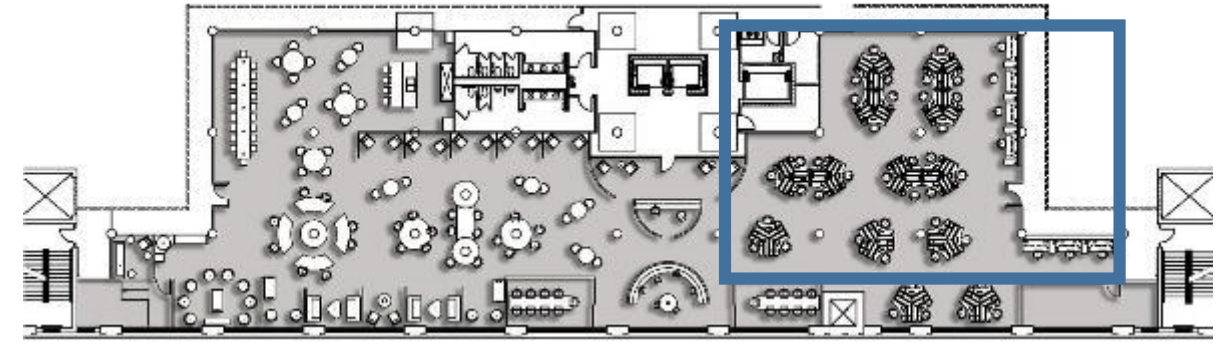




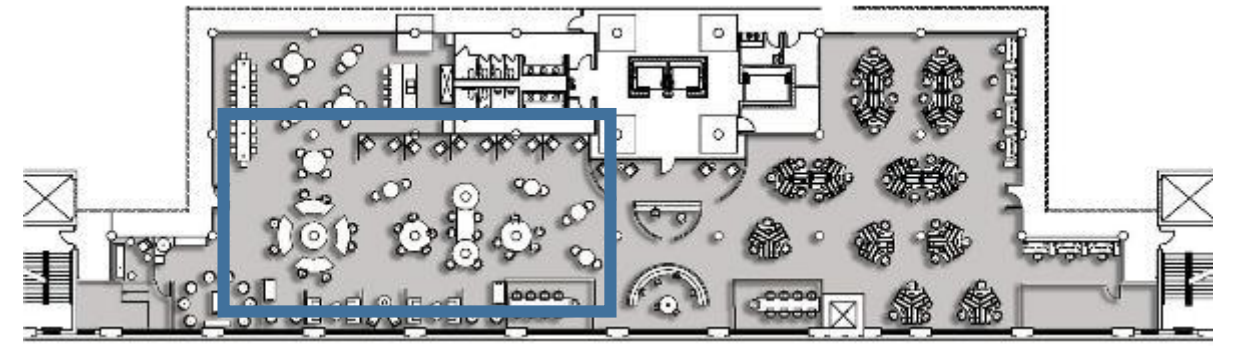
# RECEPTION AREA



# OPEN WORK AREA



# MAIN CORRIDOR & COLLAB



# LOUNGE

