

Portfolio Three

Scarlett Salter
Edgeworth Building, Richmond, VA
Fall 2015

Concept Statement:

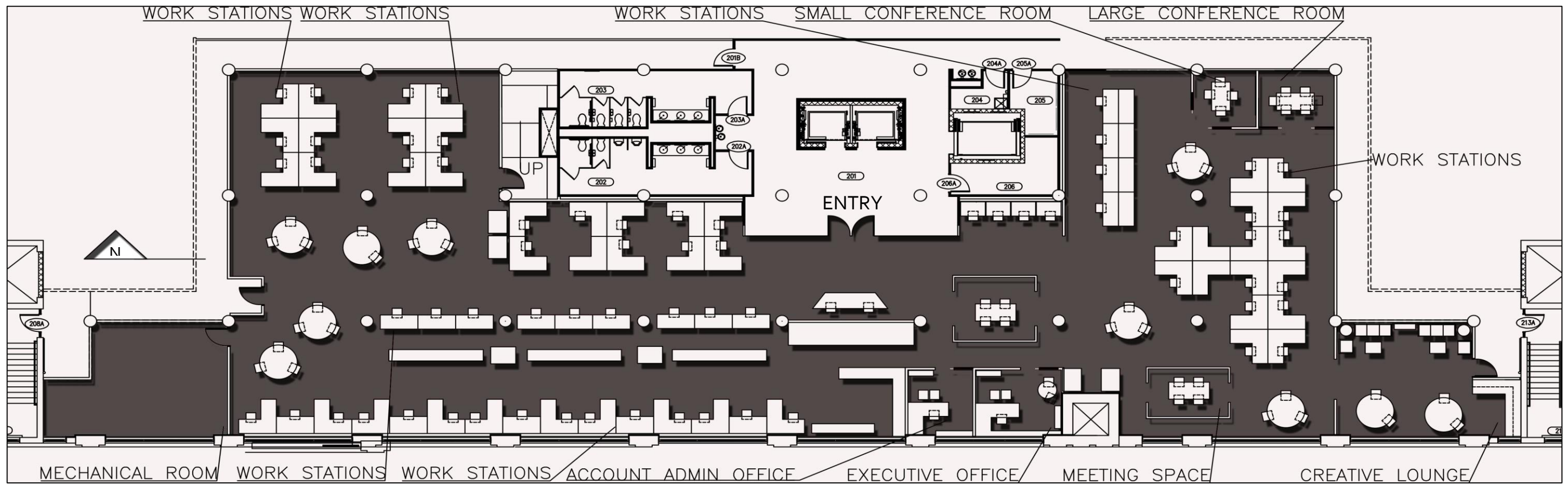
- Materials used in the construction and aesthetic Railroad Infrastructures include steel, iron and wood, and will be referenced throughout the design.
- The wrought iron structure will be interpreted in the space through decorative elements.
- The open spaces that allow people to interact and socialize will also be interpreted throughout the design.
- The horizontality that trestles and rail road cars visually represent will also be aesthetically interpreted.
- Glass will also be a common material used in this space, also referencing the horizontality of the rail road cars.



Statement of Sustainability

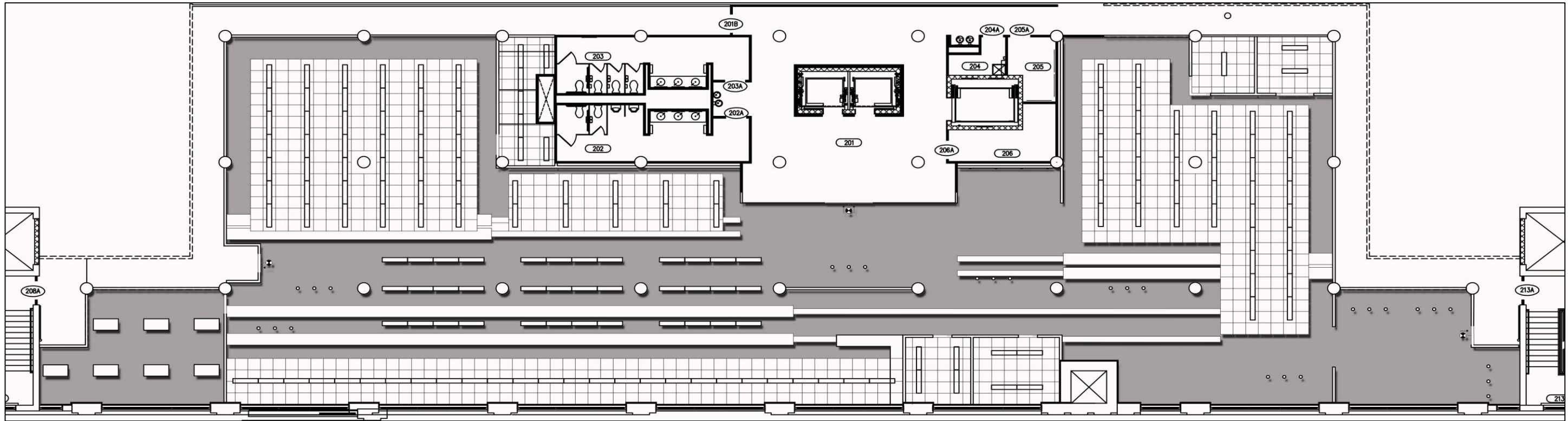
- Embodied Energy- all the energy that went into building the building in the first place.
- We will re-purpose and revitalize the structure.
- The size of the preexisting windows will allow for ample light to filter in throughout the day, which can eliminate how much light is used during the day, therefore reducing the amount of electricity usage dedicated to powering lights.
- Where there is infrequent traffic such as in meeting rooms or offices, there will be light sensors that detect when people enter, and will only be on when the space is occupied.
- When sheetrock, carpet, and other flooring is installed, the adhesive that will be used will have little to no toxins.
- Paint will be VOC free.





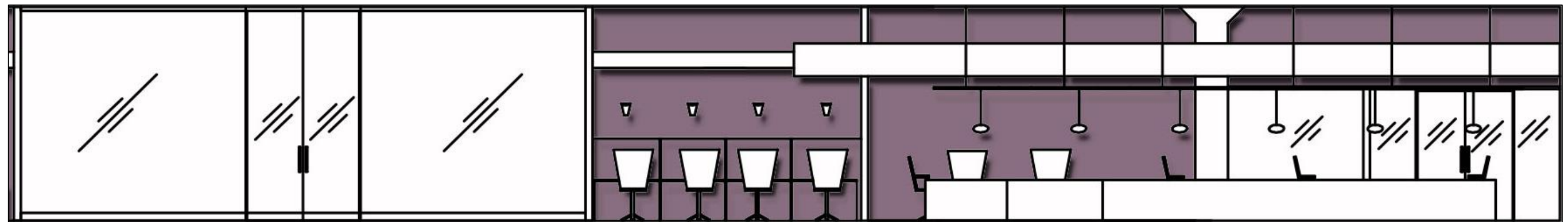
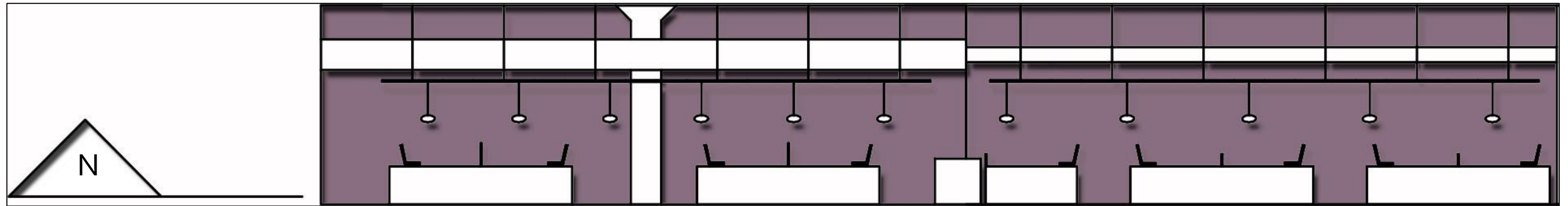
Furniture Floor Plan

1/16" = 1'-0"



Reflected Ceiling Plan

1/16" = 1'-0"



Section View of Entry and Work Stations

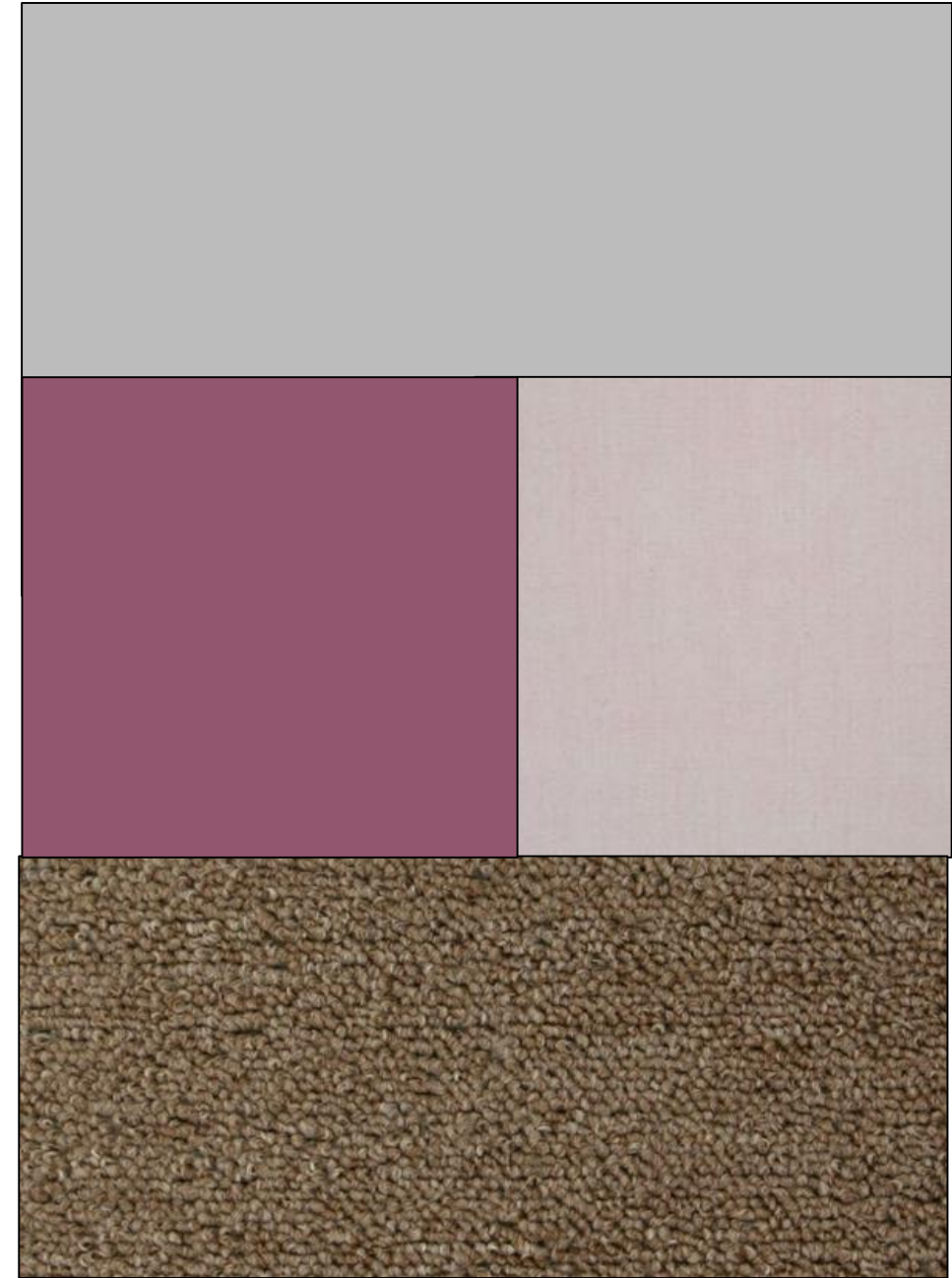


Open Work Stations



Open Work Stations

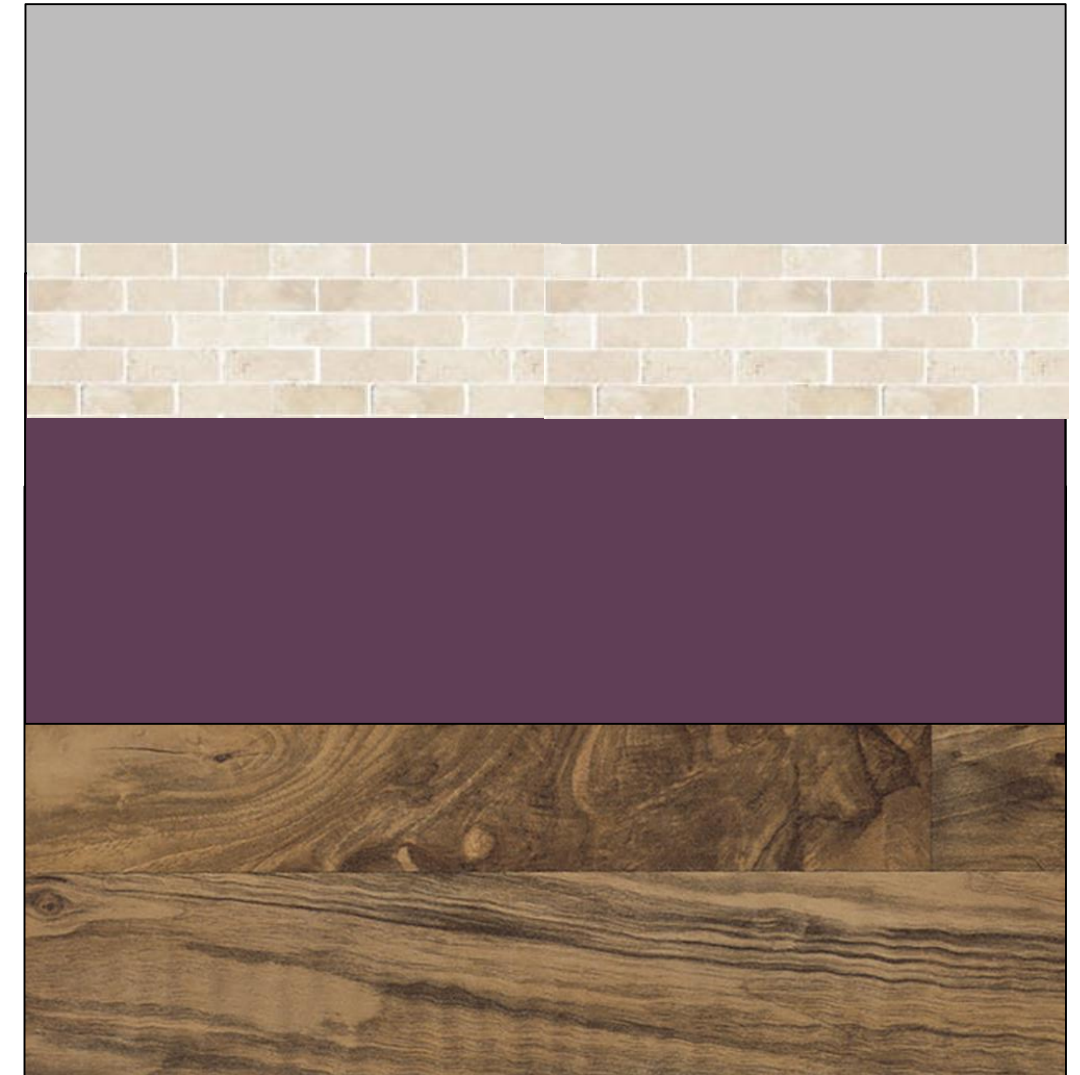
Furniture and Finishes – Open Work Stations





Lounge

Furniture and Finishes – Lounge





Reception / Entry

Furniture and Finishes - Reception

