

Rachel Skala

Systems- IDSN 3600

Portfolio 3

Final Schematic Design

Assignment 12a

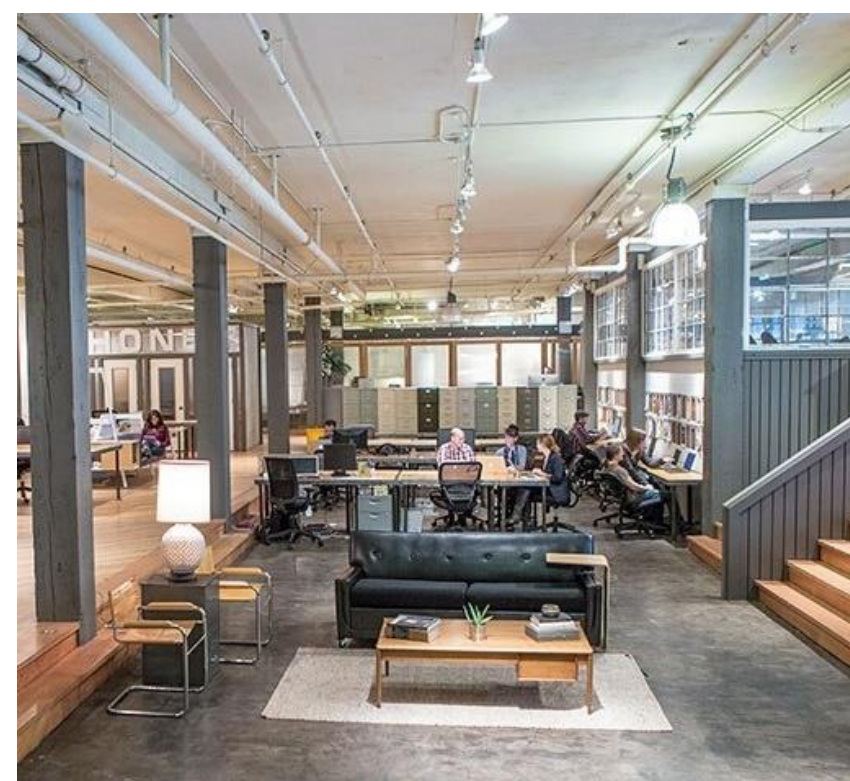
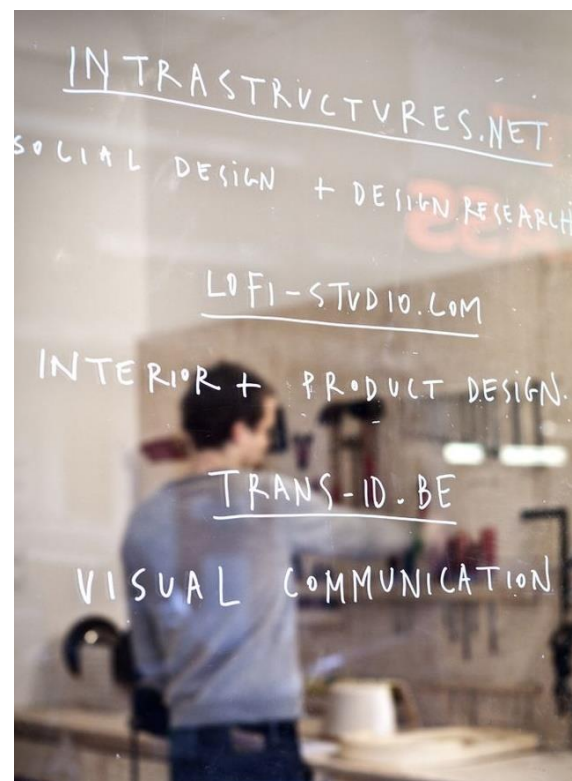
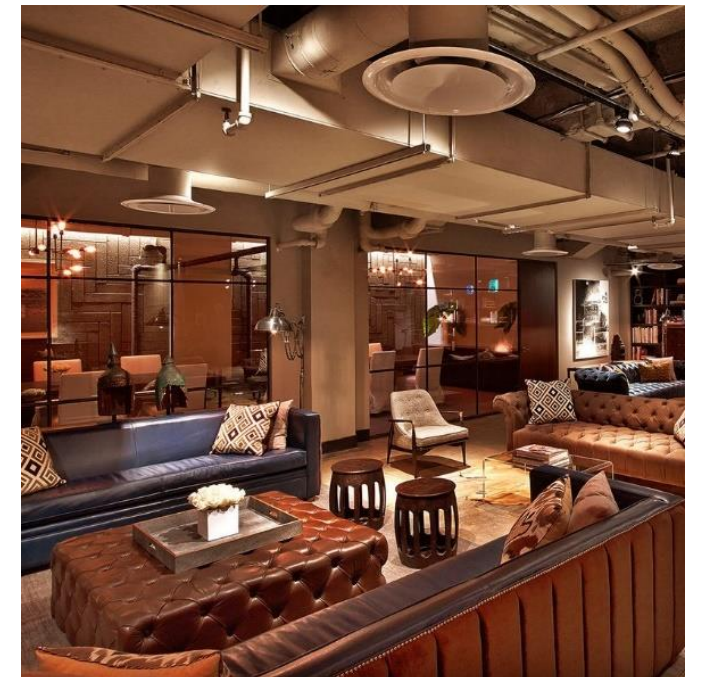
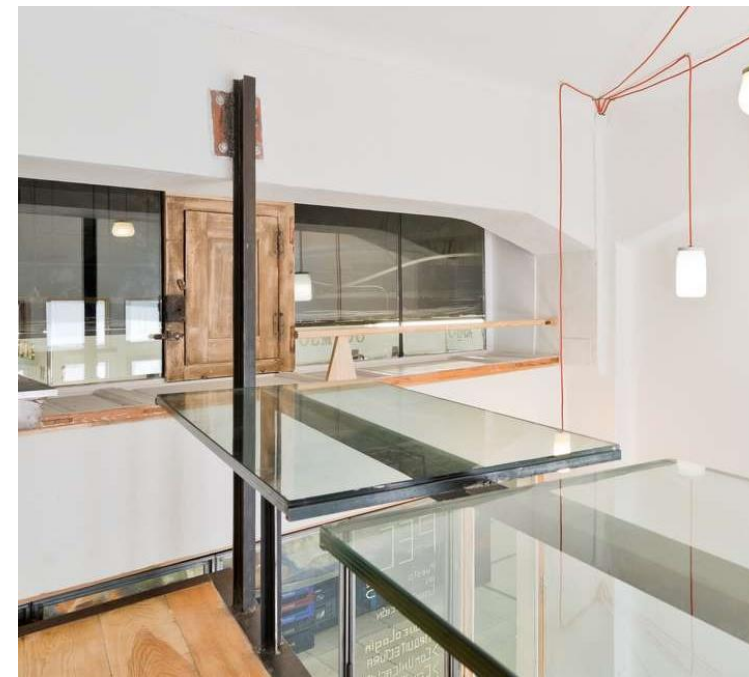
Concept Statement



- A stadium is organized into multiple sections, all circulating a center point
- All sections of the stadium have a view of the main attraction
- A traditional stadium possess an open concept while utilizing the height and full length of the space.
- A stadium will be filled with a diverse group of people that all share a common interest or purpose in being there.
- No two stadiums are identical and differ depending on their location and purpose.

Assignment 12a

Inspiration



Assignment 12a

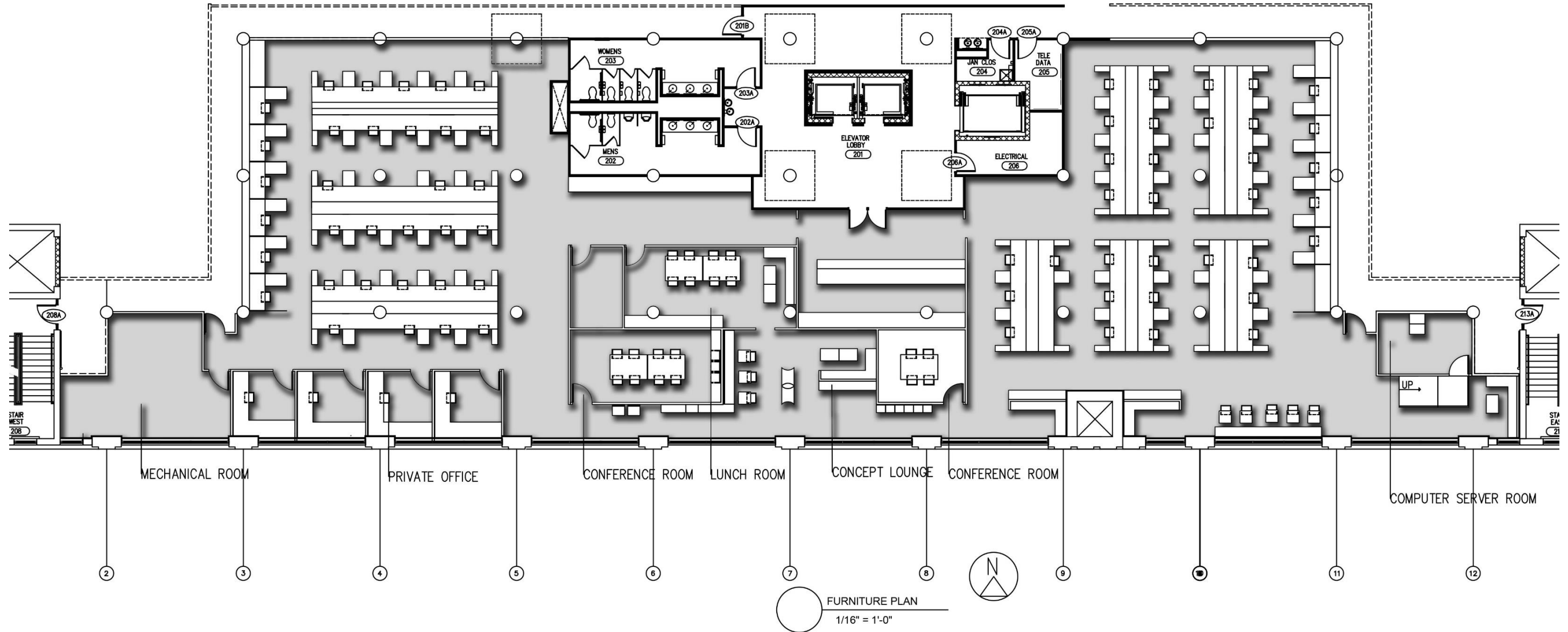
Statement of Sustainability Strategies



- Recycled materials will be incorporated
- Recycling will be made easy through the recycling bins located throughout the space
- LED lighting will also be used throughout
- Lighting will be on a timer and motion sensor
- Embodied energy will be utilized

Assignment 12b

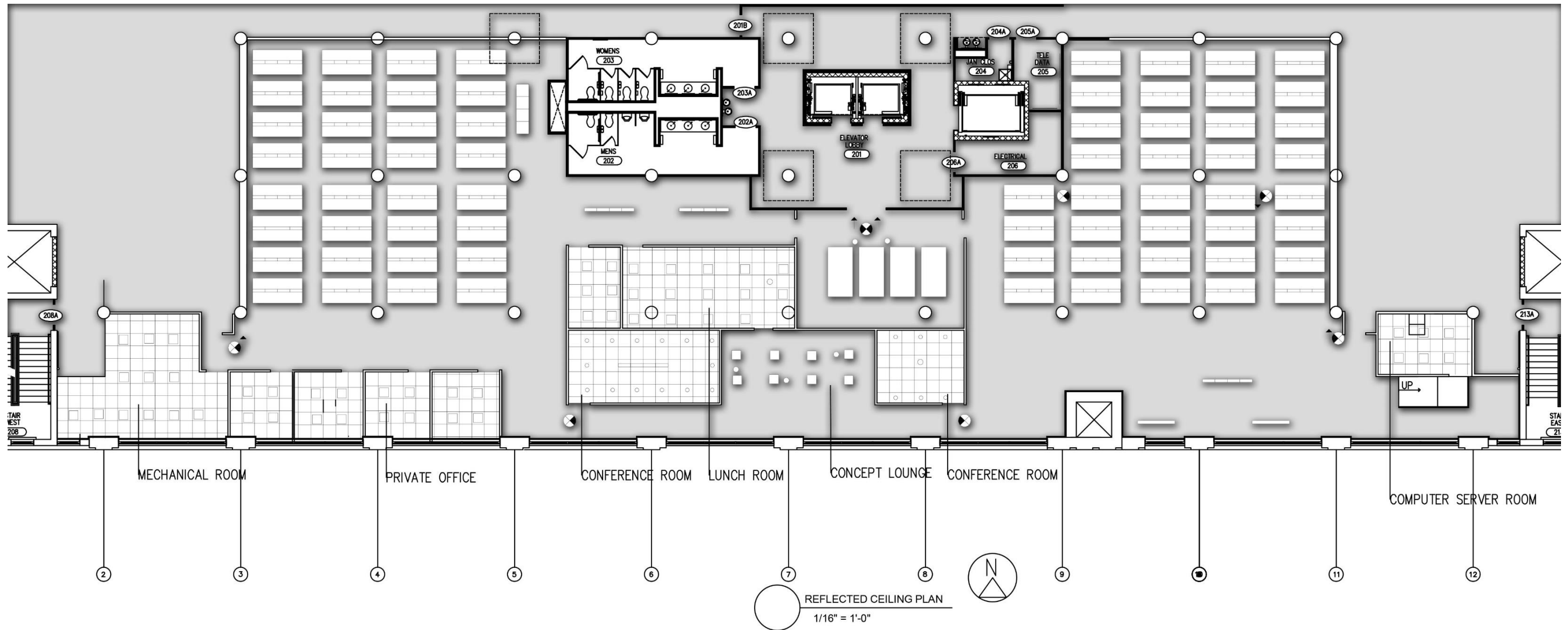
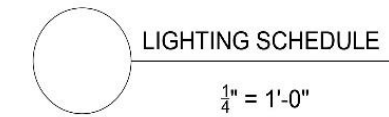
Furniture Plan



Assignment 12b

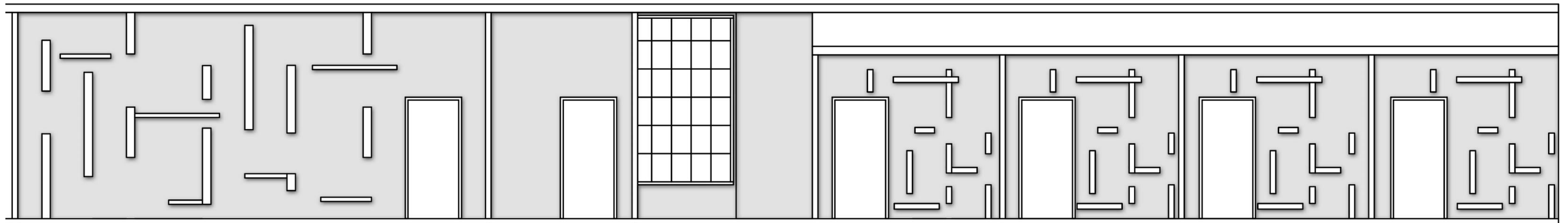
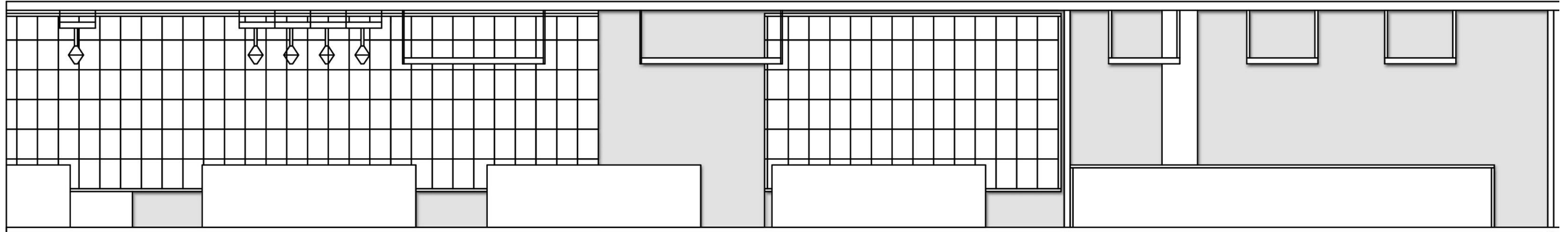
Reflected Ceiling Plan

LIGHTING SCHEDULE				
SYMBOL	FIXTURE	MANUFACTURER	SPECS	NOTES
	2X2 FIXTURE	TBD		CENTERED IN A.C.T
	DOWNLIGHT CAN	TBD	3" RADIUS	
	PENDANT FIXTURE	TBD	4 1/2" RADIUS	
	PENDANT FIXTURE	TBD	W: 6" L:96" OVERALL	EACH INDIVIDUAL IS 24" X 24"



Assignment 12b

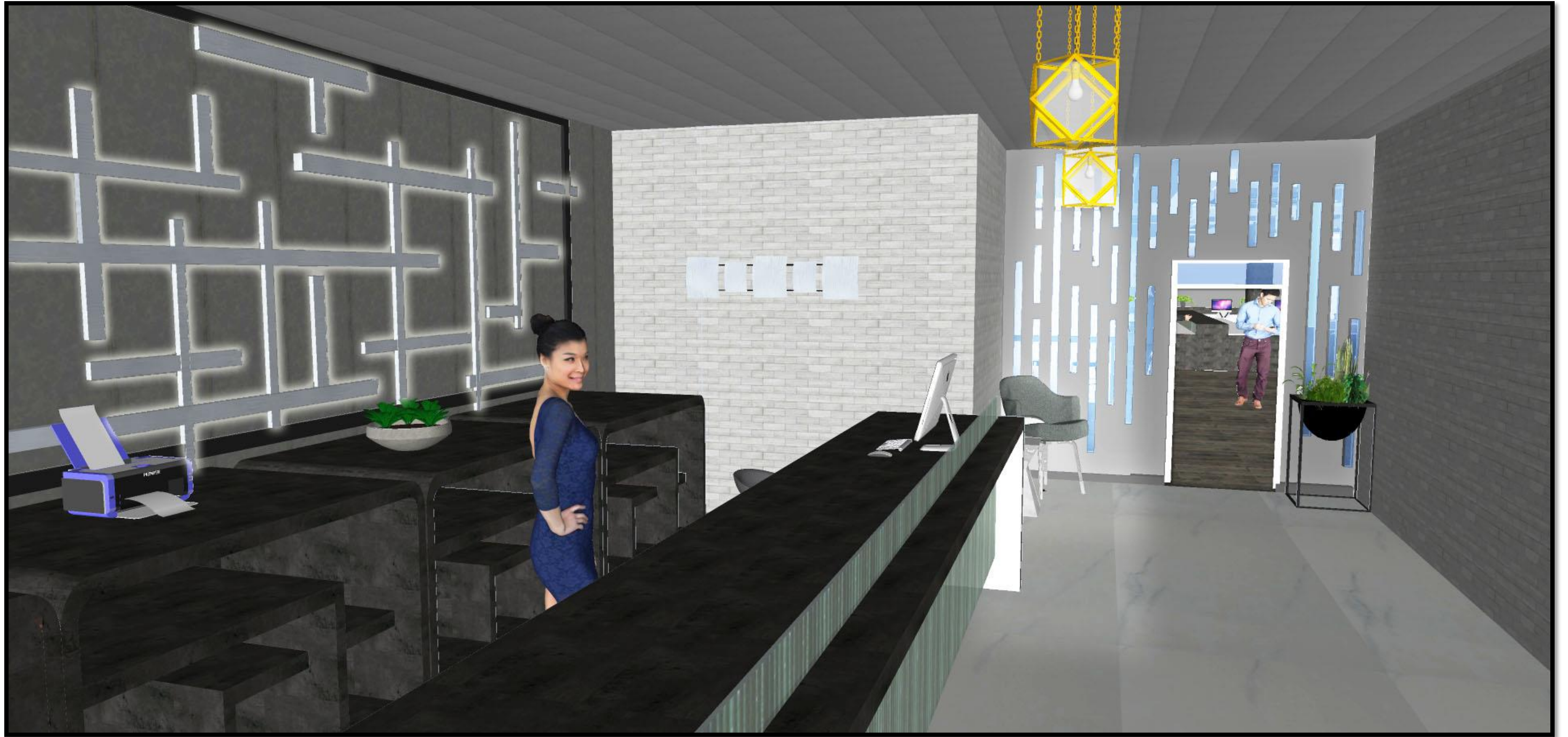
E-W Section



○ E-W SECTION
1/8" = 1'-0"

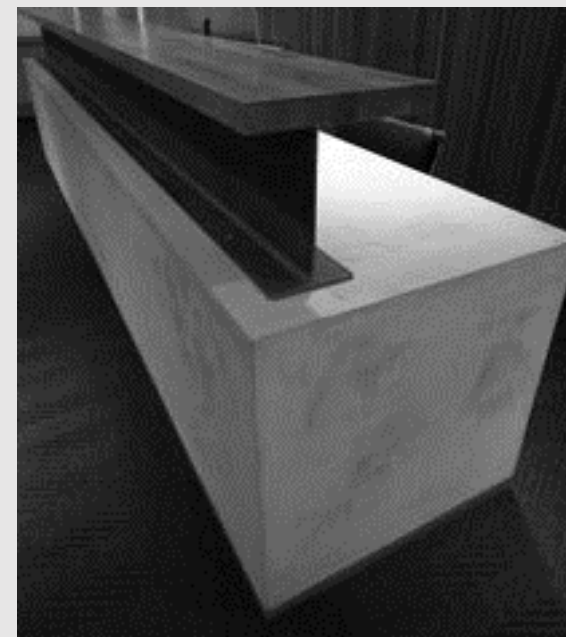
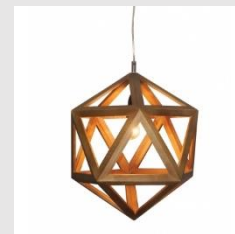
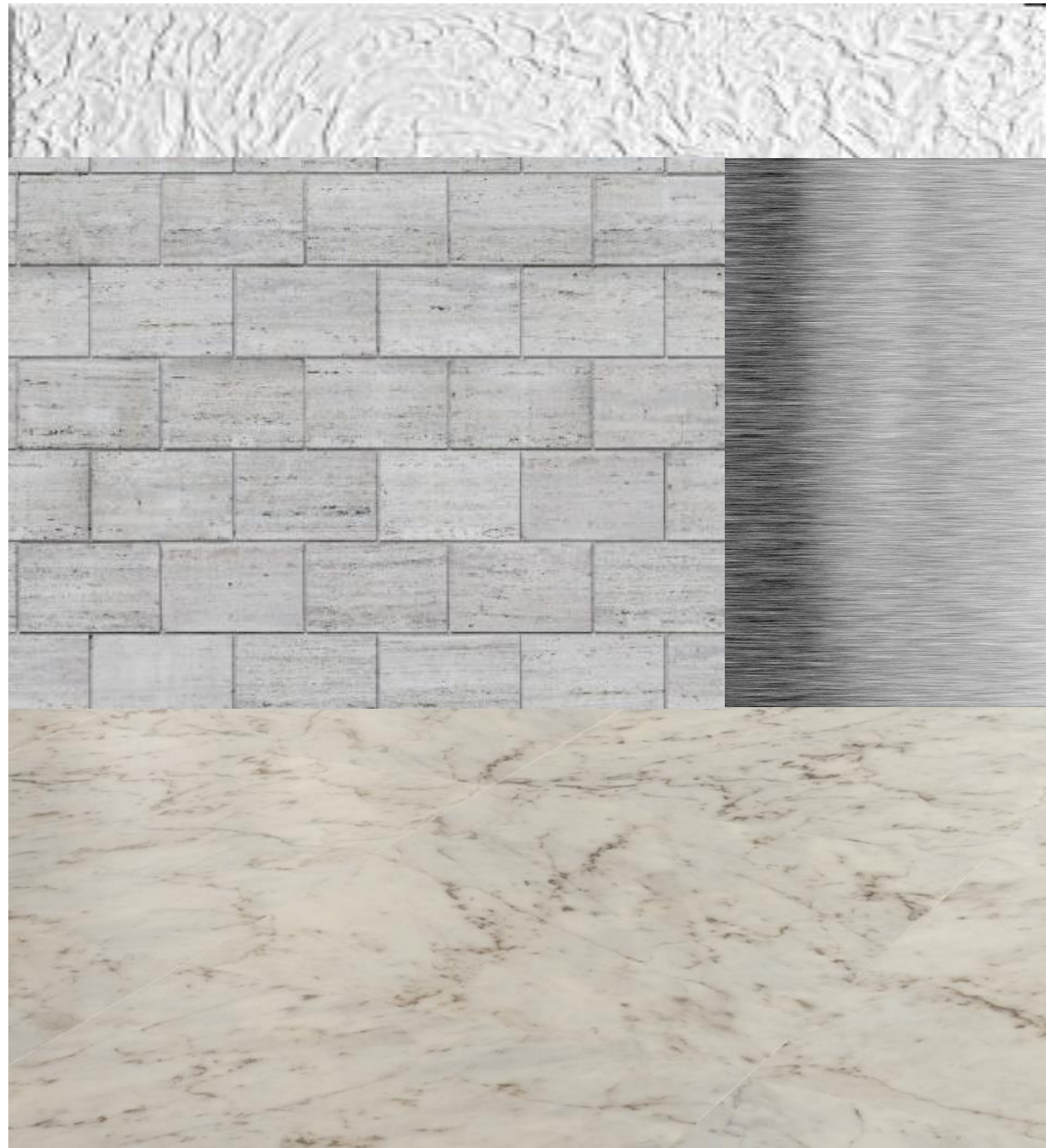
Assignment 12c

Reception Perspective



Assignment 12c

Reception Material Board



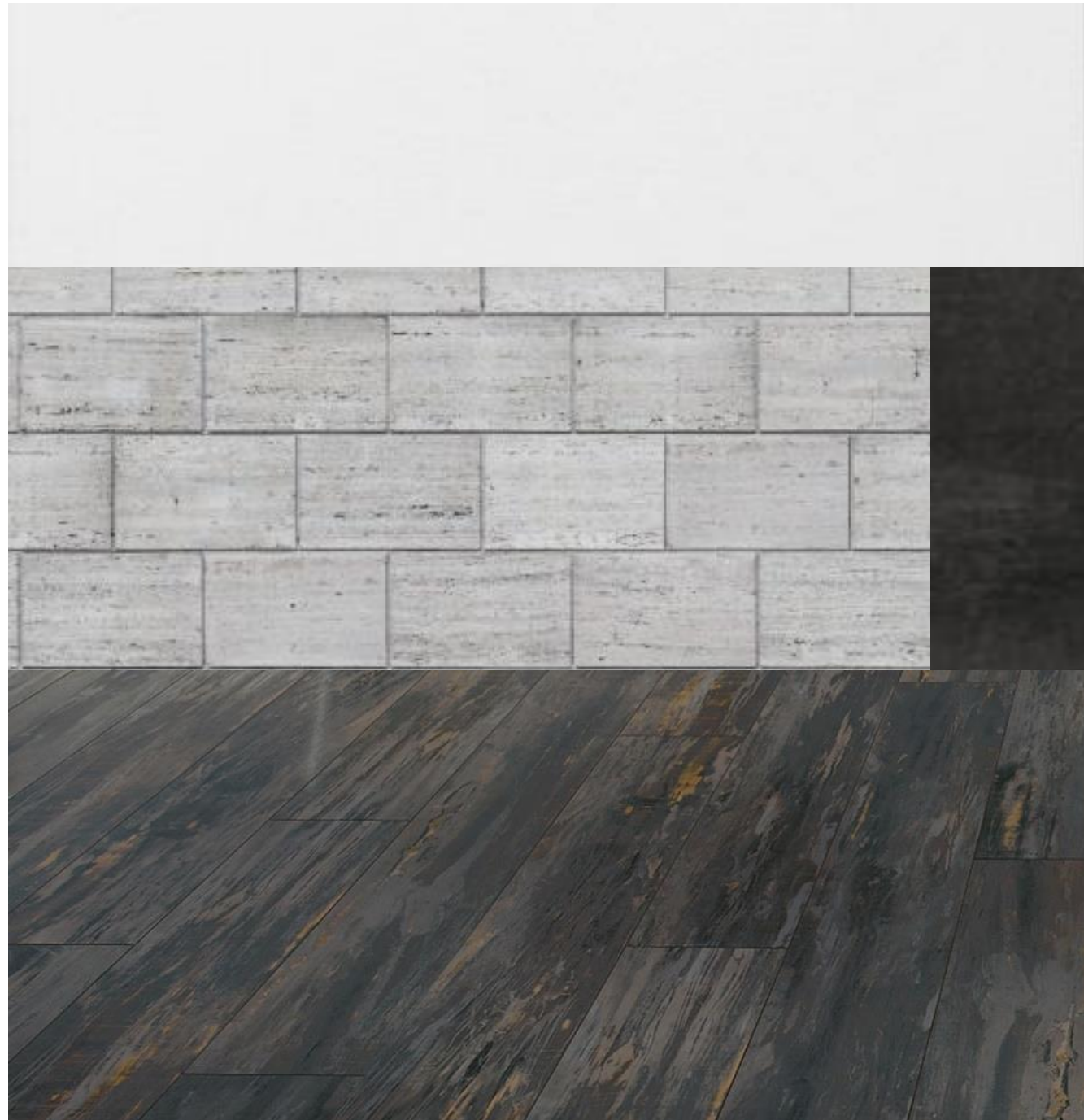
Assignment 12c

Main Circulation Perspective



Assignment 12c

Main Circulation Material Board



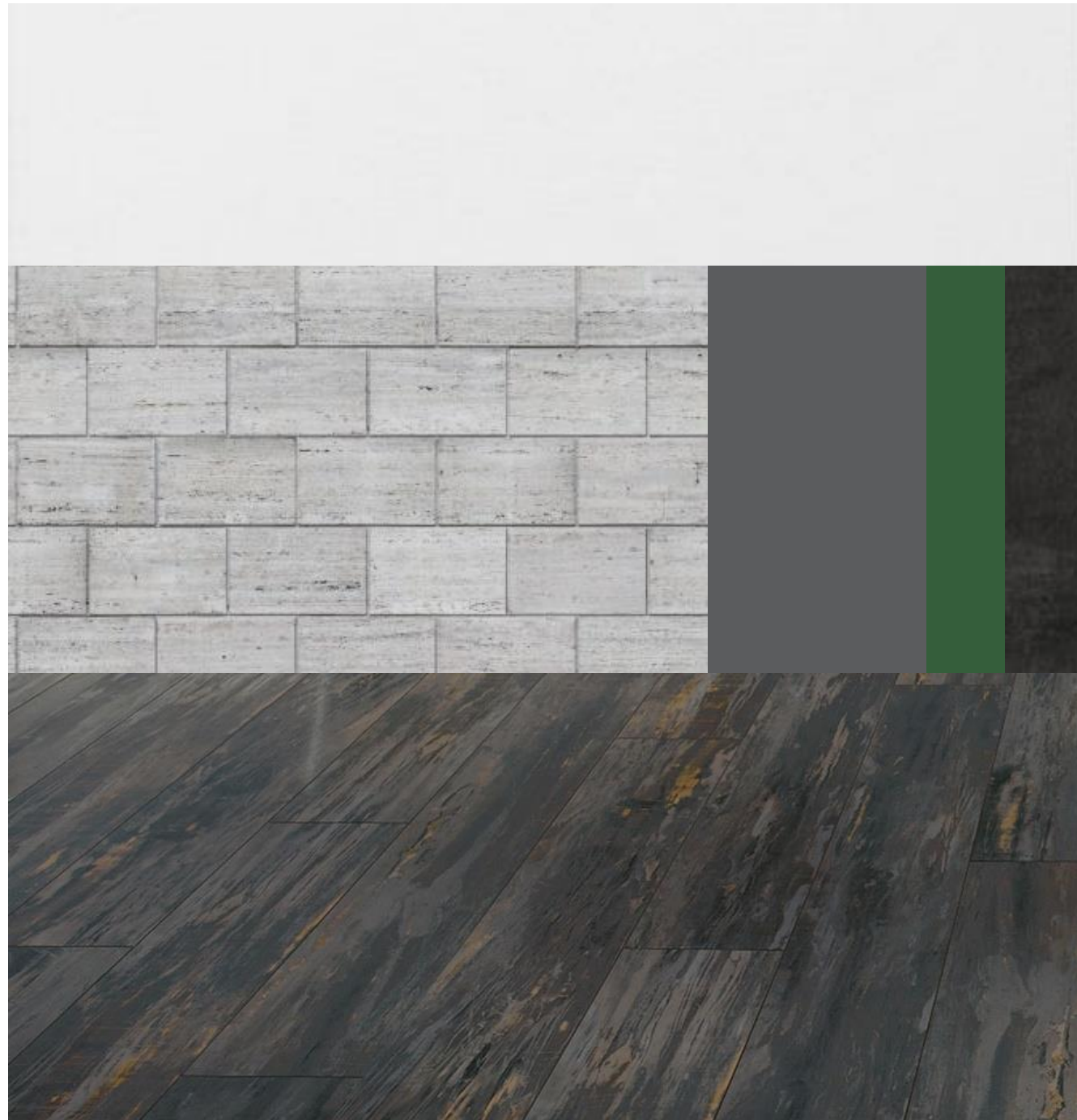
Assignment 12c

Open Work Area Perspective



Assignment 12c

Open Work Area Material Board



Assignment 12c

Concept Lounge Perspective



Assignment 12c

Concept Lounge Material Board

