



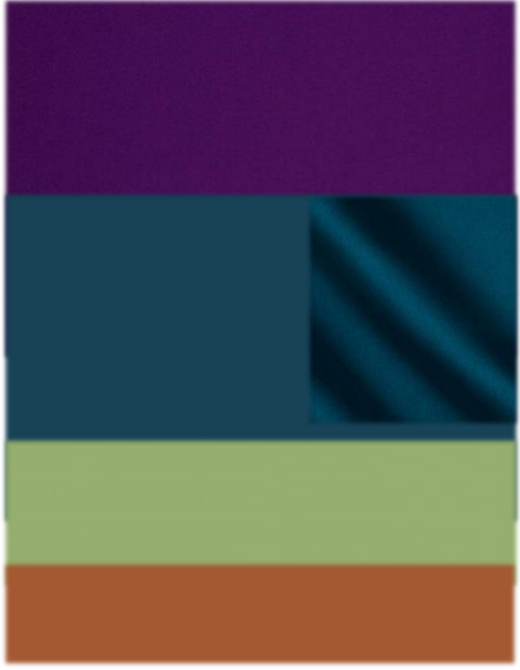
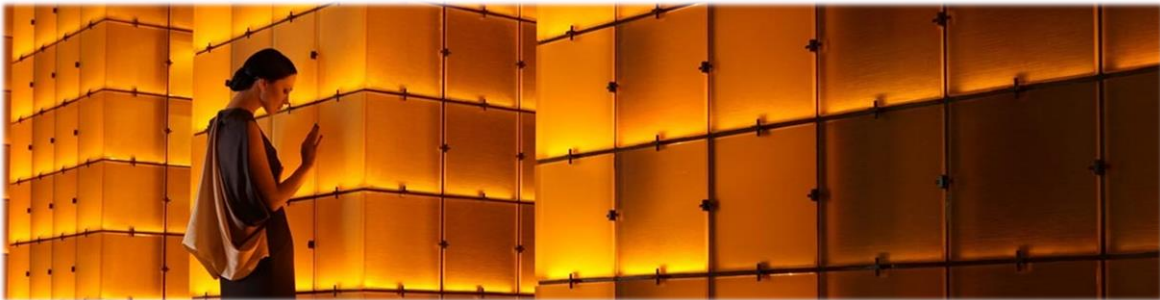
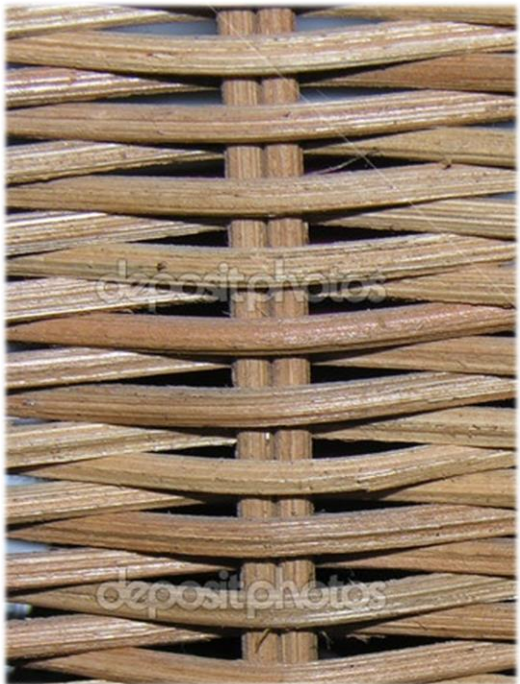
PORTFOLIO 3

CONCEPT STATEMENT

- ✚ Co-working environment
- ✚ Clean and straight lines
- ✚ Direct and deliberate transition through the space
- ✚ Vibrant color palate; promoting individual creativity
- ✚ Directed movement for maximum efficiency



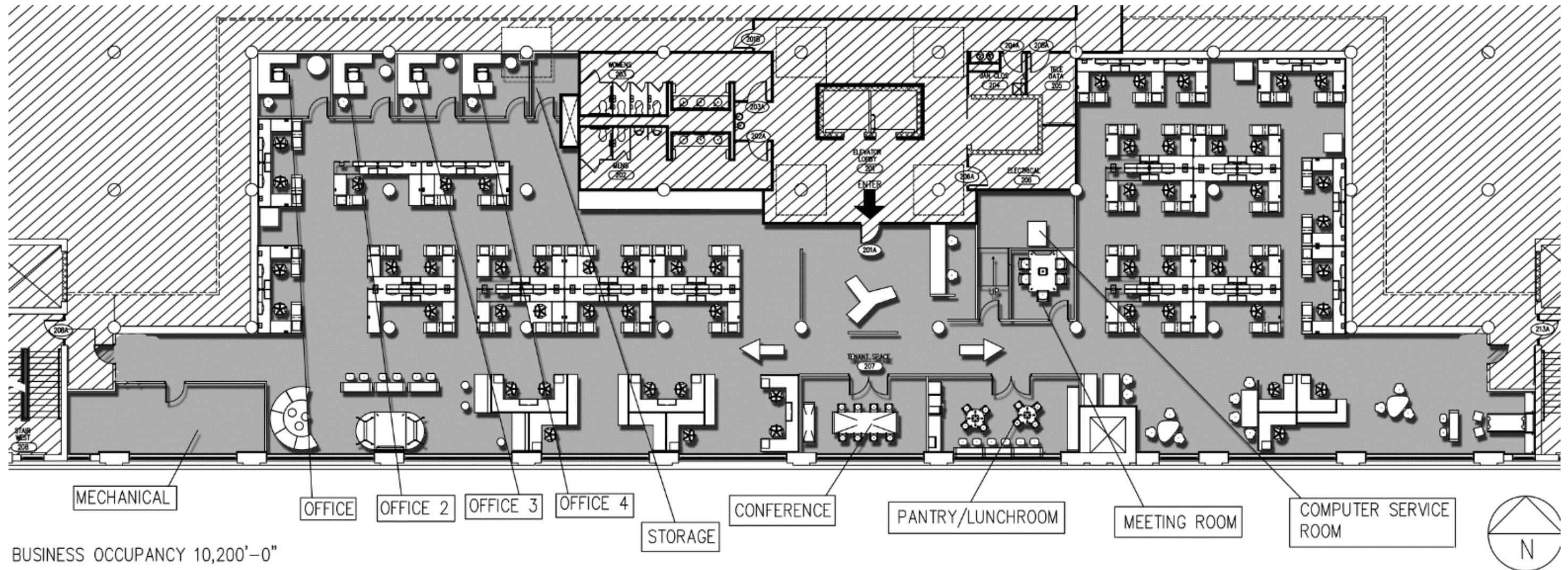
INSPIRATION BOARD



SUSTAINABILITY STRATEGIES

- ✚ The process of restoring the building is already saving energy and the environment from the demolition and then the reconstruction of the area; “Embodied energy”
- ✚ Using a daylight sensor to monitor natural light coming into the space, automatically saving 90% of energy consumption from the usage of artificial
- ✚ Energy efficient lighting for the time that daylight cannot be used and for task lighting for the employees at their desks.
- ✚ Recycled materials for the flooring and other aspects of the space including architectural detailing and some of the office furniture.

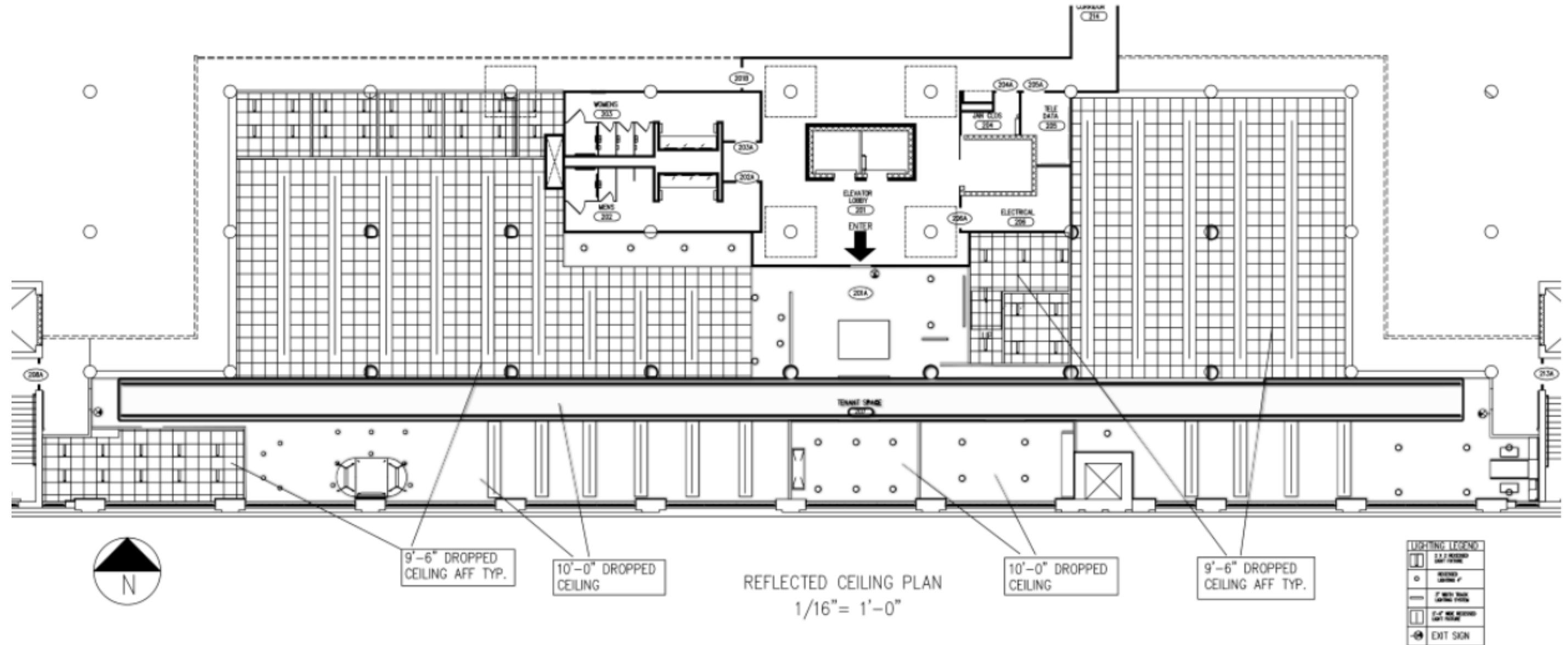
RENDERED FURNITURE PLAN



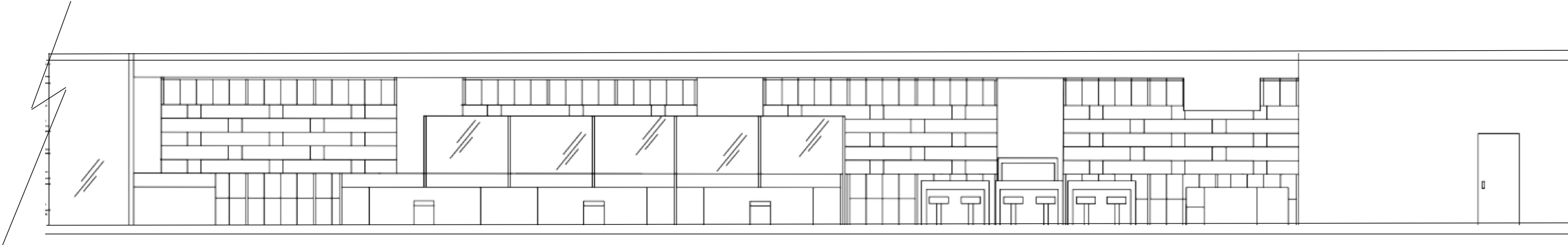
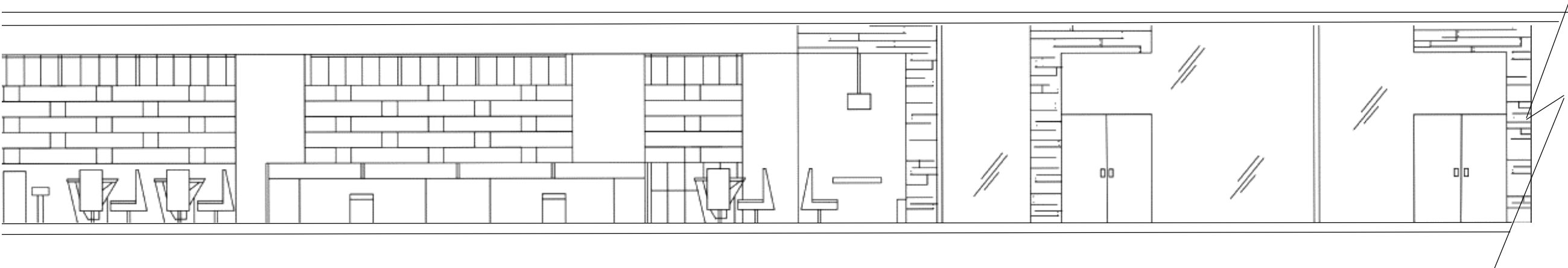
BUSINESS OCCUPANCY 10,200'-0"

FURNITURE PLAN
SCALE: 1/16"=1'-0"

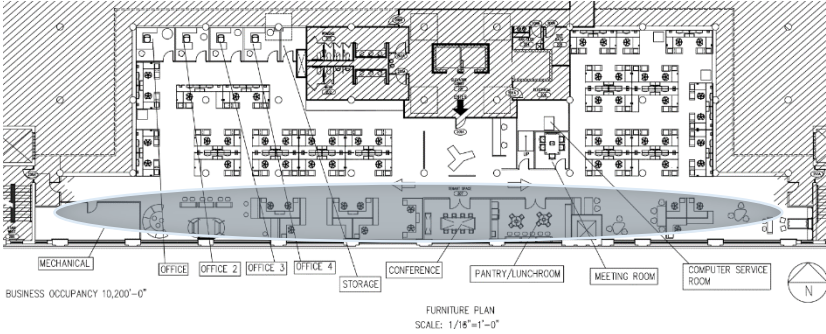
RENDERED REFLECTED CEILING PLAN



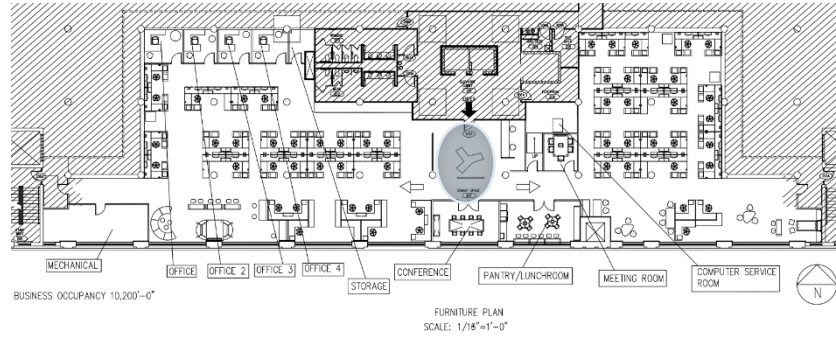
EAST-WEST WING SECTION



SCALE: 1/8" = 1'-0"

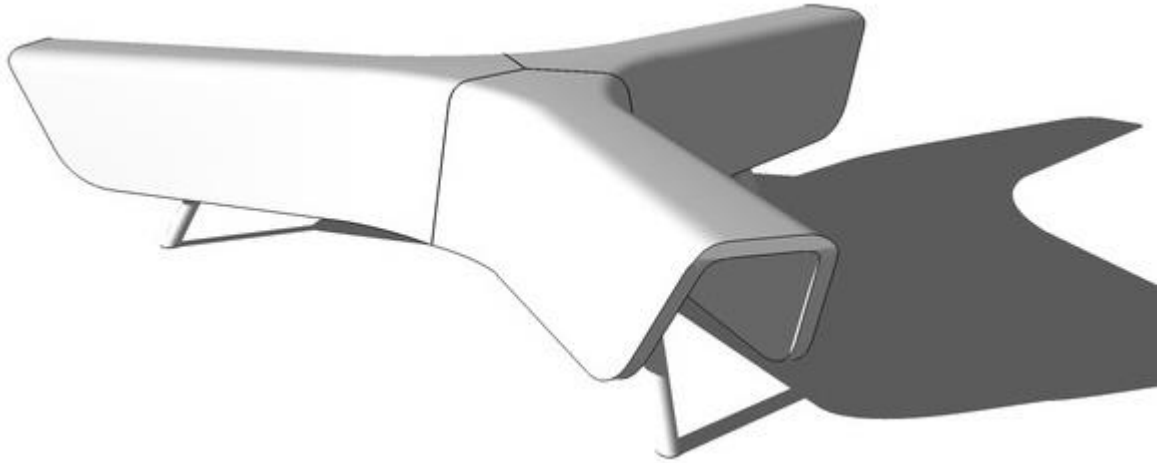


MAIN LOBBY

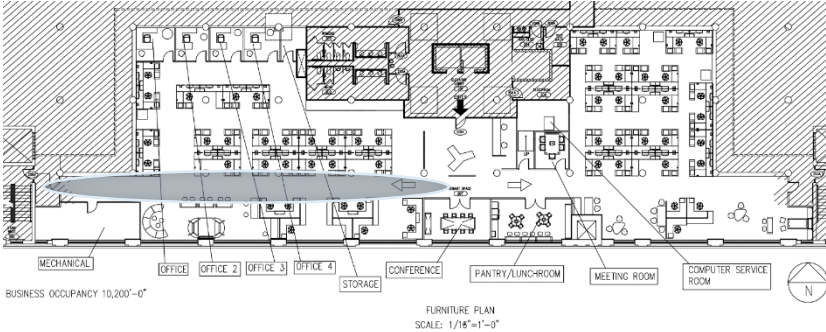


ASHLEY SOWA
IDSN 3600
PORTFOLIO 3

FURNITURE AND FINISHES

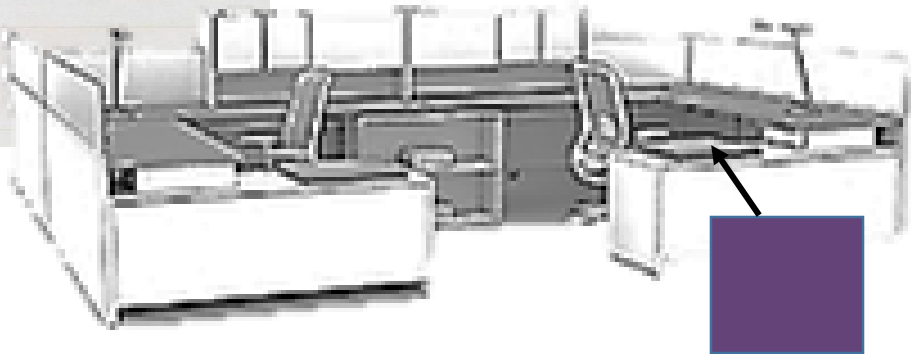
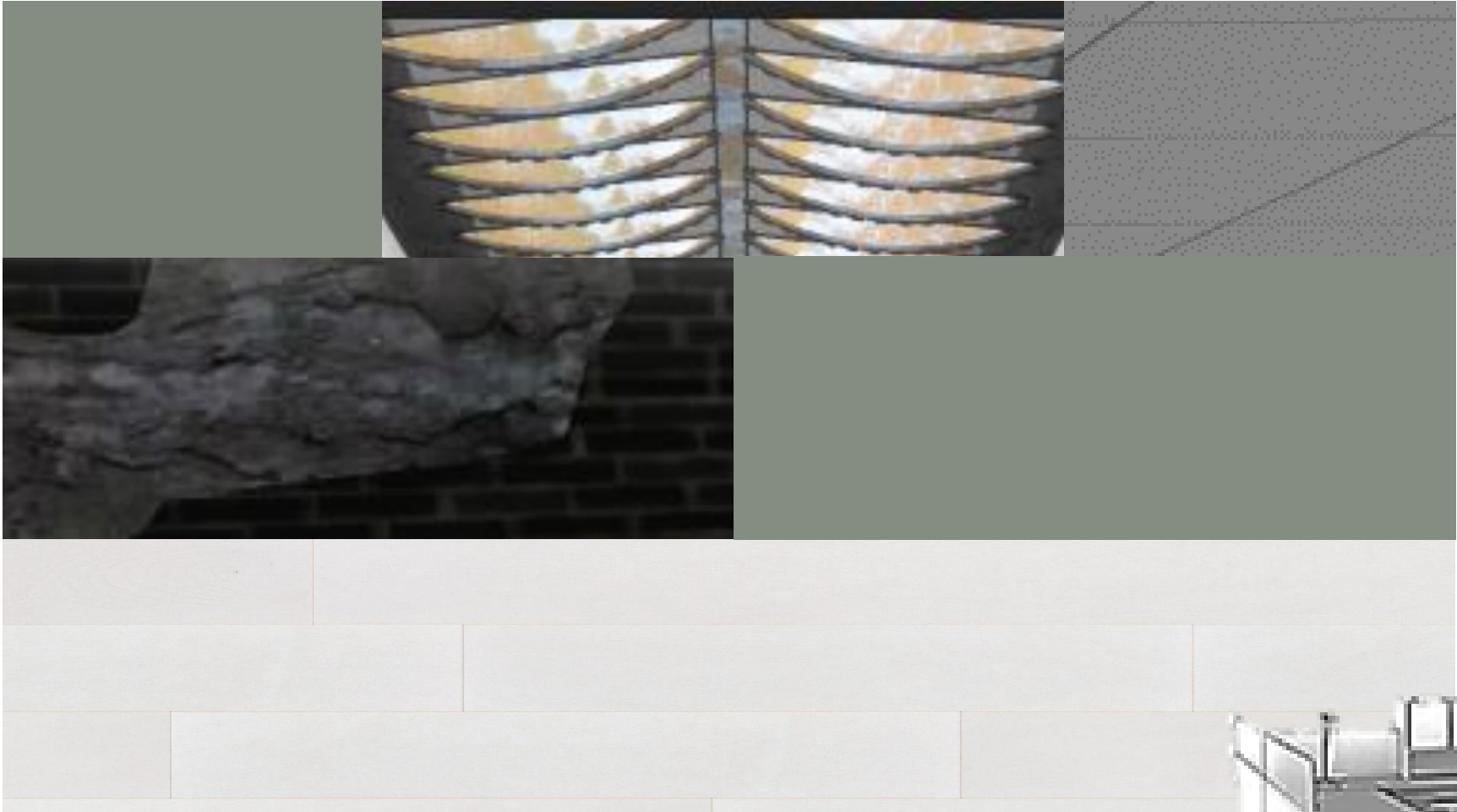


MAIN CIRCULATION

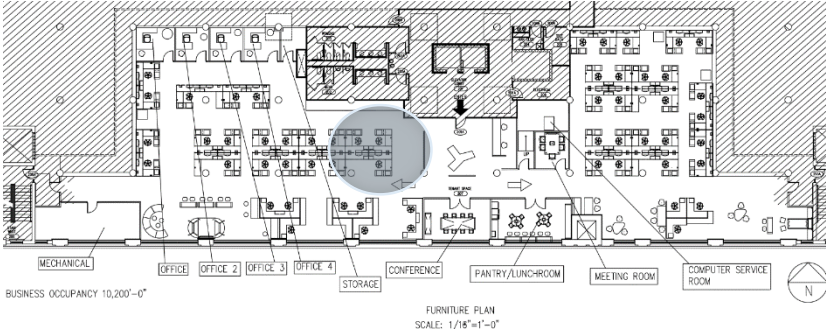


ASHLEY SOWA
IDSN 3600
PORTFOLIO 3

FURNITURE AND FINISHES

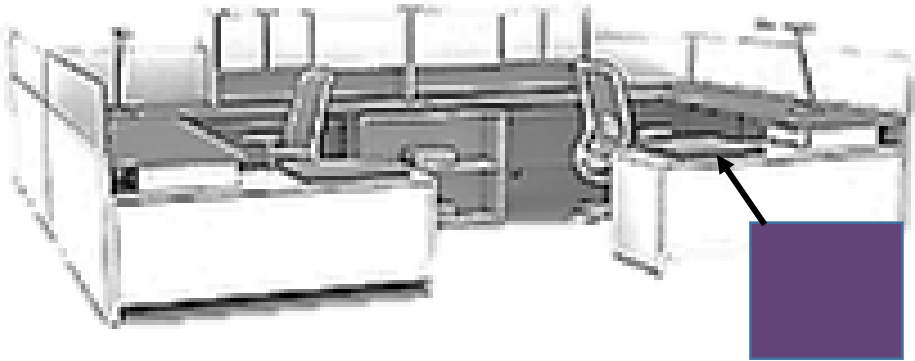
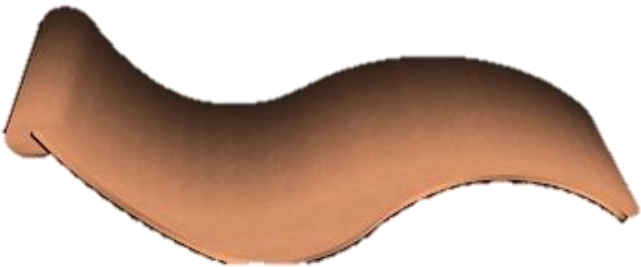
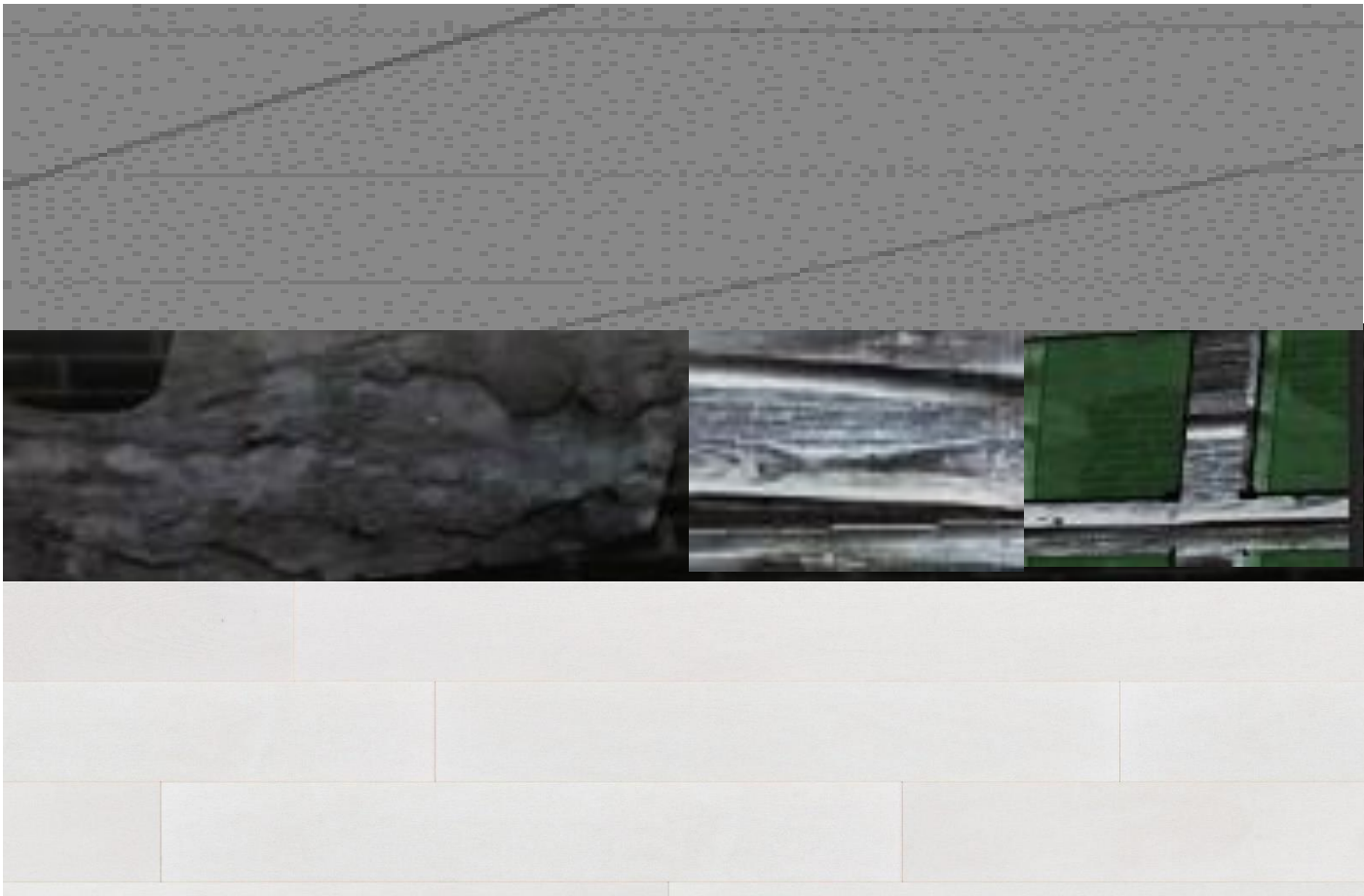


OPEN WORK AREA

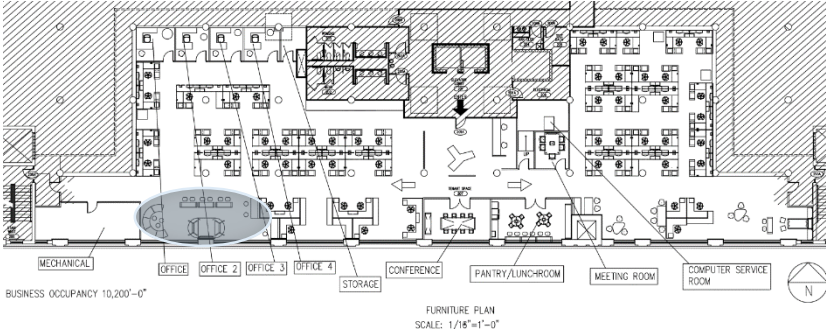


ASHLEY SOWA
IDSN 3600
PORTFOLIO 3

FURNITURE AND FINISHES



LOUNGE



ASHLEY SOWA
IDSN 3600
PORTFOLIO 3

FURNITURE AND FINISHES

