



PORTFOLIO 3  
IDSN 3600  
NICOLE THOMAS



# CONCEPT STATEMENT



As a society, we find ourselves spending more time using technology, and less time is spent outdoors. Since the workers in this space are going to be spending a lot of their time inside, the concept lounge has views out of the large windows that will give them a sense of being outside, with natural light, and a view of the canal. Along with the earthy colors around the space, and wood floors throughout the open floor plan.

- Earthy Touches
- Environmentally Friendly
- Pop of Color
- Open floor plan layout
- Reoccurring abstract prints throughout the space



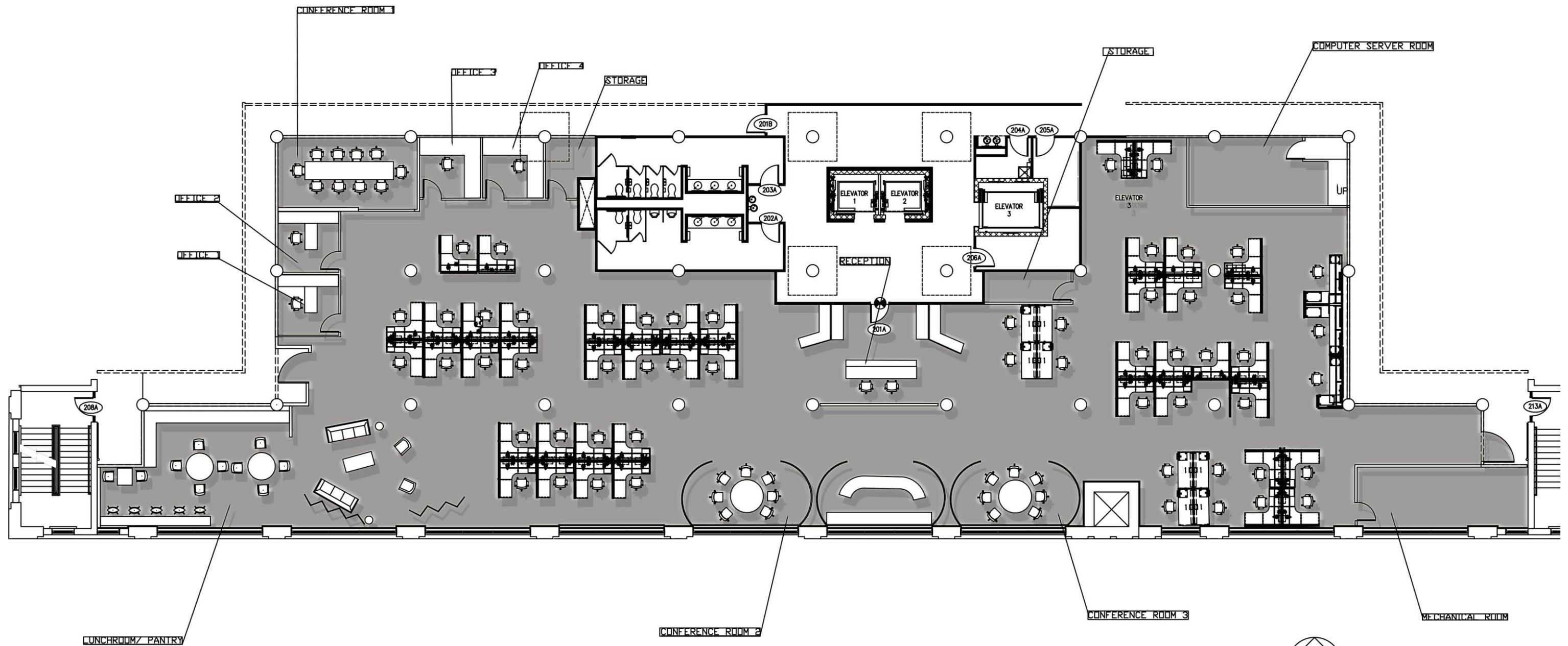
# SUSTAINABILITY STATEMENT



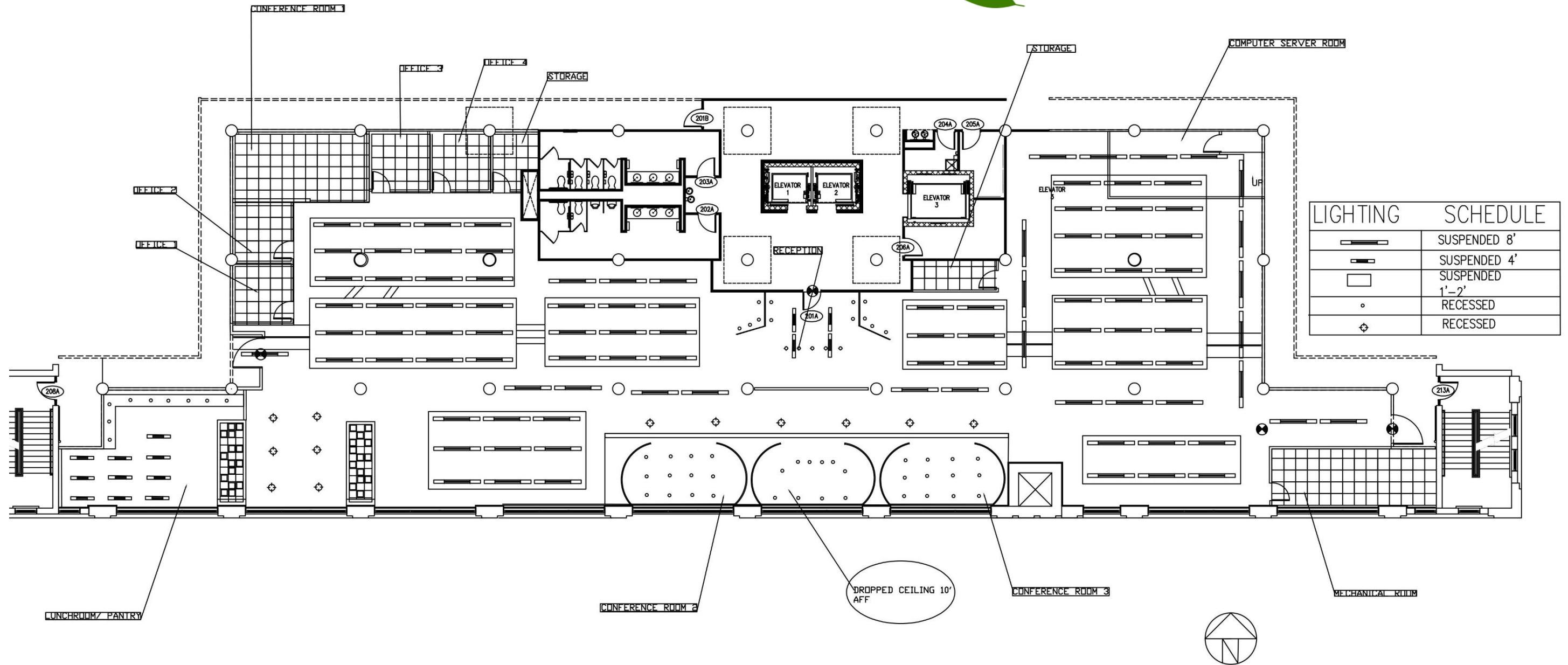
My goal for this space is to use as many hand crafted products, and environmentally friendly products as possible. The acoustical design above the suspended light fixtures in my workstation areas, are made up of recycled cans that are stuffed with recycled foam. All of the lights are LED and all are on timers and sensors to conserve energy. Since this is an existing building, there are not as many materials that need to go into the process, unlike if it were a new building going up.



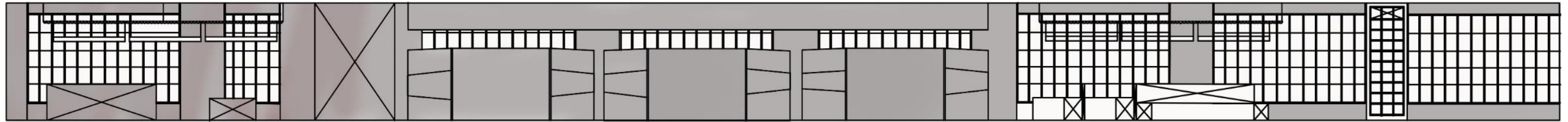
# RENDERED FLOOR PLAN



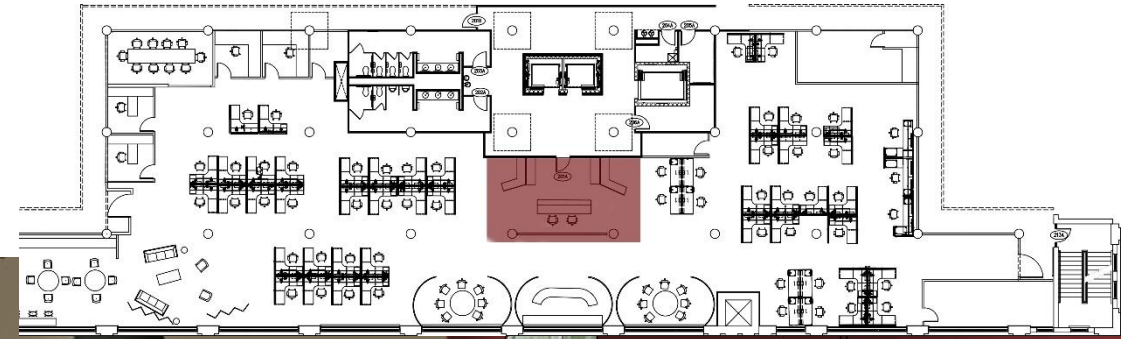
# REFLECTED CEILING PLAN



EAST- WEST SECTION



# RECEPTION



# RECEPTION FURNITURE AND FINISHINGS



Zuo Modern Copper Ceiling Lamp

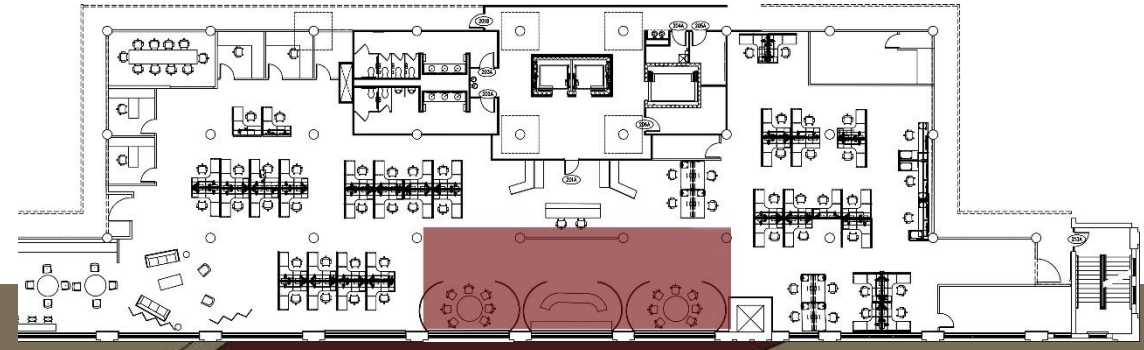
3 Form Glass Design

Herman Miller Eames Aluminum Group Management Chair



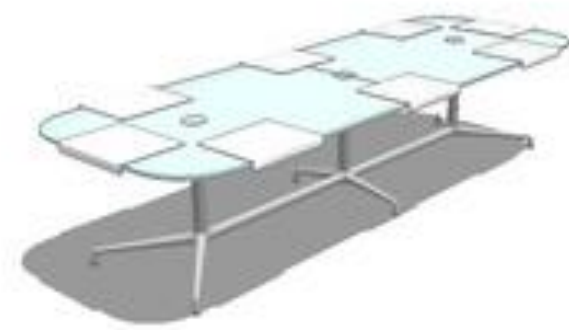


# MAIN CORRIDOR

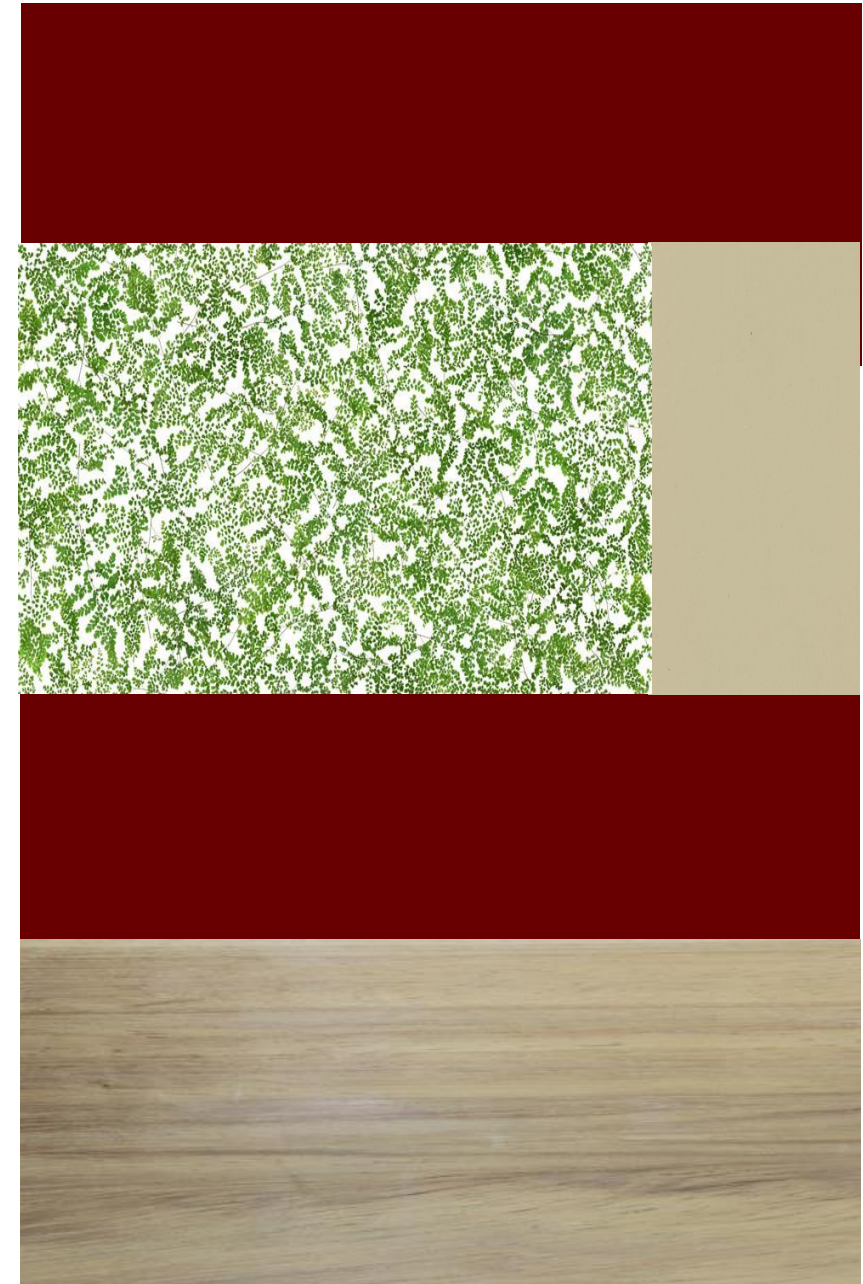


# MAIN CORRIDOR FURNITURE AND FINISHES

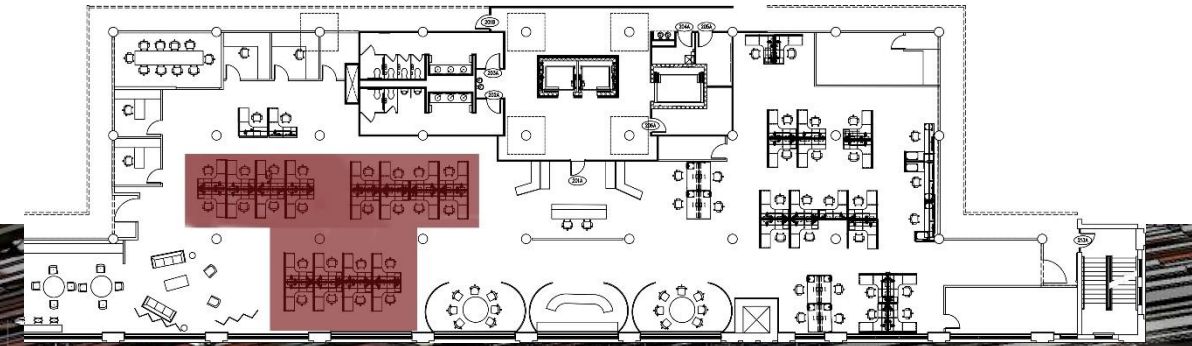
Coalesse Conference Table



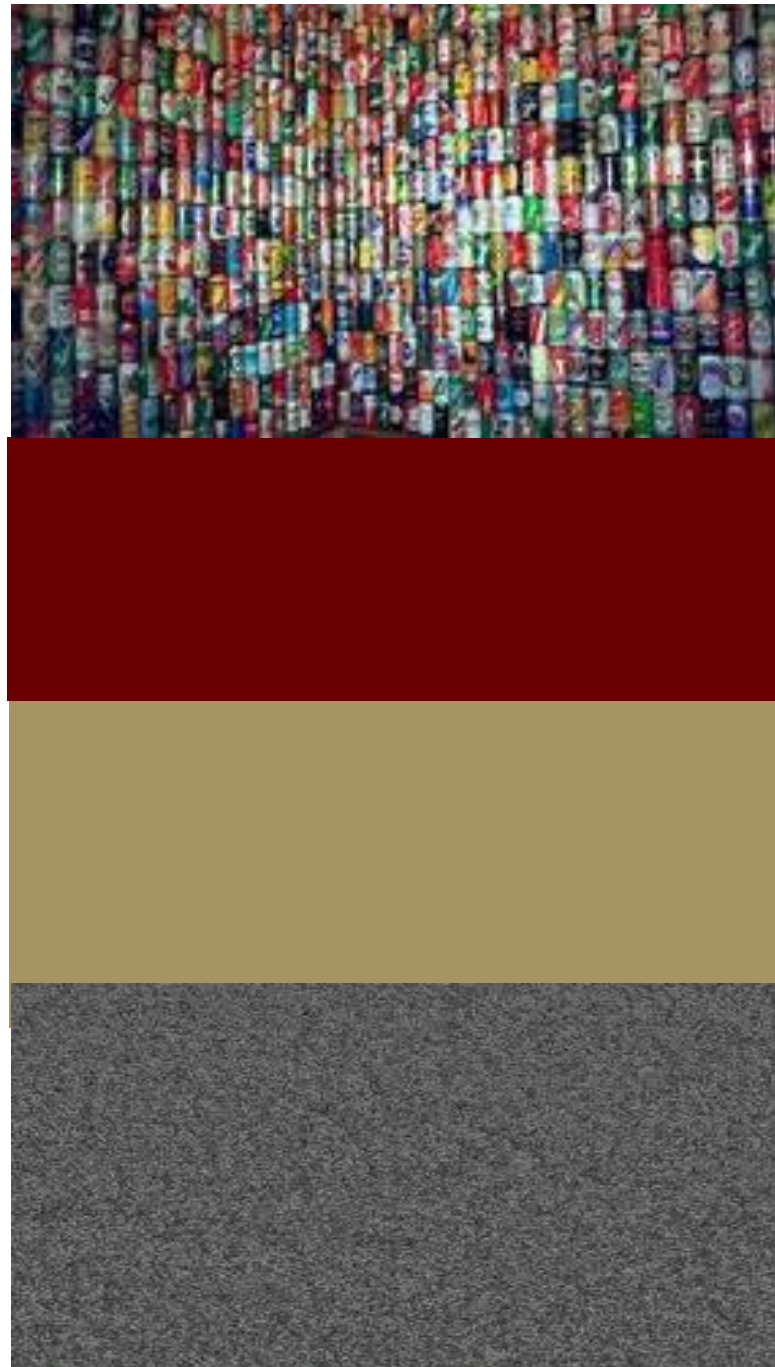
Herman Miller Eames Aluminum  
Group Management Chair



# MAIN WORKSTATIONS



# MAIN WORKSTATION FURNITURE AND FINISHES



Herman Miller Work Stations

Zumtobel Light Fixtures



Herman Miller Mirra Office Chair

# CONCEPT LOUNGE



# CONCEPT LOUNGE FURNITURE AND FINISHES



Herman Miller Coconut chair

Herman Miller Noguchi Table

Herman Miller Eames Sofa Compact









