


The Senior Living Condominium

Jacinta Cofield
Portfolio II
Interior Design III: Systems
Professor Charles Gustina



THE PROGRAM

Target Market

- ✓ Active, affluent retirees or veterans
- ✓ Adult children who assist in living options for their senior parents

Space Requirements and Square Footage

- ★ Patio
- ✓ Living Room 300 sq. ft.
- ✓ Dining Room 200 sq. ft.
- ✓ Kitchen 90 sq. ft.
- ✓ Home Theater 250 sq. ft.
- ✓ Master Bedroom 420 sq. ft.
- ✓ Master Bath 60 sq. ft.
- ✓ Master Bedroom 420 sq. ft.
- ✓ Master Bath 60 sq. ft.
- ✓ Powder Room 50 sq. ft.
- ✓ Laundry Room 200 sq. ft.
- ✓ Foyer 40 sq. ft.

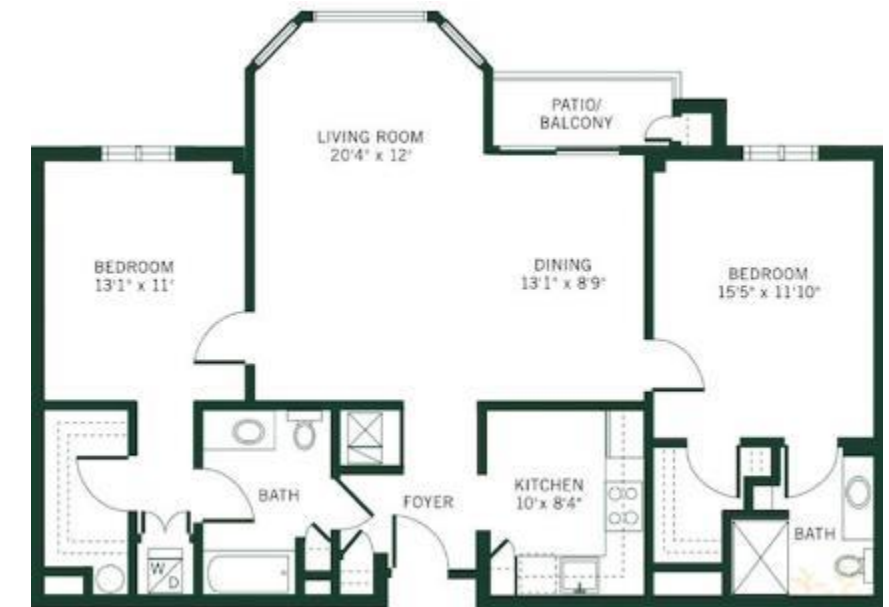
Total Square Footage= 2510 sq. ft.

- ★ Patio excluded



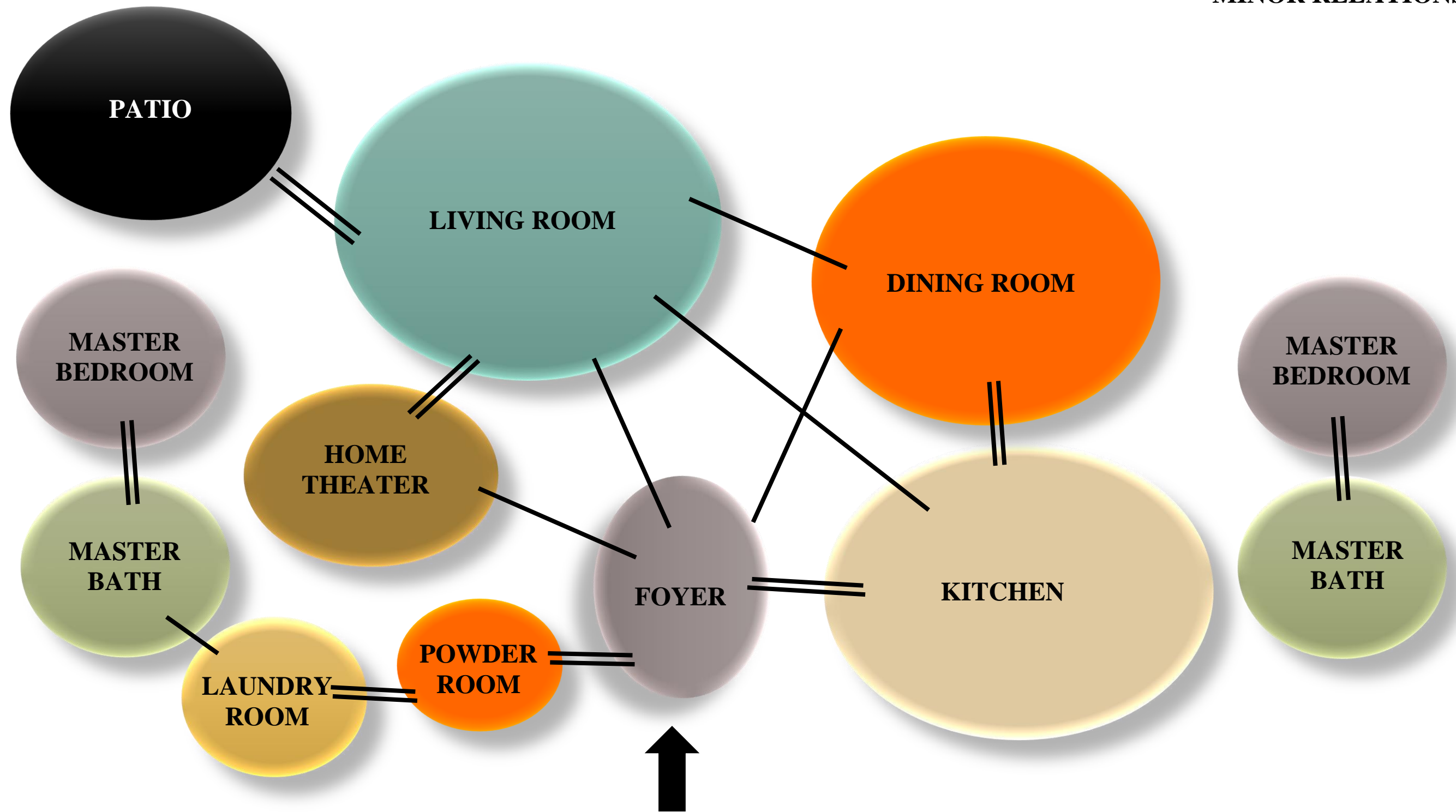
Space Reasoning

- ✓ When planning, I gathered information made by comparison at [The Forest at Duke](#), located in Durham, North Carolina. I was inspired by the Dogwood Floor Plan, a two-bedroom apartment.

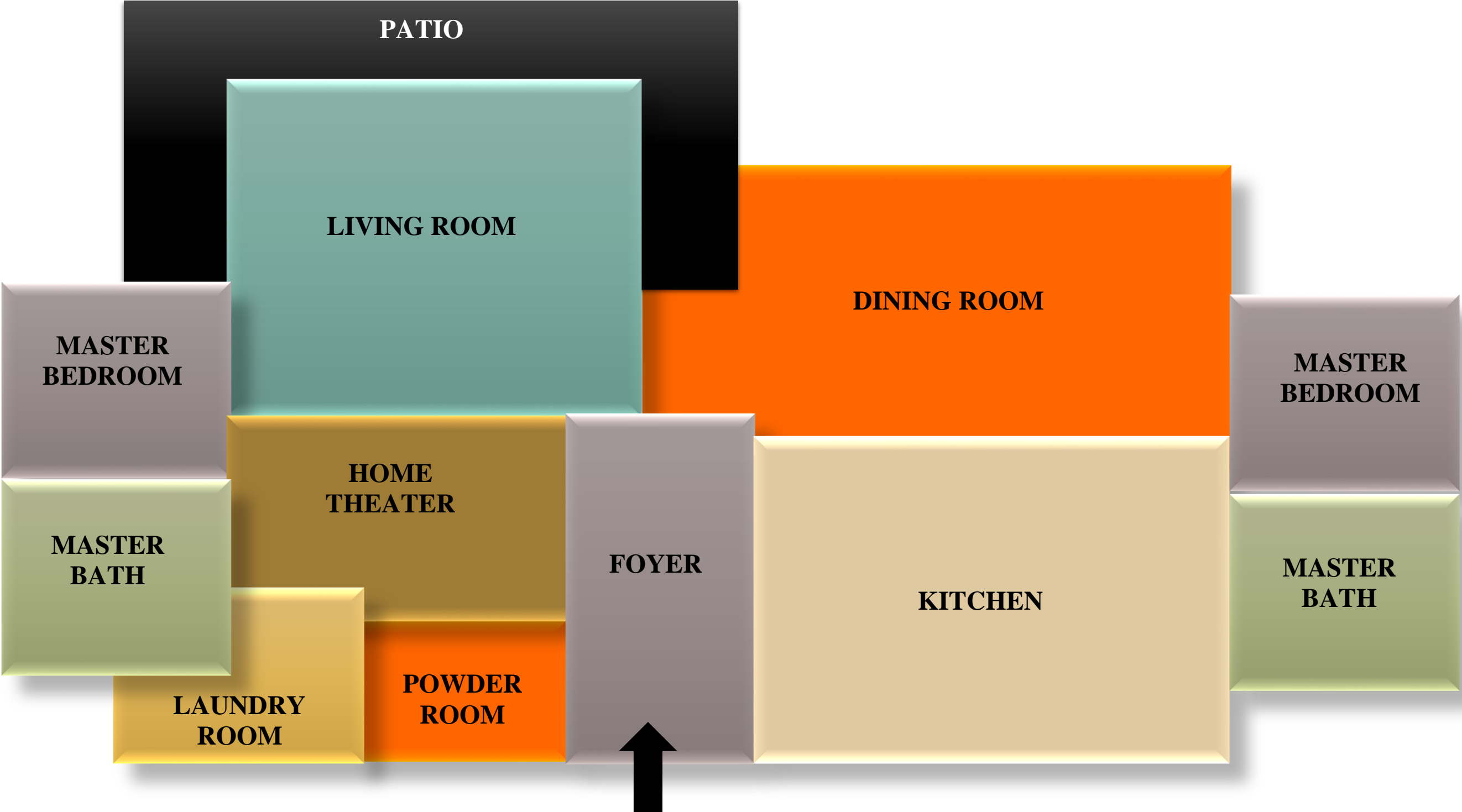


BUBBLE SCHEMATIC NO.1

==== = MAJOR RELATIONSHIP
—— = MINOR RELATIONSHIP

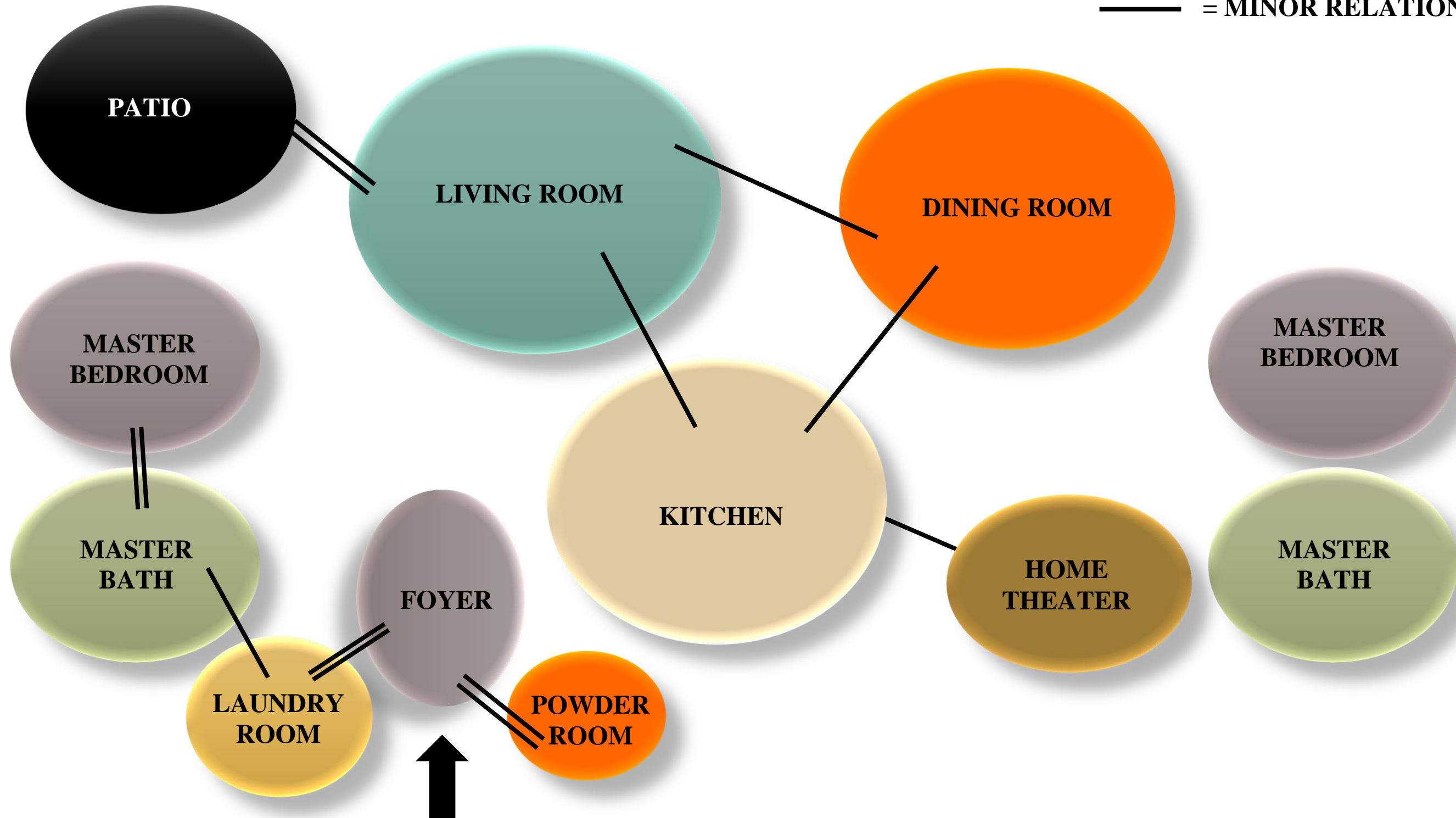


BLOCKING SCHEMATIC NO.1

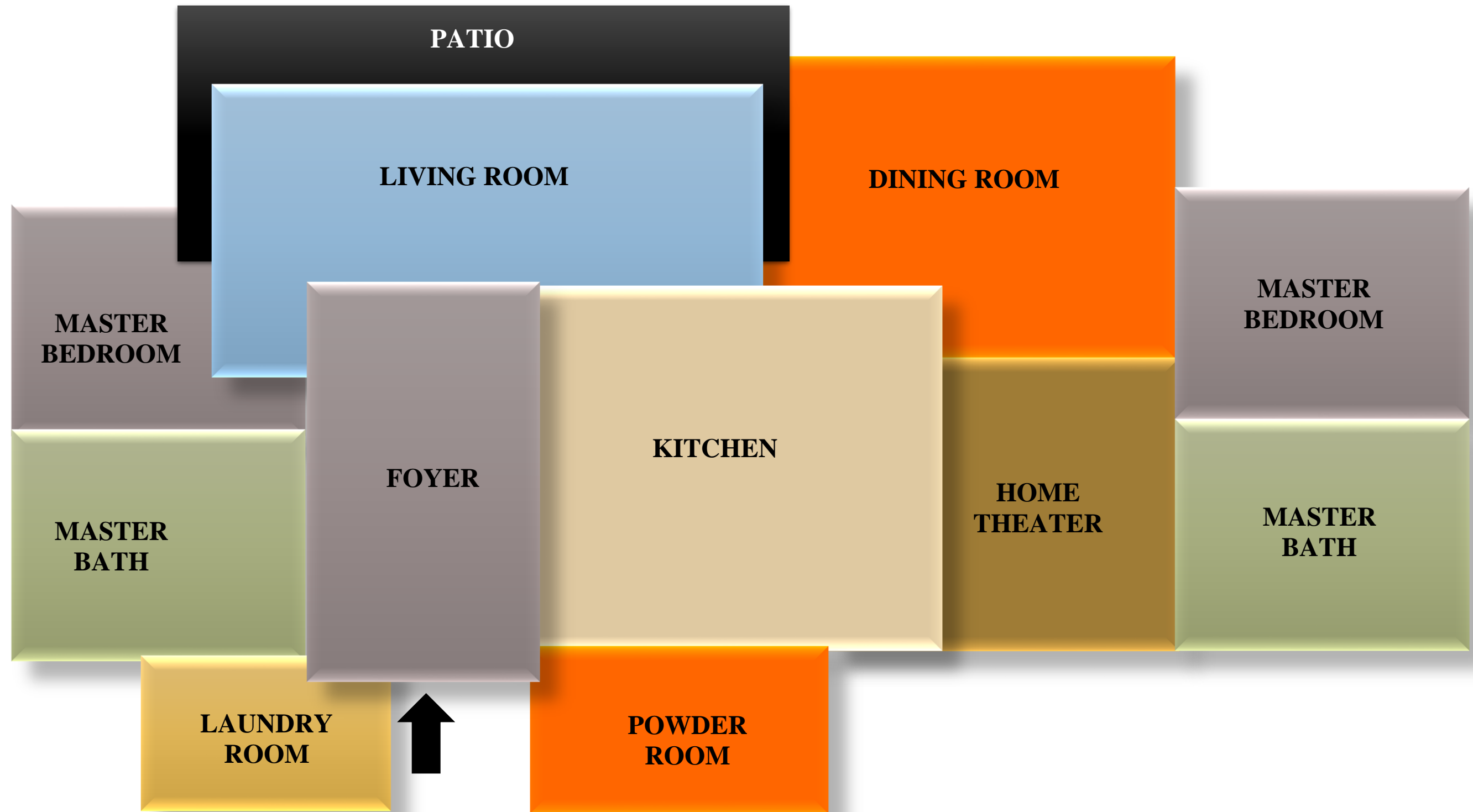


BUBBLE SCHEMATIC NO. 2

≡ = MAJOR RELATIONSHIP
— = MINOR RELATIONSHIP



BLOCKING SCHEMATIC NO. 2

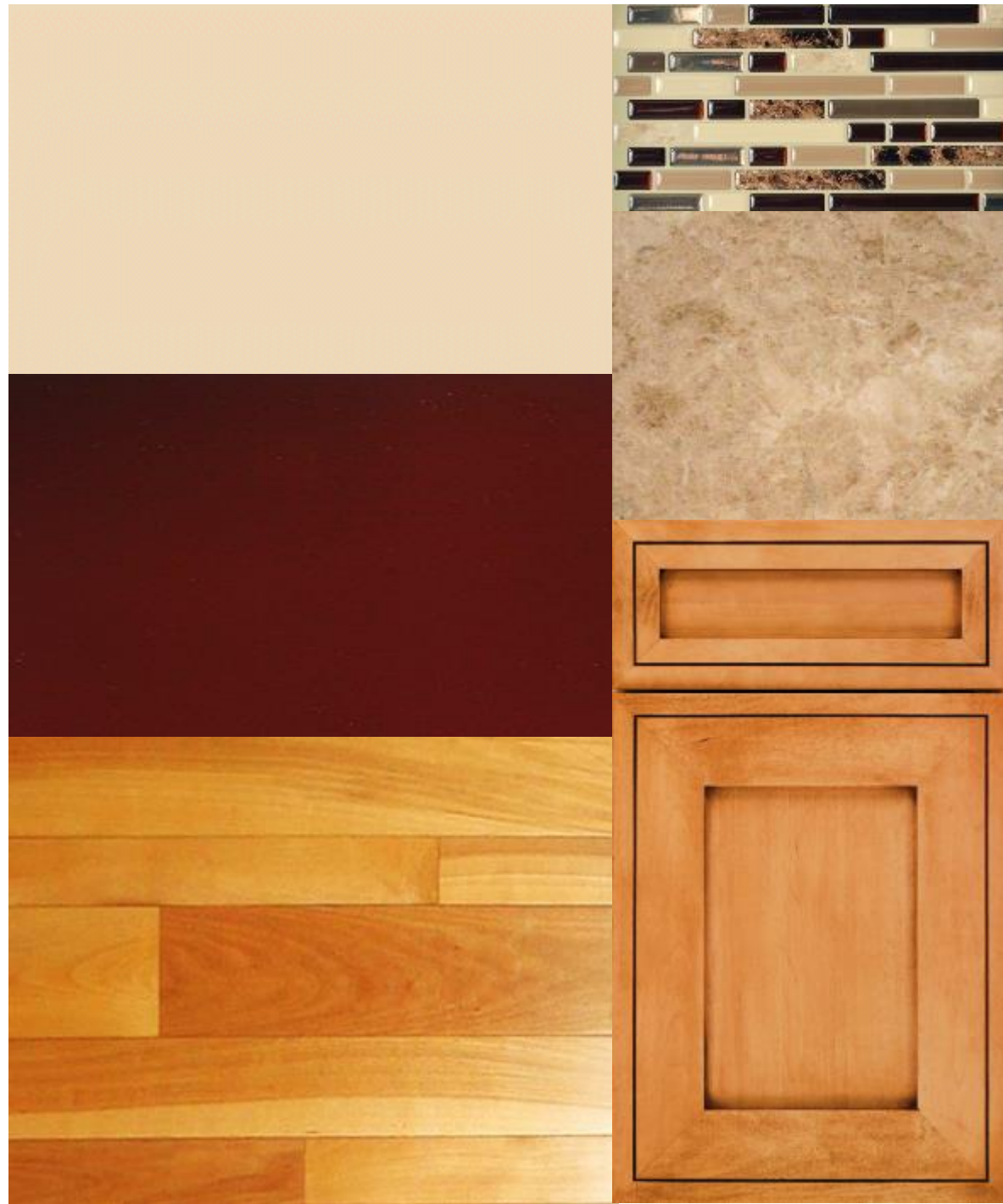


INSPIRATION



ARCHITECTURAL FINISHES

KITCHEN OPTION 1



BATHROOM OPTION 1

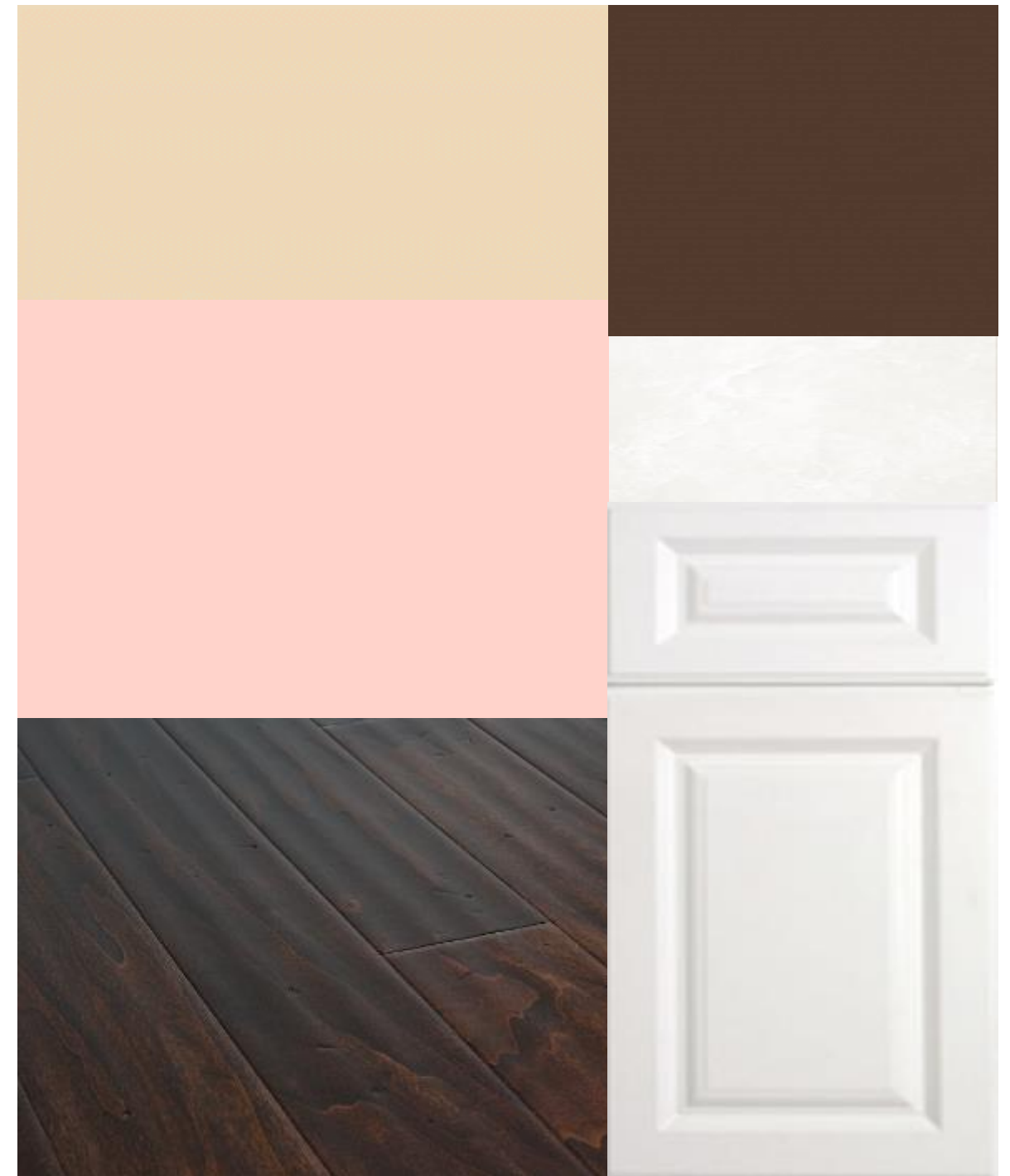


ARCHITECTURAL FINISHES

KITCHEN OPTION 2



BATHROOM OPTION 2



ARCHITECTURAL FINISHES

DINING ROOM OPTION 1

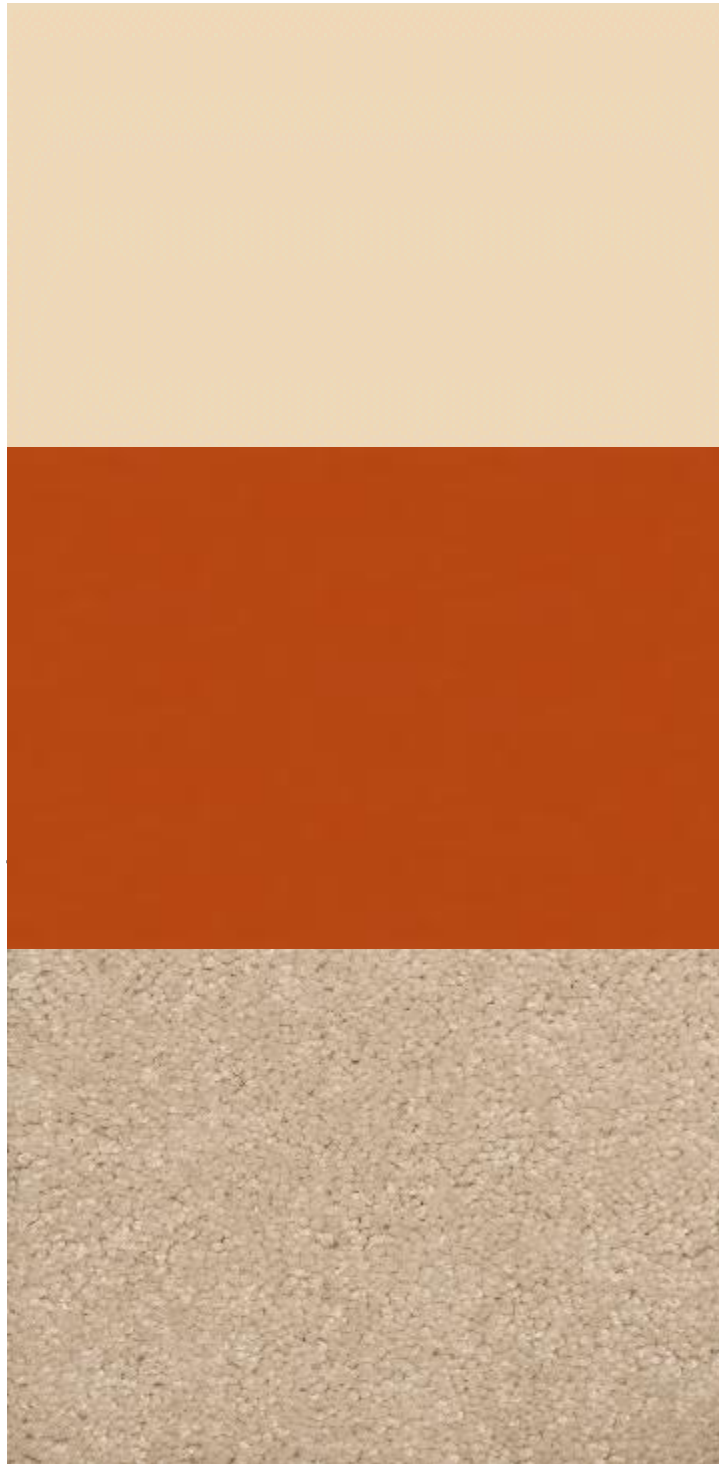


LIVING ROOM OPTION 1



ARCHITECTURAL FINISHES

DINING ROOM OPTION 2



LIVING ROOM OPTION 2

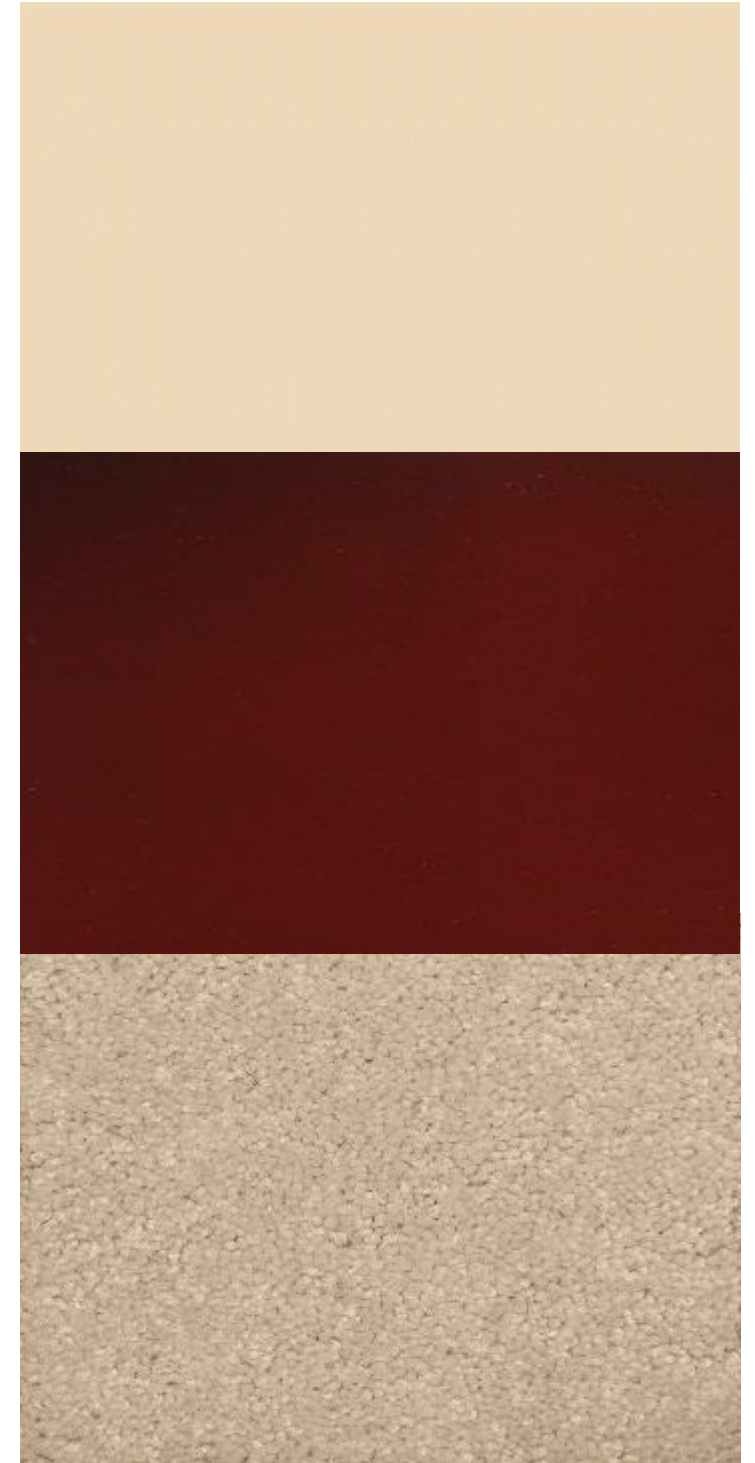


ARCHITECTURAL FINISHES

BEDROOM
OPTION 1



THEATER ROOM
OPTION 1

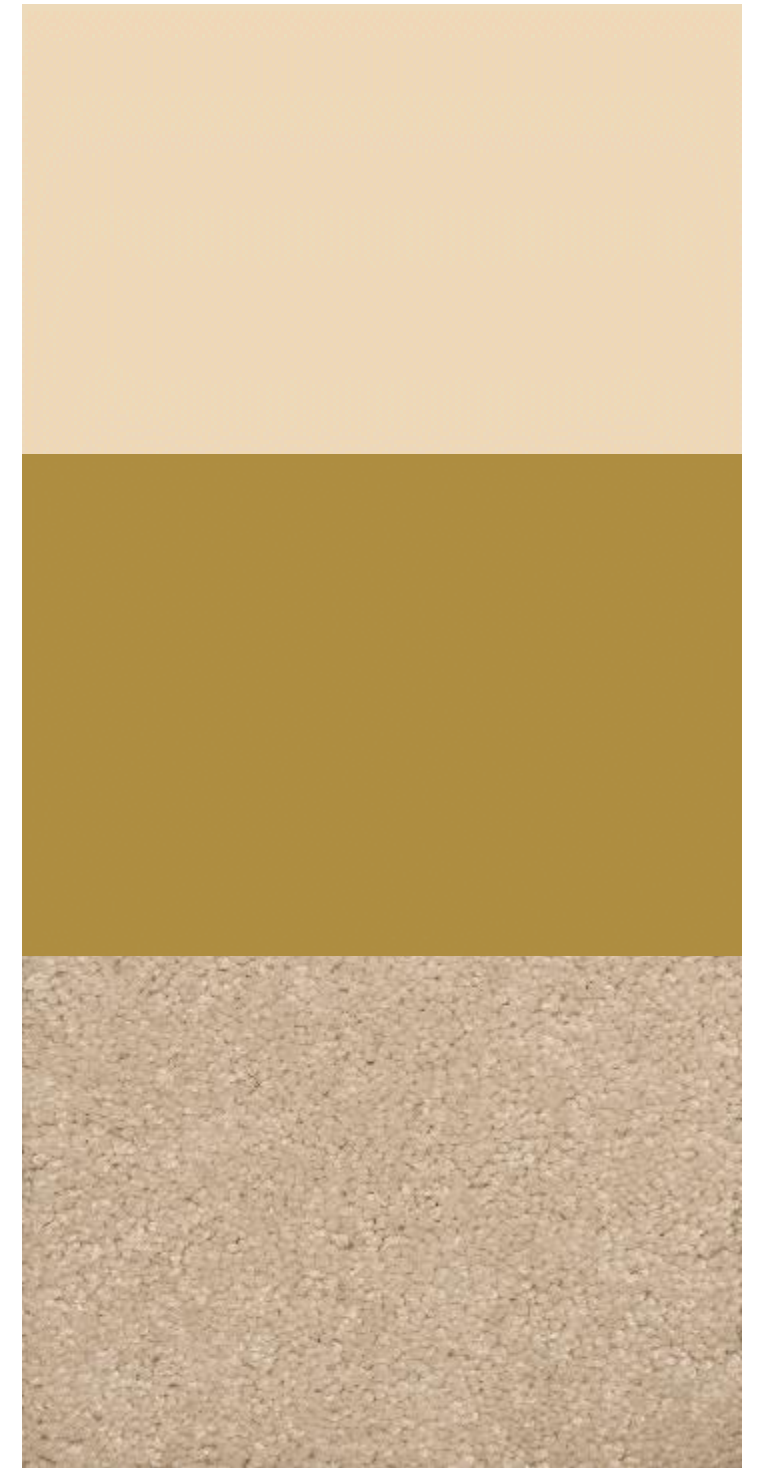


ARCHITECTURAL FINISHES

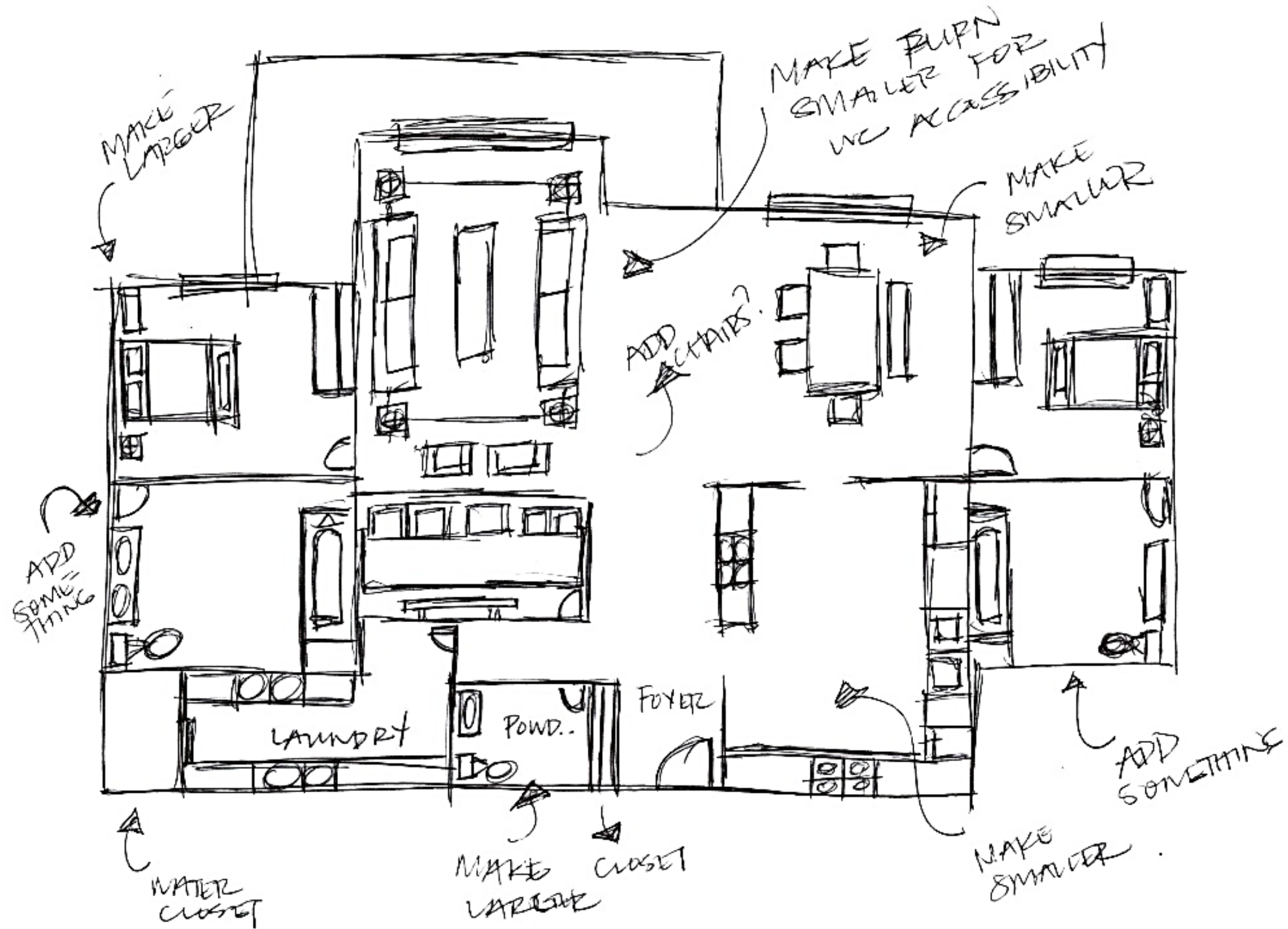
BEDROOM OPTION 2



THEATER ROOM OPTION 2



UNIT FLOOR PLAN SKETCH NO. 1
(NOT TO SCALE)

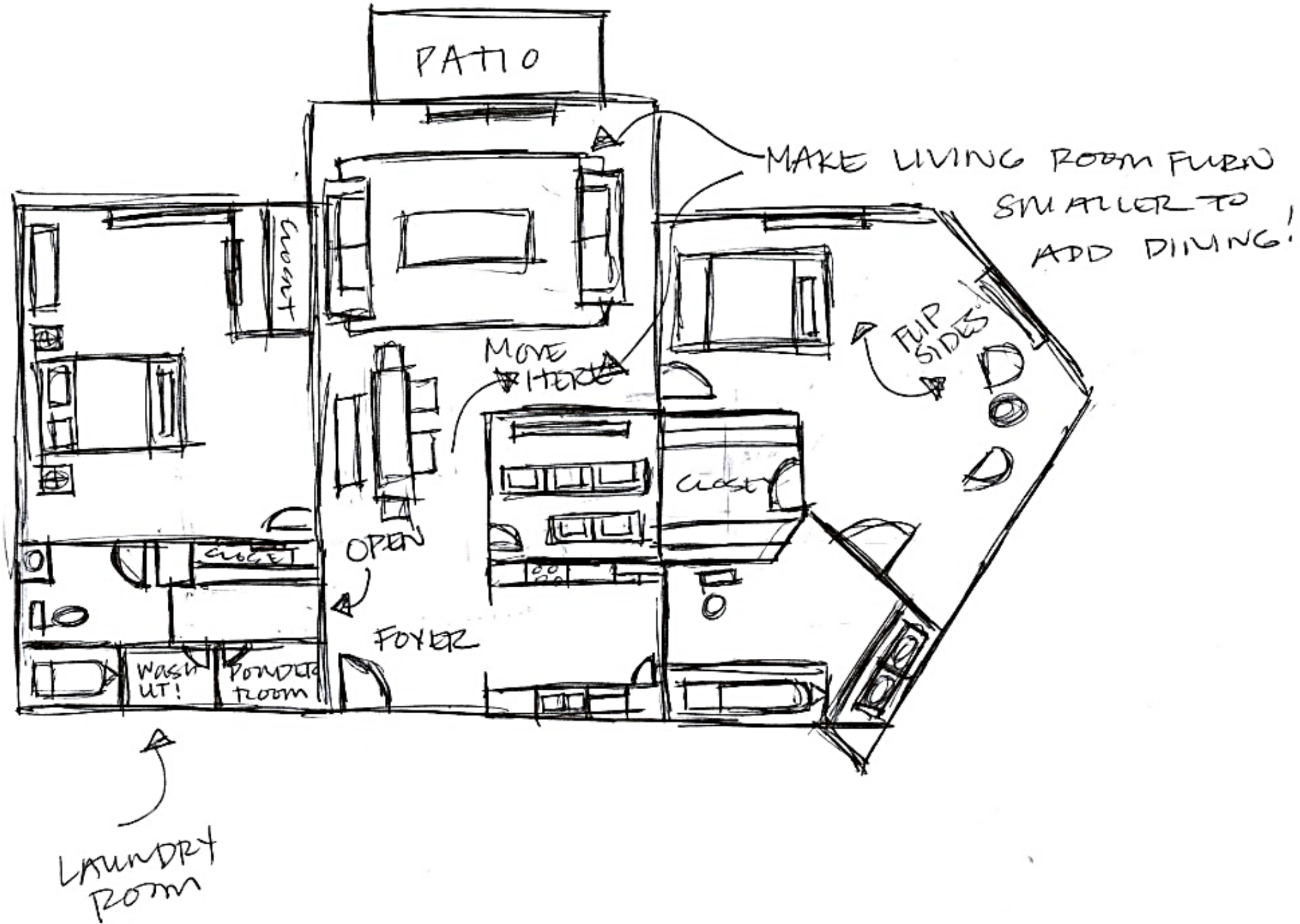


UNIT FLOOR PLAN SKETCH NO. 2
(NOT TO SCALE)

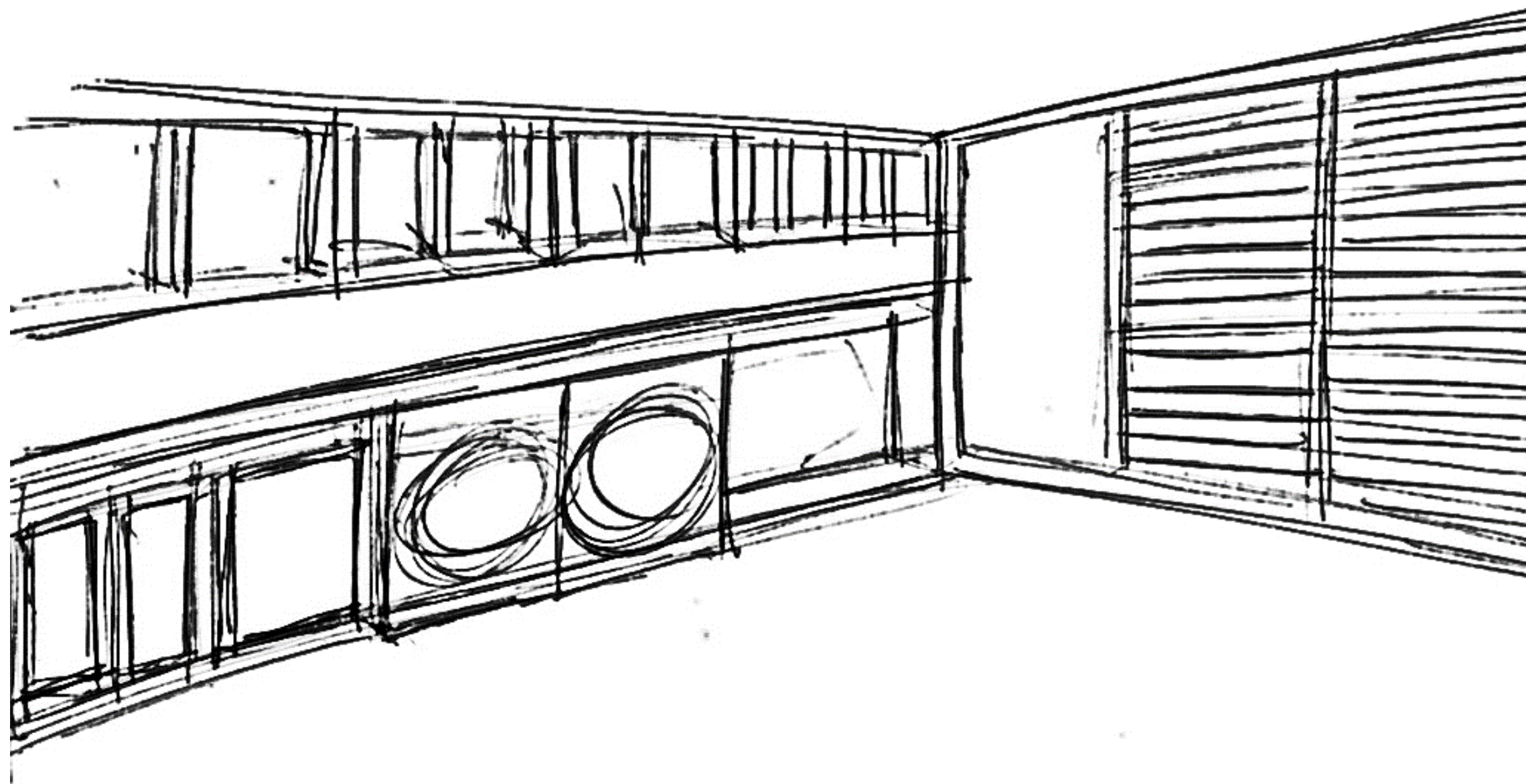


UNIT FLOOR PLAN SKETCH NO. 3
(NOT TO SCALE)

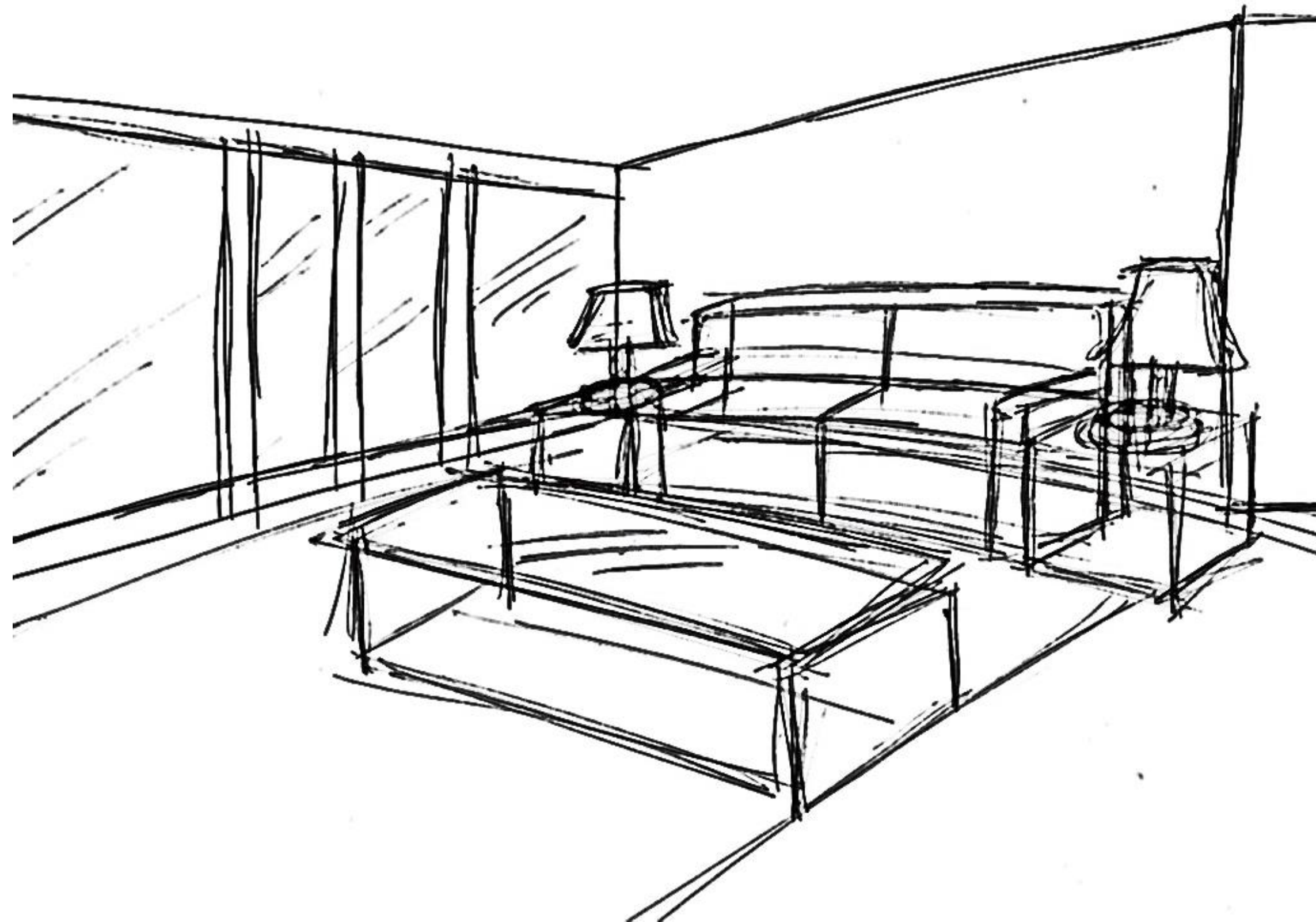
FIX TO SCALE!
AND ACCESSIBILITY



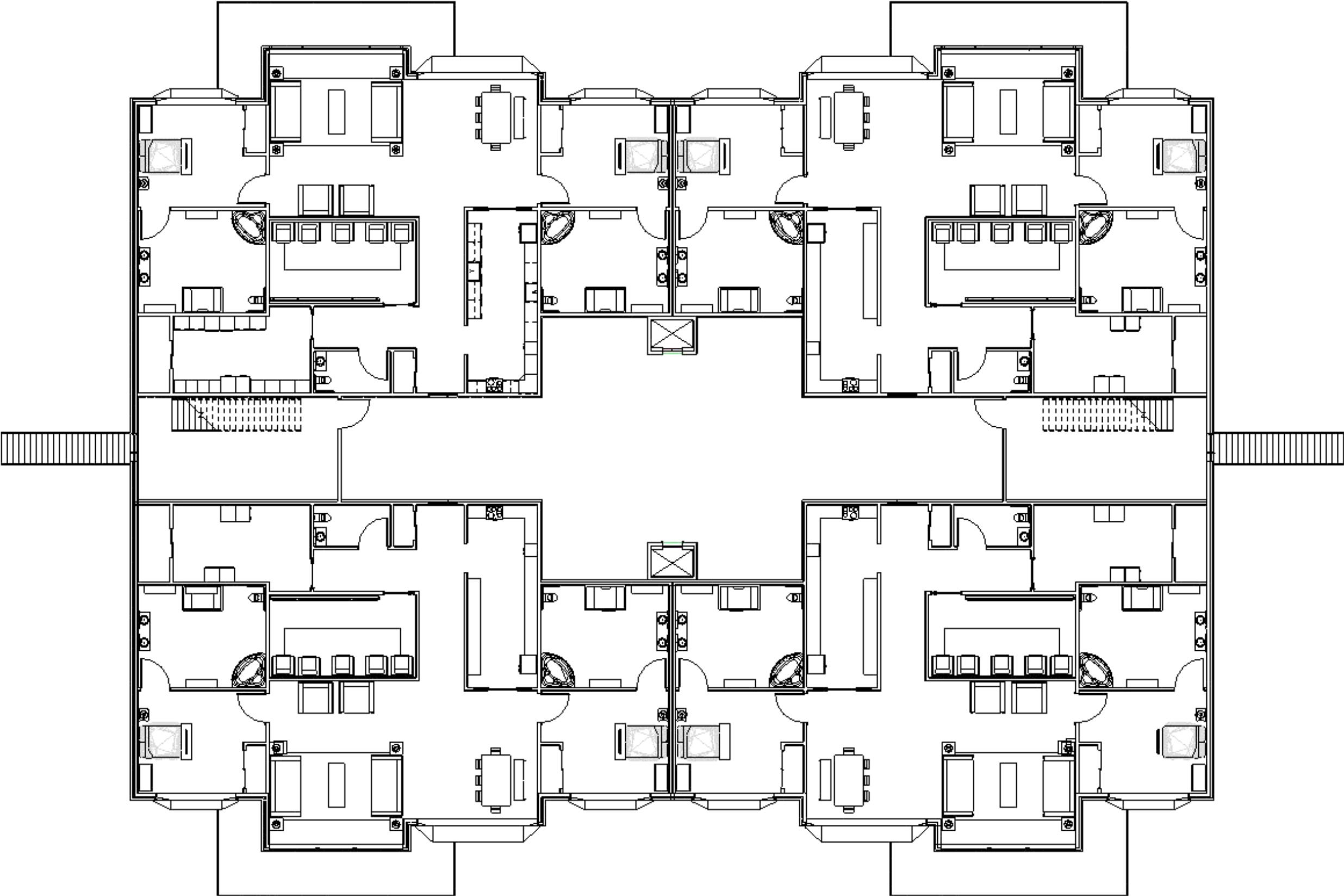
**LAUNDRY ROOM
PERSPECTIVE SKETCH**



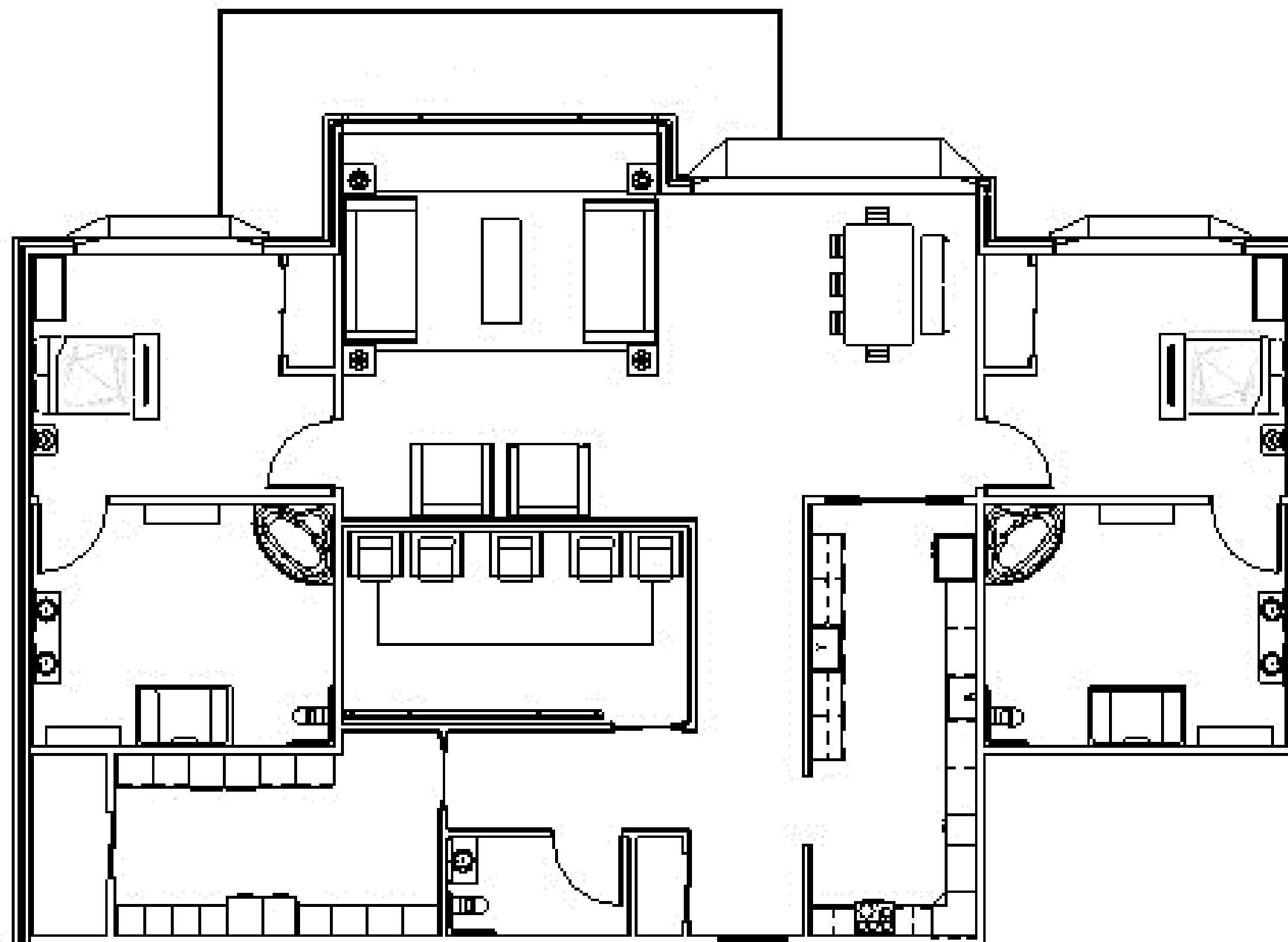
**LIVING ROOM
PERSPECTIVE SKETCH**



FLOOR PLAN

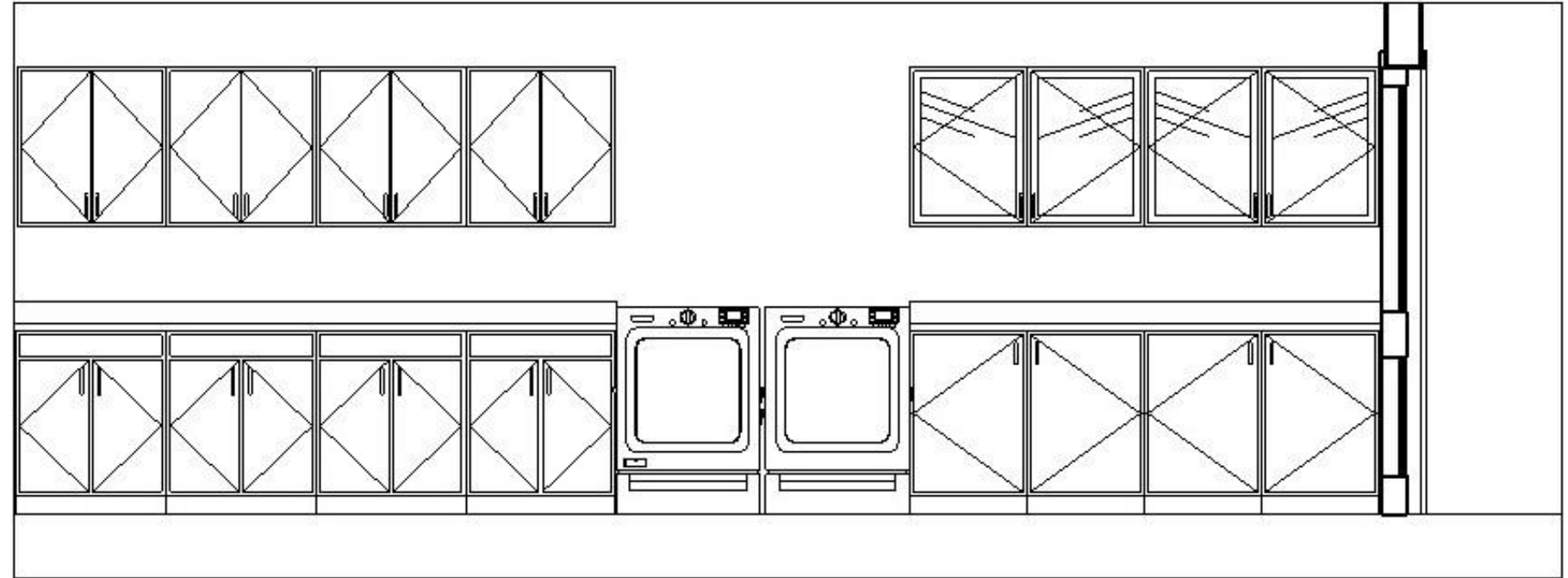


ONE UNIT

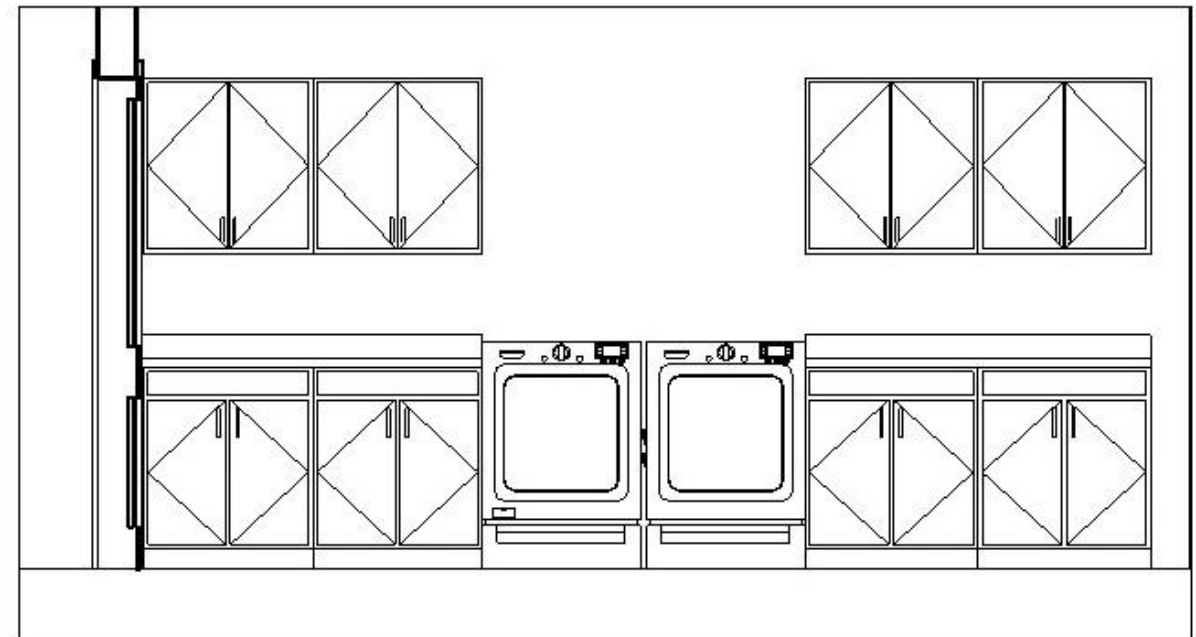


LAUNDRY ROOM ELEVATIONS

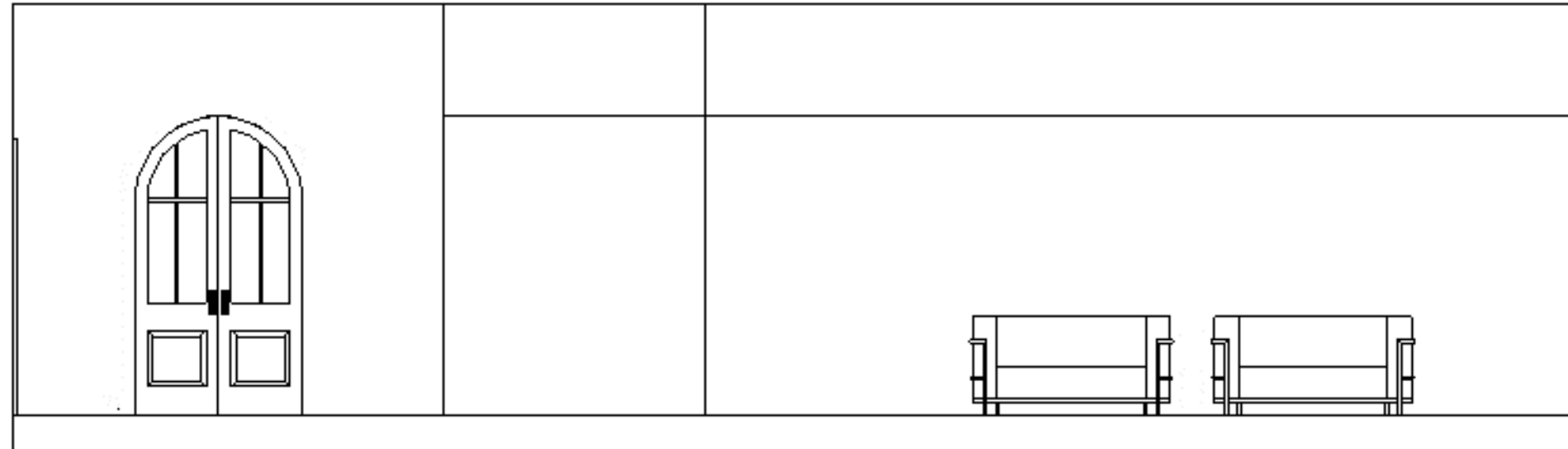
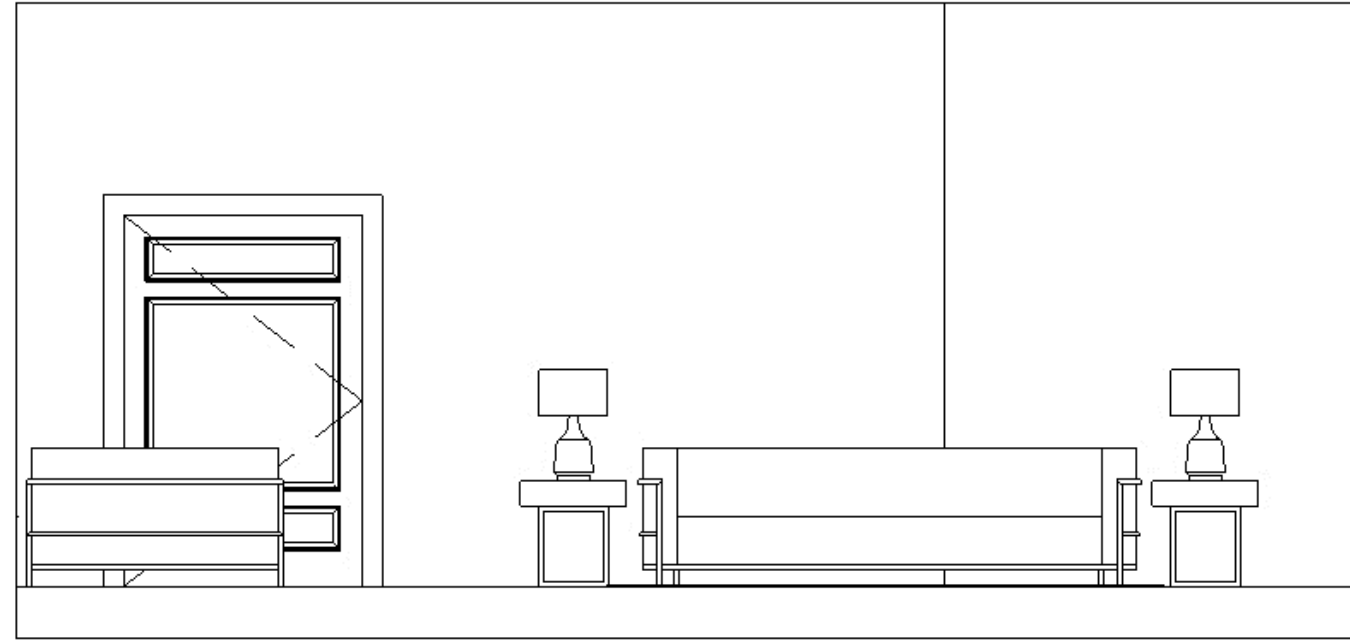
Laundry Room – Long



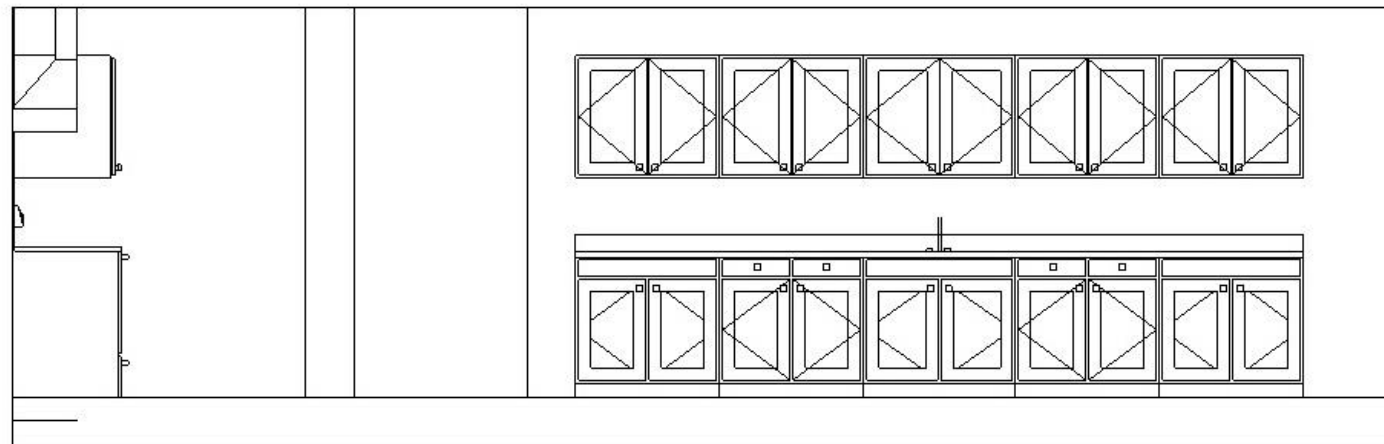
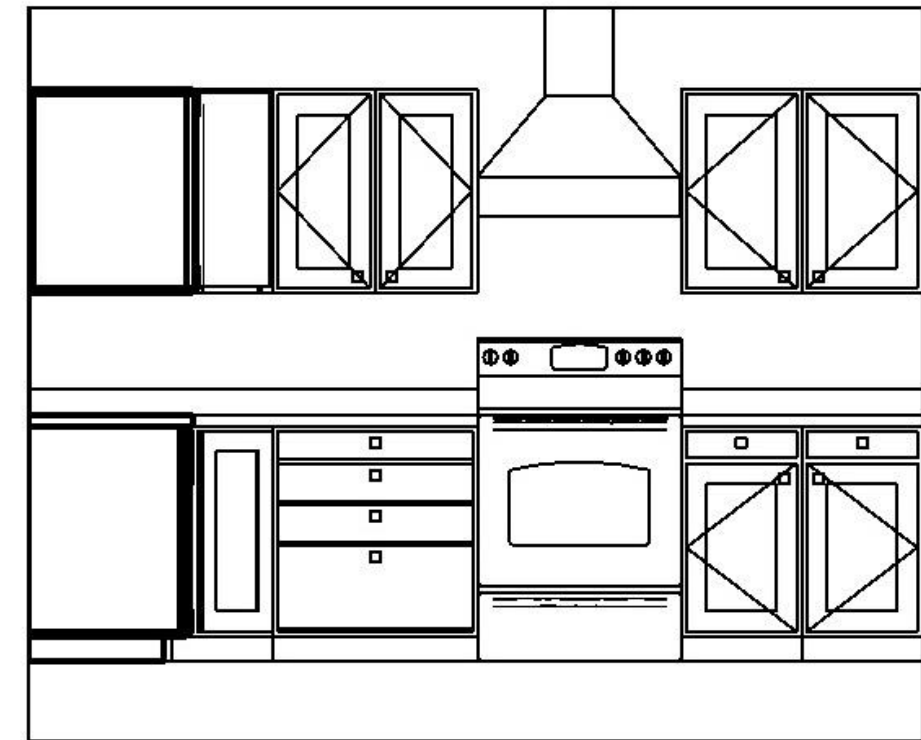
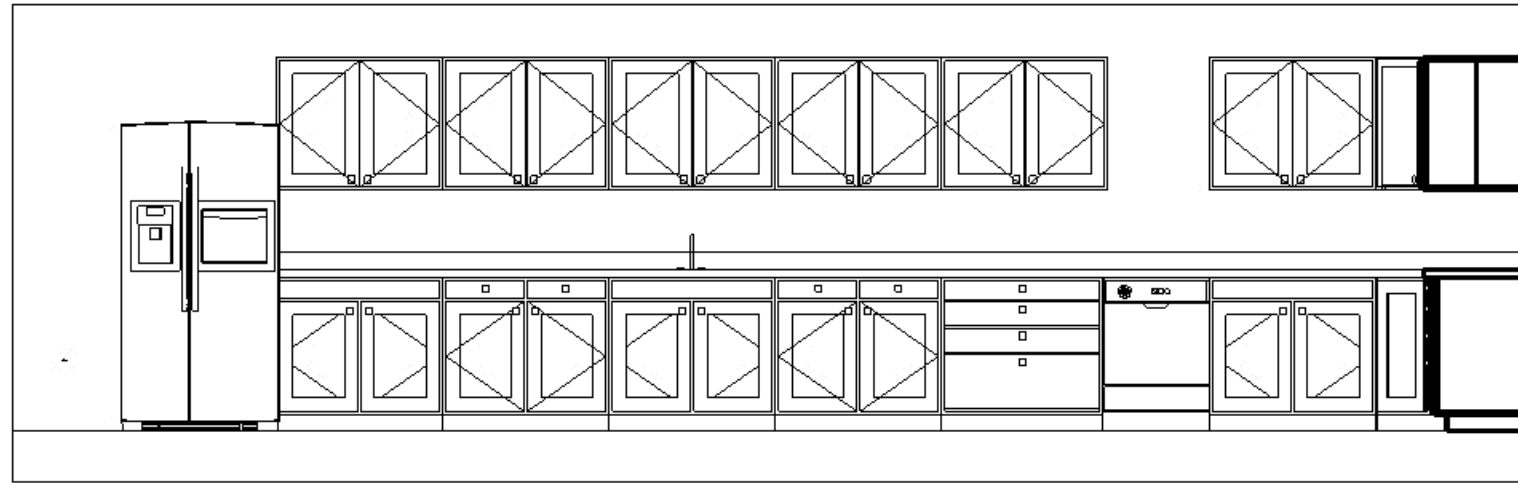
Laundry Room – Short



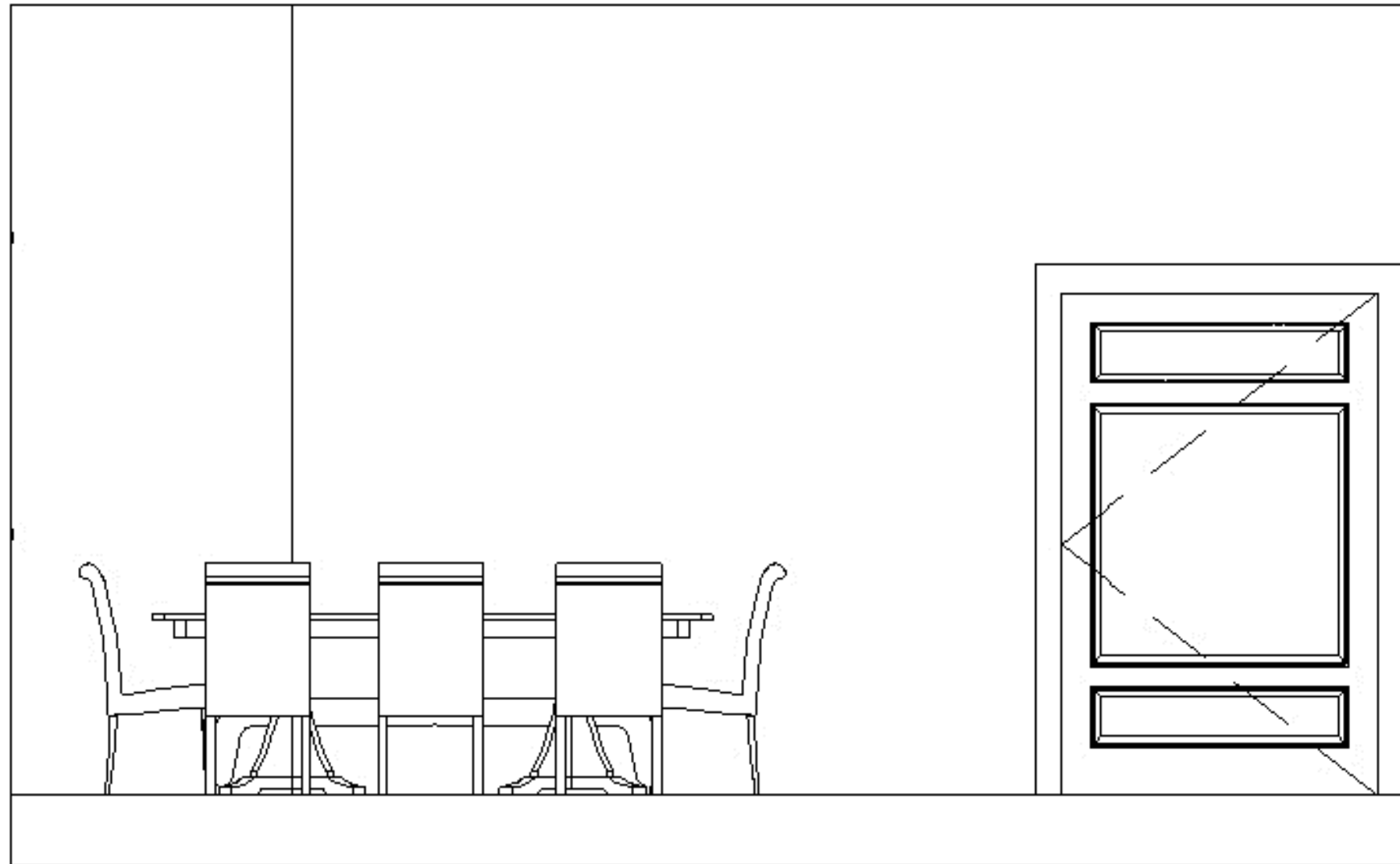
LIVING ROOM ELEVATIONS



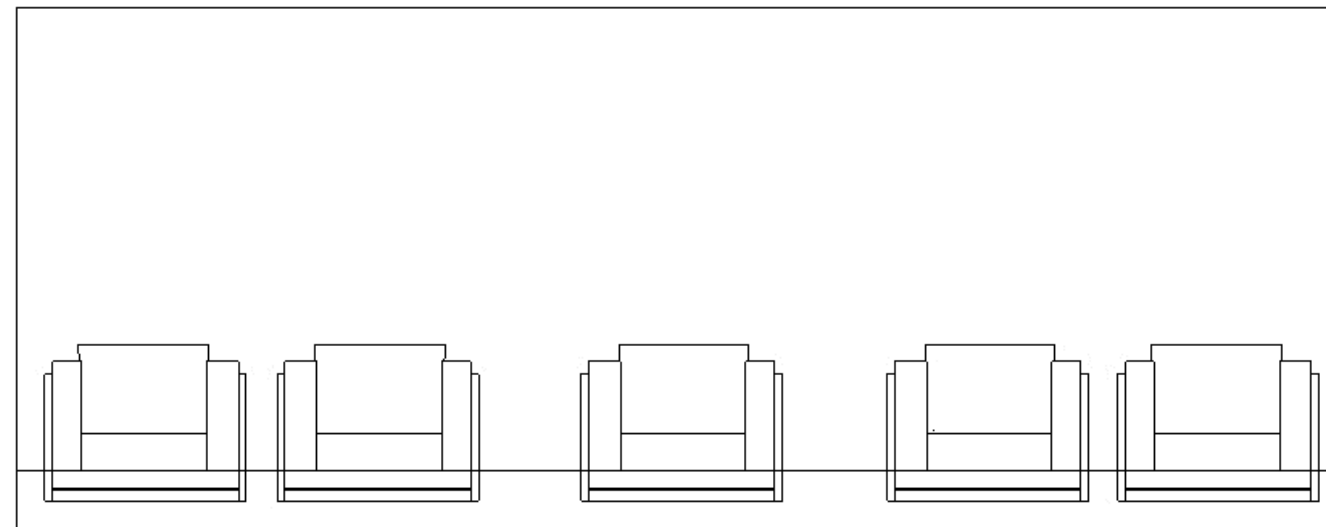
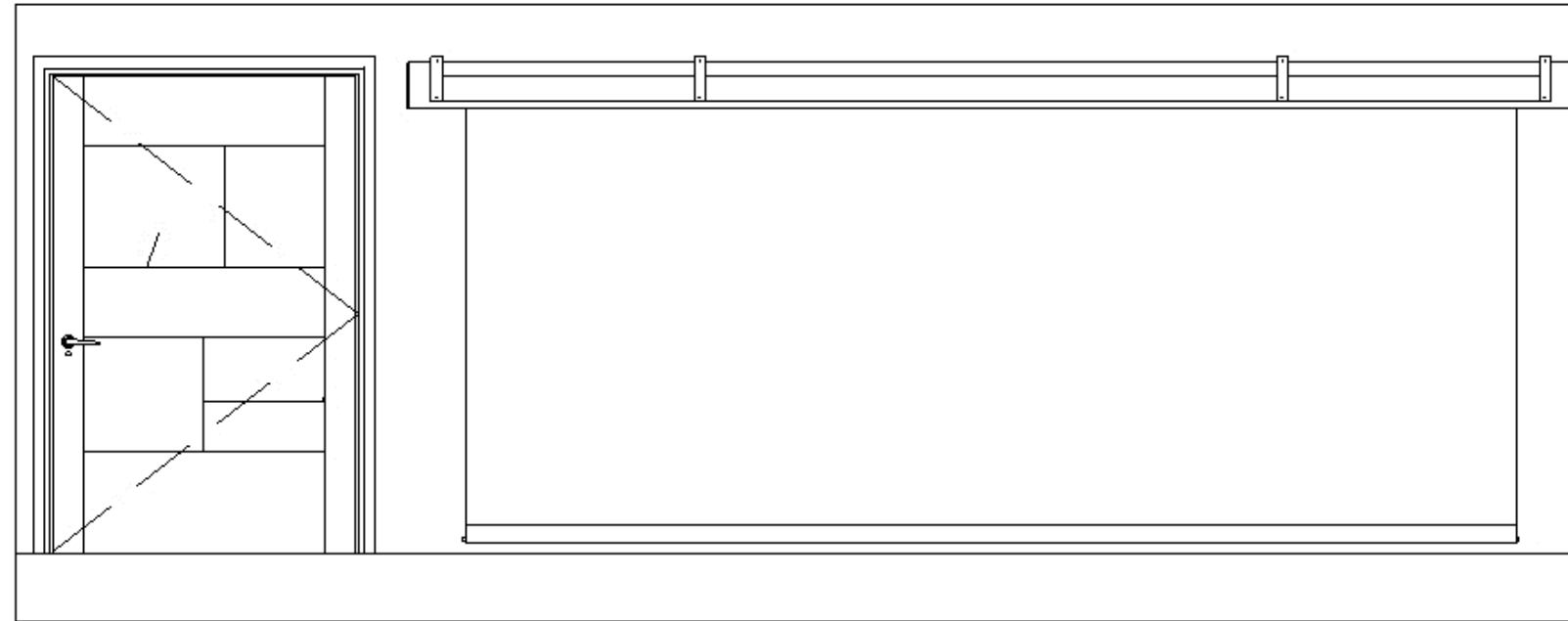
KITCHEN ELEVATIONS



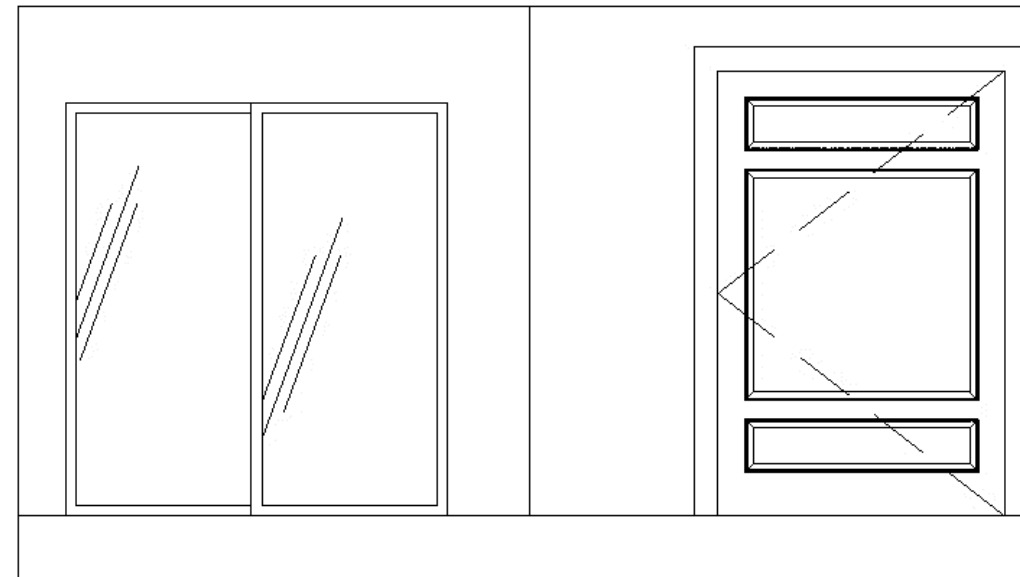
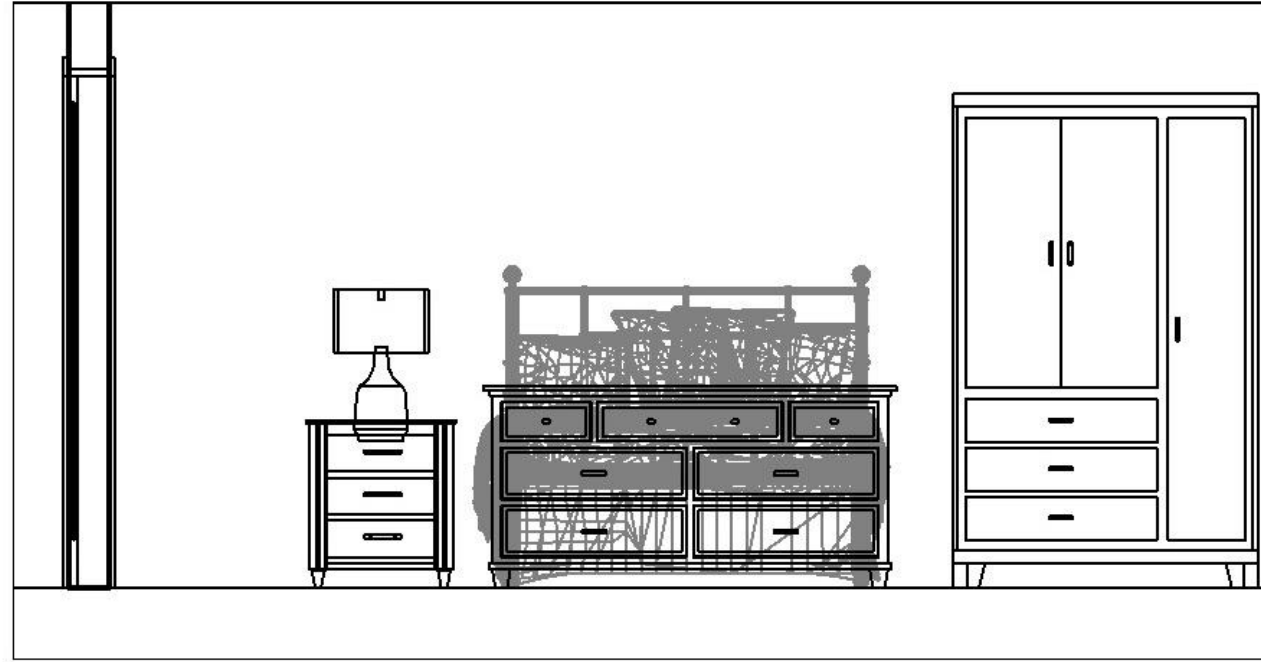
DINING ROOM ELEVATION



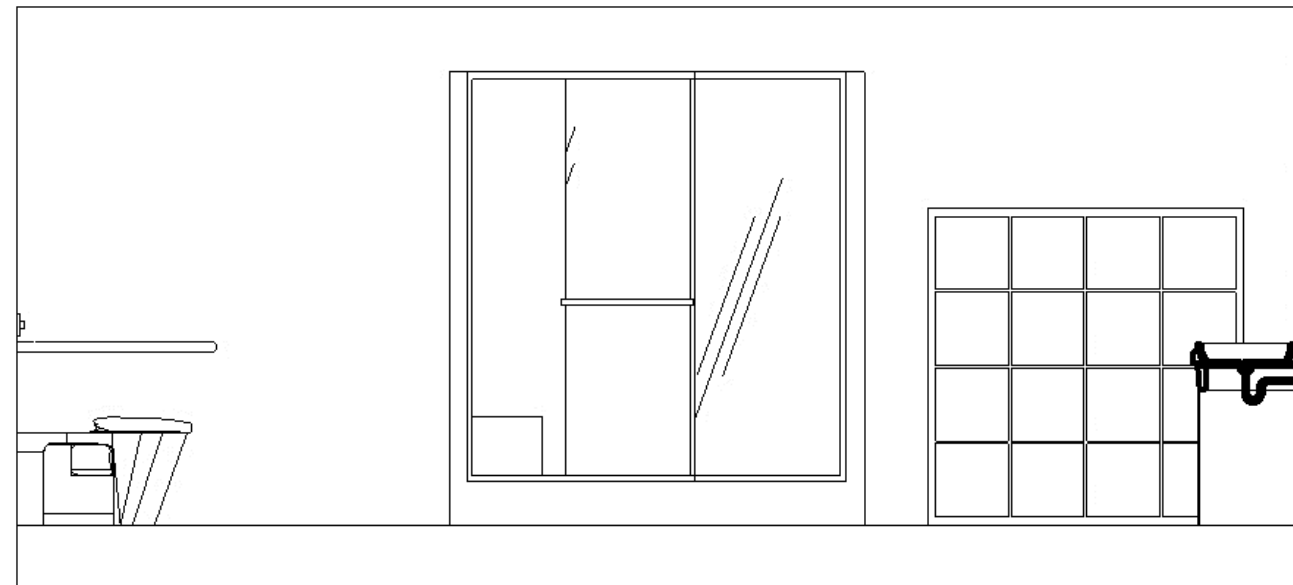
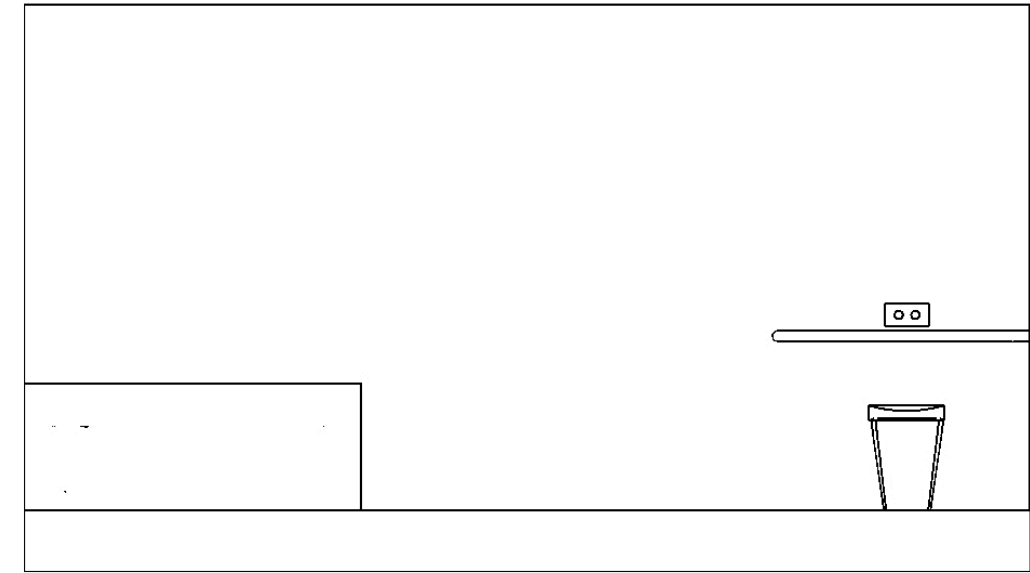
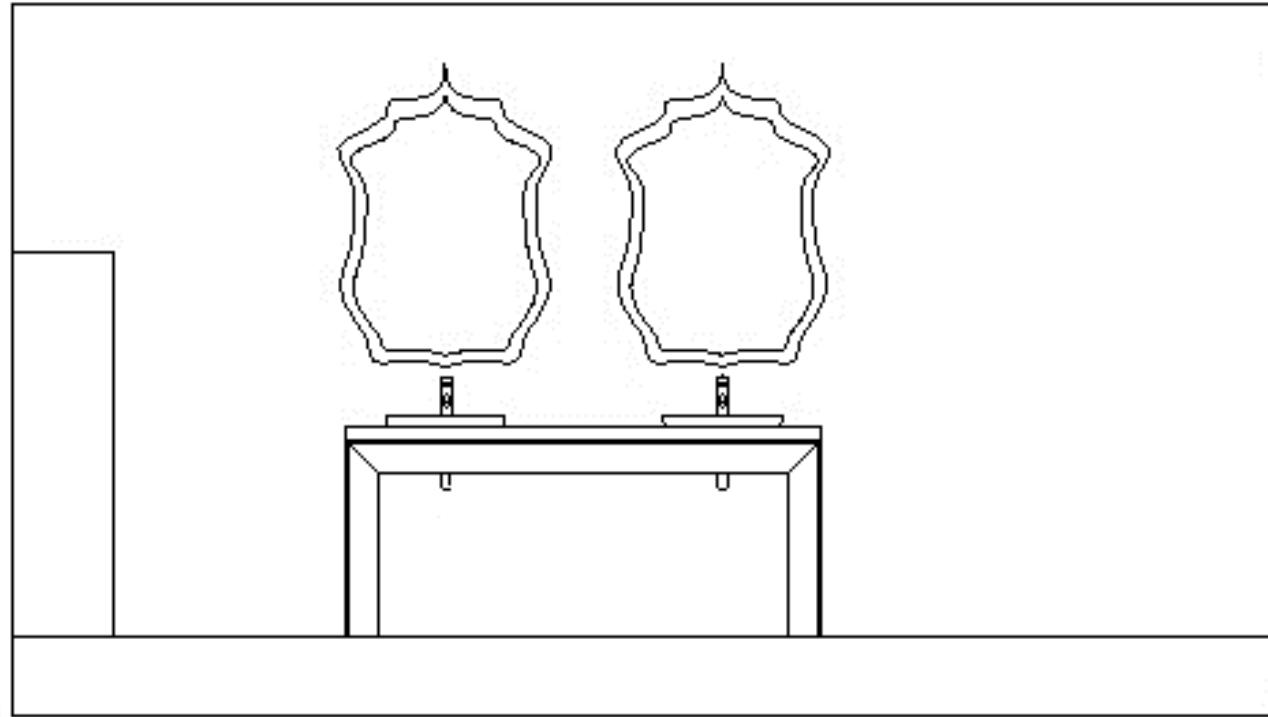
THEATER ROOM ELEVATIONS



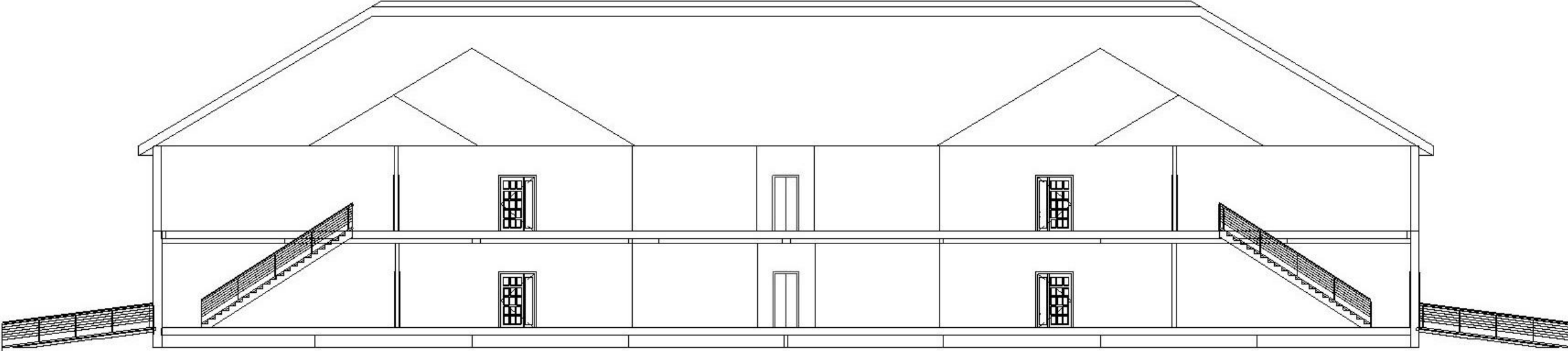
BEDROOM ELEVATIONS



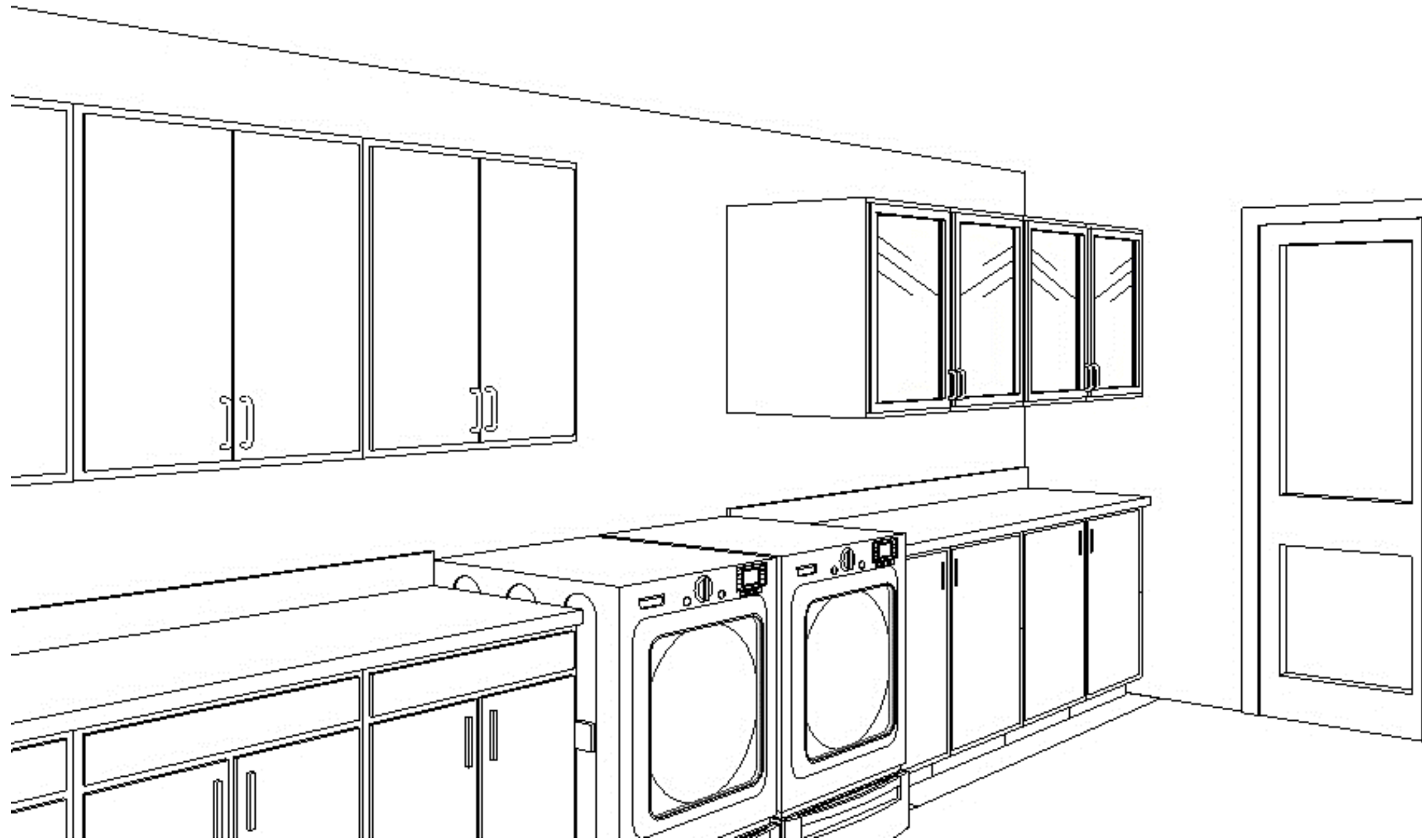
BATHROOM ELEVATIONS



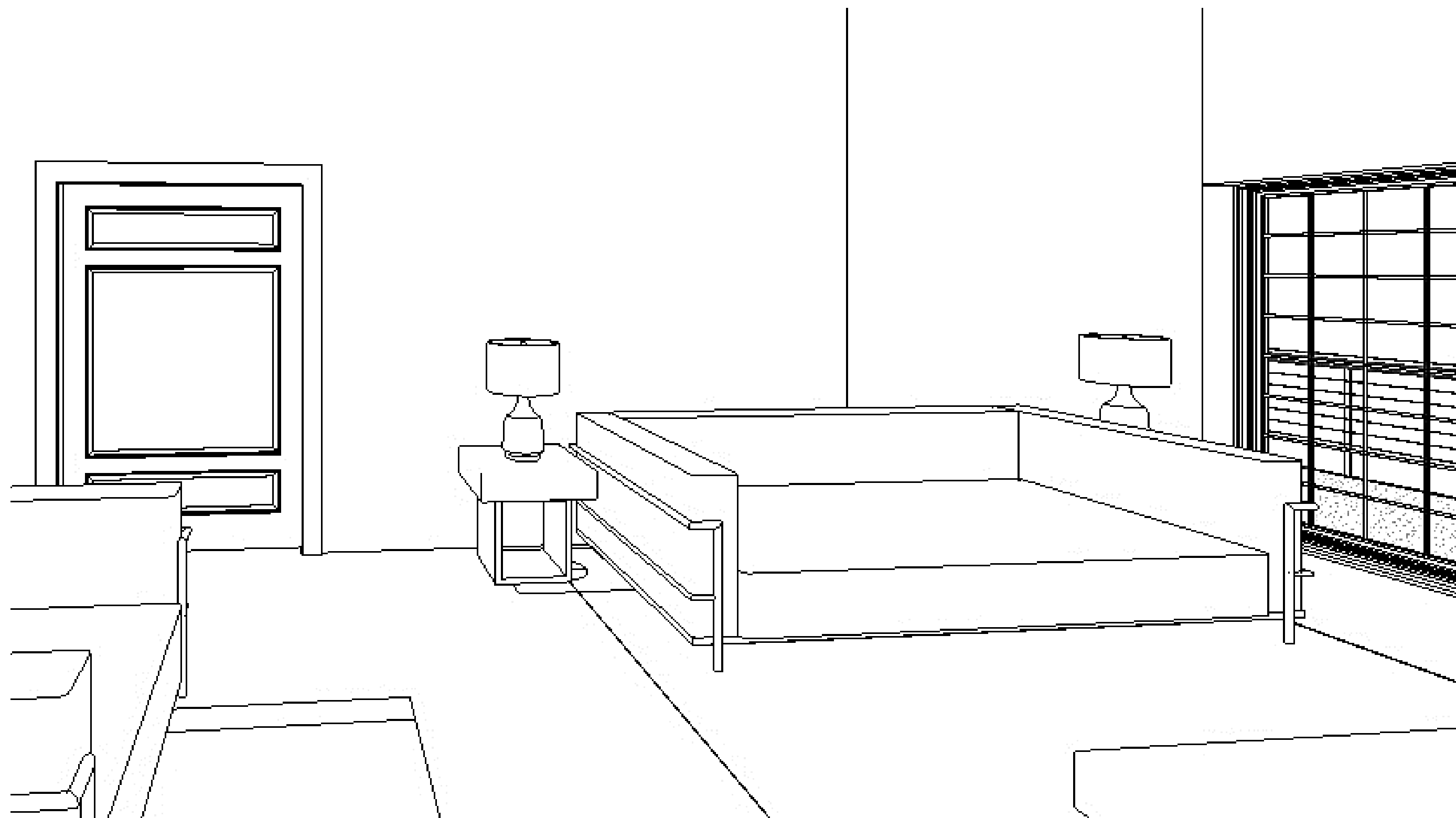
CENTRAL CORRIDOR SECTION



LAUNDRY ROOM PERSPECTIVE



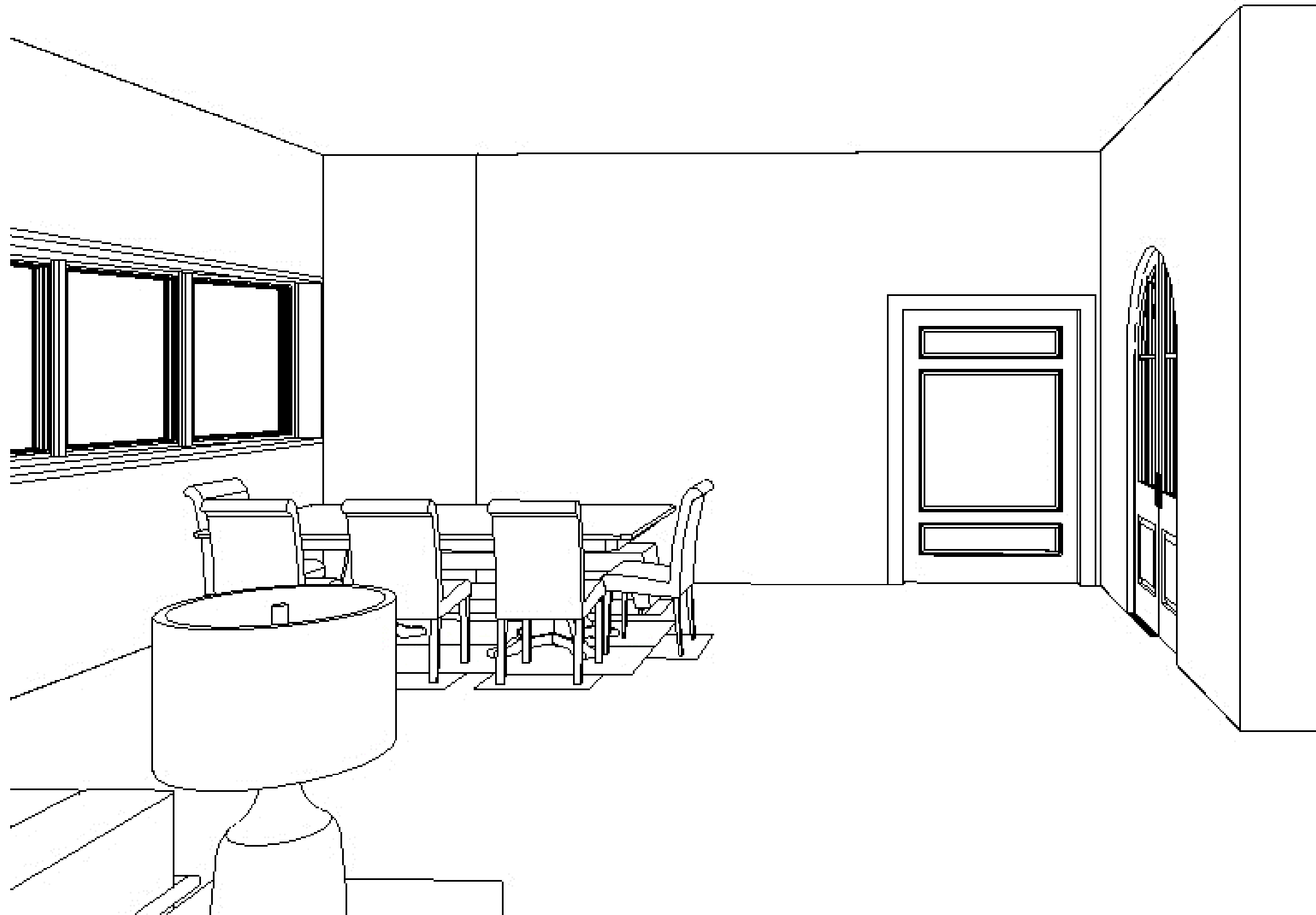
LIVING ROOM PERSPECTIVE



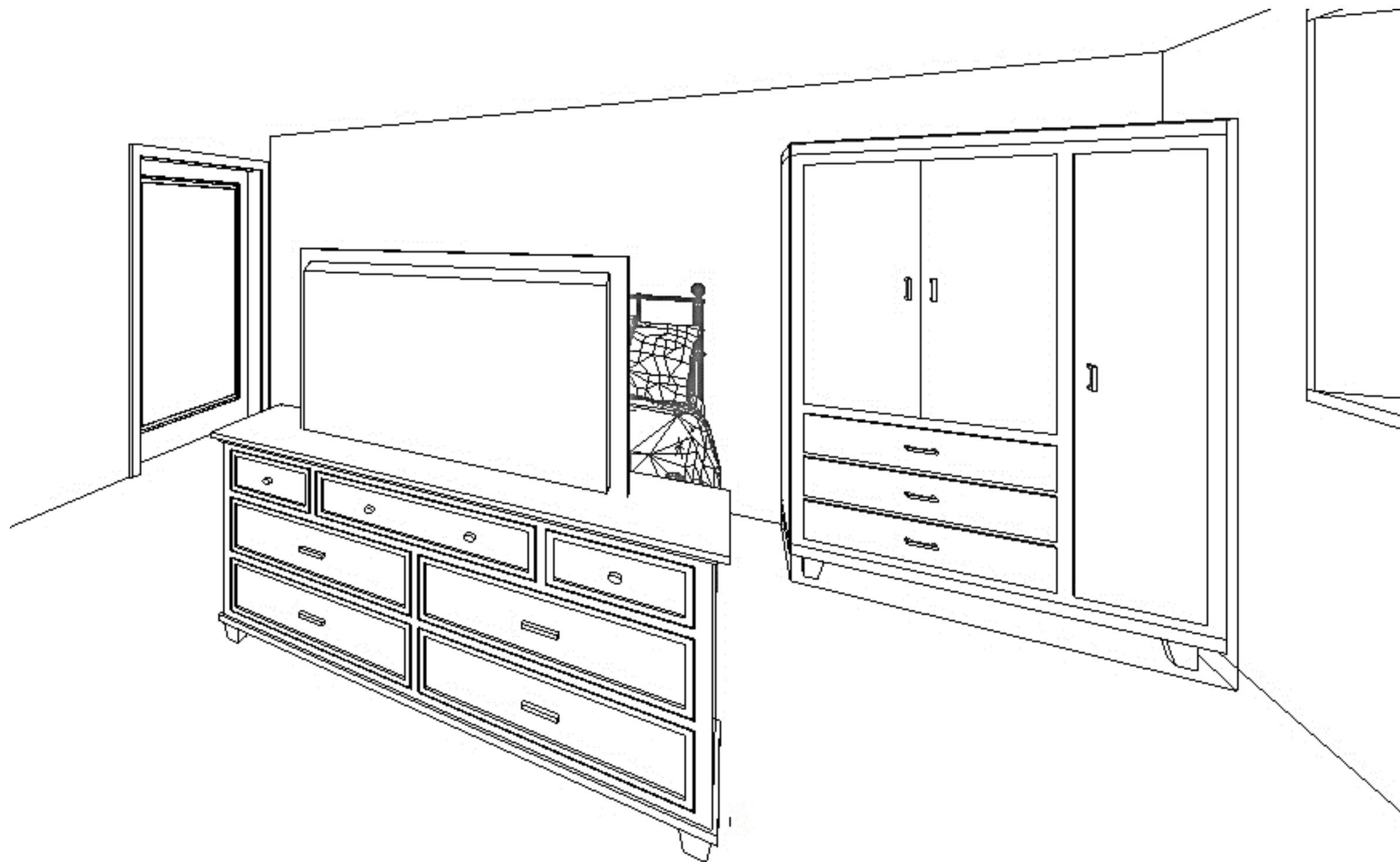
KITCHEN PERSPECTIVES



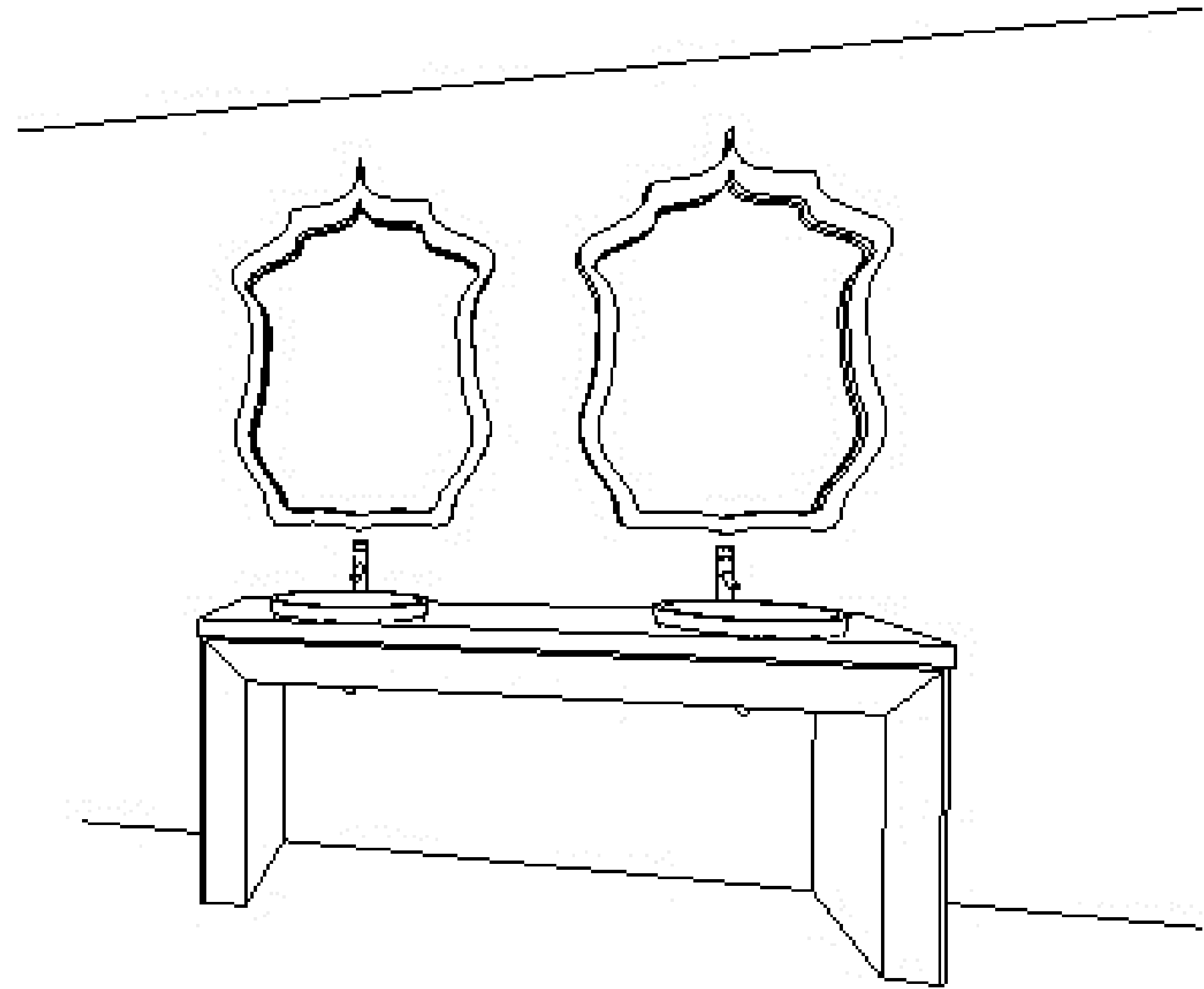
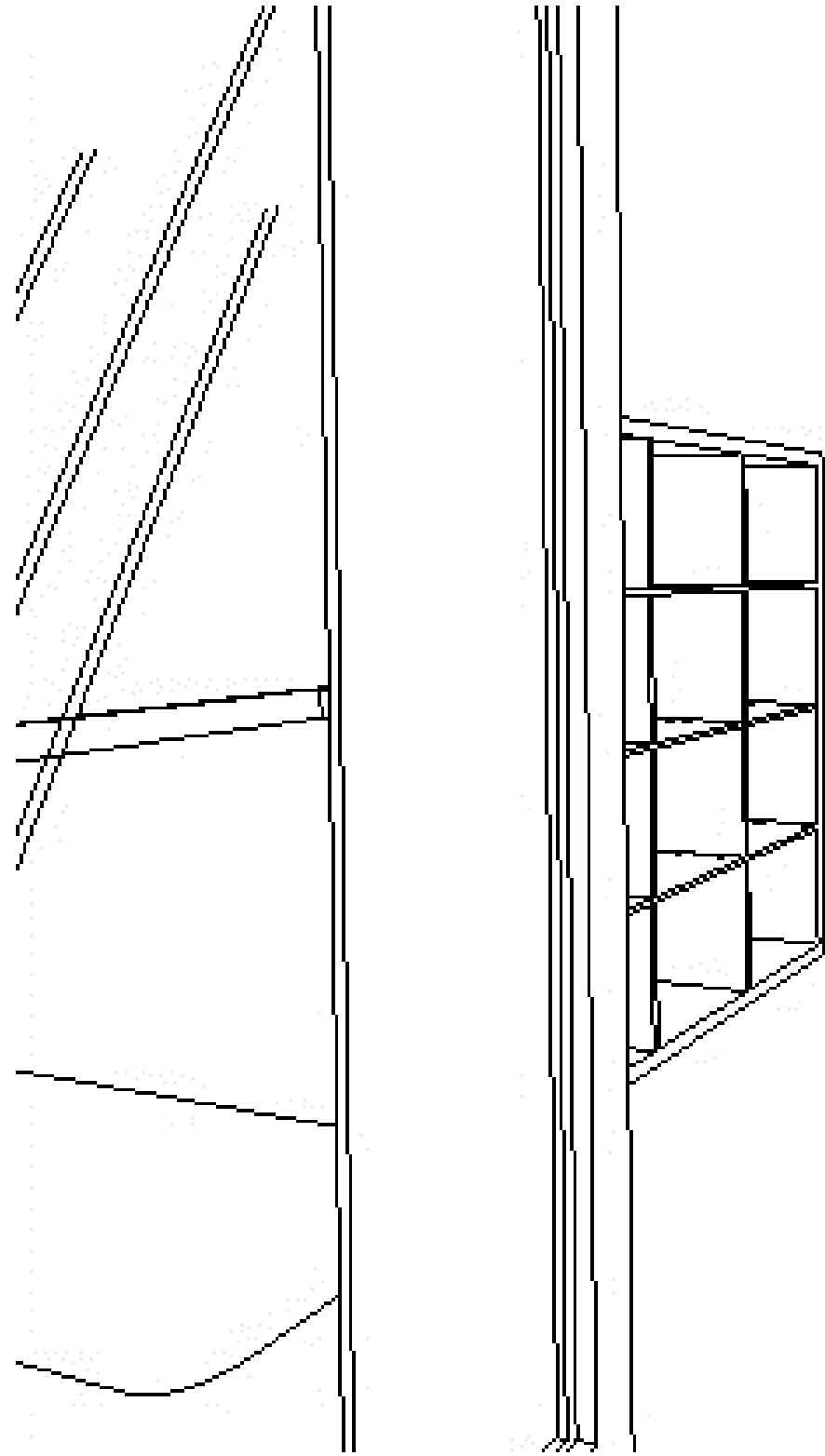
DINING ROOM PERSPECTIVE



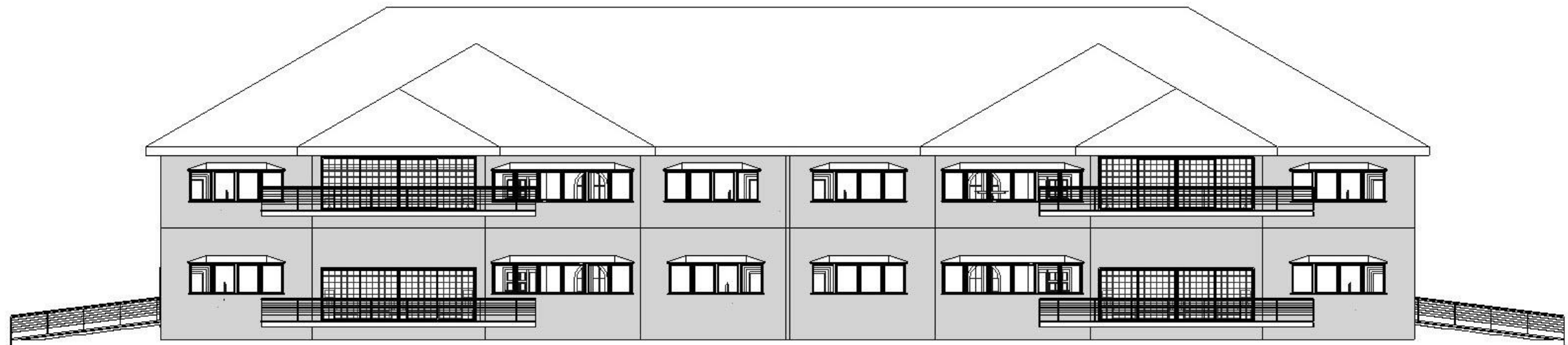
BEDROOM PERSPECTIVE



BATHROOM PERSPECTIVE



AXONOMETRIC VIEW



UNIVERSAL DESIGN-ACCESSIBILITY

-  5' Turning Radius
-  3' Clear Space on the Sides of the Bed
-  Front Loading Washer and Dryer
-  Entry Door Width of 4' - 6"
-  Slip Resistant Floors
-  Wheelchair Friendly Carpet
-  34" Accessible Countertop Height in Kitchen and Bath
-  Toilet Transfer Space
-  Toilet Grab Bars
-  Shower Seat and Hand Held Shower Fixture

