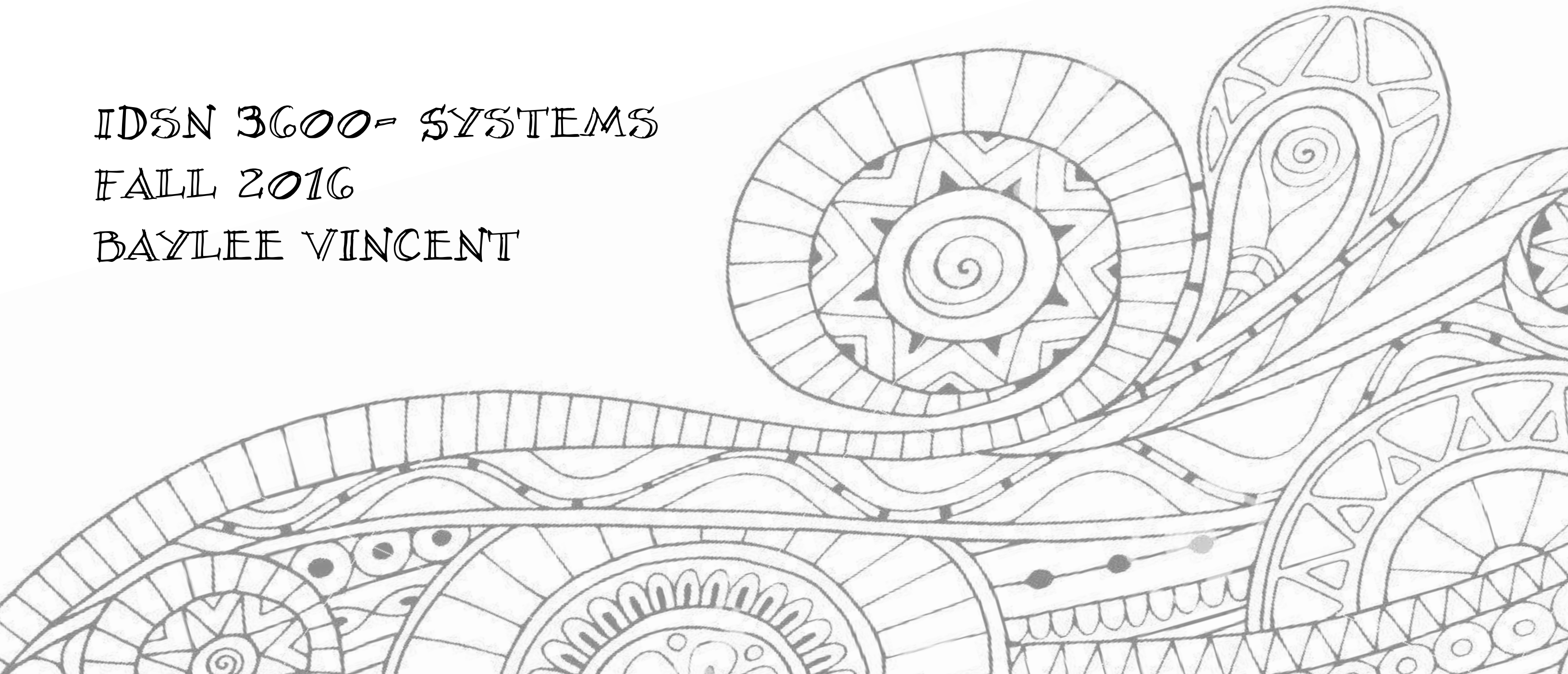


# SENIOR LIVING CONDO DESIGN

IDSN 3600- SYSTEMS

FALL 2016

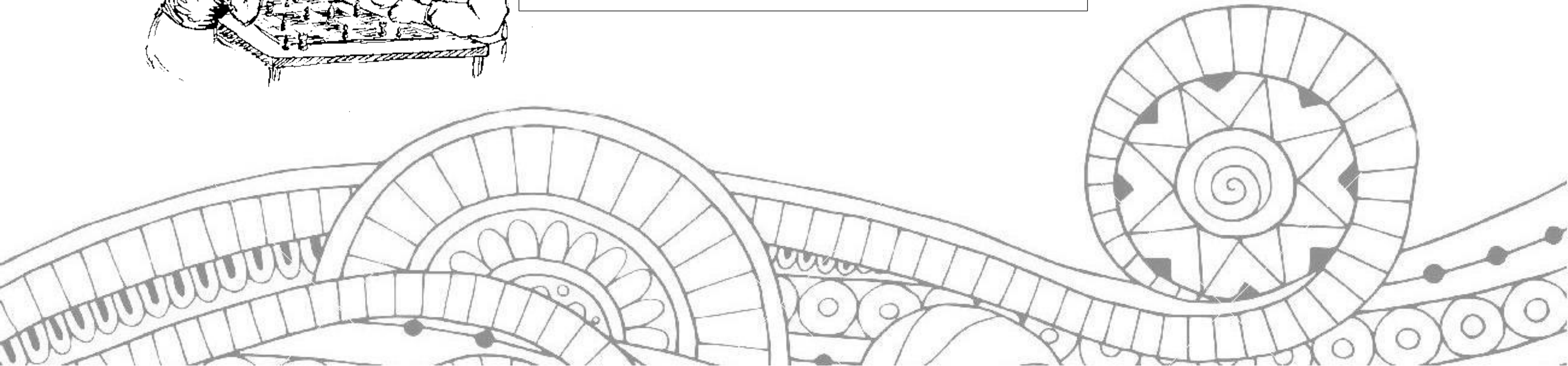
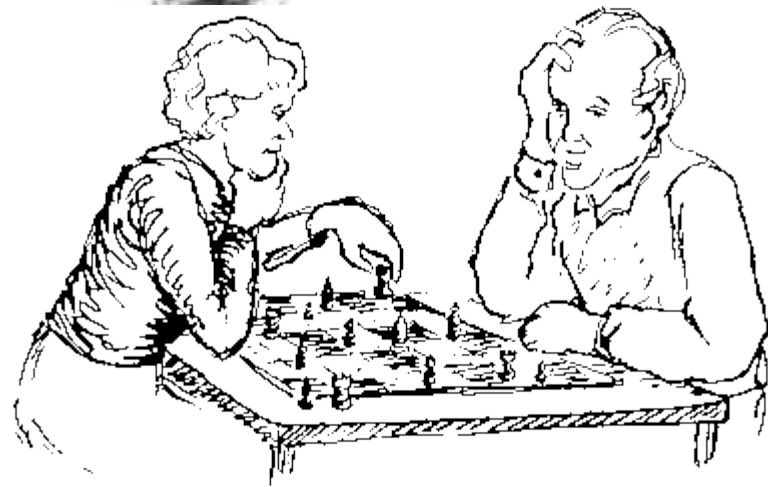
BAYLEE VINCENT





TARGET BUYERS:  
Seniors- 55 and over

- Retirees from the "Baby Boomer" generation
- Interested in the Greenville area
- Looking for a space to "age in place"
- Active, affluent
- Couples or singles
- Seniors who want to live in a community but not to feel restricted or limited because of their age or ability



## SENIOR LIVING CONDO

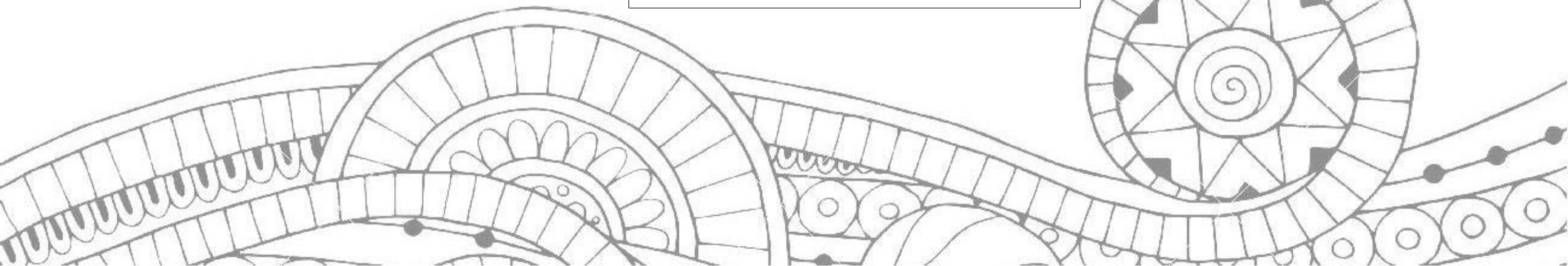
Greenville, NC

- Master Bedroom Suite
  - Bedroom: 300 ft<sup>2</sup>
  - Bathroom: 150-250 ft<sup>2</sup>
    - Master suite is private but spacious enough for tenants, regardless of age or ability
    - Will be designed to have access to outdoor space + living room
- Guest Bedroom: 150-250 ft<sup>2</sup>
  - Designed for visitors- spacious + easy access to guest bathroom + living spaces
- Guest Bathroom: 50-150 ft<sup>2</sup>
  - Will be designed for visitors (close to guest bedroom)
  - Main bathroom for shared living spaces, at least a 3 piece
- Living Room: 300-500 ft<sup>2</sup>
  - Designed to be in the center of floorplan for easy access + main living/entertainment space

- Dining Room: 100-150 ft<sup>2</sup>
  - Formal dining- large enough to host multiple visitors
- Kitchen: 150-200 ft<sup>2</sup>
  - Large, gourmet kitchen that will be designed to be universal to all needs
  - Will have seating for informal dining
- Laundry Room/Mudroom/Storage
  - Laundry/Mudroom: 80-100 ft<sup>2</sup>
  - Storage: 15-20 ft<sup>2</sup>
    - Designed to provide a spacious workspace + storage area to fit tenants' needs
- Bonus Room: 100-200 ft<sup>2</sup>
  - Will either be designed as a sunroom (outdoor access), office/library, or sitting area

Approx. Total Square Footage:

1400-2100



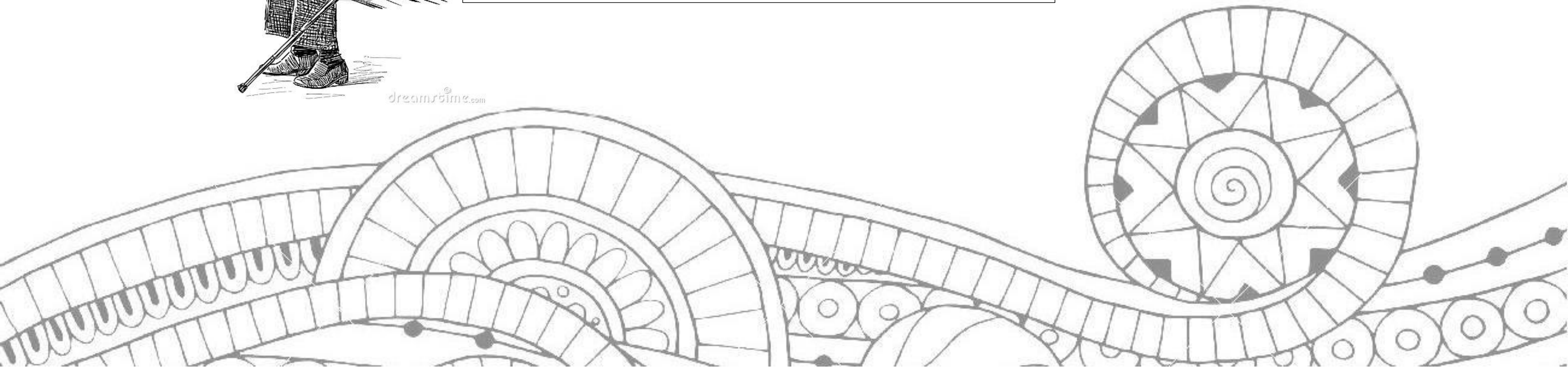


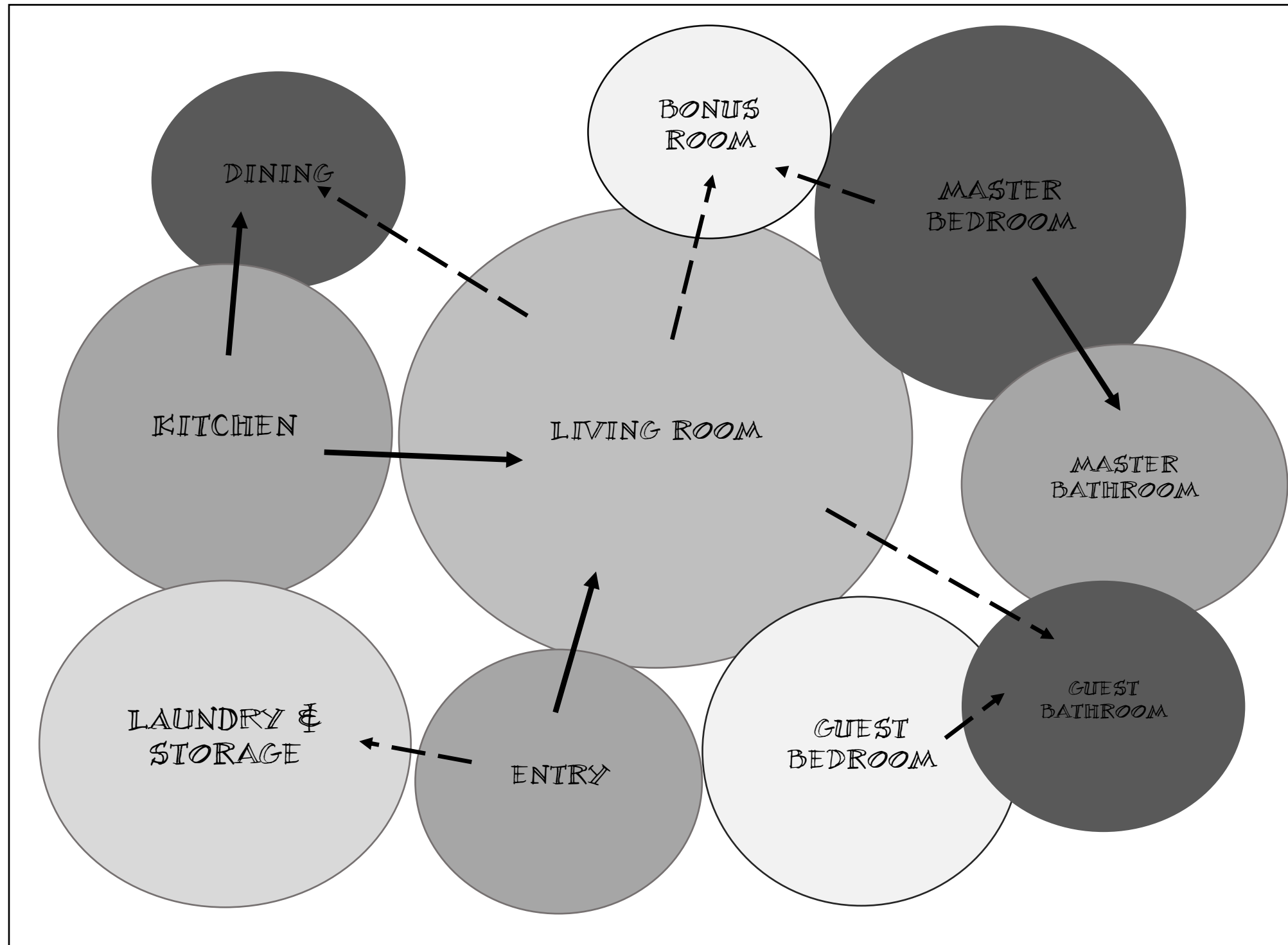
## SENIOR LIVING CONDO

Greenville, NC

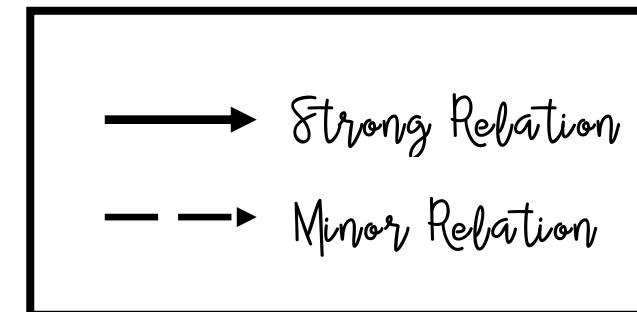


- The space planning of these areas are based off of the need for universal design + creating a space for tenants to "age in place" in
- Wheelchair maneuvering must be accounted for in each space which may lead to the use of more square footage
- Open concept will be used for this design to accommodate all tenants + create an airy, spacious space for everyone to enjoy over time
- The outdoor space is for an entertainment or relaxation area in addition to being an additional means of egress

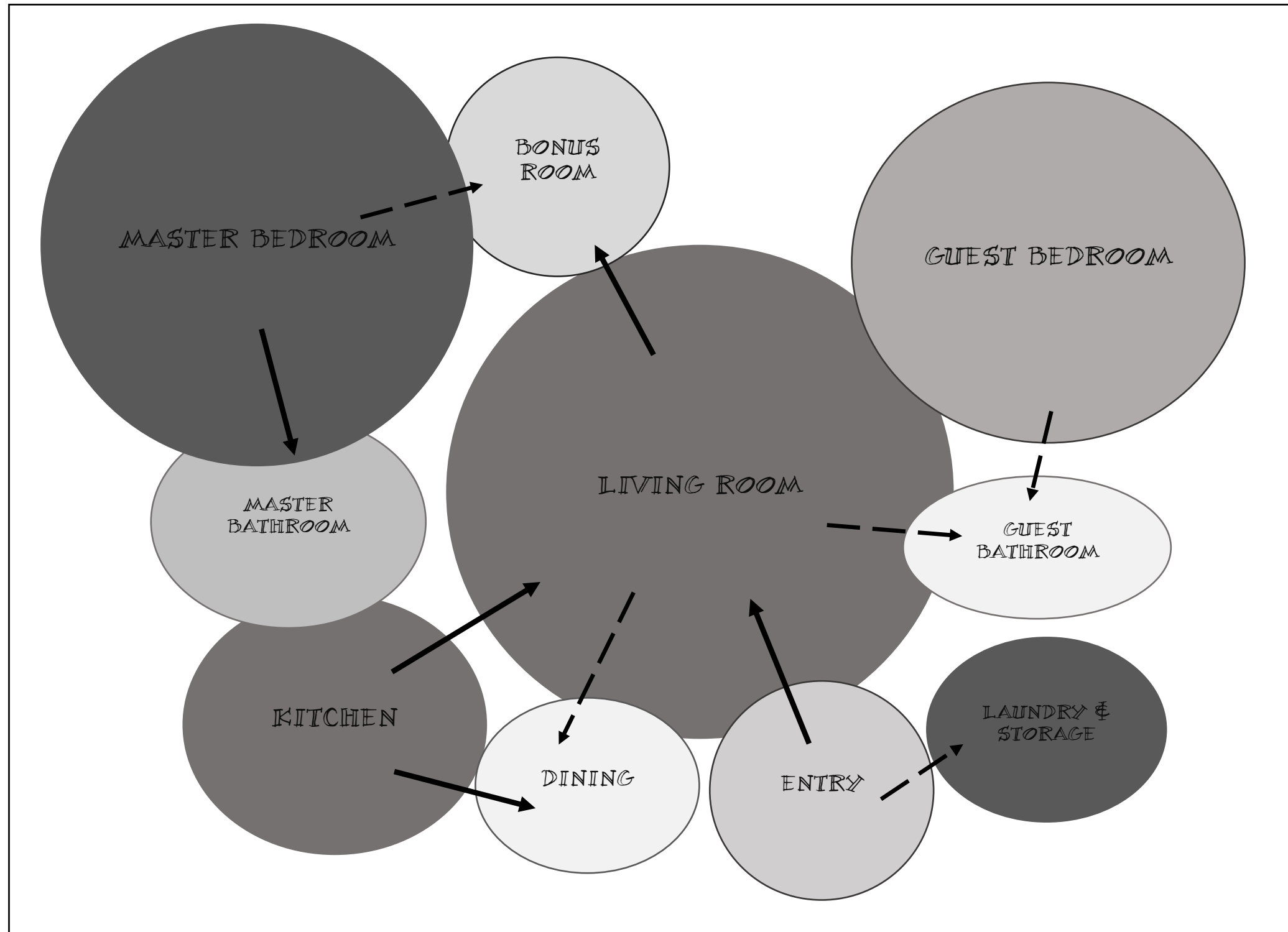




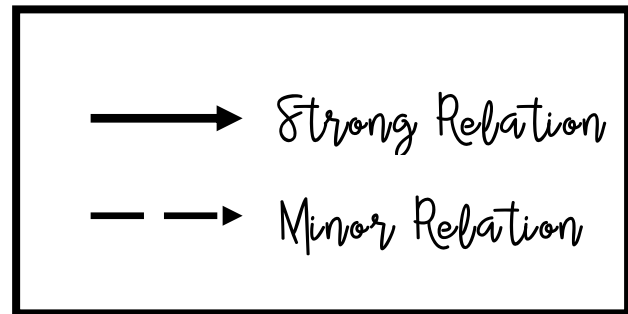
## PROGRAMMING: BUBBLE PLAN 1



- This bubble plan features 2 bedrooms (includes one master), 2 bathrooms, dining and living rooms, large kitchen, laundry and storage space, and a bonus room.



## PROGRAMMING: BUBBLE PLAN 2



- This bubble plan features 2 bedrooms (includes one master), 2 bathrooms, dining and living rooms, large kitchen, laundry and storage space, and a bonus room.

PROGRAMMING:  
BLOCK PLAN 1



DINING

BONUS  
ROOM

MASTER BEDROOM

KITCHEN

LIVING ROOM

MASTER BATHROOM

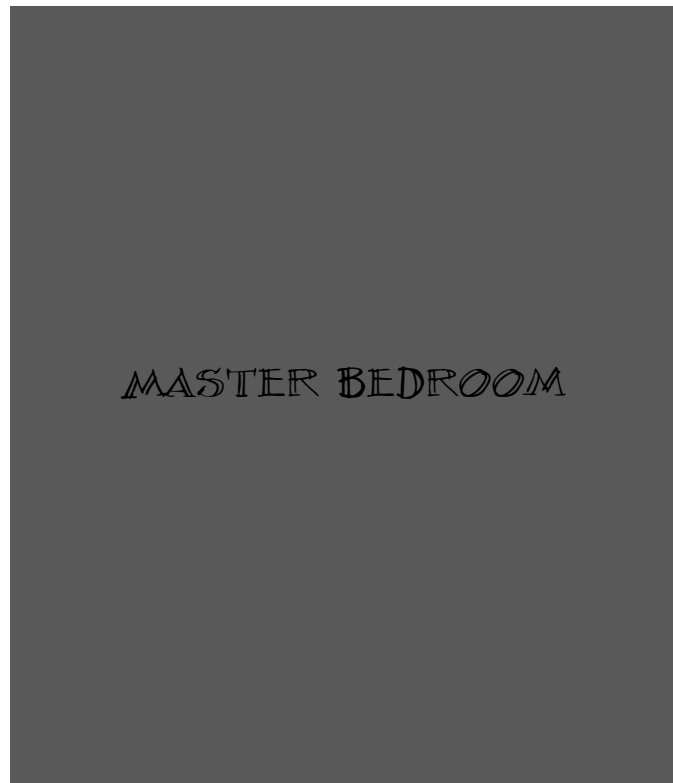
LAUNDRY & STORAGE

GUEST BATHROOM

ENTRY

GUEST BEDROOM

PROGRAMMING:  
BLOCK PLAN 2



MASTER BEDROOM



BONUS ROOM



LIVING ROOM



GUEST BEDROOM



MASTER BATHROOM



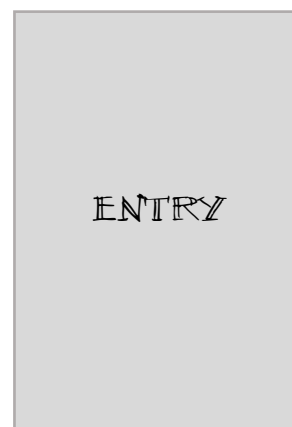
GUEST  
BATHROOM



KITCHEN



DINING



ENTRY



LAUNDRY &  
STORAGE



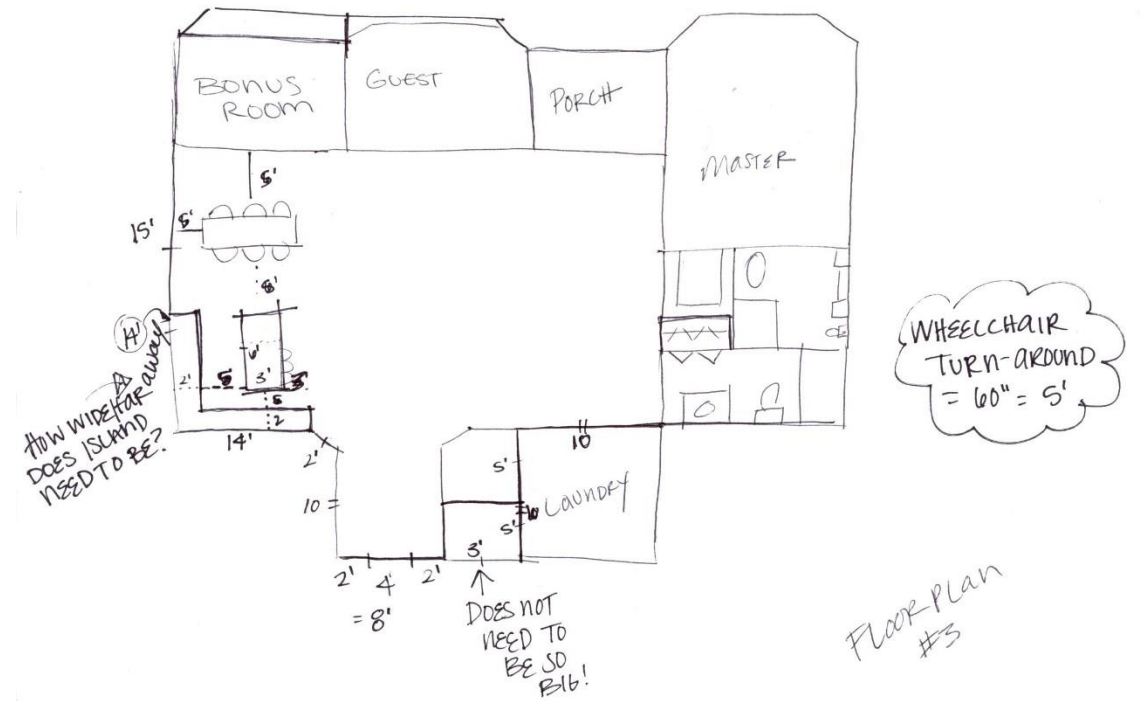
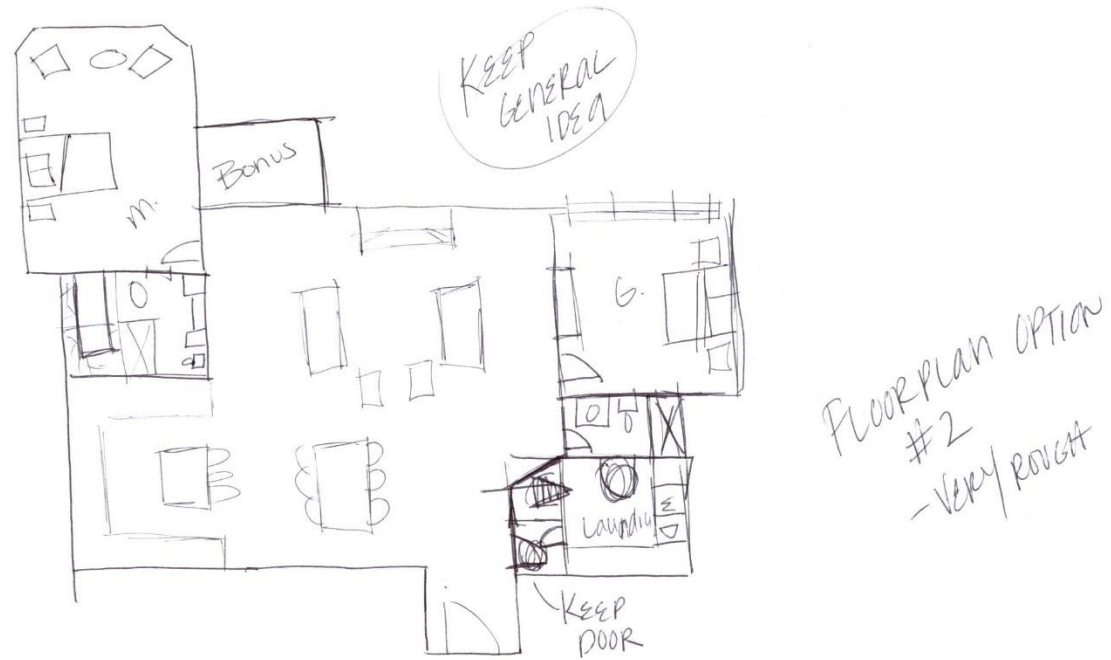
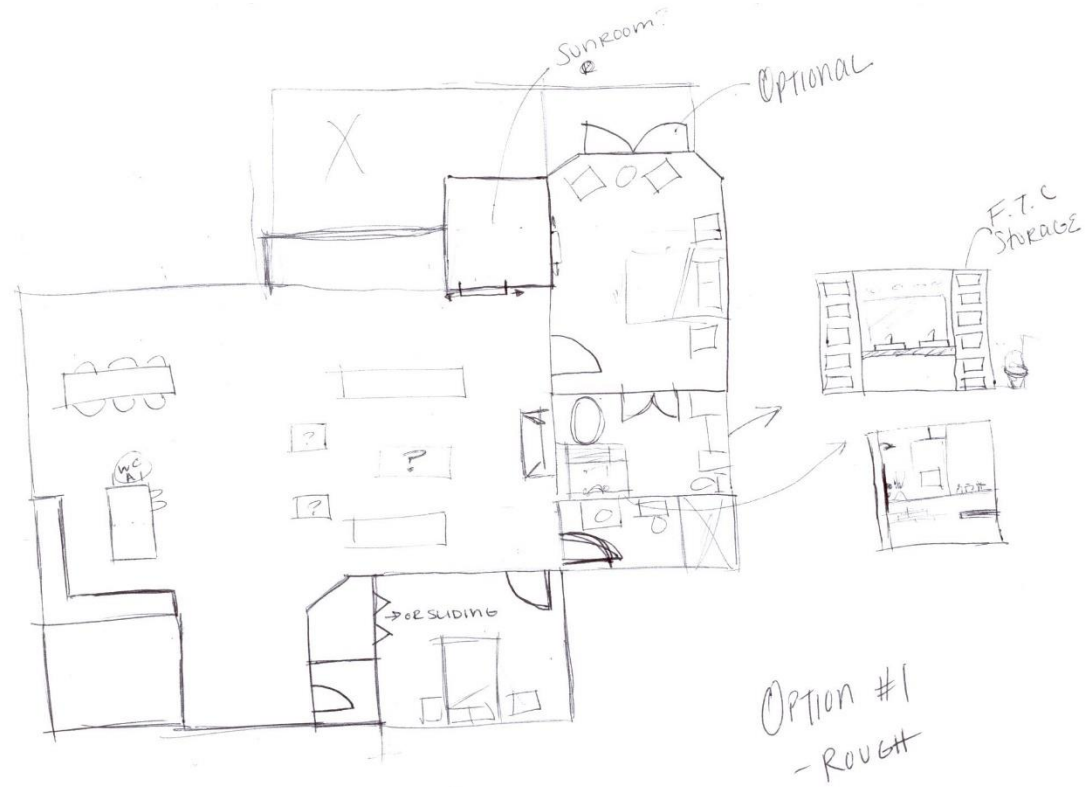
# INSPIRATION Kitchen & Living



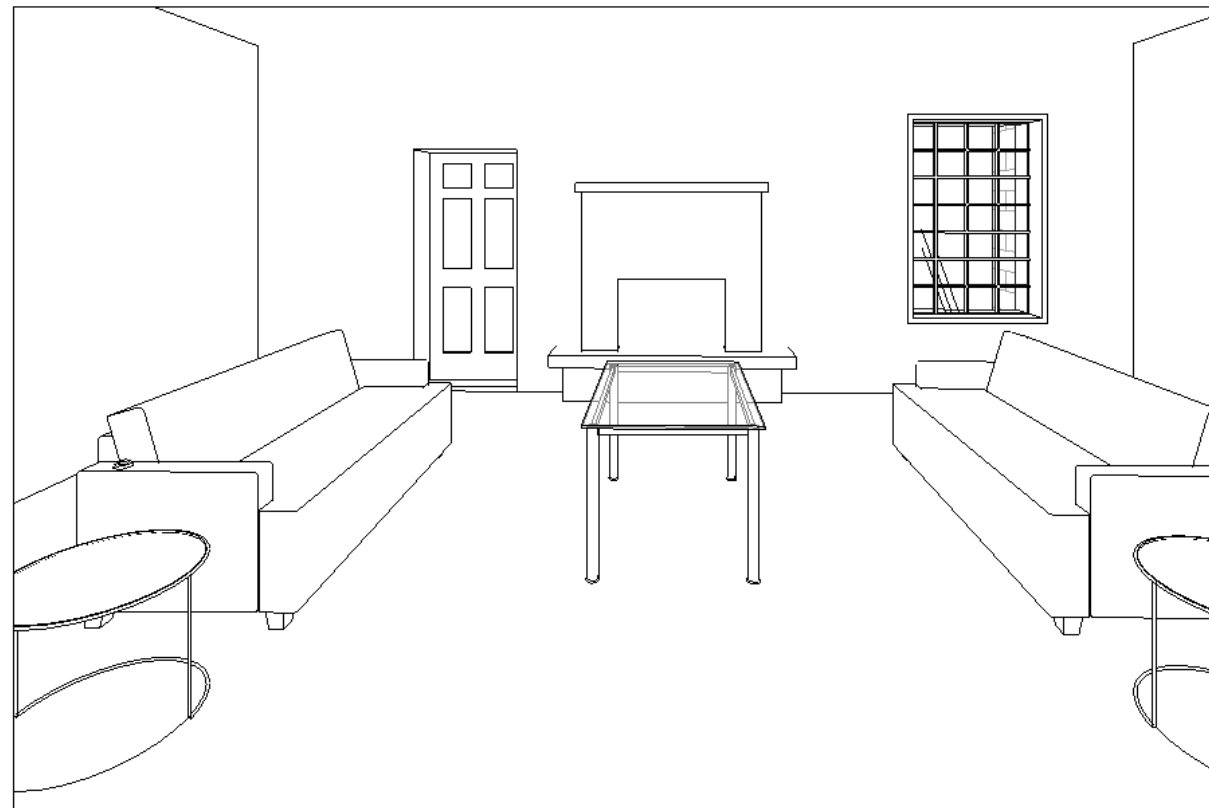
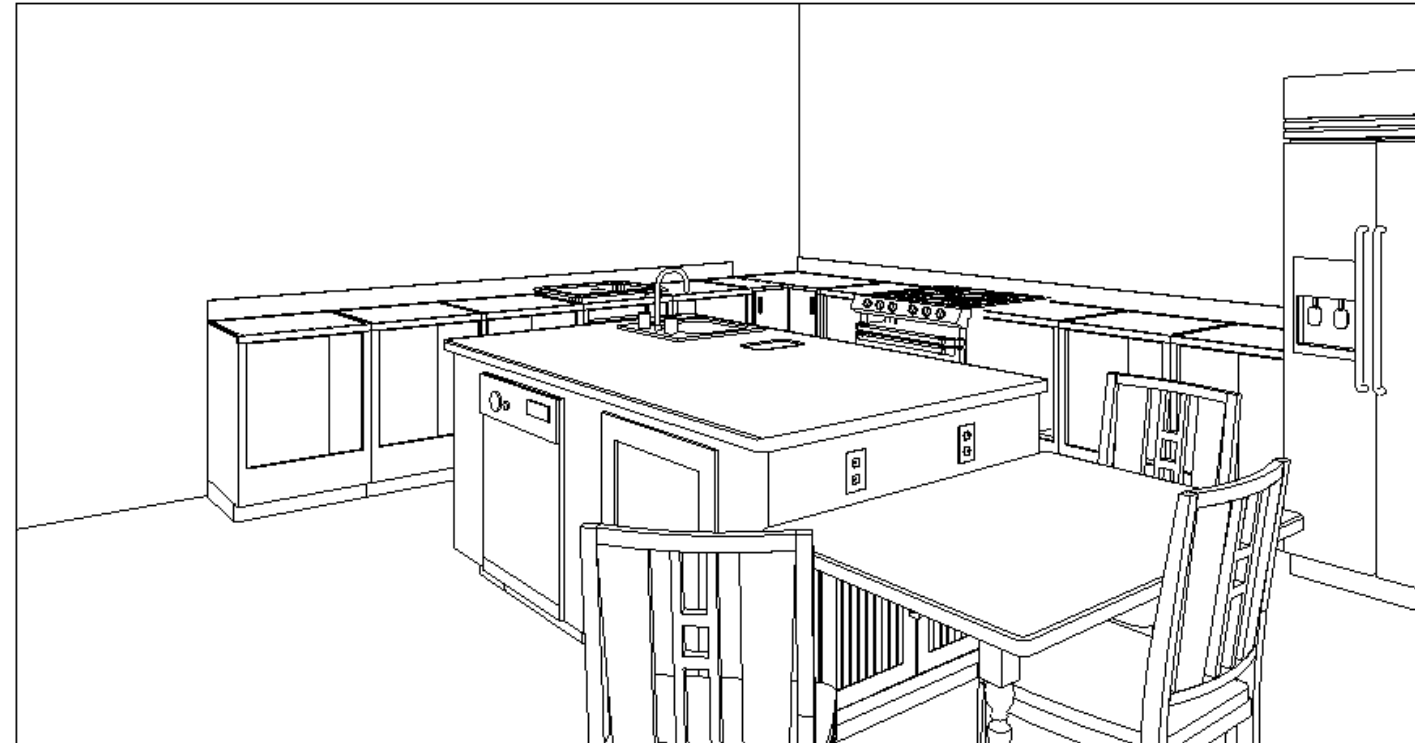
INSPIRATION  
Bathroom & Bedroom



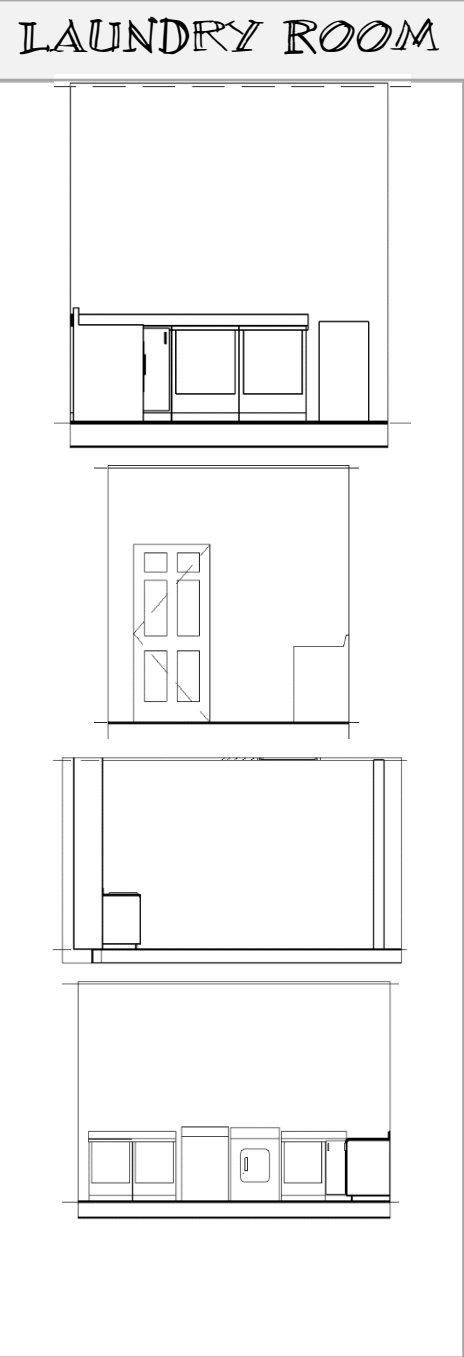
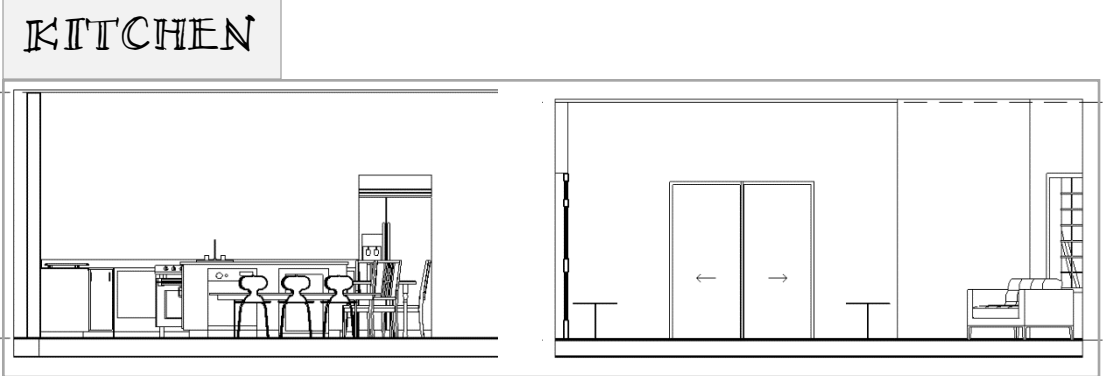
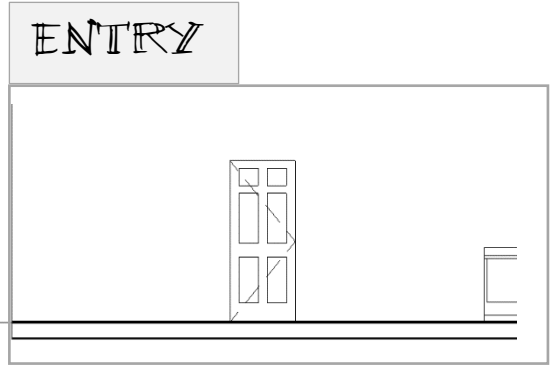
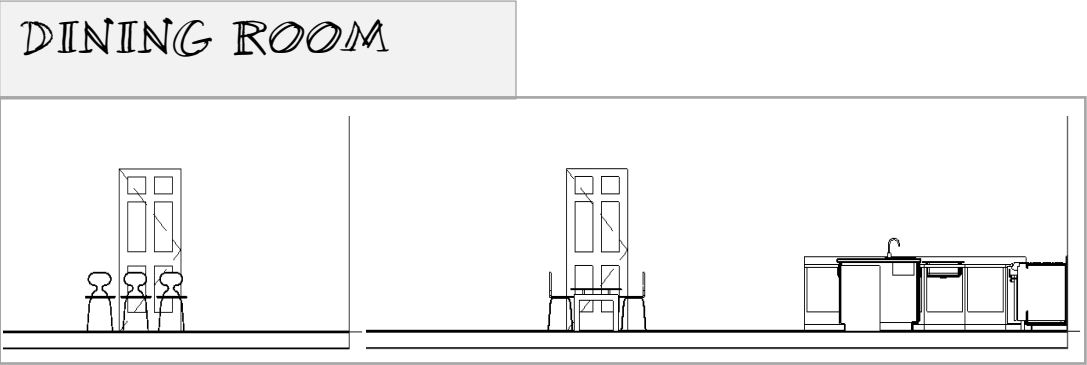
# PRELIMINARY FLOOR PLANS



# PERSPECTIVES

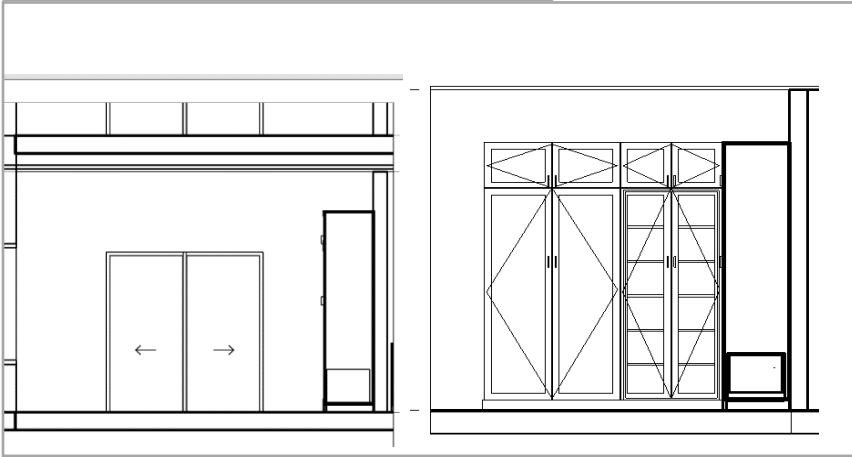


ELEVATIONS

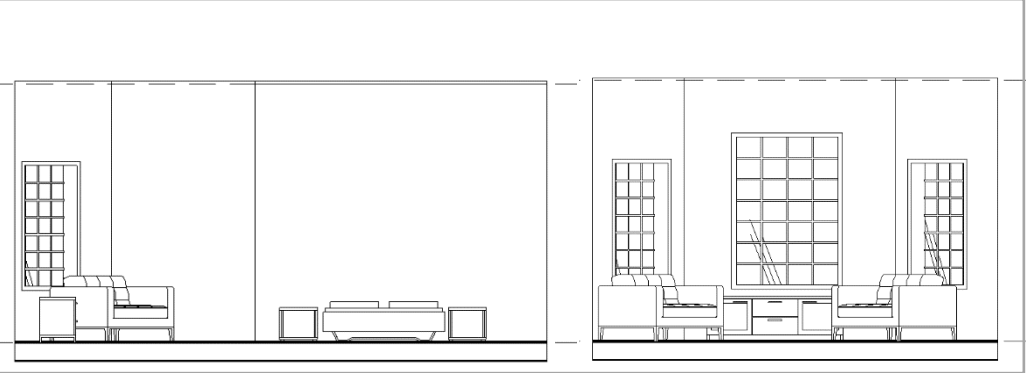


ELEVATIONS

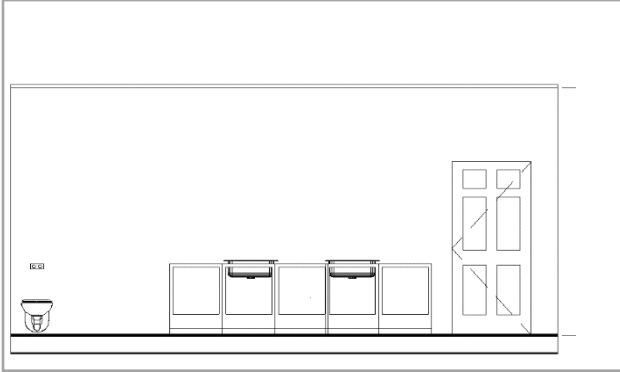
MASTER CLOSET



MASTER BEDROOM



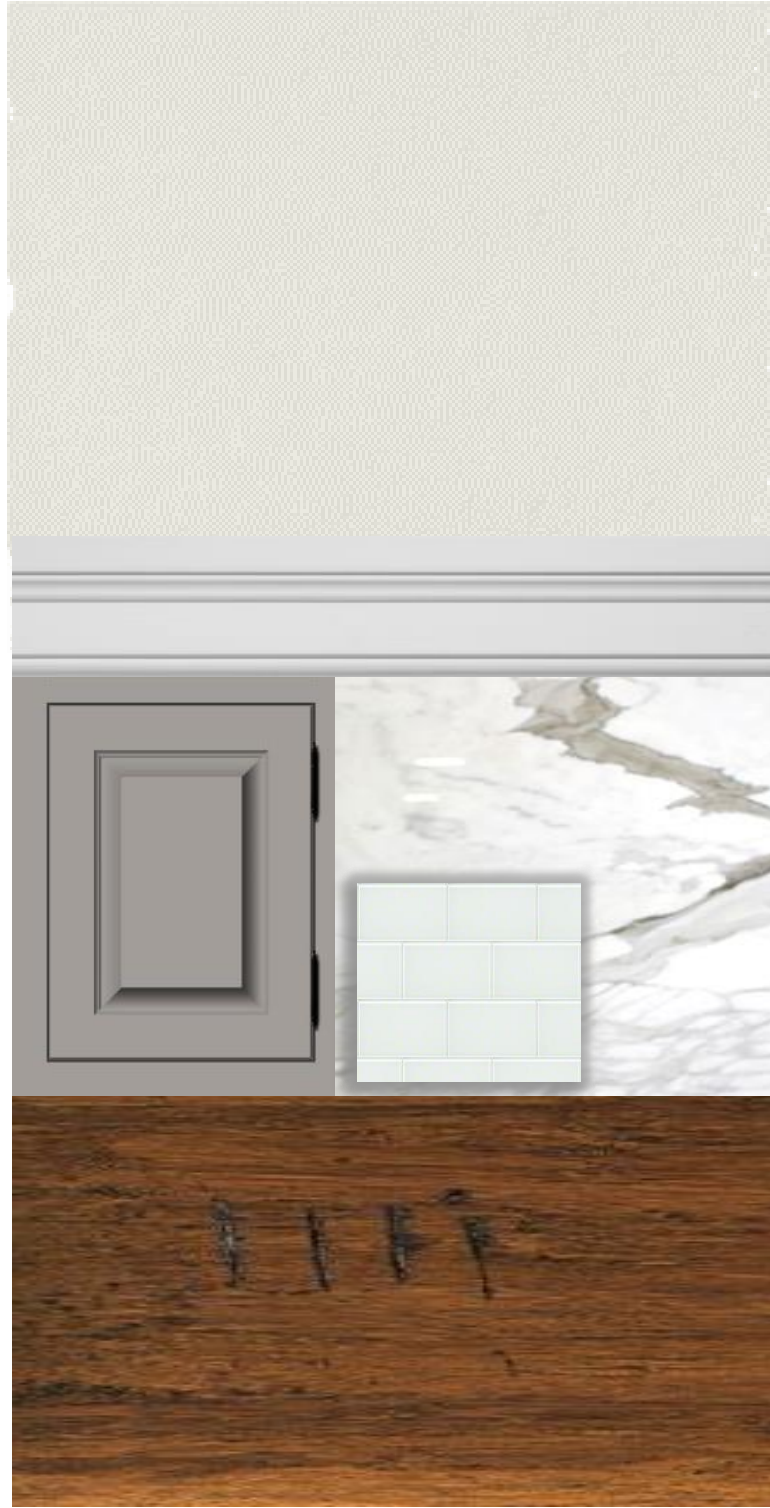
MASTER BATHROOM



GUEST BEDROOM



OPTION 1

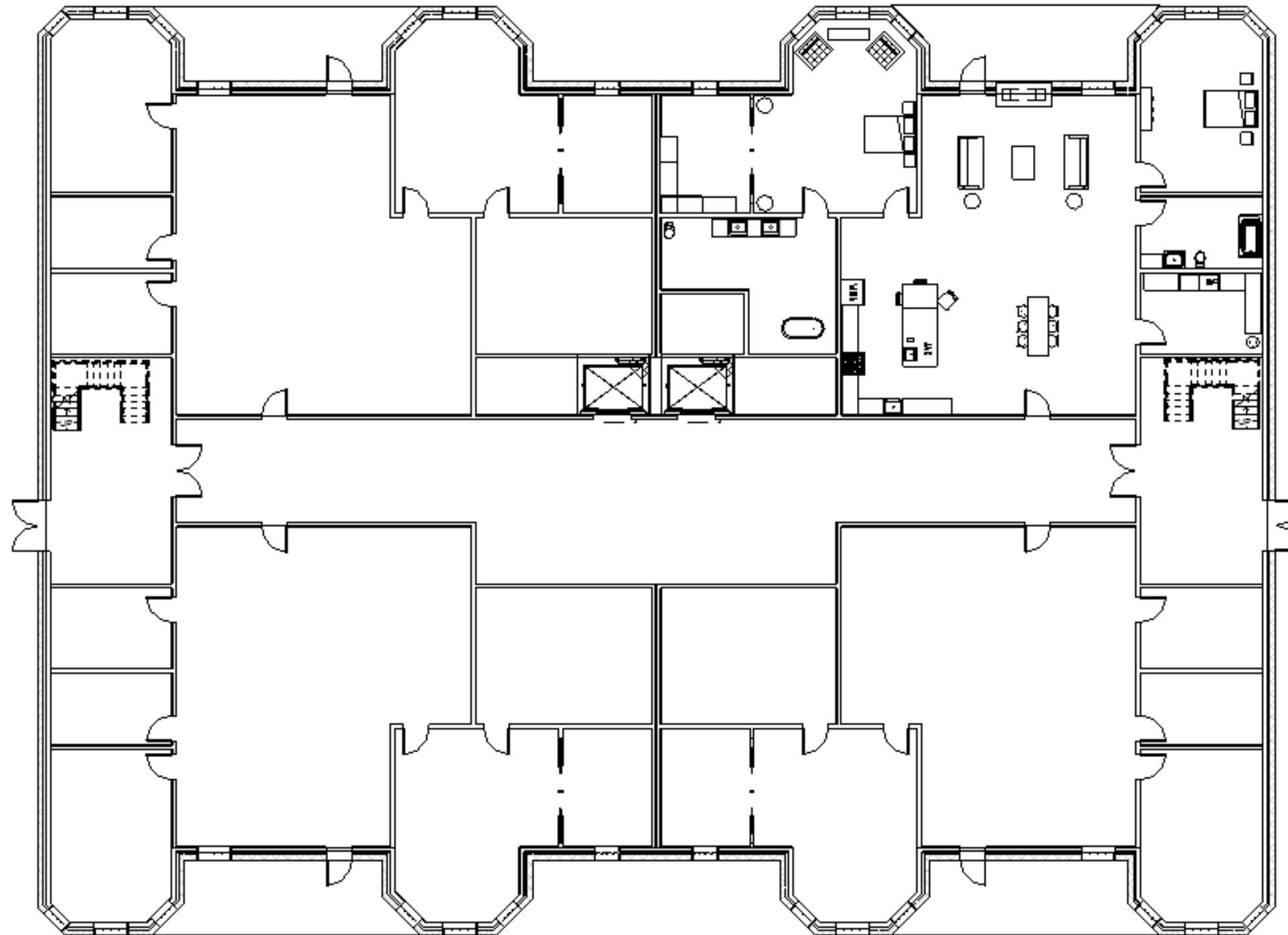


FINISHES OPTIONS

OPTION 2

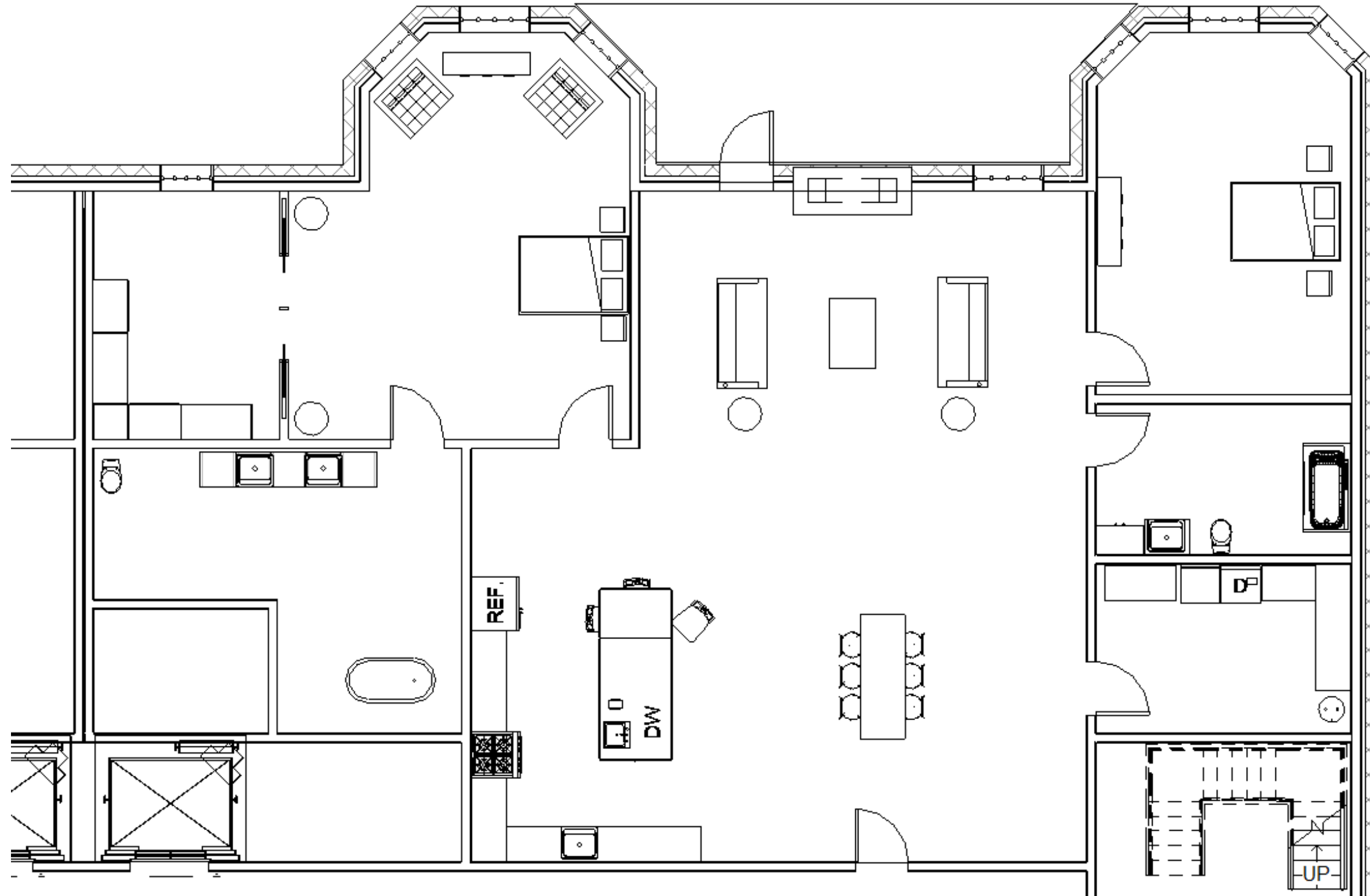


FULL FLOOR PLAN

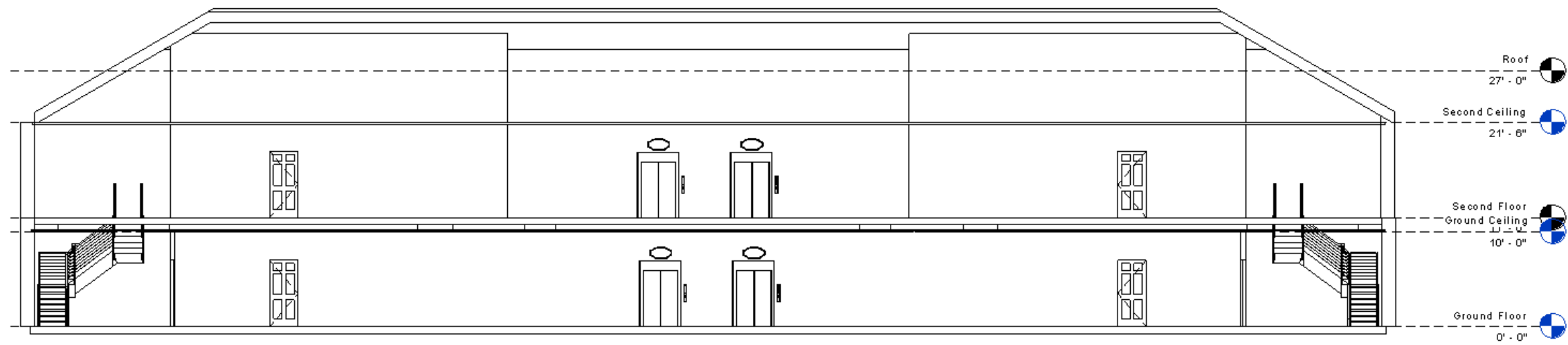
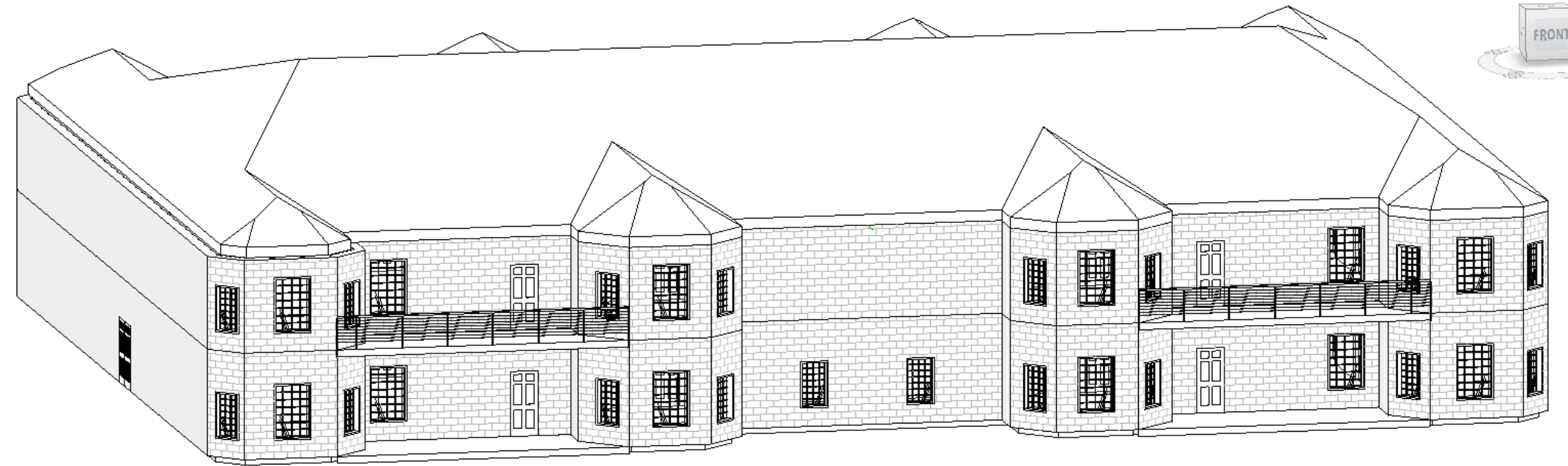




SINGLE FLOOR PLAN  
Major Furniture Included



# MASSING STUDY & AXONOMETRIC VIEW



# UNIVERSAL DESIGN STRATEGIES

