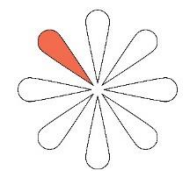




Portfolio 3:
Senior Living Condo Unit

Miho Iba
IDSN 3600/ Fall 2016
Dr. Charles Gustina





Foyer



"Happy Thanksgiving, Pat! Oh, smells so good. How are you doing?" "I'm pretty good. How are you? Food is almost ready. Come in."

Dale and Dana visited the new house of Pat and Fran in Greenville, NC for the first time to celebrate Thanksgiving together. Pat and Fran are their parents in law: they adopted Dale and Dana over 20 years ago.

"Aww, I missed Fran's turkey since last Christmas. Can't wait." "I like this new condo. So nice. They had many troubles at home before. Do you remember that..." Dale and Dana start talking about the memories in Pittsburgh.



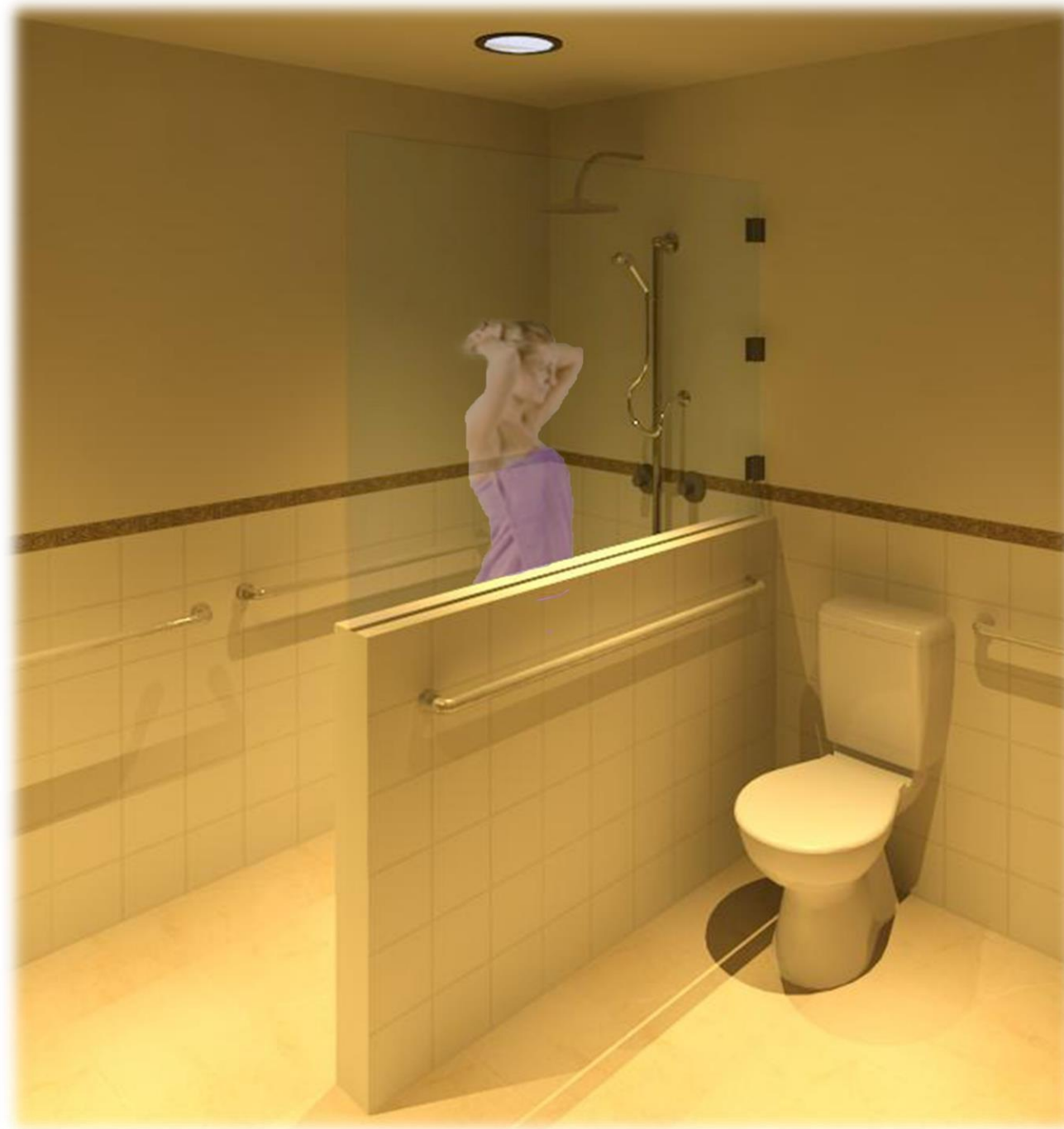
Kitchen/ Dining



"It was... when I was in the 8th grade. Pat was going to bake an apple pie for your birthday party."

"Yea, I remember. My 12th birthday. She stood on a chair to get a pan in the upper cabinet then fell off. I was surprised that big sound and thought they've already started my party with a party popper without me."

"Only Fran was normal and just like "Okay, that's okay. Calm down. You okay." She is always a calm person even if she cannot hear."



Master Bathroom



"It was five... no, six years ago. I got a call from Pat. She was panic and like "Come. Please." I was so worried what happened to them."

"Oh, when Fran fell down at the bathroom. She damaged her knee and used wheelchair for a while. She asked me to tell her how to use wheelchair."

"Oh yea, she was struggling to use wheelchair for the house was small and there were many steps. I just thought you were so great to live in wheelchair in such a tiny house."



Hobby Room



"Pat has complained her work room since I was a little, like "I need more space! You guys don't understand how much space needed for art.""

"One day, I told her that her room is messy. Then she said "It is not messy, just artistically organized for me." That's why I cannot organize stuffs, either."

"But Fran always tries to keep everything clean. Long time ago, Fran cleaned her room when she was out, and Pat got so angry like "Don't touch my work stuffs! They are fully organized!""



Master Bedroom



"When Fran was using wheelchair, she often said that bedroom was the hardest part to go through."

"The carpet was long haired and did not have enough space to turn around. So, I always walked in the bedroom. Well, it was not that hard because the bedroom was also small."



Guest Bedroom



"Do you remember that we used to play
"Sound of Music" onto the bed?"

"Of course, it was my favorite song. I was
always, what's her name... Gretl! Pat loved
playing Maria."

"It was so fun. We singing, dancing,
laughing, and pillow party! I still enjoy
doing 'solo musical' by myself when I feel
lonely at home."

"Are you serious? That's so funny. I really
wanna see that. Fran was always smiling at
us doing those. That made me so happy.
Those were good old days."

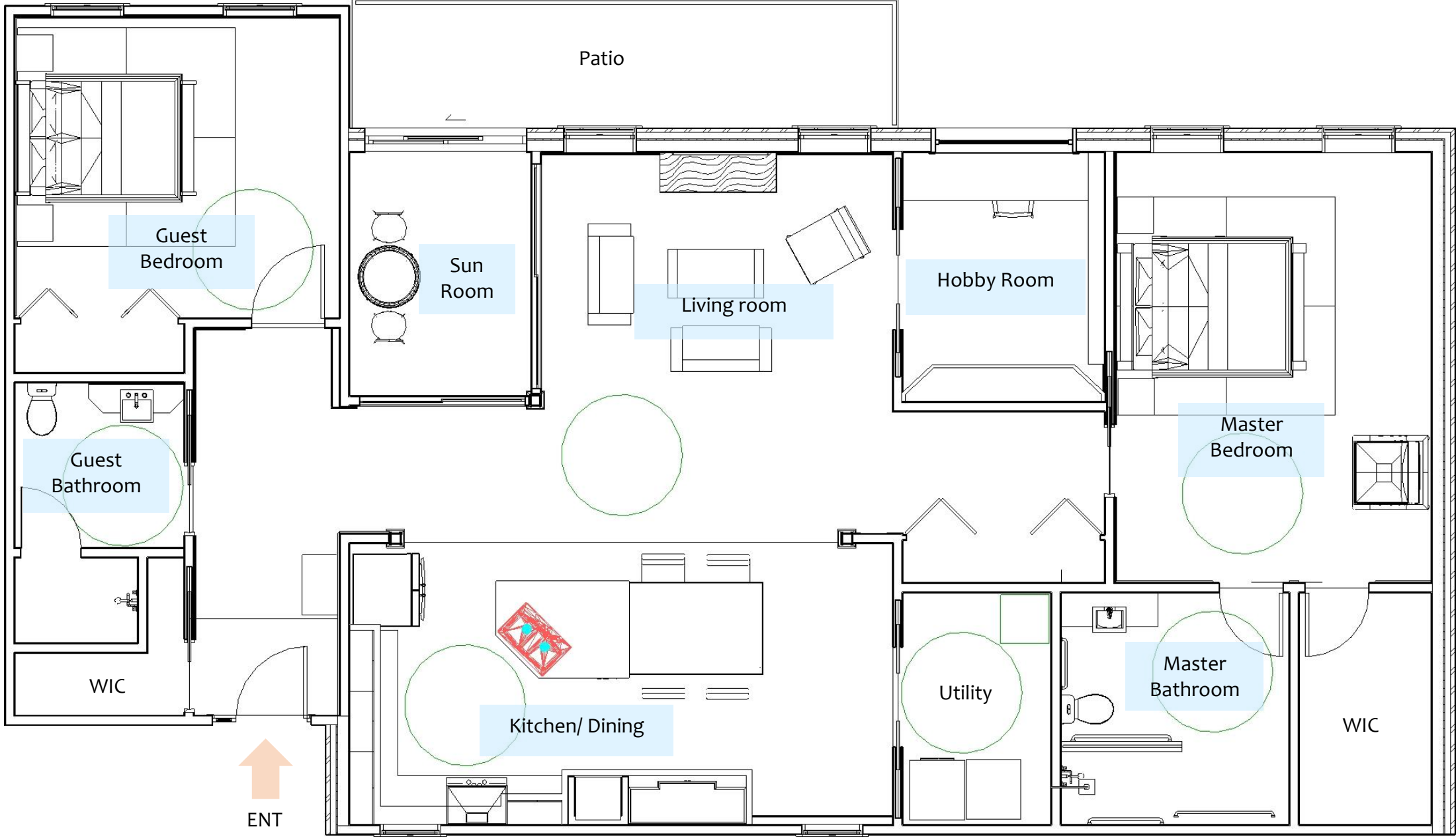


Living room



"When I heard Fran started gardening here again, I was so glad because I liked her talking about flowers and plants when I was younger." "I remember when we grew our first tomatoes. Your tomatoes became twin and looks like a peach." "Hmmm... I don't really remember. I know we grew tomatoes one summer though. But, I do remember we planted some tulips with those pots over there. They were her favorite ones." "Those must remind her of old days in Pittsburgh. After moving here, she sends me a picture of flowers every time the flowers are in bloom."

Floor Plan: Condo Unit



Architectural Finish: Living room

Option A

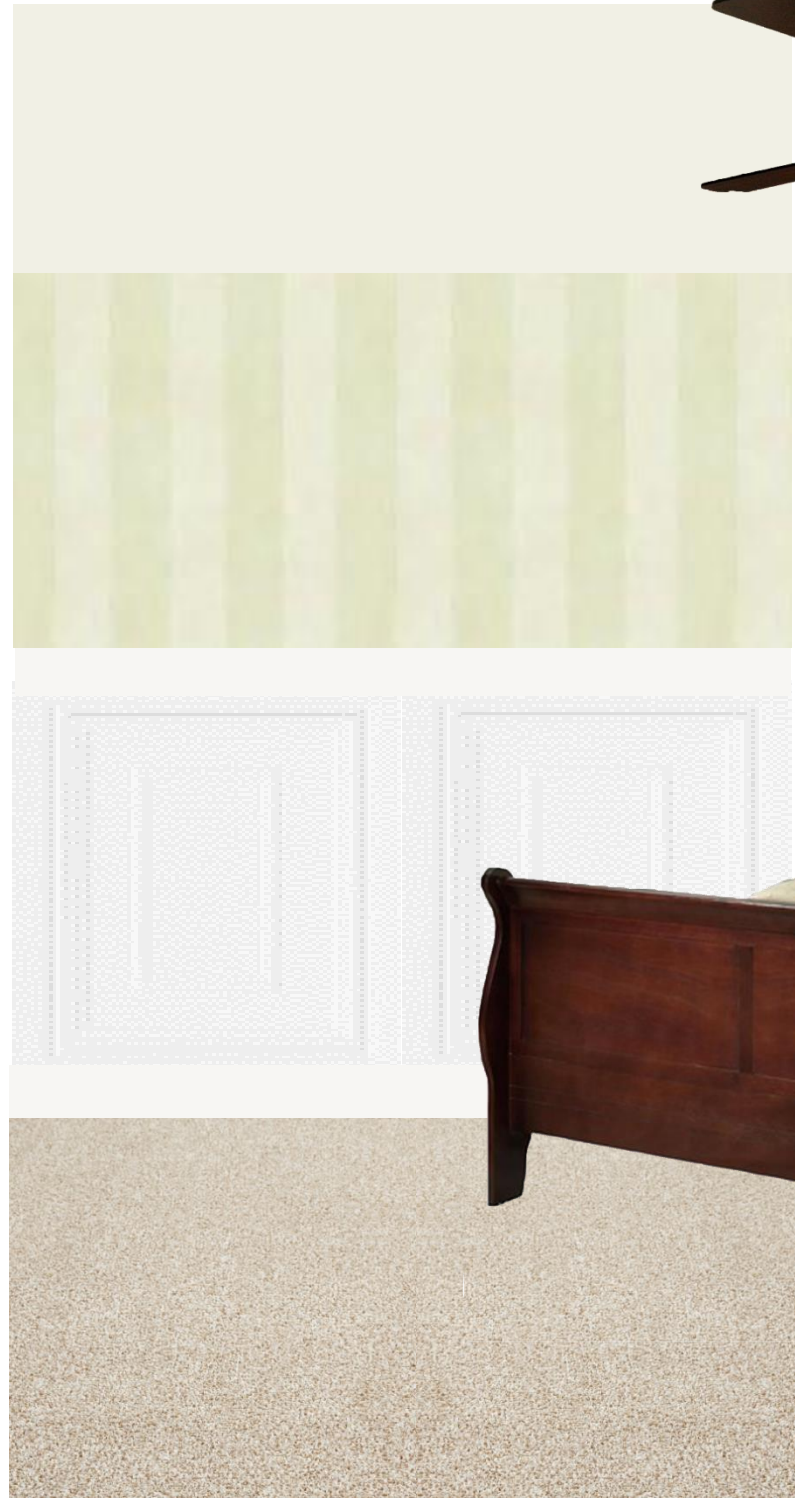


Option B



Architectural Finish: Master Bedroom

Option A

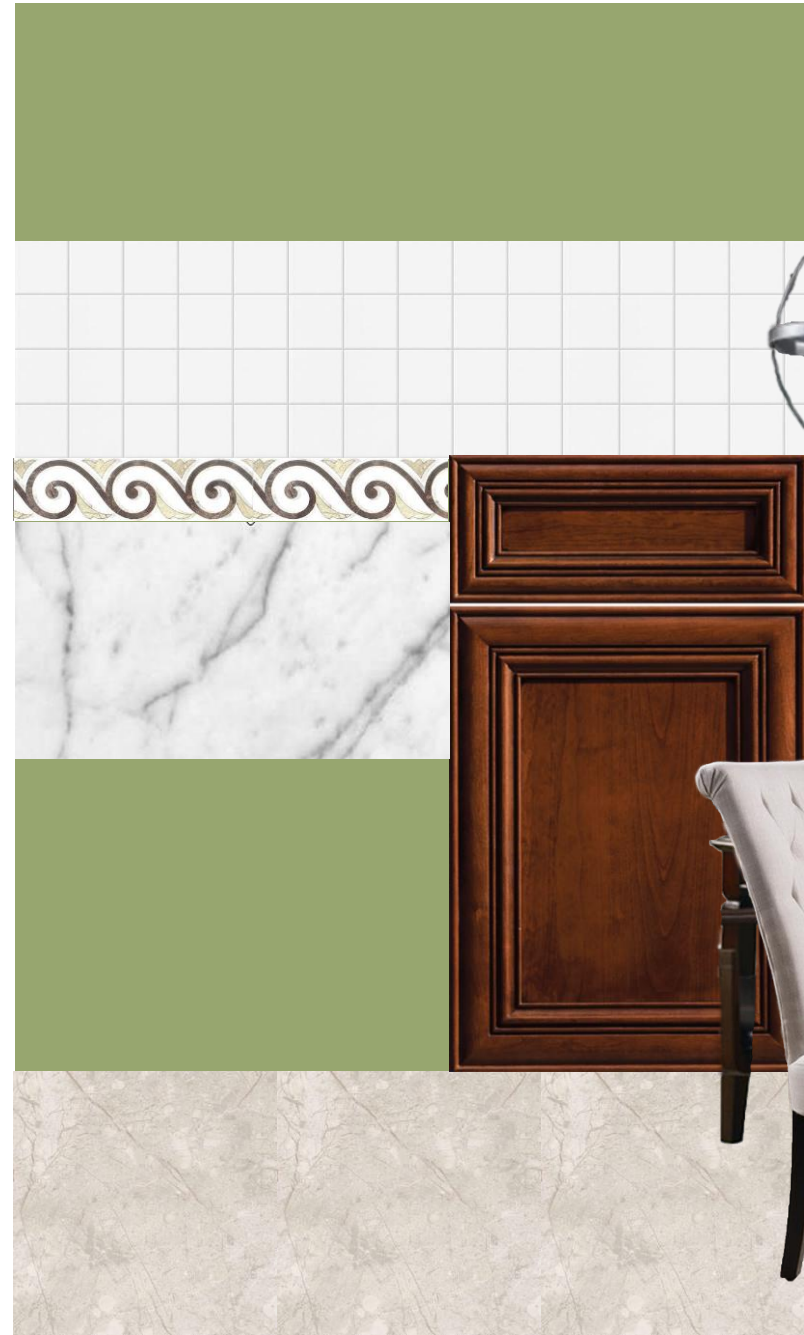


Option B



Architectural Finish: Kitchen/ Dining

Option A

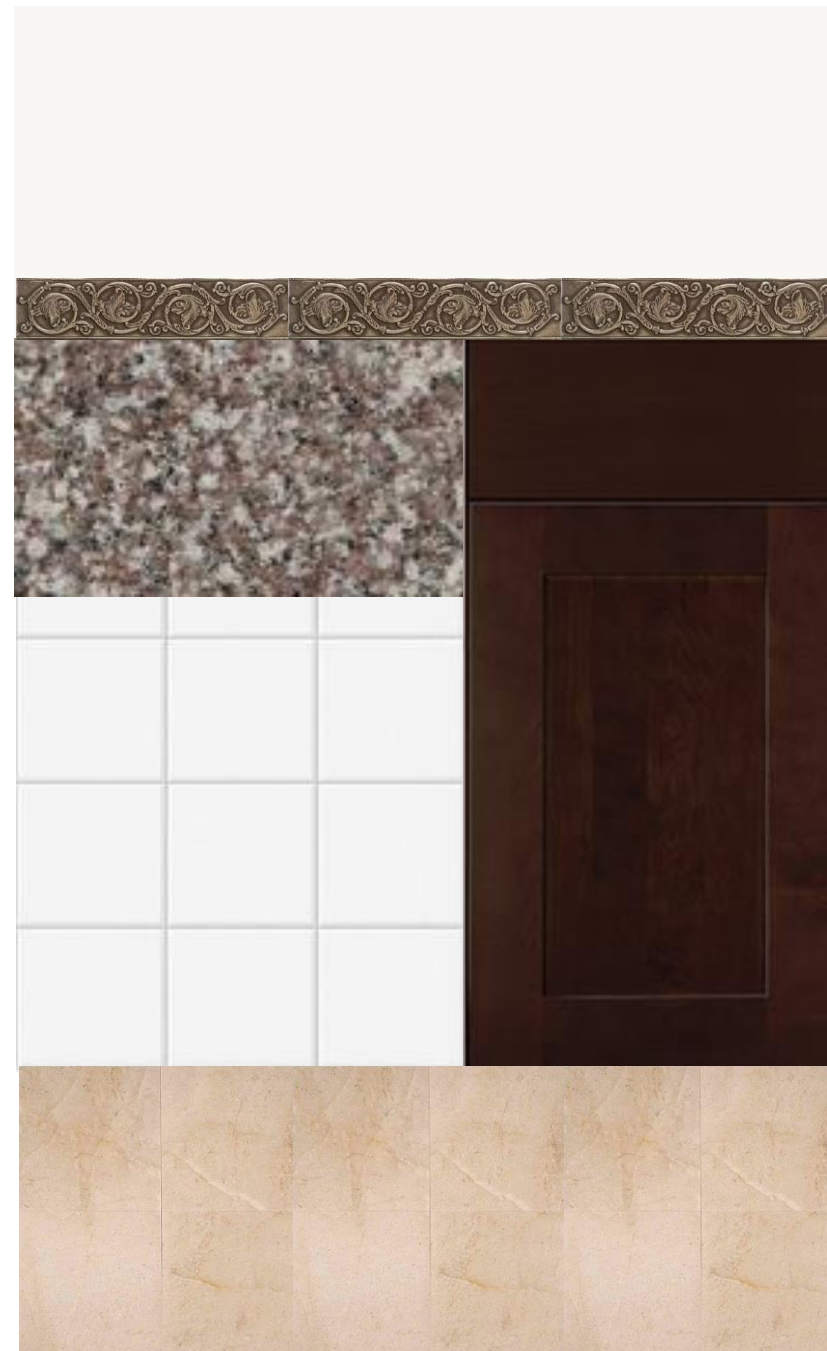


Option B

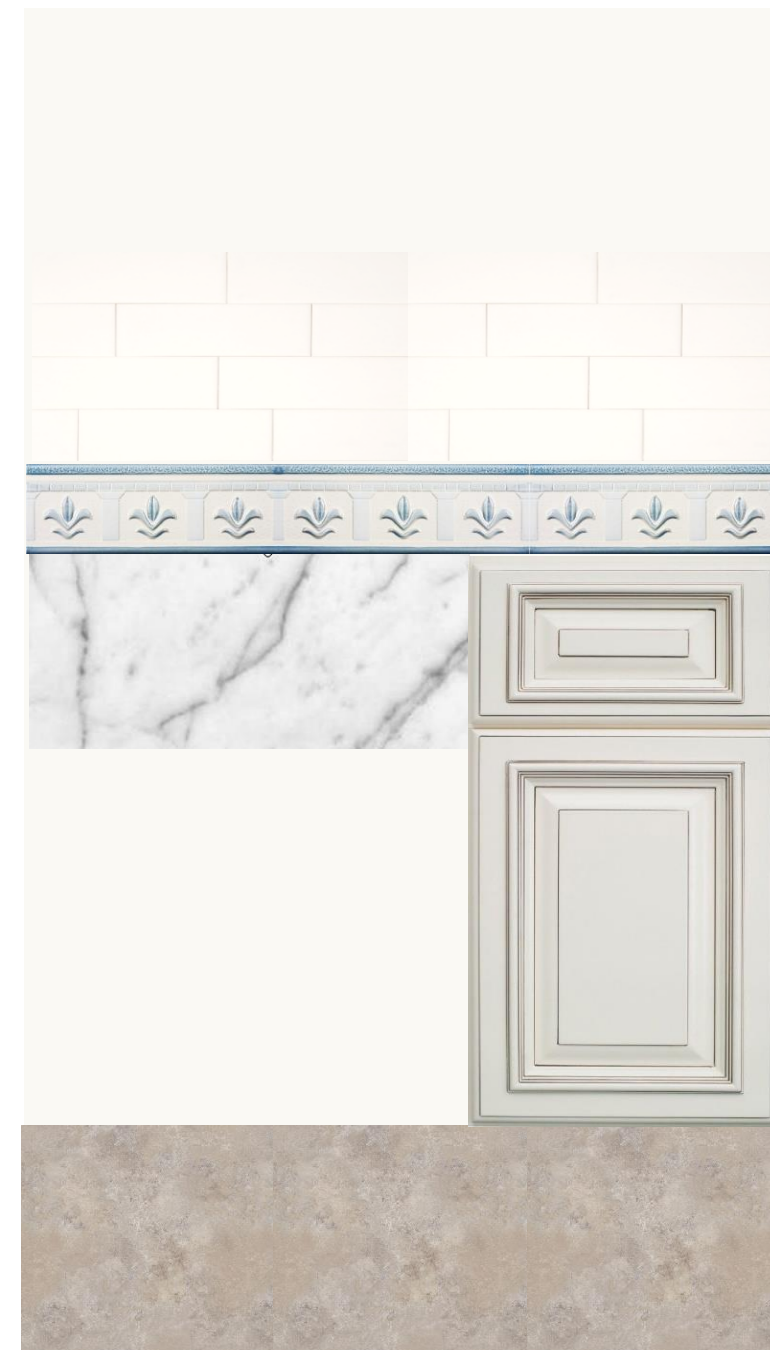


Architectural Finish: Master Bathroom

Option A



Option B



Historic Design Research: Directoire Style

LOUIS XVI STYLE (1774-1793)



FRENCH EMPIRE STYLE (1800-1815)



Brilliant
Simple lines
Light form

Less shiny
Heavy form
Symmetry

Much less gold/ glitter
Simple lines
Light form
Symmetry vs Asymmetry

DIRECTOIRE STYLE (1759-1799)



This design incorporates the following:

ARCHITECTURAL FEATURES

- Sparingly use of gold/ glitter
- Light weight cornice
- Straight lines
- Symmetry

FURNITURE

- Slender straight (slightly curved) legs
- Minimal curving
- Asymmetrical placement
- Accent lighting (e.g. Chandelier)

FINISHES

- Printed wallpaper, solid paint
- Simple mahogany
- Classical patterns & finish (Damask, wide stripe, brocades)

