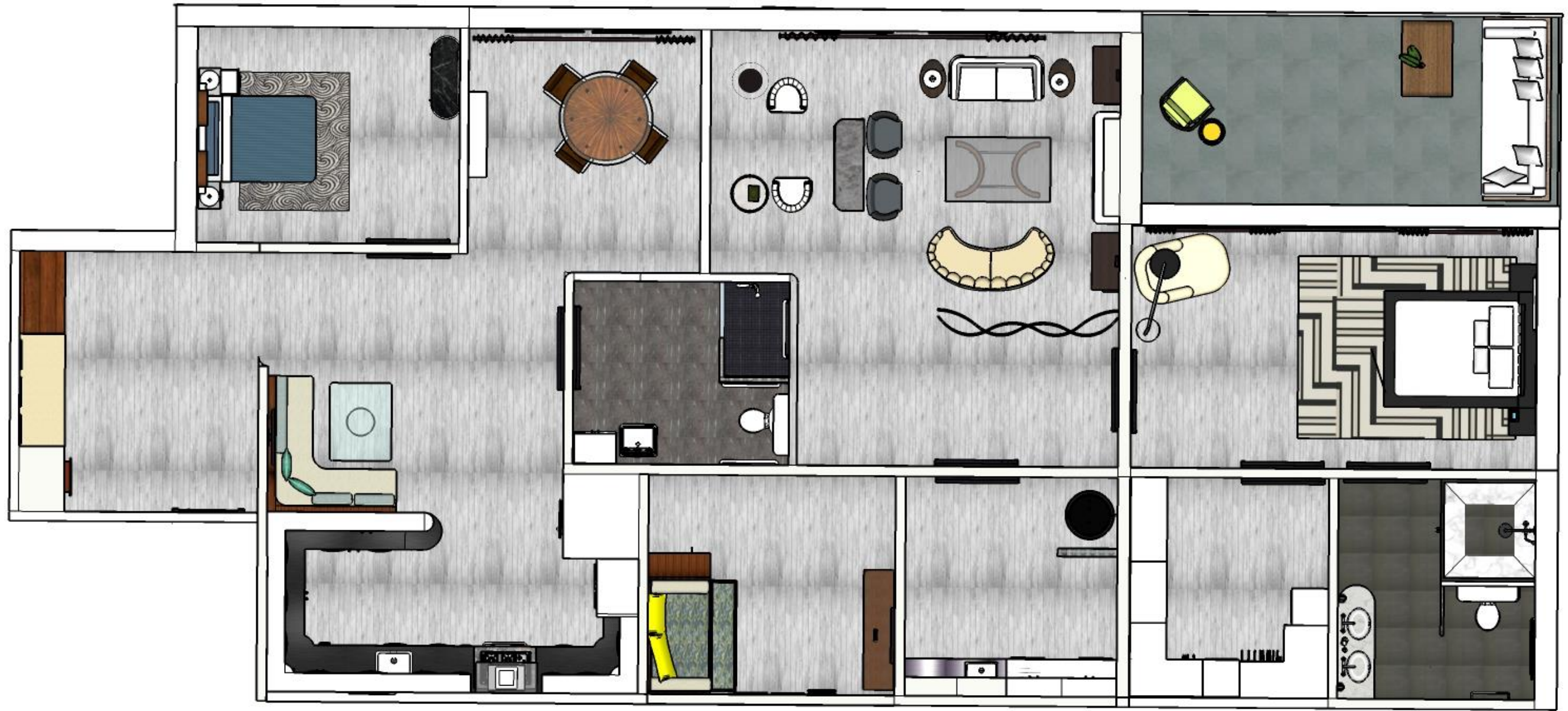


PORTFOLIO 3

SHARESE LAVINE

FALL 2016 IDSN: 3600

FLOORPLAN



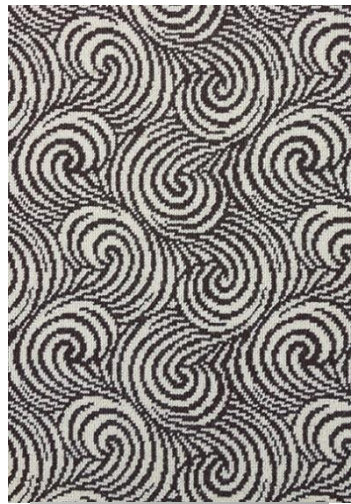
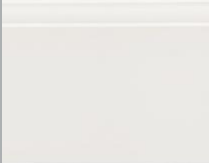
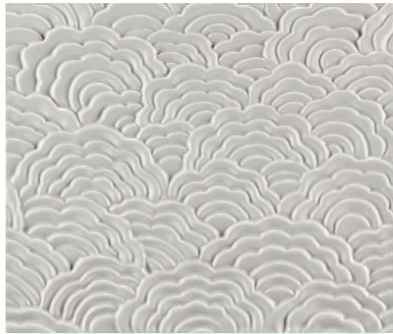
MATERIALS 1st OPTION

MASTER SUITE



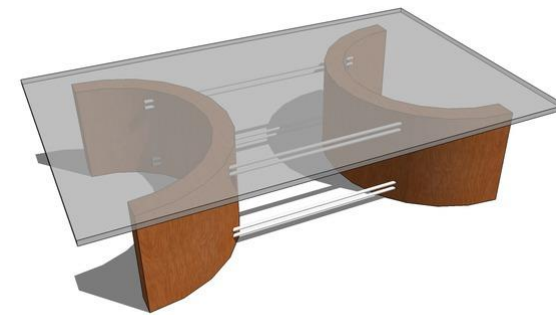
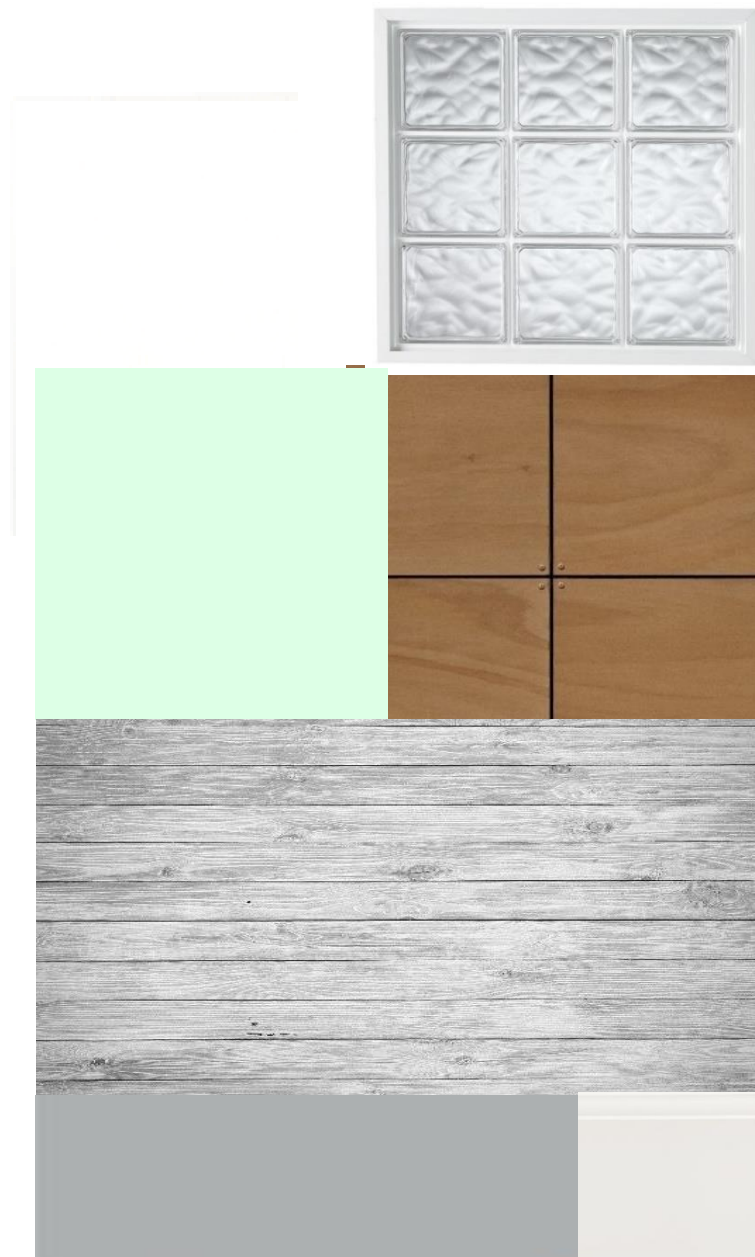
MATERIALS 1st OPTION

GUEST ROOMS



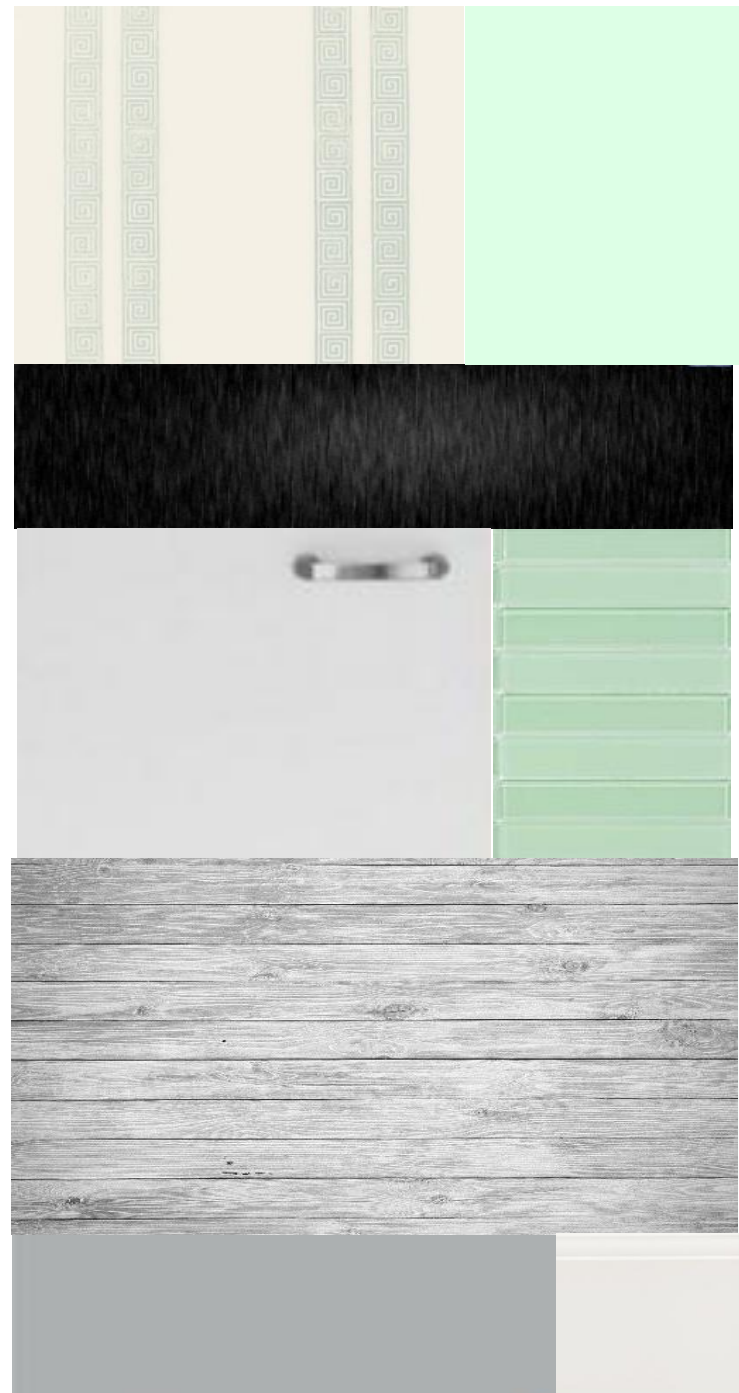
MATERIALS 1st OPTION

LIVING ROOM



MATERIALS 1st OPTION

KITCHEN & DINING



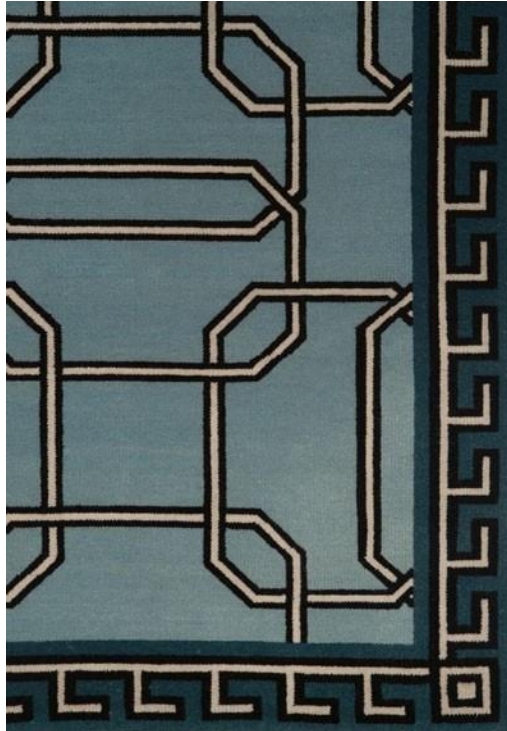
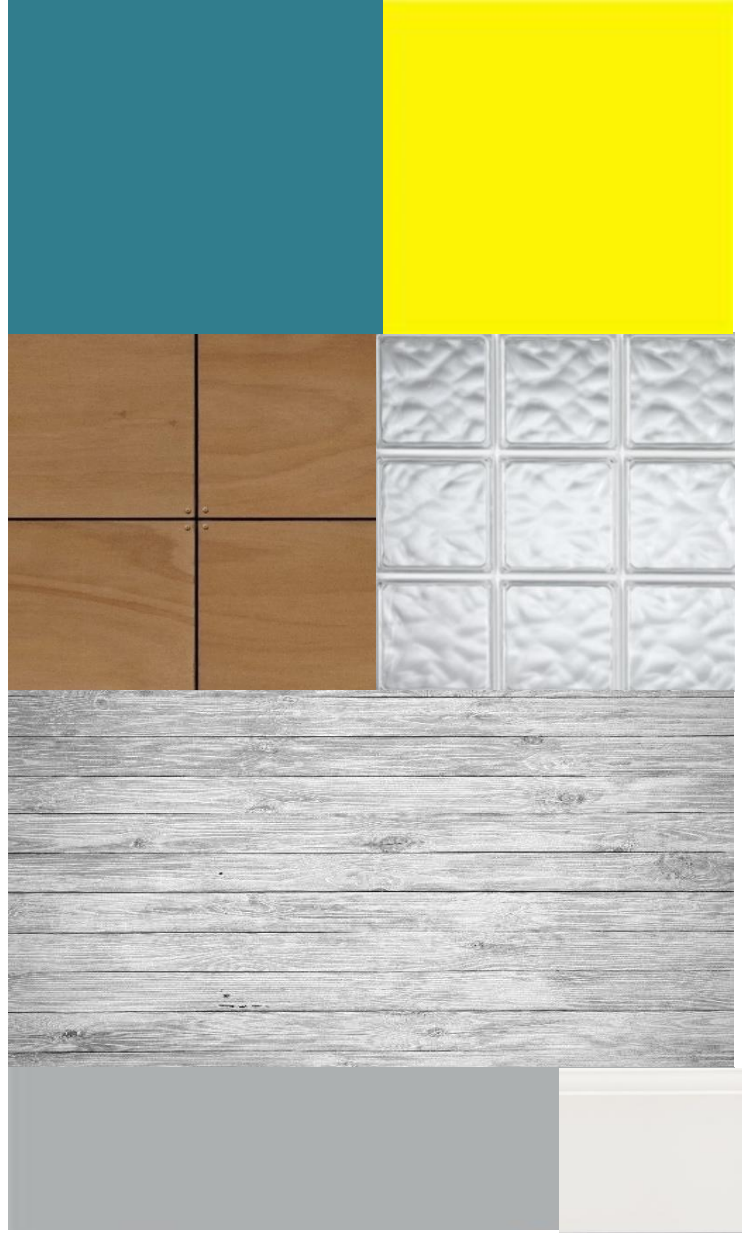
MATERIALS 2nd OPTION

MASTER SUITE



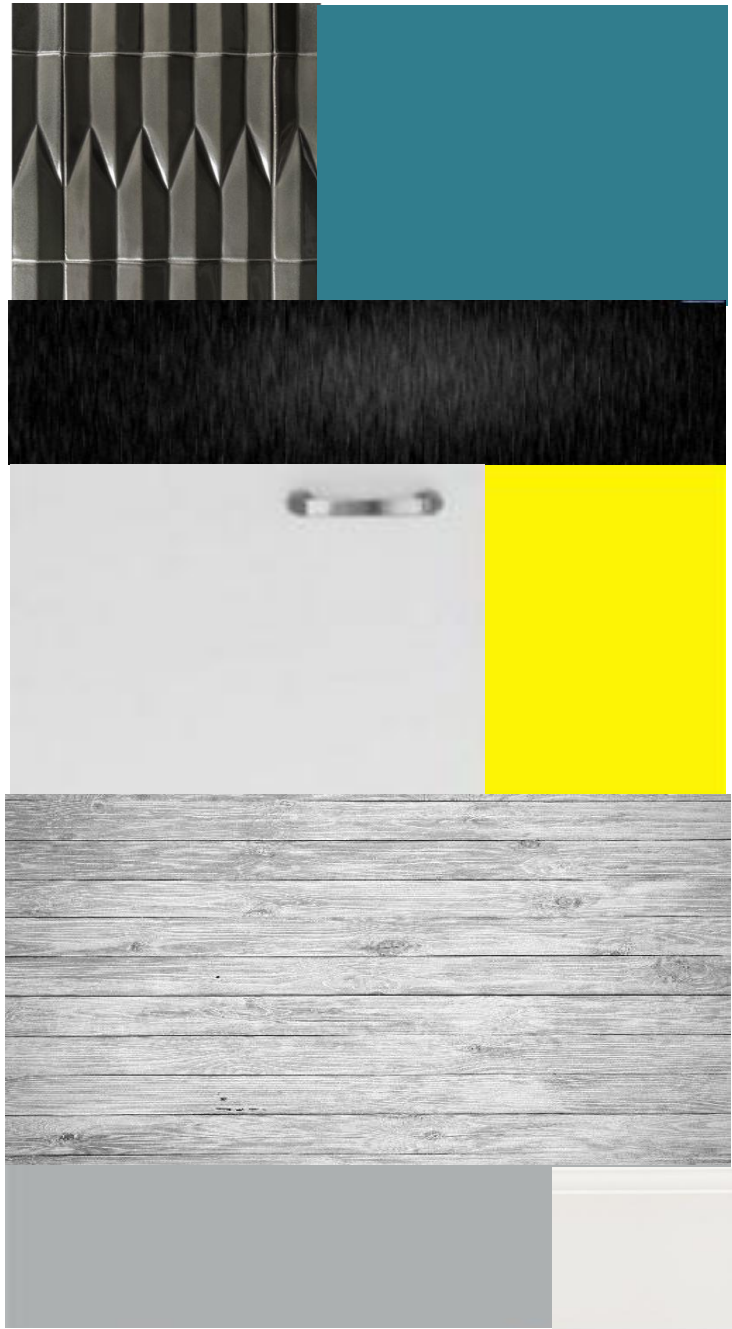
MATERIALS 2nd OPTION

LIVING ROOM



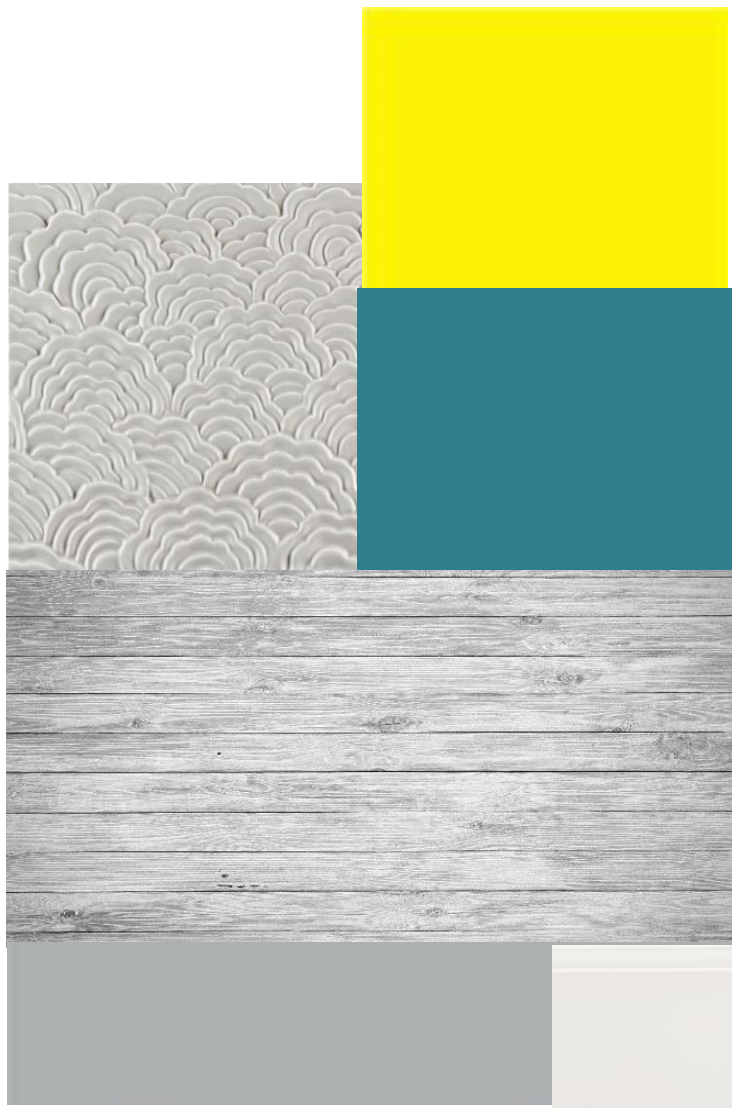
MATERIALS 2nd OPTION

KITCHEN & DINING



MATERIALS 2nd OPTION

GUEST ROOMS



STREAMLINE MODERNE

1930S-1950S

CHARACTERISTICS:

- Horizontal orientation
- Rounded edges, corner windows
- Glass brick walls
- Porthole windows
- Chrome hardware
- Smooth exterior wall surfaces, usually stucco (smooth plaster finish)
- Flat roof with coping
- Horizontal grooves or lines in walls



www.pinterest.com

ABOUT THE STYLE

- A.k.a Art Modern
- Reaction to Art Deco
- Popular in commercial design
- Aerodynamic concepts
- Sleek minimalist style



HISTORICAL PRECEDENCE

Used in interior architecture, furniture, and finishes



www.messynessychic.com

www.rejuvenation.com



- Living room incorporates portholes in a soffit
- Kitchen has rounded cabinetry and island which defines the style
- All rooms have dark trim contrasting with bright walls to help with aging eyes
- All rooms have colors that define the style
- Stacked wood flooring reminiscent of boat deck, easier on the feet and back
- Built in dinette and fireplace with glass block
- Curved walls and furniture
- Master bathroom contains framed walk in shower
- Guest bath contains industrial appliances
- Used in interior architecture , furniture, and finishes

STORY BOARD



"All right, where to begin?", thought Pat after seeing her wife Fran off for the day. "Thanks to the recent move from Pittsburgh, PA, I no longer dread moving around throughout this new home. The floor plan is so open; I do not have to worry about bumping into walls."



Pat walked over to the extra guest room to see if her daughter Dana was still sleeping. After Pat checked she went to the kitchen. To see if she could figure out what to do with her day.



"I just love how we decided to incorporate the dinette into the kitchen. Our daughter Dana is an amputee veteran so to be able to sit and watch T.V in the kitchen has made life a lot easier for us all." Pat stops and gasps. "That's it!" She thought. "I should start cleaning. Maybe when I am done I will look at some old photos to welcome the past to the present."



Pat set out to clean the condo, starting with the entry, then to the dining room. The vitrine beside the table was bought by the couple at an antique show back in Pittsburgh and was a must to incorporate in the new home. Pat began reminiscing about that day after wiping the table. She stood looking at the rest of the home when suddenly she paused. She looked around discombobulated, shook it off as nothing and proceeded to the living room.

Upon straightening up the furniture, Pat gazed at the mantel. The mantel elevation is a remake of a wall in the office lobby that Pat and Fran first met in. The curved settee was given to the couple as an anniversary gift from their son Dale. The nostalgia kicked in and Pat began to search for the photo album. She paused again, this time for ten minutes. She was confused and was still looking around.

"Mom! What are you doing?" It was Dana who had just come over from the guest room. "I see that you were cleaning but you look puzzled. What's wrong?" Unbeknownst to Pat, she had just experienced her first encounter with Alzheimer's disease.





Everyone had seen signs of the disease from time to time but it had not yet fully impacted the family. Pat and Fran had agreed to design the condo in the architectural style streamline modern in hopes that they could forever live in their memories.



The master bathroom has tile reminiscent of a pattern on a homemade scarf that Pat received from Fran back in the 70s. The choice to continue the glass block in the bathroom was thought to help the couple's aging eyes contrast the shower from the toilet compartment.



Pat had said to Dana, "I was looking for something but all of my cleaning supplies are right here". Dana knew it was not her place to tell her mother about how the family has seen the signs of Alzheimer's in Pat. After all, Pat is frail. For now, Dana would laugh it off with her mother and return to her room.

Pat finished cleaning her bedroom and looked around once more, this time at the architecture. There beside her bed was the photo album. She thought to herself, "I wonder when was the last time this crossed my mind?".