

Residential Senior Living

Condominium

Sara Williamson

Portfolio 3

IDSN 3600 - Fall 2016



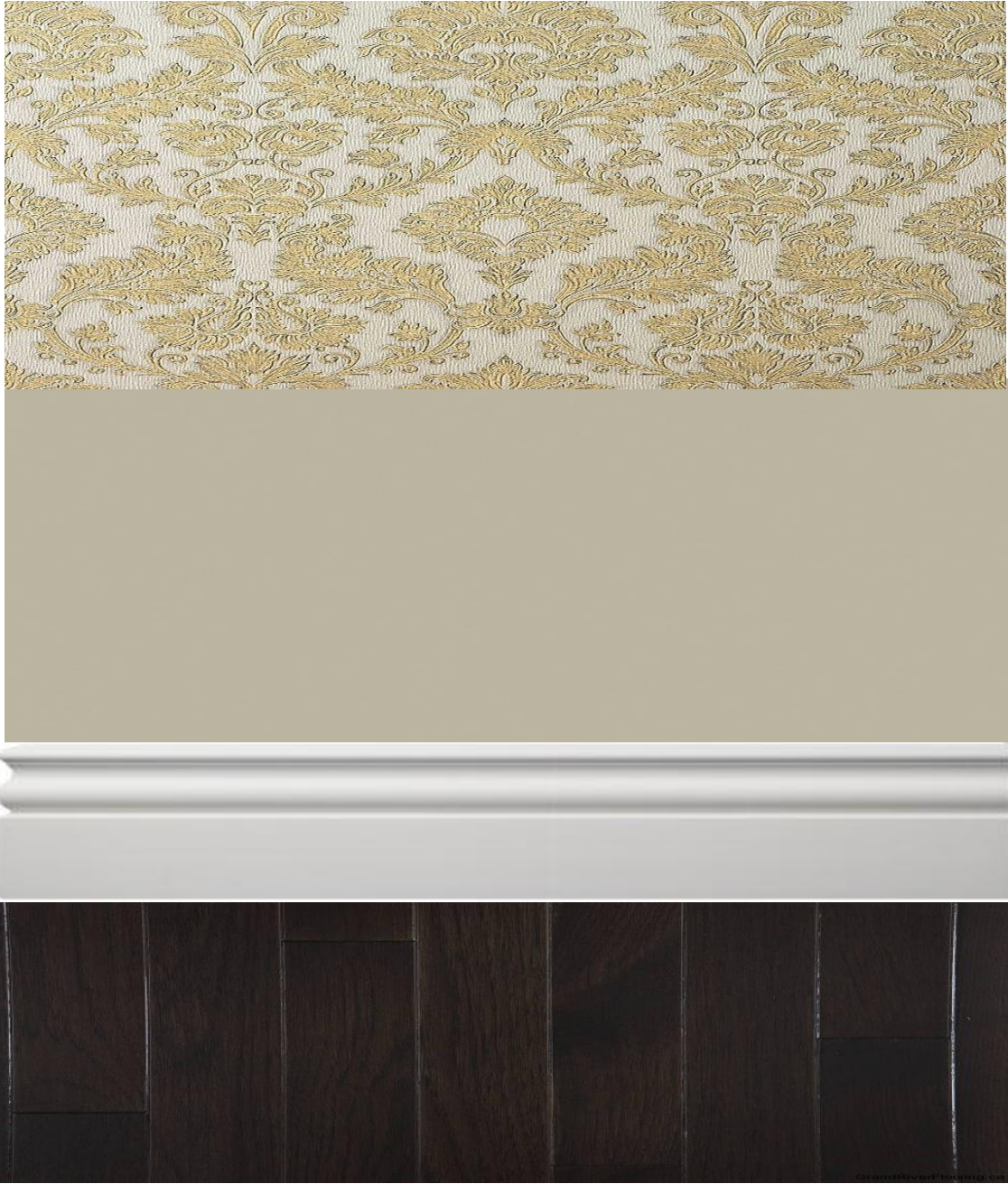
I met Fran when we were 18. Both living in Pittsburg, Pennsylvania, we met the summer after we both graduated high school. Fran's family had just moved to Pennsylvania there from California after her father's job had transferred him. I had just gotten a job at the local seafood restaurant – a summer job just to make money before going to college in the fall. Fran started working there the week after I did.



Both of us were new to waitressing, so we really bonded while learning this new job together. The more I got to know Fran, the more I liked her. She was so interesting to me; she was very smart and kind to everyone.

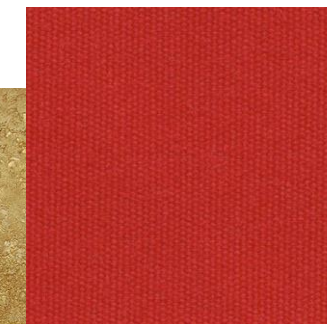
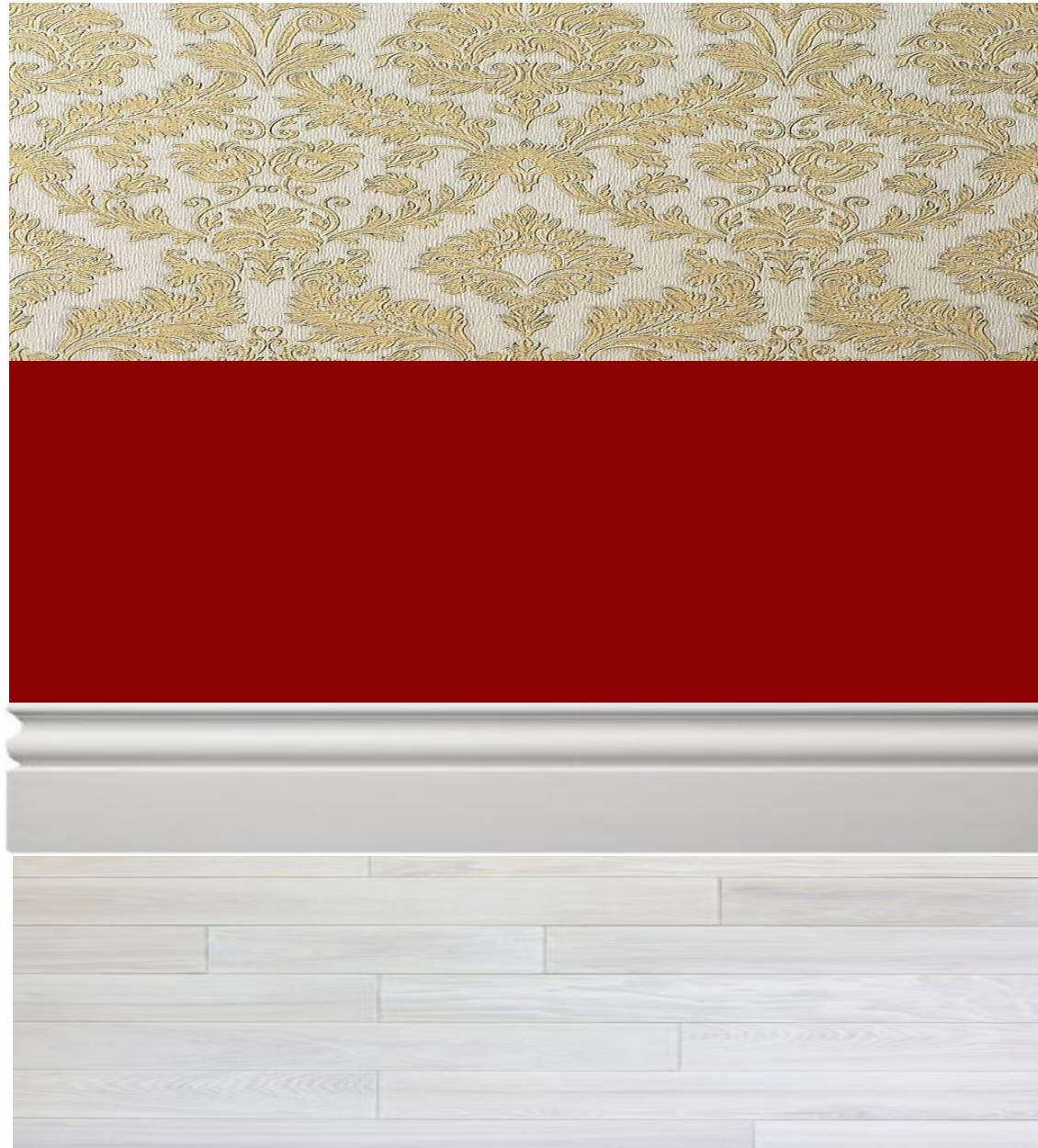
Option One

Living Room:



Option Two

Living Room:

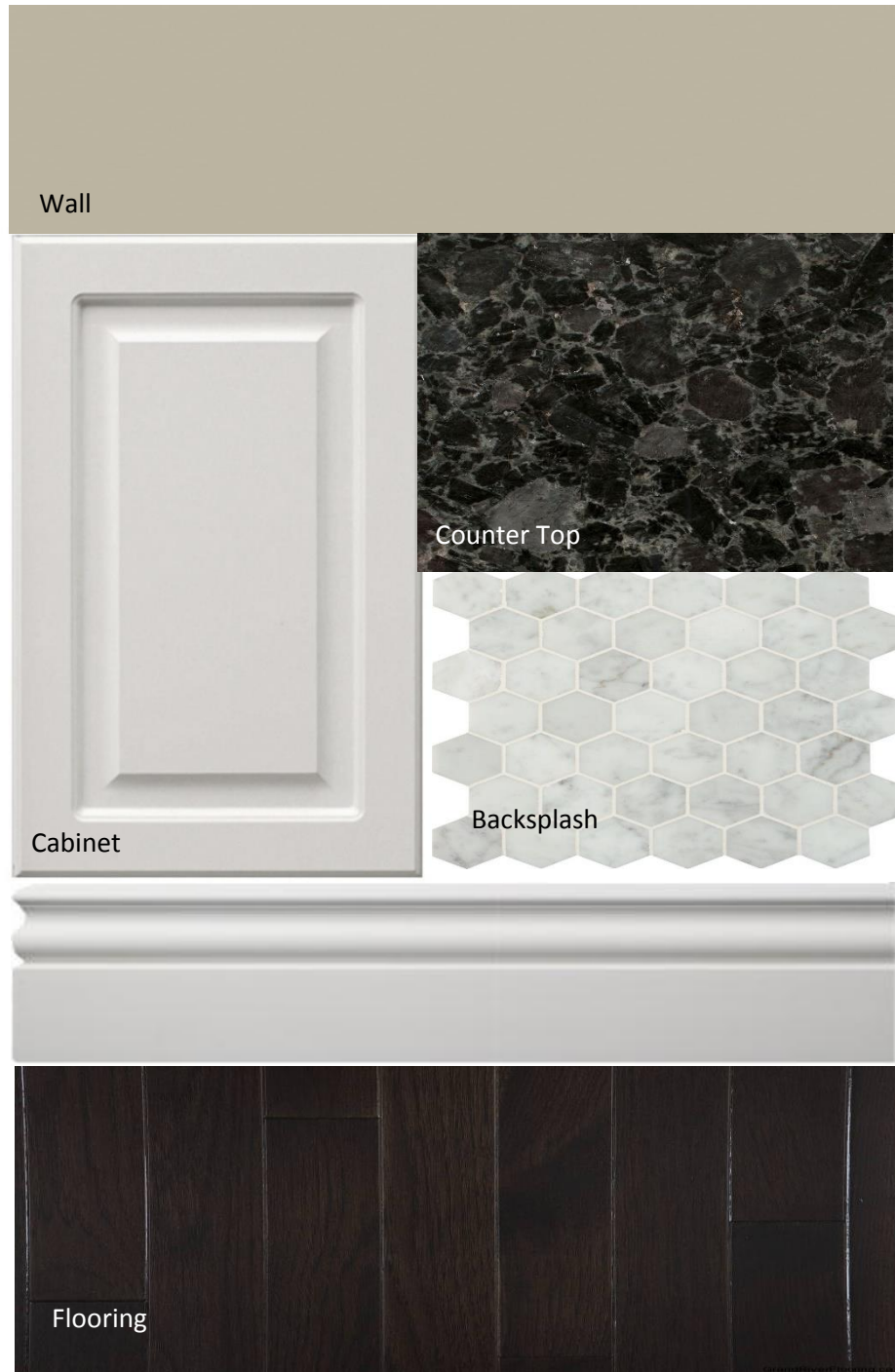




Fran also has a disability. She is fully deaf but she never let that hold her back from anything. I quickly learned sign language so that I could communicate with her easily. By the end of that summer, we were inseparable and we spent every day together.

Option One

Kitchen:



Option Two

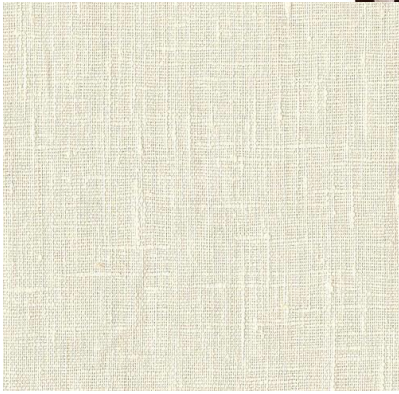
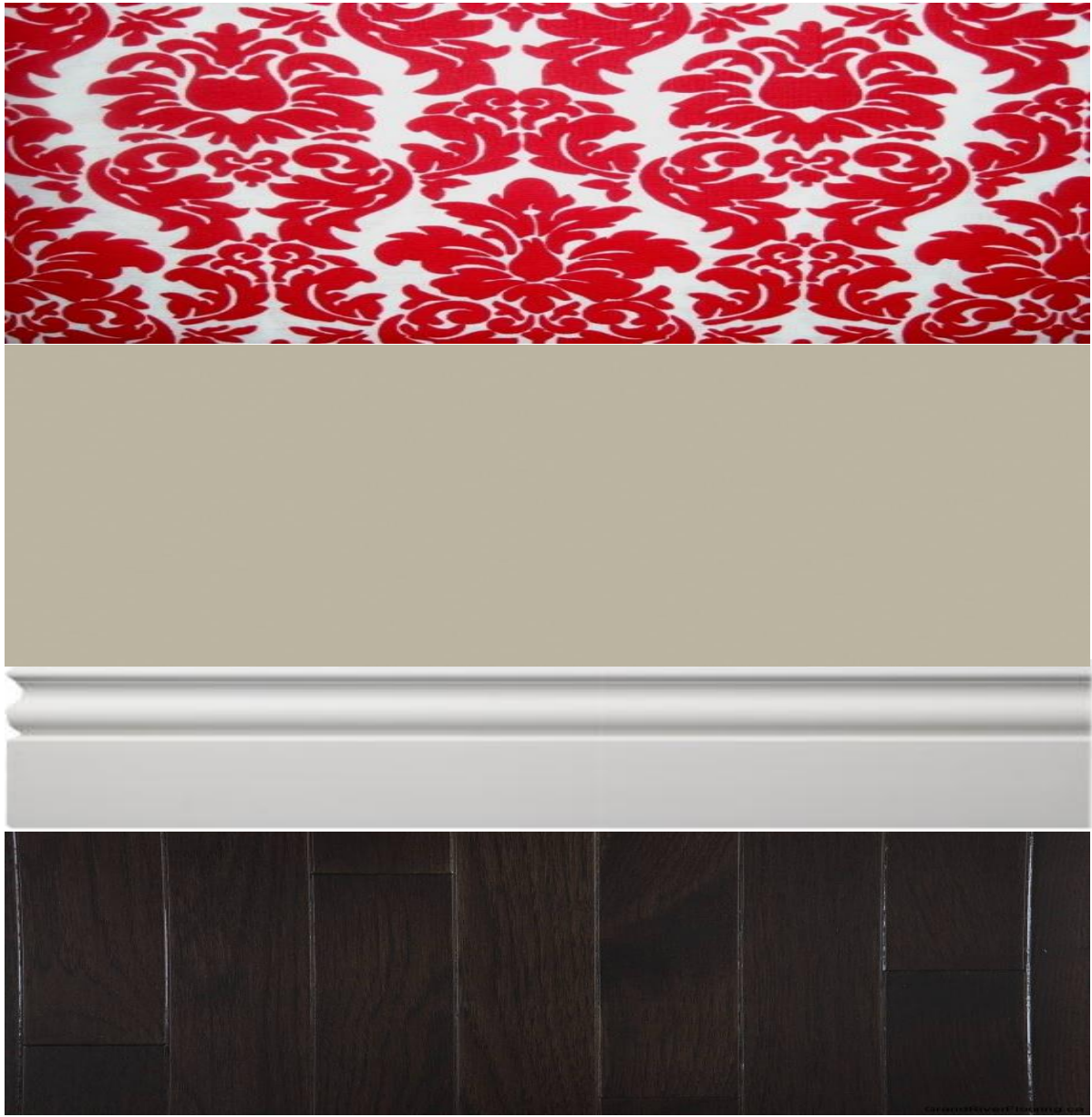




As college started to approach, I became fearful that our relationship would not be able to withstand the distance. I was moving to North Carolina for college to study interior design and she was staying in Pittsburgh to study molecular physics.

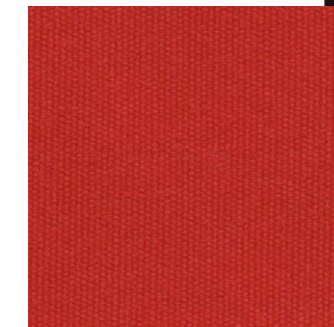
Option One

Dining Room:



Option Two

Dining Room:

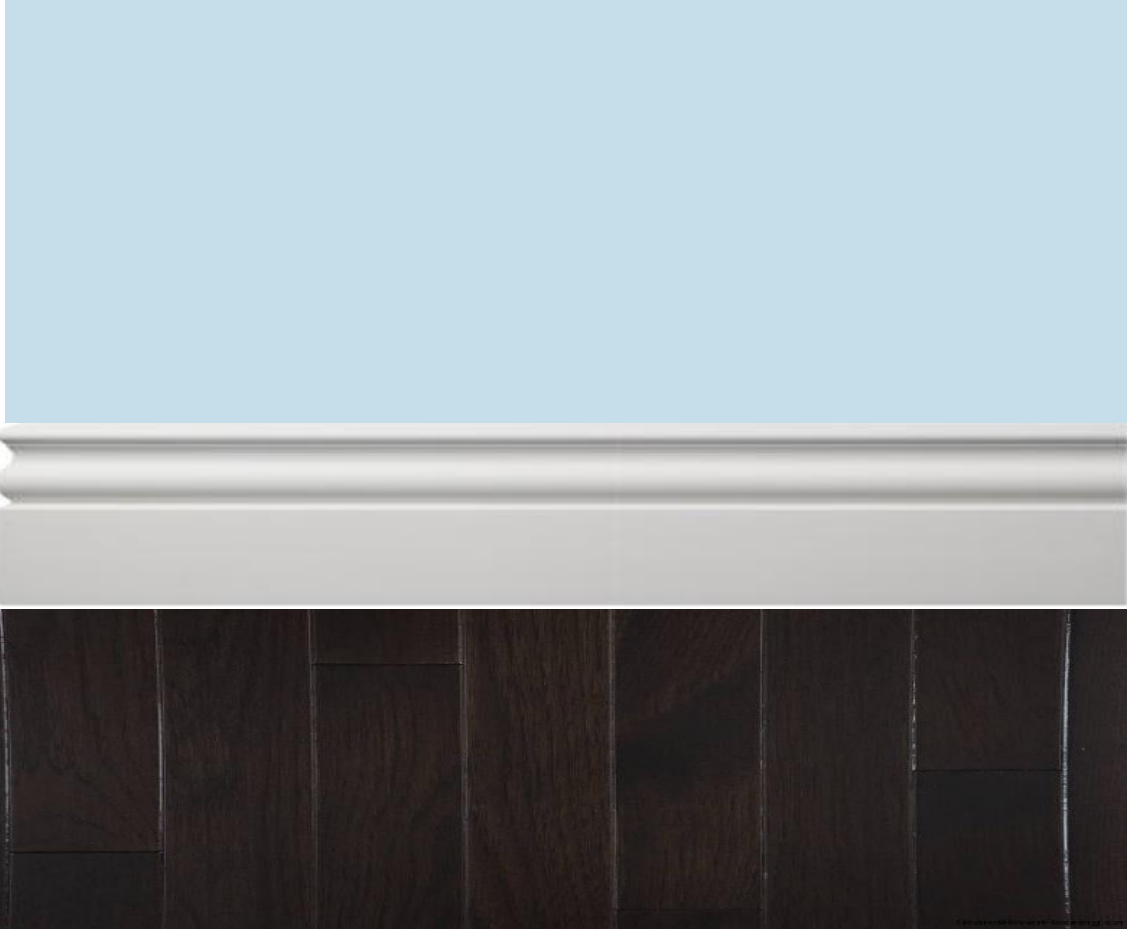




I couldn't imagine going from being just down the road from her to being eight hours away! When it was time to say our goodbyes, we decided that we would give a long-distance relationship a try.

Option One

Guest Bedroom:



Option Two

Guest Bedroom:

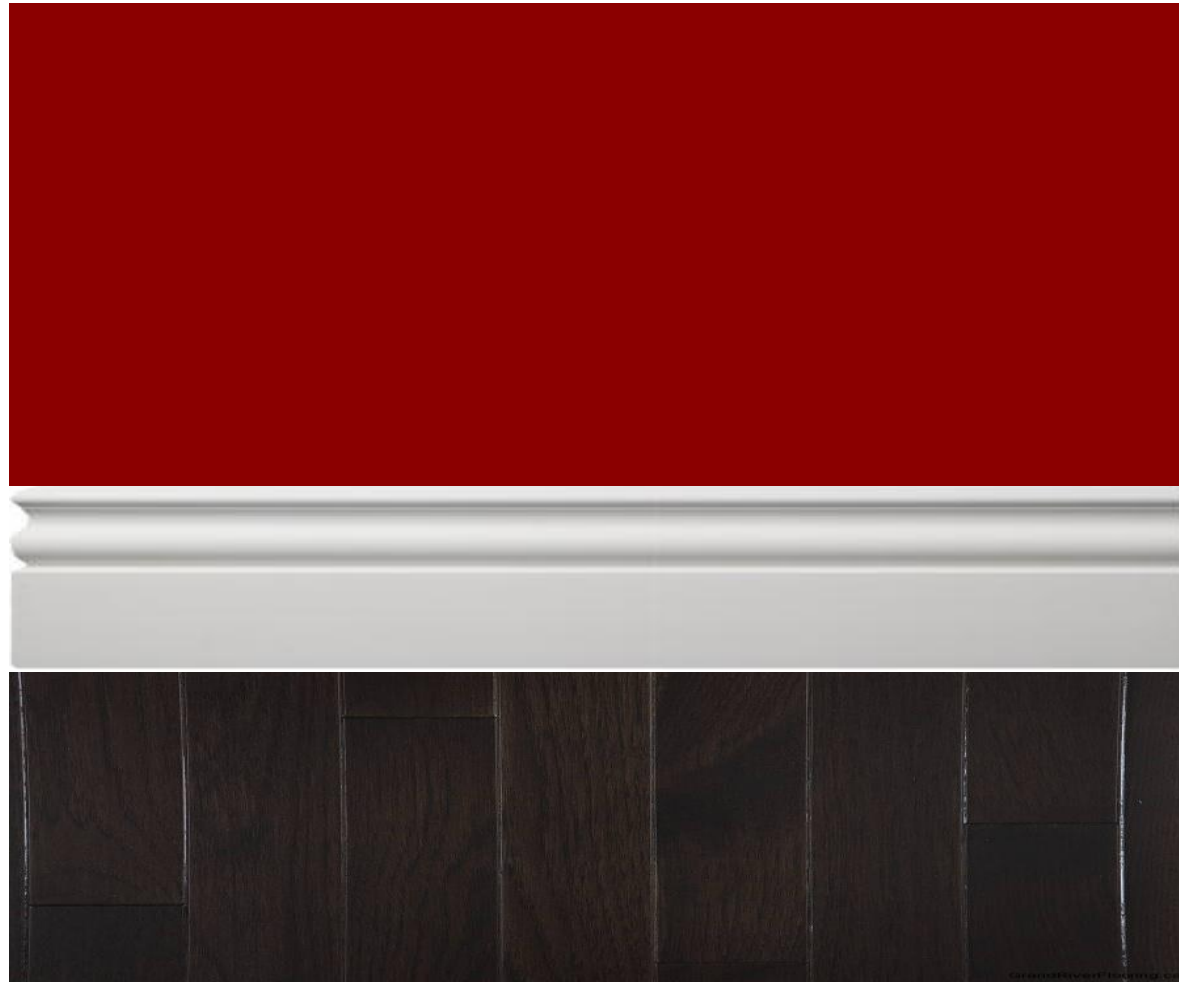




The distance was definitely hard to get used to and I missed Fran dearly. In the grand scheme of things, those four years of college flew by. Though the distance was trying at times, it was all worth it in the end.

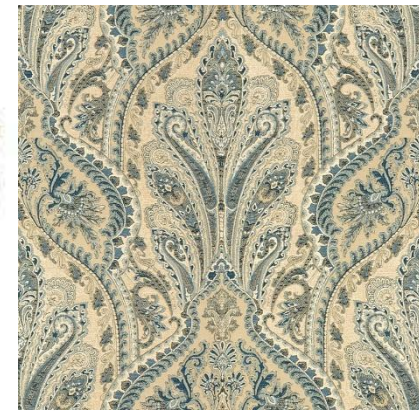
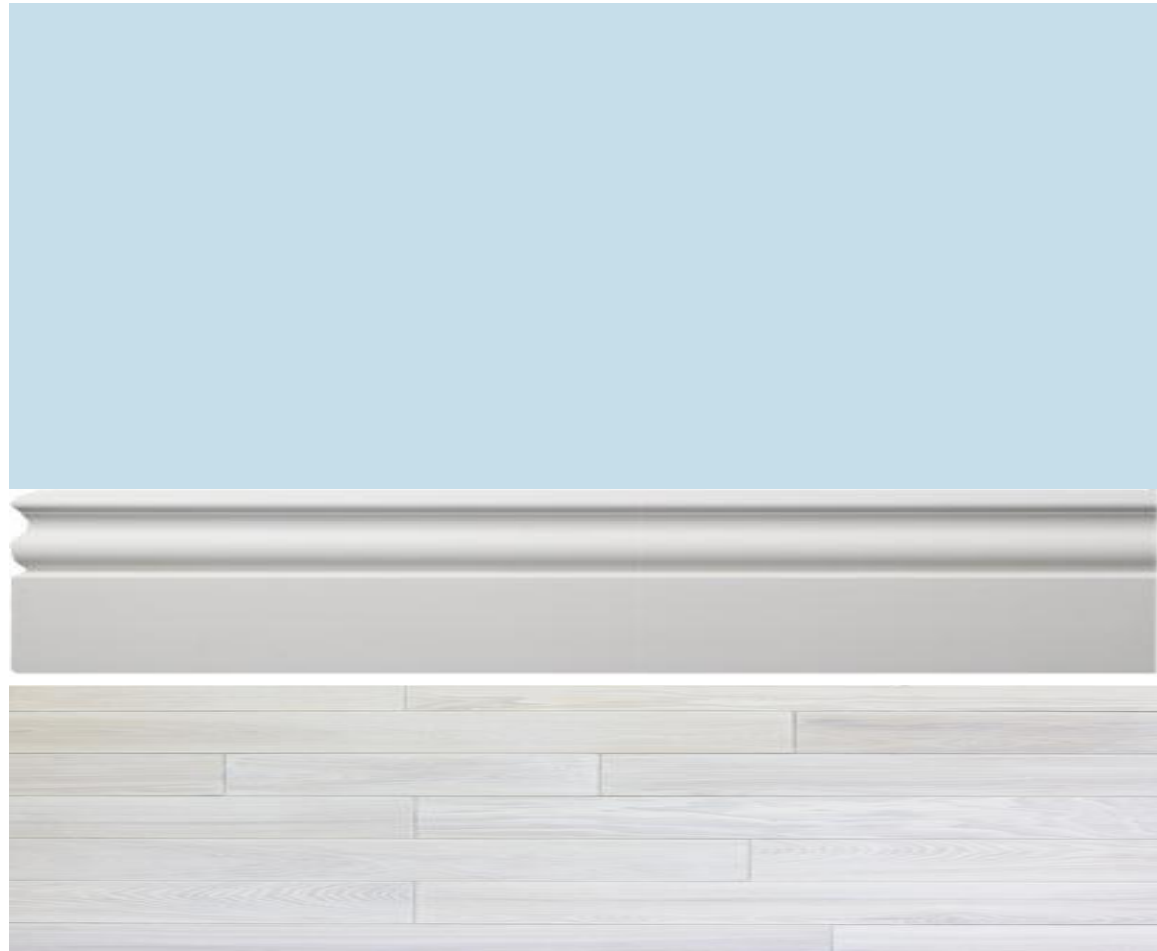
Option One

Sunroom:



Option Two

Sunroom:

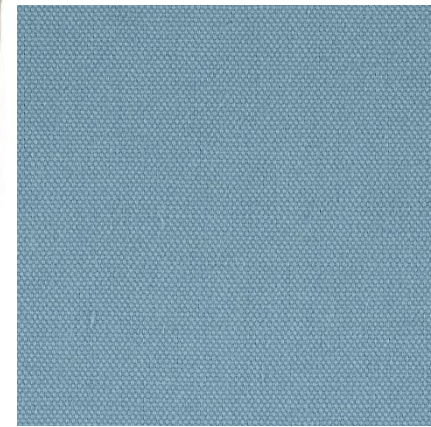
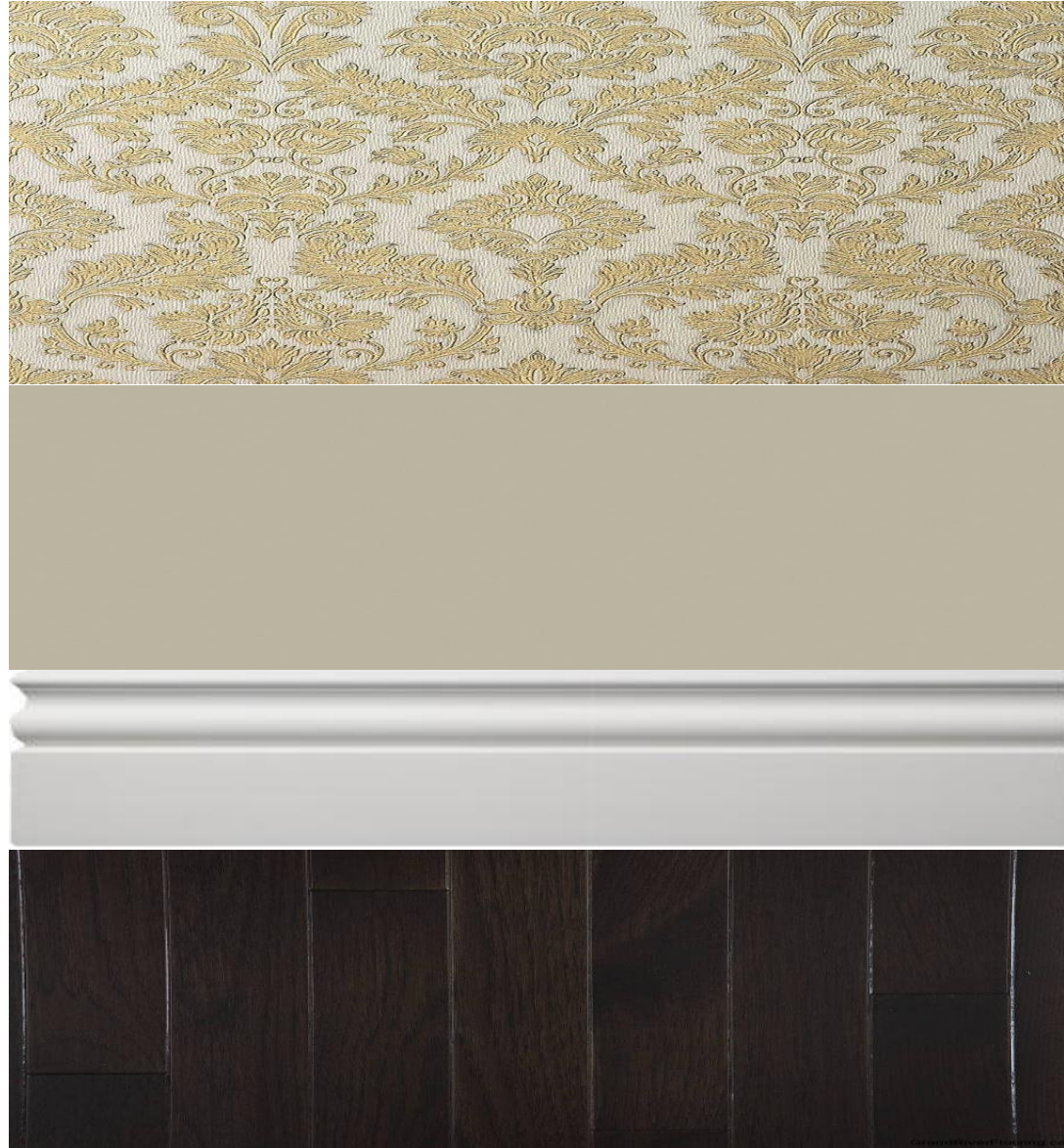




Fran and I visited each other every chance that we got and wrote letters to each other regularly. It is true what they say; distance DOES make the heart grow fonder.

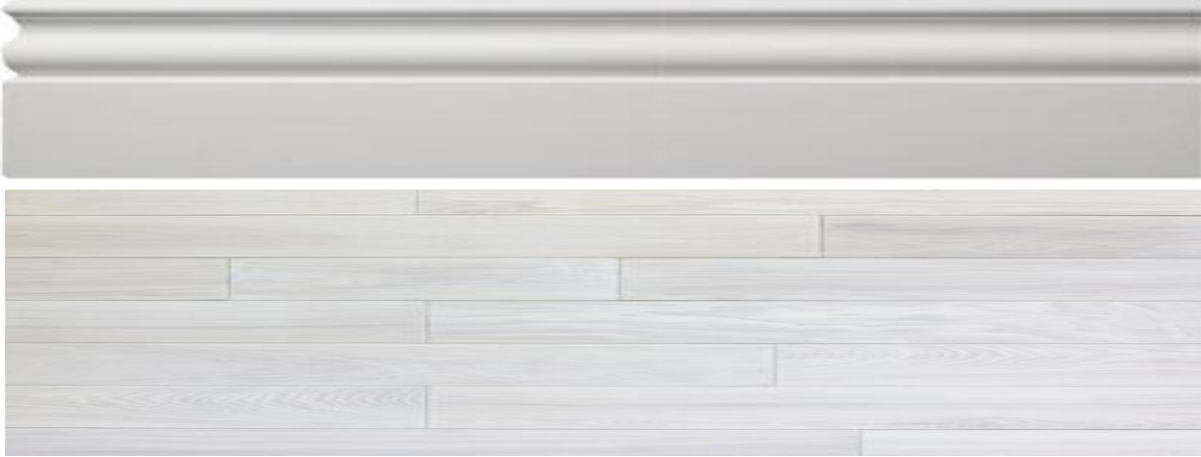
Option One

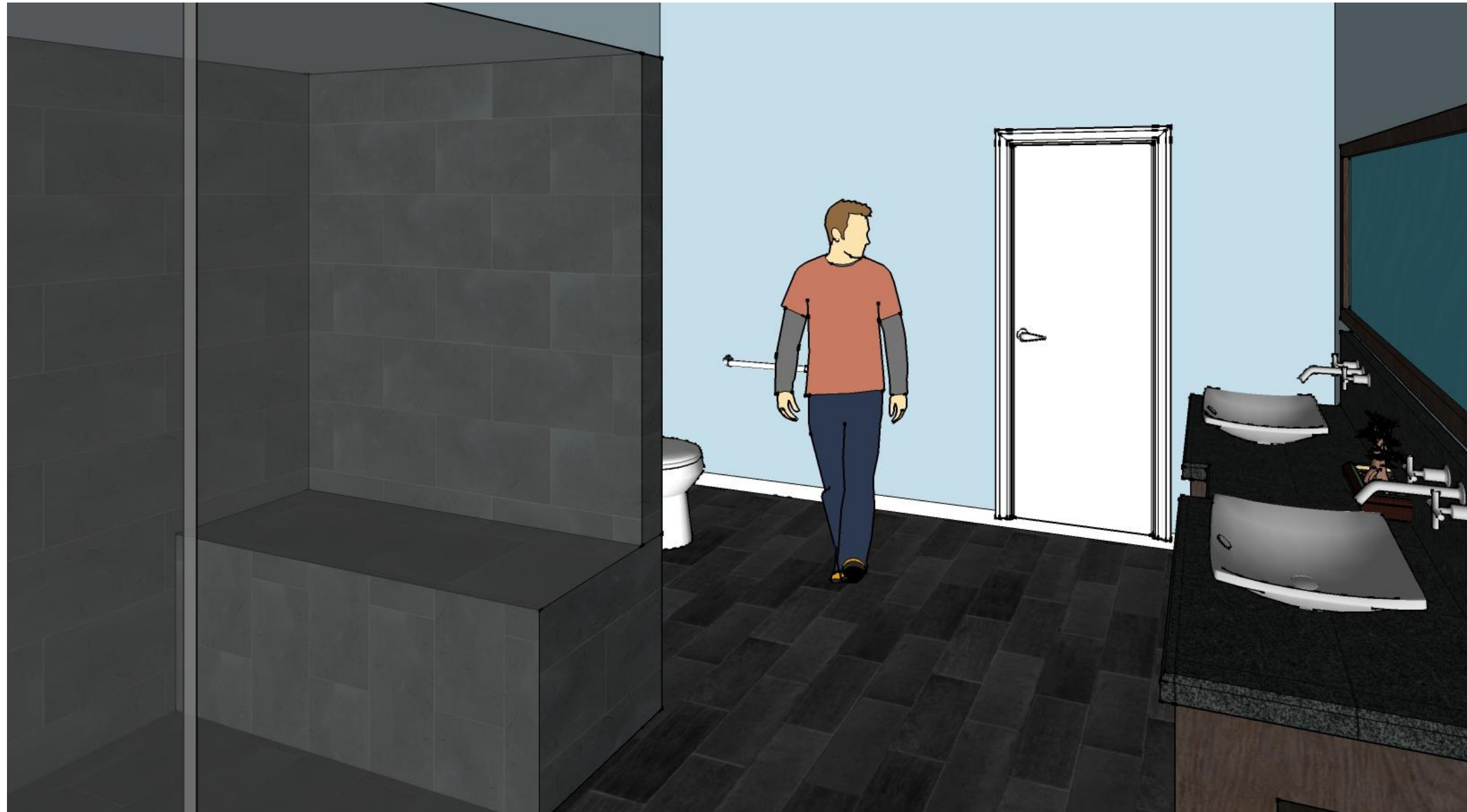
Master Bedroom:



Option Two

Master Bedroom:

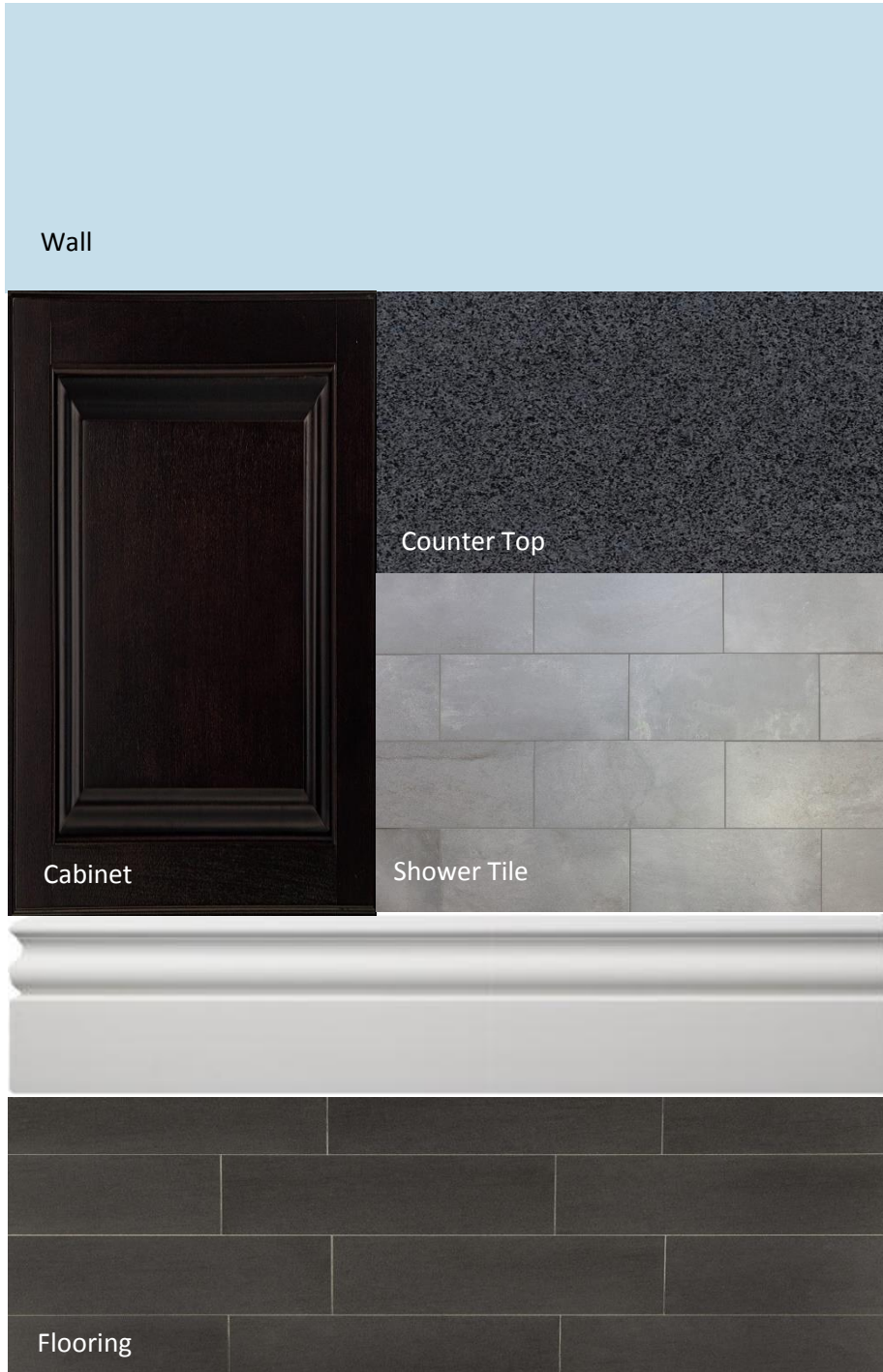




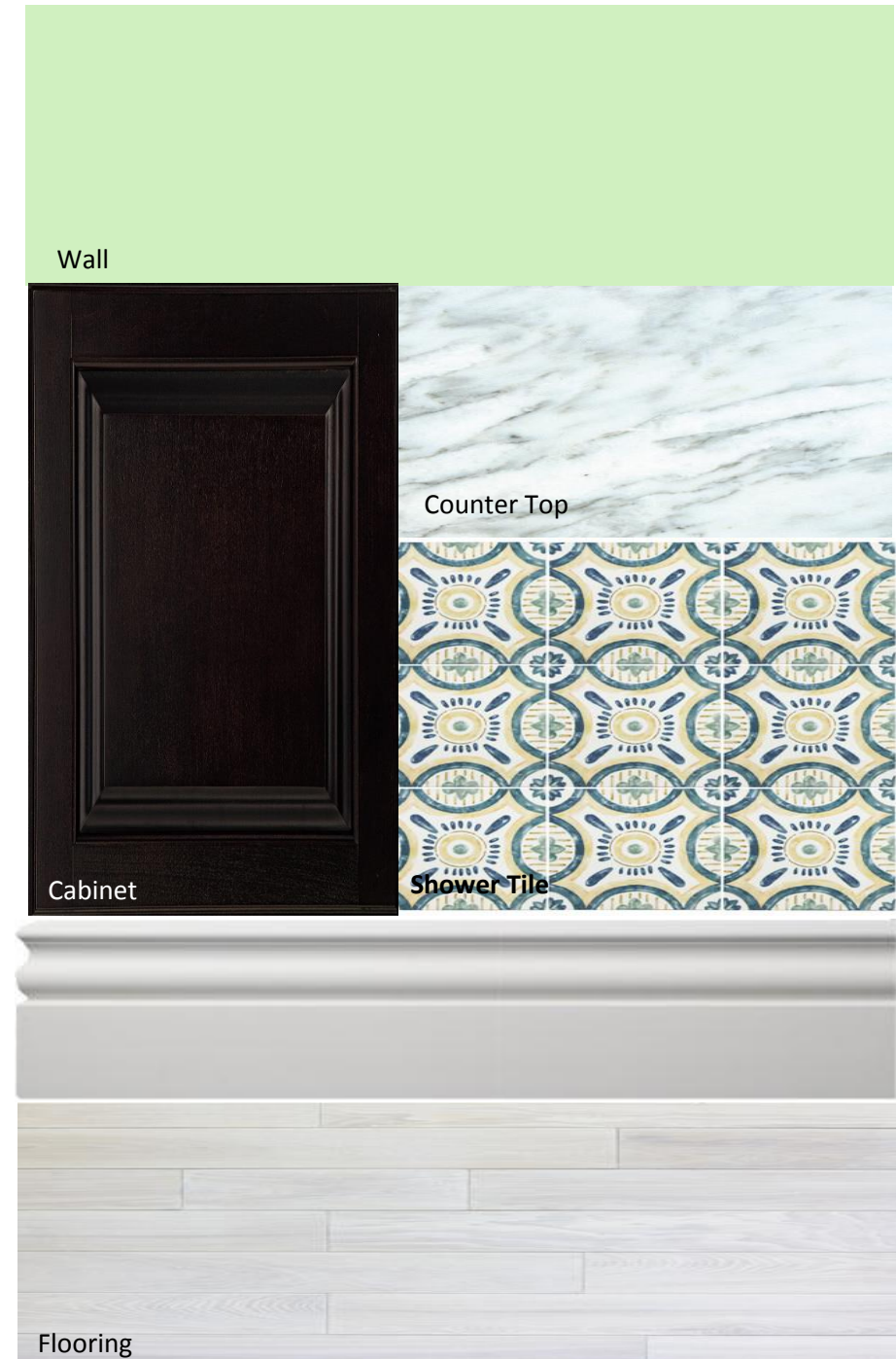
After we both graduated from college, I moved back to Pittsburgh. Fran and I got married soon afterwards. Our relationship felt stronger than ever and it felt like we had passed the ultimate test. There has never been another doubt in my mind that our relationship can't withstand even the toughest of battles!

Option One

Bathrooms:



Option Two





5

- Empire style flourished between 1800–1815 during the Consulate and French Empire periods
- Colors often used:
 - Red
 - Black
 - Gold
- Large scale furniture
- Elaborate detail
- Rigorous symmetry
- Typical fabric and wallpaper patterns include:
 - Figures of victory bearing palm branches
 - Rose wreaths
 - flat acanthus leaves

