

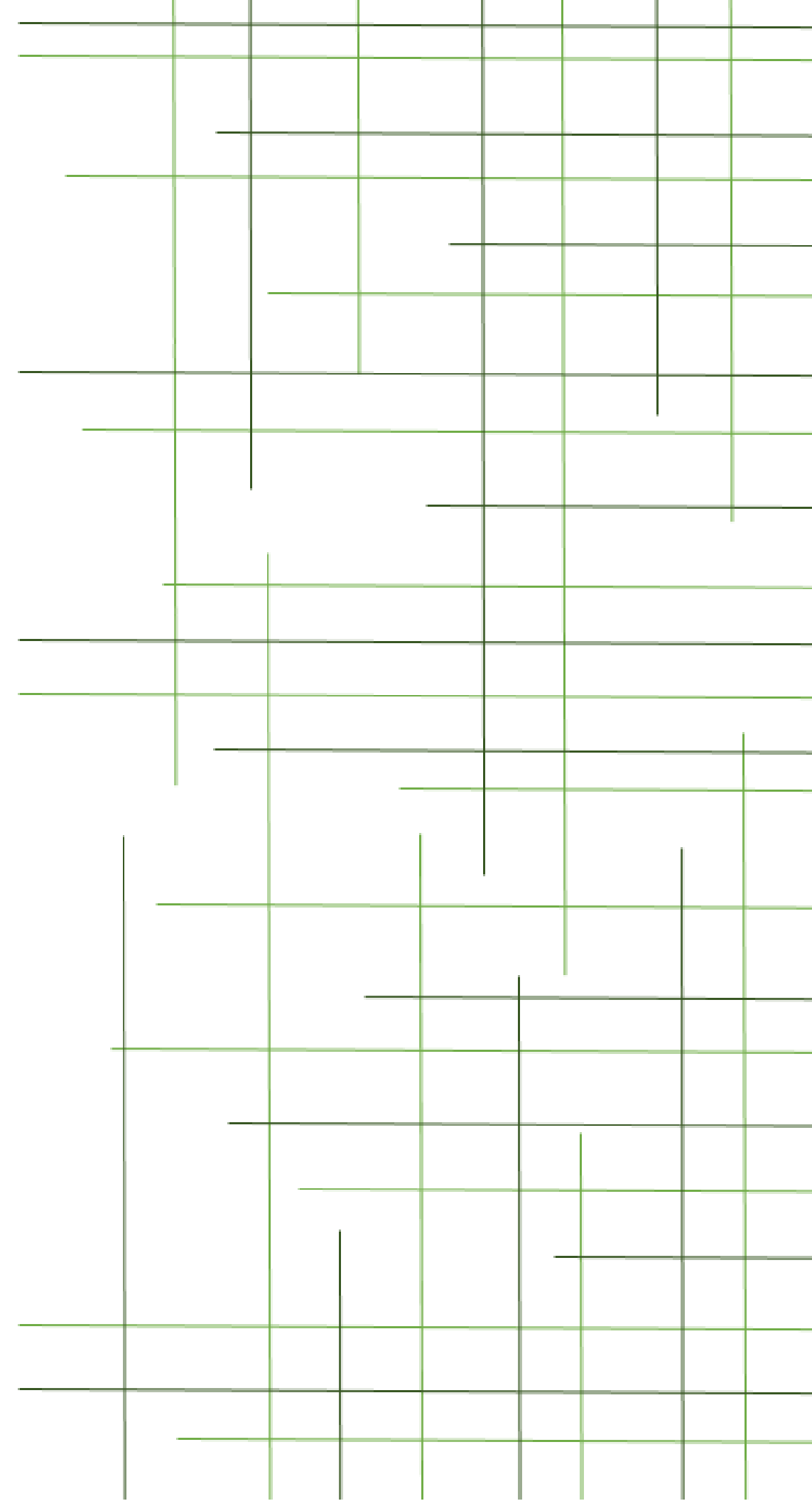
Pat & Fran Retirement Condo

IDSN 3600

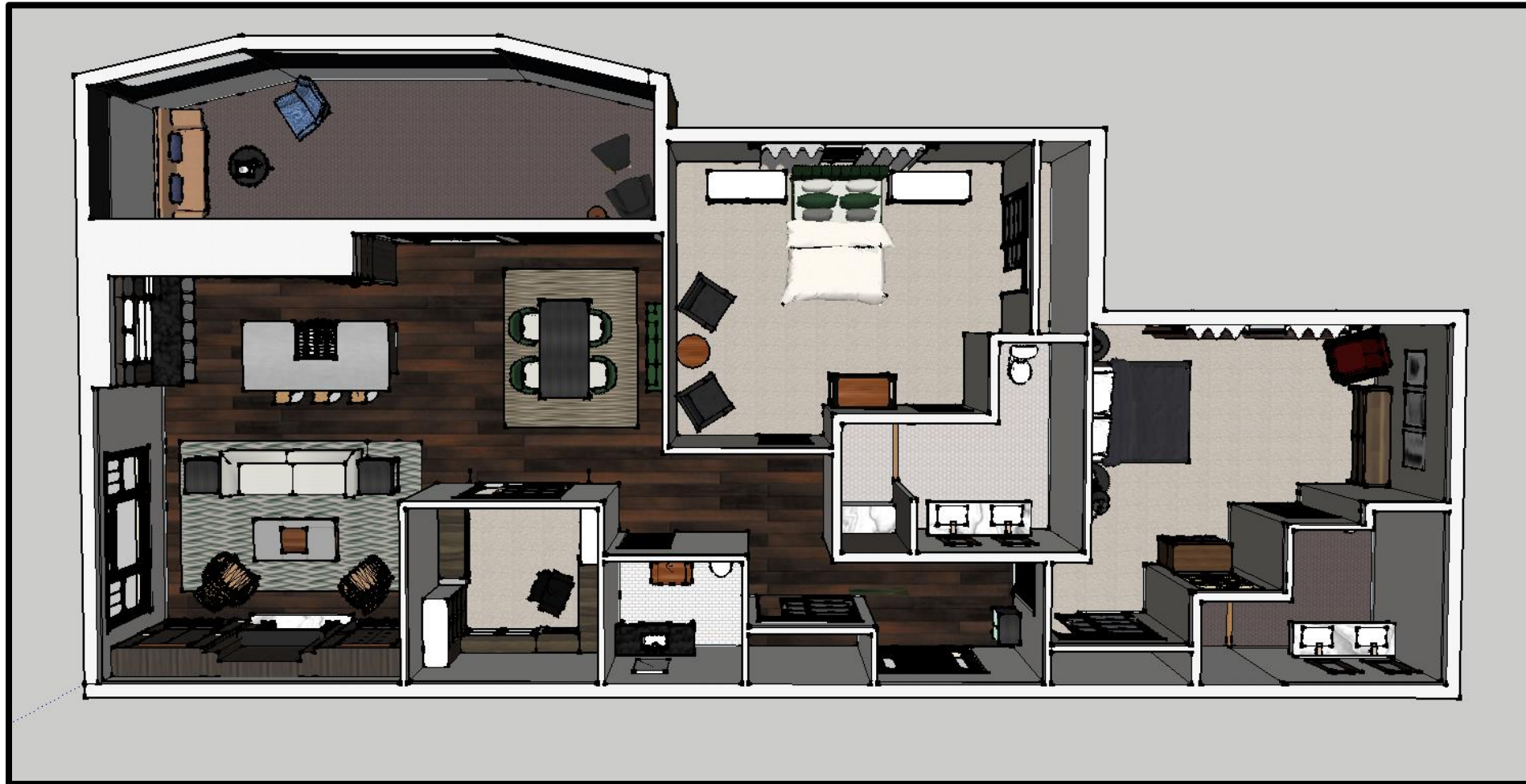
Portfolio 3

Jessica Wood

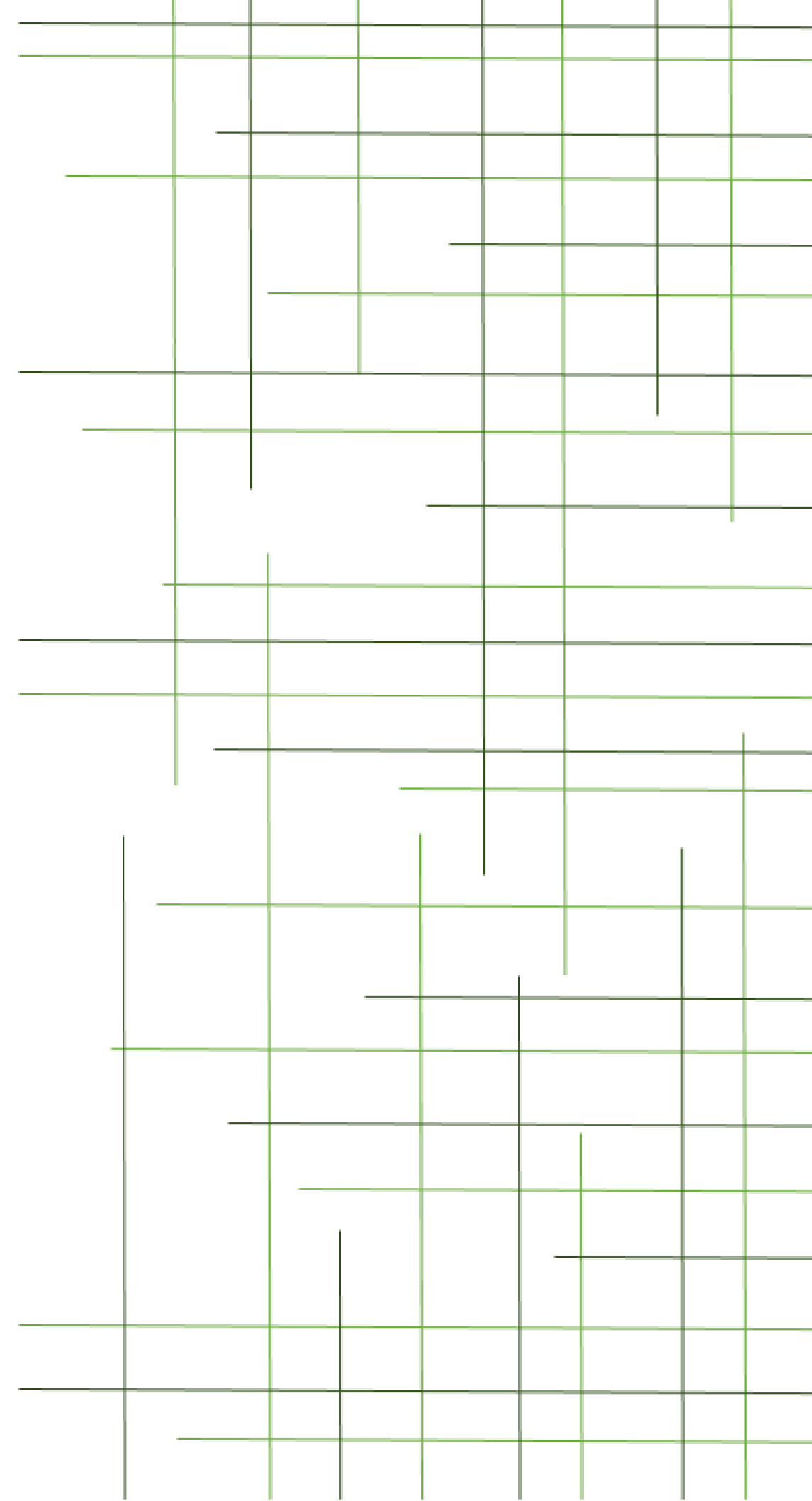
December 2, 2016



Overview



Good evening Pat and Fran, as you know we're meeting tonight so I can walk you guys through your new design for your condo. Let me first remind you both the reasons you told me you wanted to move to Greenville, NC in the first place. First you said it was the weather; the winters are much nicer down here in NC than they are in Pittsburgh. Second you said it was getting harder to keep up with Pittsburgh's rising cost of living with both of you now being in retirement. The last reason you gave was so you'd be closer to your daughter Dana. Since she doesn't have any family down here this seemed, to me, to be your biggest reason for moving. I hope throughout this presentation of your design you both continue to fall in love with your new home just as I have through designing it.



Design Styles

Architecture Style

Prairie Style:

- A subset of Craftsman style
- Defined by:
 - Horizontal lines
 - Large open spaces
 - Prominent fireplaces
 - The use of mixed materials

Historic Style

Constructivism:

- Replaced composition with construction
- Saw art as an object
- Defined by:
 - Sleek minimalistic forms
 - Rigid Structures
 - No embellishment

When we started this project you both expressed to me a love of constructivism, a love of all things modern. I was taken aback by this at first because the architecture of the condo is relatively traditional. When I asked if you both wanted to change any of the architecture features to make the space more modern you told me that you felt the mix of traditional and modern would give the condo a unique style. A style that truly fit with your personality. With that thought in mind I asked you guys to gather some inspiration pictures for me.



Inspiration



Do you guys remember these? These are the inspiration pictures you both gathered for me during our third meeting together. I have to say Fran I'm partial to the picture on the top left myself. I think it shows a nice blend of the old and new you both want. You guys have been so helpful with the process so far and very open minded to my designs. I wish I could say our whole design process was as easy as it was in the beginning, but you can't design a home from scratch without having a few setbacks along the way.



The Compromise



The longer you guys were around the traditional architecture the more you both started to worry that it would look ugly and tacky with the modern furniture and finishes we were planning to use. I know trying to fit the big picture into your head is hard and that it is slightly scary to not know how everything will turn out in the end, but as I've been telling you guys throughout this process, design has a funny way of completing itself. And if my words of encouragement aren't enough just take a look at these pictures where the two styles are blended perfectly together.



Adding a Modern Edge

-**Windows/Doors:** All windows and doors have been refinished and painted a matte black. The sliding doors now have a frosted glass in the door panels.

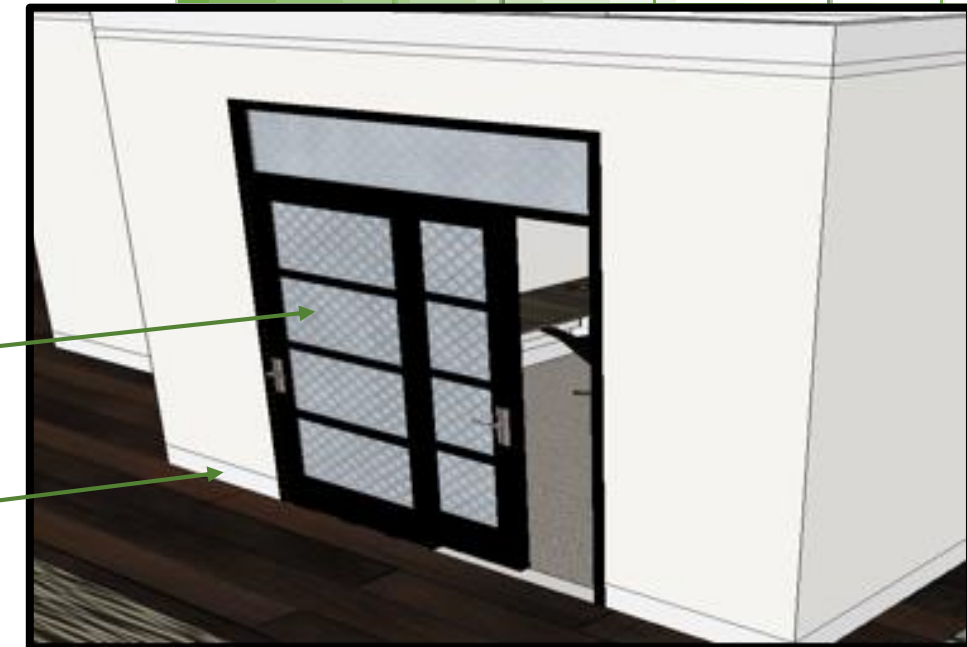
-**Trim:** The trim design we used is a simple one with no added ornament.

-**Fireplace:** The fireplace is painted in the same matte black as the windows and doors and the surrounding built-ins are covered in a vertical laying veneer.

-**Wood Floor:** We decided to go with thicker boards for a modern feel as well as laying them out horizontally throughout the space.

-**Kitchen Counters:** The kitchen island has an aluminum counter top which contrasts nicely with the matte black marble on the rest of the counters. The top row of cabinets also have glass doors to add a modern edge.

Even though I could see your doubts and worries start to fade as everything started to come together, I still wanted to give you one last piece of information to soothe your design woes. This is the list of all of the traditional elements you both were worried would clash with the modern design and the updates they received. To ease your worried minds even more I added pictures of what the updates will look like, because trust me I get it, a picture is worth a thousand words.



Furniture Selections

Master Bedroom

The next step in our process was to look at our furniture options. We started with the master bedroom because your bedroom is your escape. If it's not done then the design work on the rest of the condo will become even more exhausting. I wanted your bedroom to feel luxurious. Because of that I decided to up the glamour a little bit with this design. I played into your background in decorative arts, Pat, and used some furniture and finishes that were a little more art deco inspired.



Furniture Selections

Kitchen/Dining Room

The next room we picked out furniture for was the kitchen and dining room. Our goal here was to find the most comfortable seating possible since you love having visitors over. After trying out a lot of different options I can confidently say that we have achieved our goal. Also in the dining room you guys had a beautiful family heirloom, a lovely storage chest. This chest could not have fit into the design more perfectly. I have to say it is a true constructivist piece. Its design makes the chest appear that it is a piece of art itself.



Furniture Selections

Sun Room

Next on our list was the sun room. The room that holds your second heirloom. Pat, you expressed to me the need for multiple casual lounging areas in your condo for when family came to visit. I provided two seating areas out here for you. These areas will be nice when you have company and want to visit, but will also serve as a nice place to sit and enjoy a cup of coffee each morning.

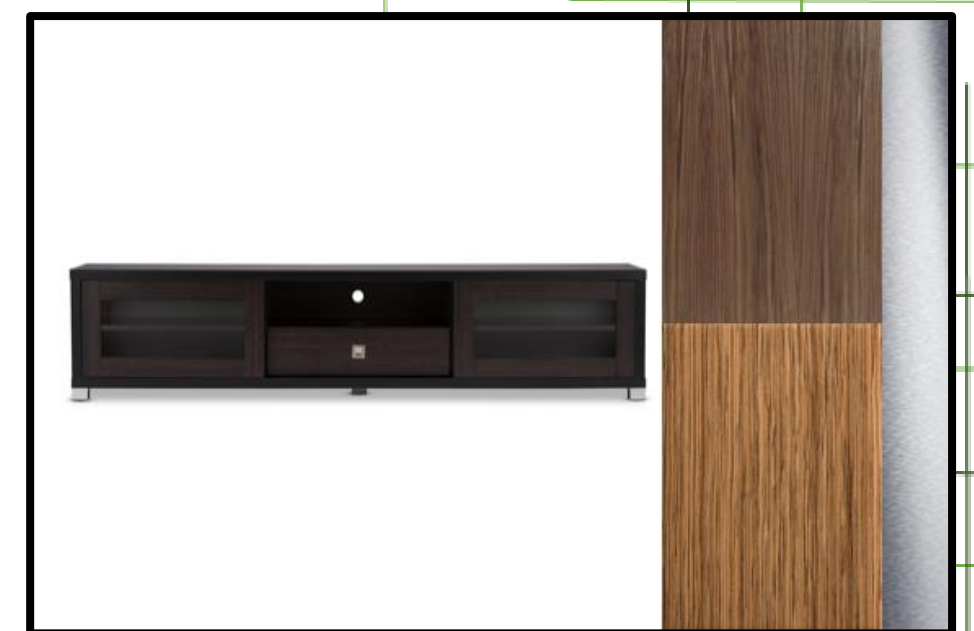


Furniture Selections

Office

Since Pat got her seating areas in the sun room, Fran it was time to do something for you. I know you have a lot of schooling materials from your teaching days that will need a place to stay. I provided two built-ins so there is plenty of storage for whatever you need.

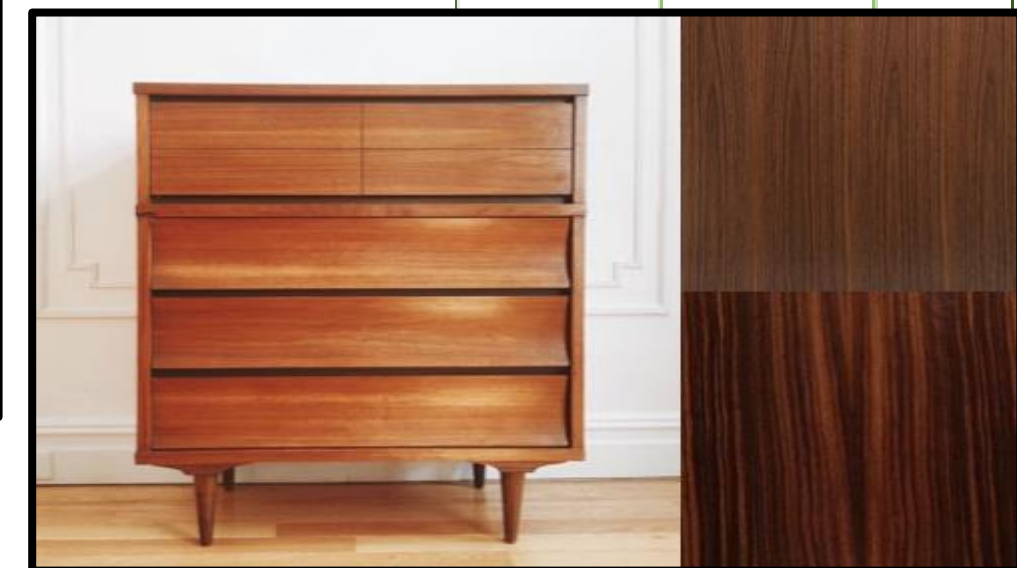
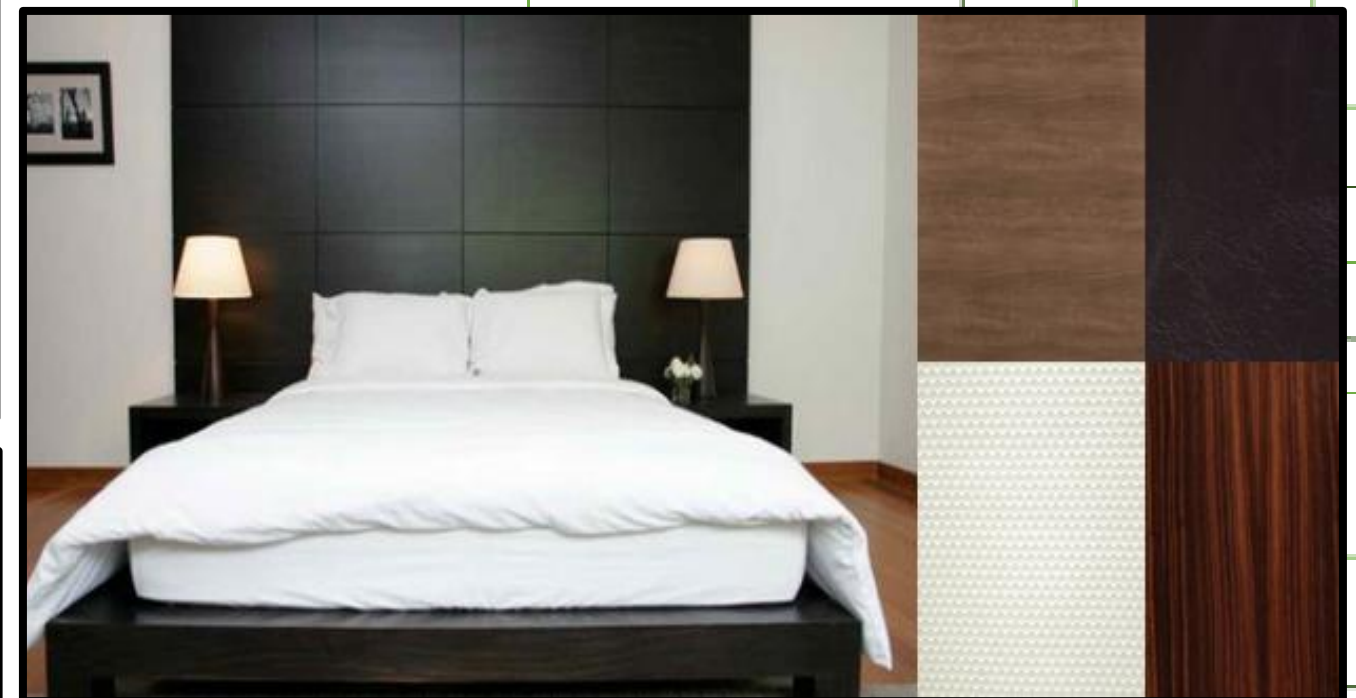
We chose a corner desk to provide a large work space and there is even a built-in bench incase Pat decides to sit with you while you do some work.



Furniture Selections

Guest Bedroom

I know you both said you would have frequent visitors especially your daughter Dana. I wanted to provide her and your guests with a nice, relaxing, and neutral room. A room any of your visitors will love to spend time in.

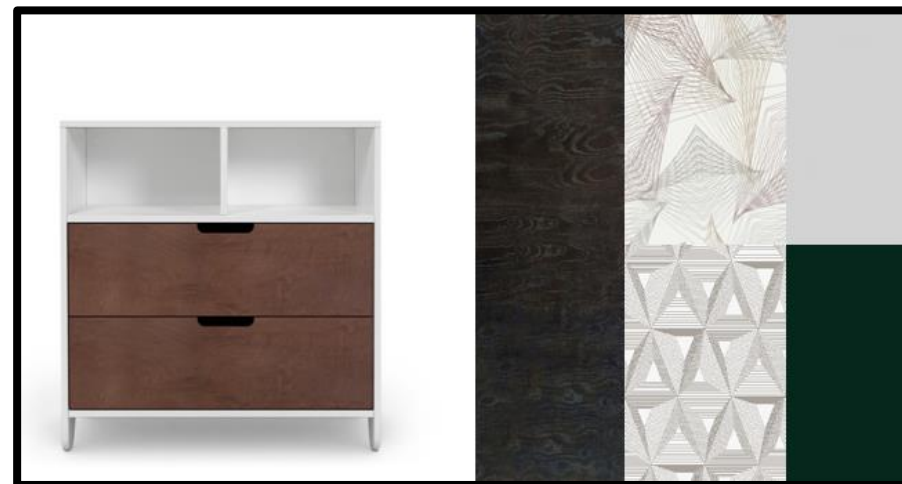
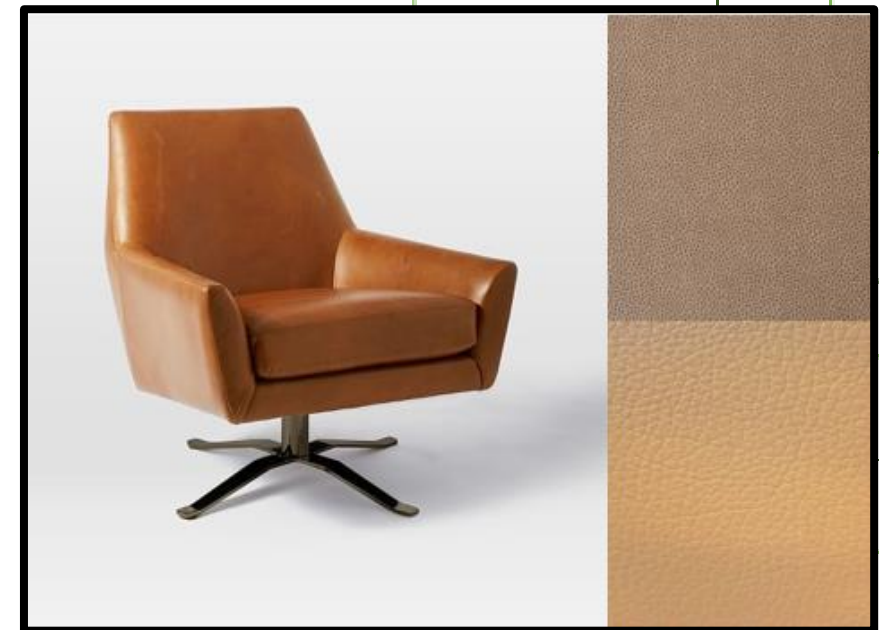
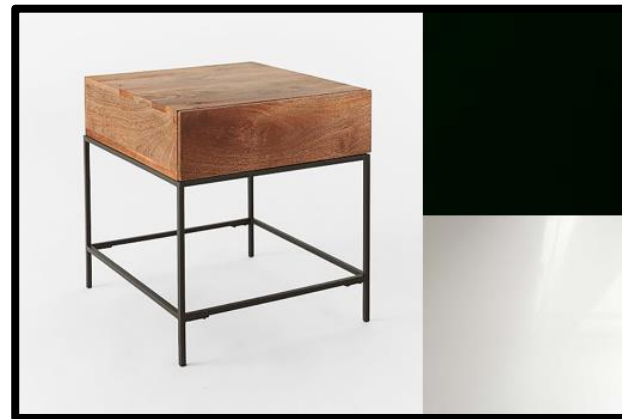


Furniture Selections

Living Room

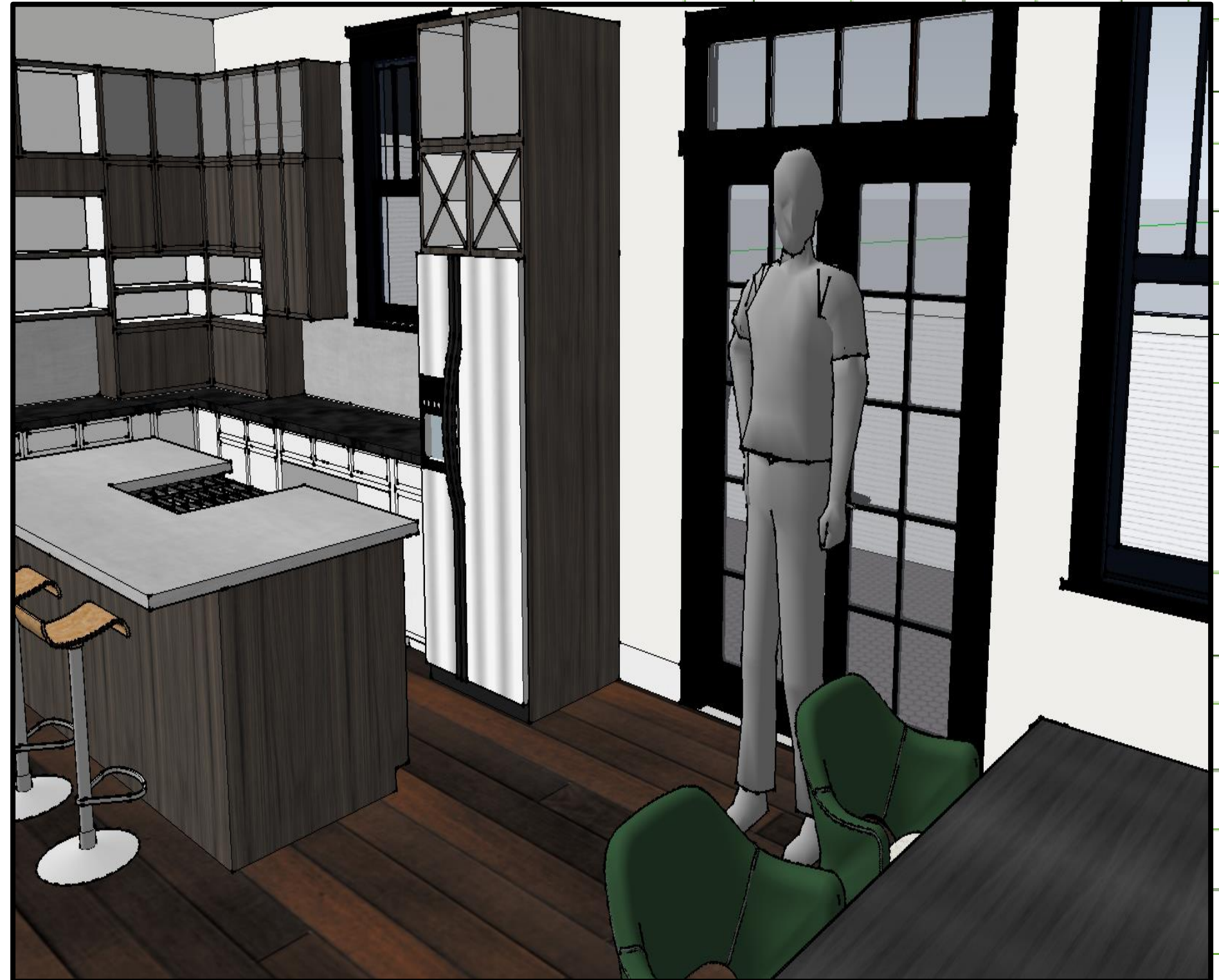
Last on our list was the living room. From the day you guys bought this condo you have expressed to me how much you loved the fireplace wall. The main focus of this room is that wall with a matte black mantle and surrounding wood veneer built-ins. To make sure the fireplace wall was the star of show I kept the scale and fabrics of the furniture light and neutral.

The other piece of furniture on this page is the console table next to your front door. The console table is in the bottom left corner of this page.



Final Design

As our design process comes to an end, I am so ecstatic to share with you the plans for your home. From updating the traditional features to picking out new furniture and finishes, it has been a long, sometimes stressful, but overall fun ride. The next few pages are filled with pictures of what your soon to be home will look like. I've had a lot of fun with this condo and it has been a pleasure working with you both. Now enjoy the designs you helped create.



Entrance



Living Room



Kitchen



Kitchen



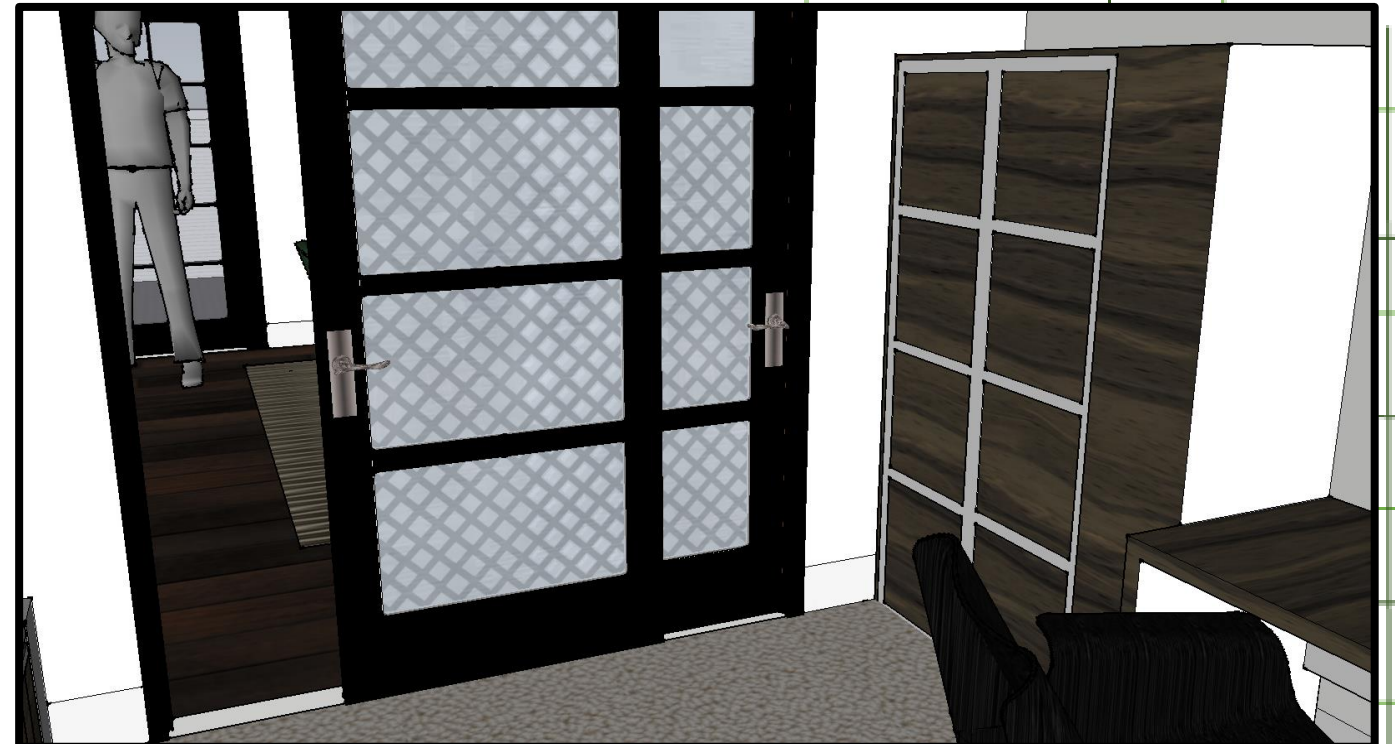
Dining Room



Dining Room



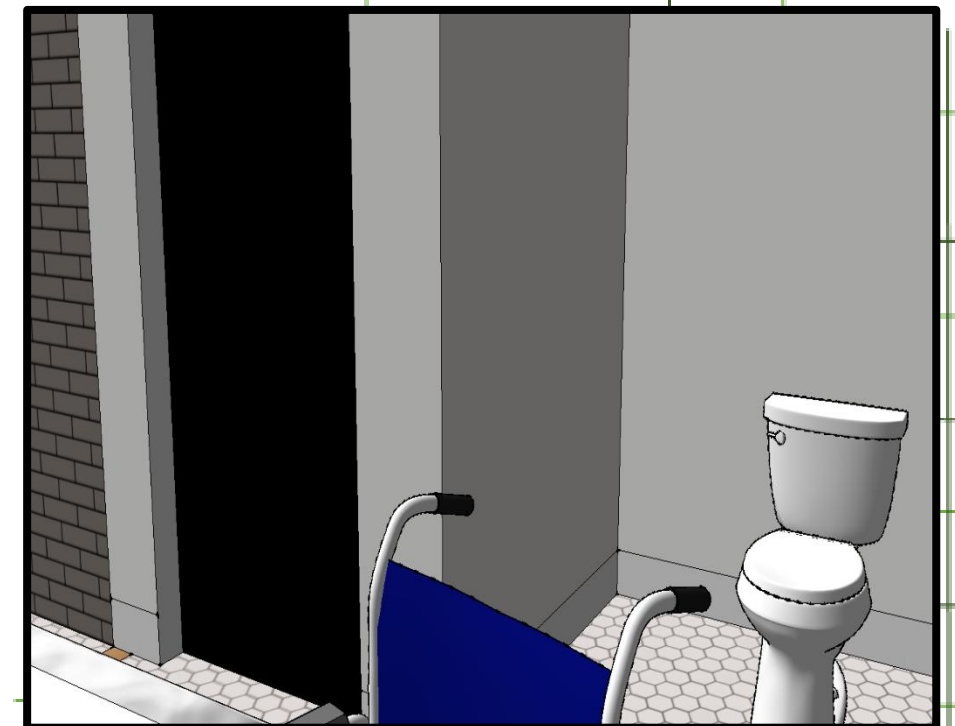
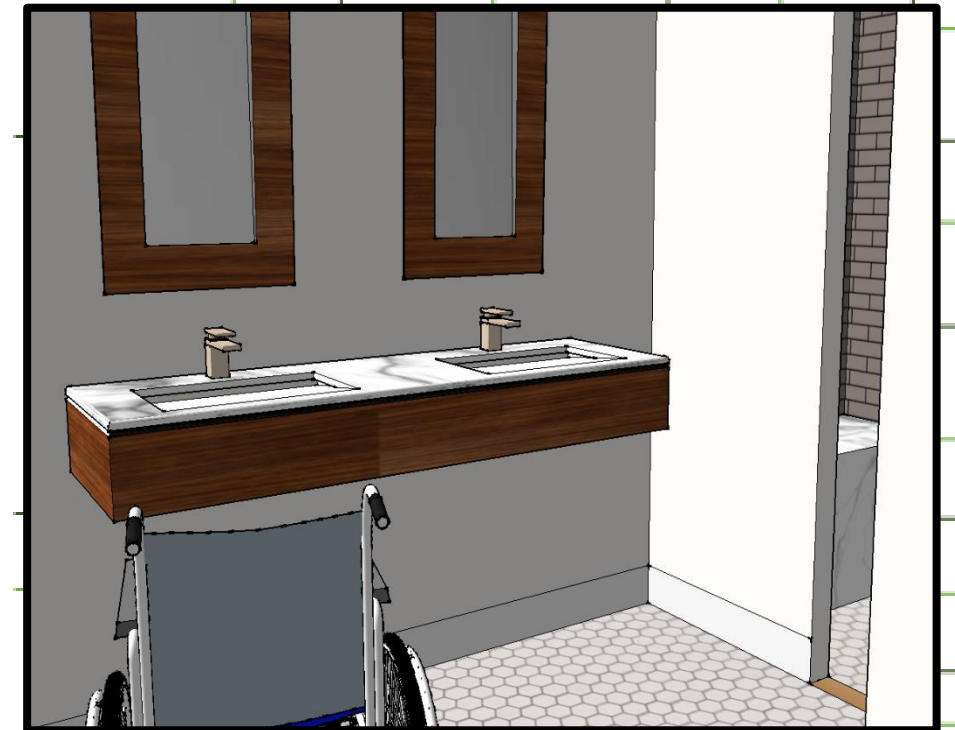
Office



Master Suite



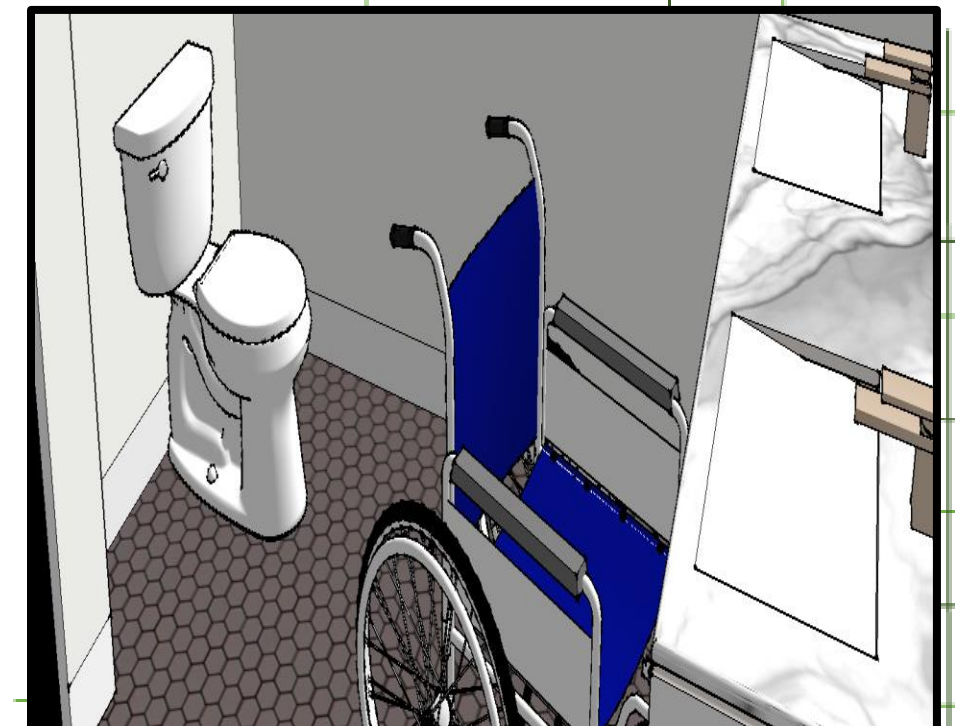
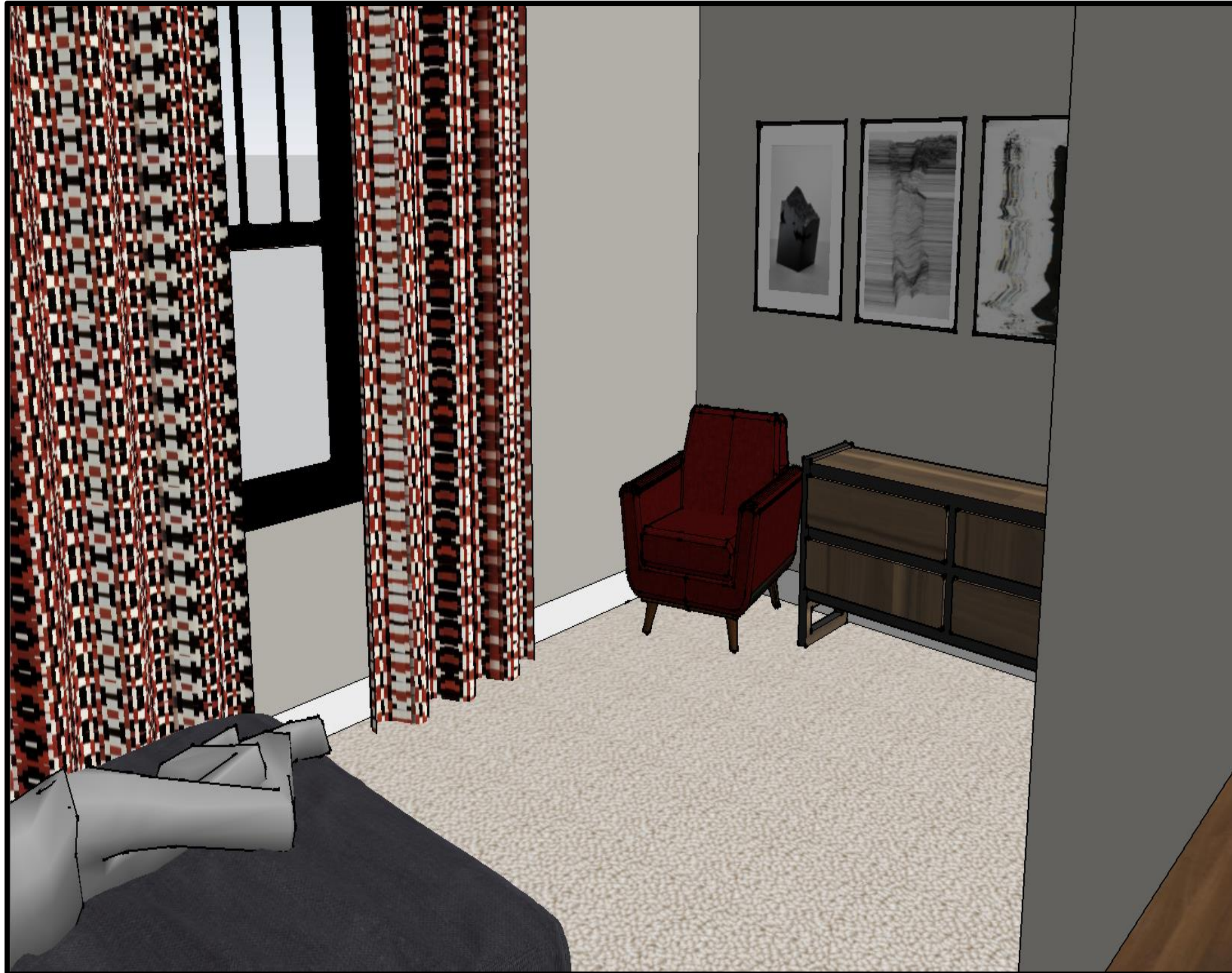
Master Suite



Guest Suite



Guest Suite



SunRoom



SunRoom

