

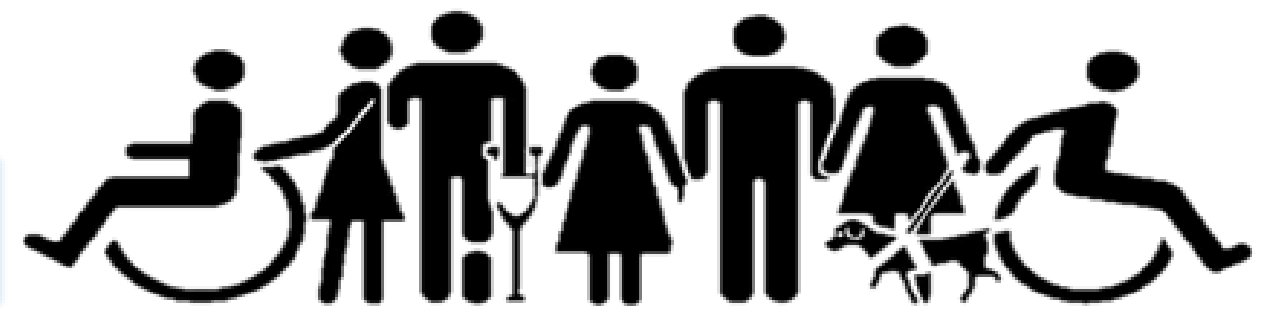
# FINE **LIKE** WINE

---

## **IDSN 3102 – PORTFOLIO 1**

C. McKenzie Love

# THE BENEFITS OF UNIVERSAL DESIGN



## WHAT IS UNIVERSAL DESIGN?

Universal design is the process of creating products that are accessible to people with a wide range of abilities, disabilities, and other characteristics.

## SENIOR LIVING : PERCEPTION ON UNIVERSAL DESIGN

Seniors want to feel like they are moving to a retirement community rather than an assisted living facility or institution, a place that still feels like home.

## ACCOMODATIONS FOR UNIVERSAL DESIGN

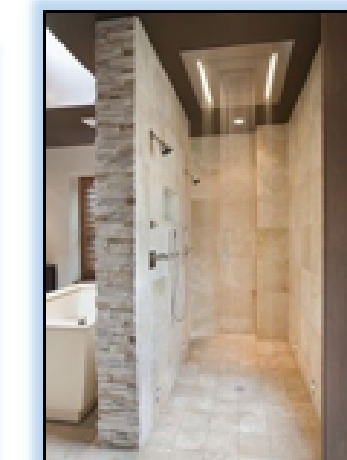
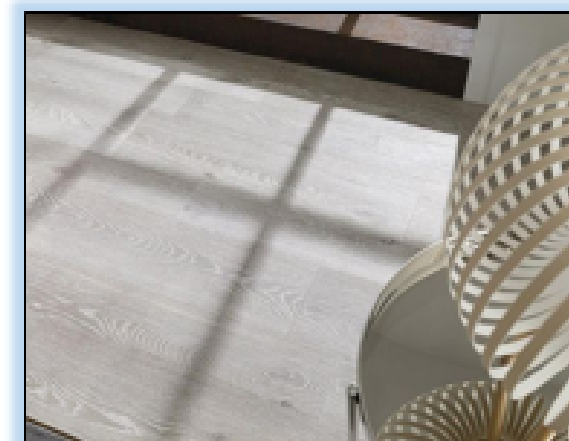
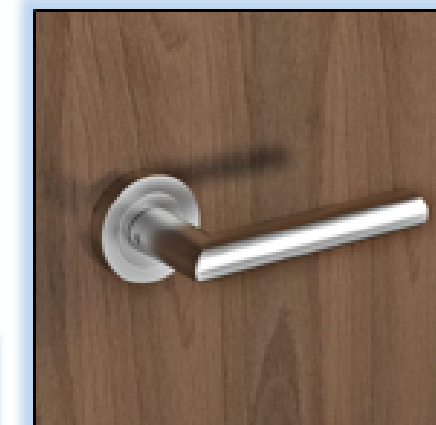
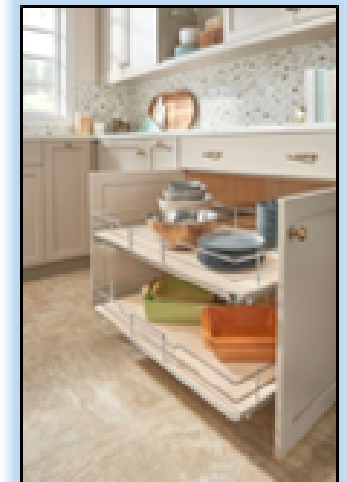
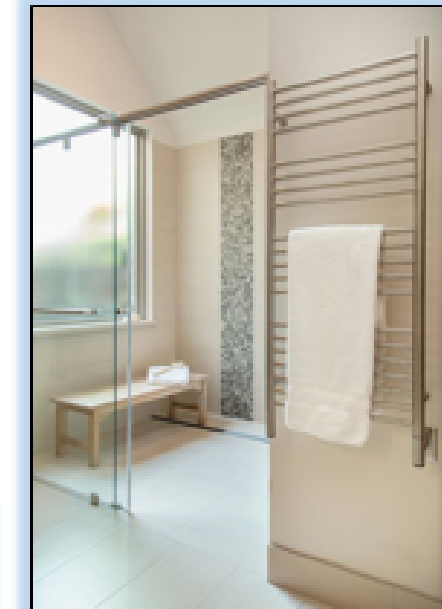
- Fully Walk-In / No Step Shower
- Sleek Handrails / Grab Bars
- Lower Appliances
- Wall Mounted Sinks
- Lower Cabinets
- Radiant Flooring
- Drawers for Dishes and Cookware
- Side Mounted Sink Faucet

## PROS OF UNIVERSAL DESIGN

- Design that accommodates everyone at every stage in life disabled and non-disabled
- Provides the proper ADA equipment needed without feeling too constricted
- Promotes active lifestyles for longer periods of time
- Creates a "home" like atmosphere

## CONS OF UNIVERSAL DESIGN

- Potential for seniors to feel more institutionalized
- Not as appealing to the eye
- Make disabled persons feel singled out
- Make all seniors feel older than they might be



# CLIENT / USER PROFILE

## WHO?

- The client is the developer building the condominiums.
- The users are the over 55 age seniors looking to downsize.

## CLIENT AND USER WANTS :

- Square footage will range from 600SF – 1200SF depending what size unit the seniors want.
- 2 Bedrooms, 2 Bathrooms, bonus room and screened in porch/balcony
- 1 master suite & 1 guest bed and bath per unit
- Open floor plan preferred
- Universal Design to promote aging in place

## WHAT?

- Clients are looking for the most appealing look for the least cost.
- Users are looking for a place that feels like home, with ADA features for a fair price.

## SPECIAL FEATURES :

- Fireplace
- Wood flooring
- Walk-in shower
- Traditional style furnishings with modern touches
- Large walkways
- Towel warmer
- Stainless steel appliances
- Lower counter height
- Granite counter tops

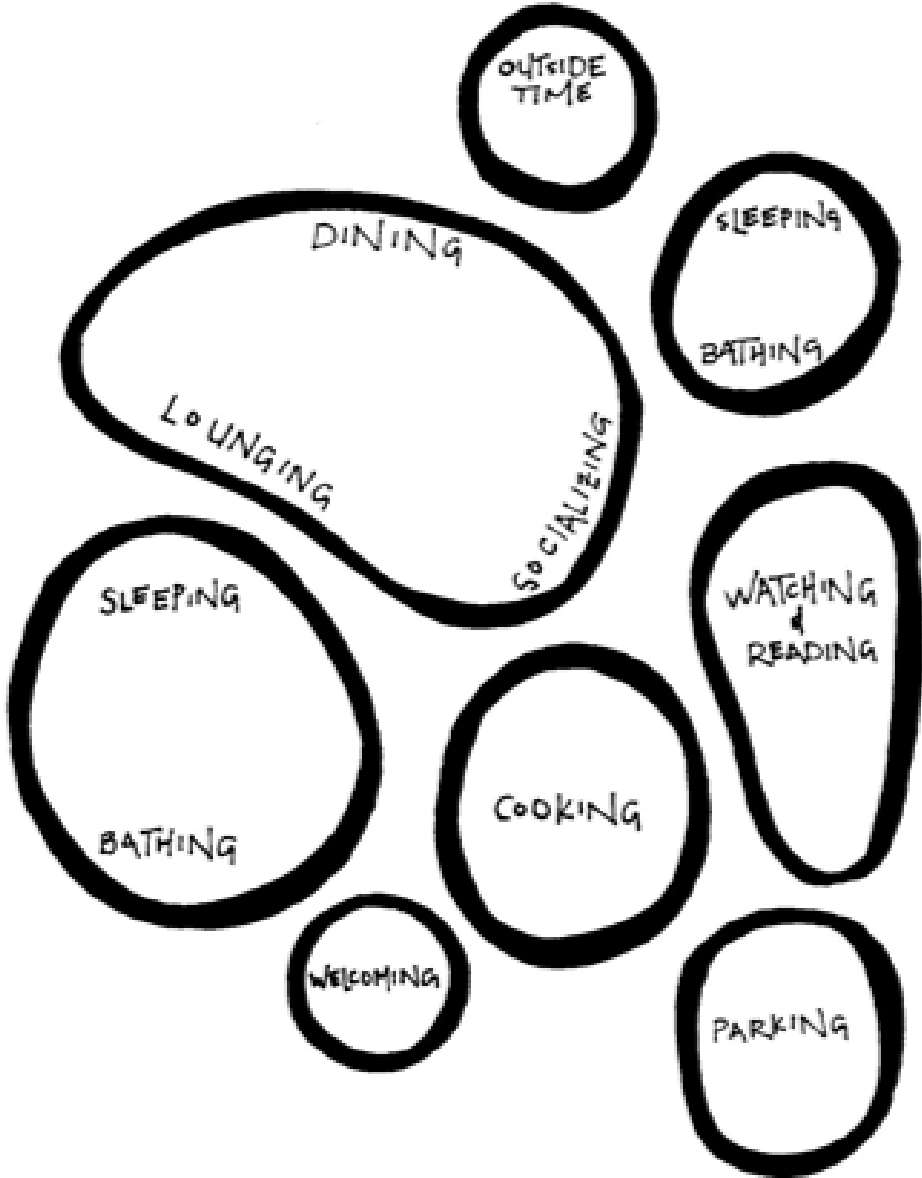
# FINE LIKE WINE

## BUBBLE DIAGRAMS

**BUBBLE**  
(FUNCTIONS)

**OPTION #1**

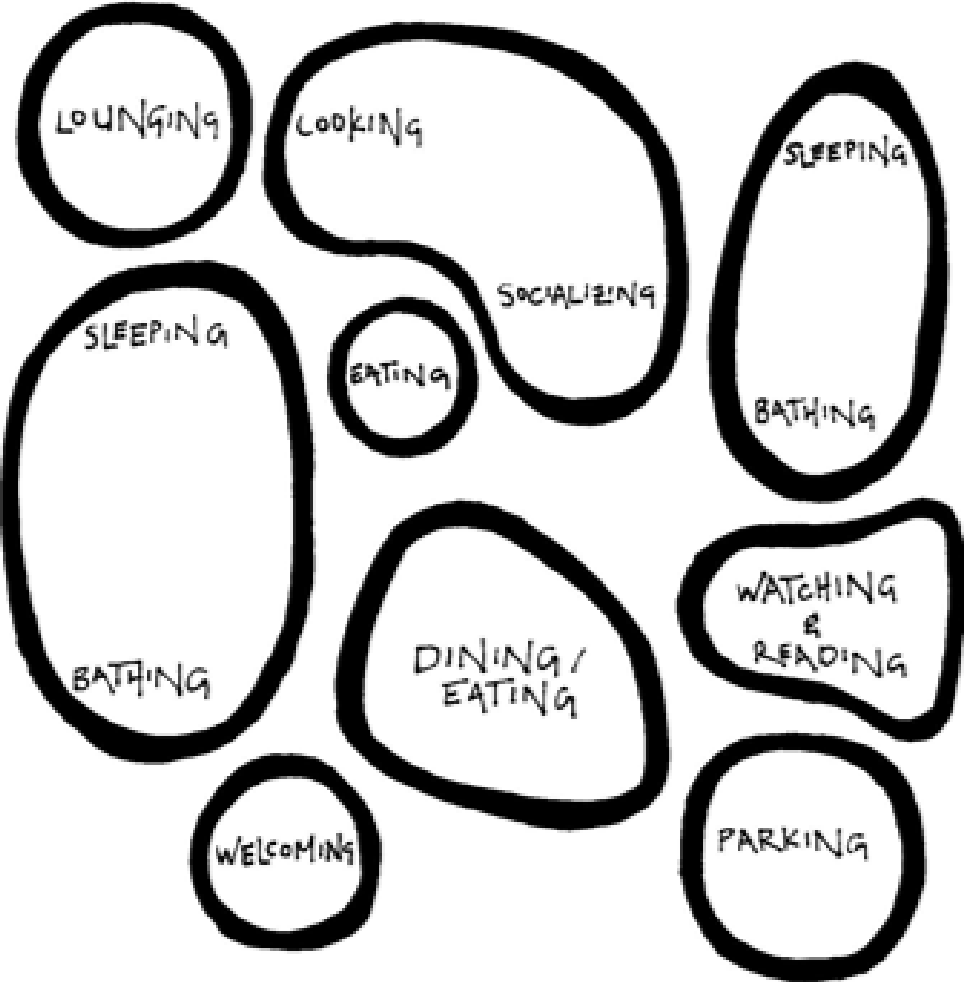
C. MCKENZIE LOVE



**BUBBLE**  
(FUNCTIONS)

**OPTION #2**

C. MCKENZIE LOVE



# FINE **LIKE** WINE

---

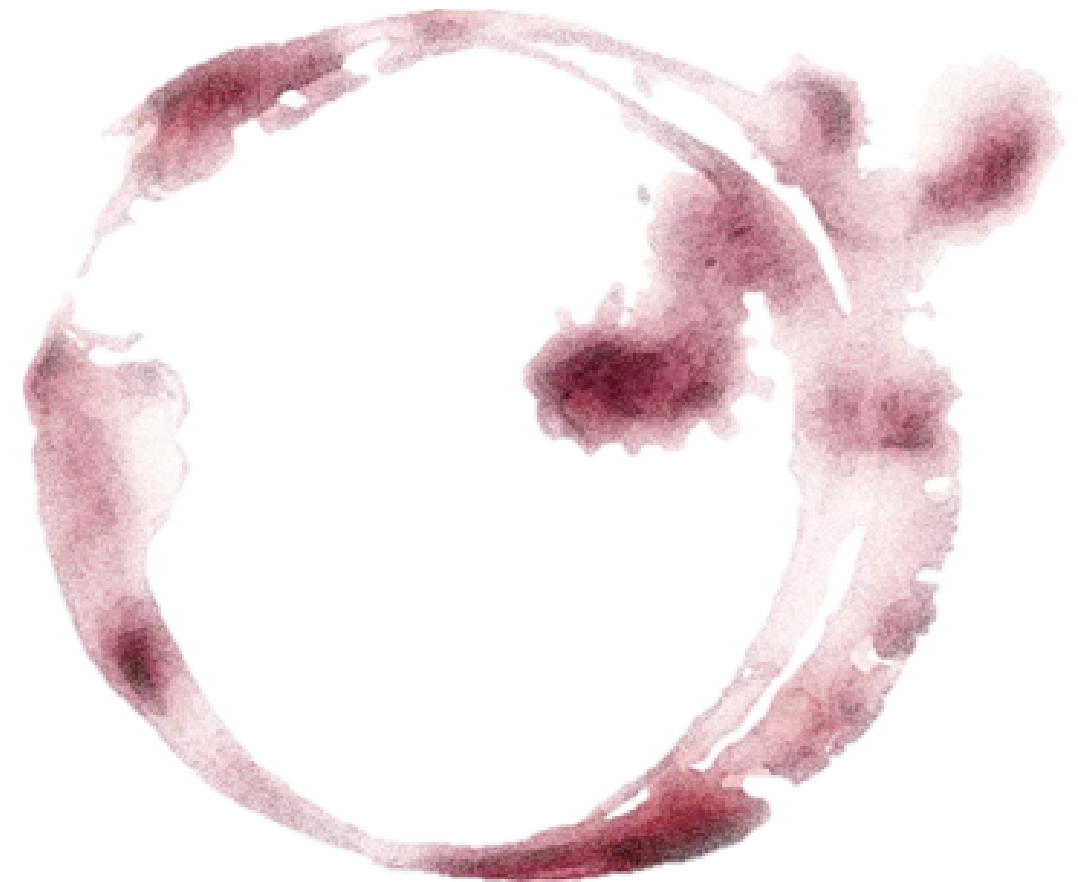
## **SPACE STANDARDS**

- Front (Entry Porch)
- Foyer / 6' x 20' / 120 ft<sup>2</sup>
- Coat Closet
- Master Bedroom / 13'5" x 14'6" / 210 ft<sup>2</sup>
- Master Closet (Walk In) / 5'10" x 5'8" / 36 ft<sup>2</sup>
- Master Bathroom / 13'5" x 8'6" / 126 ft<sup>2</sup>
- Wash Room (Utility) / 4' x 7' / 28 ft<sup>2</sup>
- Sunroom / 13'6" x 16' / 224 ft<sup>2</sup>
- Kitchen (with Pantry) / 12'8" x 13' / 169 ft<sup>2</sup>
- Great Room / 24' x 19'10" / 480 ft<sup>2</sup>
- Guest Bed / 13' x 12'2" / 156 ft<sup>2</sup>
- Guest Closet / 4'1" x 7'8" / 32 ft<sup>2</sup>
- Guest Bathroom / 5' x 8' / 40 ft<sup>2</sup>
- Hallway (with Storage)
- Study (with Bar) / 12'8" x 15' / 195 ft<sup>2</sup>

Estimated Total Square Footage : 1,816 / 1,900

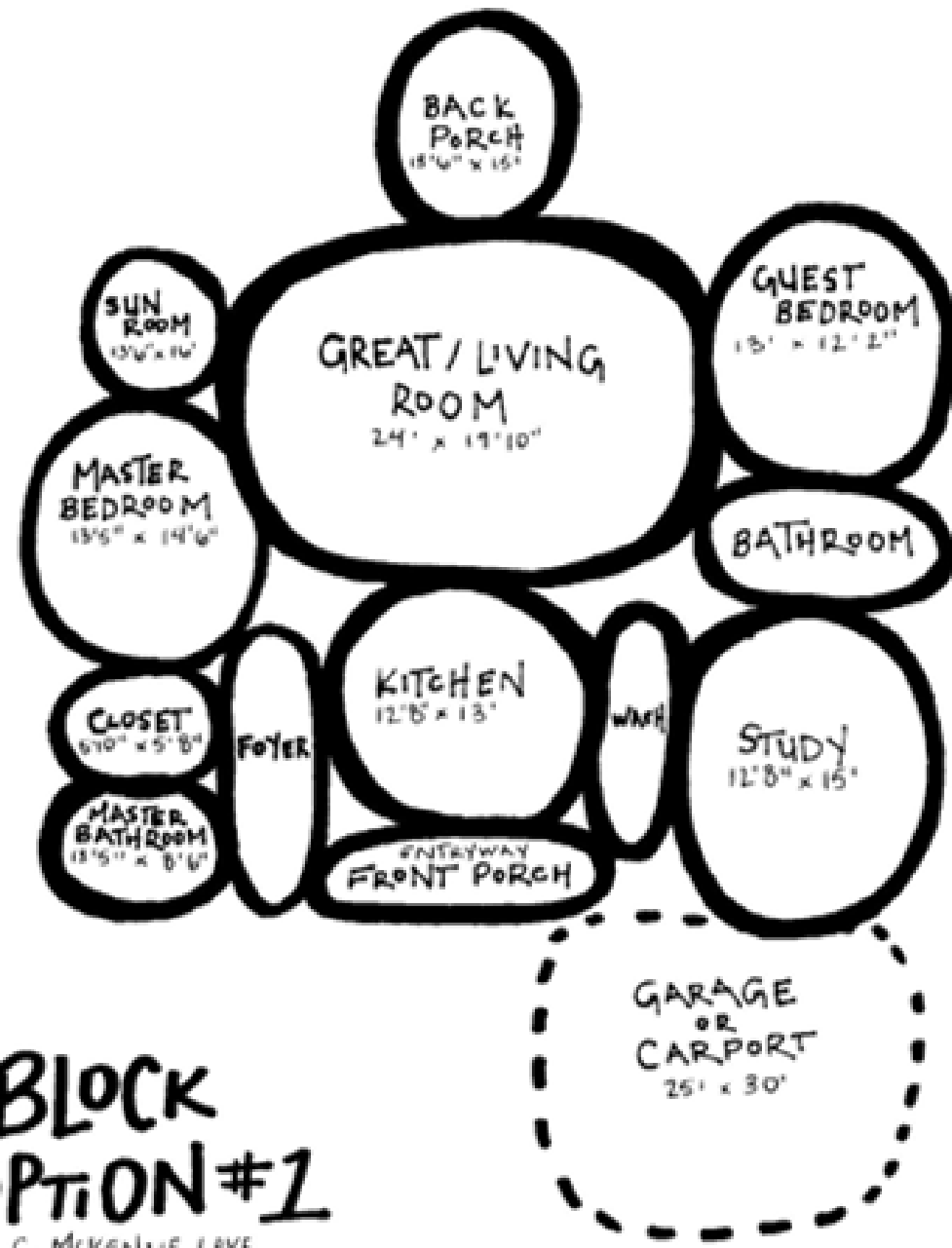
## Optional :

- Garage or Carport / 25' x 30' / 750 ft<sup>2</sup>
- Small (Covered) Patio / 13'6" x 15" / 210

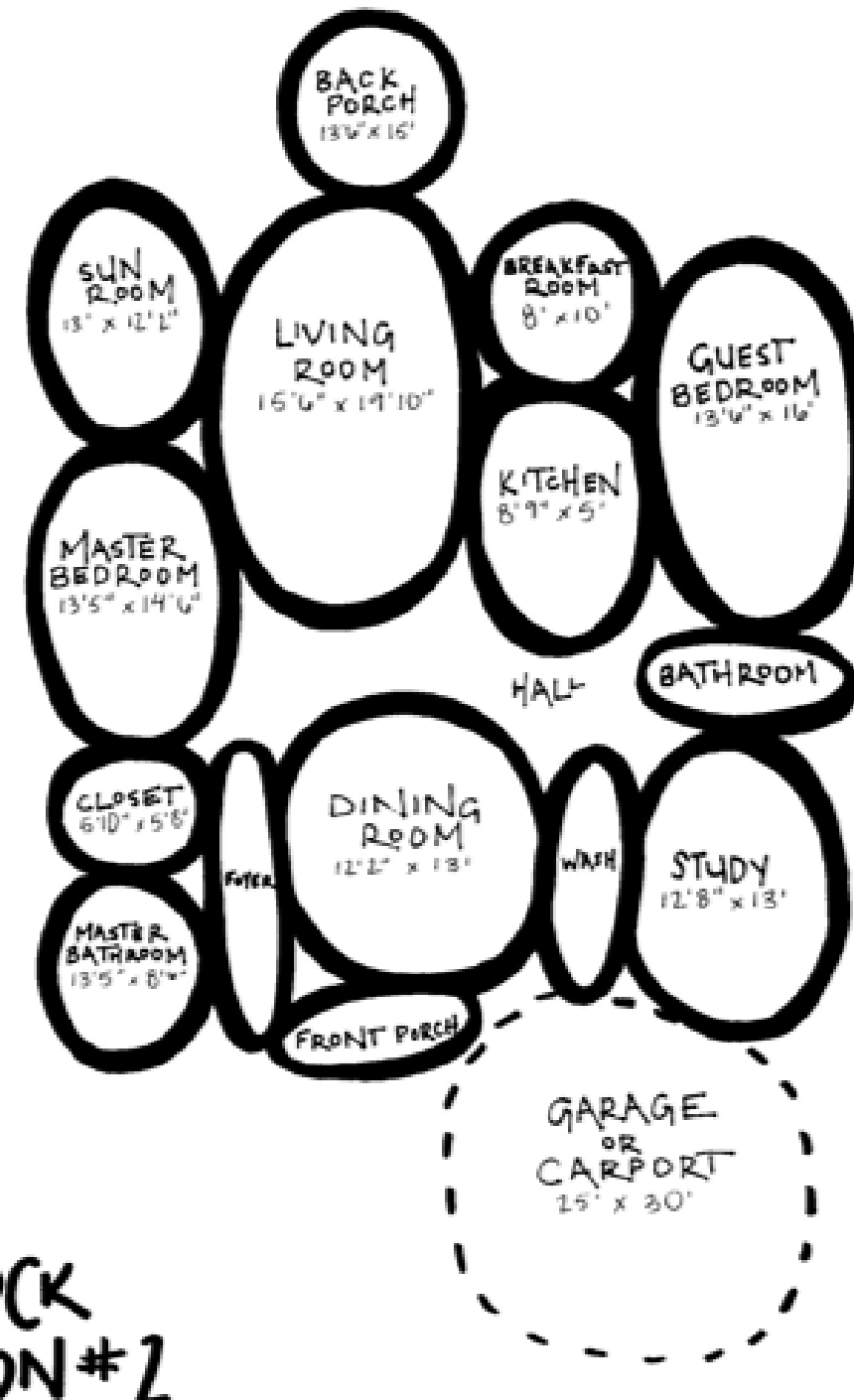


# FINE LIKE WINE

## BLOCK DIAGRAMS



**BLOCK  
OPTION #1**  
C. McKENZIE LOVE



**BLOCK  
OPTION #2**  
C. McKENZIE LOVE

# FINE LIKE WINE



# FINE **LIKE** WINE

---

Fine like Wine is an idea that represents the cycle of life, how all good things become better with age. This design represents the finer things, the richer things - the concept of being rewarded. When entering this space, the client will be pleasantly surprised from the small details that complete the overall image. The details are most important for this design to flow smoothly - the goal being, the fewer, finer pieces, are more valuable than the several, economic pieces. Not too busy, but not too boring, and an environment that portrays neatness. The color scheme of this design will be gentle on the aging eye, but also provide a comforting scheme that the user is familiar with; colors mainly used in the late 1960's, a conservative pallet that represents aspects of nature. While obeying the precautions and accommodations required for this space, the client will still feel comfortable and free. That meaning, that the common factors needed to make this design accessible will be blended as best as possible to make certain that the user doesn't have a constant reminder of any disability.

The client is hoped to feel comfortable in this space, feel proud of the environment that they're in, and the handwork it has taken to get there... The users of this space will be excited from the idea of how the finer things are not only better with age, but worth the wait.

