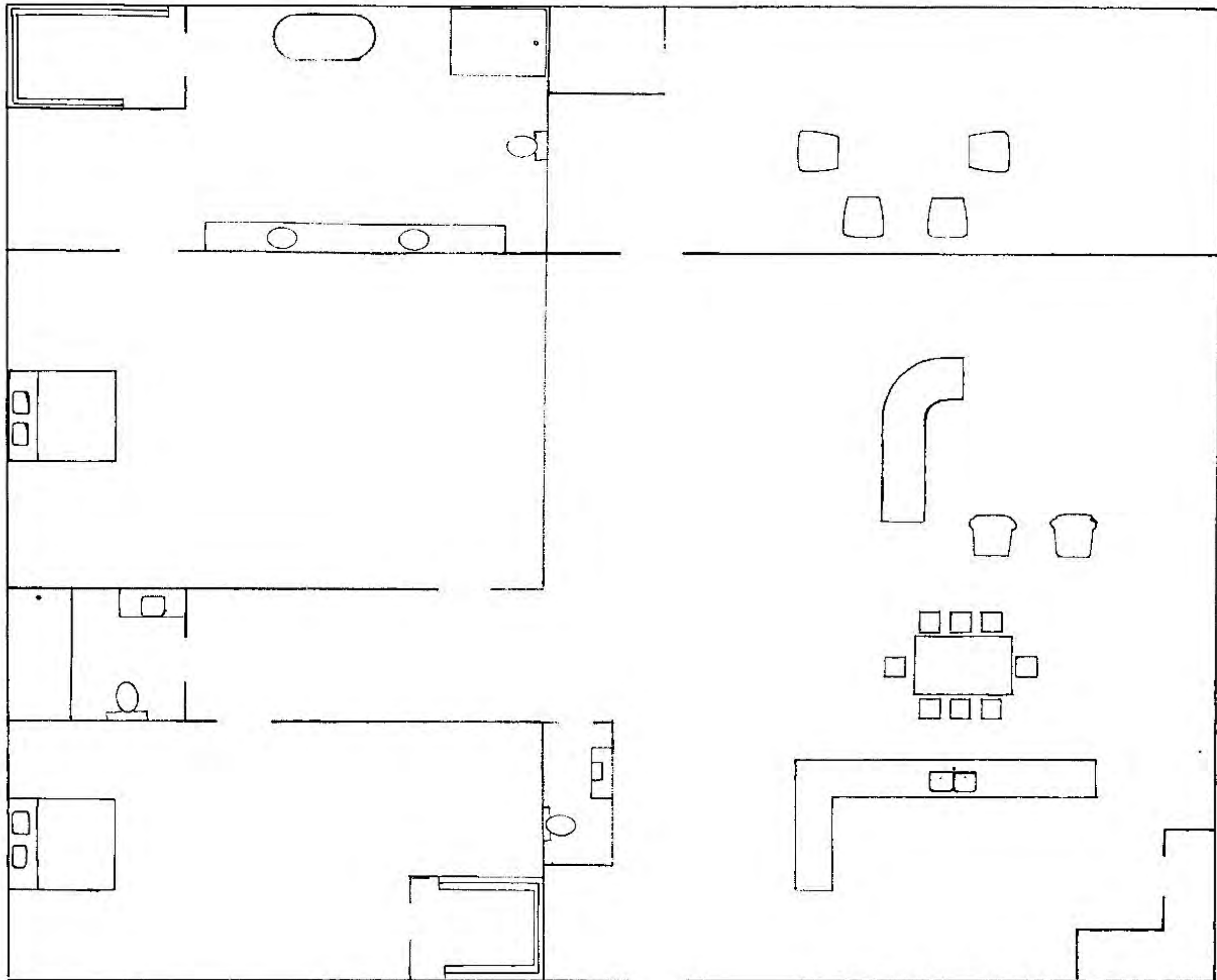
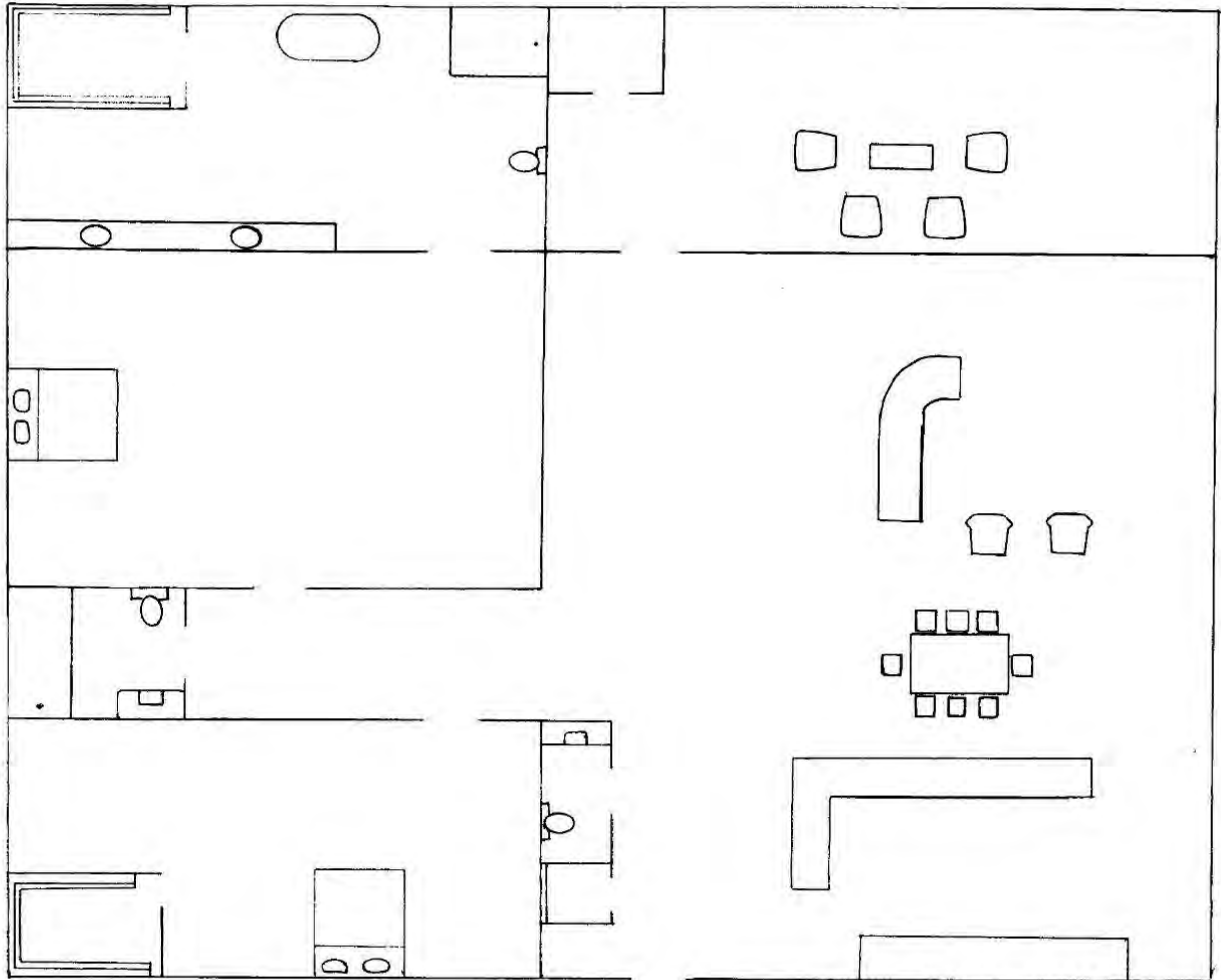




Portfolio Two
3102 Interior Design Studio III
Fall 2019
Caroline Peebles

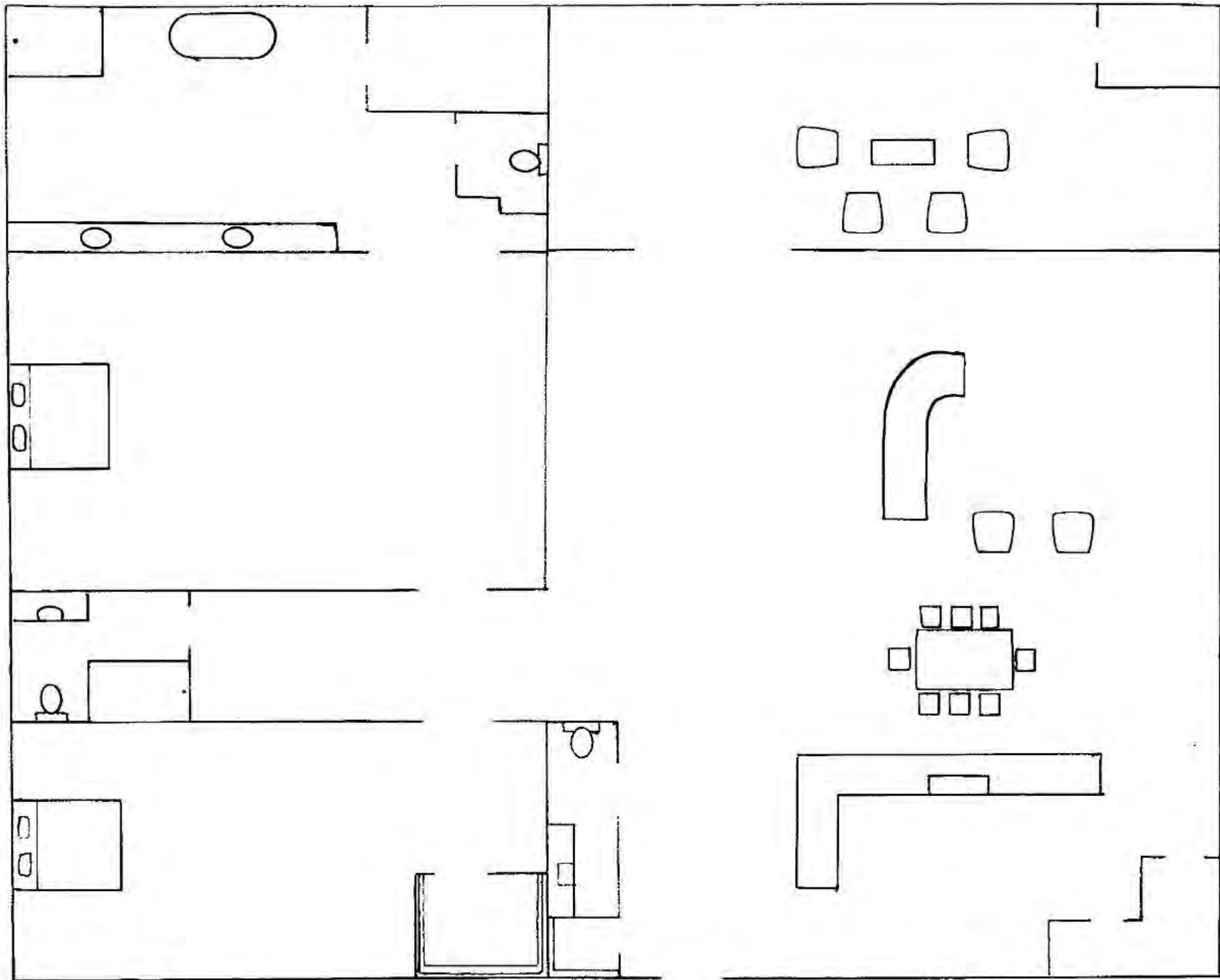


SPACE PLAN 1



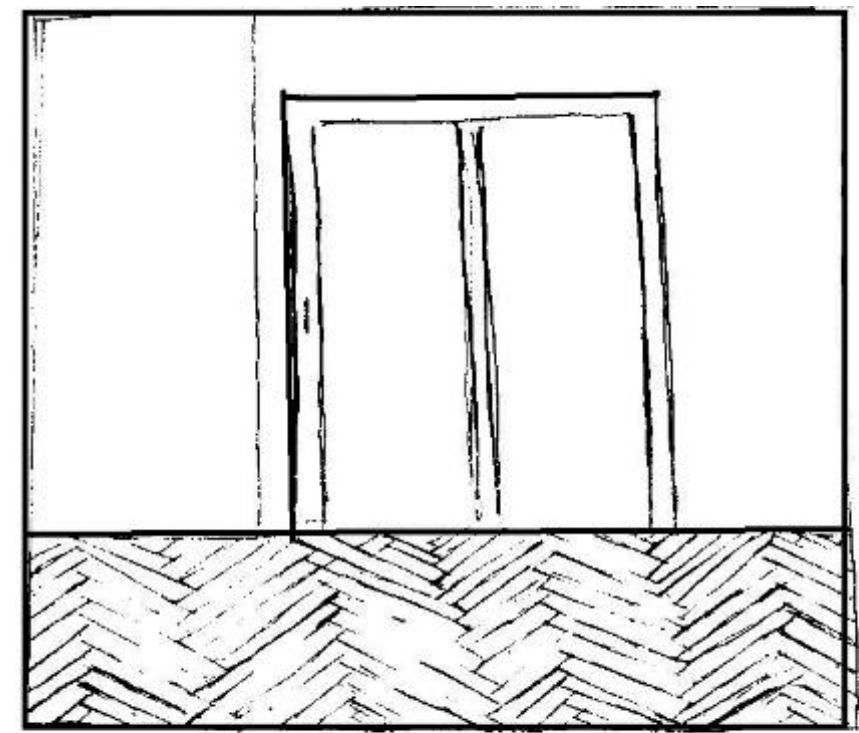
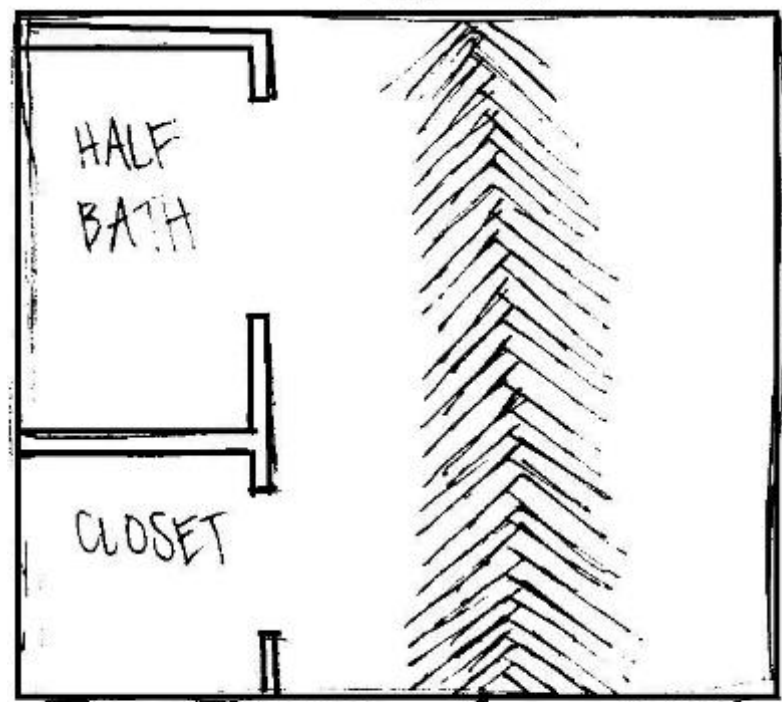
SPACE PLAN 2



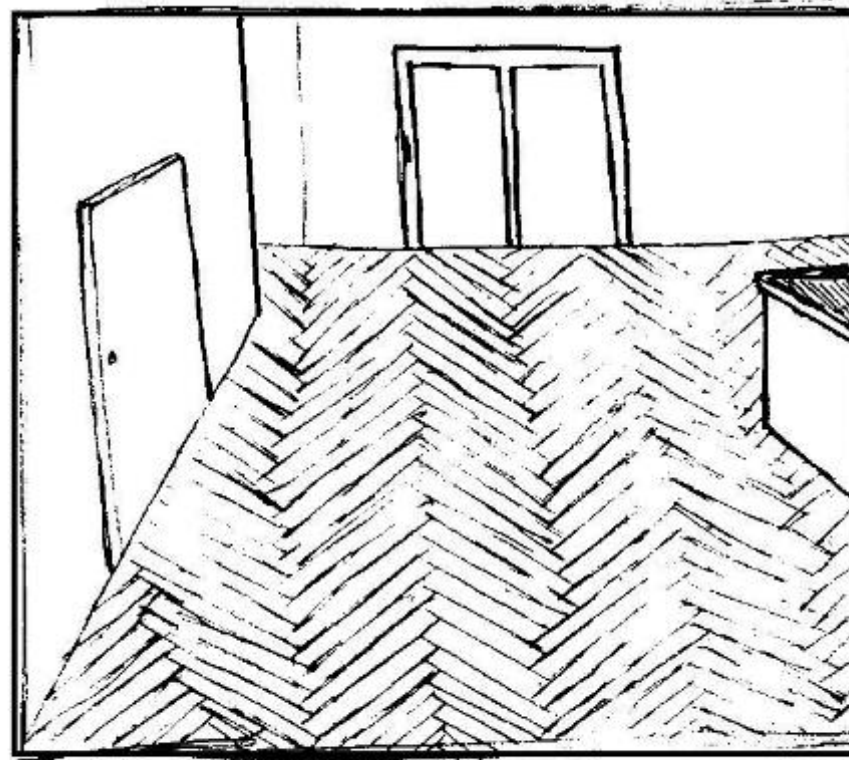


SPACE PLAN 3

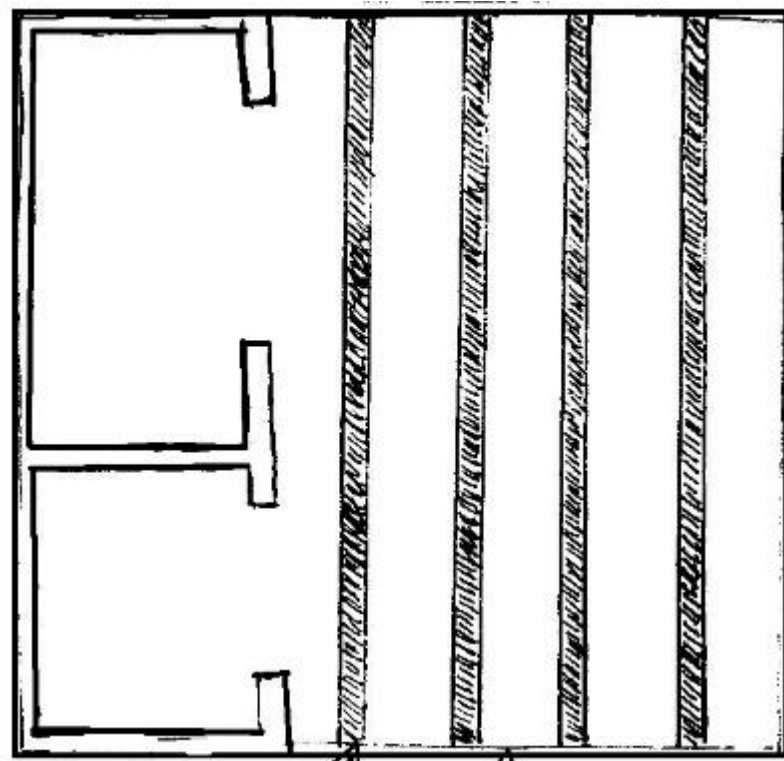




Herringbone
hardwood flooring
pulling people into
the space



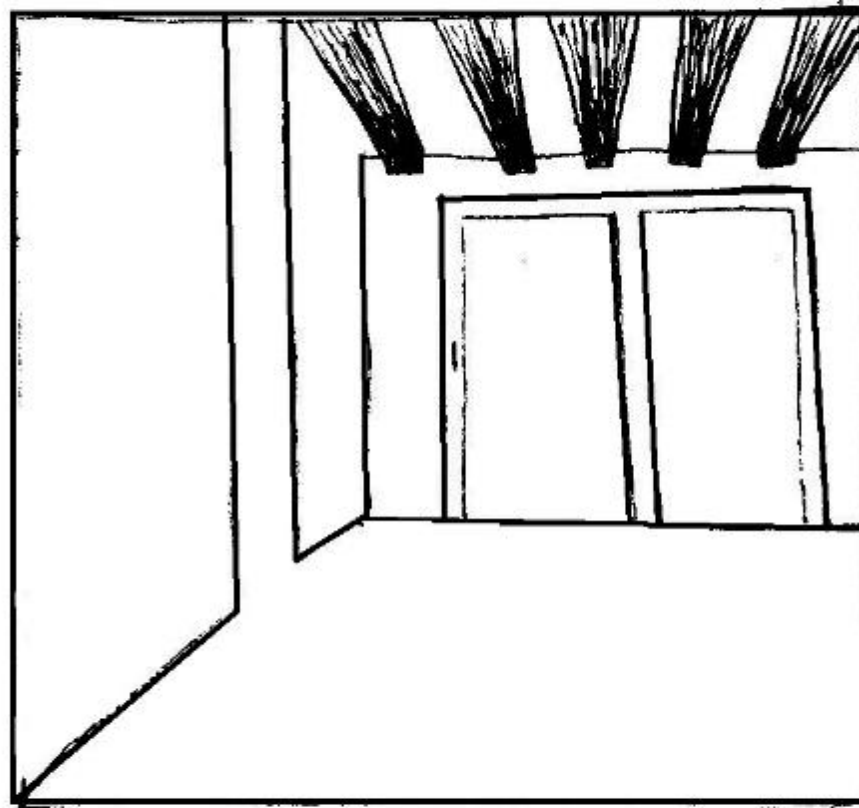
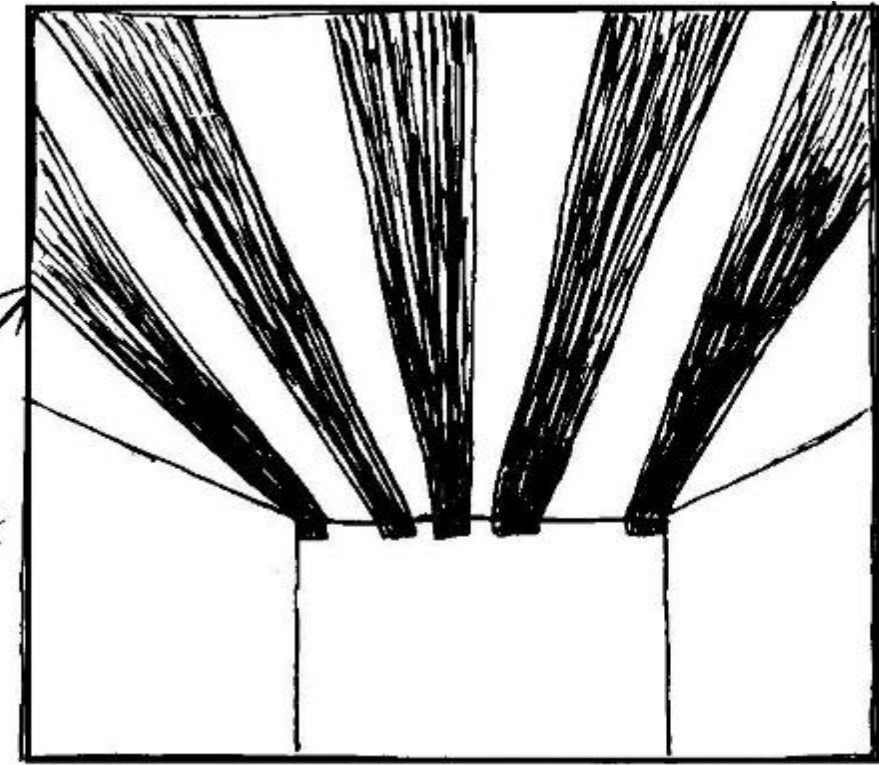
Starting herringbone pattern
at the entry facing inward



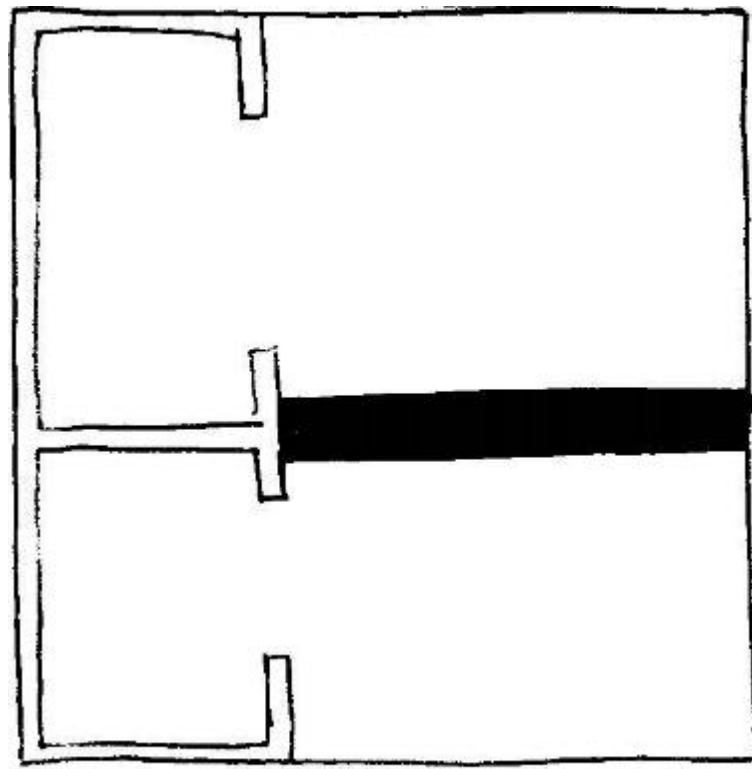
Exposed Wood Beams extending to the back of the room

ENTRY

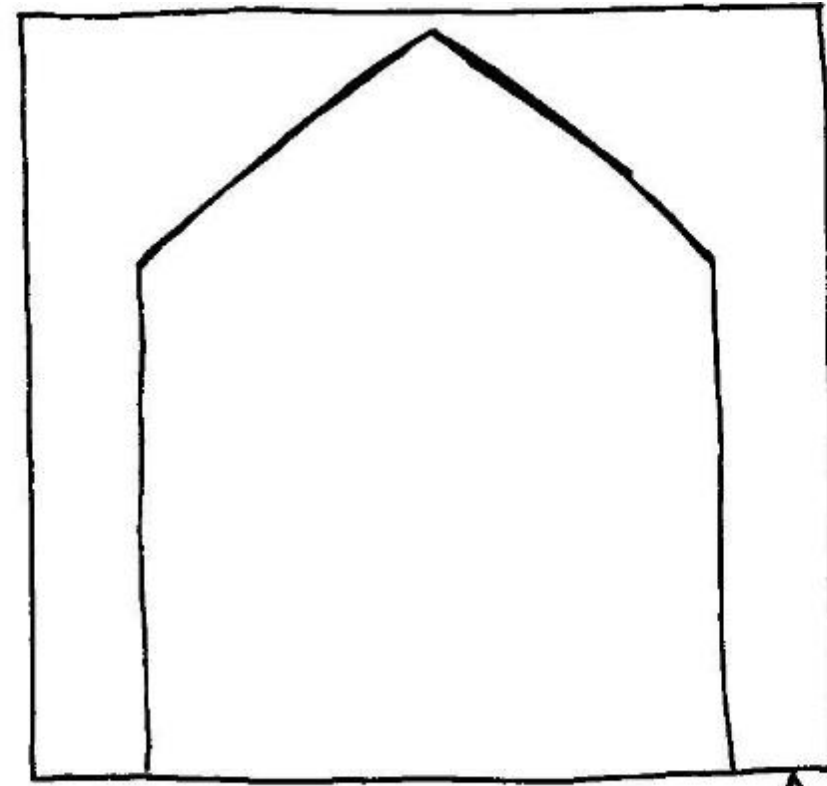
pull the eye down to back of the room



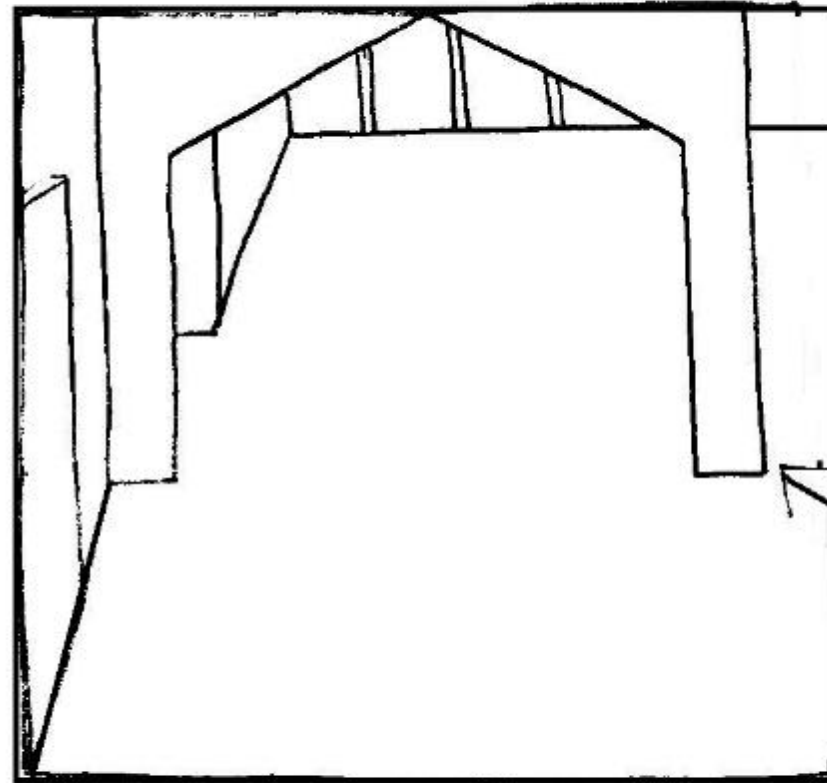
raw wood or painted white?



Wooden framed
Entryway

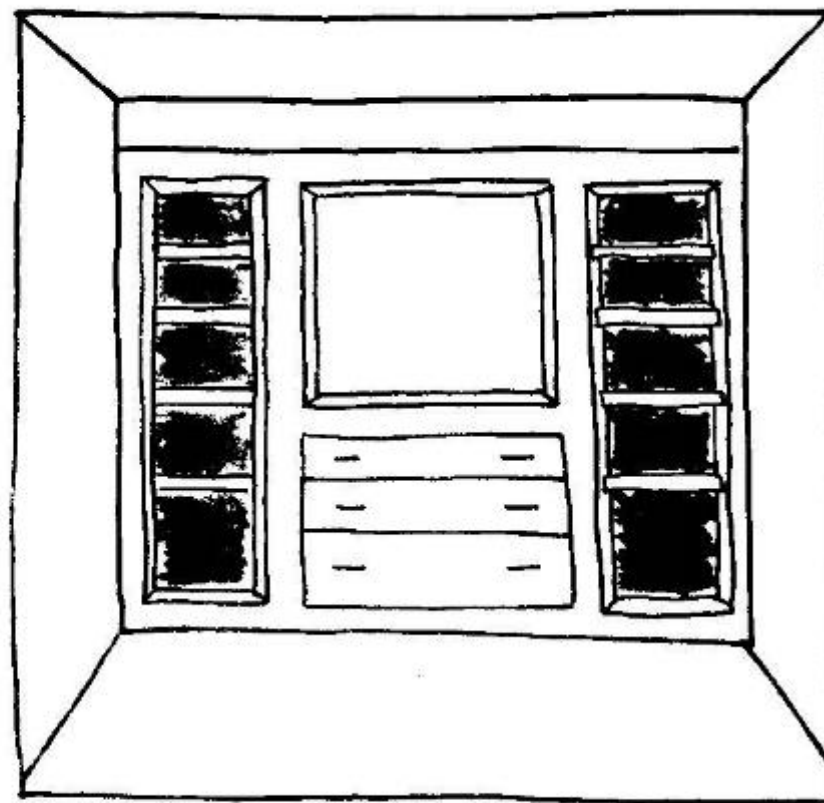
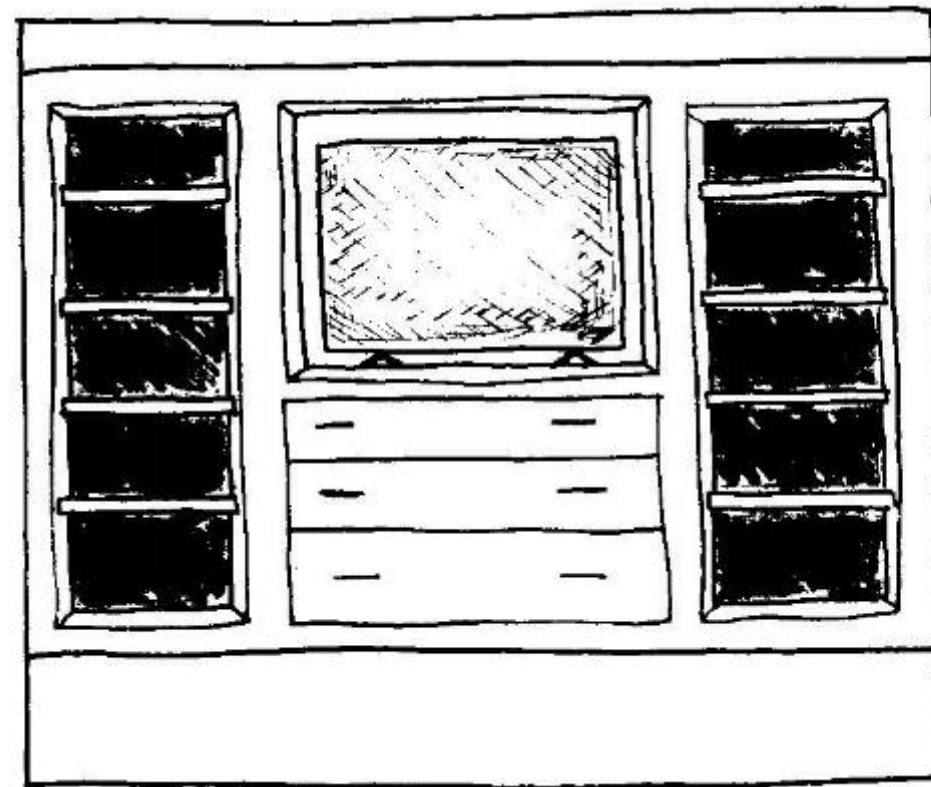
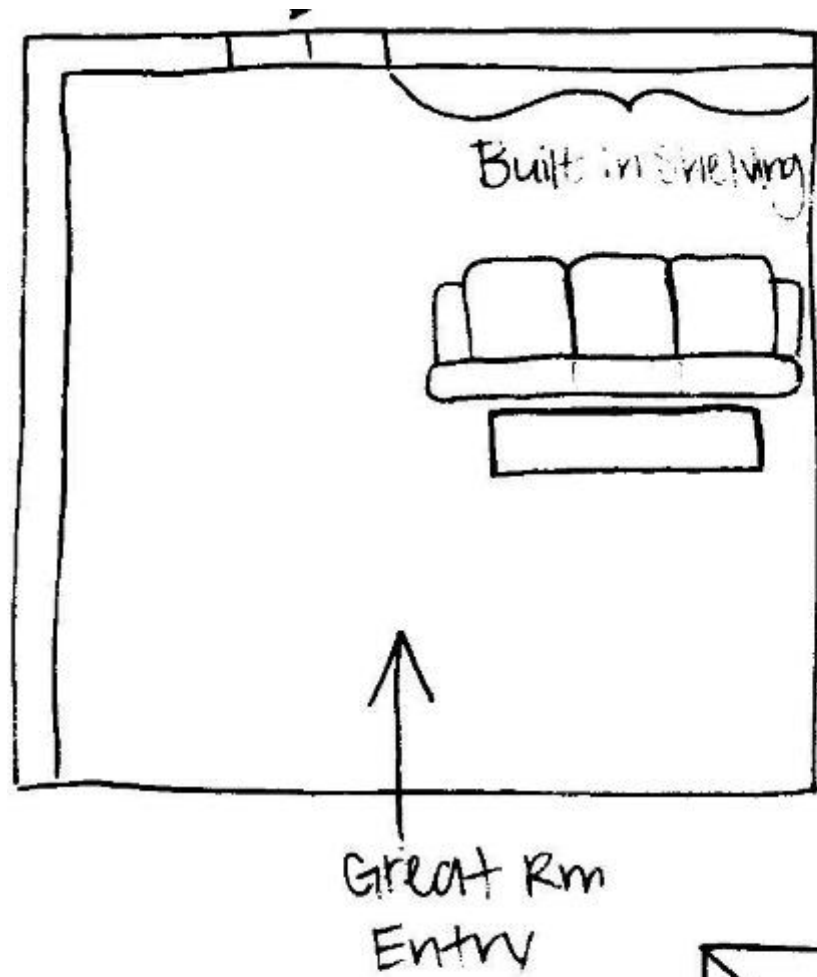


in between
hall closet &
bathroom
opens
up to
Kitchen on
the right

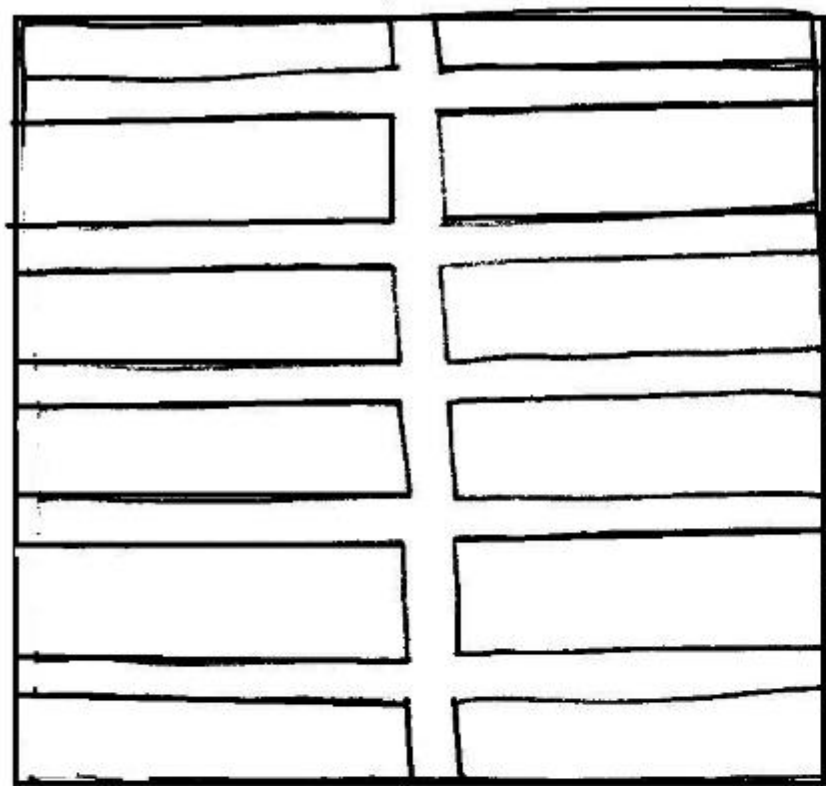


White or
same raw
wood as ceiling
beams

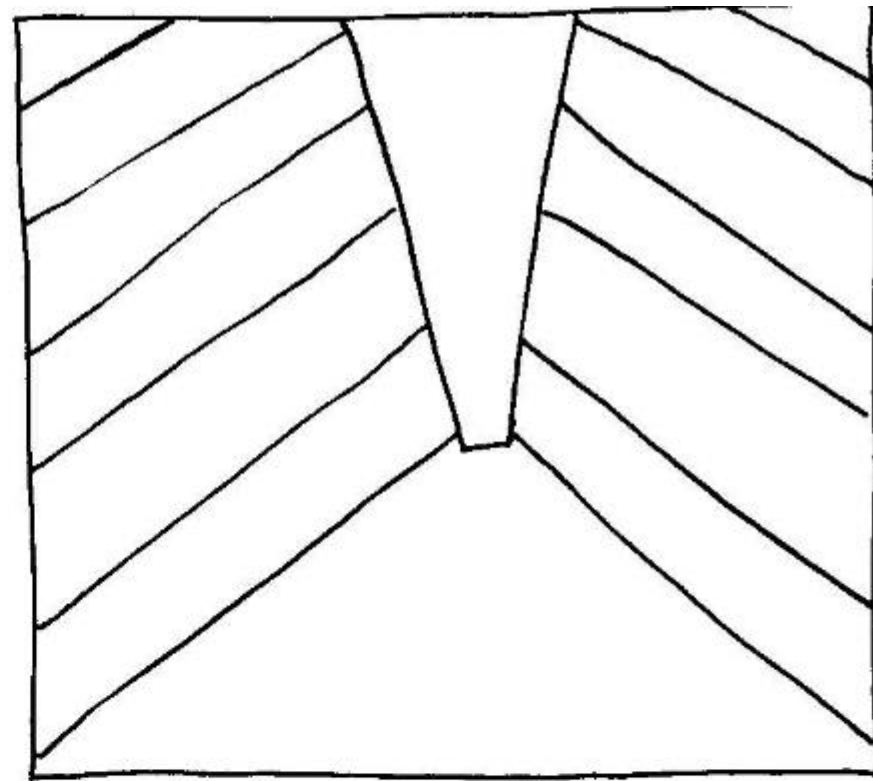
ENTRY 1



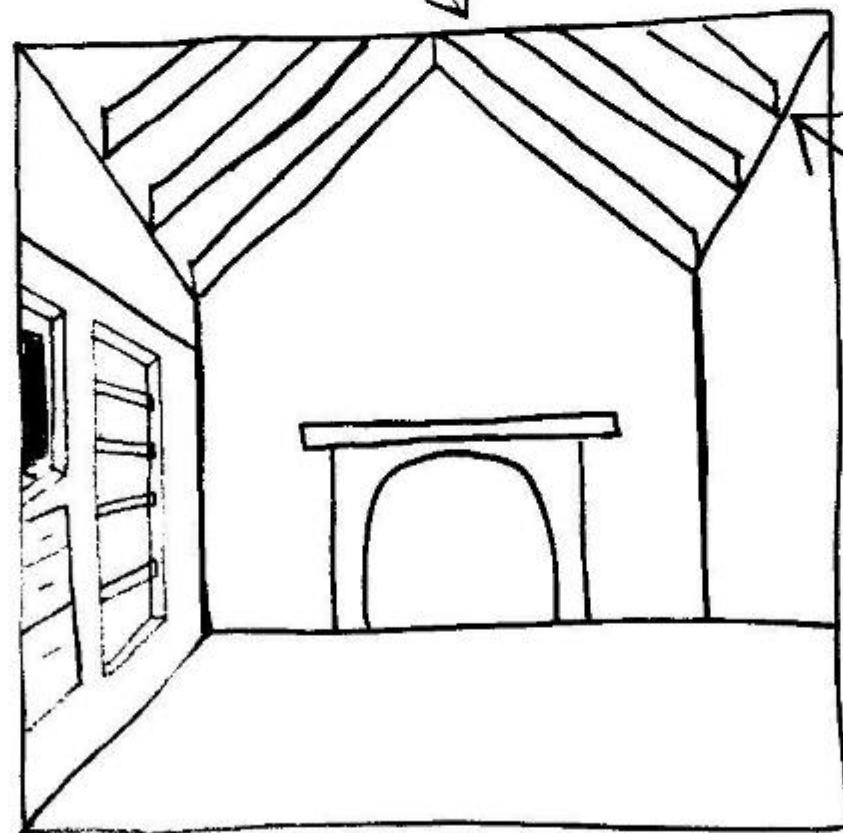
← one focal point
of the room pulls
ppl to the Great
Rm.



↑
view looking up
at vaulted
ceiling & beams

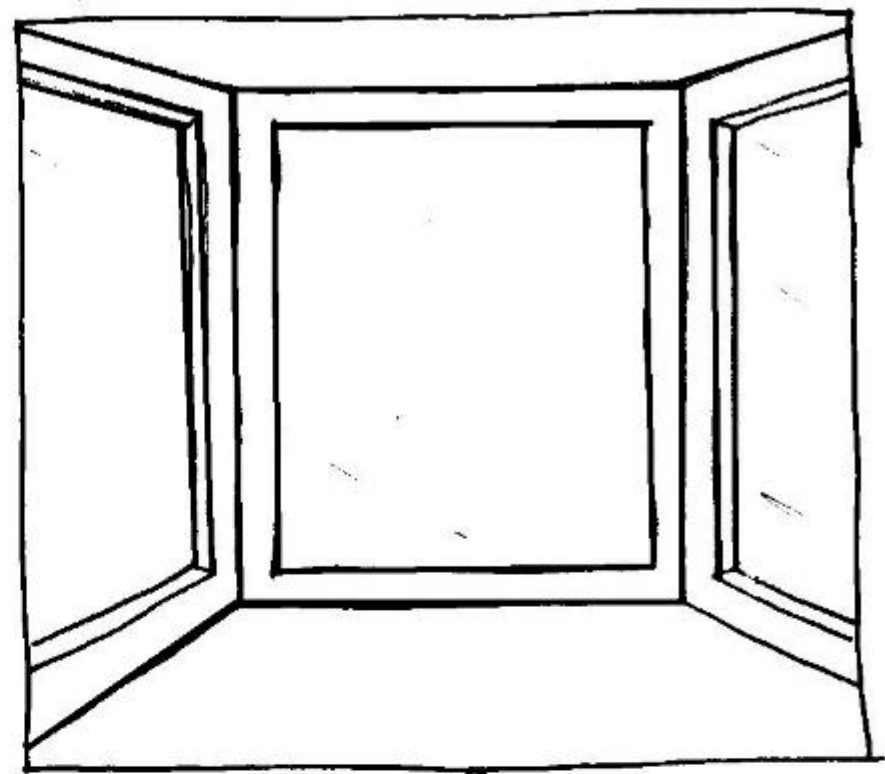
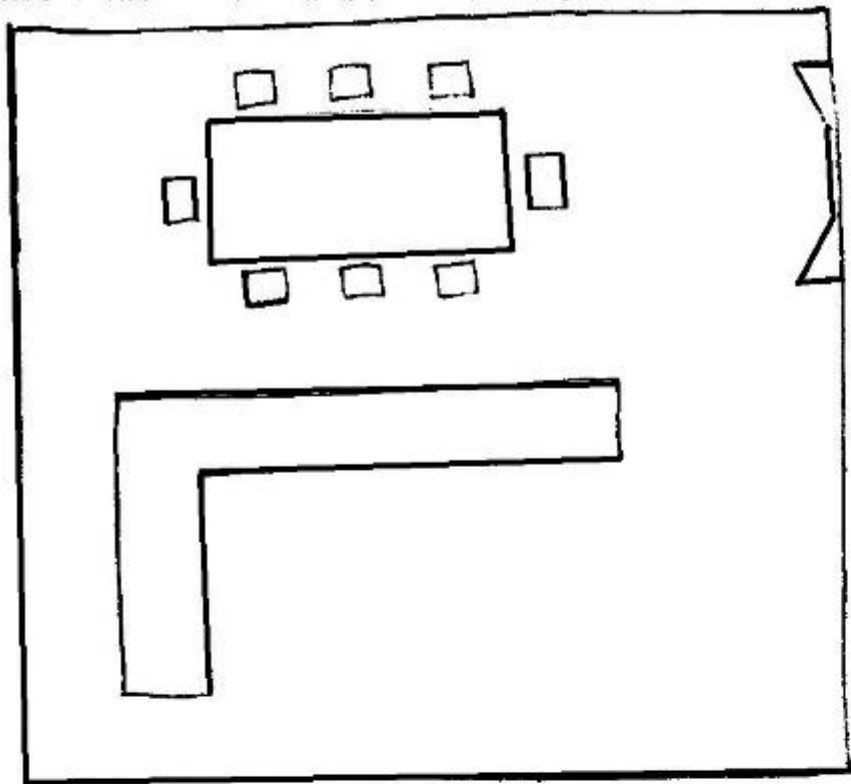


13'?

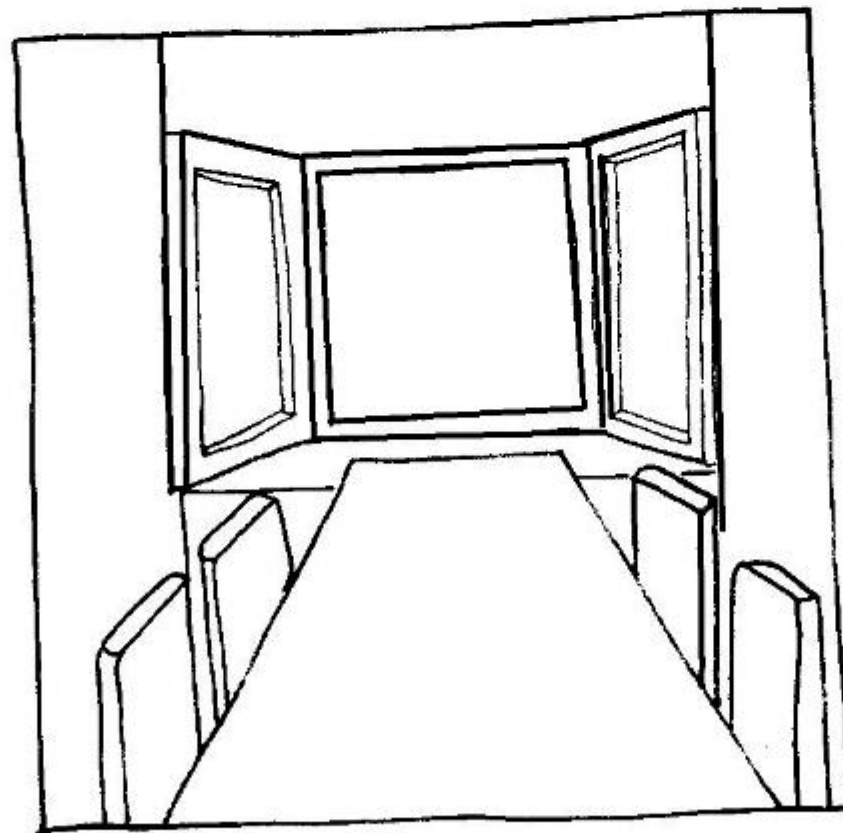


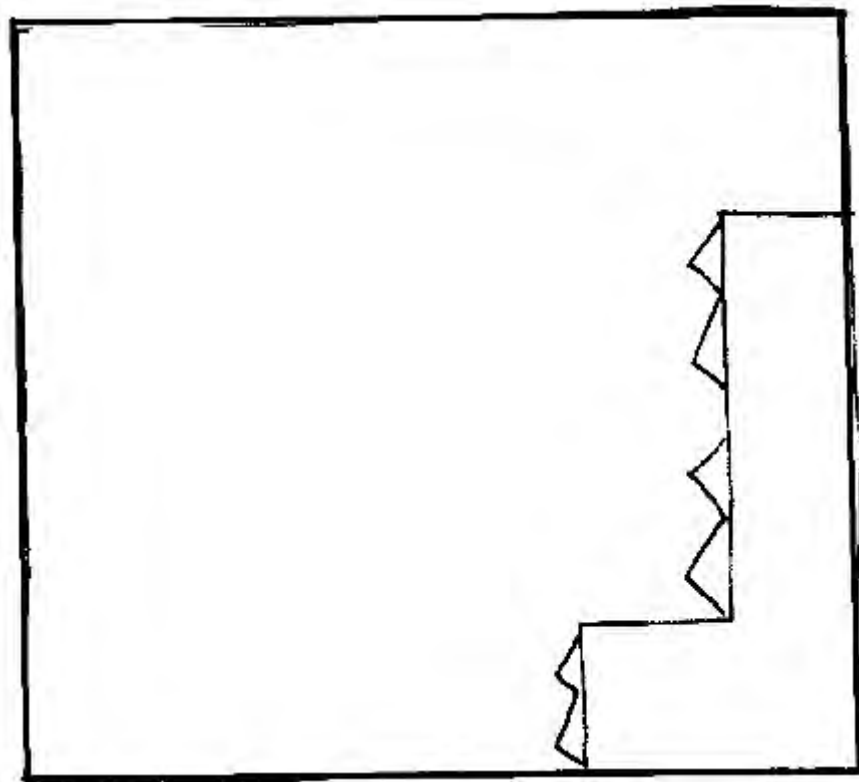
→ exposed wooden
beams accenting
high vaulted ceiling
to draw the eye up

CEILING / DAYLIGHTING 1



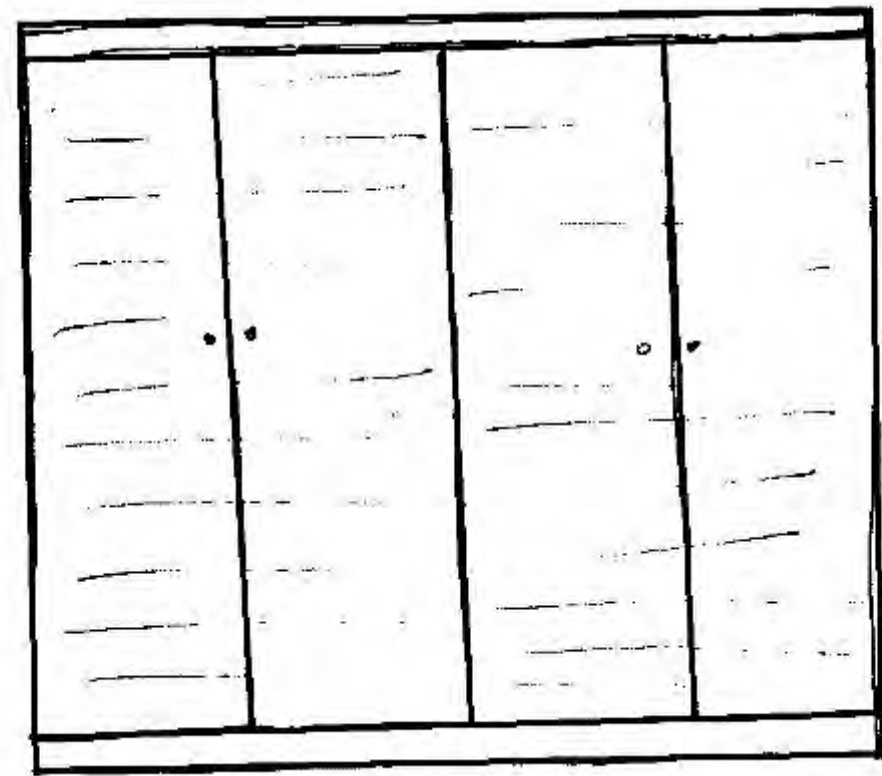
↑
Large Bay
Window will
allow more
natural light
into the space



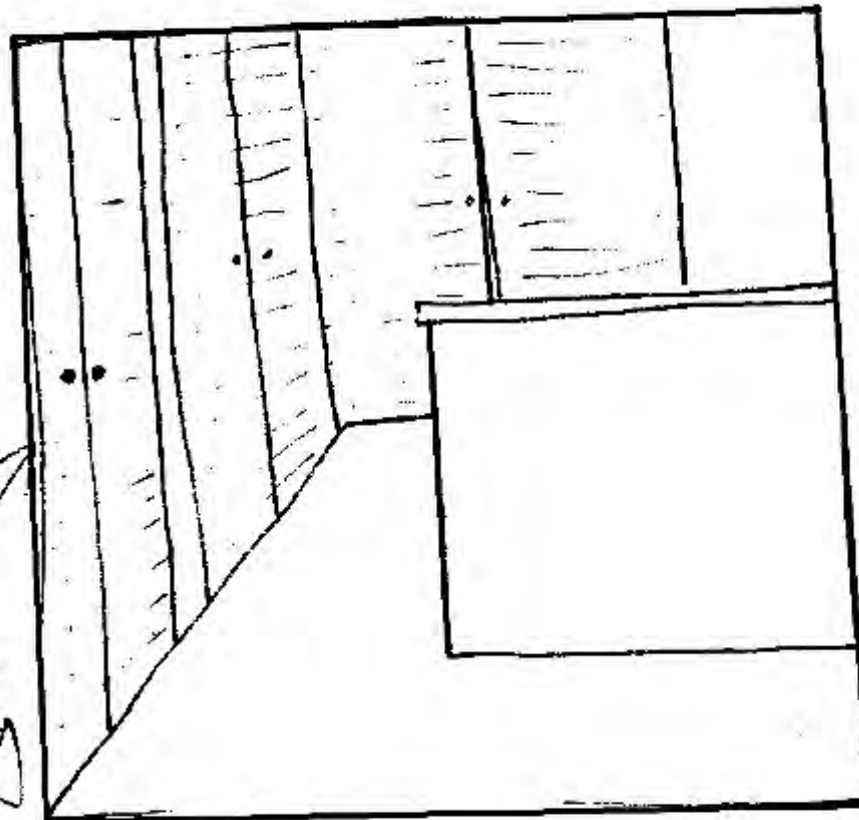


Laundry

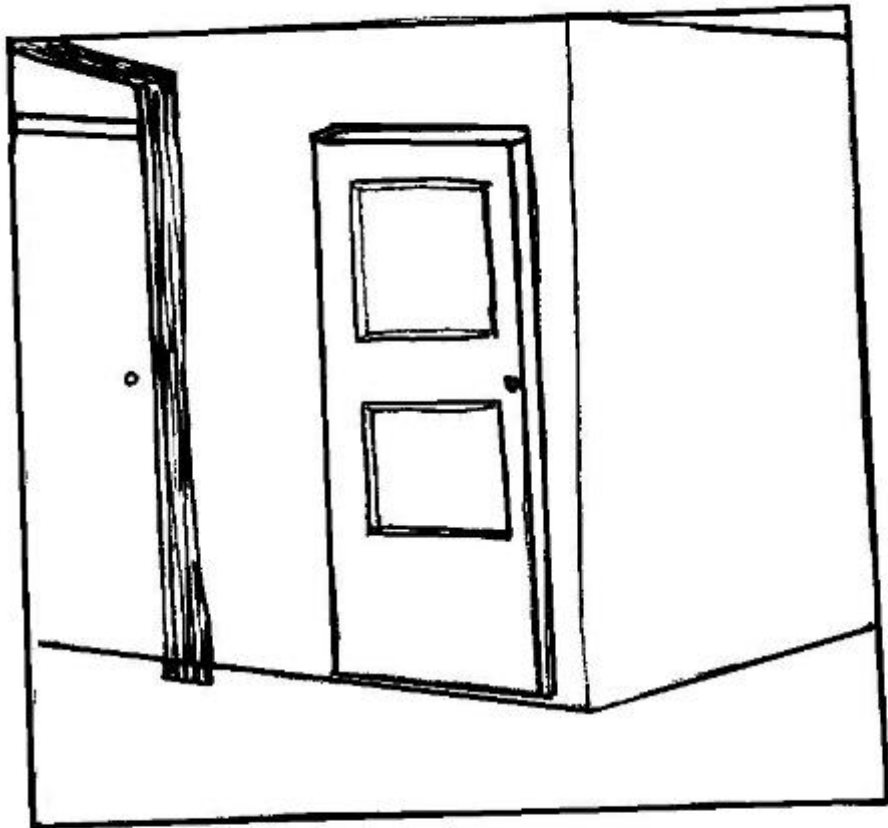
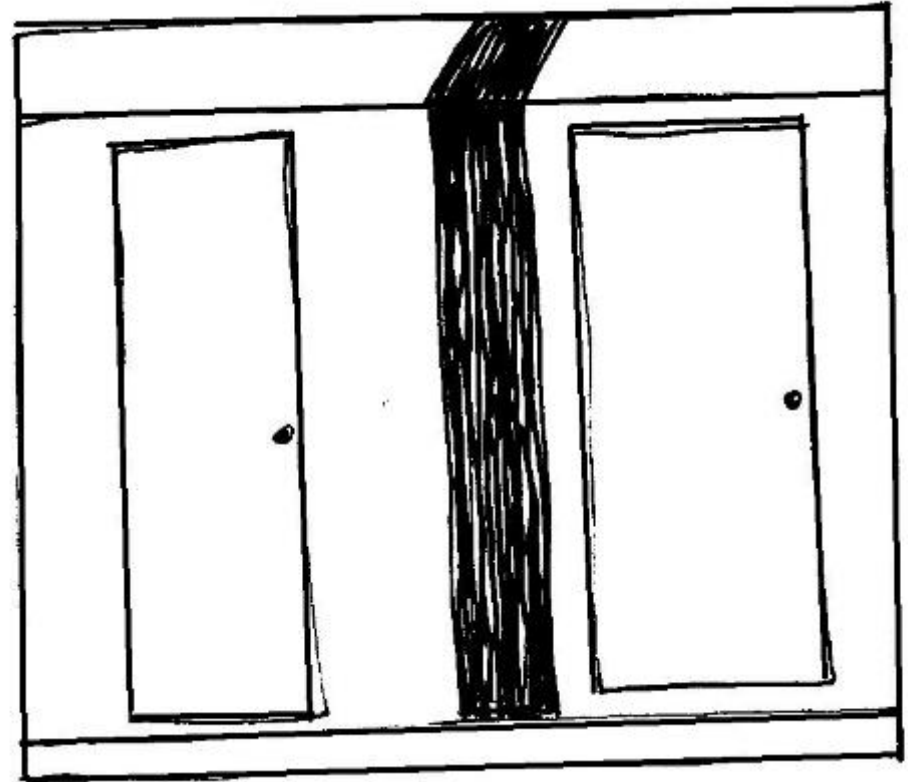
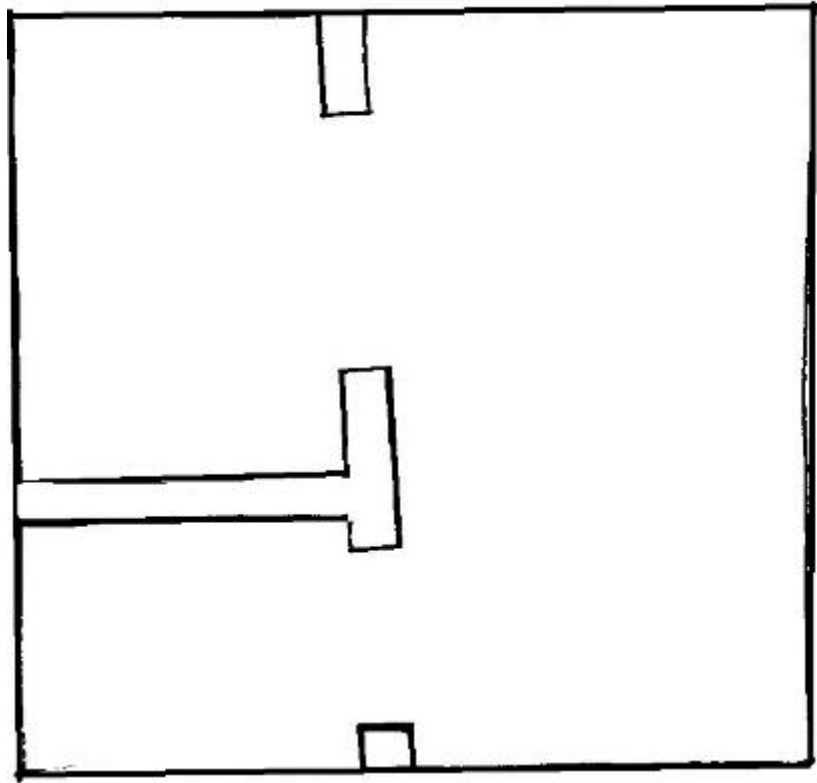
Pantry



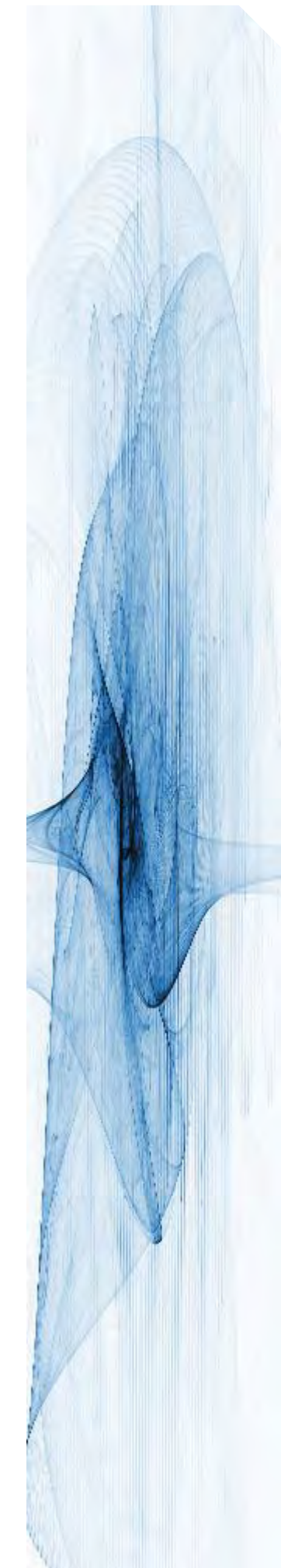
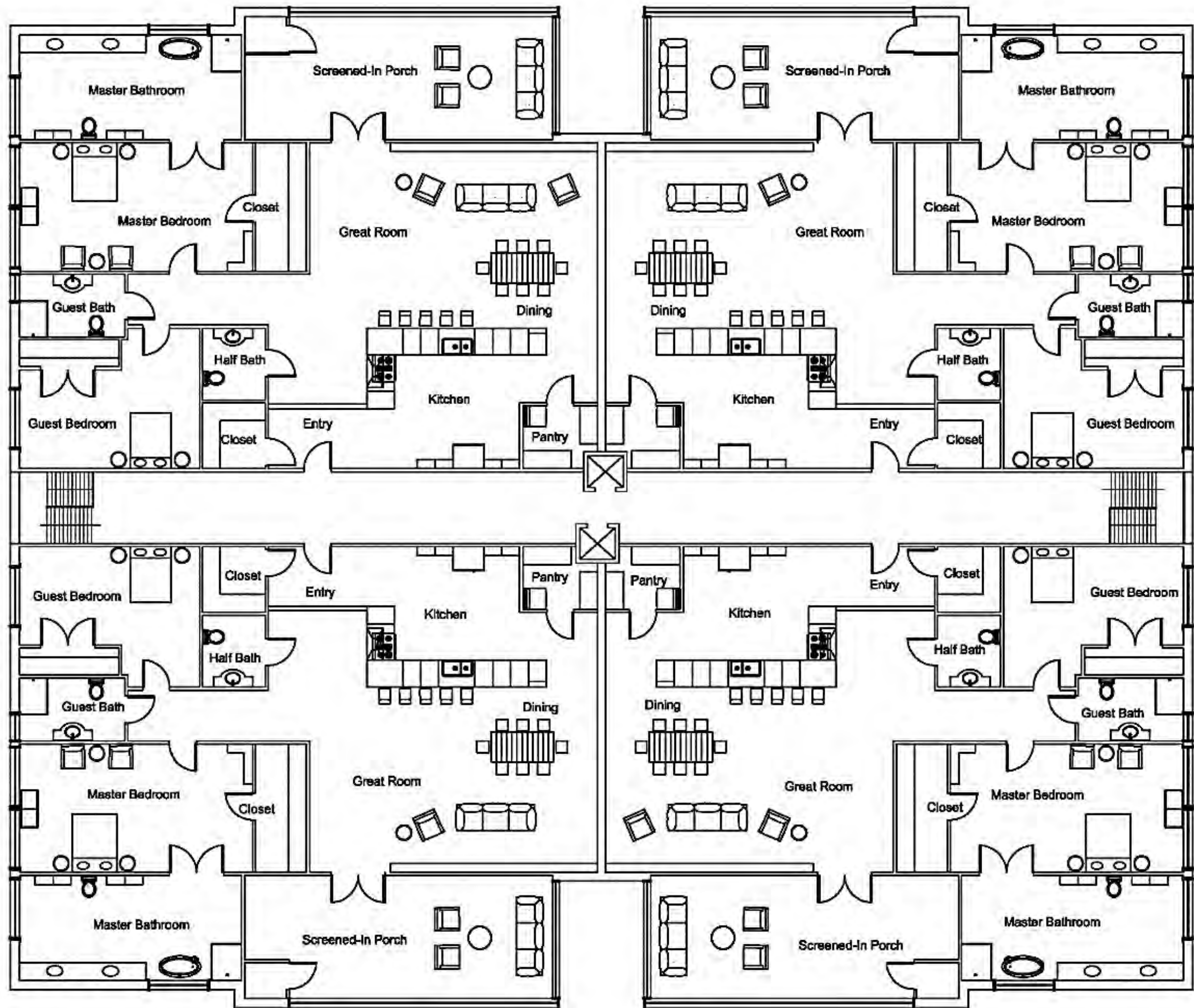
Tri-fold
doors for
more walking
room

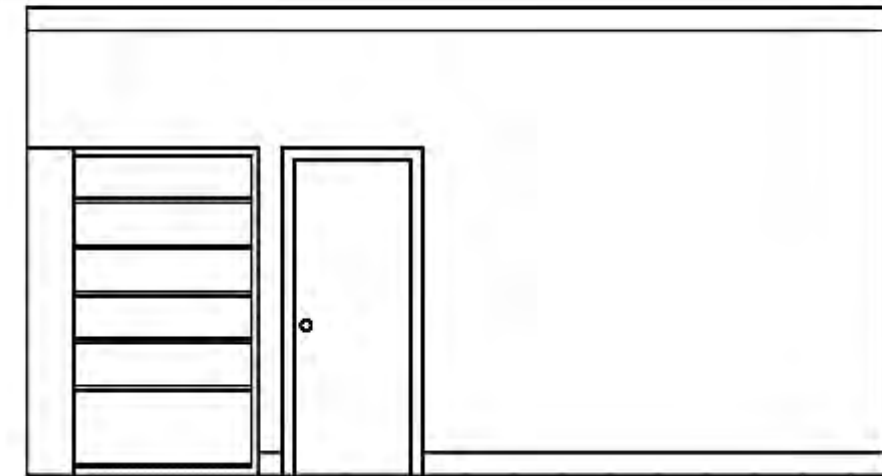
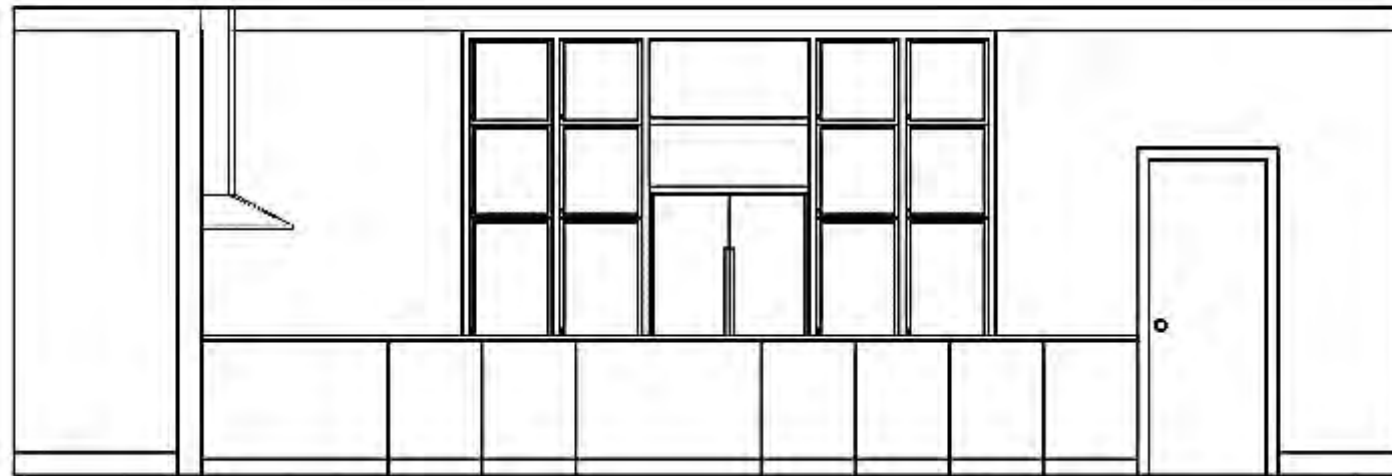
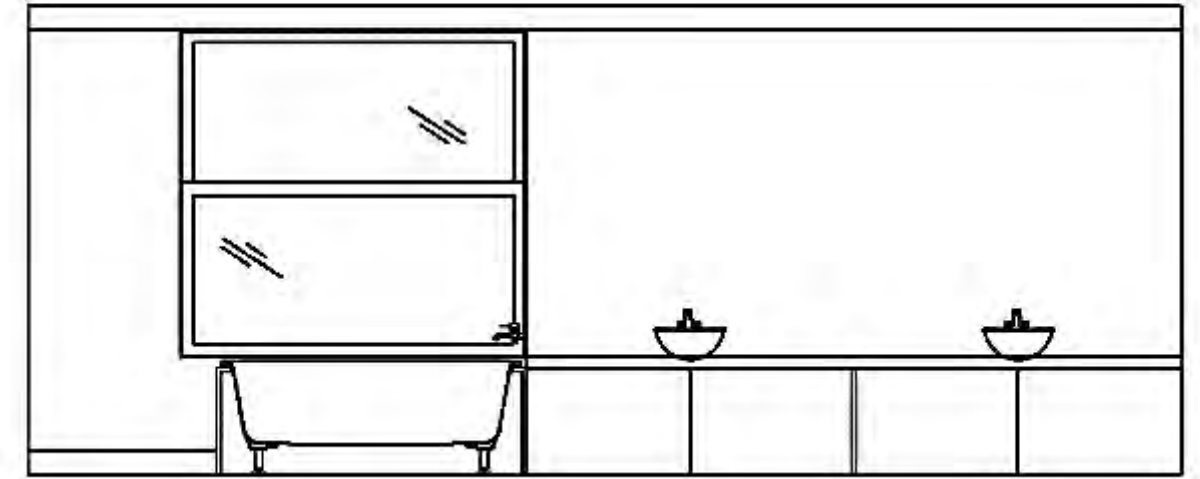
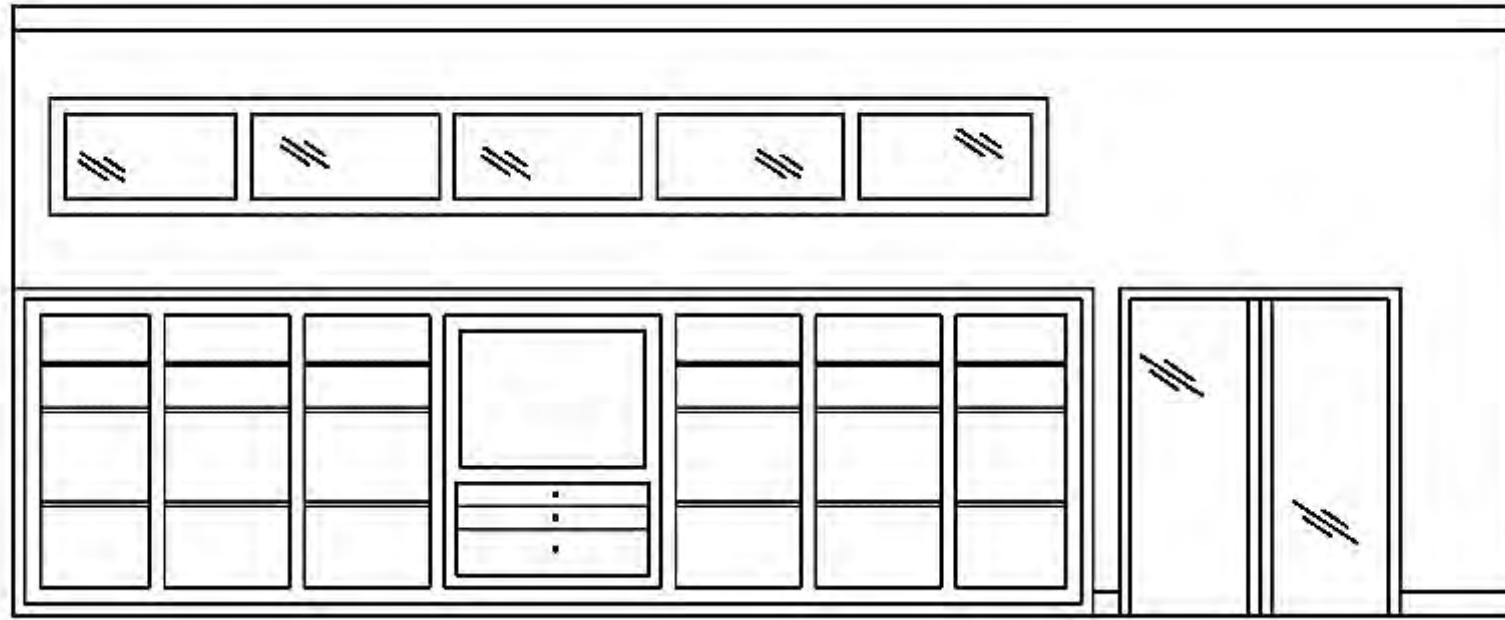


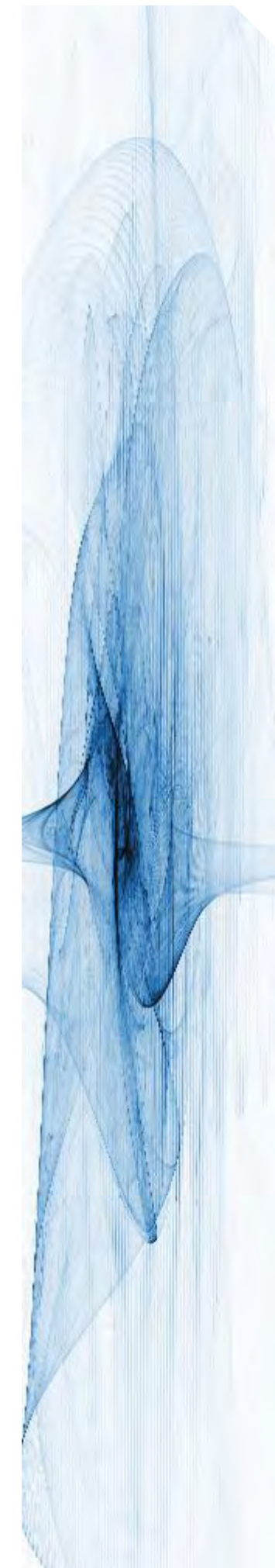
SUPPORT SPACES I

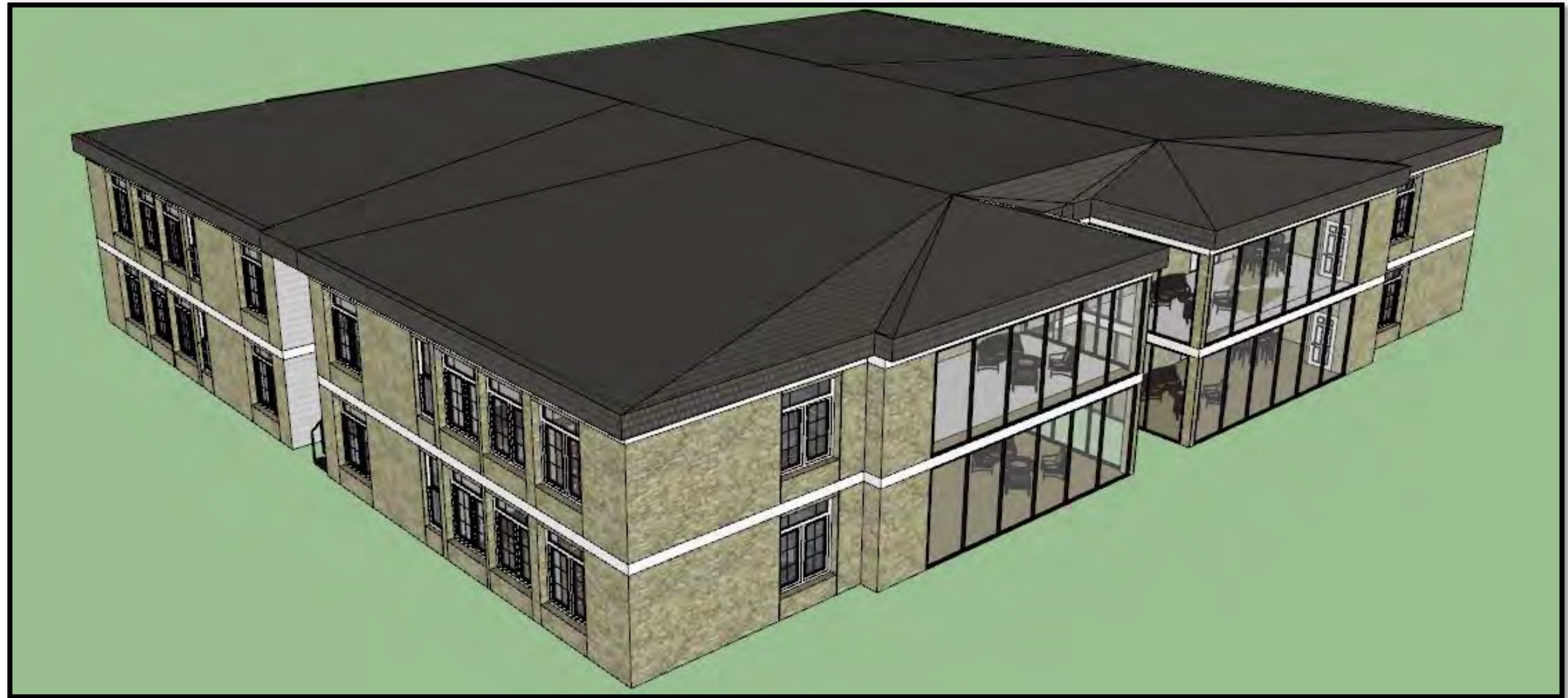


SUPPORT SPACES 2.





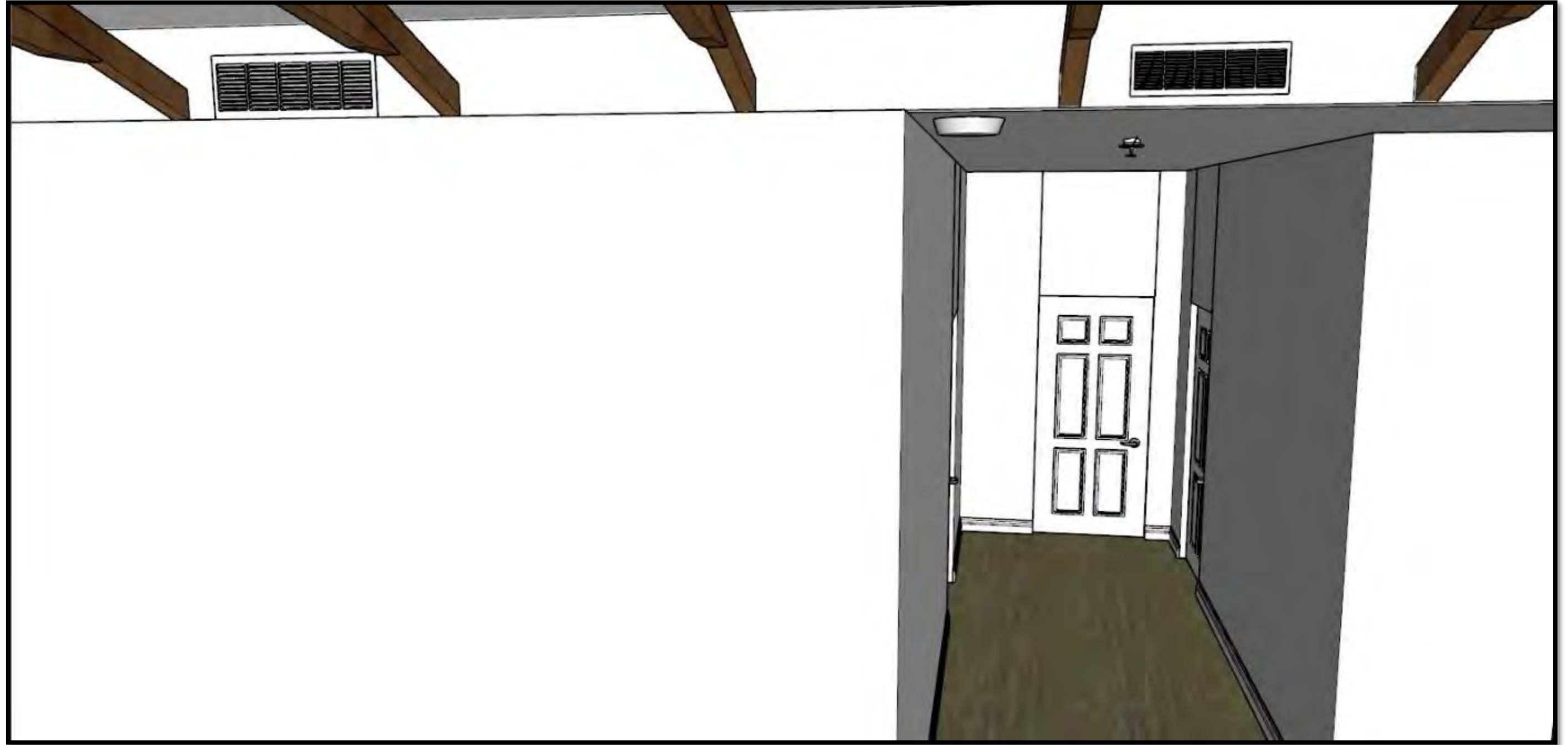










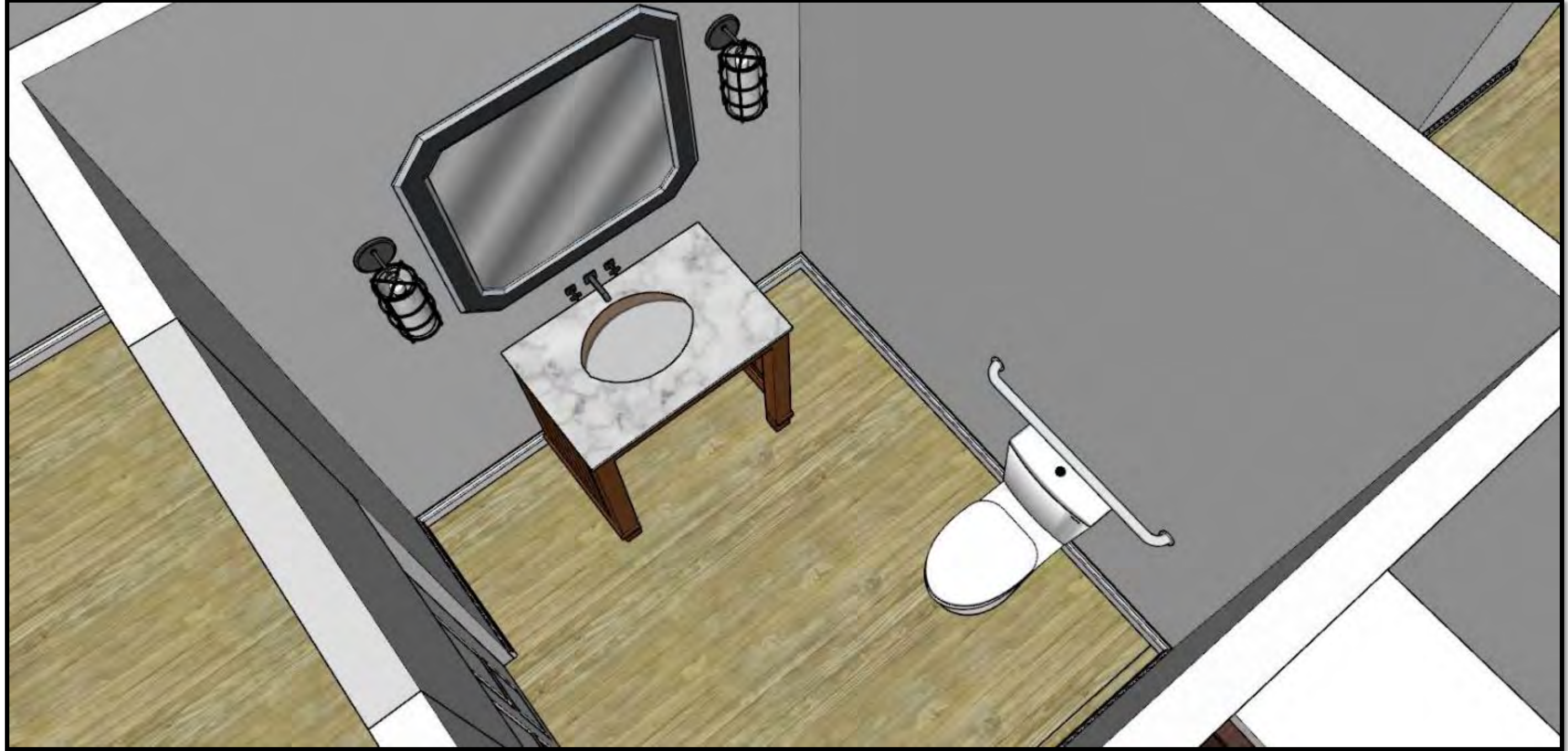


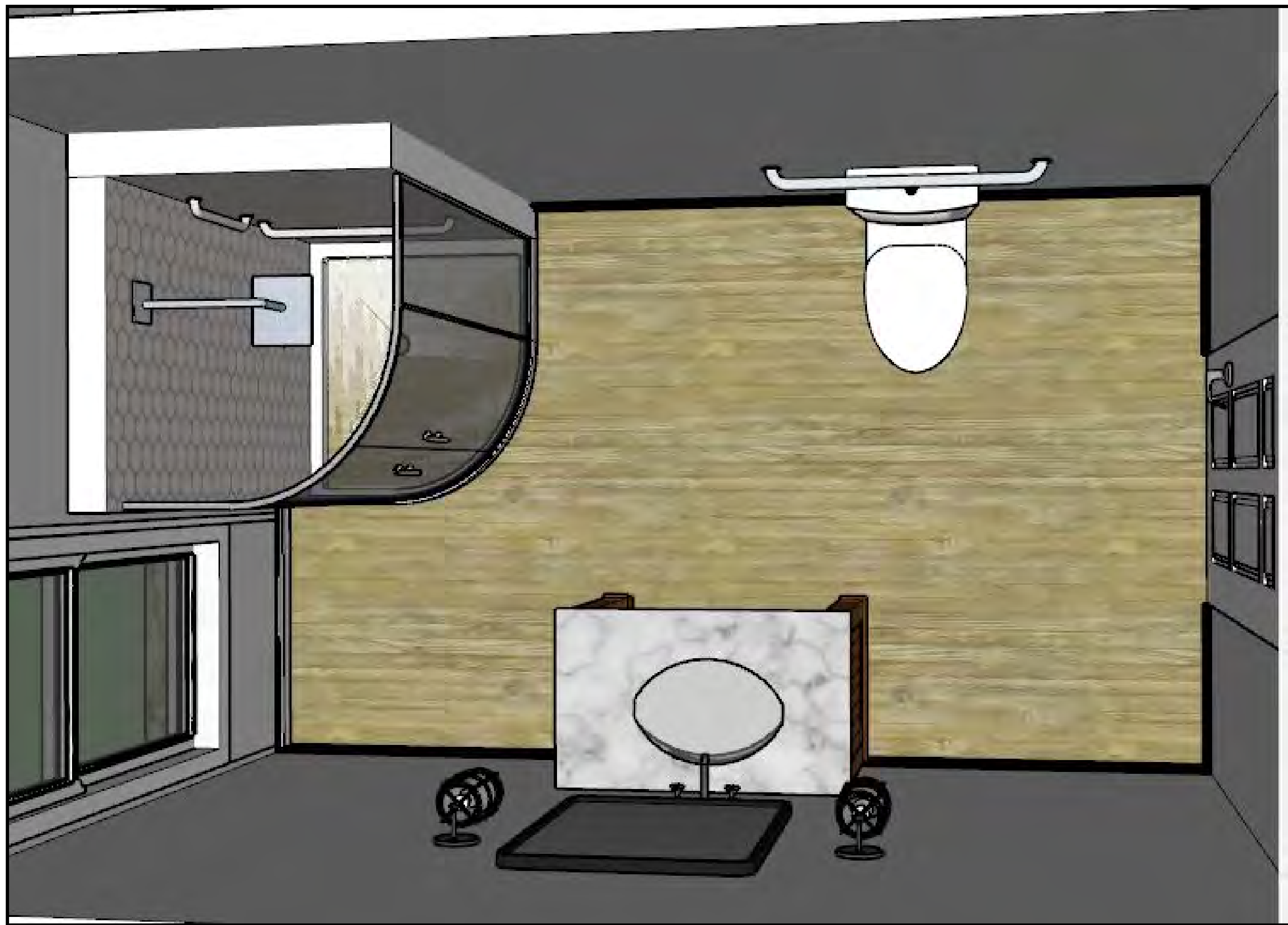


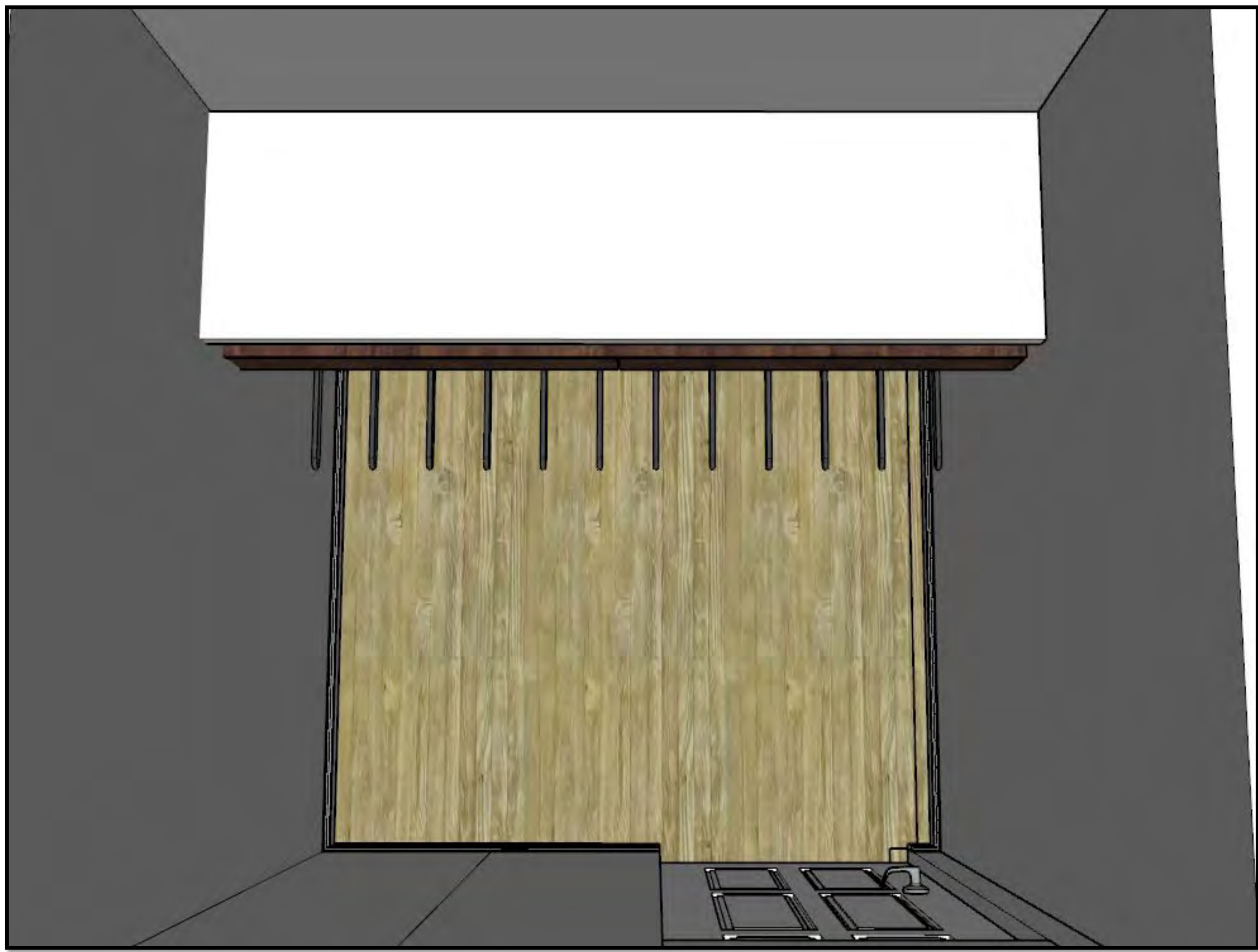


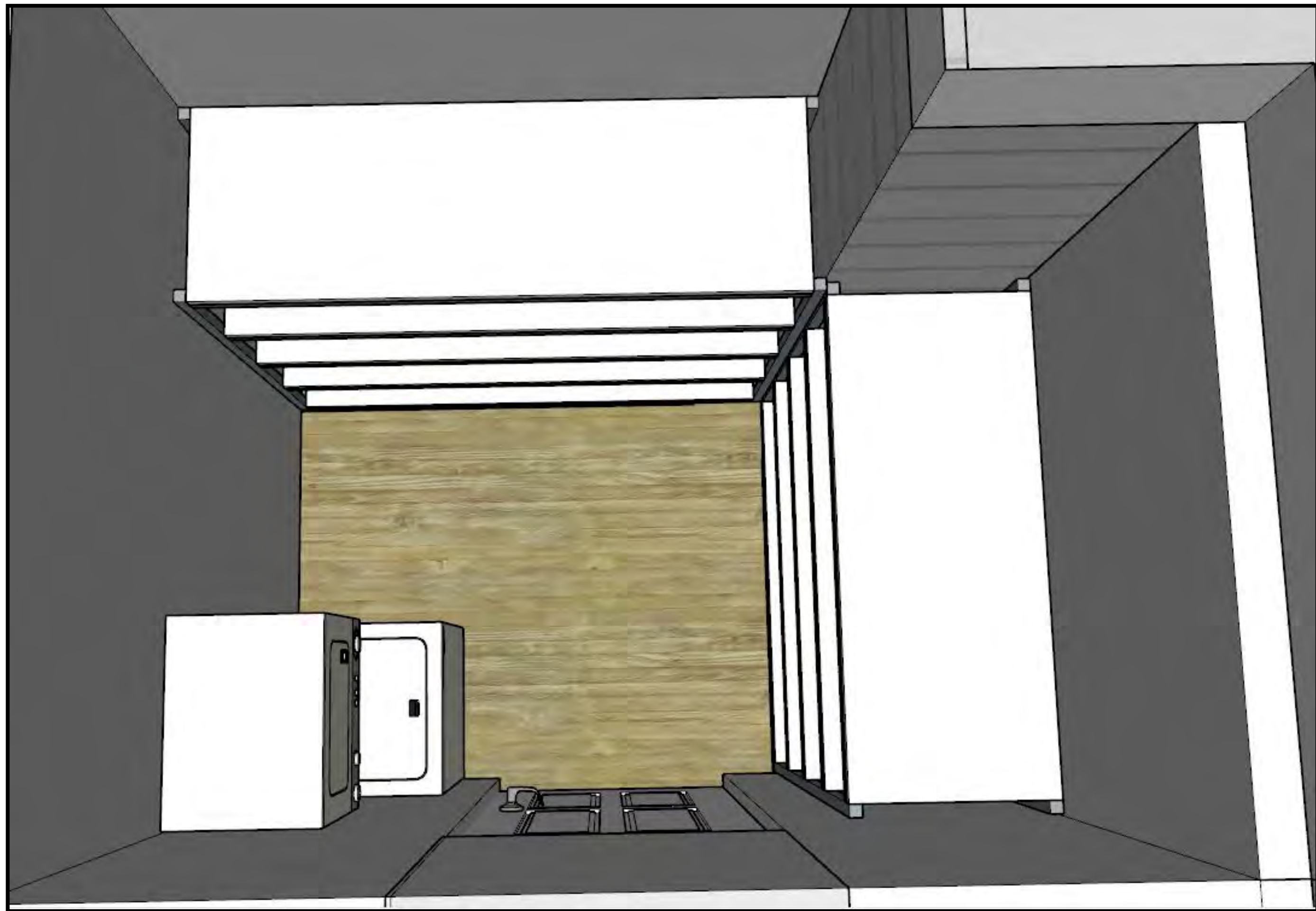












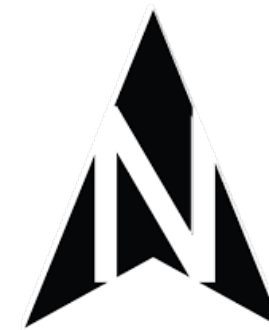
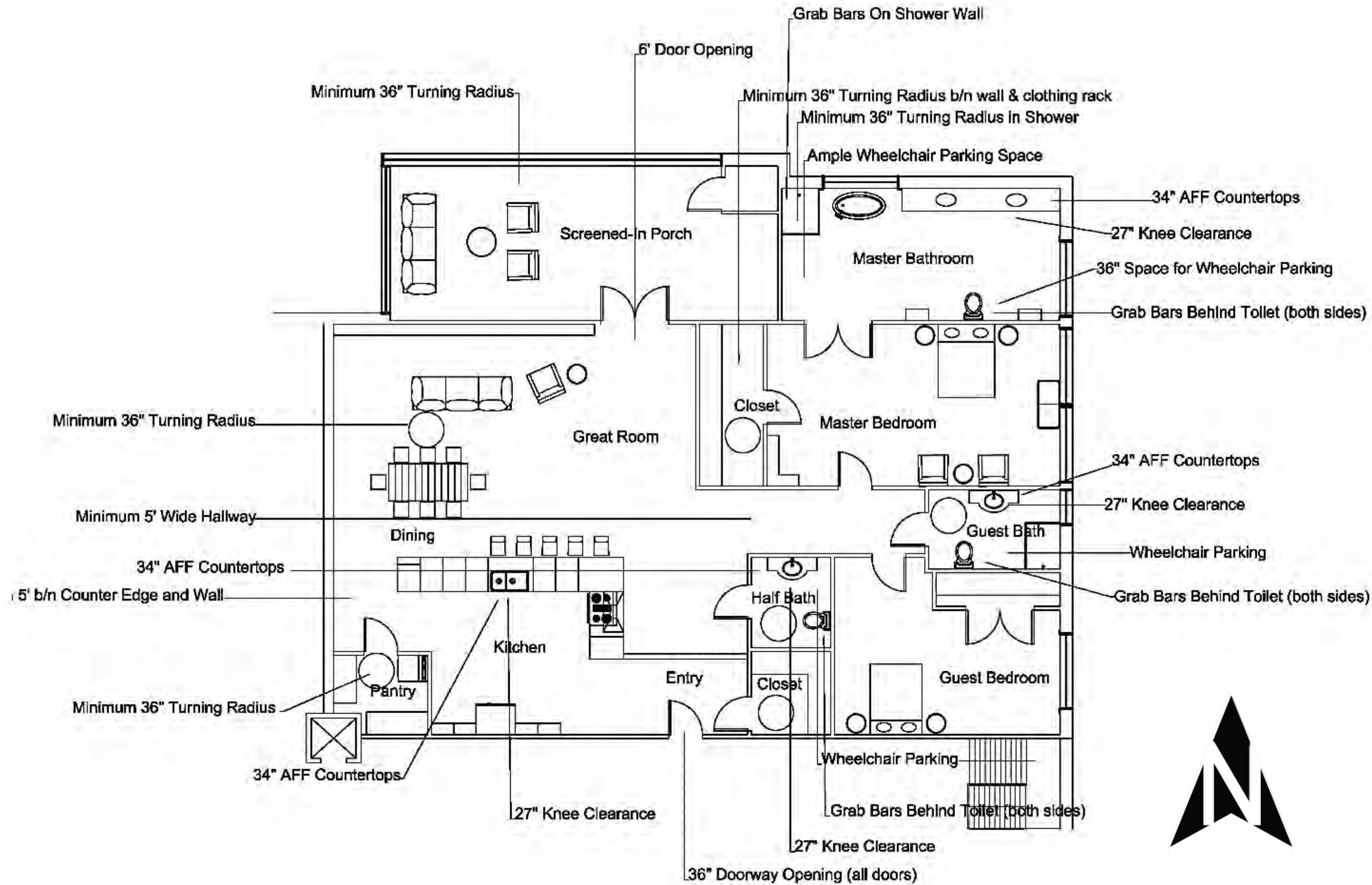


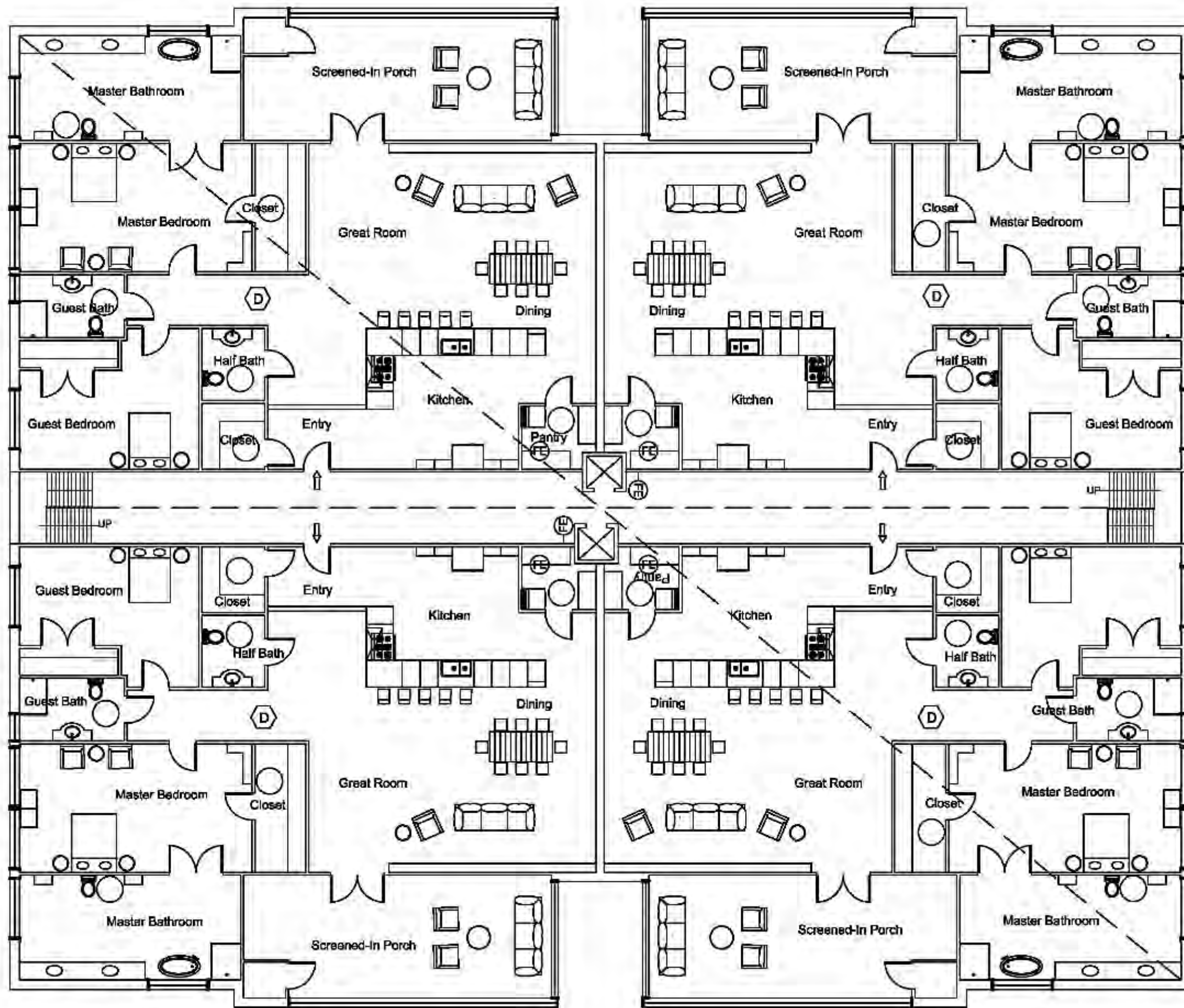
Option One



Option Two







- LEGEND**
- EXIT DISTANCE 9'-5 1/4"
 - EXIT WIDTH 96"
 - DIAGONAL DISTANCE 13'-11"
 - FE FIRE EXTINGUISHER BRACKET MOUNTED 36" AFF
 - D SMOKE DETECTOR



Building Construction and Occupancy									
Construction Type		Sprinklers?		Occupancy Type					
Type 2		YES		R2					
Exit Requirements: Number and Arrangement of Exits									
Space Designation	# of Exits		Travel Distance		Arrangement: Means of Egress				
	Required	Shown on Plans	Allowable Distance	Actual Distance Shown on Plans	Req'd Distance Between Exits		Actual Distance Shown on Plans		
Apartment 201	2	2	250 ft	9'-5 1/4"	79'		96"		
Notes:									
Use Group or Space Designation	(A)	(B)	Calculated Occupant Load = A/B	©		Exit Width (Inches)			
	Area = Sq. Ft.	Area per Occupant		Egress per Occupant		Required Width = (A/B)xC		Actual Width	
				Stair	Level	Stair	Level	Stair	Level
Apartment 201	2,240	200	11.2	0.3	0.2	3.36	2.24	4'	8'