

PORTFOLIO 2

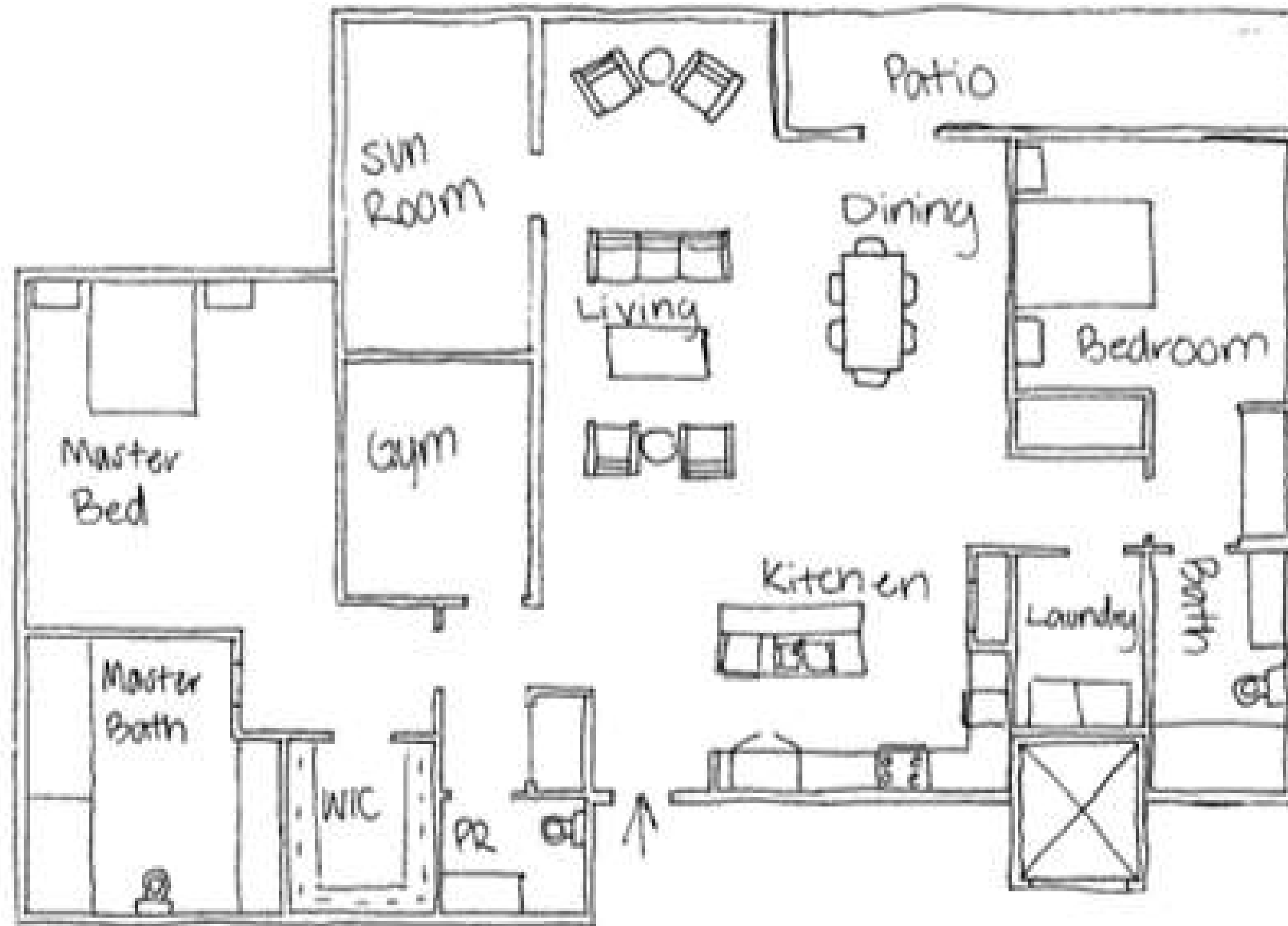
Preliminary Schematics

Paige Stark

IDSN 3102

Fall 2019

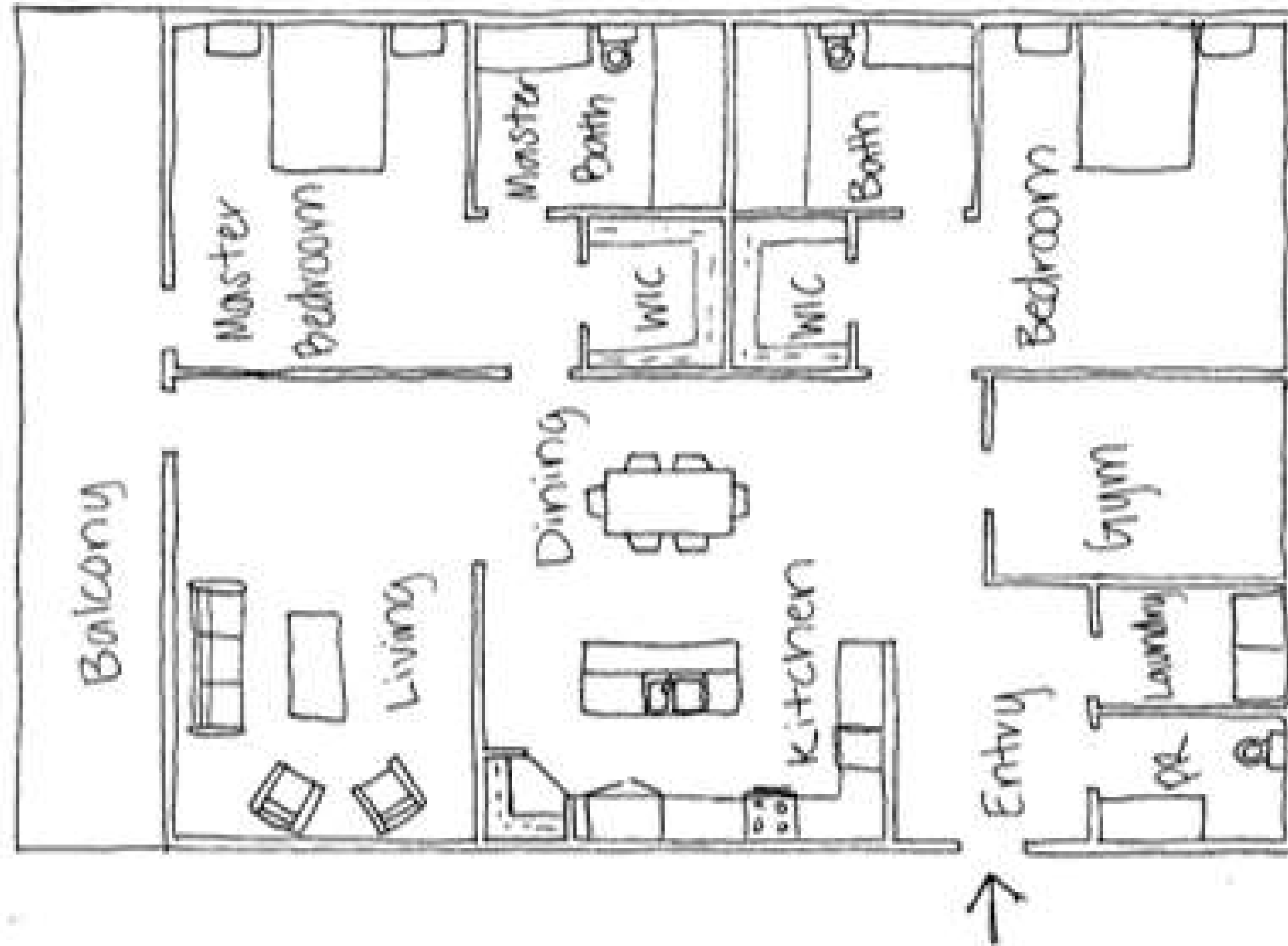
SPACE PLANNING



Space Plan Sketch #1

Not to scale

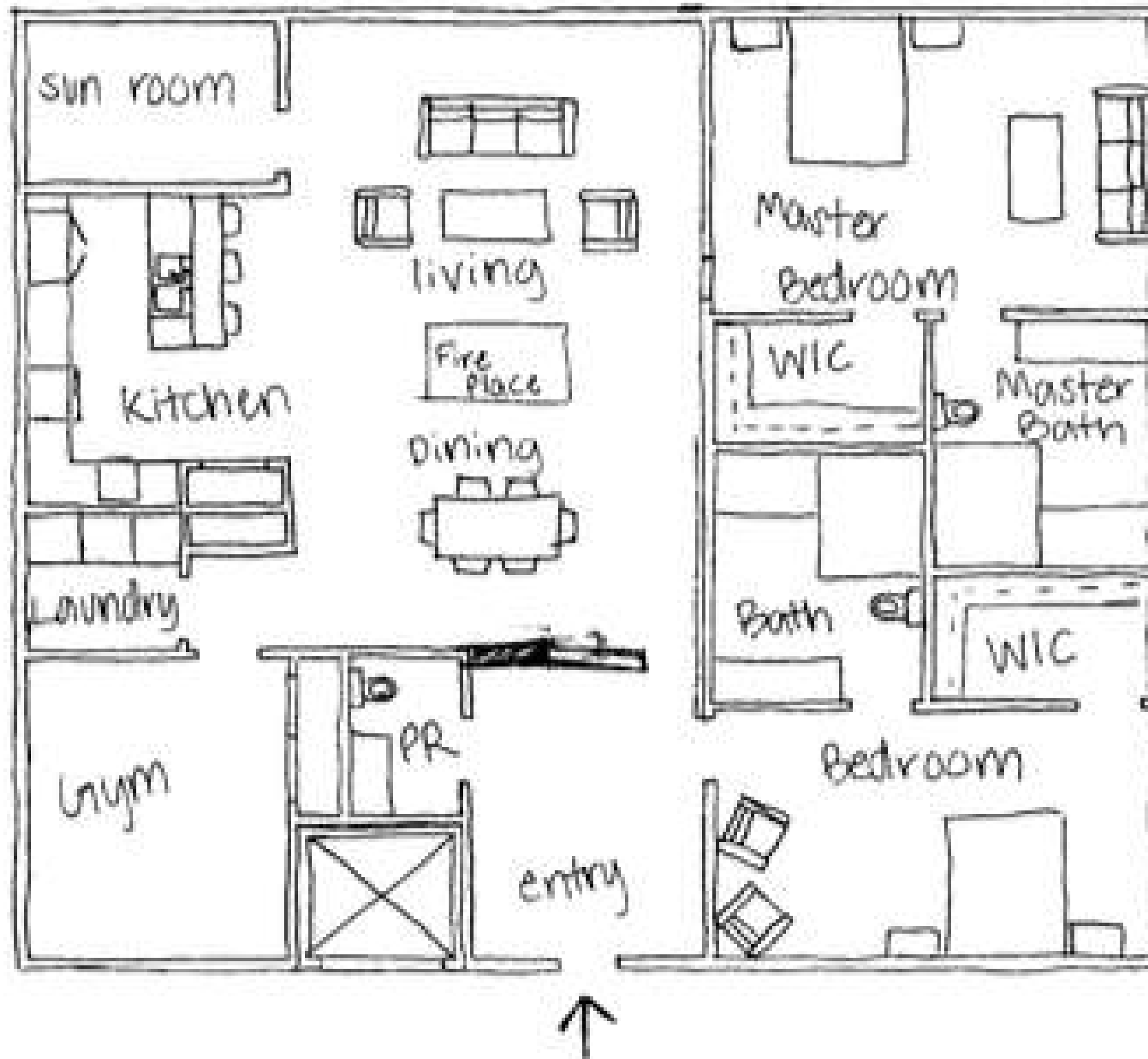
SPACE PLANNING



Space Plan Sketch #2

Not to scale

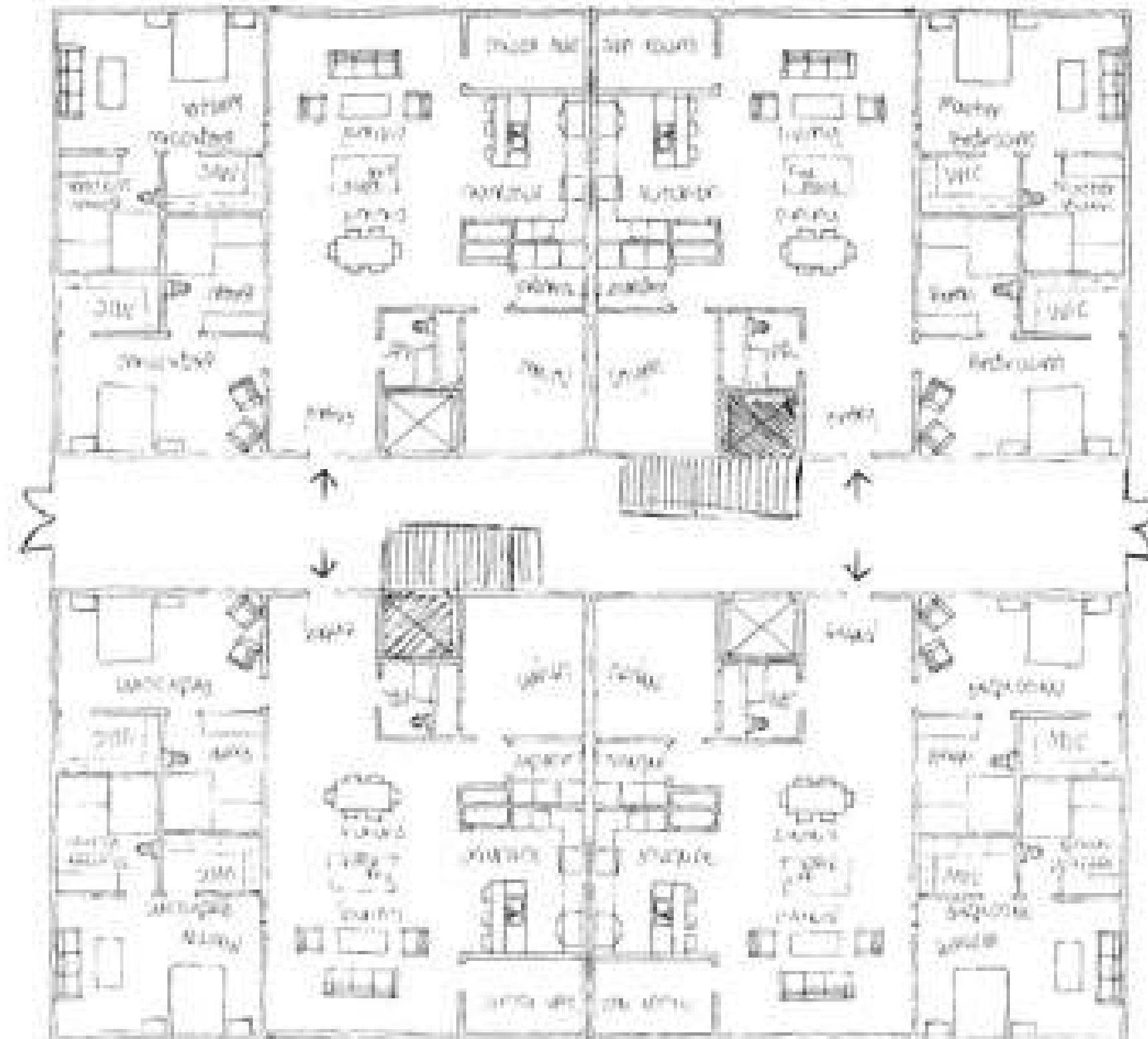
SPACE PLANNING



Space Plan Sketch #3

Not to scale

SPACE PLANNING

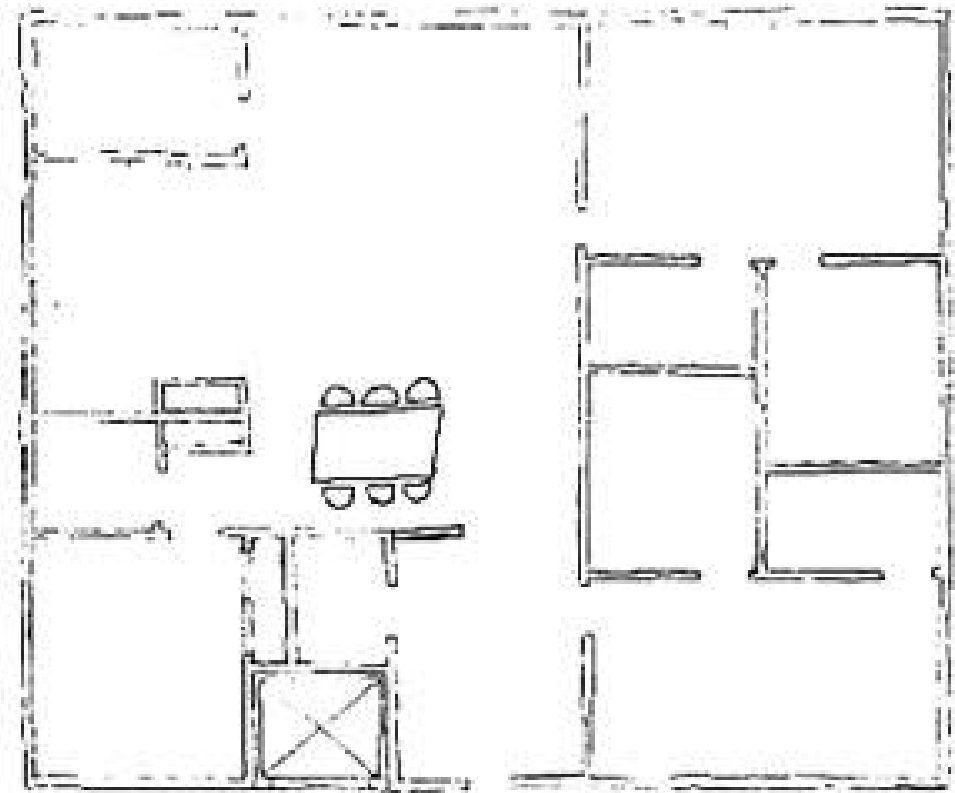


Space Plan Sketch #3

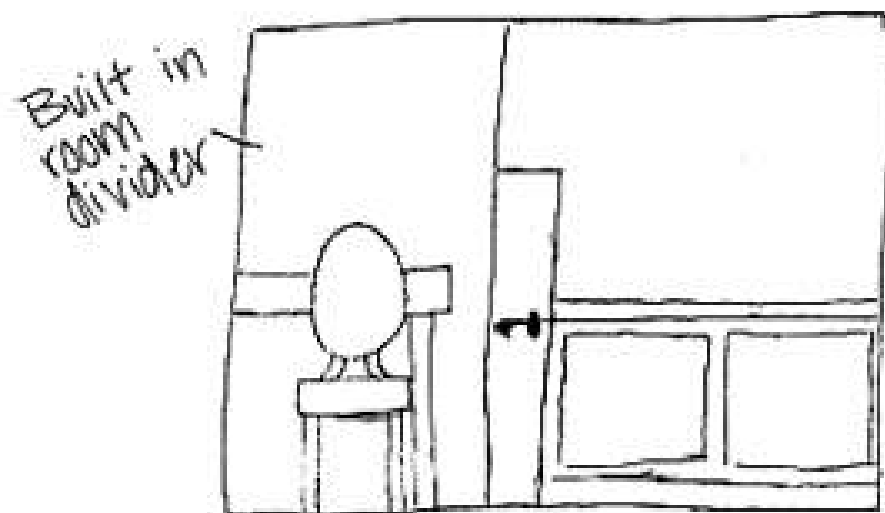
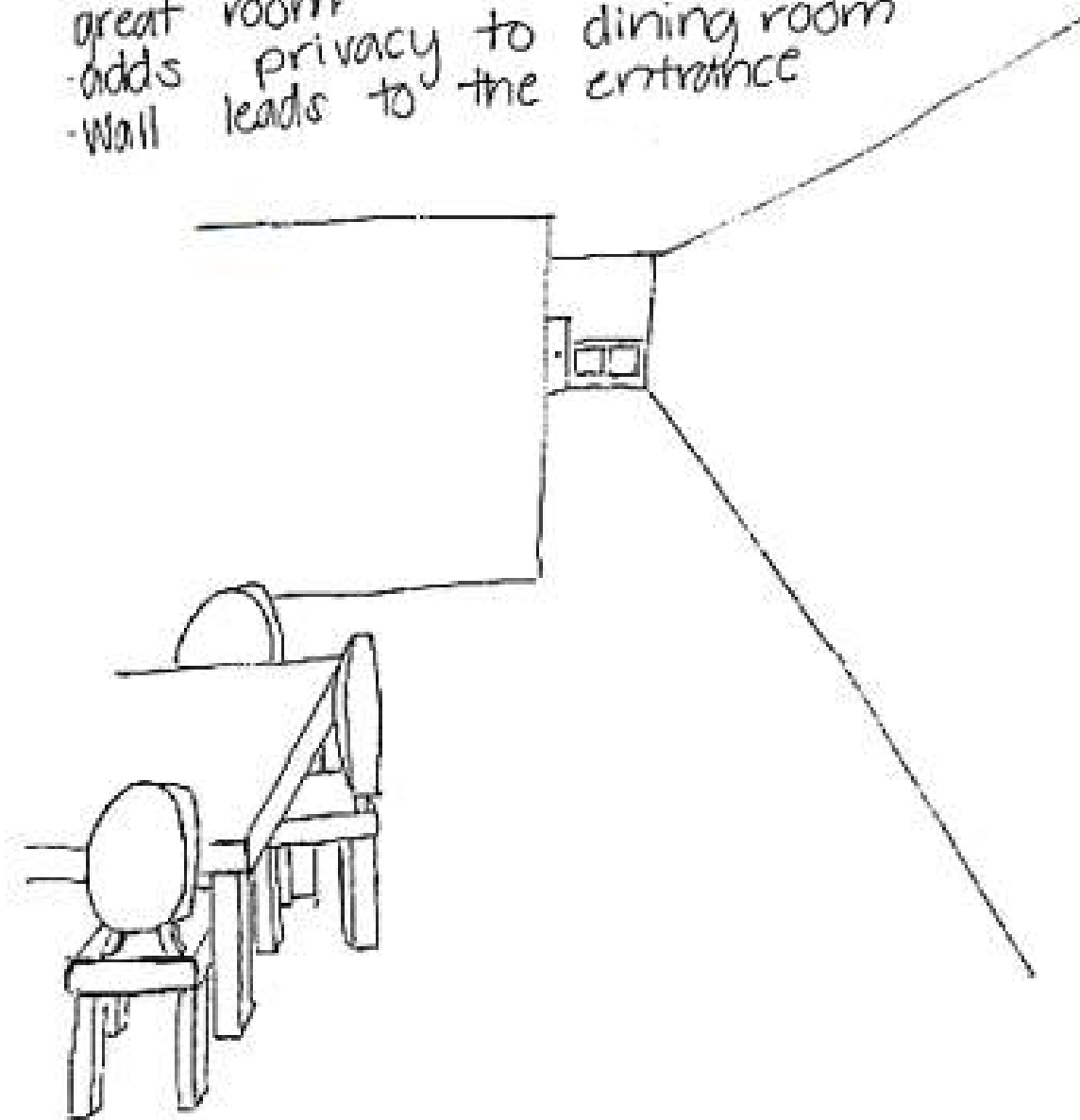
Full Layout

Not to scale

PROBLEM RESOLUTION



- extended wall separates the entry way from the great room
- adds privacy to dining room
- wall leads to the entrance



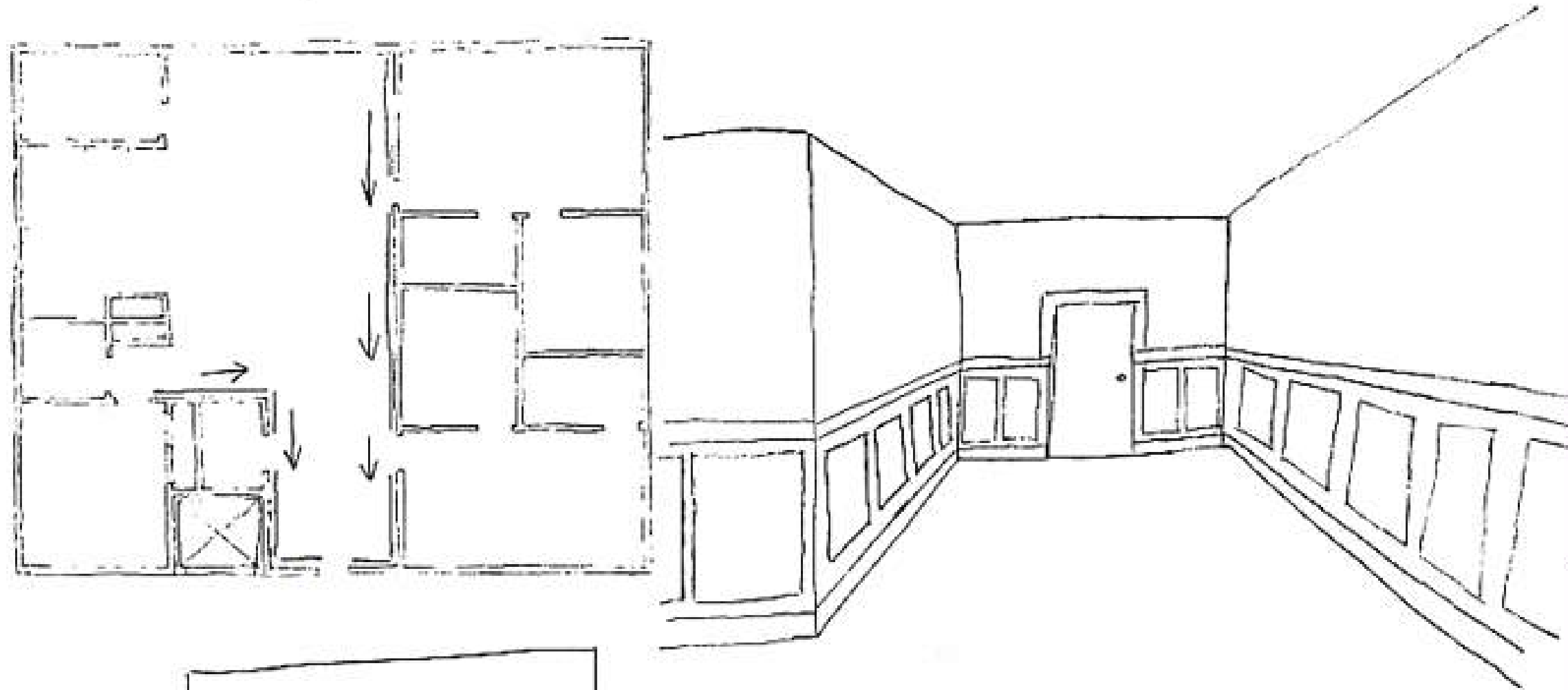
Built in room divider

Problem Resolution
Sketch

Wayfinding #1

Not to scale

PROBLEM RESOLUTION



Wainscoting
· On walls leading to the
entrance

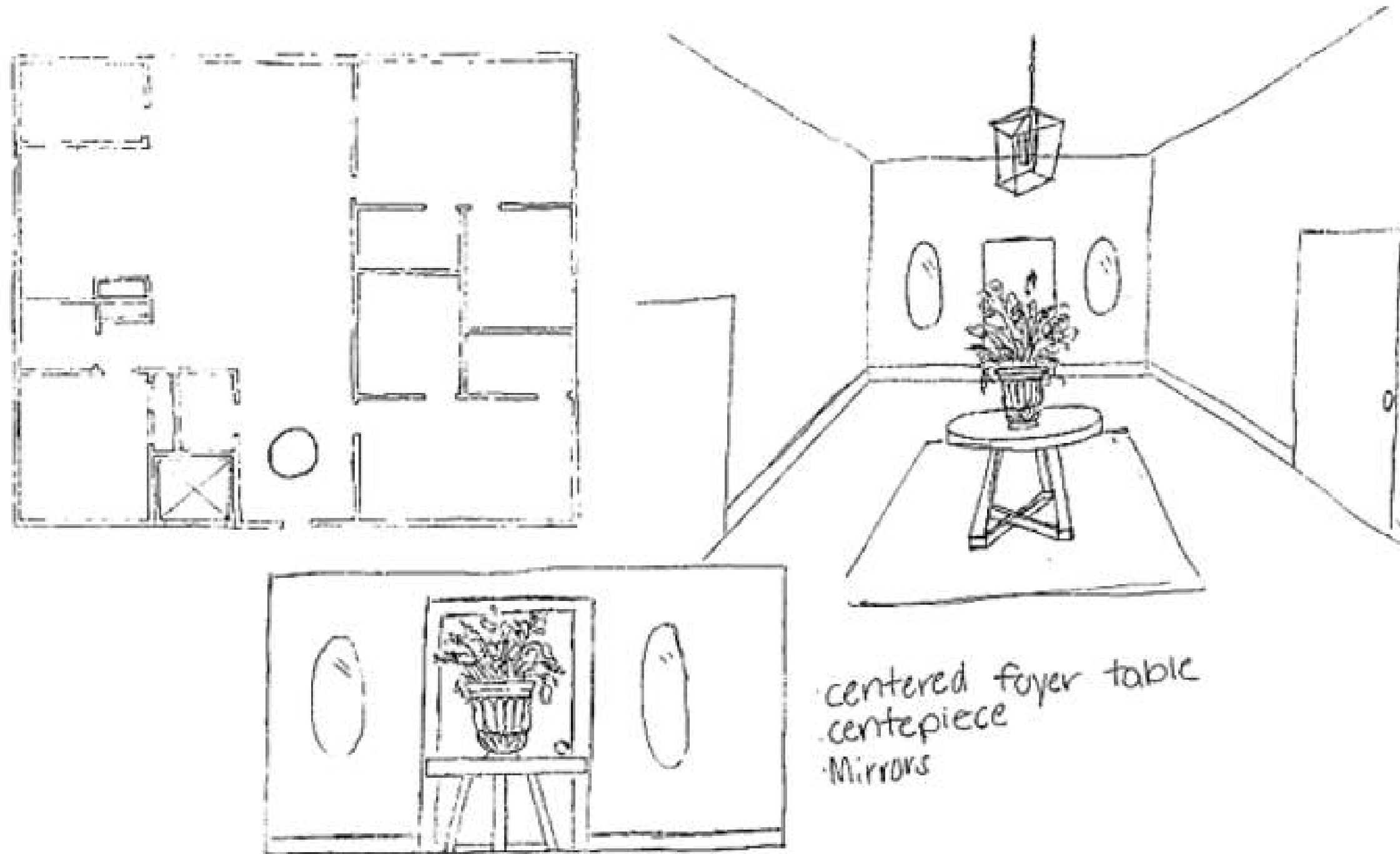
Problem Resolution

Sketch

Wayfinding #2

Not to scale

PROBLEM RESOLUTION



centered foyer table
centrepiece
mirrors

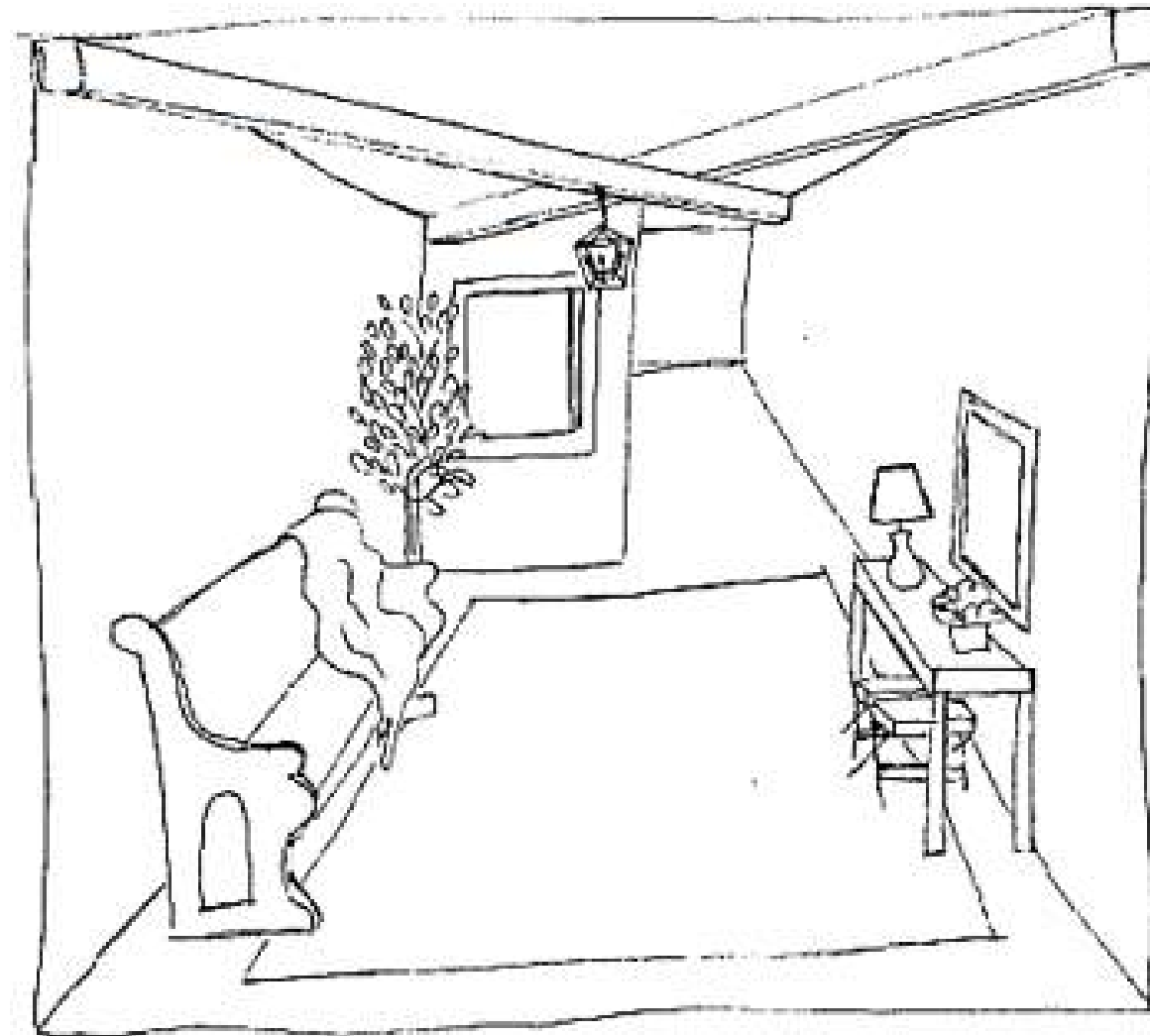
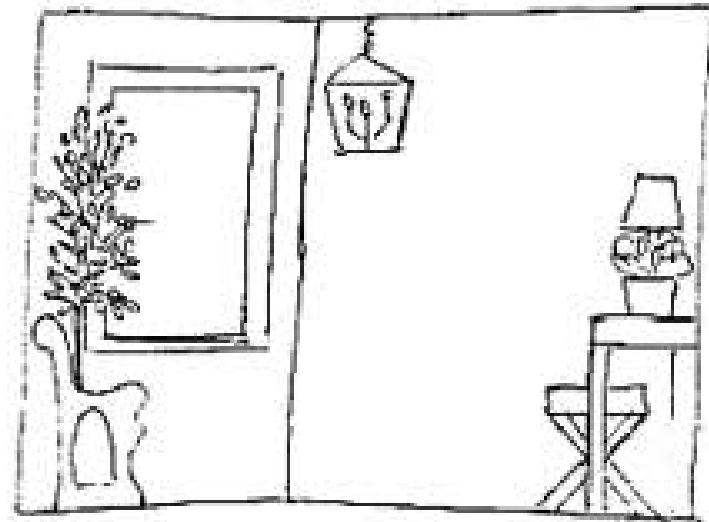
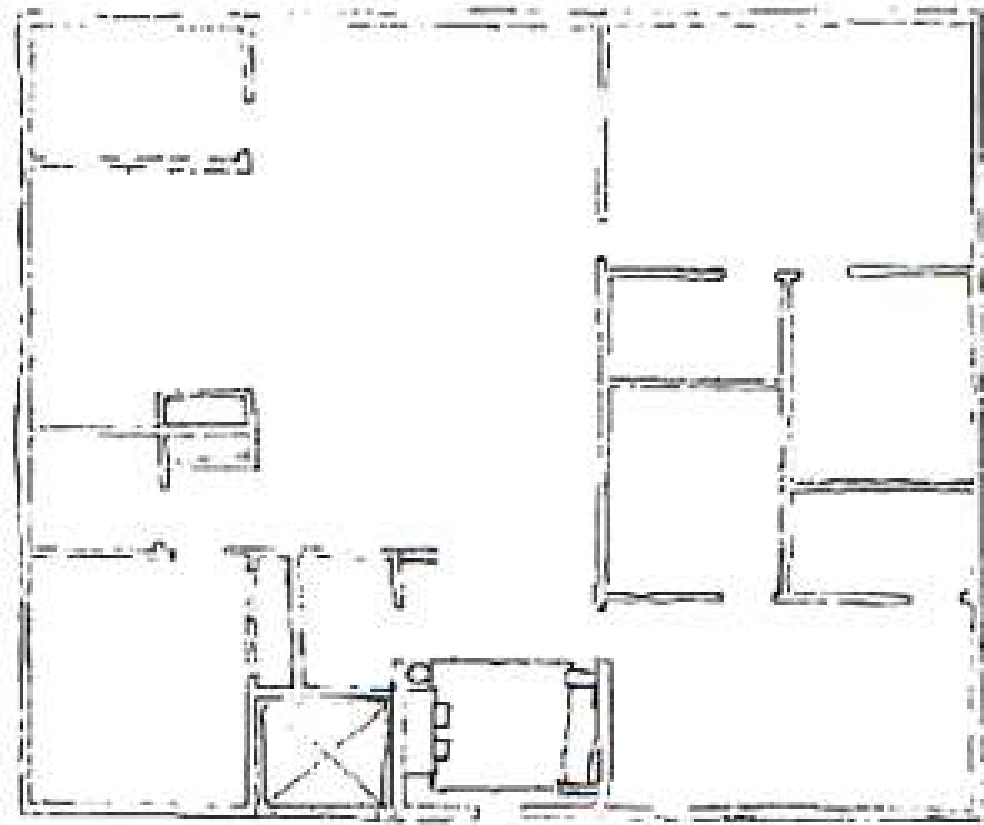
Problem Resolution

Sketch

Entry #1

Not to scale

PROBLEM RESOLUTION



- church pew
- console table w/stools
- large area rug
- Mirror

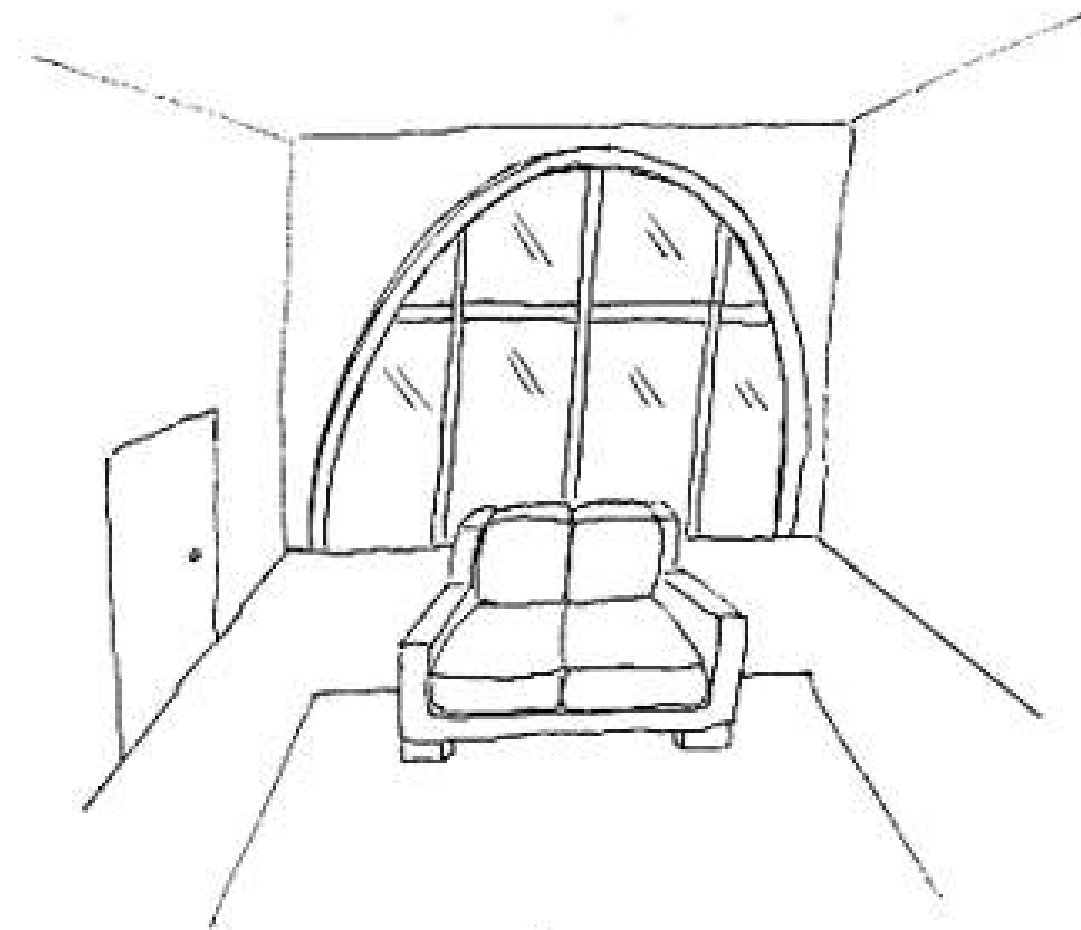
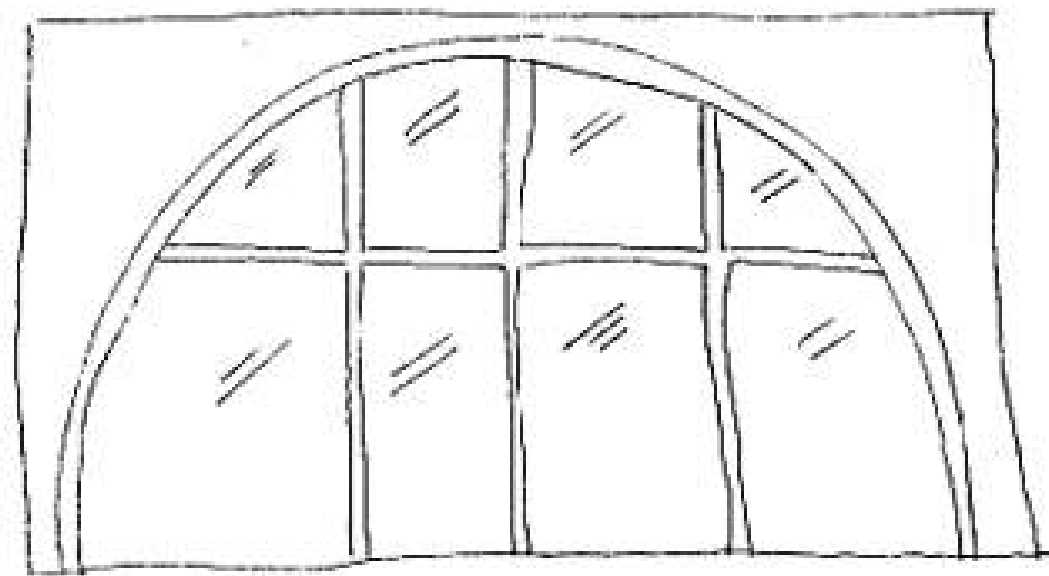
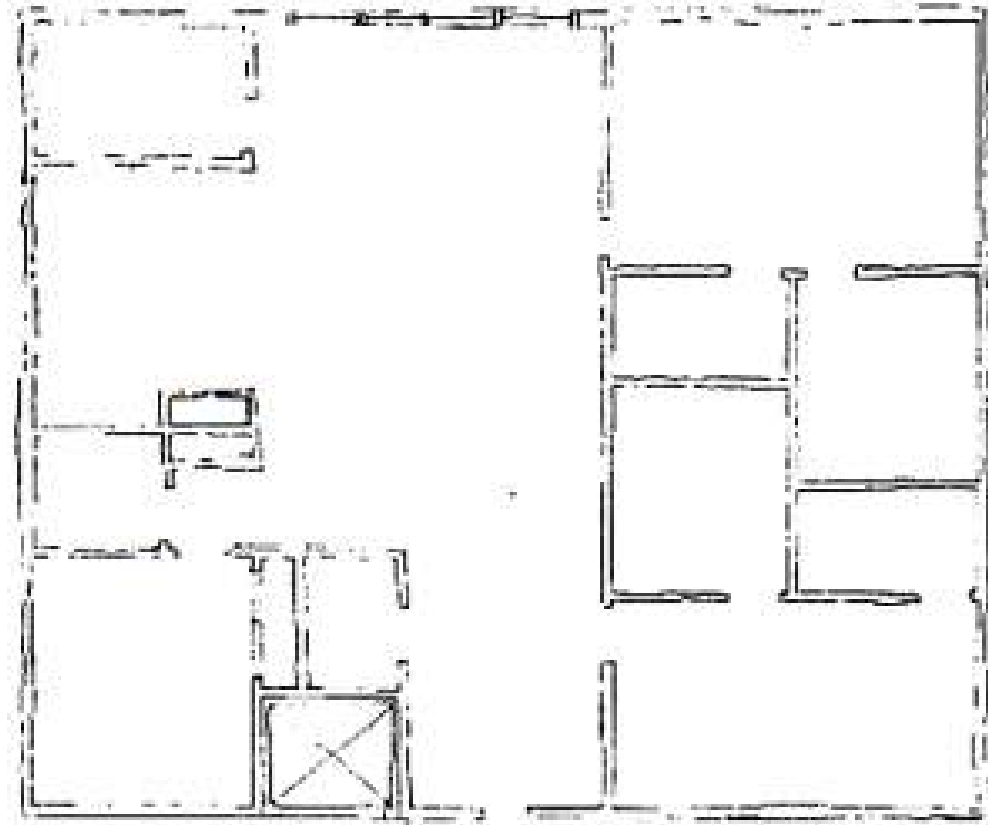
Problem Resolution

Sketch

Entry #2

Not to scale

PROBLEM RESOLUTION



- Arched window
- full wall coverage
- ~~can~~ brings daylight throughout the whole space

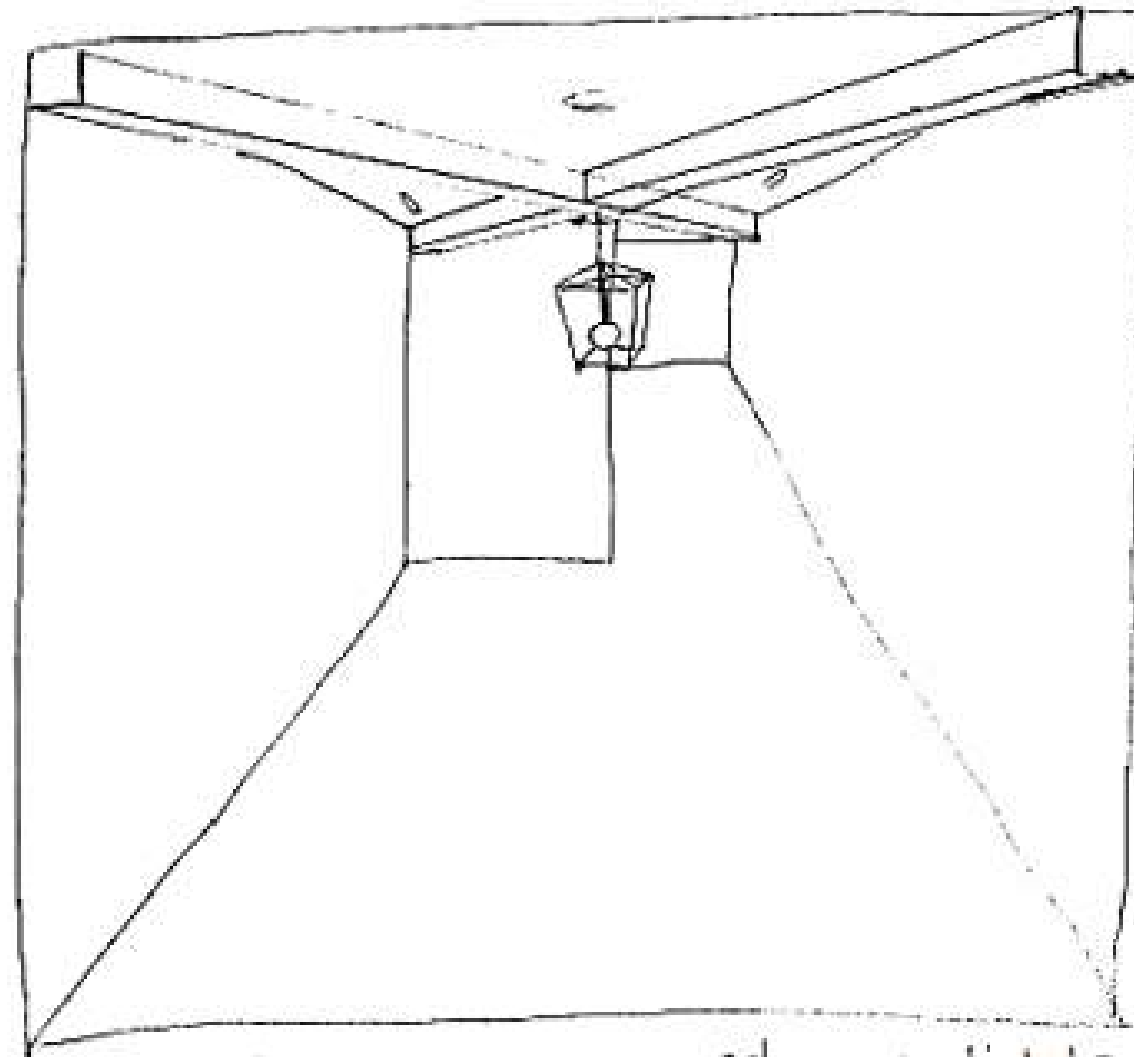
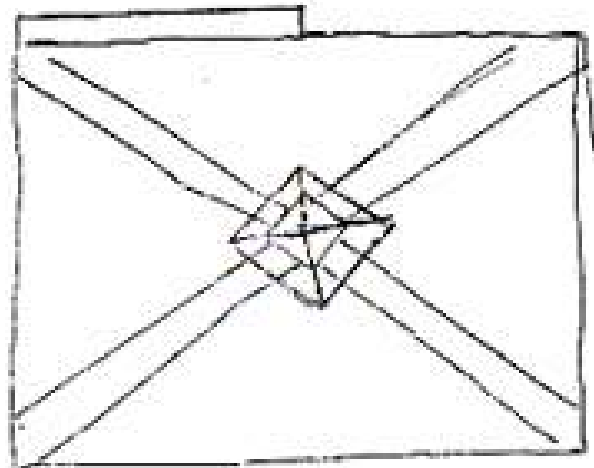
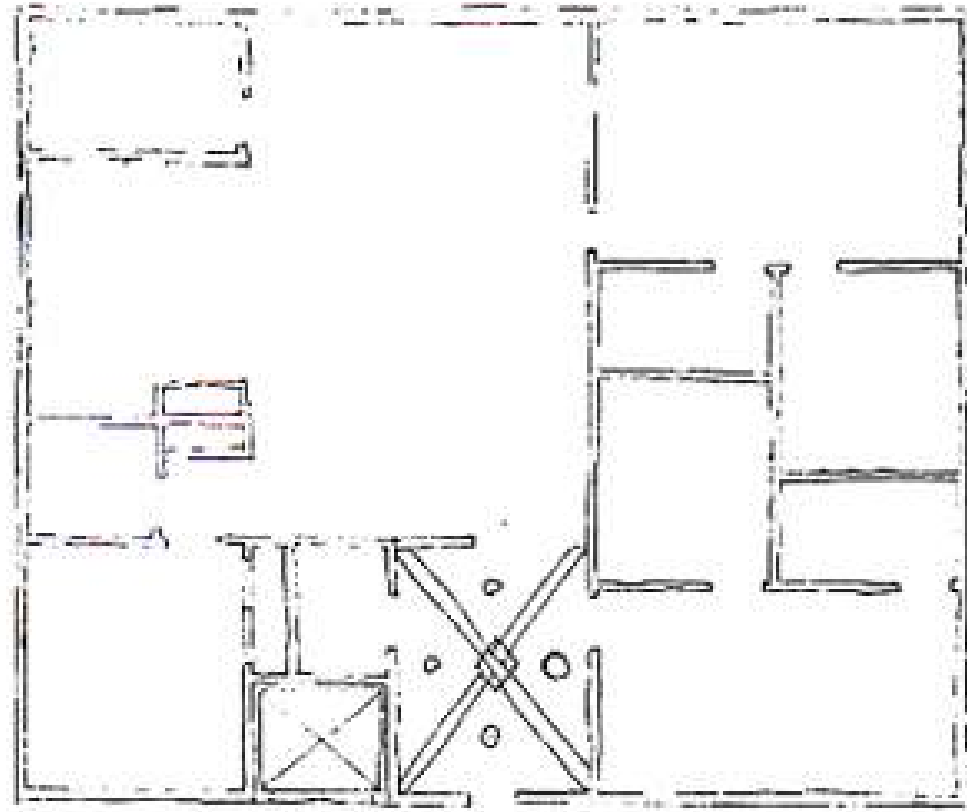
Problem Resolution

Sketch

Ceiling/ Daylighting #1

Not to scale

PROBLEM RESOLUTION



- dimable lights
- wooden beams
- 10' tall ceiling
- pendant light

-recessed can lights

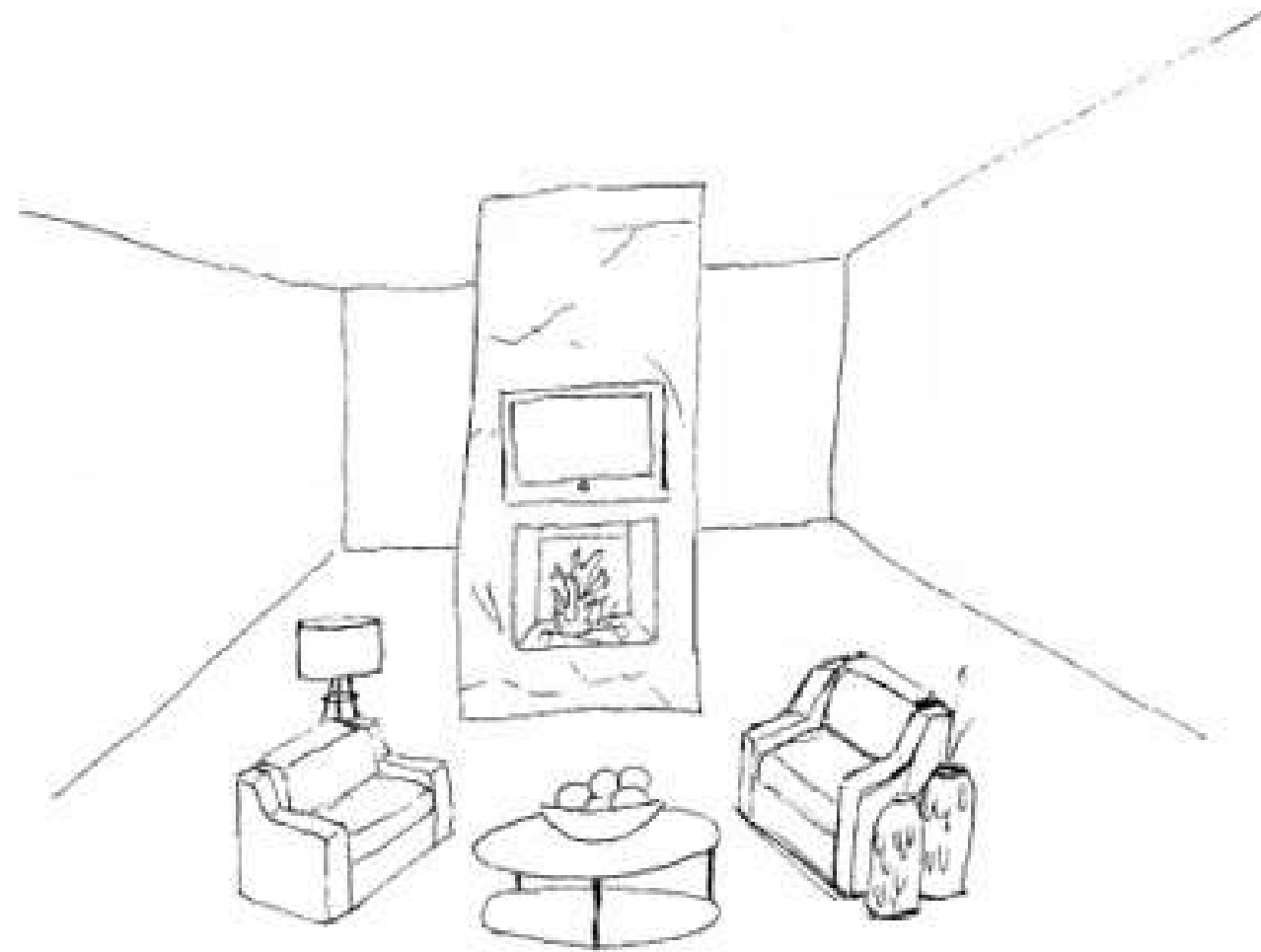
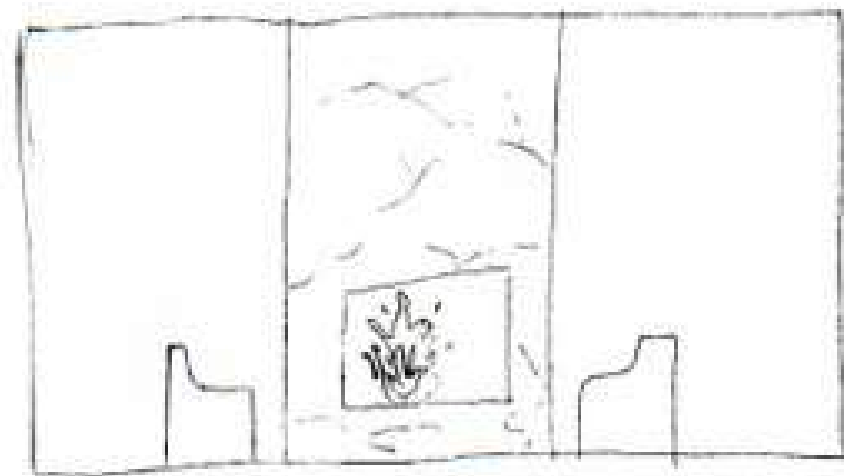
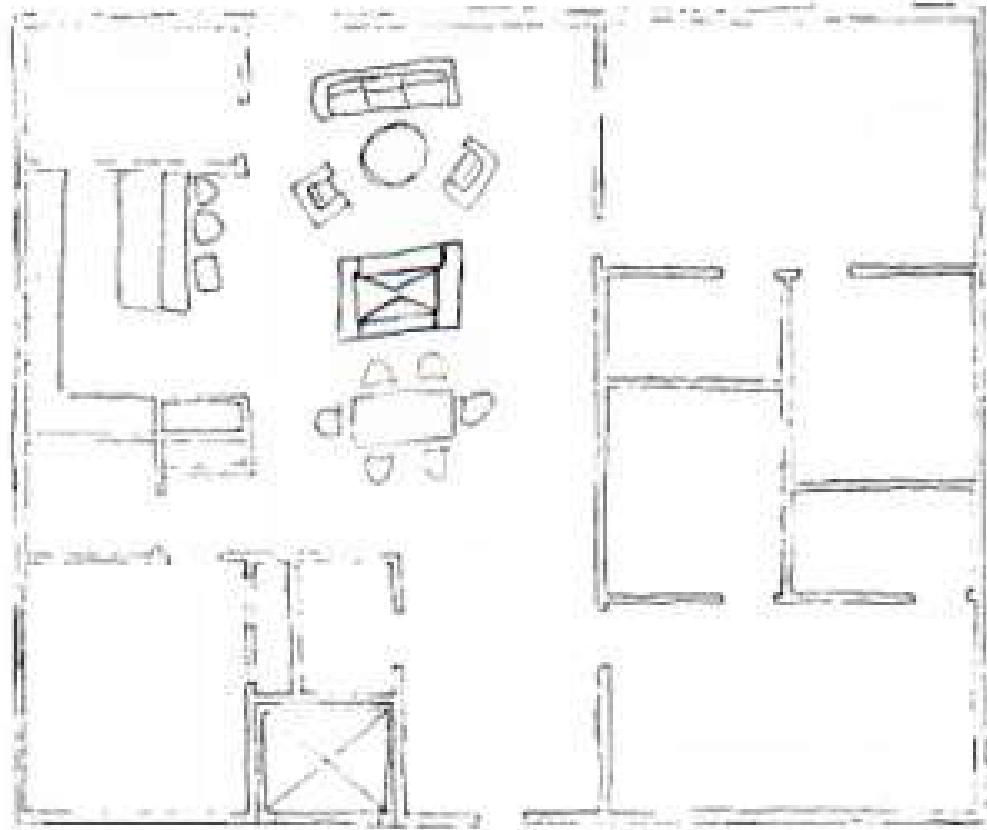
Problem Resolution

Sketch

Ceiling/ Daylighting #2

Not to scale

PROBLEM RESOLUTION



- Floor to ceiling fireplace
- Mounted TV
- divides kitchen/living/dining room
- Marbled

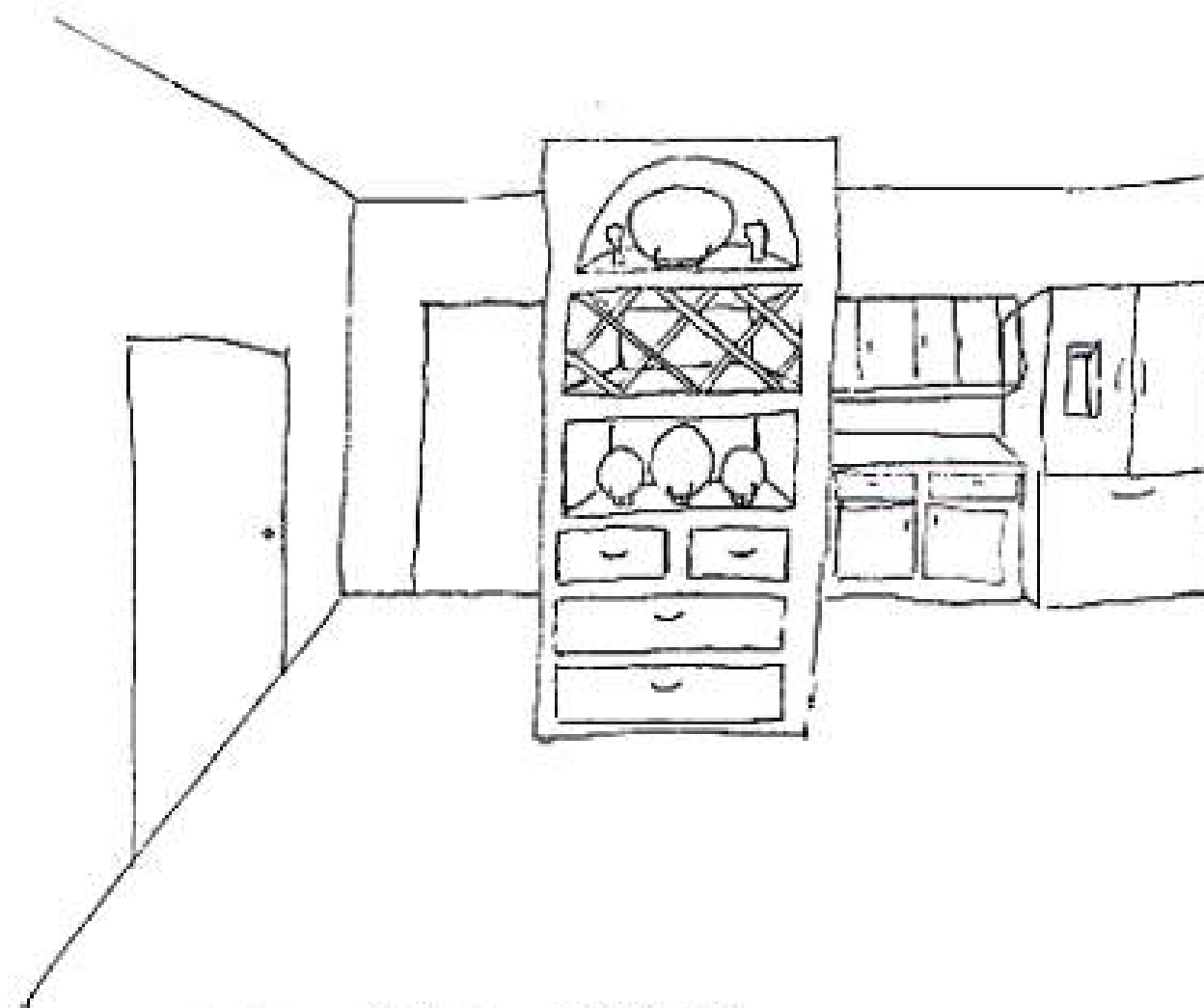
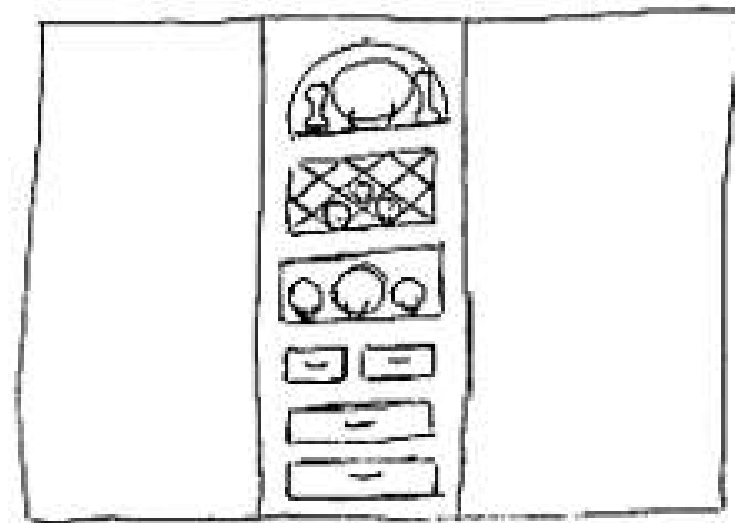
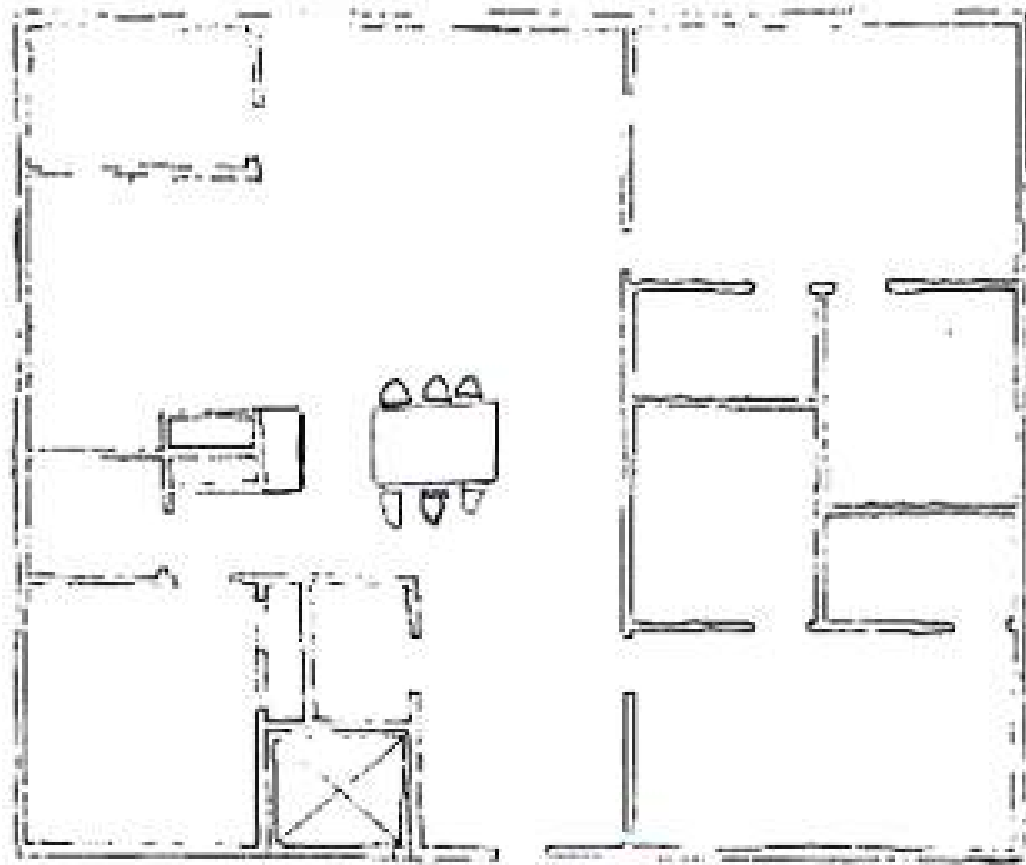
Problem Resolution

Sketch

Support Space #1

Not to scale

PROBLEM RESOLUTION



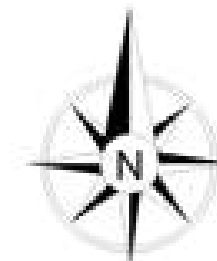
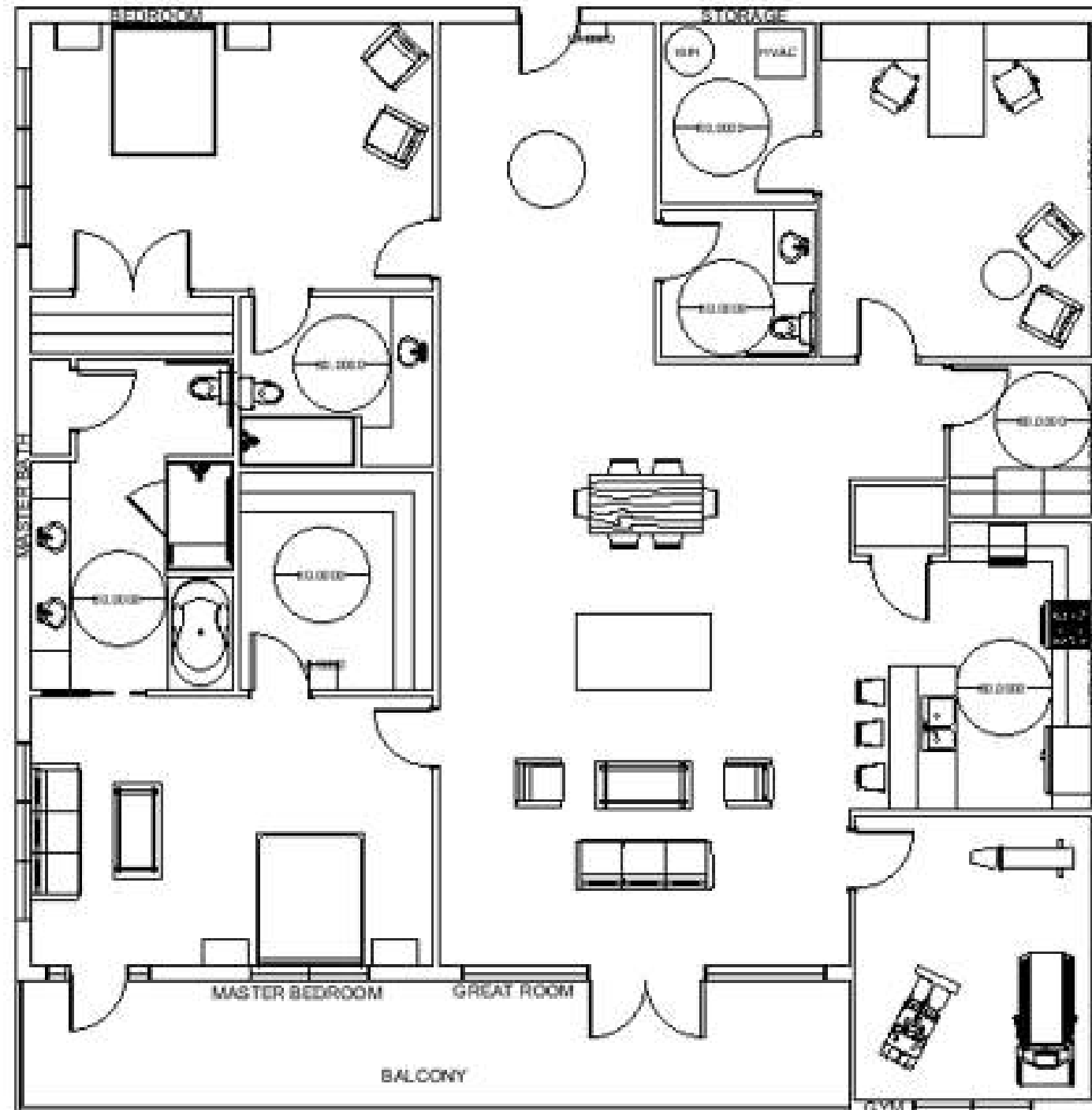
- built in china cabinet
- built in wine rack
- Storage
- stick

Problem Resolution
Sketch

Support Space #2

Not to scale

FURNITURE PLAN



Furniture Plan
Scale: 1/8"=1'-0"

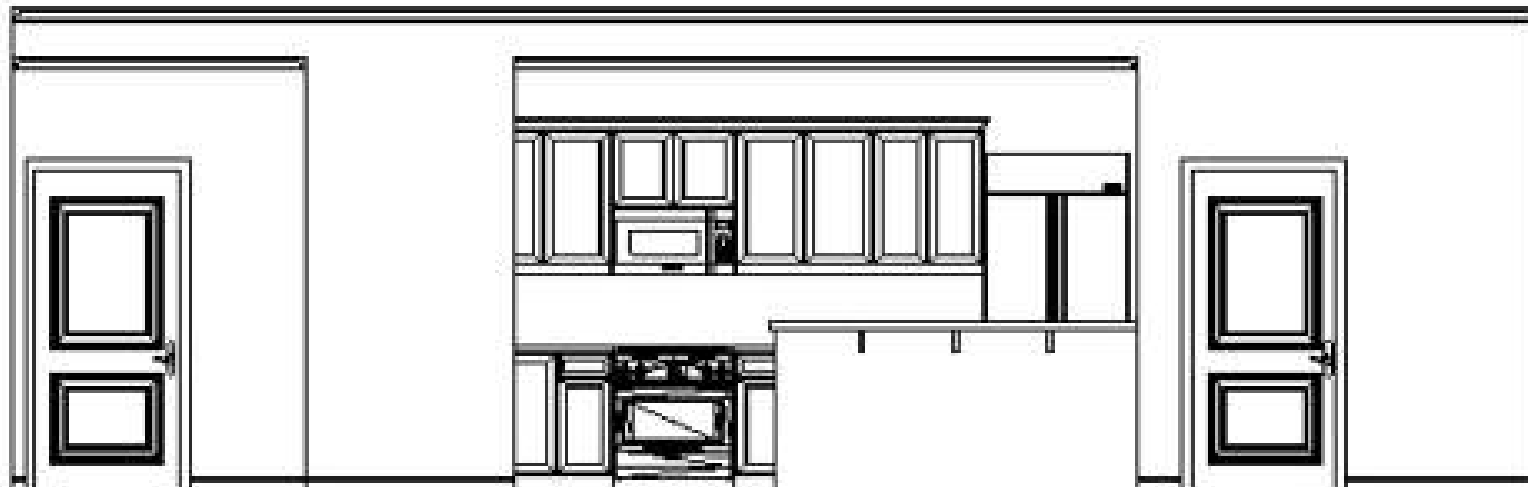
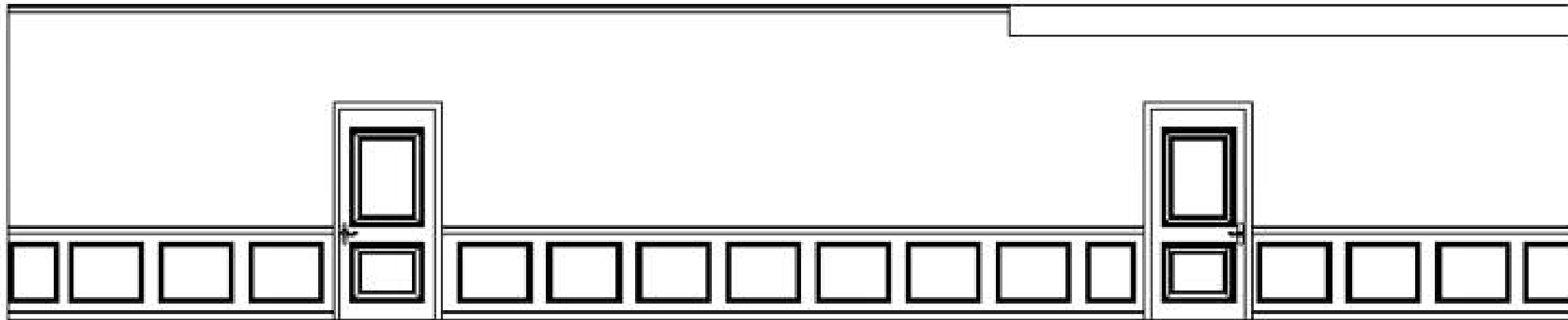
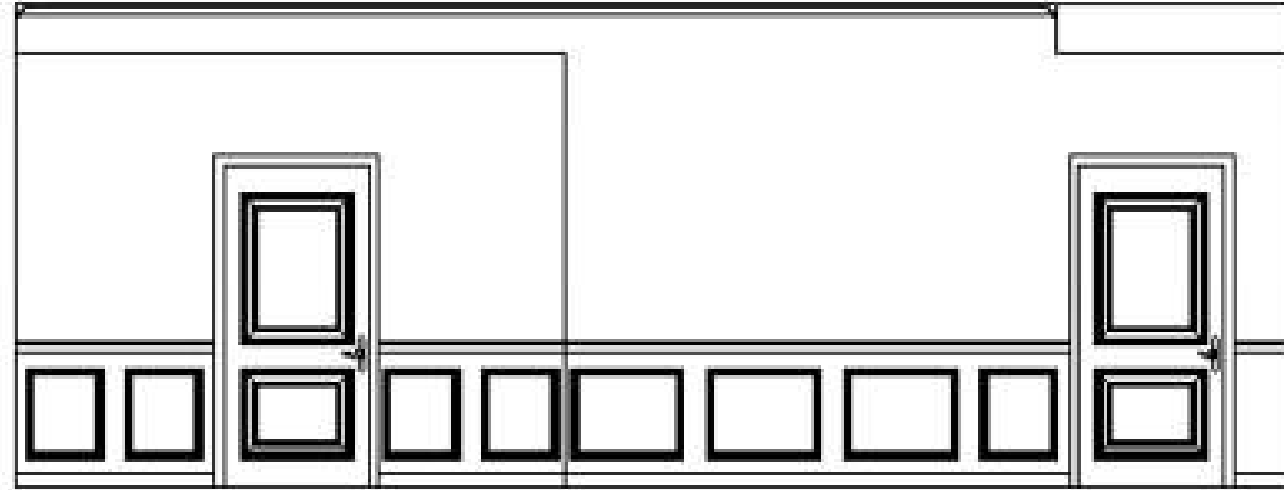
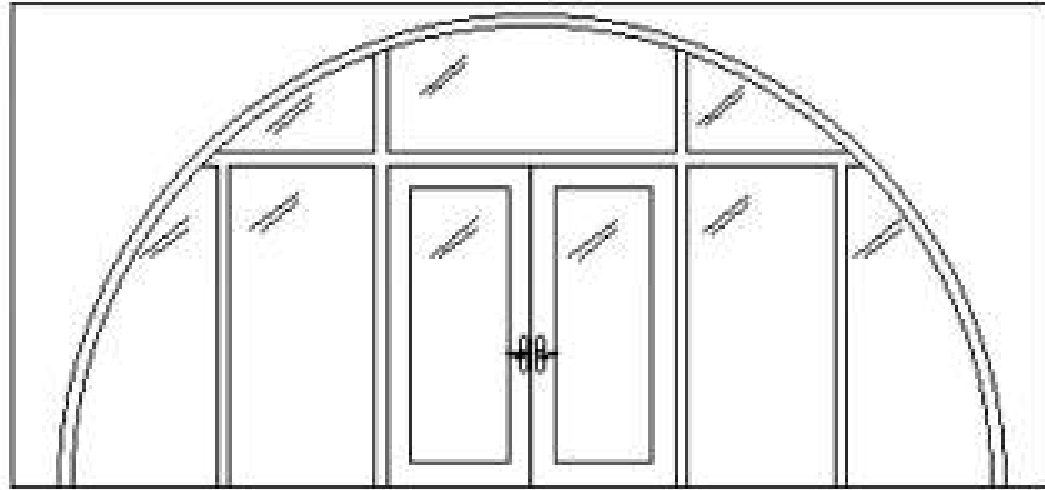
ROOM ELEVATIONS



Kitchen Elevations

Scale: 1/4"=1'-0"

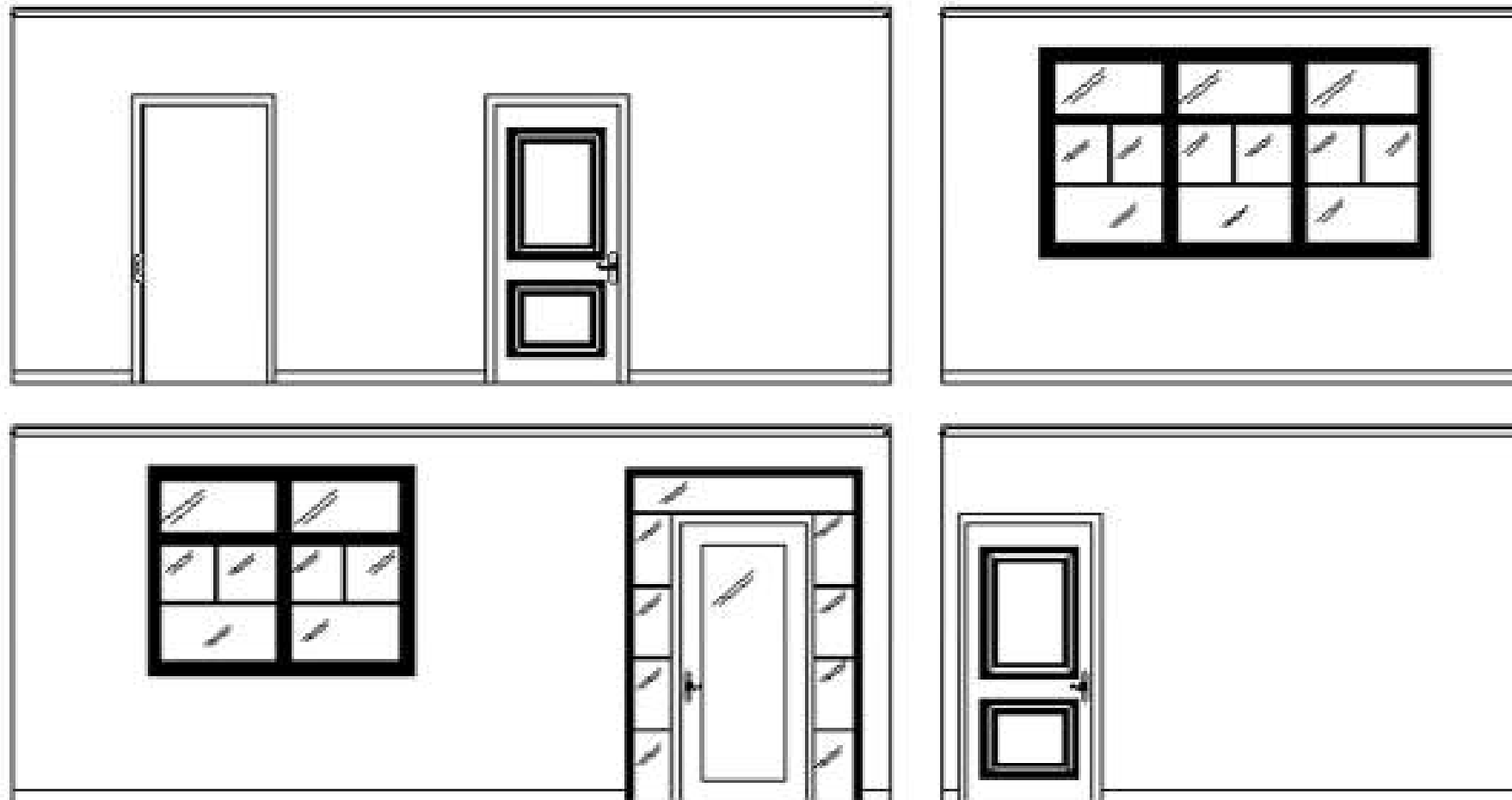
ROOM ELEVATIONS



Great Room
Elevations

Scale: 1/4"=1'-0"

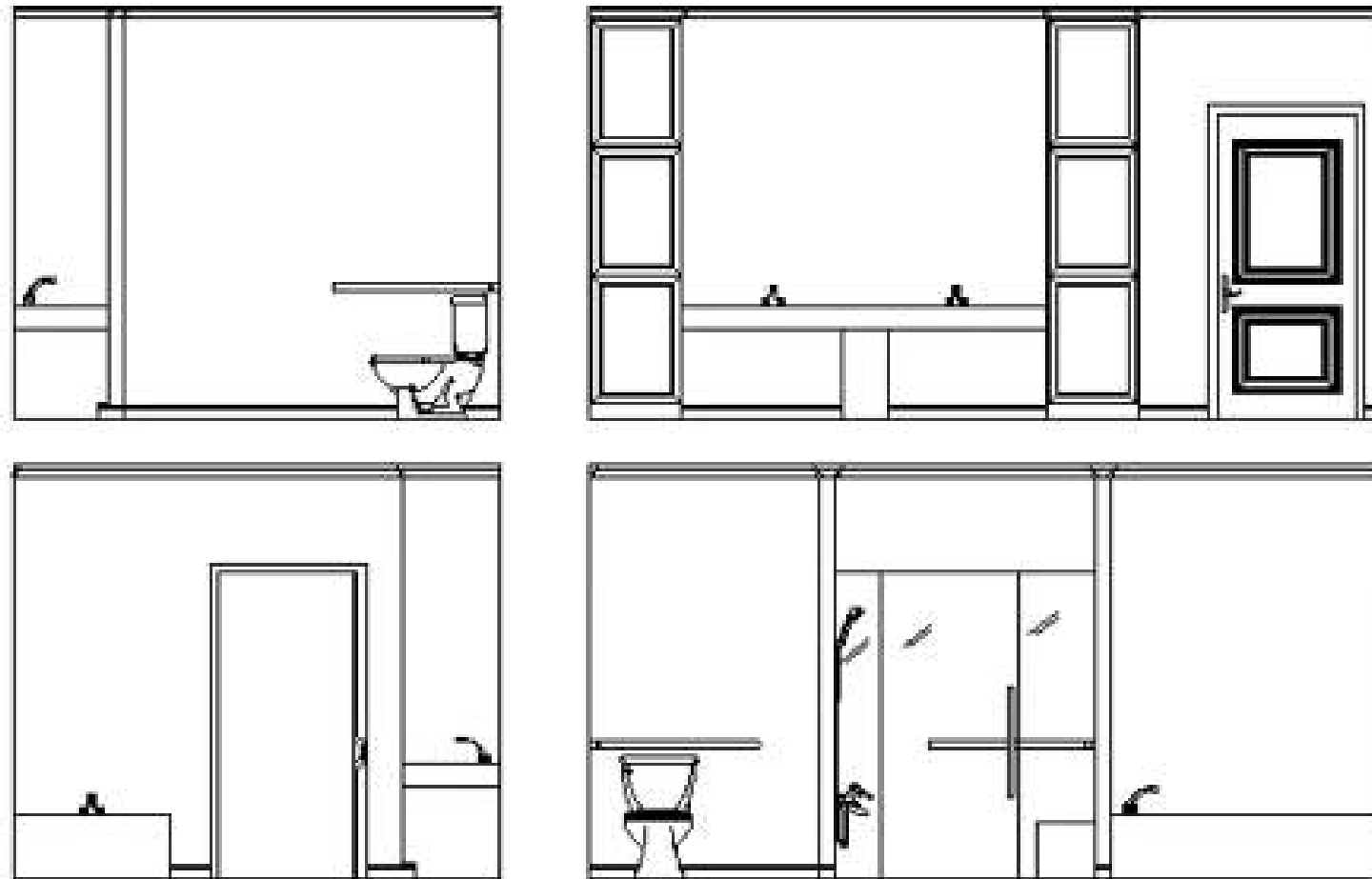
ROOM ELEVATIONS



**Master Bedroom
Elevations**

Scale: 1/4"=1'-0"

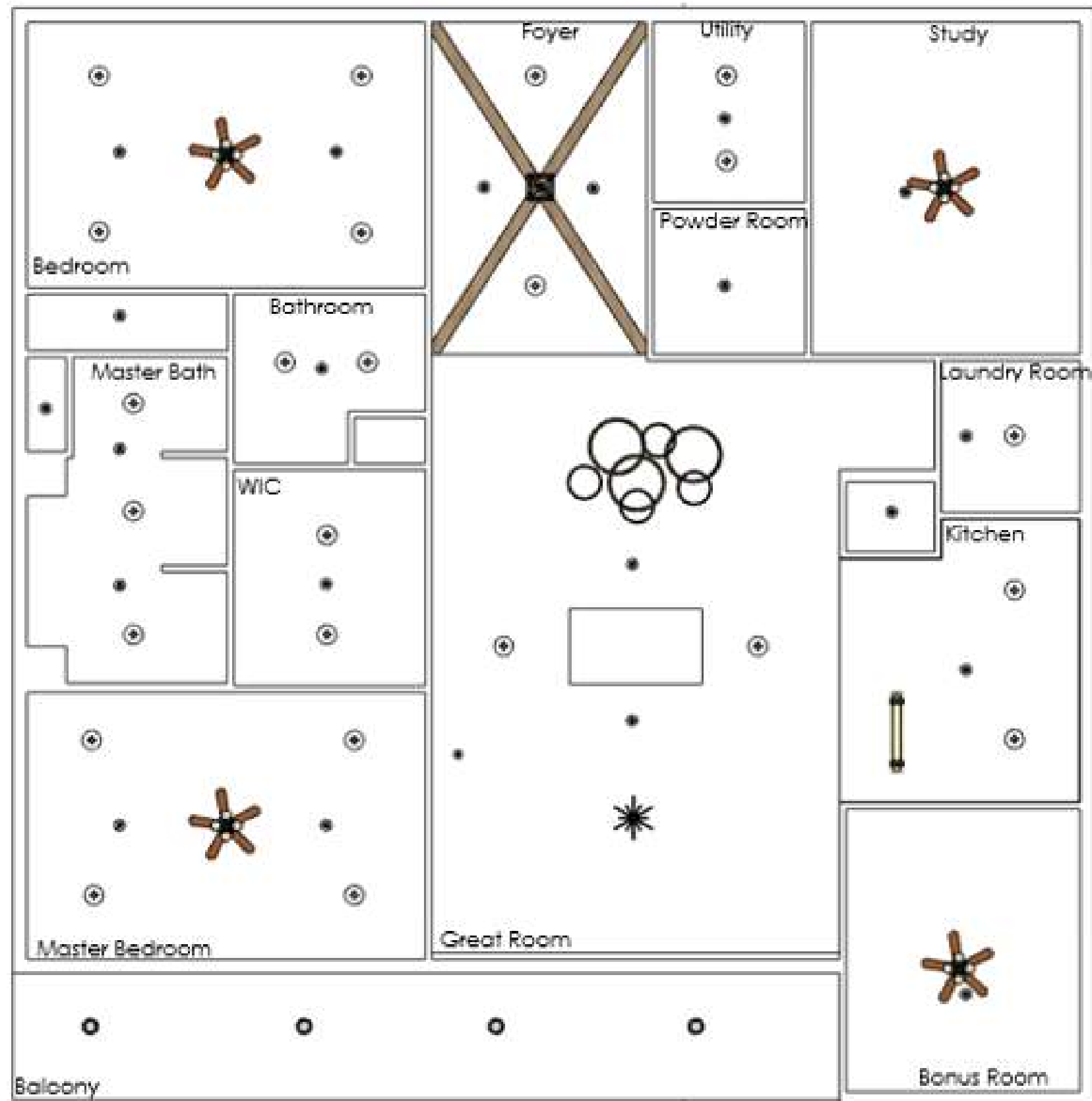
ROOM ELEVATIONS



**Master Bathroom
Elevations**

Scale: 1/4"=1'-0"

REFLECTED CEILING PLAN



Reflected Ceiling Plan

Common Ceiling Height:

9'

Great Room Ceiling
Height: 11"

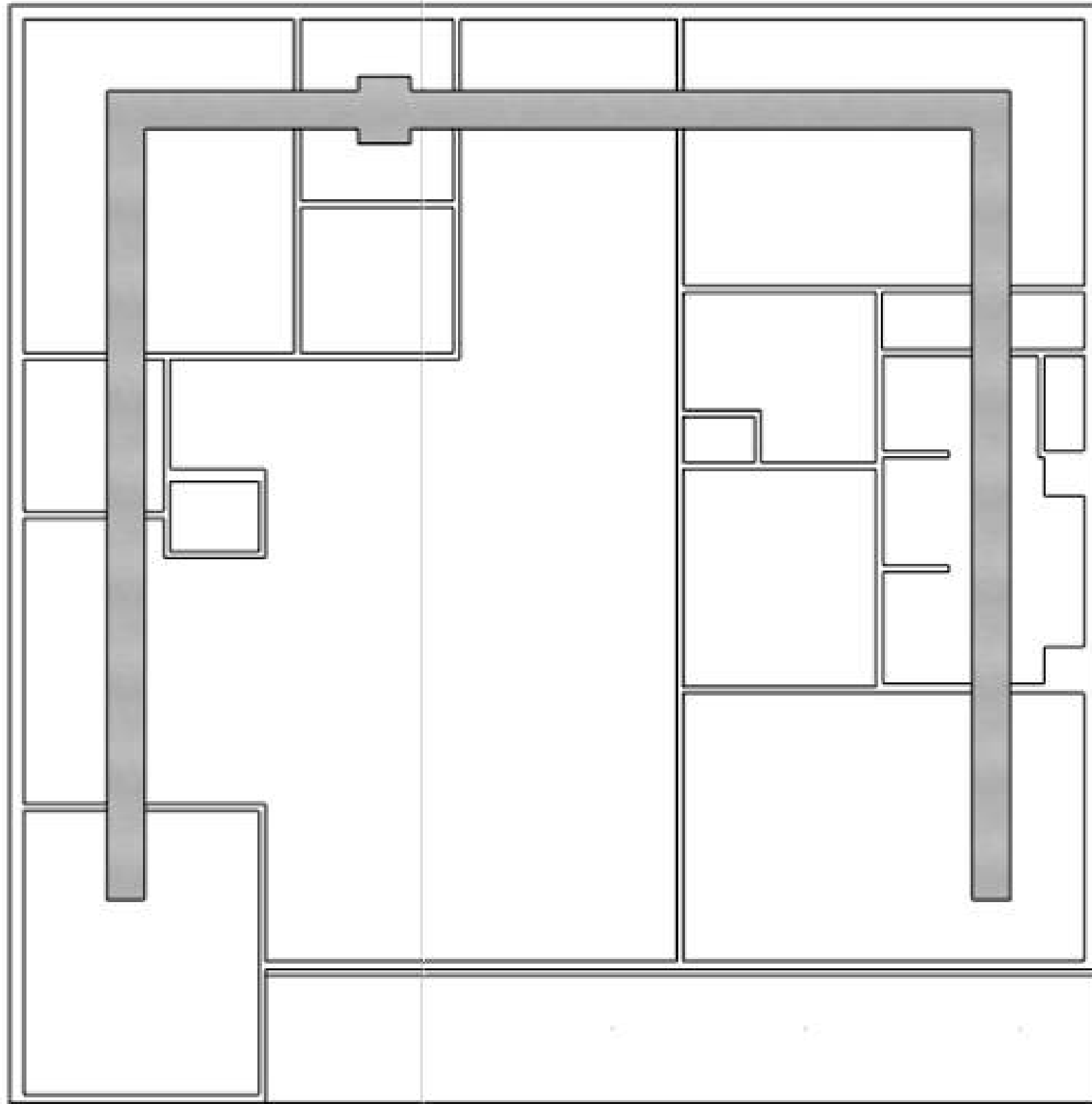
Smoke Alarm: 1 outside
each Bedroom

Sprinklers: 1 in each room,
1 every 15'

Lighting: pendant lights,
and dimmable recessed
lights

Not to Scale

REFLECTED CEILING PLAN



Reflected Ceiling Plan

Ductwork

Not to Scale

PERSPECTIVE



Great Room

PERSPECTIVE



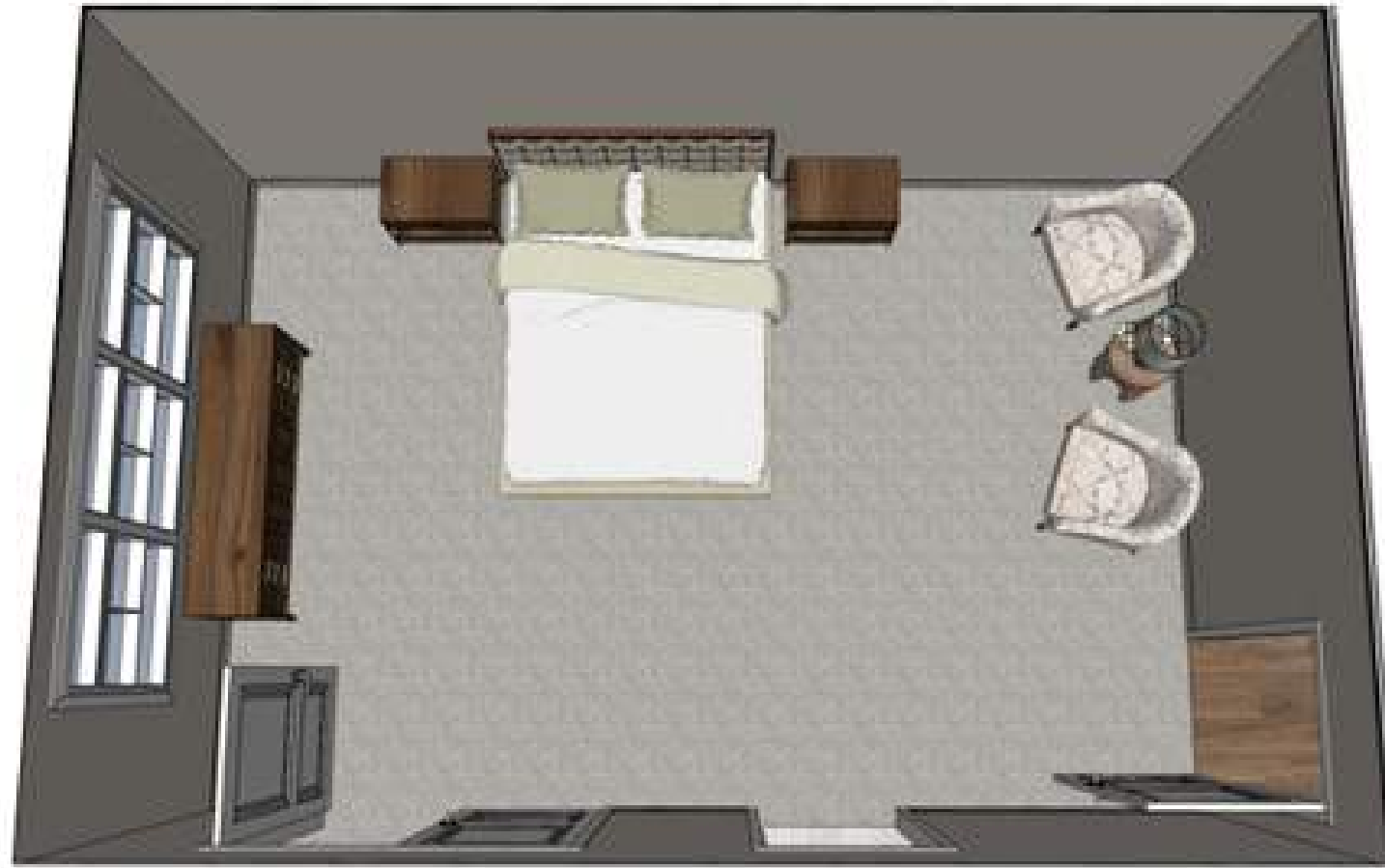
Kitchen

PERSPECTIVE



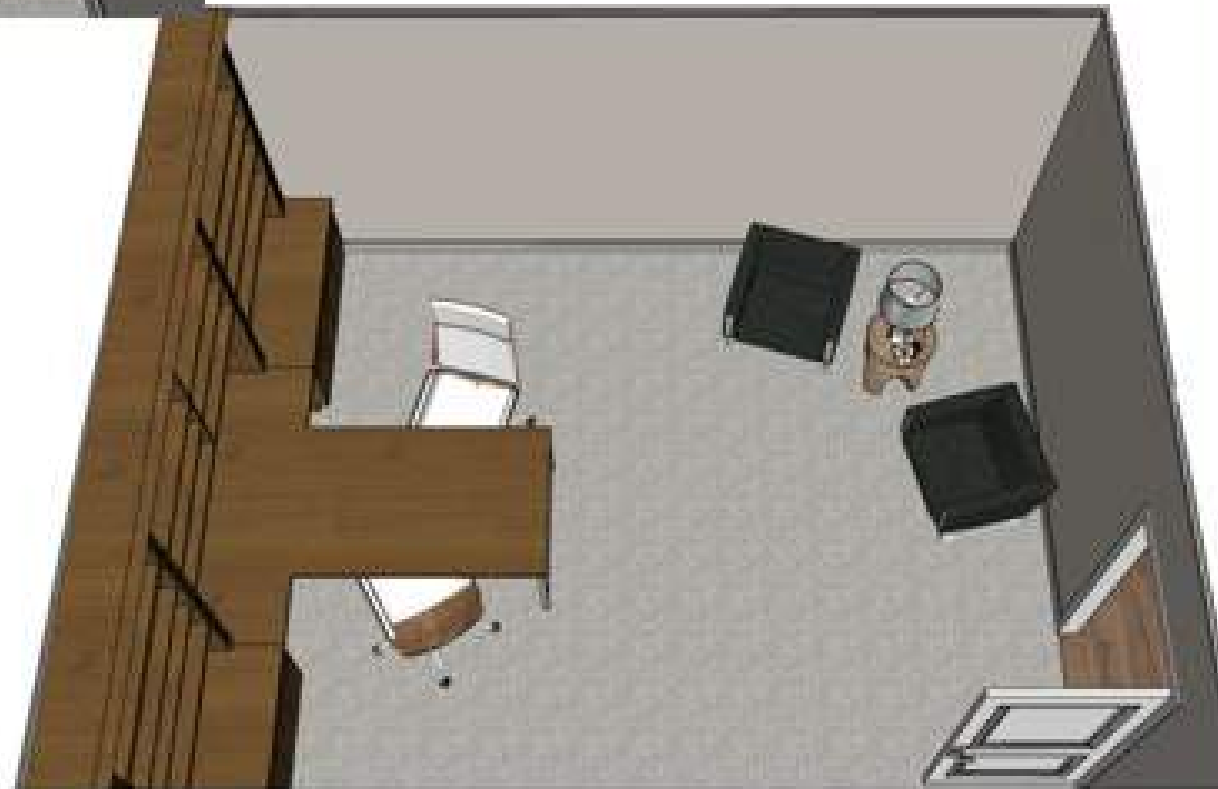
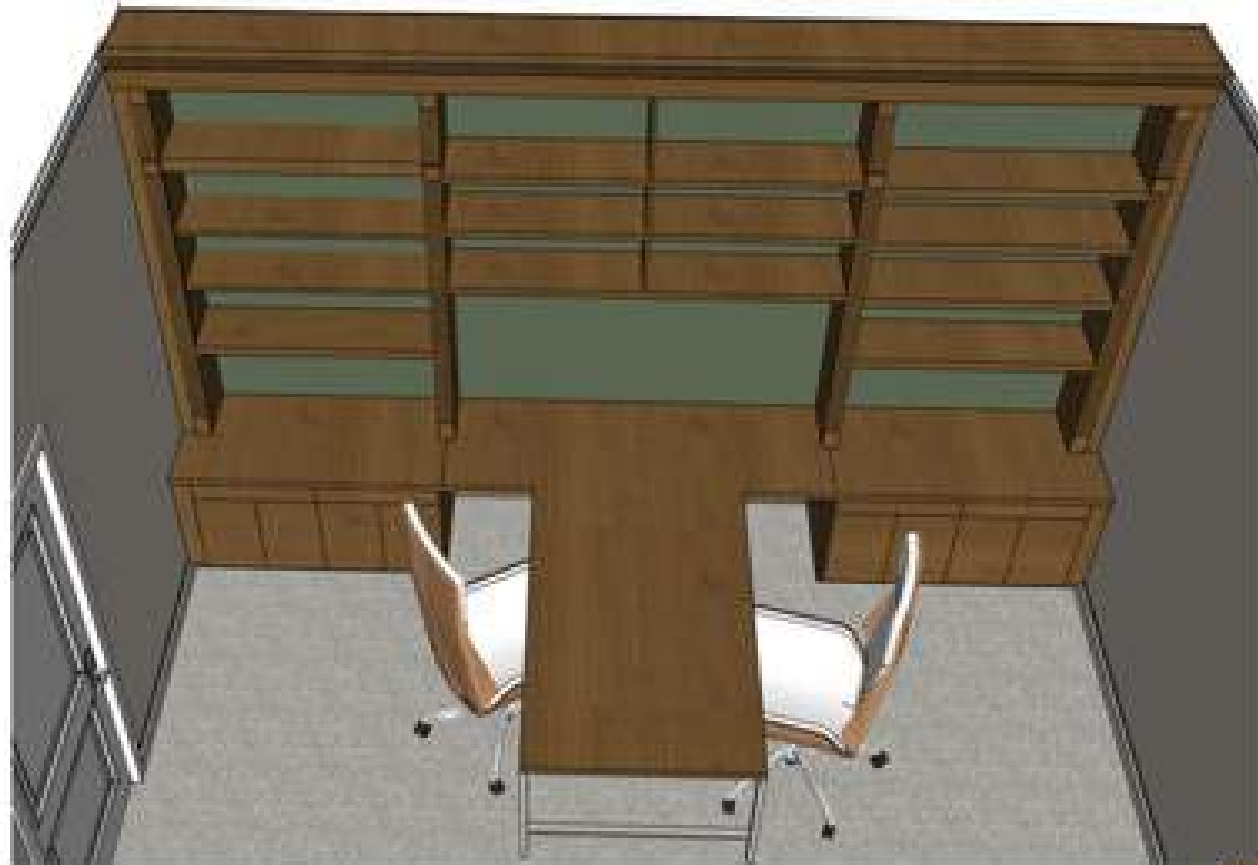
Master Bedroom &
Bathroom

PERSPECTIVE



Bedroom & Bathroom

PERSPECTIVE



PERSPECTIVE



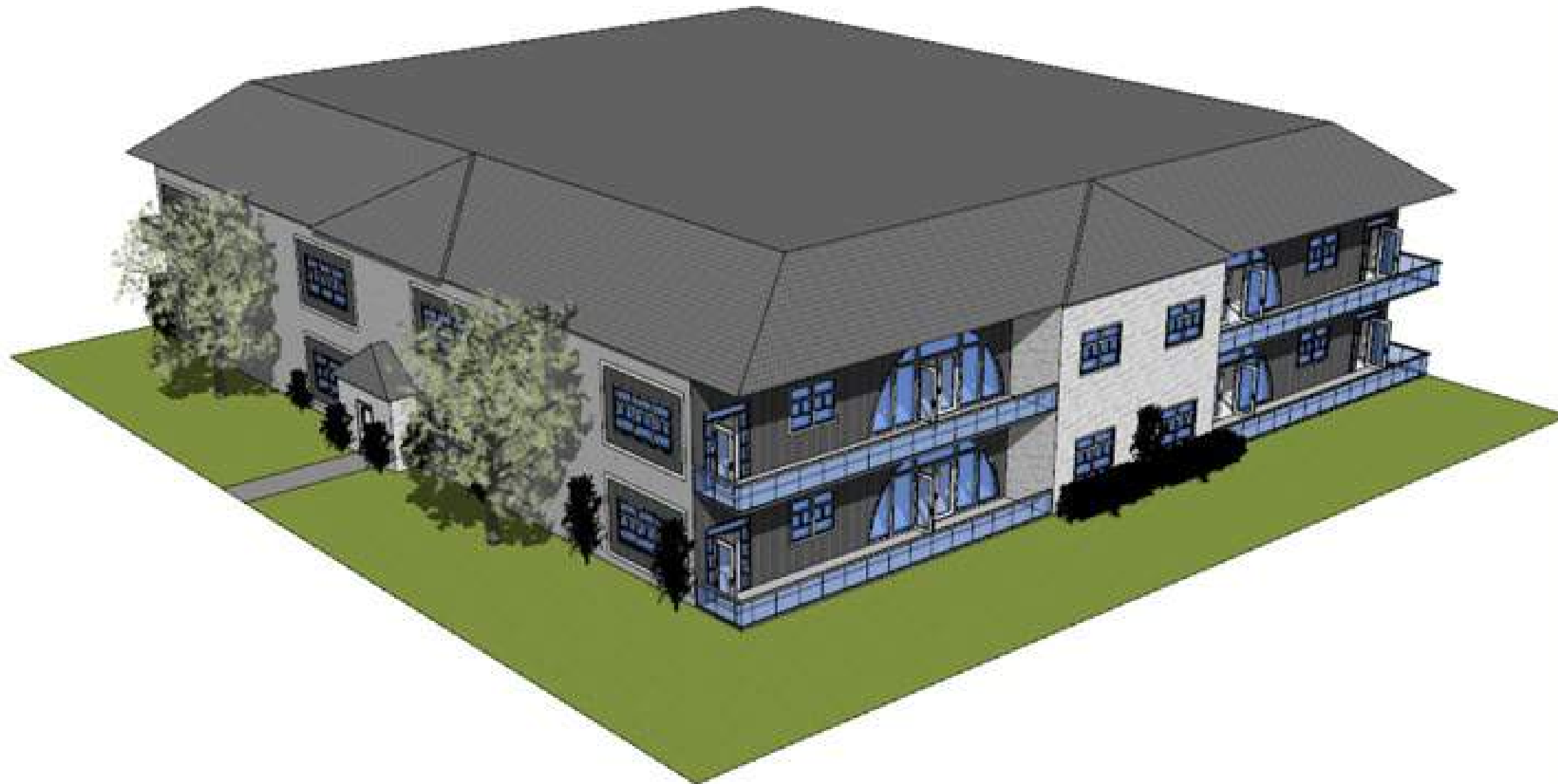
Gym, Laundry Room,
Powder Room

PERSPECTIVE



Balcony

PERSPECTIVE



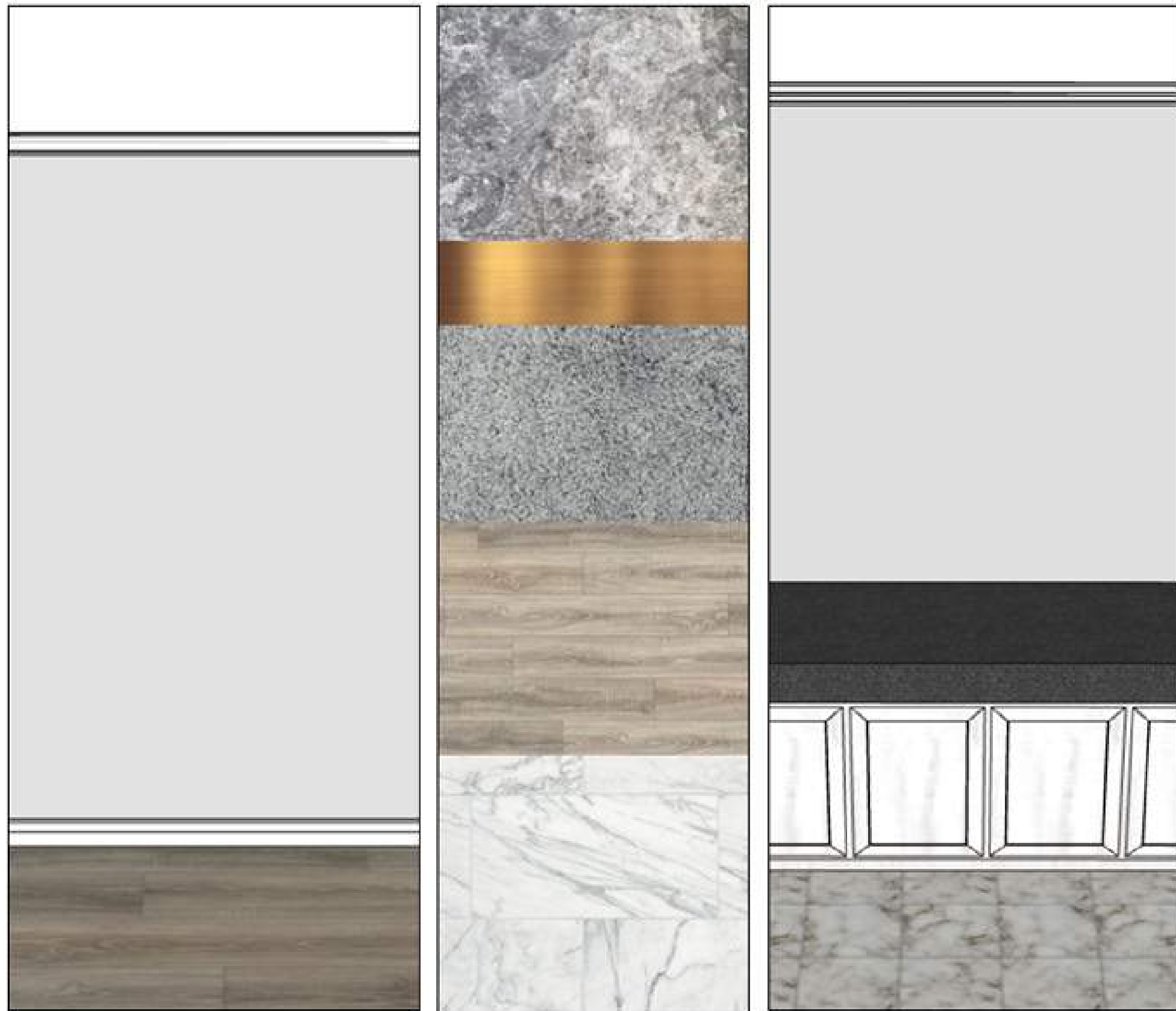
Exterior of building

FINISHES



Option #1

FINISHES



Option #2

ACCESSABILITY



Doors

- 36" doors
- Minimum of 18" of clear floor space on the pull side
- Door lever are usable with one hand, without tight grasping, pinching or twisting of the wrist

Bathrooms & Kitchen

- Horizontal grab bar on the adjacent side wall, 40" long and 36" above the floor for stabilization and assistance during transfer from a wheelchair
- Comfort height commode (19" from floor)
- Master sink has at least 29" of clearance under the front edge to allow wheelchair users to pull under the sink and use the faucet
- Faucets that are easily operable with hardware that is usable with one hand
- Shower spray unit has a hose that is 60" long and can be used both as a fixed shower head and as a handheld shower.
- Securely fastened folding seat 19" above the floor

Bedrooms

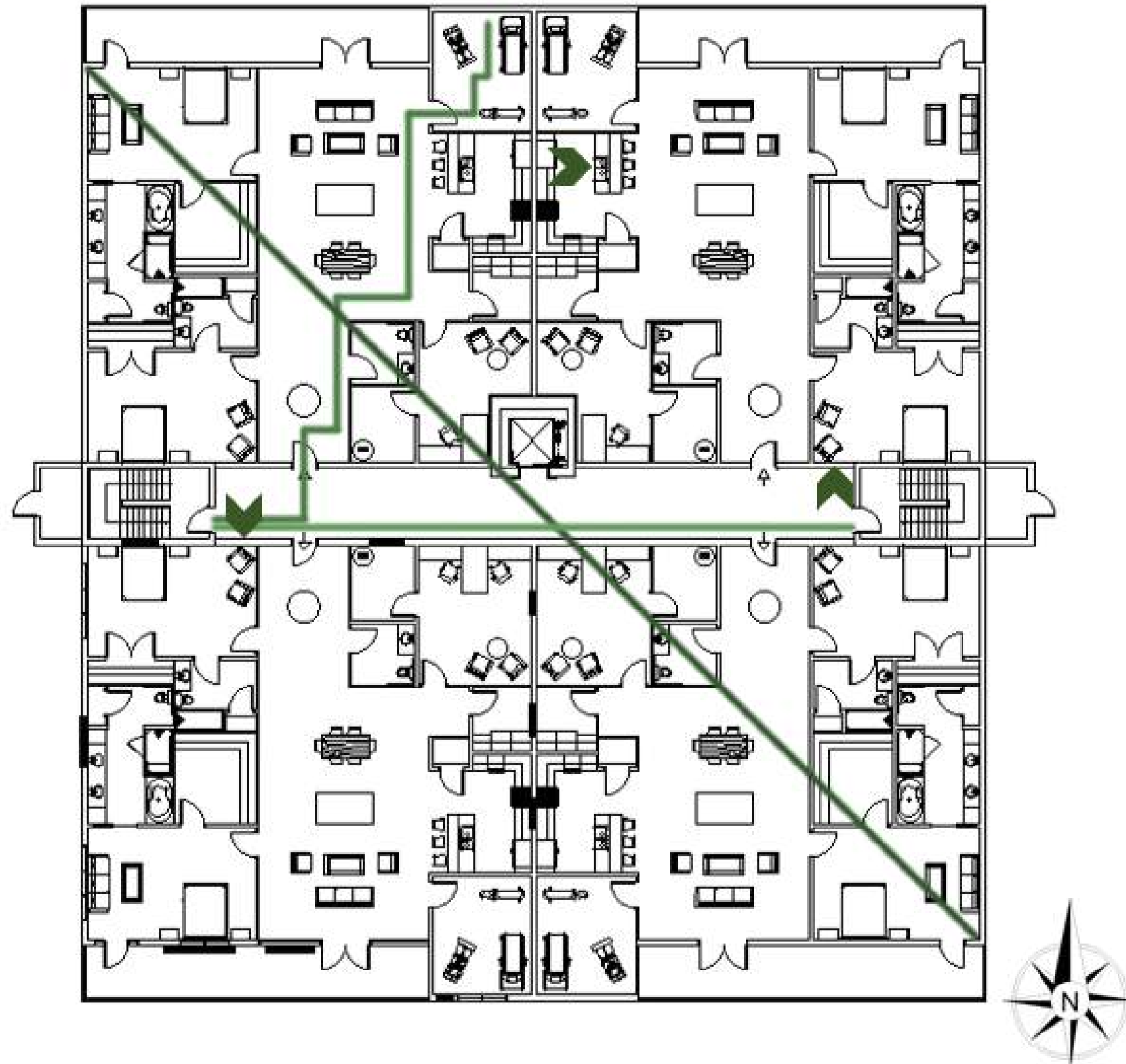
- At least a 36"-wide route on each side of the bed and at the foot of the bed
- Rods and shelves in the closet within 54" of the floor for side approach or 48" of the floor for forward approach

Floors

- Flooring is non slip with smooth transitions between carpet and hardwood

Not to Scale

LIFE SAFETY PLAN



First Floor Building Plan

(Second floor to match)

Life Safety Information:

Diagonal Length: 156'3"

Diagonal Third: 52'

Distance Between Exits: 80'

Maximum Travel Distance: 96'3"

➤ Fire Extinguisher Locations:

A: Hallway

B: Hallway

C: Under Kitchen Sink

Scale: 1/16"=1'-0"

